

## African Coleoptera Type Specimens collected by Thomas Wagner in the collection of the ZFMK

Karl-Heinz LAMPE, Dirk ROHWEDDER & Carola SCHMIDT  
Zoologisches Forschungsmuseum Alexander Koenig, Bonn, Germany

**Abstract.** The type specimens of African Coleoptera from material collected by Thomas Wagner mainly using insecticidal canopy fogging technique and housed in the Zoologisches Forschungsmuseum Alexander Koenig (ZFMK), Bonn, are listed. There are 71 names recorded; of these 37 (52%) are represented by holotypes. Specific names are sorted by their respective family and both are listed alphabetically. Reference to the original description of each taxon is provided and sex and number of each type given as well as images of the name bearing primary types.

**Keywords.** Type specimens, canopy fogging, Coleoptera, Africa.

### 1. INTRODUCTION

Thomas Wagner's material at the Zoologisches Forschungsmuseum (ZFMK) house African Coleoptera mainly collected in Rwanda, Kenya and Uganda from 1993 until today by insecticidal tree fogging. Voucher specimens were computerized within phase II of the German BIOTA East Africa Project (subproject BIOTA E15: "Capacity building in biodiversity information systems for insects and plants in East Africa") which is financially supported by the German Ministry of Science and Education (BMBF) and runs until May 2007. Data capture was done with the specimen based database BIODAT. By adaptation to the ABCD schema (Access to Biological Collection Data) BIODAT became both a BIOCASE- (Biological Collection Access Service for Europe) and GBIF- (Global Biodiversity Information Infrastructure) provider. Therefore full information at the specimen level, and not only of type specimens, for selected ZFMK insect collections will be commonly available on the World Wide Web (<http://www.biodat.de>). In case of type specimens images of the type itself and of the original labels are provided. The present catalogue covers 370 type specimens of 71 species of which 37 are represented by holotypes.

In this publication the specific taxa of Coleoptera are grouped by families and arranged alphabetically. They are listed by species epitheta, author, year of publication, page number where species was described, original generic assignment in brackets followed by the catalogue number/s, number/s sex and kind of type specimen. All primary types are listed with the original label information, supplemented by date and place collected information. Normally 'named area' information is used. If available the exact 'gathering site' information is indicated by geographical

coordinates (Latitude/Longitude). Higher ranked geographic information such as region, country and continent is added in a hierarchy. To avoid hypertrophic text length most of the secondary types are listed without original label information. If the collection, however, harbours only secondary types of a given taxon the original label information is given for the first type specimen. Images of the primary types are provided.

The following abbreviations were used in the lists: HT – holotype, PT – paratype, AT – "allotype"

#### COLEOPTERA

#### ANTHRIBIDAE

*cognatus* Frieser, 1997: 12 (*Mecocerus*)

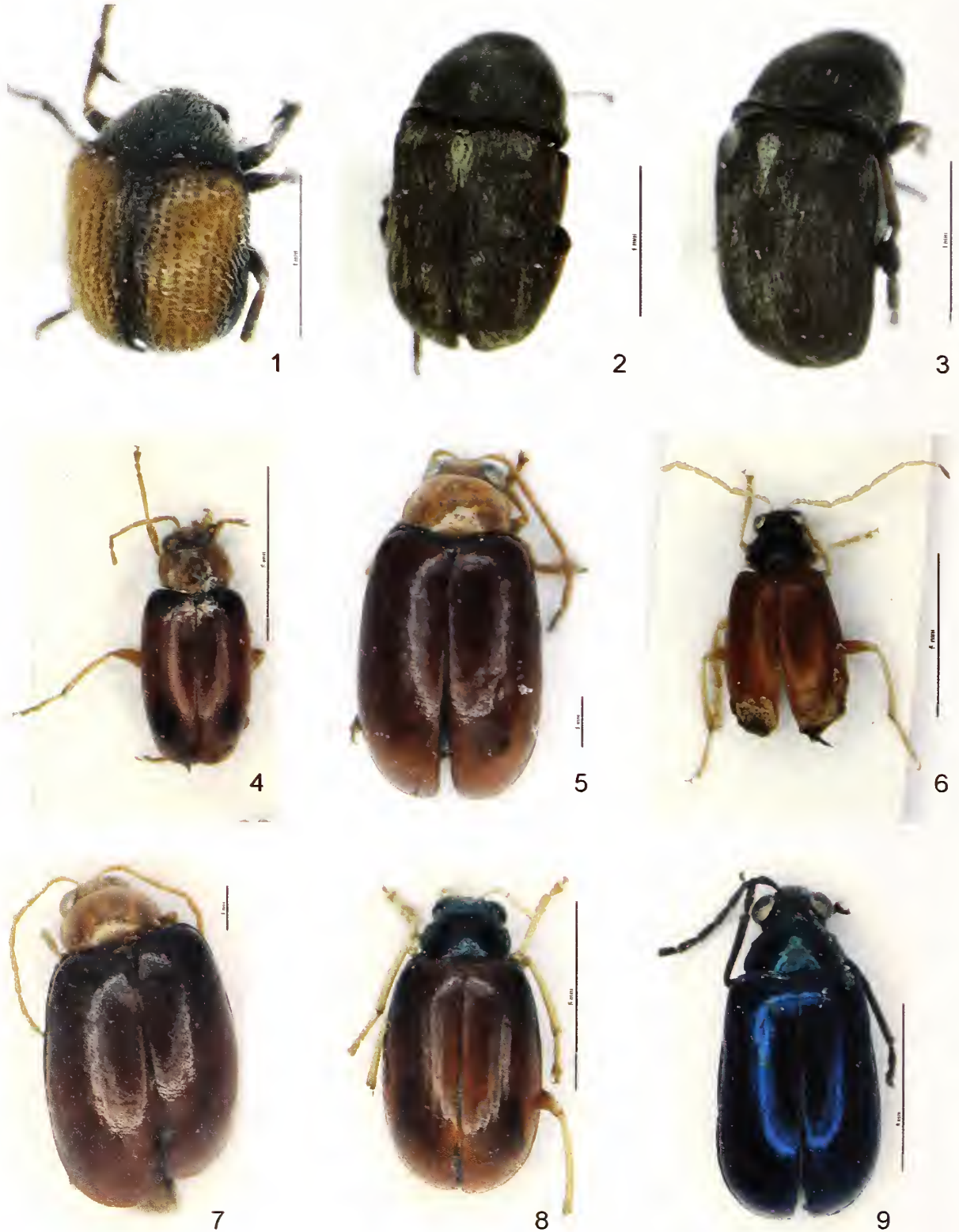
COL 2006/188 1 ♀ PT

Rwanda, Nyakabuye - Cyamudongo X.93 - Th. Wagner leg.  
/ C.g.7 1 / Paratype / *Mecocerus cognatus* sp. n. - Paratypus ♀ - det. R. Frieser 1996  
October 1993  
Cyamudongo, Nyakabuye, Cyangugu, Rwanda, Africa  
2°33'S, 28°59'E (gathering site: estimated value)

*marginalis* Frieser, 1997: 19 (*Triploodus*)

COL 2006/185 ♂ HT (Fig. 1)

Rwanda, 1700 m - Cyamudongo, X.93 - Th. Wagner leg. /  
C.g.4 3 / Holotype / *Triploodus marginalis* sp. n. -  
Holotypus ♂ - det. R. Frieser 1996  
October 1993  
Cyamudongo, Nyakabuye, Cyangugu, Rwanda, Africa  
2°33'S, 28°59'E (gathering site: estimated value)



**Figs 1–9.** *Triplopus marginalis* Frieser, 1997 (1) ♂ HT, *Uncifer nubilus* Frieser, 1997 (2) ♂ HT, *Uncifer proprius* Frieser, 1997 (3) ♂ HT, *Monolepta alwineae* Wagner, 2002 (4) ♂ HT, *Monolepta budongoensis* Wagner, 2002 (5) ♂ HT, *Monolepta comocensis* Wagner, 2000 (6) ♂ HT, *Monolepta congoensis* Wagner, 2002 (7) ♂ HT; *Monolepta constantini* Wagner, 2002 (8) ♂ HT, *Bo-noesioides jacobvi* Freund & Wagner, 2003 (9) ♂ HT: Habitus in dorsal view.

- COL 2006/187** 1 ♀ AT  
October 1993  
Cyamudongo, Nyakabuye, Cyangugu, Rwanda, Africa  
2°33'S, 28°59'E (gathering site: estimated value)
- COL 2006/186** 1 ♂ PT  
October 1993  
Karengera, Cyangugu, Rwanda, Africa  
2°31'S, 29°02'E (gathering site: estimated value)
- uuuehlei* Frieser, 1997: 15 (*Uncifer*)
- COL 2006/175** 1 ♂ PT  
Uganda, District Masindi - Budongo Forest n. Sonso -  
1°45'N, 31°35'W 11.-20.VII.95 - Th. Wagner leg. / T.n.15  
1 / Paratype / *Uncifer uuuehlei* sp. n. - Paratypus ♂ - det. R.  
Frieser 1996  
11.-20. July 1995  
Sonso River (Budongo Forest), Masindi, Uganda, Africa  
1°45'N, 31°35'E (exact gathering site information; error  
on original label!)
- uubilus* Frieser, 1997: 15-16 (*Uncifer*)
- COL 2006/176** ♂ HT (Fig. 2)  
Uganda, District Masindi - Budongo Forest n. Sonso -  
1°45'N, 31°35'W 1.-10.VII.95 - Th. Wagner leg. / Holotype  
/ *Uncifer uubilus* sp. n. - Holotypus ♂ - det. R. Frieser 1996  
01.-10. July 1995  
Sonso River (Budongo Forest), Masindi, Uganda, Africa  
1°45'N, 31°35'E (exact gathering site information; error  
on original label!)
- COL 2006/177** 1 ♀ AT  
21.-30. July 1995
- COL 2006/178** 1 ♂ PT  
11.-20. July 1995  
Sonso River (Budongo Forest), Masindi, Uganda, Africa  
1°45'N, 31°35'E (exact gathering site information; error  
on original label!)
- proprius* Frieser, 1997: 16 (*Uncifer*)
- COL 2006/179** ♂ HT (Fig. 3)  
Uganda, District Masindi - Budongo Forest n. Sonso -  
1°45'N, 31°35'W 21.-30.VII.95 - Th. Wagner leg. / T.n.11/2  
/ Holotype / *Uncifer proprius* sp. n. - Holotypus ♂ - det. R.  
Frieser 1996  
21.-30. July 1995  
Sonso River (Budongo Forest), Masindi, Uganda, Africa  
1°45'N, 31°35'E (exact gathering site information; error  
on original label!)
- COL 2006/180** 1 ♀ AT
- COL 2006/181, 184** 2 ♂ PT  
11.-20. July 1995
- COL 2006/183** 1 ♂ PT
- COL 2006/182** 1 ♀ PT  
21.-30. July 1995  
Sonso River (Budongo Forest), Masindi, Uganda, Africa  
1°45'N, 31°35'E (exact gathering site information; error  
on original label!)

## CERAMBYCIDAE

- wagneri* Adlbauer, 2006: 20-21 (*Stathmodera*)  
**Holotype** ♂ - in: National Museums of Kenya (NMK), Nairobi
- COL 2006/688** 1 PT  
Kenya, Kakamega F., - 0°22'N/34°50'E, 1800 m. - 7-11.II.99  
Th. Wagner leg. / T.n.33 1 / PARATYPUS -  
STATHMODERA - wagncri - ADLBAUER, 2006  
7.-11. February 1999  
Kakamega Forest, Western, Kenya, Africa  
0°17'N, 34°53'E (exact gathering site information; impre-  
cise data on original label!)
- COL 2006/689** 1 PT  
January 2002
- COL 2006/696** 1 PT  
October 2002  
Isiukhu River, Kakamega Forest, Western, Kenya, Africa  
0°20'N, 34°53'E (exact gathering site information; impre-  
cise data on original label!)
- COL 2006/690-691** 2 PT  
January-February 2002
- COL 2006/692 - 695** 4 PT  
October 2002
- COL 2006/701** 1 PT  
January 2003  
Busumbuli River, Kakamega Forest, Western, Kenya, Africa  
0°19'N, 34°52'E (exact gathering site information; impre-  
cise data on original label!)
- COL 2006/697 - 698** 2 PT  
October 2002
- COL 2006/702** 1 PT  
January 2003  
Colobus Trail, Kakamega Forest, Western, Kenya, Africa  
0°21'N, 34°51'E (exact gathering site information; impre-  
cise data on original label!)
- COL 2006/699** 1 PT  
October 2002  
Kisere Forest, Kakamega Forest, Western, Kenya, Africa  
0°24'N, 34°54'E (site information)
- COL 2006/700** 1 PT  
October 2002  
Yala River, Kakamega Forest, Western, Kenya, Africa  
0°12'N, 34°53'E (exact gathering site information; impre-  
cise data on original label!)

## CHRYSOMELIDAE

- alwineae* Wagner, 2002: 35 (*Monolepta*)
- COL 2007/156** ♂ HT (Fig. 4)  
Ivory Coast, Comoe - NP, 8.75N / 3.80W - VI.-VII.1997,  
C. Mody leg. / KC 35 .1C III.15 / Holotypus / *Monolepta* -  
*alwineae* sp. nov. - Th. Wagner det. 02 / AfriGa - speci-  
men ID - 1270 - specimen data - documented - 23.III.2006  
June-July 1997  
Komoe, Parc National de la Zanzan, Cote d'Ivoire, Africa  
8°45'N, 3°48'W (site information)



*budongoensis* Wagner, 2002: 29 (*Monolepta*)

- COL 2007/157** ♂ HT (Fig. 5)  
 Uganda, District Masindi - Budongo Forest n. Sonso -  
 1°45'N, 31°35'E; - 21.-30.VII.95 - Th. Wagner leg. / R.a.22  
 I / Holotypus / Monolepta - budongoensis - Wag-ner / AfriGa  
 - specimen ID - 1266 - specimen data - documented -  
 23.III.2006  
 21.-30. July 1995  
 Sonso River (Budongo Forest), Masindi, Uganda, Africa  
 1°45'N, 31°35'E (site information)
- COL 2006/158-159** 2 PT  
 5.-12. February 1997  
 Semliki Forest, Bundibugyo, Western, Uganda, Africa  
 0°48'N, 30°08'E (site information)

*clarae* Wagner, 2000a: 36 (*Monolepta*)

- COL 2007/160** 1 ♂ PT  
 Congo Belge, P.N.G. - Miss. H. De Saeger - Ndelele/2, 6-  
 VI-1952 - H. De Saeger. 3589 / Paratypus / Monolepta clarae  
 - Wagner, 1999 - Th. Wagner det.  
 6. June 1952  
 Ndelele (mts.), Garamba, Parc National de la, Haut-Congo,  
 Democratic Republic of the Congo, Africa  
 4°22'N, 29°47'E (gathering site: estimated value)
- COL 2006/161** 1 ♂ PT  
 20. June 1952  
 PFSK.5, Garamba, Parc National de la, Haut-Congo, Democ-  
 ratic Republic of the Congo, Africa  
 4°10'N, 29°30'E (gathering site: estimated value)
- COL 2006/162** 1 ♂ PT  
 22. June 1952  
 Utukuru (river), Garamba, Parc National de la, Haut-Congo,  
 Democratic Republic of the Congo, Africa  
 4°19'N, 29°52'E (gathering site: estimated value)

*clausnaumanni* Wagner, 2001b: 62 (*Monolepta*)

- COL 2007/163** 1 PT  
 I.R.S.A.C.-Mus.Congo - Kivu : Terr. Masisi, Laes - Moko-  
 to, 1800 m. - B. 82 N. Leleup VI-1959 / Bior. N° 81 - Hu-  
 mus - en forcet / Paratype - Monolepta - clausnaumanni  
 June 1959  
 Laes Mokoto (lake), Masisi, Nord-Kivu, Democratic  
 Republic of the Congo, Africa  
 1°16'S, 29°00'E (gathering site: estimated value)

*comoeensis* Wagner, 2000b: 235 (*Monolepta*)

- COL 2007/164** ♂ HT (Fig. 6)  
 Ivory Coast, Comoe - NP, 8,75N / 3,80W - IX.1999, C.  
 Mody leg. / Holotypus / Monolepta - comoeensis - Wagner  
 / AfriGa - specimen ID - 1296 - specimen data - document-  
 ed - 23.III.2006  
 September 1999  
 Komoe, Parc National de la, Zanzan, Cote d'Ivoire, Africa  
 8°45'N, 3°48'W (site information)

**COL 2006/165-190** 26 PT

September 1999  
 Komoe, Parc National de la, Zanzan, Cote d'Ivoire, Africa  
 8°45'N, 3°48'W (site information)

*congoensis* Wagner, 2002: 33 (*Monolepta*)

- COL 2007/192** ♂ HT (Fig. 7)  
 Uganda, Semliki Forest - 0°48'N, 30°8'E; 5.-12.II.97 - Th.  
 Wagner leg. / C.a. S4 I / Holotypus / Monolepta - congoensis  
 - Wagner / AfriGa - specimen ID - 1267 - specimen data -  
 documented - 23.III.2006  
 5.-12. February 1997  
 Semliki Forest, Bundibugyo, Western, Uganda, Africa  
 0°48'N, 30°08'E (site information)

*constantini* Wagner, 2000a: 34 (*Monolepta*)

- COL 2007/193** ♂ HT (Fig. 8)  
 Uganda, Dtr. Mbale - Budadiri, 1240 m, 1°10'N, 34°20'E -  
 Th. Wagner leg. 21.IX.1997 / Holotypus / Monolepta -  
 constantini - Wagner, 2000 - Holotypus / AfriGa - specimen  
 ID - 1289 - specimen data - documented - 23.III.2006  
 21. September 1997  
 Budadiri, Sironko, Northern, Uganda, Africa  
 1°10'N, 34°20'E (site information)
- COL 2006/194** 1 ♂ PT  
 18. June 1952  
 Iso, Garamba, Parc National de la, Haut-Congo, Democrat-  
 ic Republic of the Congo, Africa  
 4°10'N, 29°30'E (gathering site: estimated value)
- COL 2006/195** 1 ♂ PT  
 20. April 1952  
 Embe (mts.), Garamba, Parc National de la, Haut-Congo, De-  
 mocratic Republic of the Congo, Africa  
 4°40'N, 29°31'E (gathering site: estimated value)

*decellei* Wagner, 2002: 34 (*Monolepta*)

- COL 2007/225** 1 PT  
 Coll. Mus. Tervuren - Cote d'Ivoire: Mouyassue, - 30 km,  
 E.d'Aboisso - J. Decelle VI.1961 / Récolté sur - cacaoyer /  
 Paratypus / Monolepta - decellei Wagner  
 June 1961  
 Mouyassue, Aboisso, Sud-Comoé, Cote d'Ivoire, Africa
- COL 2006/226** 1 PT  
 20. April 1952  
 Embe (mts.), Garamba, Parc National de la, Haut-Congo, De-  
 mocratic Republic of the Congo, Africa  
 4°40'N, 29°31'E (gathering site: estimated value)

*ephippiatoides* Wagner, 2001a: 206 (*Monolepta*)

- COL 2007/227-229** 3 PT  
 SÜDAFRIKA, NE-Prov. - Tshipise, Honet Nature - Reserve  
 Berg b. Camp - 22°37'S, 30°10'E, 320 m - NN, 23.-  
 25.XI.1996 - leg. M. Hartmann / Paratypus / Monolepta -  
 ephippiatoides - Wagner  
 23.-25. November 1996

Tshipise, Transvaal, Northern Province, South Africa, Africa  
22°37'S, 30°10'E (site information)

*gerstaeckeri* Wagner, 2001a: 200 (*Monolepta*)

**COL 2007/196-197** **2 ♂ PT**

Musee du Congo - Kapiri - IX-1912 - Miss. Agric. / Paraty-  
pus / Monolepta - gerstaeckeri - Wagner  
September 1912

Kapiri, Katanga, Democratic Republic of the Congo,  
Africa

10°18'S, 26°10'E (gathering site: estimated value)

**COL 2006/198** **1 PT**

Kundelungus, Katanga, Democratic Republic of the Congo,  
Africa

10°00'S, 28°00'E (gathering site: estimated value)

*hartmanni* Wagner, 2000b: 233 (*Monolepta*)

**COL 2007/199** **1 PT**

Shilouvane - "C ?" habina - Zoutpansberg - H. Junod / un-  
lesbare Etikett / Musee du Congo - Transvaal: - Zoutpansberg  
- Coll. Clavareau / R. Det. - L - 3678 / Paratytypus / Monolep-  
ta - hartmanni Wagner / coll. - Th. Wagner

Zoutpansberg(= Soutpansberg), Transvaal, Northern  
Province, South Africa, Africa

22°58'S, 29°45'E (gathering site: estimated value)

**COL 2006/200** **1 ♂ PT**

19. December 1972

Macheke, Mashonaland East, Zimbabwe, Africa

18°09'S, 31°51'E (gathering site: estimated value)

*ivorensis* Wagner, 2001b: 55 (*Monolepta*)

**COL 2007/201** **1 ♂ PT**

Coll. Mus. Tervuren - Cote d'Ivoire: Heremankono, - au sud  
de Divo - J. Decelle VIII.1961 / Paratytypus / Monolepta -  
ivorensis - Th. Wagner

August 1961

Heremankono, Forest, Divo, Sud-Bandama, Cote d'Ivoire,  
Africa

5°49'S, 5°00'W (gathering site: estimated value)

**COL 2006/202-204** **3 PT**

June 1961

Mouyassue, Aboisso, Sud-Comoé, Cote d'Ivoire, Africa

*jacobyi* Freund & Wagner, 2003: 1953 (*Bonesioides*)

**COL 2007/191** **♂ HT (Fig. 9)**

Uganda, District Masindi - Budongo Forest n. Sonso -  
1°45'N, 31°35'E; - 19.-30.VI.95 - Th. Wagner leg. / Holo-  
typus - Bonesioides - jacobyi / Bonesioides - jacobyi - Fre-  
und & Wagner 2000 / AfriGa - specimen ID - 1642 - spec-  
imen data - documented - 23.III.2006

19.-30. June 1995

Sonso River (Budongo Forest), Masindi, Uganda, Africa

1°45'N, 31°35'E (site information)

*kakamegaensis* Middelhaue & Wagner, 2001: 526  
(*Afrocrania*)

**Holotype** ♂ - in: National Museums of Kenya (NMK), Nairobi

**COL 2007/231 -234** **5 PT**

Kenya, Kakamega F., - 0°22'N/34°50'E, 1600m, - 7-  
11.II.99, Th. Wagner leg. / Paratytypus - Afrocrania -  
kakamegaensis - Middelhaue & Wagner  
7.-11. February 1999

Kakamega Forest, Western, Kenya, Africa

0°17'N, 34°53'E (exact gathering site information; impre-  
cise data on original label!)

*laboissierei* Wagner, 2001a: 201 (*Monolepta*)

**COL 2007/205-207** **3 PT**

Coll. Mus. Congo - Lulua: Kapanga - X.1933 - G.F. Over-  
laet / Paratytypus / Monolepta - laboissierei Wagner / coll. -  
Th. Wagner

October 1933

Kapanga, Lulua, Kasai Occidental, Democratic Republic of  
the Congo, Africa

8°13'S, 22°22'E (gathering site: estimated value)

**COL 2006/208-209** **2 PT**

20. October 1951

**COL 2006/210** **1 PT**

12. April 1952

**COL 2006/211** **1 PT**

18. July 1952

Garamba, Parc National de la, Haut-Congo, Democratic Re-  
public of the Congo, Africa

4°10'N, 29°30'E (gathering site: estimated value)

*marcoi* Freund & Wagner, 2003: 1957 (*Bonesioides*)

**COL 2007/230** **1 PT**

Uganda, Semliki Forest - 0°48'N, 30°8'E; 5.-12.II.97 - Th.  
Wagner leg. / C.a. S7 1 / Paratytypus / Bonesioides - marcoi  
- Freund & Wagner

5.-12. February 1997

Semliki Forest, Bundibugyo, Western, Uganda, Africa

0°48'N, 30°08'E (site information)

*mpangae* Wagner, 2000a: 38 (*Monolepta*)

**COL 2007/212-213** **2 ♂ PT**

Uganda Prot. - Mpanga Forest, - Toro. 4,800 ft. - 13-23 Nov.  
1911. - S. A. Neave. / 1912-193 / Paratytypus / Monolepta  
mpangae - Wagner - Th. Wagner det. 1999

13.-23. November 1911

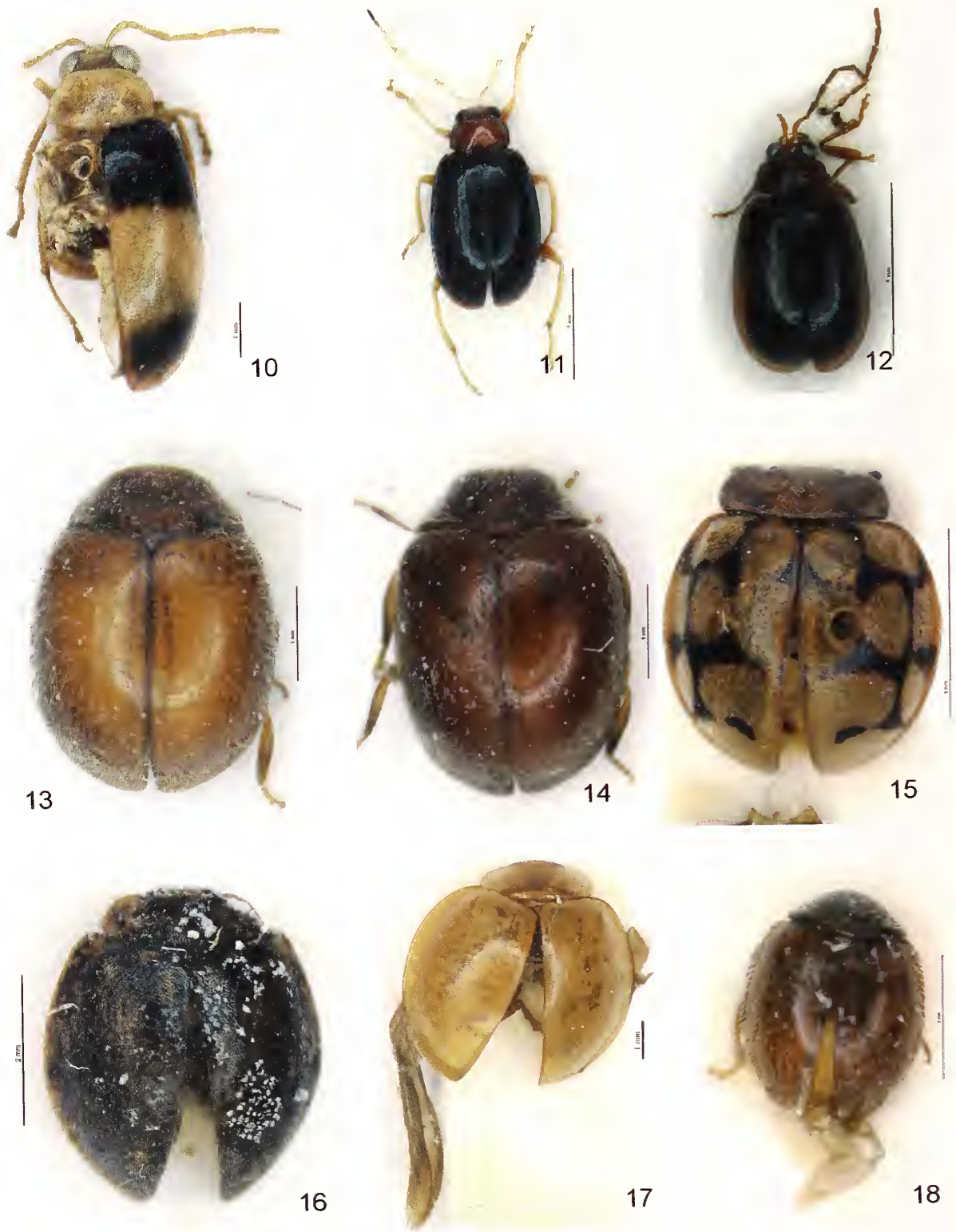
Mpanga Forest (forest), Central, Uganda, Africa

0°12'N, 32°18'E (gathering site: estimated value)

*naumannii* Wagner, 2005: 279 (*Monolepta*)

**COL 2007/214** **♂ HT (Fig. 10)**

Uganda, District Masindi - Budongo Forest n. Sonso -  
1°45'N, 31°35'E; 1.-10.VII.95 - Th. Wagner leg. / T.r.15 2  
/ Holotypus / Monolepta - naumannii sp. nov. - Th. Wagner /  
AfriGa - specimen ID - 1835 - specimen data - documented  
- 23.III.2006



**Figs 10–18.** *Monolepta naumanni* Wagner, 2005 (10) ♂ HT, *Monolepta pelcae* Wagner, 2003 (11) ♂ HT, *Monolepta sonsoensis* Wagner, 2001 (12) ♂ HT, *Nephus brevipilosus* Fürsch, 1997 (13) ♂ HT, *Pseudoscymnus brunneus* Fürsch, 1997 (14) ♂ HT, *Epilachna carapacola* Fürsch, 1997 (15) ♂ HT, *Epilachna conspergata* Fürsch, 1997 (16) ♂ HT, *Harmonia gilvella* Fürsch, 2001 (17) ♂ HT, *Scotoscymnus glabripilosus* Fürsch, 1997 (18) ♂ HT: Habitus in dorsal view.



- 1.-10. July 1995  
Sonso River (Budongo Forest), Masindi, Uganda, Africa  
1°45'N, 31°35' E (site information)  
**COL 2007/244-245** **2 PT**
- 1.-10. July 1995  
**COL 2007/246-247** **2 PT**
- 11.-20. July 1995  
Sonso River (Budongo Forest), Masindi, Uganda, Africa  
1°45'N, 31°35' E (site information)  
**COL 2007/248** **1 PT**
- 5.-12. February 1997  
Semliki Forest, Bundibugyo, Western, Uganda, Africa  
0°48'N, 30°08' E (site information)  
**COL 2006/251** **1 PT**
- January 2003  
Busumbuli River, Kakamega Forest, Western, Kenya, Africa  
0°19'N, 34°52' E (exact gathering site information;  
imprecise data on original label!)
- COL 2006/253** **1 PT**
- October 2002  
Colobus Trail, Kakamega Forest, Western, Kenya, Africa  
0°21'N, 34°51' E (exact gathering site information;  
imprecise data on original label!)
- COL 2006/252** **1 PT**
- January 2003  
Kisere Forest, Kakamega Forest, Western, Kenya, Africa  
0°24'N, 34°54' E (site information)
- COL 2007/249** **1 PT**
- November 2001
- COL 2007/250** **1 PT**
- January 2003  
Yala River, Kakamega Forest, Western, Kenya, Africa  
0°12'N, 34°53' E (exact gathering site information;  
imprecise data on original label!)
- peleae* Wagner, 2003: 80 (*Monolepta*)
- COL 2007/215** **♂ HT (Fig. 11)**
- Rwanda, Rusumo - Ibanda Makera, X.93 - Th. Wagner leg.  
/ T.n.1 1 / Holotypus / *Monolepta* - *peleae* - sp. nov.  
Th. Wagner / AfriGa - specimen ID - 1708 - specimen data  
- documented - 23.III.2006
- October 1993  
Ibanda Makera, Rusumo, Kibungo, Rwanda, Africa  
2°15' S, 30°50' E (gathering site: estimated value)
- COL 2006/216** **1 PT**
- 1893  
Pretoria, Transvaal, Northern Province, South Africa, Africa  
25°45' S, 28°10' E (gathering site: estimated value)
- COL 2006/217** **1 PT**
30. July - 2. August 2000  
Peramiho, Ruvuma, Tanzania, Africa  
10°39' S, 35°27' E (gathering site: estimated value)
- sousoensis* Wagner, 2001b: 54 (*Monolepta*)
- COL 2007/218** **♂ HT (Fig. 12)**
- Uganda, District Masindi - Budongo Forest n. Sonso -  
1°45'N, 31°35' E; 1.-10.VII.95 - Th. Wagner leg. / Holoty-  
pus / *Monolepta* - *sousoensis* Wagner / AfriGa - specimen ID  
- 1276 - specimen data - documented - 23.III.2006
- 1.-10. July 1995  
Sonso River (Budongo Forest), Masindi, Uganda, Africa  
1°45' N, 31°35' E (site information)
- COL 2006/219** **1 PT**
- 1.-10. July 1995  
Sonso River (Budongo Forest), Masindi, Uganda, Africa  
1°45' N, 31°35' E (site information)
- tutseki* Wagner & Scherz, 2002: 359 (*Afrocanthezea*)
- Holotype** ♂ - in: National Museums of Kenya (NMK), Nairobi
- COL 2007/235** **1 PT**
- Uganda, District Masindi - Budongo Forest n. Sonso -  
1°45' N, 31°35' W; - 19.-30.VI.95 - Th. Wagner leg. / Paraty-  
pus / *Afrocanthezea* *tutseki* - sp. nov. - Scherz & Wagner 2002  
19.-30. June 1995
- COL 2007/236** **1 PT**
- 11.-20. July 1995
- COL 2007/237** **1 PT**
- 5.-15. January 1997
- COL 2007/238-239** **2 PT**
- September 1997  
Sonso River (Budongo Forest), Masindi, Uganda, Africa  
1°45' N, 31°35' E (exact gathering site information; error  
on original label!)
- COL 2007/240-243** **4 PT**
26. July - 22. August 1998  
Kanyawara (Kibale National Park), Kabarole, Western,  
Uganda, Africa  
0°34' N, 30°20' E (gathering site: estimated value)
- upeubaensis* Wagner, 2000b: 234 (*Monolepta*)
- COL 2007/220** **1 PT**
- Congo belge: P.N.U. - Mbuye-Bala (1750 m.) - 1-7-IV-1948  
- Mis. G.F. de Witte. 1500a / Paratypus / *Monolepta* - *upe-  
ubaensis* - Wagner / coll. - Th. Wagner
- 1.-7. April 1948  
Mbuye-Bala (stream)(= Buye-Bala (stream)), Upemba, Parc  
National de la, Katanga, Democratic Republic of the Con-  
go, Africa  
8°54' S, 26°59' E (gathering site: estimated value)
- ursulae* Wagner, 2003: 67 (*Monolepta*)
- COL 2007/221, 257-258** **3 PT**
- S.W. - AFRIKA - Okahandja 1.1956. - W. Hoesch leg., ded.  
- Eing.Nr.6, 1956. / Paratypus / *Monolepta* - *ursulae* -  
Th. Wagner  
January 1956

- Okahandja, Okahandja, Otjozondjupa, Namibia, Africa  
21°59'S, 16°5'E (gathering site: estimated value)
- COL 2006/224, 265-267** **3 PT**  
12. January 1985
- COL 2006/268-270** **3 PT**  
27. March 1988  
Döbra, Windhoek, Khomas, Namibia, Africa  
22°20'S, 17°06'E (gathering site: estimated value)
- COL 2006/271** **1 PT**  
14.-22. January 1982  
Kombat, Grootfontein, Otjozondjupa, Namibia, Africa  
19°43'S, 17°43'E (gathering site: estimated value)
- COL 2006/272** **1 PT**  
20. February - 6. March 1979  
Gobabeb, Swakopmund, Erongo, Namibia, Africa  
23°33'S, 15°02'E (gathering site: estimated value)
- COL 2006/223, 264** **2 PT**  
9.-15. March 1985  
Naos, Rehoboth, Hardap, Namibia, Africa  
23°12'S, 16°46'E (gathering site: estimated value)
- COL 2006/261** **1 PT**  
15. December 1974
- COL 2006/262** **1 PT**  
8.-12. March 1979
- COL 2006/222, 259-260** **3 PT**  
8.-13. January 1982
- COL 2006/263** **1 PT**  
17.-20. March 1982  
Okahandja, Okahandja, Otjozondjupa, Namibia, Africa  
21°59'S, 16°5'E (gathering site: estimated value)
- COL 2006/273** **1 PT**  
18.-20. March 1991  
Osona, Okahandja, Otjozondjupa, Namibia, Africa  
22°04'S, 16°53'E (gathering site: estimated value)
- COL 2006/274** **1 PT**  
7. February 1975
- COL 2006/275-276** **2 PT**  
8. February 1975
- COL 2006/273** **1 PT**  
2. March 1975  
Windhoek, Windhoek, Khomas, Namibia, Africa  
22°35'S, 17°05'E (gathering site: estimated value)
- COCCINELLIDAE**
- brevipilosus* Fürsch, 1997: 18 (*Nephus*)
- COL 2006/13** **♂ HT (Fig. 13)**  
Rwanda, Nyakabuye - Cyamudongo X.93 - Th. Wagner leg. / C.g. 12 / Holotypus - *Nephus* ♂ - *brevipilosus* - Fürsch, 1995  
October 1993  
Cyamudongo, Nyakabuye, Cyangugu, Rwanda, Africa  
2°33'S, 28°59'E (gathering site: estimated value)
- COL 2006/14** **1 ♂ PT**  
October 1993  
Karengera, Cyangugu, Rwanda, Africa  
2°31'S, 29°02'E (gathering site: estimated value)
- COL 2006/15-16** **2 ♀ PT**  
October 1993  
Cyamudongo, Nyakabuye, Cyangugu, Rwanda, Africa  
2°33'S, 28°59'E (gathering site: estimated value)
- brunneus* Fürsch, 1997: 20 (*Pseudoscymnus*)
- COL 2006/53** **♂ HT (Fig. 14)**  
Rwanda, Nyakabuye - Cyamudongo X.93 - Th. Wagner leg. / Cg 11 / Holotypus - *Pseudoscymnus* - *brunneus* ♂ - Fürsch, 1995  
October 1993  
Cyamudongo, Nyakabuye, Cyangugu, Rwanda, Africa  
2°33'S, 28°59'E (gathering site: estimated value)
- COL 2006/54-55, 57-60** **6 ♀ PT**
- COL 2006/56, 61** **2 ♂ PT**  
October 1993  
Cyamudongo, Nyakabuye, Cyangugu, Rwanda, Africa  
2°33'S, 28°59'E (gathering site: estimated value)
- carapacola* Fürsch, 1997: 26 (*Epilachna*)
- COL 2006/41** **♂ HT (Fig. 15)**  
Rwanda, 1700 m - Cyamudongo, X.93 - Th. Wagner leg. / C.g. 17 I / Holotypus - *Epilachna* ♂ - *carapacola* - Fürsch, 95  
October 1993  
Cyamudongo, Nyakabuye, Cyangugu, Rwanda, Africa  
2°33'S, 28°59'E (gathering site: estimated value)
- COL 2006/42** **1 ♀ PT**  
October 1993  
Cyamudongo, Nyakabuye, Cyangugu, Rwanda, Africa  
2°33'S, 28°59'E (gathering site: estimated value)
- conspersgata* Fürsch, 1997: 24 (*Epilachna*)
- COL 2006/43** **♂ HT (Fig. 16)**  
Rwanda, Nyungwe - Kamiranzovu, 2000 m - Th. Wagner leg. X.93 / C.g. 2 4 / Holotypus - *Epilachna* ♂ - *conspersgata* - Fürsch, 95  
October 1993  
Kamiranzovu, Nyungwe Forest, Cyangugu, Rwanda, Africa  
2°29'S, 29°09'E (gathering site: estimated value)
- COL 2006/44** **1 ? PT**
- COL 2006/45** **1 PT**  
October 1993  
Kamiranzovu, Nyungwe Forest, Cyangugu, Rwanda, Africa  
2°29'S, 29°09'E (gathering site: estimated value)
- COL 2006/46** **1 ♀ PT**  
October 1993  
Karengera, Cyangugu, Rwanda, Africa  
2°31'S, 29°02'E (gathering site: estimated value)



*fissilobis* Fürsch, 2001b: 103-104 (*Pharoscyrmus*)

Holotype ♂ - in: National Museums of Kenya (NMK), Nairobi

COL 2006/107-115 9 PT

Kenya, Nairobi, Langata, - 1°20'S/36°46'E, 1650 m, 12.-14.1.1999, - Th. Wagner leg. / T.s.4.4 / Paratypus - *Pharoscyrmus* - *fissilobis* - Fürsch, 1999  
12.-14. January 1999  
Langata (Nairobi), Nairobi, Kenya, Africa  
1°20'S, 36°46'E (site information)

*gilvella* Fürsch, 2001b: 98-99 (*Harmonia*)

COL 2006/1185 ♂ HT (Fig. 17)

Uganda, Semliki Forest - 0°48'N, 30°8'E; 5.-12.II.97 - Th. Wagner leg. / C.a. S3 7 / Holotypus - *Micraspis* ♂ - *gilvella* - Fürsch, 1999  
5.-12. February 1997  
Semliki Forest, Bundibugyo, Western, Uganda, Africa  
0°48'N, 30°08'E (site information)

COL 2006/6-8, 1186-1190 8 PT

5.-12. February 1997  
Semliki Forest, Bundibugyo, Western, Uganda, Africa  
0°48'N, 30°08'E (site information)

*glabripilosus* Fürsch, 1997: 22 (*Scotoscyrmus*)

COL 2006/62 ♂ HT (Fig. 18)

Rwanda, 1700 m - Karengera, X.93 - Th. Wagner leg. / C.g.1 14 / Holotypus - *Scotoscyrmus* - *glabripilosus* ♂ - Fürsch, 1995  
October 1993  
Karengera, Cyangugu, Rwanda, Africa  
2°31'S, 29°02'E (gathering site: estimated value)

COL 2006/63-64, 70, 73, 75-80 10 PT

October 1993  
Cyamudongo, Nyakabuye, Cyangugu, Rwanda, Africa  
2°33'S, 28°59'E (gathering site: estimated value)

COL 2006/65, 67-69, 81 5 PT

October 1993  
Karengera, Cyangugu, Rwanda, Africa  
2°31'S, 29°02'E (gathering site: estimated value)

COL 2006/66, 72, 74 3 PT

October 1993  
Kamiranzovu, Nyungwe Forest, Cyangugu, Rwanda, Africa  
2°29'S, 29°09'E (gathering site: estimated value)

COL 2006/71 1 PT

October 1993  
Ibanda Makera, Rusumo, Kibungo, Rwanda, Africa  
2°15'S, 30°50'E (gathering site: estimated value)

*gracilis* Fürsch, 1997: 20 (*Ortalia*)

COL 2006/5 ♂ HT (Fig. 19)

Rwanda, Rusumo - Ibanda Makera, X.93 - Th. Wagner leg. / Holotypus - *Ortalia* - *gracilis* ♂ - Fürsch, 95 / *Ortalia basinigra* Ma. - det. H. Fürsch 03  
October 1993

Ibanda Makera, Rusumo, Kibungo, Rwanda, Africa

2°15'S, 30°50'E (gathering site: estimated value)

*goellnerae* Fürsch, 2001b: 100 (*Platynaspis*)

COL 2007/58-59 2 ♀ PT

Uganda, Semliki Forest - 0°48'N, 30°8'E; 5.-12.II.97 - Th. Wagner leg. / Paratype - *Platynaspis* - *goellnerae* ♀ - Fürsch, 1999  
5.-12. February 1997  
Semliki Forest, Bundibugyo, Western, Uganda, Africa  
0°48'N, 30°08'E (site information)

*kenyensis* Fürsch, 2001b: 101-102 (*Boschalis*)

Holotype ♂ - in: National Museums of Kenya (NMK), Nairobi

COL 2006/116 1 PT

Mt. Kenya, NP-HQ, - 2550 m, 0°10.5'S/37°8.8'E; - II.99 Th. Wagner leg. / P.l.17 2 / Paratypus - *Boschalis kenyensis* - Fürsch, 99  
February 1999  
Mount Kenya (mts.), Central, Kenya, Africa  
0°10'S, 37°11'E (exact gathering site information; imprecise data on original label!)

COL 2006/117 1 PT

January 1999  
Gatamayu, Kikuyu, Central, Kenya, Africa  
0°58'S, 36°42'E (site information)

COL 2006/118 1 PT

18. February 1999  
SE-Aberdare, Central, Kenya, Africa  
0°23'S, 36°46'E (site information)

*magnum* Fürsch, 2006: 114-115 (*Cheilomenes*)

COL 2007/56 ♂ HT (Fig. 20)

Kenya, Busumbuli, 1600 m - Kakamega Forest - 0,27°N / 34,88°E - W. Freund leg. X.01 / T.n.138 1 - IX.-X.2001 / Holotypus - *Cheilomenes* - *magnum* ♂ - Fürsch, 2005  
October 2001  
Busumbuli River, Kakamega Forest, Western, Kenya, Africa  
0°19'N, 34°52'E (exact gathering site information; imprecise data on original label!)

COL 2007/57 1 ♀ PT

January 2003  
Kisere Forest, Kakamega Forest, Western, Kenya, Africa  
0°24'N, 34°54'E (site information)

*maximus* Fürsch, 1997: 22-24 (*Scotoscyrmus*)

COL 2006/87 ♂ HT (Fig. 21)

Rwanda, Nyakabuye - Cyamudongo X.93 - Th. Wagner leg. / Cg 9 / Holotypus ♂ - *Scotoscyrmus* - *maximus* - Fürsch, 95  
October 1993  
Cyamudongo, Nyakabuye, Cyangugu, Rwanda, Africa  
2°33'S, 28°59'E (gathering site: estimated value)

COL 2006/88, 90-106 18 PT

October 1993  
Cyamudongo, Nyakabuye, Cyangugu, Rwanda, Africa  
2°33'S, 28°59'E (gathering site: estimated value)



Figs 19–27. *Ortalia gracilis* Fürsch, 1997 (19) ♂ HT, *Cheilomenes magnifica* Fürsch, 2006 (20) ♂ HT, *Scotoscymnus maximus* Fürsch, 1997 (21) ♂ HT, *Ortalia minima* Fürsch, 2001 (22) ♂ HT, *Nephus rugulipennis* Fürsch, 1997 (23) ♂ HT, *Scymnus rwan-densis* Fürsch, 1997 (24) ♂ HT, *Telsimia striata* Fürsch, 1997 (25) ♂ HT, *Epilaelma struweii* Fürsch, 2001 (26) ♂ HT, *Boschalis wagneri* Fürsch, 1997 (27) ♂ HT: Habitus in dorsal view.

- COL 2006/89** **1 PT**  
October 1993  
Karengera, Cyangugu, Rwanda, Africa  
2°31'S, 29°02'E (gathering site: estimated value)
- minima* Fürsch, 2001b: 99 (*Ortalia*)  
**COL 2006/4** **♂ HT (Fig. 22)**  
Uganda, District Masindi - Budongo Forest n. Sonso - 1°45'N, 31°35'E; 15.-25.I.97 - Th. Wagner leg. / C.a.35 1 / Holotypus - *Ortalia* ♂ - *minima* - Fürsch, 1999  
15.-25. January 1997  
Sonso River (Budongo Forest), Masindi, Uganda, Africa  
1°45'N, 31°35'E (site information)
- montivagaus* Fürsch, 2001a: 91-92 (*Nephus*)  
**Holotype ♂** - in: National Museums of Kenya (NMK), Nairobi  
**COL 2006/9,11** **2 PT**  
Mt. Kenya, NP-HQ, - 2550 m, 0°10.5'S, 37°8.8'E; - II.99 Th. Wagner leg. / Av 16 2 / Paratypus - *Nephus* - *montivagaus* - Fürsch, 1999  
February 1999  
Mount Kenya (mts.), Central, Kenya, Africa  
0°10'S, 37°11'E (exact gathering site information; imprecise data on original label!)
- COL 2006/10** **1 PT**  
18. February 1999  
SE-Aberdare, Central, Kenya, Africa  
0°23'S, 36°46'E (site information)
- rubida* Fürsch, 2001b: 104 (*Epilachna*)  
**Holotype ♂** - in: National Museums of Kenya (NMK), Nairobi  
**COL 2006/31-40** **10 PT**  
Mt. Kenya, Chogoria Rte., - 0°09'S/37°26'E, 2800 m, - 25.II.1999, Th. Wagner leg. / Paratype - *Epilachna* - *rubida* - Fürsch, 2000  
25. February 1999  
Chogoria Rte., Mount Kenya (mts.), Eastern, Kenya, Africa  
0°09'S, 37°26'E (site information)
- rubridorsis* Fürsch, 2001a: 92-93 (*Nephus*)  
**Holotype ♂** - in: National Museums of Kenya (NMK), Nairobi  
**COL 2006/17** **1 ♀ PT**  
Kenya Kikuyu, Gatamayu - 2330 m 0°58'S/36°42'E, - 2.99 leg. Th. Wagner / Paratypus - *Nephus* (*Sidis*) - *rubridorsis* ♀ - Fürsch 2000  
February 1999  
Gatamayu, Kikuyu, Central, Kenya, Africa  
0°58'S, 36°42'E (site information)
- rugulipennis* Fürsch, 1997: 18 (*Nephus*)  
**COL 2006/12** **♂ HT (Fig. 23)**  
Rwanda, Rusumo - Ibanda Makera, X.93 - Th. Wagner leg. / Holotypus - *Nephus* ♂ - *rugulipennis* - Fürsch, 1995  
October 1993
- Ibanda Makera, Rusumo, Kibungo, Rwanda, Africa  
2°15'S, 30°50'E (gathering site: estimated value)
- rwaudeusis* Fürsch, 1997: 16 (*Scymnus*)  
**COL 2006/47** **♂ HT (Fig. 24)**  
Rwanda, Rusumo - Ibanda Makera, X.93 - Th. Wagner leg. / T.n.5 3 / Holotypus - *Scymnus* (*Pullus*) - *rwaudeusis* ♂ - Fürsch, 1995  
October 1993  
Ibanda Makera, Rusumo, Kibungo, Rwanda, Africa  
2°15'S, 30°50'E (gathering site: estimated value)
- COL 2006/48 - 52** **5 PT**  
October 1993  
Ibanda Makera, Rusumo, Kibungo, Rwanda, Africa  
2°15'S, 30°50'E (gathering site: estimated value)
- striata* Fürsch, 1997: 20-22 (*Telsimia*)  
**COL 2006/131** **♂ HT (Fig. 25)**  
Rwanda, 1700 m - Cyamudongo, X.93 - Th. Wagner leg. / C.g.4 2 / Holotypus - *Telsimia* - *striata* ♂ - Fürsch, 1995  
October 1993  
Cyamudongo, Nyakabuye, Cyangugu, Rwanda, Africa  
2°33'S, 28°59'E (gathering site: estimated value)
- COL 2006/132** **1 ♀ PT**  
**COL 2006/133-134** **2 PT**  
October 1993  
Cyamudongo, Nyakabuye, Cyangugu, Rwanda, Africa  
2°33'S, 28°59'E (gathering site: estimated value)
- struweii* Fürsch, 2001b: 105-106 (*Epilachna*)  
**COL 2006/125** **♂ HT (Fig. 26)**  
Rwanda, Mont - Bisoke, X.92 / Holotypus - *Epilachna* - *struweii* ♂ - Fürsch, 1999  
October 1992  
Volcano Visoke (Bisoko), Volcano National Park, Ruhengeri, Rwanda, Africa  
1°28'S, 29°29'E (gathering site: estimated value)
- COL 2006/126-130** **5 PT**  
October 1992  
Volcano Visoke (Bisoko), Volcano National Park, Ruhengeri, Rwanda, Africa  
1°28'S, 29°29'E (gathering site: estimated value)
- vulpecula* Fürsch, 2001a: 93 (*Nephus*)  
**Holotype ♂** - in: National Museums of Kenya (NMK), Nairobi  
**COL 2006/18, 29** **2 PT**  
Kenya, Kikuyu, Gatamayu, - 2330 m 0°58'S/36°42'E - II.99 Th. Wagner leg. / P.I.4 2 / Paratypus - *Nephus* - *vulpecula* - Fürsch, 1999  
February 1999  
Gatamayu, Kikuyu, Central, Kenya, Africa  
0°58'S, 36°42'E (site information)
- COL 2006/19-28, 30** **11 PT**  
18. February 1999  
SE-Aberdare, Central, Kenya, Africa  
0°23'S, 36°46'E (site information)



*wagneri* Fürsch, 1995: 30 (*Boschalis*)

- COL 2006/119** ♂ HT (Fig. 27)  
Rwanda, Nyakabuye - Cyamudongo X.93 - Th. Wagner leg.  
/ C.g.93 / Holotype - *Boschalis* - *wagneri* ♂ - Fürsch, 1995  
October 1993  
Cyamudongo, Nyakabuye, Cyangugu, Rwanda, Africa  
2°33'S, 28°59'E (gathering site: estimated value)
- COL 2006/120-124** 5 PT  
October 1993  
Cyamudongo, Nyakabuye, Cyangugu, Rwanda, Africa  
2°33'S, 28°59'E (gathering site: estimated value)

*wagneri* Fürsch, 2001b: 103 (*Scotoscymnus*)

**Holotype** ♂ - in: National Museums of Kenya (NMK), Nairobi, 3 paratypes dto.

- COL 2006/82-86** 5 PT  
Kenya, SE-Aberdare, - 0°23'S/36°46'E, 2750 m, - 18.II.99  
Th. Wagner leg. / P.I. 263 / Paratypus - *Scotoscymnus* -  
*wagneri* - Fürsch, 1999  
18. February 1999  
SE-Aberdare, Central, Kenya, Africa  
0°23'S, 36°46'E (site information)

*wagneri* Fürsch, 2006a: 116; 2006b: 266 (*Stethorus*)

**Holotype** ♂ - in: National Museums of Kenya (NMK), Nairobi, 32 paratypes dto.

- COL 2007/60-65** 6 PT  
Kenya, Kakamega F., - 0°22'N/34°50'E, 1600 m, - 7-11.II.99,  
Th. Wagner leg. / Paratypus - *Stethorus* - *wagneri* - Fürsch,  
2005  
7.-11. February 1999  
Kakamega Forest, Western, Kenya, Africa  
0°17'N, 34°53'E (exact gathering site information;  
imprecise data on original label!)
- COL 2007/66** 1 PT  
October 2002  
Busumbuli River, Kakamega Forest, Western, Kenya, Africa  
0°19'N, 34°52'E (exact gathering site information;  
imprecise data on original label!)
- COL 2007/67-68** 2 PT  
October 2001
- COL 2007/69-74** 6 PT  
January 2002
- COL 2007/75** 1 PT  
October 2002
- COL 2007/76-78** 3 PT  
January 2003  
Colobus Trail, Kakamega Forest, Western, Kenya, Africa  
0°21'N, 34°51'E (exact gathering site information;  
imprecise data on original label!)
- COL 2007/79** 1 PT  
January 2002
- COL 2007/80-81** 2 PT  
January 2003  
Isiukhu River, Kakamega Forest, Western, Kenya, Africa

0°20'N, 34°53'E (exact gathering site information;  
imprecise data on original label!)

- COL 2007/82-84** 3 PT  
January 2002
- COL 2007/85-86** 2 PT  
October 2002
- COL 2007/87-88** 2 PT  
January 2003  
Kisere Forest, Kakamega Forest, Western, Kenya, Africa  
0°24'N, 34°54'E (site information)
- COL 2007/89-94** 6 PT  
January 2002
- COL 2007/95-97** 3 PT  
January 2003  
Yala River, Kakamega Forest, Western, Kenya, Africa  
0°12'N, 34°53'E (exact gathering site information;  
imprecise data on original label!)

## DERMESTIDAE

*rusumoensis* Háva & Herrmann, 2002: 254 (*Orphinus*)

- COL 2007/254** ♂ HT (Fig. 28)  
Rwanda, Rusumo - Ibanda Makera, X.93 - Th. Wagner leg.  
/ Holotypus - *Orphinus* (*Orphinus*) - *rusumoensis* n. sp. ♂ -  
det. J. Háva & A. Herrmann 2002  
October 1993  
Ibanda Makera, Rusumo, Kibungo, Rwanda, Africa  
2°15'S, 30°50'E (gathering site: estimated value)

*wagneri* Háva & Herrmann, 2002: 253 (*Orphinus*)

- COL 2007/255** ♂ HT (Fig. 29)  
Rwanda, Rusumo - Ibanda Makera, X.93 - Th. Wagner leg.  
/ Holotypus - *Orphinus* (*Orphinus*) - *wagneri* n. sp. ♂ - det.  
J. Háva & A. Herrmann 2002  
October 1993  
Ibanda Makera, Rusumo, Kibungo, Rwanda, Africa  
2°15'S, 30°50'E (gathering site: estimated value)

## HYDROPHILIDAE

*magnus* Hebauer, 2002b: 6 (*Allocotocerus*)

- COL 2006/135-136** 2 PT  
Kenya, Kakamega F., - 0°22'N/34°50'E, 1600 m, - 7-11.II.99,  
Th. Wagner leg. / Paratypus - *Allocotocerus* - *magnus*  
sp. n. - des. F. Hebauer  
7.-11. February 1999  
Kakamega Forest, Western, Kenya, Africa  
0°17'N, 34°53'E (exact gathering site information;  
imprecise data on original label!)
- COL 2006/137-138** 2 PT  
05.-15. Jan. 1997  
Sonso River (Budongo Forest), Masindi, Uganda, Africa  
1°45'N, 31°35'E (site information)

*melinus* Hebauer, 2001: 384 (*Enochrus*)

COL 2006/141

1 PT

Uganda District Masindi - Budongo Forest n. Sonso - 1°45'N, 31°35'W 19.-30.VI.95 - Th. Wagner leg. / Paratypus / *Enochrus* (Meth.) - *melinus* sp. n. - det. F. HEBAUER 19.-30. June 1995

Sonso River (Budongo Forest), Masindi, Uganda, Africa 1°45'N, 31°35'E (exact gathering site information; error on original label!)

*perssoni* Hebauer, 2002a: 267 (*Enochrus*)

COL 2006/140

1 PT

Kenya, SE-Aberdare, - 0°23'N/36°46'E, 2750 m, - 16.-21.II.1999 Th. Wagner leg. / Paratypus / *Enochrus* (Meth.) - *perssoni* sp. n. - det. F. HEBAUER

16.-21. February 1999

SE-Aberdare, Central, Kenya, Africa 0°23'N, 36°46'E (site information)

*wagneri* Hebauer, 2002b: 14 (*Helochares*)

COL 2006/139

1 PT

Kenya, Kakamega F. - 0°22'N/34°50'E, 1600 m, - 7-11.II.99, Th. Wagner leg. / Paratypus - *Helochares* - *wagneri* sp. n. - des. F. Hebauer

7.-11. February 1999

Kakamega Forest, Western, Kenya, Africa 0°17'N, 34°53'E (exact gathering site information; imprecise data on original label!)

## LAEMOPHLOEIDAE

*wagneri* Karner, 1997: 95-98 (*Notolaemus*)

COL 2006/142

♂ HT (Fig. 30)

Rwanda, Rusumo - Ibanda Makera, X.93 - Th. Wagner leg. / T.n. 5 / Holotypus - *Notolaemus* - *wagneri* - n.sp. ♂ - M. Karner 1996

October 1993

Ibanda Makera, Rusumo, Kibungo, Rwanda, Africa 2°15'S, 30°50'E (gathering site: estimated value)

COL 2006/143

1 ♂ PT

COL 2006/144-148

5 ♀ PT

October 1993

Ibanda Makera, Rusumo, Kibungo, Rwanda, Africa 2°15'S, 30°50'E (gathering site: estimated value)

## MELYRIDAE

*adrastus* Evers, 1998: 63-64 (*Sphingopalpus*)

COL 2006/164

♂ HT (Fig. 31)

Rwanda, Rusumo - Ibanda Makera, X.93 - Th. Wagner leg. / T.n.8 / Von *Teclea nobilis* gefoggt / Holotypus ♂ / *Sphingopalpus* - *adrastus* Evers - A. Evers det. 1997

October 1993

Ibanda Makera, Rusumo, Kibungo, Rwanda, Africa 2°15'S, 30°50'E (gathering site: estimated value)

*carapae* Evers, 1998: 60-62 (*Attalus*)

COL 2006/149,151,153

3 ♀ PT

Rwanda, Nyungwe - Kamiranzovu, 2000 m - Th. Wagner leg. X.93 / C.g.2 / Von *Carapa grandiflora* gefoggt / Paratypus ♀ / *Attalus* - *carapae* Evers - A. Evers det. 1997

October 1993

Kamiranzovu, Nyungwe Forest, Cyangugu, Rwanda, Africa

2°29'S, 29°09'E (gathering site: estimated value)

COL 2006/150

1 ♀ PT

October 1993

Cyamudongo, Nyakabuye, Cyangugu, Rwanda, Africa 2°33'S, 28°59'E (gathering site: estimated value)

COL 2006/152

1 ♂ PT

October 1993

Karengera, Cyangugu, Rwanda, Africa

2°31'S, 29°02'E (gathering site: estimated value)

*karengerae* Evers, 1998: 62 (*Attalus*)

COL 2006/154

1 ♀ AT

Rwanda, 1700 m - Karengera, X.93 - Th. Wagner leg. / C.g.1 1 / Von *Carapa grandiflora* gefoggt / *Allotypus* ♀ / *Attalus* - *karengerae* Evers - A. Evers det. 1997

October 1993

Karengera, Cyangugu, Rwanda, Africa

2°31'S, 29°02'E (gathering site: estimated value)

*lateridentatus* Evers, 1998: 64 (*Colotes*)

COL 2006/165

♂ HT (Fig. 32)

Rwanda, Rusumo - Ibanda Makera, X.93 - Th. Wagner leg. / T.n.6 / Von *Teclea nobilis* gefoggt / Holotypus ♂ / ♂ / *Colotes lateridentatus* Evers - A. Evers det. 1997

October 1993

Ibanda Makera, Rusumo, Kibungo, Rwanda, Africa

2°15'S, 30°50'E (gathering site: estimated value)

COL 2006/166-170

5 ♀ PT

October 1993

Ibanda Makera, Rusumo, Cyangugu, Rwanda, Africa

2°15'S, 30°50'E (gathering site: estimated value)

*stilifer* Evers, 1998: 60 (*Afrocarphurus*)

COL 2006/163

1 ♀ PT

Rwanda, Karengera - Cyamudongo X.93 - Th. Wagner leg. / C.g.3 / Von *Carapa grandiflora* gefoggt / Paratypus ♀ / *Afrocarphurus* - *stilifer* Evers - A. Evers det. 1997 / 1 Paratypus - ♀ behalten

October 1993

Cyamudongo, Nyakabuye, Cyangugu, Rwanda, Africa

2°33'S, 28°59'E (gathering site: estimated value)

*tecleae* Evers, 1998: 64-65 (*Morphotroglops*)

COL 2006/162

1 ♀ AT

Rwanda, Rusumo - Ibanda Makera, X.93 - Th. Wagner leg. / T.n.8 / Von *Teclea nobilis* gefoggt / *Allotypus* ♀ / *Morphotroglops* - *tecleae* Evers - A. Evers det. 1997



Figs 28–36. *Orphinus rusumoensis* Háva & Herrmann, 2002 (28) ♂ HT, *Orphinus wagneri* Háva & Herrmann, 2002 (29) ♂ HT, *Notolaemus wagneri* Karner, 1997 (30) ♂ HT, *Sphinginopalpus adrastus* Evers, 1998 (31) ♂ HT, *Colotes lateridentatus* Evers, 1998 (32) ♂ HT, *Afrobaeus wagneri* Evers, 1998 (33) ♂ HT, *Attalus wagneri* Evers, 1998 (34) ♂ HT, *Stenus arborarius* Puthz, 1999 (35) ♂ HT, *Stenus wagnerianus* Puthz, 1999 (36) ♂ HT: Habitus in dorsal view.



October 1993

Ibanda Makera, Rusumo, Kibungo, Rwanda, Africa

2°15'S, 30°50'E (gathering site: estimated value)

*wagneri* Evers, 1998: 65 (*Afrobaeus*)**COL 2006/155** ♂ HT (Fig. 33)

Rwanda, Karengera - Cyamudongo X.93 - Th. Wagner leg.

/ C.g.4 / Von Carapa grandiflora gefoggt / Holotypus ♂ /

Afrobaeus - wagneri Evers - A. Evers det. 1997

October 1993

Karengera, Cyangugu, Rwanda, Africa

2°31'S, 29°02'E (gathering site: estimated value)

**COL 2006/158,160** 2 ♀ PT**COL 2006/159** 1 ♂ PT

October 1993

Karengera, Cyangugu, Rwanda, Africa

2°31'S, 29°02'E (gathering site: estimated value)

**COL 2006/161** 1 ♀ PT

October 1993

Cyamudongo, Nyakabuye, Cyangugu, Rwanda, Africa

2°33'S, 28°59'E (gathering site: estimated value)

*wagneri* Evers, 1998: 62-63 (*Attalus*)**COL 2006/156** ♀ HT (Fig. 34)

Rwanda, Karengera - Cyamudongo X.93 - Th. Wagner leg.

/ C.g.1 / Von Carapa grandiflora gefoggt / Holotypus ♀ /

Attalus - wagneri Evers - A. Evers det. 1997

October 1993

Karengera, Cyangugu, Rwanda, Africa

2°31'S, 29°02'E (gathering site: estimated value)

**COL 2006/157** 1 ♀ PT

October 1993

Kamiranzovu, Nyungwe Forest, Cyangugu, Rwanda,

Africa

2°29'S, 29°09'E (gathering site: estimated value)

**STAPHYLINIDAE***arborarius* Puthz, 1999a: 15-17 (*Stenus*)**COL 2006/171** ♂ HT (Fig. 35)

Uganda, District Masindi - Budongo Forest n. Sonso -

1°45'N, 31°35'W 11.-20.VII.95 - Th. Wagner leg. / T.n.17

4 / Puthz, 1998 / *Stenus* - arborarius - spec. nov. - det. V.

Puthz 1998 / 1 pt behalten

11.-20. July 1995

Sonso River (Budongo Forest), Masindi, Uganda, Africa

1°45'N, 31°35'E (exact gathering site information; error on original label!)

**COL 2006/172** 1 ♂ PT

15.-25. January 1997

Sonso River (Budongo Forest), Masindi, Uganda, Africa

1°45'N, 31°35'E (gathering site)

*wagneri* Puthz, 1999b: 21 (*Megalopinus*)**COL 2007/279** ♀ HT (Fig. 36)

Uganda District Masindi - Budongo Forest n. Sonso -

1°45'N, 31°35'W 19.-30.VI.95 - Th. Wagner leg. / T.r.3 1 /

Holotypus / *Megalopinus* - wagneri - spec. nov. - det. V.

Puthz 1998

19.-30. June 1995

Sonso River (Budongo Forest), Masindi, Uganda, Africa

1°45'N, 31°35'E (exact gathering site information; error on original label!)

*wagnerianus* Puthz, 1999a: 18-19 (*Stenus*)**COL 2006/173** ♂ HT (Fig. 37)

Rwanda, Nyungwe - Kamiranzovu, 2000 m - Th. Wagner

leg. X.93 / ♂ - Holotypus / *Stenus* - wagnerianus - spec.

nov. - det. V. Puthz 1998 / 1 pt behalten

October 1993

Kamiranzovu, Nyungwe Forest, Cyangugu, Rwanda,

Africa

2°29'S, 29°09'E (gathering site: estimated value)

**COL 2006/174** 1 ♂ PT

October 1993

Kamiranzovu, Nyungwe Forest, Cyangugu, Rwanda,

Africa

2°29'S, 29°09'E (gathering site: estimated value)

**Acknowledgements.** We thank Dr. Bradley J. Sinclair (ZFMK, Bonn) for checking the English text and Dr. Thomas Wagner (University Koblenz) for valuable information.

**REFERENCES**

- ADLBAUER, K. 2006. Weitere neue Boekkäfer aus der Äthiopischen Region (Coleoptera, Disteniidae und Cerambycidae). *Les Cahiers Magellanes* **55**: 1-21.
- EVERS, M. J. A. 1998. Die kronenbewohnenden Malachiidae (Coleoptera) dreier Baumarten in Rwanda und Kivu. *Bonner Zoologische Beiträge* **48** (1): 59-66.
- FREUND, W. & WAGNER, TH. 2003. Revision of *Bonesioides* Laboissière, 1925 (Coleoptera; Chrysomelidae; Galerucinae) from continental Africa. *Journal of Natural History* **37**: 1915-1976.
- FRIESER, R. 1997. Teilergebnisse der von Thomas Wagner in Zentralafrika im Rahmen der Baumkronenbenebelung erbeuteten Anthribiden (Coleoptera: Anthribidae). *Aeta Coleopterologica XIII* (1): 11-20.
- FÜRSCH, H. 1995. Revision der Gattung *Boschalis* Weise, 1897, mit Beschreibung neuer Arten. (Coleoptera, Coccinellidae). *Mitteilungen der Münchner Entomologischen Gesellschaft* **85**: 21-31.
- FÜRSCH, H. 1997. Coccinellidae (Coleoptera) aus Rwanda. *Bonner Zoologische Beiträge* **47** (1/2): 13-39.
- FÜRSCH, H. 2001a. Zur Coccinelliden-Fauna der Wälder in Zentral- und Ostafrika, mit Beschreibungen neuer Arten (Coleoptera, Coccinellidae). *Entomologische Zeitschrift* **111** (3): 90-94.

- FÜRSCH, H. 2001b. Zur Coccinelliden-Fauna der Wälder in Zentral- und Ostafrika, mit Beschreibungen neuer Arten (Coleoptera, Coccinellidae). *Entomologische Zeitschrift* **111** (4): 98–107.
- FÜRSCH, H. 2006a. Zur Marickkäferfauna des Kakamega Forest in Kenya mit biogeographischen Anmerkungen (Coleoptera, Coccinellidae). *Entomologische Zeitschrift* **116** (3): 113–117.
- FÜRSCH, H. 2006b. Die afrotropischen Arten von *Stethorus* Weise, 1885 (Coleoptera: Coccinellidae, Scymninae). *Entomologische Zeitschrift* **116** (6): 261–268.
- HÁVA, J. & HERRMANN, A. 2003. *Orphimus wagneri* sp. n. and *Orphimus rusomoensis* sp. nov. (Coleoptera: Dermestidae) from Rwanda. *Entomologische Zeitschrift* **113** (8): 253–254.
- HEBAUER, F. 2001. Taxonomische Studien zur Hydrophiliden-Gattung *Enochrus* Thomson, 1859. 2. Teil: Die afrikanischen Arten der Untergattung *Methydrus* Rey, 1885. A: Die *Enochrus meracius*-Gruppe (Coleoptera, Hydrophilidae). *Beiträge zur Entomologie* **51** (2): 375–391.
- HEBAUER, F. 2002a. Taxonomische Studien zur Hydrophiliden-Gattung *Enochrus* Thomson, 1859. – 3. Teil: Die afrikanischen Arten der Untergattung *Methydrus* Rey, 1885. B: Die *Enochrus natalensis*-Gruppe. *Beiträge zur Entomologie* **52** (1): 255–269.
- HEBAUER, F. 2002b. New Hydrophilidae of the Old World (Coleoptera, Hydrophilidae). *Acta Coleopterologica* **XVIII** (3): 3–24.
- KÄRNER, M. 1997. A new species of *Notolaemus* Lefkovitch from Rwanda (Coleoptera: Lacmophloeidae). *Bonner Zoologische Beiträge* **47** (1–2): 95–98.
- MIDDELHAUVE, J. & WAGNER, TH. 2001. Revision of *Afrocrania* (Coleoptera: Chrysomelidae, Galerucinae). Part I: Species in which the males have head cavities or extended clytral extrusions. *European Journal of Entomology* **98**: 511–532.
- PUTIČ, V. 1999a. Zwei neue afrikanische Arten der Gattung *Stenus* Latreille, 1796 und eine taxonomische Bemerkung (Col., Staphylinidae). *Zeitschrift der Arbeitsgemeinschaft Österreichischer Entomologen* **51** (1): 15–20.
- PUTIČ, V. 1999b. *Megalopinus wagneri* sp.n. aus Uganda (Coleoptera, Staphylinidae). *Zeitschrift der Arbeitsgemeinschaft Österreichischer Entomologen* **51** (1): 21–24.
- WAGNER, TH. 2000a. New *Monolepta* species (Coleoptera: Chrysomelidae, Galerucinae) from Eastern Africa. *Entomologische Zeitschrift* **110** (2): 34–40.
- WAGNER, TH. 2000b. Revision of Afrotropical *Monolepta* Chevrolat, 1837 (Coleoptera, Chrysomelidae, Galerucinae). Part I: Species with red and black coloured elytra, pronotum and head, with description of new species. *Entomologische Zeitschrift* **110** (8): 226–237.
- WAGNER, TH. 2001a. New *Monolepta* species (Coleoptera, Chrysomelidae, Galerucinae) from Central and Southern Africa. *Entomologische Blätter* **96**: 199–209.
- WAGNER, TH. 2001b. Revision of Afrotropical *Monolepta* Chevrolat, 1837 (Coleoptera: Chrysomelidae, Galerucinae). Part II: Species with red elytra, pronotum and head, with descriptions of new species. *Bonner Zoologische Beiträge* **50** (1/2): 49–65.
- WAGNER, TH. 2002. Revision of Afrotropical *Monolepta* species (Coleoptera, Chrysomelidae, Galerucinae). Part III: Species with red elytra and yellow prothorax, including descriptions of new species. *Deutsche Entomologische Zeitschrift* **49** (1): 27–45.
- WAGNER, TH. & SCHERZ, X. 2002. *Afrocandezeza* gen. nov. from tropical Africa (Coleoptera: Chrysomelidae, Galerucinae). *Entomologische Zeitschrift* **112** (12): 357–362.
- WAGNER, TH. 2003. Revision of afrotropical *Monolepta* Chevrolat, 1837 (Coleoptera, Chrysomelidae, Galerucinae). – Part IV: Species with red head and thorax and black elytra or black elytra with red apex, with description of new species. *Annales Sciences Zoologiques, Miscellanea* **49**: 37–89.
- WAGNER, TH. 2005. Revision of the vincta Species-group of *Monolepta* Chevrolat, 1837 from Africa, Arabia and the Near East (Coleoptera: Chrysomelidae, Galerucinae). *Bonner Zoologische Beiträge* **53** (1/2): 255–282.

**Authors' addresses:** Karl-Heinz LAMPE (corresponding author), Dirk ROHWEDDER & Carola SCHMIDT, Zoologisches Forschungsmuseum Alexander Koenig (ZFMK), Adenauerallee 160, 53113 Bonn, Germany. E-Mail: k.lampe.zfmk@uni-bonn.de

Received: 22.12.2006

Accepted: 08.01.2007

Corresponding editor: M. Schmitt

# ZOBODAT - [www.zobodat.at](http://www.zobodat.at)

Zoologisch-Botanische Datenbank/Zoological-Botanical Database

Digitale Literatur/Digital Literature

Zeitschrift/Journal: [Bonn zoological Bulletin - früher Bonner Zoologische Beiträge.](#)

Jahr/Year: 2007

Band/Volume: [55](#)

Autor(en)/Author(s): Lampe Karl-Heinz, Rohwedder Dirk, Schmidt Carola

Artikel/Article: [African Coleoptera Type Specimens collected by Thomas Wagner in the collection of the ZFMK 163-178](#)