

# Abbildungen von Flügelgeäder der Coleopteren.

Von K. J. W. Bernet Kempers, Haag.

(33 Tafeln mit 792 Figuren.)

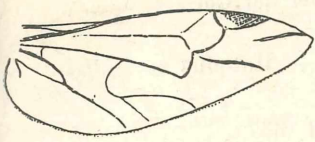
Die angegebenen Zahlen bedeuten die Figuren.

## I. Adepghaga.

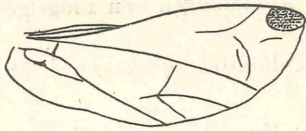
1. Cicindelidae: *Cicindela cincta* L. 1. — *Odontochila bipunctata* F. 2. — *chrysis* F. 3. — *Pseudoxychila lateguttata* Dej. 4. — *biguttata* Dej. 13. — *Phaeoxantha bifasciata* Brullé 5. — *Tetracha fulgida* Brullé 6. — *spinosa* Brullé 14. — *Pogonostoma nigricans* Klug 7. — *Therates labiatus* F. 8. — *Distypsidera gruti* Pasc. 9. — *Heptodonta analis* F. 10. — *Pentacomia egregia* Chaud. 11. — *Thopectica diana* Thoms. 12. — *Collyris bonnellii* Guér. 15.

2. Carabidae: *Mormolyce (Mormolycini) phyllodes* Hag. 16. — *Calosoma (Carabini) sycophanta* L. 17. — *reticulatum* F. 53. — *Carabus granulatus* L. 18. — *Leistus (Nebriini) rufescens* F. 19. — *Nebria brevicollis* F. 20. — *Notiophilus (Nctiophilini) aquaticus* L. 21. — *Omophon (Omophonini) limbatus* F. 22. — *Elaphrus (Elaphrini) cupreus* Dfts. 23. — *Lorocera (Lorocerini) pilicornis* F. 24. — *Dysehirus (Scaritini) thoracicus* Rossi 25. — *Clivina fossor* L. 26. — *conexicollis* 54. — *Brosicus (Brosicini) cephalotes* L. 27. — *Tachypus (Bembidiini) flavipes* L. 28. — *Bembidium ustulatum* L. 29. — *Trechus (Trechini) 4-striatus* Schrank 30. — *Calathus (Pterostichini) fuscus* F. 31. — *Platynus ruficornis* Goeze 32. — *Pterostichus vulgaris* L. — *coerulescens* L. 33. — *Amara (Amarini) spreta* Dej. 34. — *Zabrus (Zabrini) tenebrioides* Goeze 35. — *Harpalus (Harpalini) pubescens* Müll. 36. — *Anisodactylus binotatus* F. 37. — *Dichirotrichus pubescens* Payk. 38. — *Stenolophus mixtus* Herbst 39. — *Acupalpus meridianus* L. 40. — *Badister (Licinini) bipustulatus* F. 41. — *Chlaenius (Chlaeniini) nitidulus* Schrank 42. — *Panagaeus (Panagaeini) crux-major* L. 43. — *Lebia (Lebiini) cyanocephala* L. 51. — *Dromius 4-maculatus* L. 44. — *Odacantha (Odacanthini) melanura* L. 45. — *Brachynus (Brachynini) explodens* Dfts. 46. — *Catascopus angulatus* Chaud. 47. — *Ophionea interstitialis* 48. — *Dendrocellus geniculatus* 50. — *Colpodes sp.* 52. — *Trichoglottus punctilabris* Mac Leay 55. — *Platymetopus puncticollis* Bosc 56.

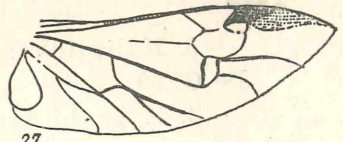




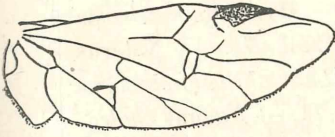
25



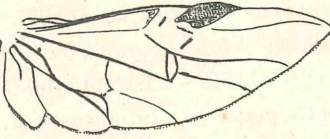
26



27



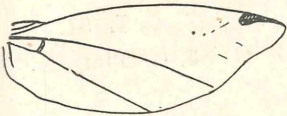
28



29



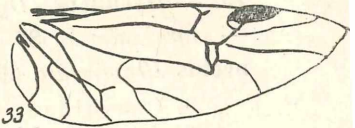
30



31



32



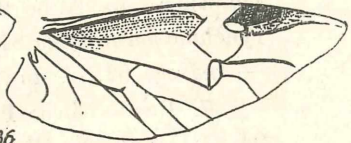
33



34



35



36



37



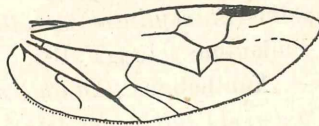
38



39



40



41



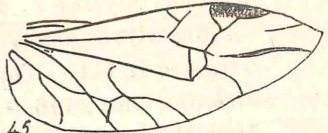
42



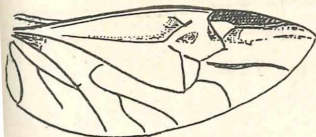
43



44



45



46



47



48

6\*

3. Haliplidae: *Peltodites caesus* Dfts. 58. — *Haliplus ruficollis* De G. 59.

4. Hygrobiidae: *Hygrobia tarda* Herbst 64, 65.

5. Dytiscidae: *Hydroporus (Hydroporini) dorsalis* F. 69. — *pictus* F. 70. — *Hyphydrus ferrugineus* L. 67. — *Hygrotus versicolor* Schall 68. — *Coelambus impressopunctatus* Schall. 71. — *Noterus (Noterini) clavicornis* De G. 73. — *Laccophilus (Laccophilini) obscurus* Panz. 72. — *Ilybius (Colymbetini) fuliginosus* F. 74. — *Agabus chalconotus* Panz. 75. — *femorialis* Payk 76. — *Euneetus sticticus* 77. — *Rhantus (Colymbetini) punctatus* Fourc 78. — *Colymbetes fuscus* L. 79. — *Hydaticus (Dytiscini) vittatus* 84. — *Dytiscus latissimus* L. 81. — *marginalis* L. 82. — *Cybister laterimarginalis* De G. 83. — *Platyneetus 10-punctata* 66. — *Aeilus sulcatus* L. 80

6. Gyrinidae: *Gyrinus (Gyrinini) sp.* 88. — *natator* L. 89. — *marinus* Gyll. 90. — *Orectochilus (Orectochilini) villosus* Müll. 91. — *marginipennis* Aubé 92. — *Orectogyrus congoensis* 86. — *Porrhorynchus marginatus* 87. — *landaisi* 63. — *Dineutus subspinosus* 61. — *indicus* 62. — *australis* 85. — *Enhydrus sulcatus* 93.

7. Paussidae: *Paussus cervinus* Kraatz 57. — *armatus* Westw. 94. — *spinicoxis* Westw. 95. — *hova* Dohrn 60. — *cucullatus* Westw. 96. — *Cerapterus horsfieldi* Westw. 97. — *Paussomorphus chevrolati* Westw. 98.

8. Rhysodidae: *Rhysodes exaratus* (nach Redtenbacher) 99.

## II. Staphylinoidea.

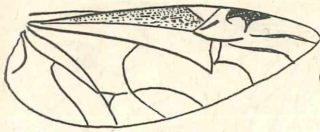
9. Staphylinidae: *Aleochara (Aleocharini) lanuginosa* Grav. 100. — *Tachynus (Tachyporini) flavipes* F. 101. — *Quedius (Quediini) mesomelinus* Mrsh. 102. — *Creophilus (Staphylinini) maxillosus* L. 103. — *Staphylinus olens* Müll. 104. — *Philonthus politus* F. 105. — *Cafius (Staphylinini) xantholoma* Grav. 106. — *Xantholinus (Xantholini) punctulatus* Payk. 107. — *Lathrobium (Paederini) fulvipenne* Grav. 108. — *Stenus (Stenini) bipunctatus* Er. 109. — *Oxyporus (Oxyporini) rufus* L. 110. — *Oxytelus rugosus* F. 111. — *Omalium (Omalini) rivulare* Payk. 112. — *Megarthritis depressus* Payk. 113. — *Tachynus (Tachyporini) subterraneus* L. 114. — *Coprophilus (Oxytelini) striatulus* F. 115. — *Deleaster dichrous* Grav. 116. — *Anthobium (Omalini) longipenne* Er. 117. — *Leptocheirus unicolor* Er. 118. — *Trigonurus sp.* 119.

10. Pselaphidae: *Reichenbachia helferi* Schmidt 122.

11. Micropeplidae: *Micropeplus fulvus* Er. 123.

12. Scydmaenidae: *Clidicus grandus*. Casteln. 124.

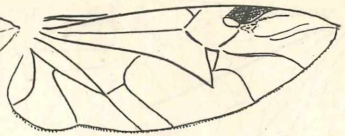




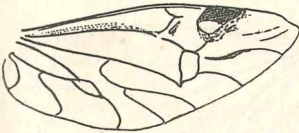
49



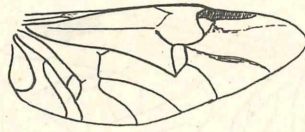
50



51



52



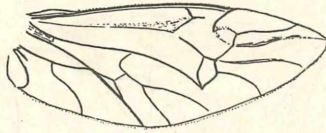
53



54



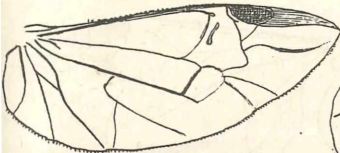
55



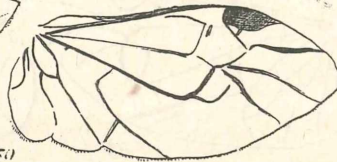
56



57



58



59



60



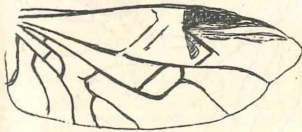
61



62



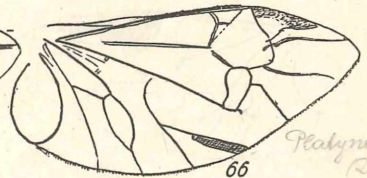
63



64



65



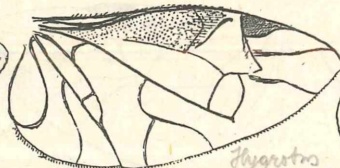
66

*Platynus*



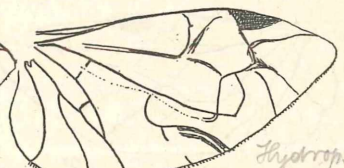
67

*Hypogonus*



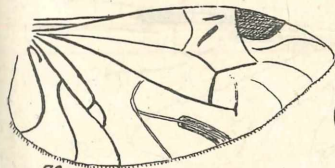
68

*Hypogonus*



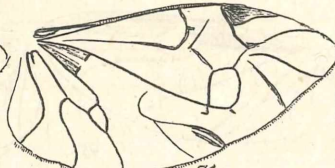
69

*Hypogonus*

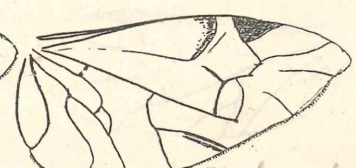


70

*Hypogonus*

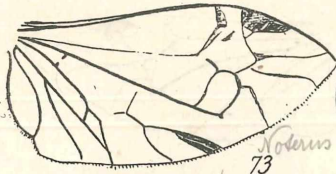


71

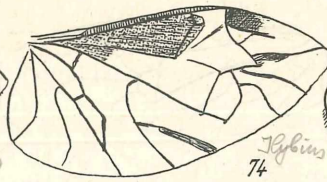


72

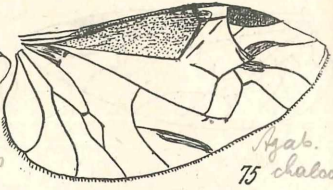
*Hypogonus*



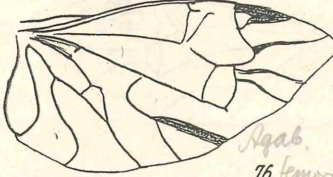
*Agabus*



*Hybicus*



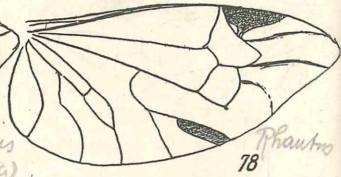
*Agab. chalcid.*



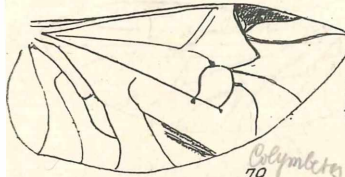
*Agab. femoralis*



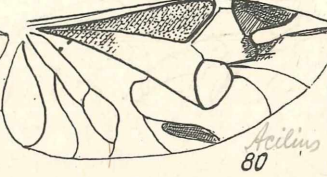
*Eumectus (Dytisc)*



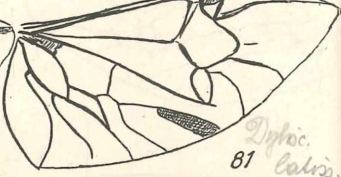
*Phaenoc.*



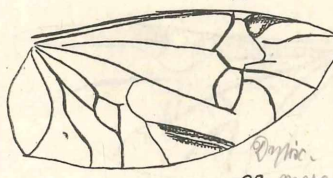
*Polymerus*



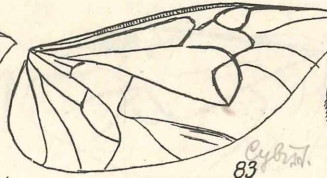
*Acilins*



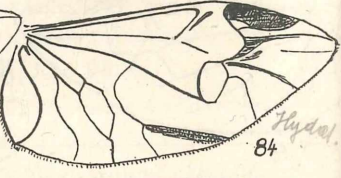
*Dytisc. lateris.*



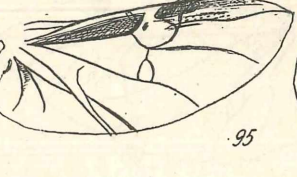
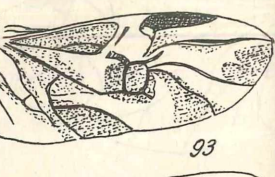
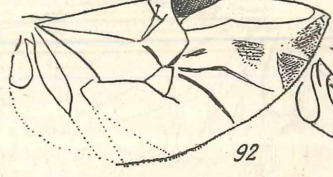
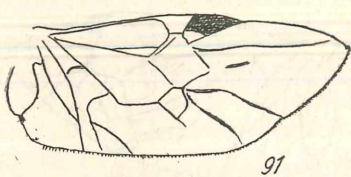
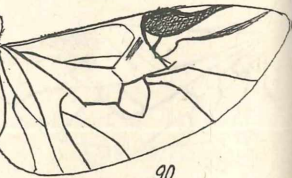
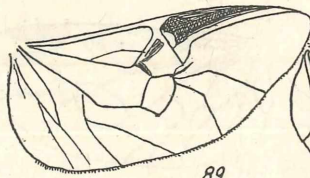
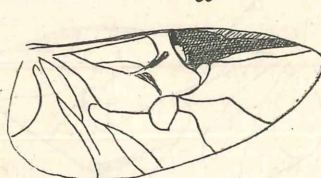
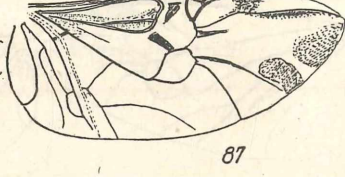
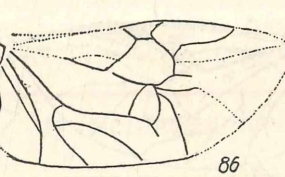
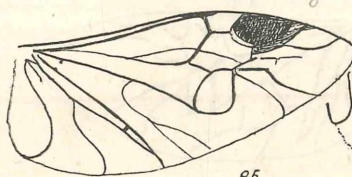
*Dytisc. morio*



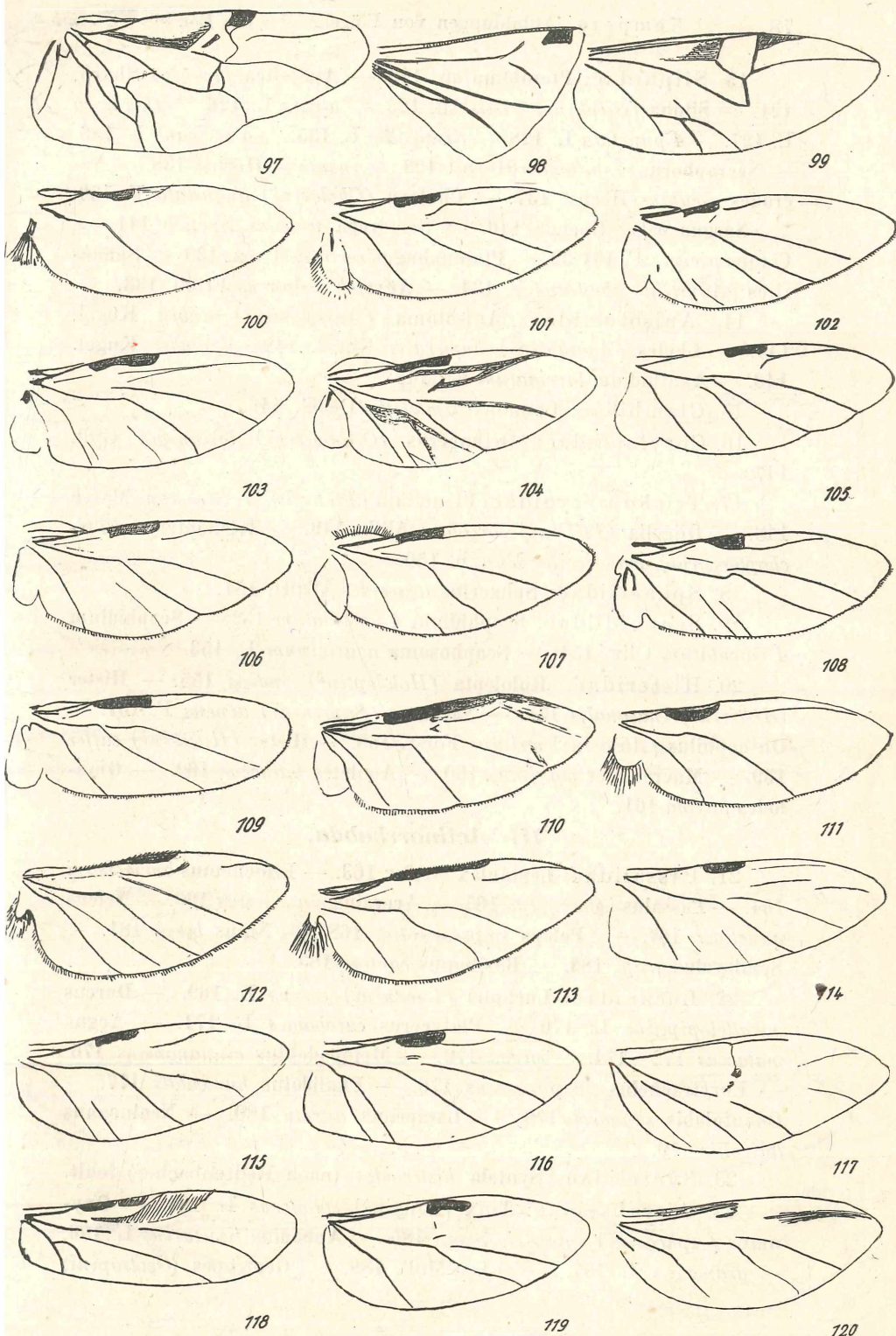
*Agab. (Dytisc)*



*Hydral.*







13. Silphidae: **Pteroloma** sp. 120. — *Apatetica javanica* Sharp. 121. — *Silpha* (*Silphini*) *tristis* Ill. 125. — *atrata* L. 126. — *thoracica* L. 127. — *4-punctata* L. 128. — *discicollis* L. 135. — *americana* L. 136. — *Necrophorus vespilloides* Herbst 129. — *insularis* Herbst 138. — *Necrodes osculans* Herbst 137. — *Choleva* (*Cholevini*) *angustata* F. 130. — *Nargus velox* Spence 140. — *Sciodrepa watsoni* Spence 141. — *Catops picipes* F. 131/32. — *Ptomaphagus sericeus* Panz. 139. — *Sphaerites* (*Agyrtini*) *glabratus* F. 134. — *Agyrtes castaneus* Fröhl. 133.

14. Anisotomidae: **Anisotoma** (*Anisotomini*) *dubia* Kugel. 145. — *Liodes* (*Agathidini*) *humeralis* Kugel. 142. — *glaber* Kugel. 143. — *Agathidium laevigatum* Er. 144.

15. Clambidae: **Clambus** *armadillo* De G. 146.

16. Corylophidae: **Orthoperus** (*Orthoperini*) *brunnipes* Gyll. 147.

17. Trichopterygidae: **Ptenidium** (*Ptenidiini*) *evanescens* Marsh 148. — *Oligella* (*Ptiliini*) *foveolata* Allib. 149. — *Trichopteryx* (*Trichopterygini*) *grandicollis* Mannh. 150.

18. Sphaeriidae: **Sphaerius** *acaroides* Waltl. 151.

19. Scaphidiidae: **Scaphidium** *4-pustulatum* 152. — *Scaphidium 4-maculatum* Oliv. 154. — *Scaphosoma agaricinum* L. 153.

20. Histeridae: **Hololepta** (*Hololeptini*) *indica* 155. — *Hister* (*Histerini*) *inaequalis* 156. — *Saprinus* (*Saprinini*) *aeneus* F. 157. — *Onthophilus* (*Abraeini*) *striatus* Forst. 158. — *Hister* (*Histerini*) *caffer* 159. — *Macrohister maximus* 160. — *Apoletes foliaceus* 162. — *Omalodes foveola* 161.

### III. Actinorrhabda.

21. Passalidae: **Leptaulax** *bicolor* 163. — *Eriocnemus burmeisteri* 164. — *Passalus interruptus* 165. — *Aceraius marginatus* 166. — *Neleus punctiger* 167. — *Pelops impressicollis* 168. — *Ninus bergi* 181. — *Semieyelus grayi* 182. — *Basilianus cantori* 183.

22. Lucanidae: **Lucanus** (*Lucanini*) *cervus* L. 169. — *Dorcus parallelopipedus* L. 170. — *Platyceus caraboides* L. 171. — *Aegus malaccus* 172—174. — *ogivus* 173. — *Metopodontus cinnanomeus* 175. — *Eurytrachelus purpurascens* 176. — *Pholidotus humboldti* 177. — *Odontolabis sommeri* 178. — *Lamprima aurata* 180. — *Neolucanus laticollis* 179.

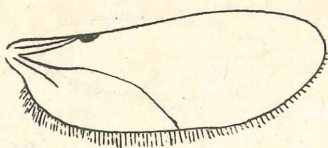
23. Syntelidae: **Syntela** *histeroides* (nach Redtenbacher) fehlt.

24. Scarabaeidae: **Trox** (*Trogini*) *sabulosus* L. 184. — *Oxyomus* (*Aphodiini*) *sylvestris* Scop. 185. — *Aphodius fimetarius* L. 186. — *granarius* L. 187. — *rufus* Mull. 188. — *Geotrupes* (*Geotropini*)

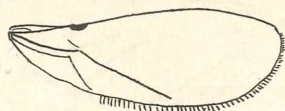




121



122



123



124



125



126



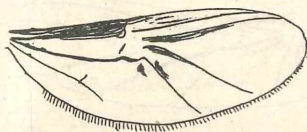
127



128



129



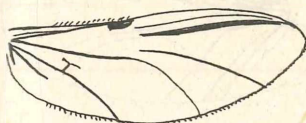
130



131



132



133



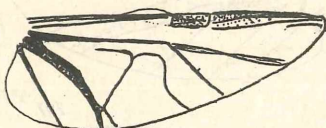
134



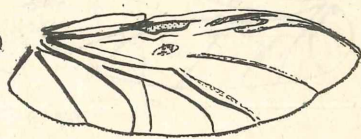
135



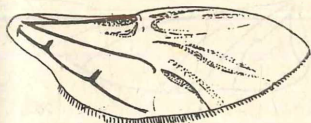
136



137



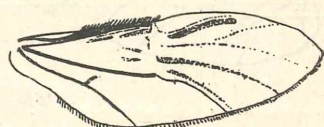
138



139



140



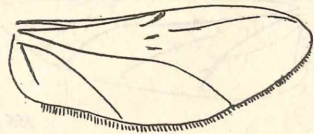
141



142



143

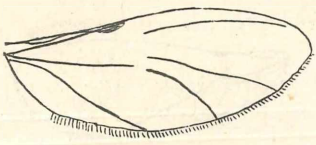


144

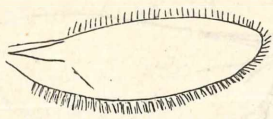
*Homaphysus*

*gibberipes*

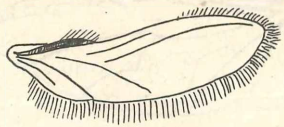
*Liodus glaber*



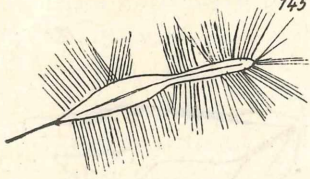
145



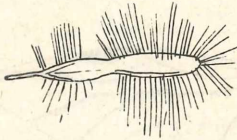
146



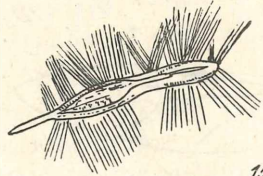
147



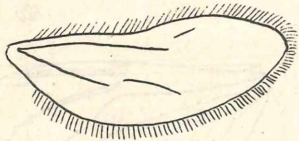
148



149



150



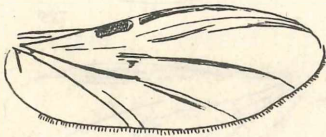
151



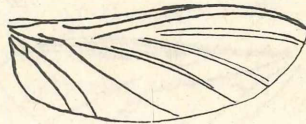
152



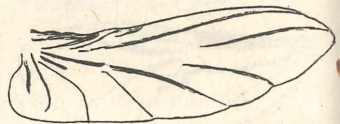
153



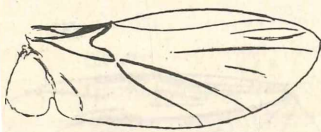
154



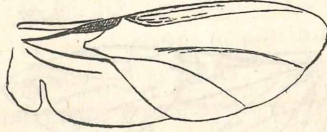
155



156



157



158



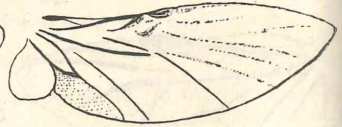
159



160



161



162



163



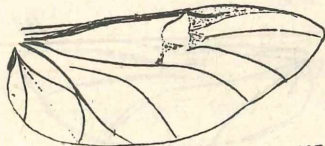
164



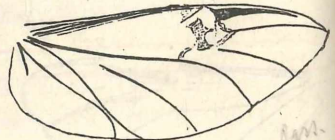
165



166



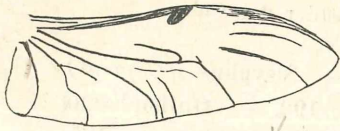
167



168

com.

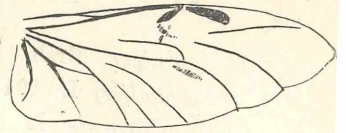




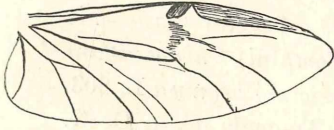
169



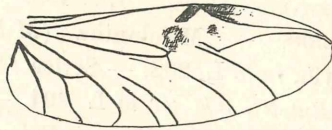
170



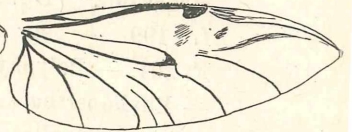
171



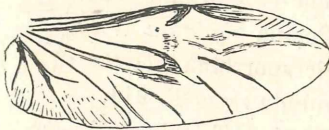
172



173



174



175



176



177



178



179



180



181



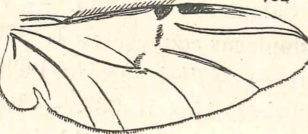
182



183



184



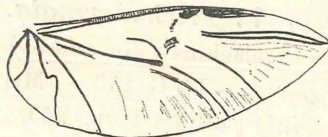
185



186



187



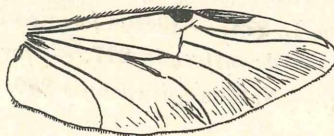
188



189



190



191



192

*spiniger* Mrsh. 189. — *vernalis* L. 190. — *Sisyphus* (*Coprini*) *schaefferi* L. 191. — *Onitocellus fulvus* Goeze 192. — *Onthophagus nuchicornis* L. 193. — *Copris lunaris* L. 194. — *hispanus* 195. — *Catharsius molossus* L. 196. — *Scarabaeus piceus* Ill. 197. — *Megasoma* (*Dynastini*) *elephas* Ill. 198. — *Oryctes nasicornis* L. 199. — sp. 200. — *Melolontha* (*Melolonthini*) *hippocastani* F. 201. — *Polyphylla fullo* L. 202. — *Serica* (*Sericini*) *brunnea* L. 203. — *Phyllopertha* (*Rutelini*) *horticola* L. 204. — *Anomala aenea* De G. 205. — *Hoplia farinosa* L. 206. — *Epicometus hirta* Poda 222. — *Pentelia descendens* Sharp. 207. — *Apogonia expeditionis* Rits. 208. — *Cetonia* (*Cetoniini*) *aurata* L. 209. — *Popilia biguttata* Wied. 210. — *Rhomborrhina hornemanni* 211. — *Dicranorrhina oberthuri* 212. — *Ischiopsopha lucivorax* Kr. 213. — *Macronota regia* F. 214. — ? ? 215. — *Valgus* (*Valgini*) *hemipterus* L. 216. — *Trichius* (*Trichiini*) *rosaceus* Voet. 217. — *Gnorimus nobilis* L. 218. — *Cetonia* (*Cetoniini*) *morio* L. 219. — *Anachalcos* (*Geotrupini*) *cupreus* F. 225. *Exophilus* (*Melolonthini*) *hypolinea* F. 224. — *Diplognatha* (*Cetoniini*) *gagates* F. 223.

25. Cupepidae: *Omnia stanleyi* (nach Handlirsch) 226. — *Cupes raffrayi* Fairm. 227 (nach d'Orchymont).

#### IV. Malacodermata.

26. Pyrophoridae: *Phengodes hieronymi* Haase 230.

27. Drilidae: *Drilus flavescens* Fourcr 229.

28. Lampyridae: *Luciola mingrelica* 231. — *pallescens* Gerh. 232. — *Lamprorhiza splendidula* L. 233. — *Lampyrus noctiluca* L. 234.

29. Lycidae: *Calopteron* sp. 235. — *Homalisus Fontis-bellaqui* Fourc 236. — *Lygistopterus sanguineus* L. 237.

30. Cantharidae: (*Thelephoridae*) *Thelephorus* (*Thelephorini*) *rusticus* Fallen 238. — *lividus* L. 239. — *Rhagonycha atra* L. 240. — *Malthinus fasciatus* Ol. 244. — *Callianthia basalis* M. L. 228. — *Ichthyurus* sp. 246.

#### V. Trichodermata.

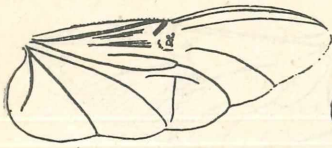
31. Melyridae: *Malachius* (*Malachiini*) *bipustulatus* L. 241. — *Dasytes* (*Dasytini*) *coeruleus* De G. 242. — *Melyrus abdominalis* 245. — *Danacaena* (*Danacaeini*) *pallipes* Panz. 243.

32. Corynetidae: *Corynetes coeruleus* De G. 271.

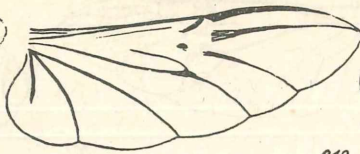
33. Cleridae: *Tillus* (*Tillini*) *elongatus* L. 272, 273. — *Opilo* (*Clerini*) *domesticum* L. 274. — *Clerus formicarius* L. 275. — *Trichodes apiarius* L. 276. — *crabroniformis*, 277. — *javarius* 278. — *Cladiscus laniger* Schnkl. 279. — *Natalis spinipennis* 289. — *Calendyma chiliensis*



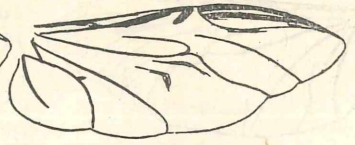




217



218



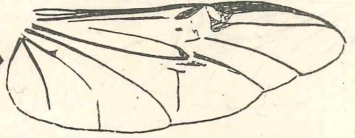
219



220



221



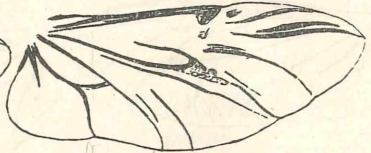
222



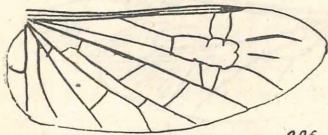
223



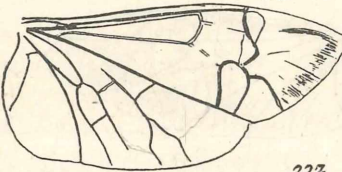
224



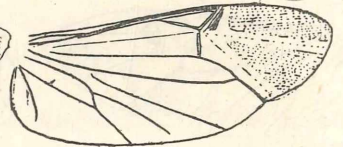
225



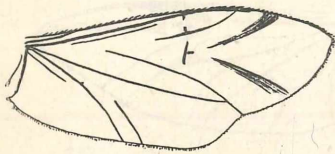
226



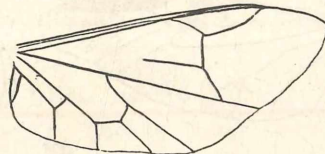
227



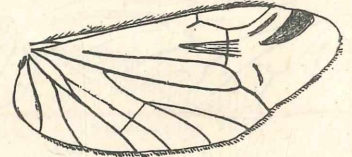
228



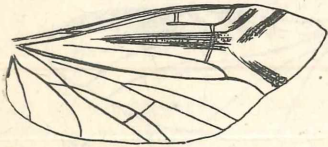
229



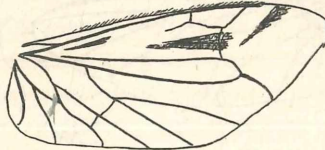
230



231



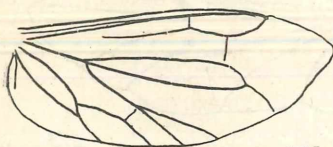
232



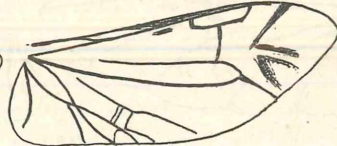
233



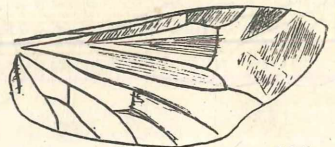
234



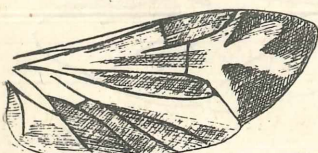
235



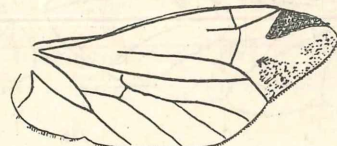
236



237



238

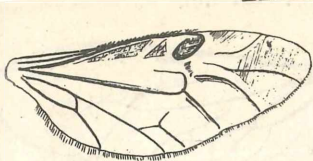


239

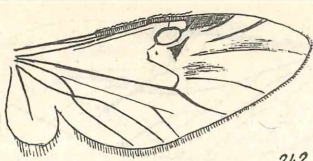


240

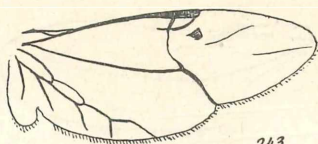




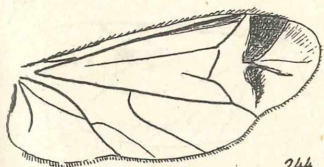
241



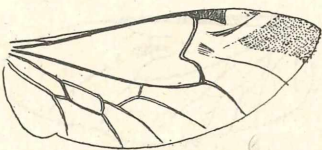
242



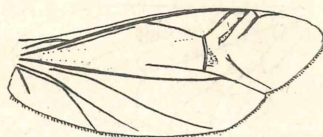
243



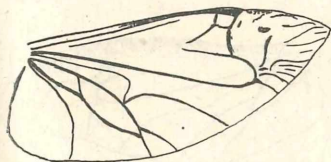
244



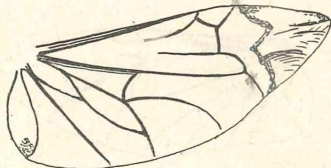
245



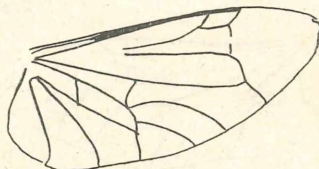
246



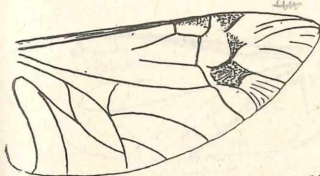
247



248



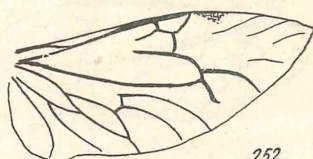
249



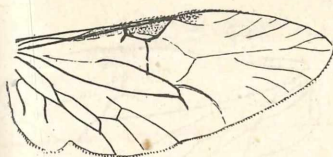
250



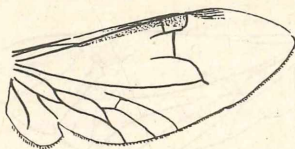
251



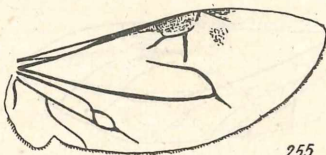
252



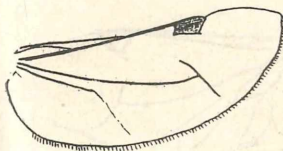
253



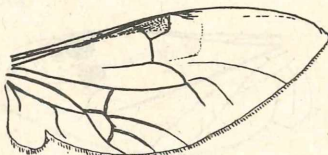
254



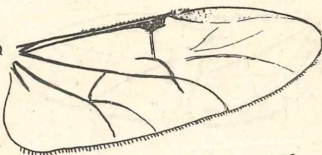
255



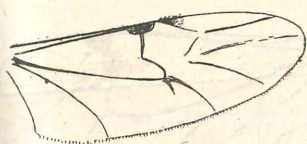
256



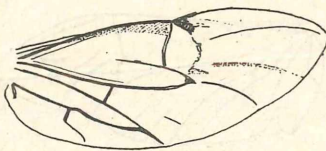
257



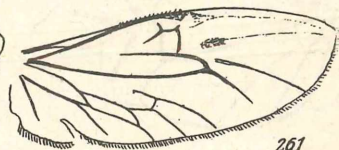
258



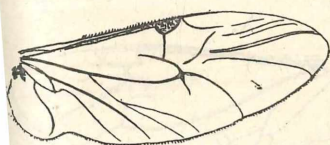
259



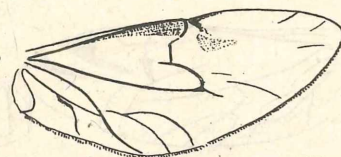
260



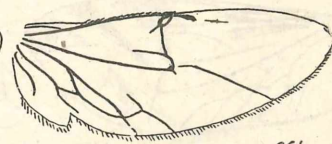
261



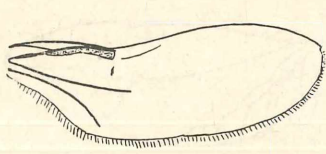
262



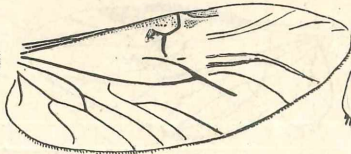
263



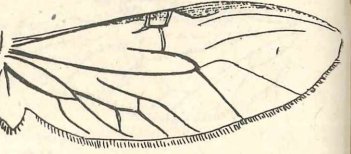
264



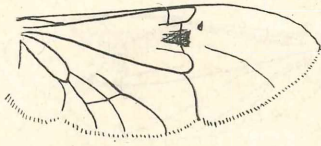
265



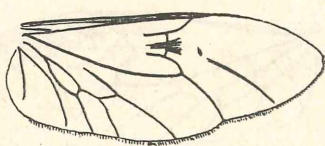
266



267



268



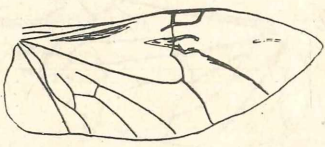
269



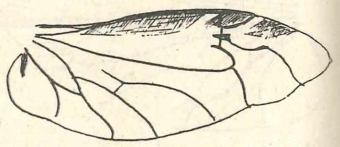
270



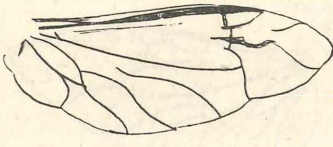
271



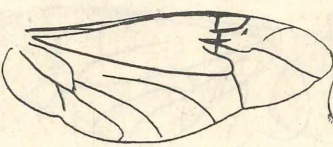
272



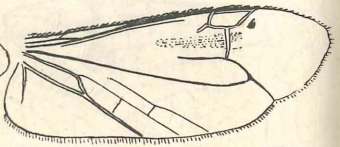
273



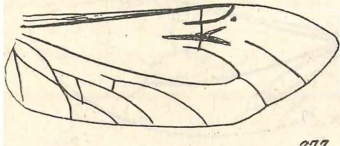
274



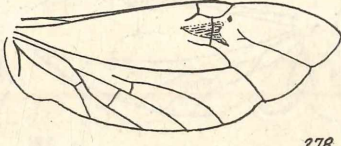
275



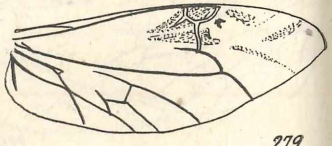
276



277



278

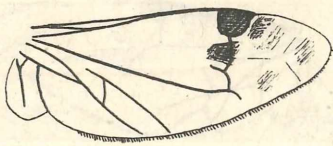


279

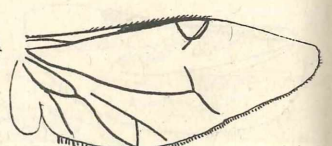


280

*Dasilochophora minor*



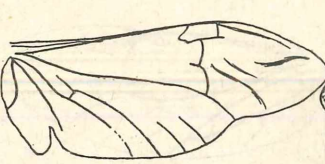
281



282



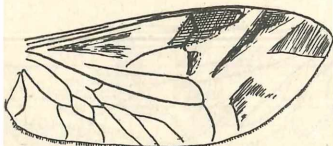
283



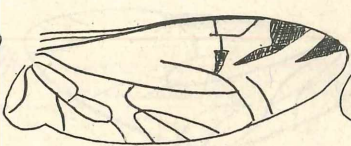
284



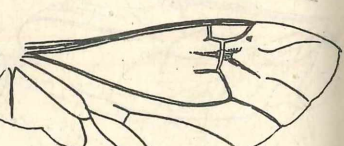
285



286

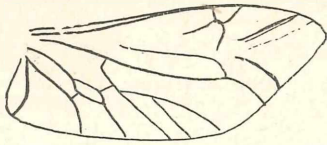


287

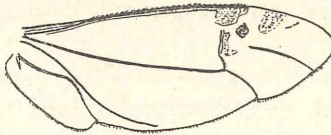


288

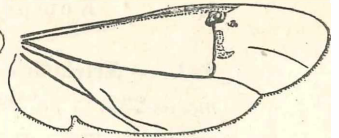




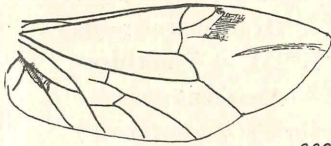
289



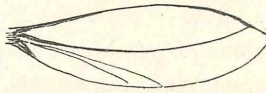
290



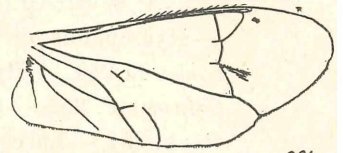
291



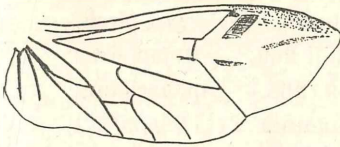
292



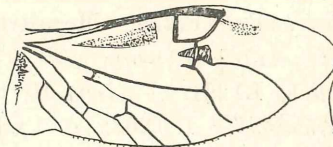
293



294



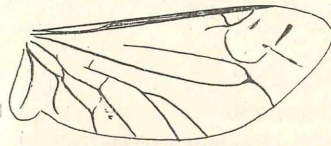
295



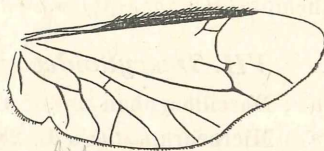
296



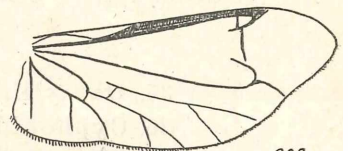
297



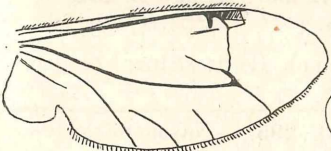
298



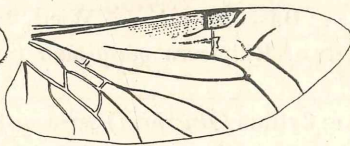
299



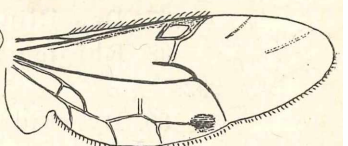
300



301

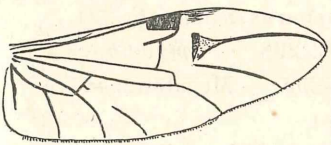


302

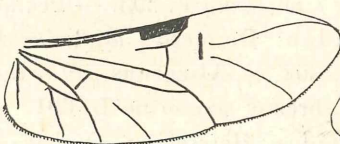


303

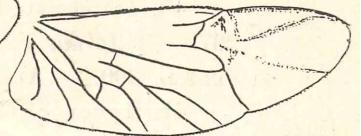
*Xiphyllus (Ertomidae) n. sp.*



304



305



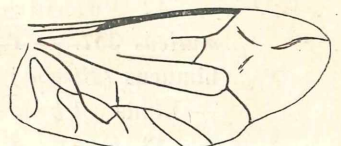
306



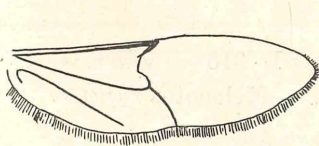
307



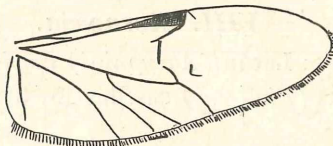
308



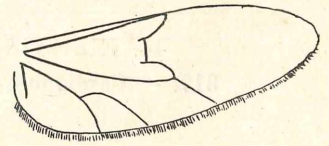
309



310



311



312

290. — *Trichodes (Clerini) nutalli* 291. — *Neohydнус* sp. oder *Callimerus* 293. — sp. 294. — *Callimerus pectoralis* Schnkl. 288. — *Ommadius seticornis* 285.

### VI. Palpicornia.

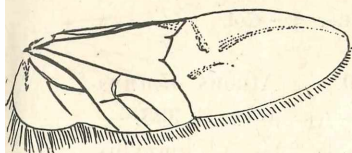
34. Hydrophilidae: *Sternolophus (Hydrophilini) rufipes* 247. — *Hydrophilus piceus* L. 248. — *pistaceus* L. 249. — *Hydrocharus caraboides* L. 250. — *Hydrobius (Hydrobiini) fuscipes* L. 251. — *Philhydrus testaceus* F. 252. — *Cymbiodyta marginella* F. 253. — *Anacaena globulus* Payk. 254. — *Laccobius minutus* L. 255. — *Chaetarthria (Chaetarthriini) seminulum* Payk. 256. — *Berosus (Berosini) luridus* L. 257. — *Cercyon (Sphaeridiini) haemorrhoidalis* F. 258. — *Megasternum boletophagum* Mrsh. 259. — *Spercheus (Spercheini) emarginatus* Schall 260. — *Helophorus (Helophorini) aquaticus* L. 261. — *griseus* Herbst. 267. — *Sphaeridium (Sphaeridiini) scarabaeoides* L. 262. — *Cyclonotum (Coelostomini) orbiculare* F. 263. — sp. 266. — *Hydrochus (Helophorini) carinatus* Germ. 264. — *Ochthebius (Hydraenini) marinus* Payk. 265.

### VII. Dascylloidea.

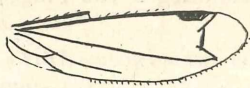
35. Dascyllidae: *Dascillocyphon minor* Everts 280.
36. Cyphonidae: *Microcara testacea* L. 281. — *Cyphon variabilis* Thunb. 282. — *Scirtes hemisphaericus* L. 283. — *Helodes minuta* L. 284.
37. Dascillidae: *Dascillus fulvulus* Wied. 286. — *cervinus* L. 287.
38. Rhipiceridae: *Rhipicera marginata* (nach Redtenbacher) 292.
39. Byrrhidae: *Cytilus (Byrrhini) sericeus* F. 295. — *Nosodendron (Nosodendrini) fasciculare* Oliv. 296. — *Byrrhus (Byrrhini) pilula* L. 292. — *Simplocaria semistriata* F. 293. — *Pedilophorus aeneus* F. 294.
40. Dermestidae: *Dermestes lardarius* L. 298. — *peruvianus* 297. — *vulpinus* F. 302. — *Attagenus pellio* L. 299. — *Megatoma undata* L. 300. — *Anthrenus museorum* L. 301.
41. Heteroceridae: *Heterocerus obsoletus* Curt. 304. — *flexuosus*. Steph. 305.
42. Parnidae: *Potamophilus (Parnini) acuminatus* F. 306. — *muticus* 307. — *Parnus luridus* Er. 308. — *prolificicornis* F. 309. — *Limneus (Elmini) dargelasi* Latr. 310. — *Lareynea aeneus* Müll. 311. — *Elmis volckmari* Panz. 312. — *Cyloepus montanus* 313.
43. Georyssidae: *Georyssus crenulatus* Ross. 314, 315.

### VIII. Sternoxia.

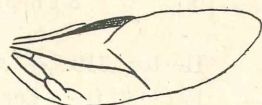
44. Elateridae: *Lacon (Agrypnini) murinus* L. 316 — *vinensis* 317. — *Cardiophorus (Elaterini) assellus* Er. 318. — *Melanotus rufipes*



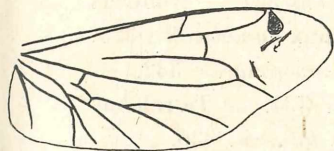
313



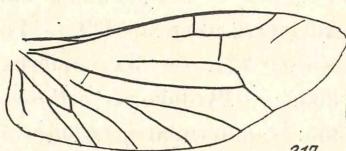
314



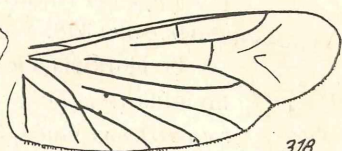
315



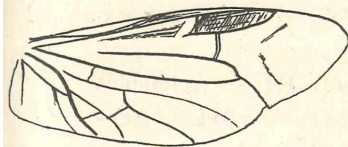
316



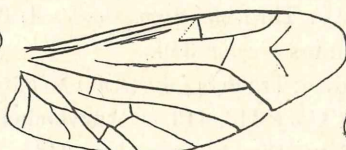
317



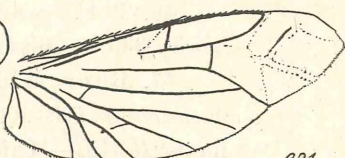
318



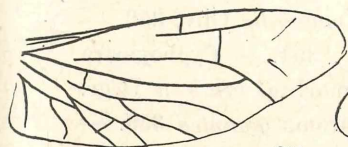
319



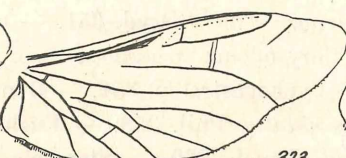
320



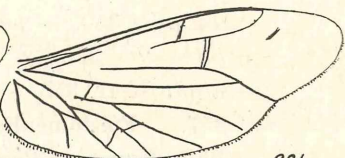
321



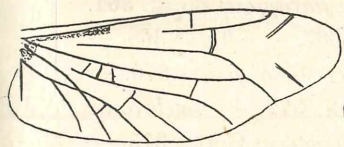
322



323



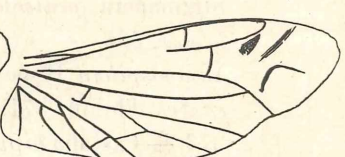
324



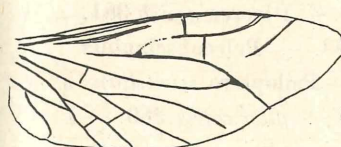
325



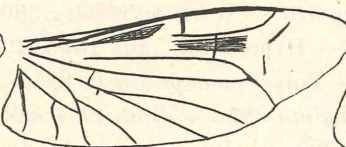
326



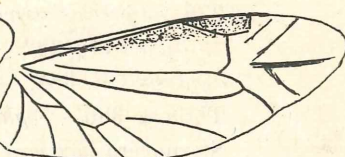
327



328



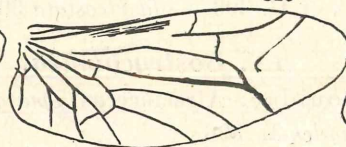
329



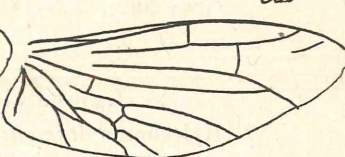
330



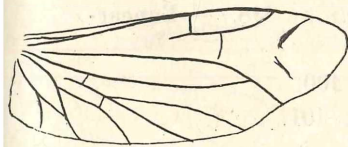
331



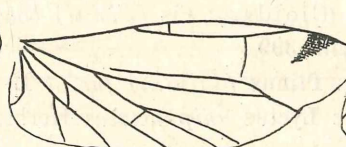
332



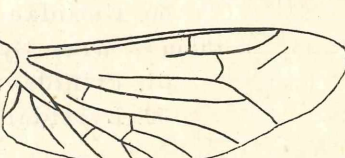
333



334



335



336



Herbst 319. — *Limonium aeruginosus* Oliv. 320. — *Athous alpinus* Redt. 321. — *Corymbites purpureus* Poda 322. — *tessellatus* L. 323. — *Dolopius marginatus* L. 324. — *Agriotes obscurus* L. 325. — *Campylus (Campylini) linearis* L. 326. — *Diploconus prominens* 327. — *Allotrius quadricollis* 328. — *Adelocera punctata* 329. — *Fornax humidicollis* 329. — *Crebiorkipis elongatus* 331. — *Oxynopterus mucronatus* 332. — *Smiotus imperialis* 333. — *Pyrophorus pelluscens* 334. — *Tetralobus rotundifrons* Guér. 335. — *Corymbites (Elaterini) latus* F. 336.

45 Eucnemidae: *Melasis (Melasini) buprestoides* L. 337.

46. Throscidae: *Throscus dermestoides* L. 338. — *Drapetes equestris* F. 339. — *Lissomus bicolor* 340.

47. Buprestidae: *Trachys (Agrilini) minuta* L. 341. — *Aetenodes westermanni* Cast. et Gory 342, 343. — *Ancylocheira rustica* 344. — *Agelia peteli* 345. — *Catoxantha opulenta* Gory 346. — *Chalcophora mariana* 347. — *Chrysapis aurata* F. 348. — *Chrysochroa kerremanni* 349. — *edwardsi* 350. — *purpureiventris* Dryd. 351. — *mutabilis* Oliv. 352. — *fulminans* 353. — *Chrysoedema granulosa* Kerr. 354. — *Cyphogastra nitida* Kerr. 355. — *Cyphogastra* sp. 356. — *Demochroa gratiosa* Degr. 357. — *Epistomentis vittatus* Phil. 358. — *Euchroma gigantea* 359. — *Philoceanus maitlandi* Lansb. 360. — *Steraspis speciosa* Klug 361. — *Stigmodera spinicola* Gory 362. — *cruca* S. 363. — *flavopicia* Boisd. 364. *lebasii* 365. — *sieboldi* C. et G. 366. — *variabilis* 367. — *vittatus* 368. — *xanthospilota* Hope 369. — *Agrilus (Agrilini) coeruleus* Rossi 370. — *acutus* Thunb. 371. — *Capnodis anthracina* Fisch. 372. — *tenebrionis* 373. — *Castalia bipustulata* L. 374. — *Cisseis chalcopertus* Germ. 375. — *leucosticta* 376. — *Chrysobothris* sp. 377. — *Conognatha amoena* Kirby 378. — *pretiosissima* 379. — *principalis* Klug 380. — *Dicerea acnea* 381. — *divaricata* 382. — *Hyperantha sallii* Rojas 383. — *Pelecopselaphus depressus* F. 384. — *Polycesta depressa* L. 385. — *Psiloptera scintillans* Thomas 386. — *plagiata* 387. — *dilatocollis* 388. — *plagiicollis* 389. — *Sternocera luctifera* 390. — *Julodes gariepina* Péring. 391. — *humeralis* Gory 392. — *iris* C. et G. 393. — *laevicostata* 394.

### IX. Bostrychoidea.

48. Lymexylonidae: *Atractocerus emarginata* Cast. 395. — *Hylecoetus dermestoides* L. 396.

49. Sphindidae: *Sphindus hispidus* Payk. 397.

50. Cissidae (Cioidae): *Cis (Cisini) boleti* F. 398. — *Ennearthron cornutum* Gylh. 399.

51. Ptinidae: *Ptinus (Ptinini) fur.* ♂ L. 400.

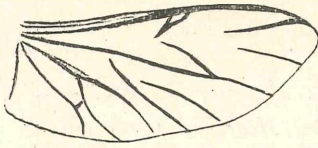
52. Lyctidae: *Lyctus unipunctatus* Herbst 401.



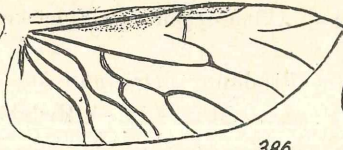




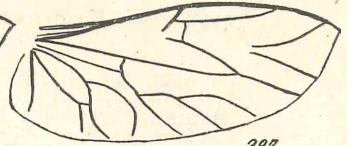




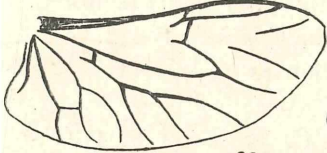
385



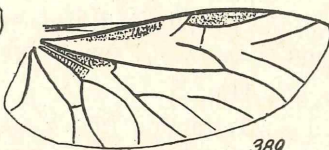
386



387



388



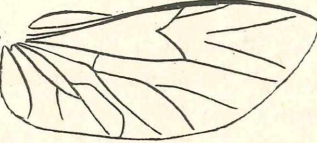
389



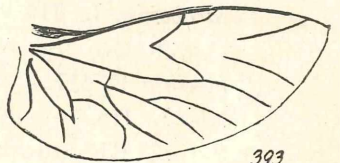
390



391



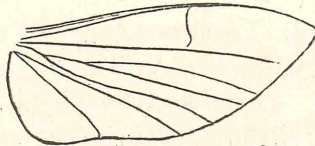
392



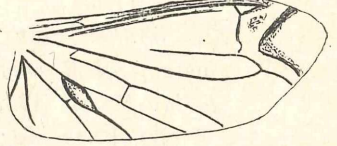
393



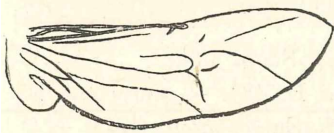
394



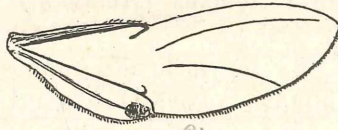
395



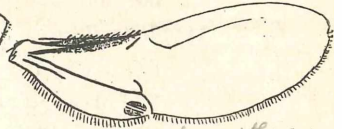
396



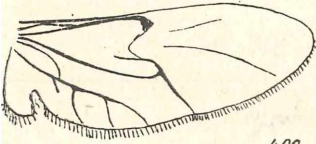
397



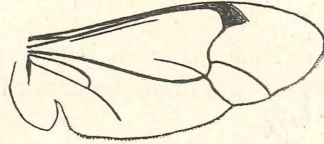
398



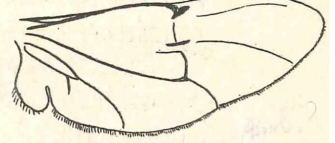
399



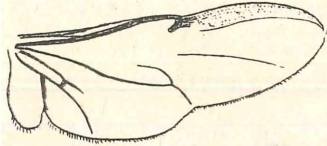
400



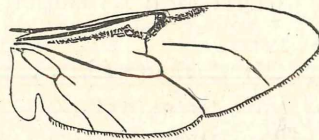
401



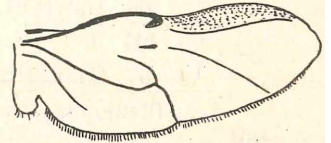
402



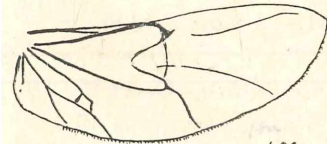
403



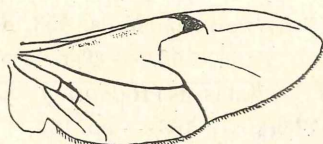
404



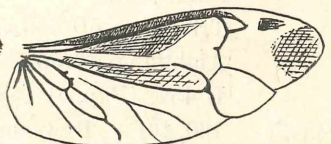
405



406



407



408

53. Anobiidae: **Priobium** (*Dryophilini*) *castaneum* F. 402. — **Oehina** (*Xyletinini*) *hederae* Müll. 403. — **Hedobia** (*Hedobiini*) *imperialis* L. 404. — **Coenocara** (*Dorcatomini*) *bovistae* Hoffm. 405. — **Ptilinus** (*Xyletinini*) *pectinicornis* L. 406. — **Ernobius** (*Anobiini*) *mollis* L. 407.

54. Bostrychidae (Apatidae): **Rhizopertha** *dominica* F. 412. — **Apate** *capucinus* L. 408. — *terebrans* 409. — **Xylotrips** *flavipes* 444. — **Heterobostrychus** *aequalis* 411.

55. Melandryidae: **Tetratoma** (*Tetratomini*) *fungorum* F. 413. — **Orchesia** (*Orchesiini*) *picea* Herbst 414. — **Melandrya** (*Melandryini*) *caraboides* L. 415.

56. Mordellidae: **Mordella** (*Mordellini*) *10-guttata* 416. — *fasciata* F. 417. — **Anaspis** (*Anaspini*) *maculata* Fourc. 419. — *frontalis* L. 418. — *pulicaria* Costa 420.

57. Rhipidophoridae: **Emenadia** *flabellata* (nach Redtenbacher) 421.

58. Oedemeridae: **Asclera** (*Asclerini*) *coerulea* L. 422. — **Oedemera** (*Oedemerini*) *podagrariae* L. 423. — *nobilis* Scop. 424, 427. — *lurida* Marsh. 425. — **Nacertes** (*Nacerdini*) *melanura* L. 426.

59. Pythidae: **Pytho** (*Pythini*) *depressus* L. 430. — **Rhinosimus** (*Salpingini*) *planirostris* F. 428. — **Salpingus** *castaneus* Panz. 429.

60. Anthicidae: **Notoxus** (*Anthicini*) *monoceros* L. 431. — **Anthicus** *floralis* L. 432.

61. Pyrochroidae: **Pyrochroa** *serraticornis* Scop. 433.

62. Meloidae: **Lytta** (*Lyttini*) *vesicatoria* L. 434. — **Cerocoma** *schaefferi* L. 435. — **Epicauta** *ruficeps* 436. — **Horia** *cephalotes* 437. — **Zonabris** Sp. 438. — **Oenas** *afes* L. 441. — **Cissites** *testaceus* 439. — **Zonabris** *interrupta* Ol. 440.

63. Nilionidae: **Nilio** sp. (nach Redtenbacher) 442.

64. Trictenotomidae: **Trictenotoma** *childreni* (nach Redtenbacher) 443.

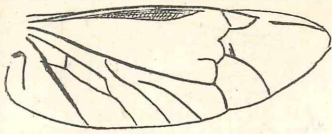
65. Othniidae: **Othnius** *delusus* Pasc. 410.

66. Lagriidae: **Lagria** *hirta* L. 445. — *albohirta* Wied. 446. — sp. 447.

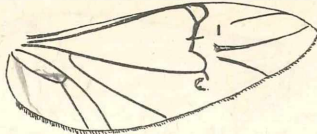
67. Cistelidae: **Mycetochares** (*Mecetocharini*) *linearis* Ill. 448. — **Cteniopus** (*Omophilini*) *flavus* Scop. 449.

68. Tenebrionidae: **Opatrum** (*Opatrini*) *sabulosum* L. 450. — **Microsom** *tibiale* F. 451. — **Diaperinus** (*Diaperini*) *boleti* L. 452. — **Tribolium** (*Ulolomini*) *ferrugineum* Muls. 453, 454. — **Uloma** sp. 455. — **Alphitobius** *diaperinus* Panz. 456. — **Tenebrio** (*Tenebrionini*) *molitor* L. 457, (Puppe), 458. — **Nalassus** (*Helopini*) *laevioctostriatus* Goeze 459, 460, 461. — **Dictyssus** *longicus* 463. — sp. 462. — **Scotaeus** *pretiosus* 464.

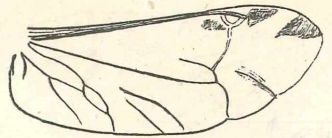




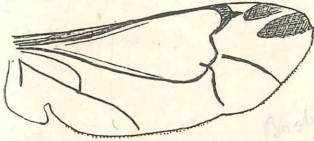
409



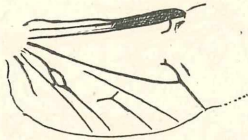
410



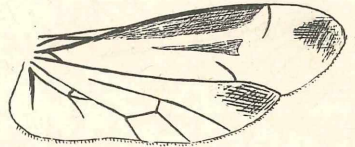
411



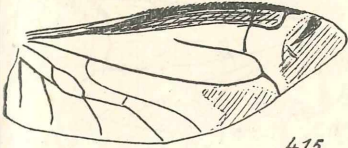
412



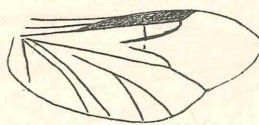
413



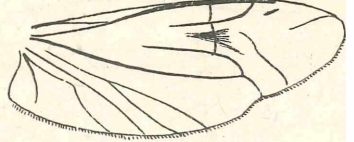
414



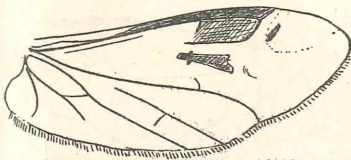
415



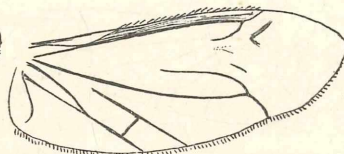
416



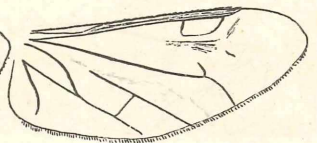
417



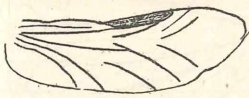
418



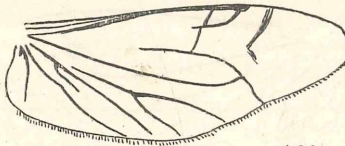
419



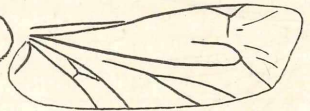
420



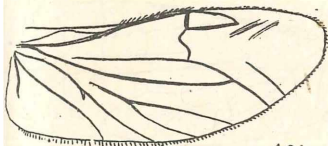
421



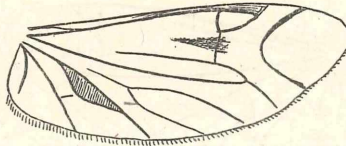
422



423



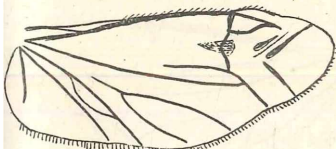
424



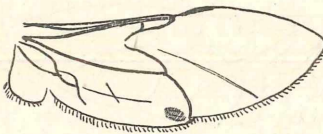
425



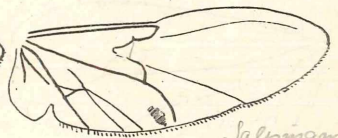
426



427



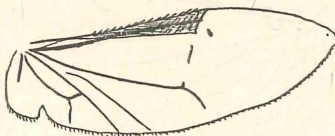
428



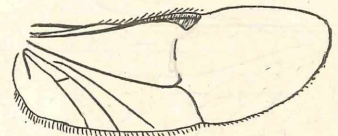
*Salpingus*  
429



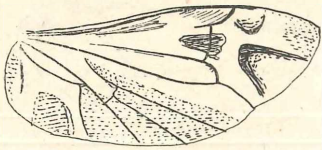
*Pytho*  
430



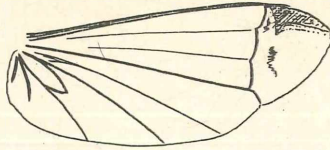
431



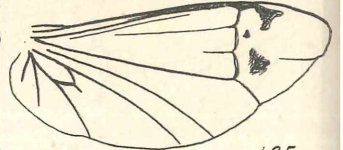
432



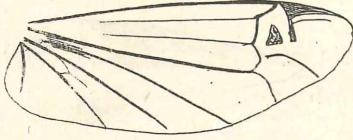
433



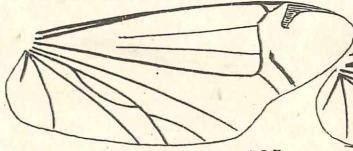
434



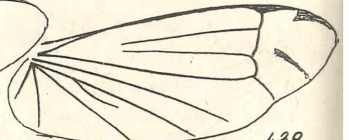
435



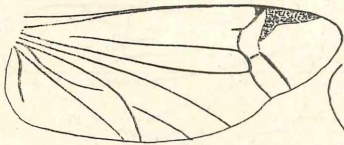
436



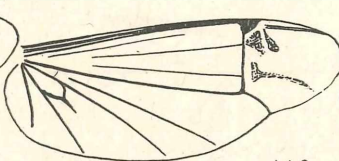
437



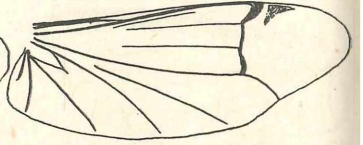
438



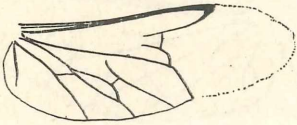
439



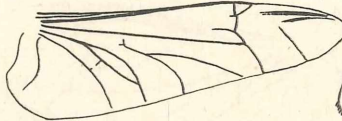
440



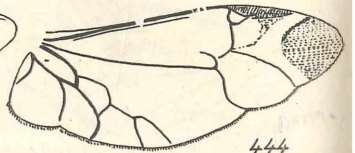
441



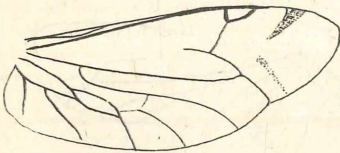
442



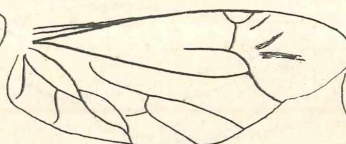
443



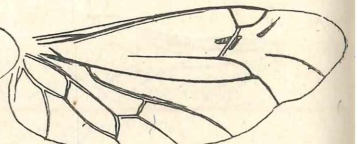
444



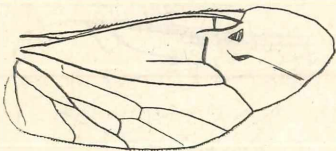
445



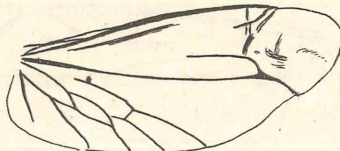
446



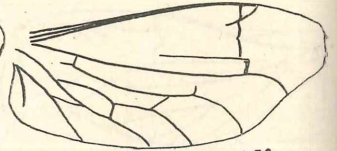
447



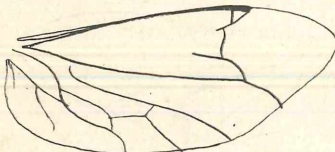
448



449



450



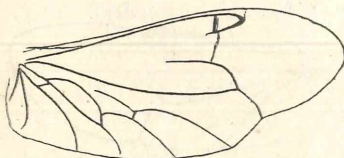
451



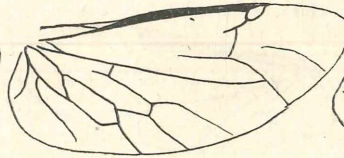
452



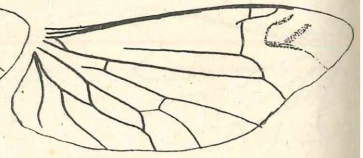
453



454

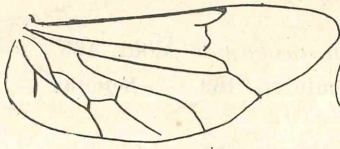


455

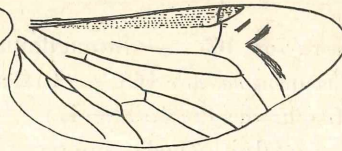


456

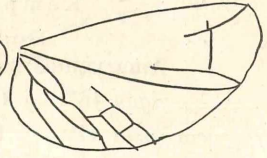




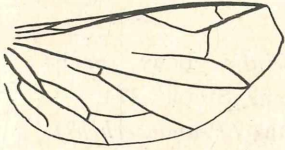
457



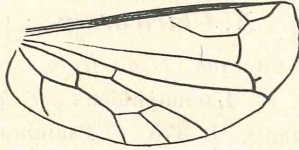
458



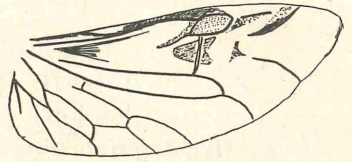
459



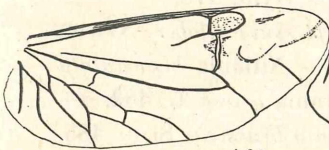
460



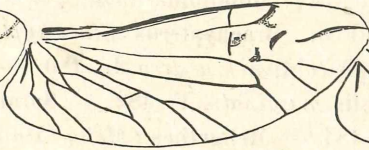
461



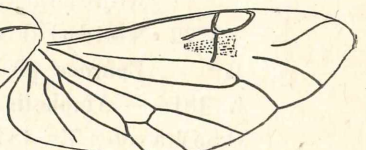
462



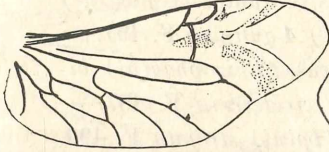
463



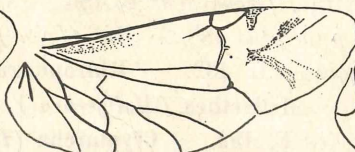
464



465



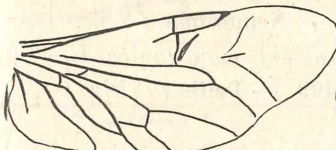
466



467



468



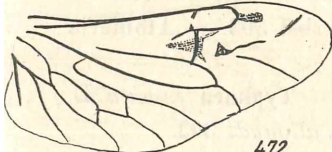
469



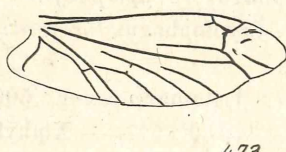
470



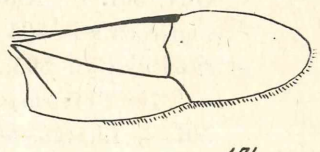
471



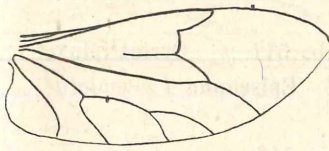
472



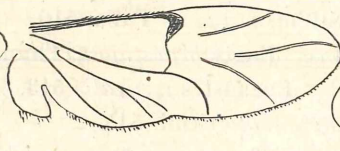
473



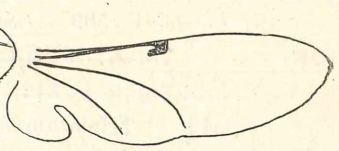
474



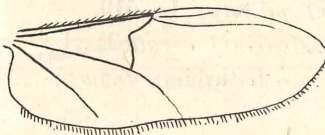
475



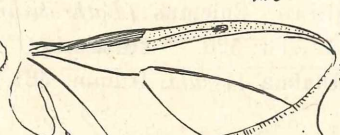
476



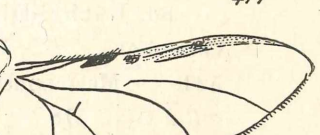
477



478



479



480

— *Amarygmus cuprarius* 465. — *Strongilium ambiginum* Möhl. 466.  
 — *gigas* 467. — *Ceropria induta* 468. — *Toxieum* sp. 469. — *Setenus coracina* 470. — *Liochrodes discoidalis* 471.

69. Rhysopaussidae: *Ziaelas insolutus* Fairm. 472.

### X. *Clavicornia*.

70. Cucujidae: *Cucujus (Cucujini) imperialis* Lew. (nach Redtenbacher) 473. — *Laemophloeus ferrugineus* Steph. 474. — *Hyllota (Hyllotini) planatus* L. 475. — *Psammoechus (Psammoechini) bipunctatus* F. 476. — *Silvanus (Silvanini) unidentatus* F. 477.

71. Monotomidae: *Monotoma angusticollis* Gylh. 478.

72. Nitidulidae: *Brachypterus (Brachypterini) glaber* Newm. 479. — *Epuraca (Nitidulini) aestiva* L. 480. — *Nitidula bipustulata* L. 481. — *Amphotis marginalis* F. 482. — *Soronia grisea* L. 483. — *Omosita colon* Er. 484. — *Meligethes (Meligethini) brassicae* Scop. 485. — *Pocadius (Pocadiini) ferrugineus* F. 486. — *Cychramus (Cylloidiini) luteus* F. 489. — *4-punctatus* 488. — *Ips (Ipini) 4-guttatus* F. 491. — *Pithyophagus ferrugineus* L. 492. — *Rhizophagus (Rhizophagini) bipustulatus* F. 493. — *Meligethes (Meligethini) viridescens* F. 487. — *Idaethina meligethoides* F. 494. — *Cryptarcha (Ipini) strigata* F. 490.

73. Byturidae: *Byturus fumatus* F. 495.

74. Trogositidae: *Alindria granāis* 496. — *Nemosoma (Nemosomini) elongata* L. 497. — *Trogosita (Trogositini) mauritanica* L. 498. — *Tenebrioides pini* (nach Burmeister) 499. — *Peltis (Peltini) ferrugineum* L. 500.

75. Cryptophagidae: *Telmatophilus (Telmatophilini) caricis* Oliv. 501. — *Anthophagus (Cryptophagini) silaceus* Herbst 502. — *nigricornis* F. 504. — *Cryptophagus lycoperdi* Herbst 503. — *Atomaria fuscipes* Gyll. 505.

76. Tritomidae: *Tritoma picea* F. 506. — *Typhaea fumata* L. 507. — *Litargus bifasciatus* F. 517. — *Xiphyllus alluaudi* 303.

77. Phalacridae: *Phalacerus corruscus* Panz. 508. — *Olibrus bicolor* F. 509. — *Stilbus testaceus* Panz. 510.

78. Erotylidae: *Engis bipustulata* Thunb. 511. — *Cyrtotriplax bipustulata* F. 512. — *Encaustes verticalis* 513. — *Episcapha 4 maculata* 514. — *Triplatomia attenuata* Crull. 515.

79. Languriidae: *Tetralanguria elongata* F. 516.

80. Lathridiidae: *Eniemus (Lathridiini) minutus* L. 519. — *Cononimus nodifer* Westw. 520. — *Corticaria (Corticarini) serrata* Payk. 522. — *Melanophthalma fuscula* Humm. 521. — *Lathridius angusticollis* Gyll. 518.

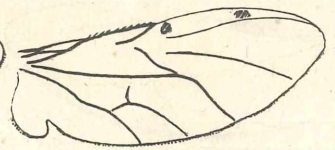




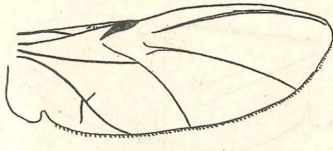
481



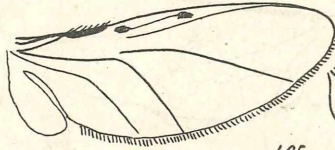
482



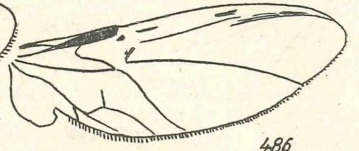
483



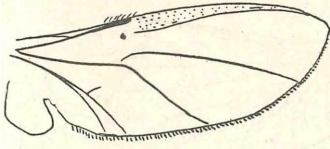
484



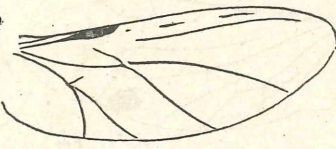
485



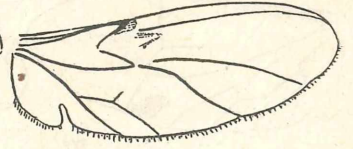
486



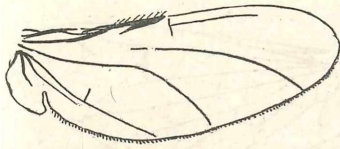
487



488



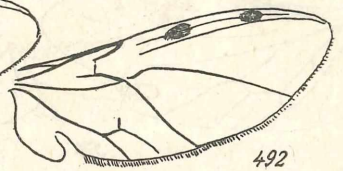
489



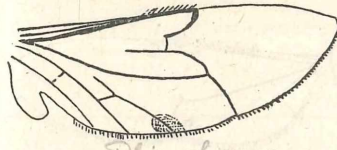
490



491

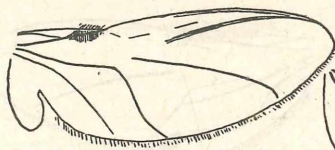


492

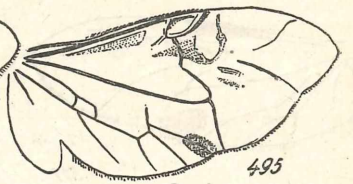


*Rhizophagus*

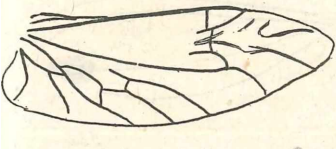
493



494



495



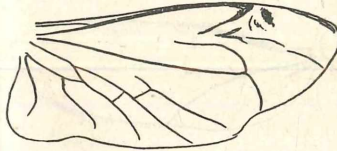
496 *Tappin*



497



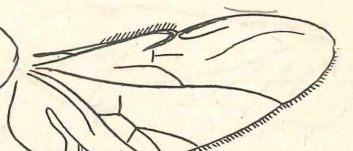
498



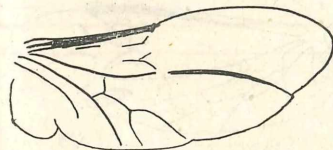
499



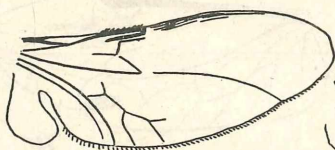
500



501



502

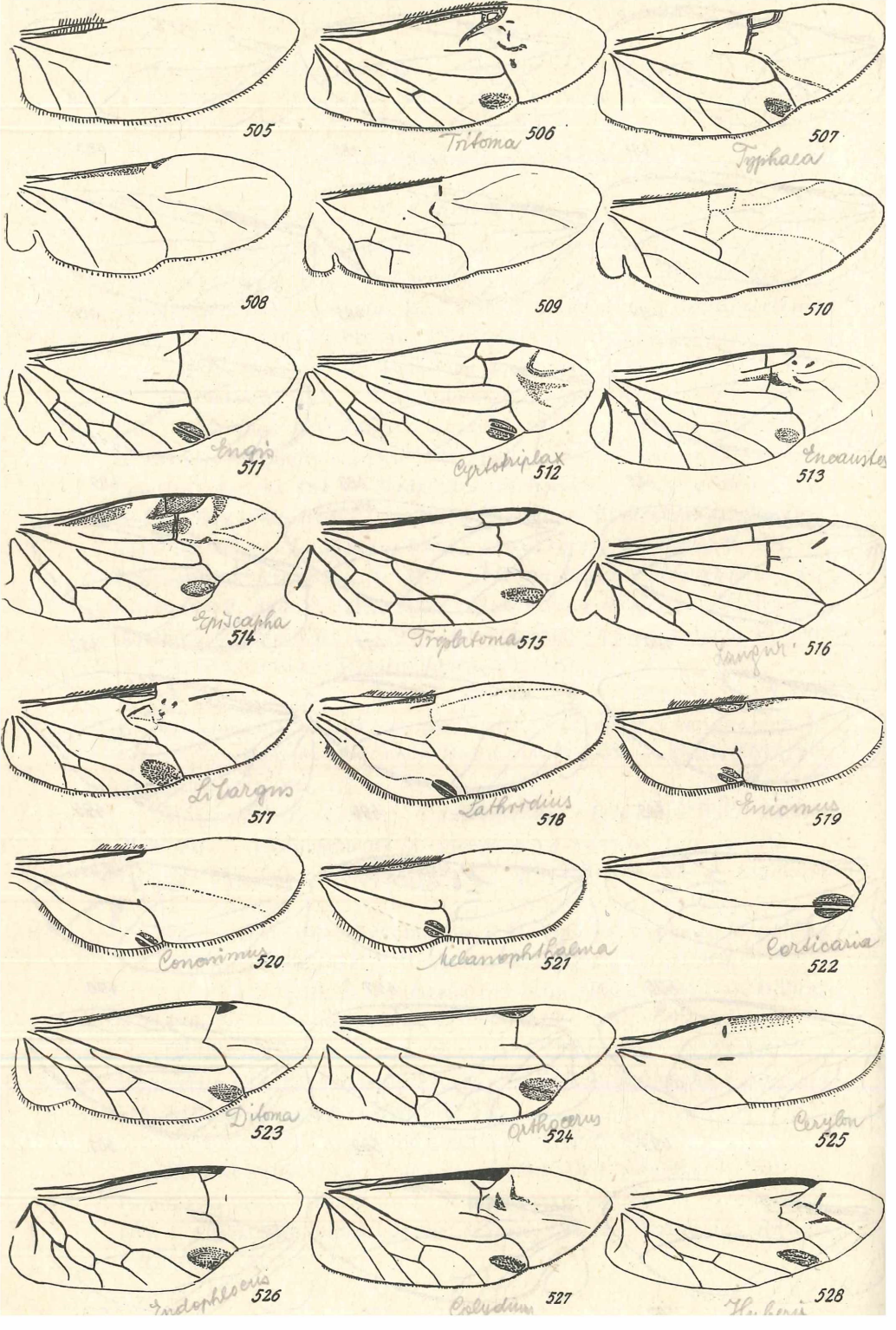


503

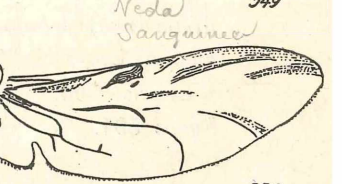
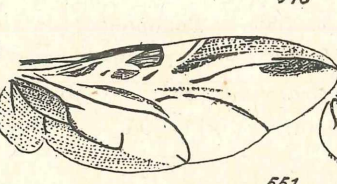
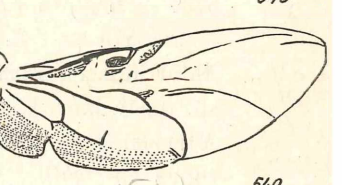
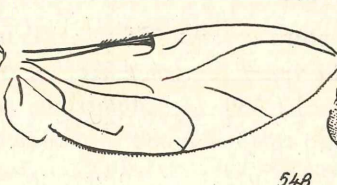
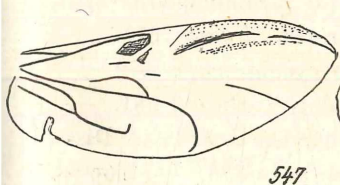
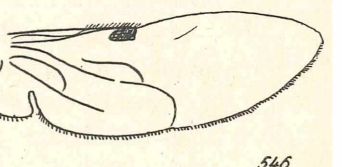
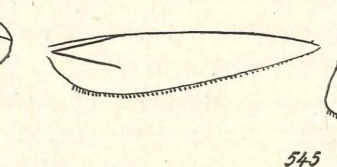
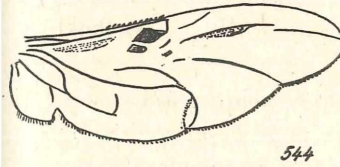
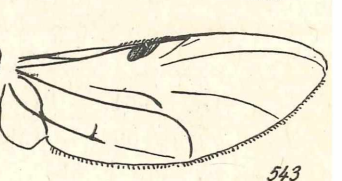
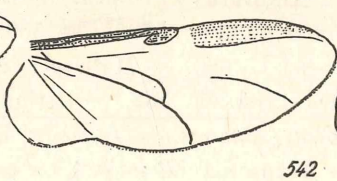
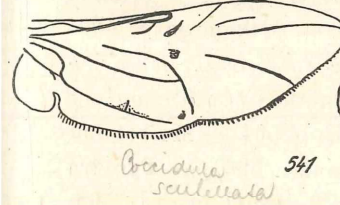
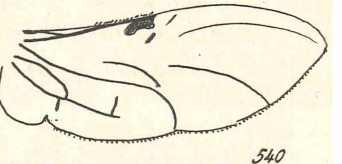
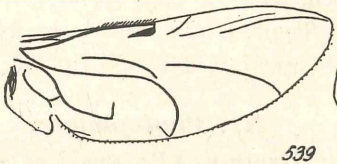
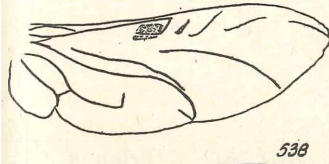
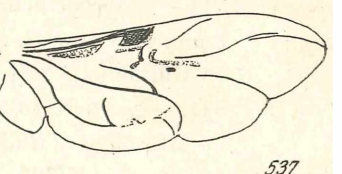
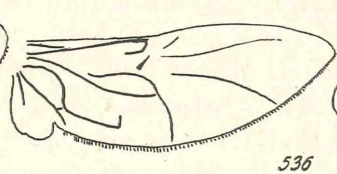
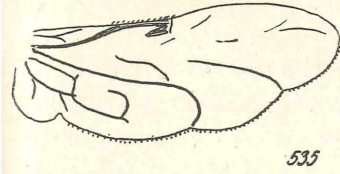
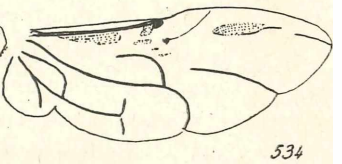
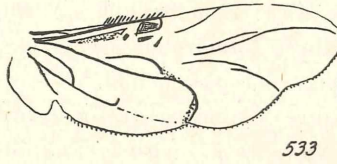
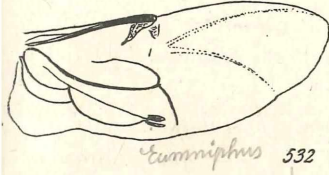
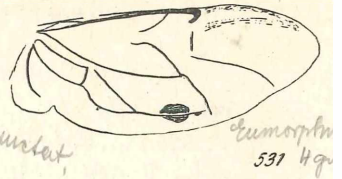
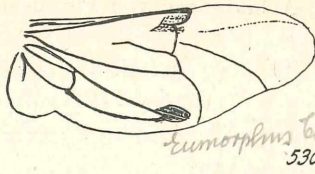


504

*Bythurus*







81. Colydiidae: *Ditoma* (*Synchitini*) *crenata* F. 523. — *Orthocerus* (*Orthocerini*) *muticus* L. 524. — *Cerylon* (*Cerylonini*) *histeroides* F. 525. — *Endophloeus spinulosus* 526. — *Colydium* (*Colydiini*) *fili-forme* F. 528. — *Hyberis* sp. 527.

82. Endomychidae: *Endomychus* sp. 529.

83. Eumorphidae: *Eumorphus bipunctatus* Perty 530. — *4-guttatus* 531. — *Eumniphus marginatus* 532.

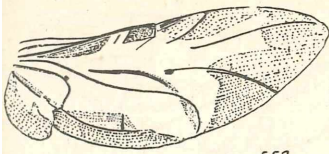
84. Coccinellidae: *Chilocorus* (*Chilocorini*) *renipustulatus* Scriba 533. — *Epilachna* (*Epilachnini*) *pusillanima* 534, 535. — *argus* Fourc 544. — *Subcoccinella 24-punctata* L. 536, 548. — *Coccinella* (*Coccinellini*) *7-punctata* L. 537. — *hieroglyphica* L. 538. — *oblongopunctata* L. 539. — *Rhisobius* (*Rhisobiini*) *litura* F. 540. — *Coccidula scutellata* Herbst 541. — *rufa* Herbst 542. — *Scymnus* (*Scymnini*) *nigrinus* Kugel 543. — *Rhisobius* (*Rhisobiini*) *chrysoloides* Herbst 545. — *Anisosticta* (*Coccinellini*) *19-punctata* L. 547. — *Exochomus* (*Chilocorini*) *flavipes* Thunb. 552. — *Coccinella* (*Coccinellini*) *22-punctata* L. 551. — *variabilis* Herbst 550. — *Scymnus* (*Scymnini*) *brunneus* 546. — *Neda sanguinea* 549. — *Exochomus* (*Chilocorini*) sp. 553.

### XI. Phytophaga.

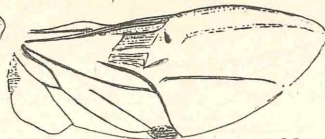
85. Prionidae: *Xixuthrus* (*Prionini*) *microcerus* 556. — *Prionus coriarius* L. 557. — *laticollis* Drury 558. — sp. 559. — *Orthomegas* (*Callipogonini*) *cinnamomeus* L. 560. — *Mallospis* (*Derancistrini*) *leucaspis* Guér. 561. — *Pyrodes nitidus* F. 562. — *Cyrtognathus* (*Callipogonini*) *buqueti* 563. — *Mallodon* (*Macrotomini*) *downesi* Hope 564. — *Macrotoma palmata* F. 565. — *Aegosoma* (*Prionini*) *marginale* 566. — *Pyrodes* (*Derancistrini*) *speciosus* Oliv. 567. — *Ergates* (*Prionini*) *faber* L. 568. — *Aulacopus natalensis* 569. — *Lophostermus indicus* 570. — *Orthosomus* (*Callipogonini*) *brunneus* 571.

86. Cerambycidae: *Rhagium* (*Lepturini*) *mordax* 571a. — *inquisitor* Fourc. 572. — *Spondylis* (*Spondylini*) *buprestoides* L. 573. — *Leptura* (*Lepturini*) *fulva* De G. 574. — *Grammoptera ruficornis* 575. — *Leptura armata* 576. — *Gaurotes virginea* 577. — *Notorrhina* (*Cerambycinae*) *muricata* 578. — *Necydalis major* 579. — sp. (nach Handlirsch) 580. — *Molorehus panzeri* Harold 581. — *Acmocera* (*Lamiinae*) *compressa* 582. — *undulata* Qued. 583. — *Discopus spectabilis* Bates 584. — *Cotops leucostictica* 585. — *Liopus* (*Lamiinae*) *nebulosus* 586. — *Pogonochaerus hispidus* 587. — *Batocera albofasciata* Dej. 588, 602. — *Carneades championi* 589. — *Cereopsius niassicus* 590. — *praetorius* 591. — *Oncoderes* sp. 592. — *Glenea hygia* 594. — *Spenura camilla* 595. — *Nitocris* sp. 596. — *Epicedia*

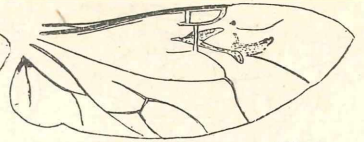




553



554

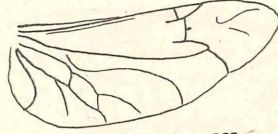


555

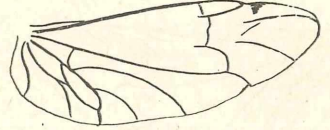
*Amphix tarsator* (Endsm.)



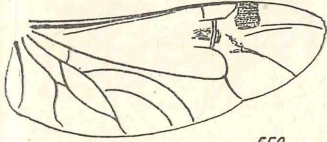
556



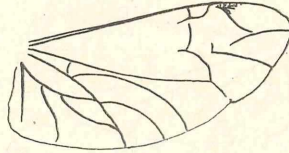
557



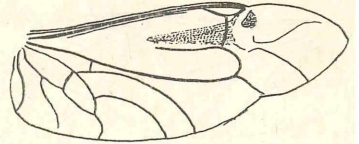
558



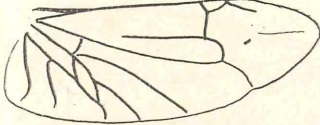
559



560



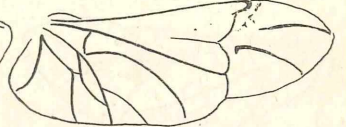
561



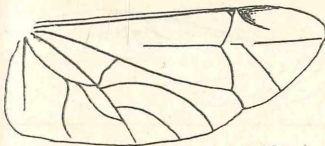
562



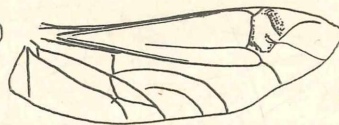
563



564



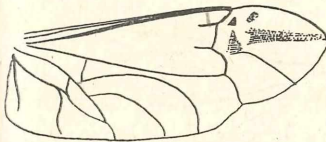
565



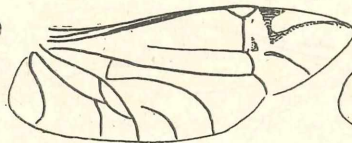
566



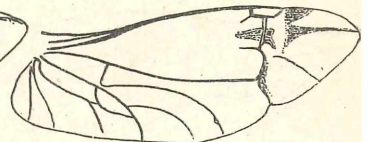
567



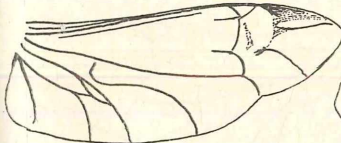
568



569



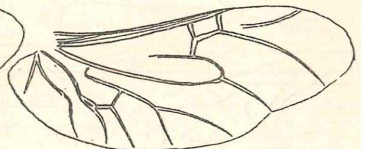
570



571



571



572



573

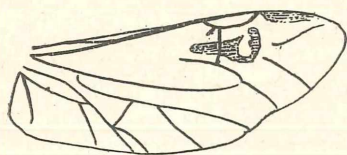


574

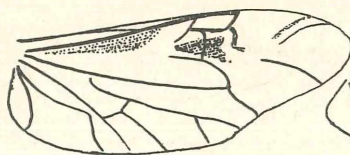


575

*Spondylis tanyptoides*



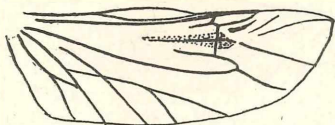
576



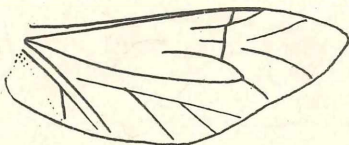
577



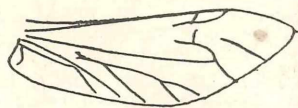
578



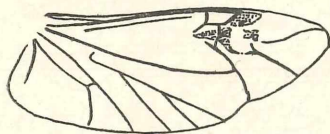
579



580



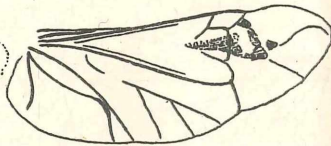
581



582



583



584



585



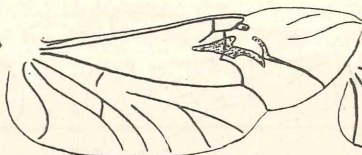
586



587



588



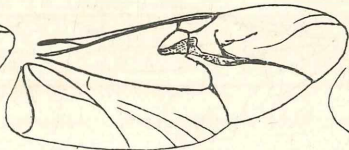
589



590



591



592



593



594



595



596



597

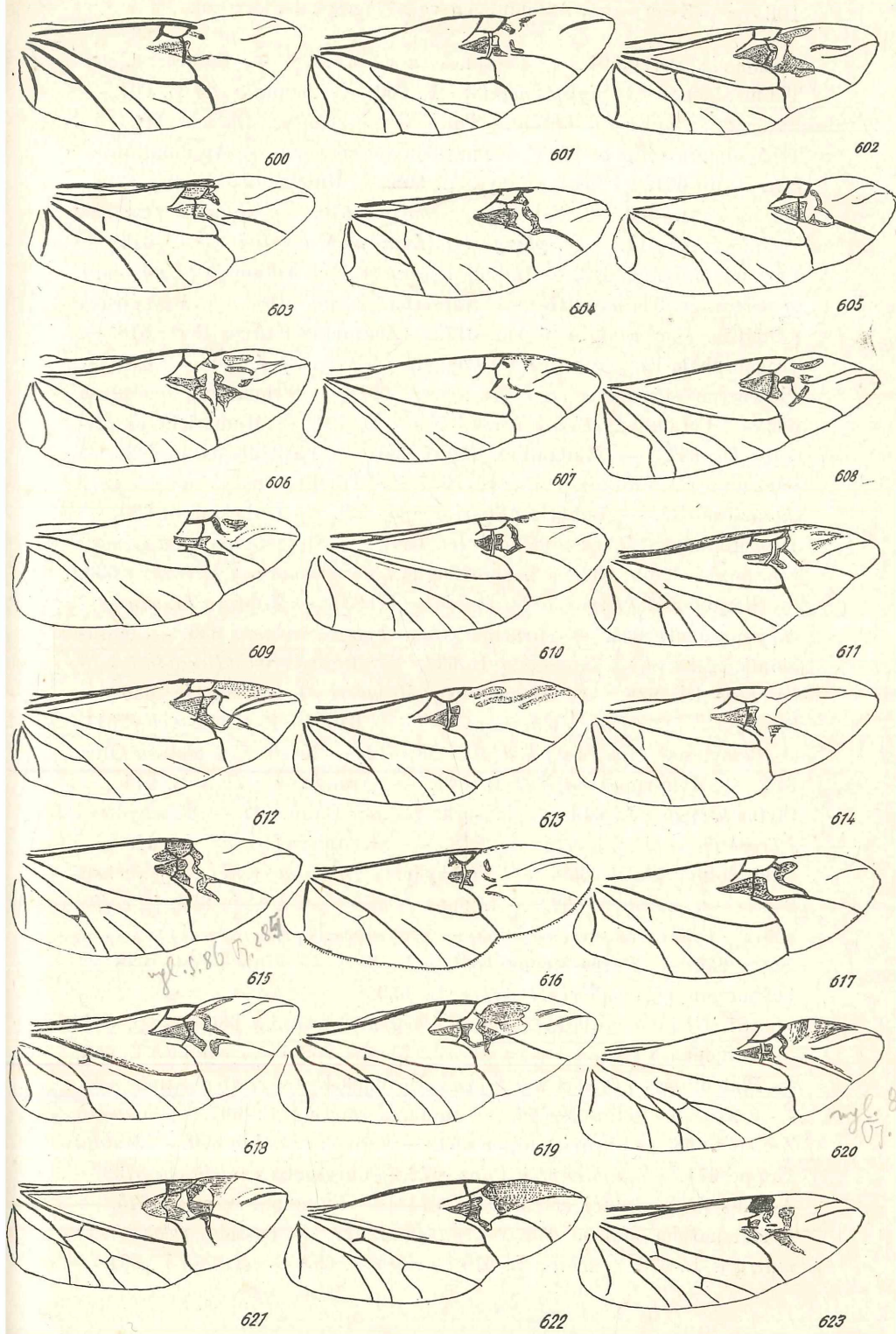


598



599

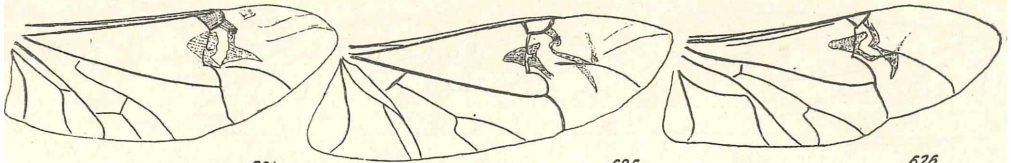




*maculatrix* Perty 597. — *Ceroplesis aestuans* 598. — *Batocera Hector* Thoms. 599. — *Ceroplesis aethiops* F. 600. — *Lamia textor* L. 601. — *Batocera albofasciata* 602. — *Tmesisternus politus* Blanch. 603. — *Trigonoptera spilonota* 605. — *Phryneta spinator* 606. — *Apriona flavescens* Kaup 607. — *Neocerambyx* sp. 608. — *Gnoma (Lamiinae) longitarsus* Pasc. 609. — *Saperda carcharias* 610. — *Gerania (Cerambycini) bosci* 611. — *Sphingnotis (Lamiinae) albertisi* Gest. 612. — *Phryneta spinator* 613. — *Inesida leprosa* 614. — *Volumnia (Lamiinae) westermanni* Thoms. 615. — *Nupserha fricator* 616. — *Dryoctenes (Lamiinae) scrupulosus* Germ. 617. — *Zographus aulicus* Bert. 618. — *Tragocephala variegata* 619. — *Pachyta (Lepturini) 4-maculata* 620. — *Plocederus (Cerambycinae) bennigseni* 621. — *Stromatium barbatum* 622. — *Cerambyx (Cerambycini) cerdo* L. 623. — *Hamaticherus plicatus* Ol. 624. — *Mallambyx raddei* 625. — *Pachydissus* sp. 626. — *Ceresium (Callidiopini) flavipes* 627. — *Trachyderus (Trachyderini) thoracicus* 628. — *Euburia (Eburini) sp.* 629. — Unbekannt. 630. — *Hesperophanus (Cerambycinae) sp.* 631. — *Sternotomis (Lamiinae) bohemanni* Chev. 632. — *Lophonocerus (Sternacanthini) hirticollis* 633. — *Sternotomis (Lamiinae) imperialis* F. 634. — *Leptura (Lepturini) chrysomeloides* 635. — *Gracilia (Cerambycini) minuta* 636. — *Stirastoma (Lamiinae) depressum* L. 637. — *Dorcacerus (Dorcacocerini) barbatus* Ol. 638. — *Megaderus (Megaderini) stigma* L. 639. — *Stirastoma (Lamiinae) marmoratum* Thnb. 640. — *Paranda glabra* 641. — *Ceroplesis (Lamiinae) hottentotta* F. 642. — *Xystrocera globosa* Oliv. 643. — *Hylotrupes bajulus* L. 644. — *Aromia moschata* L. 645. — *Clytus arcuatus* L. 646. — *Nupserha fricator* Dalm. 647. — *Trachyderes (Trachyderini) succinctus* L. 648. — *Stenopterus rufus* L. 649. — *Chloridolum klaesii* 650. — *Trachyderes (Trachyderini) cayennensis* 651. — *dimidiatus* 652. — *Litopus (Callichromini) sp.* 653. — *caffer* 654. — *Cyllene cayennensis* 655. — *Chrysoprasis (Heteropsini) ruficoxis* Bates 656. — *Purpuricenus köhleri* L. 657. — Unbekannt. 658. — *Caenoptera (Cerambycini) minor* L. 659.

87. Chrysomelidae: *Sagra (Sagrini) femorata* 660. — sp. 661. — *Zeugophora (Criocerini) flavicollis* Marsh. 662. — *subspinosa* F. 663. — *Plateumaris (Donaciini) bradata* Scop. 664. — *rustica* Kunze 665. — *consimilis* Schrank 666. — *Donacia clavipes* F. 667. — *bicolora* Zschach 668. — *linearis* Hoppe 669. — *versicolor* Brahm 670. — *dentata* Hoppe 671. — *semicuprea* Panz. 672. — *Chrysochares asiatica* 673. — *Adoxus (Eumolpini) obscurus* L. 674. — *Eumolpus cupreus* 675. — *Aspidomorpha similis* 676. — *punctata* 677. — *Cassida (Cassidini) murraea* L. 678. — *nobilis* L. 679. — *vibex* L. 680. — *nebulosa* L. 681. —

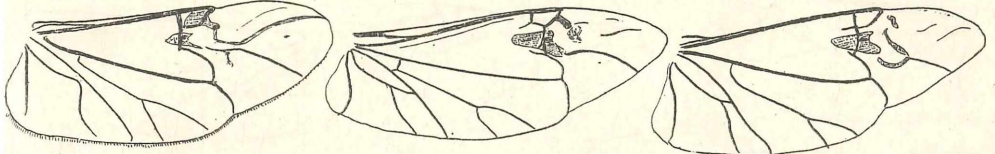




624

625

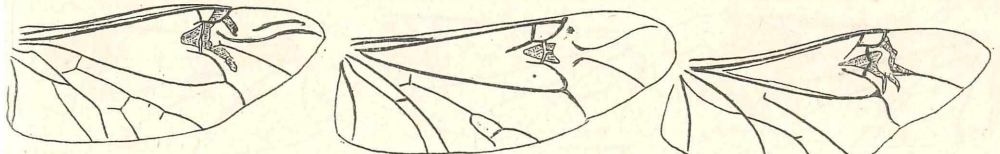
626



627

628

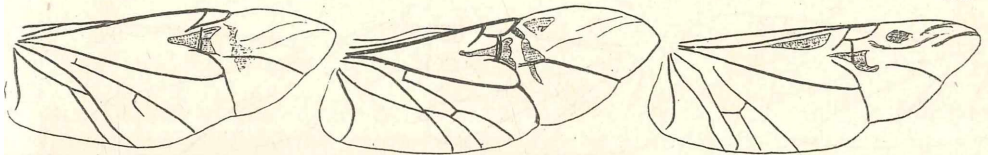
629



630

631

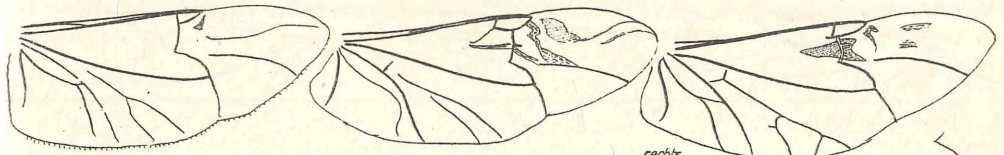
632



633

634

635

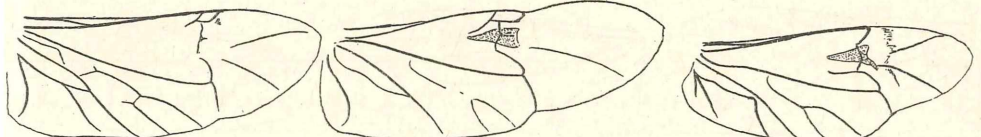


636

637

rechts

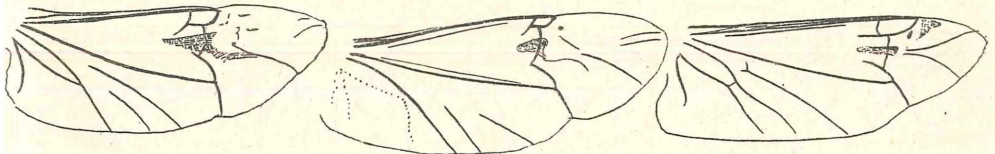
638 links



639

640

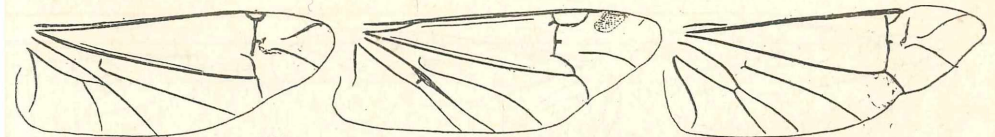
641



642

643

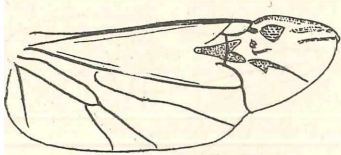
644



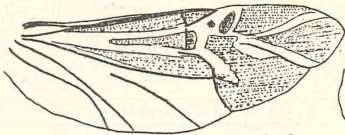
645

646

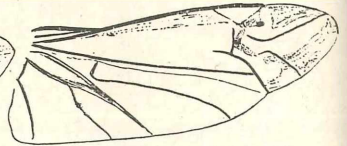
647



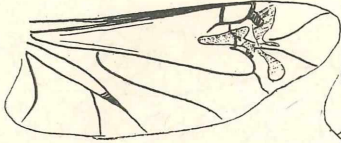
648



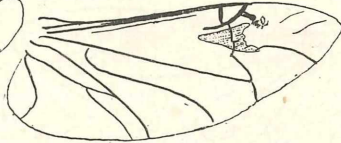
649



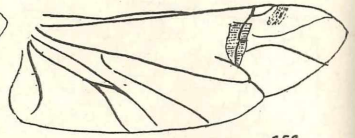
650



651



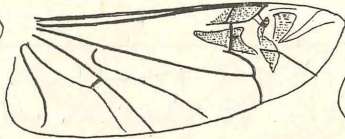
652



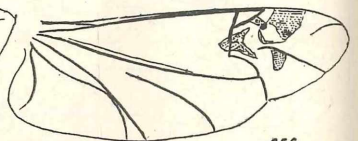
653



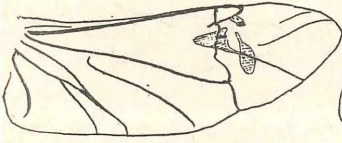
654



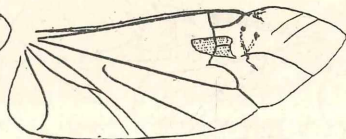
655



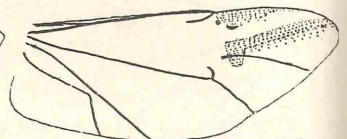
656



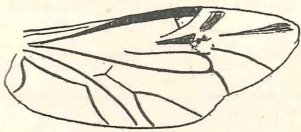
657



658



659



660



661



662

Zugspitze



663



664



665



666



667



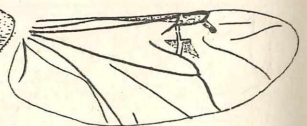
668



669

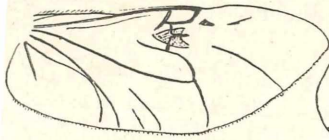


670

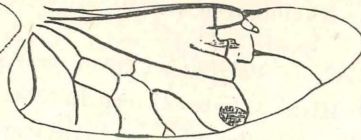


671

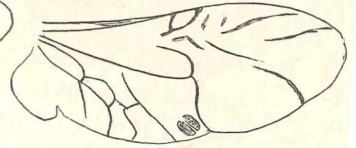




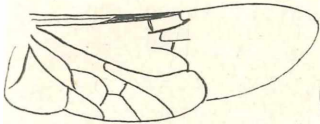
672



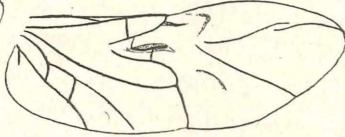
*Chrysoclares* 673 *asiatica*



*Adoxus* 674  
(*Eumolpus*) *occidentalis*



*Eumolpus* 675  
*cypressus*



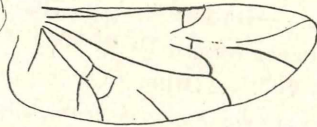
676



677



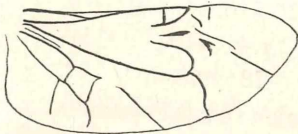
678



679



680



681



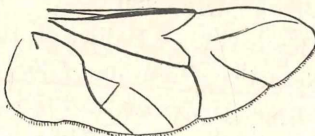
682



683



684



685



686



687



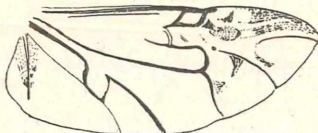
688



689



690



691



692



693



694



695

*Coptocycla catenata* 682. — *Polychalca variolosa* 683. — *Alurnus marginatus* Guér. 684. — *Hispa (Hispini) atra* L. 685. — *Clytra (Clytrini) cyanea* F. 686. — *affinis* Hellw. 687. — *Cryptocephalus (Cryptocephalini) sericeus* L. 688. — *Clytra (Chlytrini) 4-punctata* L. 689. — *Sphaerometopa melanocephala* 690. — *acroleuca* 691. — *Gonioctena (Chrysomelini) viminalis* L. 692. — *Haplosonyx albicornus* 693. — *Aplosonyx albicornis* 694. — *Sermyla (Galerucini) halensis* L. 695. — *Gonioctena (Chrysomelini) olivacea* Forst. 696. — *Luperus (Galerucini) flavipes* L. 697. — *longicornis* F. 698. — *Oides* sp. 699. — *Galeruca (Galerucini) rustica* Schall. 700. — *tanacetii* L. 701. — *Podagrica (Halticini) fuscicornis* L. 702. — *Doridea insignis* 703. — *Aulacophora acutipennis* F. 704. — *Ortholaea ancora* Redt. 705. — *serena* Boh. 706. — *Phyllocharis undulatus* 707. — *Orina (Chrysomelini) polymorpha* 708. — *gloriosa* 709. — *Chrysomela hyperici* Forst. 710. — *polita* L. 711. — *sanguinolenta* L. 712. — *haemoptera* L. 713. — *varians* Schall. 714. — *Melasoma viginti punctata* Scop. 715. — *tremulae* F. 716. — *populi* L. 717. — *saliceti* Weise 718. — *Gastroidea viridula* De G. 719. — *Crioceris (Criocerini) lilii* Scop. 720. — *asparagi* L. 721. — *12-punctata* L. 722. — *Lema melanopa* L. 723. — *cyanella* L. 724. — *Gonophora haemorrhoidalis* 725. — *Prasocuris (Chrysomelini) phellandrii* L. 726. — *Aniscdera* sp. 727. — *Botnjopa sanguinea* 728. — *Graptodera cyanea* 729. — *Crepidodera (Halticini) transversa* Mrsh. 730. — *ferruginea* Scop. 731. — *Mantura chrysanthemi* Koch 732. — *Haltica oleracea* L. 733. — *querce-torum* Foudr. 734. — *Sebaethe affinis* Jac. 735. ? ? 736.

88. Bruchidae: *Bruchus pisorum* L. 737. — *rufimanus* Boh. 738. — *villosus* F. 739. — *Caryoborus bactris* 740.

89. Platyrrhinidae: *Urodon (Urodontini) rufipes* Ol. 741. — *Brachytarsus variegatus* Fourc 742. — *Macrocephalus (Platyrrhinini) albinus* 743. —

90. Anthribidae: *Mecocerus gasella* 744. — *Eucorynus crassicornis* 746. .

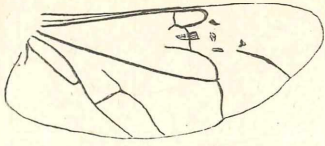
91. Nemomychidae: *Rhinomacer attelaboides* F. 745.

92. Platypidae: *Crossotarsus bonvouloiri* 747. — *Platypus solidus* 748.

93. Scolytidae: *Scolytus (Scolytini) destructor* Ol. 749. — *Myelophilus (Hylesinini) piniperda* L. 750. — *Hylastes (Hylastini) ater* Payk. 751. — *Tomieus (Tomieini) 6-dentatus* Boerner 752. — *laricis* F. 753. — *Xylocleptes bispinus* Dfts. 754.

94. Curculinidae: *Apoderus (Attelabini) coryli* L. 755. — *Attelabus nitens* Scop. 756. — *Rhynchites (Rhynchitini) nanus* Payk. 757. — *Apion (Apionini) marchicum* Herbst. 758. — *Phyllobius (Phyllo-*

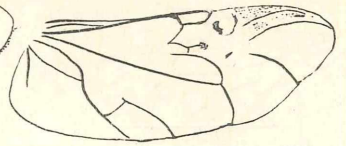




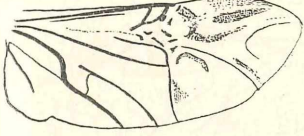
696



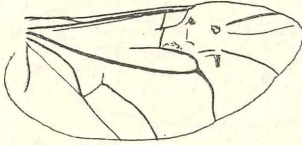
697



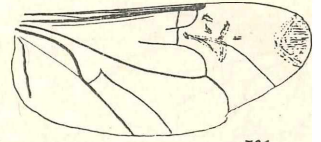
698



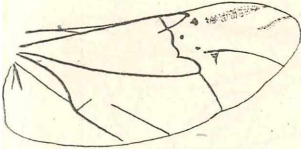
699



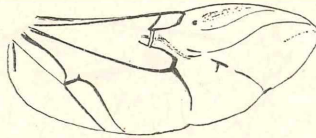
700



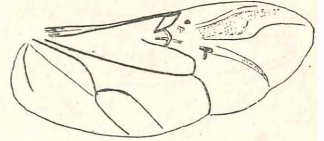
701



702



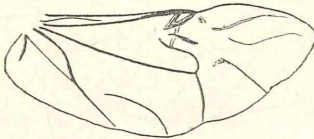
703



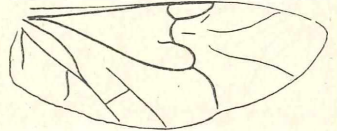
704



705



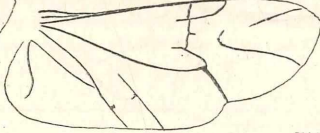
706



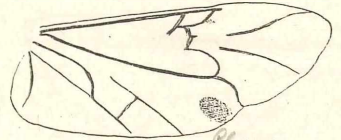
707



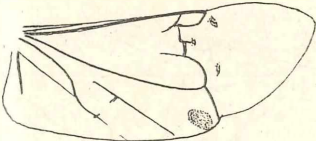
*Ornia*  
708  
*polymorpha*



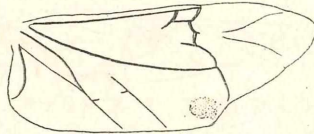
*gloriosa*  
709



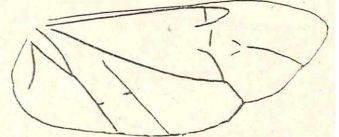
*Chrysom*  
710  
*hyperica*



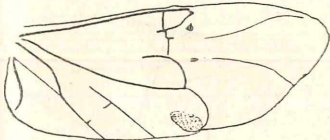
*Chripidia*  
711



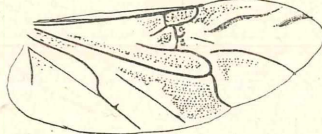
*sanguinolenta*  
712



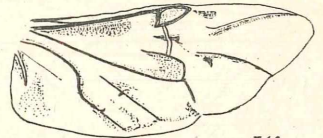
*laenoptera*  
713



*varia*  
714



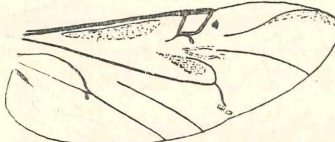
*Melasma*  
715  
*20-punctata*



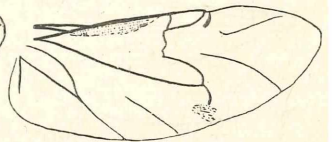
*femular*  
716



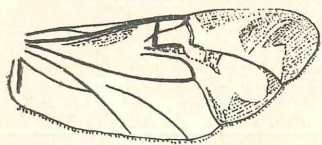
717



718



719



720



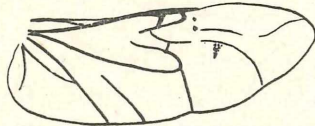
721



722



723



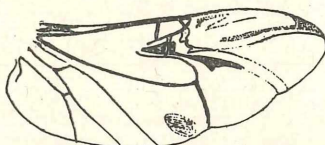
724



725

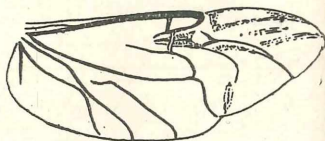


726

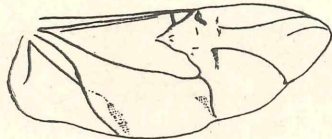


*Anisodera* sp.

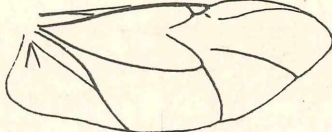
727



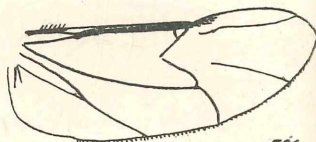
728



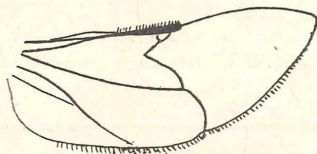
729



730



731



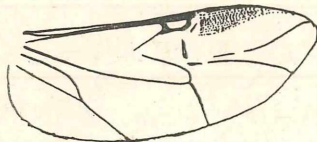
732



733



734



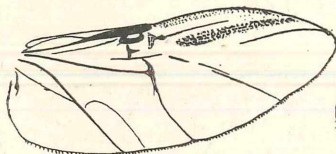
735



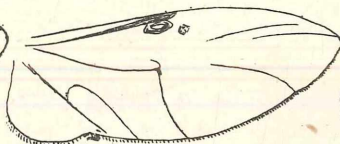
736



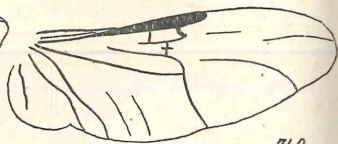
737



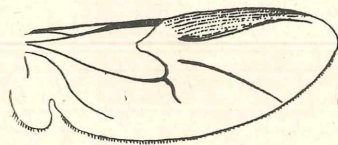
738



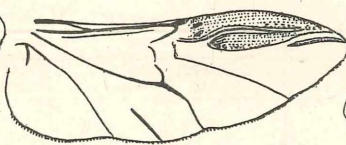
739



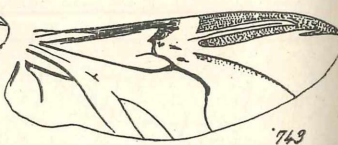
740



741

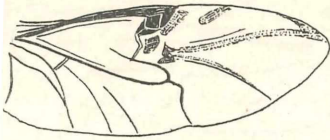


742

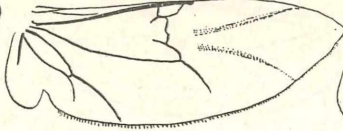


743

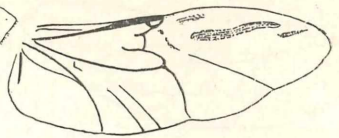




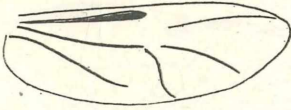
744



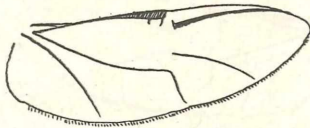
745



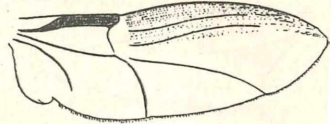
746



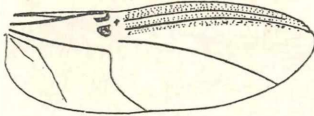
747



748



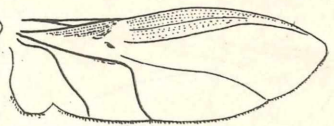
749



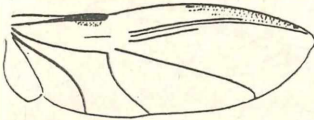
750



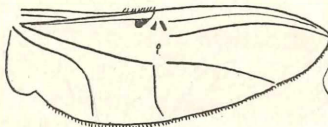
751



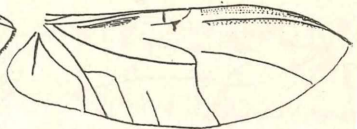
752



753



754



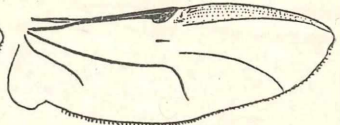
755



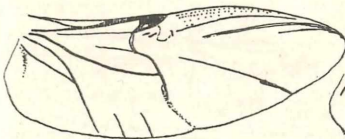
756



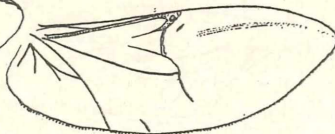
757



758



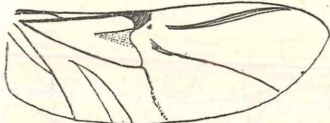
759



760



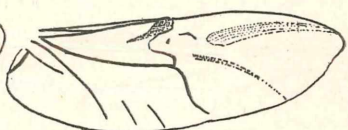
761



762



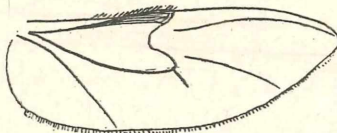
763



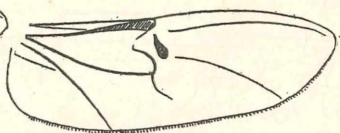
764



765



766



767





*biini*) *argentatus* L. 759. — *Sitona* (*Sitonini*) *grisea* F. 760. — *Hypera* (*Hyperini*) *punctata* F. 761. — *Cleonus* (*Lixini*) *sulcirostris* L. 762. *Lepyrus* (*Curculionini*) *palustris* Scop. 763. — *Larinus* (*Lixini*) *maurus* 764. — *Curculio* (*Curculionini*) *abietis* L. 765. — *Tanysphyrus* (*Tanysphyrini*) *lemnae* Payk. 766. — *Stenopelmus rufinatus* Gyll. 767. — *Grypидius* (*Erirhinini*) *equiseti* F. 768. — *Dorytomus dejeani* Faust 769. — *Orchestes* (*Orchestini*) *quercus* L. 770. — *Anthonomus* (*Anthonomini*) *rubi* Herbst 771. — *Magdalis* (*Magdalini*) *duplicata* Germ. 772. — *Mecinus* (*Gymnetrini*) *piraster* Herbst 773. — *Cryptorrhynchus* (*Pissodini*) *lapathi* L. 774. — *Cionus* (*Cionini*) *scrophulariae* L. 775. — *Mononychus* (*Ceuthorrhynchini*) *punctum album* Herbst 776. — *Ceutorrhynchus marginatus* Payk. 777. — *Balaninus* (*Balaninini*) *venosus* Grav. 778. — *Calandra* (*Calandrini*) *oryzae* L. 779. — *Episomus simulator* Faust 780. — *Cossonus* (*Cossonini*) *planatus* Bedel 781. — *Sipalus gigas* 782. — *guinensis* 782. — ? 784. — ? (Kl. Klapperkäfer) 785.

95. Brenthidæ: *Baryrhynchus deluxus* 786. — *Schizotrachelus brevicaudatus* 787. — *Eutrachelus temmincki* 788. — *Diurus furcillatus* Gyll. 789. — ? 790. — *Magacerus pubescens* 791.

## A. Dampfs Aegypten-Ausbeute: Thysanoptera.

Von H. Priesner, Linz.

(Mit 8 Textfiguren.)

(Schluß.)

Es liegen mir auch drei zu dieser Art gehörige Puppen vor, die sich durch sehr lange Borsten auszeichnen. Prothorax in derselben Anordnung wie bei der Imago beborstet. Die Flügelscheiden erreichen etwa das 5. Abdominalsegment, die Außenränder der vorderen sind mit je 6 langen Borsten versehen (längste 68  $\mu$ ), die an kleinen Erhebungen sitzen. Am 9. Abdominaltergit des ♀ sehe ich oben 4 nicht besonders lange (11  $\mu$ ) Stacheln, die voneinander ziemlich weit abstehen (Abb.). Das letzte Segment ist nicht spitzig ausgezogen.

Fundorte: 2 Larven, 3 Puppen, Madi, 13. VIII. 1919, Sonnenblume, im Gespinst von Spinnmilben!; 1 ♀, 1 Larve, Madi, 16. VIII. 1919, in Blüten der oben (*Anaph. antilope*!) genannten Komposite; 2 ♀♀, Madi, 21. VII. 1919, aus der Lebensgemeinschaft der dichten Bestände einer *Chenopodiacee* (*Echinopsilon* ?) am Niluferhang; 1 Larve, Madi, 13. VIII. 1919, *Echinopsilon* (?), zwischen Milben (!).

# ZOBODAT - [www.zobodat.at](http://www.zobodat.at)

Zoologisch-Botanische Datenbank/Zoological-Botanical Database

Digitale Literatur/Digital Literature

Zeitschrift/Journal: [Entomologische Mitteilungen](#)

Jahr/Year: 1923

Band/Volume: [12\\_1923](#)

Autor(en)/Author(s): Bernet Kempers K. J. W.

Artikel/Article: [Abbildungen von Flügelgeäder der Coleopteren. 71-115](#)