

Parornix compsumpta sp. n., a new species of Gracillariidae from south-eastern Europe

(Lepidoptera, Gracillariidae)

By Paolo TRIBERTI

Abstract

The new species, which is closely related to *Parornix acuta* TRIBERTI, was collected in the mountains of Greece and southern Yugoslavia, at elevations between 1 000 and 1 600 m above sea-level. Diagnostic characters to distinguish the two related species are given.

Parornix compsumpta sp. n.

Holotype (♂): Grecia, M. Taygetos, 1 200 m, 8. 8. 1980, P. TRIBERTI leg. (Genital slide Trb 1 345 ♂), in coll. TRIBERTI.

Paratypes: 1 ♀, 3. – 10. 9. 1953, Petrina plan., Macedonis, 1 600 m., J. THURNER leg. (G. s. Trb 1 192 ♀), in coll. Zoologische Staatssammlung in München; 2 ♀ ♀, 1 ♂, Grecia, Lakonia, Mt. Taygetos m. 1 050, 27. 7. 1982 (Woodlux), G. BALDIZZONE leg. (G. s. Trb 1 342 ♀, 1 340 ♂) in coll. TRIBERTI; 1 ♀, Jugoslavia, Ohrid, Openica m. 1 100, 7. 8. 1979, P. TRIBERTI leg. (G. s. Trb 777 ♀) in coll. TRIBERTI; 1 ♀, Jugoslavia, Ohrid, Galicica, m. 1 000, 7. 8. 79. P. TRIBERTI leg. (G. s. Trb 782 ♀) in coll. TRIBERTI.

Description. Face and head white-greyish, irrorated with brown scales. Labial and maxillary palpi whitish, apical segment of labial palpi spotted with brown; maxillary palpi 1/4 length of labial palpi. Scape brownish, spotted with white; pecten of few hairs. Segments of antennae white-ochreous, edged with brown apically. Thorax and tegulae white ochreous, irrorated with some brown scales. Fore and middle legs dark brown, coxae and femora with whitish blotches; hind legs ochre; all tarsi whitish, each segment with a dark apical blotch, less clear in the hind legs. Alar expanse 9–10 mm. Forewing white-ochreous, irrorated with brown scales; costa with numerous whitish strigulae, indistinct at basal half and oblique outwardly, except two at apex; these are direct or oblique inwardly, apical strigula reaching almost dorsal margin; cilia brownish along termen with two blackish subapical lines, along dorsal margin wholly pale grey. Hindwings greyish-brown, with cilia greyish-white.

♂ Genitalia. Tegumen short; tuba analis moderate in length, without setaceous areas at base; short, triangular and well defined subscaphium. Valva supplied with a tooth ventro-distally. Saccus wide basally with two long curved projections; transstilla rather wide, a little projection at middle and a pair of short labides. Saccus slender, truncated apically. Aedoeagus curved, bluntly pointed apically, a short projection at base; ductus ejaculatorius sclerotized anteriorly. Eighth sternite with a triangular lobe on caudal margin.

♀ Genitalia. Postapophysis longer than antapophysis; papillae anales with lateral lobes. A deep hollow just above ostium bursae, that is placed on proximal margin of 8th sternite. Ductus bursae long, narrow, a distinct scobinate area on cervix bursae; corpus bursae ellipsoidal, with two circular scobinate signa.

Biology. Unknown.

Distribution. Yugoslavia (Macedonia), Greece (Peloponneso). It is interesting to note that the species has always been found between 1 000 and 1 600 m. in height.

Remarks. This species is related to *Parornix acuta* TRIB. but it is easily distinguished as follows: – In the male, the saccus is slender, straight, not rounded as in *acuta*; the aedoeagus is differently curved. In the female the antrum is not sclerotized and signa are circular.

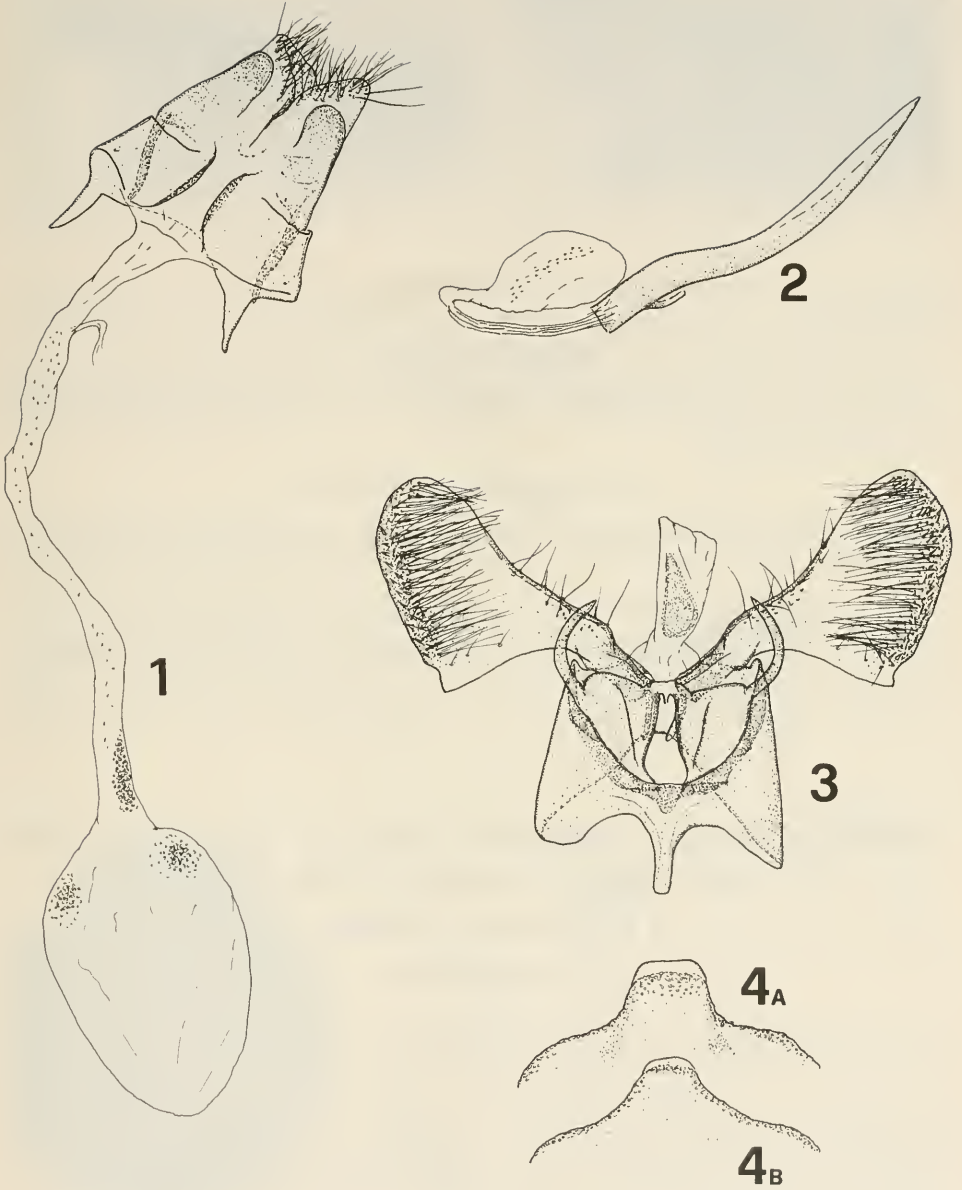


Fig. 1–4. *Parornix consumpta* sp. n. 1: Female genitalia. 2: Aedeagus. 3: Male genitalia. 4A–B: Variability of lobe of 8th sternite.



Fig. 5-6. *Parornix compsumta* sp. n. 5: Jugoslavia, Ohrid, Openica (♀). 6: Jugoslavia, Ohrid, Galicica (♀).

Acknowledgements

I wish to express my cordial thanks to Dr. W. DIERL, Zoologische Staatssammlung München, and my dear friend, Dr. G. BALDIZZONE, Asti, for having allowed me to study their valuable material.

References

TRIBERTI, P. 1980: *Parornix acuta* n. sp. (Lepidoptera, Gracillariidae). – *Entomologica*, **16**: 77–80.

Anschrift des Autors:

Paolo TRIBERTI

Museo Civico di Storia Naturale, Lungedige Porte Vittoria, 9, I-37100 VERONA

Scymnus (Nephus) klapperichi syn. nov. von **Cryptogonus orbiculus** (GYLLENHAL, 1808: 205)

(Coleoptera, Coccinellidae)

Von Helmut FÜRSCHE

Scymnus (Nephus) klapperichi syn. nov. of *Cryptogonus orbiculus* (GYLLENHAL, 1808).

L. MADER beschrieb 1955 in *Koleopterol. Rundsch.* 33 (1–6): 73 einen *Scymnus (Nephus) klapperichi* aus Kuatun (Fukien). Die Typen aus dem Museum FREY und der Sammlung KLAPPERICH konnten studiert werden und erlauben eine eindeutige Zuordnung zu *Cryptogonus orbiculus* (GYLLENHAL). Die Art ist abgebildet bei SASAJI, H. 1971: *Fauna Japonica Coccinellidae*: 194, 196 und PANG XIONG-FEI & MAO JING-LONG: *Fauna Economic Insects* 16: 59.

Anschrift des Verfassers:

Prof. Dr. Helmut FÜRSCHE

Universität Passau, Postfach 25 40, D-8390 Passau

ZOBODAT - www.zobodat.at

Zoologisch-Botanische Datenbank/Zoological-Botanical Database

Digitale Literatur/Digital Literature

Zeitschrift/Journal: [Nachrichtenblatt der Bayerischen Entomologen](#)

Jahr/Year: 1987

Band/Volume: [036](#)

Autor(en)/Author(s): Triberti Paolo

Artikel/Article: [Parornix compsumpta sp. n., a new species of Gracillariidae from south-eastern Europe \(Lep. Gracillariidae\). 50-52](#)