

# Stuttgarter Beiträge zur Naturkunde

## Serie A (Biologie)

Herausgeber:

Staatliches Museum für Naturkunde, Rosenstein 1, D-70191 Stuttgart

Stuttgarter Beitr. Naturk.	Ser. A	Nr. 565	65 S.	Stuttgart, 31. 12. 1997
----------------------------	--------	---------	-------	-------------------------

## Coccinellidae (Coleoptera) from the Nepal Himalayas\*

By Claudio Canepari, San Donato Milanese

With 148 figures and 1 table

### Summary

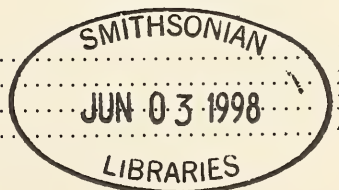
Newly collected Coccinellidae from the Nepal Himalayas are treated (114 species), among which 36 species are recorded for the first time from Nepal and 27 species are new to science: *Sticholotis duodecimmaculata* n. sp., *Sticholotis rufolimbata* n. sp., *Ghanius schawalleri* n. sp., *Pseudoscymnus funerarius* n. sp., *Pseudoscymnus ocelliferus* n. sp., *Pseudoscymnus luteoniger* n. sp., *Scymnus trisulcatus* n. sp., *Scymnus sufflavus* n. sp., *Scymnus (Pullus) mellinus* n. sp., *Scymnus (Pullus) hepaticus* n. sp., *Scymnus (Pullus) rufoniger* n. sp., *Scymnus (Pullus) schawalleri* n. sp., *Scymnus (Pullus) martensi* n. sp., *Scymnus (Pullus) exilis* n. sp., *Scymnus (Pullus) fruticis* n. sp., *Scymnus (Pullus) lucicolus* n. sp., *Scymnus (Pullus) kosianus* n. sp., *Scymnus (Pullus) suturaloides* n. sp., *Hyperaspis marginaloides* n. sp., *Platynaspis nepalensis* n. sp., *Priscibrumus disjunctus* n. sp., *Sumnius hoangi* n. sp., *Oenopia smetanai* n. sp., *Oenopia diabolica* n. sp., *Epilachna schawalleri* n. sp. A new subgenus of *Scymnus* (*Orthoscymnus* n. subgen.) is described with the 2 new species *Scymnus (Orthoscymnus) smetanai* n. sp. (type species) and *Scymnus (Orthoscymnus) rhododendri* n. sp. Remarks on zoogeography and vertical distribution are added.

### Zusammenfassung

Neu gesammelte Marienkäfer (Coccinellidae) aus dem Nepal Himalaya werden behandelt (insgesamt 114 Arten), darunter befinden sich 36 Neunachweise für Nepal und 27 neue Arten (siehe Summary). Anmerkungen zur Zoogeografie und Höhenverbreitung werden angefügt.

### Contents

1. Introduction .....	1
2. Material and methods .....	2
3. List of Coccinellidae known from Nepal until 1985 .....	3
4. The treated species of Coccinellidae .....	4



\* ) Results of the Himalaya Expeditions of J. MARTENS, no. 214. – For no. 213 see: Bonner zool. Beitr. 47, 1997. – J. M. sponsored by Deutscher Akademischer Austauschdienst and Deutsche Forschungsgemeinschaft.

4.1. Subfamily Sticholotidinae . . . . .	4
<i>Jauravia</i> 4, – <i>Sticholotis</i> 5, – <i>Ghanius</i> 6.	
4.2. Subfamily Scymninae . . . . .	7
<i>Pseudoscymnus</i> 7, – <i>Scymnus</i> 8, – <i>Nephus</i> 18, – <i>Stethorus</i> 18, – <i>Hyperaspis</i> 18, – <i>Cryptogonus</i> 19.	
4.3. Subfamily Chilacorinae . . . . .	20
<i>Telsimia</i> 20, – <i>Platynaspidius</i> 20, – <i>Chilocorus</i> 45, – <i>Priscibrumus</i> 45, – <i>Brumoides</i> 46.	
4.4. Subfamily Coccidulinae . . . . .	46
<i>Lithophilus</i> 46, – <i>Sumnius</i> 46, – <i>Rodolia</i> 47.	
4.5. Subfamily Coccinellinae . . . . .	48
<i>Menochilus</i> 48, – <i>Adalia</i> 48, – <i>Propylea</i> 48, – <i>Bothrocalvia</i> 49, – <i>Calvia</i> 49, – <i>Halyzia</i> 49, – <i>Lemnia</i> 50, – <i>Alloneda</i> 50, – <i>Illeis</i> 50, – <i>Hippodamia</i> 50, – <i>Coccinella</i> 51, – <i>Oenopia</i> 53, – <i>Harmonia</i> 55-, – <i>Micraspis</i> 55, – <i>Synonycha</i> 55.	
4.6. Subfamily Epilachninae . . . . .	56
<i>Henosepilachna</i> 56, – <i>Epilachna</i> 57, – <i>Afidentula</i> 57, – <i>Afissa</i> 58, – <i>Afissula</i> 62.	
5. Distribution . . . . .	64
6. References . . . . .	64

## 1. Introduction

The first work about Nepalese Coccinellidae was written by HOPE (1831), who gave the first comprehensive study of Coleoptera from that area in general. After him only single species were described until 1958 when KAPUR presented a list of the 41 known species, publishing the results of a British Nepal Expedition. In the following years after the opening of the country for foreigners, different expeditions and single entomologists increased our knowledge and many new species were described (BIELAWSKI 1971, 1972; MIYATAKE 1985). Nevertheless our knowledge about Coccinellidae is far from being complete. In particular the micro-Coccinellidae of the subfamilies Sticholotidinae, Scymninae and Aspidimerinae were rarely collected.

In this paper I summarize huge and quite diverse materials of Coccinellidae, which were collected in recent years by Dr. I. LÖBL (Geneva), Dr. A. SMETANA (Ottawa), Prof. Dr. J. MARTENS (Mainz) and Dr. W. SCHAWALLER (Stuttgart) (expeditions until 1988). This material enlarges our knowledge with many new data, records and species.

## 2. Material and methods

The specimens were dissected by detaching the abdomen and when necessary antennae and legs. The dissected parts were treated by KOH 10%, CH<sub>3</sub>COOH 50%, and washed in water. The male genitalia were mounted on a cardboard by hydrosoluble glue; antennae, legs and female genitalia were mounted on a microslide in Euparal. All dissected parts are attached to the same pin as the specimen.

The material was studied in different periods and with different microscopes. For this reason I was obliged to use many different scales (see p. 21).

The material collected by J. MARTENS and W. SCHAWALLER is kept in the Staatliches Museum für Naturkunde Stuttgart (SMNS), the material collected by I. LÖBL and A. SMETANA in the Muséum d'Histoire Naturelle Genève (MHNG). Duplicates were retained in the author's collection (CC).

The Asiatic area is herein roughly divided in the following regions:

- H* = Himalayan region: Nepal, northern India (Uttar Pradesh, Jammu and Kashmir, Assam, Sikkim), Bhutan, Tibet, southern China;
- SA* = South Asiatic: India, Burma, China, Japan, Indonesia;
- NA* = North Asiatic: From the Himalayas to Siberia;
- WA* = West Asiatic: From western India and northern Pakistan to Turkey;
- E* = Endemic in Nepal.

### 3. List of Coccinellidae known from Nepal until 1985

#### Subfamily Sticholotidinae

*Sticholotis amator* Kapur  
*Sticholotis kumatai* Miyatake  
*Sticholotis nepalensis* Miyatake  
*Jauravia limbata* Motschoulsky  
*Jauravia quadrinotata* Kapur

#### Subfamily Scymninae

*Pseudoscymnus nepalicus* Miyatake  
*Scymnus* (s. str.) *bourdilloni* Kapur  
*Scymnus* (s. str.) *nubilus* Mulsant  
*Scymnus* (*Pullus*) *godavariensis* Miyatake  
*Scymnus* (*Pullus*) *janetscheki* Bielawski  
*Scymnus* (*Pullus*) *nepalensis* Bielawski  
*Scymnus* (*Pullus*) *pyrocheilus* Mulsant  
*Cryptogonus nepalensis* Bielawski  
*Cryptogonus orbiculus* (Gyllenhal)  
*Cryptogonus trioblitus* (Gorham)

#### Subfamily Chilocorinae

*Plastynaspidius saundersi* (Crotch)  
*Chilocorus bijugus* Mulsant  
*Chilocorus matsumurai* Miyatake  
*Chilocorus politus* Mulsant  
*Chilocorus rubidus* Hope  
*Priscibrumus himalayensis* (Kapur)  
*Priscibrumus uropygialis* (Mulsant)  
*Brumoides suturalis* (Fabricius)

#### Subfamily Coccidulinae

*Sumnius vestitus* Mulsant  
*Rodolia octoguttata* Weise

#### Subfamily Coccinellinae

*Hippodamia variegata* (Goeze)  
*Bulaea nevilli* Dohrn  
*Micraspis inops* (Mulsant)  
*Micraspis univittata* (Hope)  
*Coelophora circumvelata* Mulsant (= *cincta* Hope)  
*Spilocaria bissellata* (Mulsant)  
*Lemnia biplagiata* (Swartz)  
*Phrynocaria eberti* (Bielawski)  
*Coccinella luteopicta* (Mulsant)  
*Coccinella nepalensis* (Iablokoff-Khnzorian)  
*Coccinella septempunctata* Linnaeus  
*Coccinella transversalis* Fabricius  
*Protocaria billieti* (Mulsant)  
*Propylea dissecta* (Mulsant)  
*Gyrocaria mimica* (Weise)  
*Gyrocaria sauzeti* (Mulsant)  
*Gyrocaria sexareata* (Mulsant)  
*Pania luteopustulata* (Mulsant)  
*Adalia tetraspilota* (Hope)  
*Harmonia axyridis* (Pallas)  
*Harmonia dimidiata* (Fabricius)  
*Harmonia eucharis* (Mulsant)

*Harmonia sedecimnotata* (Fabricius)  
*Calvia albida* (Bielawski)  
*Calvia uniramosa* (Hope)  
*Calvia vulnerata* (Hope)  
*Alloneda dodecaspilota* (Hope)  
*Aiolocaria hexaspilota* (Hope)  
*Palaeoneda miniata* (Hope)  
*Menochilus sexmaculatus* (Fabricius)  
*Halyzia sanscrita* Mulsant  
*Halyzia straminea* (Hope)  
*Synonycha grandis* (Thunberg)  
*Megalocaria dilatata* (Fabricius)

#### Subfamily Epilachninae

*Epilachna decemmaculata* Redtenbacher  
*Epilachna dumerili* Mulsant  
*Epilachna gibbera* Crotch  
*Epilachna gorkhana* Miyatake  
*Epilachna grayi* Mulsant  
*Epilachna hendecaspilota* (Mader)  
*Epilachna hingstoni* (Kapur)  
*Epilachna hopeiana* Miyatake  
*Epilachna kathmanduensis* Miyatake  
*Epilachna macularis* Mulsant  
*Epilachna maculivestis* Mulsant  
*Epilachna marginicollis* (Hope)  
*Epilachna militaris* (Dieke)  
*Epilachna mystica* Mulsant  
*Epilachna mysticoides* (Sicard)  
*Epilachna nepalensis* (Kapur)  
*Epilachna nielamuensis* Pang & Mao  
*Epilachna ocellata* Redtenbacher  
*Epilachna vigintioctopunctata* (Fabricius)  
*Affisula rana* Kapur  
*Afidenta misera* (Weise)  
*Afidentula manderstjernae* (Mulsant).

## 4. The treated species of Coccinellidae

### 4.1. Subfamily Sticholotidinae

*Jauravia quadrinotata* Kapur, 1946

KAPUR, 1946, p. 85.

BIELAWSKI, 1972, p. 297.

MIYATAKE, 1985, p. 3.

Material (5 ex.). – SMNS: Kathmandu City, 1350 m, Ganabahal, 5–6. IV. 1980, leg. MARTENS & AUSOBSKY, 1 ex. – Taplejung Distr., Yamputhin, cultural land, open forest, 1650–1800 m, 26. IV.–1. V. 1988, leg. MARTENS & SCHAWALLER, 3 ex. – Sankhua Sabha Distr., Arun valley betw. Num and Mure, tree-rich cultural land, 1600–1900 m, 8. VI. 1988, leg. MARTENS & SCHAWALLER, 1 ex.

Distribution: India (Assam), Nepal, Bhutan.

*Jauravia limbata* Motschoulsky, 1858

KAPUR, 1946, p. 82.

BIELAWSKI, 1972, p. 296.

Material (3 ex.) – SMNS: Gorkha Distr., Buri Gandaki, Labubesi-Gorlabesi, 900–1000 m, broadleaved forest, 29. VII. 1983, leg. MARTENS & SCHAWALLER, 1 ex. – Taplejung Distr., betw. Amjilesa and mouth of Gunsa Khola, 1850–1500 m, forest remnants, 13. IX. 1983, leg. MARTENS & DAAMS, 2 ex.

Distribution: India, Sri Lanka, Nepal.

*Sticholotis duodecimpunctata* Weise, 1910

WEISE, 1910, p. 50.

MADER, 1955, p. 820.

CANEPARI, 1986, p. 23.

Material (3 ex.) – SMNS: Panchthar Distr., Paniporua, mixed broadleaved forest, 2300 m, 16–20. IV. 1988, leg. MARTENS & SCHAWALLER, 1 ex. – Taplejung Distr., above Yamputhin, left bank of Kabeli Khola, bushes, open forest, 1800–2000 m, 27–29. IV. 1988, leg. MARTENS & SCHAWALLER, 1 ex. – Sankhua Sabha Distr., Arun valley betw. Num and Mure, tree-rich cultural land, 1600–1900 m, 8. VI. 1988, leg. MARTENS & SCHAWALLER, 1 ex.

Distribution: India (western Bengal, Sikkim), Himalaya, New for Nepal.

*Sticholotis decempunctata* Sicard, 1910

SICARD, 1910, p. 387.

Material (3 ex.) – SMNS: Nepal, Modi Khola valley, Birethanti, 1000 m, 14. VII. 1973, leg. MARTENS, 1 ex. – Sankhua Sabha Distr., Arun valley, Chichila, *Quercus* forest, bushes near village, 1900–2000 m, 18–20. VI. 1988, leg. MARTENS & SCHAWALLER, 1 ex. – MHNG: Kosi, Arun valley, Num, 1050 m, 22. IV. 84, leg. LÖBL & SMETANA, 1 ex.

Distribution: India. New for Nepal.

*Sticholotis nepalensis* Miyatake, 1985

MIYATAKE, 1985, p. 4.

Material (2 ex.) – SMNS: Kathmandu valley, Phulchoki, 2600–2650 m, *Quercus* forest, 14. V. 1980, leg. MARTENS & AUSOBSKY, 1 ex. – MHNG: Lalitpur Distr., Phulchoki, 2650 m, 13. X. 1983, leg. SMETANA & LÖBL, 1 ex.

Distribution: Nepal.

*Sticholotis kumatai* Miyatake, 1985

MIYATAKE, 1985, p. 6.

CANEPARI, 1986, *Sticholotis loebli*, p. 22, n. syn.

Material (1 ex.) – MHNG: Lalitpur Distr., Phulchoki, 2650 m, 15. X. 83, leg. SMETANA & LÖBL, 1 ex.

Remarks: I described this species under the name *St. loebli* in 1986 from a specimen of Malemchi (Prov. Bagmati), 2900 m.

Distribution: Nepal.



*Sticholotis duodecimmaculata* n. sp. (figs 1–3)

Holotype (♂): Nepal, Taplejung Distr., upper Tamur valley from Lungthung/waterfall to bamboo bridge, 1800–2150 m, open forest, bushes, 19. V. 1988, leg. MARTENS & SCHAWALLER (SMNS).

Description: Body subhemispherical, red with scutellar region and sutura obscured, and with 12 black (6 on each elytra) spots. Spot 1 rounded on the humeral callus, spot 2 oval, parasutural at one fourth of sutural length, spot 3 lateral at one third of the length, spot 4 on the disc, spot 5 parasutural at two thirds, spot 6 round preapical, on the same longitudinal line of spot 4. Ventral part red. Pronotum and elytra laterally pubescent. Head regularly punctured; the punctures separated by one diameter. Space between points reticulated. Pronotum regularly and sparsely punctured; punctures separated by 1.5 diameters. Elytra very closely punctured, the punctures separated by half a diameter, two times bigger than head punctures, and 1.5 times than pronotal ones. Lateral margin of the elytra more strongly and sparsely punctured. Antennae one fifth of body length, red with brown antennal club. Frons three times as wide as the diameter of an eye. Male genitalia as in figs 2–3.

Length: 2.55 mm, width 1.95 mm.

*Sticholotis rufolimbata* n. sp. (figs 4–5)

Holotype (♂): Nepal, Sankhua Sabha Distr., Arun valley, betw. Darapangma and Khandbari, tree-rich cultural land, 1400–1100 m, 21. VI. 1988, leg. MARTENS & SCHAWALLER (SMNS).

Paratypes (3 ex.): Sankhua Sabha Distr., Arun valley, betw. Khandbari and Tumlingtar, 1100–1800 m, tree-rich cultural land, 21. VI. 1988, leg. MARTENS & SCHAWALLER, 1 ex. – Taplejung Distr., from Sablako Pass to Limbudin, 1300–1600 m, tree-rich cultural land, bushes, 22. IV. 1988, leg. MARTENS & SCHAWALLER, 1 ex. – Sankhua Sabha Distr., Arun valley, Tumlingtar, tree-rich cultural land near airport, 550 m, 21–22. VI. 1988, leg. MARTENS & SCHAWALLER, 1 ex. (SMNS, CC).

Description: Body subhemispherical; head and pronotum red, elytra black with the external border (width one ninth of each elytron) red. Elytral epipleura red; pro-, meso- and metasternum reddish brown. Legs, antennae and abdomen red. Head with close and strong punctures; distance between points 1–2 diameters on the anterior margin, 2–3 diameters on the disc. Pronotum subtrapezoidal with anterior angles right and rounded, finely bordered. Elytra sparsely punctured with stronger punctures on the lateral margin; pro-, meso- and metasternum sparsely and superficially punctured. Space among points shining.

Length: 2.25–2.40 mm, width 1.95–2.10 mm.

*Ghanius schawalleri* n. sp. (figs 6–14)

Holotype (♂): Nepal, Gorkha Distr., Chuling Khola, Djongshi Kharka, 3050–3400 m, 5. VIII. 1983, leg. MARTENS & SCHAWALLER (SMNS).

Paratype (1 ex.): Taplejung Distr., Gansa Khola, betw. Kibla and Amjilesa, 2600–2400 m, mixed forest, 12. IX. 1983, leg. MARTENS & DAAMS (CC).

Description: Body elongate oval with subparallel sides and slight acute apex. General colouration black with one sub-oblique, red spot in the second third of each elytron. Elytral epipleura, mouth parts, tarsi and apex of femora reddish; legs brown. Head with clypeus extended laterally to surround the external margin of the eyes. Interocular space as wide as a diameter of eye. Eyes elongate oval and disposed ver-

tically. Pronotum narrower than the elytra, two times wider than long, anterior angles acute, anterior margin concave to receive the head, posterior margin convex and not sinuous. Elytra with reflected lateral margin, epipleura regularly narrowing from the base to the apex, ending in correspondance of the 3rd abdominal segment. Pubescence short and regular. Punctuation of the head and pronotum very fine and regular, that of the elytra strong and irregular. Prosternum without carinae, the anterior margin convex but not concealing mouthparts. Metasternum slightly convex. Abdomen with 5 visible segments. Metacoxal lines of first abdominal segment composed by almost right segments converging posteriorly and forming the shape of a V. All femora long, narrow and reaching beyond the lateral margin of the body.

Length: 1.65 mm, width 1.00 mm.

Remarks: The paratype is identical to holotype, but the pronotum is red. The genus *Ghanius* was described in 1973 by AHMAD who created the new tribe Ghaniini. This was subsequently synonymized by SASAJI (1971) with the tribe Shirozuellini.

#### 4.2. Subfamily Scymninae

##### *Pseudoscymnus funerarius* n. sp. (figs 15–20)

Holotype (♂): Nepal, Ilam Distr., Mai Pokhari, 2100–2200 m, *Castanopsis* forest remnants, 9–10. IV. 1988, leg. MARTENS & SCHAWALLER (SMNS).

Paratypes (3 ex.): Ilam Distr., Mai Pokhari, 2100–2300 m, 25–27. III. 1980, leg. MARTENS & AUSOBSKY, 2 ex. – Ilam Distr., Mai Pokhari, 2100–2200 m, *Castanopsis* forest remnants, 9–10. IV. 1988, leg. MARTENS & SCHAWALLER, 1 ex. (SMNS, CC).

Description: Body oval, convex, pubescent. General colouration black, except for a narrow anterior margin of the pronotum and a little wider apical margin on the elytra red. Ventral part black with 5th abdominal sternite brown. Legs black with apex of the tibiae yellow. Antennae, mouthparts and tarsi yellow. Frons square, interocular distance equal to the ocular diameter. Pronotum a the basis twice as wide as head, subtrapezoidal, about twice as wide as long. Humeral callus prominent, scutellum in a shape of an isoscaled triangle. Elytral epipleura reaching the base of first abdominal sternite. Prosternum with two anteriorly converging carinae. Metasternum convex, strongly and regularly punctured, forming some regular striae converging towards the center. Disc of metasternum not punctured. Femoral lines reaching three fourth of first abdominal sternite. Tibiae and femora slender. Head finely and densely punctured. Pronotal puncturation of the same size but sparser; distance between points equal to 1–2 diameters. Elytral points bigger and superficial; distance between points equal to 1–2 diameters. Male and female genitalia as in figs 17–20.

Length: 2.00–2.25 mm.

##### *Pseudoscymnus ocelliferus* n. sp. (figs 21–26)

Holotype (♂): Nepal, Ilam Distr., Mai Pokhari, 2100–2200 m, *Castanopsis* forest remnants, 9–10. IV. 1988, leg. MARTENS & SCHAWALLER (SMNS).

Description: Oval, moderately convex, pubescent. Head and pronotum yellow-red. Elytra black with yellow apex and a yellow discal spot on each elytron, ex-

tended to the suture. In the center of this spot a black oval spot. Propleura and prosternum yellow-red; meso- and metasternum black; abdomen yellow-red, with the first two sternites obscured in the middle. Antennae, mouthparts and legs yellow. Frons square, interocular distance equal to 1.3 times the ocular diameter. Pronotum at its base 1.75 times as large as head. Elytra in the middle 1.2 times wider than pronotum, gently rounded at the sides. Prosternal process short, with two marginal, subparallel carinae, delimiting an unpunctured surface with some transverse wrinkles; metasternum moderately convex. Femoral lines of the *Diomus*-type, reaching two thirds of the length of first abdominal sternite, surrounding area coarsely punctured and opaque at the base, unpunctured and shining at the apical third. Head with puncturation small, deep, regular. Puncturation of pronotum superficial, distance between points equal to 2–4 diameters. Elytral puncturation three or four times bigger than pronotal one; distance between points 1–3 diameters. Puncturation of metasternum rare, superficial, regular. Male genitalia as in figs 23–26.

Length: 1.90 mm.

*Pseudoscymnus luteoniger* n. sp. (figs 27–32)

Holotype (♂): Nepal, Sankhua Sabha Distr., Arun valley bottom betw. Hedangna and Num, subtropical forest, 950–1000 m, 6–8. VI. 1988, leg. MARTENS & SCHAWALLER (SMNS).

Description: Body round-oval, moderately convex, covered with long, yellow-gray pubescence, directed backwards. Head black, pronotum yellow, elytra black with apex yellow-red. Pro- and mesosternum yellow; metasternum black. Abdomen yellow with the first segment obscured. Frons as long as wide; interocular distance equal to two transverse ocular diameters. Pronotum 1.76 times as large as the head, 2.5 times as wide as long, lateral margins arcuated, basal margin bisinuous. Elytra 1.5 times as large as pronotum, gently arcuated on the margins. Prosternal process as long as wide, with two marginal carinae feebly convergent anteriorly. Femoral lines of first abdominal sternite complete, reaching four-fifths of the length, surrounding area very finely punctured on the basal third; the remaining area unpunctured and shining. Head and pronotum with fine, sparse and superficial puncturation; distance between points equal to five diameters. Elytral puncturation three times larger than on pronotum; distance between points equal to three–four diameters. Male genitalia as in figs 29–32.

Length: 1.70 mm; width 0.90 mm.

*Pseudoscymnus nepalicus* Miyatake, 1985

MIYATAKE, 1985, p. 7.

Material (1 ex.) – SMNS: Taplejung Distr., Kabeli Khola, 900–1250 m, forest remnants, 1. IX. 1983, leg. MARTENS & DAAMS, 1 ex.

Distribution: Nepal.

*Scymnus* (s. str.) *nubilus* Mulsant, 1850

MADER, 1955, p. 932.

BIELAWSKI, 1972, *Scymnus nubilus*, p. 293, misspelling.

MIYATAKE, 1985, *Scymnus nubilus*, p. 9, misspelling.



Material (5 ex.) – SMNS: Dhading Distr., Ankhukhola, Ankhukhola Sangu to Sellentar, cultural land, 530–750 m, 26. VII. 1983, leg. MARTENS & SCHAWALLER, 2 ex. – MHNG: Kathmandu Distr., Phulchoki, 2500 m, 28–30. IV. 84, 2 ex. – Kathmandu Distr., Phulchoki 2550 m, 29. IV. 84, leg. LÖBL & SMETANA, 1 ex.

Distribution: Nepal, India, Burma, Asia Minor.

*Scymnus* (s. str.) *trisulicus* n. sp. (figs 33–39)

Holotype (♂): Nepal, Trisuli valley near Dunche, 2000 m, 27. IV. 73, leg. MARTENS (SMNS).

Description: Body elongate oval, pronotum red, elytra black with apical sixth red; prosternum and propleura red, meso- and metasternum black; abdomen red with basal part of first sternite obscured. Legs red with basal part of femora obscured. Frons square, interocular distance equal to 1.5 diameters of an eye. Elytra with reflected lateral margins. Prosternal carinae subparallel, meso- and metasternum convex with sparse and superficial punctures. Head and pronotum with fine, regular, sparse punctures; intervals between points equal to 2.0–2.5 diameters. Elytra with strong puncturation; interval equal to 1.5–2.0 diameters. Femoral lines incomplete and extending to three fourths of the segment length. Male genitalia as in figs 37–39.

Length: 1.92 mm, width 1.26 mm.

*Scymnus* (s. str.) *sufflavus* n. sp. (figs 40–44)

Holotype (♂): Nepal, Sankhua Sabha Distr., Pahakhola, cultural land, bushes, 2250 m, 30–31. V. 1988, leg. MARTENS & SCHAWALLER (SMNS).

Description: Body elongate oval, depressed, pubescent, entirely yellow, including mouth-parts, antennae and legs; eyes black. Frons with a shape of a vertical rectangle, interocular distance 1.5 times as an ocular diameter. Pronotum at the basis twice as wide as the head, of trapezoidal form, with lateral margins moderately arcuate. Elytra with feeble humeral callus, sub-parallel margins from the base to apical third. Prosternum with two converging carinae; metasternum convex, with a longitudinal, obscured median groove. Elytral epipleura reaching the half of first abdominal sternite. Incomplete metacoxal arch reaching three fourths of the length of 1st abdominal sternite. 5th male sternite neither incavate nor impressed. Head and pronotum with small and superficial punctures, separated by a distance of 2–4 diameters; elytral puncturation sparser, irregular, distance between points equal to 3–5 diameters. Male genitalia as in figs 41–44.

Length: 2.40 mm.

*Scymnus* (s. str.) *tristigmaticus* Gorhan, 1895

Material (1 ex.) – SMNS: Ilam Distr., Bililate near Ilam, 1330 m, remnant trees around spring, 8. IV. 1988, leg. MARTENS & SCHAWALLER, 1 ex.

Distribution: Burma. New for Nepal.

*Scymnus (Pullus) besucheti* Canepari, 1986

CANEPARI, 1986, p. 23.

Material (13 ex.) – SMNS: Sankhua Sabha Distr., Arun valley, Chichila, *Quercus* forest, bushes, 1900–2000 m, 18–20. VI. 1988 leg. MARTENS & SCHAWALLER, 1 ex. – MHNG: Kathmandu valley, Phulchoki, 2600 m, 20. IV. 82, leg. SMETANA, 1 ex. – Khandbari Distr., forest NE Kuwapani, 2450–2600 m, 28. III.–15. IV. 84, leg. SMETANA, 5 ex. – Khandbari Distr., forest above Ahale, 2400 m, 25. III. 82 leg. SMETANA, 5 ex. – Khandbari Distr., above Sheduwa, 3000 m, 31. III.–1. IV. 82, leg. SMETANA, 1 ex.

Distribution: India (western Bengal). New for Nepal.

*Scymnus (Pullus) posticalis* Sicard, 1912

KAPUR, 1973, p. 458.

PANG, 1984, p. 253.

PANG & GORDON, 1984, p. 131.

Material (12 ex.) – SMNS: Kathmandu valley, Ganabahal and Baneshwar, 1350 m, 20–24. IX. 1983, leg. MARTENS & DAAMS, 1 ex. – Dhading Distr., W Samari Banjyang/Topal Khola, 1000–1200 m, 23. VII. 1983, leg. MARTENS & SCHAWALLER, 4 ex. – Dhading Distr., Ankhu Khola, Ankhu Sangu, 650 m, 24. VII. 1983, forest remnants, leg. MARTENS & SCHAWALLER, 1 ex. – Gorkha Distr., Arughat to Suteo, 600–700 m, 27. VII. 1983, leg. MARTENS & SCHAWALLER, 1 ex. – Gorkha Distr., Buri Gandaki, Labubesi-Gorlabesi, 900–1000 m, broad-leaved forest, 29. VII. 1983, leg. MARTENS & SCHAWALLER, 1 ex. – Gorkha/Dhading Distr., Buri Gandaki, Jagat to opposite Panshing, 1300–1650 m, cultural land, 31. VII. 1983, leg. MARTENS & SCHAWALLER, 1 ex. – Gorkha Distr., Darondi Khola below Barpak to Doreni, 1100–900 m, 12. VIII. 1983, leg. MARTENS & SCHAWALLER, 1 ex. – Terhatum Distr., betw. Dumhan and Nessum, 800–1200 m, 16. IX. 1983, leg. MARTENS & DAAMS, 1 ex. – Sankhua Sabha Distr., below Karmarang to Hedangna, tree-rich cultural land, 950–1350 m, 5. VI. 1988, leg. MARTENS & SCHAWALLER, 1 ex.

Remarks: The pronotal colouration is rather different from eastern and southern specimens as already illustrated by KAPUR (1973), but the male genitalia agree well with the drawing of PANG (1984).

Distribution: China, Japan, Burma, India (Uttar Pradesh, western Bengal, Sikkim), Nepal.

*Scymnus (Pullus) nepalensis* Bielawski, 1971

BIELAWSKI, 1971, p. 3.

Material (31 ex.) – SMNS: Dhading Distr., W Samari Banjyang/Topal Khola, 1000–1200 m, 23. VII. 1983, leg. MARTENS & SCHAWALLER, 1 ex. – Dhading Distr., Thorpu to Kordunje, 1300–1400 m, 24. VII. 1983, leg. MARTENS & SCHAWALLER, 1 ex. – Gorkha Distr., Buri Gandaki, Labubesi-Gorlabesi, 900–1000 m, broadleaved forest, 29. VII. 1983, leg. MARTENS & SCHAWALLER, 1 ex. – Gorkha/Dhading Distr., Buri Gandaki, Jagat to opposite Panshing, 1300–1650 m, 31. VII. 1983, leg. MARTENS & SCHAWALLER, 4 ex. – Dhading Distr., Buri Gandaki, opposite Panshing, 1750 m, bamboo bushes, 31. VII. 1983, leg. MARTENS & SCHAWALLER, 2 ex. – Ilam Distr., betw. Ilam and Parbate, 1250–1450 m, 23. VIII. 1983, leg. MARTENS & DAAMS, 5 ex. – Panchthar Distr., betw. Deorali, Puspati and Sheldoti, 2800–2500 m, 28. VIII. 1983, leg. MARTENS & DAAMS, 1 ex. – Panchthar Distr., betw. Hinwa and Elluwa Khola, Yektis, 1200–1400 m, 30. VIII. 1983, leg. MARTENS & DAAMS, 2 ex. – Taplejung Distr., Tamur Khola betw. Chirua and Mitilung, 1200–950 m, 14. IX. 1983, leg. MARTENS & DAAMS, 1 ex. – Terhatum Distr., Dumhan to Nessum, 800–1200 m, tree-rich cultural land, 16. IX. 1983, leg. MARTENS & DAAMS, 1 ex. – Taplejung Distr., Yamputhin, cultural land, open forest, 1650–1800 m, 26. IV.–1. V. 1988, leg. MARTENS & SCHAWALLER, 1 ex. – Sankhua Sabha Distr., Pahakhola, cultural land, bushes, 2250 m, 30–31. V. 1988, leg. MARTENS & SCHAWALLER, 1 ex.

– Sankhua Sabha Distr., Arun valley betw. Hurure and Chichila, tree-rich cultural land, 2000 m, 17. VI. 1988, leg. MARTENS & SCHAWALLER, 1 ex. – MHNG: Prov. Bagmati, Burlang Bhanjyang, 2600 m, 5. IV. 81, leg. LÖBL & SMETANA, 5 ex. – Tokapani, 1650–1850 m, 5. X. 77, leg. DEHARVENG, 2 ex. – Khandbari Distr., forest above Ahale, 2300 m, 26. III. 82 leg. SMETANA, 2 ex. – Kosi, Induwa Kola, 2000 m, 16. IV. 84, leg. LÖBL & SMETANA, 1 ex.

Distribution: Nepal.

*Scymnus (Pullus) bourdilloni* Kapur, 1958

KAPUR, 1958, p. 335.

BIELAWSKI, 1971, p. 3.

Material (3 ex.) – SMNS: Ilam Distr., 5 km N Sanishare, feet of Siwalik Mts, 270–300 m, mixed *Shorea* forest, 3–5. IV. 1988, leg. MARTENS & SCHAWALLER, 1 ex. – Taplejung Distr., Yamputhin, cultural land, open forest, 1650–1800 m, 26. IV.–1. V. 1988, leg. MARTENS & SCHAWALLER, 1 ex. – MHNG: Prov. Bagmati, Malemchi, 2800 m, 14. IV. 81, leg. LÖBL & SMETANA, 1 ex.

Remarks: One specimen belongs to the typical form and the others to the “variety b” of KAPUR.

Distribution: Nepal, Sikkim.

*Scymnus (Pullus) victoris* Motschoulsky, 1858

MADER, 1955, *Sc. (Pullus) victoris* Cr., p. 917.

IABLOKOFF-KHNZORIAN, 1972, p. 166.

Material (3 ex.) – SMNS: Dhankuta Distr., Tamur Khola, mouth of Leonti Khola, 300 m, 20. IX. 1983, leg. MARTENS & DAAMS, 2 ex. – Ilam Distr., 5 km N Sanishare, feet of Siwalik Mts, 270–300 m, mixed *Shorea* forest, 3–5. IV. 1988, leg. MARTENS & SCHAWALLER, 1 ex.

Remarks: This species, originally described by MOTSCHOULSKY from Ceylon, was forgotten or misidentified by subsequent authors. Its type, according with IABLOKOFF-KHNZORIAN, is lost. I will treat its diagnosis in a future publication.

Distribution: India, Nicobare Islands, Himalayas, Sri Lanka, Philippines.

*Scymnus (Pullus) mellinus* n. sp. (figs 45–50)

Holotype (♂): Nepal, Prov. Bagmati, Pokhare NE Barabhise, 2700 m, leg. LÖBL & SMETANA (MHNG).

Paratypes (10 ex.): Same data as holotype, 1 ex. – Prov. Bagmati, Dobate, Ridge NE Barabhise, 2700 m, 2. V. 81, leg. LÖBL & SMETANA, 1 ex. (MHNG, CC). – Ilam Distr., Mai Pokhari, 2100 m, 31. III.–1. IV. 1980, leg. MARTENS & AUSOBSKY, 1 ex. – Ilam Distr., Mai Pokhari, 2150–2250 m, 23–25. VIII. 1983, leg. MARTENS & DAAMS, 1 ex. – Ilam Distr., Mai Pokhari, 2100–2200 m, *Castanopsis* forest remnants, 9–10. IV. 1988, leg. MARTENS & SCHAWALLER, 4 ex. – Sankhua Sabha Distr., Pahakhola, cultural land, bushes, 2250 m, 30–31. V. 1988, leg. MARTENS & SCHAWALLER, 1 ex. – Sankhua Sabha Distr., above Pahakhola, *Quercus semecarpifolia-Rhododendron*, 2600–2800 m, 3. VI. 1988, leg. MARTENS & SCHAWALLER, 1 ex. (SMNS, CC).

Description: Body elongate oval with subparallel sides, convex. General colouration light brown; head and pronotum disc obscured. Ventral part dark brown to black. Antennae, mouthparts and tibiae light brown, femora from light brown to black. Pubescence on the elytra tortuous, forming a double S. Frons in a shape of a rectangle horizontally disposed. Interocular distance equal to 2.5 eye diameters. Puncturation on the head and pronotum deep, dense, regular; distance between points equal to 0.75 diameters. Elytral points rough, irregular; distance



between points equal to 2 diameters. Three or four short lines of parascutellar bigger points disposed parallel to suture. Prosternum with two subparallel carinae. Mesosternum feebly incavated anteriorly, with strong and dense puncturation. Metasternum convex, with puncturation dense on the sides, rare and superficial on the disc. Elytral epipleura gradually narrowing as far as the anterior margin of first abdominal sternite and from here abruptly converging and ending at the third sternite. Metacoxal lines on the first abdominal sternum reaching three fourth of the length and surrounding an area provided of strong and regular puncturation on the basis.

Length: 2.25–2.85 mm, width 1.80–2.10 mm.

Variation: The colouration of head and pronotum varies from light brown to black.

*Scymnus (Pullus) hepaticus* n. sp. (figs 51–56)

Holotype (♂): Nepal, Kathmandu valley, Phulchoki, 2550 m, 29. IV. 84, leg. LÖBL & SMETANA (MHNG).

Paratypes (33 ex.): Khandbari Distr., forest NE Kuwapani, 2500 m, 28. III. 82, leg. SMETANA, 3 ex. – Khandbari Distr., “Bakan” W Tashigaon, 3200 m, 5. IV. 82, leg. SMETANA, 1 ex. – Bagmati, Malemchi, 2800 m, 14. IV. 81, leg. LÖBL & SMETANA, 3 ex. – Kosi, range S Mangsingma, 2800 m, 8. IV. 84 leg. LÖBL & SMETANA, 1 ex. – Kosi, forest S Mangsingma, 2200–2600 m, 11–13. IV. 84 leg. LÖBL & SMETANA, 4 ex. – Kosi, Induwa Khola, 2000 m, 16. IV. 84, leg. LÖBL & SMETANA, 2 ex. – Kosi, NE Mangmaya, 2300 m, 6. IV. 84, leg. LÖBL & SMETANA, 2 ex. – Bagmati, Pokhare NE Barahbise, 2700 m, 3. V. 81, leg. LÖBL & SMETANA, 1 ex. – idem, 7. V. 81, 1 ex. – Kathmandu valley, Phulchoki, 2550 m, 29. IV. 84, leg. LÖBL & SMETANA, 1 ex. – Khandbari Distr., above Tashigaon, 3100 m, 8. IV. 82, leg. SMETANA, 1 ex. (MHNG, CC). – Ilam Distr., Mai Pokhari, 2100–2300 m, 25–27. III. 1980, leg. MARTENS & AUSOBSKY, 1 ex. – Ilam Distr., N Mai Pokhari, Gitang Khola, 2500–2600 m, 28–31. III. 1980, leg. MARTENS & AUSOBSKY, 1 ex. – Parbat Distr., Chitre, 2400 m, bushes, 4. V. 1980, leg. MARTENS & AUSOBSKY, 1 ex. – Ilam Distr., Mai Pokhari, 2150–2250 m, 23–25. VIII. 1983, leg. MARTENS & DAAMS, 1 ex. – Ilam Distr. betw. Mai Pokhari, Mai Majuwa and Gitang Khola, 2100–1800 m, 26. VIII. 1983, leg. MARTENS & DAAMS, 1 ex. – Taplejung Distr., Kabeli Khola above Yamputhin, 2100–1700 m, 3. IX. 1983, leg. MARTENS & DAAMS, 1 ex. – Terhatum Distr., ascent to Tinjura Dara, broadleaved forest, 1950–2250 m, 16. IX. 1983, leg. MARTENS & DAAMS, 1 ex. – Panchthar Distr., Dhorpar Kharka, mature *Rhododendron-Lithocarpus* forest, 2700 m, 13–16. IV. 1988, leg. MARTENS & SCHAWALLER, 1 ex. – Taplejung Distr., Yamputhin, ascent to pass Deorali, 2100–2600 m, cultural land, bushes, 16. V. 1988, leg. MARTENS & SCHAWALLER, 1 ex. – Taplejung Distr., upper Tamur valley from Lungthung/waterfall to bamboo bridge, 1800–2150 m, open forest, bushes, 19. V. 1988, leg. MARTENS & SCHAWALLER, 1 ex. – Sankhua Sabha Distr., Pahakhola, cultural land, bushes, 2250 m, 30–31. V. 1988, leg. MARTENS & SCHAWALLER, 1 ex. – Sankhua Sabha Distr., above Pahakhola, *Quercus semecarpifolia-Rhododendron*, 2600–2800 m, 3. VI. 1988, leg. MARTENS & SCHAWALLER, 2 ex. – Sankhua Sabha Distr., Arun valley betw. Mure and Hurure, mixed broadleaved forest, 2050–2150 m, 9–17. VI. 1988, leg. MARTENS & SCHAWALLER, 1 ex. (SMNS, CC).

Description: Body round oval, convex, pubescent. Superior part of the body reddish-brown, covered with brown rounded spots; ventral part brown. Mouthparts and antennae yellow; legs light brown to yellow. Pubescence fairly long, white-yellow, directed backwards and parallel to suture. Frons in shape of a horizontal rectangle, interocular distance equal to two transverse diameters of the eye. Pronotum at the basis twice as wide as the head, sides rectilinear, basis bisinuated with median parts lightly protruding in front of scutellum. Elytra twice as long and 1.2 times wider than pronotum. Prosternum with two anteriorly converging carinae; meso- and metasternum densely punctured; punctures deep on the sides, superficial on the disc. Elytral epipleura ending at the second abdominal sternite. Metacoxal lines extending



to seven eighths of first abdominal sternite; they surround an area punctured on the three basal fourths, with the apical fourth unpunctured and shining. Head puncturation dense, distance between points equal to half a diameter; pronotum puncturation equal to head one but sparser, distance between points equal to 1 diameter; elytral puncturation bigger and rare, distance between points equal to 2 diameters.

Length: 1.62–1.95 mm, width 1.05–1.29 mm.

*Scymnus (Pullus) godavariensis* Miyatake, 1985

Material (1 ex.) – SMNS: Gorkha Distr., Darondi Khola between Doreni and Motar, 900–750 m, 13. VIII. 1983, leg. MARTENS & SCHAWALLER, 1 ex.

Remarks: I attach this female tentatively to this species, corresponding to the description of MIYATAKE.

Distribution: Nepal.

*Scymnus (Pullus) sodalis* Weise, 1923

Material (1 ex.) – SMNS: Taplejung Distr., Yamputhin, 1800 m, cultural land, open forest, 26. IV.–1. V. 1988, leg. MARTENS & SCHAWALLER, 1 ex.

Distribution: Taiwan. New for Nepal.

*Scymnus (Pullus) rufoniger* n. sp. (figs 57–63)

Holotype (♂): Nepal, Terhatum Distr., above Nessim, 1350–1850 m, tree-rich cultural land, 16. IX. 1983, leg. MARTENS & DAAMS (SMNS).

Description: Body elongate oval with subparallel sides, moderately convex. Head, pronotum and posterior half of the elytra red, anterior part of the elytra black. Prosternum yellow-red, meso- and metasternum black, abdomen yellow-red with basal part of first sternite obscured; pubescence yellow-gray. Mouthparts and legs yellow-red. Puncturation of head and pronotum fine and superficial, of the elytra very fine, irregular, almost indistinguishable. Three short parascutellar lines of row punctures. Frons in a shape of a vertical rectangulum; interocular distance equal to an ocular diameter. Prosternal carinae converging anteriorly, metasternum convex with big and superficial punctures. Metacoxal lines of first abdominal sternite extending for about three fourths of the length, surrounding area with no puncturation but with a microreticulation. Male genitalia as in figs 61–63.

Length: 1.75 mm, width 1.20 mm.

*Scymnus (Pullus) schawalleri* n. sp. (figs 64–71)

Holotype (♂): Nepal, Panchthar Distr., upper Mai Majuwa Khola, Dhorpar Kharka, *Rhododendron-Lithocarpus*, 2700 m, 27–28. VIII. 1983, leg. MARTENS & DAAMS (SMNS).

Description: Body elongate oval with subparallel sides, convex. General colouration black, head red with basis black, pronotum red with a median black spot, elytra black with apex red, ventral part black, legs dark-yellow; pubescence whitish-gray. Frons in a shape of a vertical rectangle; interocular distance equal to 1.2 diameters of an eye. Head and pronotum with fine, regular, superficial puncturation; distance between points equal to 2 diameters. Elytral puncturation stronger, superficial on the disc, deeper on the sides; distance between points equal to 2 di-

ameters. Prosternum with two anteriorly converging carinae, meso- and metasternum convex, with superficial points. Metacoxal lines complete and not reaching the anterior border of the second abdominal sternite; surrounding area with fine and regular points.

Length: 1.50 mm, width 1.00 mm.

*Scymnus (Pullus) martensi* n. sp. (figs 72–81)

Holotype (♂): Nepal, Terhatum Distr., above Nessum, 1750 m, tree-rich cultural land, 16. IX. 1983, leg. MARTENS & DAAMS (SMNS).

Description: Body oval, moderately convex. General colouration uniform yellowish-brown. Frons square, interocular distance equal to 1.7 diameters of an eye. Prosternum with two feebly anteriorly converging carinae; meso- and metasternum convex with regular, sparse and strong punctures. Elytral epipleura ending at the level of third abdominal segment. Metacoxal lines on the first abdominal sternite reaching three fourths of its length and surrounding an area with fine irregular punctures on the basis. Male genitalia as in figs 76–81.

Length: 1.50 mm, width 1.05 mm.

*Scymnus (Pullus) exilis* n. sp. (figs 82–86)

Holotype (♂): Nepal, Kaski Distr., SW Hyangja, Mahendra cave and Pokhara, 1000–1200 m, 11. V. 1980, leg. MARTENS & AUSOBSKY (SMNS).

Description: Elongate oval, moderately convex, pubescent. Head red, pronotum red with a semicircular spot covering the central part of the base. Elytra black with red apex extended over one seventh of their length. Antennae, mouthparts and tibiae red; femora black with distal apex red. Prosternum black with propleurae red, meso- and metasternum black. Frons in a vertical rectangle; interocular distance equal to 1.8 times the transverse diameter of the eye. Pronotum 1.6 times as wide as the head, twice as wide as long, sides feebly arcuated. Elytra subparallel from the base to the apical fifth, then arcuated to the apex. Elytral punctation deep, close, additional small punctures confusely mixed with others double in diameter. Prosternum with two subparallel carinae, feebly convergent anteriorly. Metasternum on the disc with sparse and superficial punctures. Elytral epipleurae reaching the second abdominal sternite. Metacoxal lines reaching the half of first abdominal sternite, surrounding an area very closely punctured at the base, unpunctured and shining on the apex. Fifth sternite of the male incavated and feebly impressed. Male genitalia as in figs 83–86.

Length: 2.20 mm; width 1.20 mm.

*Scymnus (Pullus) fruticis* n. sp. (figs 87–91)

Holotype (♂): Nepal, Sankhua Sabha Distr., between Pahakhola and Karmarang, open forest, bushes, 2300–1800 m, 4. VI. 1988, leg. MARTENS & SCHAWALLER (SMNS).

Description: Body elongate oval, with parallel sides, depressed, pubescent. Head and pronotum red, elytra black with the apical fifth red. Prosternum red, meso- and metasternum black. Abdomen brown with the terminal segments cleared. Antennae, mouthparts, legs yellow. Frons as long as wide; interocular distance 1.5 times the transverse diameter of the eye. Prosternum with two anteriorly converging

carinae and prosternal process rounded at the posterior part; metasternum convex. Metacoxal lines complete, reaching two thirds of the length of first abdominal sternite, surrounding area densely and roughly punctured, except on the apex where it is unpunctured. Fifth abdominal segment strongly emarginated and feebly impressed at apex. Femora and tibiae slender. Head and pronotum with regular puncturation; distance between points equal to 4–5 diameters of a point. Elytra with points twice as big; space between points equal to 3–4 diameters; metasternum sparsely punctured on the disc, densely and roughly on the sides. Male genitalia as in figs 88–91.

Length: 1.80 mm.

*Scymnus (Pullus) lucicolus* n. sp. (figs 109–113)

Holotype (♂): Nepal, Panchthar Distr., Paniporua, mixed broadleaved forest, 2300 m, 16–20. IV. 1988, leg. MARTENS & SCHAWALLER (SMNS).

Description: Body elongate oval, depressed, pubescent. Head and pronotum red, elytra black with the apical fifth and an oval spot with undefined margins on the disc red. Prosternum yellow, metasternum black, abdomen yellow with the first two segments obscured. Antennae, mouthparts and legs yellow. Frons 1.2 times as long as wide; interocular distance 1.5 times the transverse diameter of the eye. Elytral epipleurae reaching the first abdominal sternite. Metacoxal lines reaching three fourths of the length of first abdominal sternite, surrounding area covered with big points, dense at the base, becoming sparse towards the apex. Puncturation on the head very small and sparse, on the pronotum of the same dimensions as on the head, but denser; space between points equal to 3–6 diameters on the disc, sparser on the sides, on the elytra bigger and denser than on the pronotum; space between points equal to 3–4 diameters. Two periscutellar lines of row points directed obliquely and externally. Metasternum densely and uniformly punctured. Male genitalia as in figs 110–113.

Length: 2.00 mm, width 1.30 mm.

*Scymnus (Pullus) kosianus* n. sp. (figs 92–95)

Holotype (♂): Nepal, Kosi, Arun valley, Num, 1100 m, 21. IV. 84, leg. LÖBL & SMETANA (MHNG).

Paratype (1 ex.): Same data as holotype, 1 ex. (CC).

Description: Body round oval, convex, pubescent. Head red; pronotum red with a black, large, semicircular basal spot, almost reaching the anterior margin, evanescent on its borders. Elytra black with red apex, indistinct on its anterior border. Prosternum black on its median part, red on the sides; meso- and metasternum black; elytral epipleura reddish black. Abdomen red with the first two sternites obscured. Antennae, mouthparts and legs red. Frons as long as wide, twice the transverse diameter of the eye. Antennae as long as the frontal width. Antennal club with four articles, third article longer. Prosternum with two regularly inner converging carinae; metasternum very convex. Elytral epipleuron reaching the third abdominal sternite. Metacoxal lines extended for the two thirds of first sternite, surrounding an area deeply and thickly punctured in the four basal fifths. Head superficially and sparsely punctate, distance between points equal to 2.0–3.5 diameters. Pronotum with superficial points two times larger than those of the head, distance between

points equal to 1–3 diameters. Elytra with points a little larger than those of pronotum, distance between points equal to 1.0–3.5 diameters; two lines of row points on the parasutural region. Meso- and metasternum strongly, densely and deeply punctured. Male genitalia as in figs 93–95.

Length: 2.20–2.30 mm.

*Scymnus (Pullus) suturaloides* n. sp. (figs 96–99)

Holotype (♂): Nepal, Bagmati Prov., below Thare Pati, 3300 m, 10. IV. 81, leg. LÖBL & SMETANA (MHNG).

Paratype (1 ex.): Same data as holotype, 1 ex. (CC).

Description: Body elongate oval, convex, pubescent. General colouration black; one red, oval spot on the disc of each elytron with undefined margins, covering the median third of elytra. Maxillar palps, antennae, labium and tarsi brown; legs dark brown. Frons twice as wide as long; interocular distance equal to 2.8 times the transverse diameter of the eye. Pronotum subtrapezoidal, with sides gently curved, twice as wide as long. Elytra 4.3 times longer and 1.6 times wider than pronotum, with evident humeral callus, parallel sides as far as two thirds of their length, then gently curved to the apex. Prosternum with two strongly converging carinae, almost touching the anterior margin. Mesosternum coarsely punctured; metasternum with punctures sparse on the disc, dense on the sides. Elytral epipleuron ending at the second abdominal sternite. Metacoxal lines ending at two thirds of first abdominal sternite; they surround an area punctured in the two basal third, the apical third being unpunctured. Tibiae slender. Puncturation of the head and pronotum fine and dense, distance between points equal to 1.0–1.5 diameters of point; of the elytron double with a very small puncturation on the background with 10–12 irregular lines of big points extending to the apex. Pubescence on the elytron disposed in a double S. Male genitalia as in figs 97–99.

Length: 2.00–2.30 mm.

*Scymnus (Neopullus) fuscatus* Boheman, 1858

IABLOKOFF-KHNZORIAN, 1976, p. 377.

Material (1 ex.) – SMNS: Ilam Distr., 5 km N Sanishare, feet of Siwalik Mts, 270–300 m, mixed *Shorea* forest, 3–5. IV. 1988, leg. MARTENS & SCHAWALLER, 1 ex.

Distribution: Japan, Formosa, China, Philippines, Sunda Islands, India, Sri Lanka. New for Nepal.

*Scymnus (Orthoscymnus)* n. subg.

Diagnostic characters: Body round oval. Well developed prosternal wings; prosternum with two carinae. Antennae with eleven segments, tarsi with four segments. Metacoxal lines complete. Male genitalia: Sypho with a large and irregular basal capsule. Female genitalia: Genital plates disposed sub-horizontally.

Remarks: I include two species in this new subgenus for the shape of the sypho and of the female genital plates, different from the other species of *Scymnus*. On the other hand the external characters are those of the subgenus *Pullus*.

Type species: *smetanai* n. sp.



*Scymnus (Orthoscymnus) smetanai* n. sp. (figs 100–108)

Holotype (♂): Nepal, Khandbari Distr., forest above Ahale, 2300 m, 26. III. 82, leg. SMETANA (MHNG).

Paratypes (8 ex.): Same data as holotype, 1 ex. – Khandbari Distr., forest NE Kuwapani, 2500 m, 28. III. 82, leg. SMETANA, 1 ex. – Kosi, forest S Mangsingma, 2250 m, 12. IV. 84, leg. LÖBL & SMETANA, 6 ex. (MHNG, CC).

Description: Body round oval, covered with thin, long and rather rare pubescence. Superior part entirely reddish-brown; ventral part dark brown; epipleura yellow. Femora brown with apex cleared, tibiae yellow; palpi and antennae yellow. Eyes oval, vertically disposed, inner margin straight and outer margin more rounded. Frons as long as wide; interocular distance equal to 1.2 times the transverse diameter of the eye. Antennae 11-segmented, with two first antennomeres well distinguished in scape and pedicel, third about three times longer than wide; antennal club 4-segmented. Maxillar palps with last segment as wide as long. Pronotum sub-trapezoidal, 2.4 times wider than long; posterior margin rather bisinuous and gently protruding in front of scutellum; anterior corners sub-rectangular and rounded on the apex; posterior corners obtuse. Scutellum sub-triangular, seven times narrower than a single elytron. Elytra 3 times longer than pronotum, convex, well developed humeral calli, humeral angles rounded. Prosternum with two carinae feebly convergent; well developed lateral wings. Metasternum convex, without groove. Elytral epipleuron reaching the second abdominal segment. Abdomen 5-segmented; metacoxal lines complete and extending a little beyond the half of first sternite; last abdominal sternite not emarginated. Femora and tibiae slender. Puncturation of head and pronotum fine and regular, distance between points equal to 1.5 diameters of a point; of the elytra bigger than on pronotum, regular. Two or three short lines of periscutellar row points, disposed parallel to suture. Metasternum with sparse and superficial puncturation on the disc; points denser and deeper on the sides. Male genitalia: Siphon with large and sub-quadrangle basal capsule, basal fourth strongly curved; the remaining part straight and slender up to the apex. Female genitalia: Genital plates disposed subhorizontally, well developed bursa copulatrix, infundibulum elongated and in a knife-blade form, receptaculum seminis of conventional form.

Length: 1.26–1.35 mm; width 0.96–0.99 mm.

*Scymnus (Orthoscymnus) rhododendri* n. sp. (figs 114–120)

Holotype (♂): Nepal, Sankhua Sabha Distr., above Pahakhola, *Quercus semecarpifolia-Rhododendron*, 2600–2800 m, 3. VI. 1988, leg. MARTENS & SCHAWALLER (SMNS).

Description: Body elongate oval, moderately convex, pubescent. Head red, pronotum red with a black spot with undefined margins on the basis. Elytra black with apex feebly cleared. Mouthparts, antennae and legs yellow. Frons as long as wide, interocular distance 1.4 times the transverse diameter of the eye. Pronotum 1.3 times as wide as the head, 1.5 times as wide as long, trapezoidal, lateral margins feebly arcuated, inferior margin strongly arcuated. Elytra three times as long as pronotum, with lateral margins gently arcuated. Prosternal process twice as long as wide with marginal carinae converging anteriorly. Metacoxal lines complete, extended to the four fifths of first abdominal sternite, surrounding a strongly punctuated and matt area. Fifth abdominal sternite strongly incavated. Head and pronotum with

sparse and superficial puncturation. Elytral puncturation twice as large than pronotal; space between points equal to 3–4 diameter of a point. Meso- and metasternum sparsely and regularly punctuated. Male genitalia: Sypho with basal capsule large, almost twice as long as wide; body of the sypho strongly curved and slender on the proximal third, then gradually enlarged. Apex rounded and slightly folded, provided of a long membrane. Tegmen with paramere shorter than median lobe, with apical part, in lateral vision, very enlarged and rounded. Median lobe in lateral view curved backwards.

Length: 1.40 mm.

Remarks: I attach this species tentatively to the subgenus *Orthoscymnus* because of the shape of the basal capsule of the sypho. The morphology of the tegmen is similar as in *Scymnus* (*Orthoscymnus*) *smetanai* n. sp.

*Scymnus* (*Pullus*) sp.

In the collections MHNG and SMNS several additional single females of *Scymnus* (*Pullus*) are deposited, which are probably new species, but which are not described herein because of our scarce knowledge of the female genitalia of Oriental Scymniinae.

*Nephus* (s. str.) sp.

Material (1 ex.) – SMNS: Gorkha Distr., Chuling Khola, Djongshi Kharka, 3050–3400 m, 5. VIII. 1983, leg. MARTENS & SCHAWALLER.

Remarks: This species belongs to the *bipunctatus*-group, but cannot be identified with certainty.

*Stethorus* sp.

Material (1 ex.) – SMNS: Ilam Distr., 5 km N Sanishare, feet of Siwalik Mts, 270–300 m, mixed *Shorea* forest, 3–5. IV. 1988, leg. MARTENS & SCHAWALLER (SMNS).

*Hyperaspis marginaloides* n. sp. (figs 121–122)

Holotype (♀): Nepal, Lalitpur Distr., Phulchoki, 2700 m, 16. X. 83, leg. SMETANA & LÖBL (MHNG).

Description: Body round oval, convex, glabrous. General colouration black. A subtriangular red spot on each elytron, with the base on lateral margin and extended to the disc. Tibiae red, femora black, mouthparts brownish black. Scutellum eleven times smaller than pronotal basis, triangular, subequilateral. Prosteronum with two carinae strongly converging anteriorly before the base. Puncturation on the head sparse and superficial, distance between punctures equal to 4–5 diameters of a point; space among punctures microreticulated; pronotum strongly and deeply punctured; points twice as large as those of the head; distance between points equal to 2–3 diameters. Elytra with points a little smaller than those of pronotum; distance between points equal to 3–4 diameters. Female genitalia as in fig. 122.

Length: 3.00 mm; width 2.20 mm.

Derivatio nominis: The colour and the shape of the spots similar to *Scymnus marginalis* Rossi.

*Cryptogonus orbiculus* (Schönherr, 1808)

KAPUR, 1948, p. 90.

SASAJI, 1971, p. 195.

Material (4 ex.) – SMNS: Taplejung Distr., between Amjilesa and mouth of Gunsu Khola, 1850–1500 m, forest remnants, 13. IX. 1983, leg. MARTENS & DAAMS, 1 ex. – Panchthar Distr., descent to Hinwa Khola bridge, 1850–1200 m, cultural land, 20. IV. 1988, leg. MARTENS & SCHAWALLER, 1 ex. – Taplejung Distr., Tamur Khola, Chirua, 1200 m, 14. IX. 1983, leg. MARTENS & DAAMS, 1 ex. – Taplejung Distr., Yamputhin, cultural land, open forest, 1650–1800 m, 26. IV.–1. V. 1988, leg. MARTENS & SCHAWALLER, 1 ex.

Distribution: Japan, China, Formosa, Micronesia (Mariana), southeastern Asia, India, Sri Lanka, Nepal.

*Cryptogonus postmedialis* Kapur, 1948

KAPUR, 1948, p. 95.

Material (2 ex.) – SMNS: Parbat Distr., between Ghandrung and Landrung, 1400–1500 m, cultural land, 8. V. 1980, leg. MARTENS & AUSOBSKY, 1 ex. – Ilam Distr., betw. Ilam and Parbate, 1250–1450 m, 23. VIII. 1983, bushes, leg. MARTENS & DAAMS, 1 ex.

Distribution: India (Sikkim), Burma. New for Nepal.

*Cryptogonus ariasi* (Mulsant, 1853)

KAPUR, 1948, p. 102.

Material (8 ex.) – SMNS: Ilam Distr., 5 km N Sanishare, feet of Siwalik Mts, 270–300 m, mixed *Shorea* forest, 3–5. IV. 1988, leg. MARTENS & SCHAWALLER, 2 ex. – Taplejung Distr., Yamputhin, ascent to pass Deorali, 2100–2600 m, cultural land, bushes, 16. V. 1988, leg. MARTENS & SCHAWALLER, 1 ex. – Sankhua Sabha Distr., betw. Pahakhola and Karmarang, cultural land, bushes, 1800–1500 m, 4. VI. 1988, leg. MARTENS & SCHAWALLER, 3 ex. – Sankhua Sabha Distr., Arun valley, Chichila, *Quercus* forest, bushes near village, 1900–2000 m, 18–20. VI. 1988, leg. MARTENS & SCHAWALLER, 2 ex.

Distribution: India (Sikkim), Burma. New for Nepal.

*Cryptogonus bimaculatus* Kapur, 1948

KAPUR, 1948, p. 100.

Material (1 ex.) – SMNS: Tanhu Distr., Marsyandi, below Purkot, 600 m, 8. IV. 1980, leg. MARTENS & AUSOBSKY, 1 ex.

Distribution: India, Burma. New for Nepal.

*Cryptogonus complexus* Kapur, 1948

KAPUR, 1948, p. 110.

Material (2 ex.) – SMNS: Sankhua Sabha Distr., below Karmarang to Hedangna, tree-rich cultural land, 950–1350 m, 5. VI. 1988, leg. MARTENS & SCHAWALLER, 1 ex. – Sankhua Sabha Distr., Arun valley bottom betw. Hedangna and Num, subtropical forest, 950–1000 m, 6–8. VI. 1988, leg. MARTENS & SCHAWALLER, 1 ex.

Distribution: India (Assam, Patkai Mountains), Burma. New for Nepal.

*Cryptogonus nepalensis* Bielawski, 1972

BIELAWSKI, 1972, p. 294.

MIYATAKE, 1985, p. 11.

Material (2 ex.) – SMNS: Taplejung Distr., Yamputhin, cultural land, open forest, 1650–1800 m, 26. IV.–1. V. 1988, leg. MARTENS & SCHAWALLER, 1 ex. – MHNG: Kosi, forest S Mangsingma, 2300 m, 13. IV. 84, leg. LÖBL & SMETANA, 1 ex.

Remarks: In the specimen from Yamputhin the basal and the posterior spots are lacking; the male genitalia is of the same shape as in the nominal form.

Distribution: Nepal.

## 4.3. Subfamily Chilocorinae

*Telsimia* sp.

Material (1 ex.) – SMNS: Parbat Distr., betw. Ghandrung and Landrung, 1400–1500 m, cultural land, 8. V. 1980, leg. MARTENS & AUSOBSKY, 1 ex.

*Platynaspidius saundersi* (Crotch, 1874)

BIELAWSKI, 1959, p. 107.

MIYATAKE, 1985, p. 11.

Material (1 ex.) – SMNS: Gorkha Distr., Buri Gandaki, Suteo to Labubesi, 700–800 m, *Shorea*, 29. VII. 1983, leg. MARTENS & SCHAWALLER, 1 ex.

Distribution: India, Nepal, Afghanistan.

*Platynaspis ocellimaculata* Pang & Mao, 1979

PANG &amp; MAO, 1979, p. 95.

Material (2 ex.) – SMNS: Taplejung Distr., Kabeli Khola, 900–1250 m, tree-rich cultural land, 1. IX. 1983, leg. MARTENS & DAAMS, 1 ex. – Taplejung/Terhatum Distr., betw. Mitilung and Dumhan, 950–750 m, bushes, 15. IX. 1983, leg. MARTENS & DAAMS, 1 ex.

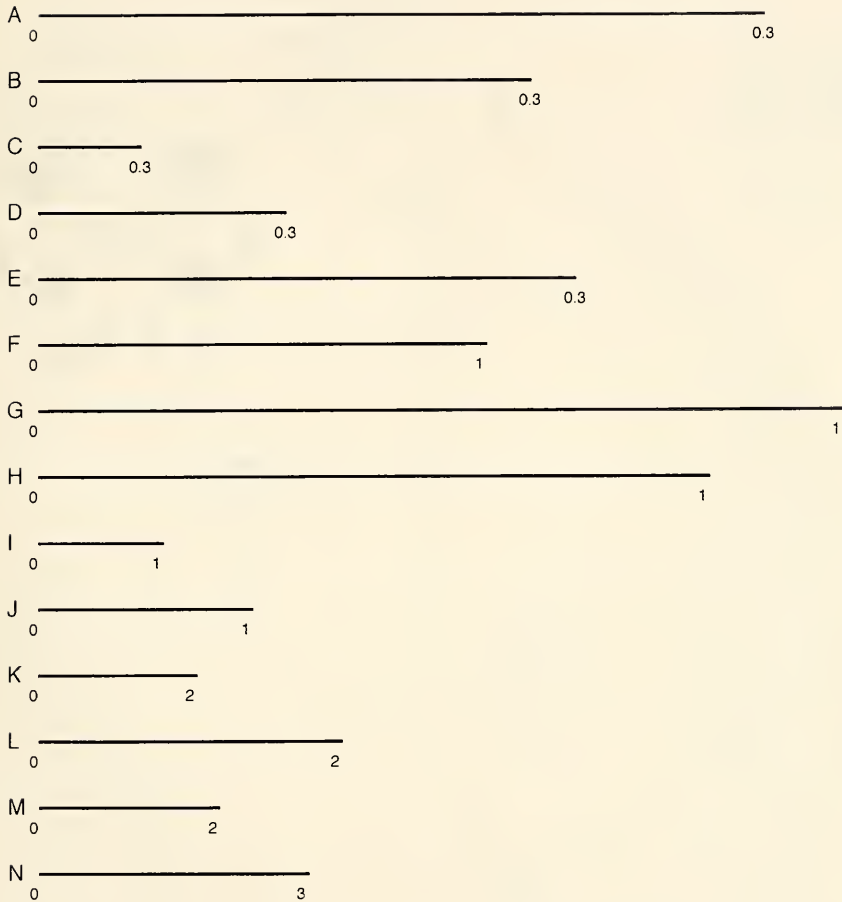
Distribution: China. New for Nepal.

*Platynaspis nepalensis* n. sp. (figs 123–125)

Holotype (♀): Nepal, Kosi, forest S Mansingma, 2200–2600 m; 11–13. IV. 1984, leg. LÖBL & SMETANA (MHNG).

Description: Oval, moderately convex, pubescent. Head, pronotum and elytra orange red; a basal, bilobed black spot on pronotum. Elytra on lateral margin with an irregular basal spot, a lateral marginal spot, a discal spot and a paraapical sutural spot black. Antennae, tibiae and mouthparts yellow red; femora brown. Prosternum yellow, meso- and metasternum brown. Pubescence gray, short, regular. Frons rectangular, interocular distance three times longer than ocular transverse diameter. Antennae as long as the longitudinal diameter of the eye; eyes pubescent. Prosternum with two carinae converging anteriorly before the base. Mesosternum subtrapezoidal with the principal side situated anteriorly and weakly incavated; metasternum flat, with a thin, longitudinal, median groove. First abdominal sternite with metacoxal lines complete, extending four fifths of its length and surrounding area punctured in





Scale bars for figs 1–147 [mm].

A 102, 103.

B 2, 3, 9, 10, 34, 35, 37, 38, 39, 48, 49, 50, 54, 75, 78, 79, 105, 106, 107, 108.

C 12, 59.

D 4, 5, 11, 13, 53, 55, 56, 76, 80, 81.

E 16, 20, 22, 24, 28, 32, 42, 60, 67, 69, 84, 89, 111, 125.

F 17, 18, 19, 23, 25, 26, 29, 30, 31, 41, 43, 44, 59, 61, 62, 63, 66, 68, 70, 71, 74, 83, 85, 86, 88, 90, 91, 110, 112, 113, 124, 128, 130, 131.

G 93, 94, 95, 97, 98, 99.

H 127, 129.

I 1, 6, 7, 100.

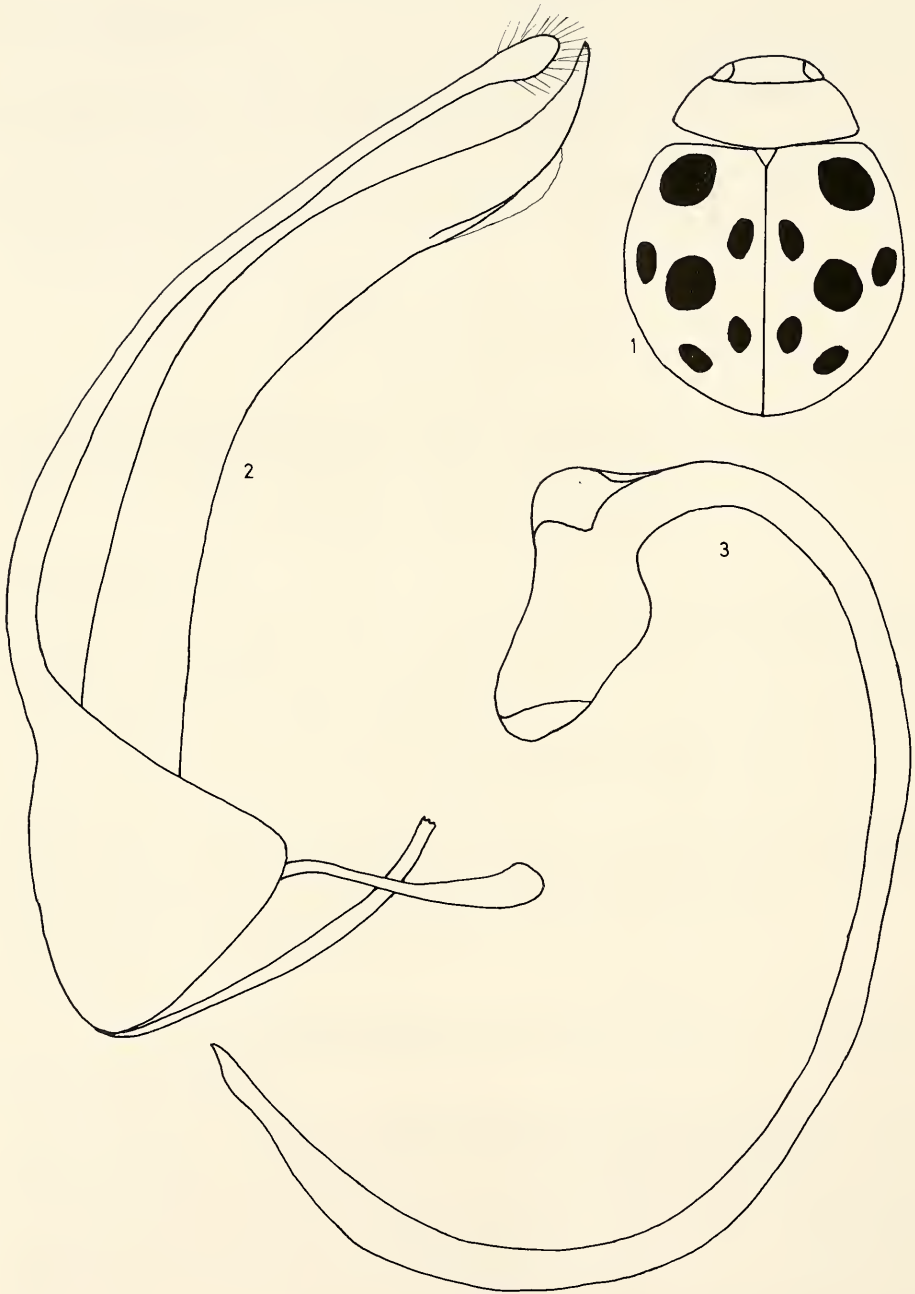
J 8.

K 15, 21, 27, 40, 132.

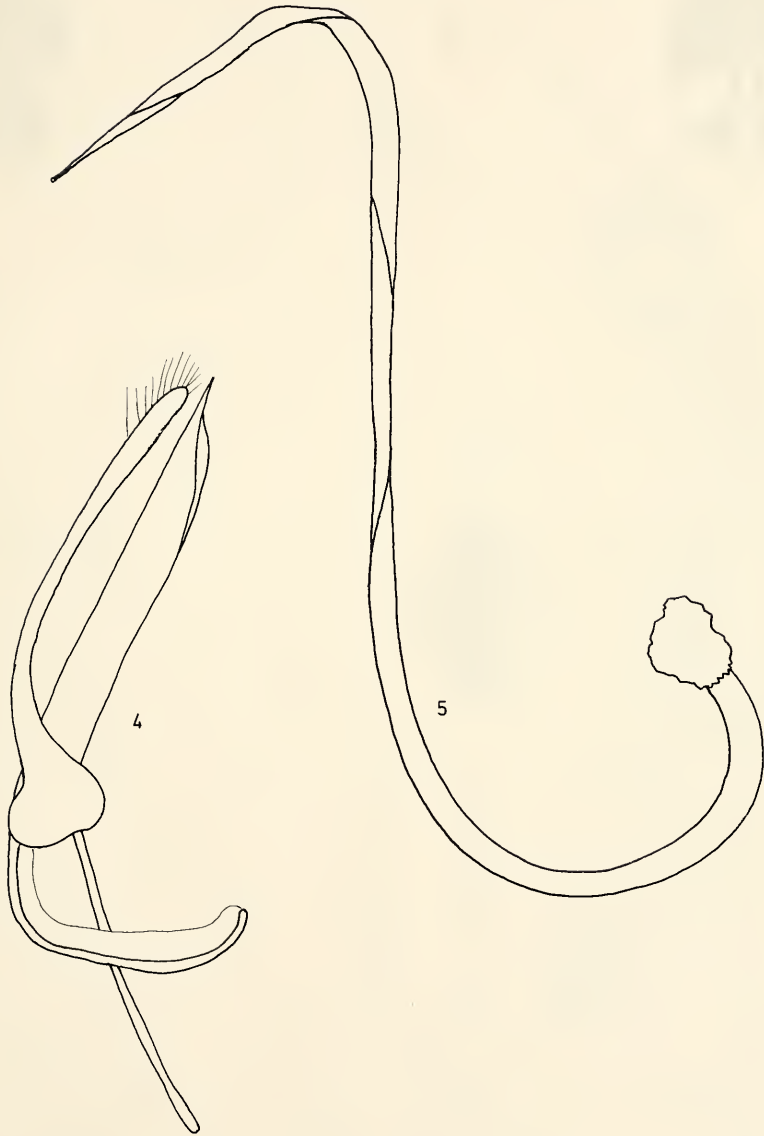
L 33, 45, 51, 57, 64, 72, 92, 96, 126.

M 82, 87, 109, 114.

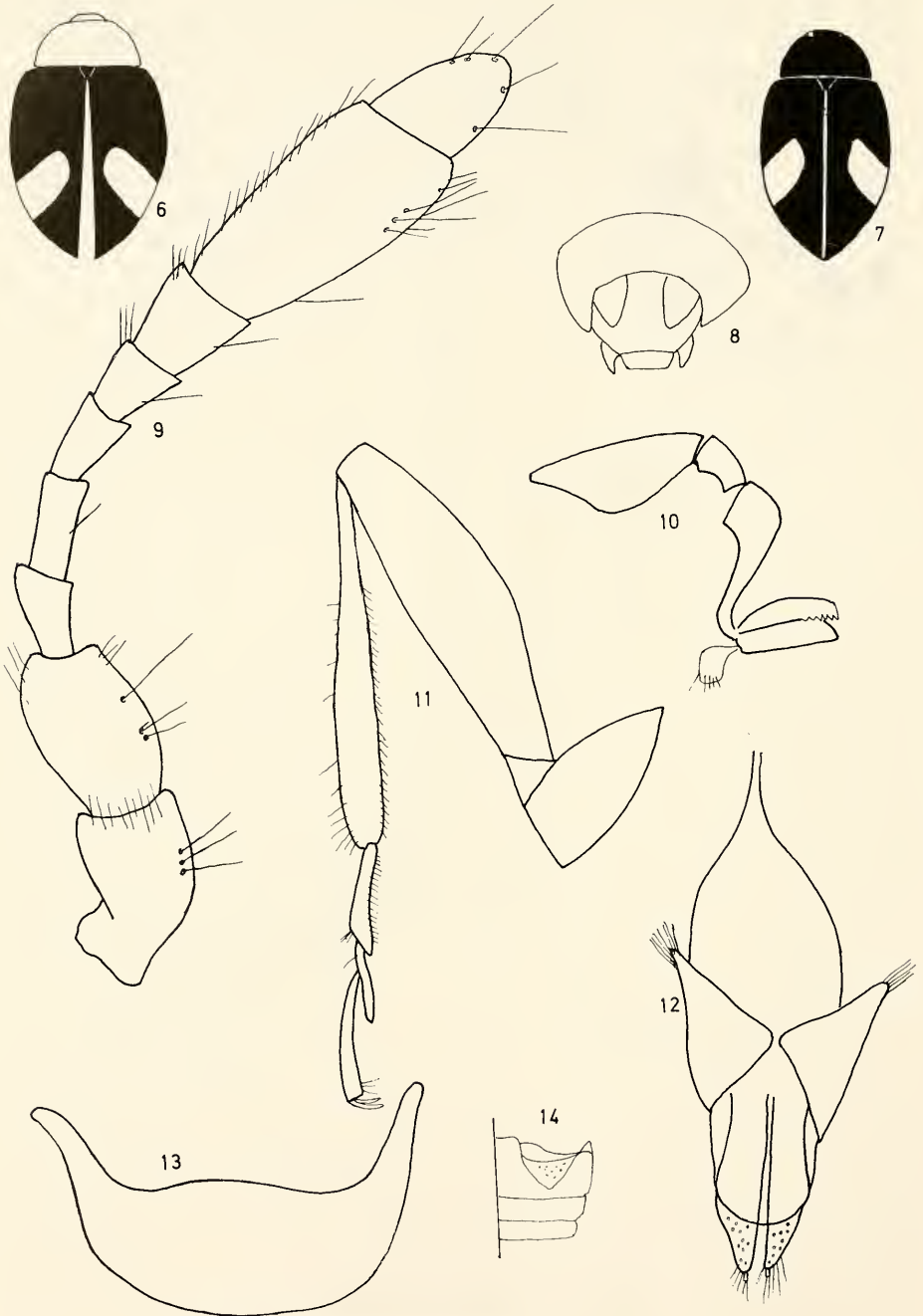
N 123.



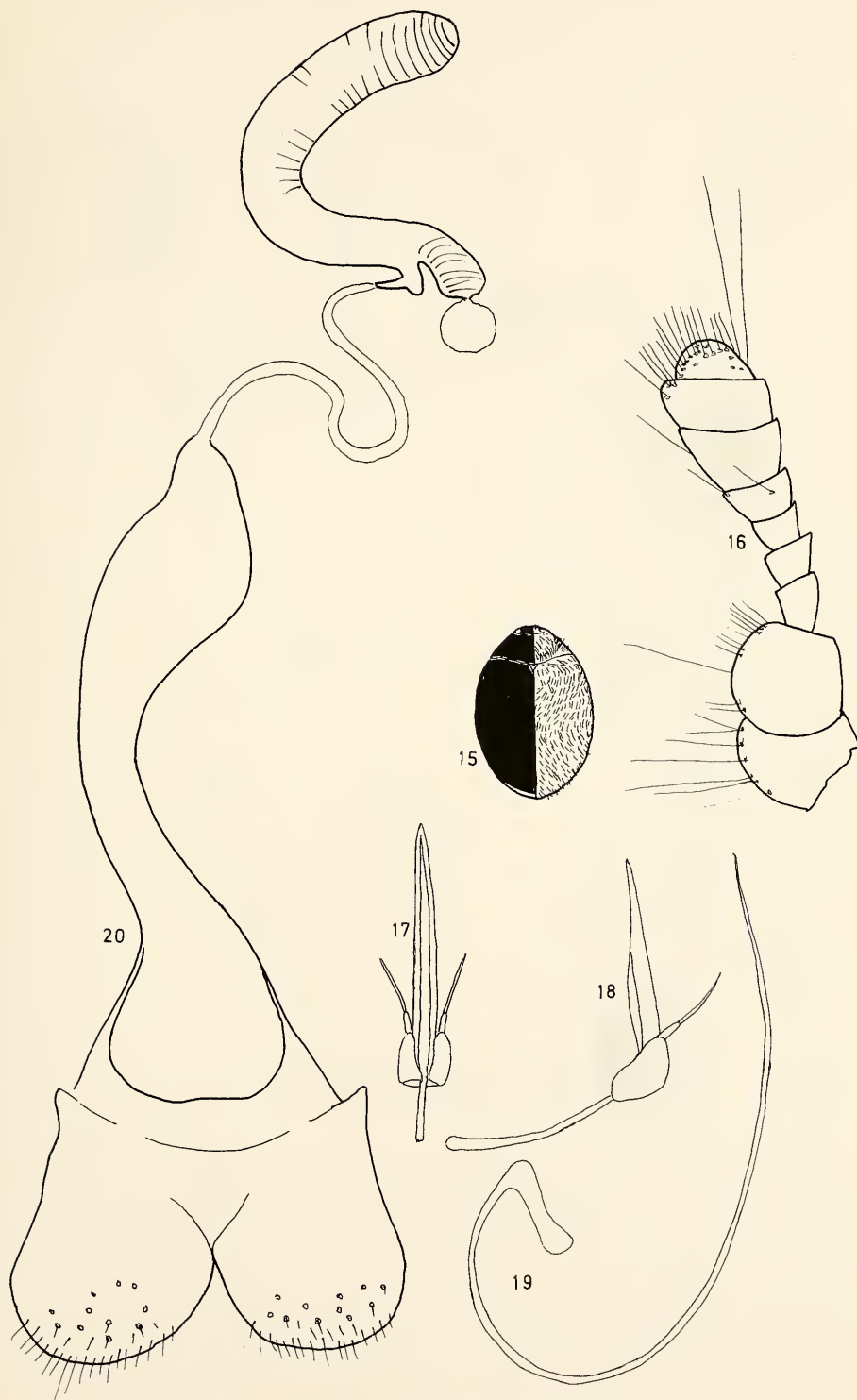
Figs 1–3. *Sticholotis duodecimmaculata* n. sp.



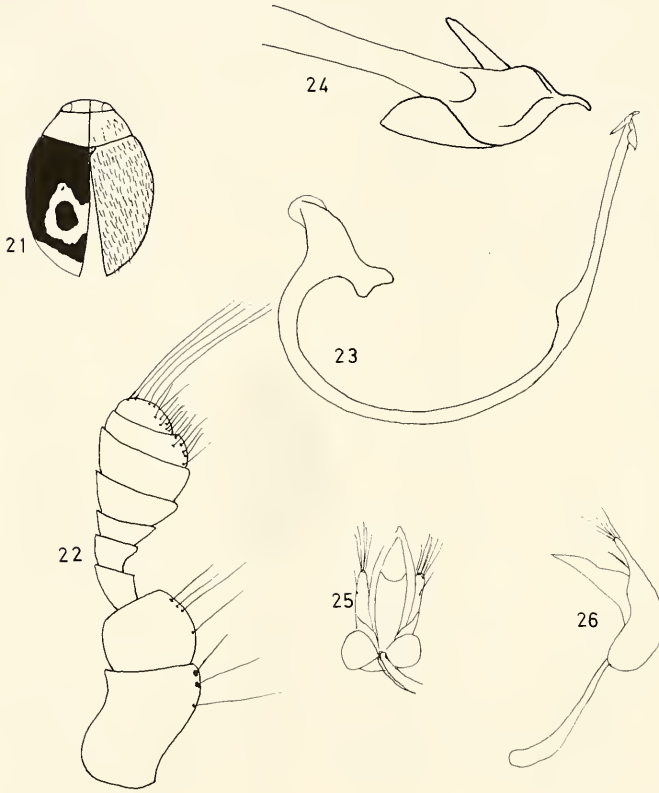
Figs 4-5. *Stichelotus rufolimbata* n. sp.

Figs 6–14. *Ghanius schawalleri* n. sp.

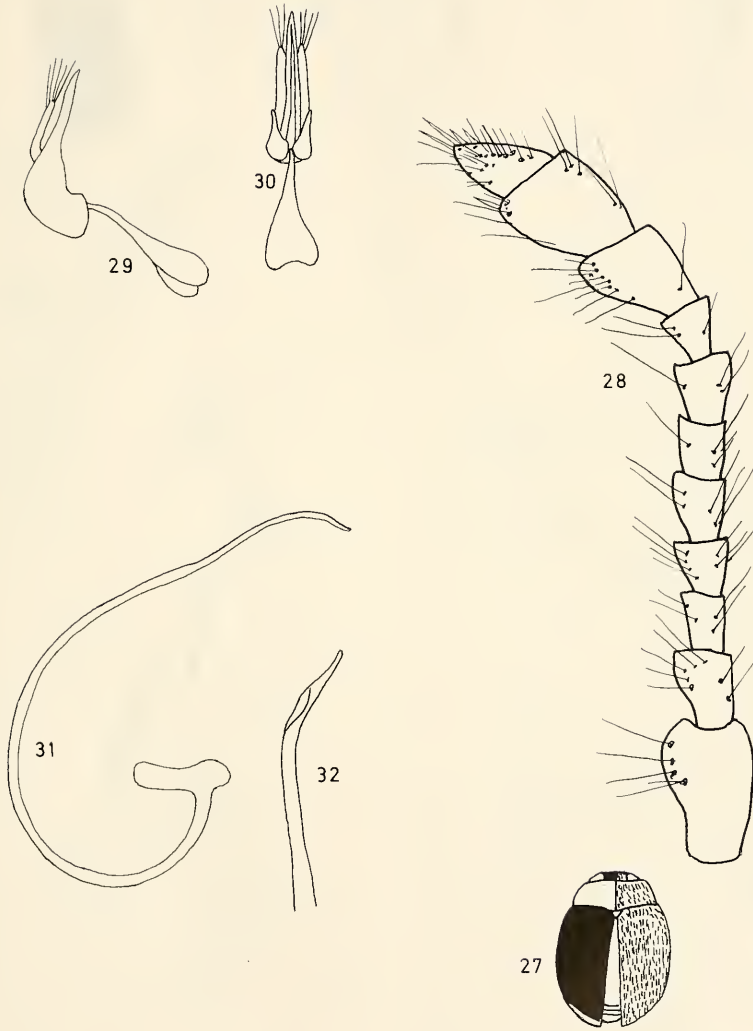




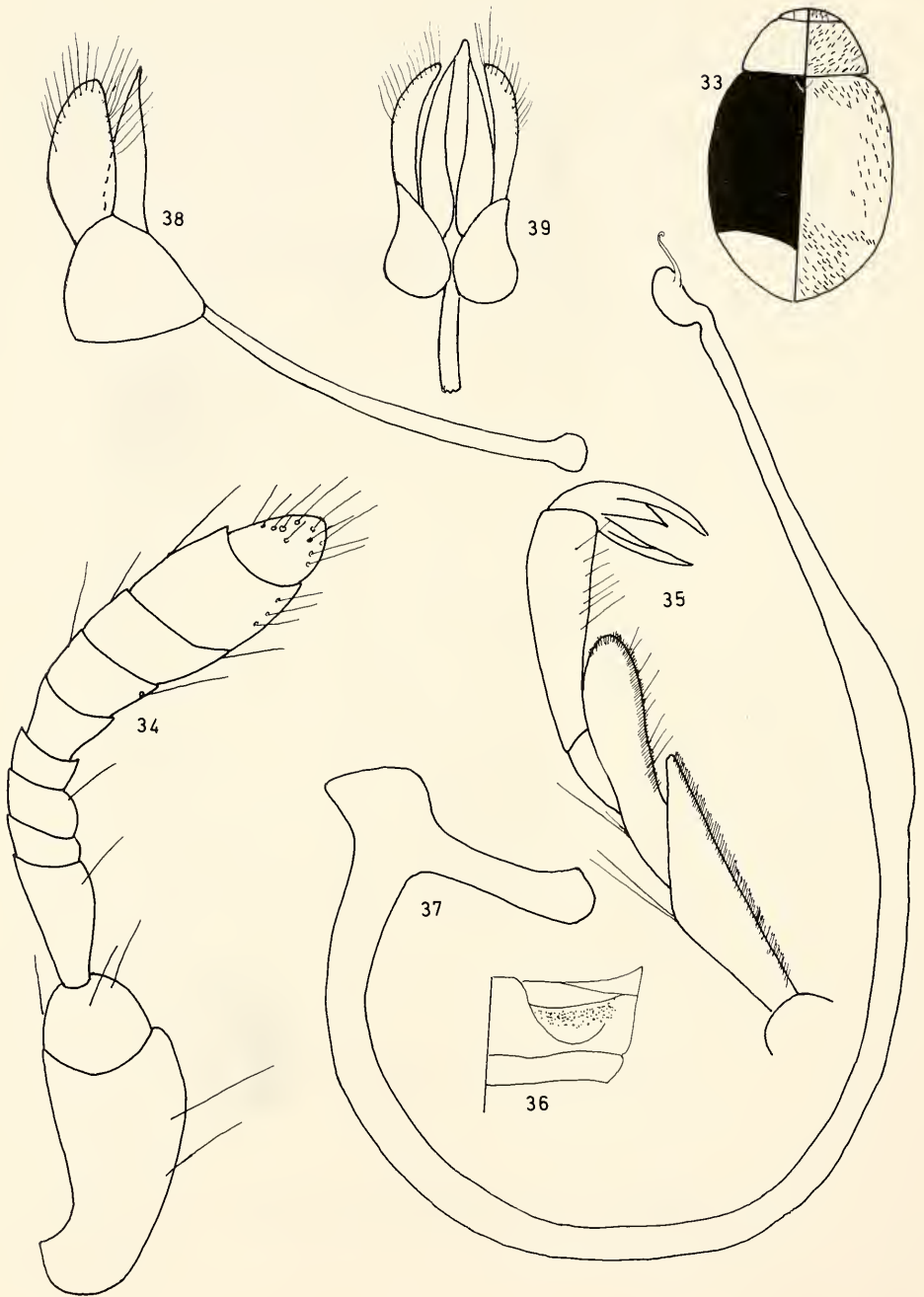
Figs 15–20. *Pseudoscymnus funerarius* n. sp.



Figs 21–26. *Pseudoscymnus ocelliferus* n. sp.

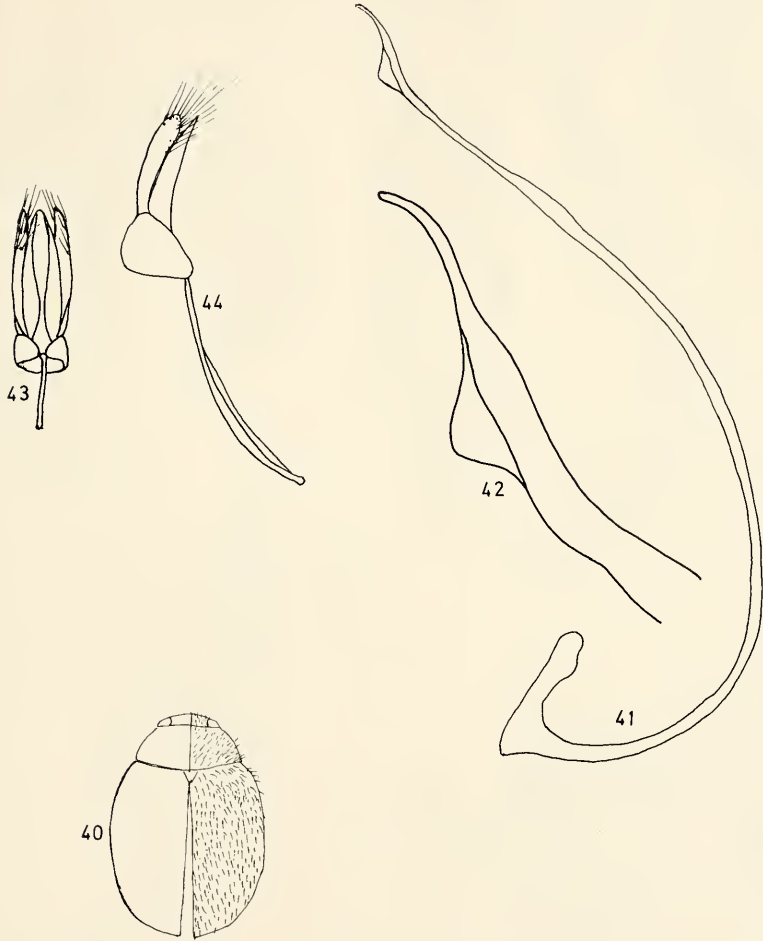


Figs 27–32. *Pseudoscymnus luteoniger* n. sp.

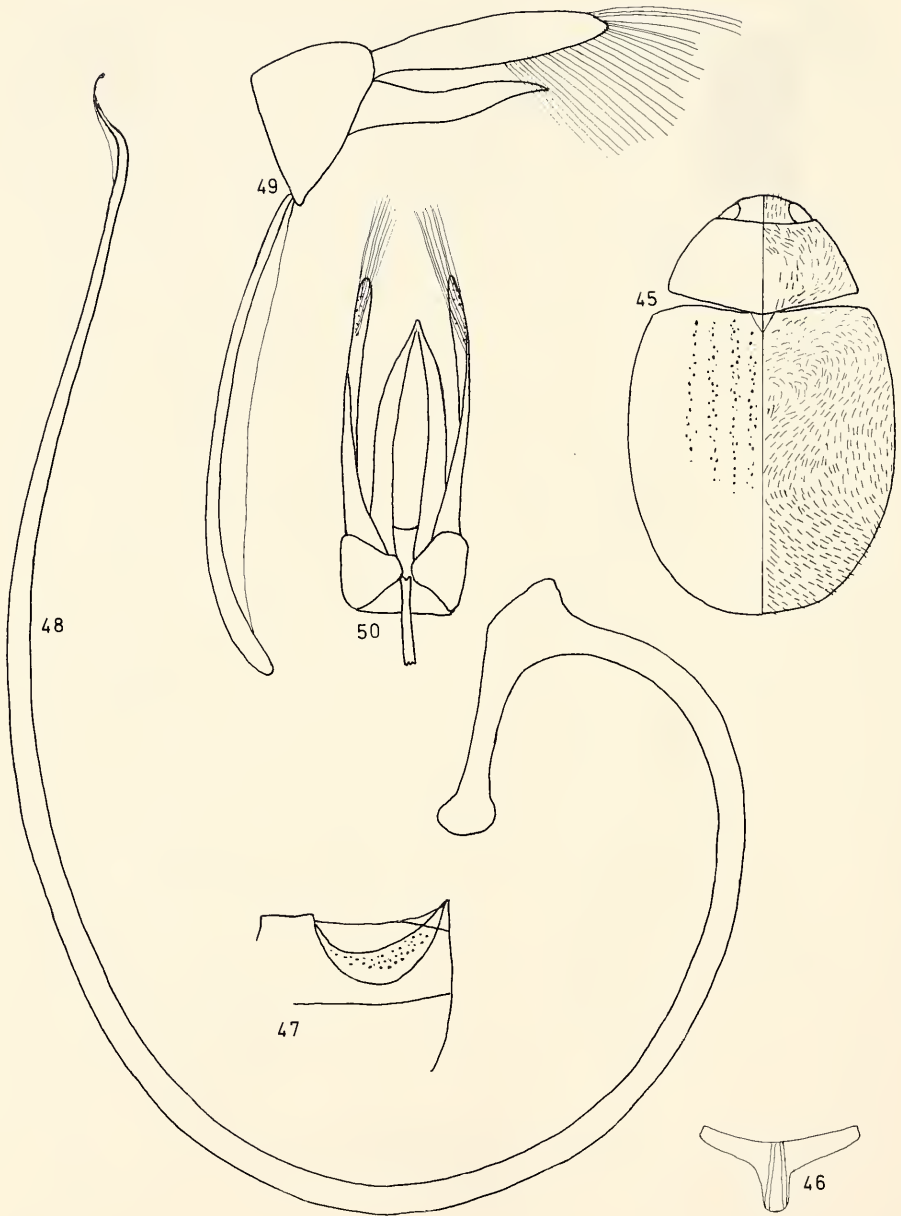


Figs 33-39. *Scymnus trisulicus* n. sp.

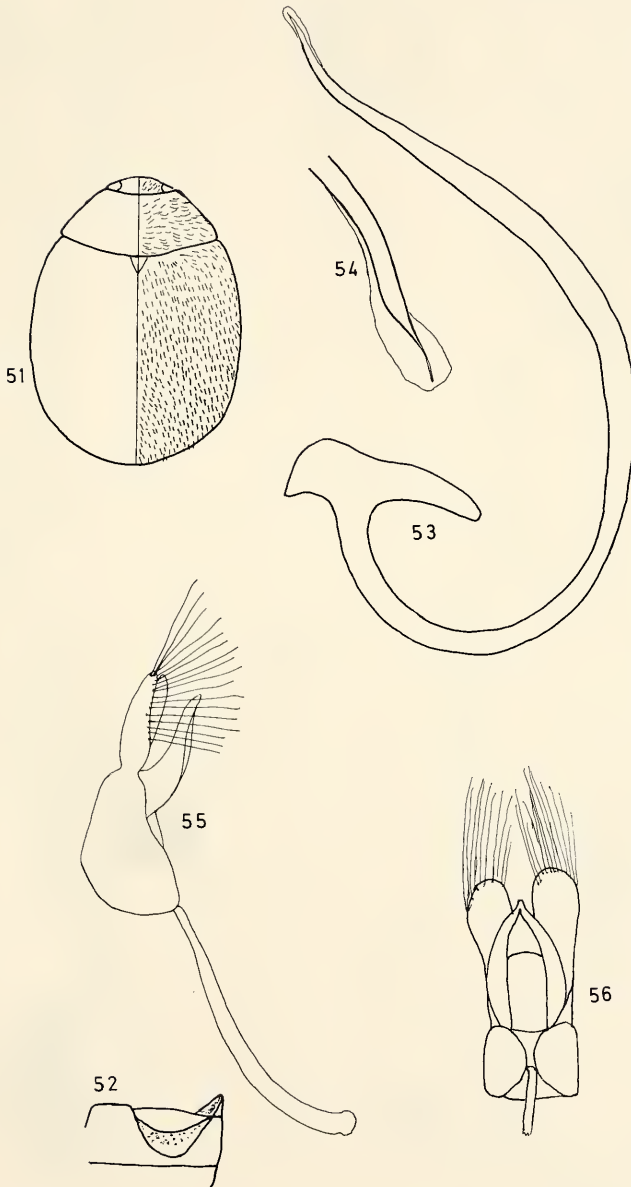




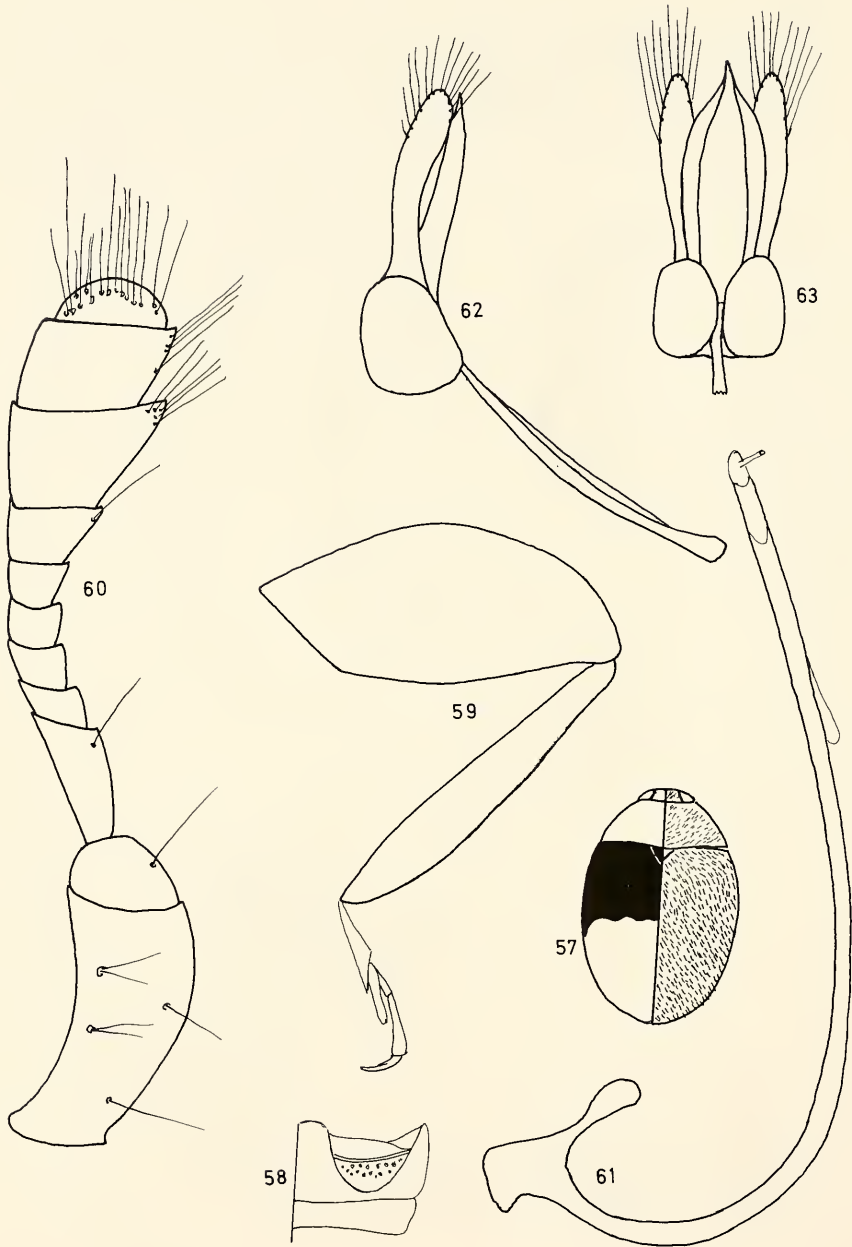
Figs 40-44. *Scymnus sufflavus* n. sp.



Figs 45–50. *Scymnus (Pullus) mellinus* n. sp.

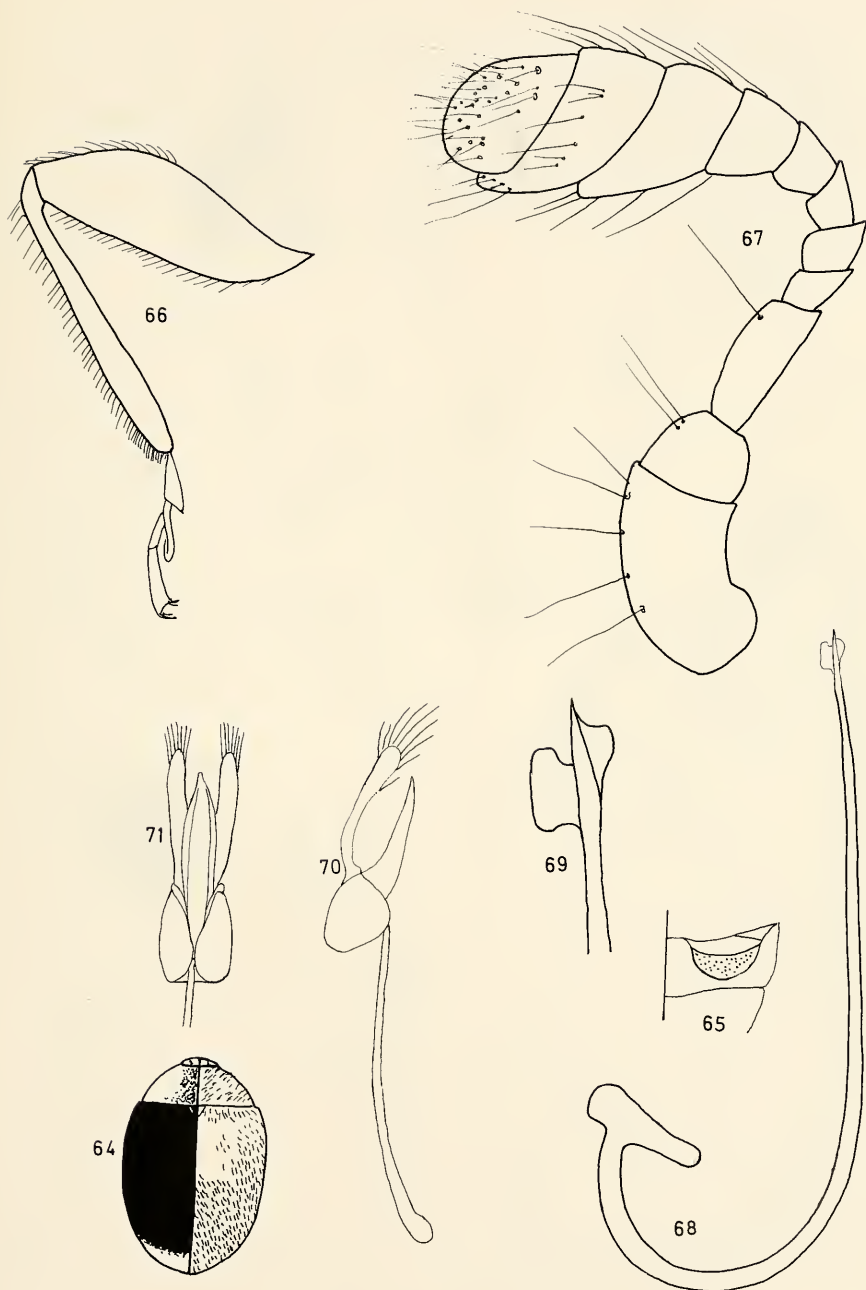


Figs 51–56. *Scymnus (Pullus) hepaticus* n. sp.

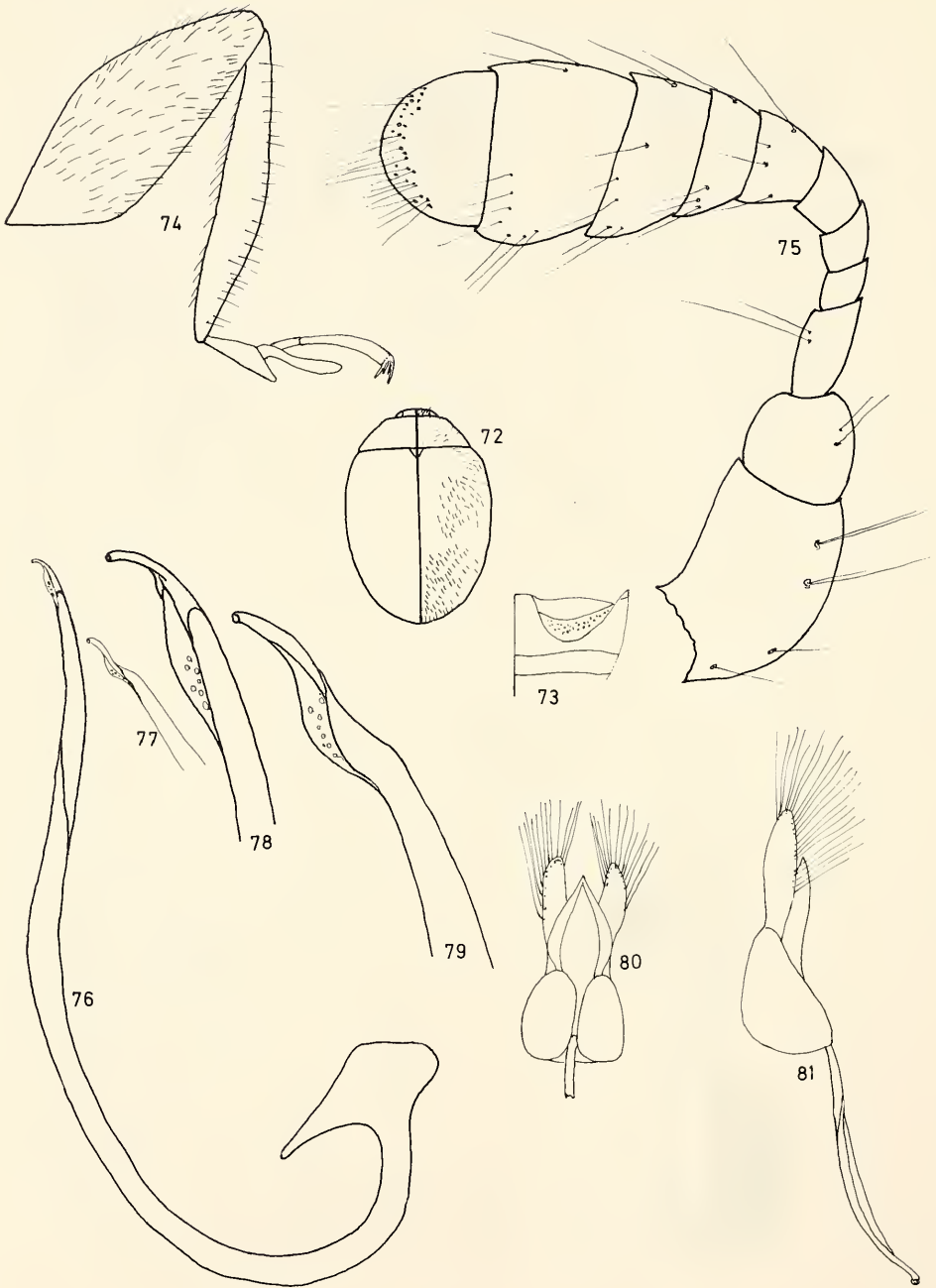


Figs 57–63. *Scymnus (Pullus) rufoniger* n. sp.

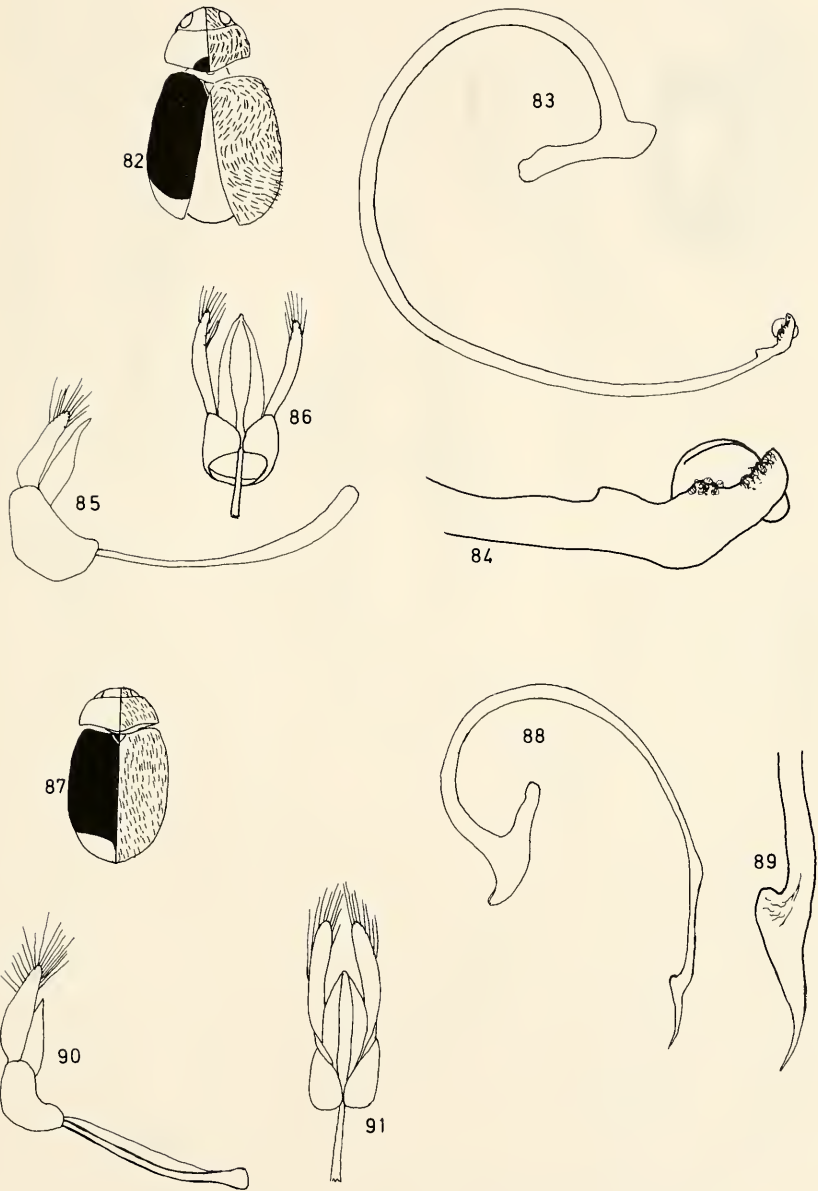




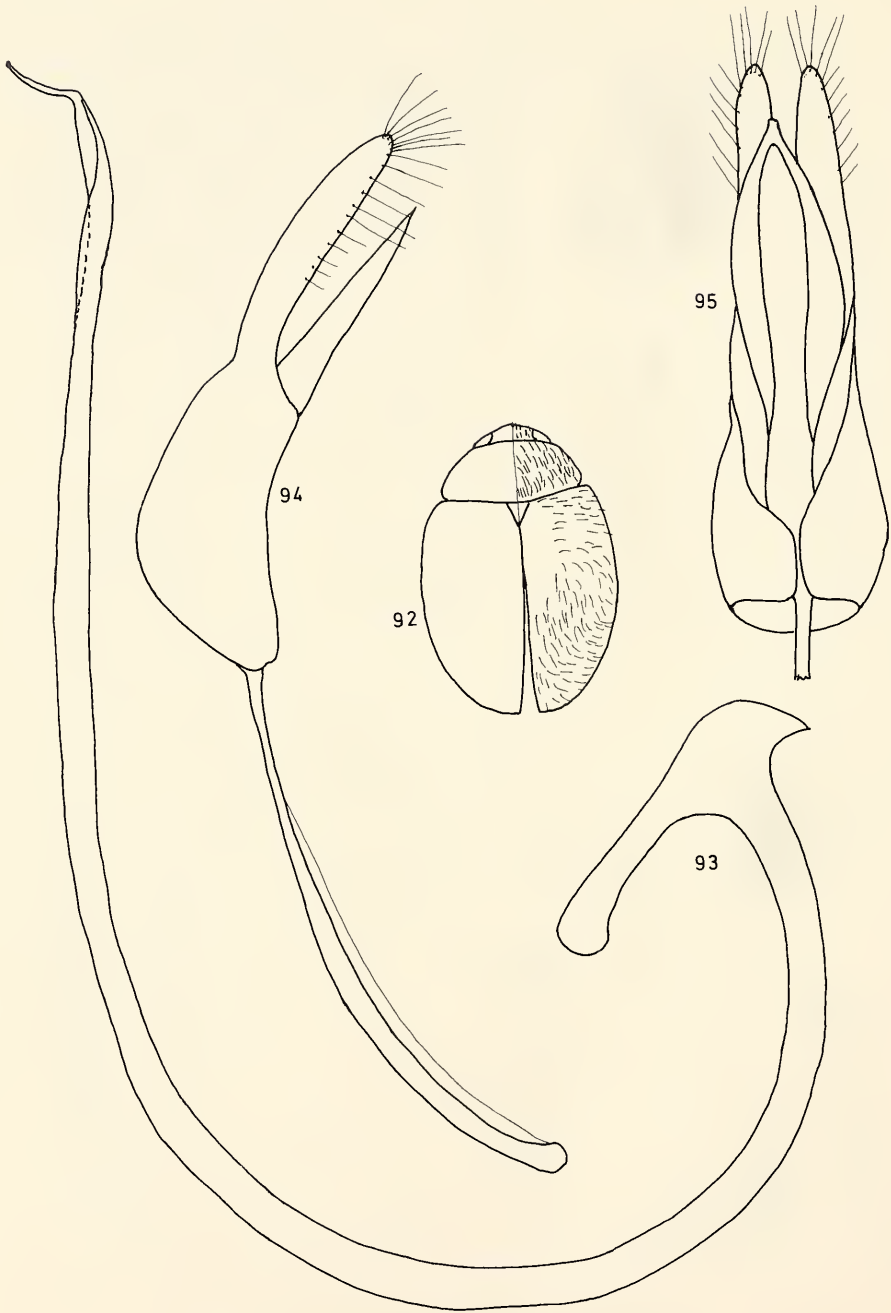
Figs 64–71. *Scymnus (Pullus) schawalleri* n. sp.



Figs 72-81. *Scymnus (Pullus) martensi* n. sp.

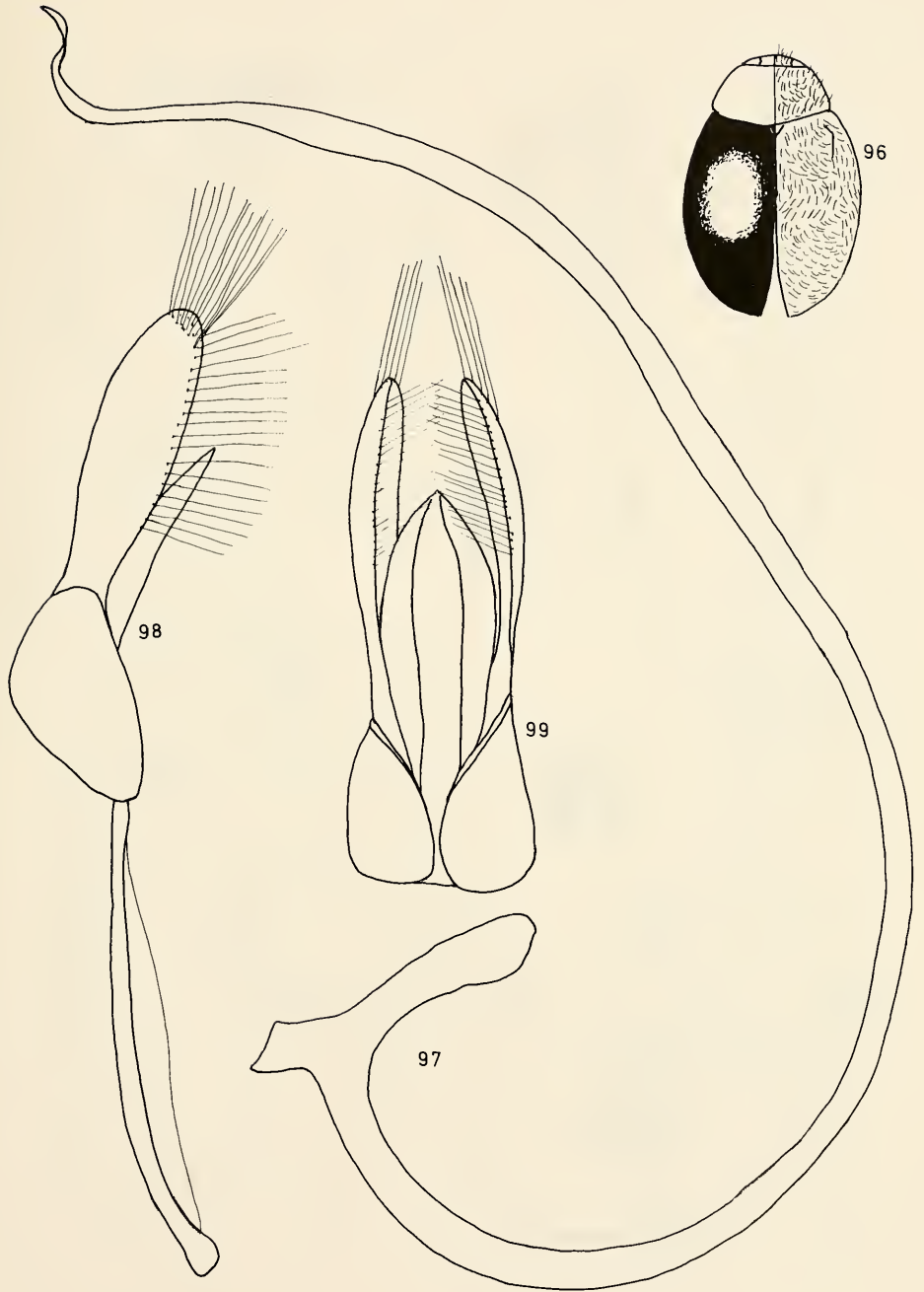


Figs 82–86. *Scymnus (Pullus) exilis* n. sp.  
Figs 87–91. *Scymnus (Pullus) fruticis* n. sp.

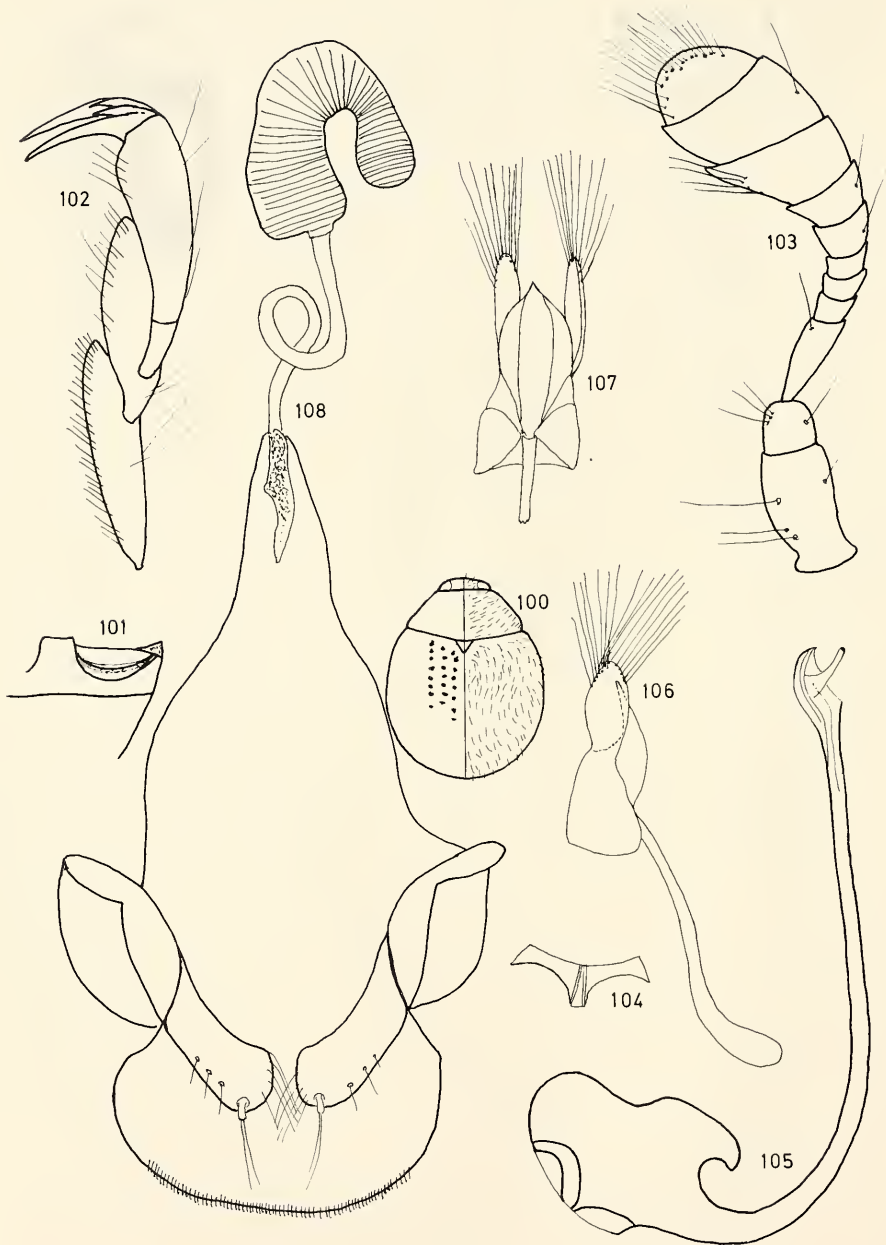


Figs 92–95. *Scymnus (Pullus) kosianus* n. sp.

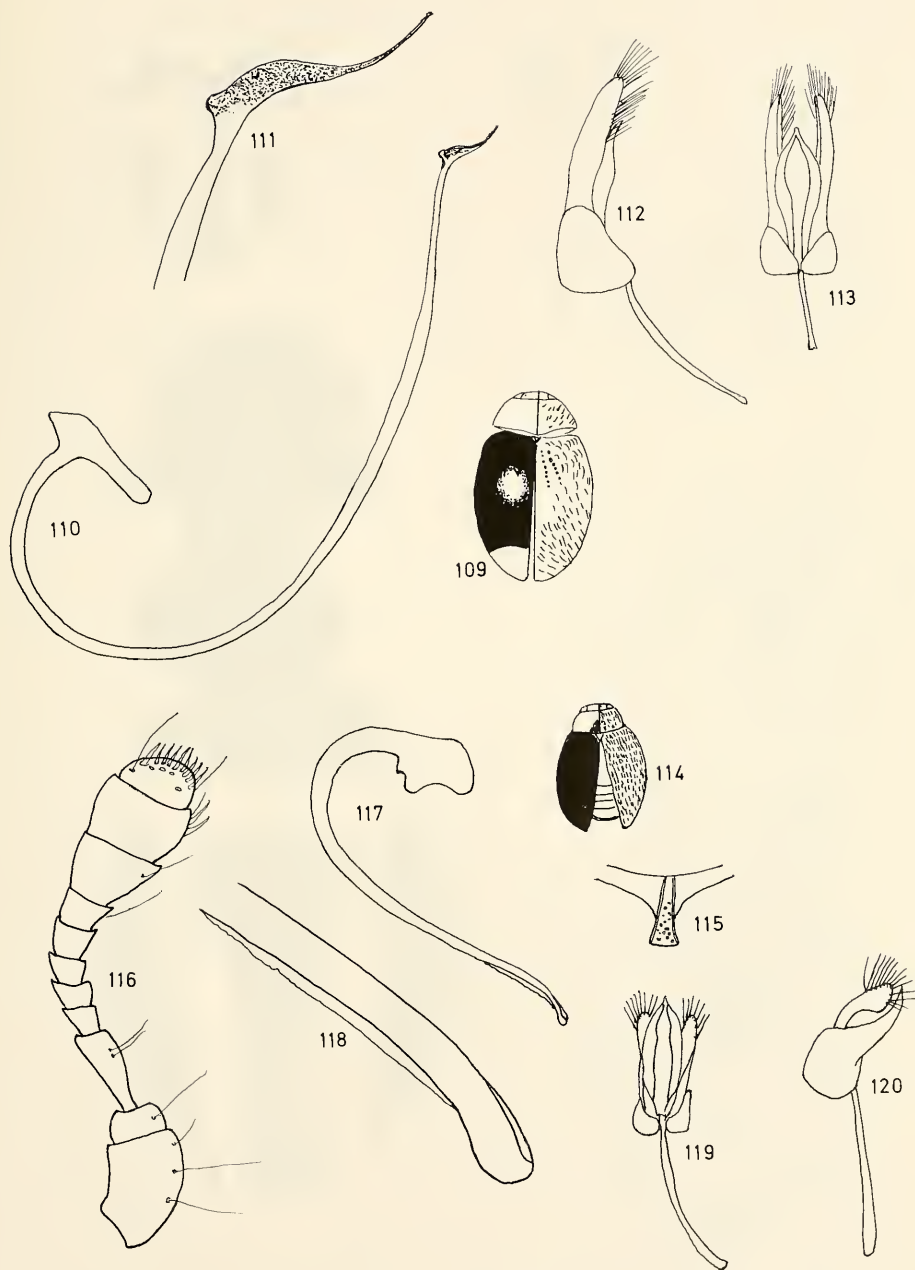




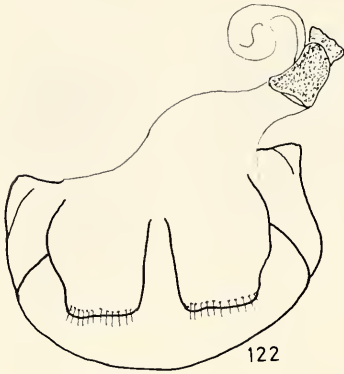
Figs 96-99. *Scymnus (Pullus) suturaloides* n. sp.



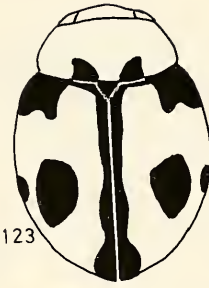
Figs 100–108. *Scymnus (Orthoscymnus) smetanai* n. sp.



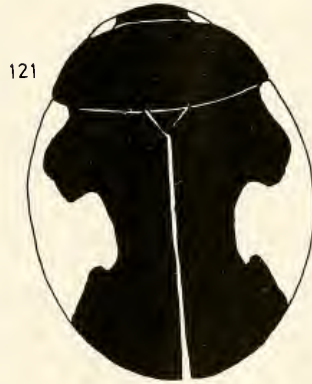
Figs 109–113. *Scymnus (Pullus) lucicolus* n. sp.  
 Figs 114–120. *Scymnus (Orthoscymnus) rhododendri* n. sp.



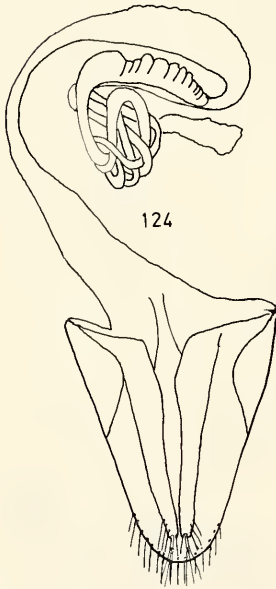
122



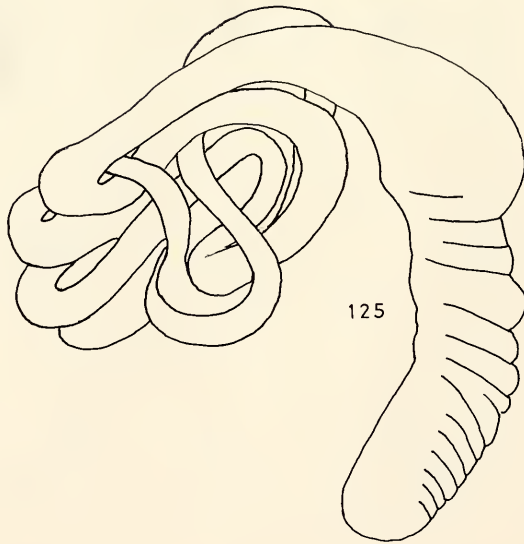
123



121



124



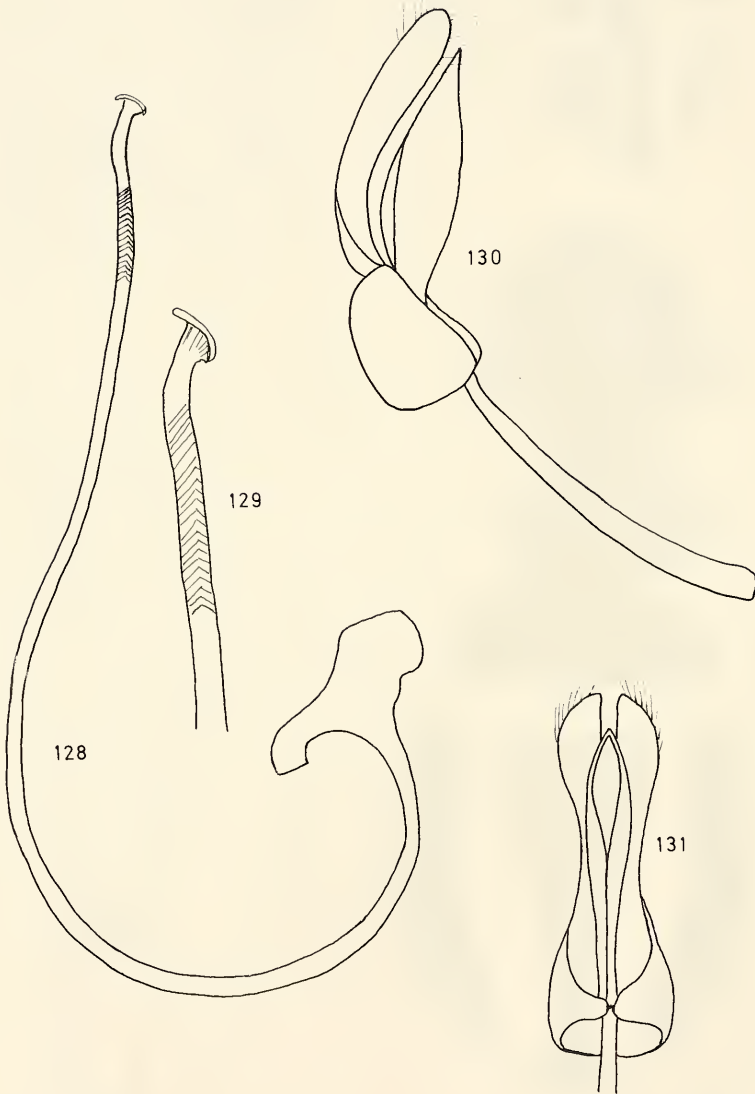
125

Figs 121–122. *Hyperaspis marginaloides* n. sp.  
 Figs 123–125. *Platynaspis nepalensis* n. sp.

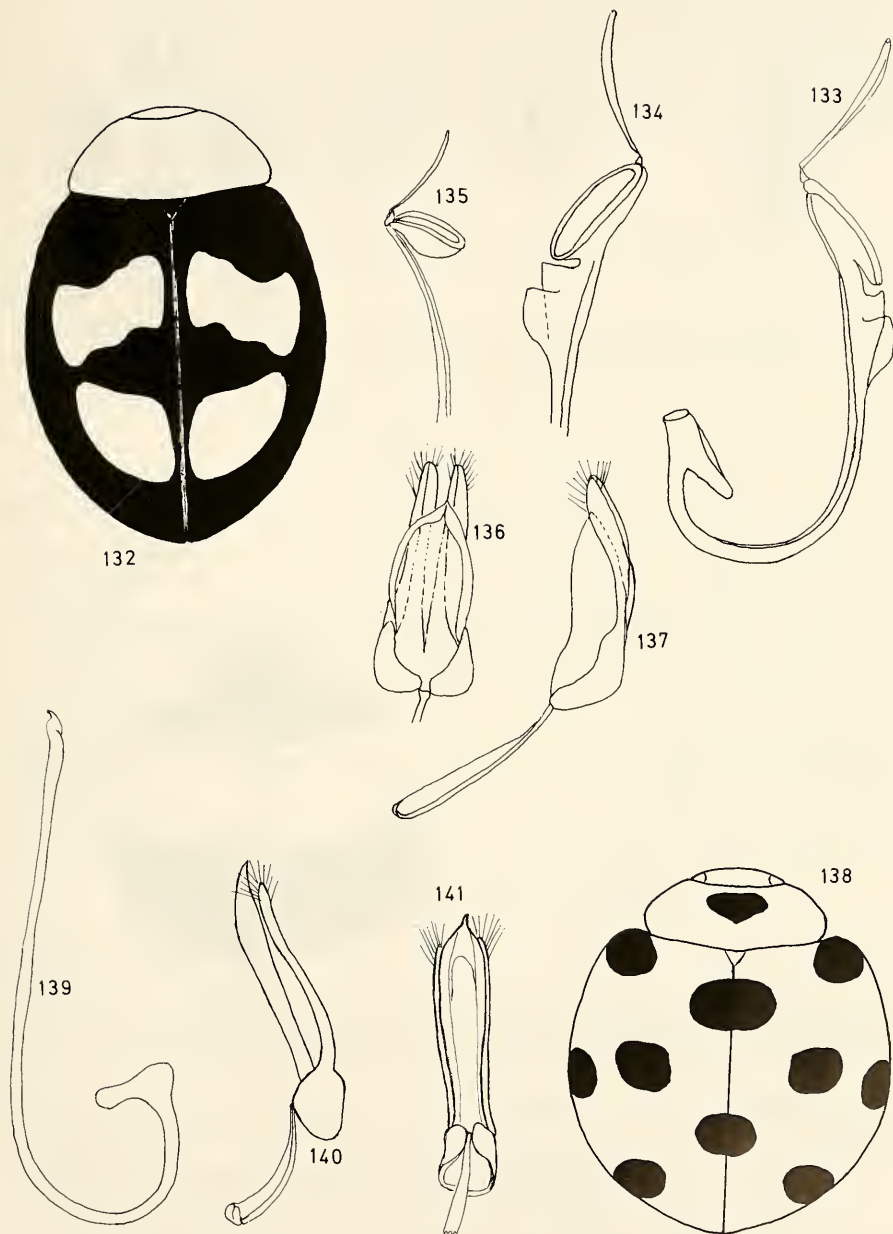




Figs 126–127. *Priscibrumus disjunctus* n. sp.



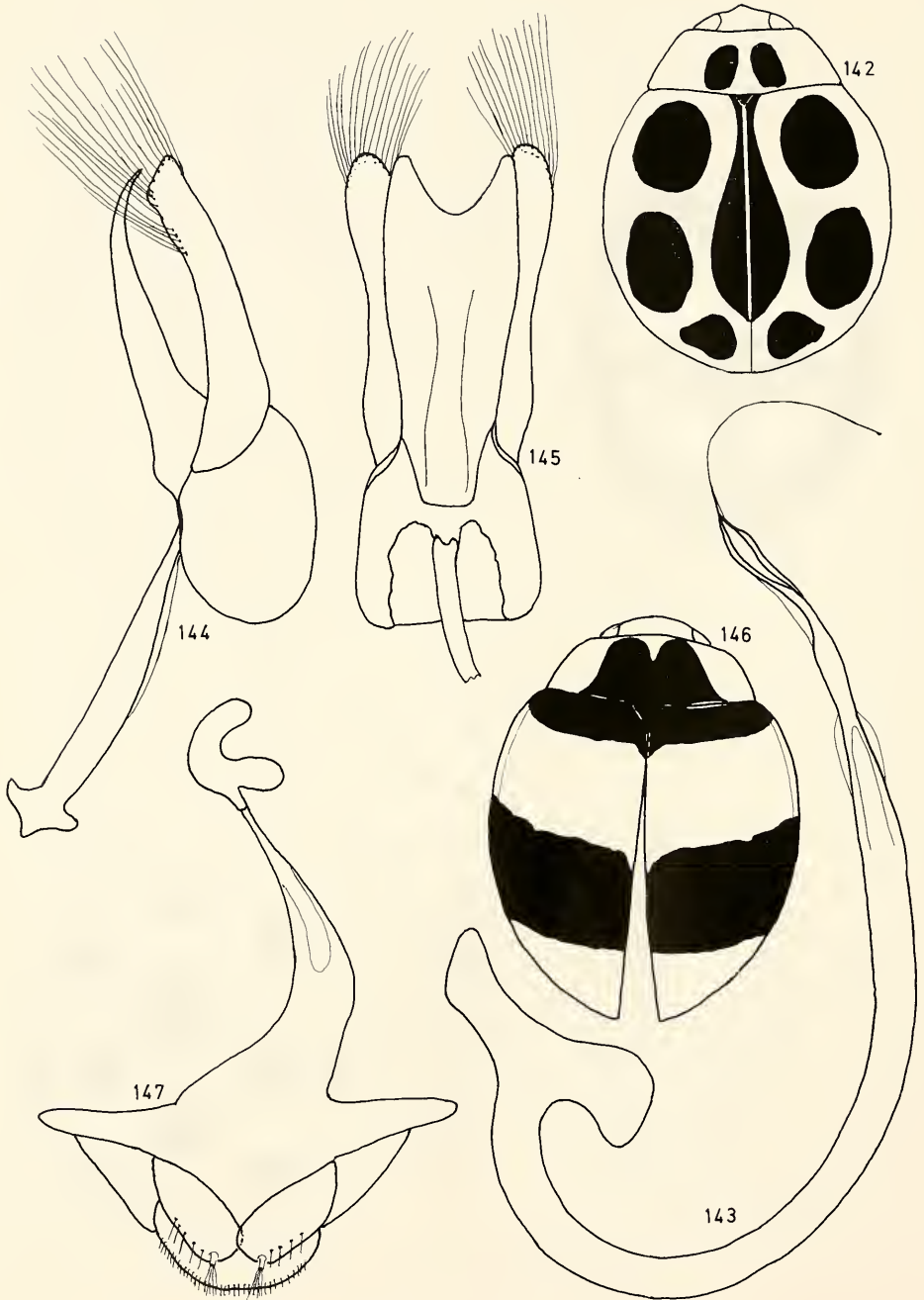
Figs 128–131. *Priscibrumus disjunctus* n. sp.



Figs 132–134, 136–137. *Summius hoangi* n. sp.

Fig. 135. *Summius tanhhoaensis* Hoang

Figs 138–141. *Epilachna schawalleri* n. sp.



Figs 142–145. *Oenopia smetanai* n. sp.  
Figs 146–147. *Oenopia diabolica* n. sp.

the basal three fourths. Head with very small and dense punctures, separated by a distance equal to 0.8–1.0 diameter of a puncture. Pronotal puncturation bigger; distance between points equal to 1–2 diameters. Elytral puncturation of the same dimensions as pronotal one but with punctures more superficial and separated by a distance equal to 2–4 diameters. Pro-, meso- and metasternum with big, superficial, regular and dense punctures. Female genitalia: Genital plates elongated; receptaculum seminis with a very long and contorted sperm duct.

Length: 3.10 mm; width 2.20 mm.

*Chilocorus circumdatus* (Gyllenhal, 1808)

MADER, 1955, p. 777.

Material (1 ex.) – SMNS: Sankhua Sabha Distr., Arun valley, betw. Chichila and Bhotebas, *Quercus* forest, 2000–1850 m, 20. VI. 1988, leg. MARTENS & SCHAWALLER, 1 ex.

Distribution: India, China. New for Nepal.

*Chilocorus nigrinus* (Fabricius, 1798)

MADER, 1955, p. 783.

Material (1 ex.) – MHNG: Khandbari Distr., Dunge Dara N Tumlingtar, 1100 m, 23. III. 82, leg. SMETANA, 1 ex.

Distribution: Himalayas, China, India, Burma, Sumatra.

*Chilocorus bijugus* Mulsant, 1853

MIYATAKE, 1985, p. 12.

Material (1 ex.) – MHNG: Lamjung Distr., Tarku, 850 m, 16. IX. 83, leg. SMETANA & LÖBL, 1 ex.

Distribution: Northern India (Assam, Kashmir), Nepal, Pakistan, China.

*Priscibrumus uropygialis* (Mulsant, 1853)

MADER, 1955, p. 796.

MIYATAKE, 1985, p. 11.

Material (1 ex.) – MHNG: Lalitpur Distr., Phulchoki, 2600 m, 13. X. 83, leg. SMETANA & LÖBL, 1 ex. – Kathmandu valley, Phulchoki, 2600 m, 28–30. IV. 84, leg. LÖBL & SMETANA, 1 ex.

Remarks: This species was recently moved from *Exochomus* to *Priscibrumus* by KOVÁŘ (1995).

Distribution: Northern India (Kashmir), Nepal, Bhutan.

*Priscibrumus disjunctus* n. sp. (figs 126–131)

Holotype (♂): Nepal, W Dhaulagiri, Dhule, 3100 m, 30. V. 1973, leg. MARTENS (SMNS).  
Paratypes (6 ex.): Dolpo, Ringmo, Phoksumdo lake, 3600 m, 10 VI. 1973, leg. MARTENS, 1 ex. – Thakkhola, Tukche, Taksang, 3100–3300 m, 27. II.–11. III. 1974, leg. MARTENS, 2 ex. – Manang Distr., Marsyandi, above Manang, 3800–4100 m, bushes, 19. IV. 1980, leg. MARTENS & AUSOBSKY, 3 ex. (SMNS, CC). – Manang, 4150 m, 1. X. 1977, leg. DEHARVENG, 1 ex. (MHNG).



Description: Body oval, moderately convex, covered with short and regular hairs; inferior part of the body black. Elytra ochraceous yellow with two longitudinal stripes and a joint sutural stripe black; these stripes never meet in the anterior or posterior part. The sutural one starts in the post-scutellar region, is large in the anterior part and does not reach the apex. Punctures of head and pronotum regular and sparse, of the elytra strong, irregular and dense. Elytral epipleuron plain in the anterior part, oblique in the posterior fourth. Maxillar palps feebly securiform. Prosteral process with one median carina. Anterior part of mesosternum not incavated. Metasternum feebly punctured with transverse superficial wrinkles and a longitudinal, median groove. Male and female genitalia as in figs 127–131.

Length: 3.80–4.00 mm.

*Brumoides lineatus* (Weise, 1885)

Material (1 ex.) – SMNS: Ilam Distr., Mai Khola valley, S Ilam, 800 m, 2. IV. 1980, leg. MARTENS & AUSOBSKY, 1 ex.

Distribution: Sri Lanka, Burma. New for Nepal.

*Brumoides suturalis* (Fabricius, 1798)

BIELAWSKI, 1972, p. 298.

MIYATAKE, 1970, p. 305.

Material (3 ex.) – SMNS: Ilam Distr., Mai Khola valley, 470 m, on river bank, bushes, 7. IV. 1988, leg. MARTENS & SCHAWALLER, 1 ex. – MHNG: Kathmandu Distr., Phulchoki, 2600 m, 19–23. IV. 82, leg. SMETANA, 1 ex. – Khandbari Distr., forest NE Kuwapani, 2550 m, 14. IV. 82, leg. SMETANA, 1 ex.

Distribution: India, Nepal, Sri Lanka.

#### 4.4. Subfamily Coccidulinae

*Lithophilus lindemanna* (Fürsch, 1960)

FÜRSCH, 1960, p. 64.

IABLOKOFF-KHNZORIAN, 1974, p. 181.

Material (2 ex.) – SMNS: Mustang Distr., above Kagbeni, 3100–3300 m, desert with *Caragana*, *Rosa*, 21. IV. 1980, leg. MARTENS & AUSOBSKY, 1 ex. – MHNG: Prov. Bagmati, Malemchi, 2800 m, 17. IV. 81, leg. LÖBL & SMETANA, 1 ex.

Distribution: Western Pakistan. New for Nepal.

*Sumnius renardi* Weise, 1892

HOANG, 1982, p. 139.

Material (6 ex.) – SMNS: Lamjung Distr., Marsyandi, Phalesangu to Lamjung, 640–750 m, 9. IV. 1980, leg. MARTENS & AUSOBSKY, 1 ex. – Lamjung Distr., Marsyandi, Naya-gaon to Bahundanda, 1150 m, 10. IV. 1980, leg. MARTENS & AUSOBSKY, 1 ex. – Kathmandu valley, Ganabahal and Baneshwar, 1350 m, cultural land, 17–20. VII. 1983, leg. MARTENS & SCHAWALLER, 1 ex. – Gorkha/Dhading Distr., Gorlabesi to Dobhan, mixed forest, 1000–1100 m, 30. VII. 1983, leg. MARTENS & SCHAWALLER, 3 ex.

Distribution: Northern India. New for Nepal.

*Sumnius tanhhoaensis* Hoang Düc Nhuan, 1980 (fig. 135)

HOANG, 1980, p. 8.

HOANG, 1982, p. 139.

Material (13 ex.) – SMNS: Ilam Distr., above Soktim, 500–800 m, *Shorea* forest on ridge, dry, 7. IV. 1988, leg. MARTENS & SCHAWALLER, 12 ex. – Ilam Distr., Mai Khola valley, 470 m, on river bank, bushes, 7. IV. 1988, leg. MARTENS & SCHAWALLER, 1 ex.

Distribution: Vietnam. New for Nepal.

*Sumnius hoangi* n. sp. (figs 132–134, 136–137)

Holotype (♂): Nepal, Sankhua Sabha Distr., Arun valley, between Darapangma and Khandbari, 1400–1100 m, tree-rich cultural land, 21. VI. 1988, leg. MARTENS & SCHAWALLER (SMNS).

Paratypes (12 ex.): Same data as holotype, 11 ex. – Taplejung Distr., from Yekti to Worebung pass, 1800–2000 m, tree-rich cultural land, 21. IV. 1988, leg. MARTENS & SCHAWALLER (SMNS, CC).

Description: Body elongate oval, moderately convex. Head red, pronotum red with a black spot on the anterior margin and on the basis. Elytra black, each with two red subquadrate spots; the first disposed obliquely in the anterior half, the second somewhat transversely in the posterior half. Antennae, mouthparts and legs red. Ventral part dark red with median part of abdominal segments black. Pubescence yellow-gray. Pronotum subtrapezoidal with posterior angles obtuse and the anterior right, 1.8 times wider than long. Elytra oval with subparallel sides, 1.2 longer than wide. Punctuation of the head indistinct, of pronotum fine, regular and sparse, of the elytra double and irregularly disposed. Antennae 10-segmented. Femoral lines forming a complete arch reaching about the half of the first abdominal sternite and surrounding a sparsely and superficially punctured area.

Length: 4.40–5.00 mm.

Derivatio nominis: The species is dedicated to HOANG DÜC NHUAN, who reviewed the genus and created the new tribe Sumniini.

*Sumnius* sp.

Material (1 ex.) – SMNS: Nepal, Sankhua Sabha Distr., betw. Pahakhola and Karmarang, cultural land, bushes, 1800–1500 m, 4. VI. 1988, leg. MARTENS & SCHAWALLER, 1 ex.

Remarks: This specimen, a female, is similar to *Sumnius yunnanus* Mader.

*Rodolia octoguttata* Weise, 1910

BIELAWSKI, 1972, p. 291.

Material (1 ex.) – SNMS: Sankhua Sabha Distr., below Karmarang to Hedangna, tree-rich cultural land, 950–1350 m, 5. VI. 1988, leg. MARTENS & SCHAWALLER, 1 ex.

Distribution: India, Burma, Nepal.

## 4.5. Subfamily Coccinellinae

*Menochilus sexmaculatus* (Fabricius, 1781)

IABLOKOFF-KHNZORIAN, 1982, p. 146.

Material (2 ex.) – SMNS: Dhading Distr., below Samari Banjyang, 1000–1300 m, 23. VII. 1983, cultural land, leg. MARTENS & SCHAWALLER, 1 ex. – Ilam Distr., betw. Nodia Khola valley to Soktim, 240–500 m, *Shorea* forest, dry, 7. IV. 1988, leg. MARTENS & SCHAWALLER, 1 ex.

Distribution: South Iran, Afghanistan, Beluchistan, Pakistan, India, Nepal, Indochina, Philippines, Polynesia, China, Taiwan, Japan, Indonesia.

*Adalia tetraspilota* (Hope, 1831)

IABLOKOFF-KHNZORIAN, 1982, p. 436.

Material (1 ex.) – MHNG: Prov. Bagmati, Pokhare NE Barahbise, 2700 m, 2. V. 81, leg. LÖBL & SMETANA, 1 ex.

Distribution: Iran, Central Asia, Afghanistan, China (Sing Kiang), northern India, Nepal.

*Propylea dissecta* (Mulsant, 1850)

MIYATAKE, 1985, p. 15.

Material (1 ex.) – MHNG: Kathmandu Distr., Phulchoki, 2400–2600 m, 28–30. IV. 84, leg. LÖBL & SMETANA, 1 ex.

Distribution: India, Nepal.

*Propylea luteopustulata* (Mulsant, 1850)IABLOKOFF-KHNZORIAN, 1982, *Pania luteopustulata*, p. 132.

VANDEMBERG &amp; GORDON, 1991, p. 32.

Material (26 ex.) – SMNS: Nuwakot Distr., Trisuli, forest remnants, 600–650 m, 21–22. VII. 1983, leg. MARTENS & SCHAWALLER, 1 ex. – Dhading Distr., Kagune to Samari Banjyang, 800–1000 m, 23. VII. 1983, leg. MARTENS & SCHAWALLER, 1 ex. – Dhading Distr., Thorpu to Kordunje, 1300–1400 m, 24. VII. 1983, leg. MARTENS & SCHAWALLER, 2 ex. – Gorkha Distr., Buri Gandaki, Labubesi-Gorlabesi, 900–1000 m, 29. VII. 1983, leg. MARTENS & SCHAWALLER, 1 ex. – Taplejung Distr., Tamur Khola, Chirua, 1200 m, 14. IX. 1983, leg. MARTENS & DAAMS, 1 ex. – Kathmandu valley, Sheopuri Mt., degraded forest, bushes, 1700–2100 m, 25. VI. 1988, leg. MARTENS & SCHAWALLER, 1 ex. – Ilam Distr., 5 km N Sanishare, feet of Siwalik Mts, 270–300 m, mixed *Shorea* forest, 3–5. IV. 1988, leg. MARTENS & SCHAWALLER, 1 ex. – Taplejung Distr., from Yektin to Worebung Pass, 1800–2000 m, tree-rich cultural land, 21. IV. 1988, leg. MARTENS & SCHAWALLER, 2 ex. – Taplejung Distr., from Sablako Pass to Limbudin, 1300–1600 m, tree-rich cultural land, bushes, 22. IV. 1988, leg. MARTENS & SCHAWALLER, 2 ex. – Sankhua Sabha Distr., between Pahakhola and Karmarang, cultural land, bushes, 1800–1500 m, 4. VI. 1988, leg. MARTENS & SCHAWALLER, 2 ex. – Sankhua Sabha Distr., below Karmarang to Hedangna, tree-rich cultural land, 950–1350 m, 5. VI. 1988, leg. MARTENS & SCHAWALLER, 3 ex. – Sankhua Sabha Distr., Arun valley bottom betw. Hedangna and Num, subtropical forest, 950–1000 m, 6–8. VI. 1988, leg. MARTENS & SCHAWALLER, 2 ex. – MHNG: Kosi, Num, 1800–2000 m, 23. IV. 84, leg. LÖBL & SMETANA, 2 ex. – Nandana NE Pokhara, 1300 m, 11. X. 83, leg. LÖBL, 2 ex. – Kosi, Arun valley, Num, 1050 m, 22. IV. 84, leg. LÖBL & SMETANA, 3 ex.

Remarks: This species was attributed to the genus *Pania* by IABLOKOFF-KHNZORIAN (1982). *Pania* falls in synonymy with *Propylea* as stated by VANDEMBERG & GORDON (1991).

Distribution: India, Nepal, Himalayas, Tibet, southern China, Sri Lanka, Burma, Vietnam.

*Bothrocalvia decemsignata* Iablokoff-Khnzorian, 1982

IABLOKOFF-KHNZORIAN, 1982, p. 174.

Material (1 ex.) – MHNG: Kosi, Arun valley, Num, 1050 m, 20. IV. 84, leg. LÖBL & SMETANA, 1 ex.

Remarks: This species was known only by one specimen from Java (IABLOKOFF-KHNZORIAN does not state the museum where the holotype is deposited). This specimen is the second known and the external characters well agree with the author's description.

Distribution: Java. New for Nepal.

*Calvia (Anisocalvia) sykesi* (Crotch, 1874)

IABLOKOFF-KHNZORIAN, 1982, p. 188.

Material (1 ex.) – SMNS: Sankhua Sabha Distr., Arun valley, Chichila, *Quercus* forest, bushes near village, 1900–2000 m, 18–20. VI. 1988, leg. MARTENS & SCHAWALLER, 1 ex.

Distribution: India, Himalayas, Nepal.

*Calvia (Anisocalvia) breiti* (Mader, 1932)

IABLOKOFF-KHNZORIAN, 1982, p. 188.

Material (4 ex.) – SMNS: Trisuli valley near Dunche, 2000 m, IV. 1973, leg. MARTENS, 1 ex. – Trisuli valley, Gosainkund, 3200 m, 23–26. IV. 1973, leg. MARTENS, 1 ex. – W Dhaulagiri, Thankur, N Dhorpatan, 3350 m, 24–28. V. 1973, leg. MARTENS, 2 ex.

Remarks: I collected this species in Kashmir (Pahalgam) feeding on branches of coniferous trees.

Distribution: Northern India (Kulu). New for Nepal.

*Halyzia sanscrita* Mulsant, 1853

Material (1 ex.) – MHNG: Kosi, Induwa Khola valley, 2800 m, 15. IV. 84, leg. LÖBL & SMETANA, 1 ex.

Distribution: Northern India, Tibet, southern China. New for Nepal.

*Halyzia straminea* (Hope, 1831)

IABLOKOFF-KHNZORIAN, 1982, p. 216.

Material (12 ex.) – MHNG: Kosi, Kuwapani-Chichila, 2300–2100 m, 24. IV. 84, leg. LÖBL & SMETANA, 12 ex.

Distribution: Northern India (Sikkim, Bengal), China, Andaman Islands. New for Nepal.



*Lemnia biplagiata* (Swartz, 1808)

IABLOKOFF-KHNZORIAN, 1982, p. 252.

Material (2 ex.) – SMNS: Dhading Distr., Kagune to Samari Banjyang, 800–1000 m, 23. VII. 1983, cultural land, leg. MARTENS & SCHAWALLER, 1 ex. – Dhading Distr., W Samari Banjyang/Topal Khola, 1000–1200 m, 23. VII. 1983, cultural land, leg. MARTENS & SCHAWALLER, 1 ex.

Distribution: India, Indochina, China, Corea, Japan, Taiwan, Indonesia. New for Nepal.

*Lemnia bissellata* (Mulsant, 1850)

IABLOKOFF-KHNZORIAN, 1982, *Lemnia bisellata*, p. 256, misspelling.

Material: (10 ex.) – SMNS: Gorkha Distr., Buri Gandaki, Labubesi to Gorlabesi, 900–1000 m, broadleaved forest, 29. VII. 1983, leg. MARTENS & SCHAWALLER, 1 ex. – Gorkha Distr., below Barpak to Doreni, 1100–900 m, forest remnants, 12. VIII. 1983, leg. MARTENS & SCHAWALLER, 1 ex. – Gorkha Distr., Darondi Khola betw. Doreni and Motar, 900–750 m, 13. VIII. 1983, leg. MARTENS & SCHAWALLER, 1 ex. – Taplejung Distr., Kabeli Khola, below Limbudin, river bank, bushes, 950 m, 23. IV. 1988, leg. MARTENS & SCHAWALLER, 1 ex. – Taplejung Distr., confluence of Kabeli Khola and Tada Khola, 1000–1050 m, broadleaved forest, 23–25. IV. 1988, leg. MARTENS & SCHAWALLER. – MHNG: Kosi, Pangma to Ahale, 1600–2000 m, 4. IV. 1984, leg. LÖBL & SMETANA, 1 ex. – Lamjung Distr., Besisahar, 17. IX. 1983, leg. SMETANA & LÖBL, 4 ex.

Distribution: India (Sikkim), Nepal, Bangladesh, Vietnam, Sumatra, New Guinea.

*Alloneda dodecaspilota* (Hope, 1831)

IABLOKOFF-KHNZORIAN, 1982, p. 252.

MIYATAKE, 1985, p. 19.

Material (2 ex.) – SMNS: Sankhua Sabha Distr., below Karmarang to Hedangna, tree-rich cultural land, 950–1350 m, 5. VI. 1988, leg. MARTENS & SCHAWALLER, 1 ex. – Sankhua Sabha Distr., Arun valley, betw. Bhotebas and Darapangma, cultural land, 1800–1400 m, 20. VI. 1988, leg. MARTENS & SCHAWALLER, 1 ex.

Distribution: Nepal, northern India (Sikkim), Burma, Vietnam.

*Illeis bistigmosa* (Mulsant, 1850)

IABLOKOFF-KHNZORIAN, 1982, p. 288.

Material (1 ex.) – SMNS: Sankhua Sabha Distr., Arun valley, betw. Darapangma and Khandbari, tree-rich cultural land, 1400–1100 m, 21. VI. 1988, leg. MARTENS & SCHAWALLER, 1 ex.

Distribution: India, Sri Lanka, Thailand, Indonesia. New for Nepal.

*Hippodamia (Parippodamia) arctica* (Schneider, 1792)

IABLOKOFF-KHNZORIAN, 1982, p. 322.

Material (1 ex.) – MHNG: Kathmandu valley, Phulchoki, 2600 m, 19–23. IV. 82, leg. SMETANA, 1 ex.

Distribution: Northern Scandinavia, northern Russia, Alaska, northern Cana-



da, Tian Shan, eastern Siberia, Altai, Touva, Dzhungaria, Mongolia, northern China. New for Nepal.

*Hippodamia (Adonia) variegata* (Goeze, 1777)

IABLOKOFF-KHNZORIAN, 1982, p. 326.

Material (17 ex.) – SMNS: Dolpo, Suli Gad valley, 2600–3000 m, 7–9. VI. 73, leg. MARTENS, 4 ex. – Thakkhola, Marpha, 3200 m, 6–7. VI. 1973, leg. MARTENS, 1 ex. – Chordung/Jiri, 2900 m, III. 73, leg. MARTENS, 1 ex. – Jomosom-Tukche, 2700 m, 30. VI. 73, leg. MARTENS, 1 ex. – Kathmandu valley, Ganabahal and Baneshwar, 1350 m, 17–20. VII. 1983, leg. MARTENS & SCHAWALLER, 1 ex. – Kathmandu Distr., Sheopuri Mt., degraded forest, bushes, 1700–2100 m, 25. VI. 1988, leg. MARTENS & SCHAWALLER, 1 ex. – Taplejung Distr., Kabeli Khola above Yamputhin, right bank of river, open hillside, bushes, 1700–2400 m, 1. V. 1988, leg. MARTENS & SCHAWALLER, 1 ex. – Sankhua Sabha Distr., Arun valley, betw. Bhotebas and Darapangma, cultural land, 1800–1400 m, 20. VI. 1988, leg. MARTENS & SCHAWALLER, 1 ex. – Taplejung Distr., Hellok in Tamur valley, 2000 m, forest remnant, bushes, 17. V. 1988, leg. MARTENS & SCHAWALLER, 1 ex. – MHNG: Surkhet (fields), 600 m, 22–24. III. 80, 2 ex. – Daidlekh (range), 1480 m, 2 ex. – Manang Distr., Manang to Thorong Pass, 3600–4000 m, 27. IX. 83, leg. SMETANA & LÖBL, 1 ex.

Remarks: All the specimens have the black spots expanded.

Distribution: Palearctic Region, northern and eastern Africa, India, Nepal.

*Coccinella septempunctata* Linnaeus, 1758

IABLOKOFF-KHNZORIAN, 1982, p. 370.

Material (80 ex.) – SMNS: Kathmandu valley, Nagarjung, Juncok, 1400–1600 m, 18. VIII. 1983, secondary forest, leg. MARTENS & SCHAWALLER, 1 ex. – Kathmandu valley, Nagarjung, Juncok, 1900–2100 m, 18. VIII. 1983, leg. MARTENS & SCHAWALLER, 3 ex. – Nuwakot Distr., Trisuli, forest remnants, 600–650 m, 21–22. VII. 1983, leg. MARTENS & SCHAWALLER, 1 ex. – Gorkha Distr., Buri Gandaki, Suteo-Labubesi, 700–800 m, *Shorea*, 29. VII. 1983, leg. MARTENS & SCHAWALLER, 1 ex. – Gorkha Distr., Buri Gandaki, Nyak, 2270–2450 m, *Pinus excelsa*, 1. VIII. 1983, leg. MARTENS & SCHAWALLER, 1 ex. – Gorkha Distr., Chuling Khola, Djongshi Kharka, 3050–3400 m, 5. VIII. 1983, leg. MARTENS & SCHAWALLER, 1 ex. – Gorkha Distr., Rupina La, south slope, 4500–4100 m, 9. VIII. 1983, leg. MARTENS & SCHAWALLER, 1 ex. – Kathmandu valley, Sheopuri Mt., degraded forest, bushes, 1700–2100 m, 25. VI. 1988, leg. MARTENS & SCHAWALLER, 6 ex. – Ilam Distr., 5 km N Sanishare, feet of Siwalik Mts, 270–300 m, mixed *Shorea* forest, 3–5. IV. 1988, leg. MARTENS & SCHAWALLER, 1 ex. – Panchthar Distr., Dhorpar Kharka, mature *Rhododendron-Lithocarpus* forest, 2700 m, 13–16. IV. 1988, leg. MARTENS & SCHAWALLER, 1 ex. – Taplejung Distr., Omje Kharka NW Yamputhin, mature mixed broadleaved forest, 2300–2500 m, 1–6. V. 1988, leg. MARTENS & SCHAWALLER, 1 ex. – Taplejung Distr., upper Simbua Khola valley, near Tseram, 3250–3350 m, mature *Abies-Rhododendron* forest, 10–15. V. 1988, leg. MARTENS & SCHAWALLER, 1 ex. – Taplejung Distr., Yamputhin, ascent to pass Deorali, 2100–2600 m, cultural land, bushes, 16. V. 1988, leg. MARTENS & SCHAWALLER, 1 ex. – Sankhua Sabha Distr., above Pahakhola, *Quercus semecarpifolia-Rhododendron*, 2600–2800 m, 3. VI. 1988, leg. MARTENS & SCHAWALLER, 1 ex. – Sankhua Sabha Distr., betw. Pahakhola and Karmarang, cultural land, bushes, 1800–1500 m, 4. VI. 1988, leg. MARTENS & SCHAWALLER, 1 ex. – Sankhua Sabha Distr., Arun valley, Chichila, *Quercus*-forest, bushes near village, 1900–2000 m, 18–20. VI. 1988, leg. MARTENS & SCHAWALLER, 2 ex. – Sankhua Sabha Distr., Arun valley, betw. Chichila and Bhotebas, *Quercus*-forest, 2000–1850 m, 20. VI. 1988, leg. MARTENS & SCHAWALLER, 1 ex. – Thodung, 3200 m, 3–9. IV. 73, leg. MARTENS, 1 ex. – Tatopani, 1400–2200 m, 10. VII. 73, leg. MARTENS, 2 ex. – Modi Khola valley, Birethanti, 1000 m, 14. VII. 73, leg. MARTENS, 4 ex. – Trisuli valley, Gosainkund, 3200 m, 23–26. IV. 73, leg. MARTENS, 1 ex. – Thakkhola, Tukche, Thaksang, 3100–3300 m, 1–5. VII. 73, leg. MARTENS, 2 ex. – Chordung/Jiri, 2900 m, III. 73, leg. MARTENS, 2 ex. – Ting Sang La above Barabhise, 3400 m, leg. MARTENS, 1 ex. – S Annapurna, Gorapani from Sikha, 2200–2600 m, 11. VII. 1973, leg. MARTENS, 4 ex. – MHNG: Prov. Bagmati,

above Sundarikal, 2000 m, 4. IV. 81, leg. LÖBL & SMETANA, 2 ex. – Prov. Bagmati, Pokhare NE Barahbise, 2800 m, 2. V. 81, leg. LÖBL & SMETANA, 1 ex. – Prov. Bagmati, Kutumsang, 2500–2700 m, 7. IV. 81, leg. LÖBL & SMETANA, 3 ex. – Khandbari Distr., forest NE Kuwapani, 2100 m, 28. III. 82, leg. SMETANA, 4 ex. – idem, leg. SMETANA & LÖBL, 11 ex. – Khandbari Distr., forest above Ahale, 2300 m, 26. III. 82, leg. SMETANA, 2 ex. – Khandbari Distr., Arun river at Num, 1500–1600 m, 10. IV. 82, leg. SMETANA, 1 ex. – Kosi, Arun valley, Num, 1050 m, 22. IV. 84, leg. LÖBL & SMETANA, 4 ex. – Khandbari Distr., Baken W Tashigaon, 3200 m, 3–8. IV. 82, leg. SMETANA, 1 ex. – Manang Distr., Latha Manang W Bagarchhap, 2350 m, 22. IX. 83, leg. SMETANA & LÖBL, 1 ex. – Kosi, range NE Mangmaya, 2800 m, 7. IV. 84, leg. LÖBL & SMETANA, 1 ex.

Distribution: Palearctic Region, India, Bangladesh, Nepal, China. Imported in northern America.

*Coccinella magnopunctata* Rybakov, 1889

IABLOKOFF-KHNZORIAN, 1982, p. 363.

Material (3 ex.) – SMNS: Dolpo, Ringmo, Phoksumdo lake, 3600 m, 10. VI. 73, leg. MARTENS, 2 ex. – MHNG: Manang Distr., 4 km SE Pisang, 3050 m, 26. IX. 83, leg. SMETANA & LÖBL, 1 ex.

Distribution: Northern India (Kashmir), Tibet, Mongolia, Touva, western China. New for Nepal.

*Coccinella luteopicta* (Mulsant, 1866)

IABLOKOFF-KHNZORIAN, 1982, p. 395.

Material (10 ex.) – SMNS: Gorkha Distr., Chuling Khola, 3000–3400 m, *Abies/Quercus*, 3. VIII. 1983, leg. MARTENS & SCHAWALLER, 1 ex. – Gorkha Distr., Chuling Khola, Djongshi Kharka, 3050–3400 m, 5. VIII. 1983, leg. MARTENS & SCHAWALLER, 2 ex. – Taplejung Distr., Anda Deorali betw. Simbua and Gunsu Khola, 4250–4500 m, 9. IX. 1983, leg. MARTENS & DAAMS, 2 ex. – Taplejung Distr., upper Simbua Khola valley, near Tseram, 3250–3350 m, mature *Abies-Rhododendron* forest, 10–15. V. 1988, leg. MARTENS & SCHAWALLER, 1 ex. – Taplejung Distr., above Walungchung Gola, 3600–3800 m, open *Abies*-forest, *Rhododendron*, 21. V. 1988, leg. MARTENS & SCHAWALLER, 1 ex. – MHNG: Manang Distr., 4 km SE Pisang, 3050 m, 26. IX. 83, leg. SMETANA & LÖBL, 3 ex.

Distribution: Northern India, Nepal, Tibet, southern China, Yunnan.

*Coccinella transversalis* (Fabricius, 1781)

IABLOKOFF-KHNZORIAN, 1982, p. 392.

Material: (9 ex.) – SMNS: Ilam Distr., 5 km N Sanishare, feet of Siwalik Mts, 270–300 m, mixed *Shorea* forest, 3–5. IV. 1988, leg. MARTENS & SCHAWALLER, 2 ex. – Ilam Distr., Mai Khola valley, 470 m, on river bank, bushes, 7. IV. 1988, leg. MARTENS & SCHAWALLER, 1 ex. – Taplejung Distr., Kabeli Khola valley below Limbudin, 950 m, river bank, bushes, 22–23. IV. 1988, leg. MARTENS & SCHAWALLER, 1 ex. – MHNG: Kosi, Arun valley, Num, 1050 m, 22. IV. 84, leg. LÖBL & SMETANA, 2 ex. – Lamjung Distr., Tarku, 850 m, 16. IX. 83, leg. LÖBL & SMETANA, 1 ex. – Manang Distr., below Tal, 1500 m, 19. IX. 83, leg. SMETANA & LÖBL, 1 ex. – Jagtha to Boul Boule, 1200–1350 m, DEHARVENG leg., 1 ex.

Distribution: Himalayas, India, Sri Lanka, China, Indochina, Bangladesh, Indonesia, Taiwan, Japan, Australia, Tasmania, New Zealand.

*Oenopia signatella* (Mulsant, 1866)

IABLOKOFF-KHNZORIAN, 1982, p. 411.

Material (1 ex.) – SMNS: Ilam Distr., Mai Pokhari, 2150–2250 m, 23–25. VIII. 1983, leg. MARTENS & DAAMS, 1 ex.

Distribution: Northern India (Sikkim), Burma, Nepal.

*Oenopia sexareata* (Mulsant, 1853)

IABLOKOFF-KHNZORIAN, 1982, *Oenopia sexaerata*, p. 423, misspelling.

Material (3 ex.) – SMNS: Ilam Distr., Mai Khola below Ilam, 560 m, 22. VIII. 1983, leg. MARTENS & DAAMS, 1 ex. – Sankhua Sabha Distr., betw. Pahakhola and Karmarang, open forest, bushes, 2300–1800 m, 4. VI. 1988, leg. MARTENS & SCHAWALLER, 1 ex. – MHNG: Kosi, Arun valley, Num, 1050 m, 22. IV. 84, leg. LÖBL & SMETANA 1 ex.

Distribution: Himalayas, India, Burma, Vietnam, Yunnan, Japan.

*Oenopia sauzeti* Mulsant, 1866

IABLOKOFF-KHNZORIAN, 1982, p. 428.

Material (8 ex.) SMNS: Dhading Distr., W Samari Banjyang/Topal Khola, 1000–1200 m, 23. VII. 1983, leg. MARTENS & SCHAWALLER, 2 ex. – Dhading Distr., Thorpu to Kordunje, 1300–1400 m, 24. VII. 1983, leg. MARTENS & SCHAWALLER, 1 ex. – Gorkha Distr., Buri Gandaki, Labubesi-Gorlabesi, 900–1000 m, 29. VII. 1983, leg. MARTENS & SCHAWALLER, 1 ex. – Gorkha Distr., Darondi Khola below Barpak to Doreni, 1100–900 m, 12. VIII. 1983, forest remnants, leg. MARTENS & SCHAWALLER, 1 ex. – MHNG: Prov. Bagmati, Barabhise, 1600 m, 1. V. 81, leg. LÖBL & SMETANA, 3 ex.

Distribution: Himalayas, India, Burma, Thailand, southern China.

*Oenopia mimica* Weise, 1902

MIYATAKE, 1985, *Gyrocaria mimica*, p. 16.

Material (17 ex.) – SMNS: Modi Khola valley, Birethanti, 1000 m, 14. VII. 1973, leg. MARTENS, 6 ex. – Gorkha/Dhading Distr., Buri Gandaki, Jagat to opposite Panshing, 1300–1650 m, cultural land, 31. VII. 1983, leg. MARTENS & SCHAWALLER, 4 ex. – Gorkha Distr., Darondi Khola below Barpak, 1800–1500 m, 12. VIII. 1983, cultural land, leg. MARTENS & SCHAWALLER, 1 ex. – Kathmandu valley, Baneshwar, 1400 m, cultural land, gardens, 23–26. VI. 1988, leg. MARTENS & SCHAWALLER, 1 ex. – Taplejung Distr., upper Tamur valley from Lungthung/waterfall to bamboo bridge, 1800–2150 m, open forest, bushes, 19. V. 1988, leg. MARTENS & SCHAWALLER, 1 ex. – Sankhua Sabha Distr., betw. Pahakhola and Karmarang, cultural land, bushes, 1800–1500 m, 4. VI. 1988, leg. MARTENS & SCHAWALLER, 1 ex. – Sankhua Sabha Distr., Arun valley bottom betw. Hedangna and Num, subtropical forest, 950–1000 m, 6–8. VI. 1988, leg. MARTENS & SCHAWALLER, 1 ex. – MHNG: Nandana NE Pokhara, 1300 m, 11. X. 83, leg. LÖBL, 1 ex. – Manang Distr., below Tal, 1500 m, 19. IX. 83, leg. SMETANA & LÖBL, 1 ex.

Distribution: India, Nepal.

*Oenopia smetanai* n. sp. (figs 142–145)

Holotype (♂): Nepal, Kathmandu valley, Phulchoki, 2600 m, 21. IV. 1982, leg. SMETANA (MHNG).

Paratype (1 ex.): Nepal, Chame, 2200–2650 m, leg. DEHARVENG, 1 ex. (CC).

Description: Body oval, depressed. General colouration yellow with black spots. Head with two basal spots; pronotum with two oval discal spots converging



anteriorly; elytra with black suture gradually enlarging to an oval spot; on each elytron with three oval spots, the first one on the anterior third, the second on the posterior part of the disc, the third parapical with a pointed apex toward the external margin. Frons rectangular, clypeus not incavated. Interocular distance about twice the transverse diameter of the eye. Pronotum trapezoidal and bordered. Scutellum in shape of an obtusangular triangle, width one twelfth of elytral base. Elytra with a marginal border one fourth of elytral width. Femora not surpassing the elytral margin; tibiae with a small spur; claws with a basal tooth. Antennae 11-segmented, the club 2-segmented. Metacoxal lines of *Diomus*-type. Elytral epipleuron one tenth of elytral width, without grooves, gradually narrowing towards the apex. Prosternum with a well developed process between anterior coxae, with two subparallel carinae. Mesosternum with anterior margin weakly incavated; metasternum with a groove from which starts a thin, median, longitudinal line. Puncturation on the head almost invisible (X 50); on pronotum superficial and sparse, distance between points equal to 3 diameters of a point; on the elytra punctures twice as bigger as on pronotum, distance between points equal to 0.75–1.00 diameter. Head and pronotum with microreticulation. Metasternum sparsely punctured. Male genitalia as in figs 143–145.

Length: 2.80–3.00 mm.

*Oenopia diabolica* n. sp. (figs 146–147)

Holotype (♀): Nepal, Prov. Bagmati, below Thare Pati, 3500 m, 12. IV. 81, leg. LÖBL & SMETANA (MHNG).

Description: Body round oval, moderately convex, glabrous. General colouration reddish-yellow. Head with two small black basal spots. A black subtrapezoidal spot on pronotum with a deep emargination on the anterior margin; two black transverse stripes on the elytra, the first on the base, extended from the suture as far as from the lateral margin without touching it; the second on the disc, extended from the parasutural region almost to the lateral margin. Antennae, mouthparts and tibiae yellow; femora black with distal part yellow; trochanteres yellow. Head and pronotum shagreened; head with rare points; pronotum with rare, regular and superficial puncturation. Elytra shining, deeply and regularly punctured; distance between points equal to 1 diameter of a point. Frons in shape of a transverse rectangle, as wide as three times the transverse diameter of the eye. Eyes with canthus extended as far as the half of the eye. Antennae as long as three times the width of the frons, with eleven articles; first, second and fifth articles longer than the others. Antennal club gradually enlarged, composed of four articles. Elytra with small lateral margin, epipleura flat. Pronotum subtrapezoidal, with lateral margins weakly recurved. Scutellum triangular, with basis longer than the sides. Prosternal hypomera weakly excavated; prosternum with two thin carinae. Mesosternum incavated anteriorly. Metacoxal lines of *Diomus*-type, surrounding area thickly and roughly punctured. Female genitalia as in fig. 147.

Length: 3.15 mm.

*Oenopia (Protocaria) billieti* (Mulsant, 1853)

KAPUR, 1958, *Coccinella billieti*, p. 327.

IABLOKOFF-KHNZORIAN, 1982, *Oenopia billieti*, p. 410.

MIYATAKE, 1985, *Protocaria billieti*, p. 15.

Material (1 ex.) – **MHNG**: Manang Distr., forest W Bagarchhap, 2200 m, 21. IX. 83, leg. SMETANA & LÖBL, 1 ex.

Distribution: Northern India, Tibet, Nepal.

*Harmonia dimidiata* (Fabricius, 1781)

IABLOKOFF-KHNZORIAN, 1982, p. 484.

MIYATAKE, 1985, p. 21.

Material (10 ex.) – **SMNS**: Ulleri, Modi Khola valley, Birethanti, 1000 m, 14. VII. 1973, leg. MARTENS, 2 ex. – Kathmandu valley, Ganabahal and Baneshwar, 1350 m, 17–20. VII. 1983, leg. MARTENS & SCHAWALLER, 1 ex. – Nuwakot Distr., Trisuli, forest remnants, 600–650 m, 21–22. VII. 1983, leg. MARTENS & SCHAWALLER, 1 ex. – Dhading Distr., Thorpu to Kordunje, 1300–1400 m, 24. VII. 1983, leg. MARTENS & SCHAWALLER, 1 ex. – Gorkha/Dhading Distr., Buri Gandaki, Jagat to opposite Panshing, 1300–1650 m, 31. VII. 1983, leg. MARTENS & SCHAWALLER, 4 ex. – Gorkha Distr., Darondi Khola below Barpak to Doreni, 1100–900 m, 12. VIII. 1983, forest remnants, leg. MARTENS & SCHAWALLER, 1 ex.

Distribution: Nepal, northern India (Kashmir, Assam), Bhutan, China, Taiwan.

*Harmonia eucharis* (Mulsant, 1853)

IABLOKOFF-KHNZORIAN, 1982, p. 490.

Material (4 ex.) – **SMNS**: Parbat Distr., Tatopani to Sikha, 1400–2200 m, 10. VII. 1973, leg. MARTENS, 1 ex. – Ilam Distr., betw. Mai Pokhari, Mai Majuwa and Gitang Khola, 2100–1800 m, 26. VIII. 1983, leg. MARTENS & DAAMS, 1 ex. – Sankhua Sabha Distr., Arun valley S Mure, tree-rich cultural land, 1600–1900 m, 8. VI. 1988, leg. MARTENS & SCHAWALLER, 1 ex. – Sankhua Sabha Distr., Arun valley, Chichila, *Quercus* forest, bushes near village, 1900–2000 m, 18–20. VI. 1988, leg. MARTENS & SCHAWALLER, 1 ex.

Distribution: India, Himalayas, Burma, southern China.

*Micraspis inops* (Mulsant, 1866)

IABLOKOFF-KHNZORIAN, 1982, p. 511.

Material (11 ex.) – **SMNS**: Ilam Distr., N Ilam, 1250–1620 m, 25. III. 1980, leg. MARTENS & AUSOBSKY, 1 ex. – Ilam Distr., 5 km N Sanishare, feet of Siwalik Mts, 270–300 m, mixed *Shorea* forest, 3–5. IV. 1988, leg. MARTENS & SCHAWALLER, 10 ex.

Distribution: India, Burma, Thailand, Indonesia, New for Nepal.

*Micraspis univittata* (Hope, 1831)

IABLOKOFF-KHNZORIAN, 1982, p. 511.

Material (1 ex.) – **MHNG**: Prov. Bagmati, 4 km S Tarang Marang, 900 m, 28. IV. 81, leg. LÖBL & SMETANA, 1 ex.

Distribution: India, Nepal.

*Synonycha grandis* (Thunberg, 1781)

IABLOKOFF-KHNZORIAN, 1982, p. 531.

MIYATAKE, 1985, p. 22.

Material (1 ex.) – **SMNS**: Kathmandu valley, western part, 1300–1700 m, IX. 1969, leg. MARTENS, 1 ex.

Distribution: Widespread in the Oriental Region.

## 4.6. Subfamily Epilachninae

*Henosepilachna vigintioctopunctata* (Fabricius, 1775)

KAPUR, 1967, p. 152.

RICHARDS, 1983, p. 17.

Material (7 ex.) – SMNS: Kathmandu valley, western part, 17–19. II. 1974, leg. MARTENS, 1 ex. – Dhading Distr., Thorpu to Kordunje, 1300–1400 m, 24. VII. 1983, leg. MARTENS & SCHAWALLER, 1 ex. – Kathmandu valley, Baneshwar, 1400 m, cultural land, gardens, 23–26. VI. 1988, leg. MARTENS & SCHAWALLER, 2 ex. – Sankhua Sabha Distr., Arun valley bottom betw. Hedangna and Num, subtropical forest, 950–1000 m, 6–8. VI. 1988, leg. MARTENS & SCHAWALLER, 1 ex. – MHNG: Prov. Bagmati, 4 km S Tarang Marang, 900 m, 28. IV. 81, leg. LÖBL & SMETANA, 1 ex. – Prov. Bagmati, Kakani, 2200 m, 27. IV. 81, leg. LÖBL & SMETANA, 1 ex.

Distribution: India, Pakistan, Nepal, China, Taiwan, Macau, Hong Kong, Japan, northern Vietnam, Malaysia, Indonesia.

*Henosepilachna dodecastigma* (Wiedemann, 1823)

KAPUR, 1963, p. 6.

KAPUR, 1967, p. 150.

Material (16 ex.) – MHNG: Lamjung Distr., Tarku, 850 m, 16. IX. 83, leg. SMETANA & LÖBL, 5 ex. – Turture Dara, 800 m, 15. IX. 83, leg. SMETANA & LÖBL, 11 ex.

Distribution: Northeastern India (Sikkim), Tibet, Andamans Islands. New for Nepal.

*Henosepilachna vigintioctomaculata* (Motschoulsky, 1857)

L1 & COOK, 1961, p. 48.

SASAJI, 1971, p. 311.

Material (1 ex.) – MHNG: Manang Distr., Latha Manang, W Bagarchhap, 2350 m, 22. IX. 83, leg. SMETANA & LÖBL, 1 ex.

Distribution: Japan, China, Siberia. New for Nepal.

*Henosepilachna kathmanduensis* Miyatake, 1985

MIYATAKE, 1985, p. 23.

Material (2 ex.) – SMNS: Taplejung Distr., Yamputhin, cultural land, open forest, 1650–1800 m, 26. IV.–1. V. 1988, leg. MARTENS & SCHAWALLER, 1 ex. – Sankhua Sabha Distr., Arun valley betw. Hurure and Chichila, tree-rich cultural land, 2000 m, 17. VI. 1988, leg. MARTENS & SCHAWALLER, 1 ex.

Distribution: Nepal.

*Henosepilachna ocellata* (Redtenbacher, 1844)

KAPUR, 1950, p. 18.

MIYATAKE, 1967, p. 70.

Material (1 ex.) – SMNS: Taplejung Distr., Kabeli Khola, Yamputhin, 1650–1800 m, cultural land, bushes, 3–4. IX. 1983, leg. MARTENS & DAAMS, 1 ex.

Distribution: Kashmir, Nepal.



*Henosepilachna laesicollis* (Mulsant, 1850) **n. comb.**

DIEKE, 1947, *Epilachna laesicollis*, p. 95.

JADWISZCZAK, 1989, *Epilachna laesicollis*, p. 738.

Material (1 ex.) – SMNS: Sankhua Sabha Distr., Arun valley, S Mure, tree-rich cultural land, 1600–1900 m, 8. VI. 1988, leg. MARTENS & SCHAWALLER, 1 ex.

Distribution: Northern India (Darjeeling, Sikkim), northern Bengal (Kurseong). New for Nepal.

*Epilachna hopeiana* Miyatake, 1985

MIYATAKE, 1985, p. 28.

Material (4 ex.) – SMNS: Kathmandu valley, Baneshwar, 1400 m, cultural land, gardens, 23–26. VI. 1988, leg. MARTENS & SCHAWALLER, 4 ex.

Distribution: Nepal.

*Epilachna* (?) *schawalleri* **n. sp.** (figs 138–141)

Holotype (♂): Nepal, Gorkha Distr., Darondi Khola below Barpak to Doreni, 1100–900 m, 12. VIII. 1983, forest remnants, leg. MARTENS & SCHAWALLER (SMNS).

Description: Round oval, convex, highest at the center of the body. General colouration reddish. Pronotum with a heart-form black spot on the disc. Elytra with 6 black spots disposed as in *E. maculicollis*. Spot 2 on the humeral callus, spots 1 and 5 on the suture, fused with the lateral ones; spot 3 on the disc, of trapezoidal form. Metasternum black, metepisterna red; legs red. Head moderately and sparsely punctured; eyes finely faceted. Pronotum twice as wide as long, strongly emarginate on the anterior part; anterior corners acute, posterior obtuse. Elytra with humeral callus prominent, lateral margins reflected; elytral epipleura almost reaching the elytral apex. Scutellum triangular, about as long as wide, 10 times smaller than the elytral basis. Antennae as long as the head's width, with 3-segmented club. Femora and tibiae slender; tarsal claws double, without tooth. Punctuation of pronotum fine and dense; of the elytra double with fine and very superficial punctures on the ground and with other coarser, deep and irregularly disposed punctures. First abdominal sternite with complete femoral lines, extended to four fifths of the segment length. Male genitalia as in figs 139–141.

Length: 4.00 mm; width 3.30 mm.

Remarks: I refer this species tentatively to *Epilachna* because the morphology of the female genitalia is unknown.

*Afidentula bisquadripunctata* (Gyllenhal, 1808)

Material (1 ex.) – SMNS: Mustang Distr., Dana to Tatopani, 1500–1300 m, 3. V. 1980, leg. MARTENS & AUSOBSKY, 1 ex.

Distribution: China, India, Sri Lanka. New for Nepal.

*Afidentula himalayana* Kapur, 1963

KAPUR, 1963, p. 12.

PANG & MAO, 1979, p. 123.

MIYATAKE, 1967, p. 71.

Material (9 ex.) – SMNS: Taplejung Distr., Yamputhin, ascent to pass Deorali, 2100–2600 m, cultural land, bushes, 16. V. 1988, leg. MARTENS & SCHAWALLER, 1 ex. – Sankhua Sabha Distr., above Pahakhola, *Quercus semecarpifolia*-*Rhododendron*, 2600–2800 m, 3. VI. 1988, leg. MARTENS & SCHAWALLER, 1 ex. – MHNG: Kosi, range S Mangsingma, 2800 m, 8. IV. 84, leg. LÖBL & SMETANA, 1 ex. – Kosi, Induwa Kola, 2000–2850 m, IV. 1984, leg. LÖBL & SMETANA, 4 ex. – Kosi, range NE Mangmaya, 2800 m, 7. IV. 84, leg. LÖBL & SMETANA, 2 ex.

Distribution: Northern India (Sikkim), China. New for Nepal.

*Afidentula manderstjernaе* (Mulsant, 1853)

KAPUR, 1958, p. 325.

PANG & MAO, 1979, p. 122.

Material (10 ex.) – SMNS: Dhading Distr., W Samari Banjang/Topal Khola, 1000–1200 m, 23. VII. 1983, cultural land, leg. MARTENS & SCHAWALLER, 1 ex. – Taplejung Distr., Kabeli Khola, Yamputhin, 1650–1800 m, 3–4. IX. 1983, leg. MARTENS & DAAMS, 1 ex. – Taplejung Distr., Gunsa Khola betw. Kibla and Amjilesa, 2600–2400 m, 12. IX. 1983, leg. MARTENS & DAAMS, 1 ex. – Ilam Distr., Gitang Khola valley, *Ahnus*-forest along river, 1750 m, 11–13. IV. 1988, leg. MARTENS & SCHAWALLER, 1 ex. – Taplejung Distr., above Yamputhin, left bank of Kabeli Khola, bushes, open forest, 1800–2000 m, 27–29. IV. 1988, leg. MARTENS & SCHAWALLER, 1 ex. – Taplejung Distr., upper Tamur valley from Lungthung/waterfall to bamboo bridge, 1800–2150 m, open forest, bushes, 19. V. 1988, leg. MARTENS & SCHAWALLER, 1 ex. – Sankhua Sabha Distr., between Pahakhola and Karmarang, open forest, bushes, 2300–1800 m, 4. VI. 1988, leg. MARTENS & SCHAWALLER, 1 ex. – Sankhua Sabha Distr., Arun valley betw. Mure and Hurure, mixed broadleaved forest, 2050–2150 m, 9–17. VI. 1988, leg. MARTENS & SCHAWALLER, 2 ex. – Sankhua Sabha Distr., Arun valley, Chichila, *Quercus*-forest, bushes near village, 1900–2000 m, 18–20. VI. 1988, leg. MARTENS & SCHAWALLER, 1 ex.

Distribution: Northern India (Sikkim), northern Bengal, Burma, China. New for Nepal.

*Afissa bengalica* (Dieke, 1947)

KAPUR, 1963, p. 9.

JADWISZCZAK, 1989, *Epilachna bengalica*, p. 740.

Material (4 ex.) – SMNS: Talejung Distr., Kabeli Khola, Yamputhin, 1650–1800 m, cultural land, 3–4. IX. 1983, leg. MARTENS & DAAMS, 1 ex. – Taplejung Distr., Kabeli Khola, N Yamputhin, 1700–2200 m, 5. IX. 1983, leg. MARTENS & DAAMS, 1 ex. – Taplejung Distr., lower Gunsa Khola to Lungthung, open forest, bushes, 1650–1870 m, 18. V. 1988, leg. MARTENS & SCHAWALLER, 1 ex. – MHNG: Parbat Distr., Sikha, 1800–2200 m, 25. IX. 77, leg. DEHARVENG, 1 ex.

Distribution: India (Sikkim, western Bengal), Burma, Bhutan. New for Nepal.

*Afissa hingstoni* Kapur, 1963

KAPUR, 1963, p. 10.

BIELAWSKI, 1972, *Epilachna hingstoni*, p. 285.

MIYATAKE, 1985, *Epilachna hingstoni*, p. 25.

Material (9 ex.) – SMNS: Ilam Distr., Gitang Khola, 1900–2100 m, 31. III. 1980, leg. MARTENS & AUSOBSKY, 1 ex. – Ascent to Ting Sang La from Bikuti, 1000–1900 m, 11–12. IV. 73, leg. MARTENS, 1 ex. – Taplejung Distr., Omje Kharka NW Yamputhin, mature mixed broadleaved forest, 2300–2500 m, 1–6. V. 1988, leg. MARTENS & SCHAWALLER, 6 ex. – MHNG: Mustang Distr., 2 km N Kalopani, 2550 m, 1. X. 83, leg. SMETANA & LÖBL, 1 ex.

Distribution: Tibet, India, Nepal.

*Afissa dumerili* (Mulsant, 1850)

KAPUR, 1967, p. 154.

BIELAWSKI, 1972, *Epilachna dumerili*, p. 286.

MIYATAKE, 1985, *Epilachna dumerili*, p. 25.

JADWISZCZAK, 1989, *Epilachna dumerili*, p. 739.

Material (7 ex.) – SMNS: Ilam Distr., 5 km N Sanishare, feet of Siwalik Mts, 270–300 m, mixed *Shorea* forest, 3–5. IV. 1988, leg. MARTENS & SCHAWALLER, 4 ex. – MHNG: Khandbari Distr., Dunge Dara N Tumlingtar, 1100 m, 23. III. 82, leg. SMETANA, 2 ex. – Kosi, Kuwapani, Chichila, 2300–2100 m, 24. IV. 1984, leg. LÖBL & SMETANA, 1 ex.

Distribution: Nepal, Burma, India, Thailand, Sri Lanka.

*Afissa hendecaspilota* (Mader, 1927)

BIELAWSKI, 1964, p. 257.

Material (1 ex.) – SMNS: Taplejung Distr., lower Gunga Khola to Lungthung, open forest, bushes, 1650–1870 m, 18. V. 1988, leg. MARTENS & SCHAWALLER, 1 ex.

Remarks: This species was described under the genus *Epilachna* Dejean, but because of the shape of sternite IX of the female it belongs to the genus *Afissa* Dieke.

Distribution: Sri Lanka, India, Burma, Thailand, Taiwan, China. New for Nepal.

*Afissa nielamuensis* (Pang & Mao, 1977) n. comb.

PANG & MAO, 1977, *Epilachna nielamuensis*, p. 323.

MIYATAKE, 1985, *Epilachna nielamuensis*, p. 30.

JADWISZCZAK, 1989, *Epilachna nielamuensis*, p. 738.

Material (4 ex.) – SMNS: Parbat Distr., betw. Sikha and Ghorapani, 2000–2800 m, 11. VII. 1973, leg. MARTENS, 1 ex. – Parbat Distr., ascent to Gorapani from Sikha, 2200–2600 m, 11. VII. 1973, leg. MARTENS, 2 ex. – Sankhua Sabha Distr., between Pahakhola and Karmarang, open forest, bushes, 2300–1800 m, 4. VI. 1988, leg. MARTENS & SCHAWALLER, 1 ex.

Remarks: For this species and the following species attributed to the genus *Afissa* Dieke see the previous remarks.

Distribution: Tibet, Nepal.

*Afissa gorkhana* (Miyatake, 1985) n. comb.

MIYATAKE, 1985, *Epilachna gorkhana*, p. 26.

Material (8 ex.) – SMNS: Kathmandu valley, Sheopuri Mt., degraded forest, bushes, 1700–2100 m, 25. VI. 1988, leg. MARTENS & SCHAWALLER, 1 ex. – Taplejung Distr., Yamputhin, cultural land, open forest, 1650–1800 m, 26. IV.–1.V. 1988, leg. MARTENS & SCHAWALLER, 4 ex. – Sankhua Sabha Distr., betw. Pahakhola and Karmarang, open forest, bushes, 2300–1800 m, 4. VI. 1988, leg. MARTENS & SCHAWALLER, 1 ex. – Sankhua Sabha Distr., between Pahakhola and Karmarang, cultural land, bushes, 1800–1500 m, 4. VI. 1988, leg. MARTENS & SCHAWALLER, 1 ex. – Sankhua Sabha Distr., below Karmarang to Hedangna, tree-rich cultural land, 950–1350 m, 5. VI. 1988, leg. MARTENS & SCHAWALLER, 1 ex.

Remarks: Because of the shape of the abdominal sternite IX of the female this species belongs to the genus *Afissa*.

Distribution: Nepal.

Tab. 1. List of the treated species of Coccinellidae from Nepal with the altimetric data and chorological category. – *Abbreviations*: *E* = endemic (9 species), *H* = Himalayan (41 species), *NA* = North Asiatic (3 species), *PA* = Palearctic (2 species), *SA* = South Asiatic (31 species), *WA* = West Asiatic (1 species), *n. sp.* = new species (27 species).

Species	Vertical distribution [m]	Chorology
<i>Jauravia quadrinotata</i>	1350–1900	H
<i>Jauravia limbata</i>	900–1500	SA
<i>Sticholotis duodecimpunctata</i>	1600–2300	H
<i>Sticholotis decempunctata</i>	1000–2000	H
<i>Sticholotis nepalensis</i>	2650	E
<i>Sticholotis kumatai</i>	2650	E
<i>Sticholotis duodecimmaculata</i>	1800–2150	n. sp.
<i>Sticholotis rufolimbata</i>	1100–1600	n. sp.
<i>Ghanius schawalleri</i>	2400–3400	n. sp.
<i>Pseudoscymnus funerarius</i>	2100–2300	n. sp.
<i>Pseudoscymnus ocelliferus</i>	2100–2200	n. sp.
<i>Pseudoscymnus luteoniger</i>	950–1000	n. sp.
<i>Pseudoscymnus nepalicus</i>	900–1250	E
<i>Scymnus nubilus</i>	530–2550	WA
<i>Scymnus trisulicus</i>	2000	n. sp.
<i>Scymnus sufflavus</i>	2250	n. sp.
<i>Scymnus tristigmaticus</i>	1330	H
<i>Scymnus (Pullus) mellinus</i>	2100–2800	n. sp.
<i>Scymnus (Pullus) besucheti</i>	2400–3000	H
<i>Scymnus (Pullus) posticalis</i>	600–1350	SA
<i>Scymnus (Pullus) nepalensis</i>	900–2800	E
<i>Scymnus (Pullus) bourdilloni</i>	270–2800	H
<i>Scymnus (Pullus) victoris</i>	270–300	SA
<i>Scymnus (Pullus) hepaticus</i>	1800–3100	n. sp.
<i>Scymnus (Pullus) godavariensis</i>	750–900	E
<i>Scymnus (Pullus) sodalis</i>	1800	SA
<i>Scymnus (Pullus) rufoniger</i>	1350–1850	n. sp.
<i>Scymnus (Pullus) schawalleri</i>	2700	n. sp.
<i>Scymnus (Pullus) martensi</i>	1350–1850	n. sp.
<i>Scymnus (Pullus) exilis</i>	1100–1200	n. sp.
<i>Scymnus (Pullus) fruticis</i>	1800–2300	n. sp.
<i>Scymnus (Pullus) lucicolus</i>	2300	n. sp.
<i>Scymnus (Pullus) kosianus</i>	1100	n. sp.
<i>Scymnus (Pullus) suturaloides</i>	3300	n. sp.
<i>Scymnus (Neopullus) fuscatus</i>	270–300	SA
<i>Scymnus (Orthoscymnus) smetanai</i>	2250–2500	n. sp.
<i>Scymnus (Orthoscymnus) rhododendri</i>	2600–2800	n. sp.
<i>Hyperaspis marginaloides</i>	2700	n. sp.
<i>Cryptogonus orbiculus</i>	1200–1850	SA
<i>Cryptogonus postmedialis</i>	1250–1500	H
<i>Cryptogonus ariasi</i>	270–2000	H
<i>Cryptogonus bimaculatus</i>	600	SA
<i>Cryptogonus complexus</i>	950–1350	H
<i>Cryptogonus nepalensis</i>	1650–2300	E
<i>Platynaspidius saundersi</i>	700–800	H
<i>Platynaspis ocellimaculata</i>	750–900	SA
<i>Platynaspis nepalensis</i>	2200–2600	n. sp.
<i>Chilocorus circumdatus</i>	1850–2000	SA
<i>Chilocorus nigrinus</i>	1000	SA
<i>Chilocorus bijugus</i>	850	H
<i>Priscibrumus uropygialis</i>	2600	H
<i>Priscibrumus disjunctus</i>	3100–4150	n. sp.
<i>Brumoides lineatus</i>	800	SA
<i>Brumoides suturalis</i>	470–2600	SA
<i>Lithophilus lindemannae</i>	2800–3300	H
<i>Sumnius renardi</i>	1000–1350	H
<i>Sumnius tanhboensis</i>	500–800	SA



Tab. 1. (continued)

Species	Vertical distribution [m]	Chorology
<i>Summus hoangi</i>	1100–2000	n. sp.
<i>Rodolia octoguttata</i>	950–1350	H
<i>Menochilus sexmaculatus</i>	240–1300	SA
<i>Adalia tetraspilota</i>	2700	H
<i>Propylea dissecta</i>	2400–2600	H
<i>Propylea luteopustulata</i>	270–2100	SA
<i>Bothrocalvia decemsignata</i>	1050	SA
<i>Calvia sykesi</i>	1900–2000	H
<i>Calvia breiti</i>	2000–3350	H
<i>Halyzia sanscrita</i>	2800	H
<i>Halyzia straminea</i>	2100–2300	H
<i>Lemnia biplagiata</i>	800–1200	SA
<i>Lemnia bissellata</i>	1600–2000	SA
<i>Alloneda dodecaspilota</i>	950–1800	SA
<i>Illeis bistigmata</i>	1100–1400	SA
<i>Hippodamia arctica</i>	2600	NA
<i>Hippodamia variegata</i>	600–4000	PA
<i>Coccinella septempunctata</i>	270–4500	PA
<i>Coccinella magnopunctata</i>	3050–3600	NA
<i>Coccinella luteopicta</i>	3000–3800	H
<i>Coccinella transversalis</i>	270–1500	SA
<i>Oenopia signatella</i>	2150–2250	H
<i>Oenopia sexareata</i>	560–2300	SA
<i>Oenopia sauzeti</i>	900–1400	SA
<i>Oenopia mimica</i>	950–2150	H
<i>Oenopia smetanai</i>	2200–2650	n. sp.
<i>Oenopia diabolica</i>	3500	n. sp.
<i>Oenopia billieti</i>	2200	H
<i>Harmonia dimidiata</i>	600–1650	SA
<i>Harmonia eucharis</i>	1400–2100	H
<i>Micraspis inops</i>	270–300	SA
<i>Micraspis univittata</i>	900	H
<i>Synonycha grandis</i>	1300–1700	SA
<i>Henosepilachna vigintioctopunctata</i>	900–2200	SA
<i>Henosepilachna vigintioctomaculata</i>	2350	NA
<i>Henosepilachna dodecastigma</i>	800–850	H
<i>Henosepilachna kathmanduensis</i>	1650–2000	E
<i>Henosepilachna ocellata</i>	1650–1800	H
<i>Henosepilachna laesicollis</i>	1600–1900	H
<i>Epilachna hopeiana</i>	1400	E
<i>Epilachna schawalleri</i>	900–1100	n. sp.
<i>Afidentula bisquadripunctata</i>	1300–1500	SA
<i>Afidentula himalayana</i>	2000–2800	H
<i>Afidentula manderstjernae</i>	1650–2600	H
<i>Afissa bengalica</i>	1650–2200	H
<i>Afissa hingstoni</i>	1000–2550	H
<i>Afissa dumerili</i>	270–2300	SA
<i>Afissa hendecaspilota</i>	1650–1870	SA
<i>Afissa nielamuensis</i>	1800–2600	H
<i>Afissa gorkhana</i>	950–2300	E
<i>Afissa elvina</i>	2700	H
<i>Afissa marginicollis</i>	2600–2800	H
<i>Afissa mysticoides</i>	2050–2800	H
<i>Afissula rana</i>	1400–2500	H
<i>Afissula parvula</i>	2400–2600	H
<i>Afissula sanscrita</i>	1800–2500	H
<i>Afissula kambaitana</i>	2000–2600	SA

*Afissa elvina* (Mulsant, 1853)

DIEKE, 1947, p. 143.

Material (1 ex.) – MHNG: Prov. Bagmati, Pokhare NW Barahbise, 2700 m, 2. V. 81, leg. LÖBL &amp; SMETANA, 1 ex.

Distribution: Northern India. New for Nepal.

*Afissa marginicollis* (Hope, 1831)

KAPUR, 1958, p. 315.

MIYATAKE, 1967, *Epilachna marginicollis*, p. 69.JADWISZCZAK, 1989, *Epilachna marginicollis*, p. 738.Material (18 ex.) – SMNS: Sankhua Sabha Distr., above Pahakhola, *Quercus semecarpifolia-Rhododendron*, 2600–2800 m, 3. VI. 1988, leg. MARTENS & SCHAWALLER, 1 ex. – MHNG: Lalitpur Distr., Phulcoki, 2650 m, 14. X. 83, leg. SMETANA & LÖBL, 17 ex.

Distribution: India, Nepal, Burma.

*Afissula mysticoides* (Sicard, 1912)

PANG &amp; MAO, 1979, p. 129.

MIYATAKE, 1985, p. 25.

Material (6 ex.) – SMNS: Taplejung Distr., Gunsu Khola betw. Kibla and Amjilesa, 2600–2400 m, mixed forest, 12. IX. 1983, leg. MARTENS & DAAMS, 3 ex. – Taplejung Distr., upper Tamur valley below Walungchung Gola, 2400–2700 m, mixed forest, open river bank, 20. V. 1988, leg. MARTENS & SCHAWALLER, 1 ex. – Sankhua Sabha Distr., above Pahakhola, *Quercus semecarpifolia-Rhododendron*, 2600–2800 m, 3. VI. 1988, leg. MARTENS & SCHAWALLER, 1 ex. – Sankhua Sabha Distr., Arun valley betw. Mure and Hurure, mixed broad-leaved forest, 2050–2150 m, 9–17. VI. 1988, leg. MARTENS & SCHAWALLER, 1 ex.

Distribution: India, Nepal, China.

*Afissula rana* Kapur, 1958

KAPUR, 1958, p. 320.

PANG &amp; MAO, 1979, p. 124.

MIYATAKE, 1985, p. 25.

JADWISZCZAK, 1989, p. 741.

Material (15 ex.) – SMNS: Thakkhola, betw. Lethe and Ghasa, 2150–2450 m, 9. VII. 1973, leg. MARTENS, 4 ex. – Parbat Distr., betw. Ghandrung and Landrung, 1400–1500 m, 8. V. 1980, leg. MARTENS & AUSOBSKY, 2 ex. – Gorkha Distr., Buri Gandaki, Nyak to lower Chuling Khola, 2450–2870 m, *Pinus excelsa*, 2. VIII. 1983, leg. MARTENS & SCHAWALLER, 1 ex. – Taplejung Distr., Omje Kharka NW Yamputhin, mature mixed broadleaved forest, 2300–2500 m, 1–6. V. 1988, leg. MARTENS & SCHAWALLER, 1 ex. – MHNG: Kosi, forest NE Kuwapani, 2350 m, 5. IV. 84, leg. LÖBL & SMETANA, 1 ex. – idem, 7. IV. 84, 2 ex. – Manang Distr., Latha Manang W Bagarchap, 2350 m, 18–22. IV. 1983, leg. LÖBL & SMETANA, 6 ex.

Distribution: Nepal, China.

*Afissula parvula* (Crotch, 1874)

MIYATAKE, 1967, p. 71.

JADWISZCZAK, 1989, p. 741.

Material (1 ex.) – SMNS: Taplejung Distr., Gunsu Khola betw. Kibla and Amjilesa, 2600–2400 m, mixed forest, 12. IX. 1983, leg. MARTENS &amp; DAAMS, 1 ex.

Distribution: Northern India (Darjeeling). New for Nepal.





Fig. 148. Altimetric distribution.

*Afissula sanscrita* (Crotch, 1874)

KAPUR, 1963, p. 12.

PANG & MAO, 1979, p. 128.

JADWISZCZAK, 1989, p. 741.

Material (3 ex.) – SMNS: Parbat Distr., betw. Ghandrung and Landrung, 1400–1500 m, 8. V. 1980, leg. MARTENS & AUSOBSKY, 1 ex. – Taplejung Distr., Omje Kharka NW Yamputhin, mature mixed broadleaved forest, 2300–2500 m, 1–6. V. 1988, leg. MARTENS & SCHAWALLER, 1 ex. – Sankhua Sabha Distr., between Pahakhola and Karmarang, open forest, bushes, 2300–1800 m, 4. VI. 1988, leg. MARTENS & SCHAWALLER, 1 ex.

Distribution: India (Sikkim), Tibet, China. New for Nepal.

*Afissula kambaitana* (Bielawski, 1966)

BIELAWSKI, 1966, *Afilachna kambaitana*, p. 793.

PANG & MAO, 1979, p. 127.

Material (1 ex.) – MHNG: Kosi, Induwa Kola valley, 2000–2600 m, 16–18. IV. 1984, leg. LÖBL & SMETANA, 1 ex.

Distribution: Burma, China. New for Nepal.

## 5. Distribution

Until 1985, 82 species of Coccinellidae have been published from Nepal (see list in chapter 3.). The material treated herein, deposited in the Geneva and Stuttgart museums, enlarges significantly our knowledge, it contains more than 600 specimens of 114 species. 27 species are new to science and 36 species are recorded for the first time from Nepal. The list of these species with the altimetric data and the chorological category is given in tab. 1. The altimetric distribution is summarized in fig. 148. The Himalayan, endemic and new species are predominant over an altitude of 1000 m, while at lower altitudes the South Asiatic species are prevalent. Further collections may alter these data.

## 6. References

- AHMAD, R. (1973): A new tribe of the family Coccinellidae (Coleoptera). – Bull. ent. Res. **62**: 449–452; London.
- BIELAWSKI, R. (1959): Beiträge zur Kenntnis der Coccinelliden von Afghanistan II. (Coleoptera). – Ent. Tidskr. **80**: 98–113; Stockholm.
- (1964): Über drei Arten aus der Verwandtschaft von *Epilachna flavicollis* (Thbg.) (Coleoptera Coccinellidae). – Bull. Acad. pol. Sci. (II) **12**: 255–262; Varsovie.
- (1966): Eine neue Gattung und Art der Epilachninae aus Burma (Coleoptera Coccinellidae). – Bull. Acad. pol. Sci. (II) **14**: 793–795; Varsovie.
- (1971): Über Coccinellidae (Coleoptera) aus Nepal. – Khumbu Himal **1**: 1–9; Innsbruck.
- (1972): Die Marienkäfer (Coleoptera: Coccinellidae) aus Nepal. – Fragm. Faun. **18**: 283–312; Warszawa.
- CANEPARI, C. (1986): Su alcuni Coccinellidi dell'India e Nepal settentrionale del Museo di Storia naturale di Ginevra (Coleoptera Coccinellidae). – Revue suisse Zool. **93**: 21–36; Genève.
- DIEKE, G. H. (1947): Ladybeetles of the genus *Epilachna* (sens. lat.) in Asia, Europe and Australia. – Smithsonian misc. Collns **106**: 1–183; Washington.
- FÜRSCH, H. (1960): Zwei neue *Tetrabrachys*-Arten (Col. Cocc.). – Mitt. münch. ent. Ges. **50**: 64–67; München.
- HOANG, D. N. (1980): Some new species of Lady-Beetles to the subfamily Coccidulinae (Coccinellidae, Coleoptera) in VietNam. – Tạp chí Sinh Vât Hoc **2**: 8–13; Hanoi. [in Vietnamese with English summary]
- (1982): A new tribe of Coccidulinae (Coleoptera, Coccinellidae). – Animal world of Vietnam, p. 137–140; Moscow (Nauka). [in Russian]
- HOPE, F. W. (1831): Synopsis of the new species of Nepal Insects in the collection of Major General HARDWICKE. – Zool. Misc. **1**: 21–32; London.
- IABLOKOFF-KHNZORIAN, S. M. (1972): Les types de Coccinellidae de la Collection Motschulsky (Coléoptères Coccinellidae). – Nouv. Revue Ent. **2**: 163–184; Paris.
- (1974): Monographie der Gattung *Lithophilus* Froelich (Col. Coccinellidae). – Ent. Arb. Mus. Frey **25**: 148–243; Tutzing.
- (1976): Die paläarktischen Genera der Marienkäfer-Tribus Scymnini nebst Bemerkungen über *Scymnus fuscatus* (Coleoptera Coccinellidae). – Ent. germ. **2**: 374–380; Stuttgart.
- (1982): Les Coccinelles. Coléoptères-Coccinellidae. – 568 pp., 104 figs; Paris (Boubée).
- JADWISZCZAK, A. (1989): Studies on the Oriental Epilachninae (Coleoptera, Coccinellidae). – Polskie Pismo ent. **58**: 733–744; Wroclaw.
- KAPUR, A. P. (1946): A revision of the genus *Jauravia* Mots. (Coleoptera Coccinellidae). – Ann. Mag. nat. Hist. (Ser. 11) **13**: 73–93; London.
- (1948): A revision of the tribe Aspidimerini Weise (Coleoptera-Coccinellidae). – Trans. R. ent. Soc. Lond. **99**: 77–128; London.
- (1950): A note on *Epilachna ocellata* Redt. (Coleoptera: Coccinellidae), with descriptions of three species hitherto confused with it. – Rec. Indian Mus. **48**: 17–29; Calcutta.

- (1958): Coccinellidae of Nepal. – Rec. Indian Mus. 53: 309–338; Calcutta.
  - (1963): The Coccinellidae of the third Mount Everest Expedition, 1924 (Coleoptera). – Bull. Br. Mus. nat. Hist. (Ent.) 14: 1–48; London.
  - (1967): The Coccinellidae of the Andanamans. – Proc. natn. Inst. Sci. India (B) 32: 148–189; Calcutta.
  - (1973): On a collection of Lady-bird Beetles (Coccinellidae, Coleoptera) from Bhutan. – Orient. Insects 7: 457–460; Delhi.
- KOVÁŘ, I. (1995): Revision of the genera *Brumus* Muls. and *Exochomus* Redt. (Coleoptera, Coccinellidae) of the Palaearctic Region. Part I. – Acta ent. Mus. natn. Pragae 44: 5–124; Prague.
- LI, C. S. & COOK, E. F. (1961): The Epilachninae of Taiwan (Col.: Coccinellidae). – Pacif. Insects 3: 31–91; Honolulu.
- MADER, L. (1955): Evidenz der palaearktischen Coccinelliden und ihrer Aberrationen in Wort und Bild. II. Teil. – Ent. Arb. Mus. Frey 6: 764–1035; Tutzing.
- MIYATAKE, M. (1967): Notes on some Coccinellidae from Nepal and Darjeeling District of India (Coleoptera). – Trans. Shikoku ent. Soc. 9: 69–78; Shikoku.
- (1970): The East-Asian Coccinellid-Beetles preserved in the California Academy of Sciences. Tribe Chilacorini. – Mem. Coll. Agric. Ehime Univ. 14: 303–340; Shikoku.
  - (1985): Coccinellidae collected by the Hokkaido University Expeditions to Nepal Himalaya, 1968 (Coleoptera). – Insecta matsum. 30: 1–33; Sapporo.
- PANG, X. F. (1984): *Scymnus (Pullus) posticalis* Sicard. – Nat. Enemies Ins. 6: 253–254; Beijing. [in Chinese]
- PANG, X. F. & GORDON, R. D. (1984): Lectotype designations and new synonymy in Oriental Scymnini (Coleoptera: Coccinellidae). – Coleopta Bull. 38: 131–135; New York.
- PANG, X. F. & MAO, J. L. (1977): Notes on the Epilachninae of Tibet Autonomous Region (Coleoptera: Coccinellidae). – Acta ent. sin. 20: 323–328; Beijing. [in Chinese with English summary]
- (1979): Coleoptera Coccinellidae, II. – Khongguo Jingi Kunchang Zhi 14: 1–170; Beijing. [in Chinese]
- RICHARDS, A. M. (1983): The *Epilachna vigintioctopunctata* complex (Coleoptera: Coccinellidae). – Int. J. Ent. 25: 11–41; Honolulu.
- SASAJI, H. (1971): Fauna Japonica. Coccinellidae. – 340 pp., 16 pl.; Tokyo (Keigaku).
- SICARD, A. (1910): Espèces et variétés nouvelles de Coccinellides de l'Inde appartenant à la collection de M. ANDREWES (de Londres). – Ann. Soc. ent. Fr. 79: 377–389; Paris.
- VANDEMBERG, N. & GORDON, R. D. (1991): Farewell to *Pania* Mulsant (Coleoptera: Coccinellidae); a new synonymy of *Propylea* Mulsant. – Coccinella 3: 30–35; Passau.
- WEISE, J. (1910): Chrysomeliden und Coccinelliden. – Verh. naturf. Ver. Brünn 48: 25–53; Brünn.

Author's address:

Dr. CLAUDIO CANEPARI, Via Venezia 1, I-20097 San Donato Milanese, Italy.

# ZOBODAT - [www.zobodat.at](http://www.zobodat.at)

Zoologisch-Botanische Datenbank/Zoological-Botanical Database

Digitale Literatur/Digital Literature

Zeitschrift/Journal: [Stuttgarter Beiträge Naturkunde Serie A \[Biologie\]](#)

Jahr/Year: 1997

Band/Volume: [565\\_A](#)

Autor(en)/Author(s): Canepari Claudio Claudio

Artikel/Article: [Coccinellidae \(Coleoptera\) from the Nepal Himalayas 1-65](#)