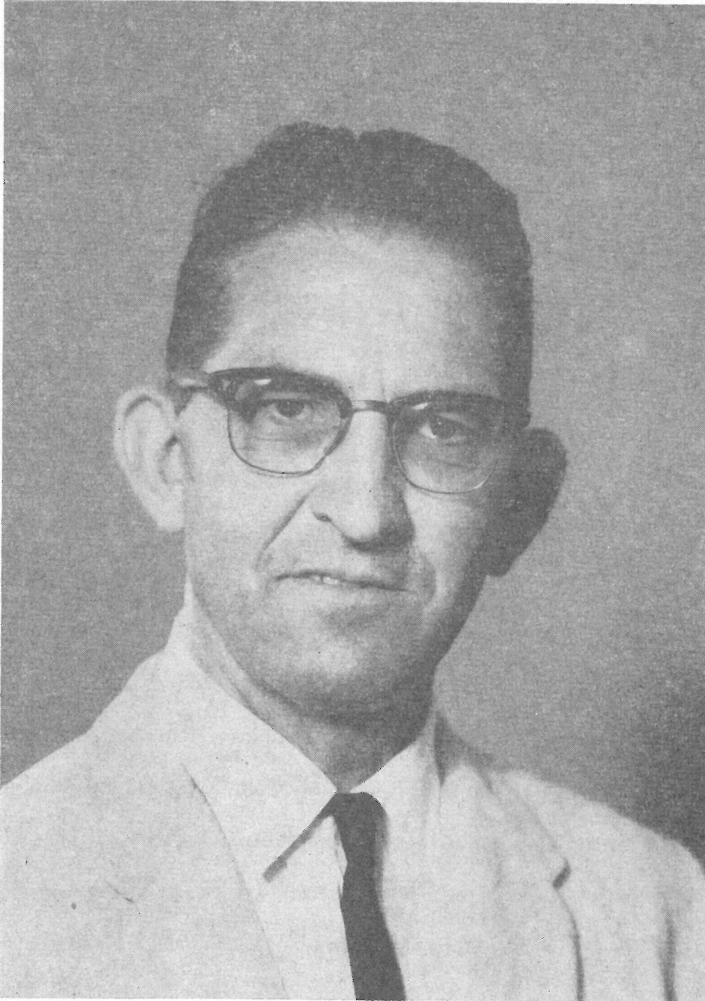


Beitr. Ent., Berlin 31 (1981) 1, S. 3–11



Zum 67. Geburtstag (3. 9. 1981):
D. Elmo Hardy
Sr. Professor & Sr. Entomologist

University of Hawaii at Manoa, College of Tropical Agriculture, Department of Entomology, Hawaii, seit 1964 Mitglied des erweiterten Redaktionskollegiums der „Beiträge zur Entomologie“

1*

List of Publications by D. ELMO HARDY

1. 1936. A New Bibionidae from Utah. Proc. Utah Acad. Sci. 8: 195.
2. 1937. New Bibionidae from Nearctic America. Proc. Utah Acad. Sci. 9: 199–213, 22 figs.
3. 1938. New Therevidae from Utah. Annals Ent. Soc. Amer. 31: 144–146, 3 figs.
4. 1938. New Bibionidae from British Columbia. Canadian Entomologist 70: 207 to 210, 10 figs.
5. 1938. Blood Sucking Utah Diptera. Proc. Utah Acad. Sci. 15: 103–105, 1 fig. [Co-author with KNOWLTON, G. F. & HARMSTON F. C.].
6. 1939. New and Little Known Utah Pipunculidae. Canadian Entomologist 71: 87–91, 18 figs.
7. 1939. New Nearctic Pipunculidae. Journ. Kansas Ent. Soc. 12: 16–25, 19 figs.
8. 1939. New and Little Known Western Pipunculidae. Annals Ent. Soc. Amer. 32: 113–123, 32 figs.
9. 1940. Studies in New World Plecia, Part I. Journ. Kansas Ent. Soc. 13: 15–27, 33 figs.
10. 1940. Dorilaidae Notes and Descriptions. Journ. Kansas Ent. Soc. 13: 101–114, 2 pls., 44 figs.
11. 1942. Leafhopper Abundance. Journ. Kansas Ent. Soc. 15: 34.
12. 1942. New Western Asilidae. Journ. Kansas Ent. Soc. 15: 57–61, 11 figs.
13. 1942. Studies in New World Plecia, Part II. Canadian Entomologist 74: 105–116.
14. 1942. Description and Figures of *Cyrtopogon albifacies* JOHNSON. Great Basin Nat. 3: 2–4, 4 figs.
15. 1942. Studies in New World *Philia* (Bibionidae), Part I. Journ. Kansas Ent. Soc. 15: 127–134, 11 figs.
16. 1942. Notes on Diptera in Snow Entomological Collection. Journ. Kansas Ent. Soc. 15: 142–143.
17. 1943. New Therevidae and Asilidae in the Snow Entomological Collection. Journ. Kansas Ent. Soc. 16: 24–29, 9 figs.
18. 1943. Studies in *Phyllomydas* (Mydidae Diptera). Journ. Kansas Ent. Soc. 16: 50–52.
19. 1943. Revision of Nearctic Dorilaidae (Pipunculidae). Kansas Univ. Sci. Bull. 29: 1–231, 18 pls., 469 figs.
20. 1944. New Asilidae and Mydidae in the Snow Collection. Canadian Entomologist 76: 226–230, 14 figs.
21. 1944. Medical Entomology in Assam, India (Mimeo.) C.B.I. Theatre Med. Bul., Jan., 1944: 1–43.
22. 1944. A Revision of North American Omphralidae (Scenopinidae), Part I. Journ. Kansas Ent. Soc. 17 (1): 31–40.
23. 1944. A Revision of North American Omphralidae, Part II. Journ. Kansas Ent. Soc. 17 (2): 41–51, 1 pl., 20 figs.
24. 1944. A New *Pseudatrichia* (Omphralidae-Scenopinidae) from Brazil. Journ. Kansas Ent. Soc. 17: 104–105, 4 figs.
25. 1945. Revision of Nearctic Bibionidae, including Neotropical *Plecia* and *Penthetria*. Kansas Univ. Sci. Bull. 30: 1–180, 307 figs.
26. 1946. Nomenclature Notes on the Family Dorilaidae. Journ. Kansas Ent. Soc. 19: 135–137.
27. 1946. A New Pest of Strawberries in Iowa. Transact. Iowa State Horticult. Soc. 81: 165–170, 5 figs.
28. 1947. The Nearctic *Ptiolina* (Rhagionidae-Diptera). Journ. Kansas Ent. Soc. 20: 1–15, 25 figs.
29. 1947. The Genus *Leptopteromyia* (Asilidae-Diptera). Journ. Kansas Ent. Soc. 20: 72–75, 8 figs.
30. 1947. Notes and Descriptions of Dorilaidae. Journ. Kansas Ent. Soc. 20: 146–153, 11 figs.
31. 1947. The Periodical Cicada Brood III, in Iowa. Transact. Iowa Acad. Sci. 54: 311–315, 2 figs.

32. 1948. Homonymy Notes in the Bibionidae. Journ. Kansas Ent. Soc. **21**: 36.
33. 1948. The Strawberry Crown Miner (*Aristotelia fragariae* BUSCK). Iowa Journ. Economic Entomology **41**: 108.
34. 1948. Notes and Descriptions of Dorilaidae, Part II. Journ. Kansas Ent. Soc. **21**: 88–91, 5 figs.
35. 1948. New and Little Known Neotropical Dorilaidae. Journ. Kansas Ent. Soc. **21**: 124–133, 2 pls., 18 figs.
36. 1948. New and Little Known Diptera in the California Academy of Science Collection. The WASMANN Collector **7**: 129–137, 11 figs.
37. 1949. Neotropical Dorilaidae Studies, Part I. Psyche **55**: 1–15, 2 pls., 21 figs.
38. 1949. The British Museum (Natural History) Ruwenzori Expedition, 1934–1935, Bibionidae-Diptera. **1** (6): 109–127, 4 pls., 32 figs.
39. 1949. The North American *Chrysopilus* (Rhagionidae-Diptera). Amer. Midland Nat. **41**: 143–167, 3 pls., 27 figs.
40. 1949. Studies in Oriental Bibionidae, Part. I. Notes Ent. Chin. **13**: 1–10, 12 figs.
41. 1949. New Bibionidae from Madagascar. Journ. Kansas Ent. Soc. **22**: 94–96, 4 figs.
42. 1949. Studies in Hawaiian Fruit Flies (Tephritidae-Diptera). Proc. Wash. Ent. Soc. **51**: 181–205, 5 pls., 57 figs.
43. 1949. The African Dorilaidae (Pipunculidae-Diptera). Memoires Inst. Roy. Sci. Nat. Belgique, 2nd Ser., fasc. **36**: 1–80, 6 pls., 129 figs.
44. 1949. New Dorilaidae from the Belgian Congo. Bull. Inst. Roy. Sci. Nat. Belgique **25** (39): 1–10, 2 pls., 15 figs.
45. 1950. *Homoneura* vs. *Sciomyza* in Hawaii. Proc. Haw. Ent. Soc. **14** (1): 73.
46. 1950. Studies in Pacific Bibionidae (Diptera), Part I. Proc. Haw. Ent. Soc. **14** (1): 75–85, 3 pls., 19 figs.
47. 1950. A New *Dacus* from Australia (Tephritidae-Diptera). Proc. Haw. Ent. Soc. **14** (1): 87–89, 6 figs.
48. 1950. Exploration du Parc National Albert, Mission G. F. DE WITTE (1933–35), Bibionidae (Diptera-Nematocera). Inst. Parc. Nat. Congo Belge, fasc. **65**: 1–21, 35 figs.
49. 1950. Exploration du Parc National Albert, Mission G. F. DE WITTE (1933–35), Dorilaidae, Diptera. Inst. Parc. Nat. Congo Belge, fasc. **62**: 1–51, 7 pls., 71 figs.
50. 1950. The Nearctic *Nomoneura* and *Nemomydas* (Diptera-Mydidae). The WASMANN Journ. Biol. **8** (1): 9–37, 2 pls., 30 figs.
51. 1950. A Monographic Study of the African Bibionidae (Diptera), Part I: Introduction and Genus *Bibio* GEOFFROY. Journ. Kansas Ent. Soc. **23** (4): 137 to 153, 1 pl., 13 figs.
52. 1950. Neotropical Dorilaidae Studies, Part II (Pipunculidae-Diptera). Revista Ent. **21**, fasc. **3**: 433–448, 3 pls., 29 figs.
53. 1950. The Bibionidae (Diptera) of Madagascar, Part II. Memoir Inst. Sci. Madagascar, ser. A., Tome V, fasc. **2**: 323–331, 8 figs.
54. 1951. Studies in Pacific Bibionidae, Part II. Genus *Philia* MEIGEN. Proc. Haw. Ent. Soc. **14** (2): 257–275, 2 pls., 20 figs.
55. 1951. The KRAUSS Collection of Australian Fruit Flies (Tephritidae-Diptera). Pacif. Sci. **5** (2): 115–189, 84 text figs.
56. 1951. A Monographic Study of the African Bibionidae (Diptera), Part II. Genus *Philia* MEIGEN. Journ. Kansas Ent. Soc. **24**: 74–94, 1 pl., 18 figs.
57. 1951. Proposal that the Name “*Dorilas*” MEIGEN, 1800, should be Retained and the Name “*Pipunculus*” LATREILLE (1802–1803) should be Treated as a Synonym. Bull. Zool. Nomencl., London, **2**: 144–145.
58. 1951. Proposed Addition to the “Official List of Generic Names in Zoology” of the Generic Name “*Philia*” MEIGEN, 1800. Bull. Zool. Nomencl., London, **2**: 153–154.
59. 1952. Flies collected in Bait Trap. Proc. Haw. Ent. Soc. **14**: 407–409.

60. 1952. Additions and Corrections to BRYAN's Check List of the Hawaiian Diptera—Presidential address delivered before the Hawaiian Entomological Society, Dec. 10, 1951. Proc. Haw. Ent. Soc. 14: 443–484.
61. 1952. A Monographic Study of the African Bibionidae (Diptera), Part III, Genus *Plecia*. Journ. Kansas Ent. Soc. 25 (1 and 2): 72–91, 31 figs.
62. 1952. Exploration du Parc National de l'Upemba. Mission G. F. DE WITTE (1947 to 1949). Bibionidae et Dorilaidae. Diptera, Fasc. 8 (5): 57–71, 18 figs.
63. 1952. Bibionidae and Dorilaide in the Collection of the Musee du Congo Belge. Revue Zool. Bot. Afr. XLIV (1–2): 159–167, 7 figs..
64. 1952. Dipteren von den Kleinen Sunda-Inseln aus der Ausbeute der Sunda-Expedition RENSCH. V. Bibionidae. Beitr. Ent. 2 (4–5): 425–434, 12 figs.
65. 1952. Contribution a L'Etude des Dipteres de L'Urundi, III — Bibionidae et Dorilaidae. Bull. Inst. Roy. Sci. Natur. Belgique 28 (55): 1–20, 21 figs.
66. 1953. New Hawaiian Tipulidae (Diptera). Proc. Haw. Ent. Soc. 15 (1): 55–58, 9 figs.
67. 1953. Studies in Hawaiian Dorilaidae (Diptera). Part I. Proc. Haw. Ent. Soc. 15 (1): 59–73, 30 figs.
68. 1953. Notes on the SHANNON Types of Dorilaidae from Argentina. (Pipunculidae—Diptera). Acta Zool. Lilloana 10: 299–306, 12 figs.
69. 1953. The Argentine Bibionidae (Diptera). Acta Zool. Lilloana 12: 343–376, 28 figs.
70. 1953. Studies on Oriental Bibionidae: New Species of *Plecia* and *Penthetria* and a Revision of the *Plecia impostor* complex (Bibionidae: Diptera). Records Indian Mus. 50 (1): 89–104, 27 figs.
71. 1953. The Bibionidae of New Zealand (Diptera). Pacif. Sci. 7 (4): 513–521, 25 figs.
72. 1954. Notes and Descriptions on Australian Fruit Flies (Diptera: Tephritidae). Proc. Haw. Ent. Soc. 15 (2): 327–333, 13 figs.
73. 1954. *Dacus* subgenera *Neodacus* and *Gymnodacus* of the World (Diptera, Tephritidae). Proc. Ent. Soc. Wash. 56 (1): 5–23, 23 figs.
74. 1954. Studies in the Fruit Flies of the Philippine Islands, Indonesia, and Malaya, Part I, Dacini (Tephritidae—Diptera). Pacif. Sci. 8 (2): 147–204, 93 figs. [Co-author with ADACHI, M. S.].
75. 1954. Studies in New World Dorilaidae (Pipunculidae—Diptera). Journ. Kansas Ent. Soc. 27 (4): 121–127, 12 figs.
76. 1954. Neotropical Dorilaidae Studies, Part III. Brazilian Species and a Key to the Known Species of *Dorilas* sens. lat. Bol. Mus. Nac., Nova Serie, Zool. 123: 1–60, 76 figs.
77. 1954. Records of Bibionidae in the Musee Royal du Congo Belge, Tervuren. Ann. Mus. Congo, Tervuren, 4, Zool. 1: 378–380, 1 fig.
78. 1955. *Sphaeniscus* BECKER and *Euphranta* LOEW of the Oriental and Pacific Regions (Tephritidae—Diptera). Pacif. Sci. 9 (1): 77–84, 13 figs.
79. 1955. The *Dacus* (*Afrodacus*) BEZZI of the World (Tephritidae—Diptera). Journ. Kansas Ent. Soc. 28 (1): 3–15, 20 figs.
80. 1955. Contributions a l'etude de la faune entomologique du Ruanda-Urundi (Mission P. BASILEWSKY 1953). XXVIII. Diptera, Bibionidae and Dorilaidae. Ann. Mus. Congo Belge, Tervuren, 8, Zool. 36: 283–286.
81. 1955. A Reclassification of the Dacini (Tephritidae—Diptera). Ann. Ent. Soc. Amer. 48 (6): 425–437, 1 pl. + 19 figs.
82. 1956. Insects of Micronesia, Diptera: Dorilaidae (Pipunculidae). B. P. Bish. Mus. Ins. Micronesia 13 (1): 1–9, 15 figs.
83. 1956. Insects of Micronesia, Diptera: Tephritidae. B. P. Bish. Mus. Ins. Micronesia 14 (1): 1–28, 50 figs.
84. 1956. The WALKER Types of Bibionidae (Diptera). Journ. Kansas Ent. Soc. 29 (3): 85–91.
85. 1956. New Hawaiian Sciaridae (Diptera). Proc. Haw. Ent. Soc. 16 (1): 72–90, 43 figs.

86. 1956. Date of Publication of Volume 8, Number 1, of the Queensland Journal of Agricultural Science. Proc. Haw. Ent. Soc. 16 (1): 70—71.
87. 1956. Proposed Acceptance of "*Leptodiplosis*" on the Valid Original Spelling for the Generic Name Spelled Both in this Way and as "*Leptodiplosis*" by KIEFFER in 1894 (Class Insecta, Order Diptera). Bul. Zool. Nomencl. 12 (6): 176—177.
88. 1956. Proposed Use of the Plenary Powers to Validate the Generic Name "*Campsicnemus*" HALIDAY, 1851, (Class Insecta, Order Diptera). Bul. Zool. Nomencl. 12 (6): 178—180.
89. 1956. Dorilaidae (Pipunculidae) from the Commonwealth Institute of Entomology. Proc. Roy. Ent. Soc. Lond. (B) 25 (9—10): 180—182, 5 figs.
90. 1957. Insects of Micronesia, Diptera: Coelopidae. B. P. Bish. Mus. Ins. Micronesia 14 (2): 41—46, 6 figs.
91. 1957. Insects of Micronesia, Diptera: Bibionidae and Scatopsidae. B. P. Bish. Mus. Ins. Micronesia 14 (2): 87—102, 32 figs.
92. 1957. *Austromyia neglecta* HARDY, a New Synonym of *Neotozura discoidalis* (BEZZI) (Diptera: Pyrgotidae), with a Discussion of Some Family Relationships. Proc. Haw. Ent. Soc. 16 (2): 259—260.
93. 1957. New Neotropical Bibionidae in the Naturhistorisches Museum, Vienna. Ann. Naturhist. Mus., Wien, 61: 238—240, 4 figs.
94. 1958. A Review of the Genus *Neosphira* HENDEL (Diptera, Tephritidae). Journ. Kansas Ent. Soc. 31 (2): 76—81, 5 figs.
95. 1958. A Review of the Genera *Sophira* WALKER and *Tritaeniopteron* DE MEIJERE (Diptera: Tephritidae). Proc. Haw. Ent. Soc. 16 (3): 366—378, 13 figs.
96. 1958. The *Plecia* of the Pacific and Southeast Asia (Bibionidae-Diptera). Pacif. Sci. 12 (3): 185—220, 71 figs.
97. 1958. Insects of Micronesia Diptera: Omphralidae (Scenopinidae). B. P. Bishop Mus. Ins. Micronesia 13 (2): 11—13, 6 figs.
98. 1958. Guide to the Insects of Connecticut: Part VI, The Diptera or True Flies of Connecticut. Sixth Fascicle: March Flies — Bibionidae. State Conn. Geol. Nat. Hist. Surv. Bul. 87: 1—46, 9 pl., 67 figs.
99. 1959. Obituary notice for Dr. MARTIN L. ACZEL, 1906—1958. Proc. Ent. Soc. Wash. 61 (3): 139—140.
100. 1959. Dorilaidae (Diptera Cyclorrhapha) addendum. Inst. Parcs. Nat. Congo Belge. Mission G. F. DE WITTE (1933—1935), Fasc. 95 (2): 27—29, 3 figs.
101. 1959. A Review of the Genus *Pseudiasata* COQUILLET (Drosophilidae, Diptera). Proc. Haw. Ent. Soc. 17 (1): 76—82, 10 figs.
102. 1959. Proposed Use of the Plenary Powers to Suppress the Generic Names *Prothechus* RONDANI, 1856, and *Alloneura* RONDANI, 1856, for the Purpose of Validating the Generic Names *Verrallia* MIK, 1899, and *Tomosvaryella* ACZEL, 1939 (Class Insecta, Order Diptera). Bull. Zool. Nomencl. 17 (1—2): 27—29.
103. 1959. Diptera (Brachycera) Dorilaidae-Pipunculidae. South Afr. Animal Life 6: 390—412, 13 figs.
104. 1959. The WALKER Types of Fruit Flies (Tephritidae-Diptera) in the British Museum Collection. Bull. British Mus. (Nat. Hist. 8) (5): 159—242.
105. 1959. A New Bibionidae from California (Diptera). Pan-Pacific Entomologist 35 (4): 209—211.
106. 1959. Catalogue of the Neotropical Bibionidae (Diptera, Nematocera). Acta Zool. Lilloana 17: 437—476.
107. 1960. Mission Zoologique de l'I.R.S.A.C. en Afrique Orientale (P. BASILEWSKY et N. LELÉUP, 1957). XXV. Diptera Dorilaidae et Bibionidae. Ann. Mus. Congo Tervuren, in-8°, Zool., 81: 394—400, 8 figs.
108. 1960. Insects of Hawaii, Vol. 10. Diptera: Nematocera and Brachycera. 368 pp., 120 pls., U. H. Press.
109. 1960. *Paracacoxenus*, New Genus, with Notes on *Cacoxenus indagator* LOEW (Diptera: Drosophilidae). Ann. Ent. Soc. Amer. 53 (3): 356—359. [Co-author with WHEELER, M.]

110. 1960. A New *Bibio* from the Sierra Mountains, California, and a New *Plecia* from Malaya (Diptera: Bibionidae). Proc. Haw. Ent. Soc. 17 (2): 255–259.
111. 1960. Revision of the Japanese Bibionidae. Pacif. Ins. 2 (4): 383–449. [Co-author with TAKAHASHI, M.].
112. 1960. An Unusual New Nematocera from Japan (Diptera) and a New Family Name. Pacif. Ins. 2 (3): 263–267. [Co-author with NAGATOMI, A.].
113. 1960. Diptera (Nematocera) Bibionidae. South Afr. Animal Life, Vol. VII, p. 210 to 215.
114. 1961. Notes and Descriptions of Exotic Bibionidae. Proc. Wash. Ent. Soc. 63 (2): 81–99.
115. 1961. Bibionidae (Diptera Nematocera) and Dorilaidae (Pipunculidae: Diptera-Cyclorrhapha). Parc Nat. Garamba., Miss H. DE SAEGER., fasc. 24 (3): 111–180, 101 figs.
116. 1961. The Bibionidae of California. Bul. Calif. Ins. Survey 6 (7): 179–195, 58 figs., 3 maps.
117. 1961. The Diptera of Hawaii. Verhandl. XI. Intern. Kongress für Entomologie, Wien 1960, 1: 167–168.
118. 1962. New Insect Pests in Hawaii. Haw. Farm Sci. 11 (2): 6–9.
119. 1962. The Bibionidae (Diptera) of Madagascar, Part III. Verhandl. Naturf. Ges. Basel 73 (1): 149–170, 38 figs.
120. 1962. Notes and Descriptions of Pipunculidae from the Natal Museum, South Africa. Ann. Natal Mus. 15 (20): 255–266, 10 figs.
121. 1962. Insects of Macquarie Island. Diptera Coelopidae. Pacif. Ins. 4 (4): 963–971, 25 figs.
122. 1962. Preliminary Studies of the Pipunculidae of Madagascar (Diptera). Verhandl. Naturf. Ges. Basel 73 (2): 241–269, 47 figs.
123. 1962. A Remarkable New Bibionid Fly from Australia. Pacif. Ins. 4 (4): 783–785, 4 figs.
124. 1962. Studies in Pipunculidae (Diptera) of Colombia. Proc. Haw. Ent. Soc. 18 (2): 259–266, 21 figs.
125. 1964. Insects of Hawaii, vol. 11. Diptera: Brachycera II — Cyclorrhapha 1 and Supplement to vol. 10. 458 pp., 138 plates of figures. Univ. Hawaii Press, Honolulu.
126. 1964. A restudy of the PERKINS types of Australian Pipunculidae (Diptera) and the type of *Pipunculus vitiensis* MUR from Fiji. Austr. Journ. Zool. 12 (1): 84–125, 104 figs.
127. 1964. Diptera from Nepal. The Fruit Flies (Diptera Tephritidae). Bull. Brit. Mus. (Nat. Hist.) Ent. 15: 145–169, 38 figs.
128. 1964. The Pipunculidae of Argentina. Acta Zool. Lilloana 19: 187–241, 74 figs.
129. 1965. Diptera from Nepal. Bibionidae. Bull. Brit. Mus. (Nat. Hist.), Ent. 16 (1): 3–23, 51 figs.
130. 1965. Neotropical Pipunculidae (Diptera) Studies, Part IV, further studies of Brazilian species. Arquivos Zool. 14 (1): 1–67, 105 figs.
131. 1965. Insects of Hawaii. vol. 12. Diptera: Cyclorrhapha II, family Drosophilidae. Univ. Hawaii Press. 814 pp., 1200 figs.
132. 1965. Evolution and Genetics of Hawaiian Drosophilidae. Proc. XII International Congress for Entomology, London 1964, Sect. 1: Systematics, p. 119.
133. 1965. In: STONE, A. & SABROSKY, C. W. et al. A Catalog of the Diptera of America North of Mexico. U. S. Govt. Printing Office, Washington. Family Bibionidae, pp. 191–196; Scenopinidae, pp. 354–356; and Pipunculidae, pp. 550 to 557.
134. 1966. Redescriptions of BRUNETTI's species of *Bibio* from India (Diptera: Bibionidae). Ann. Mag. Nat. Hist., Ser. 13, vol. 8: 201–217, 41 figs.
135. 1966. Diptera from Nepal. Pipunculidae (Dorilaidae). Bull. Brit. Mus. (Nat. Hist.), Ent. 17 (10): 439–449, 22 figs.
136. 1966. A Catalogue of the Diptera of the Americas south of the United States. 18. Family Bibionidae. Dept. Zool. Sec. Agric., Sao Paulo, Brazil, 20 pp.

137. 1966. A Catalogue of the Diptera of the Americas south of the United States. 45. Family Pipunculidae (Dorilaidae). Dept. Zool. Sec. Agric., Sao Paulo, Brazil, 15 pp.
138. 1966. A Catalogue of the Diptera of the Americas south of the United States. 32. Family Scenopinidae (Omphralidae). Dept. Zool. Sec. Agric., Sao Paulo, Brazil, 5 pp.
139. 1966. The WALKER types of Tephritidae. Journ. Kansas Ent. Soc. **39** (4): 658—668, 1 fig.
140. 1967. Redescription of *Tomosvaryella frontata* (BECKER) (Diptera: Pipunculidae). Ann. Ent. Soc. Amer. **60** (1): 116—118, 6 figs.
141. 1967. Descriptions and notes on Hawaiian Drosophilidae (Diptera). Univ. Texas Stud. in Genetics Pub. 6615: 195—244, 113 figs.
142. 1967. The Bibionidae of Nepal. Pacif. Ins. **9** (3): 519—536.
143. 1967. The Hungarian Expedition to Mongolia. Bibionidae, Diptera. Reichenbachia **9** (22): 191—200.
144. 1967. Notes on Tephritidae (Diptera) associated with *Loranthus* (Mistletoe). Beitr. Ent. **17** (1/2): 127—149.
145. 1967. The types of Bibionidae (Diptera) in the Naturhistorisches Museum, Wien. Ann. Naturhist. Mus., Wien, **70**, 169—181.
146. 1968. New Picture-winged *Drosophila* from Hawaii. Univ. Texas Stud. in Genetics 6818: 171—262, 36 figs. [Co-author with KANESHIRO, K. Y.].
147. 1968. Bibionidae (Diptera) of New Guinea. Pacif. Ins. **10** (3—4): 443—513, 45 figs.
148. 1968. Bibionidae and Pipunculidae of the Philippines and Bismarck Islands (Diptera). Ent. Meddel. **36**: 417—507, 177 figs.
149. 1968. The fruit fly types in the Naturhistorisches Museum, Wien. Ann. Naturhist. Mus. Wien **72**, 107—155, 7 figs.
150. 1969. The Bibionidae (Diptera) of the Philippines. Pacif. Insects **11** (1): 117—154, 80 figs. [Co-author with DELFINADO, M. D.]
151. 1969. Lectotype designations for fruit flies. Pacif. Ins. **11** (2): 477—481.
152. 1969. Descriptions of new Hawaiian Drosophilidae. Univ. Tex. Pub. Studies in Genetics 6918: 39—54, 89 figs. [Co-author with KANESHIRO, K. Y.].
153. 1969. Notes on a Hawaiian "*Idiomya*" (*Drosophila*). Univ. Tex. Pub. Stud. in Genetics 6918: 71—77, 8 figs.
154. 1969. Taxonomy and distribution of the Oriental Fruit fly and related species (Tephritidae-Diptera). Proc. Haw. Ent. Soc. **20** (2): 395—428, 46 figs.
155. 1969. Myiasis of new-born calves in Hawaii. Proc. Haw. Ent. Soc. **20** (2): 435—438. [Co-author with SHISHIDO, W. T.]
156. 1969. Die Lonchaeidae und Pallopteridae Österreichs und der angrenzenden Gebiete. II: Die Pallopteridae by G. MORGE. Ent. News **80** (12): 322.
157. 1970. The Evolutionary Biology of the Hawaiian Drosophilidae. Chap. 15, Essays in Evolution and Genetics in honor of THEODOSIUS DOBZHANSKY, a supplement to Evolutionary Biology, pp. 437—543. [Co-author with CARSON, H. L., SPIETH, H. T. & STONE, W. S.].
158. 1970. Tephritidae (Diptera) collected by the Noona Dan Expedition in the Philippines and Bismarck Islands. Ent. Meddel. **38**: 71—136, 26 figs.
159. 1971. New Picture-winged *Drosophila* from Hawaii, Part II. Studies in Genetics VI. Univ. Texas Pub. 7103: 151—170, 12 Text figs.
160. 1971. Type specimens of Philippine Diptera. Notulae Ent. **51**: 15—32. [Co-author with DELFINADO, M. D.]
161. 1971. A new *Plecia* (Diptera: Bibionidae) from Mexican Amber. Studies in Fossiliferous Amber Arthropods of Chiapas Mexico, Part II. Univ. Calif. Pub. Ent. **63**: 65—67, 2 figs.
162. 1971. Diptera: Bibionidae from Ceylon. Ent. Scand. Suppl. **1**: 286.

163. 1971. Diptera: Tephritidae from Ceylon. Ent. Scand. Suppl. 1: 287–292, 2 figs.
164. 1971. Pipunculidae Parasitic on Rice Leafhoppers in the Oriental Region. Proc. Haw. Ent. Soc. 21 (1): 79–91, 3 figs.
165. 1971. Evolution of the Hawaiian Drosophilidae (Insecta: Diptera). Symposium on Indian Ocean and Adjacent Seas. Abstract No. 228, Sec. XXII: 147–148.
166. 1972. Pipunculidae (Diptera) of the 1934 Swedish Expedition to Burma. Zool. Scripta 1: 121–138, 19 figs.
167. 1972. Studies on Oriental Pipunculidae (Diptera). Oriental Ins. Suppl. 2: 1–76, 35 figs.
168. 1972. New Picture-winged *Drosophila* from Hawaii, Part III. Univ. Texas Publ. 7213: 155–161, 5 figs.
169. 1973. Insects. In: ARMSTRONG, R. W. et al. Atlas of Hawaii. pp. 74–76, Univ. Hawaii Press.
170. 1973. A Catalog of the Diptera of the Oriental Region. Vol. I. Suborder Nematocera. 618 pp., Univ. Hawaii Press. [Co-author with DELFINADO, M. D.].
171. 1973. Family Bibionidae. In: DELFINADO, M. D. & HARDY, D. E., A Catalog of the Diptera of the Oriental Region. 1: 434–442.
172. 1973. Bibionidae II. Ergebnisse der Zoologischen Forschungen von Dr. Z. KASZAB in der Mongolei. Faun. Abh. Mus. Tierk., Dresden, 4 (12): 105–111.
173. 1973. A Monograph of the Fruit flies (Tephritidae, Diptera) of Thailand and bordering countries. Pacif. Ins. Monogr. 31: 353 pp.
174. 1973. *Drosophila carinata* GRIMSHAW, 1901 (Insecta, Diptera): Proposed suppression under the plenary powers in order to preserve *Drosophila mercatorum* PATTERSON and WHEELER, 1942. Bull. Zool. Nomencl. 30 (2): 112–117. [Co-author with CARSON, H. L., et al.].
175. 1974. The fruit flies of the Philippines (Diptera, Tephritidae). Pacif. Ins. Monogr. 32, 266 pp., 6 pls.
176. 1974. Flightless Dolichopodidae (Diptera) in Hawaii. Proc. Haw. Ent. Soc. 21: 369–371. [Co-author with DELFINADO, M. D.].
177. 1974. A new *Tephritis* from flower heads of thistle in Pakistan (Diptera, Tephritidae). Proc. Haw. Ent. Soc. 21: 373–375.
178. 1974. Evolution in the Hawaiian Drosophilidae. Introduction and background information. In: WHITE, M. J. D., ed., Genetic Mechanisms of Speciation in Insects, pp. 71–80. Australia & N. Zealand Book Co., Sydney.
179. 1975. Studies in Hawaiian *Drosophila*, modified mouthparts species, no. I: *mitchelli* subgroup. Proc. Haw. Ent. Soc. 22: 51–55. [Co-author with KANE-SHIRO, K. Y.].
180. 1975. Studies in Hawaiian *Drosophila*, miscellaneous new species, no. I: Proc. Haw. Ent. Soc. 22: 57–64.
181. 1975. *Forcipomyia* MEIGEN 1818 (Insecta Dept.): Designation of a type species under the Plenary Powers. Z. N. (S) 1079. Bull. Zool. Nomencl. 32 (1): 38–40.
182. 1975. A Catalog of the Diptera of the Oriental Region, vol. II. Suborders Brachycera and Cyclorrhapha Aschiza. 459 pp., Univ. of Hawaii Press. [Co-author with DELFINADO, M. D.].
183. 1975. Family Pipunculidae. In: DELFINADO, M. D. & HARDY, D. E.: A Catalog of the Diptera of the Oriental Region. Vol. II. Suborders Brachycera and Cyclorrhapha Aschiza. pp. 296–306.
184. 1976. Resurrection of *Bactrocera* MACQUART and clarification of the type-species, *longicornis* MACQUART (Diptera: Tephritidae). Proc. Haw. Ent. Soc. 22 (2): 245–249.
185. 1977. Review of the Hawaiian *Drosophila* (*Antopocerus*) HARDY. Proc. Ent. Soc. Wash. 79 (1): 82–95.
186. 1977. A Catalog of the Diptera of the Oriental Region, vol. III, Suborder Cyclorrhapha, excluding Aschiza. 854 pp., Univ. of Hawaii Press. [Co-author with DELFINADO, M. D.].

187. 1977. Suborder family Tephritidae. In: DELFINADO, M. D. & HARDY, D. E.: A Catalog of the Diptera of the Oriental Region, Vol. III, Cyclorrhapha, excluding Aschiza. pp. 44–134.
188. 1978. Replacement name for *Drosophila nigricolor* HARDY (Diptera: Drosophilidae). Proc. Ent. Soc. Wash. 80 (1): 102.
189. 1978. A new symmorphous sibling species of *Drosophila* (Diptera) from the island of Maui, Hawaii. Amer. Midland Nat. 99 (2): 350–351.
190. 1979. A review of the modified tarsus species group of Hawaiian *Drosophila* (Drosophilidae: Diptera) I. The "split-tarsus" subgroup. Proc. Haw. Ent. Soc. 23: 71–90. [Co-author with KANESHIRO, K. Y.].
191. 1979. Book Review. Economic fruit flies of the South Pacific Region. by R. A. I. DREW, G. H. S. HOOPER and M. A. BATEMAN. WATSON FERGUSON & Co., Brisbane, Austr. Pac. Ins. 20:429–432.
192. 1979. An Ecological survey of Puaaluu Stream, Maui, Part III, Report of preliminary entomological survey. Coop. Nat. Park Resources Stud. Unit. Hawaii, Tech. Rpt. Nr. 27: 34–39.
193. 1980. Insects of Hawaii. Vol. 13. Diptera: Cyclorrhapha III. 451 pp., Univ. Hawaii Press, Honolulu. [Co-author with DELFINADO, M. D.].
194. 1980. Xenasteiidae, a new family of Schizophora (Diptera) from the Pacific and Indian Oceans. Proc. Haw. Ent. Soc. 23: 205–225.
195. 1980. Insects of Hawaii. Vol. 13. Diptera: Acalypterae, exclusive of Drosophilidae. 451 pp., Univ. of Hawaii Press.
196. 1980. Family Bibionidae. In: Catalogue of Afrotropical Diptera. R. W. CROSSKEY ed. British Museum (Nat. Hist.), pp. 213–215.
197. 1980. Family Pipunculidae. In: Catalogue of Afrotropical Diptera. R. W. CROSSKEY ed. British Museum (Nat. Hist.), pp. 483–487.
198. 1980. The *Sophira* group of Fruit fly genera (Diptera: Tephritidae: Acanthonevrini). Pacific Insects 22 (1–2): 123–161.
199. 1981. Insects of Hawaii. Vol. 14. Diptera: Calyptratae I–VIII. 491 pp. Univ. of Hawaii Press.
200. 1981. Fruitfly systematics of the Indian Subcontinent. Export India Publications, Jullundur, India. 114 pp., 99 figs. [Coauthor with V. C. KAPOOR, et al.].

Besprechungen

Catalogue of the Diptera of the Afrotropical Region. (Editor: R. W. CROSSKEY). BRITISH MUSEUM (NATURAL HISTORY), London. 1980; 16 × 24 cm; 1437 S. Preis 55,00 lsg.

Ein exzellentes Werk, ein Muster von Gründlichkeit und Sorgfalt, gepaart mit faszinierend rationaler Darstellungsart, in der dennoch kein Detail fehlt, ein Beispiel für korrekte und vollständige Literaturzitate, das seinesgleichen sucht: ein Katalog, der taxonomische Basis für Jahrzehnte sein wird, unentbehrlich für jede systematische Forschungsarbeit zu dieser geographischen Region. Die Herausgeber stellten und erfüllten maximale Anforderungen an Genauigkeit und Konsistenz. Ihrer bestaunenswerten Leistung gebührt höchste Anerkennung: R. W. CROSSKEY als Chefredakteur mit dem Redakteurskreis B. H. COGAN, P. FREEMAN, A. C. PONT, K. G. V. SMITH und † H. OLDROYD. Die Auswahl der Autoren für die taxonomische Detailbearbeitung der einzelnen Familien bestätigt, daß weltweit die besten Spezialisten zur Mitarbeit herangezogen wurden, wobei die Tatsache besondere Beachtung verdient, daß davon über Zweidrittel des Werkes Mitarbeiter des British Museum schufen.

Es gab für diesen Katalog keinen Vorläufer. Allein diese Tatsache bestätigt die enorme Leistung, 16000 Arten des tropischen und südlichen Afrika hinsichtlich ihrer taxonomischen und geographischen Daten zu zitieren mit dem Ziel, die riesige und weit verstreute taxonomische Grundlagenarbeit über die Dipteren dieser Region in einem Band zu erfassen, alle bekannten Arten und ihre Synonyma zu fixieren, sie zu klassifizieren sowie ihre geographische Verbreitung darzustellen. Das Resultat ist das einer vorbildlichen Revisionsarbeit für die Teilgruppen und der Katalog insgesamt up to date im wahrsten Sinn. — Die dem Katalogtext folgende Bibliographie der zitierten Literatur ist so hervorragend, daß sie sich allein schon als ein unentbehrliches Einzelwerk für jeden Dipterologen erweist. MORGE

Varley, G. C.; Gradwell, G. R. & Hassell, M. P. Populationökologie der Insekten. Analyse und Theorie. GEORG THIEME Verlag, Stuttgart—New York. 1980; 12,2 × 19,2 cm; VII + 211 S., 73 Abb. Preis 24,80 DM.

Das flexible Taschenbuch ist die Übersetzung von B. OHNESORGE der didaktisch hervorragenden Einführung in das Studium der Dynamik tierischer Populationen, die "Insect Population Ecology" der genannten drei Autoren, wobei die im deutschen Schrifttum teilweise abweichende Terminologie und die seit Erscheinen der englischen Ausgabe neue Literatur über den Grauen Lärchenwickler berücksichtigt wurde. Ausgehend von der Darstellung populationsdynamischer Vorgänge folgt die Beschreibung, wie der Massenwechsel von Insektenpopulationen im Laboratoriumsexperiment und im Freiland adäquat registriert und richtig interpretiert werden kann, wobei Fehlermöglichkeiten und Wege zu ihrer Vermeidung Berücksichtigung finden. Intra- und Interspezifische Konkurrenz, Konkurrenzausschluß, Parasiten und Räuber, Klimaeinflüsse auf Überlebensrate, Entwicklung und Fortpflanzung, Erstellung und Auswertung von Lebenstafeln (ausführlich für den Kleinen Frostspanner), Populationsdynamik von Forstschädlingen und die Trends in der biologischen Insektenbekämpfung sind die Themen, die den Inhalt des Buches umreißen. Experimente und Übungen, Antworten zu den Übungsfragen sowie eine Erklärung der Fachausdrücke und der verwendeten Symbole bestätigen das relativ kleine Buch als solches einer umfassenden Informationsquelle. MORGE