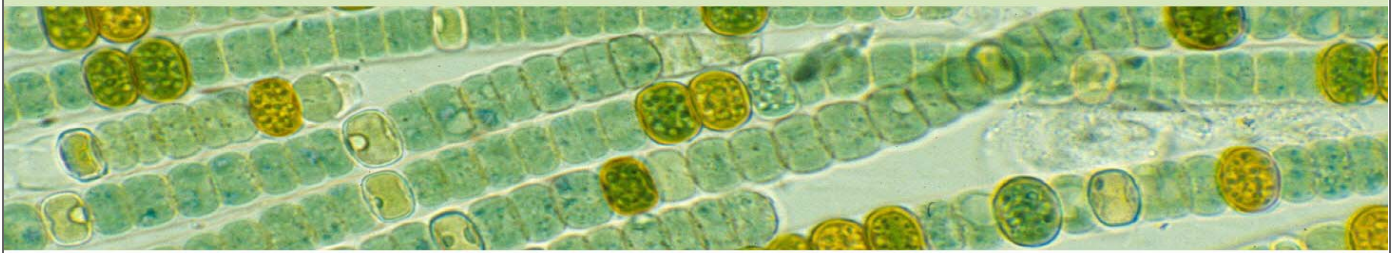


Team Phycology Vienna



TEAM PHYCOLOGY

Home

Team

Projects

Presentations

Publications

Education & Public

Outreach Collection

Links

Contact

Impressum

Department of Limbo

Publications

2015 - 2013

Degefu F. & M. Schagerl. 2015. The phytoplankton community of tropical high- mountain crater lake Wonchi, Ethiopia. *Hydrobiologia*, accepted.

Mayr M., Jerney J. & M. Schagerl. 2015. Combating planktonic algae with benthic algae. *Ecological Engineering* 74: 310-318.

Degefu, F. & M. Schagerl. 2014. Zooplankton abundance, species composition and ecology of tropical high-mountain crater lake Wonchi, Ethiopia. *Journal of Limnology*, DOI: <http://dx.doi.org/10.4081/jlimnol.2014.986>.

Degefu, F., A. Herzig, F. Jirsa & M. Schagerl. 2014. A limnological snapshot of highly threatened tropical high-mountain crater lakes in Ethiopia. *Journal of Tropical Conservation Science* 7: 365-381.

Straubinger, N. Kaggwa, M. & Schagerl, M. 2014. Phytoplankton patterns along a series of small man-made reservoirs in Kenya. *Environmental monitoring and assessment* 186: 5153-5166.

Schagerl, M. & J. Wukovits. 2014. Cultivation and inorganic carbon uptake of the rare desmid *Oocardium stratum*. *Phycologia* 53: 320-328.

Straubinger-Gansberger, N., Lawton, L., Gruber, M., Kaggwa M.N., Oduor, S.O. & M. Schagerl. 2014. Cyanobacterial toxins in East African Rift Valley lakes - do they really cause flamingo mass mortality? *Wildlife Biology* 20: 185-189.

Burian, A., Kainz, M.J., Schagerl, M., Yasindi A. 2014. The role of rotifers in the food web of the saline-alkaline, hypereutrophic Kenyan Rift Valley Lake Nakuru: a snapshot-analysis of micro- and mesoplankton communities. *Freshwater Biology* 59: 1257-1265.

Peduzzi, P., Gruber, M., Gruber, M. & M. Schagerl. 2014. The virus's tooth - cyanophages affect the flamingo population of an African soda lake in a bottom up cascade. *The ISME Journal* 8: 1346-1351.

Fetahi, T., Schagerl, M. & Mengistou, S. 2014. Key drivers for phytoplankton composition and biomass in an Ethiopian highland lake. *Limnologica* 46: 77-83.

Kaggwa, N.M., Burian, A., Oduor, S.O. & M.Schagerl. 2013. Ecomorphological variability of *Arthrospira fusiformis* (Cyanoprocarota) in African saline lakes. *MicrobiologyOpen* 2: 881-891.

Ong'ondo, G.O., Yasindi, A.W., Oduor, S.O., Jost, S., Schagerl, M., Sonntag, B., Boenigk, J. 2013. Ecology and community structure of ciliated protists in two saline-alkaline Rift Valley lakes in Kenya with special emphasis on *Frontonia*. *J. Plankton Research* 35: 759-771.

Zwirn, M., Chen, C., Wagih Moustafa Abo El-Soud, G., Schagerl, M. 2013. Induction of sexual reproduction in the genus *Spirogyra* (Zygnematophyceae, Streptophyta) and related problems. *Fottea* 13: 77-85.

Burian, A., Schagerl, M. & Yasindi, A. 2013. Microzooplankton feeding behavior: Grazing on the microbial and the classical food web of African soda lakes. *Hydrobiologia* 710: 61-72.

Kaggwa, M.N., Gruber, M., Oduor, S.O., Schagerl, M. 2013. A detailed time series assessment of the diet of Lesser Flamingos - further explanation for their itinerant behaviour. *Hydrobiologia*, 710: 83-93.

Jirsa, F., Gruber M., Stojanovic A., Oduor S.O., Mader D., Körner W., Schagerl M. 2013. Major and Trace Element Geochemistry of Lake Bogoria and Lake Nakuru, Kenya, during extreme drought. *Chemie der Erde Geochemistry* 73: 275-282.

Former

Chen, C., Barfuss, M., Coleman, A., Pröschold, T. & Schagerl, M. 2012. Hidden diversity of the green alga *Spirogyra* (Conjugatophyceae, Streptophyta). *BMC Evolutionary Biology* 12:77.

Chen, C. & Schagerl, M. 2012. Slow evolution of 1506 group I intron in *Spirogyra* LINK 1820 (Zygnematophyceae, Streptophyta), a fast evolving lineage in the Zygnemataceae. *Fottea* 12: 255-272.

Chen, C., Barfuss, M., Coleman, A., Pröschold, T. & Schagerl, M. 2012. Hidden diversity of the green alga *Spirogyra* (Conjugatophyceae, Streptophyta). *BMC Molecular Biology* 12:77.

Chen, C. & Schagerl, M. 2012. Slow evolution of 1506 group I intron in *Spirogyra* LINK 1820 (Zygnematophyceae, Streptophyta), a fast evolving lineage in the Zygnemataceae. *Fottea* 12: 255-272.

Burian, A., Schagerl, M. & Yasindi, A. 2012. Microzooplankton feeding behavior: Grazing on the microbial and the classical food web of African soda lakes. *Hydrobiologia*, DOI: 10.1007/s10750-012-1023-2.

Fetahi T., Mengistou S., Schagerl, M. 2011. Zooplankton Community Structure and Ecology of the Tropical-highland Lake Hayq, Ethiopia. *Limnologica* 41: 389-397.

Schagerl, M. & Möstl, M. 2011. Drought stress, rain and recovery of the intertidal seaweed *Fucus spiralis*. *Marine Biology* 158: 2471-2479.

Degefu, F., Mengistu, S. & Schagerl, M. 2011. Potential Influence of Fish Cage Farming on Water Quality and Plankton in Fish Ponds: A Case Study in the Rift Valley and North Shoa Reservoirs, Ethiopia. *Aquaculture* 316: 129-135.

Kaggwa, M., D. Liti & M. Schagerl, 2011. Small tropical reservoirs and fish cage culture: a pilot study conducted in Machakos district, Kenya. *Aquaculture International* 19: 839-853.

Pokorny, N., C. Fesl, R., Schagerl, M. & J Waringer 2011. Factors structuring macroinvertebrate communities in a rivulet and its springs in the Upper Austrian limestone alps. *River research and applications* 28: 637-646.

Schagerl, M., Angeler, D.G. & Biester A., 2011. Phytoplankton community structure along saline and trophic gradients in urban clay-pit ponds (Vienna, Austria): unique assemblages in a human-dominated environment. *Fundamental and applied Limnology* 178: 301-314.

Fetahi, T., Schagerl, M., Mengistou, S., Libralato, S., 2011. Food web structure and trophic interactions of the tropical highland lake Hayq, Ethiopia. *Ecological modelling*. 222: 804-813.

Borkenstein, C.G., Knoblauchner, J., Frühwirth, H. & Schagerl, M. 2011. Cultivation of *Chlorella emersonii* with flue gas from a cement plant. *Journal of applied phycology* 23: 131-135.

Niedermayr, R. & Schagerl, M. 2010. Structuring factors of the phytobenthos community along a mountain headwater (National Park Kalkalpen, Austria).

Fundamental and Applied Limnology 177: 93-104.

Schagerl M., Bloch, I., Angeler, D.G. & C. Fesl, 2010. The use of urban clay-pit ponds for human recreation: assessment of impacts on water quality and phytoplankton assemblages. *Environmental Monitoring and Assessment* 165: 283-293.

Braun, B. & M. Schagerl, 2010. Algal communities of an impoundment along the river Große Erlauf (Austria) related to their environment. *River Systems* 19: 3-13.

R. Niedermayr, N. Pokorny & M. Schagerl, 2009. Die Phytobenthosgemeinschaft eines Quellbaches im Nationalpark Kalkalpen, Österreich. *Beiträge zur Naturkunde Oberösterreichs* 19: 269-294.

Schagerl, M., R. Hainz & C. Wöber, 2009. Autecology and species delineations of the green filamentous alga *Spirogyra* LINK. *Phycologia* 48: 115.

Hainz, R., C. Wöber & M. Schagerl, 2009. The relationship between *Spirogyra* (Zygnematophyceae, Streptophyta) filament type groups and environmental conditions in Central Europe. *Aquatic Botany* 91: 173-180.

Schagerl, M., Drozdowski I., D.G. Angeler, T. Hein & S. Preiner, 2009. Water age – A major factor controlling phytoplankton community structure in a reconnected dynamic floodplain (Danube, Regelsbrunn, Austria). *J. Limnol.* 68: 274-287.

Schagerl, M., & Kerschbaumer M., 2009. Autecology of selected *Vaucheria* species (Xanthophyceae). *Aquatic ecology* 43: 295-303.

Pokorny, N., C. Fesl, R. Niedermayr & M. Schagerl, 2008. Die Evertbraten-Fauna des Almbaches und dessen Quellen im Nationalpark Kalkalpen, Oberösterreich. *Zool.-bot. Ges. Österreich* 145: 1-22.

Schagerl, M. & S. Oduor, 2008. Phytoplankton community relationship to environmental variables in three Kenyan Rift Valley saline-alkaline lakes. *Marine and Freshwater Research* 59: 125-136.

Preiner, S., Drozdowski I., Schagerl M., Schiemer F. & T. Hein, 2008. The significance of side-arm connectivity for carbon dynamics of the River Danube, Austria. *Freshwater Biology* 53: 238-252.

Oduor, S. O. & M. Schagerl, 2007. Phytoplankton photosynthetic characteristics in three Kenyan Rift Valley saline-alkaline lakes. *J. Plankton Research* 29: 1041-1050.

Weber, J. & Schagerl, M. 2007. Strategies of *Spirogyra* against Epiphytes. *Arch. Hydrobiol. Suppl. Algal. Stud.* 123: 57-72.

Schagerl, M., I. Bloch & A. Vietauer, 2007. Naturinseln im Siedlungsgebiet. Ziegelteiche in Wien und Niederösterreich. Eine ökologische Studie zur Erfassung hydrochemischer Eigenschaften und deren Einfluss auf Alggemeinschaften. *Abh. Zool.-bot. Ges. Österreich*, 36: 1-94.

Schagerl, M. & Künzl, G. 2007. Chlorophyll a extraction from freshwater algae – a comparison of selected methods and solvents. *Biologia* 62: 70-75.

Oduor, S.O. & M. Schagerl, 2007. Temporal Trends of Ion contents and Nutrients in three Kenyan Rift Valley Saline-Alkaline Lakes and their influence on Phytoplankton biomass. *Hydrobiologia* 584: 59-68.

Riedler, P., Baranyi, C. Hein, T., Keckeis, S. & M. Schagerl. 2006. Abiotic and biotic control of phytoplankton development in dynamic side-arms of the River Danube. *Arch. Hydrobiol. Suppl. Large Rivers* 158/4: 577-594.

Rauch, A., Fesl, C. & M. Schagerl. 2006. Influence of environmental variables on algal associations from a floating vegetation mat (Schwingmoor Lake Lunzer Obersee, Austria). *Aquatic Botany* 84: 129-136.

Limberger, R. and M. Schagerl. 2006. Seasonal variation of hydrochemistry, algal biomass and phytoplankton composition in a Danubian backwater system. *Arch Hydrobiol. Suppl. Large rivers* 16: 373-388.

Schagerl, M. & Müller, B. 2006. Acclimation of lipophilic pigments to different light intensities in four freshwater cyanobacteria. *J. Plant Physiol.* 163: 709-716.

Ruzicka, K., Fesl C. & Schagerl, M. 2006. Influence of environmental variables on the temporal and spatial distribution of phytoplankton species in a dystrophic and meromictic lake (Lunzer Obersee, Austria). *Arch. Hydrobiol. Suppl. Algol. Stud.* 115: 101-114.

Ruzicka, K. & Schagerl, M. 2004. Hydrochemie und Phytoplanktongemeinschaften des Lunzer Obersees (Niederösterreich). *Linzer Biol. Beiträge* 36: 1317-1337.

Schagerl, M., Riedler P. & A. Wittmann, 2004. Der Einfluß der Öffnungsmaßnahmen auf die Phytoplanktongemeinschaft im Regelsbrunner Altarmsystem. In: Schiemer, F. & W. Reckendorfer (Eds). *Das Donau-Restaurierungsprojekt – Ökologische Auswirkungen.* Abh. Zool.-Bot. Ges. Österr. 34: 47-66.

Müller, B. & M. Schagerl, 2004. Primary productivity and photoacclimation in cyanobacteria – a comparison of carbon fixation, oxygen evolution and in vivo fluorescence. *Arch. Hydrobiol. Suppl. Algol. Studies* 113: 143-157.

Limberger, R., C. Fesl & M. Schagerl. 2004. Phytoplankton community structure in a Danubian backwater system: Response to environmental factors. *Arch. Hydrobiol.* 161: 181-198.

Berger, J. & M. Schagerl, 2004. Allelopathic activity of Characeae. *Biologia* 59: 9-15.

Rauch, A. & M. Schagerl, 2003. Ein Beitrag zur Algenflora des Schwingrasens am Lunzer Obersee (Österreich). *Verh. Zoll.-Bot. Ges. Österreich* 140: 67-92.

Berger, J. & M. Schagerl, 2003. Allelopathic activity of *Chara aspera*. *Hydrobiologia* 501:509-515.

Schagerl, M. & Oduor, S.O., 2003. On the limnology of Lake Baringo (Kenya): II. Pelagic Primary Production and Algal Composition of Lake Baringo, Kenya. *Hydrobiologia* 506-509: 297-303.

Oduor, S.O., Schagerl, M. & Mathooko, J. M., 2003. On the limnology of Lake Baringo (Kenya): I. Temporal physico-chemical dynamics. *Hydrobiologia* 506-509: 121-127.

Artmann, U., J.A. Waringer & M. Schagerl, 2003. Algal biomass and allochthonous input of coarse particulate organic matter in a low-order sandstone stream (Weidlingbach, Lower Austria). *Limnologica* 33: 77-91.

Müllner, A. & M. Schagerl, 2003. Abundance and distribution of the phytobenthic community in an alpine gravel brook. *Internat. Rev. Hydrobiol.* 88: 243-254.

Schagerl, M., K. Donabaum & C. Pichler, 2003. Patterns of major photosynthetic pigments in freshwater algae. 2. Dinophyta, Euglenophyta, Chlorophyta. *Int. J. Limnol.* 39: 49-62.

Schagerl, M. & K. Donabaum, 2003. Patterns of major photosynthetic pigments in freshwater algae. 1. Cyanoprokaryota, Rhodophyta and Cryptophyta. *Int. J. Limnol.* 39: 35-47.

Angeler, D.G., G. Garcia & M. Schagerl, 2002. Heterotrophic euglenoid flagellates from the Sierra Nevada Natural Park area (Southern Spain). *Cryptogamie, Algol.* 23: 311-332.

Angeler, D.G., M. Schagerl & A.N. Müllner, 2002. Taxonomic comments on the genus *Meniodium* (Euglenozoa), with a description of *Meniodium intermedium* sp. nov. *Europ. J. Protistol.* 38: 393-404.

Schagerl, M., I. Unterrieder & D.G. Angeler, 2002. Allelopathic interactions among cyanoprokaryota and other algae originating from Lake Neusiedlersee (Austria). *Internat. Rev. Hydrobiol.* 87: 365 - 374.

- Schagerl, M., K. Donabaum & P. Riedler, 2001. Flora der Salzgewässer. In: Blab, A. & G. Wolfram (Eds.): Salzlebensräume in Österreich, Monographien UBA im Eigenverlag, in press.
- Schagerl, M., G. Wolfram & K. Donabaum, 2001. Der Chemismus der Salzgewässer. In: Blab, A. & G. Wolfram (Eds.): Salzlebensräume in Österreich, Monographien UBA im Eigenverlag, in press.
- Schagerl, M., I. Unterrieder & D.G. Angeler, 2001. Allelopathic interactions among *Anabaena torulosa* (Cyanoprokaryota) and other algae isolated from lake Neusiedlersee (Austria). Arch. Hydrobiol. Suppl. Algol. Studies. 103:117-130.
- Waringer-Löschenkohl, A. & M. Schagerl, 2001. Algal exploitation by tadpoles - an experimental approach. Internat. Rev. Hydrobiol. 86: 105-125.
- Schagerl, M. & P. Riedler, 2000. Phytoplanktonzusammensetzung in der Regelsbrunner Au. Verh. Abh. Zool.-bot. Ges. Österreich 31: 43-62.
- Schagerl, M. & C. Pichler, 2000. Pigment composition of freshwater Charophyceae. Aquatic botany 67: 117-129.
- Wolfram, G., K. Donabaum, M. Schagerl, V. Kowarc, 1999. The zoobenthic community of shallow salt pans in Austria – preliminary results on phenology and the impact of salinity on benthic invertebrates. Hydrobiologia 408/409: 193-202.
- Riedler, P., K. Abderrahim, U. Artmann, S. Hordinsky, F. Huber, S. Kargl, N. Mandl, M. Schagerl, 1999. Benthische und pelagische Primärproduktion im Regelsbrunner Altarmsystem. Linzer biol. Beitr. 31/2: 763-781.
- Angeler, D.G., A.N. Müllner & M. Schagerl, 1999. Comparative ultrastructure and Nucleus of *Distigma* (Euglenozoa) – systematic implications. Eur. J. Protistol. 35(3): 309-318
- Donabaum, K., M. Schagerl & M.T. Dokulil, 1999. Integrated lake management to restore macrophyte domination. Hydrobiologia 395/396: 87-97.
- Angeler, D.G., M. Schagerl, & A.W. Coleman, 1999. Phylogenetical relationships between subpopulations of *Eudorina elegans* (Volvocales, Chlorophyta) inferred from molecular and biochemical data. J. Phycol. 35: 815-823.
- Schagerl, M., K. Donabaum, M. Dokulil, P. Riedler, 1999. Restauration of „Alte Donau“ - a backwater in Vienna used as recreation area. Acta agronomica Óváriensis 41/1: 51-60.
- Hein, T., G. Heiler, D. Pennetzdorfer, P. Riedler, M. Schagerl, F. Schiemer, 1999. The Danube restoration project: functional aspects and planktonic productivity in the floodplain system. Regulated Rivers: Res. Mgmt. 15: 259-270.
- Schagerl, M., D.G. Angeler & A.W. Coleman, 1999. Intraspecific phylogeny of *Pandorina morum* (Volvocales, Chlorophyta) inferred from molecular, biochemical and traditional data. Eur. J. Phycol. 34: 87-93.
- Schagerl, M. & K. Donabaum, 1999. Aufwuchsalgen im Donaustrom bei Klosterneuburg bei Wien (Österreich). Verh. Zool.-bot. Ges. Österr. 135: 205-230.
- Riedler, P. & M. Schagerl, 1998. Pelagic primary production and related parameters in the river Danube near Vienna (Austria). Arch. Hydrobiol. Suppl. 115/2, Large Rivers 11: 139-151.
- Schagerl, M. & K. Donabaum, 1998. Epilithic algal communities upon natural and artificial substrata in River Danube near Vienna (Austria). Arch. Hydrobiol. Suppl. 115/2, Large Rivers 11: 153-165.
- Angeler, D.G., M. Schagerl, & A.W. Coleman, 1998. Does the intraspecific disjunct occurrence of the carotenoid linoxanthin reflect phylogenetical relationships within syngens of *Pandorina morum* Bory (Volvocales, Chlorophyta)? Biologia, Bratislava 53: 567-575.

- Schagerl, M. & D.G. Angeler, 1998. The distribution of the xanthophyll loroxanthin and its systematic significance in the colonial Volvocales (Chlorophyta). *Phycologia* 37: 79-83.
- Schagerl, M. 1997. Die Algen der Lampenflora in der Hermannshöhle. In: Hartmann, H., W. Hartmann, & H. Mrkos, (Eds.): Die Hermannshöhle in Niederösterreich - Eine Monographie der Hermannshöhle in der Marktgemeinde Kirchberg am Wechsel/NÖ (Kat.-Nr. 2871/7). *Wiss. Beih. Höhle* 50: 259-264.
- Angeler, D.G. & M. Schagerl, 1997. Distribution of the xanthophyll loroxanthin in selected members of the Chlamydomonadales and Volvocales (Chlorophyta). *Phyton* 37: 119-132.
- Schagerl, M., H. Krbec, S. Nairz, C. Wieltschnig, 1996. Pelagische Primärproduktion in einem Donaualtarm bei Regelsbrunn (Niederösterreich). *Verh. Zool.-Bot. Ges. Österreich* 133: 201-216.
- Hein, T., M. Schagerl, G. Heiler & F. Schiemer, 1996. Chlorophyll-a and hydrochemical dynamics in a backwater system of the Danube, controlled by hydrology. *Arch. Hydrobiol. Suppl.* 113, Large Rivers 10: 463-470.
- Schagerl, M., K. Donabaum, & G. Janauer, 1996. Comparative limnological study of four Danube backwaters in Lower Austria, from 1991 to 1994. *Arch. Hydrobiol. Suppl.* 113, Large Rivers 10: 457-462.
- Schagerl, M., E. Hauser, & G. Janauer, 1996. Multivariate analysis of the relationship between chlorophyll-a and the hydrochemical environment in a Danube backwater (Greifenstein, Lower Austria). *Arch. Hydrobiol. Suppl.* 113, Large Rivers 10: 471-475.
- Schagerl, M., 1995. Kritische Bemerkungen zur Gattung *Neglectella* Vodenic. et Benderl. 1971 (Oocystaceae - Chlorophyceae). *Carinthia* II, Sonderheft 53: 122 - 124.
- Schagerl, M., 1993. Lichtmikroskopische und ultrastrukturelle Untersuchungen an *Neglectella peisonis* spez.nov. – einer planktischen Oocystaceae aus dem Neusiedlersee (Österreich). *Nova Hedwigia* 56: 61–74.
- Kusel-Fetzmann E. & M. Schagerl, 1993. Verzeichnis der Sammlung von Algenkulturen an der Abteilung für Hydrobotanik am Institut für Pflanzenphysiologie der Universität Wien. *Phyton* 33: 209–234.
- Gätz, N, M. Schagerl & K. Donabaum, 1993. Form und Täfelungsvarianten bei ausgewählten Dinoflagellaten. *Lauterbornia* 14: 31–41.
- Schagerl, M., 1991. Die Algen der Lampenflora der Hermannshöhle bei Kirchberg/Wechsel (NÖ). *Verh. Zool.-Bot. Ges. Österr.* 128: 83–106.
- Gätz, N. & M. Schagerl, 1990. On the ecology of *Peridinopsis borgei* Lemm. *Phyton* 30: 327–328.
- Gätz N. & M. Schagerl, 1990. *Peridinopsis borgei* Lemm., eine seltene Dinophyceae in Ziegelteichen in Wien und Niederösterreich. *Lauterbornia* 4: 24–29.