

Catalogue of the type specimens of the family Hebridae (Insecta: Hemiptera: Heteroptera) in the Natural History Museum Vienna

H. ZETTEL*, H. BRUCKNER*, A. LACINY* & K. ZENZ*

Abstract

The type specimens of the gerromorphan family Hebridae housed in the Natural History Museum Vienna are catalogued. Information on type status, label data, and current taxonomic status is provided. The treated material consists of 668 specimens of 72 nominal species, including 45 holotypes, one lectotype, one syntype, five paralectotypes, and 616 paratypes. Photographs of 40 type specimens are provided.

Key words: Hebridae, types, catalogue, collection.

Zusammenfassung

Die Typenexemplare der Familie Hebridae, die im Naturhistorischen Museum in Wien verwahrt werden, wurden katalogisiert. Informationen zum Typenstatus, zu den Etikettendaten und zum aktuellen taxonomischen Status werden geliefert. Das behandelte Material umfasst 668 Exemplare von 72 nominellen Arten, einschließlich 45 Holotypen, einem Lectotypus, einem Syntypus, fünf Paralectotypen und 616 Paratypen. Vierzig Typusexemplare werden illustriert.

Introduction

The Natural History Museum Vienna houses a significant world collection of Hebridae, covering about 50% of the global diversity (ca 230 described species; POLHEMUS & POLHEMUS 2007, updated). It chiefly comprises Asian specimens collected during the last 30 years and taxa described by the first author. Illustrations of several species are provided in this catalogue for the first time, in addition to the verbal original descriptions and drawings. Furthermore, the Natural History Museum Vienna houses a few important type specimens from Mexico and Guatemala (CHAMPION 1898). The late Dr. Izyaslav M. Kerzhner organized an exchange of specimens with the Zoological Museum in Saint Petersburg (Russia) allowing the acquisition of 31 paratype specimens from the territory of the former Soviet Union, described by KANYUKOVA (1997). Other paratypes were provided via exchange with other institutions or donations by scientists from all over the world (see Acknowledgements).

General information on the Heteroptera collection of the Natural History Museum Vienna was provided in the type catalogues of Reduviidae (RABITSCH 2000, SEHNAL 2000) and Gerridae (ZETTEL et al. 2022).

* Herbert Zettel, Harald Bruckner, Alice Laciny & Katharina Zenz, 2nd Zoological Department, Natural History Museum Vienna, Burgring 7, 1010 Vienna, Austria. – herbert.zettel@nhm-wien.ac.at; harald.bruckner@nhm-wien.ac.at; alice.laciny@nhm-wien.ac.at; katharina.zenz@gmx.net

Material and methods

The source of this inventory is the database of the Natural History Museum Vienna, which includes all types of Hebridae in the systematic main collection of dry mounted specimens registered until 2022. The catalogue does not treat a small number of paratype specimens of long series, which were put aside for future exchange with other museums (glued on paper cards or in alcohol) and therefore not be included in the database. Taxa described between 1857 and 2022 were considered.

The species are listed alphabetically, following their names in the original descriptions. Unless indicated otherwise, the original combination is still valid.

The paragraph with the original citation includes the type locality and the depository of primary types (holo-, lecto- and syntypes). If the type depository is not mentioned in the original description, it was taken from ANDERSEN (1995; Palaearctic Region), an unpublished catalogue by Nils Møller Andersen, or investigated by the authors. If type specimens (paratypes) originate from more than one locality, a “type region” is noted, summarizing the distribution of all type specimens.

Acronyms of depositories (of primary types)

AMNH	American Museum of Natural History, New York, U.S.A.
BMNH	The Natural History Museum (formerly British Museum of Natural History), London, U.K.
CNT	Coll. Nico Nieser, Tiel, the Netherlands
HNHM	Hungarian Natural History Museum, Budapest, Hungary
NHMW	Natural History Museum, Vienna, Austria
NMPC	National Museum, Prague, Czech Republic
SEMC	KU Biodiversity Institute (formerly Snow Entomological Museum Collection), Lawrence, Kansas, U.S.A.
UPLB	Museum of Natural History, University of the Philippines, Los Baños, Laguna, Philippines
ZISP	Zoological Institute of the Russian Academy of Sciences, Saint Petersburg, Russia
ZRC	Zoological Reference Collection, Lee Kong Chian Natural History Museum, National University of Singapore, Singapore
ZVNU	Zoological Collection of Biological Museum, VNU University of Science, Hanoi, Vietnam

The types are listed by providing specimen identification numbers (# followed by number). Locality labels are cited in quotation marks. The sign \ indicates a line break. Identification and type labels are only cited for historical specimens.

A paragraph “Current status” is only added if it deviates from the original taxon.

A large number of hebrid specimens in NHMW have been illustrated by stacked photos; only a selection – chiefly the primary types – is printed in this catalogue. Many photos

were taken with a Leica DFC490 camera attached to a Leica Z16APO optics carrier, using Leica Application Suite V3.8, then stacked with ZereneStacker 64-bit, and processed with Adobe Photoshop 7.0. Some older photographs were prepared with different camera equipment. The photos were mostly prepared by Harald Bruckner and Katharina Zenz. Few photos were already used in publications which are cited. Scale bars represent 0.5 mm. If no scale bar is provided (Figs 1–4), body length (BL; measured from tip of head to tip of abdomen) is mentioned in the caption.

Specimens are macropterous, if not mentioned otherwise.

Catalogue

Hebrus beameri PORTER, 1952

Hebrus beameri PORTER, 1952a: 9. – Type locality: U.S.A., Kansas, Meade County; holotype in SEMC.

Type material. Paratypes (1 brachypterous male, #31577; 1 brachypterous female, #31578): “Meade Co. St. Pk\ Ks. VI-7-1950\ R. H. Beamer”.

Hebrus bilineatus CHAMPION, 1898 (Fig. 5)

Hebrus bilineatus CHAMPION, 1898: 119. – Type locality: Mexico, Chapultepec; holotype in NHMW.

Type material. Holotype (female, #31583): “Chapult”, “Bilimek\ Mexico\ 1883, II\ 424”.

Hebrus birmensis ZETTEL, 2011 (Fig. 1)

Hebrus birmensis ZETTEL, 2011: 92. – Type locality: Myanmar, Sagaing Division, Alaungdaw Katthapa National Park, Wakya Stream, 400 m a.s.l., N 22°19.094', E 94°28.823'; holotype in NHMW.

Type material. Holotype (male, #18048): “MYANMAR: Sagaing Div.\ Alaungdaw Katthapa NP\ Wakya Stream, 400 m\ 22° 19.173' N 94° 29.654' E\ 8.5.2003, lg. Boukal & al. (115)”.

Hebrus bituberculatus ZETTEL, 2006

Hebrus bituberculatus ZETTEL, 2006: 1021. – Type locality: Philippines, Cebu Island, Kawasan river near Matutinao; holotype in ZRCS. – Type region: Philippines, Cebu Island.

Type material. Paratypes (3 micropterous males, #17617–17619; 1 micropterous female, #17620): “Philippines: Cebu, Boljoon\ (Pobl.), river at Lusapon\ Bridge, freshwater, 5.12.\ 2005, leg. H. Zettel (437)”.

Hebrus boukali ZETTEL, 2000 (Fig. 6)

Hebrus boukali ZETTEL, 2000: 108. – Type locality: India, Kerala, 10 km WSW of Munnar, Kallar Valley, N 10°03', E 76°58', 1100–1200 m a.s.l.; holotype in NHMW. – Type region: Southern India, Kerala and Tamil Nadu.

Type material. Holotype (male, #17528) and **paratypes** (3 males, #17529–17531): “Kerala, 7.1.1999\ 10 km WSW Munnar\ Kallar Valley, 1100 m\ 10°03'N 76°58'E\ leg. D. Boukal (49)”; **paratype** (1 female, #17532): “INDIA: Tamil Nadu, 12.1.1999\ Palni Hills, 10°18'N 77°33'E\ Perumalmalai, 1500 m\ leg. D. Boukal (59)”.

Hebrus cebuensis ZETTEL, 2006 (Fig. 7)

Hebrus cebuensis ZETTEL, 2006: 1024. – Type locality: Philippines, Camotes Islands group, Poro Island, Poro, Libertad, Panganuron Falls; holotype in UPLB. – Type region: Philippines, Poro and Cebu Islands.

Type material. Holotype (male, #17622) and **paratypes** (2 males, #17623, 17624; 2 females, #17625, 17626): “Philippinen: Camotes Isl.\ Poro Isl., Poro, Libertad,\ Panganuron Falls, 26.2.2001\ leg. H.

Zettel (277)"; paratypes (1 male, #17627; 1 female, #17628): "Philippines: Cebu, Boljoon\ (Pobl.), river at Lusapon\ Bridge, freshwater, 5.12.\ 2005, leg. H. Zettel (437)".

***Hebrus fischeri* ZETTEL, 2004 (Fig. 8)**

Hebrus fischeri ZETTEL, 2004a: 548. – Type locality: Thailand, Chaiyaphum Province, Phu Khieo National Park, tributary to Huai Phrom Mai; holotype in NHMW.

Type material. Holotype (male, #17519): "Thailand: Chaiyaphum\ Phu Khieo NP, trib. to\ Huai Phrom Mai, 5.4.1994\ leg. W.D. Shepard (1054)".

***Hebrus hirsutulus* ZETTEL, 2004**

Hebrus hirsutulus ZETTEL, 2004a: 538. – Type locality: Philippines, Mindanao Island, Misamis Occidental Province, W of Ozamiz, Tangub, Lumban, N 8°06' E 123°42'; holotype in UPLB.

Type material. Paratypes (1 male, #17501; 1 female, #17502) "Philippinen: Mindanao\ Misamis occ., W Ozamiz\ Tangub, Lumban, 6.3.\ 1997, leg. H.Zettel (124)".

***Hebrus hissarensis* KANYUKOVA, 1997**

Hebrus hissarensis KANYUKOVA, 1997: 232. – Type locality: Tajikistan, Hissar Range, Khodzha-Obi-Garm; holotype in ZISP. – Type region: Tajikistan, Hissar Range.

Type material. Paratype (1 brachypterous male, #31612): "Tajikistan: Khodzha-obi-garm\ south slope of Hissor Range\ 11.IX.1943\ leg. A.N. Kirichenko"; paratypes (1 brachypterous male, #31613; 1 brachypterous female, #31614): "Tajikistan: Khodzha-obi-garm\ south slope of Hissor Range\ 5.IX.1943\ leg. A.N. Kirichenko"; paratype (1 brachypterous female, #31615): "Tajikistan: Kondara Gorge\ at Varzoba village, 1100 m\ 13.VII.1935\ leg. Gussakovskiy"; paratype (1 brachypterous male, #31616): "Tajikistan: Stalinabad\ [= Dushanbe], Gul'bista\ Stream, 20.IV.1943\ leg. A.N. Kirichenko"; paratype (1 female, #31617): "Tajikistan: Hissor Range\ confluence of rivers\ Maykhura\ and Ziddy, 1.VII.1947\ leg. A.N. Kirichenko".

***Hebrus judithae* ZETTEL, 2006**

Hebrus judithae ZETTEL, 2006: 1018. – Type locality: Philippines, Mindanao Island, Bukidnon Province, Malaybalay, Kaamulan Site, ca. 650 m a.s.l.; holotype in UPLB.

Type material. Paratypes (5 males, #17607–17610, 17612; 3 females, #17614–17616) "PHILIPPINEN: Mindanao\ Bukidnon Pr., Malaybalay\ Kaamulan Site, 650 m, 6.–7.\ 11.1996, leg. H. Zettel (90c)"; paratypes (1 male, #17611; 1 female, #17613) "PHILIPPINEN: Mindanao\ Bukidnon Pr., Malaybalay\ Kaamulan Site, 650 m, 12.\ 11.1996, leg. H.Zettel (90e)".

***Hebrus kanyukovae* KMENT & CARAPEZZA, 2022**

Hebrus kanyukovae KMENT & CARAPEZZA, 2022: 489. – Type locality: Yemen, Socotra Island, Halla area, Arher freshwater spring, N 2°33.0', E 54°27.6', 5 m a.s.l.; holotype in NMPC). – Type region: Yemen, Socotra Island.

Type material. Paratype (1 female, #31780): "YEMEN, SOCOTRA Island\ Halla area, ARHER freshwater\ spring in sand dune, Tamarix\ nilotica shrubs, 9-10.+15.vi.2012\ 12°33.0'N, 54°27.6'E, 5 m", "SOCOTRA expedition 2012\ J. Bezděk, J. Hájek, V. Hula,\ P. Kment, I. Malenovský,\ J. Niedořová & L. Purchart leg.".

***Hebrus kiritshenkoi* KANYUKOVA, 1997**

Hebrus kiritshenkoi KANYUKOVA, 1997: 227. – Type locality: Tajikistan, Kafirigan River near Sevzar; holotype in ZISP. – Type region: Tajikistan, Uzbekistan.

Type material. Paratype (1 male, #31618): "Buchara\ Schirabad 28.V.1912\ A. N. Kiritshenko."; paratypes (1 male, #31619, 1 female, #31620): "Tajikistan: Stalinabad\ [= Dushanbe], Lyuchob\ River, 19.II.1944\ leg. A.N. Kirichenko"; paratype (1 female, #31621): "Tajikistan: Shaartuz\ Kafirigan

River\ 8.VI.1944\ leg. A.N. Kirichenko”; paratype (1 male, #31622): “Tajikistan: Kafirigan River\ near Sevzar village\ 26.VIII.1943\ leg. A.N. Kirichenko”.

***Hebrus lacustris* ZETTEL, 2006**

Hebrus lacustris ZETTEL, 2006: 1025. – Type locality: Philippines, Camotes Islands group, Pacijan Island, San Francisco, Northern Poblacion, Lake Danao; holotype in UPLB. – Type region: Philippines: Luzon, Negros, Pacijan, and Busuanga Islands.

Type material. Paratypes (6 micropterous males, #17631–17636; 7 micropterous females, #17637–17643): “Philippines: Camotes Is.,\ Pacijan Isl., San Francisco\ Northern Pobl., Lake Danao,\ 27.2.2001, leg. Zettel (281)”; paratype (1 male, #17645): “PHILIPPINEN: Palawan Pr.\ Busuanga Is., 13 rd.km WNW\ Coron, Balulu Falls, 24.2.\ 1996, leg. H. Zettel (81)”; paratypes (1 micropterous male, #17647; 1 female, #17646): “Philippines: Luzon, Albay\ 40 km N Legaspi, 1 km W\ Malilipot, Busai Falls\ 23.2.1998, leg. Zettel (143)”; paratype (1 female, #17648): “Philippines: Philippines: Palawan Pr.\ Busuanga Isl., 13 rd.km\ WNW Coron, Balulu Falls\ 2.2.1999, leg. Zettel (171)”.

***Hebrus longipilosus* ZETTEL, 2003**

Hebrus longipilosus ZETTEL, 2003: 105. – Type locality: India, Goa, Molem, N 15°23', E 74°14', 120 m a.s.l.; holotype in HHNM. – Type region: India: Goa and Karnataka.

Type material. Paratype (male, #17499): “India Jog Falls\ Shimoga District\ Karnataka, 500 m”, “No.200.from mud\ 6.III. 1980.\ leg. Topál.”.

***Hebrus longisetosus* ZETTEL, 2004**

Hebrus longisetosus ZETTEL, 2004b: 542. – Type locality: Thailand, Chiang Mai Province, from Chiang Mai to Pai; holotype in ZRC.

Type material. Paratype (brachypterous male, #17500) “Thailand Chiang Mai\ to Pai, stream nr. waterfall\ 7.IX.1998, YCM 201B\ leg. C.M. Yang & T.B. Lim”.

***Hebrus major* CHAMPION, 1898 (Fig. 9)**

Hebrus major CHAMPION, 1898: 118. – Type locality: Mexico, Orizaba; holotype in NHMW.

Type material. Holotype (male, #31582): “Bilimek\ Mexico\ 1883 II\ Orizaba”.

***Hebrus montanus* KOLENATI, 1857**

Hebrus montanus KOLENATI, 1857: 474. – Type locality: Armenia, Mountain Karabagh Republic, Kopetdag Mountains, Lake “Sullü-ghöll”; lectotype and paralectotypes in NHMW.

Type material. Lectotype (male, #31586) and **paralectotypes** (3 females, #22793, 31588, 31589): “Karabach”, “Kolenati”; paralectotype (1 female, #31587) “Kasbek”, “Kolenati”.

Notes. For type locality see KMENT et al. (2016). For lectotype designation see ZETTEL et al. (2022).

***Hebrus murphyi* ZETTEL, 2004**

Hebrus murphyi ZETTEL, 2004b: 75. – Type locality: Philippines, Masbate Province, Burias Island, San Pasqual, Mabuhay, Taberna; holotype in UPLB.

Type material. Paratypes (2 apterous males, #17669, 17670; 1 apterous female, #17671): “Philippines: Burias, San\ Pasqual, Mabuhay, Taberna\ 19.2.2003, mangrove\ leg. H. Zettel (341d)”.

***Hebrus nasus* ZETTEL, 2000 (Fig. 10)**

Hebrus nasus ZETTEL, 2000: 107. – Type locality: Kerala, 10 km WSW of Munnar, Kallar Valley, N 10°03', E 76°58', 1100 m a.s.l.; holotype in NHMW.

Type material. Holotype (male, #17536) and **paratypes** (4 males, #17537–17540; 6 females, #17541–17546): “INDIA: Kerala, 7.1.1999\ 10 km WSW Munnar, 1100 m\ Kallar Valley, 10°03'N 76°58'E\ leg. D. Boukal (50)”.

Hebrus nieseri ZETTEL, 2004

Hebrus nieseri ZETTEL, 2004a: 544. – Type locality: Thailand, Phrae Province, 50 km NE of Phrae, Ban Huai Kaet; holotype in CNT. – Type region: Thailand: Phrae and Khon Kaen Provinces.

Type material. Paratype (female, #17518): “Thailand: Khon Kaen Prov.\ Phu Phan Kham NP, Ban Noon\ Hua Chang, Huai Sam Caen\ 21.11.1995, leg.H.Zettel (20b)”.

Hebrus nipponicus HORVÁTH, 1929

Hebrus nipponicus HORVÁTH, 1929: 314. – Type locality: Japan, Kanagawa and Okayama; lectotype (des. ZETTEL et al. 2022; from Kanagawa) in HNHM.

Type material. Paralectotype (brachypterous male, #17928): “Japonia\ Kanagawa\ Sauter”, “nipponicus\ Horv.\ det. Horváth”, “TYPUS”, “Paralectotypus\ *Hebrus nipponicus*\ Horváth, 1929 Ann. hist.-\ nat. Mus. natl. hung. 26: 314”.

Hebrus oxianus KANYUKOVA, 1997

Hebrus oxianus KANYUKOVA, 1997: 233. – Type locality: Tadzhikistan, Der'e-Kul' Lake, lower reaches of Vakhsh River; holotype in ZISP. – Type region: Tadzhikistan, Uzbekistan, Turkmenistan.

Type material. Paratypes (1 male, #31624; 2 females, #31623, 31625): “Tajikistan: lake Der'e-kul'\ left bank, lower reaches of Vakhsha River, 19.III.1944\ leg. A.N. Kirichenko”; paratypes (1 male, #31626; 1 female, #31627): “Tajikistan: lake Der'e-kul'\ left bank, lower reaches of Vakhsha River, 23.III.1944\ leg. A.N. Kirichenko”; paratype (1 female, #31628): “Turkmenskaya SSR [Turkmen-/istan], 150 km N Chardzhou\ 15 km N Kabakly village,\ 13.IX.-18.X.1989, leg. Isakov”.

Hebrus palawanensis ZETTEL, 2004 (Fig. 11)

Hebrus palawanensis ZETTEL, 2004a: 537. – Type locality: Philippines, Palawan Island, 9 km W of Puerta Princesa, Iwahig, Balsahan river, N 9°44', E 118°40', ca.10 m a.s.l.; holotype in NHMW. – Type region: Philippines, Palawan Island.

Type material. Holotype (brachypterous male, #17687): “PHILIPPINEN: Palawan\ 9 km W P. Princesa/ Iwahig, Balsahan riv. \ lg.Zettel, 24.3.1994(48)”; **paratype** (brachypterous male, #17688): “PHILIPPINEN: Palawan\ 7 km N Narra, Estrella\ Falls, 2.4.1994\ leg. H. Zettel (57)”.

Hebrus pangantihoni ZETTEL, 2006

Hebrus pangantihoni ZETTEL, 2006: 1016. – Type locality: Philippines, Polillo Island, Panuculan, water shed area; holotype in UPLB. – Type region: Philippines: Luzon and Polillo.

Type material. Paratypes (1 male, #17599; 1 female, #17600): “PHILIPPINEN: Luzon, Laguna\ Los Banos, Mt. Makiling\ Mud Springs, 1.11.1996\ leg. H. Zettel (88)”; paratypes (3 males, #17601–17603; 3 females, #17604–17606): “Philippinen: Polillo Is.\ Panuculan, water shed\ area, 14.–15.2.2004, leg.\ Zettel & Pangantihon (367)”.

Hebrus parameralis ZETTEL, 2004 (Fig. 12)

Hebrus parameralis ZETTEL, 2004a: 536. – Type locality: Philippines, Palawan Island, 10 km NE of Quezon, Tumarbong Falls, ca. N 9°28', E 118°14', ca. 15 m a.s.l.; holotype in NHMW.

Type material. Holotype (male, #17558) and **paratypes** (1 male, #17559; 3 females, #17560–17562): “PHILIPPINEN: Palawan\ 10 km NE Quezon\ Tumarbon[sic!] Falls, 3.–4.4.\ leg. Zettel 1994 (58)”.

Hebrus philippinus ZETTEL, 2006

Hebrus philippinus ZETTEL, 2006: 1011. – Type locality: Philippines, Cebu Island, S of Badian, Matutinao, Matutinao River below Kawasan Falls, N 9°48', E 123°22', ca. 2–50 m a.s.l.; holotype in

UPLB. – Type region: Philippines: Luzon, Polillo, Catanduanes, Masbate, Panay, Negros, Cebu, Poro, Siquijor, Samar, Leyte, Biliran, Bohol, Camiguin, and Mindanao Islands.

Type material. Paratypes (5 males, #17773–17777; 1 female, #17778): “PHILIPPINEN: Cebu, S Badian\ Matutinao, Kawasan Falls\ 2–50 m, 29.–30.11.1996\ leg. H. Zettel (112)””; paratype (1 male, #17779): “PHILIPPINEN: Cebu, S Badian\ Matutinao, Kawasan Falls\ 0–1 m, 30.11.1996\ leg. H. Zettel (112a)””; paratype (male, #17780): “PHILIPPINEN: Bohol\ NE Tagbilaran, S Sikatuna\ nr. Dangay, 26.–27.11.\ 1996, leg. H. Zettel (111)””; paratype (male, #17781): “PHILIPPINEN: Camiguin\ Catarman, Tuwasan Falls\ 17.11.1996\ leg. H. Zettel (98)””; paratypes (4 males, #17782–17785; 6 females, #17786–17790): “Philippinen: Camarines Sur\ 20 km E Naga, 5 km E Carolina\ Mt. Isarog, Malabsay Falls\ 19.2.1998, leg.Zettel (141)””; paratypes (3 males, #17792–17794; 1 female (#17795): “Philippinen: Camarines Sur\ 20 km E Naga, 3 km E Carolina\ Mainit Spring (“Hydro”)\ 20.2.1998, leg.Zettel (142)””; paratypes (8 males, #17796–17803): “Philippinen: Luzon, Albay\ 40 km N Legaspi, 1 km W\ Malilipot, Busai Falls\ 23.2.1998,leg.Zettel(143)””; paratypes (7 males, #17804–17810; 2 females, #17811, 17812): “Philippinen: Catanduanes\ E San Andres\ 11.–12.3.1999\ leg. H. Zettel (200)””; paratypes (3 females, #17812–17814): “Philippinen: Catanduanes\ E San Andres\ 11.–12.3.1999\ leg. H. Zettel (200)””; paratypes (4 males, #17815–17818; 2 females, #17819, 17820): “Philippinen: Catanduanes\ W Virac, Sto. Domingo\ Pajo River area, 10.3.\ 1999, leg. Zettel (199)””; paratypes (8 males, #17821–17828): “Philippinen: Cebu, S Badian\ Matutinao, Kawasan Falls\ 20–50 m, 12.11.2003\ leg. H. Zettel (352d)””; paratypes (3 males, #17829–17831; 3 females, #17832–17834)””; paratypes (3 females, #17835–17837): “Philippinen: Cebu, S Badian\ Matutinao, Kawasan Falls\ 20–50 m, 12.11.2003\ leg. H. Zettel (352d)””; paratypes (1 male, #17842; 2 females, #17843, 17844): “Philippinen: La Union\ Bacnotan, Don Mariano\ Marcos Mem. State Univ.\ NARTDI Falls, 23.10.2002\ leg. H. Zettel (310)””; paratypes (3 males, #17845–17847; 1 female, #17848): “Philippinen: Masbate Isl.\ 8 km SE Masbate, S Mobo\ Ubo Falls, 3.3.1998\ leg. H. Zettel (153)””; paratypes (2 males, #17849, 17850; 2 females, #17851, 17852): “PHILIPPINEN: Negros\ SE Murcia, Barangay\ Caliban riv., 250 m, 18.3.\ leg. H. Zettel 1994 (41)””; paratypes (3 males, #17853–17855; 2 females, #17856, 17857): “PHILIPPINEN: Panay,Ilo-Ilo\ 10 km NE Igaras,Nadsadan\ Falls, 500 m, 22.3.1994\ leg. H. Zettel (47)””; paratypes (2 females, #17858, 17859): “PHILIPPINEN: Camiguin\ Catarman, Tuwasan Falls\ 17.11.1996\ leg. H. Zettel (98)””; paratype (1 male, #17860): “PHILIPPINEN: Laguna, 1992\ Los Banos, Rest Area\ Bach von Tampalit Falls\ 17.11., leg. H.Zettel (1a)””; paratype (1 female, #17861): “Philippinen: Leyte\ Baybay, VISCA, 50 m.\ Lago-Lago Riv., 31.1.\ 2000, lg.H.Zettel (222b)””; paratype (1 female, #17862): “PHILIPPINEN: Laguna\ Los Banos, Bach von\ Tampalit Falls, 15.11.\ leg.H.Zettel 1993(22b)””; paratype (1 male, #17863): “PHILIPPINEN: N Panay\ Antique, Libertad\ 21.–22.1.1994\ leg. Seyfert & Graindl””; paratype (1 male, #17864): “Philippinen: Leyte\ Baybay, VISCA, creeks\ 250 m, 1.2.2000\ leg. H. Zettel (222c)””; paratype (1 female, #17865): “PHILIPPINEN: Camiguin\ Catarman, Tuwasan Falls\ 17.11.1996\ leg. H. Zettel (98)””; paratype (1 male, #17866): “Philippinen: Sorsogon\ NE Irosin, N San Roque\ Lake Bulusan, 630 m\ 26.2.1998, leg.Zettel(146)””; paratype (1 male, #17867): “Philippines: Bohol\ Antequera, Mag-Aso\ Falls, 28.11.2005\ leg. H. Zettel (426)””; paratype (1 male, #17868): “PHILIPPINEN: Camiguin\ Tupsan, Macao Cold\ Spring, 18.11.1996\ leg. H. Zettel (99)””; paratype (1 female, #17869): “Philippinen: Cebu, NNW\ Cebu City, Lusan, Lu-\ saran River, 9.11.2003\ leg. H. Zettel (350)””; paratype (1 female, #17870): “Philippines: Bohol, Loboc\ Loboc River at Loboc\ Falls, 27.11.2005\ leg. H. Zettel (424a)””; paratype (1 male, #17871): “Philippines: Bohol\ Antequera, Mag-Aso\ Falls, 28.11.2005\ leg. H. Zettel (426)””; paratype (1 male, #17872): “Philippinen: Catanduanes\ N Bato, S San Miguel\ Balongbong Falls, 7.3.\ 1999, leg. H. Zettel (195)””; paratype (1 female, #17873): “Philippines: Bohol, Loboc\ Loboc River at Loboc \ Falls, 27.11.2005\ leg. H. Zettel (424a)””; paratypes (10 males, #17874–17883; 3 females, #17884–17886): “Philippinen: Cebu, S Badian\ Matutinao, Kawasan Falls\ 1–30 m, 11.11.2003\ leg. Pangantihon (P352a)””; paratypes (5 males, #17887–17891; 3 females, #17892–17894): “Philippinen: Cebu, NNW\ Cebu City, Lusan, Lu-\ saran River, 9.11.2003\ leg. H. Zettel (350)””; paratypes (3 males, 17895, 17896, 17899; 2 females, #17897, 17898): “Philippinen: Cebu, S Badian\ Matutinao, Kawasan Falls\ 20–50 m, 12.11.2003\ leg. H. Zettel (352d)””; paratypes (6 males, #17900–17905; 2 females, #17907, 17908): “Philippinen: Camotes Isl.,\ Poro Isl., Poro, Libertad\ Panganuron Falls, 26.2.2001\ leg. H. Zettel (277)””; paratypes (1 male, #17909; 1 female, #17906): “Philippinen: Camotes Isl.,\ Poro Isl., Poro, Libertad\ Panganuron Falls, 26.2.2001\ leg. H. Zettel (277)””; paratypes (2 males, #17910, 17911): “Philippinen: Camarines Sur\ 20 km E Naga, 3 km E Carolina\ Mainit Spring (“Hydro”)\ 20.2.1998, leg. Zettel (142)””.

***Hebrus pictipennis* ZETTEL, 2004 (Fig. 13)**

Hebrus pictipennis ZETTEL, 2004a: 546. – Type locality: Thailand: Chiang Mai Province, Doi Suthep-Pui National Park, Montatarn Falls, N 18°49', E 98°55', ca. 700–750 m a.s.l.; holotype in NHMW. – Type region: Thailand: Chiang Mai and Sakhon Nakhon Provinces.

Type material. **Holotype** (male, #17674) and **paratypes** (1 male, #17675; 1 female, #17676): “Thailand: Chiang Mai Prov.\ Doi Suthep NP, Montatharn\ Falls, 700–750 m, 6.11.\ 1995, leg. H. Zettel (8)”; paratypes (3 males, #17677–17679; 1 female, #17680): “Thailand: Chiang Mai Prov.\ Doi Suthep NP, Doi Suthep\ nr. Ruesse Cave, 900–1000 m\ 5.11.1995, leg.H.Zettel (7)”; paratypes (2 males, #17681, 17682; 1 female, #17683): “Thailand: Chiang Mai Prov.\ Doi Suthep NP, nr. Wat Doi\ Suthep, 900 m, 1.11.1995\ leg. H. Zettel (3)”; paratypes (2 males, #17684, 17685): “Thailand: Chiang Mai Prov.\ Chiang Dao, Ban Yang Thung\ Pong, 500 m, 8.11.1995\ leg. H. Zettel (10)”; paratype (1 female, #17686): “Thailand: Sakhon Nakhon Pr.\ Phu Pan NP, 480–520 m\ 7.–8.12.1995\ leg. P. Schwendinger”.

***Hebrus piercei* PORTER, 1952**

Hebrus piercei PORTER, 1952b: 147. – Type locality: U.S.A.: Arizona, Pima County, Sabino Canyon; holotype in SEMC. – Type region: U.S.A.: Texas, Arizona, New Mexico.

Type material. **Paratypes** (1 male, #31579; 1 female, #31580): “Sabino Cn. Ar.\ VII-7-1950\ R. H. Beamer”.

Current status. *Hebrus hubbarti* PORTER, 1952 (synonymized by J. POLHEMUS & CHAPMAN 1970).

***Hebrus pilipes* KANYUKOVA, 1997**

Hebrus pilipes KANYUKOVA, 1997: 231. – Type locality: Ukraine, Crimea, Evpatoriya; holotype in ZISP. – Type region: Russia, Ukraine, Georgia, Armenia, Azerbaijan, Turkmenistan, Uzbekistan, Tajikistan, Kazakhstan, Iran.

Type material. **Paratype** (1 female, #31629): “Tajikistan: Novoabad nr.\ Stalinabad [= Dushanbe]\ 19.I.1944\ leg. A.N. Kirichenko”, paratype (1 male, #31630): “Tajikistan: Novoabad nr.\ Stalinabad [= Dushanbe]\ 20.I.1944\ leg. A.N. Kirichenko”; paratype (1 male, #31631): “Russia: Krasnodar Terr.\ Abinskaya, Taman’ area,\ Kuban’ Region, 26.IX.\ 1936, leg. Rysakov”; paratype (1 male, #31632): “Armenia: Dzhrvezh Gorge\ near Yerevan\ 22.V.1958\ leg. Akramovskaya”; paratype (1 male, #31633): “Ukraine: Krym [Crimea]\ Kerch’, 20.IV.1918\ leg. A.N. Kirichenko”; paratype (1 female, #31634): “Ukraine: Krym [Crimea]\ Kerch’, 7.IV.1918\ leg. A.N. Kirichenko”.

***Hebrus pilosellus* KANYUKOVA, 1997**

Hebrus pilosellus KANYUKOVA, 1997: 235. – Type locality: Russia, Primorsk Territory, 8 km E of Khasan Lake, “Golubiny Utes”; holotype in ZISP. – Type region: Russia, southern part of Primorsk Territory.

Type material. **Paratypes** (3 brachypterous males, #31657–31659; 3 brachypterous females, #31656, 31660, 31661): “Russia: Primorsk Kray\ 8 km E of Khasan Lake,\ “Golubiny Utes”, 25.VIII.\ 1996, leg. E.V. Kanyukova”.

***Hebrus polysetosus* ZETTEL, 2004 (Fig. 14)**

Hebrus polysetosus ZETTEL, 2004a: 541. – Type locality: Laos, Khammouan Province, surroundings of Ban Khoun Ngeun, N 18°07', E 104°29', 250 m a.s.l.; holotype in NHMW. – Type region: Laos: Khammouan Province; Thailand: Phrae Province.

Type material. **Holotype** (male, #17504) and **paratypes** (1 male, #17505; 8 females, #17506–17513): “LAOS centr., Khammouan prov. \ 4.–16.XI, 25.–30.3.1.2000\ BAN KHOUN NGEUN env.\ N 18°07', E 104°29', alt. 250 m\ E. Jendek & P. Pacholatko leg.”; paratypes (2 males, #17514, 17515): “Thailand: Phrae Prov.\ 50 km NE Phrae, Huai Kaet\ Kaet river, 17.–18.11.\ 1995, leg.H.Zettel (17b)”; paratype (1 micropterous female, #17516): “Thailand: Phrae Prov.\ 15 km E Phrae, Mae Khaem\ 16.11.1995, 350 m\ leg. H. Zettel (16b)”; paratype (1 male, #17517): “Thailand: Phrae Prov.\ 50 km NE Phrae, Huai Kaet\ 17.11.1995\ leg. H. Zettel (17a)”.

***Hebrus pseudocruciatus* ZETTEL, 2004** (Fig. 15)

Hebrus pseudocruciatus ZETTEL, 2004a: 545. – Type locality: Laos, Khammouan Province, surroundings of Ban Khoun Ngeun, N 18°07', E 104°29', 250 m a.s.l.; holotype in NHMW. – Type region: Laos: Khammouan Province; Thailand: Phrae and Chiang Mai Provinces.

Type material. **Holotype** (male, #17571) and **paratypes** (14 males, #17572–17585; 3 females, #17586–17588): “LAOS centr., Khammouan prov. \ 4.–16.XI, 25.–30.3.1.2000\ BAN KHOUN NGEUN env.\ N 18°07', E 104°29', alt. 250 m\ E. Jendek & P. Pacholatko leg.”; paratypes (5 males, #17589–17593; 5 females, #17594–17598): “Thailand: Phrae Prov.\ 50 km NE Phrae, Huai Kaet\ 17.11.1995\ leg. H. Zettel (17a)”.

***Hebrus schillhammeri* ZETTEL, 2011**

Hebrus schillhammeri ZETTEL, 2011: 94. – Type locality: Myanmar, Sagaing Division, Alaungdaw Katthapa National Park, Pagoda Stream, 350 m a.s.l., N 22° 19.094', E 94° 28.823'; holotype in NHMW.

Type material. **Holotype** (male, #18047): “MYANMAR: Sagaing Div.\ Alaungdaw Katthapa NP\ Pagoda Stream, 350 m\ 22° 19.094' N 94° 28.823' E\ 9.5.2003, lg. Boukal & al. (118)”.

***Hebrus seyfertii* ZETTEL, 2006**

Hebrus seyfertii ZETTEL, 2006: 1027. – Type locality: Philippines, Camiguin Island, Tupsan, Macao Cold Spring, 24 m a.s.l., N 9° 11.8, E 124° 46.5'; holotype in UPLB. – Type region: Philippines: Polillo, Camiguin, and Mindanao Islands.

Type material. **Paratypes** (3 brachypterous males, #17653–17655; 1 female, #17656; 5 brachypterous females, #17657–17661): “Philippinen: Mindanao\ Surigao d.N., Bacuag\ Dugsangon, 9.2.2000\ leg. H. Zettel (234)”; paratypes (2 brachypterous females, #17662, 17663): “Philippinen: Mindanao\ Surigao d.N., 40 km S\ Surigao, Songkoy Spring\ 8.2.2000, lg. Zettel (231)”; paratypes (4 micropterous males, #17664–17667): “PHILIPPINEN: Camiguin\ Tupsan, Macao Cold\ Spring, 18.11.1996\ leg. H. Zettel (99)”; paratype (1 micropterous male, #17668): PHILIPPINEN: Camiguin\ Agoho\ 31.1.1994\ leg. Seyfert & Graindl”.

***Hebrus soudani campestris* LINNAUORI, 1971**

Hebrus soudani campestris LINNAUORI, 1971: 365. – Type locality: South Sudan, Central Equatoria, 30 km N of Terakeka, ca. N 5°45', E 31°42', ca. 430 m a.s.l.; holotype in AMNH.

Type material. **Paratypes** (2 females glued on one paper card, #31585): “Sudan\ Equatoria\ Terakeka 2–6 III.63\ Linnavuori”.

Current status. *Hebrus campestris* (raised to species by LINNAUORI 1980).

***Hebrus tuberculifer* ZETTEL, 2006** (Fig. 16)

Hebrus tuberculifer ZETTEL, 2006: 1022. – Type locality: Malaysia, Sabah, Crocker Range, around km 56 of road Kota Kinabalu – Tambunan, environment of Sunsuron Waterfall., ca. 1100–1200 m a.s.l.; holotype in NHMW.

Type material. **Holotype** (micropterous male, #17621): “Malaysia, Sabah, Crocker\ Range, around km 56 of road\ Kota Kinabalu Tambunan, Sun- \ suron Waterfall env., 1100–1200 m\ a.s.l. 8.VI.1996, 5 a”.

***Hebrus ullrichi* ZETTEL, 2004**

Hebrus ullrichi ZETTEL, 2004a: 549. – Type locality: Indonesia, West Sumatra, Talu, Simpang Empat (or Simpang Ampek), Sukaminanti; holotype originally in Wolfgang G. Ullrich Collection, now probably in USNM.

Type material. **Paratypes** (4 males, #17547–17550; 4 females, #17551–17554): “VII 1992 West\ Sumatra / Talu\ Simpangempat”, “Sukaminanti\ light trap\ Dr. ULLRICH leg.”, “Dr. Wolfgang G.\ ULLRICH\ Collection”.

***Hebrus vietnamensis* ZETTEL & TRAN, 2016**

Hebrus vietnamensis ZETTEL & TRAN, 2016: 56. – Type locality: Vietnam, Hanoi, lotus pond near West Lake Water Park; holotype in ZVNU.

Type material. Paratypes (1 male, #31136; 1 female, #31137): “VIETNAM: Hanoi, lotus pond near West Lake Water Park\ 17.III.2010, leg. Pham T.M.\ Acquis.-Nr. 2017-05”.

***Hyrcanus angulatus* ZETTEL, 2000 (Fig. 17)**

Hyrcanus angulatus ZETTEL, 2000: 99. – Type locality: India, Kerala, 10 km WSW of Munnar, Kallar Valley, N 10°03', E 76°58', 1000 m a.s.l.; holotype in NHMW. – Type region: Southern India, Kerala, Karnataka, and Tamil Nadu.

Type material. Holotype (male, #22794) and **paratypes** (7 males, #22795–22801; 4 females, 22802–22805): “INDIA: Kerala, 5.1.1999\ 10 km WSW Munnar, 1000 m\ Kallar Valley, 10°03'N 76°58'E\ leg. D. Boukal (45)”; paratype (1 male, #22806): “INDIA: Tamil Nadu, 12.1.1999\ Palni Hills, 10°18'N 77°33'E\ Perumalmalai, 1500 m\ leg. D. Boukal (59)”; paratypes (2 males, #22807, 22808; 1 female, #22845): “INDIA: Tamil Nadu, 23.1.1999\ Nilgiri Hills, 5 km E Kundah\ 11°18'N 76°40'E, 1900 m\ leg. D. Boukal (80)”; paratypes (6 males, #22809, 22846, 22858–22861; 9 females, #22862–22870): “INDIA: Karnataka, Coorg\ Kakkabe env., 25.12.1998\ 12°15'N 75°35'E, 900–1200 m\ leg. D. Boukal (21)”; paratypes (6 males, #22847–22852; 5 females, #22853–22857): “INDIA: Kerala, 2.1.1999\ 35 km NNE Trivandrum, 800 m\ Ponmudi, 08°46'N 77°07'E\ leg. D. Boukal (38)”; paratypes (1 male #22871; 3 females, #22875–22877): “INDIA: Karnataka, Coorg\ Kakkabe env., 12°15'N\ 75°35'E, 21.12.1998\ leg. D.S. Boukal (12)”; paratypes (2 males, #22872, 22873; 1 female, #22874): “INDIA: Kerala, 7.1.1999\ 10 km WSW Munnar, 1100 m\ Kallar Valley, 10°03' N 76°58' E\ leg. D. Boukal (49)”; paratype (1 male, #22878): “INDIA: Kerala, 6.1.1999\ 10 km W Munnar, 1100 m\ Peschadu – Mangulam rd.\ 10°04'N 76°58'E\ leg. D. Boukal (48)”; paratypes (1 male, #22879; 5 females, 22880–22883, #22885): “INDIA: Kerala, 7.1.1999\ 10 km WSW Munnar, 1100 m\ Kallar Valley, 10°03' N 76°58' E\ leg. D. Boukal (50)”; paratype (1 female, #22884): “INDIA: Tami Nadu, 12.1.1999\ Palni Hills, 10°16'N 77°33'E\ Perumalmatal, 1600 m\ leg. D. Boukal (60)”; paratypes (1 male, #22886; 4 females, #22888–22891): “INDIA: Tamil Nadu, Palni Hills\ Kodai-Kanal – Batlagundu Rd.\ Macur env., 1200 m, 10°16'N\ 77°35'E, 16.1.1999\ leg. D.S. Boukal (68)”; paratype (1 male, #22887): “INDIA: Tamil Nadu, 16.1.1999\ Palni Hills, 10°16'N 77°35'E\ Kodai-kanal – Batlagundu rd.\ Machur env., 1200 m\ leg. D. Boukal (67)”.

***Hyrcanus boukali* ZETTEL, 2000 (Fig. 18)**

Hyrcanus boukali ZETTEL, 2000: 101. – Type locality: India, Tamil Nadu, Shevaroy Hills, Yercaud, environment of Kiliyur Falls, N 11°47', E 78°12', 1200 m a.s.l.; holotype in NHMW. – Type region: Tamil Nadu, Shevaroy and Nilgiri Hills.

Type material. Holotype (male, #23233) and **paratypes** (4 males, #23234–23237, 4 females, #23238–23241): “INDIA: Tamil Nadu, 25.1.1999\ Shevaroy Hills, Yercaud\ Kiliyur Falls env.\ 11°47'N 78°12'E, 1200 m\ leg. D. Boukal (86)”.

***Hyrcanus chenaе* ZETTEL, 1998 (Fig. 19)**

Hyrcanus chenaе ZETTEL, 1998: 592. – Type locality: China, Yunnan Province, ca. 100 km W of Baoshan, Gaoligongshan Nature Reserve; holotype in NHMW. – Type region: China, western Yunnan.

Type material. Holotype (male, #22895) and **paratypes** (2 males, #22898, 22899): “CHINA-Yunnan 14.–21.6.\ 100 km W Baoshan, 1993\ Gaoligongshan Nat. Res.\ E. Jendek & O. Sausa leg.”; paratypes (2 males, #22896, 22897): “CHINA: Yunnan 1993\ 100 km W Baoshan\ 14.–21.6.\ Gaoligongshan Nat.Res.\ leg. E. Jendek & O. Sausa”; paratype (1 female, #22900): “CHINA: W Yunnan 1993\ Baoshan env.\ 5.–8.6.\ leg. E. Jendek & O. Sausa”.

***Hyrcanus dispar* ANDERSEN, 1981**

Hyrcanus dispar ANDERSEN, 1981: 409. – Type locality: India, Uttarakhand, Kumaon, W of Almora; holotype in BMNH. – Type region: India, Uttarakhand, Kumaon.

Type material. Paratypes (2 males, #22903, 22904): “Ranikhet\ Kumaon\ H.G.C.”, “Champion\ Coll. B.M.\ 1927-409.”, “Hyrcanus\ dispar Anders. \ 1980\ Det.N.Møller Andersen”.

Hyrcanus draculus ZETTEL, 1998 (Fig. 20)

Hyrcanus draculus ZETTEL, 1998: 594. – Type locality: Thailand: Chiang Mai Province, Doi Suthep-Pui National Park, Montatarn Falls, N 18°49', E 98°55', ca. 700–750 m a.s.l.; holotype in NHMW. – Type region: Thailand: Chiang Mai and Mae Hong Son Provinces; Laos: Luang Nam Tha Province; China: Guangdong, Guangxi, Hong Kong, and Hunan Provinces.

Type material. Holotype (male, #22908) and **paratypes** (3 males, #22909, 22910, 22935; 1 female, 22936): “Thailand: Chiang Mai Prov. \ Doi Suthep NP, Montatharn\ Falls, 700–750 m, 6.II.\ 1995, leg. H. Zettel (8)”; paratype (1 male, #22911): “Thailand: Chiang Mai Prov.\ Doi Suthep NP, Montatharn\ Falls, 750–800 m, 2.II.\ 1995, leg. H. Zettel (4)”; paratypes (2 males, #22912, 22915; 1 female, #22944): “Thailand: Chiang Mai Prov.\Chiang Dao, Ban Yang Thung\ Pong, 500 m, 8.II.1995\ leg. H. Zettel (10)”; paratype (1 male, #22922): “Thailand: Chiang Mai Prov.\ W Mae Rim, Mae Sa NP\ Mae Sa Falls, 30.–31.II.\ 1995, leg. H. Zettel (2)”; paratypes (2 males, #22913, 22923; 1 female, #22956): “N-LAOS: Prov. Lg. Nam Tha\ ca. 30 km NW Lg. Nam Tha\ 16./18.6.1996, 800 m\ leg. Schillhammer (28, 30)”; paratypes (1 male, #22914; 2 females, #22943, #22945): “LAOS: Luang Nam Tha\ 20 km SE Muang Sing\ 950 m, 12.6.1996 \ leg. Schillhammer (25)”; paratype (1 female, #22955): “LAOS: Luang Nam Tha\ 20 km SE Muang Sing\ 700 m, 10.6.1996 \ leg. Schillhammer (20)”; paratypes (1 male, #22928; 2 females, #22924, 22969): Thailand: Mae Hong Son Prov.\ 3 km SE Mae Hong Son\ 13.II.1995\ leg. H. Zettel (14a)”; paratypes (1 male, #22940; 3 females, #22937–22939): “Thailand: Chaing Mai\ Suanrim, Nam Mae Sa\ 25.III.1994\ Leg. W.D. Shepard(1046)”; paratypes (2 males, #22916, 22917; 1 female, #22942): “HONGKONG (7) 1992\ N.T.- Tai Po N.Res.\ 27.VI. leg. Jäch”; paratypes (4 males, #22918–22920, 22934; 1 female, #22941): “HONG KONG: stream\ at Sheung Fa Shan\ leg. Dudgeon 12.9.1987”; paratype (1 male, #22929): “HONG KONG 1979\ Tai Po Kau N.Res.\ 30.3. K\ leg. DUDGEON”; paratype (1 female, #22930): “HONG KONG: 1979\ Tai Po Kau Nature Res.\ 9.3.\ leg. DUDGEON K; paratype (1 female, #22931): “HONG KONG: 1978\ Tai Po Kau Nature Res.\ 16.2.\ leg. DUDGEON”; paratype (1 female, #22932): “HONG KONG 1978\ Tai Po Kau N.Res.\ 6.7. K\ leg. DUDGEON”; paratype (1 male, #22933): “HONG KONG: 1978\ Tai Po Kau Nature Res.\ 13.4.\ leg. DUDGEON K”; paratype (1 female, #22946): “HONGKONG (5) 1992\ N.T.-Lam Tsuen\ 25.VI. leg. Jäch”; paratype (1 female, #22954): “HONGKONG (6) 1992\ Lantau Island\ 26. VI. leg. Jäch”; paratype (1 male, #22921): “CHINA: Guangxi, Bez. Yulin\ 30 km SW Yulin, Liuwan\ Forest Farm, Hänge des\ Kushan, 17.11.1993, 600–700 m\ leg. H. Schillhammer (21)”; paratype (1 male, #22926): “CHINA: SW-Hunan 1993\ SW Huitong, 4.II.\ Umg. Guangping, 360 m\ leg. Schönmann (10)”; paratype (1 female, #22952): “CHINA: SE Guangxi, Yulin\ Liuwan Forest Farm, 350–400 m, 16.II.\ 1993, leg. Schillhammer (20)”; paratype (1 female, #22927): “CHINA: SE-Guangxi\ Distr. Yulin\ Liuwan Mts. SW Yuin”, “17.11.1993\ Kushan, 300 m\ leg. Schillhammer (22)”.

Hyrcanus reichli ZETTEL, 1998 (Fig. 21)

Hyrcanus reichli ZETTEL, 1998: 597. – Type locality: India, Kerala, Cardamom Hills, 50 km NW of Pathanamthitta, N 9°25', E 77°05', 300 m a.s.l.; holotype in NHMW.

Type material. Holotype (male, #22990) and **paratype** (1 female, #22991): “S-INDIEN, Kerala\ Cardamom Hills, 300 m\ 50 km NW Pathanamthitta\ 77°05'E/09°25'N”, “Small Stream near\ Pam-baiyar River\ 27.–29.12.1993 (12)\ leg. Boukal & Kejval”.

Hyrcanus shepardii ZETTEL, 1998 (Fig. 22)

Hyrcanus shepardii ZETTEL, 1998: 598. – Type locality: Thailand: Phetchabun Province, Nam Nao National Park, Prom Laeng; holotype in NHMW. – Type region: Thailand: Phetchabun Province, Nam Nao National Park.

Type material. Holotype (male, #22997) and **paratypes** (15 males, #22998–23012; 11 females, #23013–23022): “Thailand: Petchabun\ Nam Nao NP, Prom Laeng\ 22.III.1994\ leg.W.D.Shepard (1040)”.

***Merragata brevis* CHAMPION, 1898 (Fig. 23)**

Merragata brevis CHAMPION, 1898: 122. – Type localities: Guatemala: San Gerónimo, Guatemala City and Rio Naranjo; Panama: Tolé and Panama City; Mexico: Ventanas in Durango and La Noria in Sinaloa; syntypes (type depository not stated by author) in BMNH (fide N.M. Andersen), NHMW, and probably other institutions.

Type material. Syntype (female, #31581): “Guatemala\ City\ Champion”.

Current status. *Lipogomphus brevis* (transferred to *Lipogomphus* by ANDERSEN 1981: 388).

***Neotimasius bruckneri* ZETTEL, 2013 (Fig. 2)**

Neotimasius bruckneri ZETTEL, 2013: 29. – Type locality: India, Madhya Pradesh, Hoshangabad District, ca. 30 km S of Piparia, ca. 5 km NNE of Pachmarhi, road between Matkuli and Pachmarhi, Panar Pani stream, 22°30'25", E 78°26'43", ca. 850 m a.s.l.; holotype in NHMW.

Type material. Holotype (female, #9304): “INDIA: (MP6) southern\ Madhya Pradesh\ Hoshangabad Dist., Panar\ Pani [stream], 26.,27.II.2008\ leg. M.Jäch, S&P Sharma”, “ca. 30 km S Piparia\ ca. 5 km NNE Pachmarhi\ Matkuli – Pachmarhi road\ ca. 850 m\ 22°30'25"N/78°26'43"E”.

***Nieserius brachypterus* ZETTEL, 1999 (Fig. 24)**

Nieserius brachypterus ZETTEL, 1999: 46. – Type locality: Laos, Luang Nam Tha Province, 20 km NE of Muang Sing, 700 m a.s.l.; holotype in NHMW.

Type material. Holotype (brachypterous male, #22783) and **paratypes** (1 brachypterous male, #22784; 1 brachypterous female, #22785): “LAOS: Luang Nam Tha Pr.\ 20 km NE Muang Sing\ 700 m. 10.6.1996\ leg. Schillhammer (20)”.

***Nieserius subaquaticus* ZETTEL, 1999 (Figs 4, 25)**

Nieserius subaquaticus ZETTEL, 1999: 43. – Type locality: Thailand, Mae Hong Son Province, 12 km S of Mae Hong Son, Pha Bong village, N 19°11', E 97°59'; holotype in NHMW. – Type region: Thailand, Mae Hong Son and Chiang Mai Provinces.

Type material. Holotype (brachypterous male, #22714): and **paratypes** (12 brachypterous males, #22715, #22717–22719, 22721–22727, 22752; 11 brachypterous females, #22728–22735, 22737–22738; #22741): “Thailand: Mae Hong Son Prov.\ Pha Bong, 12 km S Mae Hong\ Son, 12.II.1995\ leg. H. Zettel (13a)”; paratypes (5 brachypterous males #22736, 22759, 22760, 22763, 22764; 5 brachypterous females, #22716, 22761, 22766–22768; 3 nymphs, #22758, 22762, 22765): “Thailand: Mae Hong Son Prov.\ 3 km SE Mae Hong Son\ 13.II.1995\ leg. H. Zettel (14a)”; paratypes (1 brachypterous male, #22720): “Thailand: Chiang Mai\ Doi Sutep NP, Monthatarn\ Falls, 24.III.1994\ leg.W.D.Shepard (1044)”; paratypes (2 brachypterous males, #22739, 22740): “Thailand: Mae Hong Son Prov.\ Pha Bong, 12 km S Mae Hong\ Son, 12.II.1995\ leg. H. Zettel (13b)”; paratypes (6 brachypterous males, #22748, 22749, 22753–22756; 6 brachypterous females #22742–22747; 1 nymph, #22757): “Thailand: Mae Hong Son Prov.\ 3 km SE Mae Hong Son\ 13.II.1995\ leg. H. Zettel (14b)”; paratypes (2 brachypterous males, #22750, 22751): “Thailand: Mae Hong Son Prov.\ 17 rd.km N Mae Hong Son\ Mok Cham Pae, nr.Fish Cave\ 11.II.1995, leg.Zettel(12a)”.

***Nieserius tenuipes* ZETTEL, 1999 (Fig. 26)**

Nieserius tenuipes ZETTEL, 1999: 48. – Type locality: Nepal, Gandaki Province, Syangja, Andhi Khola; holotype in NHMW. – Type region: Nepal, Gandaki Province.

Type material. Holotype (female, #22786): “W-NEPAL: Syanga\ Andhi Khola\ 22.2.1994\ lg. Sharma & Nesemann”. **Paratype** (female, #22787): “NEPAL: Seti Nadi\ Pokhara, Kaski\ S.18, 11.11.1993\ leg. S. Sharma”.

***Timasius alveus* ZETTEL & PANGANTIHON, 2020 (Fig. 3)**

Timasius alveus ZETTEL & PANGANTIHON, 2020: 10. – Type locality: Cambodia, Monduliri Province, Saen Monourom City, west of Kroeng Saen Monourom Waterfall, N 12°26.58', E 107°09.58', 612 m

a.s.l.; holotype in NHMW. – Type region: Cambodia, Mondulkiri Province; Vietnam, Gia Lai-Kontum Province.

Type material. Holotype (male, #31566): “Cambodia: Mondulkiri Prov.\ Saen Monourom City, W Kroeng\ Saen Monourom, N 12°26.58' E 107°09.58', 612 m, 22.XI.\ leg. Pangantihon P592 (MO-4)”; **paratypes** (7 males, #31567–31573; 3 females; #31574–31576): “S Vietnam, 40 km NW An Khe\ Buon Luoi, 14°10'N, 108°30'E\ 620–750 m, 28.3.–12.4.1995\ leg. Pacholatko & Dembicky”.

Timasius anderseni ZETTEL, 2004 (Fig. 27)

Timasius anderseni ZETTEL, 2004c: 247. – Type locality: Vietnam, Lam Dong Province, 12 km N of Dalat, Langbiang, N 12°01', E 108°25'; holotype in NHMW.

Type material. Holotype (female, #5314): “S VIETNAM, 28.–30.4.1994\ 12 km N of Dalat-Lang-Ban\ P. Pacholátko & L. Dembicky leg.”.

Timasius bhutanensis ZETTEL, 2007 (Fig. 28)

Timasius bhutanensis ZETTEL, 2007: 84. – Type locality: Bhutan, Punakha Province, 6 km NNW of Punakha, Lakhu, N 27°37'31", E 89°49'31", ca. 1300 m a.s.l.; holotype in NHMW. – Type region: Bhutan: Punakha Province, Wangdi Phodrang, and Sarpang Provinces.

Type material. Holotype (male, #5707) and **paratypes** (2 females, #5708, 5709): “BHUTAN: Punakha Prov.\ 6 km NNW Punakha\ Lakhu, ca. 1300 m\ 27°37'31"N 89°49'31"E\ 24.11.2005, leg. M. Jäch (18)”; paratype (1 female, #5710): “BHUTAN: Wangdi Phodrang Pr.\ 40 km SSE Wangdi Phodrang\ Puna Tsang Vall., ca. 790 m\ 27°12'38"N 90°03'05"E\ 25.11.2005, leg. M. Jäch (21)”; paratype (1 female, #5711): “BHUTAN: Sarpang Prov.\ Geylephug – Shemgang rd.\ 10 km NNE Geylephug, 400 m\ 26°56'43"N 90°31'29"E\ 26.11.2005, leg. M. Jäch (29)”.

Timasius cornutus ZETTEL, 2000 (Fig. 29)

Timasius cornutus ZETTEL, 2000: 102. – Type locality: India, Tamil Nadu, Nilgiri Hills, Melkudah, N 11°14', E 76°37', 2100 m a.s.l.; holotype in NHMW. – Type region: India, Tamil Nadu, Nilgiri Hills.

Type material. Holotype (male, #5726): “INDIA: Tamil Nadu, 23.1.1999\ Nilgiri Hills, Melkudah\ 11°14'N 76°37'E, 2100 m\ leg. D. Boukal (82)”; **paratype** (female, #5727): “INDIA: Tamil Nadu, 23.1.1999\ Nilgiri Hills, 5 km E Kundah\ 11°18'N 76°40'E, 1900 m\ leg. D. Boukal (80)”; paratypes (2 females, #5728, 5729): “INDIA: Tamil Nadu, 19.1.1999\ Nilgiri Hills, Kotagiri env.\ Honnatti, 11°25'N 76°55'E\ 1500 m, leg. D. Boukal (75)”.

Timasius fenestratus ZETTEL, 2013

Timasius fenestratus ZETTEL, 2013: 32. – Type locality: India, Madhya Pradesh, Chhindwara District, ca. 10 km E of Matkuli, near Mahul Jhir, east of Jhirpa, Bhadhua Chora stream, N 22°35'59", E 78°35'30", 400 m a.s.l. – Type region: India, Madhya Pradesh.

Type material. Holotype (male, #9305): “INDIA: (MP11) southern\ Madhya Pradesh\ Chhindwara Dist., Bhadhua\ Chora (stream), 28.II.2008\ leg. M.Jäch, S&P Sharma”, “ca. 10 km E Matkuli\ near Mahul Jhir\ east of Jhirpa, 400 m\ 22°35'59"N/78°35'30"E”; **paratype** (1 male, #9306): “INDIA: (MP13) southern\ Madhya Pradesh\ Hoshangabad Dist.\ River Denwa, 28.II.2008\ leg. M.Jäch, S&P Sharma”, “ca. 8 km SSE Matkuli\ Satpura Range\ ca. 400 m\ 22°34'29"N/78°29'43"E”; paratypes (3 females, #9307–9309): “INDIA: (MP17) southwestern\ Madhya Pradesh.\ Indore Dist.\ Choral Nadi [river], 1.III.2008\ leg. M.Jäch, S&P Sharma”, “Indore–Barwah road, NW of\ Choral, ca. 20 km SSE Indore,\ Vindhya Range, 350 m\ 22°27' 50"N/75°55'42"E”.

Timasius goldmarie ZETTEL, 2011

Timasius goldmarie ZETTEL, 2011: 96. – Type locality: Myanmar, Sagaing Division, Alaungdaw Katthapa National Park, Pagoda Stream, 360 m a.s.l., N 22°19.084', E 94°28.744'; holotype in NHMW. – Type region: Myanmar, Sagaing Division, Alaungdaw Katthapa National Park.

Type material. Holotype (male, #5416): “MYANMAR: Sagaing Div.\ Alaungdaw Katthapa NP\ Pagoda Stream, 360 m\ 22° 19.084' N 94° 28.744' E\ 4.5.2003, lg. Boukal & al. (102)”; **paratypes**

(2 males, #5417, 5418; 3 females, #5419–5421): “MYANMAR: Sagaing Div.\ Alaungdaw Katthapa NP\ Pagoda Stream, 350 m\ 22° 19.094' N 94° 28.823' E\ 5.5.2003, lg. Boukal & al. (107)”; paratype (1 female, #5422): “MYANMAR: Sagaing Div.\ Alaungdaw Katthapa NP\ Pagoda Stream, 360 m\ 22° 19.09' N 94° 28.82' E\ 7.5.2003, l. Boukal & al. (112)”; paratypes (1 male, #5423; 2 females, #5424, 5425): “MYANMAR: Sagaing Div.\ Alaungdaw Katthapa NP\ Pagoda Stream, 360 m\ 22°19.084' N 94°28.744' E\ 7.5.2003, lg. Boukal & al. (113)”; paratype (1 male, #5426): “MYANMAR: Sagaing Div.\ Alaungdaw Katthapa NP\ Pagoda Stream, 350 m\ 22° 19.094' N 94°28.823' E\ 9.5.2003, lg. Boukal & al. (118)”; paratype (1 male, #5427): “MYANMAR: Sagaing Div.\ Alaungdaw Katthapa NP\ Wakya Stream, 400 m\ 22°19.173' N 94°29.654' E\ 8.5.2003, lg. Boukal & al. (115)”.

Timasius gracilis ZETTEL, 2004 (Fig. 30)

Timasius gracilis ZETTEL, 2004c: 248. – Type locality: China, Hongkong, New Territories, Tai Po Kau Nature Reserve, ca. N 22°25', E 114°10'; holotype in NHMW.

Type material. **Holotype** (male, #5322) and **paratype** (1 female, #5323): “HONGKONG (7) 1992/ N.T.- Tai Po N.Res./ 27.VI. leg. Jäch”; paratype (1 male, #5324): “HONG KONG 979/ Tai Po Kau N.Res./ 8.3. K/ leg. DUDGEON”.

Timasius indicus ZETTEL, 2004 (Fig. 31)

Timasius indicus ZETTEL, 2004c: 248. – Type locality: India, Meghalaya, 3 km E Tura, N 25°30', E 90°14', 1150 m a.s.l.; holotype in NHMW.

Type material. **Holotype** (male, #5325) and **paratypes** (1 male, #3527; 1 female, #3526): “NE-INDIA: Meghalaya\ 3 km E Tura, 1150 m\ 25°30'N 90°14'E, 18.IV.1999\ leg. Dembicky & Pacholatko”; paratype (1 female, #3528): “NE-INDIA: Meghalaya,1999\ 3 km E Tura; 1150 m\ 25°30'N 90°14'E; 4.v.;\ Dembický & Pacholátko leg.”

Timasius jaechi ZETTEL & CHEN, 2000 (Fig. 32)

Timasius jaechi ZETTEL & CHEN, 2000: 1196. – Type locality: Malaysia, Borneo, Sarawak, Kelabit Highlands, 5 km E of Bareo, ca. N 3°44', E 115°30', ca. 1000 m a.s.l.; holotype in NHMW.

Type material. **Holotype** (male, #5451): “MALAYSIA: Sarawak\ Kelabit Highland\ 5 km E Bareo Pa Ukat\ 1000 m, 1.3.1993”, “breiter Fluß [broad stream] leg. M. Jäch”; **paratype** (1 male, #5450): “MALAYSIA: Sarawak\ Kelabit Highland\ 1000–1200 m, (14)\ Bareo – Arur Dalem”, “26.2.–1.3.1993\ leg. M. Jäch”.

Timasius kodadai ZETTEL & CHEN, 2000 (Fig. 33)

Timasius kodadai ZETTEL & CHEN, 2000: 1197. – Type locality: Malaysia, Borneo, Sarawak, 25 km E of Kapit; holotype in NHMW.

Type material. **Holotype** (male, #5691) and **paratype** (1 male, #5692): “SARAWAK, III.1994/ Rumah Kebau anak muggot/ Ng sebong Baleh/ 25 km E Kapit, l.Kodada”.

Timasius laoticus ZETTEL, 2004 (Fig. 34)

Timasius laoticus ZETTEL, 2004c: 250. – Type locality: Laos, Bolikhamsai Province, Ban Nape – Kaew Nua Pass, N 18°22.3', E 105°09.1', 500–700 m a.s.l.; holotype in NHMW.

Type material. **Holotype** (male, #5329) and **paratypes** (4 males, #5330, 5331, 5334, 5335; 2 females, #5332, 5333): “LAOS centr. Bolikhamsai prov.\ BAN NAPE – Kaew Nua Pass,\ 18.4.–1.5.1998, alt. 600±100 m,\ N 18°22.3, E 105°09.1(GPS),\ E Jendek & O. Sausa leg.”.

Timasius malayensis ZETTEL, 2004 (Fig. 35)

Timasius malayensis ZETTEL, 2004c: 250. – Type locality: Malaysia, Perak, 19 km SW of Ringlet, ca. N 4°18', E 101°18'; holotype in NHMW. – Type region: Malaysia: Perak, Penang, Pahang.

Type material. **Holotype** (male, #5337) and **paratypes** (3 females, #5338–5340): “Malaysia: Perak\ 19 km SW Ringlat, unnamed\ stream, 12.IV.1994\ leg. W.D. Shepard (1075)”; paratypes (1 male,

#5341; 1 female, #5342): “Malaysia: Perak\ 17 km NE Tapah, unnamed\ stream, 11.IV.1994\ leg. W.D. Shepard (1073)”; paratype (1 female, #5343): “MALAYSIA 27.1.1992/ PENANG/ Botan. Garten [Penang City, Botanical Garden]/ leg. Jäch (9)”; paratype (1 female, #5344): “MALAYSIA: Perak/ 5 km E Taiping, Bukit/ Lerut, 600–800 m/ leg. R. Schuh, 3.8.1993”.

Timasius montanus ZETTEL, 2004 (Fig. 36)

Timasius montanus ZETTEL, 2004c: 253. – Type locality: Thailand: Chiang Mai Province, Doi Suthep-Pui National Park, Doi Suthep, near Tham Phra Ruesi, ca. N 18°48', E 98°54', ca. 900–1000 m a.s.l.; holotype in NHMW. – Type region: Thailand: Chiang Mai Province, Doi Suthep-Pui National Park.

Type material. **Holotype** (male, #5402) and **paratypes** (2 males, #5403, 5404, 1 female, #5405): “Thailand: Chiang Mai Prov.\ Doi Suthep NP, Doi Suthep\ nr. Ruesse Cave, 900–1000 m\ 5.11.1995, leg. H. Zettel (7)”; paratypes (2 males, #5406, 5407; 1 female, #5408): “Thailand: Chiang Mai Prov.\ Doi Suthep NP, Montatharn\ Falls, 750–800 m, 2.11.\ 1995, leg. H. Zettel (4)”; paratype (1 female, #5409): “Thailand: Chiang Mai\ Doi Sutep NP, Huai\ Sa Lad, 24.III.1994\ leg. W.D. Shepard (1043)”.

Timasius nepalensis ZETTEL, 2012

Timasius nepalensis ZETTEL, 2012: 181. – Type locality: Nepal, Central Nepal, Bagmati Zone, Jakeshwori stream (tributary to Indrawati River), N 27°49'27", E 85°33'32", 1347 m a.s.l.; holotype in NHMW.

Type material. **Holotype** (male, #5715): “NEPAL (C): Indrawati River Basin\ Mahadevsthan, Jakeshwori stream\ 1347 m, E85°33'32" N27°49'27"\ hygroptetric, 15.XI.2009\ leg. R.D. Tachamo (N03JA013)”.

Timasius nesemanni ZETTEL, 2012

Timasius nesemanni ZETTEL, 2012: 180. – Type locality: Nepal, Central Nepal, Bagmati Zone, Indrawati River Basin, Sindhupalchok near Gobre, ca. N 27°51', E 85°40', ca. 2200–2400 m a.s.l., between Melamchi and Panch Pokhari south of Langtang National Park; holotype in NHMW.

Type material. **Holotype** (brachypterous male, #5712) and **paratypes** (1 brachypterous female, #5713; 1 brachypterous male, #5714): “NEPAL: Shindupalchwok\ Indrawati valley: near Gobre\ 15.12.06; leg. H. Neesemann, H.D.\ Tachamo & D.N. Shah”.

Timasius penicillatus ZETTEL, 2000 (Fig. 37)

Timasius penicillatus ZETTEL, 2000: 104. – Type locality: India, Tamil Nadu, Palni Hills; (according to ZETTEL 2000:) Perumalmalai, N 10°16', E 77°33', 1600 m a.s.l.; (corrected according to label data:) Kodaikanal, Bear Shola Falls, N 10°14', E 77°29', 2100 m a.s.l.; holotype in NHMW.

Type material. **Holotype** (male, #5730) and **paratype** (female, #5731): “INDIA: Tamil Nadu, 11.1.1999\ Palni Hills, 10°14'N 77°29'E\ Kodaikanal, Bear Shola Falls,\ 2100 m, leg. D. Boukal (58)”.

Notes: The exact type locality (Perumalmalai) in the Palni Hills given by ZETTEL (2000) is erroneous. It is here corrected according to the label data: Kodaikanal, Bear Shola Falls.

Timasius schaeferi ZETTEL, 2011

Timasius schaeferi ZETTEL, 2011: 98. – Type locality: Myanmar, Sagaing Division, Alaungdaw Katthapa National Park, Pagoda Stream, N 22°19.084', E 94°28.744', 360 m a.s.l.; holotype in NHMW. – Type region: Myanmar, Sagaing Division, Alaungdaw Katthapa National Park.

Type material. **Holotype** (male, #5428) and **paratypes** (2 males, #5429, 5430): “MYANMAR: Sagaing Div.\ Alaungdaw Katthapa NP\ Pagoda Stream, 360 m\ 22°19.084' N 94°28.744' E\ 4.5.2003, lg. Boukal & al. (102)”; paratypes (2 males, #5431, 5432; 2 females, #5433, 5434): “MYANMAR: Sagaing Div.\ Alaungdaw Katthapa NP\ Pagoda Stream, 350 m\ 22°19.094' N 94°28.823' E\ 5.5.2003, lg. Boukal & al. (107)”; paratype (male, #5435): “MYANMAR: Sagaing Div.\ Alaungdaw Katthapa

NP\ Pagoda Stream, 360 m\ 22° 19.084' N 94° 28.744' E\ 7.5.2003, lg. Boukal & al. (113)"; paratypes (4 males, #5436–5439): "MYANMAR: Sagaing Div.\ Alaungdaw Katthapa NP\ Wakya Stream, 400 m\ 22° 19.173' N 94° 29.654' E\ 8.5.2003, lg. Boukal & al. (115)"; paratypes (4 females, #5440–5443): "MYANMAR: Sagaing Div.\ Alaungdaw Katthapa NP\ Pagoda Stream, 350 m\ 22° 19.094' N 94° 28.823' E\ 9.5.2003, lg. Boukal & al (118)"; paratype (male, #5444): "MYANMAR: Sagaing Div.\ Alaungdaw Katthapa NP\ Pagoda Stream, 350 m\ 22° 19.113' N 94° 28.815' E\ 13.5.2003, lg. Boukal & al. (122)".

***Timasius schuhi* ZETTEL, 2004 (Fig. 38)**

Timasius schuhi ZETTEL, 2004c: 255. – Type locality: Malaysia, Pahang, Tioman Island, Tekek, ca. N 2°49', E 104°09'; holotype in NHMW.

Type material. Holotype (male, #5345) and **paratypes** (2 males, #5346, 5347; 2 females, #5348, 5349): "MALAYSIA: Pahang\ Tioman Isl., Tekek\ leg. R.Schuh, 16.7.1993".

***Timasius schwendingeri* ZETTEL, 2004 (Fig. 39)**

Timasius schwendingeri ZETTEL, 2004c: 255. – Type locality: Thailand, Sakhon Nakhon Province, Phu Pan National Park, 480–520 m a.s.l.; holotype in NHMW.

Type material. Holotype (male, #5410): "Thailand: Sakhon Nakhon Pr.\ Phu Pan NP, 480–520 m\ 7.–8.12.1995\ leg. P. Schwendinger".

***Timasius tachamoe* ZETTEL, 2012**

Timasius tachamoe ZETTEL, 2012: 182. – Type locality: Nepal, Central Nepal, Bagmati Zone, 15 km N of Bageshwar, Sirsire dada, Gyalthum stream (tributary to Indrawati River, N 27°53'23" E 85°30'55", 1310 m a.s.l.; holotype in NHMW.

Type material. Holotype (male, #5445): "C-NEPAL: Bagmati Zone\ Indrawati river basin\ Gyalthum Stream\ 1310 m, 16.11.2009\ 85°30'55"E/27°53'23"N\ leg. R.D. Tachamo (GY02)", "Sirsire dada\ 1 km upstr. from confluence\ with right trib. of Gylthum\ 3rd order str., megalithal\ open grassland"; **paratypes** (1 female, #5446; 1 male, #5449): "IND: Uttaranchal\ Riv. Falda, Bageshwar Dist.\ 29°55'11"N/79°52'08"E\ 14.XI.2006\ leg. M.A. Jäch (20)"; paratype (1 male, #5447): "NE-INDIA: Meghalaya\ W Garo Hills\ Nokrek NP, ca. 1100 m\ 25°29.6'N 90°19.5'E\ 9.–17.5.1996\ leg. Jendek & Sausa"; paratype (1 male, #5448): "NE-INDIA: Meghalaya 1999\ 3 km E Tura; 1150 m;\ 25°30'N 90°14'E; 4.v.;\ Dembicky & Pacholatko leg.".

***Timasius wangi* ZETTEL, 1998 (Fig. 40)**

Timasius wangi ZETTEL, 1998: 601. – Type locality: China, Taiwan, New Taipei City, Wulai; holotype in NHMW.

Type material. Holotype (male, #5718) and **paratypes** (3 females, #5719–5721): "TAIWAN: Taipei\ Wulai\ 11.6.1995\ leg. L.J. Wang".

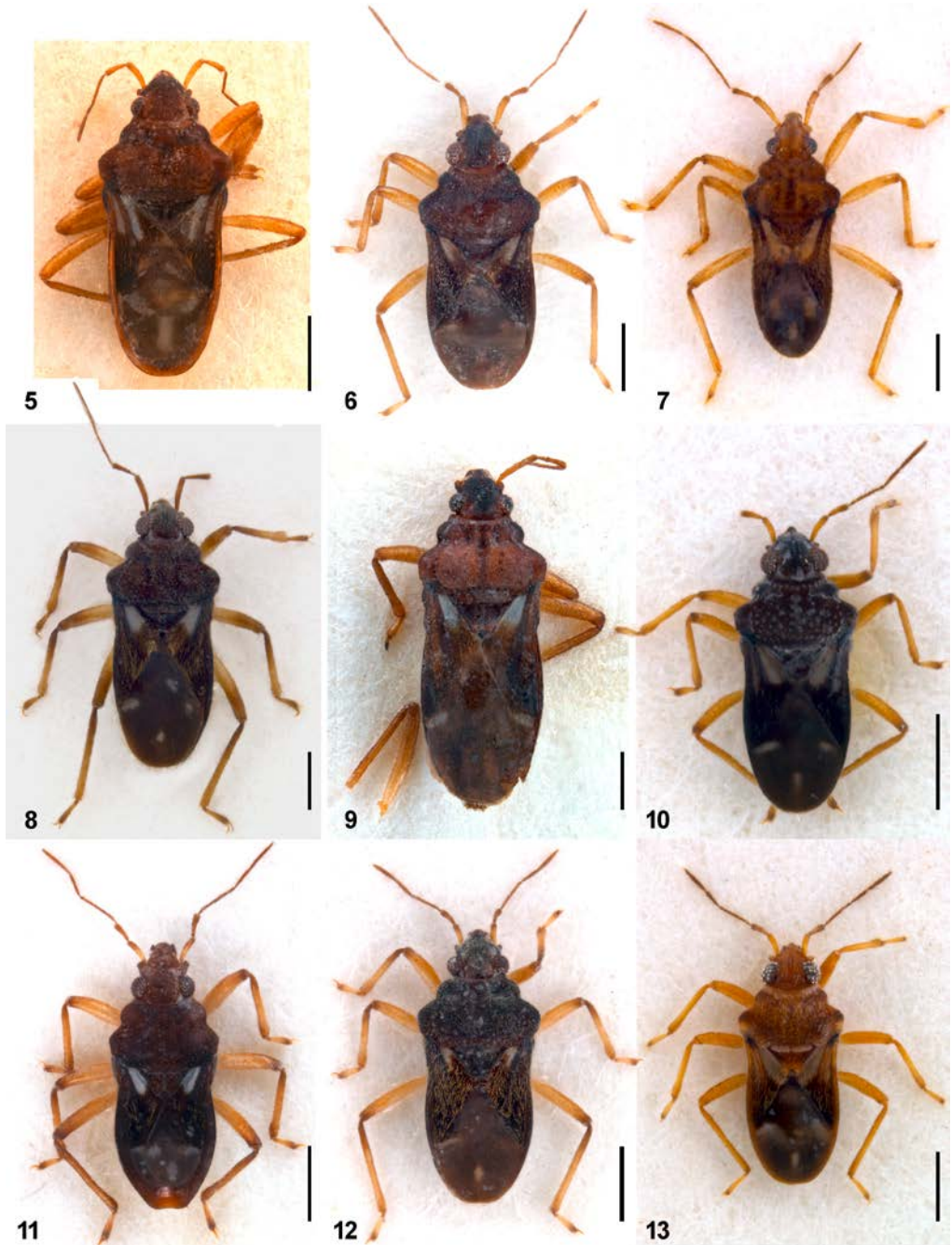
***Timasius yangae* ZETTEL, 2004**

Timasius yangae ZETTEL, 2004c: 257. – Type locality: Malaysia, Pahang, Tioman Island, Sungei Ayer Besar tributary and waterfall, Juara track; holotype in ZRC. – Type region: Malaysia: Pahang, Tioman Island.

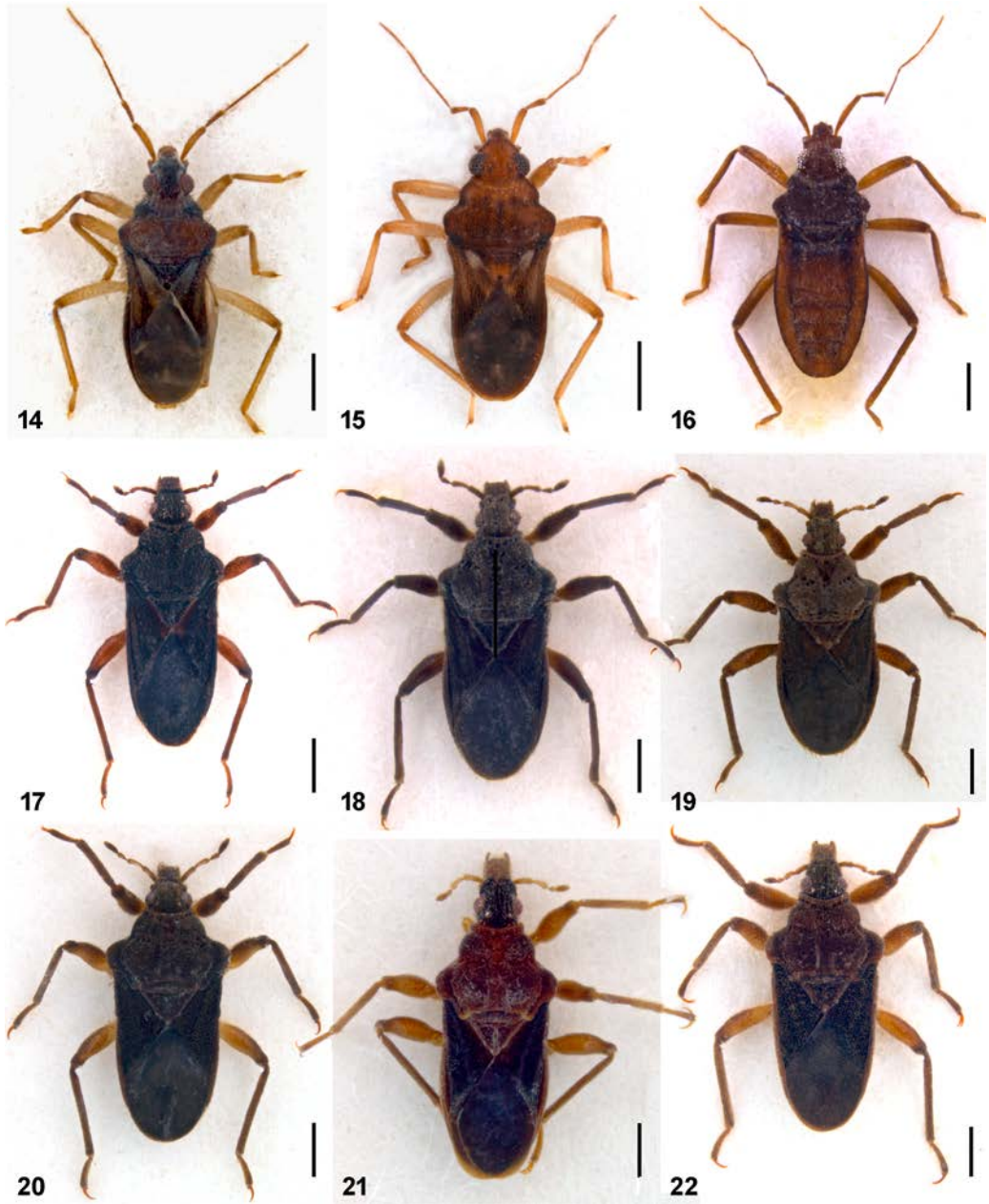
Type material. Paratype (1 female, #5411): "MALAYSIA: Tioman 0–100 m\ rd. Kampong Tekek – K.Juara\ 4.–16.3.1998, 2.48°N 104.11°E\ Dembicky & Pacholatko leg."; paratype (1 male, #5412): "01 I 1995\ Selangor Prov.\ K. Kuba Baharu", "Gumut River\ Dr. Ullrich leg.\ Dr. Wolfgang G.\ ULLRICH\ collection"; paratype (1 female, 5413): "W.Malaysia, Selangor\ Sg. Gombak tributary\ Ulu Gombak, 5-MAY-1996\ leg. HK Lua & al. LHK0303".



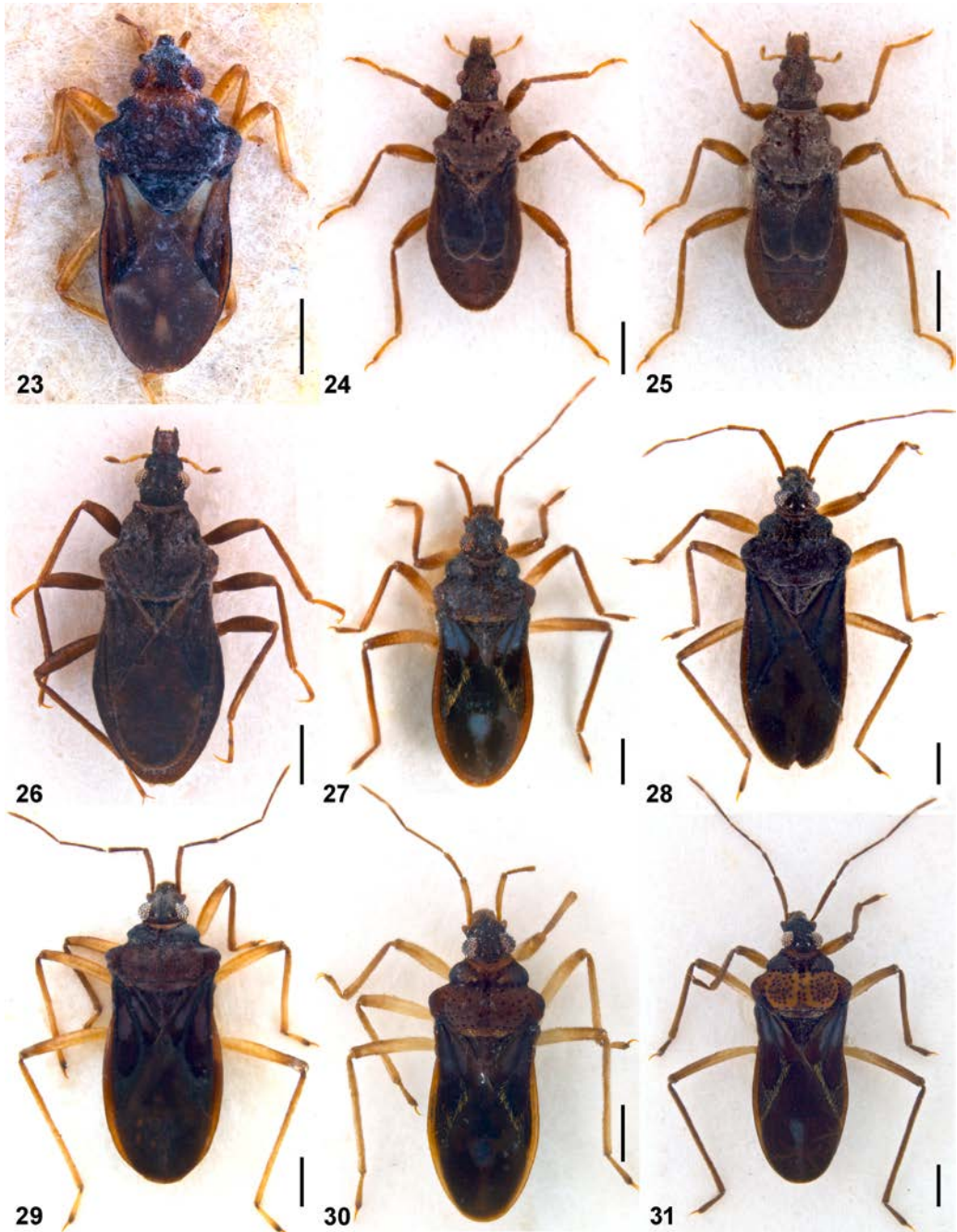
Figs 1–4. Examples for different genera of Hebridae: (1) Holotype (male, #18048; body length 2.32 mm) of *Hebrus birmensis* (from ZETTEL 2011). (2) Holotype (female, #9304; body length 2.70 mm) of *Neotimasius bruckneri* (from ZETTEL 2013). (3) Holotype (male, #31566; body length 2.66 mm) of *Timasius alveus* (from ZETTEL & PANGANTIHON 2020). (4) Paratype (brachypterous male, #22724; body length 2.42 mm) of *Nieserius subaquaticus*. All photos: Harald Bruckner.



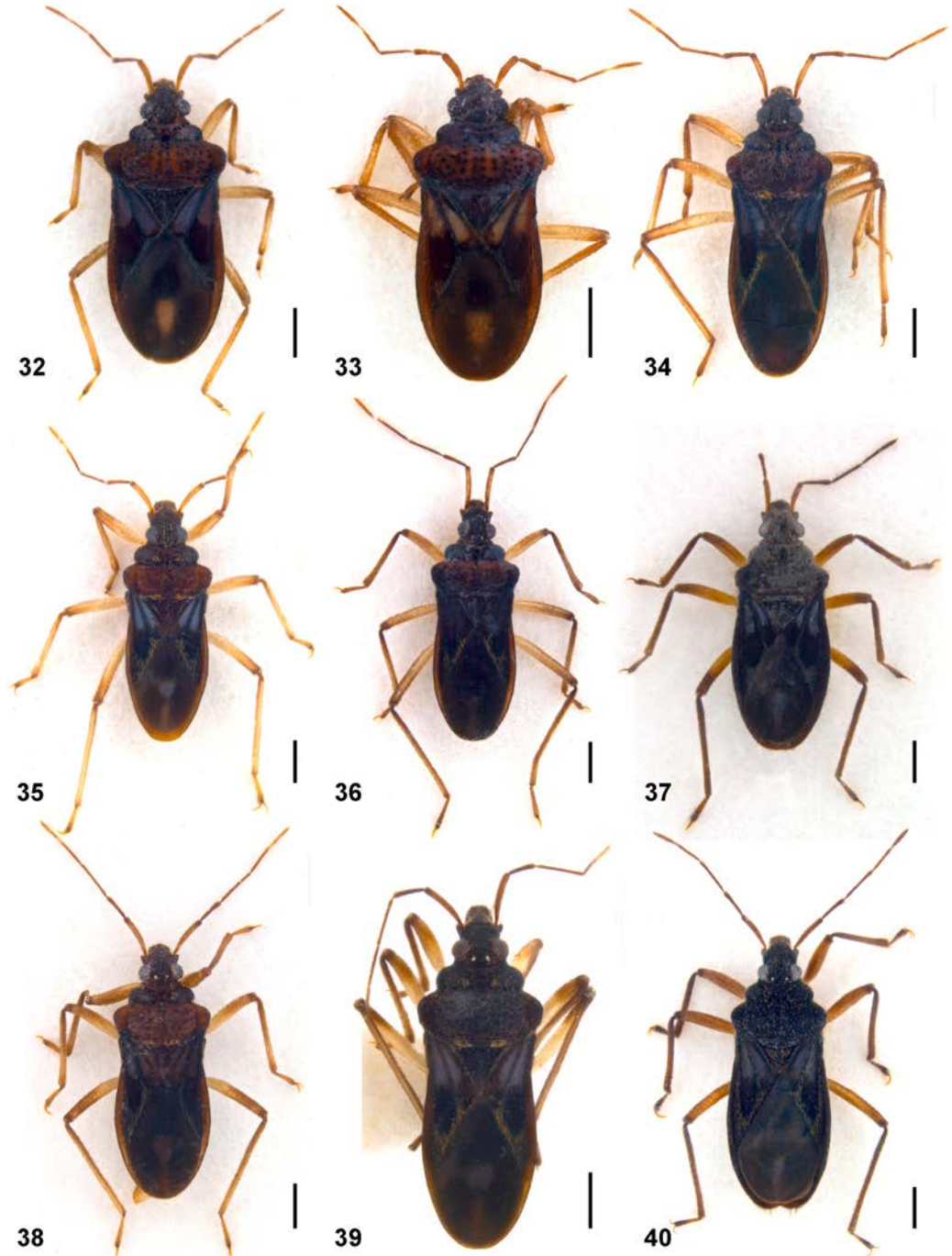
Figs 5–13. Holotypes of (5) *Hebrus bilineatus* (female, #31583); (6) *Hebrus boukali* (male, #17528); (7) *Hebrus cebuensis* (male, #17622); (8) *Hebrus fischeri* (male, #17519); (9) *Hebrus major* (male, #31582); (10) *Hebrus nasus* (male, #17536); (11) *Hebrus palawanensis* (brachypterous male, #17687); (12) *Hebrus parameralis* (male, #17558); (13) *Hebrus pictipennis* (male, #17674). All scales: 0.5 mm. Photos: 5, 9: Isabelle Cordeiro. 6–8, 10–13: Katharina Zenz.



Figs 14–22. Holotypes of (14) *Hebrus polysetosus* (male, #17504); (15) *Hebrus pseudocruciatus* (male, #17571); (16) *Hebrus tuberculifer* (micropterous male, #17621); (17) *Hyrcanus angulatus* (male, #22794); (18) *Hyrcanus boukali* (male, #23233); (19) *Hyrcanus chenae* (male, #22895); (20) *Hyrcanus draculus* (male, #22908); (21) *Hyrcanus reichli* (male, #22990); (22) *Hyrcanus shepardii* (male, #22997). All scales: 0.5 mm. All photos: Katharina Zenz.



Figs 23–31. (23) Syntype of *Merragata brevis* (female, #31581). Holotypes of (24) *Nieserius brachypterus* (brachypterous male, #22783); (25) *N. subaquaticus* (brachypterous male, #22714); (26) *N. tenuipes* (female, #22786); (27) *Timasius anderseni* (female, #5314); (28) *T. bhutanensis* (male, #5707); (29) *T. cornutus* (male, #5726); (30) *T. gracilis* (male, #5322); (31) *T. indicus* (male, #5325). All scales: 0.5 mm. All photos: Katharina Zenz.



Figs 32–40. Holotypes of (32) *Timasius jaechi* (male, #5451); (33) *T. kodadai* (male, #5691); (34) *T. laoticus* (male, #5329); (35) *T. malayensis* (male, #5337); (36) *T. montanus* (male, #5402); (37) *T. penicillatus* (male, #5730); (38) *T. schuhi* (male, #5345); (39) *T. schwendingeri* (male, #5410); (40) *T. wangi* (male, #5718). All scales: 0.5 mm. All photos: Katharina Zenz.

Acknowledgements

The Natural History Museum Vienna is grateful to all persons who enriched the Hebridae collection of NHMW by donations or exchange of type specimens: Nils Møller Andersen†, David Boukal, Luboš Dembický, David Dudgeon, Zack Falin, Michael Graindl, Manfred A. Jäch, Eduard Jendek, Zbyněk Kejval, Petr Kment, Jan Kodada, Lua Hua Kha, Hasko Nesemann, Petr Pacholátko, Clister V. Pangantihon, Otto Šauša, Harald Schillhammer, Heinrich Schönmann†, Rudolf Schuh, Peter Schwendinger, Franz Seyfert, Deep Narayan Shah, P. Sharma, S. Sharma, William D. Shepard, Ram Devi Tachamo, Tran Anh Duc, Wolfgang G. Ullrich, Vászárhelyi Tamás, Liang-Jong Wang, and Yang Chang Man. Isabelle Cordeiro kindly gave us permission to use her photos (Figs 5, 9). We thank Helena Shaverdo (NHMW) for transcription of original Cyrillic label data. Zack Falin (SEMS) kindly informed us about the type locality of *Hebrus piercei*. We cordially thank two reviewers, Petr Kment and Tran Anh Duc, for valuable comments.

References

- ANDERSEN N.M., 1981: Semiaquatic bugs: phylogeny and classification of the Hebridae (Heteroptera: Gerromorpha) with revisions of *Timasius*, *Neotimasius* and *Hyrceanus*. – Systematic Entomology 6: 377–412.
- ANDERSEN N.M., 1995: Infraorder Gerromorpha POPOV, 1971 – semiaquatic bugs. Pp. 77–114. – In: AUKEMA B. & RIEGER C. (eds): Catalogue of the Heteroptera of the Palaearctic Region. Vol. 1. – The Netherlands Entomological Society, Amsterdam, XXVI + 222 pp.
- CHAMPION G.C., 1898 [1897–1901]: Insecta: Rhynchota (Hemiptera – Heteroptera) 2. – In: GODMAN F.D. & SALVIN O. (eds): Biologia Centrali-Americana (Zoologia), XVI + 416 pp. (pp. 33–192 published in 1898).
- HORVÁTH G., 1929: Species novae Hebridarum (Hem. Het.) in Museo Nationali Hungarico asservata. – Annales Historico-Naturales Musei Nationalis Hungarici 26: 313–317.
- KANYUKOVA E.V., 1997: Hebridae of Russia and adjacent countries (Heteroptera). – Zoosystematica Rossica 6: 223–236.
- KMENT P. & CARAPEZZA A., 2022: Heteroptera (Hemiptera) of the Socotra Archipelago I: Introduction, Nepomorpha, Gerromorpha and Leptopodomorpha. – Acta entomologica musei nationalis Pragae 62 (2): 475–519.
- KMENT P., JINDRA ZD. & BERCHI G.M., 2016: Review of West-Palaearctic Hebridae with description of a new species and redescription of *Hebrus fulvinervis* (Hemiptera: Heteroptera). – Zootaxa 4147 (3): 201–239.
- KOLENATI F.A., 1857: Meletemata Entomologica. Fasc. VI. Hemipterorum Heteropterorum Caucasi. Harpagocorisidae, monographice dispositae. – Bulletin de la Société Impériale des Naturalistes de Moscou 29 [1856]: 419–491 + pl. III.
- LINNAVOURI R., 1971: Hemiptera of the Sudan, with remarks on some species of the adjacent countries. 1. The aquatic and subaquatic families. – Annales Zoologici Fennici 8: 340–366.
- LINNAVOURI R., 1980: Hemiptera of the Sudan, with remarks on the species of adjacent countries. 8. Additions and corrections. Bibliography. – Acta Entomologica Fennica 36: 1–53.
- POLHEMUS J.T. & CHAPMAN H.C., 1970: Some notes concerning American Hebridae, with the descriptions of a new species and subspecies (Hemiptera). – Proceedings of the Entomological Society of Washington 72 (1): 51–54.
- POLHEMUS J.T. & POLHEMUS D.A., 2008: Global diversity of true bugs (Heteroptera; Insecta) in freshwater. – Hydrobiologia 595: 379–391.
- PORTER T.W., 1952a: Three new species of Hebridae (Hemiptera) from the Western Hemisphere. – Journal of the Kansas Entomological Society 25 (1): 9–12.
- PORTER T.W., 1952b: A new species of Hebridae (Hemiptera) from the southwest. – Journal of the Kansas Entomological Society 25 (4): 147–149.

- RABITSCH W., 2000: Katalog der wissenschaftlichen Sammlungen der Naturhistorischen Museums in Wien, Band 15, Entomologie, Heft 7. Type specimens of Phymatidae in the Natural History Museum Vienna (Insecta: Heteroptera). – Verlag des Naturhistorischen Museums Wien, Vienna, 21 pp.
- SEHNAL C., 2000: Kataloge der wissenschaftlichen Sammlungen des Naturhistorischen Museums in Wien, Band 14, Entomologie, Heft 6. Typenkatalog der Reduviidae des Naturhistorischen Museums in Wien (Insecta: Heteroptera). – Verlag des Naturhistorischen Museums Wien, Vienna, 126 pp.
- ZETTEL H., 1998a: Eine taxonomische Revision der Gattung *Hyrcanus* DISTANT 1910 (Heteroptera: Hebridae) mit Neubeschreibungen von vier Arten aus Indien, Thailand, Laos und China. – Stapfia 55: 585–606.
- ZETTEL H., 1998b: A remarkable new *Timasius* DISTANT 1909 (Heteroptera: Hebridae) from Taiwan. – Linzer biologische Beiträge 30 (2): 601–604.
- ZETTEL H., 1999: *Nieserius* gen.n., a new genus of the subfamily Hyrcaninae (Heteroptera: Hebridae) from Thailand, Laos, and Nepal, with the first known subaquatic species of Gerromorpha. – Aquatic Insects 21(1): 39–52.
- ZETTEL H., 2000: Neue und wenig bekannte Hebridae (Insecta: Heteroptera) aus Süd-Indien, mit Neubeschreibungen von sechs Arten aus den Gattungen *Hyrcanus* DISTANT, 1910, *Timasius* DISTANT, 1909 und *Hebrus* CURTIS, 1833. – Annalen des Naturhistorischen Museums in Wien, series B, 102: 97–110.
- ZETTEL H., 2003: *Hebrus longipilosus* sp. n. (Heteroptera: Hebridae) aus Indien. – Annales historico-naturales Musei nationalis hungarici 94 (2002): 105–108.
- ZETTEL H., 2004a: Neue Arten der Gattung *Hebrus* CURTIS 1833 (Heteroptera: Hebridae) aus Südostasien. – Linzer biologische Beiträge 36 (1): 533–558.
- ZETTEL H., 2004b: *Hebrus murphyi*, new species (Heteroptera: Hebridae) from an intertidal mangrove habitat in Burias Island, Philippines. – The Raffles Bulletin of Zoology 52 (1): 75–77.
- ZETTEL H., 2004c: Revision of the *Timasius chinai* species group (Insecta: Heteroptera: Hebridae), with descriptions of ten new species. – Insect Systematics & Evolution 35 (3): 241–260.
- ZETTEL H., 2006: Neue Arten der Gattung *Hebrus* CURTIS 1833 (Heteroptera: Hebridae) aus Südostasien – 2. Teil. – Linzer biologische Beiträge 38 (1): 1009–1040.
- ZETTEL H., 2007: Eine neue Art der Gattung *Timasius* DISTANT, 1909 (Insecta: Heteroptera: Hebridae) aus Bhutan. – Annalen des Naturhistorischen Museums in Wien, series B [2006]: 83–87.
- ZETTEL H., 2011: A contribution to the knowledge of Gerromorpha (Insecta: Hemiptera) of Myanmar, with seven new species, eight new records, and a catalogue. – Annalen des Naturhistorischen Museums in Wien, series B, 112: 89–114.
- ZETTEL H., 2012: The genus *Timasius* DISTANT, 1909 (Hemiptera: Heteroptera: Hebridae) in Nepal: three new species and notes on the brachypterous morph. In: HARTMANN M. & WEIPERT J. (eds): Biodiversität und Naturlandschaft im Himalaya IV. – Naturkundemuseum Erfurt, Erfurt, pp. 179–186.
- ZETTEL H., 2013: Two new Hebridae (Insecta: Hemiptera: Heteroptera) from Madhya Pradesh, India, with a discussion on *Neotimasius*. – Annalen des Naturhistorischen Museums in Wien, series B, 115: 27–36.
- ZETTEL H., 2022: On the identity and distribution of *Hebrus nipponicus* HORVÁTH, 1929 (Hemiptera: Hebridae), with a note on the publication date of *Hebrus* CURTIS. – Linzer biologische Beiträge 54 (1): 341–349.

- ZETTEL H., BRUCKNER H. & LACINY A., 2022: Confirmed identity of *Hebrus montanus* KOLENATI, 1857 (Hemiptera: Hebridae) based on types. – Far Eastern Entomologist 457: 7–12.
- ZETTEL H. & CHEN P.P., 2000: The genus *Timasius* DISTANT 1909 (Heteroptera: Hebridae) in Borneo, with description of two new species. – Linzer biologische Beiträge 32 (2): 1195–1201.
- ZETTEL H. & PANGANTIHON C.V., 2020: A new species of the *Timasius livens* species group (Hemiptera: Heteroptera: Hebridae) from Cambodia and Vietnam. – Far Eastern Entomologist 405: 8–14.
- ZETTEL H. & TRAN A.D., 2016: First notes on *Hebrus* (Insecta: Heteroptera: Hebridae) in Vietnam. Annalen des Naturhistorischen Museums in Wien, series B, 118: 55–59.

ZOBODAT - www.zobodat.at

Zoologisch-Botanische Datenbank/Zoological-Botanical Database

Digitale Literatur/Digital Literature

Zeitschrift/Journal: [Annalen des Naturhistorischen Museums in Wien](#)

Jahr/Year: 2023

Band/Volume: [125B](#)

Autor(en)/Author(s): Zettel Herbert, Bruckner Harald, Laciny Alice, Zenz Katharina

Artikel/Article: [Catalogue of the type specimens of the family Hebridae \(Insecta: Hemiptera: Heteroptera\) in the Natural History Museum Vienna 13-36](#)