

A new species closely related to *Lethe goalpara* (MOORE, [1866]) from W. Yunnan, S.W. China

(Lepidoptera, Nymphalidae, Satyrinae)

by

SONG-YUN LANG

received 16.XI.2023

Abstract: In this paper, a new species, *Lethe yilangi* spec. nov., is described from the upper Mekong (Lancang) valley in Changning, W. Yunnan, S.W. China.

Lethe goalpara (MOORE, [1866]) (Satyrini: Lethina) is an oriental species known from S.W. China (S.E. Tibet, W. Yunnan), N. India, Nepal and N. Vietnam (TALBOT, 1949; MONASTYRSKII, 2005; LANG, 2017). In another paper of this issue, HUANG (2023) found that the former *L. goalpara* (MOORE) is a species complex including 3 species and 1 subspecies: *L. goalpara* (MOORE) (= *narkunda* FRUHSTORFER, 1911) from N.W. India and Nepal, *L. goalpara kabruensis* TYTLER, 1939 from N.E. India and W. Yunnan, *L. huangsiyaoi* HUANG, 2023 from N.W. Yunnan, and *L. gana* TALBOT, [1949] from Sikkim, S.E. Tibet and N.W. Yunnan. In this paper, an additional new species of the *Lethe goalpara* (MOORE)-complex is described from Mekong (Lancang) valley in Changning, W. Yunnan. Materials in this study are kept in Chongqing Museum of Natural History, Beibei, CHINA (CMNH) and Dr. SONG-YUN LANG's private collection, Beibei, CHINA (LSY). Terminology follows that of HUANG (2023).

Lethe yilangi LANG spec. nov. (figs: 1-2, 5, 8a, 9a, 12)

Holotype ♂: CHINA, Yunnan, Changning, 2650 m, 9.IX.2023, leg. YI LANG, SATY1234, ANDR0318 (CMNH).

Diagnosis: The new species can be distinguished from all known species in the *Lethe goalpara* (MOORE)-complex by the combination of the following characters: 1) It is similar in appearance to *L. goalpara kabruensis* TYTLER from nearby region, but is somewhat smaller than the latter; 2) on the forewing underside, the distal third of the cell is stained by dark colours, whereas it is clean and pale in *L. gana* TALBOT; 3) apical spines of androconium are somewhat longer than other species; 4) ♂ uncus is thinner as in *L. gana* TALBOT, whereas it is swelled dorsally in *L. goalpara kabruensis* TYTLER and *L. huangsiyaoi* HUANG; 5) ♂ uncus is obviously shorter than that of *L. gana* TALBOT.

Etymology: The specific name *yilangi* is named after Mr. YI LANG, who is father of the present author and collected the holotype.

Distribution: S.W. China (upper Mekong valley, W. Yunnan).

Notes: Basing upon morphology of the ♂ uncus, the *Lethe goalpara* (MOORE)-complex has two basic types, Type I (uncus swelled) including *L. goalpara* (MOORE) and *L. huangsiyaoi* HUANG, and Type II (uncus thin) including *L. gana* TALBOT and *L. yilangi* spec. nov. *Lethe gana* TALBOT and *L. huangsiyaoi* HUANG fly together in the Nujiang (upper Salween) valley, Gongshan, N.W. Yunnan (HUANG, 2023), it is the only sympatric record of the two types. In each type, sympatry of different species is unknown and unlikely. In W. Yunnan, *Lethe goalpara kabruensis* TYTLER is only known from the Irrawaddy Valley (Pianma and Nabang), but has not been collected from the Salween (Nujiang) valley. Meanwhile, *L. yilangi* spec. nov. was collected from the Mekong (Lancang) valley. MONASTYRSKII (2005) recorded *Lethe goalpara* (MOORE) from Mts. Hoang Lien, N. Vietnam (lacking information of ♂ genitalia and androconia, its true status in the species group can hardly be determined).

Acknowledgements: The present author thanks Mr. HAO HUANG (Qingdao), Mr. SI-YAO HUANG (Bonn), Mr. YI LANG (Shuangliu) and Ms. JIANG HOU (Beibei) for their various helps.

References

- HUANG, H. (2023): New or little known butterflies from China - 6 (Lepidoptera: Nymphalidae, Lycaenidae et Hesperidae). - *Atalanta* 54 (3/4): 308-335, Marktleuthen.
- LANG, S. Y. (2017): The Nymphalidae of China (Lepidoptera, Rhopalocera). Part II. Satyrinae (partim): Tribe Satyrini (partim): Subtribes Eritina, Ragadiina, Lethina, Parargina. - Tshikolovets Publications, Pardubice.
- MONASTYRSKII, A. L. (2005): Butterflies of Vietnam, Volume 1, Nymphalidae: Satyrinae. - Galaxy Studio, Hanoi.
- TALBOT, G. (1949): The Fauna of British India, Ceylon and Burma, Butterflies 2. - Taylor & Francis, Ltd., London.

Address of the author

SONG-YUN LANG
Chongqing Museum of Natural History
400700, Beibei, China
Email: langsongyun@gmail.com

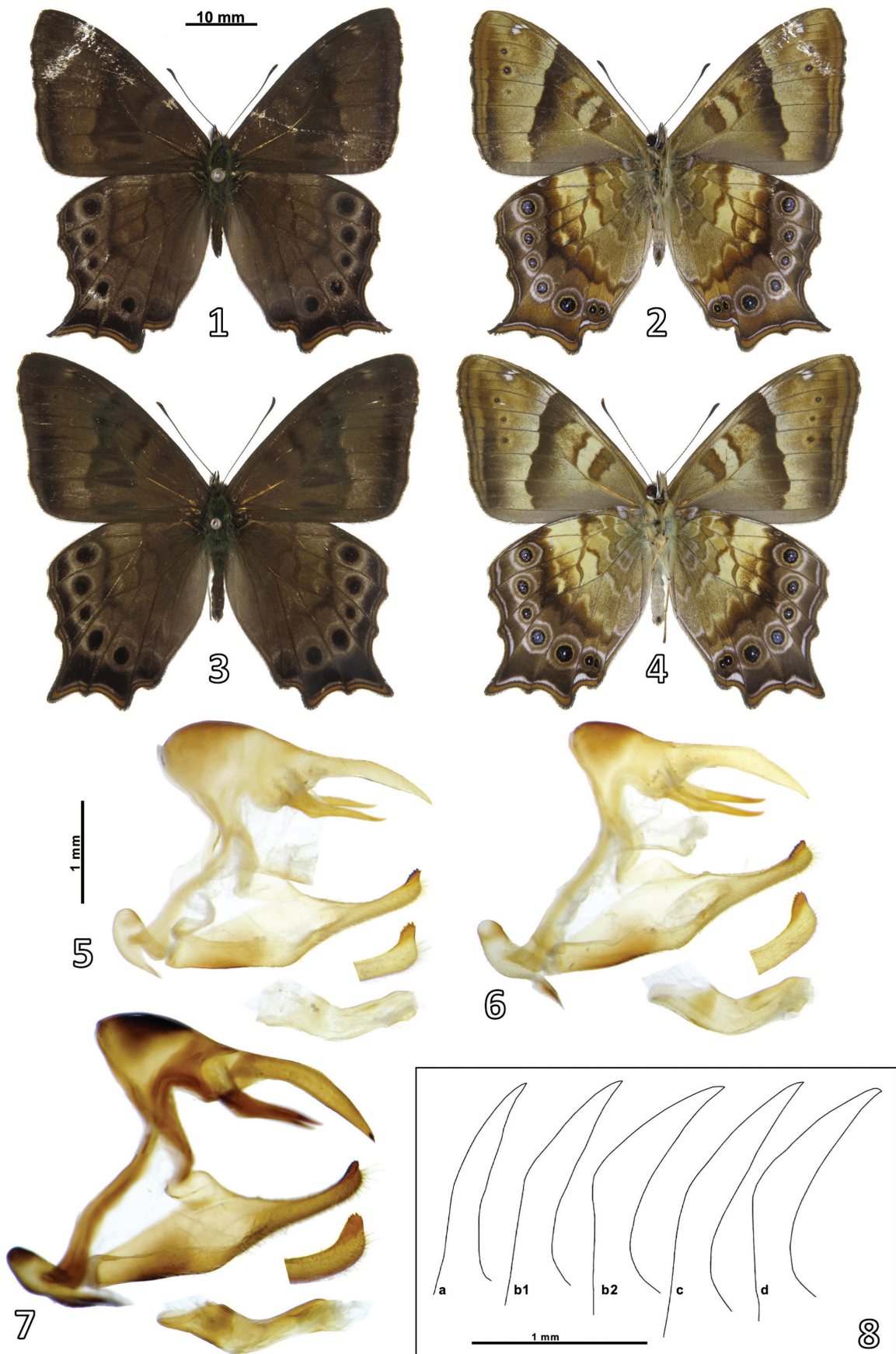


Fig. 1-2: *Lethe yilangi* spec. nov., holotype ♂, Yunnan, Changning, S1234, A0318, CMNH. **Fig. 3-4:** *Lethe goalpara kabruensis* TYTLER, 1939, ♂, Yunnan, Pianma, S1233, A0317, LSY. **Fig. 5-7:** ♂ genitalia. (5) *Lethe yilangi* spec. nov., holotype, Yunnan, Changning, S1234, CMNH; (6) *Lethe goalpara kabruensis* TYTLER, 1939, Yunnan, Pianma, S1233, LSY; (7) *Lethe gana* TALBOT, [1949], Tibet, Medog, S0504, LSY. **Fig. 8:** ♂ uncus. **a.** *Lethe yilangi* spec. nov., holotype, Yunnan, Changning, S1234, CMNH. **b.** *Lethe goalpara kabruensis* TYTLER, 1939: (b1) Yunnan, Pianma, S1233, LSY; (b2) Yunnan, Nabang, traced from HUANG (2003: fig. k1). **c.** *Lethe gana* TALBOT, [1949], Tibet, Medog, S0504, LSY. **d.** *Lethe huangsiyaoi* HUANG, 2023, Yunnan, Gongshan, traced from HUANG (2003: fig. h1).

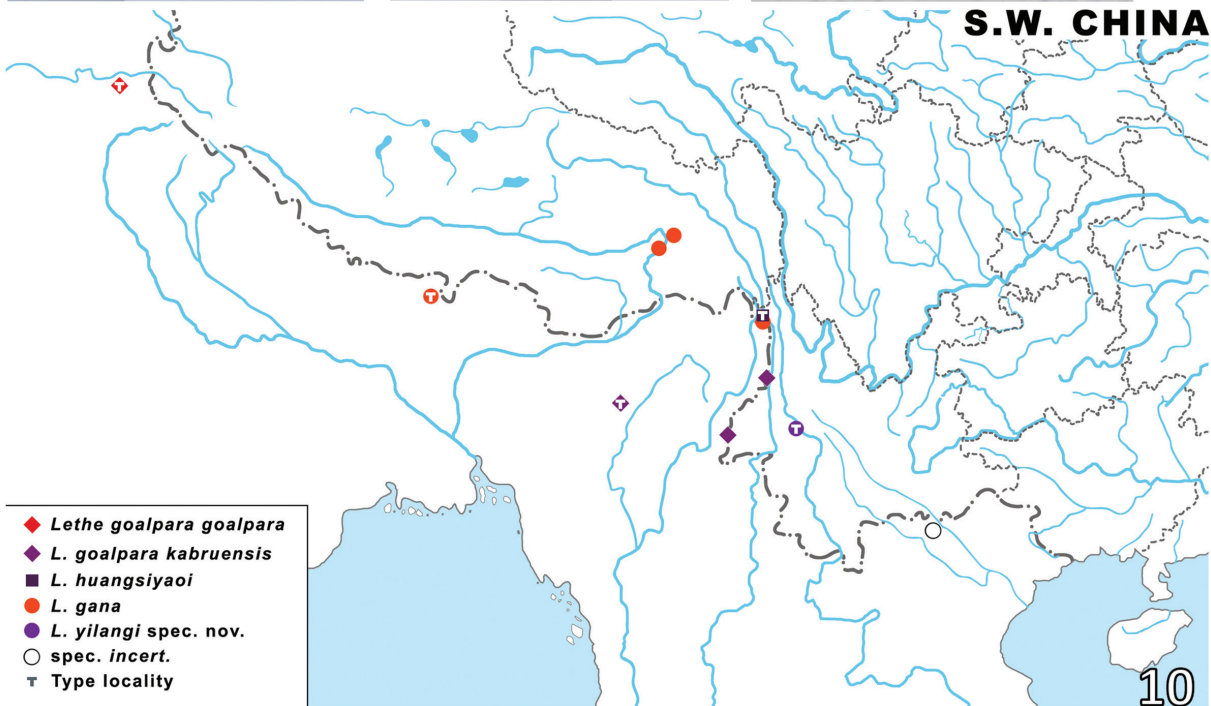
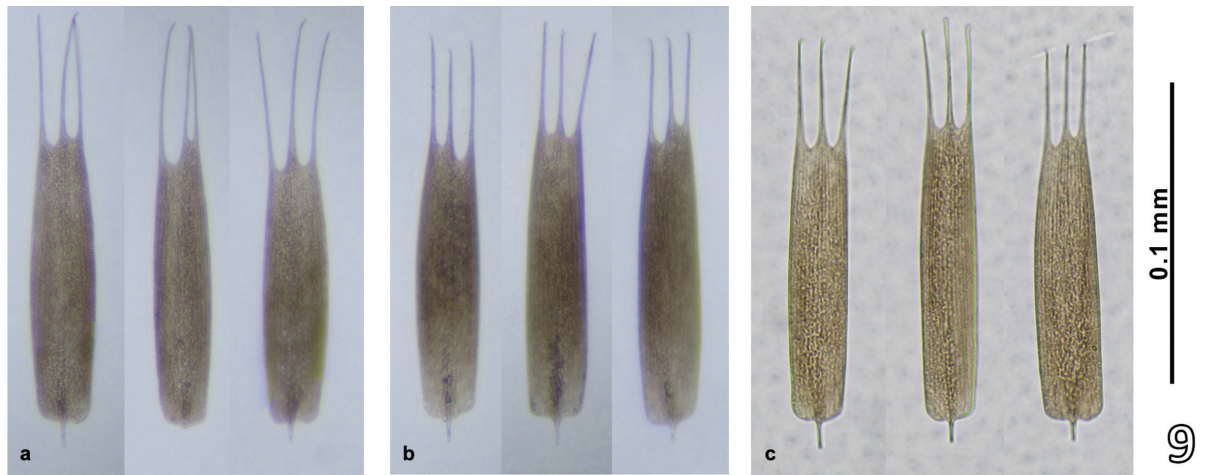


Fig. 9: Androconia. **a.** *Lethe yilangi* *spec. nov.*, holotype, Yunnan, Changning, A0318, CMNH; **b.** *Lethe goalpara kabruensis* 1YTLER, 1939, Yunnan, Pianma, A0317, LSY; **c.** *Lethe gana* TALBOT, [1949], Tibet, Medog, A0080, LSY. **Fig. 10:** Distribution map of the *Lethe goalpara* (MOORE, [1866])-complex (Sources of data: TALBOT, 1949; MONASTYRSKII, 2005; LANG, 2017; HUANG, 2023; specimens kept in LSY, CMNH). **Fig. 11:** The habitat of *Lethe yilangi* *spec. nov.*, 2650 m, on the right bank of the upper Mekong (Lancang River), Changning, Yunnan (8.IX.2023). **Fig. 12:** The holotype ♂ of *Lethe yilangi* *spec. nov.* in net (9.IX.2023).

ZOBODAT - www.zobodat.at

Zoologisch-Botanische Datenbank/Zoological-Botanical Database

Digitale Literatur/Digital Literature

Zeitschrift/Journal: [Atalanta](#)

Jahr/Year: 2023

Band/Volume: [54_3-4](#)

Autor(en)/Author(s): Lang Song-Yun

Artikel/Article: [A new species closely related to *Lethe goalpara* \(Moore, \[1866\]\) from W. Yunnan, S.W. China \(Lepidoptera, Nymphalidae, Satyrinae\) 385-387](#)