

BRAUERIA (Lunz am See, Austria) 26: 24 (1999)

**The female of *Potamophylax jungi* MEY, 1976
(Trichoptera, Limnephilidae)**

Lujza UJVÁROSI & Sára NÓGRÁDI

Abstract. The female of *Potamophylax jungi* is described and figured. Recent distribution data of the species are given from the Eastern Carpathians, Romania.

Very few specimens have been known of this recently described species (MEY 1976, 1978) from Şelimbăr (24°20'E, 45°45'N, Sibiu county) and Ciucea environs: Valea Drăganului (22°50'E, 46°55'N, Cluj county, Munţii Bihorului), Western Romania. The female could not be identified earlier. During the past years one of the authors collected some adults, and, in addition to males, females belonging to this species were also taken.

The female of *Potamophylax jungi* resembles that of *Potamophylax rotundipennis*, but it is different in some minute details, which are clearly distinguishable (Fig. 1).

Potamophylax jungi MEY, 1976 was recently collected in five sites: Eghersec, Ciuc Mountains, Uz brook (26°05'E, 46°20'N, Harghita county), Aug. 7, 1997, 2 ♂♂ 1 ♀; Aug. 29, 1997, 1 ♂ – Racu, Ciuc Depression, Silaş brook (26°45'E, 46°10'N, Harghita county), Aug. 28, 1997, 3 ♂♂ 2 ♀♀. – Voşlăbeni, Gheorghieni Depression, Senetea moor (25°35'E, 46°35'N, Harghita county), Aug. 3, 1998, 4 ♀♀ – Şugaş spa, near Sfântu Gheorghe (25°40'E, 45°50'N, Covasna county), Aug. 13, 1998, 1 ♂ – Iacobenii, Caşin Depression, Caşin brook (26°05'E, 46°10'N, Sibiu county), Aug. 16, 1998, 1 ♂. All specimens were collected by Tamás & Lujza Ujvárosi.

References

- MEY, W. 1976. *Potamophylax jungi* n. sp. – eine neue Limnephilidae aus Rumänien (Trichoptera). – Ent. Nachr. 20 (11): 166–168.
MEY, W. 1978. Beitrag zur Trichoptera-Fauna Rumäniens I. – Ent. Nachr., 22 (1): 7–22.

Author's addresses:

Lujza Ujvárosi
University Babeş-Bolyai
Department of Zoology
Clinicilor 5-7
RO - 3400 Cluj
Romania

Dr. Sára Nógrádi
Janus Pannonius Museum
Natural History Department
P. O. Box 347
H - 7601 Pécs
Hungary

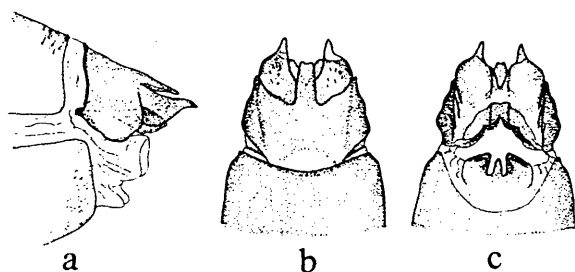


Fig. 1. The apex of the abdomen of female *Potamophylax jungi* MEY, 1976: lateral (a), dorsal (b) and ventral (c).

*

Trichoptera World Checklist

Trichoptera Colleagues:

Finally, after more than 7 years of data acquisition, editing, and database programming, the Trichoptera Checklist Coordinating Committee, elected at the 8th International Symposium on Trichoptera and confirmed at the 9th Symposium (its members listed on the web page), is pleased to announce that the Trichoptera World Checklist is available on the World Wide Web for your use.

The URL is as follows: <http://entweb.clemson.edu/database/trichopt/>

The TWC may also be accessed through "Entomology Information" on the Home Page of the Department of Entomology, Clemson University <http://entweb.clemson.edu/>

The work was accomplished with the assistance of students Melinda McElveen, Steve Winsett, and Sven-Eric Spichiger. I am grateful for the persistence of our programmer, Susan Petracco (until recently, "Susan Daniels"), and the Clemson University Department of Entomology Technology Manager, Ken Allen. Through all of the vagaries of this protracted process, I am thankful for the patience of the Integrated Taxonomic Information System (especially Barbara Lambourne), who provided some of the financial support for the databasing effort and continuing encouragement to complete the job. The work would have been impossible without the kind tolerance of my gracious wife Suzanne during nights, weekends, and holidays for the past seven years.

As promised at the recent Symposia, I will endeavor to up-to-date the database for the indefinite future. This means that I will rely on you, the users, to alert me to errors and to provide me with published data (preferably reprints or photocopies of publications).

The word-processing version from which the database was derived is on my Macintosh computer. However, I do not plan to try to maintain both the word-processing document and the databased document in parallel.

This word-processing document occupies 2,772 K on my computer and prints to 573 pages (with just one line for each species!). I will be glad to download and print relevant sections from the checklist for those colleagues who do not yet have access to the World Wide Web. However, because of the size of the document, it will not be possible to print and ship the entire document except under unusual circumstances and with your financial assistance. Of course, since I will not be updating the word-processing version, it will soon become obsolete and unreliable.

John C. Morse
Editor, Trichoptera World Checklist
Chairman, Trichoptera Checklist Coordinating Committee

Professor of Entomology and Director of
The Clemson University Arthropod Collection (CUAC) Department of Entomology
Clemson University
Long Hall
Box 340365
Clemson, SC 29634-0365
UNITED STATES OF AMERICA
office phone = +864-656-5049
home phone = +864-646-3580
FAX = +864-656-5065
E-mail: jmorse@clemson.edu
WWW = <http://entweb.clemson.edu>
(see "Entomology Information" for searchable databases regarding the CUAC and the Trichoptera World Checklist).

To subscribe to the TRICH-L discussion group list, send the following message IN THE BODY ONLY: Subscribe CAFLS_Trich-L your name
[NOTE: do NOT provide your user name for "your name" above] to the following address:
Listserv@clemson.edu

**CHANGE OF ADDRESS:**

David Cartwright
13 Brolga Crescent
Wandana Heights
Victoria 3216
AUSTRALIA

ZOBODAT - www.zobodat.at

Zoologisch-Botanische Datenbank/Zoological-Botanical Database

Digitale Literatur/Digital Literature

Zeitschrift/Journal: [Braueria](#)

Jahr/Year: 1999

Band/Volume: [26](#)

Autor(en)/Author(s): Ujvarosi Lujza, Nogradi Sára

Artikel/Article: [The female of *Potamophylax jungi* MEY, 1976 \(Trichoptera, Limnephilidae\) 24](#)