

BRAUERIA (Lunz am See, Austria) 47:4 (2020)

Description of *Apsilochorema sinnemanorum* sp. n. from New Guinea (Trichoptera: Hydrobiosidae)

Wolfram MEY

The range of the genus *Apsilochorema* ULMER, 1907 is extending from Central and East Asia in the north to Australia in the south. The large islands between the continents are inhabited by a varying number of endemic species of the genus (MEY 1999). With 10 species New Guinea has the greatest number of endemics. Interestingly, all species were described from the Eastern part, Papua New Guinea (cf. OLÁH 2010). *A. sinnemaorum* sp. n. appears to be the first species of the genus recorded from the western part, Papua Indonesia.

***Apsilochorema sinnemanorum* sp. n.**

Material: holotype, male, Indonesia, Papua, Mokwam [Arfak Mts.], 1510 m, 21.x.2014, at light, leg. S. SINNEMA [in alcohol], deposited in Museum für Naturkunde, Berlin.

Derivatio nominis: The new species is named in honour of the Dutch entomologist S. SINNEMA. He and his wife have collected the specimen.

Diagnosis: *A. sinnemanorum* sp. n. is a member of the *A. gisbum* group and very similar to *A. unciferum* SCHMID, 1989. The new species can be separated by the architecture of the phallic apparatus and the shape of the inferior appendages, which are bearing curved harpagines larger than that of *A. unciferum*.

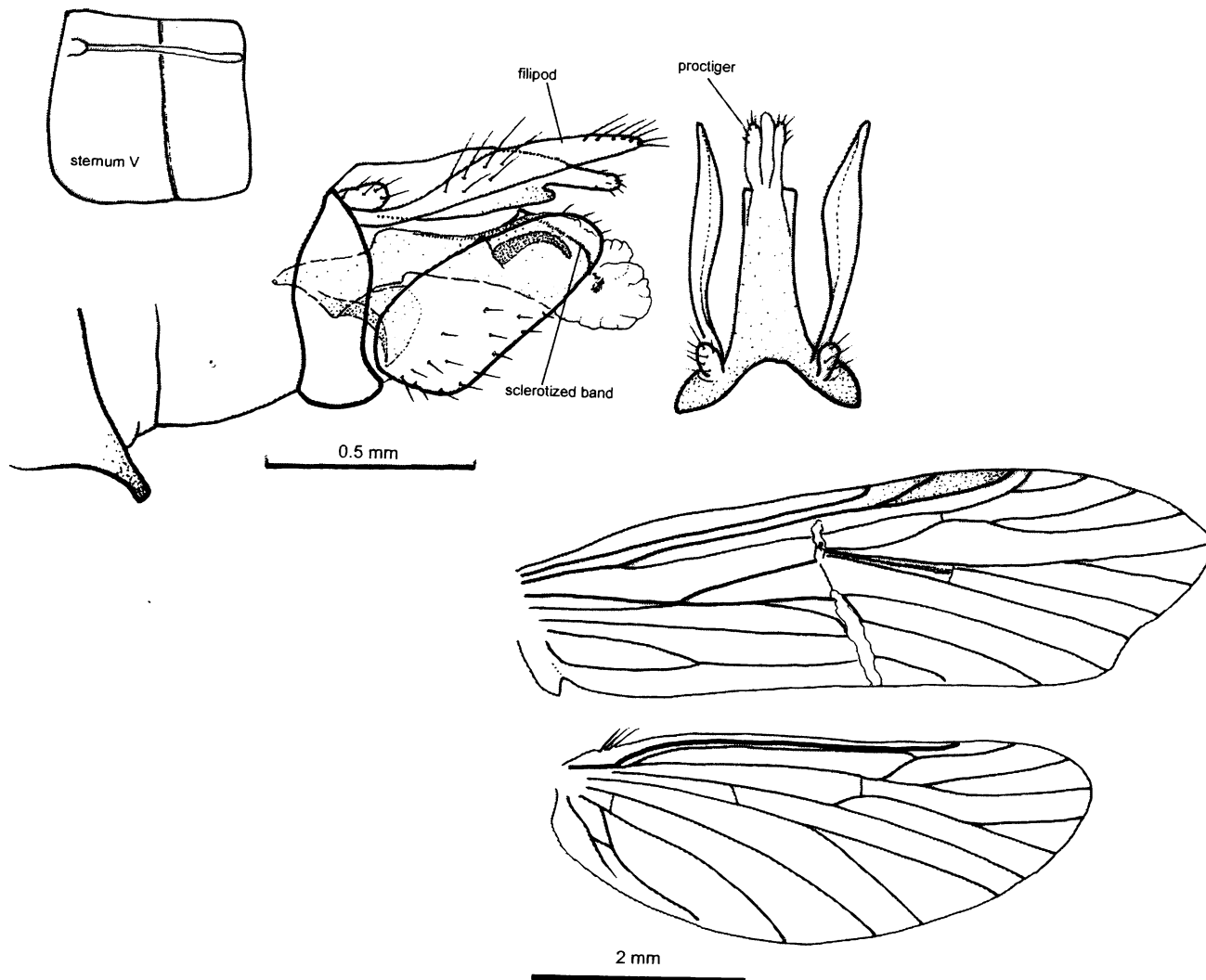
Description. Male (Figs.): length of forewing 6.1 mm; head and thorax brown; spurs 1.4.4., tarsal segments of forelegs without spines, fore-tibia with band of denticules on inner margin; wing venation as defined for the genus, but with discoidal broad and closed; sternum V with glandular filament as long as sternum V, sternum VII with short ventral process.

Male genitalia: segment IX narrow, filipods broadened in the middle and slightly longer than inferior appendages, proctiger with two, short apical lobes, harpago inserted in the distal half of the coxopodit, base of phallic apparatus excavated on dorsal side, sclerotised band with small, phallotremal sclerite.

References

MEY, W. (1999): Notes on the taxonomy and phylogeny of *Apsilochorema* ULMER, 1907 (Trichoptera, Hydrobiosidae). – Dtsch. Entomol. Z. 46 (2): 169-183.

OLÁH, J. (2012): Taxonomic list of Trichoptera described and recorded from New Guinea region. – Folia Historico Naturalia Musei Matraensis 36: 105-122.



ZOBODAT - www.zobodat.at

Zoologisch-Botanische Datenbank/Zoological-Botanical Database

Digitale Literatur/Digital Literature

Zeitschrift/Journal: [Braueria](#)

Jahr/Year: 2020

Band/Volume: [47](#)

Autor(en)/Author(s): Mey Wolfram

Artikel/Article: [Description of *Apsilochorema sinnemanorum* sp. n. from New Guinea \(Trichoptera: Hydrobiosidae\) 4](#)