

## Applied Integrated Mineralogical and SEM/EDX Analysis for the Identification and Source Apportionment of Deposited Dust in Air Quality Control

CHRISTINA TRIMBACHER<sup>\*)</sup> & HASSAN NEINAIAE<sup>\*\*)</sup>

### Introduction

Due to exceedings of the limit values for lead (Pb) and cadmium (Cd) in deposited dust, as regulated in the Austrian Air Quality Act, measurements have been carried out in an industrial region in Austria in winter 2003/2004. Analysis with integrated mineralogical and SEM/EDX techniques in five selected samples of deposited dust (Bergerhoff method) and four material samples of the locations have been performed. The main objective was to identify the sources of Cd and Pb, as there are several industrial plants settled in that region.

### Method

Polished thin- and cross sections were prepared for mineralogical analysis, using reflected and transmitted light microscopy, as well as XRFA and EDX for semi-quantitative analysis of selected particulate pollutants. By means of scanning electron microscopy (SEM) and energy-dispersive X-ray microanalysis (EDX) structure, size and elemental composition of the particles were analysed. This methodology has already been introduced in previous studies.

### Results

Pb-rich particles were identified in all five dust samples and could be related to an industrial plant in the area. (metallic Pb, Pb-Sulfate, PbO<sup>2</sup>-Chlorides, Pb-Silicates). Additionally, C-S-rich cenospheric particles (traces of Ni and V) and partly melted plastics from combustion processes could be attributed to the same source (see Fig. 1c). No Cd-rich particles could be found in the dust samples. Therefore material samples taken directly from the industrial premises were analysed. The source of cadmium could be clearly identified: 0.2 to 0.85 % Cd was found in Pb-rich particles in filter dusts (see Fig. 1a and 1b).

### References

- NEINAIAE, H., PIRKL, H. & TRIMBACHER, C. (2000): Herkunft und Charakteristik von Stäuben. – UBA-BE-171, Umweltbundesamt Wien.
- TRIMBACHER, C. & NEINAIAE, H. (2002): Studie zur Ermittlung der Herkunft von Stäuben an sechs ausgewählten Messpunkten in Graz. – UBA-BE-210, Umweltbundesamt Wien.

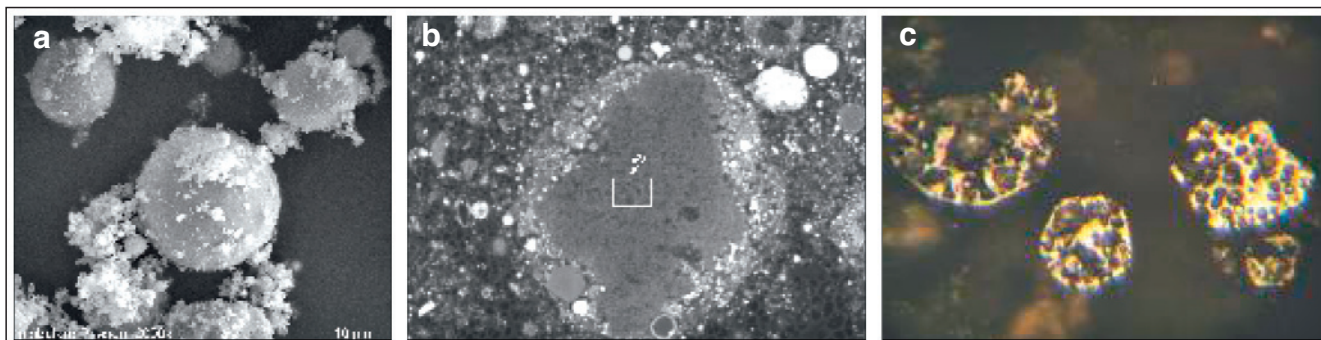


Fig. 1.

- a) SEM-micrograph of spherical Pb-Silicates of a filter dust sample (Mag: 2000×).  
 b) XRFA-micrograph of a dust filter sample showing a PbO<sub>2</sub>-Chloride particle with 1.5 % Cd.  
 c) Micrograph of a polished cross section of four C-S-rich cenospheric particles.

<sup>\*)</sup> Umweltbundesamt, Department for Inorganic Analysis, Spittelauer Lände 5, 1090 Vienna, Austria,

<sup>\*\*)</sup> Römerweg 43/Top 2, A- 6372 Oberndorf.  
 neinaiae@a1.net.

# ZOBODAT - [www.zobodat.at](http://www.zobodat.at)

Zoologisch-Botanische Datenbank/Zoological-Botanical Database

Digitale Literatur/Digital Literature

Zeitschrift/Journal: [Berichte der Geologischen Bundesanstalt](#)

Jahr/Year: 2008

Band/Volume: [77](#)

Autor(en)/Author(s): Trimbacher Christina, Neinavaie Mohammed Hassan

Artikel/Article: [Applied Integrated Mineralogical and SEM/EDX Analysis for the Identification and Source Apportionment of Deposited Dust in Air Quality Control 73](#)