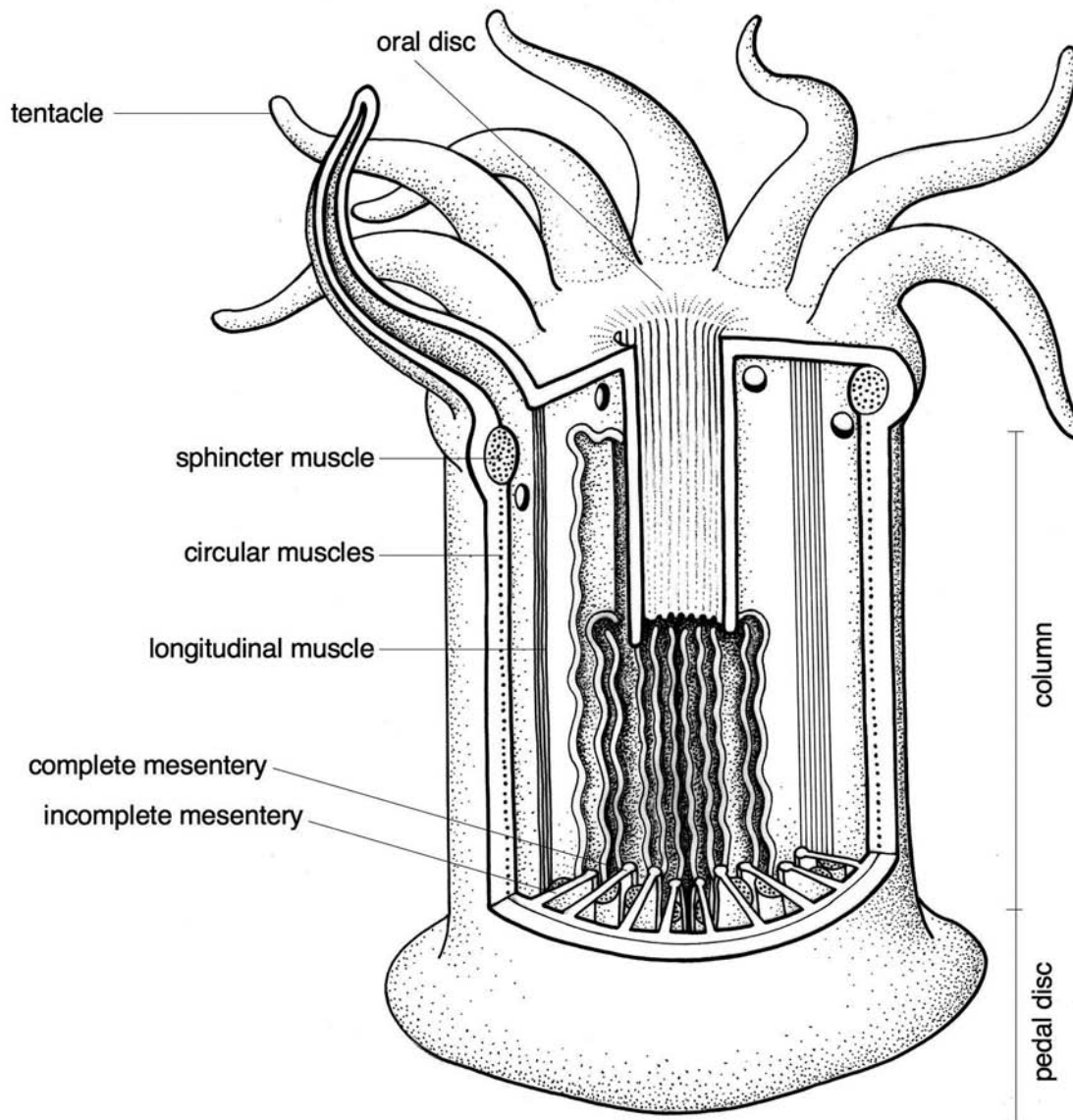
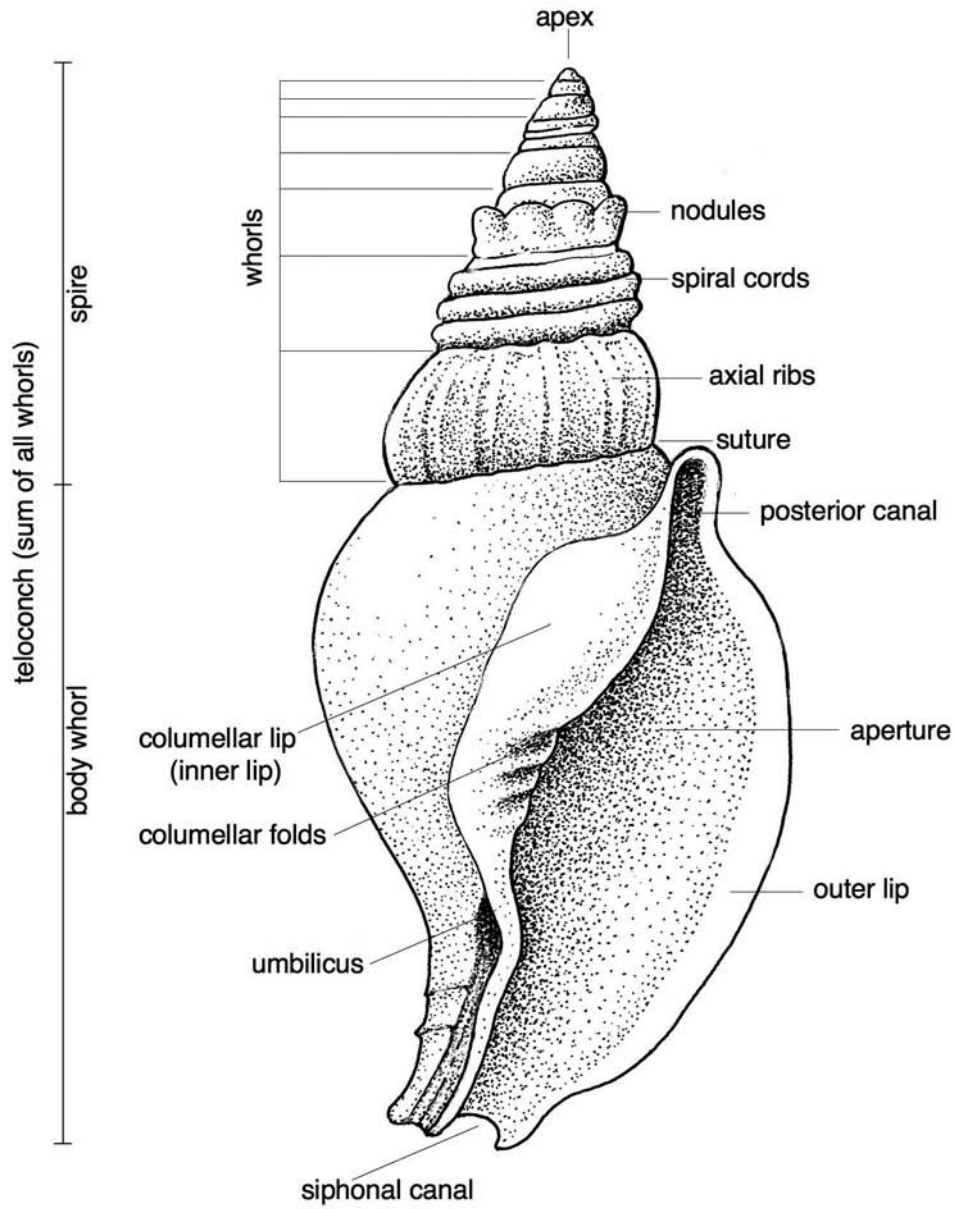


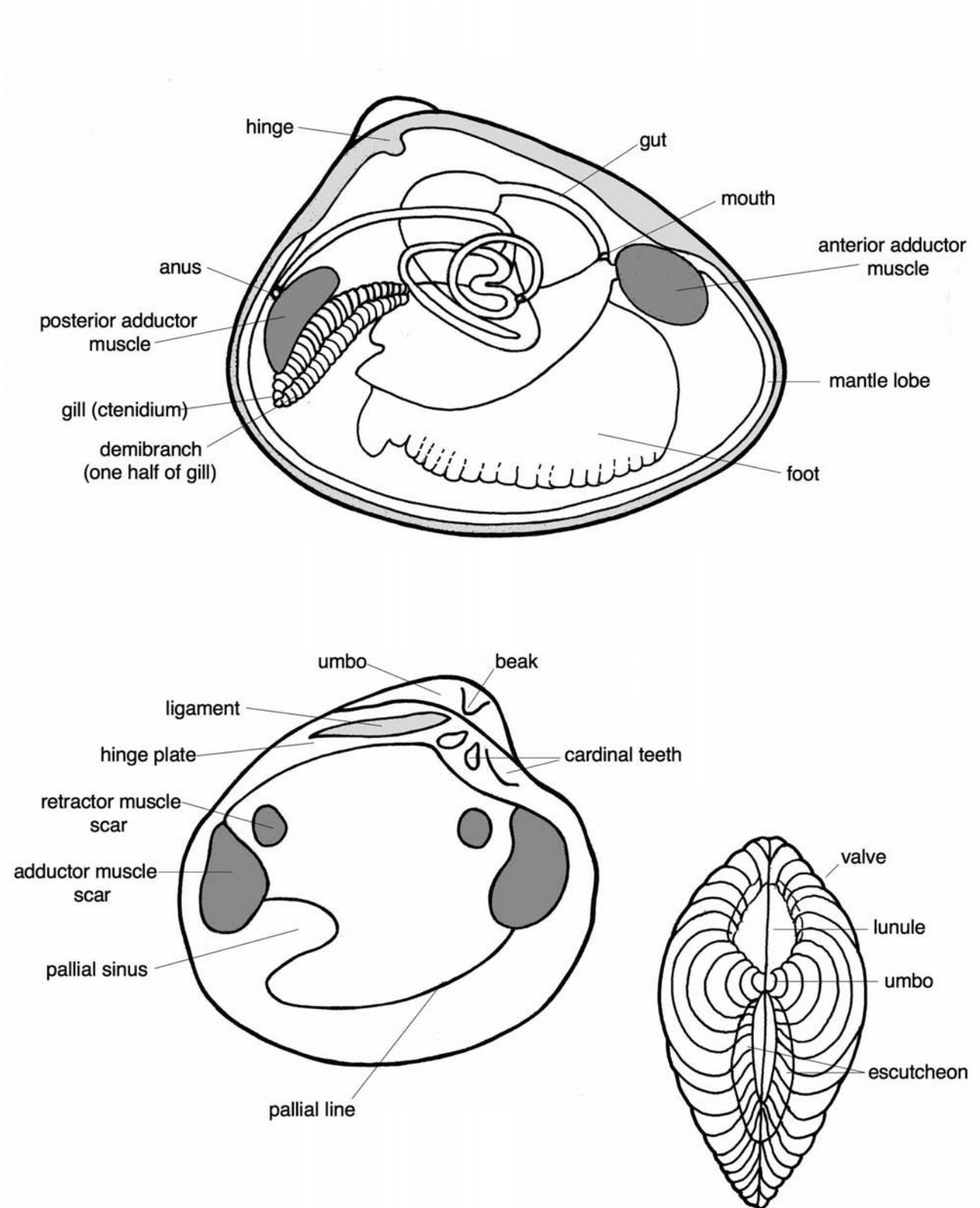
Cnidaria, Anthozoa



Mollusca, Gastropoda

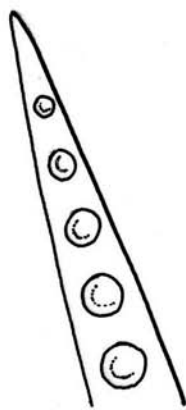
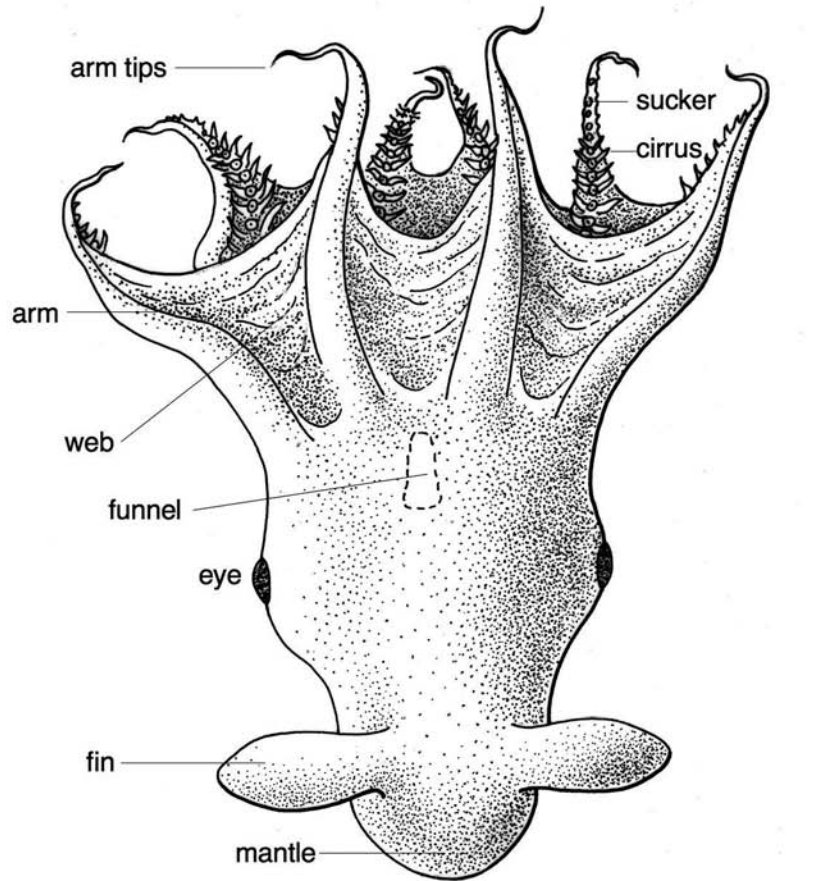


Mollusca, Bivalvia

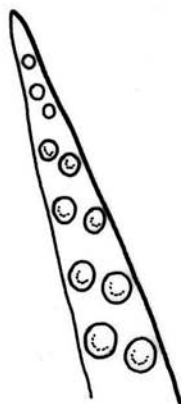


Mollusca, Cephalopoda

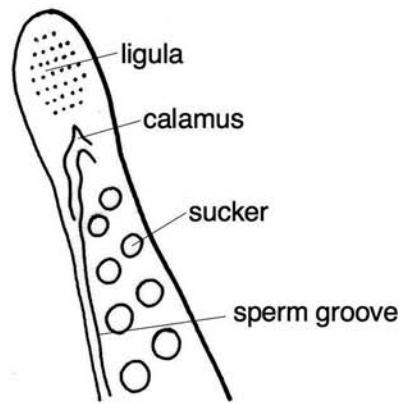
Vampyroteuthis (Order Vampyromorpha)*



arm with single row of suckers

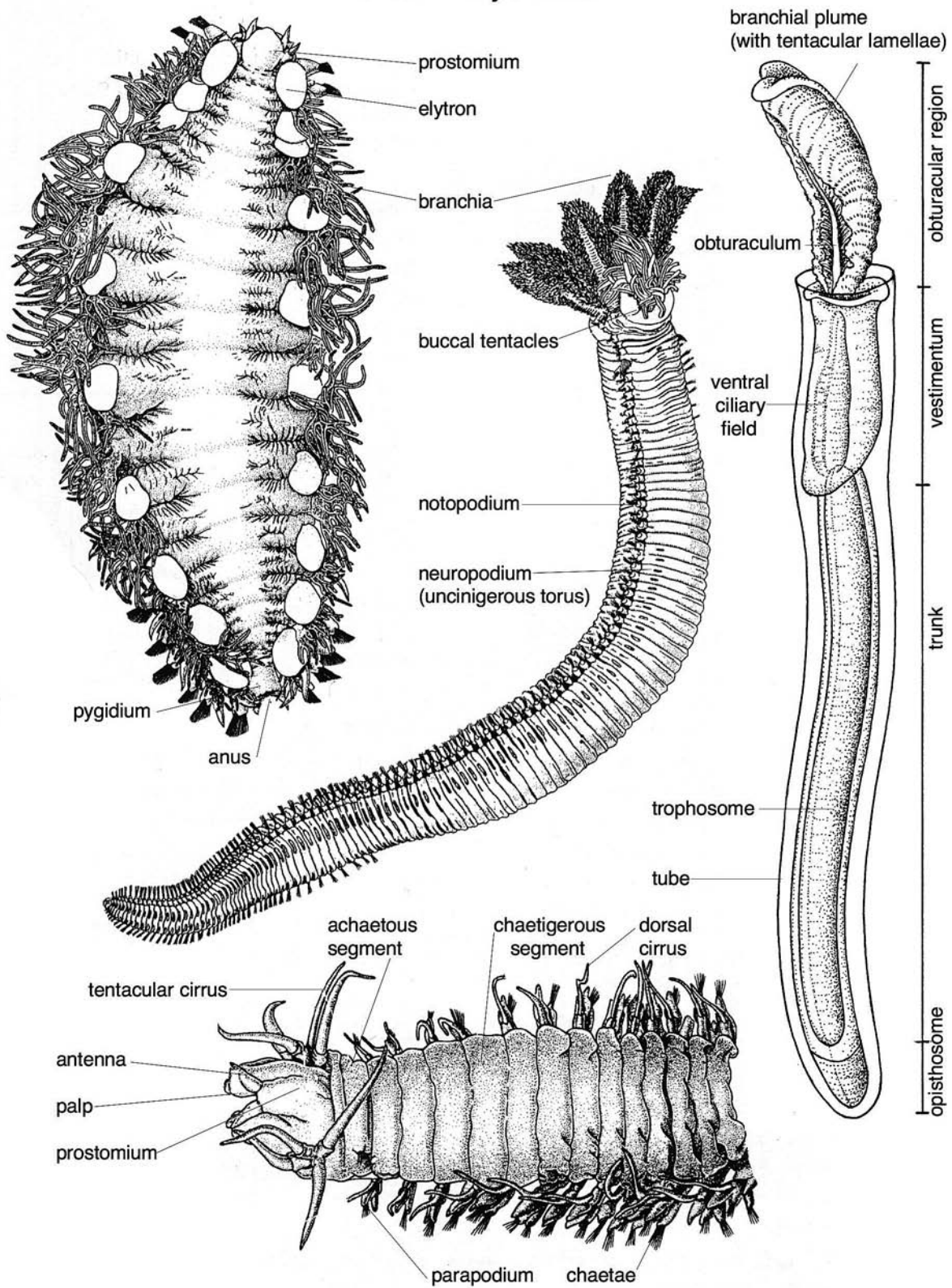


arm with double zig-zag row of suckers



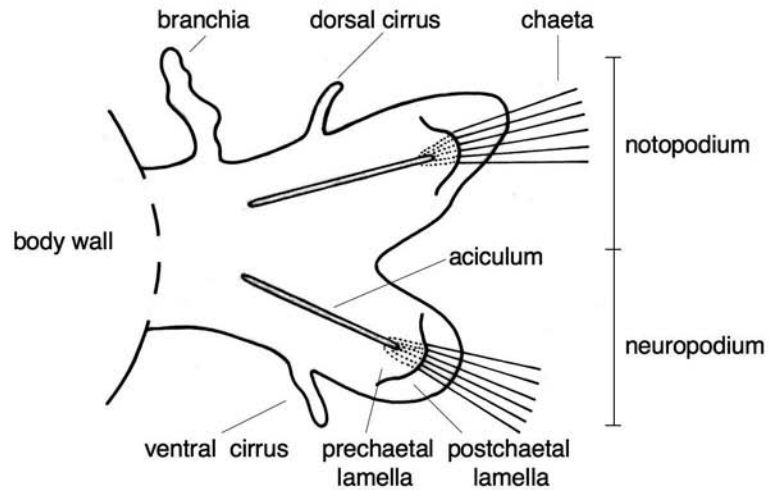
hectocotylus
3rd right arm of males

Annelida, Polychaeta

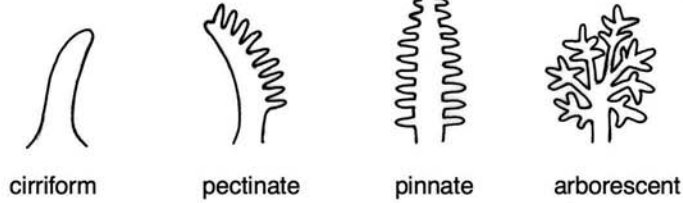


Annelida, Polychaeta

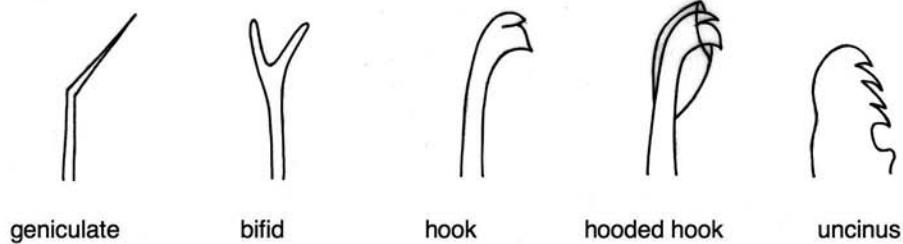
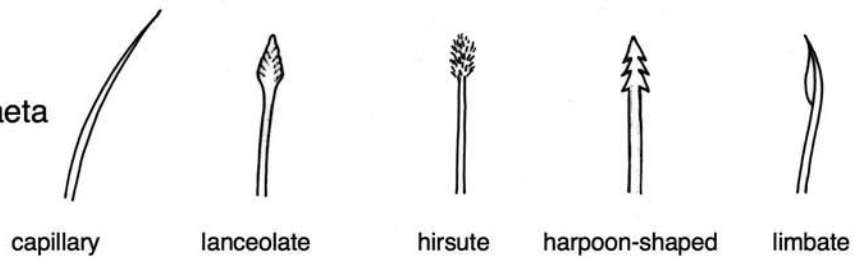
parapodium



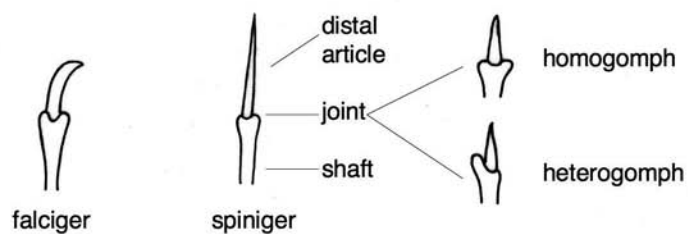
branchia



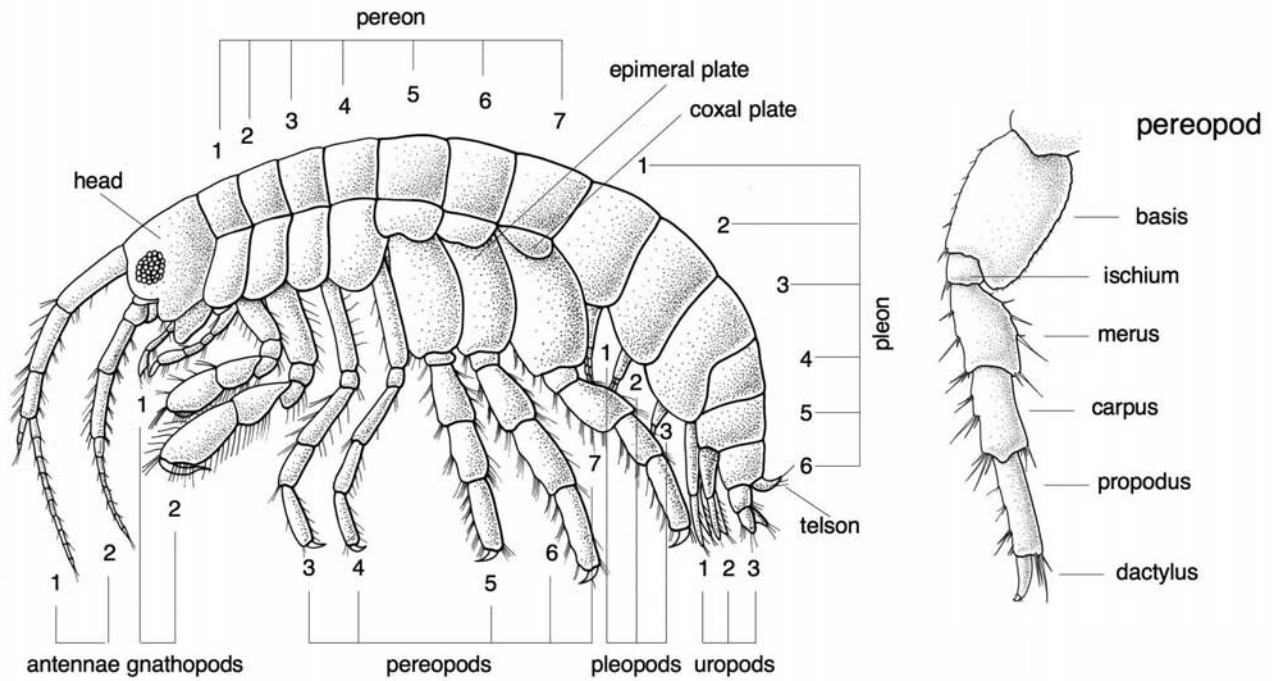
simple chaeta



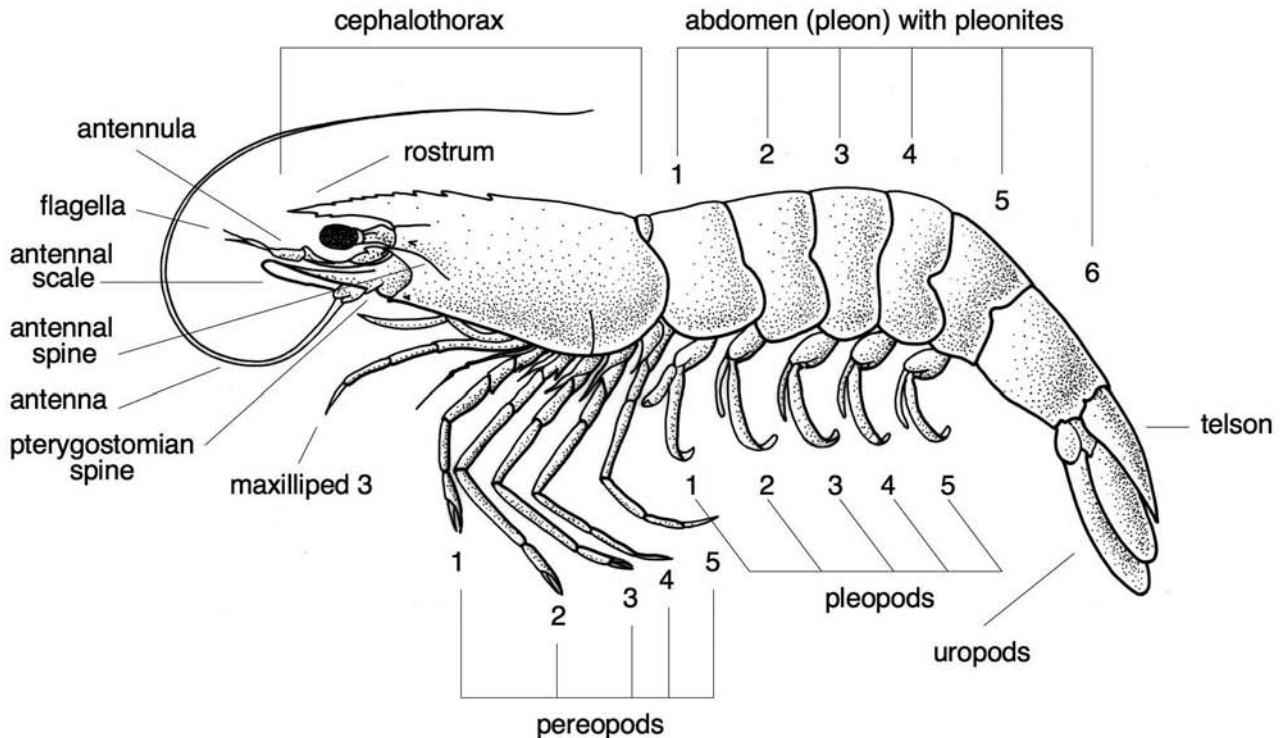
compound chaeta



Arthropoda, Amphipoda

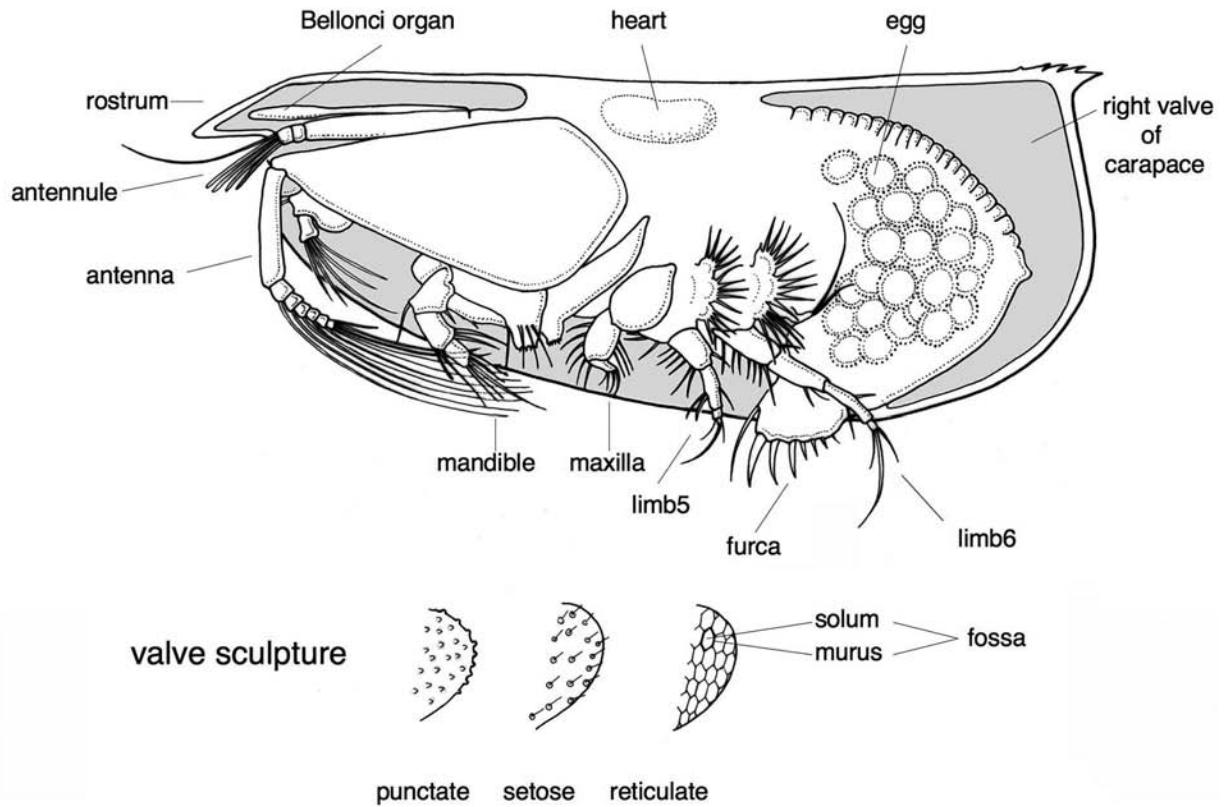


Arthropoda, Decapoda, Carididae

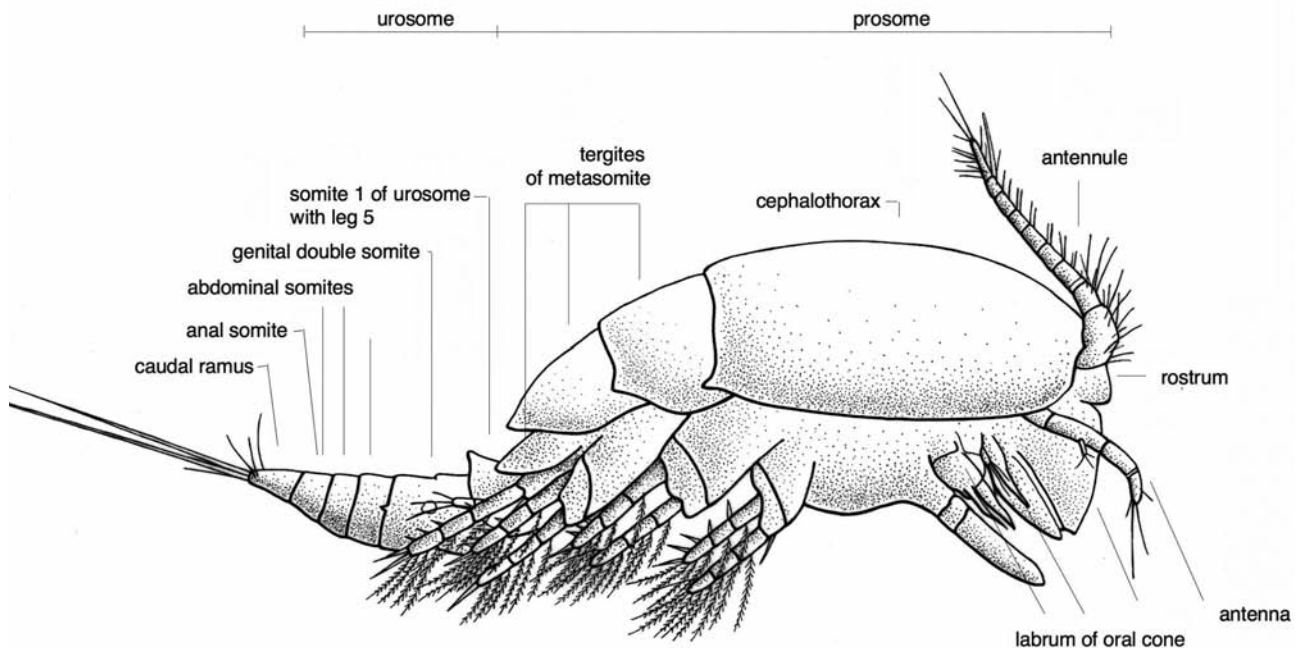


Total length (TL): from the tip of the rostrum to the tip of the telson. Cephalothorax length (CL): from the level of the posterior margin of the orbit to the midpoint of the posterodorsal margin of the carapace.

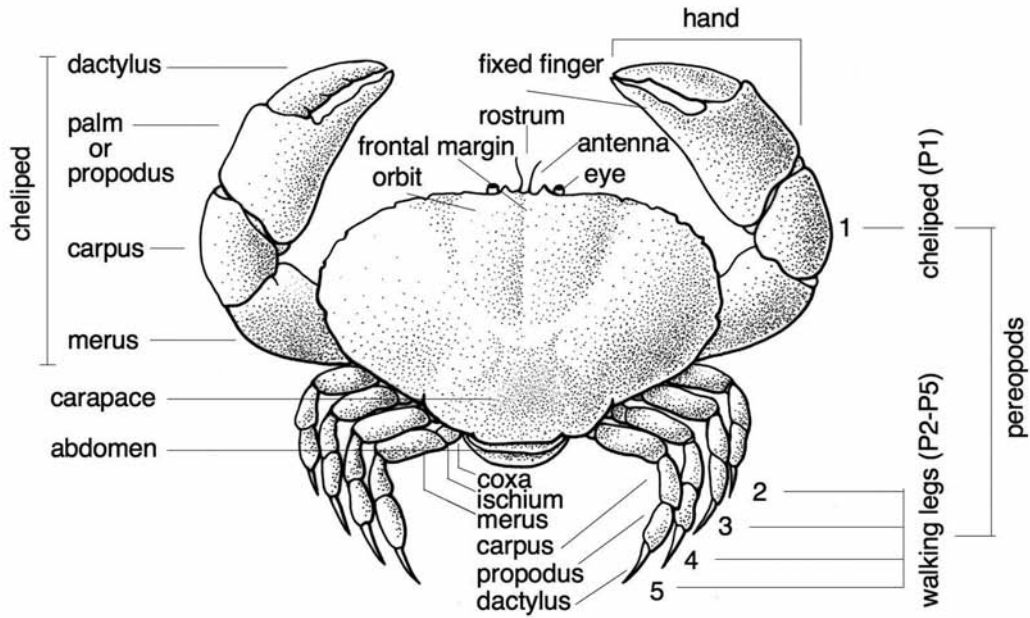
Arthropoda, Ostracoda



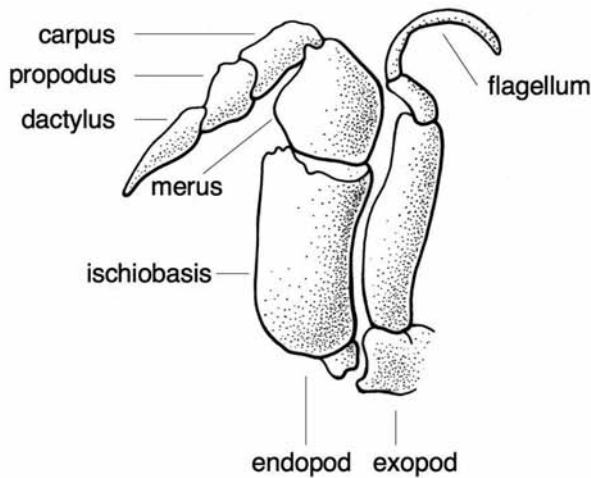
Arthropoda, Copepoda



Arthropoda, Decapoda, Brachyura

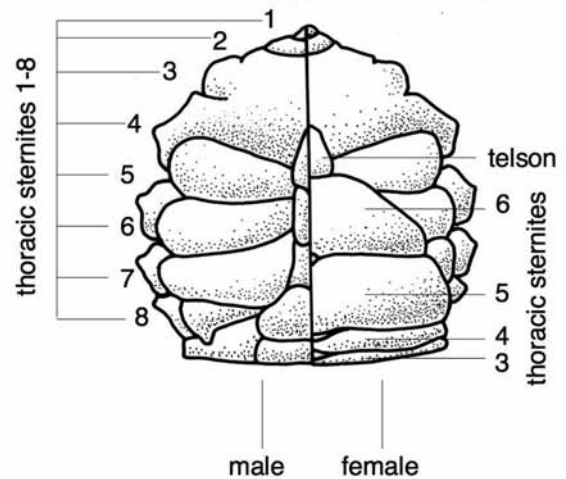


maxilliped 3

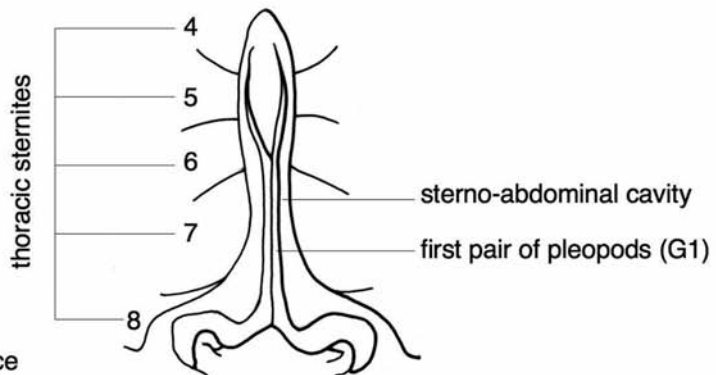


abdomen

central and hind parts - ventral view

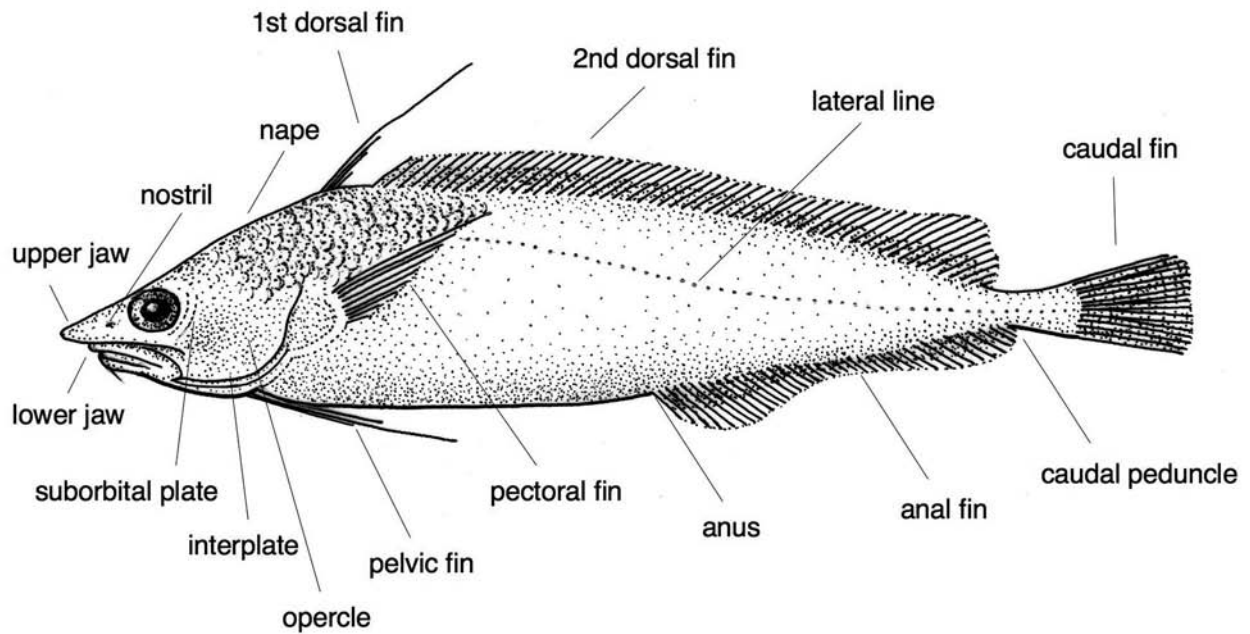


thoracic sternum of male
after removal of abdomen
showing first pair of pleopods
(copulatory organs)



Width: the biggest width of the carapace

Vertebrata, Osteichthyes



Total length (TL): from the tip of the nose to the end of the longest ray of the caudal fin

Standard length (SL): from the tip of the nose to the end of the last vertebra
approximately a little before the base of the caudal rays

ZOBODAT - www.zobodat.at

Zoologisch-Botanische Datenbank/Zoological-Botanical Database

Digitale Literatur/Digital Literature

Zeitschrift/Journal: [Denisia](#)

Jahr/Year: 2006

Band/Volume: [0018](#)

Autor(en)/Author(s): Anonym

Artikel/Article: [Cnidaria, Anthozoa 532-541](#)