



This work is licensed under a Creative Commons Attribution 3.0 License.

## Research article

[urn:lsid:zoobank.org:pub:737E4245-5F88-4699-AE8E-A9699D0A20A1](http://urn:lsid:zoobank.org:pub:737E4245-5F88-4699-AE8E-A9699D0A20A1)

# *Afroneutria*, a new spider genus of Afrotropical Ctenidae (Arachnida, Araneae)

Daniele POLOTOW<sup>1,\*</sup> & Rudy JOCQUÉ<sup>2</sup>

<sup>1</sup> Instituto Butantan, Laboratório Especial de Coleções Zoológicas, Av. Vital Brasil, 1500, Butantã, São Paulo, CEP 05503-000, Brazil. Corresponding author: [danielepolotow@gmail.com](mailto:danielepolotow@gmail.com)

<sup>2</sup> Royal Museum for Central Africa, Tervuren, Belgium. Email: [rudy.jocque@africanmuseum.be](mailto:rudy.jocque@africanmuseum.be)

<sup>1</sup> [urn:lsid:zoobank.org:author:133DA297-CBF8-4F7B-BD52-9A917F663594](http://urn:lsid:zoobank.org:author:133DA297-CBF8-4F7B-BD52-9A917F663594)

<sup>2</sup> [urn:lsid:zoobank.org:author:CF15016C-8CD1-4C9D-9021-44CA7DC7A5D5](http://urn:lsid:zoobank.org:author:CF15016C-8CD1-4C9D-9021-44CA7DC7A5D5)

**Abstract.** The new ctenid genus *Afroneutria* is proposed to include five species: *Afroneutria velox* (Blackwall, 1865) comb. nov. (type species), *A. immortalis* (Arts, 1912) comb. nov., *A. erythrochelis* (Simon, 1876) comb. nov., *A. quadrimaculata* sp. nov. and *A. hybrida* sp. nov., all collected in central to southeast Africa. *Afroneutria* species can be distinguished from the remaining Ctenidae by the presence of a synapomorphic laminar projection on the embolus tip. The genus can also be distinguished by the presence of the following set of characters: elongated cup-shaped median apophysis and elongated and laminar embolus on the male palp; large lateral projections on the epigynum and the spermathecae divided into two parts, dorsal and ventral, in the vulva.

**Keywords.** Africa, *Ctenus*, systematics, taxonomy

Polotow D. & Jocqué R. 2015. *Afroneutria*, a new spider genus of Afrotropical Ctenidae (Arachnida, Araneae). *European Journal of Taxonomy* 121: 1–27. <http://dx.doi.org/10.5852/ejt.2015.121>

## Introduction

Ctenidae Keyserling, 1877 is composed of nocturnal and cursorial spiders, common in the lower strata of tropical forests of South and Central America, Asia and Africa. To date, the family comprises 491 species, distributed in 40 genera (World Spider Catalog 2014). Currently, most of the Ctenidae species are placed in the genus *Ctenus* Walckenaer, 1805. Based on a new diagnosis and recent cladistic analysis, *Ctenus* is considered polyphyletic as currently delimited (Silva 2003; Simó & Brescovit 2001; Brescovit & Simó 2007; Polotow & Brescovit 2009, 2014).

According to the phylogenetic hypothesis proposed by Polotow & Brescovit (2014), several *Ctenus* species need to be allocated to new genera, including a clade formed by *Ctenus velox* Blackwall, 1865, *C. immortalis* Arts, 1912 and *C. erythrochelis* Simon, 1876. They appear as a well-supported group, not related to the type species of the genus, *Ctenus dubius* Walckenaer, 1805 (Polotow & Brescovit 2014: fig. 3, clade D).

The aim of this paper is to establish the new Afrotropical ctenid genus *Afroneutria* to accommodate five species: *Afroneutria velox* (Blackwall, 1865) comb. nov. (type species), *A. immortalis* (Arts, 1912) comb. nov., *A. erythrochelis* (Simon, 1876) comb. nov., *A. quadrimaculata* sp. nov. and *A. hybrida* sp. nov., all collected in central and East Africa. We also reestablish *A. immortalis* comb. nov., previously considered a synonym of *A. velox* comb. nov.

## Material and methods

Morphological observations and illustrations were made using a Wild M10 and a Wild M5 stereo microscope. The epigynum was detached from the abdomen and submerged in methyl salicylate to clear the internal structures. For SEM, specimens were cleaned ultrasonically, dried through critical point, gold coated, and then examined and photographed with a JEOL 6480 LV scanning electron microscope at the Royal Museum for Central Africa, Tervuren, Belgium (MRAC). All measurements are in millimeters.

The following abbreviations are used below:

ALE	=	anterior lateral eyes
AME	=	anterior median eyes
C	=	conductor
CD	=	copulatory ducts
Cy	=	cymbium
d	=	dorsal
E	=	embolus
FD	=	fertilization ducts
LL	=	locking lobes
LS	=	lateral sector
MA	=	median apophysis
MS	=	median sector
p	=	prolateral
PLE	=	posterior lateral eyes
PME	=	posterior median eyes
r	=	retrolateral
RTA	=	retrolateral tibial apophysis
S	=	spermathecae
Te	=	tegulum
Ti	=	tibiae
v	=	ventral

The material examined is deposited in the following institutions (curator in parentheses):

BMNH	=	The Natural History Museum, London (J. Beccaloni)
MNHN	=	Muséum National d'Histoire Naturelle, Paris (C. Rollard)
MRAC	=	Royal Museum for Central Africa, Tervuren (R. Jocqué)
OUMNH	=	Oxford University Museum of Natural History (Z. Simmons)
ZMB	=	Zoological Museum of Berlin (J. Dunlop)
ZMUC	=	Zoological Museum, University of Copenhagen (N. Scharff)

## Results

Class Arachnida Cuvier, 1812  
Order Araneae Clerck, 1757  
Family Ctenidae Keyserling, 1877  
Subfamily Cteninae Keyserling, 1877

Genus *Afroneutria* gen. nov.

[urn:lsid:zoobank.org:act:59ECDA85-C86E-416E-A98D-CB1DD6AB5DA1](http://urn:lsid:zoobank.org:act:59ECDA85-C86E-416E-A98D-CB1DD6AB5DA1)

### Type species

*Ctenus velox* Blackwall, 1865. Designated here.

### Diagnosis

*Afroneutria* species can be distinguished from the remaining Ctenidae by the presence of a synapomorphic laminar projection on the embolus tip (Fig. 1B; Polotow & Brescovit 2014: character 25, fig. 3). The genus can also be distinguished from the remaining Cteninae spiders by the presence of the following set of characters: elongated cup-shaped median apophysis and elongated and laminar embolus on the male palp (Fig. 1A–B); large lateral projections on the epigynum and the spermathecae divided into two parts, dorsal and ventral, in the vulva (Fig. 1C).

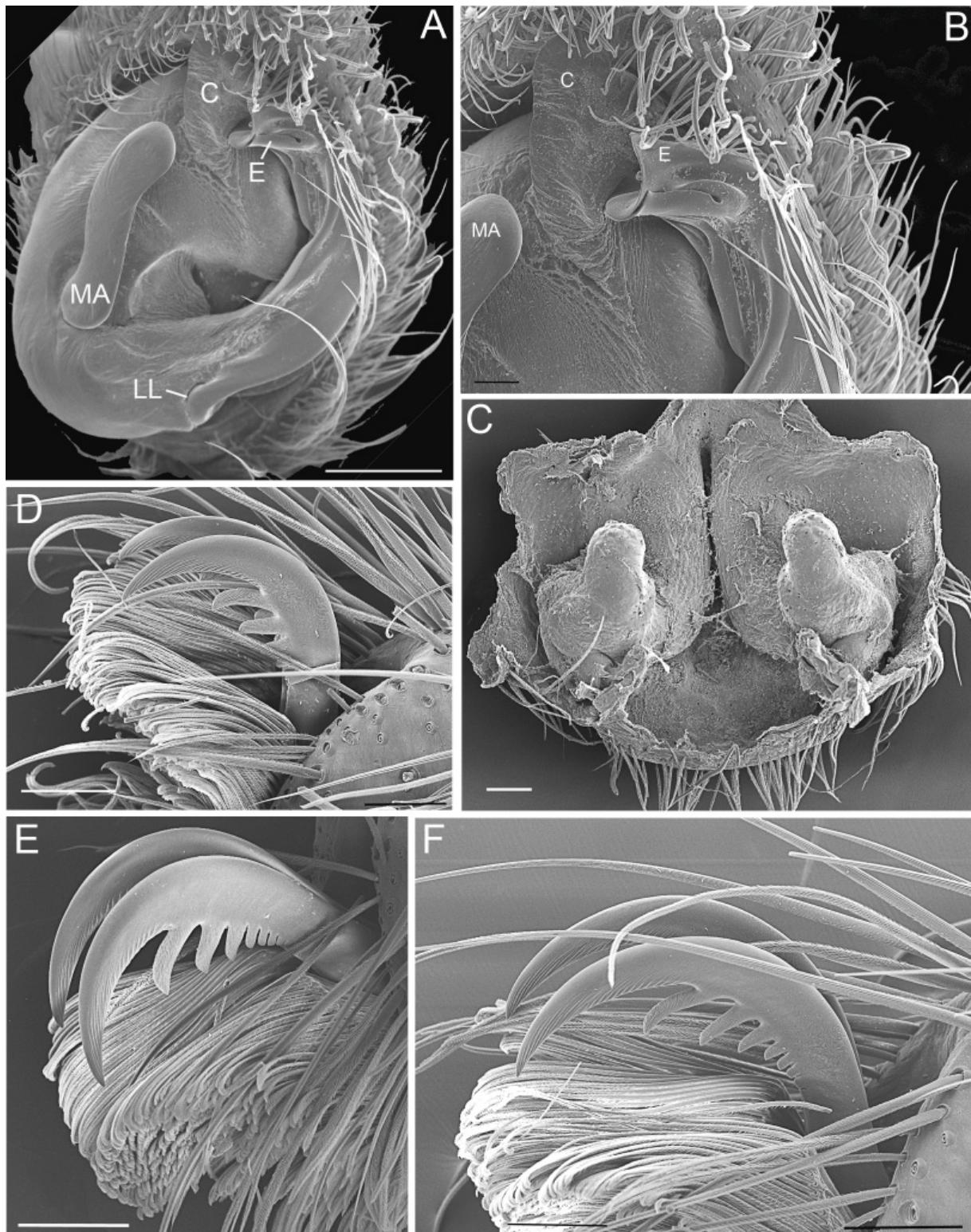
### Etymology

The generic name is a combination of the first part of Afrotropical and the last part of *Phoneutria* Perty, 1833, a Neotropical genus that bears superficial similarities with the genus described here. The gender is feminine.

### Description

Ecribellate ctenids. Total body length (males and females) 12.40–32.00. Carapace piriform (Fig. 2A, C), brown, covered by white hairs in longitudinal median area and in lateral area; tuft of long white hairs between PME; border with white hairs; thoracic groove longitudinal, in posterior third; except *A. erythrochelis* comb. nov., which is covered by golden hairs. Chilum divided. Clypeus with long erect black bristles. Ctenid eye pattern 2-4-2, with anterior and posterior row recurved in dorsal view. Eyes round, except oval anterior lateral eyes. Chelicerae dark brown, covered by white hairs (except *A. erythrochelis* comb. nov., covered with golden hairs); promargin with three teeth, the median higher than the laterals; retromargin with four similar sized teeth; prominent basal condyle; intermarginal denticles present only in *A. immortalis* comb. nov. and *A. hybrida* sp. nov. Endites reddish brown with lighter apical area, external lateral margin excavated, distally bearing dense apical scopulae and subapical serrula. Labium dark brown, distally rounded, bearing dense apical scopula. Sternum reddish brown, oval, not extending between coxae IV. Legs reddish brown. Male legs more elongated and slender than female legs. Trochanter notched. Tarsus with claw tufts (Fig. 1D–F) composed of tenent setae, specialized in adhesion to smooth surfaces (Ramírez 2014). Abdomen oval, with tufts of white hairs and numerous black setae on anterior dorsal area (Figs 2A–D, 4A–D, 6A–D, 8A–D, 10A–B). Males and females with specific ventral coloration pattern on abdomen (Figs 2B, D; 4B, D; 6B, D; 8B, D; 10B). Male palp (Figs 1A–B, 3A–C, 5A–C, 7A–B, 9A–C, 11A–B, 13A–D, 14A–B, 15A–D): tibia with short VTA; short RTA with three projections, except *A. erythrochelis* comb. nov. with two projections and *A. hybrida* sp. nov. with truncated tip; cymbium with elongated tip; subtegulum prolateral, except *A. erythrochelis* comb. nov. with retrolateral subtegulum; tegulum oval; median apophysis cup-shaped and elongated; embolus elongated with retrolateral area hyaline and complex tip; locking lobes present; conductor short and partially sclerotized. Epigynum (Figs 3D–E, 5D–E, 7C–D, 9D–E, 12A–D): divided in median field and two lateral fields; median field with anterior area narrow and posterior area swollen and large; lateral





**Fig. 1.** *Afroneutria velox* (Blackwall, 1865) comb. nov.. — A–B. Male palp, ventral view. — C–F. ♀. C. Epigynum, dorsal view. D–F. Tarsus, lateral view. D. Leg III. E. Leg I. F. Leg IV. Scale bars = 200  $\mu$ m.

POLOTOW D. & JOCQUÉ R., A new genus of Afrotropical Ctenidae (Araneae)

---

field with lateral projections; lateral projections covering part of median field; copulatory opening with lighter area; spermathecae divided in two parts, ventral and dorsal; copulatory duct ending in ventral part; fertilization duct arising of dorsal part (Figs 1C, 3D–E, 5D–E, 7C–D, 9D–E).

**Composition**

Five species: *Afroneutria velox* comb. nov., *A. immortalis* comb. nov., *A. erythrochelis* comb. nov., *A. quadrimaculata* sp. nov. and *A. hybrida* sp. nov.

**Distribution**

Central and southeast Africa (Figs 16A–B).

*Afroneutria velox* (Blackwall, 1865) comb. nov.  
Figs 1A–F, 2A–D, 3A–E, 12D, 13A–B, 16A

*Ctenus velox* Blackwall, 1865: 336.

*Phoneutria melanogastra* Bösenberg & Lenz, 1895: 36, pl. 1, fig. 14.

*Ctenus marshalli* F.O. Pickard-Cambridge, 1898: 26, pl. 4, figs 12–13.

*Ctenus velox* – F.O. Pickard-Cambridge 1898: 15, pl. 3, figs 1–2. — Benoit 1977: 700, fig. 2a–d.

*Ctenus melanogaster* – Strand 1907: 694. — Arts 1912: 196, pl. 1, fig. 14a–b. — Benoit 1977: 700, fig. 2a–d (synonymised with *C. velox*).

*Ctenus melanogastra* – Hyatt 1954: 884.

*Ctenus marshalli* – Hyatt 1954: 884 (synonymised with *C. melanogaster*).

**Note**

Blackwall (1865) indicated one female as the type material used in the description of *Ctenus velox*, but two adult females were found in the OUMNH collection and, according to the label, both were designated as types. Based on the original description we here designate the smaller specimen as the lectotype and the other female as the paralectotype.

**Diagnosis**

The males of *Afroneutria velox* comb. nov. differ from males of the other species of the genus by the laminar and truncated tip and the additional subdistal projection of the embolus (Fig. 1B) and the shape of the RTA (Fig. 3A–C). The females can be distinguished from the remaining species of the genus by the acuminate and short lateral projections of the epigynum and rounded dorsal spermathecae in the vulva (Fig. 3D–E).

**Material examined**

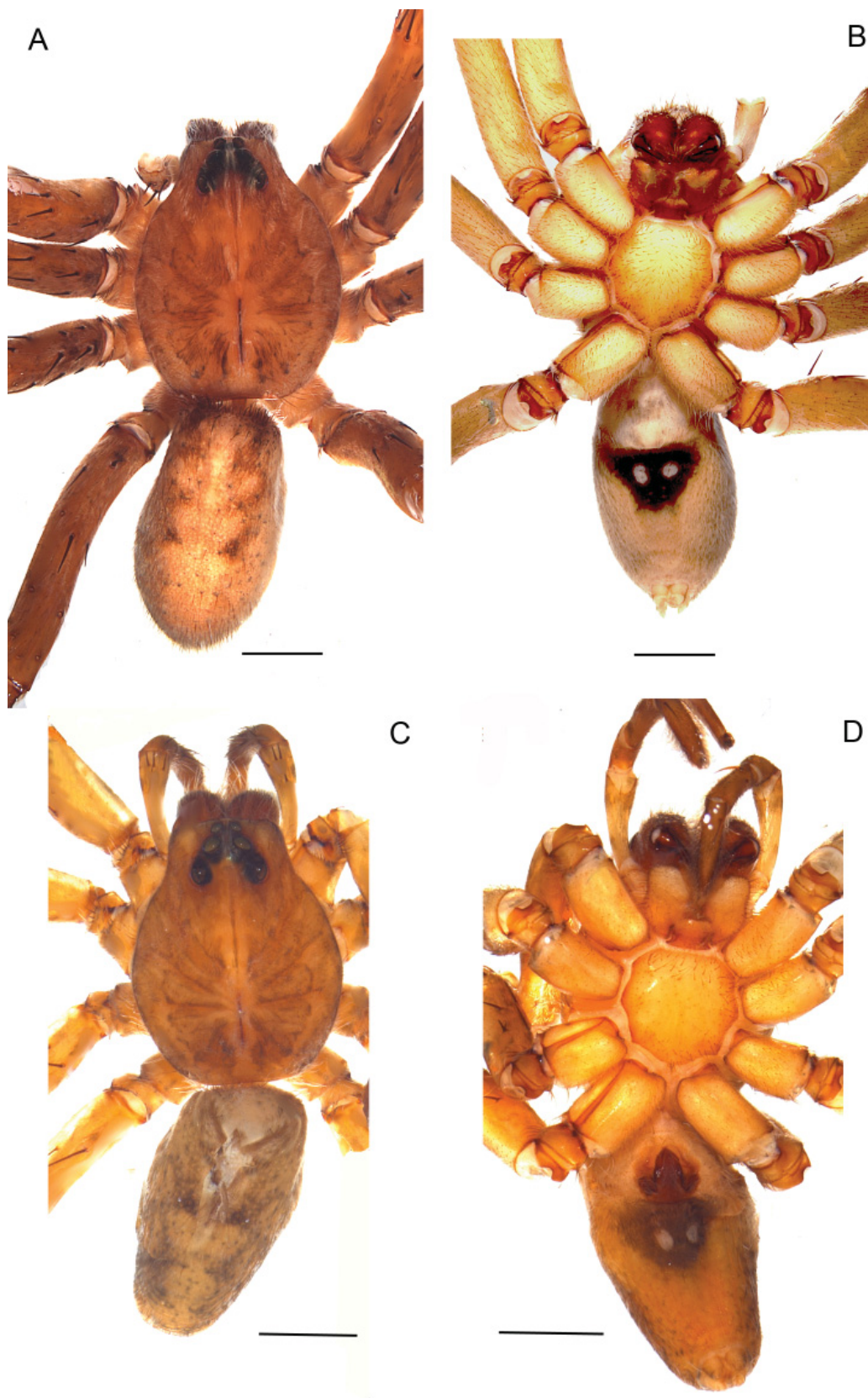
**Type material**

MOZAMBIQUE: *Ctenus velox*, female lectotype (designated here), 1 female paralectotype, next to confluence of Shiré River with Zambezi River (approximate coordinates: 17°40'24.0" S, 35°17'51.2" E), OUMNH 1554.

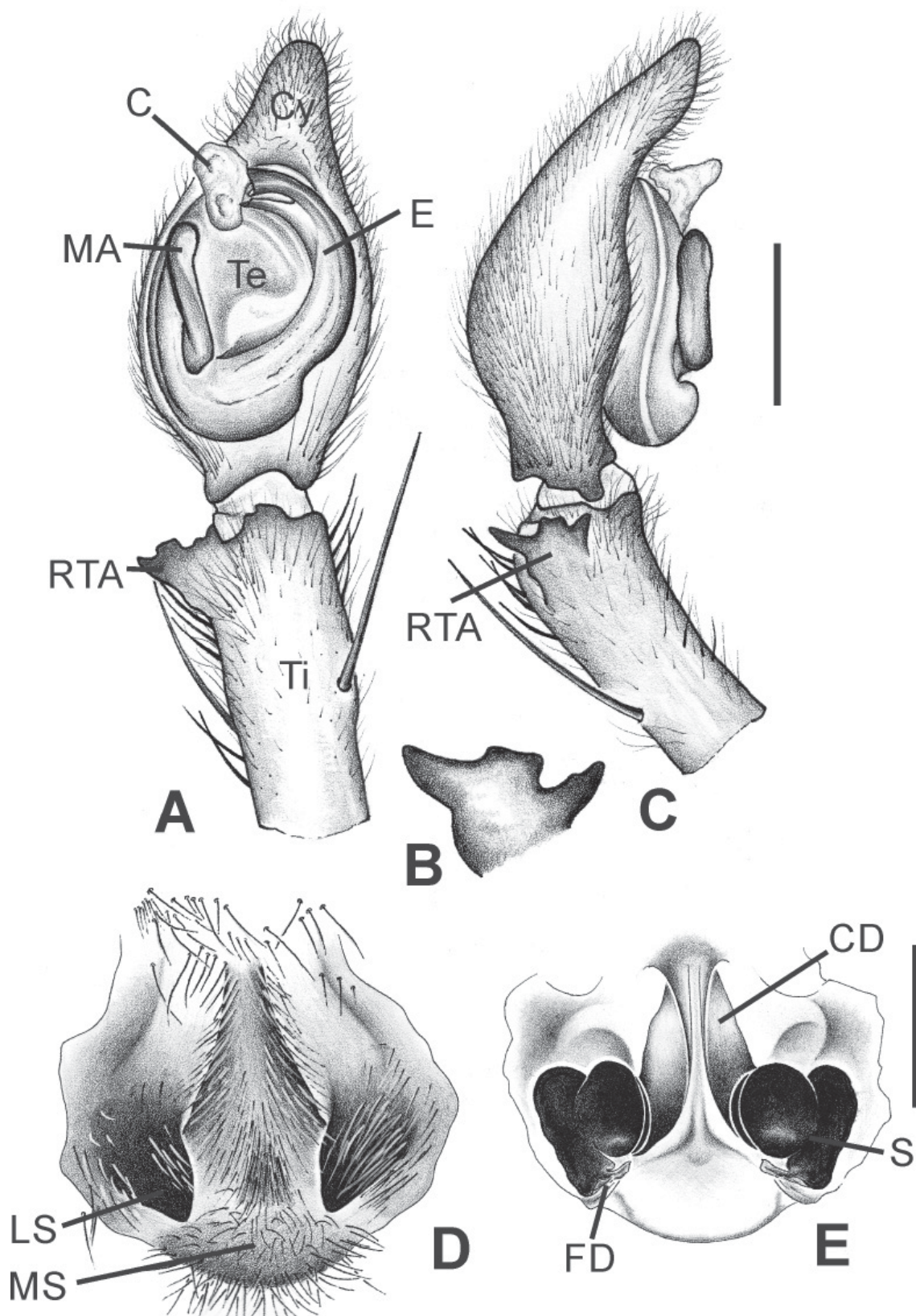
**Additional material**

TANZANIA: Kipatimu, 1 ♂, 1965, T.H. Hofman coll. (MRAC 137443); Kyela, 1 ♀, 9 Nov. 1991, R. Jocqué coll. (MRAC 173465); 1 ♀, 27 Nov. 1991, R. Jocqué coll. (MRAC 173191); Coast Province, Utete, Kirengoma Forest Reserve (8°20–23' S, 38°54–58' E), 2 ♂♂, 8 Nov.–1 Dec. 1989, J. Kingdon & Frontier Tanzania coll. (ZMUC); Coast Province, Bagamoyo, Zaraninge (Kiono) Forest Reserve, 20 km SW of Sadaani (6°04' S, 38°35' E), 2 ♂♂, 1 ♀, Mar. 1990, Frontier Tanzania coll. (ZMUC).





**Fig. 2.** *Afroneutria velox* (Blackwall, 1865) comb. nov. Habitus. A. ♂, dorsal view. B. ♂, ventral view. C. ♀, dorsal view. D. ♀, ventral view. Scale bars = 1 mm.



**Fig. 3.** *Afroneutria velox* (Blackwall, 1865) comb. nov. — **A–C.** Male palp. **A.** Ventral view. **B.** Retrolateral view. **C.** Retrolateral tibial apophysis, lateral view. — **D–E.** Female genitalia. **D.** Epigynum, ventral view. **E.** Vulva, dorsal view. Scale bars = 1 mm.

MALAWI: Chinthече, 1 ♂, 1 ♀, 1–20 Nov. 1977, R. Jocqué coll. (MRAC 155299).

DEMOCRATIC REPUBLIC OF THE CONGO: Elisabethville, Katanga, 1 ♀, 30 Jan. 1931, Bredo coll. (MRAC 15545); Buttgenbach, Lubumbashi, 1 ♀ (MRAC 25506).

### Type material not examined

EAST AFRICA: *Phoneutria melanogastra*, 2 male syntypes, 1 female syntype, deposited in Zoologisches Museum Hamburg.

ZIMBABWE: *Ctenus marshalli*, holotype, ♂, Umfuli River, also known as Mupfure River (approximate coordinates: 17°55'13.3" S, 29°56'40.7" E), Mashonaland, BMNH.

### Description

#### Male (MRAC 155299)

Total length 12.30. Carapace 6.20 long and 4.60 wide. Eye diameter: AME 0.32, ALE 0.18, PME 0.60, PLE 0.56. Leg measurements: I: femur 8.40 / patella 3.20 / tibia 8.70 / metatarsus 8.60 / tarsus 3.30 / total 32.20; II: 8.10 / 3.30 / 7.40 / 7.60 / 2.80 / 29.20; III: 6.80 / 2.60 / 5.70 / 6.40 / 2.30 / 23.80; IV: 9.30 / 2.60 / 8.90 / 11.10 / 3.30 / 35.20. Leg formula 4123. Leg spination: tibia I and II v2-2-2-2, r1-1, p1-1; III and IV v2-2-2, r1-1, p1-1; metatarsus I, II and III v2-2-2, p1-1-1, r1-1-1; IV v1-1-1-1-1-2, r1-1-1, p1-1-1. Coloration: venter of abdomen black, with two white spots placed transversely behind epigastric furrow (Fig. 2B). Palp: cymbium elongated, longer than tibia; conductor rectangular; median apophysis slightly curved (Figs 1A–B, 3A–C, 13A–B).

#### Female (MRAC 173465)

Total length 18.60. Carapace 8.10 long and 6.40 wide. Eye diameter: AME 0.36, ALE 0.24, PME 0.60, PLE 0.48. Leg measurements: I: femur 6.80 / patella 3.10 / tibia 6.30 / metatarsus 6.00 / tarsus 2.20 / total 24.40; II: 6.30 / 2.90 / 5.40 / 5.50 / 2.10 / 22.20; III: 5.20 / 2.30 / 4.50 / 5.10 / 2.10 / 19.20; IV: 7.50 / 2.60 / 6.60 / 8.40 / 2.30 / 27.40. Leg formula 4123. Leg spination: tibia I and II v2-2-2-2, r0, p0; III and IV v2-2-2, r1-1, p1-1; metatarsus I and II v2-2-2, r0, p0; III v2-2-2, r1-1-1, p1-1-1; IV v1-1-1-1-1-2, r1-1-1, p1-1-1. Coloration: ventral abdomen black, with two white spots placed transversely behind epigastric furrow (Fig. 2C–D). Epigynum: triangular median field and short lateral projections of lateral fields of epigynum (Fig. 3D). Dorsal spermathecae short and round; ventral spermathecae with rebordered lateral margins (Figs 1C, 3E, 12D).

#### Variation

Two ♂♂: total length 10.60–12.40, carapace length 6.00–6.30, femur I length 7.10–8.70. Three ♀♀: total length 16.40–18.70, carapace length 7.00–8.10, femur I length 6.20–6.50. At least two ♂♂ present venter of abdomen black in front, red towards back, with two spots placed transversely behind epigastric furrow.

### Distribution

Tanzania, Malawi, Mozambique, Democratic Republic of the Congo and Zimbabwe (Fig. 16A).

*Afroneutria immortalis* (Arts, 1912) revalidated, comb. nov.  
Figs 4A–D, 5A–E, 12A, 14A–B, 16A

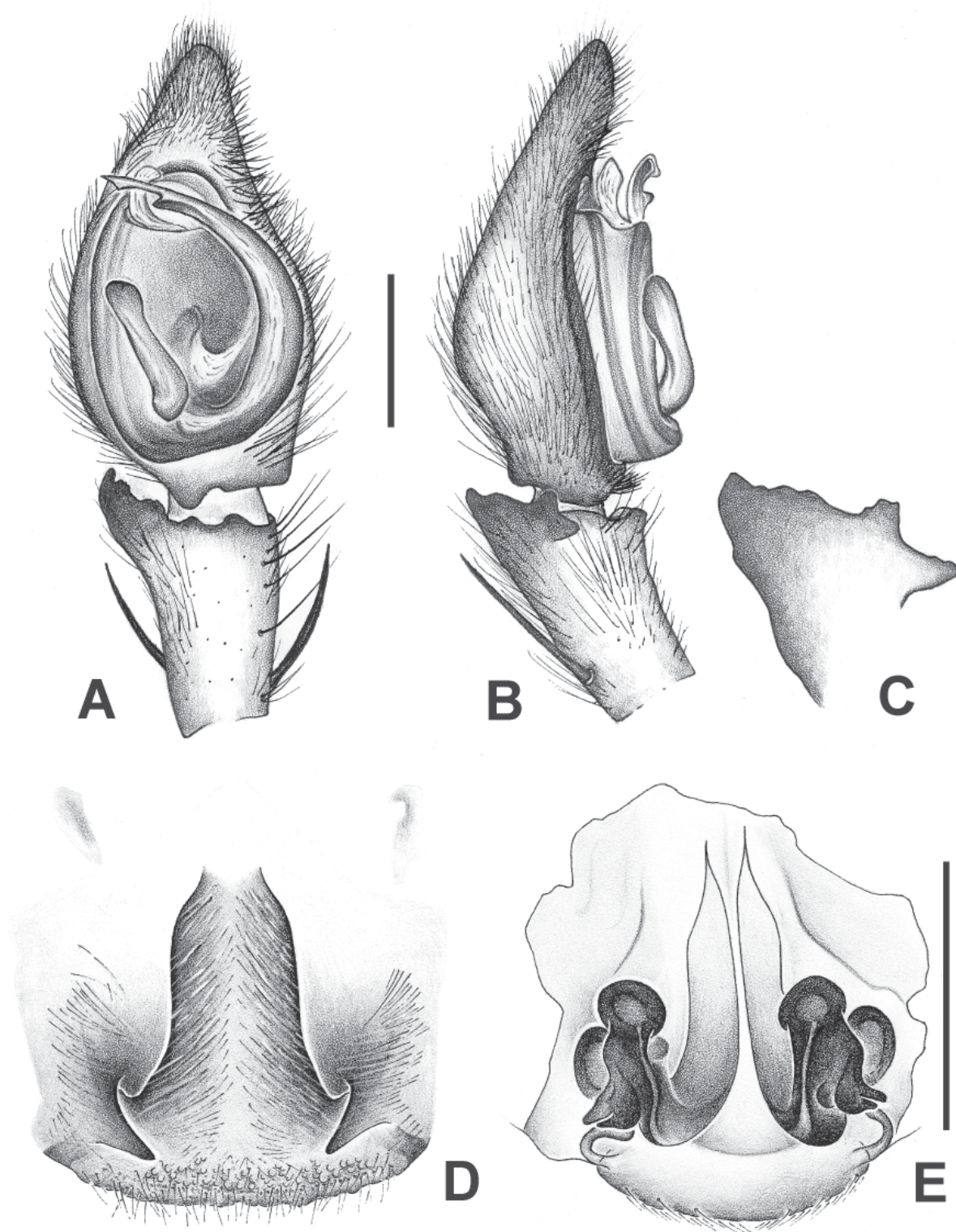
*Ctenus immortalis* Arts, 1912: 202, pl. 2, fig. 25.

*Ctenus velox* – Benoit 1977: 700, fig. 2a–d (misidentified and wrongly synonymised with *C. immortalis*).  
*Ctenus immortalis* – Polotow & Brescovit 2014: 335, 338, 348, 355.





**Fig. 4.** *Afroneutria immortalis* (Arts, 1912) comb. nov. Habitus. A. ♂, dorsal view. B. ♂, ventral view. C. ♀, dorsal view. D. ♀, ventral view. Scale bars = 2 mm.



**Fig. 5.** *Afroneutria immortalis* (Arts, 1912) comb. nov. — **A–C.** Male palp. **A.** Ventral view. **B.** Retrolateral view. **C.** Retrolateral tibial apophysis, lateral view. — **D–E.** Female genitalia. **D.** Epigynum, ventral view. **E.** Vulva, dorsal view. Scale bars = 1 mm.



POLOTOW D. & JOCQUÉ R., A new genus of Afrotropical Ctenidae (Araneae)

**Diagnosis**

The males of *Afroneutria immortalis* comb. nov. differ from those of the other species of the genus by the elongated tip and short additional laminar projection of the embolus on the male palp (Figs 5A, 14A; Polotow & Brescovit 2014: fig. 8f, indicated by an arrow) and the shape of the RTA (Fig. 5C; Polotow & Brescovit 2014: fig. 8d). The females can be distinguished by the acute lateral spurs (Figs 5D, 12A) and straight dorsal and ventral spermathecae with a swollen apical area (Fig. 5E).

**Material examined**

**Type material**

TANZANIA: *Ctenus immortalis*, 1 syntype, ♂, Langenburg (currently Tukuyu), Fülleborn coll., ZMB 9884; syntypes, ♀♀, Dar-es-Salam, Stuhlmann coll., ZMB 9883; syntypes, ♀♀, Dar-es-Salam, Regner coll., ZMB 9881.

KENYA: *Ctenus immortalis*, syntypes, 1 ♀, 2 immature, Kibwezi, Schütter coll., ZMB 9882 and 9885.

**Additional material**

KENYA: Coast Province, Arabuko Sokoke National Park, 1 ♀, 25 Sep. 2001, D. Van den Spiegel coll. (MRAC 211539); Tsavo, Taita West National Park, Taita Hills, Mwachora, pitfalls, 1 ♂, 20 Jun. 1999, D. Van den Spiegel coll. (MRAC 208828); Tsavo, Taita Discovery Center, 1 ♂, 27 Mar. 2000, R. Jocqué & C. Warui coll. (MRAC 209543); Watamu, 1 ♂, 1977, J.L. Cloudsley-Thompson coll. (MRAC 148774).

TANZANIA: Amani, Amani Forest Reserve, 1 ♀, Dec. 1978, K.M. Howell coll. (MRAC 159481); Mkomazi Game Reserve, Ibaya Hill, 1 ♂, 24 Nov. 1994, A. Russell-Smith coll. (MRAC 213883); Coast Province, Kisarawe, Kasimzumbwi Forest Reserve, 6°57' S, 39°03' E, 1 ♀, Jan.–Feb. 1991, Frontier Tanzania coll. (ZMUC); Coast Province, Mafia Island, 7°53' S, 39°50' E, 2 ♀♀, Oct.–Nov. 1990, Frontier Tanzania coll. (ZMUC).

**Description**

**Male** (MRAC 213883)

Total length 13.40. Carapace 7.20 long and 5.60 wide. Eye diameter: AME 0.32, ALE 0.18, PME 0.60, PLE 0.56. Leg measurements: I: femur 8.60 / patella 3.40 / tibia 8.90 / metatarsus 8.90 / tarsus 3.40 / total 33.20; II: 8.10 / 3.30 / 7.40 / 7.60 / 2.80 / 29.20; III: 6.80 / 2.60 / 5.70 / 6.40 / 2.30 / 23.80; IV: 9.50 / 2.80 / 9.10 / 11.30 / 3.50 / 36.20. Leg formula 4123. Leg spination: tibia I and II v2-2-2-2, r1-1, p1-1; III and IV v2-2-2, r1-1, p1-1; metatarsus I, II and III v2-2-2, p1-1-1, r1-1-1; IV v1-1-1-1-1-2, r1-1-1, p1-1-1. Coloration: venter of abdomen black, with two white spots in front of spinnerets (Fig. 4B). Palp: cymbium elongated, longer than tibia; conductor triangular; median apophysis slightly curved, with acute tip (Figs 5A–C, 14A–B).

**Female** (MRAC 211539)

Total length 16.40. Carapace 7.00 long and 5.40 wide. Eye diameter: AME 0.36, ALE 0.24, PME 0.60, PLE 0.48. Leg measurements: I: femur 6.80 / patella 3.00 / tibia 6.40 / metatarsus 6.00 / tarsus 2.20 / total 24.40; II: 6.30 / 2.90 / 5.40 / 5.50 / 2.10 / 22.20; III: 5.20 / 2.40 / 4.40 / 5.10 / 2.00 / 19.10; IV: 7.50 / 2.60 / 6.60 / 8.40 / 2.30 / 27.40. Leg formula 4123. Leg spination: tibia I and II v2-2-2-2, r0, p0; III and IV v2-2-2, r1-1, p1-1; metatarsus I and II v2-2-2, r0, p0; III v2-2-2, r1-1-1, p-1-1-1; IV v1-1-1-1-1-2, r1-1-1, p1-1-1. Coloration: venter of abdomen black, with two white spots in front of spinnerets (Fig. 4D). Epigynum: triangular median field and elongated lateral projections of lateral field (Figs 5D, 12A). Dorsal and ventral spermathecae elongated (Fig. 5E).



### Variation

Six ♂♂: total length 10.40–13.60, carapace length 5.30–7.20, femur I length 4.70–8.10. Two ♀♀: total length 15.70–16.40, carapace length 7.00–7.60, femur I length 6.80–7.90. Several ♀♀ with four white spots on venter of abdomen, two behind epigastric furrow, two in front of spinnerets.

### Distribution

Kenya and Tanzania (Fig. 16A).

### *Afroneutria erythrochelis* (Simon, 1876) comb. nov.

Figs 6A–D, 7A–D, 15C–D, 16B

*Phoneutria erythrochelis* Simon, 1876: 222.

*Phoneutria auricularis* Karsch, 1879: 347.

*Ctenus johnstoni* F.O. Pickard Cambridge, 1898: 21, pl. 3, fig. 7.

*Ctenus carsoni* F.O. Pickard Cambridge, 1898: 24, pl. 3, figs 4–5.

*Ctenus aureopubescentis* Strand, 1906: 82.

*Ctenus erythrochelis* – Simon 1897: 107, figs 98, 101. — Lessert 1915: 44, pl. 2, fig. 33.

*Phoneutria auricularis* – Arts 1912: 188, pl. 1, fig. 1.

*Ctenus johnstoni* – Arts 1912: 188, pl. 1, fig. 1.

*Ctenus carsoni* – Arts 1912: 188, pl. 1, fig. 1.

*Ctenus aureopubescentis* – Benoit 1977: 698, figs 1a–d.

### Diagnosis

The males of *Afroneutria erythrochelis* comb. nov. differ from those of the other species of the genus by the swollen retrolateral area of the cymbium, the curved median apophysis, the retrolateral base of the embolus and by the laminar projection of the embolus extending beyond its tip (Figs 7A–B, 15C–D). The females can be distinguished by the short lateral projections of the epigynum and the dorsal spermathecae curved ventrally, forming a spiral in the vulva (Figs 7C–D, 12C).

### Material examined

#### Type material

ANGOLA: *Phoneutria erythrochelis*, holotype, ♂, Landana, MNHN.

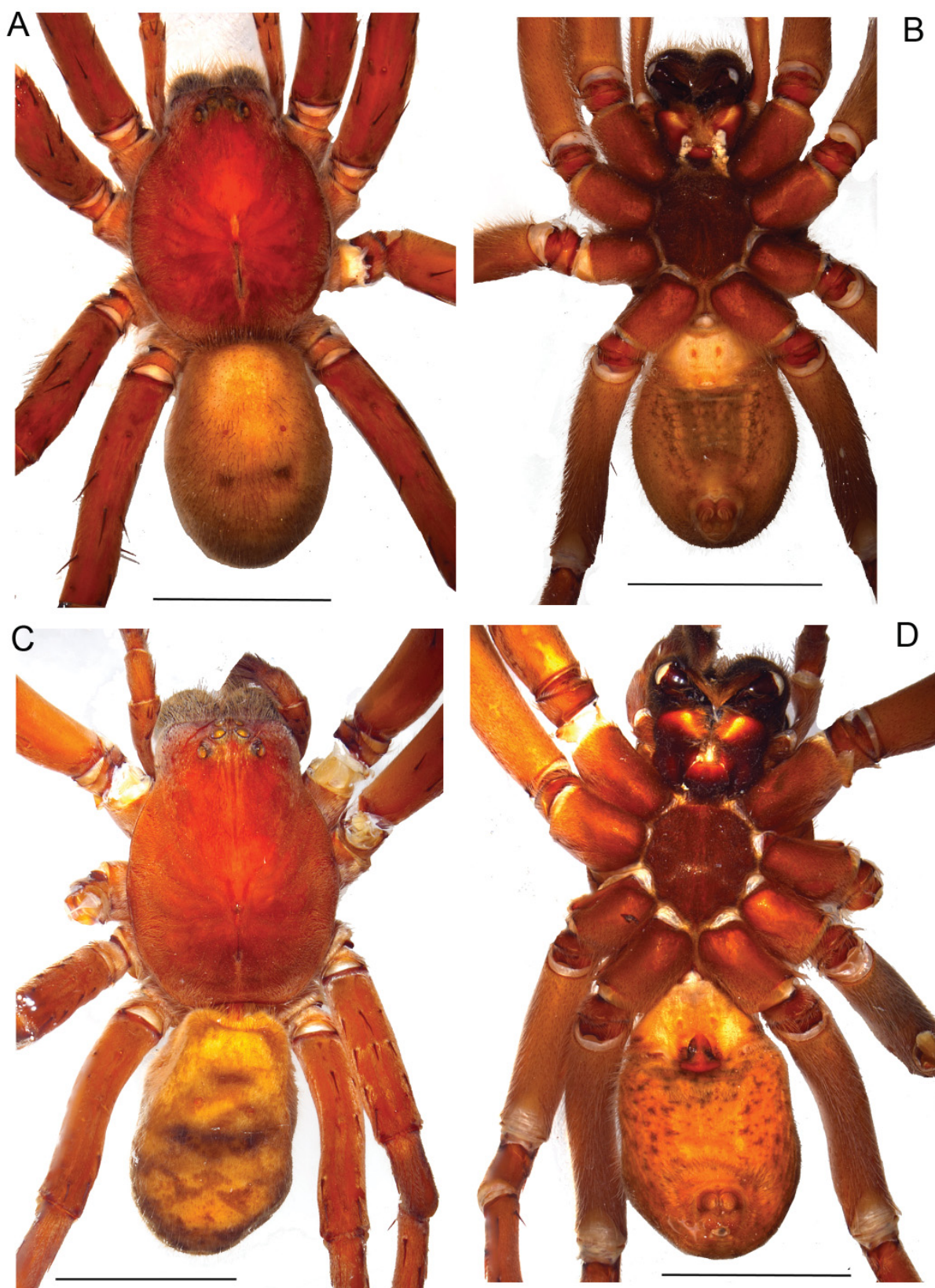
ANGOLA: *Phoneutria auricularis*, syntypes, 2 ♂♂, 2 ♀♀, 2 immature, Benguela, Chinchoso, Falkenstein coll., ZMB 2563.

#### Additional material

ANGOLA: Distrito do Lunda, Cuango, 9°10' S, 17°58' E, 1 ♂, Sep. 1972, C. Cabral coll. (MRAC 167914).

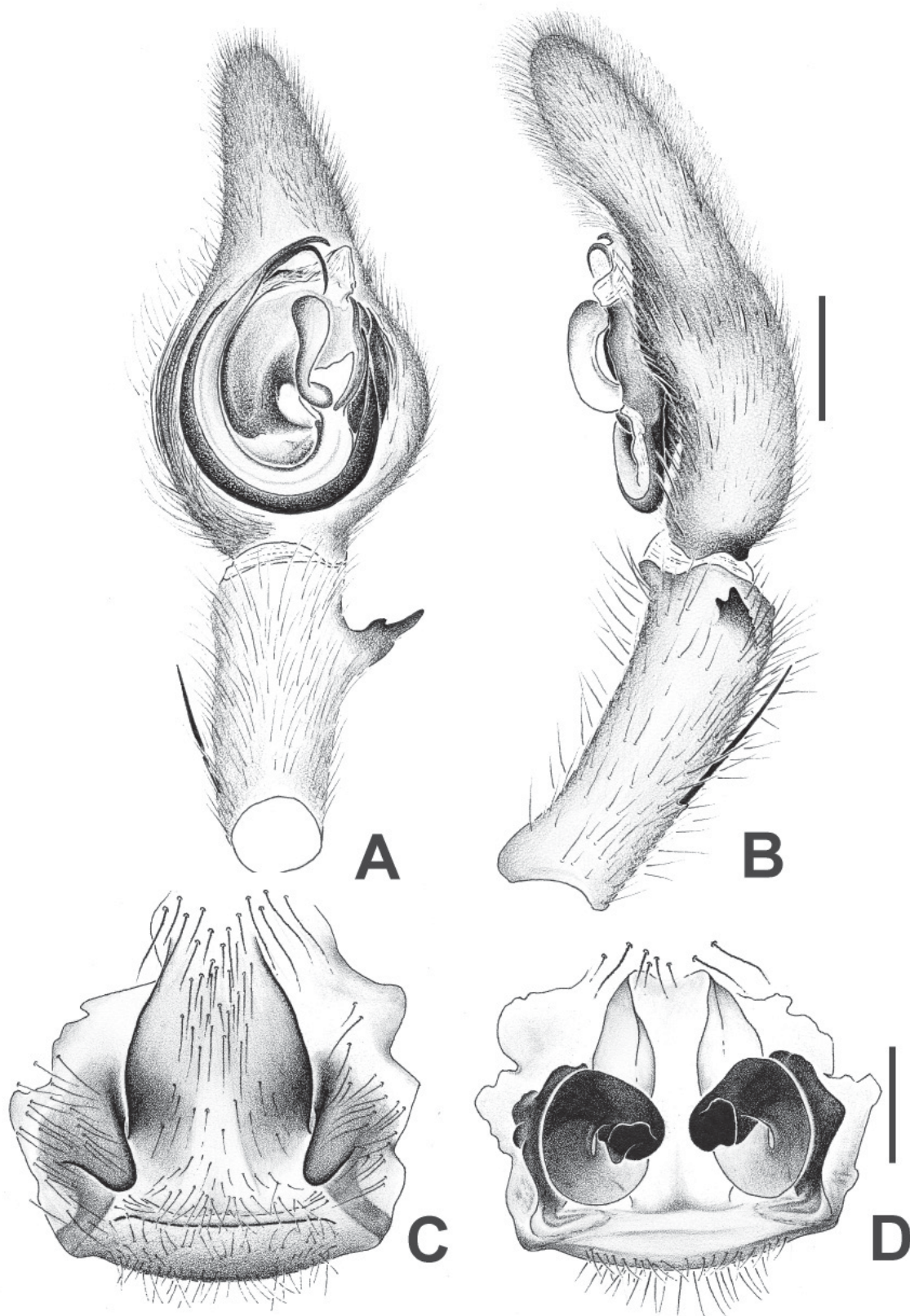
BURUNDI: Bujumbura, 3°23' S, 29°21' E, 1 ♀, 1959, G. Marlier coll. (MRAC 114120); Kanyania, 3°51' S, 29°44' E, 1 ♂, Jul. 1947, Dames de Marie coll. (MRAC 58236); 35 km SE of Kanyania, 3°51' S, 29°44' E, 1 ♂, 1948, Dames de Marie coll. (MRAC 60880).

DEMOCRATIC REPUBLIC OF THE CONGO: Congo da Lemba, 5°12' S, 13°42' E, 1 ♂, 1 ♀, 1912, R. Mayné coll. (MRAC 16303); Ekoli, terr. Opola, 0°22' S, 24°16' E, 2 ♀♀, 1952, Meews coll. (MRAC 73889, 73890); Funda Biabo, 9°50' S, 25°33' E, 1 ♂, 2 Apr. 1914, L. Charliers coll. (MRAC 25490); Katak-Kombe, 3°22' S, 24°24' E, 1 ♀, 10 Apr. 1952, Dr. Fontaine coll. (MRAC 72460); Chutes Guillaume, Kwango, 7°42' S, 17°18' E, 1 ♂, 1936, G. Schmitz coll. (MRAC 21546); Lomami, 9°24' S, 24°46' E, 1 ♀, Dr. Rodhain coll. (MRAC 25496); Lukula, 6°09' S, 26°39' E, 1 ♂, Aug. 1937, E. Darteville



**Fig. 6.** *Afroneutria erythrochelis* (Simon, 1876) comb. nov. Habitus. A. ♂, dorsal view. B. ♂, ventral view. C. ♀, dorsal view. D. ♀, ventral view. Scale bars = 10 mm.





**Fig. 7.** *Afroneutria erythrochelis* (Simon, 1876) comb. nov. — **A–B.** Male palp. **A.** Ventral view. **B.** Retrolateral view. — **C–D.** Female genitalia. **C.** Epigynum, ventral view. **D.** Vulva, dorsal view. Scale bars = 1 mm.



POLOTOW D. & JOCQUÉ R., A new genus of Afrotropical Ctenidae (Araneae)

coll. (MRAC 21487); Camp de Lukula, 6°09' S, 26°39' E, 2 ♂♂, 1911, Dr. Daniel coll. (MRAC 21539); Lukula, 6°09' S, 26°39' E, 1 ♀, 1953, Dr. Wauthier coll. (MRAC 74606); Kivu, Rugari, 2°02' S, 28°56' E, 1 ♂, 1937, R.P. Feys coll. (MRAC 21518); Kisantu, 5°08' S, 15°06' E, 1 ♀, R.F. Gillet coll. (MRAC 25488); Kisantu, 5°08' S, 15°06' E, 1 ♀, R.P. Vanderyst coll. (MRAC 25500); Tumba, 5°27' S, 14°38' E, 1 ♂, 22 Jul. 1951, M. Bequaert coll. (MRAC 69745); Boma, 5°51' S, 13°03' E, 1 ♂, 1926, H. Schouteden coll. (MRAC 25498); Boma, 5°51' S, 13°03' E, 1 ♀, Nov. 1945, J. Vrydagh coll. (MRAC 25503); Bas-Congo, Noki, 5°00' S, 14°49' E, 1 ♂, A. Cabra coll. (MRAC 21538); Leopoldville, 4°19' S, 15°19' E, 1 ♂, Feb. 1945, R. Fiasse coll. (MRAC 58214); Leopoldville, 4°19' S, 15°19' E, 1 ♀, Jul. 1954, Dr. Fontaine coll. (MRAC 78890); Matadi, 5°49' S, 13°28' E, 1 ♂, 1959, C. Crespin coll. (MRAC 114754); Popokabaka, 5°42' S, 16°34' E, 1 ♀, 1925, R.P. Vanderyst coll. (MRAC 25499); Thysville, 5°15' S, 14°52' E, 1 ♀, 1930, Dr. Vanderhaegen coll. (MRAC 25501); Kamina, 8°44' S, 25°00' E, 2 ♂♂, 1950, Buls coll. (MRAC 67365); Kapolowe, Jadotville, 10°58' S, 26°56' E, 1 ♂, 1959, J.P. Herremans coll. (MRAC 140851); Katanga, Lubumbashi, 11°40' S, 27°28' E, 2 ♀♀, Apr.–May 1966, J. Godeaux coll. (MRAC 131502); Elisabethville, 11°40' S, 27°28' E, 1 ♀, 1936, Richard coll. (MRAC 21503); Elisabethville, 11°40' S, 27°28' E, 1 ♂, Sep. 1932, Ch. Seydel coll. (MRAC 21504); Elisabethville, 11°40' S, 27°28' E, 1 ♀, 1913 (MRAC 25492); Elisabethville, 11°40' S, 27°28' E, 2 ♂♂, 25 Sep. 1959, Ch. Seydel coll. (MRAC 140491); Albertville, 5°57' S, 29°12' E, 1 ♂, 1 ♀, 1959, J. Verhoustraete coll. (MRAC 115056, 115059); Ile de M'Boko, Tanganika, Fizi, 4°18' S, 28°56' E, 1 ♂, 3 Sep. 1958, N. Leleup coll. (MRAC 113231); Mulongo, 7°50' S, 26°59' E, 1 ♂, P. Gerard coll. (MRAC 12428); Kivu, Uvira, 3°24' S, 29°08' E, 2 ♀♀, Aug. 1961, R. Kiss coll. (MRAC 120068); Kivu, Uvira, Lake Tanganika, 3°24' S, 29°08' E, 1 ♀, Aug. 1961, R. Kiss coll. (MRAC 120081); Leverville, 4°50' S, 18°44' E, 1 ♂, 1928, Mme. Tinant coll. (MRAC 25493); Dilolo, 10°41' S, 22°21' E, 1 ♂, G.F. De Witte coll. (MRAC 16308); Katanga, Kisenge, 10°42' S, 23°10' E, 2 ♀♀, Dec. 1964, A. Regnard coll. (MRAC 127561); Kwamouth, 3°11' S, 16°12' E, 1 ♀, Jun. 1913, J. Maes coll. (MRAC 25494); Libenge, 3°39' N, 18°38' E, 1 ♀, C. Leontovitch coll. (MRAC 30274); Ndua, close to Bolobo, 2°10' S, 16°14' E, 1 ♀, Dec. 1951, N'gue coll. (MRAC 72204); Kalima, 2°34' S, 26°37' E, 1 ♂, R.S. Dierexens coll. (MRAC 61614); Kasongo-Lunda, 6°28' S, 16°49' E, 1 ♀, 1939, Mme. Bequaert coll. (MRAC 2178); Maniema, Kasongo, Kahuta, 4°27' S, 26°40' E, 1 ♀, 1959, P.L.G. Benoit & Segers coll. (MRAC 140375); Bambesa, 3°26' N, 25°41' E, 1 ♀, Aug. 1938, J. Vrydagh coll. (MRAC 2790).

REPUBLIC OF CONGO: Pointe Noire, 4°47' S, 11°52' E, 1 ♀, 1938, E. Darteville coll. (MRAC 21528).

GABON: Tchibanga, 2°55' S, 10°59' E, 1 ♀, 20 Sep. 1984, A. Souche, Pauly coll. (MRAC 168750).

MALAWI: Chisasira Forest, 25 km S of Chintheche, 11°50' S, 33°53' E, 1 ♂, 27 Sep.–14 Oct. 1977, R. Jocqué coll. (MRAC 155300); Chintheche, 11°50' S, 34°10' E, 1 ♂, 1–20 Nov. 1977, R. Jocqué coll. (MRAC 155304).

NAMIBIA: Andara-Kavango, Okavango River, 18°04' S, 21°29' E, 1 ♀, Sep. 1979, M.E. Baddeley coll. (MRAC 152797).

RWANDA: Kigali, 01°57' S, 30°04' E, 1 ♀, Sep. 1961, A. Lestrade coll. (MRAC 123159).

TANZANIA: Pugu Forest, Kisarawe, near Minala, 6°52' S, 39°05' E, 1 ♂, 1969, K.M. Howell coll. (MRAC 159272); Dar-es-Salaam, UDSM Campus, 6°48' S, 39°17' E, 1 ♂, 1970–1971, K.M. Howell coll. (MRAC 159472); Dar-es-Salaam, UDSM Campus, 6°48' S, 39°17' E, 1 ♀, Sep. 1980, K.M. Howell coll. (MRAC 169162).

ZIMBABWE: Bulawayo, 20°09' S, 28°36' E, 1 ♀, Nov. 1964–Jan. 1965, S. Bucklin coll. (MRAC 128094).

### Type material not examined

MALAWI: *Ctenus johnstoni*, holotype, ♀, Zomba, Lake Nyassa, BMNH.

KENYA and DEMOCRATIC REPUBLIC OF THE CONGO: *Ctenus carsoni*, syntypes, 3 ♂♂, Mombasa and Nyanza Province (Kenya) and Kavala Island, Lake Tanganyika (Democratic Republic of the Congo), Carson coll., Pasha coll., BMNH.

GHANA: *Ctenus aureopubescens*, holotype, ♂, probably ZMB, not found.

### Description

#### Male (MRAC 60880)

Total length 29.10. Carapace 15.10 long and 11.45 wide. Eye diameter: AME 0.55, ALE 0.25, PME 0.72, PLE 0.66. Leg measurements: I: femur 16.30 / patella 6.80 / tibia 16.10 / metatarsus 15.90 / tarsus 4.40 / total 59.50; II: 14.30 / 6.30 / 12.40 / 14.10 / 4.20 / 51.30; III: 11.50 / 5.20 / 8.80 / 10.70 / 3.40 / 39.60; IV: 15.80 / 5.70 / 13.70 / 17.45 / 4.20 / 56.85. Leg formula 1423. Leg spination: tibia I and II v2-2-2-2, r1-1, p1-1; III and IV v2-2-2, r1-1, p1-1; metatarsus I, II and III v2-2-2, p1-1-1, r1-1-1; IV v1-1-1-1-2, r1-1-1, p1-1-1. Legs covered by long, golden hairs (Fig. 6A–B). Palp: cymbium elongated, almost as long as tibia; conductor rectangular, curved; median apophysis drop-shaped, curved at base (Figs 7A–B, 15C–D).

#### Female (MRAC 2178)

Total length 32.00. Carapace 16.80 long and 12.96 wide. Eye diameter: AME 0.55, ALE 0.25, PME 0.70, PLE 0.65. Leg measurements: I: femur 15.35 / patella 7.50 / tibia 13.90 / metatarsus 13.75 / tarsus 4.40 / total 54.90; II: 14.25 / 6.60 / 11.60 / 12.20 / 3.80 / 48.45; III: 11.20 / 5.50 / 8.30 / 10.20 / 3.50 / 38.70; IV: 15.00 / 6.10 / 12.20 / 15.65 / 3.90 / 52.85. Leg formula 1423. Leg spination: tibia I and II v2-2-2-2, r0, p0; III and IV v2-2-2, r1-1, p1-1; metatarsus I and II v2-2-2, r0, p0; III v2-2-2, r1-1-1, p1-1-1; IV v1-1-1-1-2, r1-1-1, p1-1-1. Legs covered by long, golden hairs (Fig. 6C–D). Epigynum: triangular median field and short lateral projections of lateral fields (Fig. 7C, 12C). Dorsal spermathecae elongated, curved, ventral spermathecae short (Fig. 7D).

### Variation

Ten ♂♂: total length 19.60–29.10, carapace length 9.50–15.10, femur I length 10.50–16.30. Ten ♀♀: total length 31.50–33.45, carapace length 14.50–18.25, femur I length 12.60–16.80.

### Distribution

Angola, Burundi, Democratic Republic of the Congo, Malawi, Namibia, Republic of Congo, Rwanda, Tanzania and Zimbabwe (Fig. 16B).

#### *Afroneutria quadrimaculata* sp. nov.

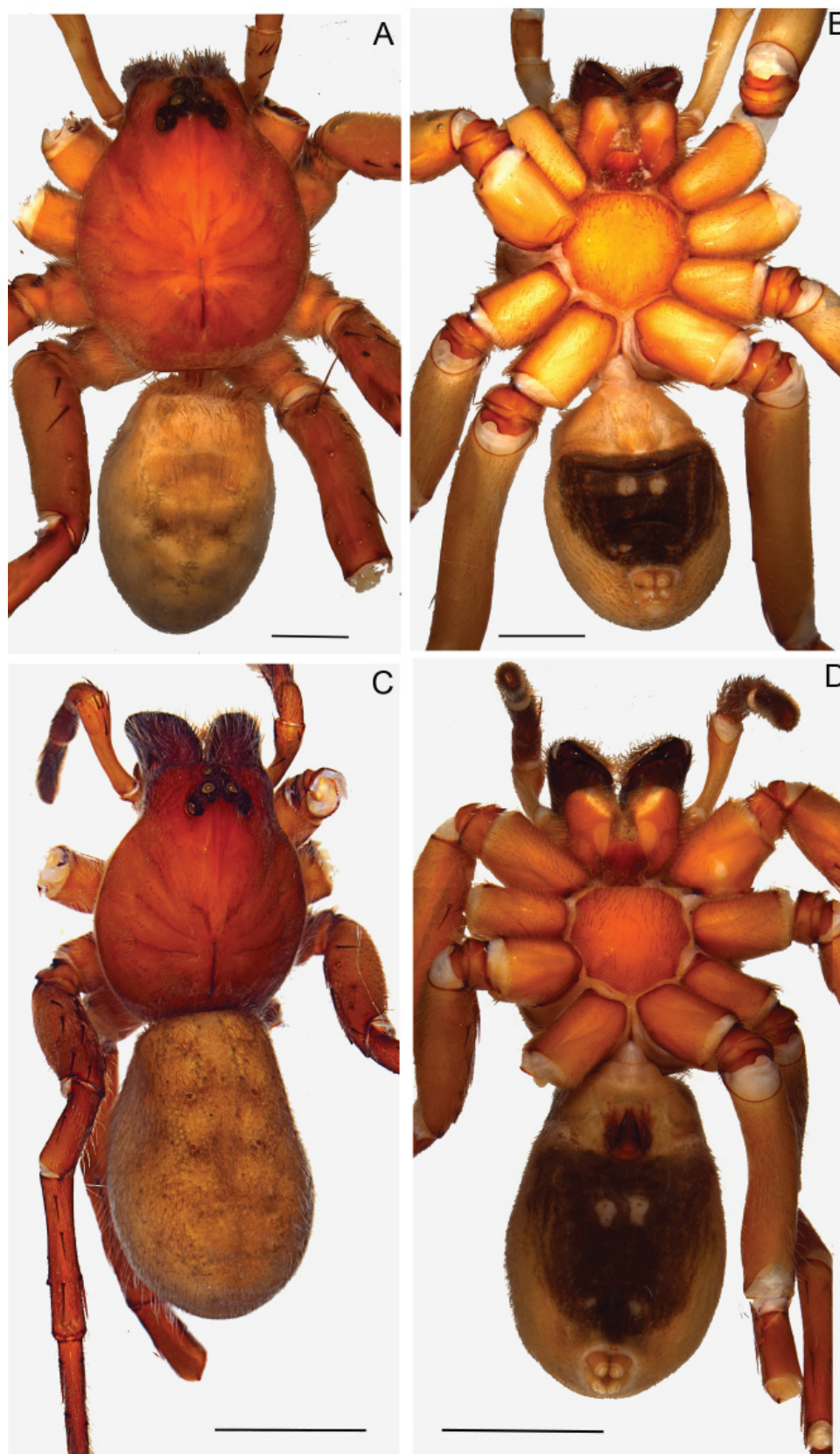
[urn:lsid:zoobank.org:act:0FF06727-624D-465E-ACA1-8A9CEFB12A50](http://urn:lsid:zoobank.org:act:0FF06727-624D-465E-ACA1-8A9CEFB12A50)

Figs 8A–D, 9A–E, 12B, 15A–B, 16A

*Ctenus velox* – Benoit 1977: 700, fig. 2a–d (misidentification).

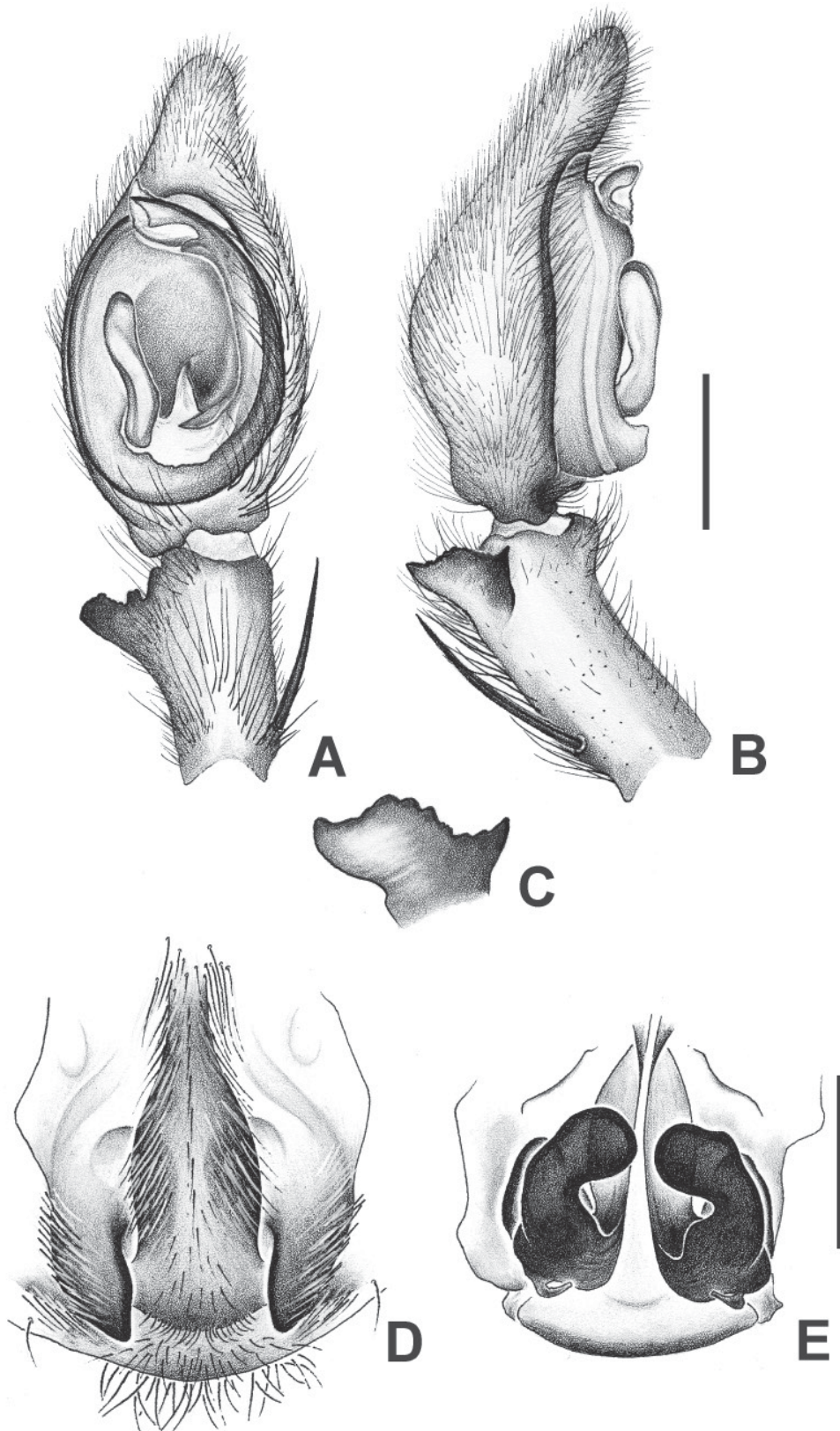
### Diagnosis

The males of *Afroneutria quadrimaculata* sp. nov. differ from those of the other species of the genus by the laminar embolus with enlarged tip and the curved, subdistal, additional projection of the embolus (Figs 9A, 15A). The females can be distinguished by the large and elongated lateral projections of the epigynum and the curved dorsal spermathecae in the vulva (Figs 9D–E, 12B).



**Fig. 8.** *Afroneutria quadrimaculata* sp. nov. Habitus. **A.** ♂, dorsal view. **B.** ♂, ventral view. **C.** ♀, dorsal view. **D.** ♀, ventral view. Scale bars = 2 mm.





**Fig. 9.** *Afroneutria quadrimaculata* sp. nov. — A–C. Male palp. A. Ventral view. B. Retrolateral view. C. Retrolateral tibial apophysis, lateral view. — D–E. Female genitalia. D. Epigynum, ventral view. E. Vulva, dorsal view. Scale bars = 2 mm.

POLOTOW D. & JOCQUÉ R., A new genus of Afrotropical Ctenidae (Araneae)

---

**Etymology**

The specific name is derived from Latin, *quadri-* (four) and *macula-* (spot), meaning to have four spots and making reference to the four white spots on the venter of the abdomen.

**Material examined**

**Holotype**

DEMOCRATIC REPUBLIC OF THE CONGO: ♂, Jadotville, Kasompi, Katanga, Oct. 1956, Z. Bacq coll. (MRAC 90554).

**Paratype**

DEMOCRATIC REPUBLIC OF THE CONGO: ♀, Kisenge, Katanga, Dec. 1964, A. Regnard coll. (MRAC 127584).

**Additional material**

DEMOCRATIC REPUBLIC OF THE CONGO: Kasai, Bibanga, 1 ♀, 1940, M. Bequaert coll. (MRAC 21542); Katanga, Kisenge, 1 ♂, 1965, Q. Regnard coll. (MRAC 128007); Katanga, Jadotville, Kasompi, 1 ♀, Oct. 1956 (MRAC 90555); 1 ♂, 6 Oct. 1956 (MRAC 90596); Katanga, Luiswishi Forest, 1 ♀, 2 Mar. 1974, F. Malaise coll. (MRAC 149210); Katanga, L'Upemba National Park, River Lufira (680 m), 2 ♂♂, 5 ♀♀, 15 Sep. 1947, G.F. de Witte coll. (MRAC 152022).

**Description**

**Male** (MRAC 128007)

Total length 14.90. Carapace 7.50 long and 5.90 wide. Eye diameter: AME 0.36, ALE 0.24, PME 0.48, PLE 0.44. Leg measurements: I: femur 9.00 / patella 3.40 / tibia 9.10 / metatarsus 8.80 / tarsus 3.30 / total 33.60; II: 8.10 / 3.30 / 7.30 / 7.80 / 3.00 / 29.50; III: 7.00 / 2.70 / 5.50 / 6.70 / 2.50 / 24.40; IV: 9.20 / 3.10 / 8.40 / 10.90 / 3.30 / 34.90. Leg formula 4123. Leg spination: tibia I and II v2-2-2-2-2, r1-1, p1-1; III and IV v2-2-2, r1-1, p1-1; metatarsus I, II and III v2-2-2, p1-1-1, r1-1-1; IV v1-1-1-1-1-2, r1-1-1, p1-1-1. Coloration: venter of abdomen black with four white spots, two behind epigastric furrow, two in front of spinnerets (Fig. 8B). Palp: cymbium slightly longer than tibia; conductor oval; median apophysis curved (Figs 9A–C, 15A–B).

**Female** (MRAC 90555)

Total length 20.10. Carapace 9.50 long and 7.40 wide. Eye diameter: AME 0.44, ALE 0.28, PME 0.56, PLE 0.52. Leg measurements: I: femur 8.70 / patella 4.40 / tibia 8.20 / metatarsus 7.60 / tarsus 2.70 / total 31.60; II: 7.80 / 4.10 / 6.80 / 6.70 / 2.70 / 28.10; III: 6.80 / 3.20 / 5.50 / 6.30 / 2.40 / 24.20; IV: 9.00 / 3.70 / 8.00 / 10.20 / 3.10 / 34.00. Leg formula 4123. Leg spination: tibia I and II v2-2-2-2-2, r0, p0; III and IV v2-2-2, r1-1, p1-1; metatarsus I and II v2-2-2, r0, p0; III v2-2-2, r1-1-1, p-1-1-1; IV v1-1-1-1-1-2, r1-1-1, p1-1-1. Coloration: as in male (Fig. 8C–D). Epigynum: with triangular median field and elongated lateral projections of lateral fields (Figs 9D, 12B). Dorsal spermathecae long, curved, ventral spermathecae short (Fig. 9E).

**Variation**

Six ♂♂: total length 15.00–14.10, carapace length 7.50–7.40, femur I length 9.00–7.70. Ten ♀♀: total length 24.20–16.50, carapace length 10.00–8.10, femur I length 8.90–7.50.

**Distribution**

Democratic Republic of the Congo (Fig. 16A).

*Afroneutria hybrida* sp. nov.

[urn:lsid:zoobank.org:act:425F304C-8F67-4DFA-A475-A3E3115CFEB8](http://urn:lsid:zoobank.org:act:425F304C-8F67-4DFA-A475-A3E3115CFEB8)

Figs 10A–B, 11A–C, 13C–D, 16B

**Diagnosis**

The males of *Afroneutria hybrida* sp. nov. differ from those of the other species of the genus by the laminar embolus with acute tip, the short additional subdistal projection of the embolus and the truncated RTA (Figs 11A–B, 13C–D).

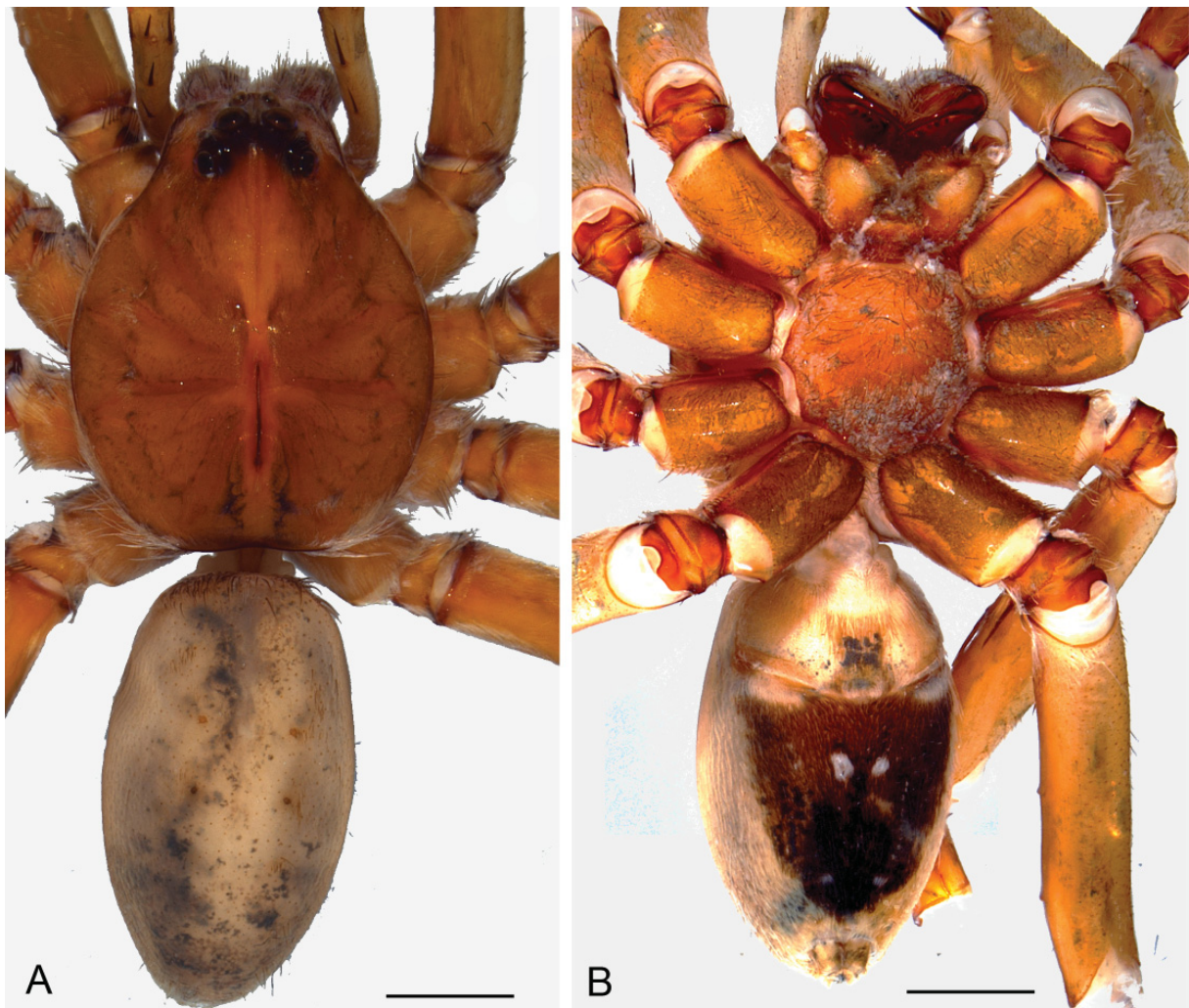
**Etymology**

The specific name is derived from Latin *ibrida*, meaning a mongrel, specifically the offspring of a tame sow and a wild boar, and making reference to the similarity of the morphology to that of *Afroneutria velox* comb. nov. and *A. quadrimaculata* sp. nov.

**Material examined**

**Holotype**

TANZANIA: ♂, Kambai Forest Reserve, Muheza District, Tanga Region, 4°59' S, 38°41' E, ZMUC.



**Fig. 10.** *Afroneutria hybrida* sp. nov. Habitus, ♂. **A.** Dorsal view. **B.** Ventral view. Scale bars = 2 mm.



**Paratype**

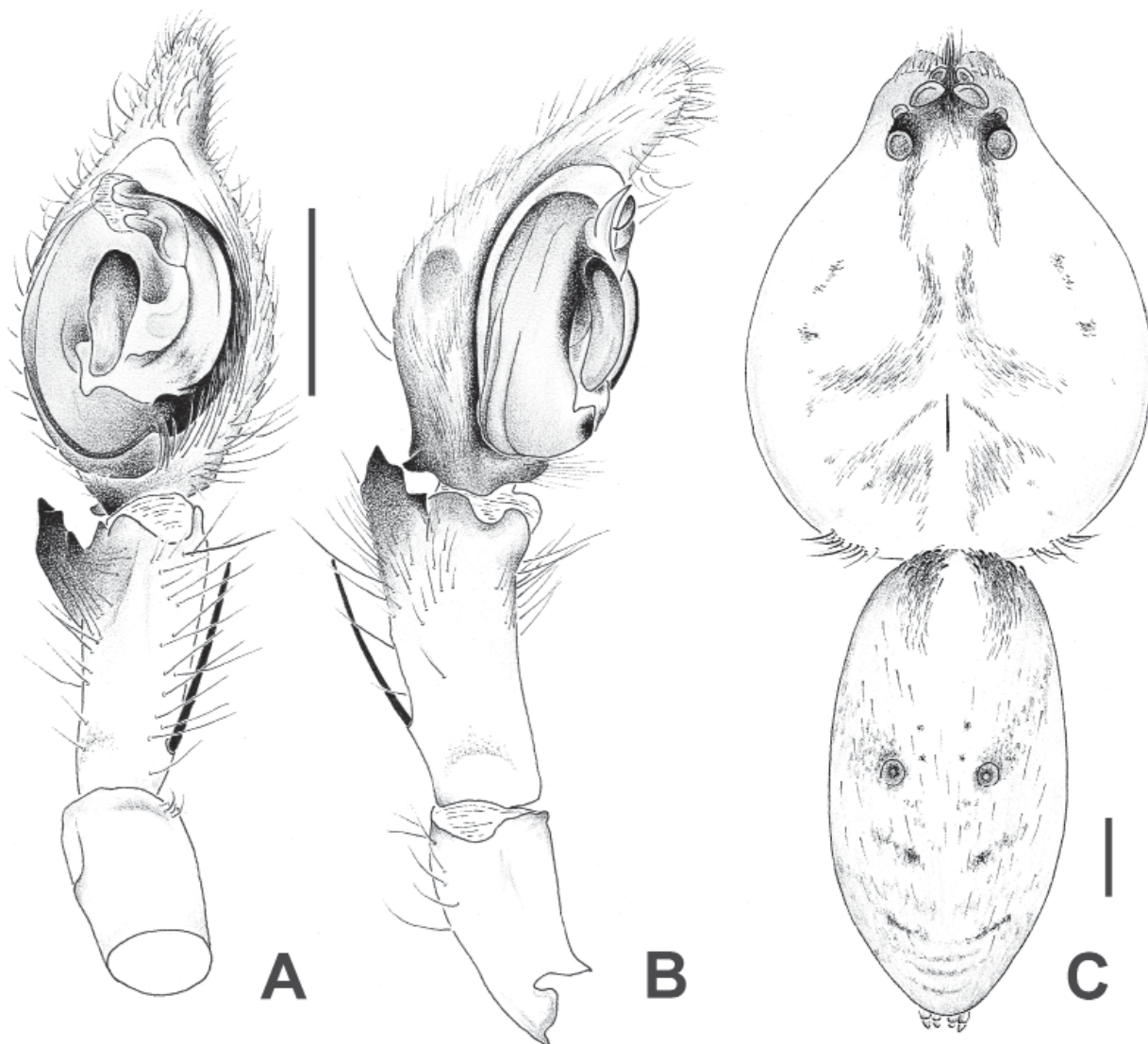
TANZANIA: 1 ♂, same collection data as holotype, ZMUC.

**Additional material**

None.

**Description (holotype)**

Total length 12.40. Carapace 6.50 long and 5.50 wide. Eye diameter: AME 0.32, ALE 0.19, PME 0.60, PLE 0.56. Leg measurements: I: femur 9.70 / patella 3.20 / tibia 10.60 / metatarsus 11.40 / tarsus 4.70 / total 39.60; II: 8.70 / 3.10 / 8.90 / 9.50 / 3.50 / 33.70; III: 7.50 / 2.40 / 6.70 / 7.70 / 3.10 / 27.40; IV: 10.20 / 2.60 / 10.00 / 13.20 / 4.30 / 40.30. Leg formula 4123. Leg spination: tibia I and II v2-2-2-2-2, r1-1, p1-1; III and IV v2-2-2, r1-1, p1-1; metatarsus I, II and III v2-2-2, p1-1-1, r1-1-1; IV v1-1-1-1-1-2, r1-1-1, p1-1-1. Coloration: venter of abdomen black, with two white spots placed transversely behind epigastric

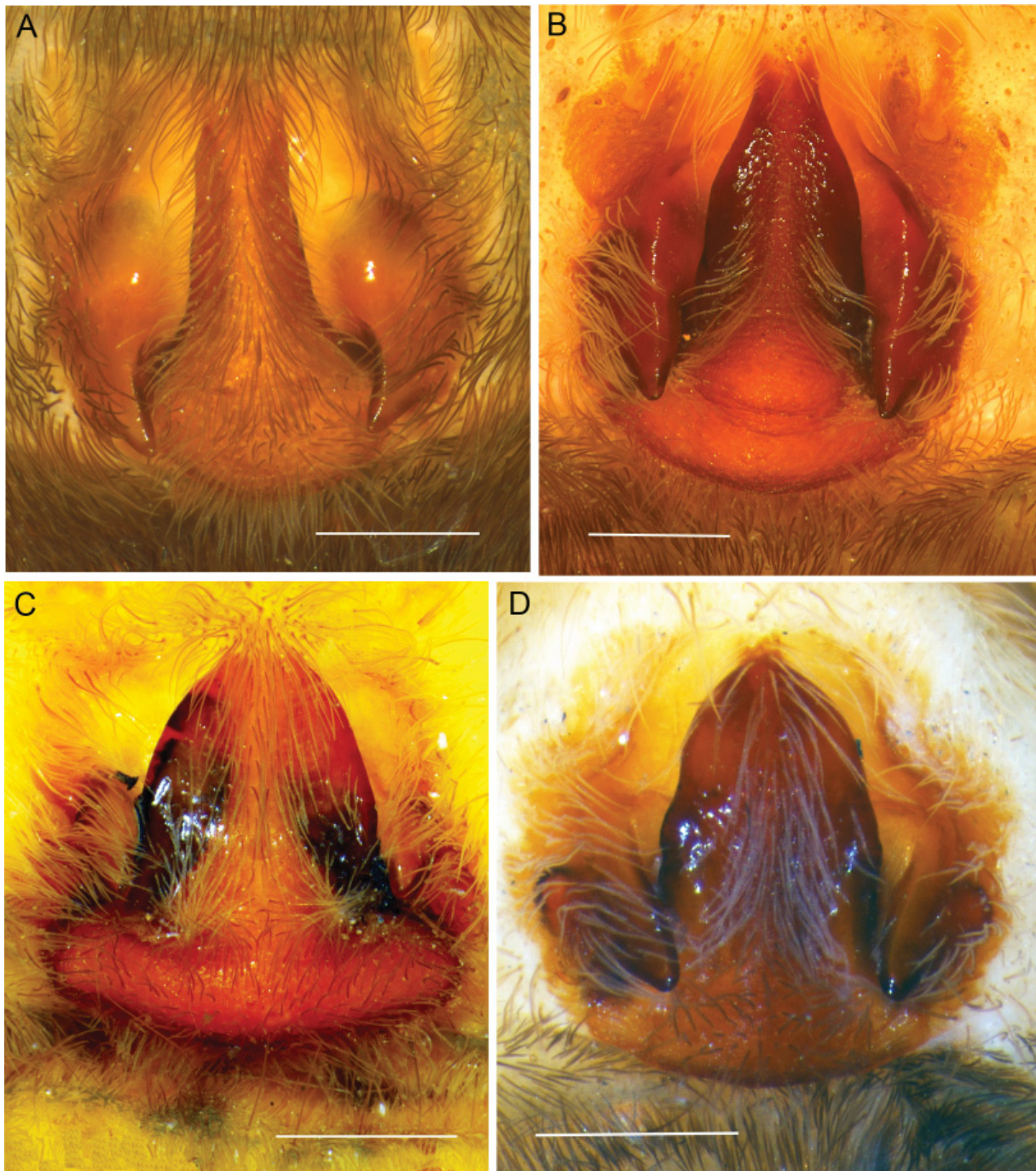


**Fig. 11.** *Afroneutria hybrida* sp. nov., ♂. **A.** Palp, ventral view. **B.** Palp, retrolateral view. **C.** Habitus, dorsal view. Scale bars = 1 mm.

furrow (Fig. 10B). Palp: cymbium elongated, longer than tibia; conductor oval; median apophysis straight (Figs 11A–B, 13C–D).

### Distribution

Tanzania (Fig. 16B).



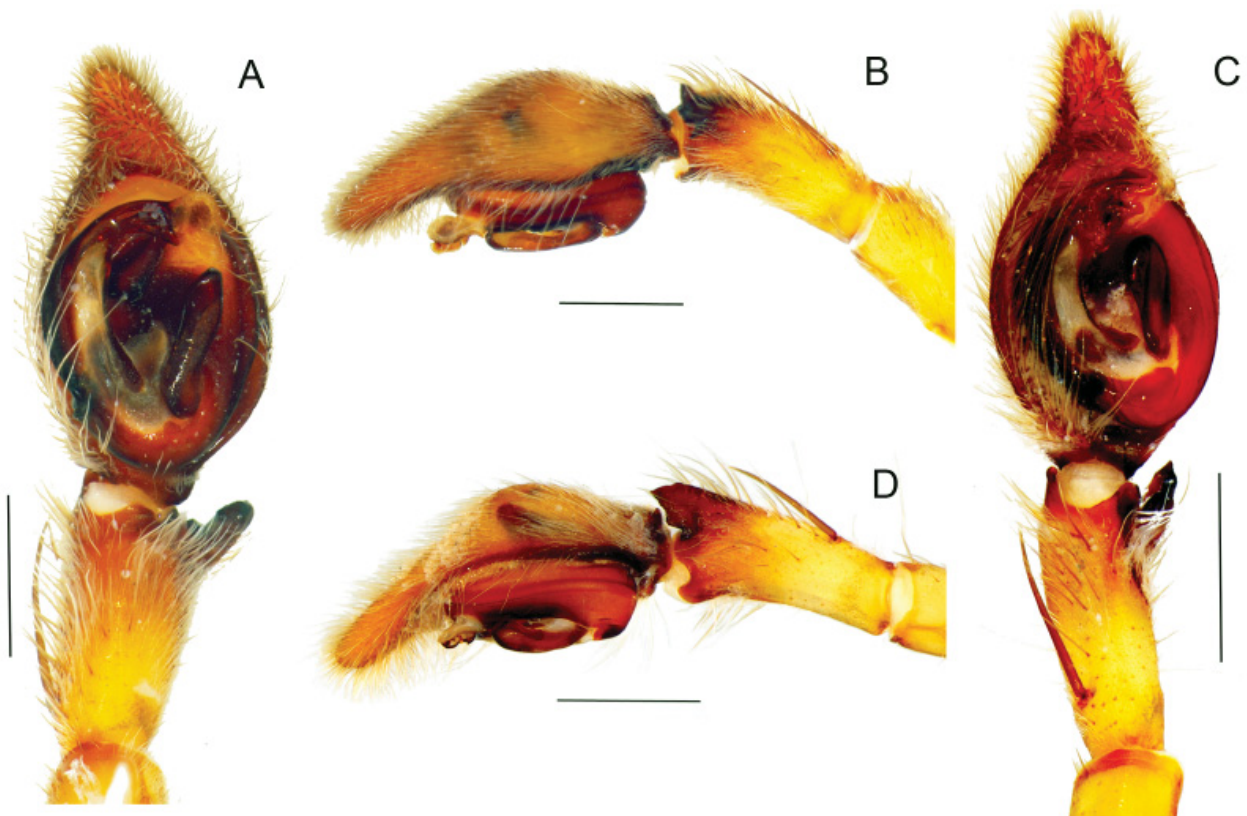
**Fig. 12.** Epigynum, ventral view. **A.** *Afroneutria immortalis* (Arts, 1912) comb. nov. **B.** *Afroneutria quadrimaculata* sp. nov. **C.** *Afroneutria erythrochelis* (Simon, 1876) comb. nov. **D.** *Afroneutria velox* (Blackwall, 1865) comb. nov. Scale bars = 1 mm.



## Discussion

*Afroneutria* gen. nov. is proposed based on the results of the cladistic analysis presented in Polotow & Brescovit (2014). In that analysis, three of the species treated here were used: *Afroneutria erythrochelis* comb. nov., *A. immortalis* comb. nov. and *A. velox* comb. nov. The clade appeared as sister-group of a clade formed by *Ctenus sinuatipes* F.O. Pickard-Cambridge, 1897 and *C. curvipes* (Keyserling, 1881), both from Central America (Polotow & Brescovit 2014: fig. 3). The *Afroneutria* clade is supported by a unique elongated projection in the apical area of the embolus (Polotow & Brescovit 2014: character 25), also present in the species described here, *A. quadrimaculata* sp. nov. and *A. hybrida* sp. nov.

The Afrotropical region houses 123 species of Ctenidae, distributed in eight genera: *Africactenus* Hyatt, 1954, *Anahita* Karsch, 1879, *Apolania* Simon, 1898, *Caloctenus* Keyserling, 1877, *Ctenus* Walckenaer, 1805, *Petaloctenus* Jocqué & Steyn, 1997, *Thoriosa* Simon, 1910 and *Trogloctenus* Lessert, 1935 (Platnick 2015). *Viridasius* Simon, 1889 and *Vulsor* Simon, 1889 are excluded from the count, because they belong to another family according to Polotow *et al.* (in press). *Ctenus* contains the largest number of species (more than 70). The recent redescription of the Neotropical type species, *Ctenus dubius*, by Brescovit & Simó (2007) and cladistic analyses (Silva 2003; Polotow & Brescovit 2009) indicated that the genus is polyphyletic as currently delimited. Thus, the description of *Afroneutria* gen. nov. is helping to redefine Ctenidae and the polyphyletic *Ctenus* in the Afrotropical region.

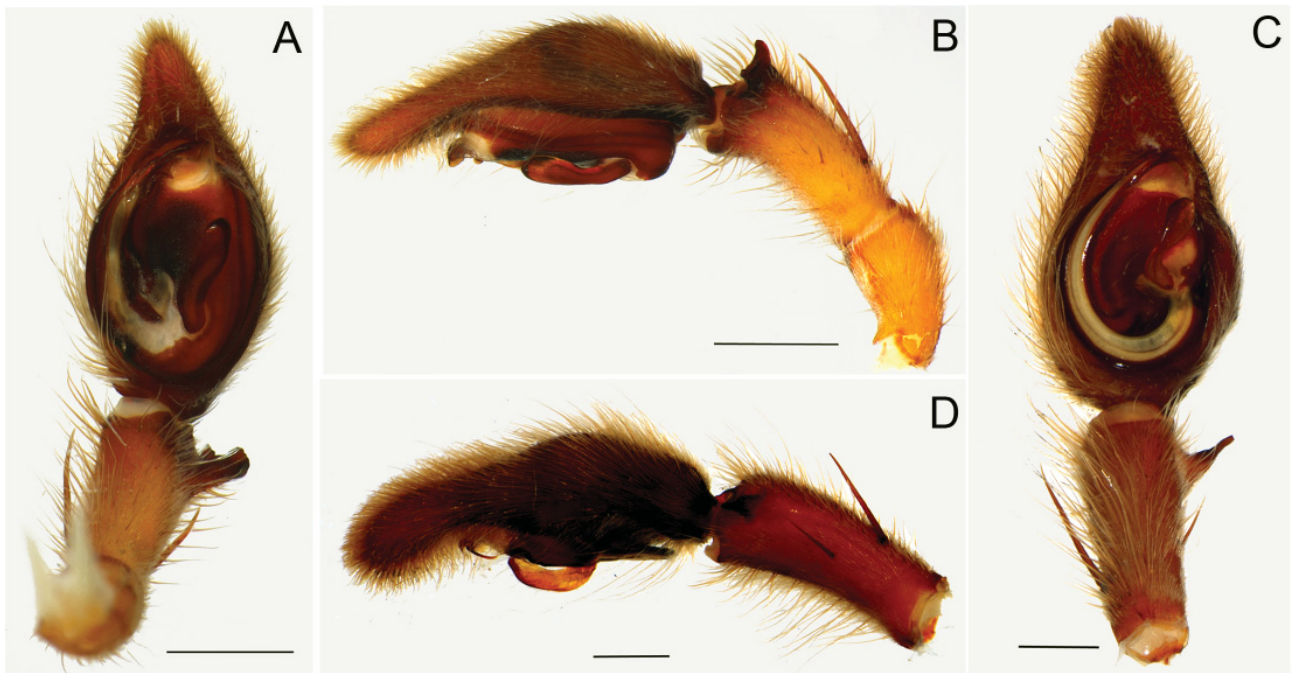


**Fig. 13.** Male palp. — **A–B.** *Afroneutria velox* (Blackwall, 1865) comb. nov. **A.** Ventral view. **B.** Retrolateral view. — **C–D.** *Afroneutria hybrida* sp. nov. **C.** Ventral view. **D.** Retrolateral view. Scale bars = 1 mm.

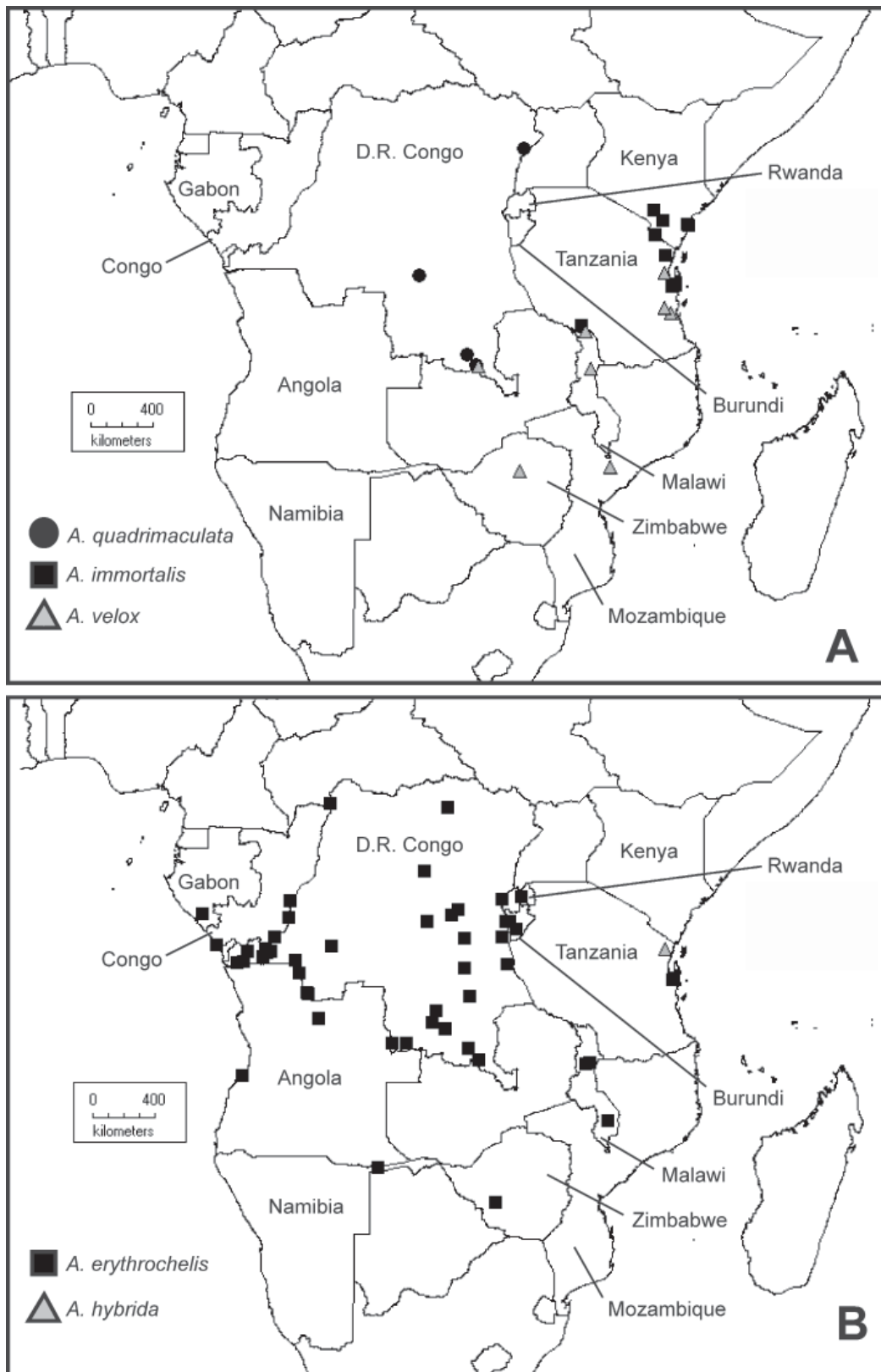




**Fig. 14.** *Afroneutria immortalis* (Arts, 1912) comb. nov. Male palp. **A.** Ventral view. **B.** Retrolateral view. Scale bars = 1 mm.



**Fig. 15.** Male palp. — **A–B.** *Afroneutria quadrimaculata* sp. nov. **A.** Ventral view. **B.** Retrolateral view. — **C–D.** *Afroneutria erythrochelis* (Simon, 1876) comb. nov. **C.** Ventral view. **D.** Retrolateral view. Scale bars = 1 mm.



**Fig. 16.** Distribution records of species of *Afroneutria* gen. nov. on the African continent. **A.** Distribution of *A. velox* (Blackwall, 1865) comb. nov., *A. immortalis* (Arts, 1912) comb. nov. and *A. quadrimaculata* sp. nov. **B.** Distribution of *A. erythrochelis* (Simon, 1876) comb. nov. and *A. hybrida* sp. nov.

## Acknowledgments

Financial support for this study was provided by the Fundação de Amparo a Pesquisa do Estado de São Paulo - FAPESP (06/55230-7, doctorate fellowship) and the Belgian National Focal Point to the Global Taxonomy Initiative at the Royal Museum for Central Africa, Tervuren. We would like to thank all curators who kindly lent critical specimens for this research.

## References

- Arts L. des. 1912. Zusammenstellung der afrikanischen Arten der Gattung *Ctenus*. *Jahrbuch der Hamburgischen Wissenschaftlichen Anstalten* 29 (2): 183–218. <http://www.biodiversitylibrary.org/item/94918#page/201/mode/1up> [accessed 19 Mar. 2015]
- Benoit P.L.G. 1977. Etudes sur les Ctenidae africains (Araneae) V. Gen. *Ctenus* Walck. – groupe *erythrochelis*. *Revue zoologique africaine* 91: 698–703.
- Blackwall J. 1865. Descriptions of recently discovered species and characters of a new genus of Araneidea from the East of Central Africa. *The Annals and Magazine of Natural History*, 3<sup>rd</sup> Series, 16: 336–352.
- Bösenberg W. & Lenz H. 1895. Ostafrikanische Spinnen gesammelt von Herrn Dr. F. Stuhlmann in den Jahren 1888 und 1889. *Jahrbuch der Hamburgischen Wissenschaftlichen Anstalten* 12 (2): 27–51. <http://www.biodiversitylibrary.org/item/101782#page/397/mode/1up> [accessed 19 Mar. 2015]
- Brescovit A.D. & Simó M. 2007. On the Brazilian Atlantic Forest species of the spider genus *Ctenus* Walckenaer, with the description of a neotype for *C. dubius* Walckenaer (Araneae, Ctenidae, Cteninae). *Bulletin of the British Arachnological Society* 14: 1–17. <http://dx.doi.org/10.13156/arac.2007.14.1.1>
- Hyatt K.H. 1954. The African spiders of the family Ctenidae in the collections of the British Museum (Natural History). *The Annals and Magazine of Natural History*, 12<sup>th</sup> Series, 7: 877–894. <http://dx.doi.org/10.1080/00222935408651809>
- Karsch F. 1879. West-afrikanische Arachniden, gesammelt von Herrn Stabsarzt Dr. Falkenstein. *Zeitschrift für die gesammten Naturwissenschaften* 52: 329–373.
- Lessert R. de. 1915. Arachnides de l'Ouganda et de l'Afrique orientale allemande (voyage du Dr J. Carl dans la region des lacs de l'Afrique centrale). *Revue suisse de zoologie* 23: 1–80. <http://www.biodiversitylibrary.org/item/40642#page/11/mode/1up> [accessed 19 Mar. 2015]
- Pickard-Cambridge F.O. 1898. On the cteniform spiders of Africa, Arabia and Syria. *Proceedings of the Zoological Society of London* 1898: 13–32. <http://www.biodiversitylibrary.org/item/97095#page/47/mode/1up> [accessed 19 Mar. 2015]
- Polotow D. & Brescovit A.D. 2009. Revision and cladistic analysis of *Isoctenus* and description of a new neotropical genus (Araneae, Ctenidae, Cteninae). *Zoological Journal of the Linnean Society* 155: 583–614. <http://dx.doi.org/10.1111/j.1096-3642.2008.00452.x>
- Polotow D. & Brescovit A.D. 2014. Phylogenetic analysis of the tropical wolf spider subfamily Cteninae (Arachnida, Araneae, Ctenidae). *Zoological Journal of the Linnean Society* 170: 333–361. <http://dx.doi.org/10.1111/zoj.12101>
- Polotow D., Carmichael A. & Griswold C.E. In press. Total evidence analysis of the phylogenetic relationship of Lycosoidea spiders (Araneae, Entelegynae). *Invertebrate Systematics*.
- Ramírez M.J. 2014. The morphology and phylogeny of dionychan spiders (Araneae, Araneomorphae). *Bulletin of the American Museum of Natural History* 390: 1–374. <http://dx.doi.org/10.5531/sd.sp.5>



POLOTOW D. & JOCQUÉ R., A new genus of Afrotropical Ctenidae (Araneae)

---

- Silva D. 2003. Higher-level relationships of the spider family Ctenidae (Araneae: Ctenoidea). *Bulletin of the American Museum of Natural History* 274: 1–86. [http://dx.doi.org/10.1206/0003-0090\(2003\)274<0001:HLROTS>2.0.CO;2](http://dx.doi.org/10.1206/0003-0090(2003)274<0001:HLROTS>2.0.CO;2)
- Simó M. & Brescovit A.D. 2001. Revision and cladistic analysis of the Neotropical spider genus *Phoneutria* Perty, 1833 (Araneae, Ctenidae), with notes on related Cteninae. *Bulletin of the British Arachnological Society* 12 (2): 67–82.
- Simon E. 1876. Étude sur le arachnides du Congo. *Bulletin de la Société zoologique de France* 1: 215–224. <http://www.biodiversitylibrary.org/item/110342#page/22/mode/1up> [accessed 19 Mar. 2015]
- Simon E. 1897. *Histoire Naturelle des Araignées*. Librairie encyclopédique de Roret, Paris. <http://dx.doi.org/10.5962/bhl.title.51973> [accessed 19 Mar. 2015]
- Strand E. 1906. Tropisch-afrikanische Spinnen des Kgl. Naturalien-kabinetts in Stuttgart. *Jahreshefte des Vereins für Vaterländische Naturkunde in Württemberg* 62: 13–103. <http://www.biodiversitylibrary.org/item/33679#page/131/mode/1up> [accessed 19 Mar. 2015]
- Strand E. 1907. Afrikanische Spinnen (exkl. Aviculariiden), hauptsächlich aus dem Kapland. *Zoologische Jahrbücher, Abteilung für Systematik* 25: 557–731. <http://www.biodiversitylibrary.org/item/38161#page/569/mode/1up> [accessed 19 Mar. 2015]
- World Spider Catalog. 2014. World Spider Catalog, version 15.5. Natural History Museum Bern [online]. Available from <http://wsc.nmbe.ch> [accessed 19 Mar. 2015]

*Manuscript received: 22 December 2014*

*Manuscript accepted: 2 March 2015*

*Published on: 28 April 2015*

*Topic editor: Koen Martens*

*Desk editor: Danny Eibye-Jacobsen*

Printed versions of all papers are also deposited in the libraries of the institutes that are members of the EJT consortium: Muséum national d'Histoire naturelle, Paris, France; Botanic Garden Meise, Belgium; Royal Museum for Central Africa, Tervuren, Belgium; Natural History Museum, London, United Kingdom; Royal Belgian Institute of Natural Sciences, Brussels, Belgium; Natural History Museum of Denmark, Copenhagen, Denmark.

# ZOBODAT - [www.zobodat.at](http://www.zobodat.at)

Zoologisch-Botanische Datenbank/Zoological-Botanical Database

Digitale Literatur/Digital Literature

Zeitschrift/Journal: [European Journal of Taxonomy](#)

Jahr/Year: 2015

Band/Volume: [0121](#)

Autor(en)/Author(s): Polotow Daniele, Jocque Rudy

Artikel/Article: [Afroneutria, a new spider genus of Afrotropical Ctenidae \(Arachnida, Araneae\) 1-27](#)