



This work is licensed under a Creative Commons Attribution 3.0 License.

## Research article

[urn:lsid:zoobank.org:pub:DCD171EC-6709-4495-85B3-6430E85C529E](http://urn:lsid:zoobank.org:pub:DCD171EC-6709-4495-85B3-6430E85C529E)

# New records of *Dasyhelea* Kieffer, 1911 from Sweden, with descriptions of two new species (Diptera: Ceratopogonidae)

Jonas STRANDBERG<sup>1,2,3,\*</sup> & Kjell Arne JOHANSON<sup>1,4</sup>

<sup>1</sup> Swedish Museum of Natural History, Department of Zoology, Box 50007,  
104 05 Stockholm, Sweden

<sup>2</sup> Stockholm University, Department of Zoology, 106 91 Stockholm, Sweden

\* Corresponding author: [jonas.strandberg@nrm.se](mailto:jonas.strandberg@nrm.se)

<sup>3</sup> [urn:lsid:zoobank.org:author:EDE10C9E-737E-4F88-9FFF-219BDC80F8BA](http://urn:lsid:zoobank.org:author:EDE10C9E-737E-4F88-9FFF-219BDC80F8BA)

<sup>4</sup> [urn:lsid:zoobank.org:author:F2A38CF6-59EB-4F88-BFEB-761DBEA7B01A](http://urn:lsid:zoobank.org:author:F2A38CF6-59EB-4F88-BFEB-761DBEA7B01A)

**Abstract.** Based on intensive collecting from various sites in Sweden, the genus *Dasyhelea* Kieffer, 1911 was reviewed and the number of species now known from the country increased from five to twenty. Among the new species recorded there are two species described as new to science, *D. dominiakae* sp. nov. and *D. gothlandica* sp. nov., both in the subgenus *Dicryptoscena* Enderlein, 1936. The following subgenera are now documented from Sweden: *Dasyhelea*, *Dicryptoscena*, *Pseudoculicoides* Malloch, 1915, *Prokempia* Kieffer, 1913 and *Sebessia* Remm, 1979, the two latter subgenera being reported for the first time.

**Keywords.** Biting midges, taxonomy, systematics, new species, Malaise trap.

Strandberg J. & Johanson K.A. 2015. New records of *Dasyhelea* Kieffer, 1911 from Sweden, with descriptions of two new species (Diptera: Ceratopogonidae). *European Journal of Taxonomy* 131: 1–22. <http://dx.doi.org/10.5852/ejt.2015.131>

## Introduction

The genus *Dasyhelea* Kieffer, 1911 is classified in the subfamily Dasyheleinae Lenz, 1934 and is cosmopolitan in distribution. More than 600 *Dasyhelea* species are known, representing one-tenth of all described Ceratopogonidae species in the World (Borkent 2015). The highest diversity is described from large countries in the northern hemisphere, i.e., China, USA and Russia (Borkent 2015). The immature stages of *Dasyhelea* inhabit a wide range of moist and terrestrial habitats, like peat bogs (Domniak & Szadziewski 2006), rockpools (Wirth 1978), plants of *Nepenthes* Linnaeus (Wirth & Beaver 1979), tree sap (Domniak 2005) and in mushrooms (Graves & Graves 1985). The short-lived adults (Zilahi-Sebess 1931) are often found in or around the vegetation near the breeding sites (Waugh & Wirth 1976). The structure of the mouthparts in both sexes is similar, i.e., reduction of both mandibles and maxillae (Glukhova 1981), and both males and females feed on nectar and honeydew and according to Wirth (1956) they can act as pollinators of plants such as rubber trees (*Hevea brasiliensis* (Willd. ex A.D. Juss.)).

The most recently described ceratopogonid species from Sweden, which are still valid, are *Forcipomyia squamigera* Kieffer, 1916 and *Bezzia pilipennis* Lundström, 1916. Reports thereafter added more species

records for the country, resulting in a record list of approximately one hundred species of Ceratopogonidae for Sweden (Rehnberg & Brodin 2010; Nielsen *et al.* 2010; Szadziewski *et al.* 2012). This may be compared to 184 species in Estonia, 211 in Poland and 256 in Germany (Szadziewski *et al.* 2012), which indicates that Sweden might have been undersampled historically compared to some other countries. Efforts were therefore made in order to more carefully examine the Swedish diversity using recently trapped material from various sites. The Swedish *Dasyhelea* include five species previously recorded from Sweden: *D. pallidiventris* (Goetghebuer, 1931), *D. corinneae* Gosseries, 1991, *D. turficola* Kieffer, 1925, *D. modesta* (Winnertz, 1852) and *D. notata* Goetghebuer, 1920 (Dominiak & Szadziewski 2010). With this report the number of *Dasyhelea* species in Sweden increases to 20, a low number compared to the more than 60 species recorded from the rest of Europe (Szadziewski *et al.* 2012).

## Material & Methods

The specimens in this study were collected from Djäkabygd's Bokbacke during the summer of 2005, from Limhamns kalkbrott (limestone quarry) during the summer of 2009, and various other localities in Sweden during the spring and summer of 2011. Specimens were collected in Malaise traps and in sweep nets. At the lab they were stored in 80% ethanol in deep freezers. After sorting and preliminary identification, the whole body was cleared using Proteinase K as part of DNA extraction and sequenced for mitochondrial cytochrome I (COI) according to the methods described in Strandberg & Johanson (2010). The COI sequences were used to associate males and females using MEGA 5.2.2 (Tamura *et al.* 2011), applying the settings in Stur & Borkent (2014). The head, wings and abdomen/genitals from the thorax and one leg from each leg pair were mounted under separate cover slips on microscope slides using Euparal as permanent mounts. Specimens from Limhamns kalkbrott and Bunkeflostrand are stored at the Museum of Zoology, Lund University, Sweden (MZLU) while the rest are deposited at the Department of Zoology, Swedish Museum of Natural History (NHRS).

In the descriptions, specimens were measured for each character and ratios and measurements of the antennae (AR), palpi (PR<sub>(III)</sub>), wings and costal vein (CR) were obtained following the methods described by Dominiak (2012). Measurements are given for the holotype as well as the range of variation in each character for the paratypes (n = number of specimens examined).

## Results

Class Insecta Linnaeus, 1758  
Order Diptera Linnaeus, 1758  
Family Ceratopogonidae Newman, 1834  
Subfamily Dasyheleinae Lenz, 1934

Genus *Dasyhelea* Kieffer, 1911

*Dasyhelea* Kieffer, 1911: 5. Type species: *Dasyhelea halophila* Kieffer, 1911: 5 (by monotypy).

Subgenus *Dasyhelea*

*Dasyhelea (Dasyhelea) bensoni* Edwards, 1933

*Dasyhelea bensoni* Edwards, 1933: 91.

*Dasyhelea vernalis* Remm, 1979: 56.

## New record

SWEDEN: 2 ♂♂, Gällivare, Muddus National Park, Lake Muddus, 67.030916° N, 20.254950° E, 418 masl, loc. 036-01, Malaise trap, 7–20 Jun. 2011, leg. H. Gustafsson (NHRS).

STRANDBERG J. & JOHANSON K.A., New records of *Dasyhelea* from Sweden

---

**Distribution**

Great Britain, Norway, Estonia, Romania, Russia (Amur Oblast, Yakutia) (Dominiak & Szadziewski 2010).

**Biology**

Specimens were collected on mire close to a lake during mid June. Previously *D. bensoni* has been collected from the end of May to mid July (Edwards 1933; Remm 1979).

***Dasyhelea (Dasyhelea) bilineata* Goetghebuer, 1920**

*Dasyhelea bilineata* Goetghebuer, 1920: 45.

*Dasyhelea insignipalpis* Kieffer, 1925a: 62 (as *D. versicolor* var. *insignipalpis*).

*Tetrachora saxicola* Edwards, 1929: 426.

*Dasyhelea geleiana* Zilahi-Sebess, 1931: 321.

*Dasyhelea montana* Zilahi-Sebess, 1940: 48 (as *D. dufouri* var. *montana*).

*Dasyhelea lithotelmatica* Strenzke in Thienemann, 1950: 178.

*Dasyhelea tecticola* Remmert, 1953: 334.

*Culicoides dieuzeidei* Vaillant, 1957: 265.

*Dasyhelea karelica* Glukhova & Brodskaya, 1997: 443.

**New record**

SWEDEN: 1 ♂, 1 ♀, Malmö, Bunkeflostrand, Malaise trap, 16 Jul.–1 Aug. 2009, leg. B.W. Svensson (MZLU).

**Distribution**

Norway, Finland, Russia, Estonia, Great Britain, Ireland, Belgium, Germany, Poland, Czech Republic, Slovakia, France, Switzerland, Austria, Italy, Croatia, Hungary, Romania, Ukraine (Crimea), Bulgaria, Spain, Gibraltar, Algeria, Turkey (Dominiak & Szadziewski 2010).

**Biology**

The specimens were collected in an area with shore meadows on the west coast in the south of Sweden. The larva inhabits shallow water bodies; both natural and artificial and preimaginal stages are very tolerant of desiccation and temperature fluctuations (Zilahi-Sebess 1931; Valkanov 1941; Disney 1975).

**Remarks**

The male keys out as *D. bilineata* in Dominiak (2012). The associated female has the subgenital plate with broad lateral processes and a more hearth-shaped notum in contrast to the isosceles triangular-shaped notum of *D. bilineata* shown in Dominiak (2012).

***Dasyhelea (Dasyhelea) caesia* Remm, 1993**

*Dasyhelea caesia* Remm, 1993: 193.

*Dasyhelea lugensis* Brodskaya, 1995: 9.

**New record**

SWEDEN: 1 ♂, Haninge, Tyresta National Park, Löpanträsk, 59.182483° N, 18.303100° E, 40 masl, loc. 025-07, Malaise trap, 19 Jul.–2 Aug. 2011, leg. J. Strandberg (NHRS).

### Distribution

Russia (Leningrad Oblast, Yakutia), Poland (Dominiak & Szadziewski 2010).

### Biology

The specimen was collected in a marsh situated between two lakes with water flowing through. Last instar larvae and pupae of *Dasyhelea caesia* have previously been collected from a small body of water and the littoral zone of lakes in Russia during July (Brodskaia 1995; Przhiboro 2005).

#### *Dasyhelea (Dasyhelea) malleola* Remm, 1962

*Dasyhelea malleolus* Remm, 1962: 119.

### New records

SWEDEN: 2 ♂♂, 1 ♀, Gällivare, Muddus National Park, Lake Muddus, 67.030916° N, 20.254950° E, 418 masl, loc. 036-01, Malaise trap, 7–20 Jun. 2011, leg. H. Gustafsson (NHRS); 1 ♂, 3 ♀♀, Gällivare, Muddus National Park, Lake Muddus, 67.030916° N, 20.254950° E, 418 masl, loc. 036-02, Malaise trap, 20 Jun.–3 Jul. 2011, leg. H. Gustafsson (NHRS); 2 ♂♂, Gällivare, Muddus National Park, 67.049916° N, 20.256533° E, 443 masl, loc. 037-01, Malaise trap, 7–20 Jun. 2011, leg. H. Gustafsson (NHRS); 1 ♀, Gällivare, Muddus National Park, 67.049916° N, 20.256533° E, 443 masl, loc. 037-02, Malaise trap, 20 Jun.–3 Jul. 2011, leg. H. Gustafsson (NHRS).

### Distribution

Estonia, Norway, Germany, Poland, Czech Republic, Ukraine (Crimea), Spain, Andorra, Algeria (Dominiak & Szadziewski 2010; Stur & Borkent 2014).

### Biology

Specimens were collected on mire next to a lake from the beginning of June to the beginning of July.

#### *Dasyhelea (Dasyhelea) flavifrons* (Guérin, 1833)

*Ceratopogon flavifrons* Guérin, 1833: 165.

*Ceratopogon obscurus* Winnertz, 1852: 45.

*Ceratopogon versicolor* Winnertz, 1852: 45.

*Ceratopogon dufouri* Laboulbène, 1869: 158.

*Ceratopogon hippocastani* Mik, 1888: 185.

*Ceratopogon rufithorax* Strobl, 1920: 261 (as *C. versicolor* var. *rufithorax*).

*Dasyhelea brevitibialis* Goetghebuer, 1919: 72.

*Dasyhelea goetghebueri* Kieffer, 1919: 53.

*Dasyhelea sensualis* Kieffer, 1919: 55.

*Dasyhelea lignicola* Kieffer, 1919: 57.

*Dasyhelea paludicola* Kieffer, 1925b: 152.

*Dasyhelea opressa* Thomsen, 1935: 285.

*Dasyhelea septuosa* Borkent in Borkent & Wirth, 1997: 58 (new name for *D. obscura* (Winnertz, 1852)).

### New record

SWEDEN: 1 ♂, Nybro, Alsterbro, Alsterån, 56.936536° N, 15.920167° E, Trap ID 1008, collecting event 1743, Malaise trap, 16–22 Jul. 2006, leg. Swedish Malaise Trap Project (NHRS).

STRANDBERG J. & JOHANSON K.A., New records of *Dasyhelea* from Sweden

---

**Distribution**

Estonia, Great Britain, Belgium, Germany, Poland, Czech Republic, France, Austria, Switzerland, Spain, Croatia (Istria), Greece (Crete), Bulgaria, Ukraine (Crimea), Russia (Karachay-Cherkessia), USA (Dominiak & Szadziewski 2010).

**Biology**

Larvae of *D. flavifrons* can be found in tree sap or tree holes. Flight period May–October (Dominiak 2012).

**Remarks**

The previous listing of this species as present in Sweden is doubtful as it has only been reported in Rehnberg & Brodin (2010), based on *D. versicolor* (Winnertz, 1852) as listed in Szadziewski *et al.* (1997). We were unable to verify previous records.

*Dasyhelea (Dasyhelea) pallidiventris* (Goetghebuer, 1931)

*Tetrphora pallidiventris* Goetghebuer, 1931: 211.

*Dasyhelea olivacea* Remm, 1962: 117.

**Distribution**

Sweden, Finland, Estonia, Lithuania, Germany, Poland, Czech Republic, Ukraine (Crimea), Georgia, Azerbaijan, North Korea (Dominiak & Szadziewski 2010).

**Biology**

*Dasyhelea pallidiventris* is considered a haloxene, and the larvae inhabit inland saline habitats and the littoral zone of lakes (Szadziewski 1983). Previously recorded from Norrtälje in east-central Sweden (Dominiak & Szadziewski 2010).

Subgenus *Prokempia* Kieffer, 1913

*Prokempia* Kieffer, 1913a: 163, 179. Type species: *Dasyhelea ornaticornis* Kieffer, 1913a: 180 (designated by Wirth 1973: 358).

*Dasyhelea (Prokempia) biunguis* Kieffer, 1925

*Dasyhelea biunguis* Kieffer 1925c: 409.

**New record**

SWEDEN: 1 ♂, 1 ♀, Älmhult, Stenbrohult, Djäknabygds bokbacke, 56.609133° N, 14.193050° E, Trap ID 24, collecting event 1673, Malaise trap, 31 May–20 Jul. 2005, leg. Swedish Malaise Trap Project (NHRS).

**Distribution**

Great Britain, Norway, Estonia, Russia (Kaliningrad Oblast) (Dominiak & Szadziewski 2010).

**Biology**

Specimens collected on a heath with old beeches.

***Dasyhelea (Prokempia) dampfi* Kieffer, 1925**

*Dasyhelea dampfi* Kieffer, 1925b: 150.

*Dasyhelea turfacea* Kieffer, 1925b: 151.

*Dasyhelea estonica* Kieffer, 1925c: 409.

**New record**

SWEDEN: 1 ♂, Gnosjö, Store mosse, Kittlakull, 57.287233° N, 13.919133° E, Trap ID 41, collecting event 1159, Malaise trap, 3–6 Aug. 2004, leg. Swedish Malaise Trap Project (NHRS).

**Distribution**

Estonia, Lithuania, Poland, Czech Republic (Dominiak & Szadziewski 2010).

**Biology**

This specimen was collected at a peat bog in the beginning of August.

Subgenus ***Pseudoculicoides*** Malloch, 1915

*Pseudoculicoides* Malloch, 1915: 309. Type species: *Ceratopogon mutabilis* Coquilett, 1901: 602 (by original designation).

***Dasyhelea (Pseudoculicoides) arenivaga* Macfie, 1943**

*Dasyhelea inconspicua* var. *arenivaga* Macfie, 1943: 151.

**New records**

SWEDEN: 1 ♂, 1 ♀, Gotland, 57.847400° N, 18.811216° E, 3 Jul. 2011, 6 masl, net, leg. J. Strandberg (NHRS); 1 ♂, 3 ♀♀, Gotland, Bästeträsk, 57.899383° N, 18.901083° E, 9 masl, loc. 027-04, Malaise trap, 28 May–12 Jun. 2011, leg. B. Eklund (NHRS).

**Distribution**

Poland, Czech Republic, Switzerland, Romania, Ukraine (Crimea), Bulgaria, Spain, Algeria, Egypt, Israel, United Arab Emirates (Dominiak & Szadziewski 2010; Szadziewski *et al.* 2011).

**Biology**

These specimens were collected in a marsh and in a seasonally flooded area next to a lake. *D. arenivaga* is known to visit umbelliferous and tamarisk flowers (Dominiak & Szadziewski 2010).

***Dasyhelea (Pseudoculicoides) calycata* Remm, 1972**

*Dasyhelea calycata* Remm, 1972: 74.

**New record**

SWEDEN: 1 ♂, 1 ♀, Torsås, Söderåkra, Påboda, 56.434723° N, 16.070844° E, Trap ID 2046, collecting event 2058, Malaise trap, 1 Sep.–3 Oct. 2008, leg. Swedish Malaise Trap Project (NHRS).

**Distribution**

Great Britain, Lithuania, Poland, Slovakia, Bosnia and Herzegovina, Ukraine (Crimea), Romania, Bulgaria, Spain, Hungary, Russia (North Ossetia, Tuva, Buryatia), Mongolia (Dominiak & Szadziewski 2010).



STRANDBERG J. & JOHANSON K.A., New records of *Dasyhelea* from Sweden

---

**Biology**

The specimens were collected in a small village garden. Larvae can be found in both fresh and salt-water habitats and are common on inland saline meadows in Poland (Dominiak 2012).

**Remarks**

The association of the sexes made by Remm (1972) has previously been considered incorrect. The associated female probably belongs to *D. unguistyla* Remm, 1972 (Dominiak & Szadziewski 2010). The female associated in this study by COI sequences differs from the original description in lacking long cerci and in having a subgenital plate with a lumen. According to Dominiak & Szadziewski (2010) the type material is unavailable.

*Dasyhelea (Pseudoculicoides) corinneae* Gosseries, 1991

*Ceratopogon scutellatus* Meigen, 1830: 262.

*Dasyhelea corinneae* Gosseries, 1991: 42 (new name for *D. scutellatus* Meigen, 1830).

*Dasyhelea chonetus* Yu & Zou in Yu *et al.*, 2006: 279.

**Distribution**

Great Britain, Sweden, Poland, Hungary, Ukraine, Russia (North Ossetia, Ussuri Land), China, North Korea, Canada, USA (Dominiak & Szadziewski 2010).

**Biology**

The only specimen recorded from Sweden was collected at Antjärn in August (Dominiak & Szadziewski 2010).

*Dasyhelea (Pseudoculicoides) europaea* Remm, 1962

*Dasyhelea europaea* Remm, 1962: 122.

**New records**

SWEDEN: 1 ♂, Gällivare, Muddus National Park, 67.049916° N, 20.256533° E, 443 masl, loc. 037-01, Malaise trap, 7–20 Jun. 2011, leg. H. Gustafsson (NHRS); 1 ♂, Gotland, Lärbro, 57.847400° N, 18.811216° E, 6 masl, net, 3 Jul. 2011, leg. J. Strandberg (NHRS).

**Distribution**

Norway, Estonia, France, Czech Republic (Dominiak & Szadziewski 2010).

**Biology**

Specimens collected on mire in the north of Sweden and from the vegetation in a marsh in the southeast of Sweden. It is reported as a spring–summer species, most common between May and June (Remm 1962).

*Dasyhelea (Pseudoculicoides) turficola* Kieffer, 1925

*Dasyhelea turficola* Kieffer, 1925a: 15.

*Dasyhelea grenieri* Clastrier, 1966: 703.

*Dasyhelea malibui* Yu, 2008: 165.

### **Distribution**

Great Britain, Ireland, Sweden, Estonia, Lithuania, Russia (Kaliningrad Oblast, Ussuri Land), Poland, Czech Republic, Belgium, France, Spain (Iberian Peninsula, Canaries: Tenerife), Georgia, Morocco, Algeria, Israel (Dominiak & Szadziewski 2010).

### **Biology**

*Dasyhelea turficola* larvae are known to inhabit peat bogs and moist soil close to fresh and salt-water bodies. Adults of the species visit umbelliferous flowers (Dominiak 2012). Previously, *D. turficola* have been collected in Johannisfors (Dominiak & Szadziewski 2010).

Subgenus *Dicryptoscena* Enderlein, 1936

*Dicryptoscena* Enderlein, 1936: 51. Type species *Dasyhelea inclusa* Kieffer, 1918: 188 (by original designation).

*Dasyhelea (Dicryptoscena) modesta* (Winnertz, 1852)

*Ceratopogon modestus* Winnertz, 1852: 43.

*Ceratopogon aestivus* Winnertz, 1852: 42.

*Dasyhelea longipalpis* Kieffer, 1913b: 37.

*Dasyhelea inclusa* Kieffer, 1918: 188.

*Dasyhelea strobli* Kieffer, 1919: 63.

*Dasyhelea pratensis* Goetghebuer, 1920: 44.

*Dasyhelea bihamata* Kieffer, 1923: 667.

*Dasyhelea moascari* Macfie, 1943: 153.

*Dasyhelea densipilosa* Tokunaga, 1963: 41.

### **Distribution**

Norway, Sweden, Russia (Karelia, Leningrad Oblast, North Ossetia), Estonia, Lithuania, Great Britain, Poland, Germany, the Netherlands, Belgium, Czech Republic, France, Switzerland, Austria, Hungary, Romania, Ukraine (Crimea), Bulgaria, Andorra, Spain, Georgia, Azerbaijan, Afghanistan, Iran, China, Japan, Algeria, Egypt, Yemen (Dominiak & Szadziewski 2010).

### **Biology**

Preimaginal stages inhabit a wide range of aquatic and semiaquatic habitats and can be found in ponds, mud, swamps, peat bogs, the littoral zone of lakes and saline habitats (Thienemann 1915, 1950; Mayer 1934; Szadziewski 1986; Przhiboro 1999; Chandler *et al.* 2008).

*Dasyhelea (Dicryptoscena) notata* Goetghebuer, 1920

*Dasyhelea notata* Goetghebuer, 1920: 47.

*Dasyhelea semistriata* Goetghebuer, 1921: 176.

*Dasyhelea sziladyi* Zilahi-Sebess, 1936: 42.

### **Distribution**

Sweden, Finland, Estonia, Lithuania, Poland, Belgium, France, Switzerland, Czech Republic, Hungary, Romania, Spain, Georgia, Russia (Ussuri Land), North Korea, Algeria (Dominiak & Szadziewski 2010).



### Biology

Adults of this species are known to visit umbelliferous flowers (Dominiak 2012).

#### *Dasyhelea (Diryptosцена) stellata* Remm, 1968

*Dasyhelea stellata* Remm in Remm & Zhogolev, 1968: 831.

### New record

SWEDEN: 2 ♂♂, Malmö, Limhamns kalkbrott, 2-“planen”, Malaise trap, 11–25 Jun. 2009, leg. B.W. Svensson & Co. (MZLU).

### Distribution

Great Britain, Poland, France, Czech Republic, Ukraine (Crimea), Russia (North Ossetia) (Dominiak & Szadziewski 2010).

### Biology

These specimens were collected close to a pond in an old limestone quarry in the south of Sweden.

#### *Dasyhelea (Dicryptoscena) thienemanni* Spâtaru & Damian-Georgescu, 1970

*Dasyhelea thienemanni* Spâtaru & Damian-Georgescu, 1970: 425.

### New records

SWEDEN: 2 ♂♂, Norrtälje, Svartsjön, 60.123098° N, 18.615078° E, 2 masl, loc. 020-01, Malaise trap, 30 Jul.–26 Aug. 2010, leg. J. Strandberg (NHRS); 2 ♂♂, Malmö, Limhamns kalkbrott, 1-“grafitti”, Malaise trap, 26 Jun.–8 Jul. 2009, leg. B.W. Svensson & Co. (MZLU).

### Distribution

Estonia, Lithuania, Poland, Slovakia, Hungary, Romania, Bulgaria, Georgia, Azerbaijan (Dominiak & Szadziewski 2010).

### Biology

The specimens were collected from a small peat-bog in the middle-east of Sweden and from an old limestone quarry in the south of Sweden. Preimaginal stages have previously been found in and around a spring (Spâtaru & Damian-Georgescu 1970).

#### *Dasyhelea (Dicryptoscena) dominiakae* sp. nov.

[urn:lsid:zoobank.org:act:956852B2-A7AD-46A6-A238-0F8B55540915](http://urn:lsid:zoobank.org:act:956852B2-A7AD-46A6-A238-0F8B55540915)

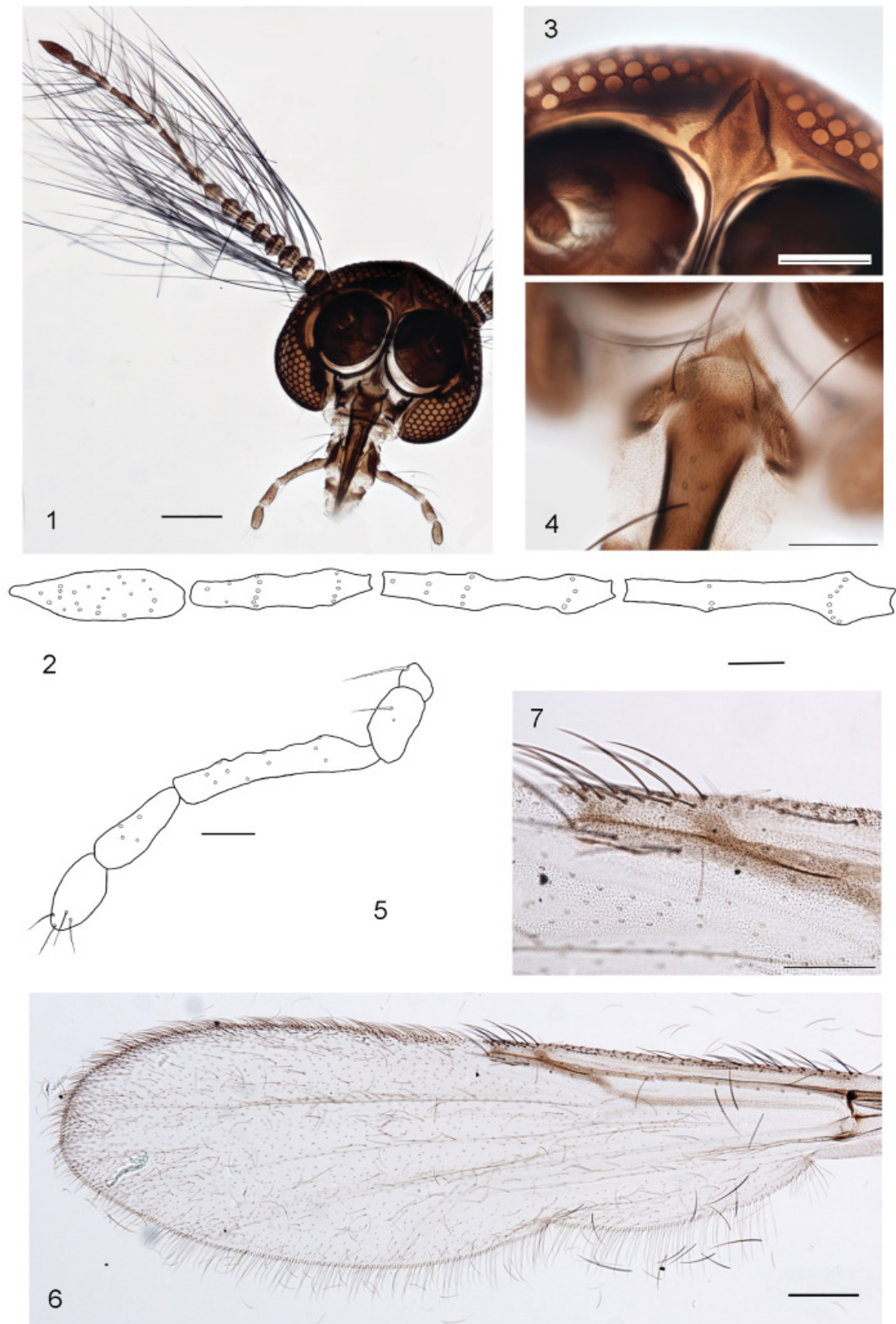
Figs 1–11

### Diagnosis

The male resembles those of *D. notata* in the morphology of the genitalia, particularly by the presence of a pair of horn-like projections on the posterior margin of sternite 9. It is distinguished from *D. notata* in having an additional triangular projection on each lateral side of the posterior margin of sternite 9.

### Etymology

This species is named after Dr. Patrycja Dominiak for her contributions to our knowledge of European Ceratopogonidae, notably the *Dasyhelea*.



**Figs 1–7.** *Dasyhelea dominiakae* sp. nov., holotype, ♂. 1. Head. 2. Distal flagellomeres. 3. Frontal sclerite. 4. Clypeus. 5. Palp. 6. Wing. 7. First and second radial cell of wing. Scale bars: 1, 6 = 100  $\mu$ m; 3–4, 7 = 50  $\mu$ m; 2, 5 = 25  $\mu$ m.

## Type material

### Holotype

SWEDEN: ♂, Skåne, Malmö, Limhamns kalkbrott, 2-“planen”, Malaise trap, 11–25 Jun. 2009, leg. B.W. Svensson & Co. (MZLU) (DNA voucher: 4DT).

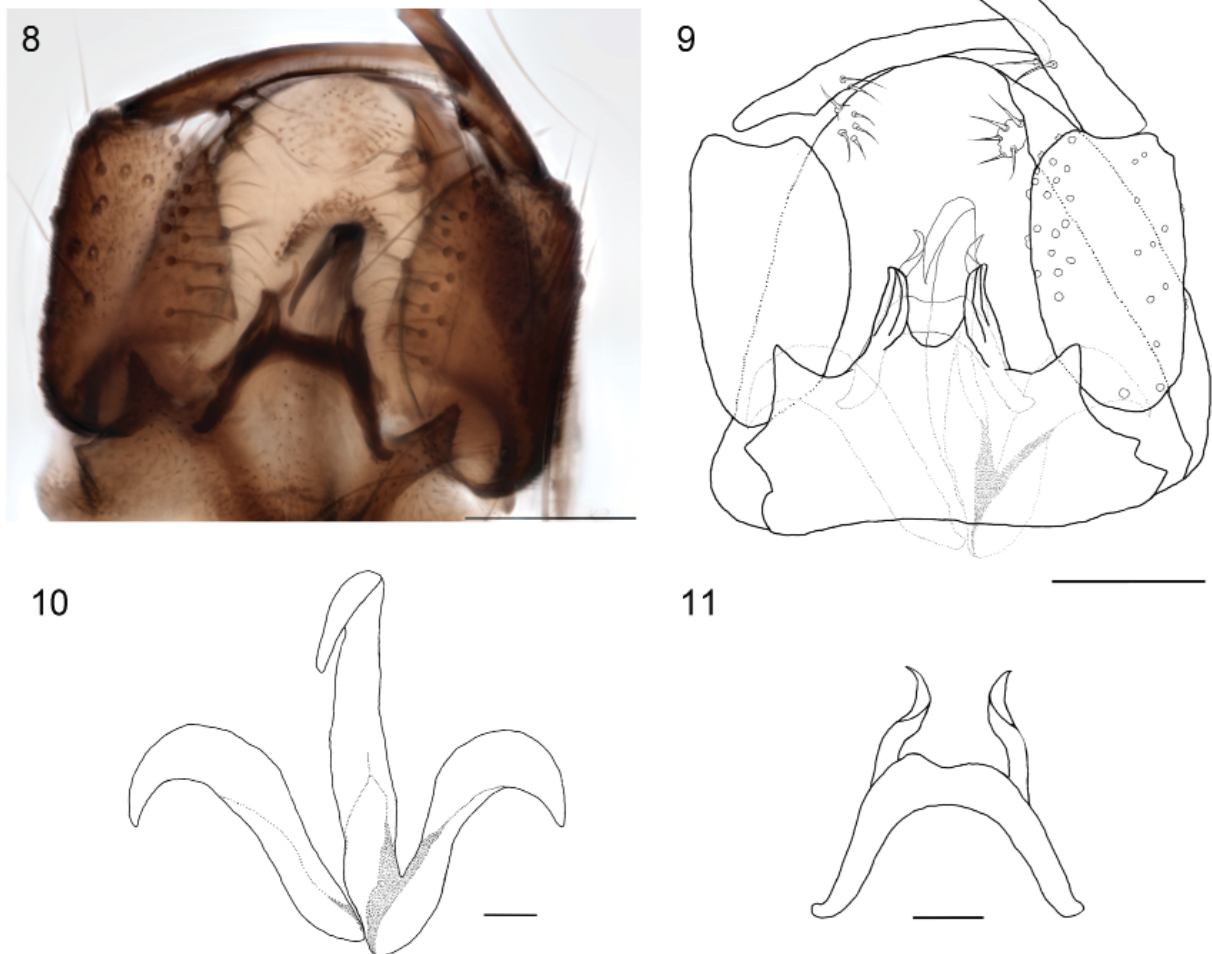
### Paratypes

SWEDEN: 3 ♂♂, same data as holotype; 1 ♂, Skåne, Malmö, Limhamns kalkbrott, 1-“graffiti”, Malaise trap, 28 May–10 Jun. 2009, leg. B.W. Svensson & Co. (MZLU).

## Description

### Male

HEAD (Figs 1–5). Antennal flagellum length 717  $\mu\text{m}$  (697–747  $\mu\text{m}$ ,  $n = 4$ ); AR 1.15 (1.0–1.28,  $n = 4$ ) (Fig. 2). Frontal sclerite rhomboid (Fig. 3). Clypeus entire, with 12 (11–12,  $n = 4$ ) long setae (Fig. 4). Palp segment 3 slender, 95  $\mu\text{m}$  (95  $\mu\text{m}$ ,  $n = 4$ ); PR<sub>(III)</sub> 5.4 (4.75–6.3,  $n = 4$ ); first half with hyaline sensillae on inner surface (Fig. 5).



**Figs 8–11.** *Dasyhelea dominiakae* sp. nov., holotype, ♂. **8–9.** Ventral aspect of genitalia. **10.** Parameres. **11.** Aedeagus. Scale bars: 8–9 = 50  $\mu\text{m}$ ; 10–11 = 16  $\mu\text{m}$ .

THORAX (Figs 6–7). Scutellum pale, with 12 bristles (8–11,  $n = 4$ ). Wing length 1.15 mm (1.02–1.17 mm,  $n = 4$ ); CR 0.45 (0.46–0.52,  $n = 4$ ); macrotrichia numerous (Fig. 6); first radial cell slit-like, second cell open (Fig. 7). Legs brown, except tarsi pale brown.

GENITALIA (Figs 8–11). Apicolateral process of tergite 9 short, with five short bristles. Posterior margin of sternite 9 with triangular projection on each lateral side and a pair of horn-like projections. Gonostylus straight, basally broad, apically slender, proximal part covered by small setae, two long bristles at midpoint present (Figs 8–9). Parameres asymmetrical. Posterior process of parameres fused to right arm, tapering evenly along its length, evenly curved dorsad (Fig. 10). Aedeagus high arched, with apicolateral processes twisted along its length, tapering apically (Fig. 11).

### Female

Unknown.

### Remarks

*Dasyhelea dominiakae* sp. nov. is a member of the subgenus *Dicryptoscena* and is similar to *D. notata* and *D. modesta*. What distinguishes this species from those mentioned above, as well as other European species of *Dicryptoscena*, is the presence of triangular projections located on sternite 9. The male of *D. dominiakae* sp. nov. further differs from *D. notata* in having an evenly shaped posterior process and it is also separated from *D. modesta* by the equal length of the fourth and fifth palpal segments.

### Biology

The holotype and paratypes were collected with Malaise traps in an old limestone quarry in the south of Sweden during May–June, among *Salix caprea* Linnaeus next to a pond.

### *Dasyhelea (Dicryptoscena) gothlandica* sp. nov.

[urn:lsid:zoobank.org:act:5FCC2057-325D-4EFF-B0F9-0C660A747422](http://urn:lsid:zoobank.org:act:5FCC2057-325D-4EFF-B0F9-0C660A747422)

Figs 12–32

### Diagnosis

The male genitalia of this species are characteristic in having the posterior margin of sternite 9 with a pair of processes apically separated by a shallow furrow. Gonostyli short, tapering to an indented sharp point. The aedeagus has broad apicolateral processes, and the posterior process of the paramere has fine hairs apically.

### Etymology

*Gothlandica* refers to Gotland, a calcareous island located in the Baltic Sea east of mainland Sweden, where the holotype was collected.

### Type material

#### Holotype

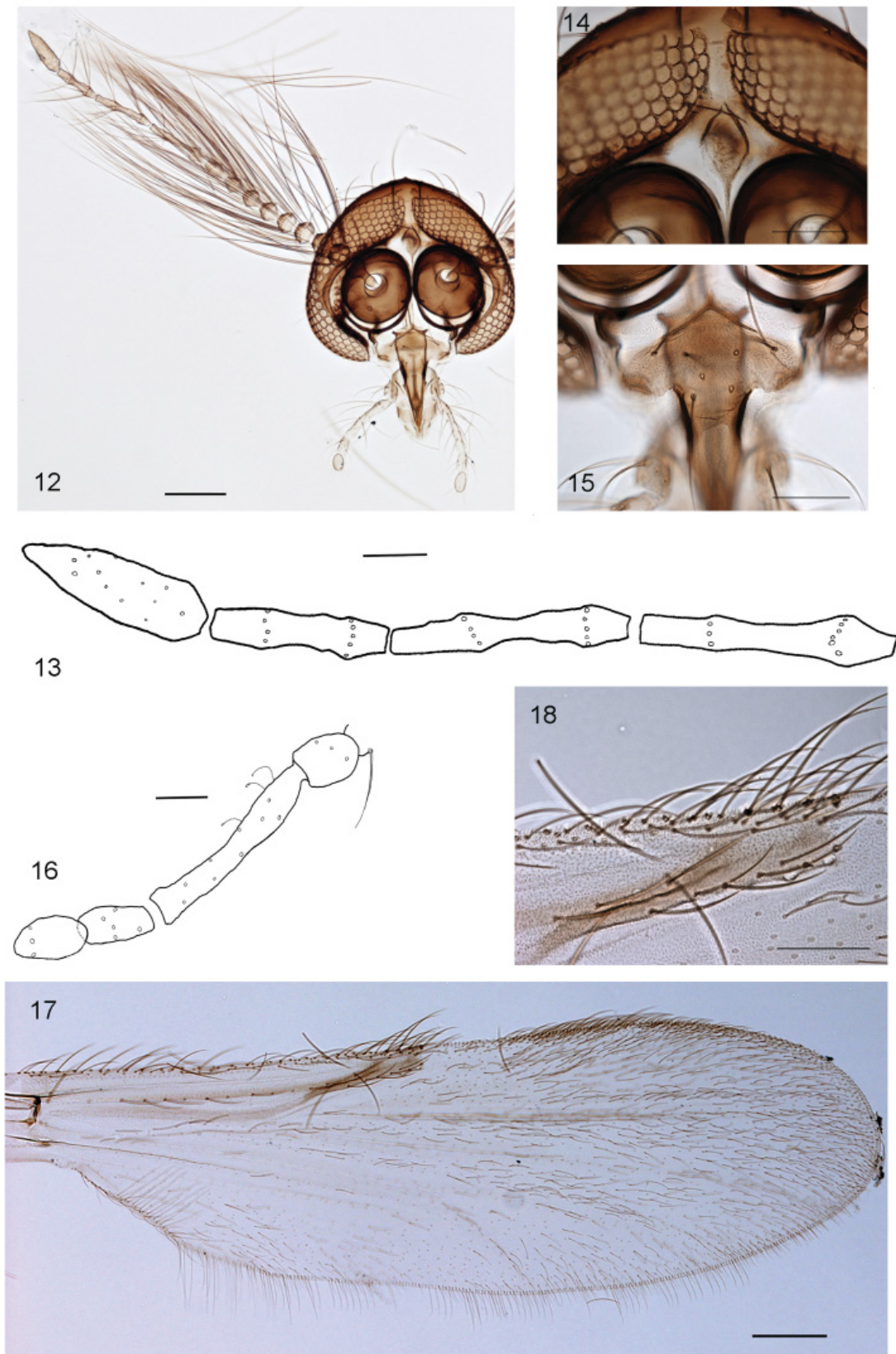
SWEDEN: ♂, Gotland, Bästeträsk, 57.899383° N, 18.901083° E, 9 masl, Malaise trap, 28 May–12 Jun. 2011, leg. B. Eklund (NHRS) (DNA voucher: 4BA).

#### Paratypes

SWEDEN: 2 ♂♂, 2 ♀♀, same data as holotype; 1 ♂, Gotland, Horsan, 57.865883° N, 18.846350° E, 4 masl, Malaise trap, 10–25 Jul. 2011, leg. B. Eklund (NHRS); 1 ♂, 2 ♀♀, Gotland, Bästeträsk, 57.899383° N, 18.901083° E, 9 masl, sweep net, 3 Jul. 2011, leg. J. Strandberg (NHRS) (DNA voucher: 6AW).



STRANDBERG J. & JOHANSON K.A., New records of *Dasyhelea* from Sweden



**Figs 12–18.** *Dasyhelea gothlandica* sp. nov., holotype, ♂. 12. Head. 13. Distal flagellomeres. 14. Frontal sclerite. 15. Clypeus. 16. Palp. 17. Wing. 18. First and second radial cell of wing. Scale bars: 12, 17 = 100 µm; 14, 18 = 50 µm; 13, 15–16 = 25 µm.

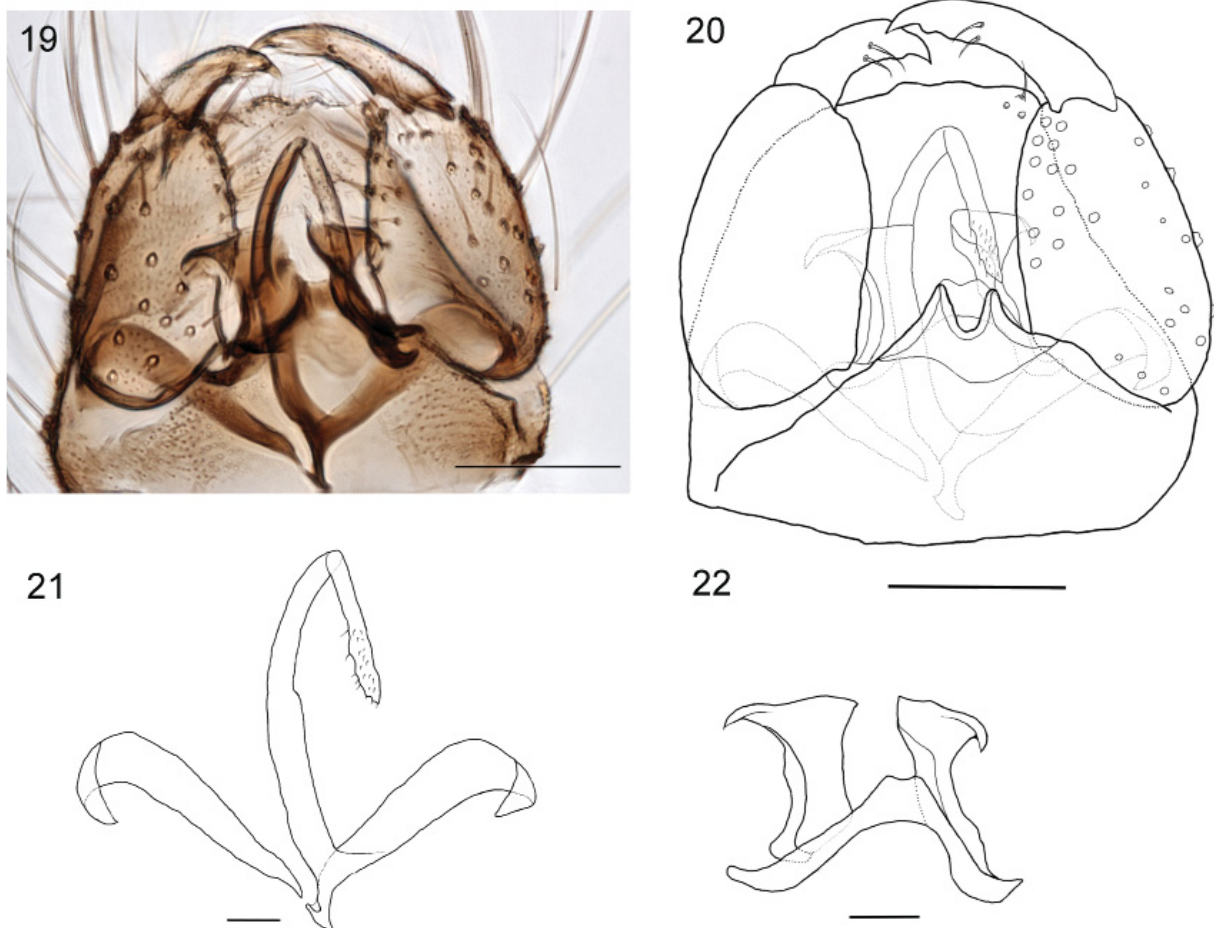
## Description

### Male

**HEAD** (Figs 12–16). Antennal flagellum length 727  $\mu\text{m}$  (687–727  $\mu\text{m}$ ,  $n = 4$ ); AR 1.06 (0.97–1.19,  $n = 4$ ) (Fig. 13). Frontal sclerite elliptical (Fig. 14). Clypeus entire, with 8 (6–8,  $n = 4$ ) long setae (Fig. 15). Palp segment 3 slender, 90  $\mu\text{m}$  (85–91  $\mu\text{m}$ ,  $n = 4$ );  $\text{PR}_{(\text{III})}$  6.6 (6.3,  $n = 4$ ) (Fig. 16); first half with hyaline sensillae on inner surface.

**THORAX** (Figs 17–18). Scutellum pale, with 10 bristles (9–10,  $n = 4$ ). Wing length 1.15 (1.08–1.17 mm,  $n = 4$ ); CR 0.45 (0.46–0.48,  $n = 4$ ); macrotrichia numerous (Fig. 17); first radial cell slit-like, second cell open (Fig. 18). Legs light brown, tarsi paler.

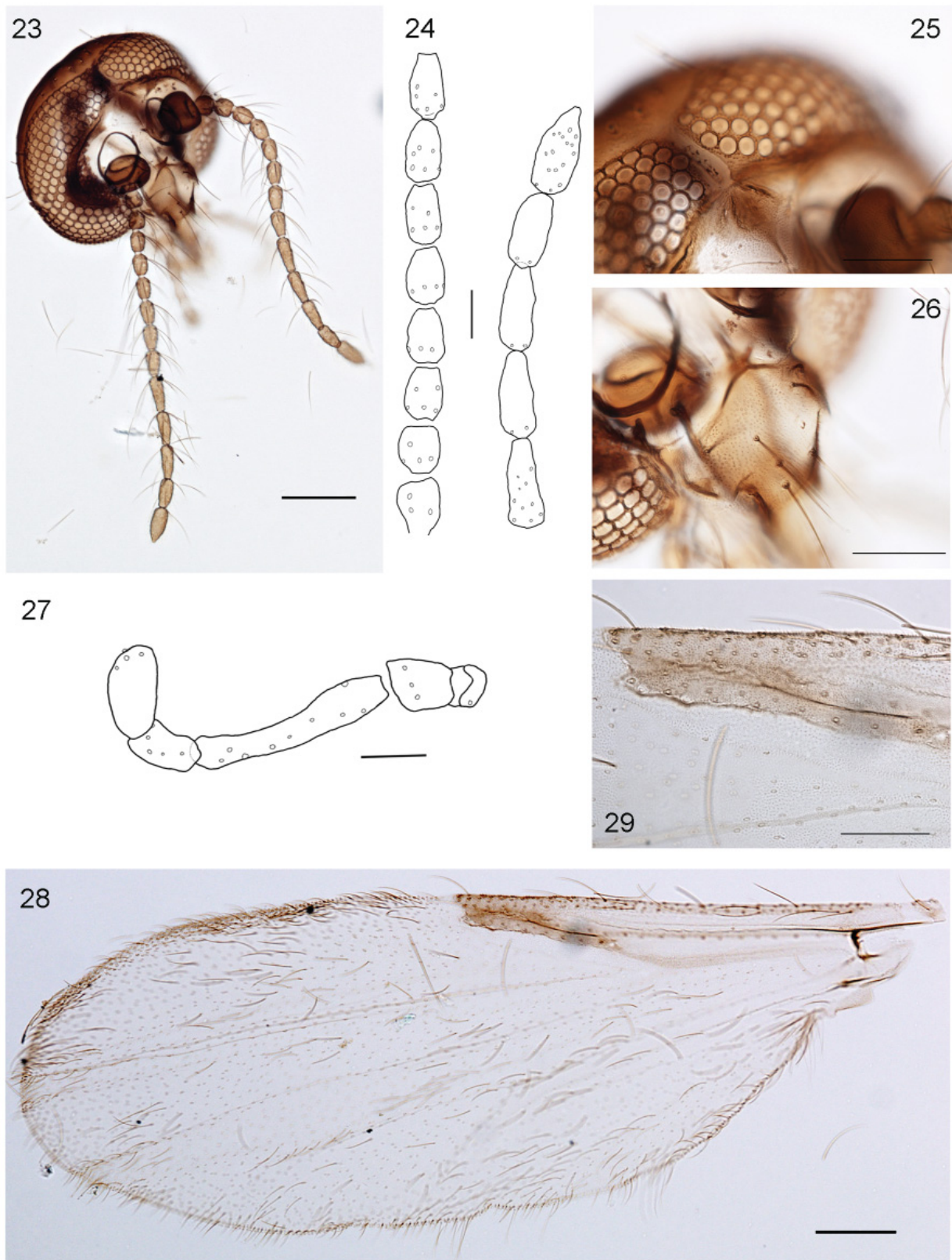
**GENITALIA** (Figs 19–22). Apicolateral process of tergite 9 short. Posterior margin of sternite 9 apically divided into pair of obtuse projections. Gonostylus short, tapering to indented sharp point, covered by small setae, two long bristles at midpoint present (Figs 19–20). Parameres asymmetrical; posterior process fused with right arm; long and slender, distinctly bent apically, with fine apical hairs (Fig. 21). Aedeagus low arched with apicolateral processes broad, somewhat folded, extended laterally in distal part (Fig. 22).



**Figs 19–22.** *Dasyhelea gothlandica* sp. nov., holotype, ♂. **19–20.** Ventral aspect of genitalia. **21.** Parameres. **22.** Aedeagus. Scale bars: 19–20 = 50  $\mu\text{m}$ ; 21–22 = 16  $\mu\text{m}$ .



STRANDBERG J. & JOHANSON K.A., New records of *Dasyhelea* from Sweden



**Figs 23–29.** *Dasyhelea gothlandica* sp. nov., paratype, ♀. **23.** Head. **24.** Flagellomeres. **25.** Frontal sclerite. **26.** Clypeus. **27.** Palp. **28.** Wing. **29.** First and second radial cell of wing. Scale bars: 23, 28 = 100 µm; 25–26, 29 = 50 µm; 24, 27 = 25 µm.

**Female**

**HEAD** (Figs 23–27). Antennal flagellum length 545  $\mu\text{m}$  (444–525,  $n = 3$ ); distal flagellomeres elongate; AR 0.96 (0.86–1.0,  $n = 3$ ) (Fig. 24). Clypeus entire, with 8 ( $n = 3$ ) long setae (Fig. 25). Frontal sclerite elliptical (Fig. 26). Palp segment 3 slender, 80  $\mu\text{m}$  (80  $\mu\text{m}$ ,  $n = 4$ );  $\text{PR}_{(\text{III})}$  5.6 (5.3,  $n = 3$ ) (Fig. 27); with hyaline sensillae at basal part of inner surface.

**THORAX** (Figs 28–29). Scutellum pale, with 8 bristles (9–10,  $n = 3$ ). Wing length 1.1 mm (1.05–1.13,  $n = 3$ ); CR 0.46 (0.44–0.47,  $n = 3$ ) (Fig. 28). First radial cell slit-like, second cell open but small (Fig. 29). Legs as in male.

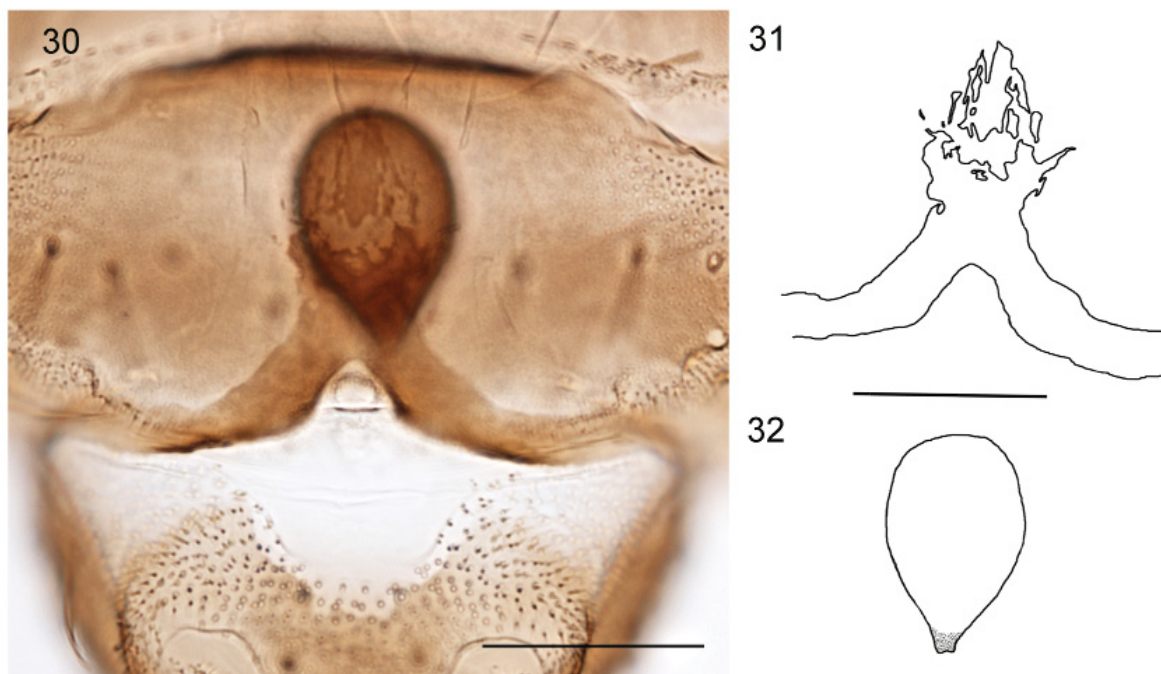
**GENITALIA** (Figs 30–32). Subgenital plate with notum separated from ramus, slightly fragmented (Figs 30–31). Spermatheca single; ovoid-shaped with short neck; length  $\times$  width: 60  $\times$  40  $\mu\text{m}$  (60  $\times$  40  $\mu\text{m}$ ,  $n = 3$ ) (Fig. 32).

**Remarks**

This species is a member of the subgenus *Dicryptoscena*, and the male is similar to that of *Dasyhelea albidipes* Santos Abreu, 1918 in the morphology of the genitalia, particularly by the presence of a pair of processes on the posterior margin of sternite 9. *D. gothlandica* sp. nov. differs from *D. albidipes* by the broadly shaped apicolateral processes and the short gonostyli.

**Biology**

The holotype was collected in a Malaise trap next to Lake Bästeträsk, with surrounding vegetation consisting of *Pinus sylvestris* Linnaeus and small shrubs. One of the male paratypes was collected in a Malaise trap next to Lake Horsan, approximately 5 km south-east of Bästeträsk.



**Figs 30–32.** *Dasyhelea gothlandica* sp. nov., paratype, ♀. **30–31.** Subgenital plate. **32.** Seminal capsule. Scale bars = 50  $\mu\text{m}$ .

STRANDBERG J. & JOHANSON K.A., New records of *Dasyhelea* from Sweden

---

Subgenus *Sebessia* Remm, 1979

*Sebessia* Remm, 1979: 55. Type species: *Dasyhelea flavopyga* Zilahi-Sebess, 1940: 49 (by original designation).

*Dasyhelea (Sebessia) acuminata* Kieffer, 1919

*Dasyhelea acuminata* Kieffer, 1919: 60.

*Dasyhelea polita* Edwards, 1921: 124.

*Dasyhelea verticillata* Kieffer, 1925a: 63.

*Dasyhelea littoralis* Goetghebuer, 1934: 289.

**New records**

SWEDEN: 1 ♂, Mörbylånga, Frösslunda alvar, northeastern part, 56.547450° N, 16.577250° E, Trap ID 20, collecting event 1498, Malaise trap, 5 Jul.–2 Aug. 2005, leg. Swedish Malaise Trap Project (NHRS); 3 ♀♀, Gotland, Lärbro, 57.847400° N, 18.811216° E, 6 masl, net, 3 Jul. 2011, leg. J. Strandberg (NHRS).

**Distribution**

Great Britain (Scotland), Estonia, Belgium, France, Czech Republic, Hungary, Bulgaria (Dominiak & Szadziewski 2010).

**Biology**

The male was collected next to a pasture and the females from the vegetation in a marsh.

**Discussion**

The two new species belong to the subgenus *Dicryptoscena* and together with the new records the Swedish *Dasyhelea* fauna now contains 20 species, representing the five subgenera, i.e., *Dasyhelea* (6 spp.), *Dicryptoscena* (5 spp.), *Prokempia* (2 spp.), *Pseudoculicoides* (6 spp.) and *Sebessia* (1 sp.). The number of *Dasyhelea* species in neighboring countries ranges from 8 for Finland (Huldén & Huldén 2014), to 11 for both Norway and Germany (Stur & Borkent 2014; Szadziewski *et al.* 2012), 12 for Lithuania, and 30 in both Estonia and Poland (Szadziewski *et al.* 2012). According to Peterson & Achim (2001) there are 4 species likely to occur in Denmark based on distributional patterns, and Remm (1988), without locality data, lists *Dasyhelea dampfi* as having a distribution that includes Latvia. Comparing the species composition between neighbouring countries, there are now six species present in Sweden that have also been reported from either Norway or Finland. The species *D. bensoni*, *D. bilineata* and *D. modesta* are present in all three countries. Sweden shares 13 species with Estonia and Poland of which 8 are present in all three countries (Szadziewski *et al.* 2012). *Dasyhelea flavoscutellata* (Zetterstedt, 1850) has not been recorded from Sweden but is present in all the countries mentioned above except Lithuania, Denmark and Latvia, and is therefore likely to live in Sweden as well. Most of the new records for Sweden have been collected from the southern parts of the country and only two records are from a northern locality (Muddus National Park). The diversity from a major part of Sweden is thus poorly known and could probably yield many more species. The substantial increase of *Dasyhelea* species in Sweden probably signals that the knowledge of *Dasyhelea* in particular and Ceratopogonidae in general is poor.

**Acknowledgements**

The authors are grateful for the help in identifications provided by Dr. Patrycja Dominiak and Dr. Ryszard Szadziewski at the Department of Invertebrate Zoology and Parasitology, University of Gdansk, Poland. For making material available for this study we are particularly indebted to Kajsa Glemhorn, Station



Linné, Öland, Sweden and the staff of the Museum of Zoology in Lund, Sweden. We are very thankful to Mr. Bertil Eklund, Gotland, Sweden and Mr. Hans Gustafsson, Gällivare, Sweden for emptying Malaise traps. We are much obliged for the assistance in the lab provided by Dr. Tobias Malm (NHRS). This study was funded by The Swedish Taxonomy Initiative (dha 157/09 1.4).

## References

- Borkent A. 2015. *World Species of Biting Midges (Diptera: Ceratopogonidae)*. Available from <http://www.inhs.illinois.edu/files/7613/9136/7587/WorldCatalogtaxa.pdf> [accessed 17 Feb. 2015]
- Borkent A. & Wirth W. 1997. World species of biting midges (Diptera: Ceratopogonidae). *Bulletin of the American Museum of Natural History* 233: 1–257. Available from <http://digitallibrary.amnh.org/dspace/handle/2246/7> [accessed 18 Jun. 2015]
- Brodskaya N.K. 1995. A new species of biting midge of the genus *Dasyhelea* Kieff. (Diptera, Ceratopogonidae) from Leningrad Region. *International Journal of Dipterological Research* 7: 193–196.
- Chandler P.J., Ashe P. & Connor J.P. 2008. Notes on Ceratopogonidae (Diptera) including some new national records for Britain and Ireland. *Dipterists Digest* 15: 73–94.
- Clastrier J. 1966. Cératopogonidés des îles Canaries (Dipt. Nematocera). *Annales de la Société Entomologique de France, N.S.* 2: 693–710.
- Coquilett D.W. 1901. New Diptera in the U.S. National Museum. *Proceedings of the United States National Museum* 23: 593–618. Available from <http://www.biodiversitylibrary.org/item/32360#page/663/mode/1up> [accessed 14 Jun. 2015]
- Disney R.H.L. 1975. A midge (Diptera, Ceratopogonidae) new to Britain that is abundant in the limestone pavement of the Yorkshire Pennines. *Entomologist's Monthly Magazine* 118: 233–234.
- Domniak P. 2005. Biting midges (Diptera: Ceratopogonidae) developing in hollows and sap of various species of trees. *Dipteron* 21: 5–6.
- Domniak P. 2012. Biting midges of the genus *Dasyhelea* Kieffer (Diptera: Ceratopogonidae) in Poland. *Polish Journal of Entomology* 81: 211–304.
- Domniak P. & Szadziewski R. 2006. Biting midges of the genus *Dasyhelea* Kieffer, 1911 (Diptera: Ceratopogonidae) collected from Polish peat-bogs. *Dipteron* 22: 4–7.
- Dominiak P. & Szadziewski R. 2010. Distribution and new synonymy in European biting midges of the genus *Dasyhelea* Kieffer (Diptera: Ceratopogonidae). *Zootaxa* 2437: 1–37.
- Edwards F.W. 1921. Diptera Nematocera from Arran and Loch Etive. *Scottish Naturalist* 109–110: 59–61, 89–92, 121–125. Available from <http://www.biodiversitylibrary.org/item/87922#page/65/mode/1up> [accessed 14 Jun. 2015]
- Edwards F.W. 1929. British non-biting midges (Diptera, Chironomidae). *Transactions of the Royal Entomological Society of London* 77: 279–430. <http://dx.doi.org/10.1111/j.1365-2311.1929.tb00692.x>
- Edwards F.W. 1933. Some Pertshire Diptera. *Scottish Naturalist* 201: 87–92.
- Enderlein G. 1936. Ordnung: Zweiflügler, Diptera. Abt. 16. In: Brohmer P., Ehrmann P. & Ulmer G. (eds) *Die Tierwelt Mitteleuropas 6: Insekten*: 259. Part III. Quelle & Meyer, Leipzig.
- Glukhova V.M. 1981. A comparative morphological review of the mouthparts of the females and the males in the subfamilies Dasyheleinae and Forcipomyiinae (Diptera: Ceratopogonidae). *Entomologiceskoe Obozreine* 60: 62–76.

STRANDBERG J. & JOHANSON K.A., New records of *Dasyhelea* from Sweden

---

- Glukhova V.M. & Brodskaya N.K. 1997. Description of a new species of non-blood-sucking biting midge of the genus *Dasyhelea* Kieffer (Diptera, Ceratopogonidae) from Karelia. *Entomologiceskoe Obozrenie* 76: 443–447.
- Goetghebuer D.M. 1919. Observations sur les larves et nymphes de quelques Chironomides de Belgique. *Annales de Biologie Lacustre* 9: 51–78. Available from <http://www.biodiversitylibrary.org/item/28396#page/59/mode/1up> [accessed 14 Jun. 2015]
- Goetghebuer D.M. 1920. Ceratopogoninae de Belgique. *Mémoires du Musée Royal d'Histoire Naturelle de Belgique* 8 (3): 2–116. Available from <http://www.biodiversitylibrary.org/item/133957#page/241/mode/1up> [accessed 14 Jun. 2015]
- Goetghebuer D.M. 1921. Chironomides de Belgique et spécialement de la zone des Flandres. *Mémoires du Musée Royal d'Histoire Naturelle de Belgique* 8 (4): 1–208. Available from <http://www.biodiversitylibrary.org/item/133957#page/363/mode/1up> [accessed 14 Jun. 2015]
- Goetghebuer D.M. 1931. Ceratopogonidae et Chironomidae nouveaux d'Europe. *Bulletin de Belgique. Annales de Biologie Lacustre* 15: 93–104.
- Goetghebuer D.M. 1934. Ceratopogonidae et Chironomidae nouveaux ou peu connus d'Europe. *Bulletin et Annales de la Société Entomologique de Belgique* 74: 287–294.
- Gosseries J. 1991. Ceratopogonidae. In: Grootaert P., de Bruyn L. & de Meyer M. (eds) *Catalogue of the Diptera of Belgium*. Institut Royal des Sciences Naturelles de Belgique, Documents de Travail 70: 41–45.
- Graves R.C. & Graves A.C.F. 1985. Diptera associated with shelf fungi and certain other microhabitats in the highlands area of western North Carolina. *Entomological News* 96: 87–92.
- Guérin M.F.E. 1833. Notice sur les métamorphoses des Cératopogons et description de deux espèces nouvelles de ce genre, découvertes aux environs de Paris. *Annales de la Société Entomologique de France* 2: 161–167. Available from <http://www.biodiversitylibrary.org/item/100631#page/167/mode/1up> [accessed 14 Jun. 2015]
- Huldén L. & Huldén L. 2014. Checklist of the family Ceratopogonidae (Diptera) of Finland. In: Kahanpää J. & Salmela J. (eds) *Checklist of the Diptera of Finland*. *ZooKeys* 441: 53–61. <http://dx.doi.org/10.3897/zookeys.441.7742>
- Kieffer J.J. 1911. Nouvelles descriptions de chironomides obtenus d'éclosion. *Bulletin de la Société d'Histoire Naturelle de la Moselle* 27: 1–60.
- Kieffer J.J. 1913a. Nouvelle étude sur les chironomides de l'Indian Museum de Calcutta. *Records of the Indian Museum* 9: 119–197.
- Kieffer J.J. 1913b. Nouvelle contribution à la connaissance des tendipédides d'Allemagne. *Bulletin de la Société d'Histoire Naturelle de la Moselle* 28: 37–44.
- Kieffer J.J. 1918. Beschreibung neuer, auf Lazarettsschiffen des östlichen Kriegsschauplatzes und bei Ignalio in Litauen von Dr. Horn gesammelter Chironomiden, mit Übersichtstabellen einiger Gruppen von paläarktischen Arten (Dipt.). *Entomologische Mitteilungen* 7: 35–188. Available from <http://www.biodiversitylibrary.org/item/40402#page/51/mode/1up> [accessed 14 Jun. 2015]
- Kieffer J.J. 1919. Chironomides d'Europe conservés au Musée National Hongrois de Budapest. *Annales Musei Nationalis Hungarici* 17: 1–160.
- Kieffer J.J. 1923. Ceratopogonines recueillis au Sahara Constantinois. *Archives de l'Institut Pasteur d'Algérie* 1: 654–683.
- Kieffer J.J. 1925a. Diptères (Nématocères piqueurs): Chironomidae Ceratopogoninae. *Faune de France* 11: 1–139.

- Kieffer J.J. 1925b. Chironomiden der Hochmoore Nordeuropas und des östlichen Mitteleuropas. *Beiträge zur Kunde Estlands* 10: 145–163.
- Kieffer J.J. 1925c. Nouveaux genres et nouvelles espèces de Chironomides piqueurs. *Archives de l'Institut Pasteur d'Algérie* 3: 405–430.
- Laboulbène A. 1869. Histoires des métarmorphoses du *Ceratopogon dufouri*. *Annales de la Société Entomologique de France, Series 4*, 9: 157–166. Available from <http://www.biodiversitylibrary.org/item/101299#page/163/mode/1up> [accessed 14 Jun. 2015]
- Macfie J.W.S. 1943. Ceratopogonidae (Diptera) from Egypt. *Proceedings of the Royal Entomological Society of London B* 12: 145–159. <http://dx.doi.org/10.1111/j.1365-3113.1943.tb00763.x>
- Malloch J.R. 1915. The Chironomidae, or midges, of Illinois, with particular reference to the species occurring in the Illinois River. *Bulletin of the Illinois State Laboratory of Natural History* 10: 275–543. Available from <http://www.biodiversitylibrary.org/item/34962#page/323/mode/1up> [accessed 14 Jun. 2015]
- Mayer K. 1934. Die Metamorphose der Ceratopogonidae (Dipt.): ein Beitrag zur Morphologie, Systematik, Ökologie und Biologie der Jugendstadien dieser Dipterenfamilie. *Archiv für Naturgeschichte* 3: 205–288.
- Meigen J.W. 1830. *Systematische Beschreibung der Bekannten Europäischen Zweiflügeligen Insekten*, Vol. 6. Schulzische Buchhandlung, Hamm. Available from <http://www.biodiversitylibrary.org/item/45860#page/9/mode/1up> [accessed 14 Jun. 2015]
- Mik J. 1888. Zur Biologie von *Ceratopogon* Meig., nebst Beschreibung einer neuen Art dieser Gattung. *Wiener Entomologische Zeitung* 7: 183–192. Available from <http://www.biodiversitylibrary.org/item/43819#page/207/mode/1up> [accessed 14 Jun. 2015]
- Nielsen S.A., Nielsen B.O. & Chirico J. 2010. Monitoring of biting midges (Diptera: Ceratopogonidae: *Culicoides* Latreille) on farms in Sweden during the emergence of the 2008 epidemic of bluetongue. *Parasitology Research* 106: 1197–1203. <http://dx.doi.org/10.1007/s00436-010-1791-4>
- Petersen F.T. & Achim S. 2001. Ceratopogonidae. In: Petersen F.T. & Meier R. (eds) A preliminary list of the Diptera of Denmark. *Steenstrupia* 26: 136–138.
- Przhiboro A.A. 1999. The quantitative characteristics of Diptera (Insecta) of the shallow littoral zone of small lakes in North Karelia. *Proceedings of the Zoological Institute of the Russian Academy of Sciences* 281: 129–134.
- Przhiboro A.A. 2005. New data on Ceratopogonidae from lake shore habitats in NW Russia (Diptera). *Zoosystematica Rossica* 14: 165–167.
- Rehnberg E. & Brodin Y. 2010. Svidknott (Diptera, Ceratopogonidae) – irriterande okända. *Entomologisk Tidskrift* 131: 169–176.
- Remm H. 1962. The genus *Dasyhelea* Kieffer in Estonia (Diptera, Heleidae). *Tartu Riikliku Ülikooli Toimetised* 120: 108–133.
- Remm H. 1972. New species of Ceratopogonidae (Diptera) from the South Siberia. *Tartu Riikliku Ülikooli Toimetised* 293: 62–90.
- Remm H. 1979. A catalogue of the Ceratopogonidae (Diptera) of the Estonian S.S.R. *Eesti NSV Teaduste Akadeemia Tartu*: 40–60.
- Remm H. 1988. Family Ceratopogonidae. In: Soos Á. & Papp L. (eds) *Catalogue of Palaearctic Diptera*, Vol. 3. Akadémiai Kiadó, Budapest.



STRANDBERG J. & JOHANSON K.A., New records of *Dasyhelea* from Sweden

---

- Remm H. 1993. New species of Ceratopogonidae (Diptera) from the CIS. *Izvestia Akademii Nauk Estonii, Biologia* 42: 180–200.
- Remm H. & Zhogolev D.T. 1968. Contributions to the fauna of biting midges (Diptera, Ceratopogonidae) of the Crimea. *Entomologiceskoe Obozrenie* 47: 826–842.
- Remmert H. 1953. *Dasyhelea tecticola* n. sp., eine Ceratopogonidae aus Regenrinnen (Diptera: Ceratopogonidae). *Beiträge zur Entomologie* 3: 333–336.
- Spâțaru P. & Damian-Georgescu A. 1970. Metamorfoza la *Dasyhelea mayeri* n. sp. si *Dasyhelea thienemanni* n. sp. (Ceratopogonidae, Diptera). *Studii si Cercetari de Biologie, Seria Zoologie* 22: 421–431.
- Strandberg J. & Johanson K.A. 2010. The historical biogeography of *Apsilochorema* (Trichoptera, Hydrobiosidae) revised, following molecular studies. *Journal of Zoological Systematics and Evolutionary Research* 49: 110–118. <http://dx.doi.org/10.1111/j.1439-0469.2010.00578.x>
- Strenzke K. 1950. XI. Anhang. *Dasyhelea lithotelmatica* n. sp. In: Thienemann A. (ed.) Lunzer Chironomiden. Ergebnisse von Untersuchungen der stehenden Gewässer des Lunzer Seengebietes (Niederösterreich). *Archiv für Hydrobiologie*, Suppl. 18: 178–187.
- Strobl B.G. 1910. Die Dipteren von Steiermark. II. Nachtrag. *Mitteilungen des Naturwissenschaftlichen Vereines für Steiermark* 46: 45–293. Available from <http://www.biodiversitylibrary.org/item/93344#page/593/mode/1up> [accessed 23 Jun. 2015]
- Stur E. & Borkent A. 2014. When DNA barcoding and morphology mesh: Ceratopogonidae diversity in Finnmark, Norway. *ZooKeys* 463: 95–131. <http://dx.doi.org/10.3897/zookeys.463.7964>
- Szadziewski R. 1983. Flies (Diptera) of the saline habitats of Poland. *Polish Journal of Entomology* 53: 31–76.
- Szadziewski R. 1986. Redescription and notes on some Ceratopogonidae (Diptera). *Polish Journal of Entomology* 56: 3–103.
- Szadziewski R., Krzywinski J. & Gilka W. 1997. Diptera, Ceratopogonidae, biting midges. In: Nilsson A. (ed.) *Aquatic Insects of North Europe – A Taxonomic Handbook* 2: 243–263. Apollo Books, Stenstrup.
- Szadziewski R., Gwizdalska-Kentzer M. & Gilka W. 2011. Order Diptera, family Ceratopogonidae. In: van Harten A. (ed.) *Arthropod Fauna of the United Arab Emirates* 4: 636–653. Dar Al Ummah Printing, Abu Dhabi.
- Szadziewski R., Borkent A. & Dominiak P. 2012. Ceratopogonidae. In: de Jong H. & Pape T. (eds) *Fauna Europaea: Diptera: Nematocera*. Fauna Europaea version 2.6.2. Available from <http://www.faunaeur.org> [accessed 28 Jan. 2015]
- Tamura K., Peterson D., Peterson N., Stecher G., Nei M. & Kumar S. 2011. MEGA5: Molecular Evolutionary Genetics Analysis using Maximum Likelihood, Evolutionary Distance, and Maximum Parsimony Methods. *Molecular Biology and Evolution* 28: 2731–2739. <http://dx.doi.org/10.1093/molbev/msr121>
- Thienemann A. 1915. Zur Kenntnis der Salzwasser-Chironomiden. *Archiv für Hydrobiologie*, Suppl. 2: 443–482.
- Thienemann A. 1950. Lunzer Chironomiden. Ergebnisse von Untersuchungen der stehenden Gewässer des Lunzer Seengebietes (Niederösterreich). *Archiv für Hydrobiologie*, Suppl. 18: 1–202.
- Thomsen L.C. 1935. New species of New York State Ceratopogonidae. *Journal of the New York Entomological Society* 43: 283–296.

- Tokunaga M. 1963. Some Japanese biting midges breeding in paddy-field water (Diptera, Ceratopogonidae). *Scientific Reports of the Kyoto Prefectural University, Agriculture* 15: 37–49.
- Vaillant F. 1957. Deux Ceratopogonidae nouveaux de l'Algérie. *Bulletin des travaux publiés par la Station d'aquiculture et de pêche de Castiglione, N.S.* 1958 (9): 263–274.
- Valkanov A. 1941. Über das Auffinden von anabiotische Dipteren in Bulgarien. *Godišnik na Sofijskija Universitet* 37: 201–205.
- Waugh W.T. & Wirth W.W. 1976. A revision of the genus *Dasyhelea* Kieffer of the Eastern United States north of Florida (Diptera: Ceratopogonidae). *Annals of the Entomological Society of America* 69: 219–247. <http://dx.doi.org/10.1093/aesa/69.2.219>
- Winnertz J. 1852. Beitrag zur Kenntniss der Gattung *Ceratopogon* Meigen. *Linnaea Entomologica* 6: 1–80. Available from <http://www.biodiversitylibrary.org/item/155194#page/15/mode/1up> [accessed 14 Jun. 2015]
- Wirth W.W. 1956. The heleid midges involved in the pollination of rubber trees in America (Diptera, Heleidae). *Proceedings of the Entomological Society of Washington* 58: 241–250. Available from <http://biodiversitylibrary.org/item/54813#page/613/mode/1up> [accessed 14 Jun. 2015]
- Wirth W.W. 1973. Family Ceratopogonidae. In: Delfinado M.D. & Hardy D.E. (eds) *A Catalog of the Diptera of the Oriental Region, Suborder Nematocera* 1: 346–388. University of Hawaii, Honolulu.
- Wirth W.W. 1978. New species and records of intertidal biting midges of the genus *Dasyhelea* Kieffer from the Gulf of California (Diptera: Ceratopogonidae). *Pacific Insects* 18: 191–198.
- Wirth W.W. & Beaver R.A. 1979. The *Dasyhelea* (Diptera: Ceratopogonidae) from rock pools in the Southwestern United States. *Journal of the North American Benthological Society* 6: 72–76.
- Yu Y.-X. 2008. Notes of new species of *Dasyhelea* and new record of *Stilobezzia* (Diptera: Ceratopogonidae). *Sichuan Journal of Zoology* 27: 165–166.
- Yu Y.-X., Liu J.-H., Liu G.-P., Liu Z.-J., Hao B.-S., Yan G. & Zhao T.-S. 2006. *Ceratopogonidae of China, Insecta, Diptera*. Vols 1–2. Military Medical Science Press, Beijing [2005].
- Zilahi-Sebess G. 1931. Anabiotische Dipteren. *Archiv für Hydrobiologie* 23: 310–329.
- Zilahi-Sebess G. 1936. Die Heleiden-Fauna von Szeged und Umgebung. *Acta Biologica Szegediensis* 4: 35–49.
- Zilahi-Sebess G. 1940. Heleiden aus Ungarn. *Folia Entomologica Hungarica* 5: 10–133.

*Manuscript received: 25 February 2015*

*Manuscript accepted: 1 June 2015*

*Published on: 30 July 2015*

*Topic editor: Koen Martens*

*Desk editor: Danny Eibye-Jacobsen*

Printed versions of all papers are also deposited in the libraries of the institutes that are members of the *EJT* consortium: Muséum National d'Histoire Naturelle, Paris, France; Botanic Garden Meise, Belgium; Royal Museum for Central Africa, Tervuren, Belgium; Natural History Museum, London, United Kingdom; Royal Belgian Institute of Natural Sciences, Brussels, Belgium; Natural History Museum of Denmark, Copenhagen, Denmark.

# ZOBODAT - [www.zobodat.at](http://www.zobodat.at)

Zoologisch-Botanische Datenbank/Zoological-Botanical Database

Digitale Literatur/Digital Literature

Zeitschrift/Journal: [European Journal of Taxonomy](#)

Jahr/Year: 2015

Band/Volume: [0131](#)

Autor(en)/Author(s): Strandberg Jonas, Johanson Kjell Arne

Artikel/Article: [New records of \*Dasyhelea\* Kieffer, 1911 from Sweden, with descriptions of two new species \(Diptera: Ceratopogonidae\) 1-22](#)