



This work is licensed under a Creative Commons Attribution License (CC BY 4.0).

**Research article**

urn:lsid:zoobank.org:pub:32E080F8-A27A-4CBB-BA48-044DF82335A9

**Three new species of *Patrus* Aubé  
with additional records of Gyrinidae from China  
(Coleoptera, Gyrinidae)**

Zulong LIANG<sup>1</sup>, Robert B. ANGUS<sup>2</sup> & Fenglong JIA<sup>3,\*</sup>

<sup>1,3</sup>Institute of Entomology, Life Science School, Sun Yat-sen University, Guangzhou, 510275,  
Guangdong, China.

<sup>2</sup>Department of Life Sciences (Insects), The Natural History Museum, Cromwell Road,  
London SW7 5BD, UK.

\*Corresponding author: [lssjfl@mail.sysu.edu.cn](mailto:lssjfl@mail.sysu.edu.cn); [fenglongjia@aliyun.com](mailto:fenglongjia@aliyun.com)

<sup>1</sup>Email: [liangzl3@mail2.sysu.edu.cn](mailto:liangzl3@mail2.sysu.edu.cn)

<sup>2</sup>Email: [R.angus@rhul.ac.uk](mailto:R.angus@rhul.ac.uk)

<sup>1</sup><https://orcid.org/0000-0002-1289-2697>

<sup>2</sup><https://orcid.org/0000-0002-3860-5617>

<sup>3</sup><https://orcid.org/0000-0003-2391-5038>

<sup>1</sup>urn:lsid:zoobank.org:author:75479591-435D-45B4-9821-234D76B89043

<sup>2</sup>urn:lsid:zoobank.org:author:D14F8A9D-F064-4F67-83AE-70B9384CC880

<sup>3</sup>urn:lsid:zoobank.org:author:AD2EFC37-9653-4965-894A-97317A616A48

**Abstract.** Three new species of *Patrus* Aubé, 1838 are described from China: *Patrus hainanensis* sp. nov. from Hainan; *Patrus jiangxiensis* sp. nov. from Jiangxi; *Patrus shangchuanensis* sp. nov. from Guangdong. Eight species/subspecies of Gyrinidae are recorded from China for the first time: *Metagyrimus vitalisi* (Peschet, 1923), *Orectochilus argenteolimbatus* Peschet, 1923, *Orectochilus murinus* Régimbart, 1892, *Patrus haemorrhous* (Régimbart, 1892), *Patrus marginepennis angustilimbus* (Ochs, 1925) from Yunnan; *Patrus coomani* (Peschet, 1925) from Guangdong; *Patrus procerus* (Régimbart, 1884) from Guangxi; *Patrus annandalei* (Ochs, 1925) from Hainan. Additional faunistic data of Gyrinidae from China are provided. A key to Chinese species of *Patrus* Aubé based on examined specimens from China is given.

**Keywords.** Gyrinidae, *Patrus*, fauna, China, Oriental Region, Palaearctic Region.

Liang Z., Angus R.B. & Jia F. 2021. Three new species of *Patrus* Aubé with additional records of Gyrinidae from China (Coleoptera, Gyrinidae). *European Journal of Taxonomy* 767: 1–39.  
<https://doi.org/10.5852/ejt.2021.767.1481>

## Introduction

Gyrinidae Latreille, 1810 is the second largest family of aquatic Adephaga Schellenberg, 1806, with a total of approximately 900 species assigned to 13 extant genera (Miller & Bergsten 2012; Gustafson & Miller 2017; Miller & Short 2018), of which seven genera and 56 species/subspecies have been recorded from China (Mazzoldi 1995, 2003; Hájek & Fery 2019). Ochs (1929) provided the earliest checklist of Chinese Gyrinidae, which was subsequently cited by Wu (1932). Later on, Cheo (1934) revised the known Gyrinidae from China, with five genera, 31 species included. Since then, several new species were reported from China (Falkenström 1936; Ochs 1936, 1942). Mazzoldi (1995) revised the catalogue of Chinese Gyrinidae, with 46 species/subspecies reported. Since then, four new species of *Patrus* Aubé, 1838 were described from China (Mazzoldi 1998). Recently, Hájek & Fery (2019) revised the catalogue of Palaearctic Gyrinidae, with 51 Chinese species/subspecies recorded, including 27 species of *Patrus*. Despite the studies mentioned above, the taxonomic study of Chinese Gyrinidae is still deficient and in need of a thorough revision.

*Patrus* is a large gyrenid genus, with about 200 valid species occurring mostly in East, Southeast and South Asia (Miller & Bergsten 2012). This genus was first established by Aubé (1838) on the basis of the transverse labrum. However, Régimbart (1883) synonymized it with *Orectochilus* Dejean, 1833 as this character is shared by a considerable number of species of these two genera. Subsequently, *Patrus* was treated as a subgenus of *Orectochilus* by Hatch (1925), diagnosed by its lateral pubescence on the pronotum and elytra. This treatment has been widely accepted since. Recently, *Patrus* was raised to genus level based on phylogenetic results and distinguished from *Orectochilus* by the six flagellomeres in the antenna and the presence of a pseudofrontal ridge, in addition to the glabrous regions on pronotum and elytra proposed by Hatch (Miller & Bergsten 2012).

In recent years, we examined a large quantity of material of Gyrinidae from China, among which three species of *Patrus* new to science and numerous new faunistic records of Gyrinidae were discovered.

## Material and methods

Representative specimens of each species were dissected, and male genitalia were mounted in a drop of glycerol on transparent plastic slides. Photographs of the habitus were taken by using a Zeiss SteREO Discovery V20 microscope or Nikon SM225 microscope, and photographs of the male genitalia were taken by using a Zeiss Axioskop 40 microscope or Zeiss Scope A1 microscope. SEM photographs were taken with a Phenom Prox scanning electronic microscope. All the microscopes mentioned above are located at the Biological Museum of Sun Yat-sen University. Female reproductive tracts were drawn using Adobe Illustrator CC 2014 based on photographs and examination. Anatomical terminology follows Miller & Bergsten (2012) and Miller *et al.* (2008)

Distributional information is mainly based on Mazzoldi (1995, 2003) and Hájek & Fery (2017, 2019). Only unpublished locality data are listed in this paper. Labels written in Chinese were translated into English and marked with square brackets “[ ]”. The taxonomic system used in this study follows Miller & Bergsten (2012) and Gustafson & Miller (2017), and morphological terminology largely follows Mazzoldi (1998) and Miller *et al.* (2008).

## Institutional abbreviations

- BMNH = Natural History Museum (NMHUK) [formerly British Museum of Natural History],  
London, UK  
IZCAS = Institute of Zoology, Chinese Academy of Sciences, Beijing, China  
MNHN = Muséum national d’histoire naturelle, Paris, France  
SHTU = Shanghai Normal University, Shanghai, China

SYSU = Sun Yat-Sen University, Guangzhou, China

In order to compare them with the Chinese material, we checked a male and a female from the type series of *Orectochilus murinus* Régimbart, 1892 from Sikkim, and other material identified by Régimbart deposited in BMNH. We also checked photographs of a syntype of *Patrus haemorrhous* (Régimbart, 1891) in MNHN, provided by Antoine Mantilleri.

## Results

### *Description of new species*

Class Insecta Linnaeus, 1758  
Order Coleoptera Linnaeus, 1758  
Family Gyrinidae Latreille, 1810  
Subfamily Gyrininae Latreille, 1810  
Tribe Orectochilini Régimbart, 1882  
Genus *Patrus* Aubé, 1838

#### *Patrus hainanensis* sp. nov.

urn:lsid:zoobank.org:act:1001055C-63EB-4EC7-A1E4-92FED32C3A58

Figs 1A–C, 3, 6A

### Diagnosis

This species can be diagnosed by the following characters combined: 1) labrum less than  $\frac{1}{3}$  as long as wide, with anterior margin straight; 2) pronotal setose region anteriorly expanded inward onto pronotal disc to middle of dorsal eye; 3) punctation absent on head and pronotum; 4) punctures on surface of elytral glabrous region elongate transverse or oblique, several narrow longitudinal stripes shown on elytral glabrous region, micro-reticulation on elytral glabrous region weak and subtle, very elongate (Fig. 3A, G); 5) in lateral view elytral pubescent area in basal  $\frac{1}{2}$  distinctly narrower than on pronotum, expanded to similar width apically (Fig. 1C); 6) elytral apex rounded, epipleural angle acute; 7) female elytra similar to those of male; 8) male protarsus as in Fig. 3B–C, adhesive pallet with few adhesive setae and large suction discs,  $\frac{2}{3}$  length of protibia; 9) aedeagus as in Fig. 3D, median lobe shorter than parameres, extending to  $\frac{3}{4}$  of their length, strongly laterally expanded in apical  $\frac{1}{3}$ ; 10) female reproductive tract as in Fig. 6A, spermatheca elongate, reniform; fertilization duct broad and flattened, forming several compact hairpin hoops.

This species is a member of Group 2 in Vazirani's (1984) key (Group V in the key of Ochs 1928). The few adhesive setae and large suction discs on the male protarsus and characteristic elytral surface sculpture can easily distinguish this species from other known Chinese species of this group. This species is similar to *P. coomani* (Peschet, 1925), but can still be easily separated by its narrow setose region at the elytral base and by the median lobe strongly laterally expanded in apical  $\frac{1}{3}$ .

### Etymology

This species is named after the type locality 'Hainan Province'.

### Material examined

#### Holotype

CHINA – Hainan • ♂; 海南尖峰岭五分区 [Hainan, Jianfengling Mt., fifth division]; 8 Jul. 1981; 华立中采 [Hua Lizhong leg.]; SYSU.

### Paratypes

CHINA – Hainan • 5 ♂♂, 2 ♀♀; same collection data as for holotype; SYSU • 1 ♂, 2 ♀♀; 海南尖峰岭五分区 [Hainan, Jianfengling Mt., fifth division,]; 5 Jul. 1981; 张新府采 [Zhang Xinfu leg.]; SYSU • 1 ♂; 海南尖峰岭五分区 [Hainan, Jianfengling Mt., fifth division]; 7 Jul. 1981; 黄云采 [Huang Yun leg.]; SYSU • 1 ♂, 3 ♀♀; 海南尖峰岭五分区 [Hainan, Jianfengling Mt., fifth division]; 7 Jul. 1981; 陈宁美采 [Chen Ningmei leg.]; SYSU • 1 ♂, 1 ♀; 海南尖峰岭五分区 [Hainan, Jianfengling Mt., fifth division]; 7 Jul. 1981; 刘元福采 [Liu Yuanfu leg.]; SYSU • 9 ♂♂, 8 ♀♀; 海南尖峰岭三分区 [Hainan, Jianfengling Mt., third division]; 7 Jul. 1981; 李宗冉采 [Li Zongran leg.]; SYSU • 10 ♂♂, 6 ♀♀; 海南尖峰岭五分区 [Hainan, Jianfengling Mt., fifth division]; 7 Jul. 1981; 梁少营采 [Liang Shaoying leg.]; SYSU • 1 ♂, 5 ♀♀; 海南尖峰岭五分区 [Hainan, Jianfengling Mt., fifth division]; 8 Jul. 1981; 何国锋采 [He Guofeng leg.]; SYSU • 4 ♂♂, 6 ♀♀; 海南尖峰岭五分区 [Hainan, Jianfengling Mt., fifth division]; 8 Jul. 1981; 雷群邦采 [Lei Qunbang leg.]; SYSU • 1 ♂; 海南尖峰岭五分区 [Hainan, Jianfengling Mt., fifth division]; 8 Jul. 1981; 李逸昭采 [Li Yizhao leg.]; SYSU • 1 ♀; 海南尖峰岭五分区 [Hainan, Jianfengling Mt., fifth division]; 8 Jul. 1981; 陈润吉采 [Chen Runji leg.]; SYSU • 2 ♂♂, 2 ♀♀; 海南尖峰岭五分区 [Hainan, Jianfengling Mt., fifth division]; 29 Jul. 1983; 陈焕强采 [Chen Huanqiang leg.]; SYSU • 1 ♂, 3 ♀♀; 海南尖峰岭五分区 [Hainan, Jianfengling Mt., fifth division]; 29 Jul. 1983; 江世贵采 [Jiang Shigui leg.]; SYSU • 1 ♂, 3 ♀♀; 海南尖峰岭五分区 [Hainan, Jianfengling Mt., fifth division]; 8 Sep. 1983; 保护站采 [Reserve station leg.]; SYSU • 1 ♀; 海南尖峰岭天池 [Hainan, Jianfengling Mt., Tianchi]; 8 Sep. 1983; 保护站采 [Reserve station leg.]; SYSU.

### Description

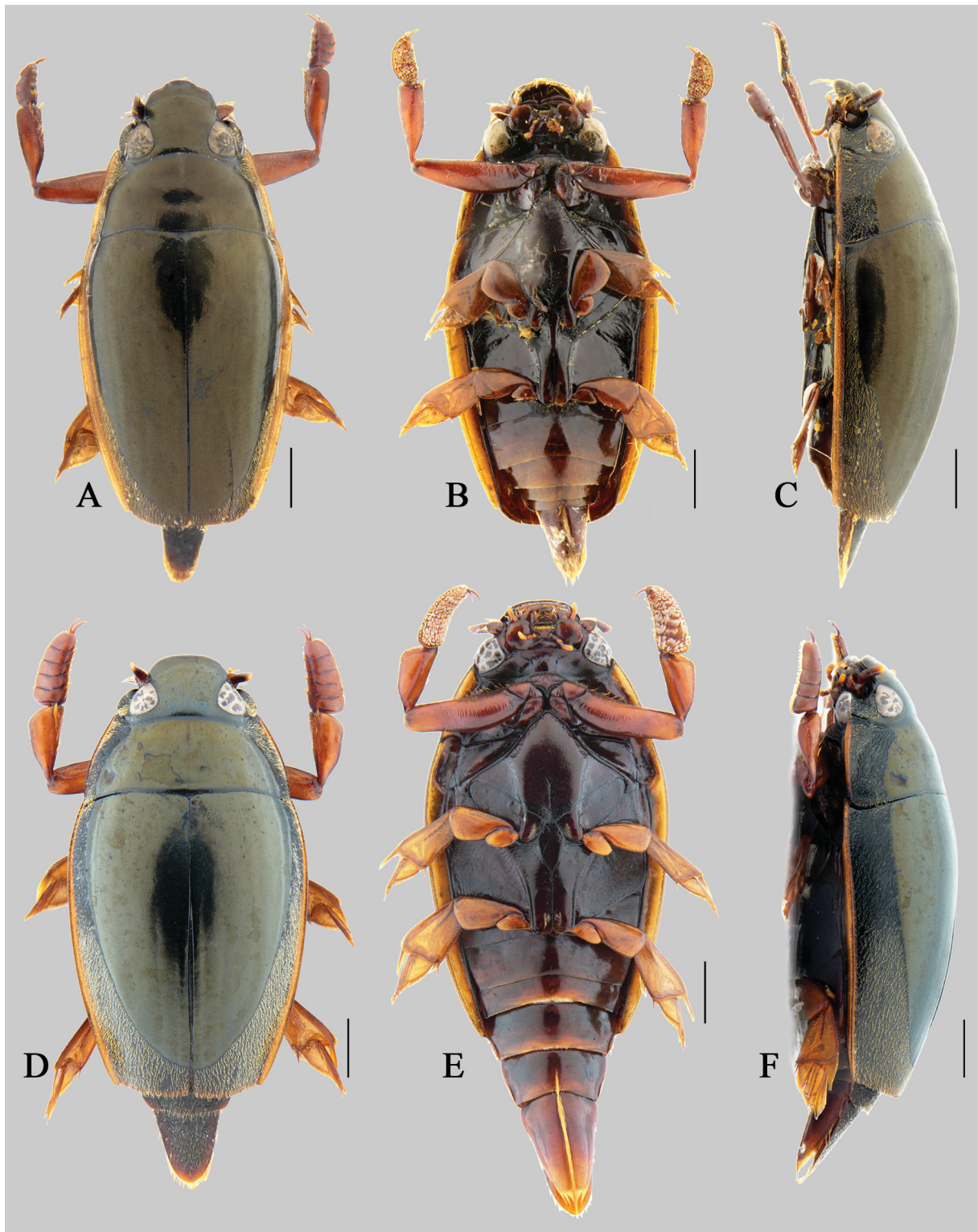
MEASUREMENTS. Holotype: 7.0 mm in length, 3.0 mm in width; male: 6.9–9.0 mm in length, 3.0–3.8 mm in width; female: 7.0–8.5 mm in length, 3.2–3.4 mm in width.

HABITUS AND COLOUR (Fig. 1A–C). Medium-sized species, oblong-oval in shape, widest just before middle, moderately convex in lateral view. Dorsal side black with strong bronze sheen, stronger on elytron than on head and pronotum. Pronotum and elytra with yellow lateral borders. Ventral side mostly black, with legs and rear of abdomen ferruginous, epipleuron yellow.

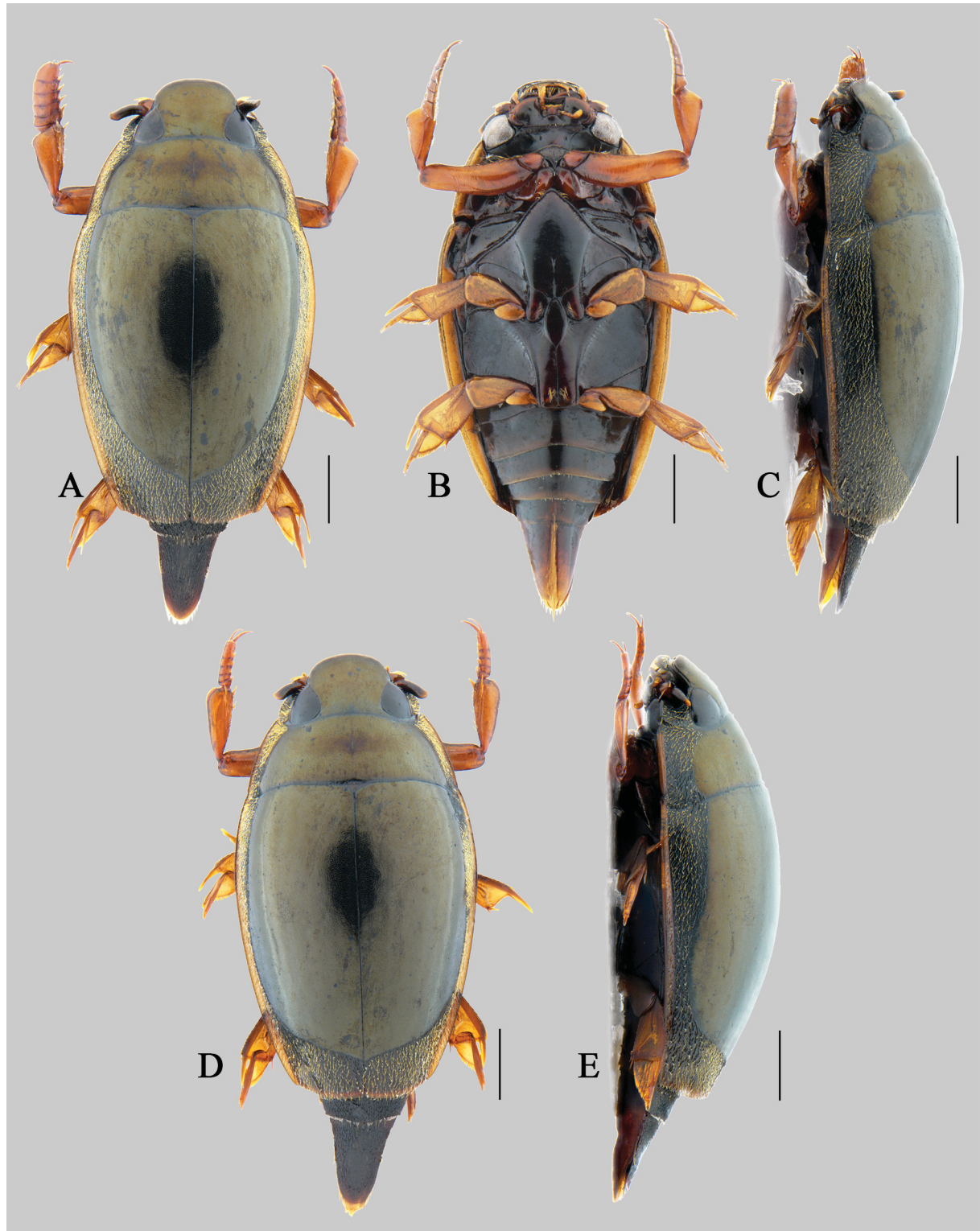
HEAD. Labrum wide and short,  $\frac{1}{3}$  as long as wide, with anterior margin straight; anterior surface smooth; posterior surface with strong punctate-tomentose. Micro-reticulation on surface of clypeus distinct with polygonal meshes. Micro-reticulation on frons and vertex rather distinct, with meshes transverse or oblique (Fig. 3E), gradually obliterated backwards. Punctuation absent on head.

THORAX. Pronotum regularly attenuated from base to apex, with margins weakly convex. Surface of pronotal glabrous region with weak and subtle micro-reticulation formed by elongate transverse or oblique meshes (Fig. 3F); punctuation absent on pronotum. Lateral pubescence anteriorly expanded inward onto pronotal disc to middle of dorsal eye, posteriorly narrower and parallel to lateral borders. Scutellum wide and short,  $\frac{1}{2}$  as long as wide, with surface smooth. Lateral pubescence on elytra anteriorly strongly reduced, distinctly narrower than on basal pronotum until middle of elytra, then abruptly expanded and reaching suture just before truncature (Fig. 3A). Pronoto-elytral glabrous region irregular oval, terminating posteriorly with obtuse and wide angle. Surface of elytral glabrous region covered by distinct and rather dense punctuation formed by elongate transverse or oblique striae and with several narrow longitudinal stripes, micro-reticulation invisible under optical microscope, but visible under SEM, similar to that on pronotum (Fig. 3G). Striae at outer side of elytra much longer than that at inner side. Truncature of elytra straight; epipleural angle almost  $90^\circ$ , acute; sutural angle almost  $90^\circ$ , narrowly rounded.





**Fig. 1.** Habitus. **A–C.** *Patrus hainanensis* sp. nov., ♂, paratype (SYSU). **D–F.** *Patrus jiangxiensis* sp. nov., ♂, paratypes (SYSU). **A.** Dorsal view. **B.** Ventral view. **C.** Lateral view. **D.** Dorsal view. **E.** Ventral view. **F.** Lateral view. Scale bars = 1 mm.



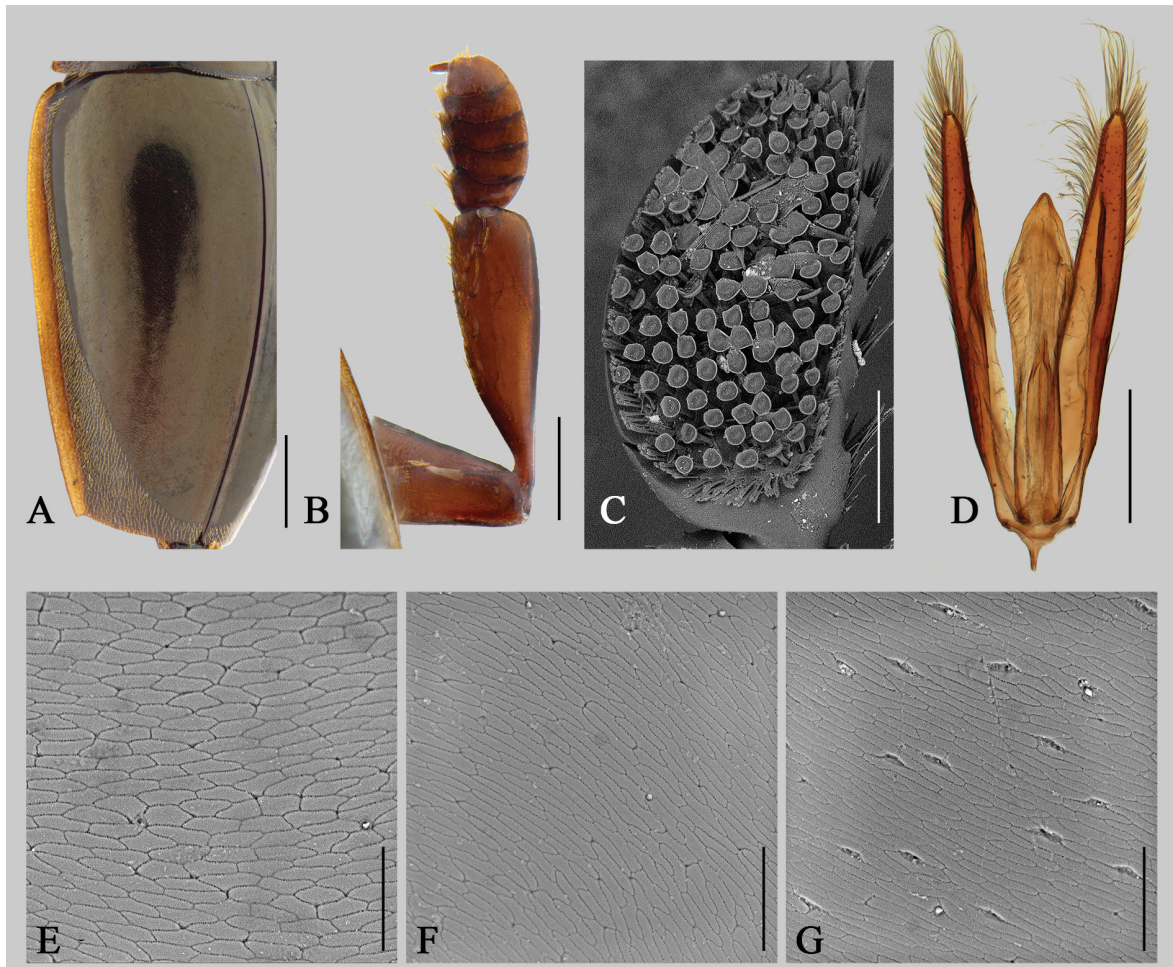
**Fig. 2.** Habitus of *Patrus shangchuanensis* sp. nov., paratypes (SYSU). **A.** ♂, dorsal view. **B.** ♂, ventral view. **C.** ♂, lateral view. **D.** ♀, dorsal view. **E.** ♀, lateral view. Scale bars = 1 mm.



MALE GENITALIA (Fig. 3D). Median lobe shorter than parameres, extending  $\frac{3}{4}$  of their length, basal half parallel, strongly laterally expanded in apical  $\frac{1}{3}$ , apical part regularly narrowed toward apex, apex point shortly narrowed.

FEMALE REPRODUCTIVE TRACT (Fig. 6A). Gonocoxosternite elongate, apically narrowly rounded, anterior process elongate; laterotergite elongate, slightly curved apically; vagina elongate; spermatheca elongate, reniform; fertilization duct broad and flattened, forming several compact hairpin hoops; accessory gland short and slender, inserting dorsally on bursa.

SEXUAL DIMORPHISM. This species exhibits very little sexual dimorphism. Protibia of both sexes rather short and wide, basal third regularly expanded from base to apex, apical two-thirds subparallel, antero-external angle rather obliterated. Protarsus in male expanded, sub-oval, slightly more than  $\frac{1}{2}$  as long as protibia, slightly wider (Fig. 3B), inner margin straight, external margin convex, ventral side with large sucking disc on top of adhesive setae (Fig. 3C), while not expanded and without adhesive setae in female.



**Fig. 3.** *Patrus hainanensis* sp. nov., ♂ (SYSU). **A.** Left elytron, paratype. **B.** Front leg., paratype **C.** Front tarsus, paratype. **D.** Genitalia, holotype. **E.** Surface sculpture on head, paratype. **F.** Surface sculpture on pronotum, paratype. **G.** Surface sculpture on elytra, paratype. Scale bars: A = 1 mm; B, D = 0.5 mm; C = 200  $\mu$ m; E–G = 30  $\mu$ m.

## Distribution

Only known from type locality Jianfengling Mt, Hainan Province, China.

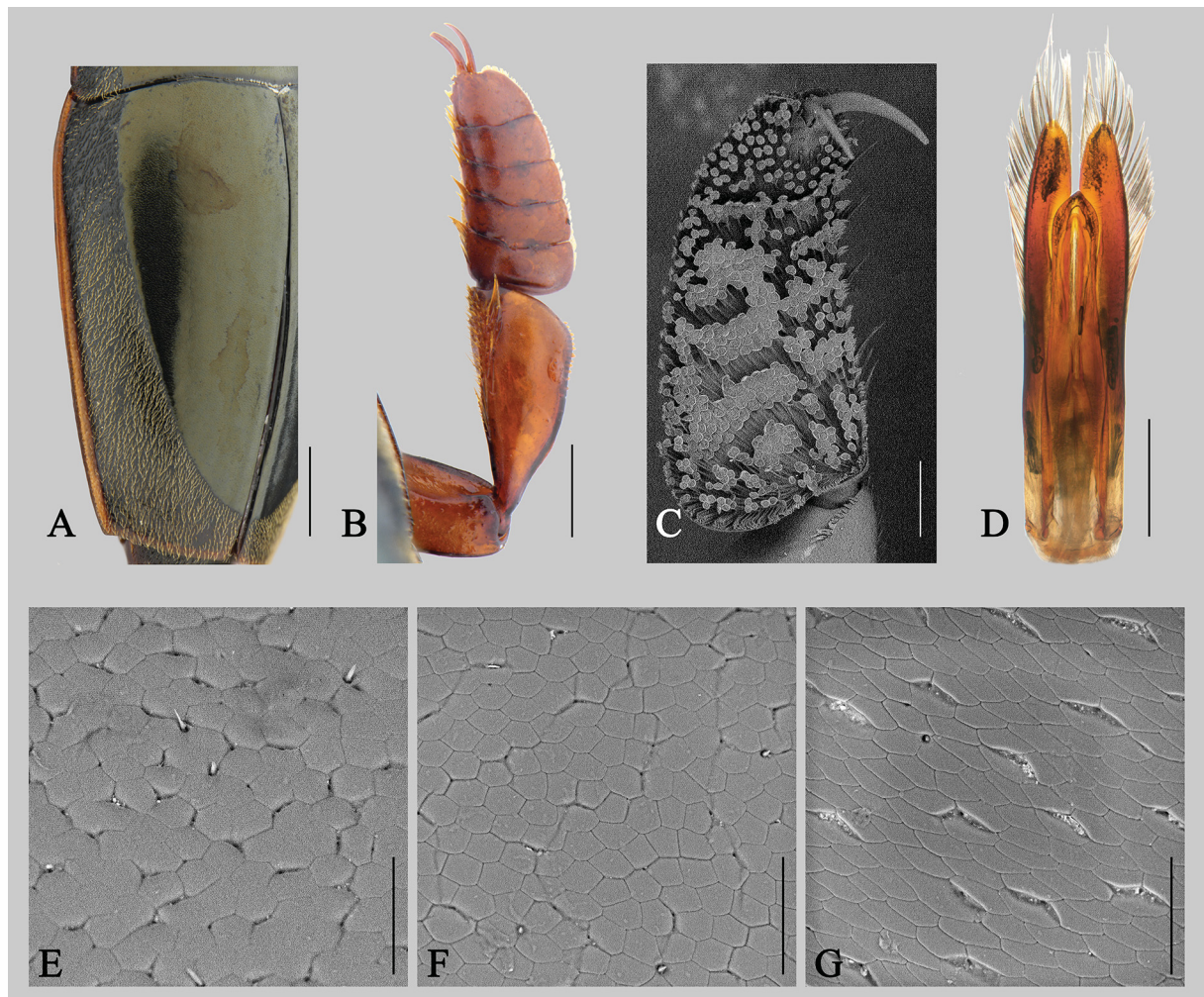
### *Patrus jiangxiensis* sp. nov.

urn:lsid:zoobank.org:act:74887BE8-29AD-43F6-8E93-84770844D59C

Figs 1D–F, 4, 6B

## Diagnosis

This species can be diagnosed by the following characters combined: 1) labrum less than  $\frac{1}{3}$  as long as wide, with anterior margin straight; 2) pronotal setose region anteriorly expanded inward onto pronotal disc to external third of dorsal eye; 3) dorsal surface with strong and dense micro-punctuation, much stronger on elytron (Fig. 4E–G); 4) pronoto-elytral glabrous region regular oval, terminating posteriorly with an obtuse but not very wide angle, slightly wider in female (Fig. 4A); 5) elytral apex straight, epipleural angle obtuse; 6) male protarsus as in Fig. 4B–C, adhesive pallet with dense adhesive setae and



**Fig. 4.** *Patrus jiangxiensis* sp. nov., ♂ (SYSU). **A.** Left elytron, paratype. **B.** Front leg, paratype. **C.** Front tarsus, paratype. **D.** Genitalia, holotype. **E.** Surface sculpture on head, paratype. **F.** Surface sculpture on pronotum, paratype. **G.** Surface sculpture on elytra, paratype. Scale bars: A = 1 mm; B, D = 0.5 mm; C = 200  $\mu$ m; E–G = 30  $\mu$ m.



small suction discs, distinctly longer than protibia; 7) aedeagus as in Fig. 4D, median lobe broad, shorter than parameres, extending  $\frac{4}{5}$  of their length; 10) female reproductive tract as in Fig. 6B, spermatheca elongate, C-shaped; fertilization duct slender, forming several loose hairpin hoops.

This species is also a member of Group 2 in Vazirani's (1984) key. It can be further assigned to the *wui*-subgroup proposed by Mazzoldi (1998) by the very large protarsus in the male. This species closely resembles *Patrus wangi* (Mazzoldi, 1998) described from Zhejiang and Anhui. These two species both have a well-developed protarsus which is distinctly longer than the protibia. However, it can be easily distinguished from the latter by the shape of the protarsus in the male (Fig. 4B) and of the elytral glabrous region in the female. Besides, it is larger in size, the truncature of the protibia is more oblique and the median lobe of the aedeagus lacks the hook-like process (Fig. 4D).

The new species is also similar to *P. wui* (Ochs, 1932). Compared to *P. wui*, this species is larger in size, the protarsus is also larger, longer than the protibia, the glabrous region is less broad posteriorly, and the median lobe of the aedeagus is broader.

### Etymology

This species is named after the type locality 'Jiangxi Province'.

### Material examined

#### Holotype

CHINA – **Jiangxi** • ♂; Jiangxi Prov. Pingxiang City, Luxi County, Wugongshan; 27°47'53" N, 114°14'83" E; alt. 520 m; 22–24 Sep. 2016; Ruijuan Zhang and Yudan Tang leg.; SYSU.

#### Paratypes

CHINA – **Jiangxi** • 30 ex.; same collection data as for holotype; SYSU • 2 ♀♀; Jiangxi Prov. Shangyou County, Guanggushan (光姑山) Nature Reserve; 25°54'55" N, 114°03'09" E; alt. 183 m; 19–21 Sep. 2016; Ruijuan Zhang and Yudan Tang leg.; SYSU • 14 ex.; 江西靖安县观音岩 [Guanyinyan, Jiangxi]; 29.04 N, 115.14 E; alt. 690 m; 20 Jul. 2014; 林仁超采 [Lin Renchao leg.]; SYSU • 1 ♀; 江西靖安县三爪仑乡白水洞景区 [Jiangxi, Jing'an, Sanzhualun, Baishuidong Scenic Area]; 29.04 N, 115.11 E; alt. 660 m; 22 Jul. 2014; 林仁超采 [Lin Renchao leg.]; SYSU • 1 ♂; 江西井冈山白银湖 [Jiangxi, Jinggangshan, Baiyihu]; alt. 880 m; 23 Apr. 2011; 采集人: 赵爽 [Zhao Shuang leg.]; SYSU • 1 ♂, 3 ♀♀; 江西井冈山湖羊塔 [Jiangxi, Jinggangshan, Huyangta]; 28 Apr. 2011; 采集人: 贾凤龙 [Jia Fenglong leg.]; SYSU • 1 ♂; 江西井冈山 [Jiangxi, Jinggangshan]; 1 Apr. 2011; 李韵采 [Li Yun leg.]; SYSU • 1 ♂; W. Jiangxi, Ji'an City, Jinggangshan, Jingzhu Shan; 26°29'45" N, 114°04'45" E; alt. 1130 m; 2 Aug. 2014; Chen, Hu, Lv and Yu leg.; in the stream; SHNU.

### Description

MEASUREMENTS. Holotype: 8.5 mm in length, 3.9 mm in width; male: 8.4–9.8 mm in length, 3.9–4.0 mm in width; female: 7.0–8.6 mm in length, 3.1–3.9 mm in width.

HABITUS AND COLOUR (Fig. 1D–F). Medium-sized species, oblong-oval in shape, widest just before middle, moderately convex in lateral view. Dorsal side black with strong bronze sheen. Pronotum and elytra with yellow lateral borders. Ventral side mostly reddish brown to dark brown, with legs and epipleura yellow to reddish yellow, last abdomen ferruginous.

HEAD. Labrum wide and short,  $\frac{1}{3}$  as long as wide, with anterior margin straight; anterior surface smooth; posterior surface with strong punctate-tomentose. Clypeus slightly shorter than labrum, with anterior margin straight. Fronto-clypeal suture distinct. Surface of clypeus with weak micro-reticulation anteriorly, while distinct posteriorly, among meshes of micro-reticulation with dense irregular punctation. Surface



on frons and vertex with strong micro-reticulation formed by isodiametric polygonal meshes, gradually obliterated backwards. Amongst meshes of the micro-reticulation strong irregular-shaped punctation (Fig. 4E).

**THORAX.** Pronotum regularly attenuated from base to apex, with margins weakly convex. Surface of pronotal glabrous region with distinct micro-reticulation formed by isodiametric polygonal meshes and strong irregular punctation (Fig. 4F), much of which merges in rows to form distinct wrinkles. Lateral pubescence anteriorly expanded inward onto pronotal disc to external third of eye, posteriorly weakly reduced backwards in concave line. Scutellum wide and short, less than  $\frac{1}{2}$  as long as wide, with surface smooth. Pronoto-elytral glabrous region regular oval, terminating posteriorly with obtuse but not very wide angle (Fig. 4A). Lateral pubescent band in male anteriorly as wide as pronotal one, subparallel to elytral margin backwards until middle of elytron, then regularly expanded, reaching suture at about one-tenth of distance from truncature; in female anteriorly as wide as pronotal one, parallel to elytral margin backwards until  $\frac{2}{3}$  of elytron, then regularly expanded, reaching suture at about  $\frac{1}{12}$  of distance from truncature, so that elytral glabrous region in female slightly wider. Surface of elytral glabrous region covered by weak micro-reticulation formed by transverse or oblique and slightly elongate polygonal meshes and by strong punctation formed by short transverse or oblique striae (Fig. 4G). Truncature of elytra straight; epipleural angle obtuse, narrowly rounded, sutural angle almost  $90^\circ$ , narrowly rounded.

**MALE GENITALIA** (Fig. 4D). Median lobe shorter than parameres extending  $\frac{4}{5}$  of their length, basal third parallel, then slightly narrowed until apical third, sub-apex parallel, apical part regularly narrowed, apex point shortly narrowed.

**FEMALE REPRODUCTIVE TRACT** (Fig. 6B). Gonocoxosternite elongate, apically narrowly protruding, anterior process short; laterotergite elongate, slightly narrowed towards apex; vagina elongate; spermatheca elongate, C-shaped, strongly curved; fertilization duct slender, forming several loose hairpin hoops; accessory gland short and slender, inserting dorsally on bursa.

**SEXUAL DIMORPHISM.** Male slightly larger in size than female; protibia in male short and wide, short triangular, strongly expanded exteriorly towards apex, apex of protibia obliquely truncate, antero-external angle obtuse, rounded (Fig. 4B), while shorter and less expanded, and apex straight-truncate in female. Protarsus of male large, strongly expanded, distinctly longer than protibia, slightly narrowed towards apex, ventral side with dense adhesive setae and small suction discs (Fig. 4C); elytral glabrous region slightly broader posteriorly in female.

## Distribution

Known from Pingxiang, Shangyou, Jingxi and Jinggangshan in Jiangxi Province, China.

### *Patrus shangchuanensis* sp. nov.

urn:lsid:zoobank.org:act:6EE82957-25AB-4EE0-90AC-3F5250BCD0B9

Figs 2, 5, 6C

## Diagnosis

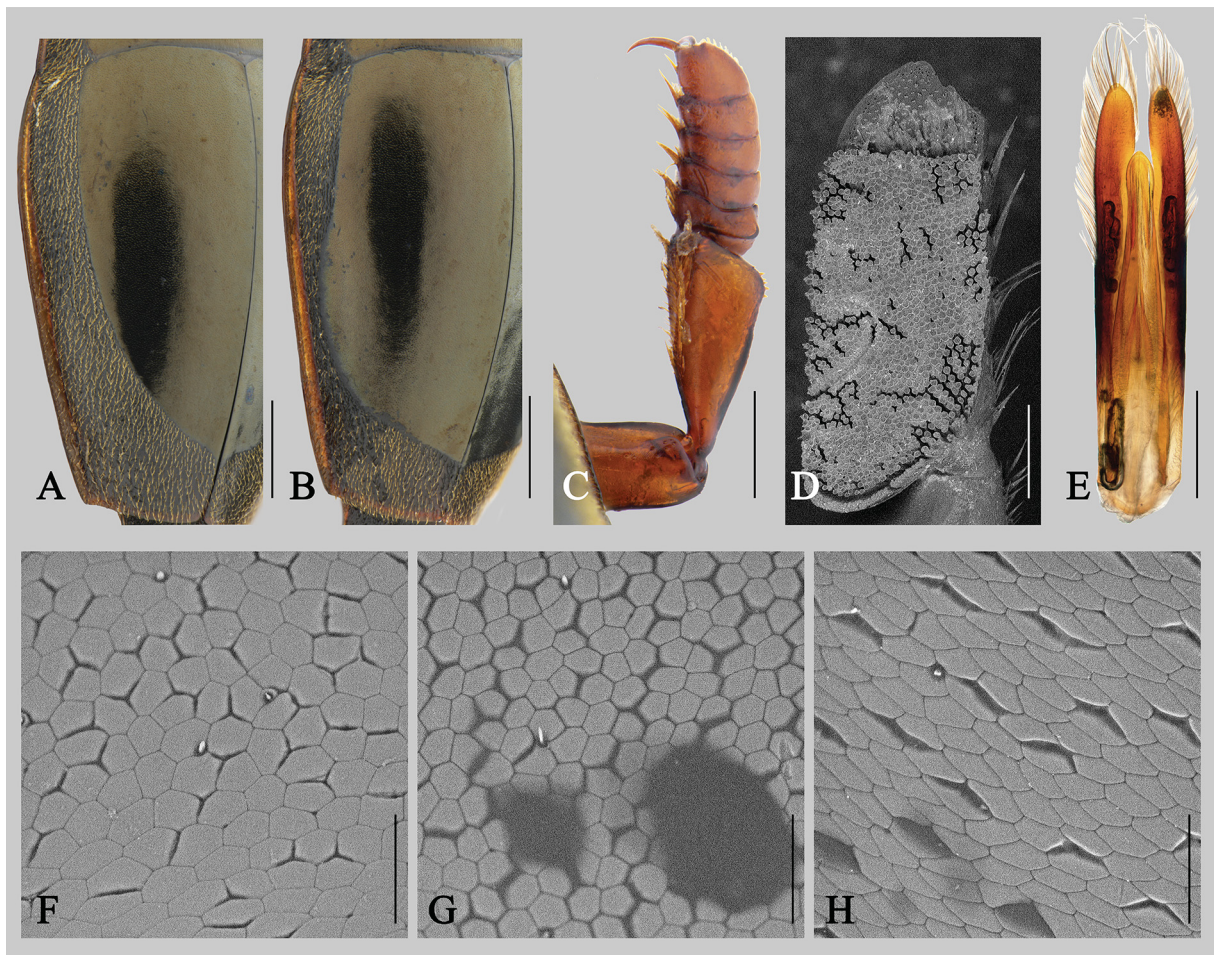
This species can be diagnosed by the following characters combined: 1) labrum less than  $\frac{1}{3}$  as long as wide, with anterior margin straight; 2) pronotal setose region anteriorly expanded inward onto pronotal disc to external third of dorsal eye; 3) dorsal surface with strong and dense micro-punctation, much stronger on elytron (Fig. 5F–H); 4) pronoto-elytral glabrous region regularly oval in male, terminating posteriorly with obtuse but not very wide angle, with two postero-lateral expansions in females (Fig. 5A–B); 5) elytral apex straight, epipleural angle obtuse; 6) male protarsus as in Fig. 5C–D, adhesive pallet

with dense adhesive setae and small suction discs, almost as long as protibia; 7) aedeagus as in Fig. 5E, median lobe shorter than parameres, extending  $\frac{4}{5}$  length, apical part notably narrowed, sub-apically slightly constricted; 10) female reproductive tract as in Fig. 6C, spermatheca elongate, C-shaped; fertilization duct rather slender and flattened, forming several loose hairpin hoops.

This species is also a member of the *wui*-subgroup. It closely resembles *Patrus wangi* (Mazzoldi, 1998) and *P. wui* (Ochs, 1932). All these three species show a distinct sexual dimorphism in the shape of the elytral glabrous region. Two postero-lateral expansions are shown in female of both, the new species and *P. wangi* but much weaker in this species than in *P. wangi* so that the lateral pubescence on the elytra is visible from above throughout (Figs 2D, 5B). Besides, the protarsus in the male is less developed, at most as long as protibia in this species (Fig. 5C–D). The elytral glabrous region in the female is much broader posteriorly than in male *P. wui*, whereas postero-lateral expansions are not present in this species. The male genitalia of these three species are also distinctly different from each other.

### Etymology

This species is named after the type locality ‘Shangchuan Island’.



**Fig. 5.** *Patrus shangchuanensis* sp. nov. (SYSU). **A.** ♂, paratype, left elytron. **B.** ♀, paratype, left elytron. **C.** ♂, paratype, front leg. **D.** ♂, paratype, front tarsus. **E.** ♂, holotype, genitalia. **F.** ♂, paratype, surface sculpture on head. **G.** ♂, paratype, surface sculpture on pronotum. **H.** ♂, paratype, surface sculpture on elytra. Scale bars: A–B = 1 mm; C, E = 0.5 mm; D = 200 μm; F–H = 30 μm.

## Material examined

### Holotype

CHINA – Guangdong • ♂; 广东省台山市上川岛猕猴省级自然保护区 [Guangdong, Taishan City, Shangchuan Island Macaque Provincial Nature Reserve]; 21°44'51" N, 119°49'36" E; alt. 50 m; 17 Jan. 2019; 贾凤龙, 梁祖龙采 [Jia Fenglong and Liang Zulong leg.]; SYSU.

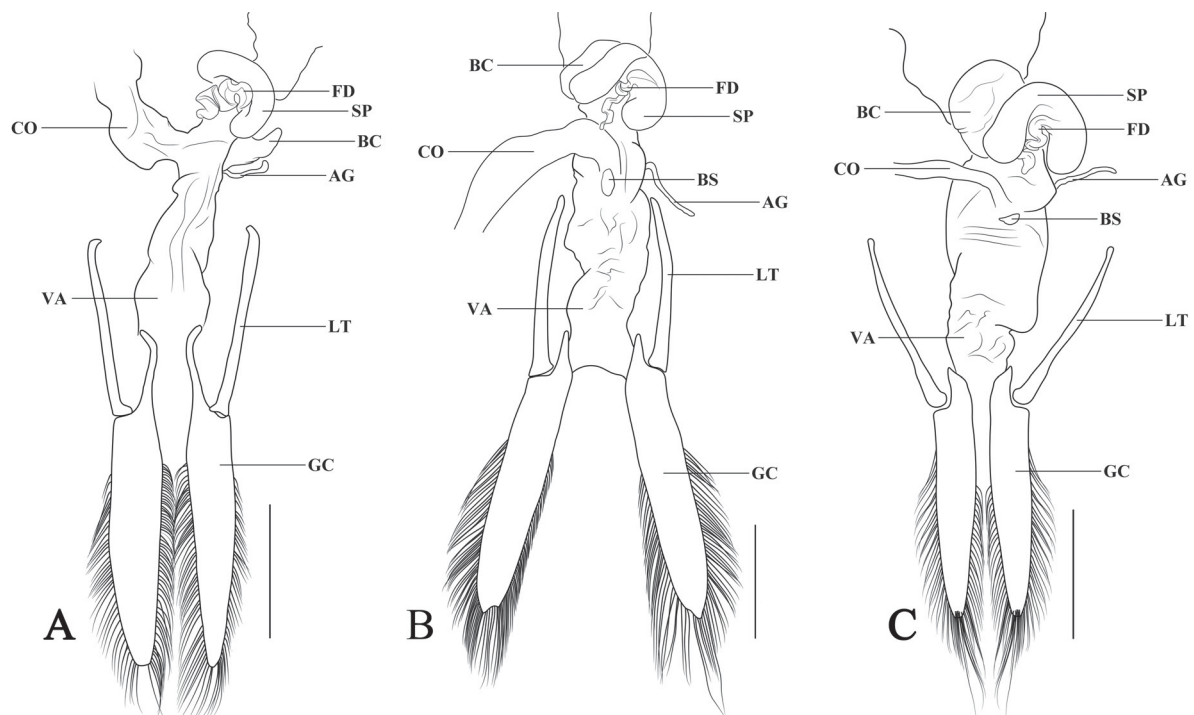
### Paratypes

CHINA – Guangdong • 13 ♂♂, 12 ♀♀; same collection data as for holotype; SYSU • 5 ♂♂, 3 ♀♀; 广东省台山市上川岛猕猴省级自然保护区 [Guangdong, Taishan City, Shangchuan Island Macaque Provincial Nature Reserve]; 21°44'36" N, 112°50'33" E; alt. 10 m; 18 Jan. 2019; 贾凤龙, 梁祖龙采 [Jia Fenglong and Liang Zulong leg.]; SYSU • 1 ♂; 广东省台山市上川岛猕猴省级自然保护区石背潭 [Guangdong, Taishan City, Shangchuan Island Macaque Provincial Nature Reserve, Shibeitang]; 21°46'1" N, 112°49'2" E; alt. 20 m; 19 Jan. 2019; 贾凤龙, 梁祖龙采 [Jia Fenglong and Liang Zulong leg.]; SYSU.

## Description

MEASUREMENTS. Holotype: 7.7 mm in length, 3.6 mm in width; male: 7.1–8.6 mm in length, 3.2–3.6 mm in width; female: 6.9–7.6 mm in length, 2.9–3.4 mm in width.

HABITUS AND COLOUR (Fig. 2A–E). Medium-sized species, oval in shape, widest just before middle, moderately convex in lateral view. Dorsal side black with strong bronze sheen. Pronotum and elytra with yellow lateral borders. Ventral side mostly black, with legs and epipleura yellow to reddish yellow.



**Fig. 6.** Female reproductive tract of new species, paratype with the same collection data as for holotype (SYSU). **A.** *Patrus hainanensis* sp. nov. **B.** *Patrus jiangxiensis* sp. nov. **C.** *Patrus shangchuanensis* sp. nov. Abbreviations: AG = accessory gland; BC = bursa copulatrix; BS = bursa sclerite; CO = common oviduct; FD = fertilization duct; GC = gonocoxa; LT = laterotergite; SP = spermatheca; VA = vagina. Scale bars = 500  $\mu$ m.



**HEAD.** Labrum wide and short, slightly less than  $\frac{1}{3}$  as long as wide, with anterior margin straight; anterior surface smooth; posterior surface strongly punctate-tomentose. Clypeus slightly shorter than labrum, with anterior margin slightly concave. Fronto-clypeal suture distinct. Surface of clypeus with strong micro-reticulation formed by isodiametric polygonal meshes, among meshes with strong and dense punctation. Surface of frons and vertex with strong micro-reticulation formed by isodiametric polygonal meshes, gradually obliterated backwards. Amongst meshes of micro-reticulation strong irregular-shaped punctation (Fig. 5F).

**THORAX.** Pronotum regularly attenuated from base to apex, with margins weakly convex. Surface of pronotal glabrous region with strong irregular-shaped punctation, some of which merges in rows to form distinct wrinkles (Fig. 5G), micro-reticulation on median disc strong, formed by isodiametric polygonal meshes, obliterated towards margins. Lateral pubescence anteriorly expanded inward onto pronotal disc to external third of dorsal eye, posteriorly weakly reduced backwards in concave line. Scutellum wide and short, less than  $\frac{1}{2}$  as long as wide, with surface smooth. Pronoto-elytral glabrous region in male regularly oval. Lateral pubescent area in male anteriorly as wide as on pronotum, parallel to elytral margin backwards until the middle of elytron, then regularly expanded, reaching suture at about  $\frac{1}{8}$  to truncature (Fig. 5A). Pronoto-elytral glabrous region in female in characteristic shape, with weak postero-lateral expansion at each side (Fig. 5B). Lateral pubescence in female anteriorly two-fifths slightly narrowed backwards, then regularly narrowed in concave line, apical fifth suddenly expanded, reaching suture at same position as in male. Surface of elytral glabrous region covered by distinct micro-reticulation formed by transverse or oblique and slightly elongate polygonal meshes and by strong punctation formed by short transverse or oblique striae (Fig. 5H). Truncature of elytra straight; epipleural angle obtuse, narrowly rounded, sutural angle almost right angle, narrowly rounded.

**FRONT LEGS.** Protibia in male short and wide, short triangular, strongly expanded exteriorly towards apex, apex of protibia obliquely truncate, antero-external angle obtuse, narrowly rounded (Fig. 5C). Protibia in female slenderer than in male. Protarsus of male large, strongly expanded, almost as long as protibia, basal four-fifths subparallel, apical fifth regularly narrowed (Fig. 5D).

**MALE GENITALIA** (Fig. 5E). Median lobe notably shorter than parameres, basal third parallel, then slightly narrowed backwards until apical third, slightly expanded subapically, apical part regularly narrowed, apex form obtuse angle.

**FEMALE REPRODUCTIVE TRACT** (Fig. 6C). Gonocoxosternite elongate, apically narrowed, anterior process short and broad; laterotergite elongate, slightly narrowed towards apex; vagina elongate; bursa rather broad; spermatheca elongate, C-shaped, strongly curved; fertilization duct rather slender and flattened, forming several loose hairpin hoops; accessory gland short and slender, inserting dorsally on bursa.

**SEXUAL DIMORPHISM.** Protibia in male short and wide, short triangular, strongly expanded exteriorly towards apex, apex of protibia obliquely truncate, antero-external angle obtuse, narrowly rounded (Fig. 5C), while slender and less expanded, and apex straight-truncate in female. Protarsus of male large, strongly expanded, almost as long as protibia, basal four-fifths subparallel, apical fifth regularly narrowed, ventral side with dense adhesive setae and small suction disks (Fig. 5D); elytral glabrous region regularly oval in male and with two weak postero-lateral expansion in female.

### **Distribution**

Only known from the type locality Shangchuan Island, Guangdong Province, China.

## New faunistic records of Gyrinidae

Subfamily Gyrininae Latreille, 1810

Tribe Dineutini Desmarest, 1851

Genus *Dineutus* Macleay, 1825

### *Dineutus australis* (Fabricius, 1775)

*Gyrinus australis* Fabricius, 1775: 235.

*Gyrinus rufipes* Fabricius, 1801: 276.

*Gyrinus dentipennis* Macleay, 1825: 30.

*Gyrinus limbatus* Macleay, 1825: 30.

*Gyrinus iridis* Hope, 1842: 48.

*Dineutus dentatus* Suffrian, 1842: 256.

*Dineutes janthinus* Blanchard, 1843: pl. 4.

*Dineutus leucopoda* Montrouzier, 1860: 245.

### Material examined

CHINA – **Hainan** • 2 ♀♀; 广东海南 [Guangdong Hainan]; 5 Jun. 1957; 赵养昌采 [Zhao Yangchang leg.]; SYSU • 2 ♀♀; 海南岛尖峰岭 [Hainan Is., Jianfengling Mt.]; 19 Dec. 1963; 彭统序采 [Peng Tongxu leg.]; SYSU • 2 ex.; 广东海南三亚 [Guangdong, Hainan, Sanya]; alt. 10 m; 5 Apr. 1960; 采集者: 李学忠 [Li Xuezhong leg.]; IZCAS. – **Jiangxi** • 1 ♂; 江西南昌 [Jiangxi, Nanchang]; Jul. 1963; 马恩沛采 [Ma Enpei leg.]; SYSU.

### Distribution

Distributed in the Oriental and Australian Regions, known from Fujian, Guangdong, Guangxi, Hong Kong, Taiwan in China. New for Hainan and Jiangxi.

### *Dineutus mellyi* (Régimbart, 1882)

*Dineutes mellyi* Régimbart, 1882: 399.

*Dineutes sauteri* Uyttenboogaart, 1915: 140.

### Material examined

CHINA – **Henan** • 1 ♀; 河南信阳鸡公山 [Henan, Xinyang, Jigongshan Mt.]; Aug. 1936; SYSU.

### Distribution

Known from China (Fujian, Guangdong, Guangxi, Guizhou, Hong Kong, Hubei, Hunan, Jiangxi, Shandong, Sichuan, Taiwan, Xizang, Yunnan, Zhejiang), Japan and Vietnam. New for Henan.

### *Dineutus orientalis* (Modeer, 1776)

*Gyrinus orientalis* Modeer, 1776: 160.

*Dineutes marginatus* Sharp, 1873: 56.

*Dineutes quadrispina* Fairmaire, 1878: 88.

### Material examined

CHINA – **Beijing** • 1 ex.; 北京白石桥 [Beijing, Baishiqiao]; 5 Apr. 1955; 张毅然采 [Zhang Yiran leg.]; IZCAS. – **Hainan** • 11 ex.; Hainan Is. S China, Ka-chek, K'ien-g-tong District; 4 May 1932; F.K. To leg.; SYSU • 1 ♂; 海南 [Hainan]; 16 Jul. 1957; 利翠英采 [Li Cuiying leg.]; SYSU • 1 ex.; Hainan, Fanyang;



15 Apr. 1936; G. Ros leg.; IZCAS. – **Shaanxi** • 4 ex.; 陕西西安浐灞 [Shaanxi, Xi'an, Chanba]; 21 May 2010; 许升金采 [Xu Shengjin leg.]; SYSU. – **Tianjin** • 2 ex.; 天津八里台 [Tianjin, Balitai]; 1 May 1955; 刘英采 [Liu Ying leg.]; SYSU.

### Distribution

Distributed in China (Fujian, Guangdong, Guangxi, Guizhou, Hebei, Hong Kong, Hubei, Jiangsu, Liaoning, Shandong, Shanghai, Sichuan, Taiwan, Xizang, Yunnan, Zhejiang), Japan, Korea, Vietnam and Laos. New for Beijing, Hainan, Shaanxi and Tianjin.

Genus *Porrorynchus* Laporte, 1835

### *Porrorynchus landaisi* Régimbart, 1892

*Porrorynchus landaisi* Régimbart, 1892: 667.

*Porrorynchus barthelemyi* Régimbart, 1902: 5.

*Dineutus (Porrorynchus) landaisi latilimbus* Ochs, 1926: 193.

### Material examined

CHINA – **Guangxi** • 5 ♂♂, 3 ♀♀; 广西百寿 [Guangxi, Baishou]; 27 Jul. 1952; IZCAS.

### Distribution

Known from southern China (Guizhou, Hainan, Yunnan and Xizang) and northern Vietnam. New for Guangxi.

Tribe Gyrinini Latreille, 1810

Genus *Gyrinus* Geoffroy, 1762

### *Gyrinus convexiusculus* Macleay, 1871

*Gyrinus convexiusculus* Macleay, 1871: 128.

*Gyrinus huttoni* Pascoe, 1877: 141.

*Gyrinus simoni* Régimbart, 1883: 163.

### Material examined

CHINA – **Yunnan** • 5 ex. 云南西双版纳勐阿 [Yunnan, Xishuangbanna, Meng'e]; 1050–1080 m; 1958.VIII.22; 采集人: 王书永 [leg. Wang Shuyong]; IZCAS • 5 ex.; 云南西双版纳勐遮 [Yunnan, Xishuangbanna, Mengzhe]; alt. 1200 m; 8 Apr. 1958; 采集人: 王书永 [Wang Shuyong leg.]; IZCAS • 1 ♀; 云南屏边 [Yunnan, Pingbian]; alt 1300 m; 19–26 Jun. 1956; 黄克仁采 [Huang Keren leg.]; IZCAS • 8 ex.; 云南思茅附近 [Yunnan, near Simao]; 26 Mar. 1957; A. 孟恰茨基采 [Менчацкий leg.]; IZCAS.

### Distribution

Widely distributed in the Oriental and Australian Regions, known from Jiangxi, Taiwan and Xizang. New for Yunnan.

### *Gyrinus curtus* Motschulsky, 1866

*Gyrinus curtus* Motschulsky, 1866: 165.

*Gyrinus fulvescens* Takizawa, 1931: 17.

### Material examined

CHINA – **Heilongjiang** • 1 ♂; 黑龙江密山 [Heilongjiang, Mishan], 1 Oct. 1951; SYSU • 2 ♂♂, 2 ♀♀; Heilongjiang Prov., Yichun, Wuying, Wuying National Forest Park; 11 Jul. 2004; Li-Zhen Li leg.; SHNU.

### Distribution

Narrowly distributed in China (Beijing and Liaoning) and Japan. New for Heilongjiang.

### *Gyrinus mauricei* Fery & Hájek, 2016

*Gyrinus mauricei* Fery & Hájek, 2016: 651.

*Gyrinus orientalis* Régimbart, 1883: 167.

### Material examined.

CHINA – **Guangxi** • 11 ex.; 广西临桂黄沙 [Guangxi, Lingui, Huangsha]; 13 Aug. 2006; 黄国华采 [Huang Guohua leg.]; SYSU • 1 ♂; 广西容县 [Guangxi, Rongxian]; 10 Oct. 1962; 古德祥采 [Gu Dexiang leg.]; SYSU • 6 ex.; Guangxi Prov., Jiuwangdashan, Yangmeiao; 25°11'42" N, 108°38'51" E; alt. 1183 m; 20 Jul. 2015; Rencao Lin and Yudan Tang leg.; SYSU. – **Hubei** • 1 ♂; 湖北英山吴家山 [Hubei, Yingshan County, Wujiashan Mout.]; alt. 800–1000 m; 12 Jul. 2006; 采集人: 石磊 [Shi Lei leg.]; SYSU. – **Hunan** • 1 ♀; 湖南古丈县高望界自然保护区 [Hunan, Guzhang County, Gaowangjie National Reserve]; 28°39.898' N, 110°3.575' E; 1053 m; 21 Jun. 2017; F.-L. Jia leg.; SYSU. – **Zhejiang** • 3 ♀♀, 2 ♂♂; Zhejiang prov., West Tianmushan Mout.; 22 Aug. 2001; L-Z Li leg.; SYSU • 13 ♀♀, 6 ♂♂; Zhejiang Prov., Lin'an City, West Tianmushan MT.; alt. 300–400 m; 6 Jun. 2007; Tang Liang leg.; SHNU.

### Distribution

Known from China (Fujian, Guangdong, Guizhou, Hong Kong, Jiangsu, Jiangxi, Shanghai, Sichuan, Yunnan), Russia (Far East) and Vietnam. New for Guangxi, Hubei, Hunan and Zhejiang.

### *Gyrinus minutus* Fabricius, 1798

*Gyrinus minutus* Fabricius, 1798: 65.

*Gyrinus kirbii* Marsham, 1802: 100.

*Gyrinus ohbayashii* Satô, 1985: 51.

### Material examined

CHINA – **Guangdong** • 1 ♂, 3 ♀♀; 广东珠海横琴岛 [Guangdong, Zhuhai, Hengqin Island]; 12 Jul. 2005; 贾粤采 [Jia Yue leg.]; SYSU. – **Inner Mongolia** • 4 ♀♀; China, Nei Mongol, Hulunbeier, Huihe; 25 Jul. 2013; Shi Li, Jin Chunyun and De chaoqun leg.; SYSU • 2 ♂♂, 5 ♀♀; 中国内蒙古呼伦贝尔中蒙边境国门处 [China, Inner Mongolia, Hulunbeier, near the border of China and Mongolia]; 29 Aug. 2014; 贾凤龙采 [Fenglong Jia leg.]; SYSU • 1 ♀; Inner Mongolia, Hanma Management Centre, a stream by monitoring station; 30 Jul. 2014; Shi Li, Zhu Lixuan, Gao Xuefeng and Chen chao leg.; SYSU • 1 ♀; 内蒙古海拉尔市 [Inner Mongolia, Hailaer City]; 23–26 Jul. 2003; 采集人: 贾凤龙 [Jia Fenglong leg.]; SYSU.

### Distribution

Widely distributed in the Palaearctic Region. Known from Heilongjiang, Jilin, Liaoning, Xinjiang in China. New for Guangdong and Inner Mongolia.

### Remarks

As it is a typical northern species, the occurrence of this species from Guangdong, such a southern province is quite questionable. However, the material we examined did not differ from material from the northern provinces of China. Although it is possible that the four specimens from Guangdong were wrongly labelled, we have treated the material from Guangdong as *G. minutus* here.

### *Gyrinus paykulli* Ochs, 1927

*Gyrinus paykulli* Ochs, 1927: 39.

### Material examined

CHINA – **Xinjiang** • 2 ♂♂; 新疆博湖 [Xinjiang, Bohu]; 7 Aug. 2006; 赵玲采 [Zhao Ling leg.]; SYSU • 1 ♂; 新疆塔城哈尔墩河坝 [Xinjiang, Tacheng, Haerdun Heba]; 4 Aug. 2006; 赵玲采 [Zhao Ling leg.]; SYSU • 25 ♂♂, 7 ♀♀; 新疆额敏河 [Xinjiang, Eminhe County]; 25 Jul. 1955; 马世骏, 夏凯龄, 陈永林采 [Ma shijun, Xia kailin, Chen Yonglin leg.]; IZCAS • 1 ♀; 新疆富蕴苏普特 [Xinjiang, Fuyun County, Supute]; 47.07° N, 89.46° E; alt. 1065 m; 10 Jul. 2009; 采集人: 王志良 [Wang zhiliang leg.]; IZCAS.

### Distribution

Widely distributed in the Palearctic Region, known from Inner Mongolia and Xizang in China. New for Xinjiang.

### *Gyrinus pullatus* Zaitzev, 1907

*Gyrinus (Gyrinus) pullatus* Zaitzev, 1908: 244.

### Material examined

CHINA – **Beijing** • 2 ex.; 北京钓鱼台 [Beijing, Diaoyutai]; 8 May 1956; 张毅然采 [Zhang Yiran leg.]; IZCAS • 5 ex.; 北京碧云寺 [Beijing, Biyun Temple]; 24 Aug. 1956; 张毅然采 [Zhang Yiran leg.]; IZCAS • 1 ♂; 北京动物园 [Beijing Zoo]; 10 May 1955; 张毅然采 [Zhang Yiran leg.]; IZCAS • 1 ex.; 北京圆明园 [Beijing, Yuanmingyuan]; 17 May 1955; 张毅然采 [Zhang, Yiran leg.]; IZCAS.

### Distribution

Known from China (Jilin, Liaoning), Belarus (Ryndevich *et al.* 2014), Finland, Korea, Russia and Sweden (Holmen 1987). New for Beijing.

### *Gyrinus szechuanensis* Ochs, 1929

*Gyrinus natator szechuanensis* Ochs, 1929: 2.

*Gyrinus szechuanensis* – Ochs 1932: 58.

### Material examined

CHINA – **Yunnan** • 1 ♂; 云南维西塔城吧珠村 [Yunnan, Weixi, Tacheng, Baxi Village]; 19 Aug. 2013; 陈红星采 [Chen Hongxing leg.].

### Distribution

Endemic to China (Sichuan). New for Yunnan.

Genus *Metagyrinus* Brinck, 1955

*Metagyrinus sinensis* (Ochs, 1924)

*Paragyrinus sinensis* Ochs, 1924: 231 (original description).

*Metagyrinus sinensis* – Mazzoldi 1995: 165 (catalogue).

#### Material examined

CHINA – **Guangxi** • 2 ♀♀; 广西兴安县猫儿山 [Guangxi, Xing'an County, Maoershan Mout.]; 29 May 2010; 赵爽采 [Zhao Shuang leg.]; SYSU. – **Guizhou** • 1 ♂; 贵州, 江口梵净山 [Guizhou, Jiangkou County, Fanjingshan Mout.]; alt. 530 m; 15 Jul. 1988; 王书永采 [Wang Shuyong leg.]; IZCAS.

#### Distribution

Endemic to China (Fujian, Guangdong). New for Guangxi and Guizhou.

*Metagyrinus vitalisi* (Peschet, 1923)

Fig. 7

*Aulonogyrus vitalisi* Peschet, 1923: 123.

#### Material examined

CHINA – **Yunnan** • 1 ♀; 云南景东 [Yunnan, Jingdong]; alt. 1200 m; A. 孟恰茨基采 [A. Менчацкий leg.]; IZCAS.

#### Distribution

Known from Laos. New for China.

Orectochilini Régimbart, 1882

Genus *Orectochilus* Dejean, 1833

*Orectochilus argenteolimbatus* Peschet, 1923

Fig. 8

*Orectochilus argenteolimbatus* Peschet, 1923: 135.

#### Material examined

CHINA – **Yunnan** • 2 ♂♂; Yunnan Prov., Baoshan City, Baihuangling, Jiujiezi; 25°18' N, 98°47' E; alt. 2016 m; 19 Jun. 2015; Renchao Lin and Yudan Tang leg.; SYSU • 1 ♀; 云南楚雄西面山上 [Yunnan, Chuxiong, Ximianshan Mt.]; alt. 2500 m; 19 May 1956; 克雷让诺夫斯基采 [Klejanovsky leg.]; IZCAS • 1 ♀; 云南楚雄-弥渡 [Yunnan, Chuxiong-Midu]; 19 May 1956; B. 波波夫采 [B. Попов leg.]; IZCAS • 18 ex.; 云南西双版纳勐宋 [Yunnan, Xishuangbanna, Mengsong]; alt. 1600 m; 26 Apr. 1958; 王书永采 [Wang Shuyong leg.]; IZCAS • 42 ex.; 云南西双版纳勐混 [Yunnan, Xishuangbanna, Menghun]; alt. 1200–1400 m; 24 May 1958; 洪淳培采 [Hong Chunpei leg.]; IZCAS.

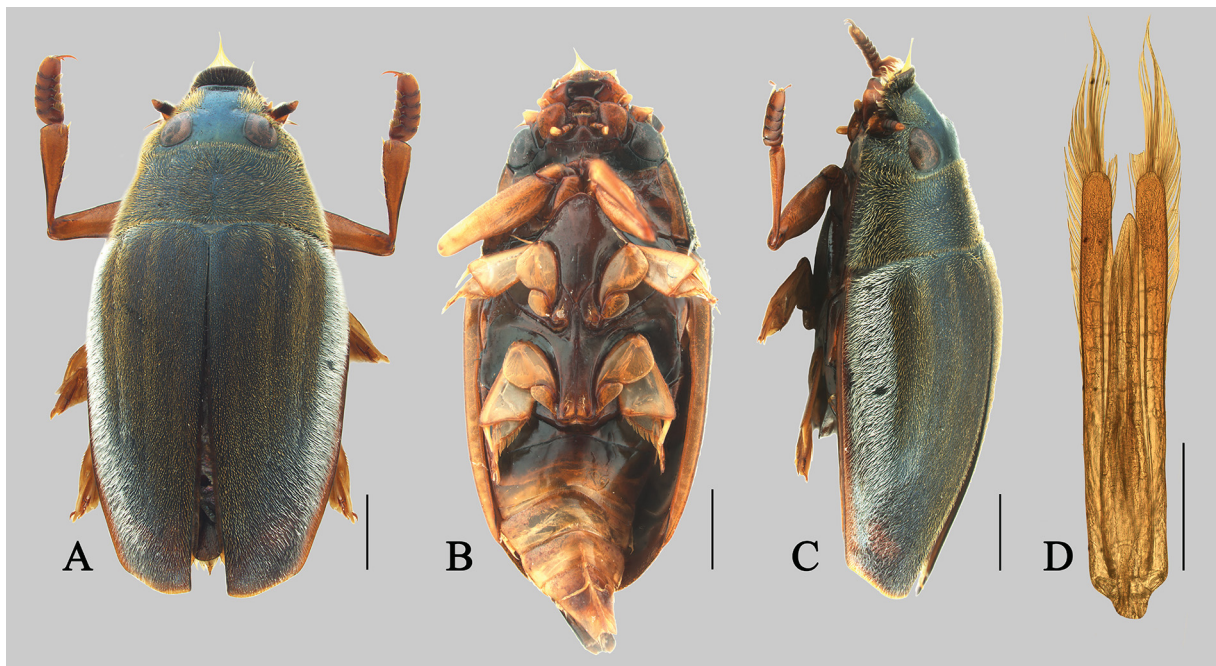
#### Distribution

Known from Vietnam. New for China.





**Fig. 7.** *Metagyrinus vitalisi* (Peschet, 1923), ♀ (IZCAS). **A.** Habitus, dorsal view. **B.** Habitus, ventral view. **C.** Inner rows of elytral striae. Scale bars: A–B = 1 mm; C = 0.5 mm.



**Fig. 8.** *Orectochilus argenteolimbatus* Peschet, 1923, ♂ (SYSU). **A.** Habitus, dorsal view. **B.** Habitus, ventral view. **C.** Habitus, lateral view. **D.** Male genitalia. Scale bars: A–C = 1 mm; D = 0.5 mm.



*Orectochilus fusiformis* Régimbart, 1892

*Orectochilus fusiformis* Régimbart, 1892: 706.

**Material examined**

CHINA – **Jiangsu** • 3 ♂♂, 5 ♀♀; 江苏南京 [Jiangsu, Nanjing]; Jul. 2009; SYSU.

**Distribution**

Endemic to China (Fujian, Guangdong, Shanghai, Zhejiang). New for Jiangsu.

*Orectochilus murinus* Régimbart, 1892  
(Figs 9A–10)

*Orectochilus murinus* Régimbart, 1892: 709.

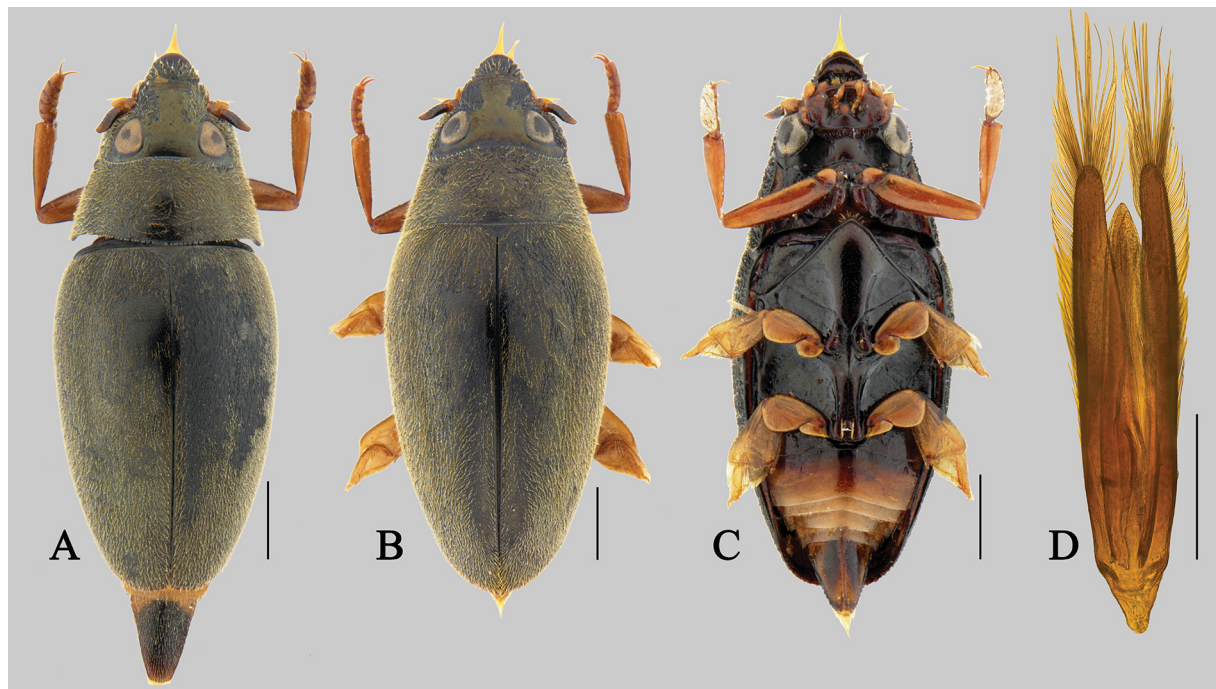
**Material examined**

**Type material**

INDIA – **Sikkim** • 1 ♂, 1 ♀; mounted together. “Sikkim Kunleong, 1904–215” [register says: ‘received in exchange from Régimbart’], “*Orectochilus murinus* Rég. ♂ ♀”, “CO-TYPE”, “NHMUK014433292”; BMNH.

**Additional material**

CHINA – **Yunnan** • 2 ♀♀ 云南省宁蒗彝族自治县高峰村 [Yunnan Prov., Ninglang Yi-Nationality Autonomous County, Gaofeng Village]; alt. 2249 m; 27°13'32" N, 100°52'13" E; 24 May 2019; 梁祖



**Fig. 9.** *Orectochilus murinus* Régimbart, 1892 (SYSU). **A.** ♂, habitus, dorsal view. **B.** ♀, habitus, dorsal view. **C.** ♂, habitus, ventral view. **D.** ♂, genitalia. Scale bars: A–C = 1 mm; D = 0.5 mm.

龙, 杨圳铭采 [Liang Zulong and Yang Zhenming leg.]; SYSU • 6 ♂♂, 9 ♀♀; Yunnan Prov., Nabanhe N. R. Nabancun; alt. 720 m; 6 May 2009; Jia-Yao Hu and Zi-wei Yin leg.; SHNU.

SIKKIM • 1 ♀; “Environs de Kurseong, R.P. Bretaudeau, Fry Coll, 1905–100 70770”, “*Orectochilus murinus* Rég”, “NHMUK014433293”; BMNH; • 1 ex.; “Environs de Kurseong, R.P. Bretaudeau, 99.105”, “*O. murinus* R named by Regimbart”, “Received with this name from Heyne C.O.W. [C.O. Waterhouse], “NHMUK014433294”; BMNH • 1 ex.; “India Or., Sikkim, Fry Coll. 1905.100”, “*Orectochilus murinus* Rég. Sikkim nec. Africa” [from Sikkim not Africa], “NHMUK014433295”; BMNH.

### Distribution

Known from Indochina, Sikkim and India. New for China.



**Fig. 10.** *Orectochilus murinus* Régimbart, 1892 (BMNH). A–C. Co-type. D–E. Additional material. A. ♂, habitus, dorsal view. B. ♀, habitus, dorsal view. C. Label. D. ♀, habitus, ventral view. E. Label. Scale bar = 1 mm.

*Orectochilus nigroaeneus* Régimbart, 1907

*Orectochilus nigroaeneus* Régimbart, 1907: 215.

**Material examined**

CHINA – **Hainan** • 9 ex.; 海南尖峰岭三分区 [Hainan, Jianfengling Mt., third division]; 7 Jul. 1981; 何国锋采 [He Guofeng leg.]; SYSU • 1 ♂; 海南尖峰岭 [Hainan, Jianfengling Mt.]; 9 Jul. 1981; 饶漱静采 [Rao Shujing leg.]; SYSU • 5 ex.; 海南尖峰岭三分区 [Hainan, Jianfengling Mt., third division]; 7 Jul. 1981; 李宗冉采 [Li Zongran leg.]; SYSU • 9 ex.; 海南尖峰岭三分区 [Hainan, Jianfengling Mt., third division]; 31 Jul. 1983; 陈焕强采 [Chen Huanqiang leg.]; SYSU • 7 ex.; 海南尖峰岭五分区 [Hainan, Jianfengling Mt., fifth division]; 8 Jul. 1981; 雷群邦采 [Lei Qunbang leg.]; SYSU • 3 ex.; 海南尖峰岭五分区 [Hainan, Jianfengling Mt., fifth division]; 8 Jun. 1981; 雷群邦采 [Lei Qunbang leg.]; SYSU • 1 ex.; 海南尖峰岭五分区 [Hainan, Jianfengling Mt., fifth division]; 22 Feb. 1982; 黄治河采 [Huang Zhihe leg.]; SYSU • 5 ex.; 海南尖峰岭天池 [Hainan, Jianfengling Mt., Tianchi]; 21 Feb. 1982; 黄治河采 [Huang Zhihe leg.]; SYSU • 1 ex.; 海南尖峰岭天池 [Hainan, Jianfengling Mt., Tianchi]; 8 Nov. 1983; 黄治河采 [Huang Zhihe leg.]; SYSU • 4 ex.; 海南尖峰岭五分区 [Hainan, Jianfengling Mt., fifth division]; 8 Jul. 1981; 张军雄采 [Zhang Junxiong leg.]; SYSU • 1 ex.; 海南尖峰岭天池 [Hainan, Jianfengling Mt., Tianchi]; 7 Jul. 1981; 李胜文采 [Li Shengwen leg.]; SYSU • 3 ex.; 海南尖峰岭五分区 [Hainan, Jianfengling Mt., fifth division]; 22 Feb. 1982; 龙建国采 [Ling Jianguo leg.]; SYSU • 2 ex.; 海南尖峰岭五分区 [Hainan, Jianfengling Mt., fifth division]; 10 Feb. 1984; 陆高平采 [Lu Gaoping leg.]; SYSU • 3 ex.; 海南尖峰岭五分区 [Hainan, Jianfengling Mt., fifth division]; 26 Feb. 1982; 张昆智采 [Zhang Kunzhi leg.]; SYSU • 1 ex.; 海南尖峰岭五分区 [Hainan, Jianfengling Mt., fifth division]; Aug. 1981; 华立中采 [Hua Lizhong leg.]; SYSU • 1 ex.; 海南尖峰岭五分区 [Hainan, Jianfengling Mt., fifth division]; 22 Feb. 1982; 龙永成采 [Long Yongcheng leg.]; SYSU • 1 ex.; 海南尖峰岭五分区 [Hainan, Jianfengling Mt., fifth division]; 8 Aug. 1981; 邝永泉采 [Kuang Yongquan leg.]; SYSU • 1 ex.; 海南尖峰岭五分区 [Hainan, Jianfengling Mt., fifth division]; 8 Aug. 1981; SYSU • 1 ex.; 海南尖峰岭三分区 [Hainan, Jianfengling Mt., third division]; 13 Oct. 1983; 保护站采 [Reserve station leg.]; SYSU • 1 ex.; 海南尖峰岭天池 [Hainan, Jianfengling Mt., Tianchi]; 21 Feb. 1982; 陈振耀采 [Chen Zhenyao leg.]; SYSU • 1 ex.; 海南尖峰岭天池 [Hainan, Jianfengling Mt., Tianchi]; 24 Feb. 1982; 陈振耀采 [Chen Zhenyao leg.]; SYSU • 22 ex.; 海南尖峰岭, 第三, 五分区 [Hainan, Jianfengling Mt., third and fifth division]; 9 May 2011; 赵爽采 [Zhao Shuang leg.]; SYSU. – **Henan** • 1 ♀; 河南信阳鸡公山 [Henan, Xinyang City, Jigongshan Mt.]; Aug. 1936; SYSU. – **Hubei** • 3 ♂♂, 1 ♀; 湖北英山吴家山 [Hubei, Yingshan County, Wujiashan Mt.]; 12 Jul. 2006; 石磊采 [Shi Lei leg.]; SYSU. – **Jiangxi** • 26 ex.; 江西龙南九连山 [Jiangxi, Longnan County, Jiulianshan Mout.]; 12–13 Aug. 2008; 贾凤龙采 [Jia Fenglong leg.]; SYSU • 1 ♂, 1 ♀; Jiangxi Prov. Longnan County, Jiulianshan Nature Reserve; 24°34'54" N, 114°26'21" E; alt. 425 m; 23–24 Apr. 2017; Wang Shishuang leg.; SYSU. – **Shaanxi** • 1 ♂; 陕西西安楼观台 [Shaanxi, Xi'an City, Louguantai]; 24 Jul. 2001; 赵玲采 [Zhao Lin leg.]; SYSU.

**Distribution**

Endemic to China (Fujian, Guangdong). New for Hainan, Henan, Hubei, Jiangxi and Shaanxi.

*Orectochilus obscuriceps* Régimbart, 1907

*Orectochilus obscuriceps* Régimbart, 1907: 215.

**Material examined**

CHINA – Guangdong • 21 ex.; 广东韶关南岭国家自然保护区, 溪流 [Guangdong, Shaoguan, Nanling National Natural Reserve, in the stream]; 24°56'18" N, 113°0'13" E; alt. 1210 m; 21 Jul. 2020; leg. Liang Zulong, Yang Zhenming; SYSU. – **Guangxi** • 5 ♂♂, 9 ♀♀; Guangxi Prov., Jiuwandashan, Yangmeiao; 25°11'42" N, 108°38'51" E; 20 Jul. 2015; Renchao Lin and Yudan Tang leg.; SYSU.



### Distribution

Endemic to China (Shaanxi, Sichuan). New for Guangdong and Guangxi.

### *Orectochilus obtusipennis* Régimbart, 1892

*Orectochilus obtusipennis* Régimbart, 1892: 712.

### Material examined

CHINA – **Chongqing** • 1 ♂; 重庆, 巫山县 [Chongqing, Wushan County]; alt. 200–1800 m; 16 Aug. 2006; 张小蓉采 [Zhang Xiaorong leg.]; SYSU. – **Guangdong** • 1 ♂; 广东连县大东山 [Guangdong, Lianxian County, Dadongshan Mout.]; 13 Jul. 1998; 蔡于琛采 [Cai Yuchen leg.]; SYSU • 1 ♂; 广东连县大东山 [Guangdong, Lianxian County, Dadongshan Mout.]; 13 Jul. 1998; 陈翠萍采 [Chen Cuiping leg.]; SYSU. – **Henan** • 2 ♀♀; 河南信阳鸡公山 [Henan, Xinyang City, Jigongshan Mount.]; Aug. 1926; SYSU. – **Hunan** • 1 ♀; Hunan Province, Yanling Co., Nanfengmian, mixed forest, shrub, flower sifted and beating; 26°16'32" N, 113°59'34" E; alt. ca 1380 m; 27 May 2014; Peng, Shen, Yu and Yan leg.; SYSU • 1 ♀; Hunan Province, Guidong Co., Bamian Shan; 26°17'59" N, 113°59'22" E; alt. 1030 m; 31 May 2014; Peng, Shen, Yu and Yan leg.; light trap; SYSU. – **Jiangxi** • 1 ♀; W Jiangxi, Ji'an City, Jinggang Shan, Jingzhu Shan; 26°29'45" N, 114°04'45" E; alt. 1130 m; 2 Aug. 2014; Chen, Hu, Lv and Yu leg.; in the stream; SHNU. – **Jiangsu** • 1 ♀; 江苏南京 [Jiangsu, Nanjing]; Jul. 2009; SYSU. – **Sichuan** • 1 ♂; 四川省青川县青溪镇河口里村 [Sichuan Prov., Qingchuan County, Qingxi Town, Hekouli]; alt. 1127 m; 32°31'31" N, 104°50'22" E; 11 May 2019; 梁祖龙, 杨圳铭采 [Liang Zulong and Yang Zhenming leg.]; SYSU.

### Distribution

Endemic to China. Known from Shanghai and Zhejiang. New for Chongqing, Guangdong, Henan, Hunan, Jiangxi, Jiangsu and Sichuan.

Genus *Patrus* Aubé, 1838

### *Patrus annandalei* (Ochs, 1925) comb. nov.

Fig. 11

*Orectochilus annandalei* Ochs, 1925: 203. (original description).

*Orectochilus (Patrus) annandalei* – Ochs 1930: 20.

### Material examined

CHINA – **Hainan** • 1 ♂; 海南尖峰岭天池 [Hainan, Jianfengling Mt., Tianchi]; 21 Mar. 1983; 梁少营采 [Liang Shaoying leg.]; SYSU • 7 ex.; 海南岛尖峰岭 [Hainan, Jianfengling]; 18 Aug. 1963; SYSU • 3 ex.; 海南尖峰岭 [Hainan, Jianfengling]; 4 Feb. 1981; 陈振耀 [Chen Zhenyao leg.]; SYSU • 2 ♂♂; 海南陵水吊罗山 [Hainan, Lingshui, Diaoluoshan Mt.]; 26 Dec. 1983; 李济才采 [Li Jicai leg.]; SYSU.

VIETNAM • 2 ♀♀; “Tonkin: Hoabinh. A. de Cooman. B. M. 1940–13”; IZCAS.

### Distribution

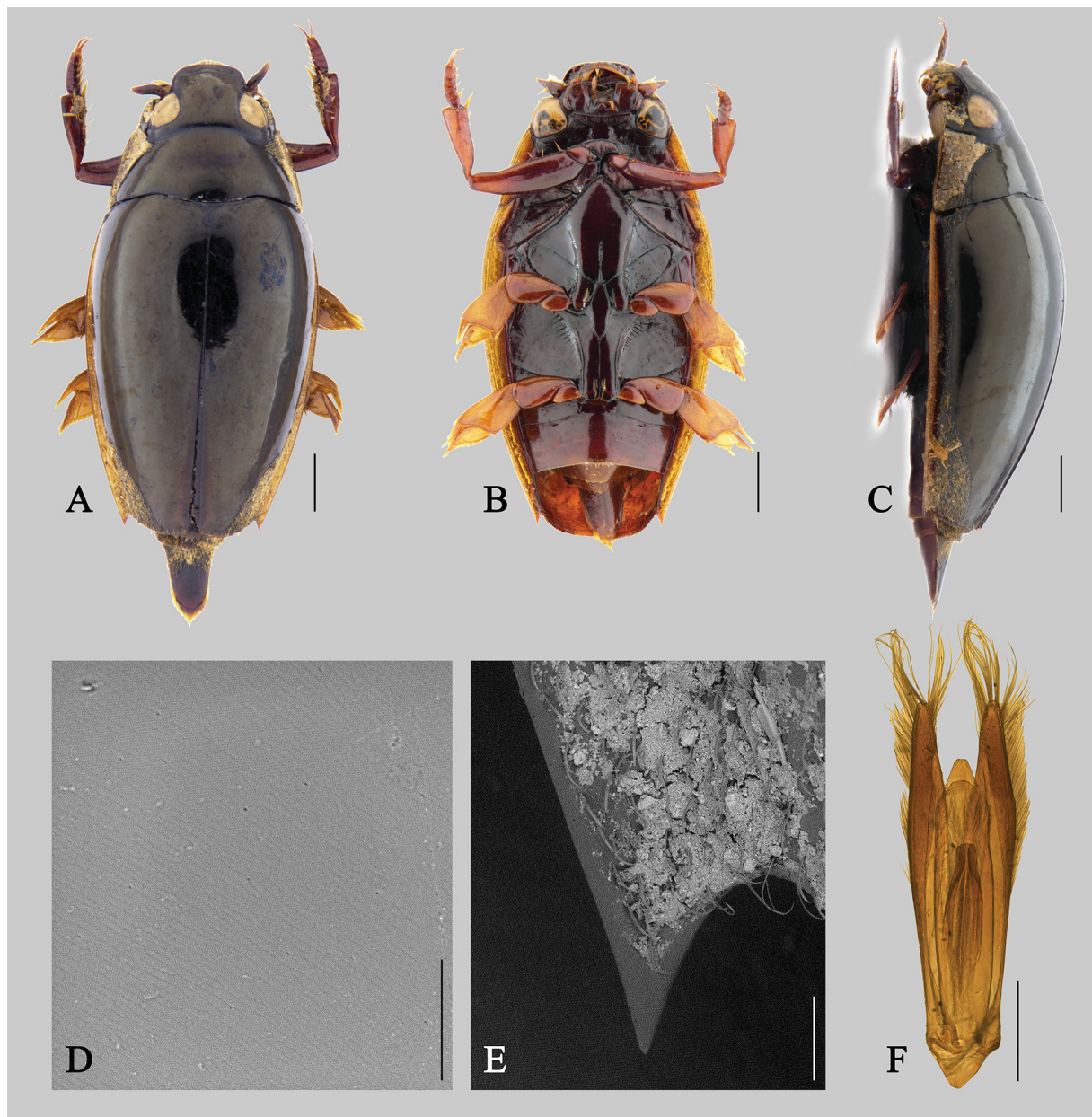
Known from India. New for China and Vietnam.

*Patrus chalceus* (Ochs, 1936)

*Orectochilus chalceus* Ochs, 1936: 605. (original description).

*Orectochilus (Patrus) chalceus* – Mazzoldi 1995: 164 (catalogue).

*Patrus chalceus* – Hájek & Fery 2017: 28 (catalogue).



**Fig. 11.** *Patrus annandalei* (Ochs, 1925) (SYSU). **A.** ♀, habitus, dorsal view. **B.** ♀, habitus, ventral view. **C.** ♀, habitus, lateral view. **D.** ♀, surface sculpture on elytra. **E.** ♀, epipleural angle. **F.** ♂, male genitalia. Scale bars: A–C = 1 mm; D = 30  $\mu$ m; E = 100  $\mu$ m; F = 0.5 mm.



### Material examined

CHINA – **Hainan** • 1 ♂; 海南尖峰岭五分区 [Hainan, Jianfengling Mt., fifth division]; 8 Jul. 1981; 饶漱靖采 [Rao shujing leg.]; SYSU • 1 ♀; 海南尖峰岭天池 [Hainan, Jianfengling Mt., Tianchi]; Jul. 1981; SYSU. – **Jiangxi** • 1 ♂, 1 ♀; 江西井冈山弯坑 [Jiangxi, Jinggangshan Mt.]; 29 Apr. 2011; 采集人: 赵爽 [Zhao Shuang leg.]; SYSU • 4 ♂♂, 1 ♀; 江西井冈山白银湖 [Jiangxi, Jinggangshan Mt.]; alt. 880 m; 23 Apr. 2011; 采集人: 赵爽 [Zhao Shuang leg.]; SYSU • 1 ♂; 江西井冈山白银湖 [Jiangxi, Jinggangshan Mt., Baiyinhu Lake]; alt. 800 m; 27 Apr. 2011; 采集人: 贾凤龙 [Jia Fenglong leg.]; SYSU • 2 ♀♀; 江西井冈山大井-龙潭风景区 [Jiangxi, Jinggangshan Mt., Dajing-Longtang Scenic Area]; 3 Oct. 2010; 赵爽采 [Zhao Shuang leg.]; SYSU.

### Distribution

Endemic to China (Guangdong). New for Hainan and Jiangxi.

*Patrus coomani* (Peschet, 1925) comb. nov.

Fig. 12

*Orectochilus coomani* Peschet, 1925: 253 (original description).

### Material examined

CHINA – **Guangdong** • 1 ♂, 2 ♀♀; 深圳市大鹏半岛坪头岭 [Shenzhen, Dapeng Peninsula, Pingtoulung Mt.]; 22°39'48" N, 114°25'11" E; alt. 259 m; 25 Jul. 2019; 梁祖龙, 杨圳铭, 姜卓寅, 郭光宇, 纪新元采 [Liang Zulong, Yang Zhenming, Jiang Zuoyin, Guo Guangyu and Ji Xinyuan leg.]; SYSU • 1 ♀; 广东省深圳市大鹏半岛田头山 [Shenzhen, Dapeng Peninsula, Tiantoushan Mt.]; 22°40'12" N, 114°24'44" E; alt. 208.4 m; 30 Jul. 2019; 杨圳铭, 姜卓寅, 郭光宇, 纪新元采 [Yang Zhenming, Jiang Zuoyin, Guo Guangyu, Ji Xinyuan leg.]; SYSU • 7 ♂♂, 5 ♀♀; 广东省台山市上川岛猕猴省级保护区 [Guangdong Prov., Taishan City, Shangchuan Island Macaque Provincial Nature Reserve]; 21°44'36" N, 112°50'33" E; alt. 10 m; 18 Jan. 2019; 贾凤龙, 梁祖龙采 [Jia Fenglong and Liang Zulong leg.]; SYSU • 2 ♂♂, 1 ♀; 广东省台山市上川岛猕猴省级保护区 [Guangdong Prov., Taishan City, Shangchuan Island Macaque Provincial Nature Reserve]; 21°44'51" N, 112°49'36" E; alt. 50 m; 17 Jan. 2019; 贾凤龙, 梁祖龙采 [Jia Fenglong and Liang Zulong leg.]; SYSU • 1 ♀; 广东省台山市上川岛猕猴省级保护区石背潭 [Guangdong Prov., Taishan City, Shangchuan Island Macaque Provincial Nature Reserve, Shibeitang]; 21°46'1" N, 112°49'2" E; alt. 20 m; 19 Jan. 2019; 贾凤龙, 梁祖龙采 [Jia Fenglong and Liang Zulong leg.]; SYSU • 1 ♂; 广东肇庆鼎湖山 [Guangdong, Zhaoqing, Dinghushan Mt.]; 19 Jun. 1958; 利翠英采 [Li Cuiying leg.]; SYSU • 1 ♂, 4 ♀♀; 广东肇庆鼎湖山 [Guangdong, Zhaoqing, Dinghushan Mt.]; 13 Oct. 1958; SYSU • 1 ♂, 3 ♀♀; 广东鼎湖山 [Guangdong, Dinghushan Mt.]; 8 Jul. 1964; 吴思添采 [Wu Sitian leg.]; SYSU • 1 ♀; 肇庆鼎湖山 [Zhaoqing, Dinghushan Mt.]; 3 Nov. 1974; 春强采 [Chun Qiang leg.]; SYSU • 1 ♀; 广东高要县鼎湖山 [Guangdong, Gaoyao County, Dinghushan Mt.]; 15 Jul. 1964; 何目秀采 [He Muxiu leg.]; SYSU • 1 ♀; 和平县九连山 [Heping County, Jiulianshan Mt.]; 26 Aug. 1986; 陈振耀采 [Chen Zhenyao leg.]; SYSU • 1 ♀; 广东连县大东山 [Guangdong, Lianxian County, Dadongshan Mt.]; 4 Sep. 1994; 彭红采 [Peng Hong leg.]; SYSU • 1 ♂, 2 ♀♀; 广东高明鹿田 [Guangdong Gaoming, Lutian]; 14 May 2004; 贾凤龙, 方小端采 [Jia Fenglong and Fang Xiaoduan leg.]; SYSU.

### Distribution

Known from Vietnam. New for China.

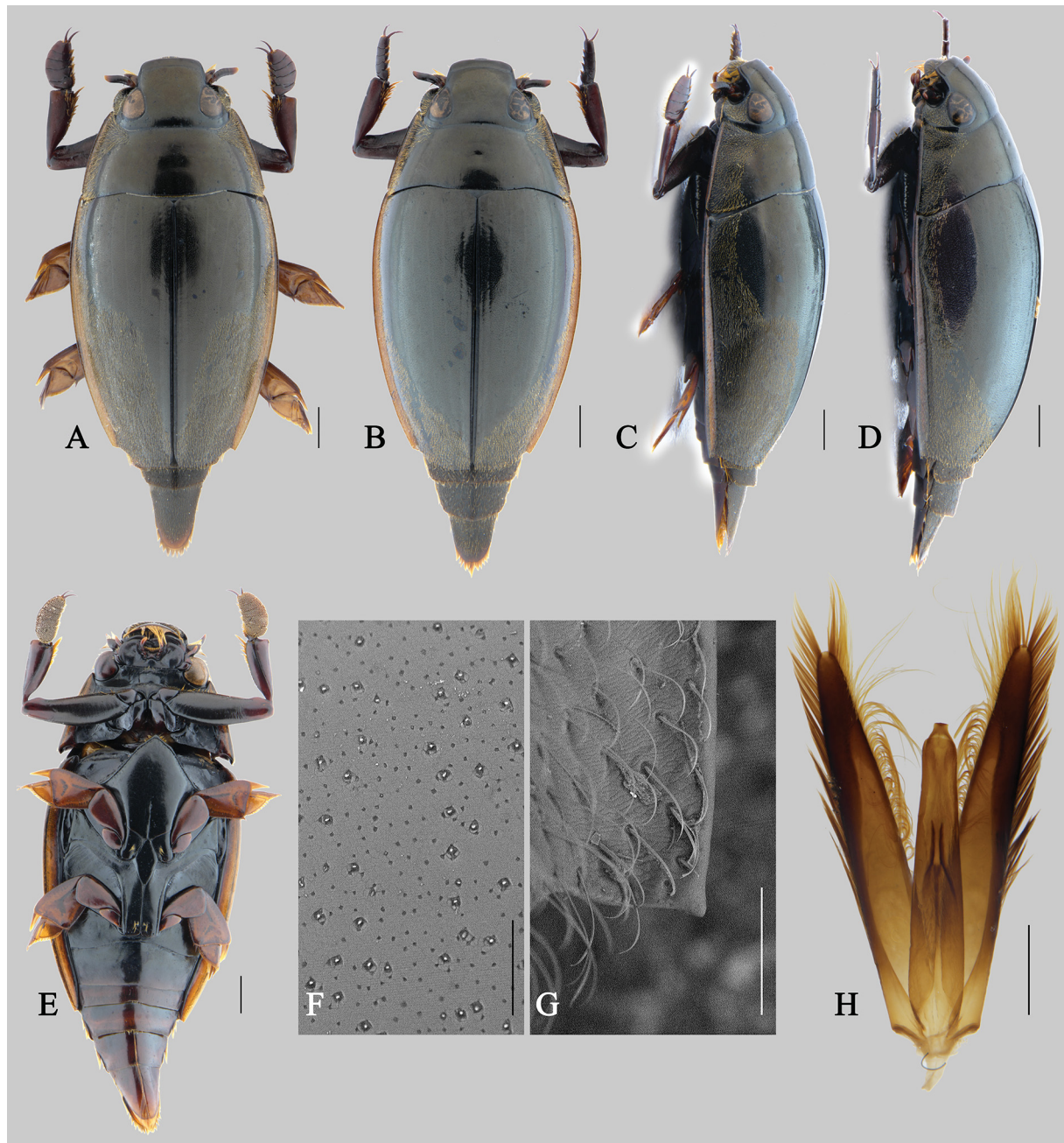
*Patrus haemorrhous* (Régimbart, 1892)

Figs 13–14

*Orectochilus haemorrhous* Régimbart, 1892: 706 (original description).

*Orectochilus haemorrhous* var. *lobiger* Régimbart, 1907: 214 (original description).

*Patrus haemorrhous* – Hájek & Fery 2017: 28 (catalogue).



**Fig. 12.** *Patrus coomani* (Peschet, 1925) (SYSU). **A.** ♂, habitus, dorsal view. **B.** ♀, habitus, dorsal view. **C.** ♂, habitus, lateral view. **D.** ♀, habitus, lateral view. **E.** ♂, habitus, ventral view. **F.** ♂, surface sculpture on elytra. **G.** ♂, epipleural angle. **H.** ♂, genitalia. Scale bars: A–E = 1 mm; F–G = 100 µm; H = 0.5 mm.

**Material examined**

**Syntype**

INDIA – **Tamil Nadu** • 1 ♂, 3 ♀♀; Madras; 1908; Maurice Régimbart leg.; MNHN EC11801 to EC11804.

CHINA – **Yunnan** • 1 ♀; Yunnan Prov., Xishuangbanna, Botanical garden; 5–6 Jul. 2003; Hu and Tang leg; SHNU.

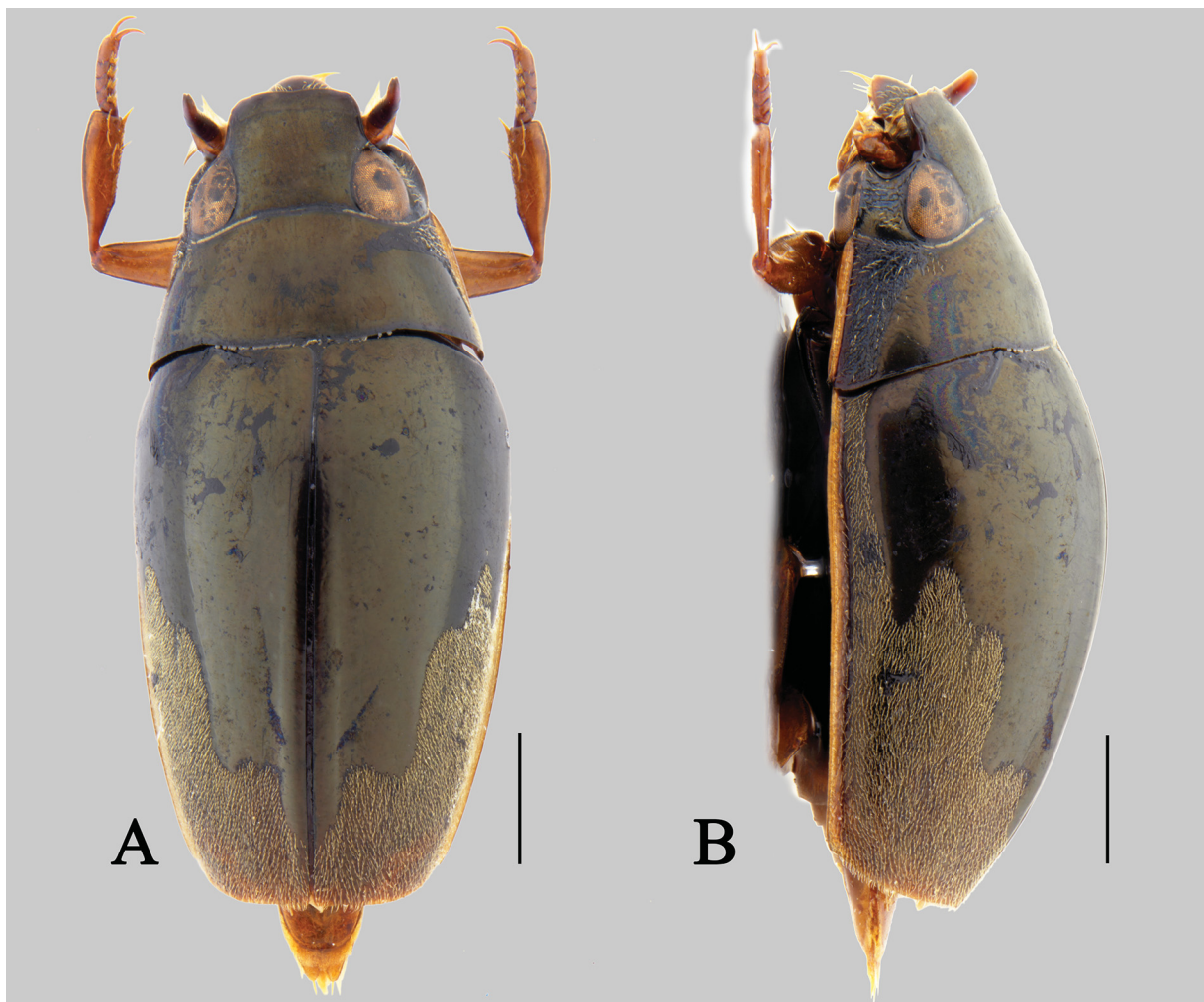
**Distribution**

Known from India and Pakistan. New for China.

*Patrus jilanzhui* (Mazzoldi, 1998)

*Orectochilus (Patrus) jilanzhui* Mazzoldi, 1998: 140, fig. 3a–d (original description).

*Patrus jilanzhui* – Hájek & Fery 2017: 29 (catalogue).



**Fig. 13.** *Patrus haemorrhous* (Régimbart, 1891), ♀, habitus (SHNU). **A.** Dorsal view. **B.** Lateral view. Scale bar = 1 mm.



### Material examined

CHINA – Guangdong • 1 ♂; 广东肇庆鼎湖山 [Guangdong, Zhaoqing, Dinghushan Mt.]; 19 Aug. 1958; 利翠英采 [leg. Li Cuiying.]; SYSU • 1 ♀; 广东连县大东山 [Guangdong, Lianxian County, Dadongshan Mt.]; 13 Aug. 1998; 谭乐采 [Tan Le leg.]; SYSU.

### Distribution

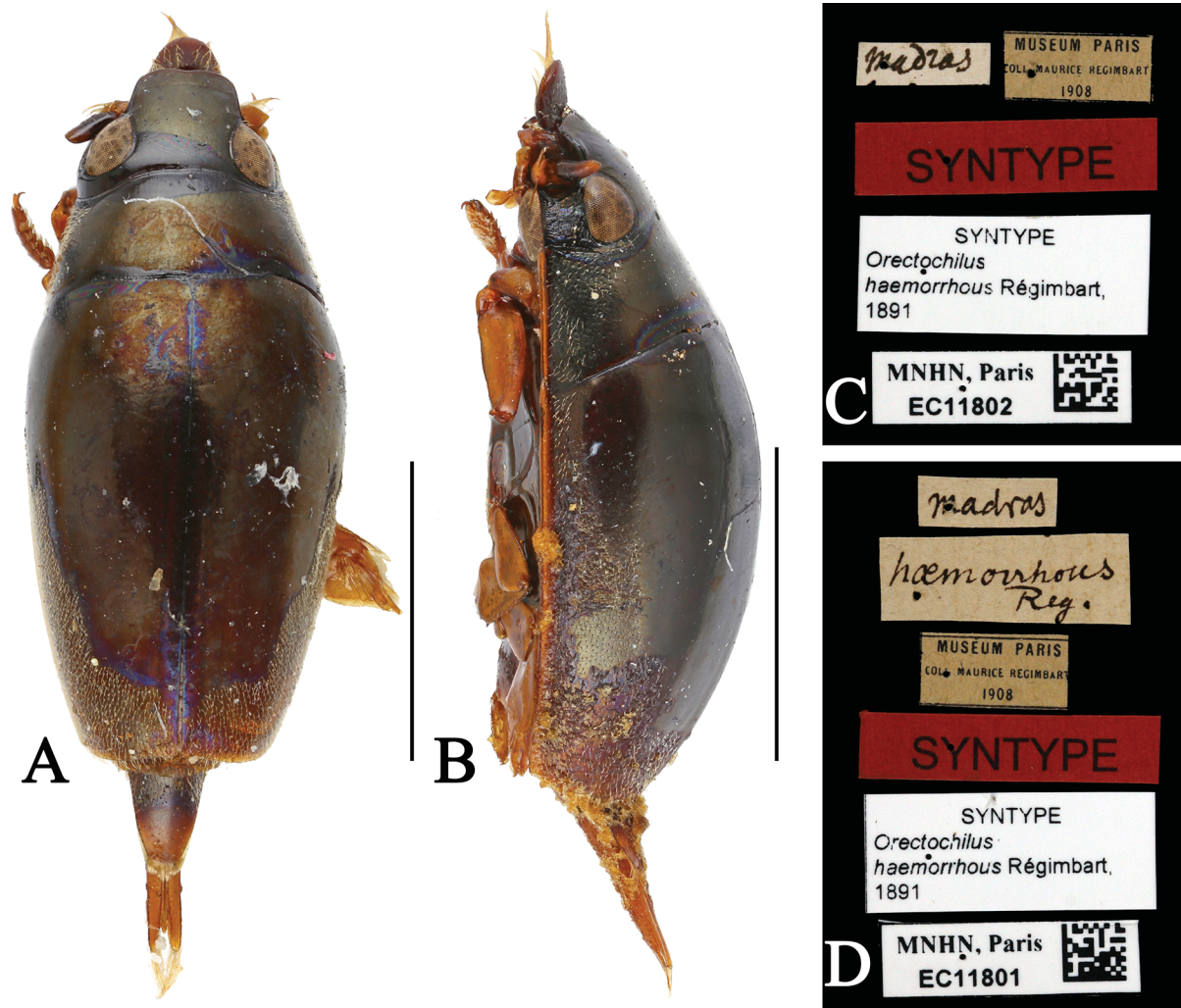
Endemic to China. Known from Hainan. New for Guangdong.

### *Patrus landaisi* (Régimbart, 1892)

*Orectochilus landaisi* Régimbart, 1892: 692 (original description).

*Orectochilus (Patrus) landaisi* – Mazzoldi 1995: 164 (catalogue).

*Patrus landaisi* – Hájek & Fery 2017: 29 (catalogue).



**Fig. 14.** *Patrus haemorrhous* (Régimbart, 1891), syntypes (MNHN). **A.** ♀, habitus, dorsal view. **B.** ♂, habitus, lateral view. **C.** Label of specimen A. **D.** Label of specimen B. Figures provided by Antoine Mantilleri. Scale bars = 2 mm.

#### Material examined

CHINA – **Guangxi** • 1 ♂, 4 ♀♀; 广西隆林 [Guangxi, Longlin]; 26 May 1977; 黄治河采 [Huang Zhihe leg.]; SYSU • 1 ♂, 1 ♀; 广西靖西底定 [Guangxi, Jingxi City, Diding Village]; 8 Aug. 2010; 黄建华采 [Huang Jianhua leg.]; SYSU.

#### Distribution

Known from China (Guizhou, Yunnan), Vietnam and Laos. New for Guangxi.

#### *Patrus marginepennis angustilimbus* (Ochs, 1925)

Fig. 15

*Orectochilus marginipennis angustilimbus* Ochs, 1925: 202 (original description).

*Patrus marginepennis angustilimbus* – Hájek & Fery 2017: 29 (catalogue).

#### Material examined

CHINA – **Yunnan** • 1 ♀; 云南小勐养 [Yunnan, Xiaomengyang]; alt. 810 m; 25 Mar. 1957; 蒲富基采 [Pu Fuji leg.]; IZCAS.

#### Distribution

Known from India. New for China.

#### *Patrus marginipennis parvilimbus* (Ochs, 1925)

*Orectochilus marginipennis parvilimbus* Ochs, 1925: 202 (original description).

*Orectochilus (Patrus) marginepennis parvilimbus* – Mazzoldi 1995: 164 (catalogue).

*Patrus marginepennis parvilimbus* – Hájek & Fery 2017: 29 (catalogue).

#### Material examined

CHINA – **Fujian** • 1 ♂; 福建, 建阳黄坑桂林 [Fujian, Jianyang, Huangkeng, Guilin]; alt. 270–390 m; 5 Apr. 1960; 马成林采 [Ma Chenlin leg.]; IZCAS. – **Hainan** • 1 ex.; 海南尖峰岭 [Hainan, Jianfengling Mt.]; 13 Oct. 1983; 利翠英采 [Li Cuiying leg.]; SYSU • 1 ex.; 海南尖峰岭 [Hainan, Jianfengling Mt.]; 19 Dec. 1983; 利翠英采 [Li Cuiying leg.]; SYSU.

#### Distribution

Endemic to south China. Known from Guangdong. New for Fujian and Hainan.

#### *Patrus melli* (Ochs, 1925)

*Orectochilus melli* Ochs, 1925: 197 (original description).

*Orectochilus (Patrus) melli* – Mazzoldi 1995: 165 (catalogue).

*Patrus melli* – Hájek & Fery 2017: 29 (catalogue)

#### Material examined

CHINA – **Guangxi** • 1 ♂, 3 ♀♀; Guangxi Prov., Jinxiu County; 24 Jul. 2011; alt. 850–950 m; PENG Zhong leg.; SHNU. – **Jiangxi** • 1 ♂, 1 ♀; 江西井冈山香洲 [Jiangxi, Jinggangshan Mt., Xiangzhou]; 13 Sep. 2011; 采集人: 杨立军、李锦伟、成牧春 [Yang Lijun, Li Jinwei and Cheng Muchun leg.];

SYSU. – Zhejiang • 1 ♂, 1 ♀; Zhejiang Prov., Longwang Shan; 4 Oct. 2003; Li-Zhen Li leg; SHNU  
• 1 ♀; Zhejiang Prov., Mt. Longwang; alt. 300–500 m; 24 Apr. 2004; Huang and Chi leg.; SHNU.

#### Distribution

Endemic to China (Fujian, Guangdong, Hong Kong). New for Guangxi, Jiangxi and Zhejiang.

*Patrus procerus* (Régimbart, 1884) comb. nov.

Fig. 16

*Orectochilus procerus* Régimbart, 1884: 415 (original description).

#### Material examined

CHINA – Guangxi • 1 ♂, 2 ♀♀; 广西防城板八乡 [Guangxi, Fangcheng, Banbaxiang]; 4 Jun. 2000; 李文柱采 [Li Wenzhu leg.]; SYSU.

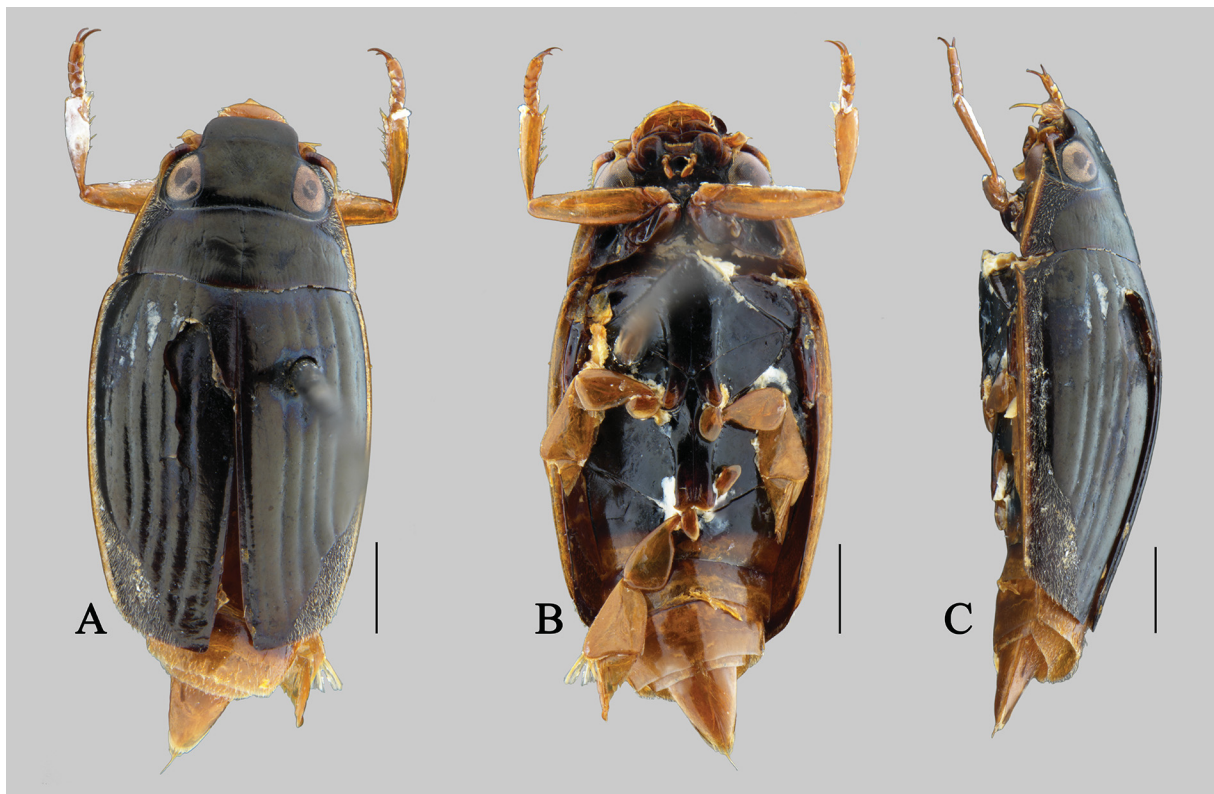
#### Distribution

Known from Cambodia. New for China.

*Patrus productus* (Régimbart, 1884)

*Orectochilus productus* Régimbart, 1884: 422, 1883: pl. 12 fig. 130 (original description).

*Orectochilus (Patrus) productus* – Mazzoldi 1995: 165 (catalogue).



**Fig. 15.** *Patrus marginepennis angustilimbus* (Ochs, 1925), ♀, habitus (IZCAS). A. Dorsal view. B. Ventral view. C. Lateral view. Scale bars = 1 mm.



*Patrus productus* – Hájek & Fery 2017: 29 (catalogue).

#### Material examined

CHINA – **Guangdong** • 10 ex. 广东珠海横琴岛 [Guangdong, Zhuhai, Hengqin Island]; 12 Jul. 2005; 采集人: 贾粤 [Jia Yue leg.]; SYSU • 2 ♂♂, 1 ♀; 广东省肇庆市丹霞山 [Guangdong, Zhaoqing, Dinghushan Mt.]; 11 Jun. 2018; 梁祖龙采 [Liang Zulong leg.]; SYSU • 24 ex.; 深圳坪山区马峦山 [Shenzhen, Pingshan District, Maluanshan Mt.]; 22°38'42" N, 114°19'38" E; alt. 311 m; 27 Jul. 2019; 杨圳铭, 姜卓寅, 郭光宇, 纪新元采 [Yang Zhenming, Jiang Zuoyin, Guo Guangyu and Ji Xinyuan leg.]; SYSU.

#### Distribution

Widespread in the Oriental Region, known from Hainan, Hong Kong, Jiangsu, Macao in China. New for Guangdong.

#### *Patrus severini* (Régimbart, 1892)

*Orectochilus severini* Régimbart, 1892: 700 (original description).

*Orectochilus (Patrus) severini* – Mazzoldi 1995:165 (catalogue).

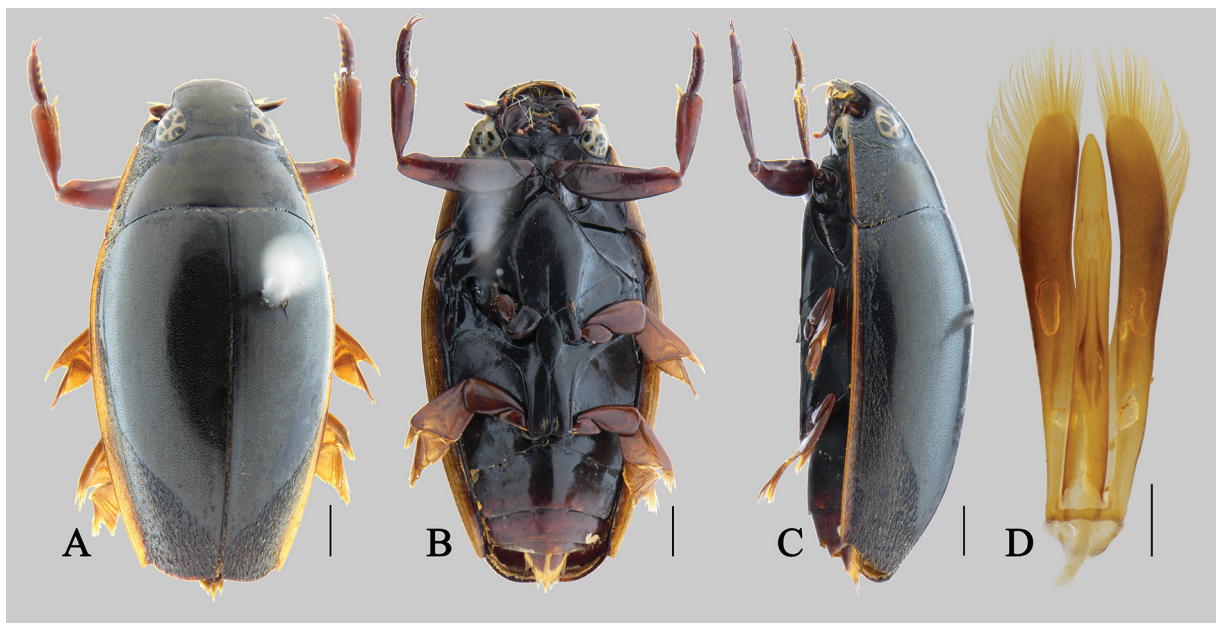
*Patrus severini* – Hájek & Fery 2017: 29 (catalogue).

#### Material examined

CHINA – **Jiangsu** • 1 ♀, 1 ♂; 江苏南京 [Jiangsu, Nanjing]; Jul. 2009; SYSU.

#### Distribution

Endemic to China. Known from ?Guangdong, Guizhou, and Hong Kong. New for Jiangsu.



**Fig. 16.** *Patrus procerus* (Régimbart, 1884) (SYSU). **A.** ♀, habitus, dorsal view. **B.** ♀, habitus, ventral view. **C.** ♀, habitus, lateral view. **D.** ♂, genitalia. Scale bars: A–C = 1 mm; D = 0.5 mm.

*Patrus wangi* (Mazzoldi, 1998)

*Orectochilus (Patrus) wangi* Mazzoldi, 1998: 145, figs 1, 4 (original description).

*Patrus wangi* – Hájek & Fery 2017: 29 (catalogue).

**Material examined**

CHINA – **Guangdong** • 1 ♀; 广东肇庆鼎湖山 [Guangdong, Zhaoqing, Dinghushan Mt.]; Jul. 1973; SYSU. – **Jiangxi** • 2 ♂♂, 2 ♀♀; 江西三清山 [Jiangxi, Sanqingshan Mt.]; 15 Aug. 2006; 贾凤龙采 [Jia Fenglong leg.]; SYSU.

**Distribution**

Endemic to China (Anhui, Zhejiang). New for Guangdong and Jiangxi.

*Patrus wui* (Ochs, 1932)

*Orectochilus wui* Ochs, 1932: 57 (original description).

*Orectochilus (Patrus) wui* – Mazzoldi 1995: 165 (catalogue).

*Patrus wui* – Hájek & Fery 2017: 29 (catalogue).

**Material examined**

CHINA – **Guangdong** • 15 ex.; 广东肇庆黑石顶 [Guangdong, Zhaoqing, Heishiding]; 25 Jul. 2018; 贾凤龙采 [Jia Fenglong leg.]; SYSU • 4 ex.; 广东封开县黑石顶 [Guangdong, Fengkai, Heishiding]; 23°31'N, 111°52'E; 20–22 Sep. 2014; 贾凤龙, 唐余丹采 [Jia Fenglong, Tang Yudan leg.]; SYSU • 7 ex.; 广东省封开县黑石顶 [Guangdong, Fengkai, Heishiding]; 23°31' N, 111°52' E; 20–22 Sep. 2014; 贾凤龙, 林仁超, 唐余丹采 [Jia Fenglong, Lin Renchao, Tang Yudan leg.]; SYSU • 2 ex.; 广东封开黑石顶 [Guangdong, Fengkai, Heishiding]; 11 Jul. 2000; 罗菁采 [Luo Jing leg.]; SYSU • 2 ♂♂; 广东封开黑石顶 [Guangdong, Fengkai, Heishiding]; 5 Jul. 1987; 钟声雄采 [Zhong Shengxiong leg.]; SYSU • 1 ♂; 广东封开黑石顶 [Guangdong, Fengkai, Heishiding]; 3 Jul. 1987; 陈邵峰采 [Chen Shaofeng leg.]; SYSU • 1 ♂, 2 ♀♀; 广东鼎湖山 [Guangdong, Dinghushan Mt.]; 22 Jul. 1964; 吴思添采 [Wu Sitian leg.]; SYSU • 1 ♂; 广州河南 [Guangzhou, Henan]; 15 Oct. 1992; 邝焜采 [Kuang Biao leg.]; SYSU • 1 ♀; 广东乳源南岭半山腰保护站 [Guangdong, Ruyuan, Nanling Hillside Reserve Station]; alt. 1000 m; 23 Aug. 2010; 赵爽采 [Zhao Shuang leg.]; SYSU • 1 ♀; 广东高明杨梅镇 [Guangdong, Gaoming, Yangmei Town]; May 2004; 采集人: 贾凤龙 [Jia Fenglong leg.]; SYSU • 2 ♂♂, 2 ♀♀; 广东高明杨梅镇 [Guangdong, Gaoming, Yangmei Town]; 23–26 Apr. 2006; 采集人: 贾凤龙 [Jia Fenglong leg.]; SYSU • 1 ♂, 1 ♀; 广东高明杨梅镇 [Guangdong, Gaoming, Yangmei Town]; 20–27 Apr. 2006; 袁采亚采 [Yuan Caiya leg.]; SYSU • 1 ♂; 广东高明杨梅镇 [Guangdong, Gaoming, Yangmei Town]; 20–27 Apr. 2006; 胡剑采 [Hu Jian leg.]; SYSU.

**Distribution**

Endemic to south China. Known from Fujian. New for Guangdong.

**Key to the species of *Patrus Aubé* occurring in China**

The following key is based on the species of which we have examined material from China. The following 13 species known from China were not included in the key because we were not able to examine any material of these species from China: *Patrus metallicus* (Régimbart, 1884), *P. sculpturatus* (Régimbart, 1884), *P. chinensis* (Régimbart, 1892), *P. sublineatus* (Régimbart, 1892), *P. sulcipennis* (Régimbart, 1892), *P. fallax* (Peschet, 1923), *P. mimicus* (Ochs, 1936), *P. minusculus* (Ochs, 1936),

*P. depressiusculus* (Ochs, 1940), *P. helferi* (Ochs, 1940), *P. distinguendus* (Ochs, 1942), *P. klapperichi* (Ochs, 1942) and *P. jaechi* (Mazzoldi, 1998).

1. Labrum semi-circular, about half as long as wide, with anterior margin rounded ..... 2
  - Labrum short and wide, less than  $\frac{1}{3}$  as long as wide, with anterior margin truncate or slightly convex ..... 6
2. Epipleural angle of elytra prolonged into a spine (Fig. 11E) ..... *P. annandalei* (Ochs, 1925)
  - Epipleural angle of elytra not prolonged into a spine ..... 3
3. Labrum bright yellow, evidently differs from colour of clypeus (Fig. 15A) ..... 4
  - Labrum brown or black, concolorous with clypeus ..... 5
4. Size larger, long 5.5–6.0 mm ..... *P. marginipennis angustilimbus* (Ochs, 1925)
  - Size smaller, long 4.0–4.5 mm ..... *P. marginipennis parvilimbus* (Ochs, 1925)
5. Posterior margin of elytral glabrous region irregular, trilobate in apical  $\frac{1}{2}$  at each elytron (Fig. 13A–B) ..... *P. haemorrhous* (Régimbart, 1891)
  - Posterior margin of elytral glabrous region evenly curved towards suture ..... *P. jilanzhui* (Mazzoldi, 1998)
6. Pronotum and elytra without yellow or reddish lateral border ..... 7
  - Pronotum and elytra with yellow or reddish lateral border ..... 8
7. Protarsus in male wider than protibia or at least as wide as protibia; apex of aedeagus needle-shaped; glabrous region in female produced at posterolateral area posteriorly ..... *P. apicalis subapicalis* (Ochs, 1930)
  - Protarsus in male narrower than protibia; apex of aedeagus regularly narrowed; glabrous region in female not produced at posterolateral area, but forming a clear angle ..... *P. landaisi* (Régimbart, 1892)
8. Elytra very smooth, without obvious reticulation or punctation; epipleural angle of elytra prolonged into a spine ..... *P. productus* (Régimbart, 1884)
  - Elytra with obvious punctation; epipleural angle of elytra not prolonged into a spine ..... 9
9. Lateral pubescence on pronotum strongly expanded inward anteriorly, at least reaching middle of the eye ..... 10
  - Expansion of lateral pubescence on anterior pronotum never reaching middle of the eye, at most reaching outer third of the eye ..... 16
10. Surface of elytra with dense micro-punctation among the larger punctation (Fig. 13F) ..... 11
  - Surface of elytra without obvious micro-punctations among the punctation ..... 13
11. Dorsal habitus broader, epipleural angle not acute, narrowly rounded ..... *P. melli* (Ochs, 1925)
  - Dorsal habitus elongate, epipleural angle acute (Fig. 12G), but never prolonged into a spine ..... 12
12. Elytral glabrous region strongly sexually dimorphic: elytral glabrous region lanceolate in posterior  $\frac{1}{2}$  in male, elongate oval and weakly acuminate posteriorly in female (Fig. 12A–D) ..... *P. coomani* (Peschet, 1925)
  - Elytral glabrous region without evident sexual dimorphism, regularly cordiform ..... *P. procerus* (Régimbart, 1883)



13. Epipleural angle acute, but never prolonged into a spine ..... *P. hainanensis* sp. nov.  
– Epipleural angle not acute, narrowly rounded ..... 14
14. Lateral borders on pronotum and elytra testaceous to dark testaceous .....  
..... *P. emmerichi* (Falkenström, 1936)  
– Lateral borders on pronotum and elytra yellow ..... 15
15. Elytral glabrous region oval, not acuminate posteriorly .....  
..... *P. cribratellus cribratellus* (Régimbart, 1891)  
– Elytral glabrous region cordiform, obviously acuminate posteriorly .....  
..... *P. figuratus* (Régimbart, 1892)
16. Lateral pubescence on pronotum not expanded or slightly expanded inwards anteriorly ..... 17  
– Lateral pubescence on pronotum distinctly expanded inwards to about external third of the eye  
anteriorly ..... 20
17. Lateral pubescence on pronotum slightly expanded inwards; protarsus of male strongly expanded,  
almost as long as protibia ..... 18  
– Lateral pubescence on pronotum never expanded inwards anteriorly, only reaching external edge of  
the eye; protarsus of male obviously shorter than tibiae ..... 19
18. Aedeagus terminating with a reverse heart shape ..... *P. chalceus* (Ochs, 1936)  
– Aedeagus not terminating with a reverse heart shape, rounded apically .....  
..... *P. schillhammeri* (Mazzoldi, 1998)
19. Truncature of elytra straight ..... *P. severini* (Régimbart, 1892)  
– Truncature of elytra slightly oblique ..... *P. assequens* (Ochs, 1936)
20. Protarsus in male about as long as protibia ..... 21  
– Protarsus in male clearly longer than protibia ..... 22
21. Elytral glabrous region regularly oval in both sexes, much wider posteriorly in female; median lobe  
broader apically ..... *P. wui* (Ochs, 1932)  
– Elytral glabrous region regularly oval in male, with a postero-lateral expansions on each side in  
female (Fig. 5A–B) ; median lobe narrower apically ..... *P. shangchuanensis* sp. nov.
22. Elytral glabrous region with minor sexual dimorphism, regularly oval in both sexes, wider posteriorly  
in female ..... *P. jiangxiensis* sp. nov.  
– Elytral glabrous region on elytra strongly sexually dimorphic: regularly oval in male, with a postero-  
lateral expansions on each side in female (Mazzoldi, 1998: figs 1, 4a) ... *P. wangi* (Mazzoldi, 1998)

## Discussion

Since the 1950s, many new species of true aquatic beetles, such as Dytiscidae and Hydrophilidae, have been described from the Oriental Region (e.g., Schönmann 1995; Hendrich & Yang 1999; Komarek 2013; Balke *et al.* 2017; Jia *et al.* 2017). However, Gyrinidae have been poorly studied in the Oriental Region except for some contributions to the Chinese (Mazzoldi 1998) and Indian (Vazirani 1984; Miller *et al.* 2008) faunas. Although we can assume that Gyrinidae are fairly well known at generic level, it is quite believable that there is still an enormous potential for more new species to be described in this area. Our discovery of three new species of *Patrus* and newly recorded species for China, extends the known range of Gyrinidae in China.

*Patrus* is a typical Oriental group and all species of the genus are distributed in the Oriental Region except for one unusual species occurring in central Africa. In China specifically, all species are only known from south of the Qinling-Huaihe Line, which is typically considered the northern border of the Oriental region in China (Cox 2001). The species diversity of the genus in China is rather high (37 species known to date), especially in Fujian, Guangdong, Guangxi and Yunnan Provinces, probably because of the warmer climate condition. In contrast to the Indian and Indochinese peninsular fauna, 21 Chinese species were only known from China, some of which seem to be very local and are likely endemic (e.g., *P. emmerichi*, *P. chinensis*). Habitats of *Patrus* show that many species live on the surface of running water, some living on the surface of standing water or small ponds by rivers, covered with grass (e.g., *P. productus*). Based on our experiences during field collection, it seems that species occurring in standing water tend to have larger ranges than species in running waters. This assumption needs to be tested in further studies.

Yunnan is an interesting area for the Chinese fauna of *Patrus*, where abundant species occur. Yunnan is a border province neighbouring several countries of the Indochinese Peninsula without obvious geographical barriers, making its *Patrus* fauna more similar to that of the Indochinese Peninsula than to other areas of China. Of the seven species of *Patrus* known from Yunnan, six are shared with the Indochinese Peninsula fauna, while none is shared with other areas in China. Unfortunately, the fauna of *Patrus* of the Indochinese Peninsula is currently even less known when compared to the Chinese fauna. Hence, any future revisionary work on Chinese *Patrus* fauna should include as many species as possible occurring in adjacent countries in the Indochinese Peninsula.

## Acknowledgements

We are very grateful to Dr Grey Gustafson and an anonymous reviewer for their professional opinions on revising this manuscript. We are indebted to Dr Chen Jun and Dr Kui-yang Zhang, both in Chinese Academy of Sciences, Institute of Zoology, Beijing, China, for their kind help in examining specimens. We are grateful to Mr Antoine Mantilleri from the Muséum national d'histoire naturelle, Paris, for taking the photographs of some type material deposited in MNHN. We are also indebted to Mr Zuqi Mai for helping the first author in examining the material. This study was supported by the National Natural Science Foundation of China (grant no. 31772494).

## References

- Aubé C. 1836–1838. *Iconographie et Histoire Naturelle des Coléoptères d'Europe. Tome Cinquième. Hydrocanthares*. Méquignon-Marvis, Paris.
- Balke M., Bergsten J., Wang L.-J. & Hendrich L. 2017. A new genus and two new species of Southeast Asian Bidessini as well as new synonyms for Oceanian species (Coleoptera, Dytiscidae). *ZooKeys* 647: 137–151. <https://doi.org/10.3897/zookeys.647.11231>
- Blanchard E. 1843. Insectes. In: Hombron J.B. & Jacquinot H. (eds) *Atlas d'Histoire Naturelle Zoologie, par MM. Hombron et Jacquinot, chirurgiens de l'expédition*. Gide, Paris.
- Cheo M.T. 1934. The Gyrinidae of China. *Peking Natural History Bulletin* 8 (3): 205–239.
- Cox B. (2001) The biogeographic regions reconsidered. *Journal of Biogeography* 28 (4): 511–523. <https://doi.org/10.1046/j.1365-2699.2001.00566.x>
- de Motschulsky V. 1866. Catalogue des insectes reçus du Japon. *Bulletin de la Société impériale des Naturalistes de Moscou* 39: 163–200.
- Deyrolle H. & Fairmaire L. 1878. Descriptions de coléoptères recueillis par M. l'abbé David dans la Chine centrale. *Annales de la Société entomologique de France* 8: 87–140.

- Fabricius J.C. 1775. *Systema Entomologiae, Sistens Insectorum Classes, Ordines, Genera, Species, Adiectis Synonymis, Locis, Descriptionibus, Observationibus*. Libraria Kortii, Flensburgi et Lipsiae.
- Fabricius J.C. 1798. *Entomologia Systematica*. apud Proft et Storch, Hafniae.
- Fabricius J.C. 1801. *Systema Eleutheratorum secundum ordines, genera, species; adiectis synonymis, locis, observationibus, descriptionibus. Tomus I*. Bibliopolii Academici Novi, Kiliae.
- Falkenström G. 1936. Halipliden, Dytisciden und Gyriniden aus West- und Central-China (Coleoptera). *Lingnan Science Journal* 15 (1–2): 79–99, 225–247.
- Fery H. & Hájek J. 2016. Nomenclatural notes on some Palaearctic Gyrinidae (Coleoptera). *Acta Entomologica Musei Nationalis Pragae* 56 (2): 645–663.
- Gustafson G.T. & Miller K.B. 2017. Systematics and evolution of the whirligig beetle tribe Dineutini (Coleoptera: Gyrinidae: Gyrininae). *Zoological Journal of the Linnean Society* 181 (1): 118–150. <https://doi.org/10.1093/zoolinnean/zlw014>
- Hájek J. & Fery H. 2017. Family Gyrinidae Latreille, 1810. In: Löbl I. & Löbl D. (eds), *Catalogue of Palaearctic Coleoptera. Volume 1. Revised and Updated Edition. Archostemata – Myxophaga – Adephaga*: 22–29. Leiden, Brill.
- Hájek J. & Fery H. 2019. Catalogue of Palearctic Gyrinidae (Coleoptera). Internet version. 1–14. Available from [http://waterbeetles.eu/documents/PAL\\_CAT\\_Gyrinidae\\_2019.pdf](http://waterbeetles.eu/documents/PAL_CAT_Gyrinidae_2019.pdf) [accessed 1 Jan. 2019]
- Hatch M. 1925. The phylogeny and phylogenetic tendencies of Gyrinidae. *Paper of the Michigan Academy of Science, Arts and Letters* 5: 429–467.
- Hendrich L. & Yang C.M. 1999. A contribution to the knowledge of the water beetle fauna of Pulau Tioman, Peninsular Malaysia (Coleoptera: Noteridae, Dytiscidae, Hydrophilidae, Hydraenidae, Scirtidae, Limnichidae). *The Raffles Bulletin of Zoology Supplement No. 6*: 253–262.
- Holmen M. 1987. The aquatic Adephaga (Coleoptera) of Fennoscandia and Denmark, I. Gyrinidae, Haliplidae, Hygrobiidae and Noteridae. *Fauna Entomologica Scandinavica* 20: 1–168.
- Hope F.W. 1842. Observations on the Coleoptera of Port Essington, in Australia, with descriptions of the following new species. *Journal of Proceedings of the Entomological Society of London* 1841: 43–50.
- Jia F.-L., Lin R.-C., Chan E., Skale A. & Fikáček M. 2017. Two new species of *Coelostoma* Brullé, 1835 from China and additional faunistic records of the genus from the Oriental Region (Coleoptera: Hydrophilidae: Sphaeridiinae: Coelostomatini). *Zootaxa* 4232 (1): 113–122. <https://doi.org/10.11646/zootaxa.4232.1.8>
- Komarek A. 2013. A revision of *Anacaena* Thomson, 1859 X. Laos, Malaysia, Myanmar, Thailand, and Vietnam (Coleoptera: Hydrophilidae). *Entomologica Basiliensia et Collectionis Frey* 34: 137–177.
- Macleay W.S. 1825. *Annulosa Javanica, or an Attempt to Illustrate the Natural Affinities and Analogies of the Insects Collected in Java by Thomas Horsfield, M.D. F.L. & G.S. and Deposited by Him in the Huseum of the Honourable East-India Company. Number I*. Kingsbury, Parbury & Allen, London.
- MacLeay W.S. 1871. Notes on a collection of insects from Gayndah. *Transactions of the Entomological Society of New South Wales* 2 (2): 79–205.
- Marsham T. 1802. *Entomologia Britannica. Vol. 1. Coleoptera*. White, Londini.
- Mazzoldi P. 1995. Gyrinidae: Catalogue of Chinese Gyrinidae (Coleoptera). In: Jäch M.A. & Ji L. (eds) *Water beetles of China*: 155–172. Zoologisch-Botanische Gesellschaft in Österreich and Wiener Coleopterologenverein, Vienna.



- Mazzoldi P. 1998. Gyrinidae: New species of *Orectochilus* Dejean, 1833 subgenus *Patrus* Aubé, 1838 (Coleoptera). In: Jäch M.A. & Ji L. (eds) *Water Beetles of China*: 137–146. Zoologisch-Botanische Gesellschaft in Österreichs and Wiener Coleopterologenverein, Vienna.
- Mazzoldi P. 2003. Family Gyrinidae Latreille, 1810. In: Löbl I. & Smetana A. (eds) *Catalogue of Palaearctic Coleoptera. Volume 1. Archostemata – Myxophaga – Adephaga*: 26–30. Apollo Books, Stenstrup.
- Miller K.B. & Bergsten J. 2012. Phylogeny and classification of whirligig beetles (Coleoptera: Gyrinidae): relaxed-clock model outperforms parsimony and time-free Bayesian analyses. *Systematic Entomology* 37 (4): 706–746. <https://doi.org/10.1111/j.1365-3113.2012.00640.x>
- Miller K.B. & Mazzoldi P., Wheeler Q.D. 2008. An unusual new species of Gyrinidae (Coleoptera), *Orectochilus orbisonorum* n. sp., from India. *Zootaxa* 1712: 65–68. <https://doi.org/10.11646/zootaxa.1712.1.4>
- Modeer A. 1776. Anmärkningar angående släktet *Gyrinus* [Notes on the genus *Gyrinus*]. *Physiographiska Sällskapets Handlingar* 1 (3): 155–162.
- Montrouzier P. 1860. Essai sur la faune entomologique de la Nouvelle-Calédonie (Balade) et des îles des Pins, Art, Lifu etc. *Annales de la Société entomologique de France* (3) 8: 229–308.
- Ochs G. 1924. Über neue und interessante Gyriniden aus dem British Museum in London. *Entomologische Blätter* 20: 228–244.
- Ochs G. 1925. Descriptions of new Asiatic Gyrinidae. *Records of the Indian Museum* 27: 193–204.
- Ochs G. 1926. Die Dineutini. 2. Tribus der Unterfamilien Enhydrinae Fam. Gyrinidae, (Col). *Entomologische Zeitschrift* 40: 61–197.
- Ochs G. 1927. Ueber sibirische Gyriniden. *Entomologische Zeitschrift* 41 (2): 46–49.
- Ochs G. 1928. Über die Gyriniden Borneo's. *Entomologische Blätter* 24: 41–45, 78–85, 93–103.
- Ochs G. 1929. The present status of knowledge about Chinese Gyrinidae. *Lignan Science Journal* 7: 715–720.
- Ochs G. 1930. *Catalogue of Indian insects. Part 19. -Gyrinoidea*. Government of India Central Publications Branch, New Delhi.
- Ochs G. 1932. Note on species of Gyrinidae from China. *Peking Natural History Bulletin* 6: 57–58.
- Ochs G. 1936. Ein neuer Beitrag zur Kenntnis der Gyriniden-Fauna Chinas unter Berücksichtigung einiger verwandter Arten aus Hinter-Indien. *Festschrift für Prof. Dr. Embrik Strand* 1: 601–613.
- Ochs G. 1942. Über die von Herrn J. Klapperich in China 1937–38 gesammelten Gyriniden. *Mitteilungen der Münchner Entomologischen Gesellschaft* 32: 201–207.
- Pascoe F.P. 1877. Descriptions of new genera and species of New-Zealand Coleoptera. – Part IV. *Journal of Natural History* 19 (110): 140–147.
- Peschet R. 1923. Faune entomologique de l'Indochine. Gyrinidae. *Opuscules de l'Institut Scientifique de l'Indochine* 1 (6): 121–136.
- Peschet R. 1925. Description d'un *Orectochilus* nouveau du Tonkin [Col. Gyrinidae]. *Bulletin de la Société entomologique de France* 30 (15): 253–254.
- Régimbart M. 1882. Essai monographique de la famille des Gyrinidae: 1er partie. *Annales de la Société entomologique de France* 6 (2): 379–458.

- Régimbart M. 1883. Essai monographique de la famille des Gyrinidae:2<sup>e</sup> partie. *Annales de la Société entomologique de France* 6 (3): 121–190.
- Régimbart M. 1884. Essai monographique de la famille des Gyrinidae:3<sup>e</sup> partie. *Annales de la Société entomologique de France* 6 (3): 381–482.
- Régimbart M. 1886. Essai monographique de la famille des Gyrinidae:1<sup>er</sup> supplément. *Annales de la Société entomologique de France* 6 (6): 247–272.
- Régimbart M. 1888. Viaggio di Leonardo Fea in Birmania e regioni vicine. *Annali del Museo Civico di Storia Naturale di Genova* 26: 609–623.
- Régimbart M. 1891. Gyrinidae de Birmanie. In: Doria G. & Gestro E.R. (eds) *Storia naturale di Genova, Serie 2a, Vol. X*: 547–554. Tipografia Del R. Istituto Sordo-Muti, Genova.
- Régimbart M. 1892. Essai monographique de la famille des Gyrinidae: 2<sup>e</sup> supplément. *Annales de la Société entomologique de France* (60): 663–752.
- Régimbart M. 1902. Coleoptera. Fam. Gyrinidae. In: Wytzman I.P. (ed.) *Genera Insectorum*. V. Verteneui and L. Desmet, Brussels, Belgium.
- Régimbart M. 1907. Essai monographique de la famille des Gyrinidae: 3<sup>e</sup> supplément. *Annales de la Société entomologique de France* (76): 137–245.
- Ryndevich S.K., Foster G.N., Bilton D.T., Aquilina R., Turner C.R., Shaverdo H. & Prokin A.A. 2014. Additions to the Belarusian fauna of water beetles. *Latissimus* (35): 32–42.
- Satô M. 1985. New aquatic beetles from Japan. *Transactions of the Shikoku Entomological Society* 17: 51–55.
- Schönmann H. 1995. Revision der Gattung *Pelthydrus* Orchymont 2. Teil: *Pelthydrus* s.str. (Coleoptera: Hydrophilidae). *Koleopterologische Rundschau* 65: 105–144.
- Sharp D. 1873. The water beetles of Japan. *The Transactions of the Entomological Society of London*: 45–67.
- Short A.E.Z. 2018. Systematics of aquatic beetles (Coleoptera): current state and future directions. *Systematic Entomology* 43 (1): 1–18. <https://doi.org/10.1111/syen.12270>
- Suffrian E. 1842. Fragmente zur genaueren Kenntniss deutscher Käfer. 3. *Gyrinus* Geoffr. *Entomologische Zeitung* 3: 219–237.
- Takizawa M. 1931. The Gyrinidae of Japan. *Insecta matsumurana* 6 (1–2): 13–21.
- Uyttenboogaart D.L. 1915. Description d'une nouvelle espece de *Dineutes* (Fam. Gyrinidae) de l'île de Formosa. *Zoologische Mededelingen* 1: 140.
- Wu C.F. 1932. Aquatic insects of China. Article I. Catalogue of Chinese Gyrinidae. *Peking Natural History Bulletin* 6 III. 63–73.
- Zaitzev F.A. 1908. Berichtigungen und Zusätze zu den Haliplidae, Dytiscidae und Gyrinidae in den neuesten Katalogen der Coleoptera. *Russkoe Entomologicheskoe Obozrenie* 7 (1907): 114–124.

*Manuscript received: 30 October 2020*

*Manuscript accepted: 27 July 2021*

*Published on: 2 September 2021*

*Topic editor: Nesrine Akkari*

*Section editor: Max Barclay*

*Desk editor: Eva-Maria Levermann*

Printed versions of all papers are also deposited in the libraries of the institutes that are members of the *EJT* consortium: Muséum national d'histoire naturelle, Paris, France; Meise Botanic Garden, Belgium; Royal Museum for Central Africa, Tervuren, Belgium; Royal Belgian Institute of Natural Sciences, Brussels, Belgium; Natural History Museum of Denmark, Copenhagen, Denmark; Naturalis Biodiversity Center, Leiden, the Netherlands; Museo Nacional de Ciencias Naturales-CSIC, Madrid, Spain; Real Jardín Botánico de Madrid CSIC, Spain; Zoological Research Museum Alexander Koenig, Bonn, Germany; National Museum, Prague, Czech Republic.



# ZOBODAT - [www.zobodat.at](http://www.zobodat.at)

Zoologisch-Botanische Datenbank/Zoological-Botanical Database

Digitale Literatur/Digital Literature

Zeitschrift/Journal: [European Journal of Taxonomy](#)

Jahr/Year: 2021

Band/Volume: [0767](#)

Autor(en)/Author(s): Liang Zulong, Angus Robert B., Jia Fenglong

Artikel/Article: [Three new species of \*Patrus\* Aubé with additional records of Gyrinidae from China \(Coleoptera, Gyrinidae\) 1-39](#)