



# *Entomofauna*

ZEITSCHRIFT FÜR ENTOMOLOGIE

Band 23, Heft 27: 333-336

ISSN 0250-4413

Anselden, 31. Dezember 2002

## **A new genus and species of Acaenitinae (Hymenoptera, Ichneumonidae)**

**Mao-Ling SHENG**

### **Abstract**

A new genus, *Cumatocinetus* SHENG **gen. nov.**, and a new species, *Cumatocinetus inareolatus* SHENG **sp. nov.**, belonging to the subfamily Acaenitinae of the family Ichneumonidae, collected in Gansu Province, China, are described. Type specimens are deposited in General Station of Forest Pest Management (GSFPM), the State Forestry Administration, P. R. China.

### **Zusammenfassung**

Eine neue Gattung, *Cumatocinetus* SHENG **gen. nov.**, und eine neue Art, *Cumatocinetus inareolatus* SHENG **sp. nov.**, der Unterfamilie Acaenitinae (Ichneumonidae), werden beschrieben. Die Tiere wurden in der Provinz Gansu, China, gesammelt. Die Typus-Exemplare befinden sich in der General Station of Forest Pest Management (GSFPM), State Forestry Administration, P. R. China.

### ***Cumatocinetus* SHENG **gen. nov.****

Type species: *Cumatocinetus inareolatus* SHENG **sp. nov.**

Description. Front wing 6.5 - 10 mm. Clypeus moderately long, flat, its apex thin, weakly convex. Malar space 0.88 - 0.98 time as long as the basal width of mandible. Lower tooth of mandible about as long as upper tooth. Notaulus very weak and shallow, reaching 0.6 - 0.9 the distance to center of mesoscutum. Epomia absent or short and indistinct. Prepectal carina present. Propodeum without carinae except that pleural carina is more or less distinct. Propodeal spiracle near basal 0.45 of propodeum. Legs moderately strong. Areolet absent, the intercubitus reclivous. Nervellus intercepted at upper 0.18 -

0.25. Underside of second trochanter of hind leg flat or weakly concave, its apex convex backward. Tarsal claws simple. Female subgenital plate reaching to the end of abdomen, with a median apical notch. Ovipositor sheath 2.0 - 2.2 times as long as body. Apical section of ovipositor depressed. Lower valve more wide than upper valve, with ridges.

Etymology: The genus name is based on the ovipositing act. The lower valve of ovipositor has two groups of ridges which may make it easier for the ovipositor to drill into the wood and lay the egg in the host. Gender: masculine.

This genus is similar to *Procinetus* FOERSTER, 1868, and to *Eremocinetus* VIKTOROV, 1964. It can be distinguished from them by following features: Underside of second trochanter of hind leg flat or weakly concave, its apex convex backward. From *Procinetus* FOERSTER also distinguished by clypeus very flat, its apex thin, weakly convex, malar space 0.88 - 0.95 times as long as the basal width of mandible, areolet absent, apical section of ovipositor depressed, lower valve more wide than upper valve, with about 8 vertical ridges, which are divided into two groups. From *Eremocinetus* VIKTOROV it can be distinguished by the characters mentioned above and the following key.

In the key to the genera (TOWNES 1971), the new genus can be inserted as follows:

- 3. Areolet absent ..... 3<sup>†</sup>
- Areolet present ..... 4
- 3<sup>†</sup>. Underside of second trochanter of hind leg flat or weakly concave, its apex convex backward. Prepectal carina present. Lower tooth of mandible about as long as upper tooth. Ovipositor slender. Tarsi and tarsal claws not unusually long and slender. China ..... *Cumatocinetus* SHENG gen. nov.
- Second trochanter normal. Prepectal carina absent. Lower tooth of mandible about 2.5 as long as upper tooth. Ovipositor stout. Tarsi and tarsal claws very long and slender. Russia (Tadzikistan) ..... 6. *Eremocinetus* (p.163)

*Cumatocinetus inareolatus* SHENG sp. nov.

♀. Body 10 - 11 mm long. Fore wing 8 - 10.8 mm long. Inner margins of eyes parallel. Face 1.9 - 2.1 times as wide as long, with dense punctures; its center convex longitudinally and with fine longitudinal wrinkles. Clypeus flat, glossy; its front margin convex forward, upper lateral corner convex obliquely; upper lateral corner and subapical part with punctures, the rest with fine transverse wrinkles except apical center margin. Labrum big and conspicuously exposed beyond the apex of clypeus, with punctures and pubescence. Mandible strong, its basal half with longitudinal wrinkles, punctured at base, lower tooth about as long as upper tooth. Malar space 0.92 - 0.98 time as long as basal width of mandible. Subocular sulcus distinct. Temple about 1.1 as long as eye, weakly convex, with dense punctures, hind part weakly convergent backward. Vertex with dense unclear punctures, behind stemmaticum with short transverse wrinkles. Postocellar line about 0.70 - 0.74 time as long as ocular-ocellar line. Frons with dense unclear punctures, its lower part concave. Antenna filiform, flagellum with 34 - 35 segments. Occipital carina complete. Thorax with dense punctures. Lateral groove of pronotum with short transverse wrinkles. Epomia weak or indistinct. Mesonotum evenly convex. Notaulus weak, nearly not reaching to the center of mesonotum. About front 0.3 of mesopleurum weakly convex, its lower hind margined, somewhat like a weak edge. Prepectal carina distinct. Wing brownish hyaline. Nervulus opposed or distad of basal vein. Ramulus as a weak stub.

Without areolet. Intercubitus weakly reclivous, as long as or a little shorter than the distance between it to second recurrent vein. Postnervulus intercepted below its middle. Nervellus reclivous, intercepted at upper 0.18 - 0.25. Legs strong. Underside of second trochanter of hind leg flat or weakly concave, lateral margins like weak carinae, its apex convex backward. Claw simple. Propodeum short, with shallow longitudinal median groove; near median line and apical central part smooth, without puncture, the latter sometimes weakly rough; the rest with dense punctures. Pleural carina complete or only hind section (from spiracle to apex of propodeum) present. On its base with two small tubercles, which are the trace of median longitudinal carinae. Propodeal spiracle oblique elliptic, long diameter 2 times as long as short diameter. First tergite of abdomen about 1.8 times as long as its apical width, middle part weakly bending upward and with dense punctures, both sides of its apical part punctured densely; median dorsal and dorsolateral carinae reaching about to half of spiracle; spiracle elliptic, near basal 0.4. The rest tergites transverse. Second tergite punctured unevenly (basal sides and subapex denser); basal margin with transverse groove (broken at middle); basal lateral corner with oblique groove. Third tergite with dense fine punctures. Fourth tergite with finer punctures than third tergite, apical center triangular membranously. Rest tergites punctured unclearly. Hind margin of fifth tergite with bigger membranous triangle on its center than fourth tergite. Apical half of sixth tergite with membranous semicircle. Subgenital plate big, apex truncate, with a median apical notch. Ovipositor sheath 2.0 - 2.2 times as long as body. Apical section of ovipositor depressed. Lower valve wider than upper valve, a little enclosed by upper valve, with about 8 vertical ridges, which are divided into two groups.

Reddish brown, except the following parts: Antennae and veins darkish brown; stigma yellowish brown; clypeal foveae, apical part, labrum, basal part and apical teeth of mandibles, palpi, hind margin (wider downwards) of temple, occiput, propleurum, most part of pronotum, sutures of between each part of thorax, a fleck on upper hind corner of mesopleurum, mesosternum, upper division of metapleurum, lower half of metapleurum, ventral sides of coxae and trochanters (except the flat or weak concave part on underside of

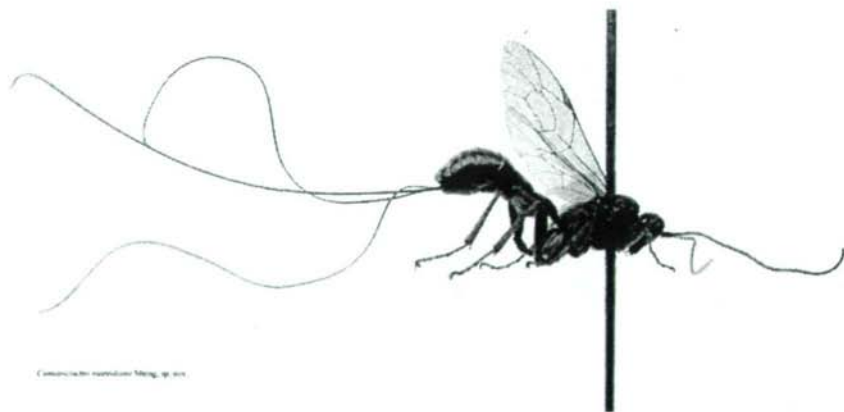


Fig.: *Cumatocinetus inareolatus* SHENG sp. nov.

second trochanter of hind leg yellowish brown), ventral sides of middle and hind femora, basal part of first abdominal tergite, brownish black to black; both sides (more or less) of apical part of abdomen and subgenital plate darkish brown to blackish brown.

Holotype, ♀, China: Maxianshan, 3400-3600 m, Yuzhong County, Gansu Province, 5.Viii.1993 (Lu Nan) (GSFPM). - Paratypes: 2 ♀♀, same data as holotype.

### References

- AUBERT, J.F. - 1969. Les Ichneumonides ouest-paléarctiques et leurs hotes 1. Pimplinae, Xoridinae, Acaenitinae. - Laboratoire d'Evolution des Etres Organises, Paris, 302pp.
- FITTON, M.G. - 1981. The British Acaenitinae (Hymenoptera: Ichneumonidae). - Entomologist's Gazette 32: 185-192.
- GUPTA, V.K. - 1987. The Ichneumonidae of the Indo-Australian area (Hymenoptera). - Memoirs of the American Entomological Institute, No.41 (Part 2): 598-1210.
- KASPARYAN, D.R. - 1981. A guide to the insects of the European part of the USSR. Hymenoptera, Ichneumonidae. - Opredeliteli Faune SSSR, 3 (3): 477-506 [in Russian].
- MEYER, N.F. - 1934. Parasitic Hymenoptera in the family Ichneumonidae of the USSR and adjacent countries. Keys to the fauna of the USSR. Vol. 3. Pimplinae. - Opredeliteli Faune SSSR 15 (3): 1-271 [in Russian].
- SHENG, M.-L. & ZHANG, Y.-X. - 1999. Two new record species of the genus *Coleocentrus* (Hymenoptera: Ichneumonidae) with a key to known species from China. - Entomotaxonomia 21: 223-224 [in Chinese].
- TOWNES, H.K. - 1971. The genera of Ichneumonidae, Part 4. - Memoirs of the American Entomological Institute 17: 1-372.
- VIKTOROV, G.A. - 1964. New species of Ichneumon-flies from Tadzhikistan. - Doklady Akademii Nauk Tadzhikskoi SSR 7 (8): 31-35 [in Russian].
- VIKTOROV, G.A. - 1968. New Ichneumonidae from tribus Acoenitini (Hymenoptera, Ichneumonidae). In ZHELOKHOVTSSEV A.N. & ZIMINA L.V. (eds.): Investigations on the fauna of the Soviet Union (Insects). - Sbornik Trudov Zoologicheskogo Muzeya. Moskva 11: 44-46 [in Russian].
- YU, D.S. & HORSTMANN, K. - 1997. A catalogue of world Ichneumonidae (Hymenoptera). - Memoirs of the American Entomological Institute 58: 1-1558.

Author's address:

Mao-Ling SHENG

General Station of Forest Pest Management, State Forestry Administration  
58, Huanghe North Street, Shenyang 110034, P. R. China

---

Druck, Eigentümer, Herausgeber, Verleger und für den Inhalt verantwortlich:

Maximilian SCHWARZ, Konsulent für Wissenschaft der O.Ö. Landesregierung,  
Eibenweg 6, A-4052 Ansfelden

Redaktion: Erich DILLER (ZSM), Münchhausenstrasse 21, D-81247 München, Tel.(089)8107-159

Fritz GUSENLEITNER, Lungitzerstrasse 51, A-4222 St. Georgen / Gusen

Wolfgang SCHACHT, Scherrerrstrasse 8, D-82296 Schöngeising, Tel. (089) 8107-146

Erika SCHARNHOP, Himbeerschlag 2, D-80935 München, Tel. (089) 8107-102

Johannes SCHUBERTH, Bauschingerstrasse 7, D-80997 München, Tel. (089) 8107-160

Emma SCHWARZ, Eibenweg 6, A-4052 Ansfelden

Thomas WITT, Tengstrasse 33, D-80796 München

Postadresse: Entomofauna (ZSM), Münchhausenstrasse 21, D-81247 München, Tel.(089) 8107-0,

Fax (089) 8107-300, e-mail: Erich.Diller@zsm.mwn.de

# ZOBODAT - [www.zobodat.at](http://www.zobodat.at)

Zoologisch-Botanische Datenbank/Zoological-Botanical Database

Digitale Literatur/Digital Literature

Zeitschrift/Journal: [Entomofauna](#)

Jahr/Year: 2002

Band/Volume: [0023](#)

Autor(en)/Author(s): Sheng Mao-Ling

Artikel/Article: [A genus and species of Acaeitinae \(Hymenoptera, Ichneumonidae\). 333-336](#)