



Entomofauna

ZEITSCHRIFT FÜR ENTOMOLOGIE

Band 32, Heft 28: 393-396

ISSN 0250-4413

Ansfelden, 29. April 2011

***Stenus falini* nov. sp., a new species from North America
(Coleoptera, Staphylinidae)
(321st Contribution to the Knowledge of Steninae)**

Volker PUTHZ

Abstract

Stenus falini nov. sp. is described from Kansas, U. S. A.

Zusammenfassung

Stenus falini nov. sp., eine Art der *Stenus-palposus*-Gruppe wird aus Kansas, U.S.A. beschrieben.

Introduction

Amongst recently collected *Stenus*-material from Kansas, U. S. A., a new species of the group of *S. palposus* ZETTERSTEDT was found, which is described below.

Material and methods

The morphological studies were carried out using a stereoscopic microscope (Leitz) and a Carl Zeiss compound microscope. A digital camera (Nikon Coolpix 995) was used for the photographs. The genitalia are embedded in Euparal (soluble in alc. abs.).

The following acronyms are used: DE= average distance between eyes; EL= greatest length of elytra; EW= greatest width of elytra; HW= head width; PL= pronotal length; PM = proportional measurements (1 unit = 0,025 mm; PW= pronotal width; SL= sutural length of elytra.

***Stenus falini* nov. sp.** (Figs 1-3, 5, 7)

Type material: Holotype (♂) : U.S.A.: Kansas, Woodson Co, Cross Timbers State Park, Sandstone Campground, 37°77637'N, 95°94507'W, ex floating flood debris, 10.VI.2010, Z. H. Falin: in the Kansas University Natural History Museum.

Description: Black, matt, coarsely and densely, at parts confluent punctate; pubescence short, dense, silvery. Segment 1 of maxillary palpi and basal third of segment 2 yellowish, rest brown. Antennae and legs dark brown to blackish brown.

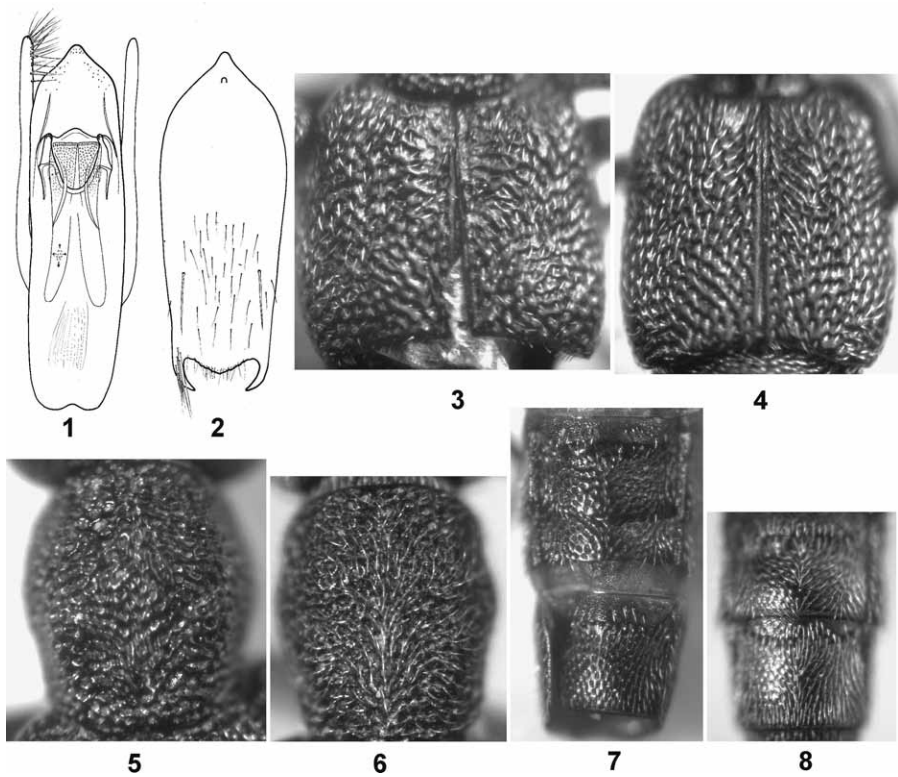
Length: 4,1mm (extended) (forebody: 2.0mm).

PM of the HT: HW: 34,5; DE: 18; PW: 29; PL: 33; EW: 40; EL: 37; SL: 31.

Male: Femora broadened, meso- and metatibiae with a strong preapical spur. Sternite 8 with a moderately deep triangular excision, which is as deep as 1/11 of the sternite's length. Sternite 9 (fig. 2). Tergite 10 rounded at posterior margin. Aedeagus (fig. 1).

Female: Unknown.

Head distinctly narrower than elytra, frons moderately broad with two distinct longitudinal furrows, median portion as broad as each of the side portions, shallowly elevated, not extending to the level of dorsal eye margins; punctation coarse and very dense, diameter of punctures slightly larger than widest cross section of antennal segment 3, interstices generally smaller than half diameter of punctures. Antennae short, extending somewhat beyond the middle of pronotum when reflexed, penultimate segments slightly longer than broad. Pronotum (fig. 5) longer than broad, broadest in about middle, sides nearly straightly narrowed in anterior half, distinctly concave in posterior half; surface uneven: a transverse impression near anterior margin, a slight impression in anterior half on each side of the middle, and a more distinct impression in posterior half, on each side of the middle; sculpture coarse and confluent longitudinally. Elytra (fig. 3) distinctly broader than long, shoulders rectangular, sides moderately convex, posterior margin broadly emarginated; punctation coarse and very dense, at places shortly confluent, diameter of punctures as large as apical cross section of antennal segment 2. Abdomen moderately broadly margined, paratergites of tergite 4 at most as broad as antennal segment 2, bases of tergites with 4 distinct carinae, posterior margin of tergite 7 with a moderately narrow membranous fringe (the species is fully winged); punctation throughout coarse and dense, punctures on tergite 3 as large as medial cross section of antennal segment 3, interstices much smaller than half diameter of punctures, punctures on tergite 7 slightly less coarse (fig. 7). Legs short, tarsi simple, metatarsi about two thirds as long as metatibiae, segment 1 about as



Figs 1-8: Ventral aspect of aedeagus (1), sternite 9 of male (2), Elytra (3, 4), pronotum (5, 6), tergites 5-7/6,7 (7, 8) of *Stenus falini* nov. sp. (1-3, 5, 7) and *S. stygicus* SAY (4, 6, 8; Kansas: Douglas Co.). Scale 0.1mm.

long as the two following segments combined, about as last as the last segment. Forebody with very faint microsculpture, microsculpture of abdomen almost indistinct.

Comparative notes: This new species belongs to the group of *S. palposus* ZETTERSTEDT (Puthz 1988: 140), in which it is anomalous by the yellowish base of maxillary palpi. The nearest species of this group is the widely distributed and common *S. stygicus* SAY, from which the new species may be distinguished by shorter elytra, different sculpture of pronotum and elytra (see figs 3-4, 5-6), coarsely and densely punctate abdomen (see fig 7-8) and the aedeagus, which, however very close, has a slightly different outline, no ventromedian carina on the apical portion and a differently shaped expulsion clasp.

E t y m o l o g y: This species is named in honour of its collector, Dr. Zachary Falin (University of Kansas Natural History Museum).

Acknowledgement

My thanks are due to Dr. Z. FALIN for proving the material studied here.

References

- PUTHZ, V. (1988): Revision der nearktischen Steninenfauna 3 (Coleoptera, Staphylinidae) Neue Arten und Unterarten aus Nordamerika 210. Beitrag zur Kenntnis der Steninen. – Entomologische Blätter für Biologie und Systematik der Käfer **84**:132-164.

Author's address:

Dr. Volker PUTHZ
Burgmuseum Schlitz
Naturwissenschaftliche Abteilung
Vorderburg 1
36110 Schlitz, GERMANY

E-mail: Stenus.Puthz@t-online.de

Druck, Eigentümer, Herausgeber, Verleger und für den Inhalt verantwortlich:
Maximilian SCHWARZ, Konsulent f. Wissenschaft der Oberösterreichischen Landesregierung, Eibenweg 6,
4052 Ansfelden, ÖSTERREICH, E-Mail: maximilian.schwarz@liwest.at

Redaktion: Erich DILLER, ZSM, Münchhausenstraße 21, 81247 München
Roland GERSTMEIER, Lehrstuhl f. Tierökologie, H.-C.-v.-Carlowitz-Pl. 2, 85350 Freising
Fritz GUSENLEITNER, Lungitzerstraße 51, 4222 St. Georgen / Gusen, ÖSTERREICH
Wolfgang SCHACHT, Scherrerstraße 8, 82296 Schöngesing
Wolfgang SPEIDEL, MWM, Tengstraße 33, 80796 München
Thomas WITT, Tengstrasse 33, 80796 München

Adresse: Entomofauna, Redaktion und Schriftentausch c/o Museum Witt, Tengstrasse 33, 80796
München, Deutschland, E-Mail: thomas@witt-thomas.com; Entomofauna, Redaktion c/o
Fritz Gusenleitner, Lungitzerstr. 51, 4222 St. Georgen / Gusen, ÖSTERREICH
E-Mail: f.gusenleitner@landesmuseum.at

ZOBODAT - www.zobodat.at

Zoologisch-Botanische Datenbank/Zoological-Botanical Database

Digitale Literatur/Digital Literature

Zeitschrift/Journal: [Entomofauna](#)

Jahr/Year: 2011

Band/Volume: [0032](#)

Autor(en)/Author(s): Puthz Volker

Artikel/Article: [Stenus falini nov. sp., a new species from North America \(Coleoptera, Staphylinidae\) \(321st Contribution to the Knowledge of Steninae\) 393-396](#)