

2AA

Hefz 79-84 mit je 24 Kupfern

- mit je 1 Textblatt

coll. cycl. BHK 22/VIII. 50

von Guineentend



I II 2 1 C
des neun und siebenzigsten Hefts.

- Tab. 1. *Coccinella marginepunctata* Fabric.
— 2. *Coccinella sedecimpunctata* Fabric.
— 3. *Coccinella septempunctata* Fabric.
— 4. *Coccinella* (*Argus* Scrib.) *undecimmaculata* Fabric.
— 5. *Coccinella septemnotata* Fabric.
— 6. *Coccinella ocellata* Fabric.
— 7. *Cynips megaptera* Panzer.
— 8. *Ichneumon vaginatorius* Fabric.
— 9. *Ichneumon vaginator*. var.
— 10. *Ichneumon nominator* Fabric.
— 11. *Ichneumon deprimator* Fabric.
— 12. *Ichneumon circulator* Panzer.
— 13. *Ichneumon nuncupator* Panzer.
— 14. *Ichneumon fasciatus* Fabric.
— 15. *Chrysis fulgida* Fabric.
— 16. *Chrysis rufa* Panzer.
— 17. *Agrion Virgo* α Fabric.
— 18. *Agrion Virgo* β Fabric.
— 19. *Lygaeus equestris* Fabric.
— 20. *Lygaeus familiaris* Fabric.
— 21. *Lygaeus hyoscyami* Fabric.
— 22. *Lygaeus faxatilis* Fabric.
— 23. *Papilio nymphalis Iris* Fabric.
— 24. *Papilio nymphalis Illia* Fabric.

DL
428
P19
1796
Lv. 147

H/17984
SCHW 5



Coccinella marginipunctata Fabr.

St. fre.



COCCINELLA *marginepunctata*.

Der am Rande punktirte Marienkäfer.

Coccinella marginepunctata: coleoptris flavis: margine albido, punctis duobus nigris. *Fabric.* Ent. syst. T. I. n. 11. p. 268. *Mant. Inf.* T. I. n. 8. p. 52.

Schaller in Act. soc. nat. cur. Hal. T. I. p. 260.

Illiger Kugelann. Inf. Preuf. T. I. n. 26. p. 438.

Schneider N. Mag. II. p. 156. c.

Scriba Journ. II. n. 144. p. 186.

Panzer Entom. germ. I. n. 5. p. 133.

Habitat in Salicibus.

Haec species a cl. *Illigero* l. c. pro matre *Cocc. sedecimpunctat. Fab.* habetur, quod negavit cl. *Schneider* l. c. qui *Cocc. sedecimpunctat. Fab.* protospeciem *Cocc. marginepunctatae Fab.* esse contendit.

a Magnitudo naturalis. b Eadem aucta.

Neun und siebenzigstes Heft.



Coccinella sedecimpunctata Fabr.

COCCINELLA sedecimpunctata.

Der sechzehnpunktirte Marienkäfer.

Coccinella sedecimpunctata: coleoptris luteis: punctis nigris sedecim, capite quadripunctato. *Fabric.* Ent. syst. T. I. n. 65. p. 280. *Spec. Inf.* T. I. n. 41^o p. 100. *Mant. Inf.* T. I. n. 59. p. 58.

Herbst Nat. d. Käf. V. n. 78. p. 322. tab. 57. fig. 10.

— — *Archiv* IV. n. 11. p. 44. tab. 22. fig. 6.

Illiger Kugelann. Inf. Preuss. T. I. n. 26. b. p. 438.

Schneider N. Mag. II. n. 17. p. 155.

Panzer Entom. germ. I. n. 31. p. 140.

Habitat in Salicibus.

Defunt saepius puncta disci, tunc ad antecedentem refertur; si autem adsint numerum punctorum *sedecim*, computatis marginalibus complent. Vtraque species hinc mox varietas, mox protospecies esse possit.

a Magnitudo naturalis. b Eadem aucta.

[The text on this page is extremely faint and illegible. It appears to be a list or a series of entries, possibly related to botanical specimens, but the specific details cannot be discerned.]



Coccinella septempunctata Fabr.

Wise. fec

COCCINELLA septempunctata.

Der siebenpunktirte Marienkäfer. Der Siebenpunkt. La Coccinelle rouge à sept points noirs. Geoffr.

Coccinella septempunctata: coleoptis rubris: punctis nigris septem. *Fabric.* Entom. syst. T. I. n. 41. p. 274. Syst. Ent. n. 13. p. 81. *Spec. Inf.* T. I. n. 21 p. 96. *Mant. Inf.* T. I. n. 36. p. 57.

Coccinella septempunctata. *Linn.* Syst. Nat. n. 15. p. 581, ed. XIII. n. 15. p. 1649. *Fn. Suec.* n. 477.

Geoffr. *Inf.* T. I. n. 3. p. 321. tab. 6. fig. 1.

Degeer *Inf.* V. p. 428. n. 4. tab. 10. fig. 14.

Scop. *carn.* n. 235.

Schrank. *aust.* n. 98.

Lai chard. *tyr.* *Inf.* I. n. 3. p. 116.

Rösel *Inf.* *Bel.* II. tab. 2.

Sulzer Kennz. d. Inf. p. 6. tab. 3. fig. 13.

Herbst Nat. d. Käf. V. n. 76. p. 317. tab. 57. fig. 8.

Rossi Faun. etrusc. T. I. n. 153. p. 65. ed. *Hellwig*.

Illiger Kugelann. Käf. Preus. I. n. 17. p. 440.

Schäffer Ic. Inf. Ratisb. tab. 9. fig. 7.

Harrer Besch. d. Schöff. Inf. 1 Th. n. 76. p. 79.

Panzer Entom. germ. I n. 18. p. 137.

Vulgatissima ubique plantarum degit. Raro variat. Odontalgiae mederi
plebecula credit, ad instar *Curculion. antidontalgici* Italo.

a Magnitudo naturalis. b Eadem aucta.



Coccinella Argus Scrib.

J. St. fec.

COCCINELLA Argus.

Der Argus-Marienkäfer. La Coccinella Argus. Geoffr.

Coccinella Argus: coleoptris rubris punctis undecim nigris, thorace rubro immaculato. *Scriba Journ.* II. n. 148. p. 188. *Beytr.* II. n. 20. tab. 8. fig. 6.

Geoffr. Inf. T. I. n. 9. p. 325.

Coccinella undecimmaculata: coleoptris rubris: punctis nigris undecim; corpore ferrugineo. *Fabric.* Entom. syst. T. I. n. 54. p. 277. *Mant. Inf.* T. I. n. 47. p. 57.

Illiger Kugelann. Käf. Preuf. I. p. 468.

Panzer Entom. germ. I. n. 30 p. 140.

Habitat minus frequens in Salice, Populo,

a Magnitudo naturalis. b Eadem aucta.

1870
1871

1872
1873
1874
1875
1876
1877
1878
1879
1880
1881
1882
1883
1884
1885
1886
1887
1888
1889
1890
1891
1892
1893
1894
1895
1896
1897
1898
1899
1900

1901
1902
1903
1904
1905
1906
1907
1908
1909
1910
1911
1912
1913
1914
1915
1916
1917
1918
1919
1920



Coccinella septempunctata Fabr.

J. S. 70



[Faint, illegible text, possibly a species name or description, located below the beetle illustration.]

COCCINELLA *septemnotata*.

Der siebennotirte Marienkäfer.

Coccinella septemnotata: oblonga coleoptris rubris: punctis septem nigris, thoracis margine punctisque duobus albis. *Fabric.* Ent. syst. T. I. n. 43. p. 275

Schneider N. Magaz. III. p. 378.

Illiger Kugelann. Käf. Preuf. I. n. 15. p. 426. var. 1.

Panzer Entom. germ. I. n. 20. p. 137.

Varietas *Cocc. mutab. Schneid.* l. c. aliorumque est, et ad *C. sexpunctatam* demto puncto scutellari, propius accedit.

a Magnitudo naturalis. b Eadem aucta.

1875

1875

[Faint, illegible text, likely bleed-through from the reverse side of the page]



Coccinella ocellata Fabr.

Ed. Sc. fac.

COCCINELLA ocellata.

Der Augen-Marienkäfer. Coccinella à 15 points noirs. Degeer.

Coccinella ocellata: coleoptris luteis: punctis nigris quindecim subocellatis. *Fabric.*

Entom. syst. T. I. n. 64. p. 280. Syst. Ent. n. 27. p. 83. Spec. Inf. T. I. n. 40. p. 100. Mant. Inf. T. I. n. 58. p. 58.

Coccinella ocellata. *Linn.* Syst. Nat. n. 23. p. 582. ed. XIII. n. 23. p. 1654. Faun. Suec. n. 484.

Degeer Inf. T. V. n. 10. p. 431. tab. 11. fig. 1.

Schrank inf. austr. n. 105.

Latchard. tyr. Inf. I. n. 11. p. 129.

Herbst Nat. d. Käf. V. n. 77. p. 319. tab. 57. fig. 9.

Illiger Kugelann Käf. Preuss. I. n. 25. p. 437.

Schäffer Ic. Inf. Ratisb. tab. 1. fig. 2.

Harrer Besch. d. Schäf. Inf. 1. Th. n. 82. p. 85.

Panzer Entom. germ. 1. n. 29. p. 140.

Habitat in Salicibus, floribus etc. haud infrequens. Variat immaculata.

a Magnitudo naturalis. b Eadem aucta.



Cynips megaptera Mihi.



CYNIPS megaptera.

Die großflügelichte Gallwespe.

Cynips megaptera: nigra abdomine ferrugineo postice fuscescente, pedibus pallidis, alis maculis duabus obsoletis fuscis.

Legi in *Angelica sylvestri* L.

Magna in hoc genere. Caput nigrum ore ferrugineo. Antennae longiusculae fuscae articulo primo ferrugineo articulis 15. Thorax ater nitidus margine parum pubescens. Scutellum elevatum obtusum. Alae corpore maiores hyalinae punctatissimae margine postico ciliatae, disco maculis duabus obsoletis fuscis: inferiores immacolatae. Nervorum venarumque divisio earundemque divisio earundemque coniunctio abludit in huius speciei alis adeo, ut nisi reliqua convenirent, vix ad hoc genus retulerim. Pedes pallidi. An *Cyn. Rosar. F.* affinis?

a Magnitudo naturalis. b Eadem aucta,

[The text in this section is extremely faint and illegible due to the quality of the scan. It appears to be a list or a series of entries, possibly containing names and dates.]



Ichneumon vaginatorius Fabr.

J. St. fec.



ICHNEVMON vaginatorius.

Die schwarze gelbausgerandet gebänderte Schlupfwespe.

Ichneumon vaginatorius: scutello albo thorace maculato, abdomine nigro: fasciis quinque albis; tertia interrupta. *Fabric.* Entom. syst. T. I. n. 42. p. 143. Syst. Entom. n. 19. p. 330. *Spec. Inf.* T. I. n. 19. p. 403. *Mant. Inf.* T. I. n. 23. p. 261.

Ichneumon vaginatorius. *Linn.* Syst. Nat. n. 15. p. 932. ed. XIII, n. 15. p. 2680. Fn. Suec. n. 1592.

Rossi Faun. etrusc. T. II. n. 750. p. 38.

Schäffer Ic. Inf. Ratisb. tab. 83. fig. 7.

Legi raro in umbelliferis ad aquarum versuras.

a Magnitudo naturalis. b Eadem aucta.

1871

1871

1871

1871

1871

1871

1871

1871



Ichneumon vaginator. Variet. Fabr.



ICHNEVMON vaginatorius Varietas.^f

Die schwarze gelb ausgerandet gebänderte Schlupfwespe. Abänderung.

Ichneumon vaginatorius. Fabric. Linn. l. l. c. c.

Schäffer Ic Inf. Ratisb. tab. 83. fig. 8.

Convenit hoc specimen cum antecedenti in omnibus, excepto segmento antepenultimo abdominis, quod *bipunctatum* est. An ideo varietas duntaxat transitoria, aut constans sexus sit, haud contendere aulam. Legit eam amicissimus *Flessa* eodem loco, quo postridie genuinam speciem vidi.

a Magnitudo naturalis. b Eadem aucta.

THE UNIVERSITY OF CHICAGO

THE UNIVERSITY OF CHICAGO LIBRARY

1912

1912

1912

1912

1912

1912

1912

1912



Ichneumon nominator Fabr.

J. St. fec.

ICHNEVMON nominator.

Die gelbe schwarzgefleckte Schlupfwespe mit der weissen Makel in den brauen Flügeln.

Ichneumon nominator: luteus nigro maculatus alis fuscis: lunula alba. *Fabric.*
Entom. syst. T. I. n. 93. p. 155.

Legi quotannis in Corylo: aphidophilos.

a Magnitudo naturalis, b Eadem aucta,



Ichneumon deprimator Fabr.

J. St. fec.



ICHNEVMON deprimator.

Die kleine Schlupfwespe mit flachem Uterleibe.

Ichneumon deprimator: ater abdomine depresso plano, pedibus rufis. *Fabric.*
Entom. system. Supplem. p. 227.

Legi saepius in plantis aphidibus infestis.

Alae sunt minime obscurae, sed hyalinae, fascia media subgemina fuscescente. Reliquis convenit. Pedes omnes rufi, femoribus tibiisque posticis apice, tarsisque penitus nigri. Antennae corpore longiores,

a Magnitudo naturalis. b Eadem aucta.



Ichneumon circulator Nihhi.

J. St. fce

ICHNEVMON circulator.

Die gelbbauchigte schwarzgeürtelte Schlupfwespe.

Ichneumon circulator: ater thorace immaculato, abdomine cylindrico rufo, segmento secundo tertio apice nigris, pedibus posticis nigro annulatis.

Legi minus frequens inter Aphides.

Antennae porrectae nigrae basi subtusque flavae. Caput et thorax atra omnino immaculata. Abdomen subcylindricum rufum, segmento primo macula trigona nigra; secundo, tertio apice cingulo nigro; quarto, quinto immaculatis; ultimis nigris: aculeo brevi exserto. Pedes rufi; antici immaculati: femora media et postica apice nigra: tibiae posticae medio et apice, tarsisque omnibus nigro annulatis. Alae obscuro hyalinae.

a Magnitudo naturalis. b Eadem aucta.

1871

...

...

...

...

...

...

...

...

...



Ichneumon nuncupator Mihi.

J. St. fec.



Musca domestica L.

ICHNEVMON nuncupator.

Die rothgelbe Schlupfwespe mit halb schwarzer Brust und Unterleib.

Ichneumon nuncupator: flavescens, thorace scutelloque rufis, abdomine postice capite antennis pedibusque flavis.

Legi raro in umbelliferis.

Caput flavum, vertice, maculaque occipitali nigris. Mandibulae apice fuscae. Oculi nigri. Antennae flavescens. Thorax rufus nitidus sub scutello niger. Scutellum rufum. Abdomen subpetiolatum nitidum ferrugineum, basi nigrum; sub nigredine parum pallescens. Pedes flavi, posticis apice tarsisque annulatis nigris. Aculeus brevis exsertus triplex. Alae hyalinae immaculatae.

a Magnitudo naturalis. b Eadem aucta.

[The text in this section is extremely faint and illegible due to the quality of the scan. It appears to be a multi-paragraph document.]



Ichneumon fasciatus Fabr.



ICHNEVMON fasciatus.

Die flügellose rothe schwarz gebänderte Schlupfwespe.

Ichneumon fasciatus: apertus rufus capite abdominisque fascia nigris. *Fabric.*
Entom. syst. T. I. n. 242. p. 191.

Habitat raro in floribus Syngenesiac.

a Magnitudo naturalis. b Eadem aucta,

1875

The following is a list of the
plants collected by me in
the mountains of the
Andes, during my
excursion in the
month of August.



Chrysis fulgida Fabr.



CHRYSIS fulgida.

Die schimmernde Goldwespe. La Guepe dorée à corcelet vert, et derniers anneaux du ventre epineux. Geoffr.

Chrysis fulgida: glabra nitida, thorace abdominisque primo segmento caeruleis, reliquis aureis, ano quadridentato *Fabric. Entom. syst. T. I. n. 8. p. 240. Spec. Inf. T. I. n. 7. p. 455. Mant. Inf. T. I. n. 7. p. 283.*

Chrysis fulgida. Linn. Syst. Nat. n. 7. p. 948. ed. XIII. n. 7. p. 2746. Faun. Suec. n. 1669.

Geoffr. Inf. T. II. n. 20. p. 382.

Schrank inf. austr. n. 783.

Rossi Faun. etrusc. Mant. n. 292. p. 133.

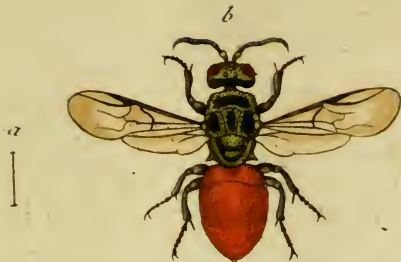
Variat abdomine primo et secundo segmento caeruleis, quod *cl. Rossi* bene observavit.

Nidificat in argillaceis haud infrequens.

a Magnitudo naturalis, b Eadem aucta.

1850

[Faint, illegible handwritten text, likely bleed-through from the reverse side of the page]



Chrysis rufa Mihi.



CHRYSIS rufa.

Die rothbauchigte Goldwespe.

Chrysis rufa: glabra thorace viridi postice bidentato, abdomine rufo ano integro.
Legi rarissime in argillaceis.

Habitus et statura *Chrysidis reginae* F. Caput obscuro viride, fronte foveolata cyanea. Antennae longiusculae nigrae. Thorax antice cyanus postice viridis urrinque argute dentatus. Abdomen minime aureum sed rufum, seu potius obscure ferrugineum, certo situ parum cupreo micans, hinc vel illinc leviter pubescens. Anus omnino integer. Femora cyanea, postica clavata. Tibiae virides. Tarsi fusci. Alae fuscescentes, nervo antico crassiori marginali nigro, venis intermediis pene oblitteratis. Pro *Chryside rosea* Rossi facile habuiffem, nisi abdominis color, huiusque segmentorum inaequalis divisio obstaret.

a Magnitudo naturalis. b Eadem aucta.

INDEX

PLANTAE

Abies ...
Alnus ...
Betula ...
Corylus ...
Fagus ...
Fraxinus ...
Larix ...
Picea ...
Populus ...
Quercus ...
Salix ...
Taxus ...
Ulmus ...
Juniperus ...
Celastrus ...
Cornus ...
Ligustrum ...
Sambucus ...
Viburnum ...
Rosa ...
Spiraea ...
Astragalus ...
Berberis ...
Celastrus ...
Cornus ...
Ligustrum ...
Sambucus ...
Viburnum ...
Rosa ...
Spiraea ...
Astragalus ...
Berberis ...



Agrion Virgo var. x Fabr.

Jac. Sturm fec.



AGRION Virgo.

*Die Flusssnymphe. Die Wasseriungfer. Die Libelle. La Demoiselle.
La Louise. Geoffr.*

Agrion Virgo: alis erectis coloratis. *Fabric.* Entom. syst. T. III. n. 1. p. 386.
Syst. Entom. n. 1. p. 425. *Spec. Inf.* T. I. n. 1. p. 526. *Mant. Inf.* T. I.
n. 1. p. 339.

Libellula Virgo. *Linn.* Syst. Nat. n. 20. p. 904. ed. XIII. n. 20. p. 2626. *Fn.*
Suec. n. 1470.

Libellula Virgo: corpore sericeo nitido: alis luteo fuscis: margine immaculatis.
Linn. Faun. Suec. ed. I. n. 756. α .

Libellula corpore viridi-caeruleo nitida, alis medio caerulescentibus, basi et apice
albis, margine immaculato. *Geoffr.* Inf. T. II. n. 1. p. 221. α .

Rösel Inf. Bel. T. II. tab. 9. fig 7.

Neun und siebenzigstes Heft.

Schrank. inf. austr. n. 600.

Scopoli carn. n. 681. var. 3. ic. 681.

Rossi Faun. etrusc. T. II n. 948. α.

Schaeffer Elem. entom. tab. 78. fig. 1.

— — Ic. Inf. Ratisb. tab. 48. fig. 3.

Frequens ad flavias et ad omnes ubique.



Agrion virgo var. 3 Fabr.

Jac Sturm fec



AGRION Virgo Varietas β .

Die Flusssnymphe. Die Wasseriungfer. Die zweite Abänderung.

Agrion Virgo. Fabric. Linn. 1. 1. c. c.

Libellula Virgo: corpore fericeo nitido, alis viridi caerulefcentibus apice fufcis
margine immaculatis. *Linn. Faun. Suec. ed. I. n 757. β .*

Habitat cum antecedenti frequens ad fluvies.

1870

1870

1870

1870

1870

1870



Lygaeus equestris Fabr.

J. St. fec.



[Faint, illegible text at the bottom of the page, possibly a title or description.]

LYGAEVS equestris.

Die Ritter - Wanze. La Punaise rouge à bandes noires, et taches blanches. Geoffr.

Lygaeus equestris: rubro nigroque maculatus, thorace antice posticeque atro, alis atris albo maculatis. *Fabric.* Entom. syst. T. VI. n. 43. p. 147. Syst. Ent. n. 104. p. 718. Spec. Inf. T. II. n. 142. p. 362. Mant. Inf. T. II. n. 185. p. 298.

Cimex equestris. Linn. Syst. Nat. n. 77. p. 726. ed. XIII. n. 77. p. 2172. Faun. Suec. n. 946. Mus. Lud. Vlr. 177. It. oel. 135.

Geoffr. Inf. T. I. n. 14. p. 442.

Scop. carn. n. 369. ic. 369.

Schrank austr. n. 540.

Poda mus. graec. n. 21. p. 59.

Schäffer Elem. ent. tab. 44. fig. 2.

— — Ic. Inf. Ratisb. tab. 48. fig. 8.

Roffi Faun. etrusc. T. II, n. 1319.

Habitat in montanis editioribus,

a Magnitudo naturalis. b Eadem aucta.



Lygaeus familiaris Fabr.

J. St. fec.

LYGAEVS familiaris.

Die gefellige Wanze.

Lygaeus familiaris: rubro nigroque variis alis fuscis: puncto baseos albo. *Fabric.*
Entom. syst. T. VI. n. 48. p. 149. Spec. Inf. T. II. n. 145. p. 363. Mant.
Inf. T. II. n. 190. p. 298.

Rossi Faun. etrusc. T. II. n. 1518. p. 238.

Legi saepius in montanis asperis. Alarum limbus quoque albus.

a Magnitudo naturalis. b Eadem aucta.

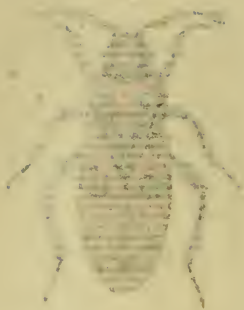
LIST OF CONTENTS

Introduction

1. The first part of the book is devoted to a general survey of the history of the subject, and to a description of the various methods which have been employed for its study. It is here that the reader will find a full and complete account of the progress of the science, and of the contributions of the various nations and individuals who have laboured in its field. The second part of the book is devoted to a detailed description of the various species of the genus, and to a full and complete account of their habits, and of the various uses to which they are put. It is here that the reader will find a full and complete account of the progress of the science, and of the contributions of the various nations and individuals who have laboured in its field.



Lygaeus hispidus Fabr.



LYGAEVS Hyofcyami.

Die Bilsenkraut-Wanze. La Punaise rouge à croix du Chevalier.
Geoffr.

Lygaeus Hyofcyami: rubro nigroque varius alis fuscis immaculatis. *Fabric. Entom.*
syft. T. VI. n. 47. p. 149. Syft. Entom. n. 105. p. 718. Spec. Inf. T. II.
n. 144. p. 362. Mant. Inf. T. II, n. 189. p. 298.

Cimex Hyofcyami. Linn. Syft. Nat. n. 76. p. 726. ed. XIII. n. 76. p. 2169. Fn.
Suéc. n. 945. It. oel. 155.

Geoffr. Inf. T. I. n. 12. p. 441.

Degeer Inf. T. III. n. 18. p. 274. tab. 14. fig. 14. 15.

Schrank. austr. n. 539.

Sulzer Kennz. der Inf. tab. XI. fig. 75.

Rossi Faun. etrusc. T. II. n. 1321. p. 240.

Schaeffer Ic. Inf. Ratisb. tab 13. fig. 2.

Habitat frequens in *Hyofcyamo nigro L. et Nicotiana Tabacum L.*

a Magnitudo naturalis. b Eadem aucta.

1877

The following is a list of the plants
collected by me in the mountains of
the Sierra Nevada, California, during
the summer of 1877. The plants are
arranged in the order in which they
were collected. The names are given
in full, and the local names are
given in parentheses. The number of
specimens of each plant is given in
figures. The names of the collectors
are given in full, and the names of
the collectors are given in parentheses.
The names of the collectors are given
in full, and the names of the collectors
are given in parentheses.



Lygaeus saxatilis Fabr.



LYGAEVS Saxatilis.

Die Stein-Wanze.

Lygaeus saxatilis: niger thoracis margine laterali lineaque media rubris, elytris maculis tribus rubris, elytris maculis tribus rubris, alis immaculatis. *Fabric.*

Entom. syst. T. VI. n. 46. p. 148. Mant. Inf. T. II. n. 188. p. 298.

Cimex saxatilis. Linn. Syst. Nat. n. 81. p. 727. ed. XIII. n. 81. p. 2175.

Scop. carn. n. 371. ic. 371. mala.

Schrank. auftr. n. 538.

Rossi Faun. etrusc. T. II. n. 1317. p. 238.

Schaeffer Ic. Inf. Ratisb. tab. 13. fig. II.

Habitat in rupibus saxosis primo vere.

a Magnitudo naturalis. b Eadem aucta.

1875

Dr. ...

...
...
...
...
...

...
...
...

...

...



Papilio N. Iris Fabr.



PAPILIO Nymphalis Iris.

Der grosse Changeant oder Schillerfalter. Der Bachweidenfalter.

Le grand Mars changeant.

Papilio Nymphalis Iris: alis dentatis fuscis caeruleo micantibus utrinque fascia al-
bida interrupta ocelloque unico: anticis supra coecis. *Fabric. Entom. syst.*
T. IV. n. 339. p. 110. Syst. Entom. n. 248. p. 501. Spec. Inf. T. II. n. 382.
p. 86. Mant. Inf. T. II. n. 460. p. 46.

Papilio Nymphalis gemmatus Iris. Linn. Syst. Nat. n. 161. p. 775. ed. XIII.
n. 161. p. 2307.

Syst. Verz. d. W. Schmelt. n. 1. p. 171.

Scopul. carn. n. 403.

Rösel Inf. Bel. III. tab. 42. fig. 2.

Kleemann Beytr. tab. IX. fig. 3. Chrysal.

Sulzer Kennz. tab. 14. fig. 86.

Schaeffer Ic. Inf. Ratisb. tab. 152, fig. 172.

Esper eur. Schm. T. I. tab. XI. fig. 1. maf. tab. 71. fig. 4. fent.

Borkhausen eur. Schm. I. Th. n. 2. p. 5. et p. 194.

Die Futterpflanze der Raupe dieses Falters, sind fast alle Arten der Weiden, vorzüglich aber liebt sie die wollige Saalweide. Wenn sie sich verwandeln soll, so hängt sie sich nach Art der Doornraupen mit dem Hintertheil ihres Körpers an ein Klümpchen Seide an, und wird zu einer mattgrünen Chrysalide, welche am Kopf zwey und auf der Brust eine scharfe Spitze hat. Nach neun bis vierzehn Tagen entwickelt sich der Falter. Dieser wird in allen warmen Erdstrichen von Europa gefunden. Seine Nahrung sind alle Arten von Feuchtigkeiten. Seine Lieblingsplätze sind Laubwaldungen; besonders gerne hält er sich auf, wo Weiden an sumpfigten Orten stehen, deren ausgeschwitzten Saft er gerne einfaugt. *Borkhausen.*

Den merkwürdigen Farbenwechsel dieses Falters hat *Ledermüller* in seinen *mikroskopischen Augenbel.* I Th. p. 89. tab. 49. sehr vorzüglich erwiesen.



Papilio N. Ilia Fabr.

Jac. Sturm sc.

PAPILIO Nymphalis Ilia.

Der schwarze Changeant. Le Mars. Geoffr. Le petit Mars changeant.

Papilio Nymphalis Ilia: alis dentatis caeruleo micantibus utrinque fascia alba interrupta: omnibus ocello unico. *Fabric. Entom. syst. T. IV. n. 340. p. 110.*
Mant. Inf. T. II. n. 461. p. 46.

Syst. Verz. d. W. Schmett. n. 2. p. 172.

Geoffr. Inf. T. II. n. 29. p. 61.

Esper eur. Schm. 1 Th. tab. 37. fig. 1. mus. tab. 11. fig. 2. fem.

Borkhausen eur. Schm. 1 Th. n. 2. b. p. 8 p. 195.

Flugzeit, Aufenthalt und Lebensart hat dieser Falter mit dem vorhergehenden gemein, doch fliegen beyde Arten nicht miteinander. Es gibt Gegenden, wo die eine Art häufig ist, man aber die andere ganz vermisst. Das Weibchen ist ohne Schiller, übrigens aber vollkommen wie das Männchen gezeichnet.

FACHBEREICH BIOLOGIE

Das folgende Diagramm zeigt die Entwicklung der Artenzahl in den verschiedenen Taxa. Die Y-Achse stellt die Artenzahl dar, die X-Achse die Zeit. Die Kurve zeigt eine deutliche Zunahme der Artenzahl über die Zeit, was auf eine Diversifizierung der Arten hindeutet.

Die Artenzahl in den verschiedenen Taxa ist wie folgt:

- Phylum: 12 Arten
- Classis: 25 Arten
- Ordo: 45 Arten
- Familia: 85 Arten
- Genus: 150 Arten
- Species: 300 Arten

Die Entwicklung der Artenzahl über die Zeit ist in der folgenden Tabelle dargestellt:

| Zeitpunkt | Artenzahl |
|-----------|-----------|
| 1800 | 10 |
| 1850 | 15 |
| 1900 | 25 |
| 1950 | 40 |
| 2000 | 70 |
| 2010 | 100 |

Die Artenzahl in den verschiedenen Taxa ist wie folgt:

- Phylum: 12 Arten
- Classis: 25 Arten
- Ordo: 45 Arten
- Familia: 85 Arten
- Genus: 150 Arten
- Species: 300 Arten

- Tab. 1. *Hister sinuatus* Fabric.
 — 2. *Hister quadrimaculatus* Fabric.
 — 3. *Hister bipustulatus* Schrank.
 — 4. *Hister bimaculatus* Fabric.
 — 5. *Hister fulcatus* Fabric.
 — 6. *Hister depressus* Fabric.
 — 7. *Ichneumon mediatorius* Panzer.
 — 8. *Ichneumon bimaculatorius* Panzer.
 — 9. *Ichneumon notatorius* Panzer.
 — 10. *Ichneumon oratorius* Fabric.
 — 11. *Ichneumon obsoletorius* Fabric.
 — 12. *Ichneumon nugatorius* Fabric.
 — 13. *Ichneumon monitorius* Panzer.
 — 14. *Ichneumon amictorius* Panzer.
 — 15. *Ichneumon calceatorius* Panzer.
 — 16. *Sphex figulus* Fabric.
 — 17. *Pompilus spinosus* Panzer.
 — 18. *Mellinus dissectus* Panzer.
 — 19. *Apis meridiana* Panzer
 — 20. *Apis aprica* Fabric.
 — 21. *Apis liturata* Panzer.
 — 22. *Mutilla nigrita* Panzer.
 — 23. *Hesperia Adonis Mas* Fabric.
 — 24. *Hesperia Adonis Fem.* Fabric.



Hister sinuatus Fabr.

HISTER sinuatus.

Der schwarze Stutzkäfer, mit der rothen Klammer auf den Flügeldecken.

Hister sinuatus: ater elytris macula medja sinuata rufa. *Fabric.* Entom. syst, T. I.
n. 15. p. 75.

Hister director. *Voet.* Coleopt. II. n. 3. p. 46. tab. 31. fig. 3.

Hister lunatus. *Scrib.* Ephem. n. 72. p. 72.

Hister bipustulatus. *Preysl.* Inf. bohém. 8: 76.

Illiger Kugel. *Preufs.* Kät. I. n. 9. p. 57.

Panzer Entom. germ. I. n. 16. p. 23.

Habitat raro in stercore,

1850

...

...

...

...

...

...

...

...

...

...

...



Hister quadrimaculatus Fabr.

HISTER quadrimaculatus.

Der vierfleckigte Stutzkäfer.

Hister quadrimaculatus: ater elytris bimaculatis. *Fabric.* Entom. syst. T. I. n. 18.
p. 76. Syst. Ent. n. 8. p. 53. Spec. Inf. T. I. n. 8. p. 61. Mant. Inf. T. I.
n. 11. p. 33.

Hister quadrinotatus. Illiger Kug. Käf. Preufs. I. n. 10. p. 58.

Scrib. Symb. entom. I. n. 12. p. 47. tab. 5. fig. 5.

Herbst Nat. d. Käf. IV. n. 3. p. 27. tab. 35. fig. 2. B. tab. 36. fig. 12. a. b.

Rossi Faun. Etrusc. I. n. 64. p. 28.

Panzer Ent. germ. I. n. 20. p. 24.

Habitat in stercore.

a Magnitudo naturalis. b Eadem aucta.

PLANTAS DE LA ZONA DE
COSTA RICA

1. *...*
2. *...*
3. *...*
4. *...*
5. *...*
6. *...*
7. *...*
8. *...*
9. *...*
10. *...*
11. *...*
12. *...*
13. *...*
14. *...*
15. *...*
16. *...*
17. *...*
18. *...*
19. *...*
20. *...*
21. *...*
22. *...*
23. *...*
24. *...*
25. *...*
26. *...*
27. *...*
28. *...*
29. *...*
30. *...*
31. *...*
32. *...*
33. *...*
34. *...*
35. *...*
36. *...*
37. *...*
38. *...*
39. *...*
40. *...*
41. *...*
42. *...*
43. *...*
44. *...*
45. *...*
46. *...*
47. *...*
48. *...*
49. *...*
50. *...*
51. *...*
52. *...*
53. *...*
54. *...*
55. *...*
56. *...*
57. *...*
58. *...*
59. *...*
60. *...*
61. *...*
62. *...*
63. *...*
64. *...*
65. *...*
66. *...*
67. *...*
68. *...*
69. *...*
70. *...*
71. *...*
72. *...*
73. *...*
74. *...*
75. *...*
76. *...*
77. *...*
78. *...*
79. *...*
80. *...*
81. *...*
82. *...*
83. *...*
84. *...*
85. *...*
86. *...*
87. *...*
88. *...*
89. *...*
90. *...*
91. *...*
92. *...*
93. *...*
94. *...*
95. *...*
96. *...*
97. *...*
98. *...*
99. *...*
100. *...*



Nister bipustulatus Schrank.



HISTER bipustulatus.

Der zweyblatterigte Stutzkäfer.

Hister bipustulatus: ater: elytro fingulo macula disci rubra. Schrank. Inf. austr.
n. 67. p. 37. eiusd. Faun. boic. I. B. II. p. 451.

Illiger Kugel. Käf. Preuss I. n. 7. p. 35.

Hister fmetarius. Herbst Nat. d. Käf. IV. n. 3. p. 27. tab. 35. fig. 3.

Hister. Voet. Coleopt. II. n. 3. p. 45. tab. 31. fig. 1.

Panzer Entom germ. I. n. 19. p. 23.

Habitat in fimo equino et vaccino.

Schäffer Ic. Inf. Ratisb. tab. 3. fig. 9. mihi equidem non satisfacit, hinc
omisi. Tibiae in hac specie quadridentatae.

a Magnitudo naturalis, b Eadem aucta.



Nister bimaculatus Fabr.

HISTER bimaculatus.

Der zweyfleckichte Stutzkäfer. L'Escarbot à taches rouges. Geoffr.

Hister bimaculatus: ater elytris striatis: macula postica rubra. *Fabric.* Entom. syst. T. I. n. 17. p. 76. Syft. Ent. n. 7. p. 53. Spec. Inf. T. I. n. 7. p. 61. Mart. Inf. T. I. n. 10. p. 33.

Hister bimaculatus. *Linn.* Syft. Nat. n. 5. p. 567. ed. XIII. n. 5. p. 1610. Fn. Suec. n. 442.

Geoffr. Inf. T. I. n. 2. p. 95.

Rossi Fn. Etrusc. T. I. n. 72. p. 32.

Illiger Kugel Käf. Preuf. I. n. 6. p. 54.

Herbst Nat. d. Käf. IV. n. 19. p. 45. tab. 36. fig. 8. a. b.

Panzer Entom. germ. I. n. 17. p. 23.

Habitat in stercore.

a Magnitudo naturalis. b Eadem aucta.

1871

The following is a list of the names of the persons who have been elected to the office of the Secretary of the Society for the year 1871. The names are arranged in alphabetical order.

1. Mr. J. B. Smith
2. Mr. W. D. Jones
3. Mr. T. E. Brown
4. Mr. R. G. White
5. Mr. H. K. Green
6. Mr. F. L. Black
7. Mr. M. N. Gray
8. Mr. P. Q. Red
9. Mr. S. T. Blue
10. Mr. U. V. Yellow

Attest: J. B. Smith, Secretary



Hister sulcatus Fabr.

HISTER fulcatus.

Der gefurchte Stutzkäfer.

Hister fulcatus: ater thorace lineis elevatis quinque, elytris tribus: interstitiis punctatis. *Fabric.* Entom. syst. T. I. n. 12. p. 74.

Hister fulcatus: thorace lineis elevatis quinque, elytris tribus, interstitiis striatis: punctorum serie duplici. *Illiger* Kugel. Käf. Preufs. I. n. 1. p. 51.

Panzer Entom. germ. I. n. 10. p. 21.

Habitat in fungis putrescentibus, quisquiliis.

Pedes omnes in meis speciminibus denticulati, verum subtilissime, et non, nisi armato oculo sic conspicui,

a Magnitudo naturalis, b Eadem aucta,

1881

1882

The following are the names of the persons who have been elected to the office of ...

1881

1882

1883

1884

1885

1886

1887

1888

1889

1890

1891

1892

1893

1894

1895

1896

1897

1898

1899

1900



Hister depressus Fabr.



HISTER depressus.

Der flachgedrückte Stutzkäfer.

Hister depressus: depressus ater nitidissimus, elytris substriatis. *Fabric, Entomol.*

syft. T. I. n. 10. p. 74. Mant. Inf. T. I. n. 8. p. 32.

Herbst Nat. d. Käf. IV. n. 9. p. 34. tab. 35. fig. 9. a. b. J.

Illiger Kugel Käf. Preufs. I. n. 23. p. 64.

Rossi Faun. etrusc. I. n. 68. p. 29.

Panzer Entom. germ. I. n. 9. p. 21.

Habitat sub corticibus Fagi, Quercus, Alni.

a Magnitudo naturalis. b Eadem aucta,

1875

1875

1875

1875

1875

1875

1875

1875

1875

1875

1875



Ichneumon mediatorius Mihi.



ICHNEVMON mediatorius.

Die schwarze rothfüßichte Schlupfwespe, mit zwey Flecken auf dem Unterleib.

Ichneumon mediatorius: scutello flavicante, thorace immaculato, abdomine atro, segmento tertio basi punctis duobus albis.

Habitat Norimbergae. Dn. Sturm.

Habitus et magnitudo *Ichn. fugillator* F. ast omnino distinctus. Caput parvum nigrum subpubescens pone angustatum orbita antice flava. Oculi nigri. Os nigrum palpis pallidis. Antennae atrae annulo medio flavicante. Thorax pubescens ater immaculatus, scutello albo. Abdomen atrum nitidum petiolatum, segmento secundo maiori tertio basi punctis duobus albidis oppositis, reliqua immaculata. Pedes rufi: femoribus tibiisque posticis apice nigris: tarsis posticis solis nigris, excepto articulo primo rufo. Alae subhyalinae flavicantes puncto marginali distincto flavo.

a Magnitudo naturalis. b Eadem aucta.

[The text in this section is extremely faint and illegible due to the quality of the scan. It appears to be a list or a series of entries.]

[Faint text at the bottom of the page, possibly a signature or a date.]



Ichneumon bimaculatōrius Mihi.



ICHNEVMON bimaculatorius.

Die schwarze an der Spitze des Unterleibs gefleckte Schlupfwespe.

Ichneumon bimaculatorius: scutello flavicante, thorace immaculato, abdomine nigro segmentis duobus ultimis macula dorsali alba, pedibus anticis flavis.

Habitat Norimbergae. *Dn. Sturm.*

Habitus et statura *Ichn. molitor. Fabr.* Caput atrum transversum immaculatum. Antennae nigrae annulo medio flavicante, subtus basi rufescentes. Thorax ater opacus pubescens, scutello albo. Abdomen atrum nitidum segmentis ultimis duobus albis. Pedes nigri, antici flavi lineola supra nigricante, Tarsi fusci. Alae hyalinae nervo marginis antici nigro.

a Magnitudo naturalis. b Eadem aucta.

Handwritten title or header text, likely bleed-through from the reverse side of the page.

Main body of handwritten text, consisting of several lines of cursive script. The text is extremely faint and difficult to decipher, appearing to be bleed-through from the reverse side of the page.



Ichneumon notatorius Mili.



ICHNEVMON notatorius.

*Die schwarze gelbbunte Schlupfwespe, mit sechs gelben Flecken
auf dem Unterleib.*

Ichneumon notatorius: scutello lineola, maculisque duabus sub scutello flaviis thorace maculato, abdomine atro, segmentis tribus primis utrinque puncto flavo.

Habitat Norimbergae. Dn. Sturm.

Habitus, statura et magnitudo *Ichn. sugillator. Fabric.* Caput nigrum pubescens, fronte orbitaque oculorum flavis. Labium flavum, puncto utrinque parvo nigro: lineola media in fronte mandibulisque fuscis. Macula fusca in medietate labii. Antennae nigrae, fascia media articuloque primo subtus flavis; subtus ad basin ferrugineae. Thorax ater lineola antica, alia utrinque marginali, puncto ante alas, alioque sub alis lineola sub scutello, maculisque duabus sub lineola flavis. Thorax sub scutello in regione macularum flavarum utrinque subspinosus. Abdomen atrum

Achtzigstes Heft.

glabrum, parum nitidum; segmento primo petiolari apice punctis duobus valde contiguis, secundo et tertio maculis duabus remotioribus flavis. Pedes flavi: femoribus quatuor anticis apice nigris: posticis medio fascia nigra. Alae flavescentes apice hyalinae.

a Magnitudo naturalis. b Eadem aucta.



Ichneumon oratorius Fabr.



ICHNEVMON oratorius.

Die schwarze Schlupfwespe, mit weißgeringeltem Unterleib und Füßen.

Ichneumon oratorius: scutello albo, thorace maculato niger, abdominis segmento primo et secundo margine, septimo toto albis. *Fabric. Entom. Syst. T. III. n. 24. p. 138.*

Habitat Norimbergae. *Dn. Sturm.*

a Magnitudo naturalis. b Eadem aucta.

1870

The
...

...

...



Ichneumon aboletorius Fabr.

ICHNEVMON obsoletorius.

Die schwarze Schlupfwespe, mit rothgeringelten Unterleib und Füßen.

Ichneumon obsoletorius: scutello albo, thorace maculato, abdominis segmento secundo tertioque utrinque macula obsoleta rufa. *Fabric. Entom. syst. T. III. n. 29. p. 140.*

Habitat Norimbergae. *Dn. Sturm.*

Maculae haud raro confluunt in fascias. Pedes in nostro specimine nigri antice totis postice basi rufescentibus. Alae fuscescentes.

a Magnitudo naturalis, b Eadem aucta,

1875

1875

1875

1875

1875

1875

1875

1875



Ichneumon nigratorius Fabr.



ICHNEVMON nugatorius.

Die schwarze Schlupfwespe, mit zwey gelben Bändern.

Ichneumon nugatorius: scutello albo, thorace maculato ater, abdominis segmento secundo tertioque basi flavis. *Fabric.* Entom. System. Supplem. p. 220. Entom. syst. Append. T. VI. p. 455.

Schäffer Ic. Inf. Ratisb. tab. 52. fig. 5. et tab. 233. fig. 5.

Legi raro in umbelliferis.

a Magnitudo naturalis. b Eadem aucta.

[Faint, illegible text, likely bleed-through from the reverse side of the page]



Ichneumon monitorius Mihi.



ICHNEVMON monitorius.

Die schwarze gelbgebänderte und geringelte Schlupfwespe.

Ichneumon monitorius: scutello flavicante; thorace maculato niger, abdominis segmento secundo tertio fascia bascos interrupta, posticis apice flavis.

Habitat Norimbergae. Dn. Sturm.

Habitus et statura *Ichn. notator*. ast distinctus. Caput parvum atrum, orbita antica flava. Os atrum. Palpi rufescentes. Oculi nigri. Antennae nigrae subtus rufae. Thorax ater lineola antica brevi alia utrinque marginali punctoque sub alis flavis. Scutellum flavum. Abdomen atrum nitidum: segmento primo petiolari immaculato, secundo tertio basi fascia medio interrupta flavis: segmenta 2. 3. 4. etiam margine laterali flava: quarto immaculato, quinto, sexto, septimo octavo apice flavo marginatis. Corpus subtus basi flavum punctis quatuor nigris. Pedes flavescences, femoribus anticis basi, posticis medio nigricantibus, Alae inprimis basi flavescences.

a Magnitudo naturalis. b Eadem aucta.

1872

1872

1872

1872



Ichneumon amictorius Mihi.

J. St. fec.



ICHNEVMON amictorius.

Die schwarze gelbgefleckt und geringelte Schlupfwespe.

Ichneumon amictorius: scutello lineolaque sub scutello flavis, thorace maculato niger, abdomine segmento secundo tertio macula dorsali, ultimis margine flavis.

Habitat Norimbergae. *Dn. Sturm.*

Medius. Caput maiusculum atrum pubescens, orbita antica, fronte, labio, palpisque flavis. Antennae nigrae subtus rufescentes. Oculi fuscis. Thorax ater, lineola antica, duobus aliis baseos, puncto sub alis, et alio calloso ante alas, scutello, lineolaque sub scutello flavis. Abdomen subpetiolatum, segmento primo et secundo macula dorsali flavis, tertio quarto immaculatis, reliquis postice flavo marginatis. Tibiae quatuor anticae flavae, posticae apice annulo nigro: femora quatuor postica nigra: tarsis postis fuscis. Alae fuscescentes, apice hyalinae, puncto marginali crassiori subflavo.

a Magnitudo naturalis. b Eadem aucta.

1891

...

...

...

...



Ichneumon calceatorius Mihi.



ICHNEVMON calceatorius.

Die schwarze rothfüßichte Schlupfwespe.

Ichnemon calceatorius: scutello flavicante, thorace immaculato, corpore tarsisque posticis nigris.

Habitat Norimbergae. *Dn. Sturm.*

Statura et habitus *Ichn. pedator. Fabr.* Caput, thorax, abdomen atra immaculata. Scutellum flavum. Abdomen clavatum. Antennae rufae. Pedes omnes rufi, tarsi postici solis nigris. Alae hyalinae, puncto marginali flavescente.

a Magnitudo naturalis. b Eadem aucta.

1877

1877

1877

1877

1877

1877

1877

1877

1877



Sphex figulus Fabr.

J. St. fec.



SPIIEX figulus.

Die Wand - Afterwespe.

Sphex figulus: laevis atra abdomine petiolato, labio segmentorumque marginibus lucidis. *Fabric.* Entom. syst. T. III. n. 19. p. 203. Syst. Ent. n. 6. p. 347. Spec. Inf. T. I. n. 10. p. 444. Mant. Inf. T. I. n. 15. p. 274.

Sphex figulus. *Linn.* Syst. Nat. n. 11. p. 942. ed. XIII. n. 11. p. 2727. Faun. Suec. n. 1630.

Larva habitat in parietum ligneorum foraminibus, ab aliorum insectorum larvis factis relictisque: imago frequentat flores umbelliferos.

a Magnitudo naturalis. - b Eadem aucta.

REVISED NUMBER

Die Wälder - Österreich

Die Wälder Österreichs sind in ihrer Zusammensetzung und in ihrer Ausdehnung im Vergleich mit den Wäldern anderer Länder ein sehr interessantes und wichtiges Kapitel der österreichischen Naturgeschichte. Die Wälder Österreichs sind in ihrer Zusammensetzung und in ihrer Ausdehnung im Vergleich mit den Wäldern anderer Länder ein sehr interessantes und wichtiges Kapitel der österreichischen Naturgeschichte.

Die Wälder Österreichs sind in ihrer Zusammensetzung und in ihrer Ausdehnung im Vergleich mit den Wäldern anderer Länder ein sehr interessantes und wichtiges Kapitel der österreichischen Naturgeschichte.



Pompilus spinosus Mihi.

J. St. fec.



POMPILVS spinosus.

Die stachlichte Grabwespe.

Pompilus spinosus: niger abdomine utrinque puncto albo: basi rufo apice nigro, femoribus posticis apice spinosis.

Legi in Carduis: raro.

Affinis *Spb. fuscus*. et *bimaculatus*. En LI. 3. 4. quibuscum proprium genus constituere videtur. Caput nigrum. Oculi magni tuscis: linea inter oculos utrinque, labio, mandibulisque flavis, his apice tuscis. Papi tuscis apice flavis. Antennae nigrae, articulo primo longiori subtus flavo. Thorax ater immaculatus, scutello lineola flava. Alae albo-hyalinae, anticis ante apicem fascia nigricante. Abdomen nitidum apice parum pubescens, puncto medio utrinque albo: basi rufum, apice nigrum. Pedes flavis: femoribus anticis et posticis apice nigris, his apice spinosis: tibiis mediis et posticis basi flavis apice nigris.

a Magnitudo naturalis. b Eadem aucta.

Achtzigstes Heft.

THE HISTORY OF THE
CITY OF BOSTON

The first landing of the Pilgrims in the year 1620 was at Cape Cod, where they remained for a few days before proceeding to the site of the present city. The Pilgrims were a group of English Separatists who had fled from the religious persecution of the Church of England in search of a place where they could worship God according to their own consciences. They arrived in North America on the ship the Mayflower, and their journey was a long and arduous one. The Pilgrims were joined by other settlers, and together they founded the town of Plymouth. The Pilgrims were a hardy and determined group, and they were able to survive the first winter in North America. The Pilgrims were a group of English Separatists who had fled from the religious persecution of the Church of England in search of a place where they could worship God according to their own consciences. They arrived in North America on the ship the Mayflower, and their journey was a long and arduous one. The Pilgrims were joined by other settlers, and together they founded the town of Plymouth. The Pilgrims were a hardy and determined group, and they were able to survive the first winter in North America.



Mellinus diffectus Mihi.

J. St. fec.

MELLINVS (dissectus).

Die abgebrochen gebänderte Viperwespe.

Mellinus dissectus; thorace maculato, abdomine taeniis transversis omnibus interruptis flavis.

Habitat in floribus. Misit Dn. *Funk*.

An satis diversa a *Crabrone trimacul. Rossi* (Faun. Inf. Germ. LI 13) sit, nequidem ipse affirmare haud ausim. Interim, ob diversam faciem, habitumque (sic mihi visum) alienum, huc tamen inferere placuit insectum, ne pereat saltem notatu digna huius varietas.

a Magnitudo naturalis. b Eadem aucta.

1875

1875

1875

1875

1875

1875

1875

1875

1875

1875



Apis meridiana Mihi.

J. St. fec.



APIS meridiana.

Die Sonnen-Hummel. Die Mittagbiene.

Apis meridiana: thorace rufo atra, ano albo, alis obscure fuscis.

Legi mens. Augusto in collibus apricis 1800.

Habitus et statura *A. agror.* F. est plus quam duplo maior et distinctissima. Caput atrum immaculatum. Os pilis rufis barbatum. Antennae certo situ cinereo micantes nigrae. Thorax rufus antice niger. Abdomen atrum. Anus albus. Subtus corpus omnino nigrum. Alae obscure fuscae s nigricantes, imprimis apice. Pedes nigri, tarsi uti antennae, certo situ cinereo micantes.

1875

1875

1875

1875

1875



Apis aprica Fabr.

J. St. f.

APIS aprica.

Die lappländische Sonnenhummel. Die lappländische Mittagbiene.

Apis aprica: hirsuta atra thorace fulvo, ano albo. *Fabric. Entom. system. Suppl.*
p. 273.

Legi fero autumno in sylvaticis 1800.

Ap. agror. F., magis autem *anteced.* similis, sed omnino distincta. Ab *anteced.* differt magnitudine triplo minori, alis obscure lutescentibus, nec obscure fuscis: thorace pallidiori rufo: tarsis rufescentibus: ore atro, anoque albidiori et acuminato.

[Faint, illegible text, likely bleed-through from the reverse side of the page]



Apis liturata Mihi.



APIS liturata.

Die Characterbiene.

Apis liturata: nigra thorace immaculato, abdomine lituris utrinque sex transversis albidis, ano integro.

Legi primo vere in sylvaticis 1800.

Caput transversum atrum pubescens. Frons densius albedo pubescens, punctis duobus sub antennis oppositis flavis. Mandibulae nigrae. Antennae breves nigrae, subtus apice rufescentes. Oculi nigri, in cadavere cinereo maculati. Macula suborbitalis utrinque flava. Thorax omnino immaculatus, margine laterali utrinque albedo pubescens, punctoque ante alas calloso subflavo. Alae obscuro hyalinae. Abdomen atrum punctatum, subnudum, utrinque lituris transversis remotis sex albidis: liturae in ultimo abdominis segmento, potius puncta, quam lituras mentiuntur. Pedes omnes flavi pubescentes. Abdomen subtus leviter albedo pubescens.

Leviter hanc Apem intuenti, *varietas* saltem *Ap. maculatae* F. videri posset: curatius autem cum utraque instituto examine, hand amplius nemo dubitabit, utramque, quamvis sibi adeo similem speciem, tamen magnis inter se utique differre notis momentisque. Abludit enim nostra, ab *Ape maculata* Fabric. praesertim 1) *fronte*, minus maculata, punctisque salis duobus, insigne. 2) *thorace* nunquam maculato: 3) *abdomine* lituris, non *flavis*, sed *albidis*, seu ex *albido* *lutescentibus*: earundemque *figura*, *situ*, *proportione* et *nexu*: 4) *abdomine* *subtus* hand lanato, sed leviter duntaxat *pubescenti*: 5) *pedibus* omnibus *flavis*, minusque *villosis*.

a Magnitudo naturalis. b Eadem aucta.



Mutilla nigrita Mihi.

J. St. fec.



MVTILLA nigrita.

Die ganz schwarze weißlicht gebänderte Mutille.

Mutilla nigrita: hirta nigra, abdomine segmentis posticis margine albido ciliatis; alis apice nigricantibus.

Legi media aestate inter muscos frondosos. 1800.

Media. Tota nigra immaculata hirta, folis segmentis abdominis posticis margine albido ciliatis. Alae obscurae, apice nigricantes.

a Magnitudo naturalis. b Eadem aucta.

[Faint, illegible text, likely bleed-through from the reverse side of the page]



Hesperia R. Adonis Mas Fabr.

J. St. fec.



HESPERIA ruralis Adonis Mas.

Der Adonis. L'Argus bleu celeste. Das Männchen.

Hesperia ruralis Adonis: alis integris caeruleis: strige marginali atra, subtus cinereis: punctis ocellaribus numerosis, posticis macula centrali alba. *Fabric.*

Entom. syst. T. IV. n. 134. p. 299. Mant. Inf. T. II. n. 694. p. 75.

Papilio Adonis. Verz. d. W. Schm. n. 11. p. 184.

Papilio Alexis. Verz. d. W. Schm. n. 12. p. 184.

Papilio Bellargus. Esper. eur. Schm. T. II. tab. 32. fig. 3.

Papilio Bellargus. Borkhausen eur. Schm. I. n. 6. p. 157. et n. 6. p. 277.

Das Männchen dieses Falters hat unter allen dieser Horde, das schönste Himmelblau, von einem wahren saphirenen Glanz, in einer solchen Höhe, daß es das Auge blendet. Es erscheint im Junius, man findet es aber auch noch im August und September. Sein Aufenthalt sind Gärten, umzäunte Wiesen, und gräfliche Wälder.

THE UNIVERSITY OF CHICAGO
LIBRARY

THE UNIVERSITY OF CHICAGO
LIBRARY
1100 EAST 58TH STREET
CHICAGO, ILL. 60637
TEL: 773-936-3200
WWW.CHICAGO.EDU



Hesperia R. Adonis Fem. Fabr.

HESPERIA ruralis Adonis Femina.

Der Adonis. L'Argus bleu celeste. Das Weibchen.

Hesperia ruralis Adonis: Fabric. l. l. c. c.

Lebt und wohnt bey seinem Männchen.

1872

...

...

- Tab. 1. *Carabus coriaceus* Fabric.
 — 2. *Carabus cyaneus* Fabric.
 — 3. *Carabus arvensis* Fabric.
 — 4. *Carabus auratus* Fabric.
 — 5. *Carabus morbillosus* Fabric.
 — 6. *Carabus granulatus* Fabric.
 — 7. *Carabus Sycophanta* Fabric.
 — 8. *Carabus Inquisitor* Fabric.
 — 9. *Carabus reticulatus* Fabric.
 — 10. *Tenthredo ustulata* Fabric.
 — 11. *Tenthredo haematopus* Mas. Panzer.
 — 12. *Tenthredo haematopus* Fem Panzer.
 — 13. *Ictheumon pedicularius* Fabric.
 — 14. *Tiphia cenoptera* Panzer.
 — 15. *Pompilus tumidus* Panzer.
 — 16. *Vespa uorwegica* Fabric.
 — 17. *Vespa auca* Fabric.
 — 18. *Vespa zonalis* Panzer.
 — 19. *Apis caespidium* Panzer.
 — 20. *Apis haematoda* Panzer.
 — 21. *Apis aestivalis* Panzer.
 — 22. *Pyralis Scopoliiana* Fabric.
 — 23. *Pyralis Mitterbachiana* Fabric.
 — 24. *Tinea compositella* Fabric.



Carabus coriaceus Fabr.

J. St. fée.



CARABUS coriaceus.

Der schwarze chagrinierte Laufkäfer. Der lederartige Laufkäfer.
Le Bupreste noir chagriné. Geoffr.

Carabus coriaceus: apterus ater opaeus elytris connatis: punctis intricatis subrugosis. *Fabric.* Entom. syst. T. I. n. 3. p. 125. Syst. Ent. n. 1. p. 235. Spec. Inf. T. I. n. 2. p. 298. Maut. Inf. T. I. n. 3. p. 195.

Carabus coriaceus. *Linn.* Syst. Nat. n. 1. p. 668. ed. XIII. n. 1. p. 1960.

Buprestis ater elytris rugosis. *Geoffr.* Inf. T. I. n. 1. p. 141.

Paykull Faun. Suec. I. n. 1. p. 98.

— *Mon. Carab.* n. 1. p. 9.

Rossi Faun. etrusc. I. n. 305. p. 236. ed. *Hellw.*

Illiger Kugel Käf. Preuss. I. n. 6. p. 145.

Buprestis punctulatus. *Voet.* Coleopt. II, n. 43. p. 88. tab. 38. fig. 43.

Ein und Achtzigstes Heft.

Schäffer Ic. Inf. Ratisb. tab. 141. fig. 1.

Harrer Besch. d. Schäf. Inf. I. n. 191. p. 127.

Panzer Entom. germ. I. n. 1. p. 44.

Habitat in hortis et in pomariis, locis udis et ad fossas, haud infrequens.

Morbosa atque singularis antennae dexteri lateris, huius speciminis degeneratio, quae mihi in vivo individuo obvenit, in tabula nostra seorsim et lente aucta fistitur.



Carabus cyanus Fabr.

J. St. fec.



CARABUS cyaneus.

Der ganz dunkelblaue Laufkäfer, mit verwickelten Streifen auf den Flügeldecken.

Carabus cyaneus: apterus niger violaceo nitens, elytris punctis intricatis rugosis.

Fabric. Entom. syst. T. I. n. 9. p. 126. Gen. Inf. Mantiss. p. 239. Spec.

Inf. T. I. n. 4. p. 299. Mantiss. Inf. T. I. n. 7. p. 195.

Carabus intricatus. Linn. Faunc. Suec. n. 780. Syst. Nat. ed. XIII. n. 60. p. 1964

Paykull Faun. Suec. I. n. 2. p. 99.

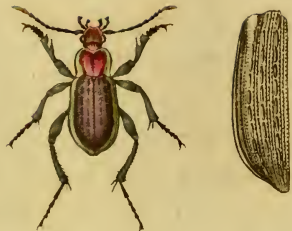
— Mon. Carab. n. 2. p. 10.

Illiger Kugel. Käf. Preus. I. n. 7. p. 145.

Buprestis violaceus. Voet. Coleopt. II. n. 30. p. 80. tab. 37. fig. 30.

Panzer Entom. germ. I. n. 6. p. 45.

Habitat in sylvaticis editioribus, et sub lapidibus.



Carabus arvensis Fabr.

1850

1850

CARABUS arvensis.

Der Feld - Laufkäfer.

Carabus arvensis: apterus nigro cupreus elytris striatis: punctis *elevatis* (excavatis) triplici serie. *Fabr.* Entom. system. I. n. 17. p. 128. Mant. Inf. T. I. n. 18. p. 196.

Poykull Faun. Suec. I. n. 10. p. 105.

— Mon. Carab. n. 10. p. 21.

Illiger Kugel. Käf. Preuss. I. n. 16. p. 153.

Panzer Entom. germ. I. n. 13. p. 46.

Habitat in putridis et sub lapidibus.

a Magnitudo naturalis. b Elytrum lente auctum.

Handwritten text, possibly a title or header, mostly illegible due to blurriness.

Handwritten text, possibly a list or table of contents, mostly illegible.

Handwritten text, possibly a list or table of contents, mostly illegible.

Handwritten text, possibly a list or table of contents, mostly illegible.



Carabus auratus Fabr.



CARABUS auratus.

Der goldene Laufkäfer. Le Bupreste doré et sillonné à larges bandes.
Geoffr.

Carabus auratus: apterus elytris auratis sulcatis, antennis pedibusque rufis. *Fabric.*
Entom. syst. T. I n. 235 p. 129. Syst. Ent. n. 12. p. 238. Spec. Inf. T. I.
n. 15. p. 301. Mant. Inf. T. I. n. 23. p. 197.

Carabus auratus. *Linn.*: Syst. Nat. n. 7. p. 668. ed. XIII. n. 7. p. 1963. Faun.
Suec. n. 780.

Geoffr. Inf. T. I. n. 2. p. 142. tab. 2 fig. 5.

Degeer Inf. T. IV. n. 1. p. 64. tab. 17. fig. 20.

Paykull. Faun. Suec. I. n. 11. p. 105.

— Mon. Carab. n. 11. p. 23.

Illiger Kugel. Käf. Preuf. I. n. 20. p. 156.

Buprestis nitens. Voet. Coleopt. II. n. 29. p. 80. tab. 36. fig. 29.

Schaeffer Ic. Inf. Ratisb. tab. 202. fig. 5.

Harrer Besch. d. Schäff. Inf. I. Th. n. 195. p. 123.

Panzer Entom. germ. I. n. I. n. 15. p. 47.

Habitat in hortis, arvis, sub lapidibus,



Carabus morbillosus Fabr.

J. St. fec.



CARABUS morbillosus.

Der kupferröthlichte rauhgefurchte Laufkäfer.

Carabus morbillosus: apterus thorace cupreo, elytris striatis cupreis: sulcis scabris punctisque elevatis longitudinalibus. *Fabric.* Entom. syst. T. I. n. 26. p. 130.

Habitat in Austria.

Aegre mihi ac ne vix eruenda quum sit illa Carabi species, cuius mentionem, sub *morbillofi* nomine, fecit Cl. Illigerus (*Kugel. Käf. Preuss. I. p. 153*); hinc quaevis, quae ibidem proposuit synonyma, huc repetere nolim.

[Faint, illegible title text]

[Faint, illegible text line]

[Faint, illegible text block]

[Faint, illegible text line]

[Faint, illegible text block]



Carabus granulatus Fabr.

J. St. jce.



CARABUS *granulatus*.

Der körnerichte Laufkäfer.

Carabus granulatus: apterus nigricans, elytris aeneis striatis, interiectis punctis elevatis longitudinalibus. *Fabric.* Entom. syst. T. I. n. 28. p. 130 Syst. Ent. n. 14 p. 238. Spec. Inf. T. I. n. 17. p. 301. Mant. Inf. T. I. n. 25. p. 197.

Carabus granulatus. *Paykull.* Faun. Suec. I. n. 9. p. 104.

— — — — *Eiusd.* Mon. Carab. n. 9 p. 19.

Carabus cancellatus. *Illiger* Kug. Käf. Preuf. I. n. 18. p. 154.

Carabus elathratus. *Scrib.* Synb. ent. I. 12. 6. tab. 1. fig. 6.

Schaeffer Ic. Inf. Ratisb. tab. 156. fig. 4.

Rossi Faun. etrusc. Mant. n. 173. p. 73.

Panzer Entom. germ. I. n. 18. p. 47.

Habitat in arvis, hortis, pomariis, sylvis; hybernans sub corticibus arborum.

1890

1891

1892

1893

1894

1895

1896

1897

1898

1899

1900

1901

1902

1903

1904

1905

1906

1907

1908

1909

1910

1911

1912

1913

1914

1915

1916

1917

1918

1919

1920

1921

1922

1923

1924

1925

1926

1927

1928

1929

1930

1931

1932

1933

1934

1935

1936

1937

1938

1939

1940

1941

1942

1943

1944

1945

1946

1947

1948

1949

1950

1951

1952

1953

1954

1955

1956

1957

1958

1959

1960

1961

1962

1963

1964

1965

1966

1967

1968

1969

1970

1971

1972

1973

1974

1975

1976

1977

1978

1979

1980

1981

1982

1983

1984

1985

1986

1987

1988

1989

1990

1991

1992

1993

1994

1995

1996

1997

1998

1999

2000

2001

2002

2003

2004

2005

2006

2007

2008

2009

2010

2011

2012

2013

2014

2015

2016

2017

2018

2019

2020

2021

2022

2023

2024

2025

2026

2027

2028

2029

2030

2031

2032

2033

2034

2035

2036

2037

2038

2039

2040

2041

2042

2043

2044

2045

2046

2047

2048

2049

2050

2051

2052

2053

2054

2055

2056

2057

2058

2059

2060

2061

2062

2063

2064

2065

2066

2067

2068

2069

2070

2071

2072

2073

2074

2075

2076

2077

2078

2079

2080

2081

2082

2083

2084

2085

2086

2087

2088

2089

2090

2091

2092

2093

2094

2095

2096

2097

2098

2099

2100

1890

1891

1892

1893

1894

1895

1896

1897

1898

1899

1900

1901

1902

1903

1904

1905

1906

1907

1908

1909

1910

1911

1912

1913

1914

1915

1916

1917

1918

1919

1920

1921

1922

1923

1924

1925

1926

1927

1928

1929

1930

1931

1932

1933

1934

1935

1936

1937

1938

1939

1940

1941

1942

1943

1944

1945

1946

1947

1948

1949

1950

1951

1952

1953

1954

1955

1956

1957

1958

1959

1960

1961

1962

1963

1964

1965

1966

1967

1968

1969

1970

1971

1972

1973

1974

1975

1976

1977

1978

1979

1980

1981

1982

1983

1984

1985

1986

1987

1988

1989

1990

1991

1992

1993

1994

1995

1996

1997

1998

1999

2000

2001

2002

2003

2004

2005

2006

2007

2008

2009

2010

2011

2012

2013

2014

2015

2016

2017

2018

2019

2020

2021

2022

2023

2024

2025

2026

2027

2028

2029

2030

2031

2032

2033

2034

2035

2036

2037

2038

2039

2040

2041

2042

2043

2044

2045

2046

2047

2048

2049

2050

2051

2052

2053

2054

2055

2056

2057

2058

2059

2060

2061

2062

2063

2064

2065

2066

2067

2068

2069

2070

2071

2072

2073

2074

2075

2076

2077

2078

2079

2080

2081

2082

2083

2084

2085

2086

2087

2088

2089

2090

2091

2092

2093

2094

2095

2096

2097

2098

2099

2100



Carabus Sycophanta Fabr.

Jac. Sturm. fec.



[Faint, illegible text or markings at the bottom of the page]

CARABUS Sycophanta:

Der Puppenräuber. Le Bupreste quarré couleur d'or. Geoffr.

Carabus Sycophanta: alatus violaceo nitens, elytris striatis aureis. *Fabric. Entom. syst. T. I. n. 103. p. 149. Syst. Ent. n. 20. p. 239. Spec. Inf. T. I. n. 25. p. 303. Mant. Inf. T. I.*

Carabus Sycophanta. Linn. Syst. Nat. n. 12. p. 679. ed. XIII. n. 12. p. 1966. Fn. Suec. n. 790.

Geoffr. Inf. T. I. n. 5. p. 144?

Paykull. Faun. Suec. T. I. n. 39. p. 127.

— *Mon. Carab. n. 38. p. 63.*

Illiger Kugel. Kaf. Preus. I. n. 1. p. 141.

Sulzer abgek. Gesch. d. Inf. p. 62. tab. 7. fig. 1.

Scop. carn. n. 262. absque icone.

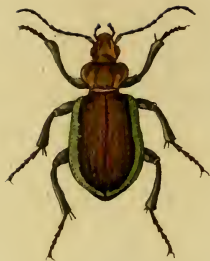
Schaeffer Ic. Inf. Ratisb. tab. 66. fig. 6.

Harrer Besch. d. Schöff. Inf. 1. Th. n. 198. p. 126. !

B. prestis Sycophanta. *Voet*. Coleopt. II. n. 32, p. 82. tab. 37. fig. 32.

Panzer Entom. germ. I. n. 49. p. 54.

Habitat in sylvaticis, hortis, pomariis.



Carabus inquisitor Fabr.



CARABUS Inquisitor.

Der Raupenläger. Le Bupreste quarré couleur de bronze antique. Geoffr.

Carabus inquisitor : alatus elytris striatis viridi aeneis : punctis triplici ordine. *Fabric.* Entom. syst. T. I. n. 199. p. 149. Syst. Ent. n. 18. p. 239. Spec. Inf. T. I. n. 23. p. 303. Mant. Inf. T. I. n. 31. p. 197.

Carabus inquisitor. *Linn.* Syst. Nat. n. 11. p. 669. ed. XIII. n. 11. p. 1965. Faun. Suec. n. 789.

Geoffr. Inf. T. I. n. 6. p. 145.

Paykull Faun. Suec. n. 40. p. 127.

— *Mon. Carab.* n. 39. p. 65.

Illiger Kugel. Käf. Preuss. I. n. 2. p. 142.

Buprestis sycophanta minor. *Voet.* Coleopt. II. n. 39. p. 86. tab. 38. fig. 39.

Panzer Entom. germ. I. n. 50. p. 54.

Habitat in sylvaticis, in hortis sub lapidibus.

1872

[Faint, illegible handwritten text, likely bleed-through from the reverse side of the page]



Carabus reticulatus Fabr.

J. St. fec.



[CARABUS reticulatus.

Der auf den Flügeldecken netzartig gezeichnete Laufkäfer.

Carabus reticulatus: alatus niger elytris reticulatis viridi aeneis, thoracis margine
virescente (?) *Fabric.* Entom. syst. T. I. n. 111. p. 150. Mant. Inf. T. I.
n. 33. p. 197.

Paykull Faun. Suec. I. n. 41. p. 128.

— *Mon. Carab.* n. 40. p. 67.

Illiger Kug. Käf. Preuß. I. n. 5. p. 145.

Panzer Entom. germ. I. n. 51. p. 54.

Habitat in sylvaticis, ad aquas sub lapidibus.

Ein und Achtzigstes Heft.

1875

The first of the following...

...

...

...

...

...

...

...

...



Tenthredo uytulata Fabr.

TENTIIREDO *ustulata*.

Die stahlblaue Blatwespe mit weissen Füßen, und dem braunen Flecken in den Vorderflügeln. Mouche à Scie bleue à iambes noires. Degeer.

Tentredo ustulata: antennis clavato-filiformibus exarticulatis, corpore nigro abdomine caerulescente, tibiis pallidis. *Fabric. Ent. syst. T. III, n. 12. p. 108. Syst. Ent. n. 13. p. 922. Spec. Inf. T. I. n. 11. p. 407. Mant. Inf. T. I. n. 11. p. 253.*

Tentredo ustulata. Linn. Syst. Nat. n. 13. p. 922. ed. XIII, n. 13. p. 2656. Fa. Suec. n. 1542.

Degeer. Inf. T. II. p. 2. n. 27. p. 277. tab. 39. fig. 19. 20.

Rossi Faun. etrusc. II. n. 705. p. 22.

Habitat raro apud nos in floribus.

Quae iam sub eodem nomine in *Faun. XXXIX. 12.* depicta fuit *Tentredo* non alia quaevis esse videtur, nisi *Tentbr. enodis* varietas.

a Magnitudo naturalis. b Eadem aucta.

[The text on this page is extremely faint and illegible. It appears to be a handwritten document, possibly a list or a set of notes, with several lines of text visible but not readable.]



Tenthredo haematopus Mas Niki.

J. St. fec.



TENTHREDO haematopus, Mas.

Die schwarze Blatwespe, mit rothen Hinterfüßen. Das Männchen.

Tenthredo haematopus: antennis septemnodiiis nigra, abdomine segmentis sexto septimoque utrinque macula alba, pedibus posticis sanguineis.

Habitat Norimbergae. Dn. *Ssurm.*

Magritudo et statura *Tenthr. carbonar.* F. Caput nigrum nitidulum. Labium flavum. Palpi exserti pallidi. Thorax, scutellum atra immaculata: puncta duo sub scutello elevata albida. Abdomen cylindricum atrum nitidum: segmentis sexto septimoque margine laterali utrinque macula alba. Alae obscuro fuscae, seu subferrugineae, margine antico lineolaque nigris. Pedes flavescentes: posticis sanguineis: tarsis nigris.

a Magnitudo naturalis. b Eadem aucta.

THE HISTORY OF THE

PLANT KINGDOM

AS FAR AS THE KNOWLEDGE OF THE

PRESENT STATE OF THE

ART IS CONCERNED

BY

JOHN RAY, D.D.

OF BRISTOL

LONDON

1704

Printed by J. Sturges, at the



Tenthredo haematopus Fem. Mihi.



TENTHREDO haematopus. Femina.

Die schwarze Blatwespe, mit den rothen Hinterfüssen. Das Weibchen.

Tenthredo haematopus: antennis septemnodiiis nigra: abdomine segmentis sexto septimoque utrinque macula alba: pedibus posticis sanguineis:

Habitat cum mare. Dn. *Sturm.*

Convenit in omnibus cum mare, exceptis folis pedibus anticis mediisque quoque sanguineis, sed pallidioribus.

a Magnitudo naturalis. b Eadem aucta.



Ichneumon pedicularius Fabr.



ICHNEUMON pedicularius.

*Die kleine rothe ungeflügelte Schlupfwespe, mit schwarzen Kopf,
und schwarzer Brust- und Bauchspize.*

Ichneumon pedicularius: apterus rufus, capite thoracis abdominisque postico nigris.
Fabric. Ent. syst. T. III. n. 244. p. 192.

Habitat Norimbergae. *Dn. Sturm.*

Pedes postici apice nigricantes.

a Magnitudo naturalis. b Eadem aucta.

PROCEEDINGS

of the ...

...

...

...

...



Tiphia cenoptera Müh.

J. St. fec



TIPHIA cenoptera.

Die kleine schwarze Rauhwespe, mit fast aderlosen Flügeln.

Tiphia cenoptera: atra laevis nitida, pedibus fuscis, alis opacis subaveniis.

Habitat Norimbergae. Dn. Sturm.

Habitus et statura *Tipb. hemipter.* Faun. LXXVII. 14. et omnino huius generis. Corpus totum atrum laeve nitidum. Antennae basi fuscescentes. Pedes fusci: femora subclavata. Abdomen ovatum pedicellatum. Alae maxime singulares, primo intuitu absque venis nervisque opacae subfuscae; ast omnino adsunt venae ad exortum alar. auticar. sitae, quamvis paucae, breves, exiles.

a Magnitudo naturalis. b Eadem aucta,

PLANT

The following list of plants is taken from the

herbarium of the University of Cambridge

and is published for the first time

in this volume. It is intended to be a
check-list of the plants which have been
collected in the region of the
Cambridge University Herbarium
since the year 1800. The list is
arranged in alphabetical order of the
names of the plants, and is divided
into two parts, the first containing
the names of the plants which have
been collected in the region of the
Cambridge University Herbarium
since the year 1800, and the second
containing the names of the plants
which have been collected in the
region of the Cambridge University
Herbarium since the year 1800.

A list of the names of the plants



Pompilus tumidus Mihi.

J. St. fec.



POMPILUS tumidus.

Die aufgedunsene Grabwespe.

Pompilus tumidus: niger abdomine rufo apice nigro, lunulis duabus pone medium, maculaque anali albis.

Habitat Norimbergae. Dn. Sturm.

Habitus, statura *Pomp. spinos.* Faun. LXXX. 17. quocum, aliisque proprium genus constituere videtur. Caput obscurum, vertice cano, fronte nigra: lineola utrinque ante oculos, aliaque ante labium argenteo villosis. Oculi fuscis. Antennae nigrae, articulo primo subtus albo. Thorax ater immaculatus griseo pubescens. Scutellum puncto albo. Abdomen subpedicellatum elongatum nitidum segmentis tumidis: basi rufum, apice nigrum, lunulis duabus pone medium maculaque ante apicem albis. Pedes quatuor antici ferruginei, posticis tarsisque fuscis. Aiae breves obscurae s. subfuscae.

a Magnitudo naturalis. b Eadem aucta.

THE HISTORY OF THE

ROYAL SOCIETY OF LONDON

FROM THE FOUNDATION OF THE SOCIETY IN 1660 TO THE PRESENT TIME

BY JOHN HENRY MADDISON

IN TWO VOLUMES. VOL. II.

THE HISTORY OF THE ROYAL SOCIETY OF LONDON FROM THE FOUNDATION OF THE SOCIETY IN 1660 TO THE PRESENT TIME. BY JOHN HENRY MADDISON. IN TWO VOLUMES. VOL. II. THE HISTORY OF THE ROYAL SOCIETY OF LONDON FROM THE FOUNDATION OF THE SOCIETY IN 1660 TO THE PRESENT TIME. BY JOHN HENRY MADDISON. IN TWO VOLUMES. VOL. II.

LONDON: PRINTED BY RICHARD CLAY AND COMPANY, LTD., BUNGAY, SUFFOLK.

1931



Vespa norvegica Fabr.

Jac. Sturm fec.



VESPA norwegica.

Die norwegische Vesppe.

Vespa norwegica: thorace utrinque lineola, scutello immaculato, abdominis segmentis margine flavis; secundo utrinque macula rufa. *Fabric* Entom. syst. T. III. n. 16. p. 258. *Spec. Inf.* T. I. n. 32. p. 460. *Mant. Inf.* T. I. n. 13. p. 288.

Ruri degit, haud infrequens.

Corpus pubescens. Alae pedesque flavi. Flavedo marginalis segmentorum abdominis denticulata.

a Magnitudo naturalis. b Eadem aucta.

1878

Die ...

Die ...
Die ...
Die ...

Die ...
Die ...
Die ...



Vespa cructa Fabr.

J. St. fec.



VESPA aucta.

Die Haaken - Wespe.

Vespa aucta: nigra thorace maculato, scutello punctis duobus lineolaque transversa, abdominis fasciis sex flavis: prima utrinque reflexa, *Fabric. Entom. syst. T. III. n. 69. p. 272.*

Legi frequens ad pagos et in pratis.

Vespa Dantici Rossi Fn. etrusc. II. n. 876. p. 89. tab. 6. fig. 6. nullo modo huc pertinet, quae *flava* prorsusque aliis signaturis insignis.

Variat haec species cum magnitudine, tum scutelli pictura, tum abdominis apice spinoso et mutico. Alae plerumque apice nigricantes. Descriptio illustr. *Fabric. optima, totaque cadit in nostram.*

a Magnitudo naturalis. b Eadem aucta.

- 1787A -

1787A - 1787B - 1787C

1787A - 1787B - 1787C

1787A - 1787B

1787A - 1787B

1787A - 1787B - 1787C

1787A - 1787B - 1787C

1787A - 1787B - 1787C

1787A - 1787B - 1787C

1787A - 1787B - 1787C

1787A - 1787B - 1787C

1787A

1787A - 1787B - 1787C



Vespa zonalis Michx.



VESPA zonalis.

Die einfach gegürtelte Pillenwespe.

Vespa zonalis: nigra, thorace immaculato, abdominis petiolo apice, segmento secundo fascia simplici flavis.

Habitat Norimbergae. Dn. Sturm.

Habitus et statura *Vesp. coarct. pomiform.* F, sed omnino distincta. Caput atrum pubescens nitidum immaculatum. Labium apice macula longitudinali flava. Mandibulae atrae, basi puncto flavo. Palpi obscuro pallidi. Antennae nigrae immaculatae. Thorax, scutellum atra nitida, pube tenui tecta. Abdominis primum segmentum infundibuliforme atrum pubescens, apice fascia angusta flava: secundum campaniforme maximum nigrum fascia media simplici flava: reliqua brevissima immaculata. Pedes nigri: tibiis anticis extus lineola flava. Alae plicatae obscuro fuscae, margine crassiori venisque intermediis atris.

a Magnitudo naturalis. b Eadem aucta.

1898

Die Pflanzenwelt der Gegend

Die Gegend ist eine sehr fruchtbare Ebene, die von einem breiten Fluß durchzogen ist. Die Vegetation ist sehr mannigfaltig und besteht aus verschiedenen Arten von Pflanzen. In der Nähe des Flußes sind vorwiegend Weiden und Pappeln zu finden, während in den weiter entfernten Teilen der Gegend vorwiegend Getreide und andere Kulturpflanzen angebaut werden. Die Gegend ist auch reich an Wildpflanzen, die für die Tierwelt von großer Bedeutung sind. Die Flora der Gegend ist sehr artenreich und spiegelt die verschiedenen Lebensbedingungen der Gegend wider.



Apis caespitum Mihi.

APIS caespitum.

Die Rasen Hummel. Die Rasen Biene.

Apis caespitum: hirsuta atra: thorace citrino medio nigro: abdomine albo antice citrino.

Legit in caespitosis *amiciff.* *Flessa* eamque benevole mecum communicavit.

Caput atrum, fronte citrina Mandibulae nigrae. Oculi fusci. Antennae nigrae. Thorax citrinus, seu virescenti griseus, medio niger. Abdomen ultra medium album, antice citrinum s. virescente-griseum. Pedes fusci. Alae obscuro hyalinae. Corpus subtus pallide virescenti-griseum.

ARTS SECTION

THE EAST INDIA COMPANY

The East India Company, which was established in 1600, was a joint stock company that was granted a royal charter by James I. It was the first of a series of companies that were established to trade with the East Indies.

The company was established to trade with the East Indies, and it was the first of a series of companies that were established to trade with the East Indies. The company was established to trade with the East Indies, and it was the first of a series of companies that were established to trade with the East Indies.



Apis haematoda Mihi.

APIS haematoda.

Die schwarze kugelbauchigte Biene, mit schwarzen gezähnelten After.

Apis haematoda: pubescens atra, fronte alba, abdomine nigro apice rufo, segmento ultimo dentato.

Legi primo vere in *Salicæ triandra* Linn. 1800.

Habitus et statura *Ap. rufae* Fabric. Caput punctis confertis atrum: fronte cinerea: vertice nigro calvo. Oculi cineri, Antennae longiusculae atrae. Thorax ater cinereo pilosus, inprimis margine laterali. Abdomen globosum atrum cinereo pubescens, segmentis ultimis ruto villosis, ultimo crenato-denticulato. Alae obscuro hyalinae, nervo antico crassiori nigro.

a Magnitudo naturalis. b Eadem aucta. c Abdominis segmentum ultimum crenato-denticulatum.

1878

The following is a list of the plants
collected by me during my visit to
the island of St. Helena in the year
1878.

The first part of the list contains
the names of the plants which were
collected by me during my visit to
the island of St. Helena in the year
1878. The second part of the list
contains the names of the plants which
were collected by me during my visit to
the island of St. Helena in the year
1878.

The third part of the list contains
the names of the plants which were
collected by me during my visit to
the island of St. Helena in the year
1878.



Apis aestivalis Mihi.

APIS aestivalis.

Die schwarze breitbauchigte Sommerbiene.

Apis aestivalis: cinereo pubescens atra, abdomine segmentis latere cinerascentibus, pedibus posticis subtus cinereo villosis.

Legi musitantem in gramine: media aestate a. 1800.

Habitus et statura *Ap. tuberculat.* F. Caput atrum fronte cinereo pilosa. Antennae nigrae. Oculi glauci. Thorax dorso ater, antice margine laterali utrinque et postice cinereo pubescens. Abdomen ovatum depresso atrum dorso subnudum, incisuris margine laterali piloso albicantibus. Pedes nigri pilosi tibiis posticis subtus lana densa cinerea villosis. Alae albae hyalinae nervo antico marginali nigro.

a Magnitudo naturalis, b Eadem aucta,

1875

1875

1875

1875

1875

1875



Pyralis Scopoliiana Fabr.

J.St.fec.



PYRALIS Scopoliana.

Die Scopolische Schabe.

Pyralis Scopoliana: alis fuscis: arcubus duobus dorsalibus albis. *Fabric. Entom.*
syft. T. V. n. 162. p. 281. Mant. Inf. T. II n. 123. p. 238.

Phalena Scopoliana. Syst. Verz. d. W. Schm. n. 11. p. 129.

Arcus dorsales in alis superioribus non semper continui, sed plerumque ex quatuor vel quinque maculis argenteis compositi, quae plus vel minus contiguae.

Habitat in Austria.

a Magnitudo naturalis. b Eadem aucta.

PLANTAE

PLANTAE

PLANTAE

PLANTAE

PLANTAE

PLANTAE

PLANTAE

PLANTAE

PLANTAE



Pyralis Mitterbachiana Fabr.

J. St. fec.



[Faint, illegible handwritten text]

PYRALIS Mitterbachiana:

Die Mitterbachensche Schabe.

Pyralis Mitterbachiana: alis fusco rufoque variis: striga dorsali abbreviata alba.

Fabric. Ent. syst. T. V. n. 170. p. 284. Mant. Inf. T. II. n. 130. p. 239.

Phalaena Mitterbachiana. Syst. Verz. d. W. Schm. n. 17.

Habitat in Austria.

a Magnitudo naturalis. b Eadem aucta.

THE UNIVERSITY OF CHICAGO

THE UNIVERSITY OF CHICAGO

THE UNIVERSITY OF CHICAGO
THE UNIVERSITY OF CHICAGO
THE UNIVERSITY OF CHICAGO

THE UNIVERSITY OF CHICAGO

THE UNIVERSITY OF CHICAGO



Tinea compositella Fabr.

J. St. fec.

TINEA compositella.

Die braunflügelichte Motte, mit dem zusammengesetzten Silberfleck.

Tinea compositella: alis fuscis: macula dorsali communi argentea e strigis quatuor composita. *Fabric.* Entom. syst. T. V. n. 129. p. 316. Syst. Ent. n. 46. p. 663. Spec. Inf. T. II. n. 62. p. 300. Mant. Inf. T. II. n. 99. p. 250.

Habitat in sylvaticis.

a Magnitudo naturalis. b Eadem aucta.

TITEL

Die ...

...

...

- Tab. 1. *Cerambyx Heros* Fabric.
— 2. *Cerambyx Cerdo* Fabric.
— 3. *Rhagium mordax* Fabric.
— 4. *Rhagium inquisitor* Fabric.
— 5. *Rhagium indagator* Fabric.
— 6. *Callidium pufillum* Fabric. †
— 7. *Callidium plebeium* Fabric.
— 8. *Callidium massiliense* Fabric.
— 9. *Callidium mysticum* Fabric.
— 10. *Tenthredo lucida* Panzer.
— 11. *Tenthredo pedestris* Panzer.
— 12. *Tenthredo togata*. Panzer.
— 13. *Tenthredo fulviconis* Fabric.
— 14. *Syrphus versicolor* Fabric.
— 15. *Syrphus aeneus* Fabric.
— 16. *Syrphus tristis* Fabric.
— 17. *Syrphus coemiteriorum* Fabric.
— 18. *Syrphus Ocymi* Fabric.
— 19. *Syrphus nectareus* Fabric.
— 20. *Syrphus canicularis* Panzer.
— 21. *Mulio mutabilis* Fabric.
— 22. *Sphinx Pinastri* Fabric.
— 23. *Phalaena Piniaria Mas.* Fabric.
— 24. *Phalaena Piniaria Fem.* Fabric.

[Faint, illegible handwritten text, likely bleed-through from the reverse side of the page]

[Faint, illegible handwritten text, likely bleed-through from the reverse side of the page]



Cerambyx Heros Fabr.

Jac. Sturm fec.



CERAMBYX Heros.

*Der groſe ſchwarzbraune Bockkäfer. Der deutſche Held. Le grand
Capricorne noir. Geoffr.*

Cerambyx Heros: thorace ſpinoſo rugoſo niger, elytris ſubſpinoſis piceis, anten-
nis longis. *Fabric.* Entom. ſyſt. T. II. n. 15. p. 255. *Syſt. Ent.* n. 14.
p. 167. *var. min.* *Spec. Inf.* T. I. n. 18. p. 212. *var. maj.* *Mant. Inf.*
T. I. n. 22. p. 132.

Cerambyx Cerdo. *Linn.* *Syſt. Nat.* n. 39. p. 629. ed. XIII. n. 39. p. 1826.

Le grand Capricorne noir. Geoffr. *Inf.* T. I. n. 1. p. 200.

Cerambyx Heros. *Scop carn.* n. 163. ic. 163.

Bergſträſſer *Nomencl.* I. n. 8. tab. I. fig. 10. tab. II. fig. 4. 5.

Friſch *Inf.* XIII. p. 14. tab. I. fig. 8. tab. II. fig. 11.

Drury *Inf. exot.* I. p. 147. tab. 39. fig. 1. *edit. noſtr.*

Zwey und Achtzigſtes Heft.

Voet. Coleopt. II. n. 9. p. 15. tab. 5. fig. 9. edit. nostr.

Laichard. Inf. tyr. II. n. 1. p. 6.

Schäffer Ic. Inf. Ratisb. tab. 124. fig. 3.

Harrer Besch. d. Schöff. Inf. 1. Th. n. 318. p. 195.

Rossi Faun. etrusc. I. n. 358. p. 141.

Panzer Entom. germ. I. n. 3. p. 247.

Habitat in sylvis; in Quercu, Salice.



Cerambyx Cerdo Fabr.

• J. St. fce.



CERAMBYX Cerdo.

Der kleine ganz schwarze Bockkäfer, Le petit Capricorne noir. Geoffr.

Cerambyx Cerdo: thorace spinoso rugoso niger, elytris rotundatis, antennis longis. *Fabric.* Entom. syst. T. II, n. 14. p. 255. *Syst. Entom.* n. 14. p. 157. *Spec. Inf.* T. I. n. 18. p. 212. *Mant. Inf.* T. I. n. 21. p. 132.

Cerambyx Cerdo. *Linn.* *Syst. Nat.* n. 39. p. 629. *var. min.* ed. XIII, n. 39. p. 1826.

Geoffr. *Inf.* T. I. n. 2. p. 201.

Cerambyx Cerdo. *Scop.* *carn.* n. 162. ic. 162.

Cerambyx Scopoli. *Laiehard.* *tyr.* *Inf.* II. n. 2. p. 8.

Schaeffer *Ic.* *Inf.* *Ratisb.* tab. 14. fig. 8.

Harrer *Beschr. d. Schäff.* *Inf.* I. Th. n. 319. p. 196.

Voet *Coleopt.* II. n. 5. p. 13. tab. 4. fig. 5.

Rossi *Faun. etrusc.* I. n. 357. p. 140.

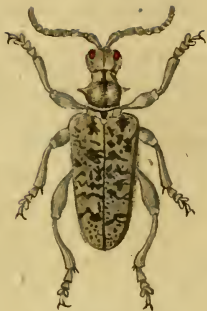
Panzer *Entom.* *germ.* I. n. 2. p. 247.

Habitat in sylvis, raro frequentat etiam flores.

THE [illegible]

[The following text is extremely faint and illegible due to the quality of the scan. It appears to be a list or a series of entries.]

[This section contains several lines of text, also illegible due to fading. It appears to be a continuation of the list or entries from the previous section.]



Rhagium mordax Fabr.

J. St. fec.



RHAGIUM mordax.

Der beifige Zangenbock. Le Stencore noir velouté de jaune. Geoffr.

Rhagium mordax: thorace spinoso griseum, elytris nebulosis testaceo-subfasciatis.

Fabric. Ent. syst. T. II. n. 1. p. 303. *Spec. Inf.* T. I. n. 1. p. 219 (*Var.*

Rhag. inquis.) *Mant. Inf.* T. I. n. 1. p. 145.

Cerambyx Inquisitor. *Linn.* Syst. Nat. n. 49. p. 631. var. β . ed. XIII. n. 241.

p. 1845. *Faun. Suec.* I. n. 486. II. n. 659. var. β .

Geoffr. *Inf.* T. I. n. 2. p. 223.

Schaeffer *Ic. Inf. Ratisb.* tab. 8. fig. 2.

Harrer *Beschr. d. Schäff. Inf.* 1. Th. n. 331. p. 203.

Herbst *Archiv.* V. n. 2. p. 92. tab. 25. fig. 14.

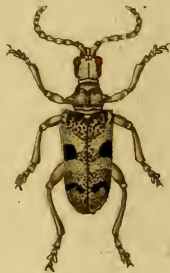
Voet. *Coleopt.* II. n. 1. p. 2. tab. 25. fig. I.

Panzer *Entom. germ.* I. n. 1. p. 254.

Habitat in sylvaticis umbrosis.

PLANTAS

The following list of plants is taken from the
herbarium of the University of Cambridge
and is intended to show the names of the
plants which have been introduced from
the East Indies to Europe. The list is
given in the order in which the plants
were introduced, and is arranged in
alphabetical order of the names of the
plants as they are given in the list.



Rhagium Inquisitor Fabr.



RHAGIVM Inquisitor.

Der Schleicher. Der Aufpaffer.

Rhagium Inquisitor: thorace spinoso nigrum, elytris nebulosis testaceo subfasciatis.

Fabric. Entom. syst. T. II. n. 2. p. 304. Syst. Ent. n. 48. p. 182. Spec.

Inf. T. I. n. 1. p. 229. α). Mant. Inf. T. I. n. 2. p. 145.

Cerambyx Inquisitor. Linn. Syst. Nat. n. 49. p. 630. ed. XIII. n. 49. p. 1845.

Fn. Suec. n. 659.

Schäffer Ic. Inf. Ratisb. tab. 2. fig. 10. *valde mala.*

Harrer Besch. d. Schöff. Inf. n. 332. p. 203.

Degeer Inf. T. V. n. 2. p. 126. tab. 4. fig. 6. (*non 1.*)

Panzer Ent. germ. I. n. 2. p. 254.

Habitat in sylvaticis, et in truncis Pinus sylvestris.



Rhagium Indagator Fabr.



R H A G I V M Indagator.

Der Stänkerer.

Rhagium Indagator: thorace spinoso cinereum, elytris lineis tribus elevatis: atomis fasciisque duabus nigris. *Fabric.* Entom. syst. T. II. n. 3. p. 304. Mant. Inf. T. I. n. 3. p. 145.

Degeer Inf. T. V. n. 2. p. 302. tab. 4. fig. 7.

Frisch Inf. 13. tab. 14.

Voet Coleopt. II. n. II. p. 4. tab. 25. fig. II.

Panzer Entom. germ. I. n. 3. p. 255.

Habitat haud infrequens in sylvaticis: legi saepius in hybernaculo suo sub cortice *Pinu sylvestris* L.

THE HISTORY OF THE

PLANT KINGDOM

BY JOHN VAUGHAN, M.D. F.R.S. &c.

IN THREE VOLUMES.

LONDON, Printed by J. BARNARD, in Pall-mal, 1747.

Price 3s. 6d.



Callidium pusillum Fabr.

CALLIDIUM pusillum.

Der Zwerg-Lichtkäfer.

Callidium pusillum: thorace rotundato nigrum, antennis tibiisque testaceis, *Fabric.*

Entom. syst. T. II. n. 53. p. 330.

Panzer Entom. germ. I. n. 21. p. 264.

Habitat in ligno antiquo.

Cl. Schneiderus hanc *Callidii* speciem, primum cum illustri *Fabricio* deinde quoque *mecum* benevole communicavit, inde pictura mea, secundum idem hoc exemplum facile effici poterat. Atqui, cum et illustr. *Fabricii*, et *meum* exemplum, ab eodem *Cl. Viro*, huius speciei eximio inventore profectum fuerit, vix ullum ideo dubium superest, quin *me* veram hanc hic delineasse speciem.

In Sect. LXVI, 10. *Faunae* etc. *Callidium Vini*, ut ut nova abs me descripta et depicta extat species, quam *Cl. Creutzer* in *Versuche* etc. n. 2. p. 136.

pro *Callidio pusillo* Fabric. agnoscit. Inde liquet, Cl. auctorem *der Versuche*
etc. omnino halucinasse, perperamque utramque diversam ideo speciem, vix sibi
satis superque notam, non bene commutasse in unam.

a Magnitudo naturalis. b Eadem aucta.



Callidium plebeium Fabr.

CALLIDIVM plebeium.

Der plebeische Listkäfer. Der Leichen-Widderkäfer. Der Lambda-Holzkäfer. La Lepture à raies blanches. Geoffr.

Callidium plebeium: thorace globoso immaculato, elytris nigris: strigis tribus punctoque humerali albis. *Fabric. Ent. syst. T. II. n. 67. p. 334. Syst Ent. n. 28. p. 193. Spec. Inf. T. I. n. 37. p. 243. Mant. Inf. T. I. n. 52. p. 156.*

Leptura rustica. Linn. Syst. Nat. n. 17. p. 639? ed. XIII. n. 281. p. 1853. Fn. Suec. n. 692.

Geoffr. Inf. T. I. n. 12. p. 215.

Cerambyx figuratus. Scop. carn. n. 176: ic. 176.

Clytus funebris. Laicharding inf. tyrol. II. n. 8. p. 111.

Leptura figurata. Schrank. inf. austr. n. 306.

Lepturm lambda. Eiusd. Beytr. n. 13. p. 67. tab. 3. fig. 13.

Rossi Faun. etrusc. I. n. 395. p. 159.

Schaeffer Ic. Inf. Ratisb. tab. 2. fig. 7.

Harrer Besch. d. Schöff. Inf. I. n. 355. p. 215.

Voet Coleopt. II. n. 94. p. 56. tab. 19. fig. 94.

Panzer Entom. germ. I. n. 30. p. 266.

Habitat in ligno exeso: passim imago in floribus:

a Magnitudo naturalis. b Eadem aucta.



Callidium massiliense Fabr.



CALLIDIVM massiliense.

Der Marseillsche Listkäfer.

Callidium massiliense: thorace globofo immaculato, elytris nigris: strigis tribus albis anteriore incurva. *Fabric.* Ent. syst. T. II. n. 68. p. 334.

Leptura massiliensis. *Linn.* Syst. Nat. Add. n. 8. p. 1067. ed. XIII. n. 65. p. 1876.

Panzer Entom. germ. I. n. 31. p. 266.

Habitat in floribus imago non raro.

Citat. b. à *Linné* et *Geoffr.* apud. ill. *Fabric.* delenda.

a Magnitudo naturalis. b Eadem aucta.

1871

1871

1871

1871

1871

1871



Callidium mysticum Fabr.

J. Stöck.
fec.

CALLIDIUM mysticum.

*Der hieroglyphische Listkäfer. Der viel bedeutende Widderkäfer.
La Lepture arlequine. Geoffr.*

Callidium mysticum: thorace rotundato, elytris fuscis: fasciis apiceque cinereis basi rufis. *Fabric.* Entom. syst. T. II. n. 81. p. 337. Syst. Ent. n. 34. p. 194. Spec. Inf. T. I. n. 45. p. 244. Mant. Inf. T. I. n. 61. p. 156.

Leptura mystica. Linn. Syst. Nat. n. 18. p. 639. ed. XIII. n. 290. p. 1855. Faun. Suec. n. 693.

Geoffr. Inf. T. I. n. 15. p. 217.

Scop. carn. n. 177. ic. 177.

Schrank. austr. n. 303.

Laichard. tyr. II. n. 7. p. 107.

Schaeffer Ic. Inf. Ratisb. tab. 2. fig. 9.

Harrer Besch. d. Schäff. Inf. I. n. 358. p. 317.

Voet Coleopt. II. n. 8. p. 7. tab. 26. fig. 3.

Panzer Entom. germ. I. n. 36. p. 267.

Habitat in floribus hortorum, pratorum.

a Magnitudo naturalis, b Eadem aucta.

Zwey und Achtzigstes Heft.

CONSTITUTION

The first section of the constitution...

The second section of the constitution...

The third section of the constitution...

The fourth section of the constitution...

The fifth section of the constitution...

The sixth section of the constitution...

The seventh section of the constitution...

The eighth section of the constitution...

The ninth section of the constitution...

The tenth section of the constitution...

The eleventh section of the constitution...



Tenthredo lucida Mihi.

TENTHREDO lucida.

Die glänzende Blattwespe.

Tenthredo lucida: antennis septemnodiiis, corpore atro nitido, thorace utrinque macula triangulari, abdomine basi maculis quatuor, pedibusque rufis.

Nematus Iurine. Legi in Chaerophyllo hirsuto L. 1800.

Habitus et statura *Tentb. gonagra* F. Caput atrum.

Os palpique flava. Antennae septemarticulatae nigrae utrinque ciliatae, longitudine fere corporis. Thorax ater nitidus antice utrinque macula triangulari rufa. Abdomen elongatum atrum nitidum, basi sub scutello maculis quatuor distinctus rufis. Pedes omnes rufi: tarsis posticis solis atris. Alae hyalinae, margine antico fusco, punctoque marginali nigro.

a Magnitudo naturalis, b Eadem aucta.

THE
MUSEUM OF
COMPARATIVE ZOOLOGY

THE
MUSEUM OF
COMPARATIVE ZOOLOGY

THE
MUSEUM OF
COMPARATIVE ZOOLOGY

THE
MUSEUM OF
COMPARATIVE ZOOLOGY



Tenthredo pedestris Michx.

J. St. fec.



TENTHREDO pedestris.

Die Blattwespe mit rothen Vorderfüßen.

Tentredo pedestris: antennis septemnodiiis, rufa capite thoracis basi et apice, pedibusque posticis nigris.

Dolerus Iurine.

Legi in Angelica sylvestri L. 1800.

Habitus et statura *Tentbr. germanic. Fab.* sed facies aliena. Caput os antennae nigra. Thorax rufus. Scutellum atrum. Abdomen rufum nitidum basi apiceque atrum. Pectus atrum. Alae obscurae nervis nigricantibus. Pedes nigri, anticis nigricantibus.

a Magnitudo naturalis. b Eadem aucta.

THE HISTORY OF THE

PLANT KINGDOM

BY
J. G. BURTON
F.R.S.

IN TWO VOLUMES.
VOL. I.

LONDON:
PRINTED BY RICHARD CLAY AND COMPANY, LTD.,
BUNGAY, SUFFOLK.

1926.



Tenthredo togata Fabr.

TENTHREDO togata.

Die schwarze milchweis gebänderte Blattwespe.

Tenthredo togata: antennis septemnodiiis atra, abdomine fasciis duabus apiceque candidis.

Tenthredo togata. Fabric. inedit.

Allantus Iurine.

Legi saepius in dumetis.

Caput atrum nitidum, postice maculis duabus oppositis albis. Antennae ad medietatem usque nigrae, demum flavae. Thorax ater nitidus, punctis duobus callofis ante alas albis. Abdomen atrum cylindricum nitidum, basi fascia alba, segmento quarto postice punctis utrinque longitudinalibus duabus albis, quae fasciam angustam interruptam mentiuntur: segmento quinto apiceque albis. Pedes nigri, tibiis albo fasciatis, tarsisque flavicantibus. Alae apice fuscescentes,

a Magnitudo naturalis, b Eadem aucta.

[Faint, illegible title text]

[Faint, illegible text line]

[Faint, illegible text block]

[Faint, illegible text block]

[Faint, illegible text line]



Penthredo fulvicornis Fabr.

TENTHREDO fulvicornis.

Die kleine schwarze Blattwespe mit rothgelben Fühlhörnern.

Tenthredo fulvicornis: antennis septemnodis atra, antennis pedibusque anoque flavis.

Tenthredo fulvicornis. Fabric. inedit.

Dolerus Irvine.

Legi passim in Chaerophyllis. 1800,

Parva. Caput atrum. Os flavum, mandibulis apice fuscis. Antennae flavae. Thorax ater immaculatus, punctis duobus ante alas callosis flavis. Abdomen cylindricum atrum nitidulum, ano rufo. Pedes omnes flavi. Alae subhyalinae puncto marginali flavo.

a Magnitudo naturalis. b Eadem aucta.

THE ...

...

...

...

...

...

...

...

...



Syrphus versicolor Fabr.



Musca domestica

SYRPHVS *versicolor*.

Die buntgezeichnete Schwebefliege.

Syrphus versicolor : antennis fetariis tomentosus thorace sublineato, abdomine rufescente; dorso nigro cinereo vario. *Fabric.* Ent. syst. T. VI, n. 19. p. 283.

Legi raro in pratis. 1801.

Vidi duplo maiorem signaturis iisdem, vix satis distinctam.

a Magnitudo naturalis. b Eadem aucta.

1850 - 1855

1856 - 1860

1861 - 1865

1866 - 1870

1871 - 1875

1876 - 1880



Syrphus aeneus Fabr.



SYRPIVS aeneus.

Die metallglänzende Schwebefliege.

Syrphus aeneus: antennis setariis subtomentosus nigro aeneus nitidulus genubus albis. *Fabric. Ent. syst. T. VI. n. 88. p. 302.*

Habitat haud infrequens in pratis et hortis.

a Magnitudo naturalis. b Eadem aucta.

Handwritten text, likely a title or header, mostly illegible due to fading.

Handwritten text, likely a subtitle or introductory line, mostly illegible.

Main body of handwritten text, consisting of several lines of script that are largely illegible due to fading and blurring.



Syrphus tristis Fabr.



SYRPHVS tristis.

Die miszfärbige Schwebestiege.

Syrphus tristis: antennis setariis nudiusculus thorace nigro pallide lineato abdomine aeneo nitidulo. *Fabric*, Entom. syst. T. VI, n. 92. p. 303.

Habitat non raro in floribus.

a Magnitudo naturalis. b Eadem aucta.

1871

1871

1871

1871

1871

1871



Syrphus coeniteriorum Fabr.



SYRPHVS coemiteriorum.

Die schwarzviolette Schwebefliege.

Syrphus coemiteriorum: antennis setariis nigro aeneus, abdomine depresso atro nitido, alis nigricantibus. *Fabric.* Ent. syst. T. VI. n. 94. p. 303. *Manu.* Inf. T. II. n. 59. p. 339.

Musca coemiteriorum. *Linn.* Syst. Nat. n. 82. p. 992. ed. XIII. n. 82. p. 2878. *Fn. Suec.* n. 1842.

Habitat in floribus non raro.

a Magnitudo naturalis. b Eadem aucta.

[The text in this section is extremely faint and illegible, appearing to be a list or index of items.]



Syrphus Ocyami Fabr.



SYRPHVS Ocymi.

Die Basilicum Schwebefliege.

Syrphus Ocymi: antennis setariis atro aeneus nitidus, abdomine rufo, basi apiceque aeneo. *Fabric.* Entom. syst. T. VI, n. 114. p. 309.

Habitat in hortis: raro.

a Magnitudo naturalis. b Eadem aucta.

[Faint, illegible text, likely bleed-through from the reverse side of the page]



Syrphus nectaricus Fabr.



SYRPHVS nectareus.

Die linirte Schwebefliege. La Mouche à bandes jaunes alternativement plus larges sur le ventre. Geoffr.

Syrphus nectareus: antennis setariis tomentosus abdomine flavo: segmentorum marginibus nigris: fascia flava. *Fabric. Entom. syst. T. VI. n. 116. p. 309.*

Geoffr. Inf. T. II. n. 40. p. 514.

Habitat in plantis ambrosiacis,

a Magnitudo naturalis. b Eadem aucta.



Syrphus canicularis Miki.

SYRPHVS canicularis.

Die Hundstag - Schwebefliege.

Syrphus canicularis: antennis setariis tomentosus, thorace obscuro aeneo subnudo, abdomine fulvo tomentoso.

Legi in editoribus sub canicula 1800.

Caput atrum nitidum parum pubescens. Antennae flavae seta nigricante nuda. Vertex pubescens. Thorax scutellumque nigro aenea, lateribus inprimis subtomentosa: dorso subnudo. Abdomen aeneum nitidum e pilis fulvis tomentosum. Pedes flavi: femora medio nigra. Alae subflavo hyalinae.

a Magnitudo naturalis. b Eadem aucta.



Mulio mutabilis Fabr.



MVLIO mutabilis.

Die schillernde Schwebefliege.

Mulio mutabilis: tomentosus thorace immaculato, abdomine nigro griseoque mutabili. *Fabric.* Ent. syst. Supplem. n. 3. p. 559.

Syrphus mutabilis. *Fabric.* Entom. syst. T. VI. n. 59. p. 294. Syst. Ent. n. 24. p. 767. Spec. Inf. T. II. n. 33. p. 428. Mant. Inf. T. II. n. 39. p. 338.

Musca mutabilis. *Linn.* Syst. Nat. n. 40. p. 985. ed. XIII. n. 40. p. 2872. Faun. Suec. n. 1807.

Habitat in editioribus: in pratis raro.

a Magnitudo naturalis. b Eadem aucta.

PLATE 1

PLATE 1

PLATE 1

PLATE 1

PLATE 1



Sphinx Pinastri Fabr.



Pieris ...

SPHINX Pinaetri.

*Der Föhrenschwärmer. Der Fichtenschwärmer. Der Tannenspeil.
Papillon bourdon du Pin. Degeer.*

Sphinx Pinaetri: alis integris canis: anticis lineolis tribus confertis nigris, abdomine fusco: cingulis albis. *Fabric.* Entom. syst. T. IV. n. 35. p. 367. Syst. Entom. n. 16. p. 541. *Spec. Inf.* T. II. n. 30. p. 146. *Mant. Inf.* T. II. n. 33. p. 95.

Sphinx Pinaetri. *Linn.* Syst. Nat. n. 22. p. 802. ed. XIII. n. 22. p. 2385. *Fn.* Suec. n. 1088.

Syst. Verz. d. W. Schm. n. 3. p. 41.

Degeer Inf. T. II. P. I. n. 1. p. 234.

Scop. carn. n. 473. ic. 473.

Schäffer Ic. Inf. Ratisb. tab. 110. fig. I. 2.

Scop Nederl, Inf. III. p. 23, tab. 5.

Drury Inf. I. tab. 27. fig. 2.

Rösel Inf. Bel. I. tab. 6.

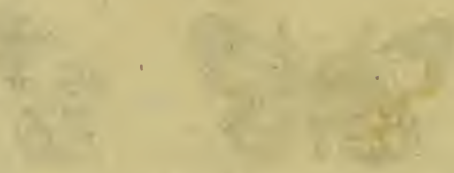
Esper eur. Schm. II. tab. 12.

Borkbauf. eur. Schm. I. n. 4. p. 101.

Die einzige Futterpflanze dieser Raupe, ist die *Fobre* (*Pinus sylvestris* Linn.) wenigstens hat man sie noch auf keiner ähnlichen Species dieser Nadelholzgattung gefunden. Wenn sie sich verwandeln will, so gräbt sie sich in die Erde, aber nicht tief, oft verbirgt sie sich unter das Moos, und meistens auf der Winterseite des Baums. Der Schwärmer entwickelt sich erst im folgenden Frühling, zu Ende Mai und Anfang Junius. Manche Jahre ist er häufig, manche aber auch sehr selten.



Phalaena piniaria Mas & Fabr.



PHALAENA Piniaria Mas.

Der Fichtenspanner. Der Föhrenspanner. Das Männchen. Phalene panachée à raye blanche. Degeer.

Pbalaena piniaria: pectinicornis alis fuscis flavo maculatis subtus nebulosis: fasciis duabus fuscis. *Fabric.* Ent. syst. T. V. n. 45. p. 141. *Syst.* Ent. n. 23. p. 624. *Spec. Inf.* T. II. n. 31. p. 247. *Mant. Inf.* T. II. n. 39. p. 183.

Pbalaena Geometr. Piniaria. *Linn.* *Syst. Nat.* n. 210. p. 861. ed. XIII, n. 210. p. 2456. *Fn. Suec.* n. 1233.

Syst. Verz. d. W. Schm. n. 7. p. 106.

Degeer *Inf.* T. II. P. I. n. 5. p. 351. tab. 5. fig. 20.

Sepp. *Nederl. Inf.* VI. p. 17. tab. 4. fig. 8. 9.

Schaeffer *Ic. Inf.* *Ratisb.* tab. 159. fig. 1. 2.

Eine den Föhrenwäldungen zu verschiedenen Zeiten oft überaus schädliche Spanarraupe, die sich hauptsächlich in den Monaten Jun. und Jul. zeigt, und durch ihre schnelle und weit sich verbreitende Vermehrung oft grosse Verheerungen in den Nadelholzungen anrichtet.

[The text on this page is extremely faint and illegible. It appears to be a list or a series of entries, possibly related to botanical specimens, but the specific details cannot be discerned.]



Phalaena piniaria Tem. Fabr.

J. St. f.

PHALAENA Pinaria Femina.

Der Fichtenspanner. Der Föhrenspanner. Das Weibchen.

Phalaena Piniaria. Fabric. l. l. c. c.

Phalaena Geometra Tiliaria. Linn.

Lebt und wohnt bey seinem Männchen.

THE UNIVERSITY OF CHICAGO

THE UNIVERSITY OF CHICAGO
LIBRARY
540 EAST 57TH STREET
CHICAGO, ILL. 60637
U.S.A.

- Tab. 1. *Scarites cephalotes* Panzer.
 — 2. *Scarites thoracicus* Roffi.
 — 3. *Sphaeridium luteum*. Fabric.
 — 4. *Nitidula frigata* Fabric.
 — 5. *Nitidula discoides* Fabric.
 — 6. *Nitidula aenea* Fabric.
 — 7. *Nitidula viridescens* Fabric.
 — 8. *Crioceris fulvicollis* Fabric.
 — 9. *Crioceris Phellandryi* Fabric.
 — 10. *Lema subspinosa* Fabric.
 — 11. *Psilus cornutus* Jurine.
 — 12. *Astutus troglodyta* Jurine.
 — 13. *Ichneumon calculator* Fabric.
 — 14. *Crabro tibialis* Fabric.
 — 15. *Crabro philanthoides* Panzer.
 — 16. *Crabro Pterotus* Mas. Panzer
 — 17. *Crabro Pterotus* Fem. Panzer.
 — 18. *Apis neutra* Panzer.
 — 19. *Apis calendarum* Panzer.
 — 20. *Mutilla calva*. Fabric.
 — 21. *Aranea ieuna* Panzer.
 — 22. *Bombyx Monacha* Mas. Fabric.
 — 23. *Bombyx Monacha* Fem. Fabric.
 — 24. *Bombyx spreta* Fabric.



Scarites cephalotes Mihi.

SCARITES cephalotes.

Der Grosköpfige Schlupfkäfer.

- Scarites cephalotes*: alatus ater laevissimus, thorace convexo. *Carabus cephalotes*.
Fabric. Ent. syst. T. I. n. 85. p. 143. Syst. Ent. n. 22. p. 240. Spec. Inf.
T. I. n. 27. p. 304. Mant. Inf. T. I. n. 39. p. 198. *Carabus cephalotes*.
Linn. Syst. Nat. n. 9. p. 669. ed. XIII. n. 9. p. 1964. Fn. Suec. n. 788.
Carabus cephalotes. Paykull. Mon. Car. n. 65. p. 105.
Carabus cephalotes. Eiusd. Faun. Suec. T. I. n. 70. p. 151.
Scarites cephalotes. Illiger Kugel, Käf. Pr. T. I. n. 1. p. 110.
Pseudocupes maior. Voet Coleopt. I. tab. 33. fig. 2. n. 2. p. 64.
Schaeffer Ic. Inf. Ratisb. tab. 11. fig. 1.
Harrer Besch. d. Schäff. Inf. 1, Th. n. 200. p. 126.
Carabus cephalotes. Schrank. inf. austr. n. 395.

Drey und Achtzigstes Heft.

Frisch Inf. XIII. p. 25. tab. 22.

Scarites cephalotes. *Panzer* Entom. germ. I. n. 5. p. 37.

Degit in suffocatis, frequens sub lapidibus.

Alatus est. Elytra sub lente omnino punctato striata. Thorax obcordatus.
Tarsi antici pulvinati.



Scarites thoracicus Rossi.



SCARITES thoracicus.

Der kleine metallgrüne Schlupfkäfer.

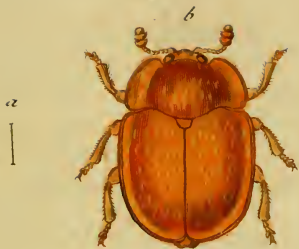
Scarites thoracicus: thorace ovato, elytris aeneis, pedibus ferrugineis.

Rossi Faun. Etrusc. T. I. n. 568. p. 217.

Illiger Kugel. Käf. Pr. T. I. n. 3. p. 111.

Habitat locis udis umbrosis, et sub lapidibus.

a Magnitudo naturalis, b Eadem aucta.



Sphaericidium luteum Fabr.

S P H A E R I D I V M luteum.

Der gelbe Kugelkäfer.

Sphaeridium luteum: luteum elytris pubescentibus laevibus. *Fabric.* Entom. syst.

T. I. n. 6. p. 79.

Sphaeridium luteum. *Paykull* Faun. Suec. T. I. n. 5. p. 58.

Nitidula lutea. *Illiger* Kugel. Käf. Pr. T. I. n. 18. p. 390.

Nitidula veris. *Rossi* Faun. etrusc. T. I. n. 147. p. 60. tab. II. fig. 12.

Nitidula lata. *Scrib.* symb. ent. I. n. 36. p. 226. tab. 14. fig. 7. male.

Strongylus luteus. *Herbst* Nat. d. Käf. IV. n. 3. p. 183. tab. 43. fig. 3. C. c.

Dermestes Rosae. *Scop.* carn. n. 39. *absque figura.*

Panzer Entom. germ. I. n. 5. p. 26.

Habitat primo vere in floribus Oxyacanth. Ligustri. Pomonae.

Thorax interdum maculis obscurioribus. Elytra ad lentem transversim striata, ut bene observavit *Scop.* Vix huius generis est: verum neque inter *Nitidulus* commode militare equidem puto.

a Magnitudo naturalis. b Eadem aucta.



Nitidula strigata Fabr.

J. St. fce



Handwritten text, possibly a species name or description, is visible at the bottom of the page, but it is extremely faint and illegible.

NITIDVLA strigata.

Der streifige Glanzkäfer.

Nitidula strigata: ovata fusca, thorace margine elytris margine lineola baseos frigaque apicis fuscis. *Fabric.* Entom. syst. T. I. n. 9. p. 257. Mant. Inf. T. I. n. 7. p. 51.

Pagkull Faun. Suec. T. I. n. 13. p. 356.

Illiger Kugel. Käf. Pr. T. I. n. 17. p. 390.

Strongylus strigatus. *Herbst* Nat. d. Käf. IV. n. 7. p. 187. tab. 43. fig. 7. G. g.

Panzer Entom. germ. I. n. 8. p. 125.

Habitat in Quercu, Crataego, Pomona.

a Magnitudo naturalis. b Eadem aucta.



Nitidula discoides Fabr.

J. St. fcc



NITIDVLA discoides.

Der in der Mitte der Flügeldecken rothgelbe Glanzkäfer.

Nitidula discoides: thorace marginato nigra coleoptrorum disco ferrugineo. *Fabric.* Entom. syst. T. I. n. 19. p. 259. Syst. Ent. n. 5. p. 78. Spec. Inf., T. I. n. 11. p. 92. Mant. Inf. T. I. n. 13. p. 52.

Herbst Nat. d. Käf. V. n. 8. p. 237. tab. 53. fig. 7. G. g.

Illiger Kugel. Käf. Pr. T. I. n. 4. p. 381.

Pauzer Ent. germ. I. n. 18. p. 127.

Habitat in Arboribus Quercus, Til.

Illustr. *Paykull* Varietatem *Nitid. haemorrhoid.* *Fabric.* facit. *Videsis* Faun. Suec. I. p. 352.

a Magnitudo naturalis. b Eadem aucta.

[The text in this section is extremely faint and illegible. It appears to be a list or a series of entries, possibly containing names and dates, but the characters are too light to transcribe accurately.]



Nitidula aenea Fabr.

NITIDVLA aenea.

Der metallgrüne Glanzkäfer. Le petit Scarabé des fleurs. Geoffr.

Nitidula aenea: viridi aenea, antennis pedibusque nigris. *Fabric.* Ent. syst. T. I. n. 24. p. 261. Syst. Ent. n. 7. p. 78. Spec. Inf. T. I. n. 13. p. 93. Mant. Inf. T. I. n. 17. p. 52.

Geoffr. Inf. T. I. n. 30. p. 86 ?

Illiger Kugel. Käf. Pr. T. I. n. 15. p. 388.

Strongylus psyllius. *Herbst* Nat. d. Käf. IV. n. 9. p. 189. tab. 43. fig. 9. J.

Dermestes psyllius. *Eiusd.* im Archiv IV. n. 11. p. 21. tab. 20. fig. 4. d.

Panzer Ent. germ. I. n. 22. p. 128.

Abundat in floribus Pomonae.

Illustri *Paykull* Variet. *Nitid. pedicular.* *Fabric.* est. Vid. Faun. Suec. p. 353.
a Magnitudo naturalis. b Eadem aucta.



Nitidula viridescens Fabr.



[Faint, illegible handwritten text, possibly a signature or date.]

NITIDVLA viridescens.

Der grünlichte gelbfüßichte Glanzkäfer.

Nitidula viridescens: viridi aenea pedibus rufis. *Fabric.* Entom. syst. T. I. n. 25.
p. 261. *Mant.* Inf. T. I. n. 18. p. 52.

Herbst Nat. d. Käf. V. n. 12. p. 240. tab. 54. fig. 1. a. A.

Panzer Entom. germ. I. n. 23. p. 128.

Habitat rarior in floribus.

Anteced. Varietas ab illustr. *Paykull*, et *Illiger* putatur;

a Magnitudo naturalis. b Eadem aucta.

THE UNIVERSITY OF CHICAGO

THE UNIVERSITY OF CHICAGO PRESS

THE UNIVERSITY OF CHICAGO PRESS

THE UNIVERSITY OF CHICAGO PRESS

THE UNIVERSITY OF CHICAGO PRESS

THE UNIVERSITY OF CHICAGO PRESS

THE UNIVERSITY OF CHICAGO PRESS

THE UNIVERSITY OF CHICAGO PRESS

THE UNIVERSITY OF CHICAGO PRESS



Crioceris fulvicollis Fabr.



CRIOCERIS fulvicollis.

Der rothhälsichte Schnurkäfer. Le Criocere aux yeux noirs. Geoffr.

Crioceris fulvicollis : capite thoraceque fulvis, elytris pedibusque testaceis. *Fabric.* Entom. syst. T. II. n. 12. p. 5.

Crioceris pallida oculis nigris. *Geoffr.* Inf. T. I. n. 6. p. 243.

Panzer Entom. germ. I. n. 1. p. 167.

Habitat haud infrequens locis depressis sylvaticis in floribus umbelliferar.

a Magnitudo naturalis. b Eadem aucta.

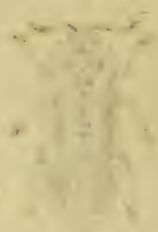
[Faint, illegible title text]

[Faint, illegible body text, possibly bleed-through from the reverse side of the page]



Crioceris Phellandryi Fabr.

J. St. f. 1.



CRIOCERIS *Phellandryi*.

Der Schnurkäfer auf dem Wasserfenchel. La Chrysomele à bandes jaunes. Geoffr.

Crioceris Phellandryi: nigra thoracis margine, elytrorumque lineis duabus flavis.
Fabric. Entom. syst. T. II. n. 43. p. 11. Syst. Ent. n. 20. p. 122. Spec^o

Inf. T. I. n. 36. p. 156. Mant. Inf. T. I. n. 46. p. 90.

Chrysomele Phellandryi. Linn. Syst. Nat. n. 111. p. 601, ed. XIII. n. 68. p. 1723.
Fn. Suec. n. 569.

Geoffr. Inf. T. I. n. 20. p. 266.

Degeer Inf. T. V. n. 25. p. 324. tab. 9. fig. 34.

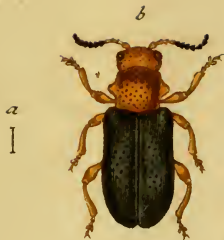
Rossi Faun. etrusc. T. I. n. 272. p. 106.

Panzer im Naturforscher XXIV. tab. I. fig. 24.

— — Ent. germ. I. n. 12. p. 169.

Habitat in *Phellandryo aquatico* Linn.

Drey und Achtzigstes Heft.



Lema subspinoza Fabr.

J. St. fec.



LEMA subspinosa.

Der schwarze Schnurkäfer mit dem stachlichten Bruststück.

Lema subspinosa: nigra capite thorace pedibusque rufis, thorace spinoso. *Fabric.*
Ent. syst. Supplem. n. 22. p. 93.

Crioceris subspinosa. *Fabric.* Ent. syst. T. II. n. 10. p. 38. *Spec. Inf.* T. I. n. 33.
p. 155. *Mant. Inf.* T. I. n. 42. p. 89.

Voet *Coleopt.* T. IV. n. 6. tab. 29. fig. 6.

Panzer *Ent. germ.* I. n. 10. p. 169.

Habitat in Corylo, Betula.

a Magnitudo naturalis. b Eadem aucta.



Psilus cornutus Turine.

PSILVS cornutus.

Die gehörnte Kahlwespe.

Psilus cornutus: ater nudus nitens, vertice cornuto.

Habitat raro in floribus. *Dn. Iurine.*

Corpus totum atrum nudum nitidum. Antennae articulis sub tetragonis remotis, ultimo ovato. Caput vertice corniculo acuto. Abdomen oblongum nitidum. Pedes nigri.

a Magnitudo naturalis. b Eadem aucta. c Caput. d Antenna. e Mandibula - aucta.



Astatus troglodyta Turine.



ASTATVS troglodyta.

Die weisgebänderte Schwebwespe.

Astatus troglodyta: laevis ater abdomine punctis septem fasciisque duabus flavis.

Sirex troglodyta. Fabric. Entom. syst. T. III, n. 21, p. 130. Mant. Inf. T. I.
n. 17. p. 258.

Habitat in Carpino, Betula.

a Magnitudo naturalis. b c Mandibula, d Antenna - aucta.



Ichneumon calculatorius Fabr.

ICHNEVMON calculator.

Die schwarze Schlupfwespe mit rothen Bruststück und Vorderfüßen.

Ichneumon calculator: ater thorace antice pedibusque ferrugineis. *Fabric. Entom.*
syst. Supplem. p. 225.

Habitat in floribus. *Dn. Iurine.*

a Magnitudo naturalis. b Eadem aucta. c Mandibula. d Antenna-aucta.



Crabro univittis Fabr.



CRABRO tibialis.

Die schwarze gelbfüßichte Horneise.

Crabro tibialis: ater abdomine petiolato: primo segmento nodoso, tibiis flavescens. *Fabric.* Entom. syst. Supplem. p. 271.

Habitat ruri in floribus. *Dn. Iurine.*

Tibiae posticae incrassatae rufae. Antennae fuscae articulo primo flavo, septimo et nono albis.

In tabula nomen prius *a Cl. Iurine* impositum, delendum.

a Magnitudo naturalis. b Eadem aucta. c Antenna d Mandibula-aucta.



Crabro philanthoides Mihi.

20110711

CRABRO philanthoides.

Die Blumenwespenartige Horneise.

Crabro philanthoides: thorace submaculato, abdomine fasciis sex flavis, primis tribus interruptis.

Legi ruri in pratis. 1800.

Habitus et statura *Crabr. sexcinct. Fabr.* est alius et omnino distinctus.

Caput atrum, leviter albido in primis margine laterali pubescens. Labium argenteum nitidum. Antennae ferratae nigrae, articulo primo maiori flavo. Thorax ater pubescens, puncto antico marginali, alio calloso ante alas, lineolaque loco scutelli flavis. Abdomen atrum, minus nitidum, subscabrum, punctatum, segmentis subelevatis, fasciis sex flavis, primis tribus interruptis. Pedes omnes flavi, tibiis posterioribus spinulosis dilatatis. Corpus subtus atrum immaculatum magis nitidum,

a Magnitudo naturalis. b Eadem aucta.

[The text on this page is extremely faint and illegible. It appears to be a list or a series of entries, possibly related to botanical specimens, but the specific details cannot be discerned.]



Crabro pterotus Mas. Miki.



CRABRO' Pterotus. Mas.

Die schwarze gelbgefleckte Horneise, mit Flügelansätzen an den Vordersehenbeinen. Das Männchen.

Crabro Pterotus: thorace immaculato, abdomine utrinque maculis duabus flavis, tibiis anticis membrana alaeformi striata auctis.

Legi quotannis copulatam haud infrequens in pratis.

Habitus et statura *Crabr. peltat. Fabric.* ast facies aliena. Caput atrum nitidum pubescens. Mandibulae apicae rufae. Labium argenteum. Antennae atrae immaculatae apice acuminatae: inter oculos lineola utrinque argentea. Thorax ater pubescens immaculatus. Scutellum immaculatum. Abdomen atrum nitidum: segmento secundo tertioque utrinque macula flava: anteriori maiori. Pedes flavi, femoribus posticis nigris. Tibiae anticae membrana subtriangulari laevi fuscescenti, basi punctata, apice striata. Variat macula anteriori minori, posteriori maiori. Mas maculis quatuor semper constans.

a Magnitudo naturalis, b Eadem aucta. c Antenna, d Tibia antica-aucta.



Crabro pterotus Femina Mihi.

CRABRO Pterotus. Femina.

Die schwarze gelbgefleckte Horneise, mit Flügelsätzen an den Vorderfüßen. Das Weibchen.

Crabro Pterotus: thorace immaculato, abdomine fasciis quinque flavis, primis tribus interruptis.

Habitat cum mare, cum quo toties in copula vidi.

Caput atrum transversum pubescens. Antennae nigrae immacolatae. Labium orbitaque oculorum argentea. Thorax immaculatus. Scutellum atrum. Abdomen atrum nitidum: segmentum primum punctis duobus contiguis flavis: secundo tertio prorsus ut in *mare*: reliquis fascia integra flavis. Pedes flavi, femoribus nigris.

a Magnitudo naturalis. b Eadem aucta.

[The text on this page is extremely faint and illegible due to low contrast and blurring. It appears to be a list or a series of entries, possibly containing names and dates, but the specific content cannot be discerned.]



Apis neutra Mili.

APIS neutra:

Die schwarze Hummel, mit weißem After.

Apis neutra: hirsuta atra, ano albo.

Legi in *Serpyllo albo foliis citri odore* C. Baub.

Parva. Corpus totum hirsutum atrum, ano solo late albo. Tarsi ferruginei.

1879

The following is a list of the
plants collected in the
mountainous region of
the State of New York,
during the summer of 1879.

15



Apis calendarum Mihi.

A P I S C a l e n d a r u m .

Die Monat - Biene.

Apis Calendarum: obscure aenea cinerea hirta, abdomine ovato: segmentorum marginibus cinereis.

Legi haud infrequens per omnem aestatem in sylvaticis editioribus.

Parva et distincta. Caput atrum fronte dense cinereo hirta. Antennae nigrae breves. Thorax ater immaculatus cinereo hirtus. Abdomen ovatum obscure aeneum segmentorum marginibus cinereis. Pedes nigri cinereo hirti.

a Magnitudo naturalis. b Eadem aucta.

[Faint, illegible handwritten text, likely bleed-through from the reverse side of the page]



Mutilla calva Turine.

M V T I L L A c a l v a.

Die kahle Mutille.

Mutilla calva: nigra vertice thoraceque rufis, abdominis segmentis margine cinereis. *Fabric.* Entom. syst. Supplem. p. 282.

Habitat in sylvaticis. Dn. *Iurine*.

a Magnitudo naturalis. b Eadem aucta.

1874

1874

1874

1874

1874



Aranea iciuma Nishi.

J. Sturm fec.

ARANEA *ieiuna*.

Die nüchterne Spinne.

Aranea ieiuna: abdomine ovato, alba, nigro maculata, pedibus quatuor anticis longioribus.

Legit amicissimus *Flessa* Mense Novembr. 1800. in sylvaticis, mecumque benevola manu communicavit. In vitro arcte clausa, absque ullo victu ad Mensē Martii 1801. vixit, beneque se habuit.

Caput album. Palpi albi nigro annulati, articulo ultimo nigro. Thorax rotundatus nudus albus, maculis duabus anticis nigris minoribus, posticis maioribus. Abdomen ovatum album maculis duabus dorsofalibus, punctisque quatuor postice nigris. Pedes albi nigro punctati, tibiis nigro annulatis: anticis longioribus. Ad *Aran. laeviped.* *Fabric.* et *Linn.* propius accedere videtur, sed diversa.

a. Magnitudo naturalis. b Eadem aucta. c Oculorum situs.

1887
1888
1889

1890
1891
1892
1893
1894
1895
1896
1897
1898
1899
1900
1901
1902
1903
1904
1905
1906
1907
1908
1909
1910
1911
1912
1913
1914
1915
1916
1917
1918
1919
1920
1921
1922
1923
1924
1925
1926
1927
1928
1929
1930
1931
1932
1933
1934
1935
1936
1937
1938
1939
1940
1941
1942
1943
1944
1945
1946
1947
1948
1949
1950
1951
1952
1953
1954
1955
1956
1957
1958
1959
1960
1961
1962
1963
1964
1965
1966
1967
1968
1969
1970
1971
1972
1973
1974
1975
1976
1977
1978
1979
1980
1981
1982
1983
1984
1985
1986
1987
1988
1989
1990
1991
1992
1993
1994
1995
1996
1997
1998
1999
2000
2001
2002
2003
2004
2005
2006
2007
2008
2009
2010
2011
2012
2013
2014
2015
2016
2017
2018
2019
2020
2021
2022
2023
2024
2025
2026
2027
2028
2029
2030
2031
2032
2033
2034
2035
2036
2037
2038
2039
2040
2041
2042
2043
2044
2045
2046
2047
2048
2049
2050
2051
2052
2053
2054
2055
2056
2057
2058
2059
2060
2061
2062
2063
2064
2065
2066
2067
2068
2069
2070
2071
2072
2073
2074
2075
2076
2077
2078
2079
2080
2081
2082
2083
2084
2085
2086
2087
2088
2089
2090
2091
2092
2093
2094
2095
2096
2097
2098
2099
2100



Bombyx monacha Mas Fabr.

J. Sturm fec.



[Faint, illegible handwritten text]

BOMBYX Monacha Mas.

Die Nonne. Der Apfelspinner. Das Männchen.

- Bombyx Monacha*: alis deflexis albis atro undatis, abdominis incisuris sanguineis,
Fabric. Ent. syst. T. IV. n. 119. p. 446. Syst. Ent. n. 58. p. 574. Spec.
Inf. T. II. n. 81. p. 188. Mant. Inf. T. II. n. 109. p. 120.
- Phalaena Bomb. Monacha.* Linn. Syst. Nat. n. 43. p. 821. ed. XIII. n. 43.
p. 2421. Fn. Suec. n. 1130.
- Syst. Verz. d. W. Schmet.* n. 5. p. 52.
- Scopol. carn.* n. 490. *absque icone.*
- Esper* eur. Schm. II. p. 192. tab. 37. fig. 1—6.
- Kleem.* Beitr. I. p. 273. tab. 23.
- Schaeffer* Ic. Inf. Ratisb. tab. 68 fig. 2. 3.
- Borkhausen* eur. Schm. T. III. p. 307.
- Lördens Monogr.*

Die Raupe dieses Spinners findet sich nicht nur auf der Eiche, sondern auch auf der Föhre. Am liebsten frisst sie verschiedene Arten, der an diesen Bäumen befindlichen Flechten. Die Zeit ihrer Erscheinung fällt in die Monate Julius und August. Wenn sie sich verwandeln will, macht sie wenig Vorbereitung, sondern zieht zwischen den Blättern, oder in die Rissen der Rinde, bloß einige Fäden, in welchen sie sich aufhängt, und zu einer glänzend braunen Chrysalide wird. Ihre Entwicklung erfolgt in drey bis vier Wochen, bey warmen Wetter auch schon in vierzehn Tagen. Man hat an den Föhren Chrysaliden von diesem Spinner bey dem strengsten Froste gefunden, die dennoch sehr lebhafte Bewegungen geäußert haben.



Bombyx monacha Fem. Fabr.

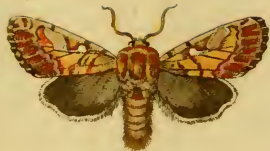


BOMBYX Monacha. Femina.

Die Nonne. Der Apfelspinner. Das Weibchen.

Bombyx Monacha. Fabric. Linn. 1. 1. c. c.

Lebt und wohnt bey seinem Männchen.



Bombyx spreta Fabr.

J. Sturm fec



[Faint, illegible text or signature at the bottom of the page]

BOMBYX Spreta.

Der Föhrenspinner. Der Kiefernspinner.

Bombyx Spreta: alis deflexis carneo luteoque variis: stigmatibus albis. *Fabric.*

Ent. syst. T. IV. n. 151. p. 455. Mant. Inf. T. II. n. 139. p. 124.

Loeschge im Naturforscher XXI. p. 27. tab. 3.

Panzer in *Kobs* Monogr. tab. I. fig. 1—12.

Esper eur. Schm. II. tab. 125. fig. 1—6.

Berkhausen eur. Schm. T. IV. p. 443.

Die Raupe dieses Spinners lebt an der *Föhre*, wo sie bekanntlich bereits die größten Verwüstungen angerichtet hat. Die Zeit ihrer Erscheinung dauert von der Mitte des Julius bis in den August. Zur Verwandlung begibt sie sich in die Erde und wird zu einer rothbraunen oder schwarzen Chrysalide. Sie liegt über Winter, und der Spinner entwickelt sich im künftigen Frühling.

-
- Tab. 1. Sphaeridium Colon Fabric.
 — 2. Sphaeridium ferrugineum Fabric.
 — 3. Sphaeridium globosum Paykull.
 — 4. Carabus Weigellii Panzer.
 — 5. Cantharis abdominalis Fabric.
 — 6. Cantharis tristis Fabric.
 — 7. Nitidula aestiva Fabric.
 — 8. Curculio quinquepunctatus Fabric.
 — 9. Curculio horridus Panzer.
 — 10. Hypophloeus testaceus Panzer
 — 11. Tenthredo exillatis Panzer.
 — 12. Tenthredo montana Panzer.
 — 13. Tenthredo obscura Fabric.
 — 14. Ichneumon rubricator Panzer.
 — 15. Ichneumon publicarius Fabric.
 — 16. Chalcis femorata Panzer.
 — 17. Leucospis Gigas Mas. Fabric.
 — 18. Leucospis Gigas Fem. Fabric.
 — 19. Pompilus tricolor Fabric.
 — 20. Pompilus cruentus Jurine.
 — 21. Bembex integra Fabric.
 — 22. Bembex oculata Jurine.
 — 23. Philanthus corronatus Fabric.
 — 24. Philanthus flavipes Fabric.



Sphaeridium Colon Fabr.

S P H A E R I D I V M Colon.

Der Colon-Kugelkäfer.

Sphaeridium Colon: luteum thorace punctis elytris macula marginali nigris. *Fabric.* Entom. syst. T. I. n. 4. p. 78.

Strongylus quadripunctatus. *Herbst* Nat. d. Käf. IV. n. 5. p. 185. tab. 43. fig. 5.
E. e.

Strongylus variegatus. *Einsd.* Nat. d. Käf. tab. 34. fig. 4. D. d.

Nitidula quadripunctata. *Illiger* Kugel. Käf. Preuf. I. n. 19. p. 391.

Sphaeridium Colon. *Paykull.* Faun. Suec. I. n. 4. p. 57.

Panzer Entom. germ. I. n. 4. p. 26.

Cl. *Schneidero* huius speciei exemplum debeo.

Caput obscure ferrugineum, certo situ omnino nigrum apparet. Thorax dorso obscurus, et in hoc puncta quatuor denudata obscuriora, quae tamen nisi lenis ope

detegi possunt. Elytra ferruginea pilis griseis undique oblecta, margine laterali late nigra. Abdomen in meo specimine haud nigrum, sed ferrugineum. Antennae ferrugineae, clava omnino nigra.

Dermestes Colon Linn. vix huc pertinet, aliudque prorsus insectum esse mihi equidem videtur: verum neque Cl. *Illigeri* et *Paykull.* descriptiones absque omni exceptione in nostrum cadunt, quamvis certus sim, me *Sphaerid. Colon Fabric.* huc delineasse.

a Magnitudo naturalis. b Eadem aucta.



Sphaericidium ferrugineum Fabr.

S P H A E R I D I V M f e r r u g i n e u m .

Der eisenrostfarbige Kugelkäfer.

Sphaeridium ferrugineum: ferrugineum elytris striatis. *Fabric.* Entom. syst. T. I.
n. 12. p. 80. Mant. Inf. T. I. n. 6. p. 43.

Anisotoma ferrugineum. *Illiger Kugelan Käf.* Preuss. I. n. 3. p. 75.

Tetratoma ferruginea. *Herbst Nat. d. Käf.* IV. n. 9. p. 90. tab. 38. fig. 9. J.

Sphaeridium ferrugineum. *Paykull.* Faun. Suec. I. n. 24. p. 72.

Panzer Entom. germ. I. n. 9. p. 27.

Legi rarius sub cortice Tiliae.

Ferrugineum pubescens, sutura saepius nigricante.

a Magnitudo naturalis. b Eadem aucta.

[Faint, illegible text, likely bleed-through from the reverse side of the page]



Sphaeridium globosum Payk.

SPHAERIDIVM globosum.

Der kreisrunde Kugelkäfer.

Sphaeridium globosum: globosum, ferrugineum, capite thoracis medio, elytrorumque sutura fuscescentibus. *Paykul. Faun. Suec. I. n. 22. p. 70.*

Tetratoma globosa. Herbst Nat. d. Käf. IV. n. 2. p. 84. tab. 38. fig. 2.

Haud frequens in truncis Querc. exefis. Synonym. *Herbstii* in *Agathidio globofo* Faun. 37. 13. delenda.

a Magnitudo naturalis b Eadem aucta.



Carabus Weigeli Nishi.

J. St. fec.



CARABVS *Weigeli.*

Der Weigliche Laufkäfer.

Carabus Weigeli: apterus ater elytris connatis, striis tribus elevatis interruptis fo-
veolis granulatis serie triplici.

Habitat in Silesia: praecipue in *Comitatu Glazensi*, ubi sub crepusculo ad
ripas amnium circumvagatur, lumbricos et insectorum aquatiliū larvas venatur, e
cuius rapina victitat.

Nomen speciei habet ab inventore suo *V. S. R. Iob. Ad. Val. Weigelio*
Pastore in Hasselbach prope Schmiedeberg in Silesia meritissimo, qui utrumque se-
xum benevole mecum communicavit.

Magnitudo *Car. auronitent. Fab.* Corpus totum atrum subaeneum parum ni-
tens. Caput nudum, medio elevatum sublaevigatum, margine laterali stuis aliquot
elevatis confluentibus: occipite nucaque transversim rugosis, punctis interspersis
plurimis. Oculi fusci globosi prominuli. Antennae nigrae, articulis primis quatuor
nudis, reliquis pube cinerascens. Palpi quatuor tantum porrecti, articulis ulti-

mis truncatis. Mandibulae validae aduncae. Thorax cordatus ater marginatus, basi transversus, dorso subplanus, linea impressa longitudinali exaratus, posticeque utrinque foveolato-impressus. Margines laterales elevati, postice subsinuati: angulis anticis posticisque prominulis. Scutellum minutum triangulare. Elytra connata, aeta subaenea, oblongo-obovata, ante apicem excisa, dorso depresso plana, marginata: marginibus lateralibus declivibus: striis tribus dorsalibus elevatis, hisce foveolis 7—8 granulatis interceptis. Cuncta superficies punctis plurimis elevatis tum sparsis confluentibus, tum in series obsoletas digestis, rugoso exasperata. Margini laterali utrinque adiacet stria solitaria, e punctis elevatis confertioribus excavatisque conflata, ad apicem numerosioribus. Corpus subtus atrum nitidius. Pedes nigri: tibiis apice bispinosis.

Me non fugere poterat, Cl. *Creutzer* in *Versuche* etc. p. 108. tab II. fig. 14. *Carabus*, nostro quamvis haud ab similem, sub nomine *nodulosi* descripsisse atque delineasse. Quoniam autem, cum figura, aliam et ab illo alienam faciem indicabat, tum descriptio Cl. *Viri* non in omnibus cum nostro concordabat, ratus hinc fore actum consultius, si nostrum potius separatim sisterem, quam inique cum hac fortasse diversa specie coniungerem. Eadem *Carabi variolosi Fabric.* n. 94. conditio est: siquidem et illum in nonnullis cum nostro convenire, in multis autem ab hoc abluere animadverterem; quare nollem, in tanto hoc characterum discrimine pro eodem proponere, nullo minus, cum thoracis circumscriptio aliena, id mihi interdicere videbatur.

a Magnitudo naturalis. b Elytron lente auctum.



Cantharis abdominalis Fabr.

J. St. fec.



CANTHARIS abdominalis.

Der rothbauchigte Afterleuchtkäfer.

Cantharis abdominalis: thorace marginato nigro, ore abdomineque flavis, elytris caerulefcentibus. *Fabric.* Entom. system. fupplem. p. 67.

Habitat in floribus. Cl. *Jurine*.

Quamvis descriptio *Illustr. Fabric.* in tantum duntaxat cum nostro specimine conveniat, certus tamen sum, eandem esse speciem, quam ipse Cl. *Brogniart* dedi. *Jurine in litter.*

a Magnitudo naturalis. b Eadem aucta.



Cantharis tristis Fabr.

CANTHARIS tristis.

Der schwarzbraune Afterleuchtkäfer.

Cantharis tristis: thorace marginato obscure fusca, antennarum primo articulo pallido. *Fabric.* Entom. system. supplem. p. 68.

Habitat cum conspeciebus. *Dn. Iurine.*

a Magnitudo naturalis. b Eadem aucta.

[Faint, illegible text, likely bleed-through from the reverse side of the page]



Nitidula aestiva Fabr.

NITIDULA aestiva.

Der Sommer-Glanzkäfer.

Nitidula aestiva: testacea subtomentosa, thorace transverso emarginato, oculis
nigris. *Fabric.* Entom. syst. T. I. n. 6. p. 256. System. Entom. n. 2. p. 77.
Spec. Inf. T. I. n. 5. p. 91. Mant. Inf. T. I. n. 5. p. 51.

Silpha aestiva. *Linn.* Syst. Nat. n. 32. p. 574. ed. XIII. n. 9. p. 1629. Fn. Suec.
n. 465.

Nitidula aestiva. *Paykull.* Fn. Suec. T. I. n. 5. p. 350.

Nitidula depressa. *Illiger Kugelann.* Käf. Pr. I. n. 12. p. 386.

Nitidula filacea. *Herbst* Nat. d. Käf. V. n. 4. p. 232, tab. 53. fig. 3. C. c.

Panzer Entom. germ. I. n. 5. p. 125.

Habitat haud raro in floribus primo vere,

a Magnitudo naturalis. b Eadem aucta.

1880

1880

Faint, illegible text, possibly bleed-through from the reverse side of the page.



Curculio quinquepunctatus Fabr.

J. St. fec.

CVRCVLIO quinquepunctatus.

Der fünfpunktige Rüsselkäfer.

Curculio quinquepunctatus: longirostris femoribus dentatis, elytris futura punctisque duobus albis. *Fabric.* Entom. syst. T. II n. 173. p. 435. *System.* Entom. n. 70. p. 140. *Spec. Inf.* T. I. n. 97. p. 178. *Mant. Inf.* T. I. n. 123. p. 107.

Curculio quinquepunctatus. *Linn.* Syst. Nat. n. 64. p. 64. ed. XIII. n. 64. p. 1768. *Fn. Succ.* n. 618.

Poykull Mon. Curc. n. 14. p. 15.

Herbst im Archiv. V. n. 40. p. 75. tab. 24. fig. 18. g.

Schäffer Ic. Inf. Ratisb. tab. 1. fig. 12.

Harrer Beschreib. der Schöff. Inf. I. n. 300. p. 185.

Panzer Entom. germ. I. n. 82. p. 213.

Habitat in fructicibus non raro.

a Magnitudo naturalis. b Eadem aucta.



Curculio horridus Mihi.

J. St. fec.

CVRCVLIO horridus.

Der stachlichte Rüsselkäfer.

Curculio horridus: longirostris femoribus dentatis, obscure rufus, thorace elytris-
que spinis horridis.

Habitat in Montis piniferi plantis. Legit Dn. *Funk* hanc speciem ibidem
mecumque benevole communicavit.

Magnitudo *Curc. Scopular Fabr.* sed habitus alienus. Rostrum fuscum apice
depressum sub lente parum pubescens. Caput obscurum fronte cinerascens. Oculi
parvi fusci. Antennae testaceae, clava fusca. Thorax obscure rufus, gibbus antice
posticeque elevatus, spinis erectis per totam superficiem sparsis numerosis, hinc vel
inde pilis plurimis albis translucentibus. Scutellum minutum triangulare obscurum.
Elytra obscure rufa cum nigredine, inprimis ad suturam: puncto humerali utrinque
elevato, umbraque elytra transversim percurrente nigricantibus. Elytra striis eleva-
tis, et in singula stria, spinae plurimae erectae, intermixtae pilis numerosis candi-
cantibus. Pedes rufi, femoribus mediis et posticis dentatis. Corpus subtus obscure rufum.

a Magnitudo naturalis. b Eadem aucta.



Hypophloeus testaceus Miki.

J. St. fec.

HYPOPHLOEVS testaceus.

Der rothgelbe Pochkäfer.

Hypophloeus testaceus: testaceus elytris substriatis.

Habitat in Montis piniferi ligno. Legit cum anteced. *Curcul.* Dn. *Funk.*

Corpus totum testaceum. Caput pubescens. Antennae obscuro fuscae articulis ultimis testaceis. Oculi nigri. Thorax quadratus minutissime punctatus, leviter pubescens, marginatus. Scutellum tetragonum. Elytra laevia pilis adpressis fericeo nitentia, striis sub pube subtilissimis subpunctatis translucetibus. Pedes testacei. An *Hypopbl. Fraxini* Kugelann, apud *Schneider* in *Promptuar.* V. n. 5. p. 527?

a Magnitudo naturalis. b Eadem aucta.



Tenthredo axillaris Mihi.

TENTHREDO axillaris.

Die Blattwespe mit Epauletten, Le Frelon à Epaulettes, Geoffr.

Tenthredo axillaris: antennis clavatis luteis, thorace antice flavo, abdominis segmentis flavis, intermediis nigris.

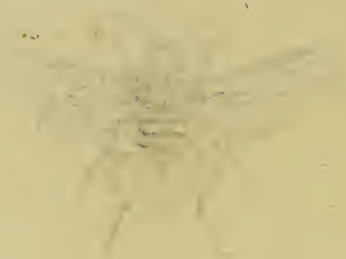
Geoffr. Inf. T. II. n. 1. p. 262.

Habitat in editioribus. Dn. *Iurine*.

Habitus, statura et magnitudo *Tenthr. luteae Fabric.* sed omnino diversus. Caput nigrum pubescens: clypeo late emarginato flavo: occipite orbitaque rufis. Oculi ovati nigri. Antennae luteae. Thorax ater pubescens punctatus, antice flavus, quae flavedo supra angulos anticos utrinque late extenditur. Scutellum transversum rufum. Abdomen cylindricum flavum, segmentis intermediis nigris margine reliquisque flavis. Femora omnia incrassata, postica clavata obscure fusca. Tibiae rufae, posticae incurvae. Tarsi testacei. Alae anticae, margine antico late flavo.



Tenthredo montana Miki.



TENTHREDO montana.

Die Bergeblattwespe. Le Frelon à chancrure et ventre jaune. Geoffr.

Tentredo montana: antennis clavatis luteis, thorace fusco nitido, abdomine flavo, basi aeneo.

Geoffr. Inf. T. II. n. 2. p. 263.

Habitat in montanis. *Dn. Iurine.*

Habitus et statura anteced. sed magnitudine diversa. Caput nigricans pubescens, clypeo orbitaque flavis. Oculi fusci. Antennae luteae. Thorax fuscus, certo situ aeneo nitens, margine antico angusto flavo: axillis pariter flavicantibus. Scutellum flavum. Abdomen ovatum flavum; segmento primo, secundo totis flavis, tertio medio tantum, quarto macula dorsali fusco aeneo nitentibus. Macula flava segmenti primi per hiatus tantum formatur. Pedes omnes fusci. Alae anticae flavicantes, margine crassiori fusco.



Tenthredo obscura Fabr.



TENTHREDO obscura.

Die dunkelschwarze Blattwespe.

Tenthredo obscura: antennis clavatis, corpore glabro nigro. *Fabric.* Entom. syst. T. III. n. 11. p. 107. *System. ent.* n. 9. p. 319. *Spec. Inf.* T. I. n. 10. p. 407. *Mant. Inf.* T. I. n. 10. p. 253.

Habitat in saxosis. *Dn. Turine.*

a Magnitudo naturalis, b Eadem aucta.



Ichneumon rubricator Mich.

ICHNEVMON rubricator.

Die blutrothe Schlupfwespe mit schwarzen Kopf und After.

Ichneumon rubricator: sanguineus, thorace infra scutellum ano, femoribus posticis nigris

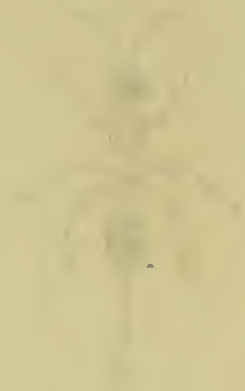
Habitat in floribus inter Aphides. *Dn. Turine.*

Parvus. Caput nigrum orbita albicante. Antennae fuscae in medio albo fasciatae, articulis anterioribus apice albicantibus. Thorax sanguineus: scutellum sanguineum, regio infra scutellum nigra, demum lobus posticus thoracis denuo sanguineus. Abdomen sanguineum, petiolo, segmentis ultimis aculeoque nigris. Pedes rufescentes, femoribus posticis fuscis. Corpus totum glabrum, hinc vel illinc levissime tantum pubescens. Lobus thoracis posticus utrinque spina obsoleta auctus. Pectus sanguineum. Alae hyalinae margine antico fuscescente.

a Magnitudo naturalis. b Eadem aucta.



Ichneumon pedicularius Fabr.



ICHNEVMON pulicarius.

Die Floh-Schlupfwespe.

Ichneumon pulicarius: apterus niger thorace abdominis petiolo tibiisque rufis.
Fabric. Entom. syst. T. III. n. 241. p. 191.

Habitat in arenosis.

a Magnitudo naturalis. b Eadem aucta.



Chalcis femorata Miki.

CHALCIS femorata.

Die rundschenklichte Schenkelwespe.

Chalcis femorata: atra, femoribus posticis rotundatis flavis medio nigro fasciatis subtus ferratis.

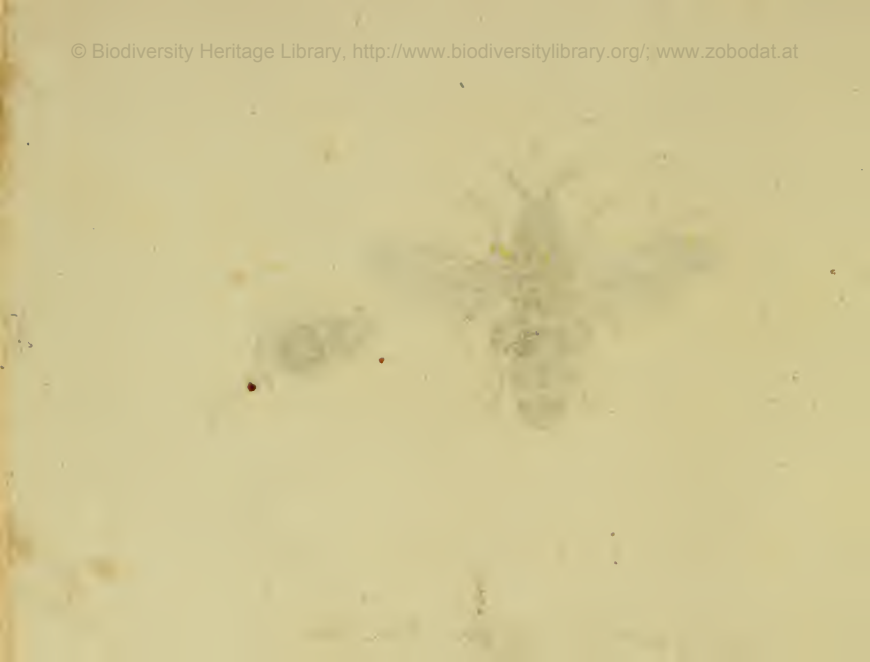
Habitat in editioribus subalpinis. *Dn. Irvine.*

Maxima quae mihi equidem in hoc genere innotuit species. Caput nigrum opacum punctis plurimis elevatis. Oculi pallidi. Mandibulae nigrae. Antennae breves nigrae. Thorax ater opacus punctis plurimis elevatis, immaculatus: puncto ante alas tantum calloso luteo. Scutellum nigrum, pilis flavicantibus raris cinctum. Lobus posticus thoracis postice utrinque dente brevi auctus. Abdomen nigrum gibbum ovatum, segmento primo laevigato nitidissimo, reliquis pilis griseis incumben-
tibus, punctisque plurimis impressis. Pedes flavi: femoribus posticis subrotundis, basi fascia nigris: tibiis posticis incurvis immaculatis. Alae ritu generis subaveniae.

a Magnitudo naturalis. b Eadem aucta. c Pes posticus auctus.



Leucospis Gigas Mas Fabr.



LEVCOSPIS Gigas Mas.

Die größte Rückenwespe. Das Männchen.

Leucospis Gigas: nigra thorace punctis duobus dorsalibus, abdomine sessili: fasciis quatuor flavis. *Fabric.* Entom. system. T. III. n. 1. p. 245.

De Vill. Entom. III. n. 2. p. 261. tab. 8. fig. 18.

De la Tourette Acad. des sciences IX. p. 730. fig. 1. 2. 3. 4.

Rossi Faun. Etrusc. T. II. n. 856. p. 80.

Habitat in regionibus editioribus.

a Magnitudo naturalis. b Eadem aucta. c Pes posticus auctus.

1875-1876

1877-1878

1879-1880

1881-1882

1883-1884

1885-1886

1887-1888



Leucospis Gigas Fem. Fabr.

LEVCOSPIS Gigas Femina.

Die größte Rückenwespe. Das Weibchen.

Leucospis Gigas: nigra thorace punctis duobus dorsalibus, abdomine sessili fasciis
quatuor flavis. *Fabric.* Entom. system. T. III. n. 1. p. 245.

Devill. l. c.

De la Tourette l. c.

Roffi l. c.

Habitat cum mare.

a Magnitudo naturalis. b Eadem aucta.



Pompilus tricolor Fabr.

POMPILVS tricolor.

Die dreyfärbigē Grabwespe.

Pompilus tricolor: niger abdomine utrinque lunulis argenteo fericeis: basi rufo, apice nigro. *Fabric. Entom. syst. Supplem. p. 251.*

Sphex tricolor. Fabric. Ent. syst. T. III. n. 71. p. 215.

Habitat raro in floribus.

In meis speciminibus lunulae argenteo fericeae, *fasciae* angustae sunt, sen potius segmenta postica argenteo-fericea marginata.

Aegre Pompilis affocianda species, potius ad *Evaniis* deleganda.

a Magnitudo naturalis. b Eadem aucta.



Pompilus cruentus Fabr.



POMPILVS cruentus.

Die schwarze Grabwespe mit dem blutrothen Bruststück.

Pompilus cruentus: ater thorace sanguineo, abdomine fasciis duabus albis, anteriori late emarginata.

Habitat in argillofis. *Cl. Urine.*

Parvus. Caput nigrum, orbita antice alba. Mandibulae aduncae rufae, apice bidentatae fuscae. Antennae fuscae subtus apiceque rufae. Thorax laete sanguineus. Abdomen sessile ovatum nigrum fasciis duabus angustis albis, anteriori late emarginata. Anus acutus. Pedes rufi: posticis nigris. Alae hyalinae, nervo antico crassiori flavicante.

a Magnitudo naturalis. b Eadem aucta.

[Faint, illegible text, likely bleed-through from the reverse side of the page]



Bembex integra Fabr.



Faint, illegible text at the bottom of the page, possibly a title or description.

BEMBEX integra.

Die unterbrochen gebünderte Schnabelwespe.

Bembex integra: labio rotundato nigra abdomine fasciis sex flavis: anterioribus quinque interruptis, femoribus nigris. *Fabric. Entom. system. T. III. n. 12. p. 251.*

Habitat in subalpinis. *Dn. Turine.*

Labium conicum deflexum: anus integer. Antennarum articulus concolor.
Alter sexus.

a Magnitudo naturalis. b Alae auctae.

1875



Bembex oculata Turine.



BEMBEX oculata.

Die Augen-Schnabelwespe.

Bembex oculata: labio conico, thorace immaculato, abdomine nigro fasciis flavis, prima interrupta, secundo ocellata, reliquis repandis.

Habitat in montanis. *Dn. Iurine.*

Magnitudo et habitus antecedentis. Caput nigrum cinereo pubescens, orbita antice flava. Frons flava, punctorum pari sub antennis nigro. Labium conicum deflexum flavum. Mandibulae basi flavae, apice fuscae, medio dentatae. Antennae nigrae, articulo primo subtus flavo. Oculi fusci. Thorax fuscus cinereo pubescens, antice lineola ad pectus versus repanda, lineola sub alis, punctoque calloso ante alas flavis. Abdomen atrum nitidum, fasciis quatuor flavis, prima interrupta, secunda biocellata, reliquis repandis. Pedes flavi, femoribus supra lineola nigricantibus. Tibiae anticae unifariam spinosae. Anus integer.

1871
No. 10

The following is a list of the
plants collected by me in
the mountains of the
Andes, during my expedition
in the month of August, 1871.
The plants are arranged
in the order in which they
were collected, and are
numbered according to the
order in which they were
collected. The names of
the plants are given in
Latin, and in Spanish, and
in the native language of
the country. The names of
the collectors are given in
Latin, and in Spanish, and
in the native language of
the country.



Philanthus coronatus. Fabr.

PHILANTVS coronatus.

Die gekrönte Blumenwespe.

Philantus coronatus: niger thorace maculato, abdominis fasciis quinque flavis: anticis duabus interruptis. *Fabric.* Entom. syst. T. III, n. I. p. 288.

Habitat raro in floribus.

a Magnitudo naturalis. b Eadem aucta,



Philanthus flavipes Fabr.

PHILANTHVS flavipes.

Die gelbfüßichte Blumenwespe.

Philanthus flavipes: niger thorace maculato, abdomine flavo: segmentorum marginibus anoque nigris. *Fabric. Entom. system. T. III. n. 7. p. 290.*

Crabro flavipes. Fabric. Mant. Inf. T. I. n. 8. p. 295.

Habitat in floribus, locis argillofis,

a Magnitudo naturalis. b Eadem aucta.

