

Catalogue of the Holotype and Allotype Specimens of the Family Saturniidae BOISDUVAL, 1837 ("1834") Preserved in Museum Zoologicum Bogoriense, Cibinong, Indonesia (Lepidoptera)

ULRICH PAUKSTADT, LAELA H. PAUKSTADT
& YAYUK R. SUHARDJONO

Katalog der im Museum Zoologicum Bogoriense, Cibinong,
Indonesien, aufbewahrten Holotypen und Allotypen der
Familie Saturniidae BOISDUVAL, 1837 („1834“) (Lepidoptera)

Zusammenfassung: Im folgenden Beitrag werden die im Museum Zoologicum Bogoriense, (MZB), Cibinong, Indonesien, aufbewahrten Holotypen und Allotypen der Familie Saturniidae BOISDUVAL, 1837 („1834“) (Lepidoptera) aufgelistet. Zusätzlich werden Angaben zum Typenfundort, zum Typenmaterial und zur Originalbeschreibung gemacht. Drei ♂ Holotypen, deren Abbildungen in den Originalbeschreibungen leider versäumt wurden, werden hier erstmalig farbig abgebildet, um Missverständnissen und Verwechslungen mit ähnlichen Taxa vorzubeugen. Dieses sind *Antheraea (Antheraea) rosemariae* HOLLOWAY, NÄSSIG & NAUMANN, 1995, *A. (A.) paukstadorum* NAUMANN, HOLLOWAY & NÄSSIG, 1996 und *Antheraea (A.) taripaensis* NAUMANN, NÄSSIG & HOLLOWAY, 1996. Insgesamt werden derzeit sechzehn ♂ Holotypen und drei ♀ Allotypen der Familie Saturniidae in Coll. MZB/Cibinong aufbewahrt. Zwei als Allotypus und Parallotypus gekennzeichnete Exemplare in Coll. MZB/Cibinong werden hier unmissverständlich als zusätzliches Material mit in diese Liste aufgenommen; sie sind eindeutig keinem Typenmaterial hinzuzurechnen, weil valide Beschreibungen der Taxa offensichtlich fehlen. Dieses sind *Antheraea lugubris dempoensis* TOXOPEUS (Manuskriptname) und *Loepa tobana* TOXOPEUS (Manuskriptname). Gegen Ende 2002 werden hochauflösende Abbildungen sämtlicher Typen in Museum Zoologicum Bogoriense auf CD-ROM verfügbar sein.

Key words: Lepidoptera, Saturniidae, type material, Museum Zoologicum Bogoriense, Indonesia.

Ringkasan: Semua Holotype dan Allotype yang disimpan di Museum Zoologicum Bogoriense Cibinong, Indonesia akan didaftarkan di dalam skripsi ini. Selain itu juga diberitahukan mengenai data-data tempat penangkapannya dan mengenai Type itu sendiri, serta pembuatan skripsi aslinya. Tiga Holotype jenis jantan, yang sangat disayangkan lupa

digambarkan di dalam skripsi aslinya, untuk pertama kali akan dipertunjukkan di sini. Ini maksudnya untuk menghindari salah pengertian dan kekeliruan dengan taxa yang hampir sama dikemudian hari. Jenis itu adalah *Antheraea (Antheraea) rosemariae* HOLLOWAY, NÄSSIG & NAUMANN, 1995, *A. (A.) paukstadorum* NAUMANN, HOLLOWAY & NÄSSIG, 1996 dan *Antheraea (A.) taripaensis* NAUMANN, NÄSSIG & HOLLOWAY, 1996. Sampai saat ini ada enambelas Holotype jenis jantan dan tiga Allotype jenis betina dari keluarga Saturniidae yang disimpan di koleksi MZB/Cibinong. Dua jenis sebagai Allotype dan Parallotype yang ditandai di Koleksi MZB/Cibinong sengaja didaftarkan sebagai specimen tambahan. Ke dua jenis itu, *Antheraea lugubris dempoensis* TOXOPEUS (nama di skripsi) dan *Loepa tobana* TOXOPEUS (nama di skripsi) sangat jelas bukan sebagai Type, karena publikasinya tidak diketemukan.

Introduction

The following contribution deals with the holotype and allotype specimens of the family Saturniidae BOISDUVAL, 1837 ("1834") (Lepidoptera), which are presently preserved in coll. Museum Zoologicum Bogoriense (MZB), Cibinong, Indonesia and includes three specimens in Coll. L. H. Paukstadt (Wilhelmshaven) assigned to the MZB. The holotype and allotype specimens of the family Saturniidae in coll. MZB/Cibinong are listed herein. Notes on the type locality, type material and original description of each specimen are given. Three ♂ holotypes, which were accidentally not figured in the original description by the authors, are figured in color for the first time to avoid misunderstandings and confusions with closely related taxa. Those are *Antheraea (Antheraea) rosemariae* HOLLOWAY, NÄSSIG & NAUMANN, 1995, *A. (A.) paukstadorum* NAUMANN, HOLLOWAY & NÄSSIG, 1996, and *Antheraea (A.) taripaensis* NAUMANN, NÄSSIG & HOLLOWAY, 1996. Presently sixteen ♂ holotype and three ♀ allotype specimens of the family Saturniidae are preserved in coll. MZB/Cibinong. The whereabouts of the ♂ holotype of *Antheraea (A.) hollowayi* NÄSSIG & NAUMANN, 1998 are discussed. Concluded from text in the original description this specimen should be preserved in coll. MZB/Cibinong, cf. Naumann & Nässig 1998, but the specimen was not located in coll. MZB/Cibinong thus far. Two specimens in coll. MZB/Cibinong, which are labeled being ♀ allotype and parallotype specimens are unambiguously listed herein being additional material but clearly no type specimens due to lack of valid descriptions of the taxa. Those are *Antheraea lugubris dempoensis* TOXOPEUS (manuscript name) and *Loepa tobana* TOXOPEUS (manuscript name). In late 2002 high

resolution color pictures of type specimens in Museum Zoologicum Bogoriense (Cibinong) are available on CD-ROM.

Holotype and allotype specimens in coll. MZB/Cibinong

Family Saturniidae BOISDUVAL, 1837 ("1834")
Subfamily Saturniinae BOISDUVAL, 1837 ("1834")

Tribus Attacini BLANCHARD, 1840

Genus *Attacus* LINNAEUS, 1767

Attacus supermani U. PAUKSTADT & L. H. PAUKSTADT, 2002

Type locality: Indonesia, Island of Alor, G. [Mt.] Krikla, Kampung Relabai, Desa Wakapsir, Kabupaten Kalabahi, Kecamatan Alor Barat Daya, 400 m a.s.l.

Type material: ♂ holotype (presently without coll.-no. MZB.LEPI.) and ♀ allotype (presently without coll.-no. MZB.LEPI.) are assigned to coll. MZB/Cibinong (presently preserved in coll. L. H. Paukstadt).

Original description: Paukstadt, U. & Paukstadt, L. H. (2002): *Attacus supermani* n. sp., eine neue Saturniidae (Lepidoptera) von Alor, Indonesien. – Galathea – Berichte des Kreises Nürnberger Entomologen eV (Nürnberg), 12. Supplement: pp. 17–25; col.-pl. with 5 figs., 1 fig.

Genus *Samia* HÜBNER, 1819 ("1816")

Samia yayukae U. PAUKSTADT, PEIGLER & L. H. PAUKSTADT, 1993

Type locality: Indonesia, Province Nusa Tenggara Timur [NTT], district Manggarai, Island of Flores, Ruteng, Golo Lusang (Mt.), (7 km south of Ruteng), 1500 m a.s.l.

Type material: ♂ holotype (coll.-no. MZB.LEPI. 480) and ♂ genitalia slide U. Paukstadt no. 0361 in coll. MZB/Cibinong.

Original description: Paukstadt, U., Peigler, R. S. & Paukstadt, L. H. (1993): *Samia yayukae* n. sp., eine neue Saturniidae (Lepidoptera) von Flores, Indonesien. – Entomologische Zeitschrift (Essen), 103 (13): pp. 229–235; 5 figs.

Samia naumanni U. PAUKSTADT, PEIGLER & L. H. PAUKSTADT, 1998

Type locality: Indonesia, Maluku [Moluccas] Province, District Maluku Utara [North], Sula Archipelago, Sanana I. [sic? recte Sulabesi Island?], Kecamatan Sanana, 2 km W Wai Bau, 180 m a.s.l.

Type material: ♂ holotype in coll. MZB/Cibinong (coll.-no.

Original description: Paukstadt, U., Peigler, R. S. & Paukstadt, L. H. (1998): *Samia naumanni* n. sp., eine neue Saturniide vom Banggai- und Sula-Archipel, Indonesien (Lepidoptera: Saturniidae). – Entomologische Zeitschrift (Essen), 108 (3): pp. 114–121; 5 figs.

Samia kikibudiamini U. PAUKSTADT, L. H. PAUKSTADT & SUHARDJONO, 2002

Type locality: Indonesia, Island of Alor, Kab. Alor., Kec. Alor Barat Daya, Dusun Pintu Mas, Desa Majwal, Mt. Muna, 920 m a.s.l.

Type material: ♂ holotype and the genitalia slide U. Paukstadt no. 1236 are assigned to coll. MZB/Cibinong (presently in coll. L. H. Paukstadt).

Original description: Paukstadt, U., Paukstadt, L. H. & Suhardjono, Y. R. (2002): *Samia kikibudiamini* n. sp., eine neue Saturniide von der Insel Alor, Indonesien (Lepidoptera: Saturniidae). – Galathea – Berichte des Kreises Nürnberger Entomologen eV (Nürnberg), Supplement 12: pp. 3–11; 1 col.-pl. with 4 figs, 8 b/w-figs.

Tribus Saturniini BOISDUVAL, 1837 ("1834")

Genus *Antheraea* HÜBNER, 1819 ("1816")

Subgenus *Antheraea* HÜBNER, 1819 ("1816")

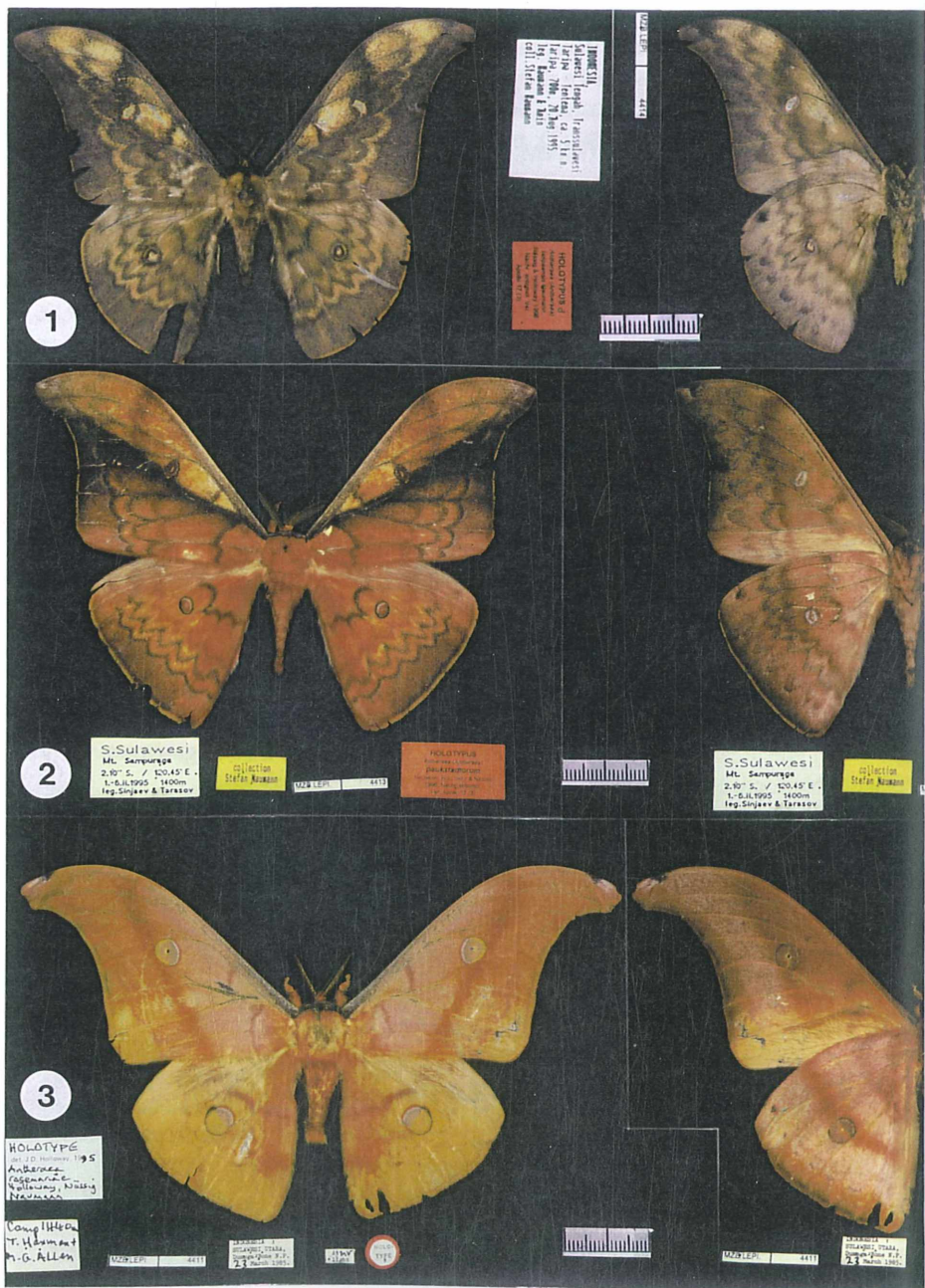
Antheraea rosemariae HOLLOWAY, NÄSSIG & NAUMANN, 1995

Type locality: Indonesia, Province North Sulawesi, Dumonga-Bone National Park, Camp '1440', 1440 m a.s.l.

Type material: ♂ holotype in coll. MZB/Cibinong (coll.-no. MZB.LEPI. 4411).

Original description: Holloway, J. D., Nässig, W. A. & Naumann, S. (1995): The *Antheraea* HÜBNER (Lepidoptera: Saturniidae) of Sulawesi, with descriptions of new species. Part 1: *Antheraea* (*Antheraea*) *rosemariae* n. sp. – Nachrichten des Entomologischen Vereins Apollo (Frankfurt am Main), N.F. 16 (2/3): pp. 297–308; 9 figs. on each one col.-pl. and b/w-pl.

Fig. 1–3. *Antheraea* (*Antheraea*) spp. from Sulawesi. 1) *taripaensis* NAUMANN, NÄSSIG & HOLLOWAY, 1996; 2) *paukstadtorum* NAUMANN, HOLLOWAY & NÄSSIG, 1996; 3) *rosemariae* HOLLOWAY, NÄSSIG & NAUMANN, 1995 (left dorsal and right ventral view). (Pictures by U. & L. H. Paukstadt with OLYMPUS OM-2N)



- Antheraea paukstadorum* NAUMANN, HOLLOWAY & NÄSSIG, 1996
 Type locality: Indonesia, Sulawesi, Province South Sulawesi, Mt. Sampuraga, 1400 m a.s.l., 2°10'S 120°45'E.
 Type material: ♂ holotype in coll. MZB/Cibinong (coll.-no. MZB.LEPI. 4413).
 Original description: *in* Holloway, J. D., Naumann, S. & Nässig, W. A. (1996): The *Antheraea* HÜBNER (Lepidoptera: Saturniidae) of Sulawesi, with descriptions of new species. Part 2: The species of the *frithi*-group (Results of Project Wallace No. 149). - Nachrichten des Entomologischen Vereins Apollo (Frankfurt am Main), N.F. 17 (3): pp. 225–258; col.-pls., b/w figs.
- Antheraea taripaensis* NAUMANN, NÄSSIG & HOLLOWAY, 1996
 Type locality: Indonesia, Sulawesi, Province Central Sulawesi, Trans-sulawesi [road] Taripa-Tentana, ca.5 km N of Taripa, 700 m a.s.l.
 Type material: ♂ holotype in coll. MZB/Cibinong (coll.-no. MZB.LEPI. 4414).
 Original description: *in* Holloway, J. D., Naumann, S. & Nässig, W. A. (1996): The *Antheraea* HÜBNER (Lepidoptera: Saturniidae) of Sulawesi, with descriptions of new species. Part 2: The species of the *frithi*-group (Results of Project Wallace No. 149). - Nachrichten des Entomologischen Vereins Apollo (Frankfurt am Main), N.F. 17 (3): pp. 225–258; col.-pls., b/w figs.
- Antheraea viridiscura* HOLLOWAY, NÄSSIG & NAUMANN, 1996
 Type locality: Indonesia, Sulawesi, Province North Sulawesi, Dumoga-Bone National Park, 1440 m a.s.l.
 Type material: ♂ holotype in coll. MZB/Cibinong (coll.-no. MZB.LEPI. 4415).
 Original description: *in* Holloway, J. D., Naumann, S. & Nässig, W. A. (1996): The *Antheraea* HÜBNER (Lepidoptera: Saturniidae) of Sulawesi, with descriptions of new species. Part 2: The species of the *frithi*-group (Results of Project Wallace No. 149). - Nachrichten des Entomologischen Vereins Apollo (Frankfurt am Main), N.F. 17 (3): pp. 225–258; col.-pls., b/w figs.
- Antheraea kageri* U. PAUKSTADT, L. H. PAUKSTADT & SUHARDJONO, 1997
 Type locality: Indonesia, Sulawesi, Sulawesi Selatan Province, Gunung [Mt.] Sampuraga, 1400 m a.s.l.
 Type material: ♂ holotype (coll.-no. MZB.LEPI. 451) and ♂ genitalia slide U. Paukstadt no. 0539 in coll. MZB/Cibinong.
 Original description: Paukstadt, U., Paukstadt, L. H. & Suhardjono, Y. R. (1997): *Antheraea* (*Antheraea*) *kageri* n. sp., eine neue Saturniide

(Lepidoptera: Saturniidae) von Sulawesi, Indonesien. – Entomologische Zeitschrift (Essen), 107 (2) pp. 53–59; 7 figs.

Antheraea kelimutuensis U. PAUKSTADT, L. H. PAUKSTADT & SUHARDJONO, 1997

Type locality: Indonesia, Nusa Tenggara Timur Province [NTT, eastern Lesser Sunda Islands], island of Flores, district Manggarai, Liang Puring, Kampung Redong.

Type material: ♂ holotype in coll. MZB/Cibinong (coll.-no. MZB.LEPI. 500).

Original description: Paukstadt, U., Paukstadt, L. H. & Suhardjono, Y. R. (1997): *Antheraea (Antheraea) ranakaensis* n. sp. und *Antheraea (Antheraea) kelimutuensis* n. sp., zwei neue Saturniiden von der Insel Flores, Indonesien (Lepidoptera: Saturniidae). – Entomologische Zeitschrift (Essen), 107 (7): pp. 265–276; 10 figs.

Antheraea ranakaensis U. PAUKSTADT, L. H. PAUKSTADT & SUHARDJONO, 1997

Type locality: Indonesia, Nusa Tenggara Timur Province (NTT), Island of Flores, [western Flores], District Manggarai, Golo [=Mt.] Lusang, 1820 m a.s.l., 9 km S of Ruteng.

Type material: ♂ holotype (coll.-no. MZB.LEPI. 501) and genitalia slide U. Paukstadt no. 0339 in coll. MZB/Cibinong.

Original description: Paukstadt, U., Paukstadt, L. H. & Suhardjono, Y. R. (1997): *Antheraea (Antheraea) ranakaensis* n. sp. und *Antheraea (Antheraea) kelimutuensis* n. sp., zwei neue Saturniiden von der Insel Flores, Indonesien (Lepidoptera: Saturniidae). – Entomologische Zeitschrift (Essen), 107 (7): pp. 265–276; 10 figs.

Genus *Loepa* MOORE, 1859

Loepa cynopis NÄSSIG & SUHARDJONO, 1989

Type locality: West Jawa, Cibodas, Mt. Gedeh, 1400 m a.s.l.

Type material: ♂ holotype (coll.-no. MZB.LEPI. 456) and genitalia slide W. A. Nässig no. 358/86, and the ♀ allotype (coll.-no. MZB.LEPI. 457) in coll. MZB/Cibinong.

Original description: Nässig, W. A. & Suhardjono, Y. R. (1989): A new species of the genus *Loepa* (Saturniidae) from Java. – Tinea, 12 (23): pp. 205–210; 7 b/w-figs.

Cricula hayatia U. PAUKSTADT & SUHARDJONO, 1992

Type locality: Indonesia, Province Nusa Tenggara Timur (NTT), Flores Island, District Manggarai, (Mt.) Golo Lusang (9 km south of Ruteng), 1820 m a.s.l.

Type material: ♂ holotype (coll.-no. MZB.LEPI. 486) and genitalia slide U. Paukstadt no. 0386 in coll. MZB/Cibinong.

Original description: Paukstadt, U. & Suhardjono, Y. R. (1992): *Cricula hayatia* n. sp., eine neue Saturniidae (Lepidoptera) von Flores, Indonesien. – Entomologische Zeitschrift (Essen), 102 (14): pp. 253–258; 4 figs.

Cricula trifenestrata banggaiensis NAUMANN & U. PAUKSTADT, 1997

Type locality: Indonesia, Sulawesi Tengah, Pulau Peleng, 1 km SW Luksagu, ca. 60 m a.s.l.

Type material: ♂ holotype and genitalia slide W. Nässig no. 1123/97 in coll. MZB/Cibinong (coll.-no. MZB.LEPI. 450).

Original description: Naumann, S. & Paukstadt, U. (1997): Eine neue Unterart von *Cricula trifenestrata* (Helfer, 1837) (Lepidoptera: Saturniidae) von Pulau Peleng im Banggai-Archipel, Indonesien. – Nachrichten des Entomologischen Vereins Apollo (Frankfurt am Main), N.F. 18 (2/3): pp. 195–204; col.-pl. with 8 figs., 11 b/w figs.

Cricula trifenestrata tenggarensis U. PAUKSTADT, L. H. PAUKSTADT & SUHARDJONO, 1998

Type locality: Indonesia, Eastern Lesser Sunda Islands, Nusa Tenggara Timur Province, Sumba Island, Waimungura, 600–800 m a.s.l.

Type material: ♂ holotype (coll.-no. MZB.LEPI. 4442) in coll. MZB/Cibinong.

Original description: Paukstadt, U., Paukstadt, L. H. & Suhardjono, Y. R. (1998): *Cricula trifenestrata tenggarensis* n. subsp., eine neue Unterart der Gattung *Cricula* Walker 1855 von den östlichen Kleinen Sundainseln, Indonesien (Lepidoptera: Saturniidae). – Entomologische Zeitschrift (Essen), 108 (6): pp. 232–240; 8 figs.

Genus *Pararhodia* COCKERELL, 1914

Pararhodia rotalis U. PAUKSTADT, L. H. PAUKSTADT & SUHARDJONO, 1992

Type locality: Indonesia, Province Irian Jaya, Top Camp [N slopes of the Jayawijaya Mts., between the Baliem and the Taritatu River, ca. 230

km SW'ly of Jayapura], 2100 m a.s.l. led unter www.biologiezentrum.at

Type material: ♂ holotype (coll.-no. MZB.LEPI. 483) and ♀ allotype (coll.-no. MZB.LEPI. 484) in coll. MZB/Cibinong.

Original description Paukstadt, U., Paukstadt, L. H. & Suhardjono, Y R. (1992): *Pararhodia rotalis* n. sp., eine neue Saturniidae (Lepidoptera) von Irian Jaya, Indonesien. – Entomologische Zeitschrift (Essen), 102 (21): pp. 389–394; 3 b/w-figs.

Type material assigned to MZB (Cibinong), but presently preserved in unknown location

Antheraea (Antheraea) hollowayi NÄSSIG & NAUMANN, 1998

Type locality: Indonesia, Province Maluku, District Central Maluku, Seram Island, Gunung (=Mt.) Binaia, north slopes, 1200 m a.s.l., lower montane forest.

Type material: location of ♂ holotype presently unknown.

Original description: in Naumann, S. & Nässig, W. A. (1998): Two new species of *Antheraea (Antheraea)* of the *helferi*-group from Eastern Indonesia (Lepidoptera: Saturniidae). - Nachrichten des Entomologischen Vereins Apollo (Frankfurt am Main), N.F. 18 (4): pp. 319–330; col.-pl. with 6 figs., 3 b/w-figs.

Remarks: The description based on a single ♂ specimen only. The location of the ♂ holotype was mentioned in the original description being in coll. The Natural History Museum (BMNH), London, but will later be given to the Museum Zoologicum Bogoriense (MZB), Indonesia. No ♂ holotype of *A. (A.) hollowayi* was found being present in coll. MZB/Cibinong. Most probably the ♂ holotype is still preserved in The Natural History Museum/London (pers. comm. S. Naumann (Berlin) and W. A. Nässig (Frankfurt am Main)).

Specimens considered not being type material

Antheraea lugubris dempoensis TOXOPEUS (manuscript name)

Origin: Indonesia, Central Sumatera, G. (Mt.) Dempo, Cagar Alam, 1400 m a.s.l.

Material: ♀ specimen labeled “Allotype” in coll. MZB/Cibinong (coll.-no. MZB.LEPI. 482).

Remarks: no description of *A. lugubris dempoensis* by Toxopeus known thus far. Therefore the name *dempoensis* presently is considered being a manuscript name.

Loepa tobana TOXOPEUS (manuscript name)

Origin: Indonesia, [Sumatera,] Seriboe, Dolok, S. O. K.

Material: ♀ specimen labeled "Parallotype" in coll. MZB/Cibinong (coll.-no. MZB.LEPI. 478).

Remarks: no description of *L. tobana* by Toxopeus known thus far. Presently the name *tobana* is considered being a manuscript name.

Remarks by the authors: This catalogue is updated at a later date. Further paratype specimens are included into "A Catalogue of the Saturniidae (Lepidoptera) in Museum Zoologicum Bogoriense (Cibinong, Indonesia)", which is in preparation by us. In late 2002 the „A Catalogue of the Wild Silkmoths of the Family Saturniidae BOISDUVAL, 1837 ("1834") Preserved in Coll. Museum Zoologicum Bogoriense, Cibinong, Indonesia (Lepidoptera)" will be available on CD-ROM.

Verfasser

Ulrich Paukstadt & Laela Hayati Paukstadt

Knud-Rasmussen-Strasse 5

D-26389 Wilhelmshaven, Germany

e-mail: ulrich.paukstadt@t-online.de

web site: <http://www.wildsilkmoth-paukstadt.de>

<http://www.wildsilkmoth-indonesia.com>

Dr. Yayuk Rahayuningsih Suhardjono

Museum Zoologicum Bogoriense, Zoological Division

Research and Development Centre for Biology

Indonesian Institute of Sciences (LIPI)

Jl. Raya Cibinong – Jakarta km 46

Cibinong, Bogor, Indonesia

e-mail: yayukrs@indo.net.id

web site: <http://bio.lipi.go.id>

ZOBODAT - www.zobodat.at

Zoologisch-Botanische Datenbank/Zoological-Botanical Database

Digitale Literatur/Digital Literature

Zeitschrift/Journal: [Galathea, Berichte des Kreises Nürnberger Entomologen e.V.](#)

Jahr/Year: 2003

Band/Volume: [12 Supp](#)

Autor(en)/Author(s): Paukstadt Ulrich, Paukstadt Laela Hayati, Suhardjono Yayuk Rahayuningsih

Artikel/Article: [Catalogue of the Holotype and Allotype Specimens of the Family Saturniidae Boisduval, 1837 \("1834"\) Preserved in Museum Zoologicum Bogoriense, Cibinong, Indonesia \(Lepidoptera\) 52-61](#)