

| | | | |
|------------------------------|----|-------|-----------------|
| Koleopterologische Rundschau | 77 | 39–42 | Wien, Juli 2007 |
|------------------------------|----|-------|-----------------|

Cicindela (Austrocicindela) fontanea sp.n. – a new Tiger Beetle species from Namibia (Coleoptera: Cicindelidae)

K. WERNER (†)

Abstract

A new species of Cicindelidae, *Cicindela (Austrocicindela) fontanea* sp.n., is described from Namibia. Photographs of habitat and specimens, and line drawings of the new species are presented.

Key words: Coleoptera, Cicindelidae, *Cicindela*, taxonomy, new species, Namibia, Africa.

Introduction

The amount of rain received in southern Namibia in January and February, 2006, turned many places green enabling the discovery of a new Tiger Beetle species. This new species is herein described. It is the third species in the subgenus *Austrocicindela* RIVALIER, 1963, known to occur in Namibia. A revision of the subgenus *Austrocicindela* was published by CASSOLA (1993). This small subgenus, known only from southern Africa (Mocambique, Namibia, South Africa, and Zimbabwe), shows remarkable affinities with the Holarctic subgenus *Cicindela* s.str.

Cicindela (Austrocicindela) fontanea sp.n. (Figs. 1, 2, 7)

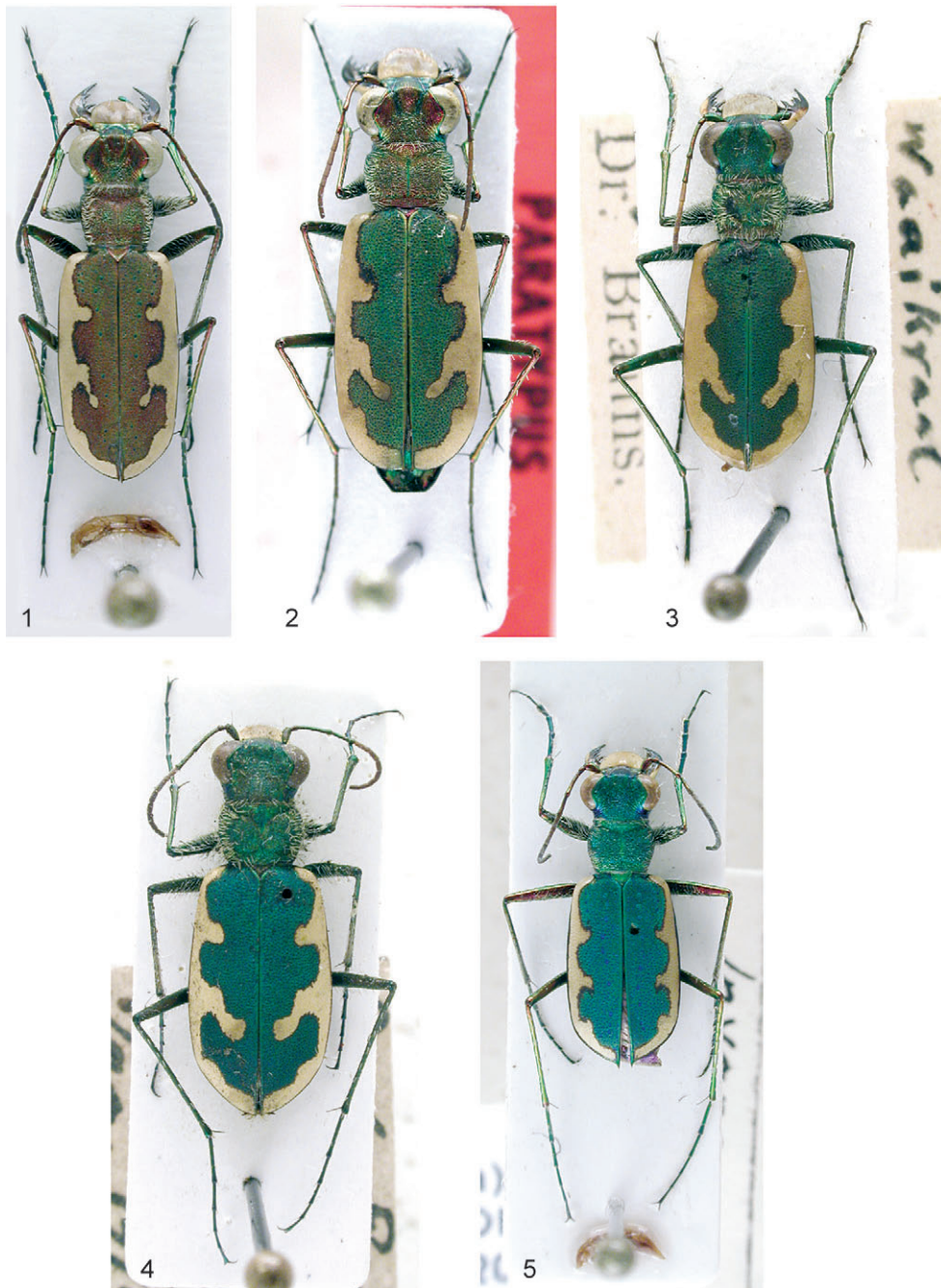
Type locality: Namibia, Hardap District, mountain valley between Maltahöhe and Helmeringhausen (Fig. 6).

Type material: **Holotype:** ♂, Namibia, Hardap District, Maltahöhe to Helmeringhausen, 8.II.2006, K. Werner leg.; deposited in the National Museum of Namibia, Windhoek, Namibia. **Paratypes:** 1 ♂, 3 ♀, same data as holotype; deposited in the collection of the author (KWC).

Diagnosis: The new species is strongly reminiscent of the type species of *Austrocicindela*, *C. pudibunda* BOHEMAN, 1860 (Figs. 3, 4, 8), from which it can be distinguished by the aedeagus, the pronotal pubescence and by the elytral lateral margins.

The shape of the labrum and aedeagus of *C. fontanea* somewhat resemble those of *C. gemmigera* HORN, 1903 (Figs. 5, 9), which is known from Mocambique and Zimbabwe.

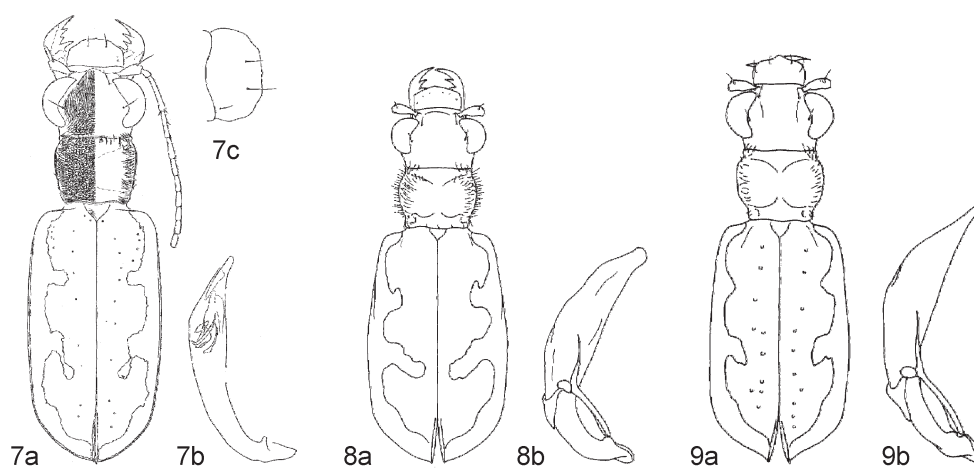
Description: Size: 11–12 mm. Dorsum greenish-brown. Elytra parallel-sided, with whitish-yellow markings. Pronotum trapezoidal, although, basally, it is slightly narrower. Head shiny, coppery; clypeus finely granulated; frons and vertex with longitudinal striae, in the apical part turning into punctures, with central depression between eyes, two supraorbital bristles near each eye. Labrum (Fig. 7c): testaceous with narrow brown marginal part, four to six labral setae, central labral tooth more pronounced in the females; mandibles dark brown with testaceous part on outer margins. Maxillary and labial palpi with long white bristles, testaceous except last segments, which are glabrous and greenish metallic. Genae metallic coppery with longitudinal striae. Scape with one subapical seta. Antennae filiform, first four antennomeres shiny coppery, remaining segments dull brown with fine pubescence.



Figs. 1–5: Habitus of *Cicindela* (*Austrocicindela*), 1) *C. fontanea* ♂, holotype, 2) *C. fontanea* ♀, paratype (KWC), 3) *C. pudibunda* ♂, South Africa, Capland, Willowmore, Waaikraal, 4.II.1925, Dr. Brauns leg. (KWC), 4) *C. pudibunda* ♀, South Africa, Transvaal, De la Rey, 1.1919, Dr. Brauns leg. (KWC), 5) *C. gemmiger* ♂, Zimbabwe (S. Rhodesia), Inyanga, 21.XII.1972 (KWC).



Fig. 6: Type locality of *Cicindela (Austrocicindela) fontanea*.



Figs. 7–9: 7) *Cicindela (Austrocicindela) fontanea* (drawings by Peter Schüle), a) habitus, b) aedeagus, c) labrum of holotype, 8) *C. pudibunda* (after CASSOLA 1993), a) habitus, b) aedeagus, 9) *C. gemmigera* (after CASSOLA 1993), a) habitus, b) aedeagus.

Pronotum coppery metallic with coarse granulation, basal center and edges with decumbent white upright setae; proepisterna shiny coppery metallic, with white bristles. Elytra green or brown, white markings as in Figs. 1, 2, 7a; with small metallic greenish-blue elytral punctures, in the dark elytral part with bluish-green reflections. Legs coppery metallic and with white bristles except for the inner part of the metafemur. Underside shiny coppery metallic with white hairs along epipleura, except abdominal sternites, which are glabrous.

Aedeagus as in Fig. 7b.

Habitat: All five specimens of *Cicindela (Austrocicindela) fontanea* were active along a temporary watercourse with yellowish sand. They moved on open sand patches between herbs and grass. This species is a good and rapid flier.

Etymology: The epithet “fontanea” (pertaining to a spring) refers to the fact that the type specimens were collected near a small spring in a normally very dry environment.

Acknowledgements

Particular thanks are due to Mr. Toivo Uahengo, conservation scientist of the Ministry of the Environment and Tourism in Windhoek, Namibia, who made this research possible by accepting my application and delivering a collecting permit (no. 1047/2006) for Namibia. Thanks are also due to Peter Schüle (Herrenberg, Germany), who kindly completed the drawings, and especially to Fabio Cassola (Roma, Italy), who generously assisted my understanding of these species. I am indebted to Charles M. Barksdale (Prairie du Sac, Wisconsin, U.S.A.) for proofreading the manuscript.

Zusammenfassung

Eine neue Sandlaufkäferart, *Cicindela (Austrocicindela) fontanea* sp.n. aus Namibia wird beschrieben und mit Fotos und Zeichnungen dargestellt.

References

- CASSOLA, F. 1993: (Studies on tiger beetles 69) – A revision of the *Austrocicindela* group (Coleoptera, Cicindelidae). – *Fragmenta entomologica* 25 (1): 43–65.
- WERNER, K. 2000: The Tiger Beetles of Africa (Coleoptera: Cicindelidae), Vol. 2. – Hradec Kralove: Taita Publishers, 200 pp.
- WERNER, K. & SCHÜLE, P. 2006: New country records of African Tiger Beetles with some taxonomical notes (Coleoptera: Cicindelidae). – *Entomologia Africana* 11 (1): 33–40.

Karl WERNER (†)

Lorystraße 19, D – 86971, Peiting, Germany (kw-tigerbeetles@t-online.de)

ZOBODAT - www.zobodat.at

Zoologisch-Botanische Datenbank/Zoological-Botanical Database

Digitale Literatur/Digital Literature

Zeitschrift/Journal: [Koleopterologische Rundschau](#)

Jahr/Year: 2007

Band/Volume: [77_2007](#)

Autor(en)/Author(s): Werner Karl [Charly]

Artikel/Article: [Cicindela \(Austrocicindela\) fontanea sp.n. - a new Tiger Beetle species from Namibia \(Coleoptera: Cicindelidae\) 39-42](#)