

Linzer biol. Beitr.	28/2	821-827	31.12.1996
---------------------	------	---------	------------

## A study of the Spanish Cremastinae (Hymenoptera, Ichneumonidae)

J. KOLAROV

**Abstract:** In the present paper 28 Cremastinae species from Spain are established. Two new species and a new subspecies are described. A host for *Temelucha interruptor* GRAV. was found.

### Introduction

Spanish Cremastinae have been poorly studied. After identification of the materials, preserved in Museo Nacional de Ciencias Naturales-Madrid, 28 Cremastinae species are established. 2 new species and 1 new subspecies are described. For each species faunistic data from the pin labels are given. The general distribution is based on SEDIVY (1970 & 1971), KASPARYAN (1981) and HORSTMANN (1990).

I am very indebted to Dr. Carmen Rey del Castillo for the access to the materials from the collection mentioned above.

### List of the species

#### *Pristomerus orbitalis* HOLMGREN

Cirvelos, Toledo, 6.6.1990, on *Thapsia vilosa* L., 4 ♀♀; Los Malinos, Madrid, 27.7.1990, on *Foeniculum vulgare* MILLER, 1 ♀; Castrovido, Burgos, 15.8.1989, on *F. vulgare* L., 1 ♀; El Pardo (El Goloso), Madrid, 9.-15.8.1991, 2 ♀♀; 9.-16.7.1991, 2 ♀♀; 15.-22.8.1991, 1 ♀; Aranjuez, 27.5.1920, 1 ♂ and 1 ♀.

**Distribution:** Europe and Mongolia.

#### *Pristomerus vulnerator* PANZER

San Perdo de Bedoya (Calabria), 19.7.1990, on *Rubus* sp., 1 ♀; Cataluna, Barcelona, 3.6.1898, 2 ♂♂; Caruna, 1 ♀.

**Distribution:** Europe, Turkey, Siberia, Japan and Korea.

***Dimophora evanialis* GRAVENHORST**

Escorial Los Accoyos, 7.8.1991, on yellow pan, 1♂; 21.7.1990, 1♂; 1.8.1991, 1♀.

**Distribution:** Western Europe.

***Dimophora nitens* GRAVENHORST**

Jaen S. Cazorla, Rablehondo, 1300 m, 5.-12.9.1992, 1♂; 27.9.-3.10.1992, 2♂♂; 20.-27.9.1992, 1♀.

**Distribution:** Western Europe.

***Cremastus aegypticus* SZEPLIGETI**

Honadada, Andren, 1♂.

**Distribution:** Canarian Isles, Spain, Corsica, France, Italy, Greece and Egypt.

***Cremastus bellicosus* GRAVENHORST**

El Pardo (El Goloso), Madrid, 25.10.-1.11.1991, 1♂ and 1♀; Jaen, S. Casorla Rablehondo, 1300 m, 13.-20.9.1992, 4♂♂ and 2♀♀; 5.-12.9.1992, 1♂; 20.-27.9.1992, 1♂.

**Distribution:** From Sweden, England and Spain from West to Moldavia of East.

***Cremastus brevigenalis* sp. nov.**

**Male:** Front wing 5,0 mm long. Head transversal (61:28), strongly narrowed behind (Fig. 1). Eye and ocellus very large, eye almost touching lateral ocelli. Front part of frons with middle carina. Flagellum with 27 segments, postannellus 3,4 as long as wide. Inner eye orbitae visibly convergent down (Fig. 2). Clypeus distinctly separated from face, convex, with curved front margin. Cheek 5,5 shorter than basal width of mandible. Mesonotum rather wide (63:55), coarse punctured, brilliant, with shallow notauli. Lateral carina of scutellum not reaching its apex. Epomia present, pronotum coarse punctured in upper hind corner. Prepectal carina almost reaching subtegular ridge, not raised in the middle. Meso- and metapleura rare and fine punctured, brilliant, sternauli weak. Front wing with wide stigma. Second recurrent vein weakly postfurcal, nervulus interstitial. Parallel vein reaching postnervulus above middle (Fig. 3). Nervellus vertical, not intercepted. Legs with moderate proportions. Hind femur 5,0 as long as wide, correlation between hind tarsal segments as 45:23:18:10:9. Tarsal claws pectinate to middle. Propodeum with triangular basal area. Areola 2,0 as long as wide, with parallel longitudinal carinae.

First abdominal segment as long as second tergite. Postpetiolus and second tergite striated longitudinally.

Black; eye orbitae entirely, a spot in middle of face, clypeus, mandible, palpi, pronotum in front, mesonotum around notauli, scutellum, tegula, subtegular ridge, apical half of front and middle coxa and first trochanter, front and middle second trochanters and hind femur from above yellow; pronotum and second tergite brown; front and middle legs except from above yellow orange; hind legs blackish brown, tibia yellowish in the middle.

**F e m a l e** unknown.

It is distinguished from all known *Cremastus* species by extraordinarily large ocelli, convergent downwards face and very short cheeks.

**H o l o t y p e**: ♂, Spain, El Ventorrillo, 1480 m, (Cercedilla), August 1962, leg. I. Abato, preserved in collection of Museo Nacional de Ciencias Naturales Madrid (MNCNM).

### ***Cremastus crassicornis* THOMSON**

Without locality, ex *Psyche* sp. (Psychidae), 15.5.1912, 1 ♂ (Coll. Seebold).

**D i s t r i b u t i o n**: Western Europe and Moldavia.

### ***Cremastus kratochvili* SEDIVY**

Rivas (Coll. Dusmet), 1 ♀.

**D i s t r i b u t i o n**: Czech Republic, Island Sylt, Spain, Bulgaria and Mongolia.

### ***Cremastus lineatus lineatus* GRAVENHORST**

Montarco, 7.10.1906, 1 ♀; Dehesa, Valencia, Giner Mari, 30.10.1938, 1 ♂.

The last specimen has 10 mm long body.

**D i s t r i b u t i o n**: Sweden, Spain, Greece, Turkey and Crimea.

### ***Cremastus lineatus ibericus* subsp. nov.**

**M a l e**: Front wing 3,4 mm, body 5,0 mm long. Flagellum with 33 segments, postannellus 3,7 as long as wide. Nervulus interstitial. Basal area of propodeum triangular, connected with areola by long single carina.

Black; clypeus yellowish laterally; thorax except tegula entirely black, coxae black, front and middle coxa with white spot apically; hind femur black brown. In the rest as in nominal subspecies.

**F e m a l e** unknown.

It is distinguished from the nominal subspecies by shorter body and front wing, areolation of propodeum, black mesonotum and different colouration.

**H o l o t y p e**: ♂, Spain, Navas del Rey, Madrid, 800 m, 5.6.1985, leg A. Vives, in collection of MNCNM.

***Cre mastus puberulus* SZEPLIGETI**

El. Escorial (Coll. Dusmet), 1 ♀; Escorial, Los Arroyos, Madrid, 9.6.1991, 1 ♂; Archena, May 1928, 1 ♂; Collizares Selgos 1 ♂.

**Distribution:** Spain, Germany, Switzerland, Italy, Czech Republic, Bulgaria and Moldavia.

***Cre mastus pungens* GRAVENHORST**

Padualus, 1.10.1895, 1 ♀.

**Distribution:** Western Europe, Bulgaria, Siberia and Mongolia.

***Cre mastus spectator* GRAVENHORST**

El Pardo (El Goloso), Madrid, 9.-17.10.1991, 2 ♂ ♂; 25.10.-1.11.1991, 1 ♂ and 1 ♀.

**Distribution:** Europe, Turkey and Siberia - Irkutsk region.

***Nothocremastus* sp.**

Fontanar, 19.5.1920 (Coll. Dusmet).

The specimen is indeterminable because part of the abdomen is missing.

***Temelucha albipennis* ZETTERSTEDT**

Alcola, 12.6.1916, 1 ♀; Vacia Madrid, 14.6.1910, 1 ♀.

**Distribution:** Spain, Middle Europe and Moldavia.

***Temelucha arenosa* SZEPLIGETI**

Achasna de Stragor Zaragoza, 19.6.1929, 1 ♀; Aranguez, 27.5.1920, 1 ♀; Sesena, 6.5.1916, 1 ♀.

**Distribution:** Western Europe and Turkey.

***Temelucha caudata* SZEPLIGETI**

Montargo, 17.5.1908, 1 ♀; Sierra de Guadarrama, 17.6.1915, 1 ♀; Sierra de Alcazaz, Pts. Cruce tillas (Albasete), 27.4.1989, 1 ♀.

**Distribution:** Spain, France, Czech Republic, Austria, Italy, Hungary, Bulgaria and Turkey.

***Temelucha confluens* GRAVENHORST**

Sas de Fegura El Pardo, June 1903, (Escalero), 1 ♀; Jacia Madrid, 12.6.1925, 1 ♀.

**Distribution:** Spain, France, Czech Republic, Austria, Italy, Hungary, Bulgaria and Turkey.

***Temelucha decorata* GRAVENHORST**

San Pedro de Bedoya, Cantabria, 17.-30.8.1990, 3 ♀ ♀; 24.-31.8.1991, 1 ♀; Castrovido (Burgos), 15.8.-6.9.1990, 3 ♀ ♀; Tama, Cantabria, 23.-26.8.1990, 2 ♀ ♀; San Martin Luina Asturias, 17.-28.8.1992, 1 ♀; Sevilla, June, 1893, 1 ♀.

**Distribution:** Greenland, Western Europe, Moldavia, Turkey and Azerbaijan.

***Temelucha discoidalis* SZEPLIGETI**

Almeria, 25.-30.4.1942, 2 ♂ ♂; Colmenar viseo, 22.6.1986, 1 ♀; Tama, Cantabria, 23.8.1990, 1 ♀, on *Foeniculum vulgare* MILLER.

**Distribution:** Spain, Czech Republic, Hungary, former Yugoslavian countries and Bulgaria.

***Temelucha genalis* SZEPLIGETI**

El Venterillo, Madrid, 1480 m, 1.-10.9.1988, 1 ♂ and 1 ♀; 25.7.-1.8.1988, 1 ♂ and 1 ♀; El Pardo, la Luicera, Madrid, 10.6.1981, 1 ♀; Sierra de Guadarrama, 10.4.1931, 1 ♀; Los Molinas Noicet, 1 ♀; Aiganda Madrid, 5.5.1989, 1 ♂ and 1 ♀; Valsian Segovia, 23.7.1990, 1 ♀.

**Distribution:** Spain, Germany, Slovakia, Italy, Sicily, Hungary, Bulgaria, Moldavia and Turkey.

***Temelucha guttifer* THOMSON**

Villaverde, 10.4.1908, Arias, 1 ♂; El Pardo (El Goloso) Madrid, 1.-8.6.1991, 1 ♀; Sierra de Guadarrama, 21.6.1926, 1 ♀.

**Distribution:** Sweden, Spain, Bulgaria, Rumania, Dagestan and Tunisia.

***Temelucha interruptor* GRAVENHORST**

M. Pujol Madrid, 18.7.1961, 1 ♂; El Eseorial, 23.8.1956, ex *Evetria buoliana* DENN et SCHIFF., 1 ♀.

**Distribution:** Western Europe, Moldavia, Turkey, introduced in North America.

***Temelucha longicauda* sp. nov.**

**Female:** Front wing 4,0 mm, body 6,8 mm, ovipositor sheath 4,3 mm long. Head roundly narrowed behind. Frons rare punctured, mat, raised laterally. Flagellum slender, postannellus 5,3 as long as wide. Face slightly divergent down (28:31), moderately dense punctured. Clypeus rare punctured, convex, with curved front margin. Cheek weakly shorter than base of mandible (7:9).

Thorax and propodeum rather dense and fine punctured, notauli and sternauli weak. Second radius straight. Intercubitus as long as distance from it to second recurrent vein. Outer hind corner of discoidal cell right. Nervulus interstitial, parallel vein reaching postnervulus above middle. Legs slender, hind femur 5,3 as long as wide.

Propodeum moderately long and curved in lateral view. Basal area parallel shaped, areola 1,25 as long as maximal wide, open behind (Fig.4). Median longitudinal carinae weak. Propodeal spiracle closer to pleural carina.

First abdominal segment slightly longer than second tergite. Ovipositor thin, with right and sharp tip and almost invisible dorsal subapical notch.

Black brown; inner eye orbita near antenal base, tegula, coxae apically, second trochanters, front and middle legs except from behind, hind femur apically and hind tibia from above yellow.

Male: Ocelli small. Flagellum 31-segmented, postannellus 4,0 as long as wide. Intercubitus slightly longer than in female. Basal area of propodeum convergent behind. Body black; yellow colouration on the legs not so intensively.

With such a long ovipositor the species is close to *T. caudata* SZEPL., but can be distinguished by restricted behind head, convex clypeus, structure of propodeum, longer first segment, length and colouration of the body.

Holotype: ♀, Spain, Alcala, 12.6.1916, Leg. ? Dusmet, preserved in MNCNM.  
Paratype: 1♂, I. Segena, 10.9.1916, leg. ? Dusmet, in the same museum.

#### ***Temelucha marocator* AUBERT**

Jaen, Mercet, 1♂.

Distribution: Spain and Morocco.

#### ***Temelucha mohelnensis* SEDIVY**

La Mecha Salamanca, 1.5.1989, 1♀.

Distribution: Spain and Middle Europe.

#### ***Temelucha signata* HOLMGREN**

Paracuellos de Jarama (Coll. Dusmet), 1♂.

Distribution: Sweden, Finland, Spain, Denmark, Czech Republic, Austria, Hungary, Bulgaria and Moldavia.

#### ***Temelucha variipes* SZEPLIGETI**

Castrovido, Burgos, 21.8.1991, on *Foeniculum vulgare* MILLER, 1♂; 6.9.1990, 2♀♀; Ribas, 2.5.1901, 1♀; Picasent, Valencia, 12.4.1942, 1♂.

Distribution: Europe, Mallorca Island and Moldavia.

#### ***Eucremastus manni* TSCHKE**

Alcala (Mz. Escalera), 1♀; Escorial, 8.6.1929, 1♀; Gargantua de Lozoya, 10.6.1986, 1♂; Tonelaguna Madrid, 3.6.1986, 1♂.

Distribution: Spain, Italy, Greece, Turkey and Algeria.

### Literature

- HORSTMANN K. (1990): Die westpaläarktischen Arten der Gattung *Pristomerus* CURTIS 1836 (Hymenoptera, Ichneumonidae). — *Entomofauna* 11 (2): 9-44.
- KASPARYAN D. (1981): Opredelitel nasekomich evropeiskoi casti SSSR, III/3: 1-688 [in Russian].
- SEDIVY J. (1970): Westpaläarktische Arten der Gattungen *Dimophora*, *Pristomerus*, *Eucremastus* und *Cremastus* (Hymenoptera, Ichneumonidae). — *Acta Sc. Nat. Acad. Sc. Boh. Brno* 4 (11): 1-38.
- SEDIVY J. (1971): Revision der Europäischen *Temelucha*-Arten (Hymenoptera, Ichneumonidae). — *Acta Sc. Nat. Acad. Sc. Boh. Brno* 5 (1): 1-34.

Address of the author: Dr. Janko KOLAROV,  
Department of Zoology, Biological Faculty, University of Sofia,  
8 Dragan Zankov Boul., 1421 Sofia, Bulgaria.

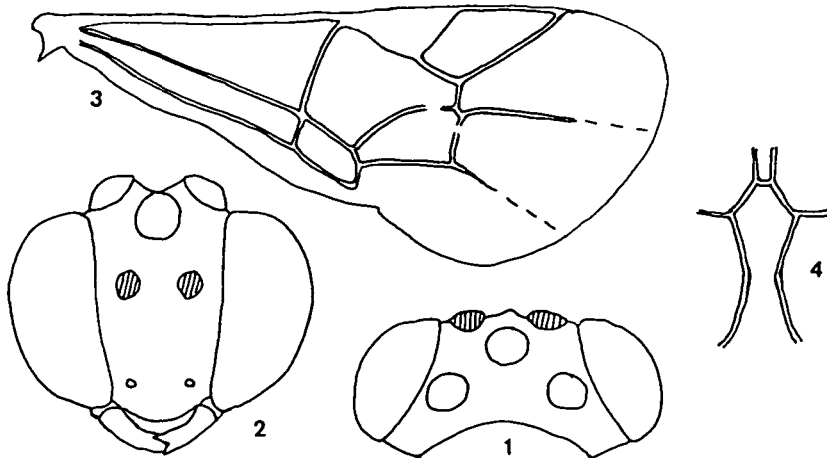


Fig. 1-3: *Cremastus brevigentalis* sp. nov. 1: head from above; 2: head in front; 3: front wing.  
Fig. 4: *Temelucha longicauda* sp. nov. - areolation of propodeum.

# ZOBODAT - [www.zobodat.at](http://www.zobodat.at)

Zoologisch-Botanische Datenbank/Zoological-Botanical Database

Digitale Literatur/Digital Literature

Zeitschrift/Journal: [Linzer biologische Beiträge](#)

Jahr/Year: 1996

Band/Volume: [0028\\_2](#)

Autor(en)/Author(s): Kolarov Janko Angelov

Artikel/Article: [A study of the Spanish Cremastinae \(Hymenoptera, Ichneumonidae\). 821-827](#)