

Linzer biol. Beitr.	34/1	297-298	30.8.2002
---------------------	------	---------	-----------

A new species of *Amarochara* THOMSON from the Himalayas (Coleoptera: Staphylinidae, Aleocharinae, Oxypodini)

V. ASSING

A b s t r a c t : *Amarochara sequax* sp. n. from Nepal, the 26th representative of the genus in the Holarctic region, is described, figured, and distinguished from similar congeners.

Key words : Coleoptera, Staphylinidae, Aleocharinae, *Amarochara*, Palaearctic region, Nepal, taxonomy, new species.

Introduction

According to a comprehensive recent revision, 25 valid species of the oxypodine genus *Amarochara* THOMSON occur in the Holarctic region (ASSING in press). Material from Nepal collected and made available to me by Gunnar Hirthe, Rostock, only a short time after the submission of the revision contained a male of a new *Amarochara* species, which is described below.

***Amarochara sequax* sp. n. (Figs. 1-2)**

H o l o t y p e ♂: NEPAL, Manaslu Region, Marsyangdi Khola GTal, Ostseite oberhalb Besi Sahar, 1500m, 31.3.1999, leg. G. Hirthe / Holotypus ♂ *Amarochara sequax* sp. n. det. V. Assing 2001 (Staatliche Naturhistorische Sammlungen Dresden).

D e s c r i p t i o n : 3.4 mm. Externally indistinguishable from *A. loebli* PACE.

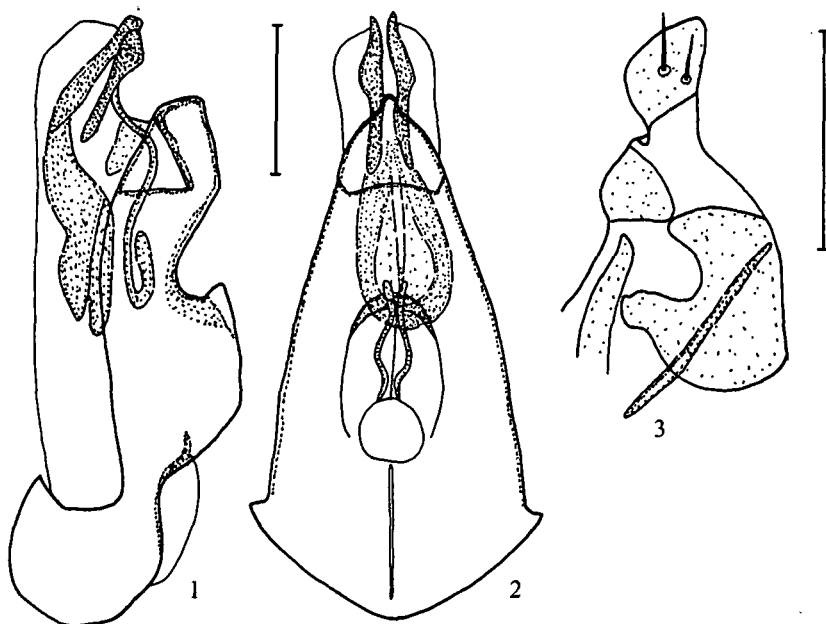
♂: posterior margin of tergum VIII weakly convex and with row of relatively short marginal setae; sternum VIII posteriorly strongly convex, almost pointed, and with dense row of very thin yellowish setae; aedeagus of highly distinctive morphology: basal part of median lobe in lateral view distinctly excavate and with pronounced crista proximalis, at base of ventral process with short tooth-like process (lateral view), apex of ventral process in lateral view obliquely truncate and in ventral view keeled, internal structures distinctive (Figs. 1-2); paramere as in *A. loebli* strongly modified, apical lobe flattened, transverse, and apically truncate (Fig. 3).

D e r i v a t i o n o m i n i s: The name (Lat., adj.: quickly following, pursuing) refers to the fact that the species was made available to me only just after the first part of the revision had been submitted.

Comparative notes and phylogenetics: Based on external characters alone, this species is difficult to distinguish from *A. loebli* (see description above). The morphology of the aedeagus, however, is highly distinctive and separates this species from all known

congeners. The similarly highly derived morphology of the median lobe of the aedeagus and of the paramera suggest that *A. sequax* is the adelphotaxon of *A. loebli* + *A. armata* ASSING (see ASSING in press).

Distribution and bionomics: The species is known only from the type locality in central Nepal, where it was collected at an altitude of only 1500 m.



Figs. 1-3: *Amarochara sequax* sp. n.: 1, 2 – median lobe of aedeagus in lateral and in ventral view; 3 – apical lobe of paramere. Scales: 0.1 mm.

Zusammenfassung

Amarochara sequax sp. n., die 26. Art der Gattung in der Holarktis, wird aus Nepal beschrieben und von ähnlichen *Amarochara*-Arten unterschieden; die männlichen Sexualmerkmale werden abgebildet.

Reference

ASSING V. (in press): A taxonomic and phylogenetic revision of *Amarochara* THOMSON. I. The species of the Holarctic region (Coleoptera: Staphylinidae, Aleocharinae, Oxypodini). — Beitr. Ent., Keltern 52 (2002).

Author's address:

Volker ASSING
Gabelsbergerstr. 2
D-30163 Hannover, Germany
e-mail: vassing.hann@t-online.de

ZOBODAT - www.zobodat.at

Zoologisch-Botanische Datenbank/Zoological-Botanical Database

Digitale Literatur/Digital Literature

Zeitschrift/Journal: [Linzer biologische Beiträge](#)

Jahr/Year: 2002

Band/Volume: [0034_1](#)

Autor(en)/Author(s): Assing Volker

Artikel/Article: [A new species of *Amarochara* THOMSON from the Himalayas \(Coleoptera: Staphylinidae, Aleocharinae, Oxypodini\) 297-298](#)