

Linzer biol. Beitr.	55/1	351-354	August 2023
---------------------	------	---------	-------------

***Botanophila biclavata*, a new species of Anthomyiidae (Brachycera, Diptera) from Austria**

Gerhard SCHLÜSSLMAYR

A b s t r a c t : A new species of Anthomyiidae, *Botanophila biclavata* nov.sp. from Tyrol, Austria, is described and illustrated.

K e y w o r d s : Anthomyiidae, root-maggot flies, *Botanophila*, Tyrol, Austria.

Introduction

During an excursion made by the author on the Kitzbüheler Horn (Northern Tyrol) in August 2022 two male specimens of a previously undescribed *Botanophila* species were captured on high-alpine peak-grassland.

Material and methods

The flies were caught with net, pinned and dried. The genitals were dissected and stored in glycerin after examination.

The abbreviations in the text:

setae: ac = acrostichal, ad = anterodorsal, av = anteroventral, dc = dorsocentral, pd = posterodorsal, pv = posteroventral; ta = proximal crossvein in the wing.

***Botanophila biclavata* nov.sp. (Figs1-5)**

T y p e m a t e r i a l : Holotype ♂, AUSTRIA: Tyrol, Kitzbüheler Horn, peak, 1996 m a.s.l., 47.47N/12.42E, 1.8.2022, leg. & det. G. Schlüsslmayr, coll. Biology Centre Linz. Paratype ♂: same locality and date as for holotype, coll. NHM Vienna.

D e s c r i p t i o n

M a l e : Body length: 6,5 mm, wing length: 6.3 mm.

Head: Ground color black with greyish-silver tomentum. Eyes very sparse and short haired. Narrowest distance between eye margins as wide as anterior ocellus, frontal vitta narrow, but continuous, frontal widening anteriorly red (in paratype black). Parafrontalia slightly narrower than postpedicel, genae as wide as postpedicel in profile. Frontal setae in 6 pairs, 1 pair of long interfrontals. Genal setae in one row. Antenna black, arista short pinnate, hairs 2-3x as long as its basal diameter, postpedicel 1,6x as long as wide. Palpi

black, proboscis half head height, prementum pruinose, not shiny. Mouth and forehead at the same level in profile.

Thorax: Ground color black with dark grey tomentum, with 3 black stripes, distinct only presutural. 3 presutural ac, the longest half as long as presutural dc. dc 2+3, intraalar setae 0+2, notopleuron without additional hairs, prealar seta as long as posterior notopleural seta. Katepisternum with 2+2 setae. Color of scutellum like scutum, with 2 pairs of setae and 1 pair on the surface.

Wing: Base, front part of wing and veins distinctly yellow. Calypters intense yellow, halter and basicosta yellow. Costal spine longer than ta.

Legs: Entirely black; fore tibia with a long pv and 1-2 ad, middle tibia with 1 ad, 2 pd and 3 av, hind tibia with 5 ad, 4 pd (distal seta almost as long as metatars 3) and 4 av. Femur 1-3 with complete rows of strong av and pv, hind femur with long irregularly arranged ad-setae. Claws and pulvilli as long as tarsomere 5.

Abdomen: Like scutum, but with black middle line, tergite VI bare.

Biology: *Botanophila biclavata* occurs on a high-alpine peak-grassland of Kitzbüheler Horn (1996m) together with the Anthomyiids *Anthomyia mimetica*, *A. pluvialis*, *Botanophila sericea*, *B. varicolor*, *Delia florilega*, *D. lophota*, *D. platura*, *Eutrichota paratunicata*, *E. triticiperda*, *Heterostylodes pratensis*, *Hylemya variata*, *Paregle coerulescens*, *Pegoplata aestiva*, *P. infirma* and *Phorbia fumigata*. The recently described *Delia altophila* is not rare on the northern side of the mountain at an altitude of 1700 m.

Etymology: clavatus = club-shaped, *biclavata* because of the two club-shaped processes of the cercal plate, which resemble the clubmoss *Lycopodium clavatum*. The name *Botanophila clavata* is already occupied by Hennig.

Female: unknown.

Acknowledgement

I thank Verner Michelsen (Copenhagen) for the confirmation of the novelty of this species.

Zusammenfassung

Eine neue Art der Anthomyiidae (Diptera, Brachycera), *Botanophila biclavata* wird beschrieben und mit mehreren Abbildungen vorgestellt.

Literature

HENNIG W. (1976): Anthomyiidae. — In: LINDNER E. (ed.), Die Fliegen der paläarktischen Region. Schweizerbart, Stuttgart 7(1)63a: i-ixx, 1-974, i-cxiv.

Author's address: Gerhard SCHLÜSSLMAYR
Malfattgasse 19, Top 32-34
A-1120 Wien, Österreich
E-mail: g.schuesslmayr@gmail.com

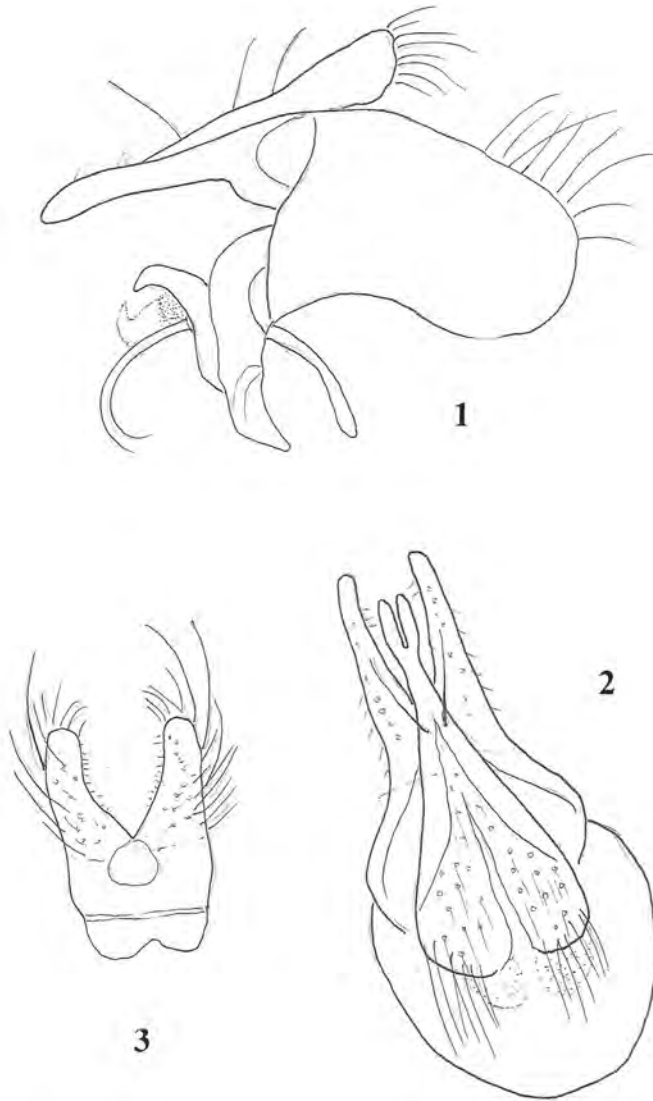


Fig. 1: *Botanophila biclavata* nov.sp. (male). (1) terminalia in lateral view, (2) cercal plate and surstyli in rear view, (3) sternite V.



Figs 2-5: (2-3) *Botanophila biclavata* nov.sp. (male); (4) *Botanophila biclavata* nov. sp., inner male genitalia; (5) *Botanophila biclavata*, nov.sp. (male), epandrium, cercal plate and surstyli, rear view.

ZOBODAT - www.zobodat.at

Zoologisch-Botanische Datenbank/Zoological-Botanical Database

Digitale Literatur/Digital Literature

Zeitschrift/Journal: [Linzer biologische Beiträge](#)

Jahr/Year: 2023

Band/Volume: [0055_1](#)

Autor(en)/Author(s): Schlüsslmayr Gerhard

Artikel/Article: [Botanophila biclavata, a new species of Anthomyiidae \(Brachycera, Diptera\) from Austria 351-354](#)