

Phyton (Horn, Austria)	Vol. 37	Fasc. 1	141-149	10. 9. 1997
------------------------	---------	---------	---------	-------------

Investigations of Ammonia Stressed Scots Pine Trees (*Pinus sylvestris* L.) with Computed Tomography in an Immission Area Around a Cattle Farm

By

Ralf KÄTZEL*) , Hans-Werner RIDDER**) and Adolf HABERMEHL**)

With 1 Figure

Received, Dezember 12, 1996

Key words: Ammonia, stress, computed tomography, *Pinus sylvestris* L.

Summary

KÄTZEL R., RIDDER H.-W. & HABERMEHL A. 1997. Investigations of Ammonia Stressed Scots Pine Trees (*Pinus sylvestris* L.) with Computed Tomography in an Immission Area Around a Cattle Farm. – *Phyton* (Horn, Austria). 37 (1): 141-149, 1 figure. – English with German summary.

The sapwood-heartwood ratio of middelaged Scots pines, taken from three differently nitrogen polluted sites, was examined by means of computed tomography. The result was, that the examined pines in immediate vicinity of the ammonia emitent possess a lower sapwood-heartwood ratio. The moisture of the sapwood of trees located near a cattle farm was significantly reduced. Possible reasons for the accelerated aging processes are discussed.

Zusammenfassung

KÄTZEL R., RIDDER H.-W. & HABERMEHL A. 1997. Computertomografische Untersuchungen an stickstoffbelasteten Kiefern (*Pinus sylvestris* L.) im Eintragsgebiet einer Rindermastanlage. – *Phyton* (Horn, Austria). 37 (1): 141-149, 1 Abbildung. – Englisch mit deutscher Zusammenfassung.

Im Frühherbst 1994 durchgeführte computertomografische Untersuchungen im Stammbereich von 28 mittelalten Kiefern aus jeweils drei unterschiedlich stick-

*) R. KÄTZEL, Forest Research Institute Eberswalde, A.-Möller Str. 1, 16225 Eberswalde, Germany.

**) H.-W. RIDDER, A. HABERMEHL, Center of Radiology, Philipps University, Bahnhofstr. 7, 35033 Marburg, Germany.

stoffbelasteten Baumkollektiven zeigen, daß die untersuchten Kiefern in unmittelbarer Nähe des NH_3 -Emittenten einen höheren Verkernungsgrad und damit einen verminderten Splintflächenanteil aufweisen. Die Holzfeuchte des Splintes der emittentennahen Bäume war signifikant vermindert. Mögliche Ursachen für die beschleunigten Szeneszenzprozesse werden diskutiert.

Introduction

Over the last two decades, nitrogen inputs in pine forest ecosystems have clearly increased in the North Eastern lowland of Germany by locally very different input intensities. Some pine stands are strongly influenced and partially damaged by vast grounds of livestock farms (MOHR 1990, HEINSDORF 1993, KÄTZEL & al. 1995).

During several years treephysiological investigations were carried out in middle aged pine stands near a big cattle farm. They emphasize changes in the energetic, carbohydrate, aminoacid and phenol metabolisms of the needles up to a distance of 1000 meters from the emittent (KÄTZEL & LÖFFLER 1995b).

In our state of knowledge the detoxification of the ammonia penetrating the needles is connected with an increased synthesis of carbohydrates. Therefore the processes of photosynthesis, including the synthesis of chlorophyll, is activated. Through the longer opened stomata the transpiration rate increases. Subsequently water stress may appear and the penetration of more ammonia is possible (VAN HOVE & al. 1991).

The increasingly formed carbohydrates react with the ammoniacs to aminoacids (f.e. arginine) (WEBER & al. 1995). If the binding capacity of the available C-skeletons isn't sufficient (f. e. because of a shortage of water, a reduced photosynthesis) carbohydrates from other metabolic pathways are redirected. In the consequence the biomass production (KNAPP 1990), the defence capacity (KÄTZEL & LÖFFLER 1995a), the rate of mycorrhizal (JANSEN 1987, RITTER 1990, VAN DER EERDEN & al. 1991), and the frost hardness (PIETILÄ & al. 1991) are reduced.

By means of computed tomographic measurements this paper pursues the question if the primary effects in the needles cause long-termed changes in the structure of the trunks with concern especially to the sapwood-heartwood ratio.

Material and Methods

Investigation area

28 trees out of three differently stressed pure pine stands (investigation sites 1, 2 and 3) located inside a 3 km long transect in south – southeast direction of a large cattle farm (24 000 cattles) (forest district Torgelow, county Mecklenburg-Vorpommern, Germany) were tomographed during September 1993 and 1994. Trees with a

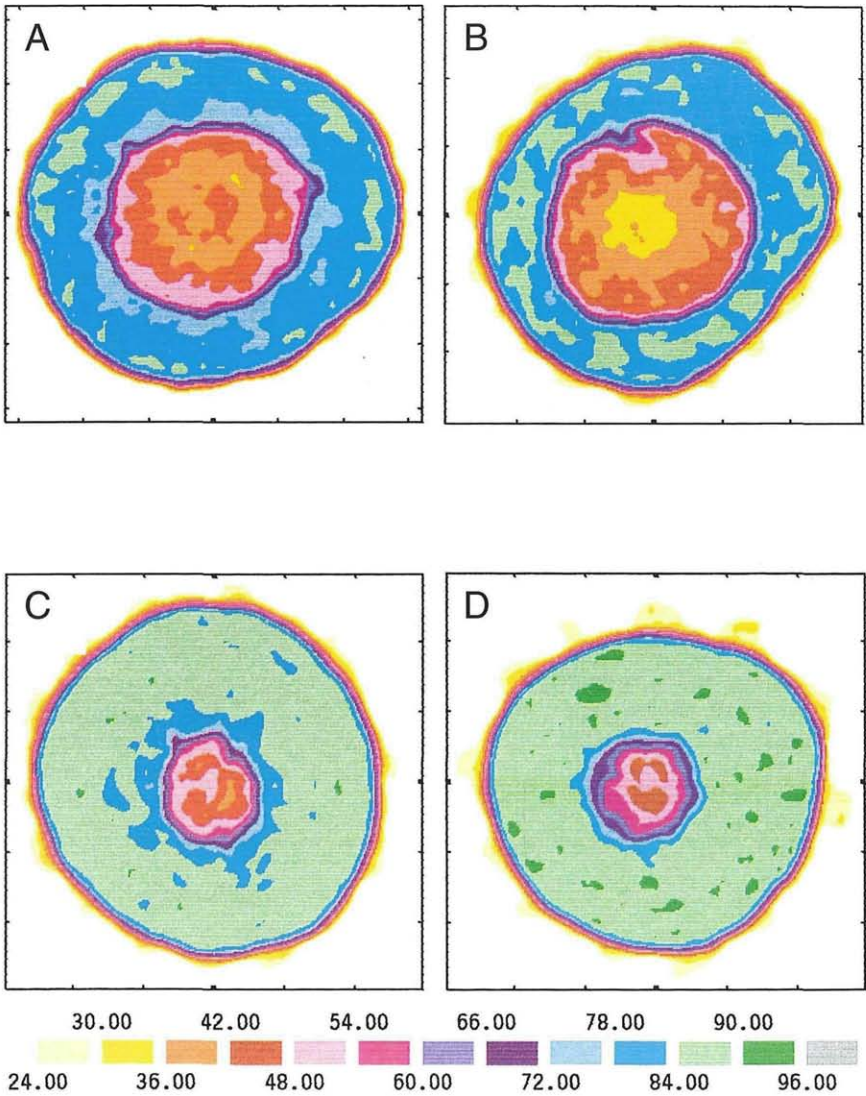


Fig. 1 a–d. Tomograms of the Scots pine 3 (investigation site 1, [a]), of the tree 8 (investigation site 2, [b]) and the trees 2 [c] and 8 [d], both from the investigation site 3 (tomographed on 30.09.94, in a stem height of 100 cm).

The scale of colours shown below documents the distribution of moisture content corresponding to the CT numbers (30 = dry → 96 = high moisture).

Table 1
Parameter of the investigation sites in 1994
(*average of the stand)

Number of the investigation plot	Age of the trees (years)	distance to the emittent (m)	DBH 1,3* (cm)	number of tomographed trees
1	73	200	28,0	8
2	73	280	29,5	10
3	75	2900	23,5	10

Table 2

Relations of wood type of Scots pine with the absorption coefficient and the colour scale of tomogramms.

Typ of wood	CT number (10^{-3} cm^{-1})	Colour scale of tomograms
sapwood	72-93	light blue – dark green
outer hardwood	54-72	dark red – violett
inner hardwood	36-54	light yellow ochre – light red
dry decayed regions, bark	24-36	light yellow – dark yellow
hollow spaces	< 24	white

Table 3

Average area of sapwood and heartwood of pines in different distances to the cattle farm (s = standard deviation of mean)

Investigation site	Cross section of the stems (total) cm^2	Sapwood area cm^2	Percentage of sapwood area %	Heartwood area cm^2
1	624 (s = 251)	372 (s = 1321)	53,8 (s = 12,7)	252 (s = 178)
2	745 (s = 263)	487 (s = 210)	57,8 (s = 8,2)	258 (s = 105)
3	513 (s = 153)	393 (s = 111)	77,0 (s = 8,0)	124 (s = 63)

Table 4

Average CT-numbers (10^{-3} cm^{-1}) as a measure of wood moisture contents of wood in pine stands, which are differently far off the cattle farm

Investigation site	Moisture of wood (total) CT-number	Moisture of sapwood CT-number	Moisture of heartwood CT-number
1	67 (s = 4)	81 (s = 2)	50 (s = 3)
2	69 (s = 3)	81 (s = 1)	51 (s = 4)
3	74 (s = 5)	86 (s = 2)	53 (s = 2)

Table 5

Ratio of sapwood and heartwood area and the "qualified proportion of sapwood" in the stem of three different pine stands in different distances to the cattle farm

Investigation site	Ratio of sapwood and heartwood area	"Qualified proportion of sapwood" (absolut)*	"Qualified proportion of sapwood" (relative)**
1	1,5 (s = 1)	300,6 (s = 103,4)	43,6 (s = 9,8)
2	1,9 (s = 1)	395,5 (s = 172,9)	46,9 (s = 6,1)
3	3,2 (s = 2)	333,1 (s = 91,0)	57,8 (s = 7,7)

*absolut sapwood area x CT-number / 100

**percentage of sapwood area x CT-number / 100

comparable social status to be tomographed were selected from three stands having the same average diameters. The stands grow on uniform moderate moist soil with average nutrient supplied site quality (class Z2M).

Computed Tomography

The computed tomography (CT) is used for 15 years for non destructive examination of living trees. A mobile equipment measures the absorption of gamma rays within a thin layer of the trunk and computes the local distribution of absorption coefficients. The computed two dimensional matrix of absorption values (CT numbers), the tomogram, can be visualized by colour coding. The tomogram shows the extension of the water conducting sapwood area and the dry heartwood. It allows an indirect determination of the moisture content within different regions of the examined layer by means of the CT values (HABERMEHL & al.1986). Sections with CT values between 72 and 93 are here considered as sapwood (Table 2).

For the investigations described here the mobile tomograph MCT-3, constructed by the university of Marburg/Germany, was used. It contains 12.95 Gbq of the radionuclide Cs-137 (quantum energy 662 keV) as the source of the gamma radiation. The absorption of the rays penetrating the tree is measured by three detectors consisting of NaJ scintillation crystals and photomultipliers. With this equipment trees with diameters up to 72 cm can be examined (HABERMEHL & RIDDER 1992).

Investigated were: the total cross section of the stems, the area of sapwood and heartwood, percentage of the sapwood, the CT-numbers of sapwood and heartwood as relative measure of the moisture content and the relative and absolute "qualified proportion of sapwood" (NAUMANN & al. 1995).

Results

Sizes of sapwood and heartwood regions

Although the three examined stands are nearly of the same age, the trees far away from the emittent show the smallest cross section of the stem. This was expected by the measured diameters of the stems. The pines of the investigation plot 2 possess the largest cross sections of the stems and the largest sapwood areas. Also the heartwood areas of trees within the sites 1 and 2 are about 130-140 cm² larger than those located on the more distant investigation area 3.

The percentage of the sapwood is largest (67,5%) for less nitrogen polluted trees. The differences of the ratio of sapwood to heartwood area are remarkable. Whereas the pines far away from the emittent (investigation site 3) possess a sapwood area four times larger than heartwood area, those on sites near the cattle farm (investigation site 1) have their sapwood area only twice as large as the heartwood area (Table 5). The differences are significant (multiple t-test; $\alpha = 0,05$).

Absorption coefficients

The absorption coefficients (CT-numbers) as measured by CT are proportional to the physical density of the object. Applied to trees with comparable density of wood the CT-numbers are a relative measure of the moisture content (GRUBER 1995). The total moisture content of wood (amount of moisture of sap- and heartwood) of the examined trees near the cattle farm is significantly reduced compared to the less stressed trees, which is caused both by reduced sapwood and heartwood moisture contents (TUKEY-test, Table 4).

The multiplication of the percentage of sapwood area and its CT-number is a relative measure of moisture contents ("qualified proportion of sapwood", modified by KUCERA & BOSCHARD 1993), which allows a valuation of the water transport capacity. This parameter increases with the increasing distance from the cattle farm (Table 3). On site 1 located near the emittent this "qualified proportion of sapwood" comes up to only 75,5 % of the value of site 3.

Discussion

As previous examinations demonstrate the ammonia emissions from the cattle farm during more than twenty years affect the growth and the

vitality of the adjoining trees. CIR-aerial photographs show that accelerated ageing takes place years earlier than decline processes start.

The trees in investigation site 3 differ significantly from those in plots 1 and 2 concerning the area of heartwood, the sapwood moisture, and the total moisture content (multiple t-test). The last two differences are significant even with the TUKEY-test.

Whereas the increased stem diameters and cross-sections of the trees near the emittent can be explained by the earlier supporting effect of the nitrogen emissions, the diminished ratios of sapwood to heartwood area refer to the early beginning of aging processes. The ratio between sapwood and heartwood areas of nitrogen stressed trees is only half as large as that of the pines in the investigation point 3 (Table 5). A reduction of sapwood area causing an accelerated aging of wood of spruces and pines in connection with air pollutants (e.g. SO_2) is described by various authors (HAPLA 1986a; HAPLA & al. 1987, SCHNELL & al. 1987).

As trees near the emittent (investigation sites 1 and 2) have not only a reduced sapwood area for water conduction but also a reduced moisture content, a significant smaller absolute water content inside the sapwood as well as inside the the heartwood can be assumed compared with the pines of the investigation area 3. HAPLA 1986b found in the heartwood of differently damaged pines no significant differences of moisture contents, which is in contrast to our results presented here. A decrease of moisture contents of the sapwood and the percentage of sapwood with increasing forest decline class of damaged spruces (Decline class 2 and 3) was observed frequently (SAUR & al. 1986, FRÜHWALD & al. 1984, ASZMUTAT & KNIGGE 1987).

GRUBER 1995 found strong correlations between the sapwood areas and the needle mass of the crown. Equally the moisture contents of wood in connection with the flow velocity is an indirect measure of the water supply of the needles (LÜTTSCHWAGER 1991). If the water supply were more and more reduced, the total transpiration surface of the crown might be diminished by an increasing loss of needles or a yearly decrease of needle surface. Symptoms like that were observed only occasionally in the investigation area. As the detoxification reactions cause a higher water demand (increasing photosynthesis- and transpiration rate), future investigations have to prove, if flow velocity in xylem and the water potential increases with higher ammonia concentration.

Results presented here arise the question, which sequences of reactions inside the trees accelerate the development of heartwood caused by nitrogen emissions. Two interconnected processes may be involved in this:

The process developing heartwood begins with dying of the interior parenchymatic cells which is linked with the loss of a water transport function and the storage of assimilates. Trigger for the development of

heartwood is on one side insufficient supply of the xylem cells with water. The conductivity loss of xylem cells is the consequence (HUBER 1956). Though only insufficiently examined till now, ammonia immissions can cause or amplify water demand under certain circumstances (for instance through longer opened stomata) (VAN HOVE & al. 1991). At the same time high nitrogen influx causes secondary effects e.g. dense *Calamagrostis* grass or reductions of fine roots which affect the water uptake. In particular, during periods of water deficit in xylem the vulnerability to embolism is increased and can accelerate the development of heartwood.

On the other side the efficiency of the sapwood is strongly connected with the ability to assimilate carbon by needles. The parenchymatic cells of the stem are supplied with carbohydrates for the processes of respiration and storage. Because a large part of the sugar compounds enters into synthesis of amino acids, the parenchymatic cells located at the utmost part within the sapwood are only insufficiently supplied with high energetic assimilates, which causes them to die.

As the first available examinations confirm those unfavourable factors for growth of trees (air pollution, nutrient poor soils, suppressed social position, dry weather periods etc.) promote the development of heartwood in the stem, which decreases the sapwood area (RADEMACHER & al. 1986, SCHNELL & al. 1987). Therefore the survival prognosis may be deteriorated.

As the aging of wood (and so of the tree itself) can be noticed especially by the change of sapwood-heartwood ratio the computed tomography offers the possibility to destine these processes inside the living tree without destruction. In connection with organic, anorganic, and biophysical analysis of needles and crown appearance a more secure diagnosis is possible. Whether it is possible to conclude from sapwood percentage on to the biological (not annual) age of pines is up to future investigations.

Acknowledgements

We thank Mrs. M. NAU for assistance during the CT measurements and Mr. J. BLATTNER for assistance in translation.

References

- ASZMUTAT H. & KNIGGE W. 1987. Auswirkungen von Immissionsbelastungen auf einige Eigenschaften des Holzes der Fichte (*Picea abies* (L.) Karst.). – Forstarchiv. 58: 29–35.
- FRÜHWALD A., BAUCH J. & GÖTTSCHE-KÜHN H. 1984. Holzeigenschaften von Fichten aus Waldschadensgebieten. Untersuchungen an frisch gefällttem Holz. – Holz Roh-Werkstoff 42: 441–449.
- GRUBER F. 1995. Splintermittlung und Splint-Nadelmasse-Beziehungen. – AFZ 15: 807–808.

- HABERMEHL A. & RIDDER H.-W. 1992. Computer-Tomographie am Baum I, Erkennen der Baumfäule und Gerätekonzept. – Materialprüfung 34: 325–329.
- , — & SCHMIDT S. 1986. Mobiles Computer-Tomographie – Gerät zur Untersuchung ortsfester Objekte. – Kerntechnik 48: 94–99.
- HAPLA F. 1986a. Splint- und Kernanteile an Kiefern unterschiedlicher Immissions-schadstufen. – Holz Roh-Werkstoff 44: 361.
- 1986b. Holzfeuchtigkeit von Kiefern unterschiedlicher Immissions-schadstufen. – Holz Roh-Werkstoff 44: 432.
- , KNIGGE W. & ROMMERSKIRCHEN A. 1987. Physikalische Holzeigenschaften und Zuwachs von schadsymptomfreien und immissionsgeschädigten Kiefern. – Forstarchiv 58: 211–216.
- HEINSDORF D. 1993. The role of nitrogen in declining Scots pine forests (*Pinus sylvestris*) in the lowland of east Germany. – Water, Air, and Soil Pollution 69: 21–35.
- HUBER B. 1956. Die Saftströme der Pflanzen. – Springer-Verlag, Berlin, Göttingen, Heidelberg.
- JANSEN A. E. 1987. The influence of acid rain on mycorrhizal fungi and mycorrhizas of Douglas fir (*Pseudotsuga menziesii*) in the Netherlands. – In: MATHY P. (ed.), Air Pollution and Ecosystems. Proc. Int. Symp., Grenoble, France, 18–22.5.1987, Dordrecht: Reidel: 859–863.
- KÄTZEL R. & LÖFFLER S. 1995a. Untersuchungen zur Erholung von Kiefernbeständen im ehemaligen Stickstoffeintragsgebiet Lichterfelde/Britz: 2. Teil: Vitalität der Kiefern nach physiologischen und biochemischen Parametern. – Beiträge für Forstwirtschaft und Landschaftsökologie, Berlin, 29 (2): 89–93.
- & — 1995b. Ökophysiologische Untersuchungen zum Einfluß von Ammoniakimmissionen auf Kiefernbestände (*Pinus sylvestris* L.) im Forstrevier Grünhof (FA Torgelow, Mecklenburg-Vorpommern). – Forschungsbericht der Forstlichen Forschungsanstalt Eberswalde e.V. im Auftrag des MELF Mecklenburg-Vorpommern.
- , EINERT P., PATZ G., RITTER G. & STROHBACH B. 1995. Untersuchungen zur Erholung von Kiefernbeständen im ehemaligen Stickstoffeintragsgebiet Lichterfelde/Britz: 1. Teil: Luftqualität, Bodenzustand, Vegetation und Ernährungsstatus der Kiefernbestände. – Beiträge für Forstwirtschaft und Landschaftsökologie, Berlin, 29 (1): 5–9.
- KNAPP E. 1990. Methodische, holzkundliche und ertragskundliche Untersuchungen zur Erfassung der Zuwachsverluste in NH_3 -geschädigten älteren Kiefernbeständen des nordostdeutschen Tieflands. – In: BERGMANN H., Rekonstruktion immissionsgeschädigter Bestände von Kiefer im Tiefland und Fichte im Harz und Thüriger Wald. – Forschungsbericht der Forstlichen Forschungsanstalt Eberswalde A4/EZ 094.
- KUCERA L. J. & BOSSHARD H. H. 1990. Holzeigenschaften geschädigter Fichten. – ecomed-Verlag, Landsberg am Lech.
- LÜTTSCHWAGER D. 1991. Methodische Untersuchungen zu Kenngröße des Wasserhaushalts im Stammholz der Kiefer (*Pinus sylvestris*). – Beitr. Forstwirtschaft 2: 144–146.
- MOHR H. 1990. Der Stickstoff ein kritisches Element der Biosphäre. Sitzungsberichte der Heidelberger Akademie der Wissenschaften: Mathematisch-naturwissenschaftliche Klasse, 5. Abhandlung. – Springer Verlag Berlin, Heidelberg.

- NAUMANN A., HABERMEHL A., RIDDER H.-W. & KÄTZEL R. 1995. Computertomografische Untersuchungen zur Wasserversorgung geharzter Kiefern. – Beiträge für Forstwirtschaft und Landschaftsökologie, Berlin, 29/1: 17–26.
- PIETILÄ M., LAHDESMÄKI P., PIETILAINEN P., FERM. A., HYTONEN J. & PATILA A. 1991. High nitrogen deposition causes changes in amino acid concentrations and protein spectra in needles of the Scots pine (*Pinus sylvestris*). – Environ. Pollut. 72: 103–115.
- RADEMACHER P., BAUCH J. & PULS J. 1986. Biological and chemical investigations of the wood from pollution-affected spruce (*Picea abies* (L.) Karst.). – Holzforschung 40: 331–338.
- RITTER G. 1990. Zur Wirkung von Stickstoffeinträgen auf Feinwurzelsystem und Mykorrhizabildung in Kiefernbeständen. – Beiträge für die Forstwirtschaft 24, 100–103.
- SAUR I., SEEHANN G. & LIESE W. 1986. Zur Verblauung von Fichtenholz aus Waldschadensgebieten. – Holz Roh-Werkstoff 44: 329–3–32.
- SCHNELL G. R., ARNOLD M. & SELL J. 1987. Der Wasserhaushalt unterschiedlich vitaler Fichten und Tannen. – Schweiz. Z. Forstwes. 138/ 11: 963–992.
- VAN DER EERDEN L. J. M., DUECK T. A., BERDOWSKI J. J. M., GREVEN H. & VAN DOBBEN H. F. 1991. Influence of NH_3 and $(\text{NH}_4)_2\text{SO}_4$ on heathland vegetation. – Acta Bot. Neerl. 40: 281–297.
- VAN HOVE L. W. A., VAN KOOTEN O., VAN WIJK K. J., VREDENBERG W. J., ADEMA E. H. & PIETERS G. A. 1991. Physiological effects of long term exposure to low concentrations of SO_2 and NH_3 on poplar leaves. – Physiol. Plant. 82: 32–40.
- WEBER P., SCHNEIDER S., STOERMER H., GEBLER A., v. SENGBUSCH D., HANEMANN U. & RENNENBERG H. 1995. Charakterisierung des Stickstoffhaushaltes der Fichten auf den ARINUS-Flächen. – 2. Zwischenbericht zum Projekt Europäisches Forschungszentrum für Luftreinhaltung (PEF), PEF-Forschungsberichte, Karlsruhe.

ZOBODAT - www.zobodat.at

Zoologisch-Botanische Datenbank/Zoological-Botanical Database

Digitale Literatur/Digital Literature

Zeitschrift/Journal: [Phyton, Annales Rei Botanicae, Horn](#)

Jahr/Year: 1997

Band/Volume: [37_1](#)

Autor(en)/Author(s): Krätzel Ralf, Ridder Hans-Werner, Habermehl Adolf

Artikel/Article: [Investigations of Ammonia Stressed Scots Pine Trees \(Pinus sylvestris L.\) with Computed Tomography in an Immission Area Around a Cattle Farm. 141-149](#)