

# Notes on *Cristatopalpus olivens* BETHUNE-BAKER, 1908 (Lepidoptera: Noctuidae: Herminiinae)

## M. Lödl

### Abstract

*Cristatopalpus olivens* BETHUNE-BAKER, 1908, the type-species of the genus *Cristatopalpus* BETHUNE-BAKER, 1908, is redescribed, the male lectotype is designated and illustrated. The genus is placed in a monophyletic group of genera near *Idia* HÜBNER, [1813].

### Zusammenfassung

*Cristatopalpus olivens* BETHUNE-BAKER, 1908, die Typusart von *Cristatopalpus* BETHUNE-BAKER, 1908, wird wiederbeschrieben, der männliche Lectotypus designiert und abgebildet. Die Gattung wird in eine monophyletische Gruppe von Gattungen in der Nähe von *Idia* HÜBNER, [1813] gestellt.

**Key words:** Australian region, *Cristatopalpus* BETHUNE-BAKER, 1908, Herminiinae, *Idia* HÜBNER, [1813], New Guinea, Noctuidae, redescription.

The description of the genus *Cristatopalpus* BETHUNE-BAKER, 1908 was based on the type-species *Cristatopalpus olivens* BETHUNE-BAKER, 1908 from New Guinea. *C. olivens* is redescribed, the male lectotype is designated and illustrated. Due to characters of the male genitalia the genus is placed in a monophyletic group of genera near the genus *Idia* HÜBNER, [1813].

### Abbreviations (according to LÖDL 1993a and 1993b):

II	2nd joint of labial palpus	BMNH	The Natural History Museum (=British Museum), London	Q3	postmedial line
III	last joint of labial palpus			RM	orbicular spot
acb	width of aedeagus			SF	dots along outer margin
aed	aedeagus	hm	distance vinculum -	Ta 1 - 5	tarsus 1 - 5
acl	length of aedeagus		uncus base	ub	width of uncus
b	width of forewing	l	length of forewing	ul	length of uncus
		NM	reniform spot	vb	width of valve
		Q2	antemedial line	vl	length of valve

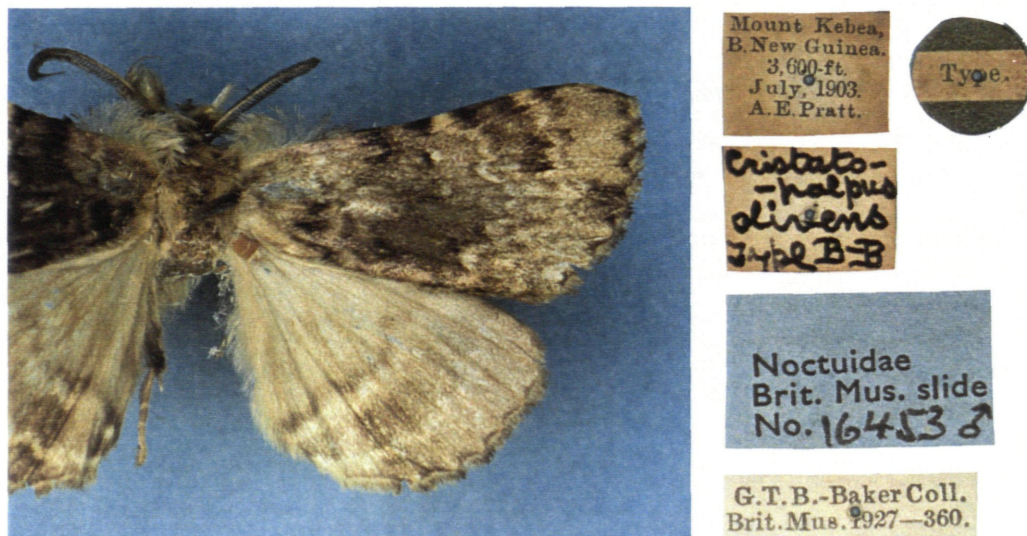


Fig. 1: *Cristatopalpus olivens* BETHUNE-BAKER, 1908. ♂-Lectotype.

### *Cristatopalpus olivens* BETHUNE-BAKER, 1908

(Figs. 1-7)

*Cristatopalpus olivens* BETHUNE-BAKER, 1908: 210.

#### Examined type material:

**Lectotype** (by present designation): ♂ "Type \ Mount Kebea, B. New Guinea, 3,600-ft. July, 1903. A.E. Pratt. Cristato- palpus olivens Type B-B \ G.T.B.-Baker Coll. Brit. Mus. 1927-360. \ Noctuidae Brit. Mus. slide No. 16453 ♂" (BMNH) (Fig. 1). Only this specimen was found in the BMNH although in the original description one further specimen (Dinawa, September) is cited.

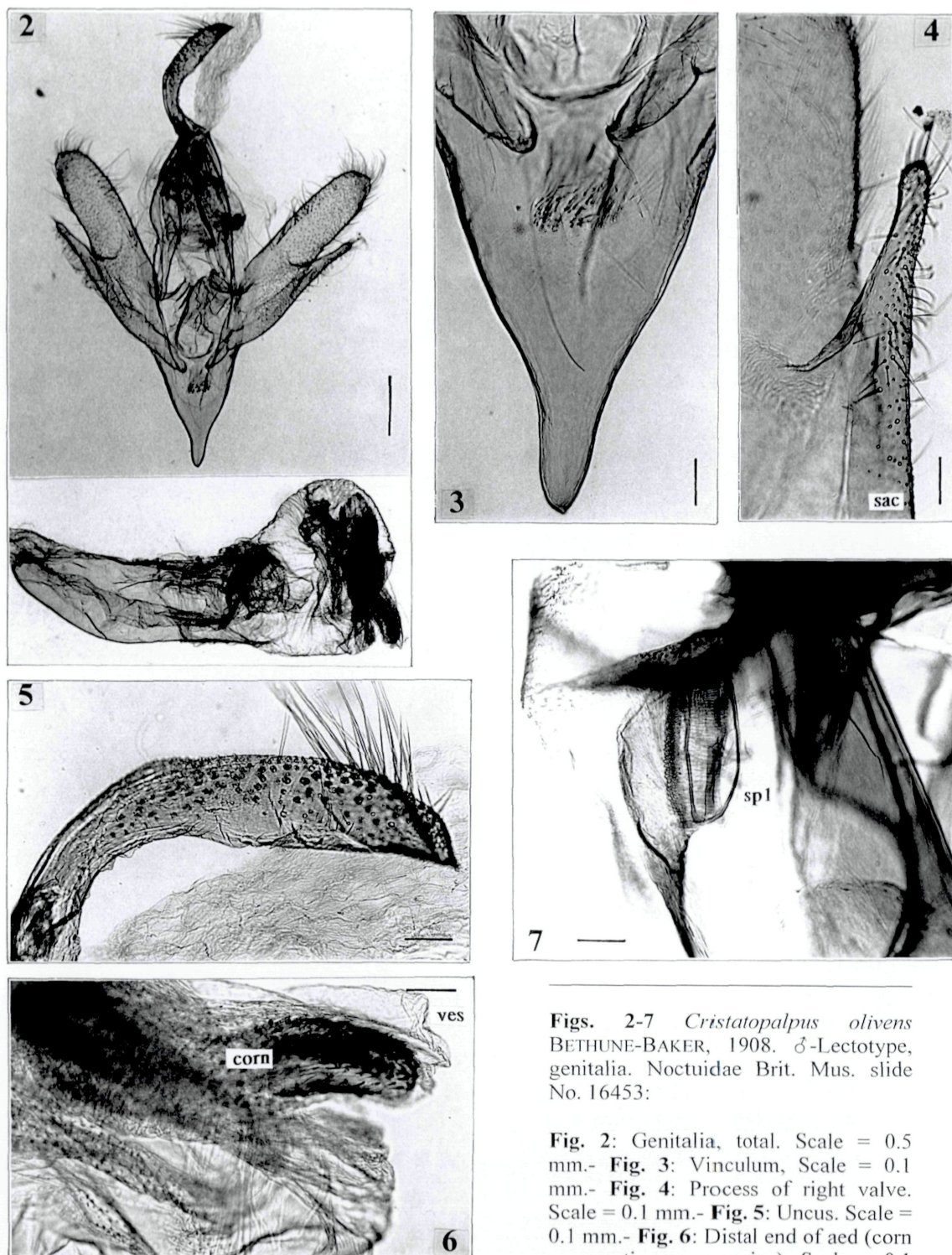
#### Description:

**Head:** Greyish or reddish brown densely covered with long hair-like scales. Labial palps massive and also densely covered with scales, especially the distal part of II with dorsal and ventral bundles of hair-like scales. III shorter than II. Antennae bipectinate with long ciliae.

**Thorax and abdomen:** Body stout, massively covered with long scales. Thorax reddish brown, abdomen - particularly the first segments - pale greyish brown or beige, the last segments brown. Legs densely covered with hair-like scales, pale greyish brown. Forelegs without tibial sheet. Ta 1 - 5 present. St 2 with a big triangular, skinny fold. Prespiracular hood present (Fig. 7).

**Wings:** Wingspan = 40 mm; l : b = 1,77. The underside of the forewings along the costal margin with a massive row of hair-like, pale greyish brown scales. Forewings broad, apex rounded. Ground colour beige with dark brown pattern. Basal band wavy and marked black brown. The middle of the forewings dark brown. Rm insignificant, Q2 as a wavy shadow. NM big, pale brown with black dots, parted into a top and a ground mark. Q3 widely curved, dark brown, accompanied by a pale band. Q3 begins at the costa with a dark dot and is finely zigzagged. Costal area outside of Q3 dark brown. The adterminal line zigzagged, dark brown. Apical area pale greyish brown or beige. The middle of the outer margin marked by a dark brown patch. SF big and dark brown. Hindwings pale greyish brown, suffused in the middle by dark greyish brown, wavy lines, which are accompanied by pale bands. Marginal dots dark brown. Fringe dark brown.

**♂-genitalia** (Figs. 2-7): Long genitalia with short and stout valves and a long and fine pointed vinculum. The proportions resemble the genitalia of the members of the genus *Gaedeodes* FLETCHER & VIETTE, 1955, but the anal tube does not wear a sickle-shaped scaphium in *C. olivens*. The valves exhibit a narrow sacculus with a short process which is formed like a straight horn (Fig. 4). The length of the



**Figs. 2-7** *Cratichneumon olivens* BETHUNE-BAKER, 1908. ♂-Lectotype, genitalia. Noctuidae Brit. Mus. slide No. 16453:

**Fig. 2:** Genitalia, total. Scale = 0.5 mm.- **Fig. 3:** Vinculum, Scale = 0.1 mm.- **Fig. 4:** Process of right valve. Scale = 0.1 mm.- **Fig. 5:** Uncus. Scale = 0.1 mm.- **Fig. 6:** Distal end of aed (corn = cornuti; ves = vesica). Scale = 0.1 mm.- **Fig. 7:** A1 with spiracle 1 (sp1). Scale = 0.1 mm.

process is about 25 % of vl. The distal end of the valves is rounded. The vinculum is very long (nearly 40 % of vl) and fine pointed (Fig. 3). At the caudal end of the vinculum stands an isolated area of short bristles (Fig. 3). Tegumen slender. Uncus curved at the base, moderately clumsy with a big, club-shaped distal part (Fig. 5). Terminal hook of uncus insignificant. The aed big and stout with a very short, rounded and dorsally oriented coecum. The aed more or less straight. Vesica densely covered with spines and sclerotized teeth, partly concentrated to rows (Fig. 6). Relations:  $ul : ub = 4.9$ ;  $ul : hm = 0.36$ ;  $vl : hm = 0.73$ ;  $ael : hm = 0.73$ ;  $ael : aeb = 2.97$ .

Further information on the *Idia*-group is found in LÖDL (1996a, b, c, 1997, 1998) and OWADA (1987).

### Literature

- BETHUNE-BAKER, G.T. 1908: New Heterocera from British New Guinea. - *Novitates Zoologicae* 15: 175-243.
- LÖDL, M. 1993: Die Flügelzeichnung der Gattungsgruppe *Hypena* SCHRANK 1802 (Lepidoptera: Noctuidae). - *Entomologische Zeitschrift* 103(4): 54-62.
- LÖDL, M. 1993: *Hypena martiniae n.sp.*, eine neue Hypeninen-Art aus dem äquatorialen Afrika (Lepidoptera: Noctuidae). - *Entomologische Zeitschrift* 103(24): 453-459.
- LÖDL, M. 1996a: Wiederbeschreibung von [*Hypena*] *fuscomaculalis* SAALMÜLLER 1880 nebst Bemerkungen zur systematischen Stellung dieses Taxons (Lepidoptera: Noctuidae: Herminiinae). - *Senckenbergiana biologica* 75 (1/2): 193-202.
- LÖDL, M. 1996b: Zur Kenntnis von *Ctenypena tenuis* A.E. PROUT, 1927 und Erstbeschreibung des Weibchens (Lepidoptera: Noctuidae: Herminiinae). - *Annalen des Naturhistorischen Museums in Wien* 98B: 501-506.
- LÖDL, M. 1996c: Wiederbeschreibung von *Aulocheta violacea* A.E. PROUT, 1927 (Lepidoptera: Noctuidae: Herminiinae). - *Zeitschrift der Arbeitsgemeinschaft Österreichischer Entomologen*: 99-105.
- LÖDL, M. 1997: Wiederbeschreibung von *Ableptina delospila* A.E. PROUT, 1927 und Transfer in die Unterfamilie Herminiinae (Lepidoptera, Noctuidae). - *Annalen des Naturhistorischen Museums Wien* 99B: 337-342.
- LÖDL, M. 1998: First approach on the identity and taxonomic position of *Bleptinodes perumbrosa* (HAMPSON, 1898) (Lepidoptera: Noctuidae: Herminiinae). - *Quadriana* 1: 241-246.
- OWADA, M. 1987: A taxonomic study on the subfamily Herminiinae of Japan Lepidoptera, Noctuidae). - National Science Museum, Tokyo: 208 pp.

**Author:** Mag.Dr.Martin Lödl, Naturhistorisches Museum Wien, Burgring 7, A-1014 Wien, Österreich.-  
e-mail martin.loedl @ nhm-wien.ac.at

# ZOBODAT - [www.zobodat.at](http://www.zobodat.at)

Zoologisch-Botanische Datenbank/Zoological-Botanical Database

Digitale Literatur/Digital Literature

Zeitschrift/Journal: [Quadrifina](#)

Jahr/Year: 1998

Band/Volume: [1](#)

Autor(en)/Author(s): Lödl Martin

Artikel/Article: [Notes on Cristatopalpus oliven BETHUNE-BAKER, 1908 \(Lepidoptera: Noctuidae: Herminiinae\). 237-240](#)