

Zekelita stefanieae sp.n., a new Hypeninae from Tanzania (Lepidoptera: Noctuidae)

M. Lödl

Abstract

Zekelita stefanieae sp.n. from Tanzania is described as new. The male adult and the male genitalia are illustrated.

Zusammenfassung

Zekelita stefanieae sp.n. aus Tanzania wird erstmals beschrieben. Das Männchen wird mit seinen Genitalarmaturen abgebildet.

Key words: Ethiopian Region, Hypeninae, new species, Tanzania, *Zekelita*.

Introduction

In the collections of the NHMW (= Museum of Natural History, Vienna) a male of a new species of the genus *Zekelita* WALKER, 1863 could be located. The specimen has been found in assorted material collected in Tanzania by Zerny in the thirties. The new species is described and illustrated.

Zekelita stefanieae sp.n.

(Figs. 1-6)

Type material:

Holotype, ♂ (Fig. 1): „[Tanzania] Tanganyika-Terr., Songea, 1100 m 28.IV.-2.V.'36. Zerny \ NHMW gen. praep. M. Lödl no. 693“ (NHMW).

Derivatio nominis: The new species is dedicated to Mag. Stefanie Kruspel, Wien.

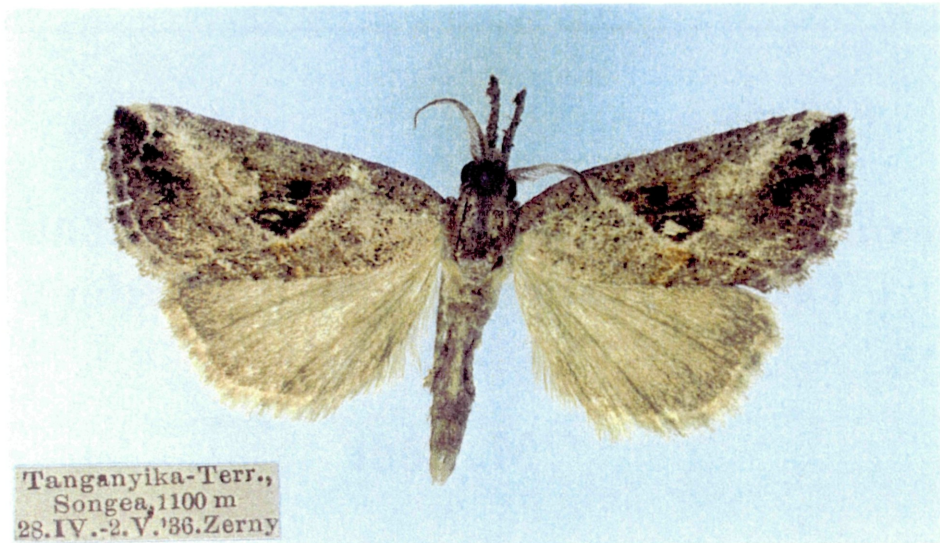


Fig. 1: *Zekelita stefanieae* sp.n., ♂-holotype (NHMW).

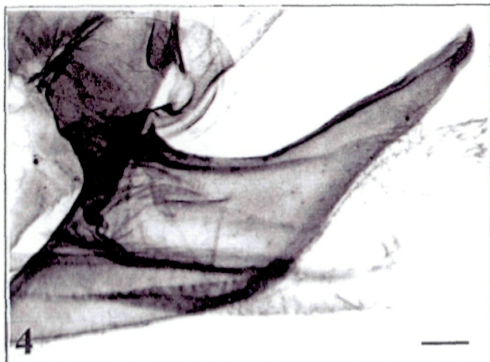
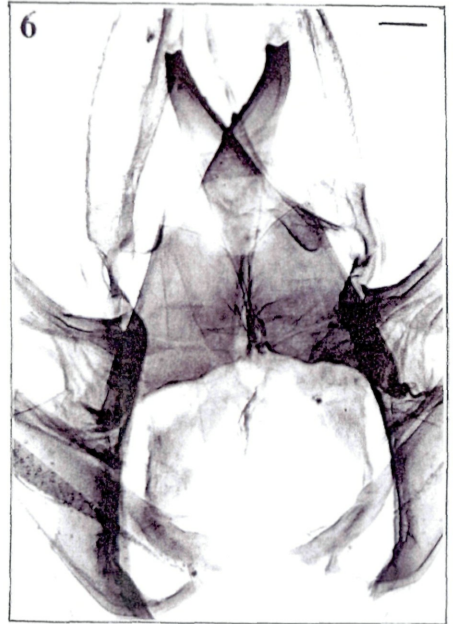
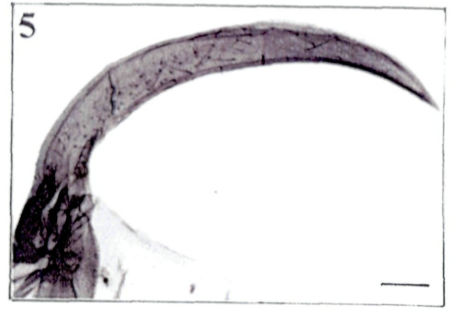
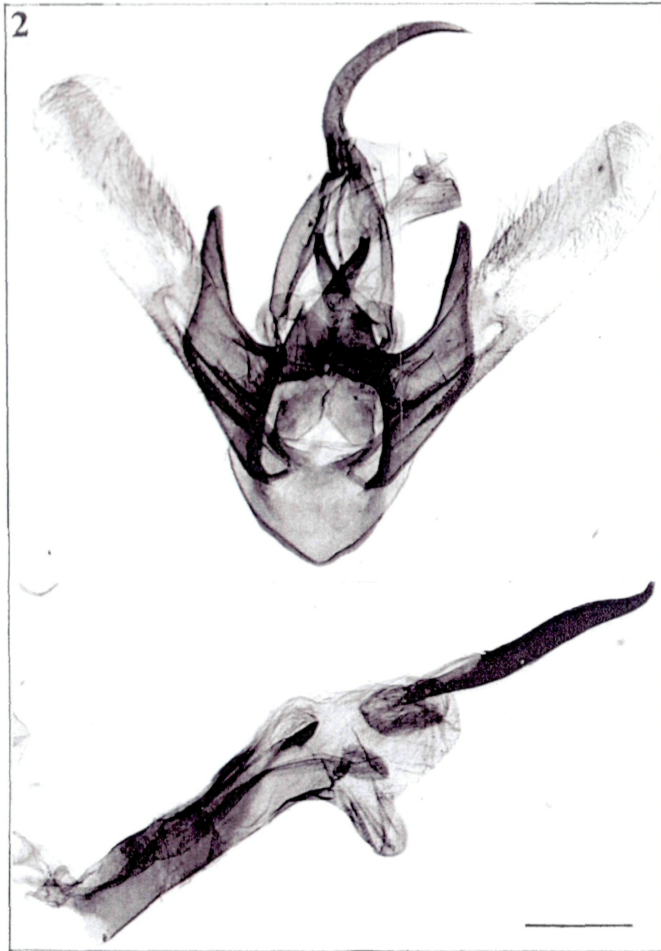
Description:

Head: Antenna pectinata with beige dorsal margin and dark brown branches. Branches very long. Head beige and greyish with white tips of the scales and dark brown scales. Labial palps porrect and oblique, second joint very long, underside concave.

Thorax and abdomen: Beige and greyish with white dots and dark brown scales.

Wings: Wingspan = 20-21 mm; length of forewing : width of forewing = 1.53 - 1.8. Forewings rounded with greyish ground colour and brown and black markings. Most prominent feature is a central symmetry system consisting of a saddle-like shadow which is bordered by a pale greyish line. This shabrack is centred by a big black orbicular spot. The reniform spot is insignificant. The tornus wears a big dark tooth-like scale tuft („Z“ in LÖDL & MAYERL 1998). The forewing base is greyish brown speckled with black scales. The apex is darkened and the subterminal line marked by several black patches. The adterminal line is pale whitish and the fringe is dark greyish brown. The hindwings are greyish brown.

♂-genitalia (Figs. 2-6): Valves relatively broad with rounded distal end. The dorsal and ventral margin of the valves are parallel. The sacculus exhibits a heavily sclerotized, strong horn which strictly points to the caudal end of the abdomen (Fig. 4). The length of the horn is nearly one third of the length of the valve. The vinculum is broad and rounded. Uncus of normal length, curved and fine pointed (Fig. 5). The tegumen is slender. The juxta wears two long, roughly serrated horns which point caudally (Fig. 6). The aedeagus is straight, normally formed and shows a short, strongly sclerotized carina-tooth (Fig. 3). The vesica wears an exorbitantly long cornutus which is slightly upcurved at the distal end (Fig. 3). The cornutus is nearly as long as the corpus aedeagi.



Figs. 2-6 *Zekelita stefanieae* sp.n., ♂-genitalia, NHMW gen. praep. M. Lödl no. 693:

Fig. 2: Genitalia, total. Scale = 0.5 mm.- **Fig. 3:** Distal end of aedeagus and cornutus. Scale = 0.1 mm.- **Fig. 4:** Sacculus of right valve. Scale = 0.1 mm.- **Fig. 5:** Uncus. Scale = 0.1 mm.- **Fig. 6:** Juxta. Scale = 0.1 mm.

The new species is placed in the subgenus *Zekelita* WALKER, 1863 near the type-species *Zekelita* (*Zekelita*) *equalisella* WALKER, 1863.

Literature

LÖDL, M. & MAYERL, B. 1998: Revision der Gattung *Zekelita* WALKER, 1863 (= *Rhynchodontodes* WARREN, 1913) (Lepidoptera: Noctuidae: Hypeninae).- *Quadrifina* 1: 115-230.

Author's address: Mag. Dr. Martin Lödl, Naturhistorisches Museum Wien, Burgring 7, A-1014 Wien, Austria.- e-mail: martin.loedl@nhm-wien.ac.at

ZOBODAT - www.zobodat.at

Zoologisch-Botanische Datenbank/Zoological-Botanical Database

Digitale Literatur/Digital Literature

Zeitschrift/Journal: [Quadrifina](#)

Jahr/Year: 1999

Band/Volume: [2](#)

Autor(en)/Author(s): Lödl Martin

Artikel/Article: [Zekelita stefanieae sp.n., a new Hypheninae from Tanzania \(Lepidoptera: Noctuidae\). 205-208](#)