



Smithsonian
Institution
Libraries

Gift of

DR. FREDERICK M. BAYER

J. v. d. Beugh den.
© Biodiversity Heritage Library, http://www.biodiversitylibrary.org/; www.zobodat.at

DIE
GROSS-SCHMETTERLINGE
DER ERDE

EINE SYSTEMATISCHE BEARBEITUNG DER BIS
JETZT BEKANNTEN GROSS-SCHMETTERLINGE

IN VERBINDUNG MIT NAMHAFTEN FACHMÄNNERN

HERAUSGEGEBEN VON

PROF. DR. ADALBERT SEITZ



I. ABTEILUNG — PALAEARKTISCHE FAUNA — BAND 1—4

II. ABTEILUNG — EXOTISCHE FAUNA — BAND 5—16

13. BAND

ALFRED KERNEN VERLAG STUTTGART

1 9 2 5

DIE
AFRIKANISCHEN
TAGFALTER

MIT 80 TAFELN



TAFEL-BAND



ALFRED KERNEN VERLAG STUTTGART

1 9 2 5

Alle Rechte, besonders die der Uebersetzung,
vorbehalten.

Printed in Germany.

Copyright 1925 by Alfred Kern Verlag, Stuttgart.

13. Band.

Inhalts-Verzeichnis der Tafeln.

Die beigesetzten Ziffern bezeichnen die Tafelnummern.

Auf jeder Tafel ist des Raumes wegen nur die erste und letzte der auf der Tafel vertretenen Gattungen angegeben z. B. auf Tafel 52 nur *Precis-Lachnoptera* während sie auch Abbildungen aus den Gattungen *Antanartia*, *Argynnis* usw. enthält, wie im Text (S. 228—231) angegeben.

- | | | | |
|-----------------------|----------------------|-------------------------|----------------------|
| Abantis 75, 76 | Cymothoë 31—36 | Iolaus 67—70 | Pieris 12—15, 22 |
| Acallopiestes 79, 80 | Cynandra 46 | Iridana 64, 65 | Planema 57—59 |
| Acleros 77 | Cyrestis 49 | | Platylesches 78, 79 |
| Acraea 53—57, 59, 60 | | Kallima 49, 50 | Ploetzia 79 |
| Alaena 61—63 | Danaida 23 | Katreus 76 | Powellana 64 |
| Amaurina 24, 25 | Dapidodigma 68 | Kedestes 78 | Precis 50—52 |
| Amauris 23—25 | Deloneura 61, 65 | | Procampta 76 |
| Ampittia 78 | Desmolycaena 70 | Lachnocnema 65 | Prosopalpus 77 |
| Andronymus 79 | Deudorix 65, 66, 68 | Lachnoptera 52 | Pseudacraea 46 |
| Antanartia 52 | Diestogyna 37—40 | Larinopoda 63 | Pseudaletis 66 |
| Apaturopsis 50 | Durbania 62 | Leptomyrina 70 | Pseudargynnis 46 |
| Aphnaeus 69 | | Leptoneura 28 | Pseudathyma 49 |
| Aphysonera 28 | Eagris 76 | Leptosia 10 | Pseuderesia 62, 63 |
| Appias 11, 12, 22 | Elymniopsis 26 | Libythea 61 | Pseudoneptis 46 |
| Argynnis 52 | Epitola 64, 65 | Liptena 62—65 | Pseudonympha 28, 29 |
| Argyrocheila 64 | Epitolina 64 | Lyeaenesthes 71, 72 | Pseudopontia 10 |
| Arrugia 71 | Eresina 62, 64 | | Pteroteinon 80 |
| Artitropa 79, 80 | Eresinopsides 61 | Malaza 77 | Pyrrhoehalcia 75 |
| Aslauga 64, 65 | Ergolis 49 | Megalopalpus 62, 65 | |
| Atella 52 | Erikssonia 71 | Melanitis 26 | Rhabdomantis 77 |
| Aterica 48 | Eronia 15, 21 | Meneris 29 | Rhopalocampta 75, 78 |
| Axiocerses 70 | Euliphyra 64, 65 | Mesoxantha 49 | |
| | Euphaedra 42—15 | Micropentila 62, 64 | Salamis 50 |
| Batulusia 64 | Euploea 23, 25 | Minacraea 62, 63 | Sarangesa 76 |
| Byblia 49 | Euptera 50 | Mycalesis 26—28 | Saribia 61 |
| | Euryphaedra 50 | Mylothris 10—12, 14, 22 | Semolea 78, 79 |
| Caenides 77—80 | Euryphene 10, 41, 44 | Myrina 66, 68 | Scheffieldia 63 |
| Calleagris 76 | Euryphura 36 | | Smerina 52 |
| Calopieres 16 | Eurytela 49 | Neaveia 61 | Spalgis 71 |
| Caprona 76 | Euxanthe 29 | Neocoenyra 28, 29 | Spindasis 69, 70 |
| Capys 70 | | Neptidopsis 49 | Stugeta 67, 68 |
| Carcharodes 75 | Gamia 79, 80 | Neptis 48 | |
| Catacroptera 52 | Gastrochaeta 77 | | Tagiades 76 |
| Catopsilia 21 | Gnophodes 26 | Osmodes 77 | Teinorhinus 77 |
| Catuna 46 | Gorgyra 77, 79 | Oxylides 66—68 | Telipna 61—63 |
| Celaenorrhinus 75, 76 | | Oxypalpus 77 | Teracolus 15—21 |
| Ceratrachia 78, 79 | Hamanumida 46 | | Terias 22 |
| Charaxes 30—33 | Harmilla 45 | Padraona 79 | Teriomima 62 |
| Chondrolepis 78 | Henotesia 28 | Papilio 1—9 | Trapezites 79 |
| Choroselas 69, 70 | Heodes 74 | Pararge 28 | Trichiolaus 67 |
| Citrinophila 62 | Herpaenia 10, 22 | Pardaleodes 79 | |
| Colias 22 | Hesperia 75 | Pardopsis 53 | Vanessula 52 |
| Cooksonia 63 | Heteropsis 28 | Parnara 77—79 | |
| Crenidomimas 46 | Heteropterus 77, 78 | Paronymus 79 | Xanthodisea 79 |
| Crenis 48, 49 | Hewitsonia 64 | Parosmodes 77 | |
| Crudaria 70 | Hypoleucis 77 | Pentila 61—63 | Ypthima 28, 29 |
| Cupido 72—71 | Hypolimnas 47, 48 | Phasis 70 | |
| Cyclopides 77, 78 | Hypolycaena 67, 68 | Physaneura 28 | Zerites 69, 70 |
| | | Phytala 64, 65 | Zophopetes 79, 80 |

PAPILIO



Pars II. Fauna africana 1.



Pl. II. Fauna africana 1.

PAPILIO



PAPILIO

171

4.



Papilio Fauna africana 1.



a



hornimani

charopus

oribazus

pseudonireus

b



phorbanta ♀

epiphorbas

epiphorbas U

delalandei ♂

c



phorcas

thersander

ansorgei

PAPILIO



Par. II. Fauna africana 1.

PAPILIO

a



ophidicephalus



illyris



kirbyi

b



lormieri U



lormieri

c



sisenna



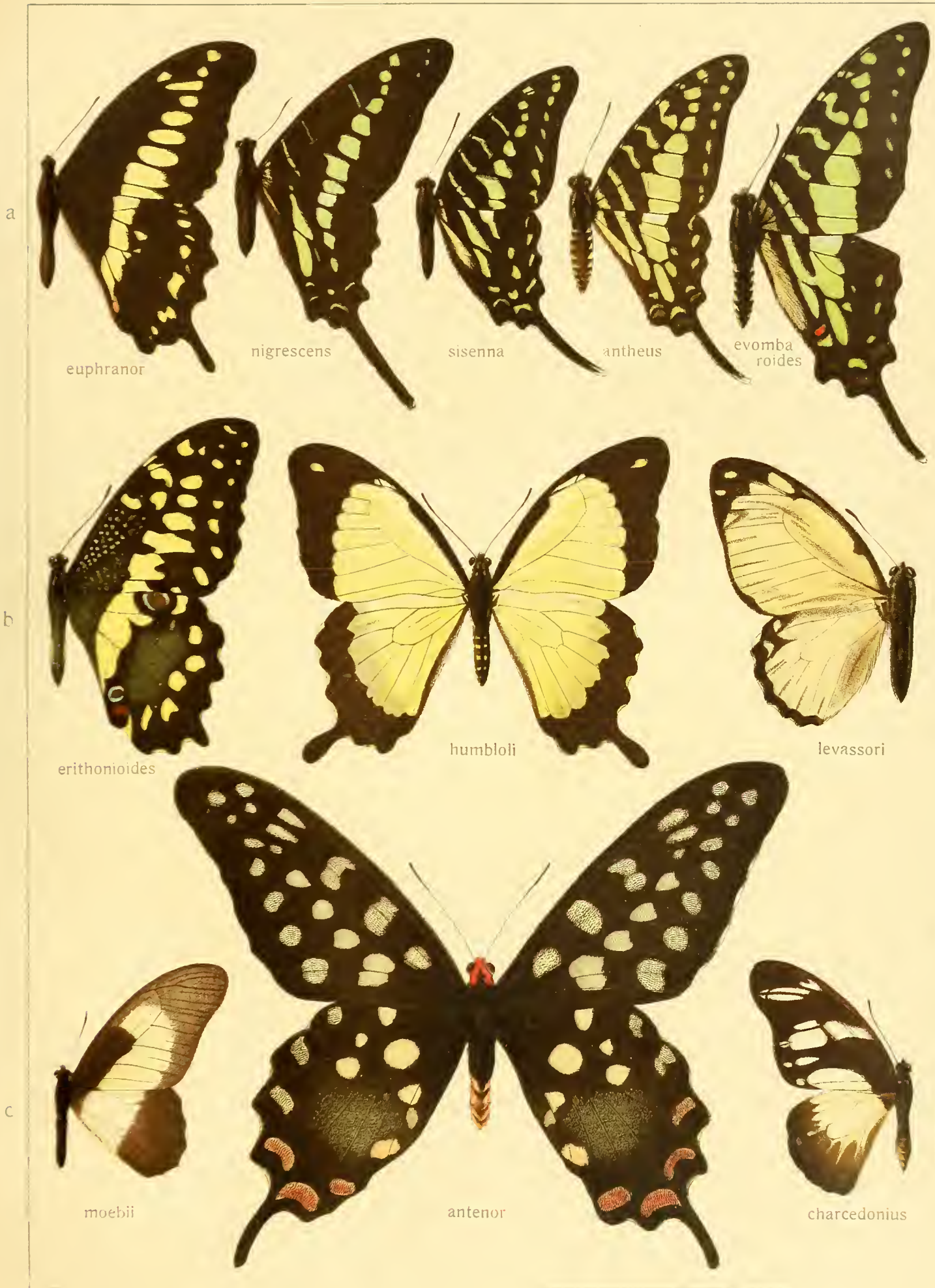
evombar



porthaon



colonna

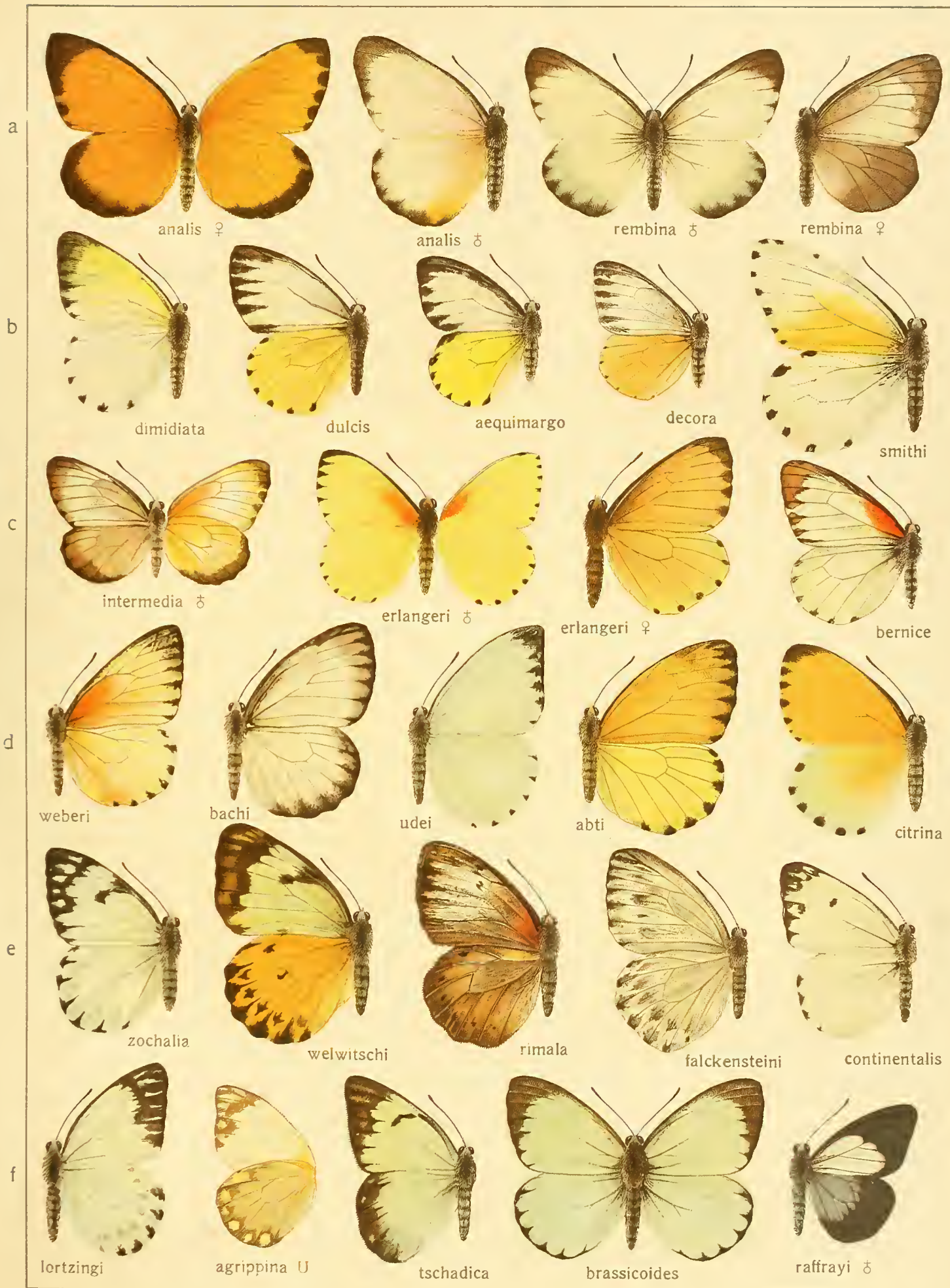


PSEUDOPONTIA - MYLOTHRIS





MYLOTHRIS-PIERIS.



Pars II. Fauna africana 1.

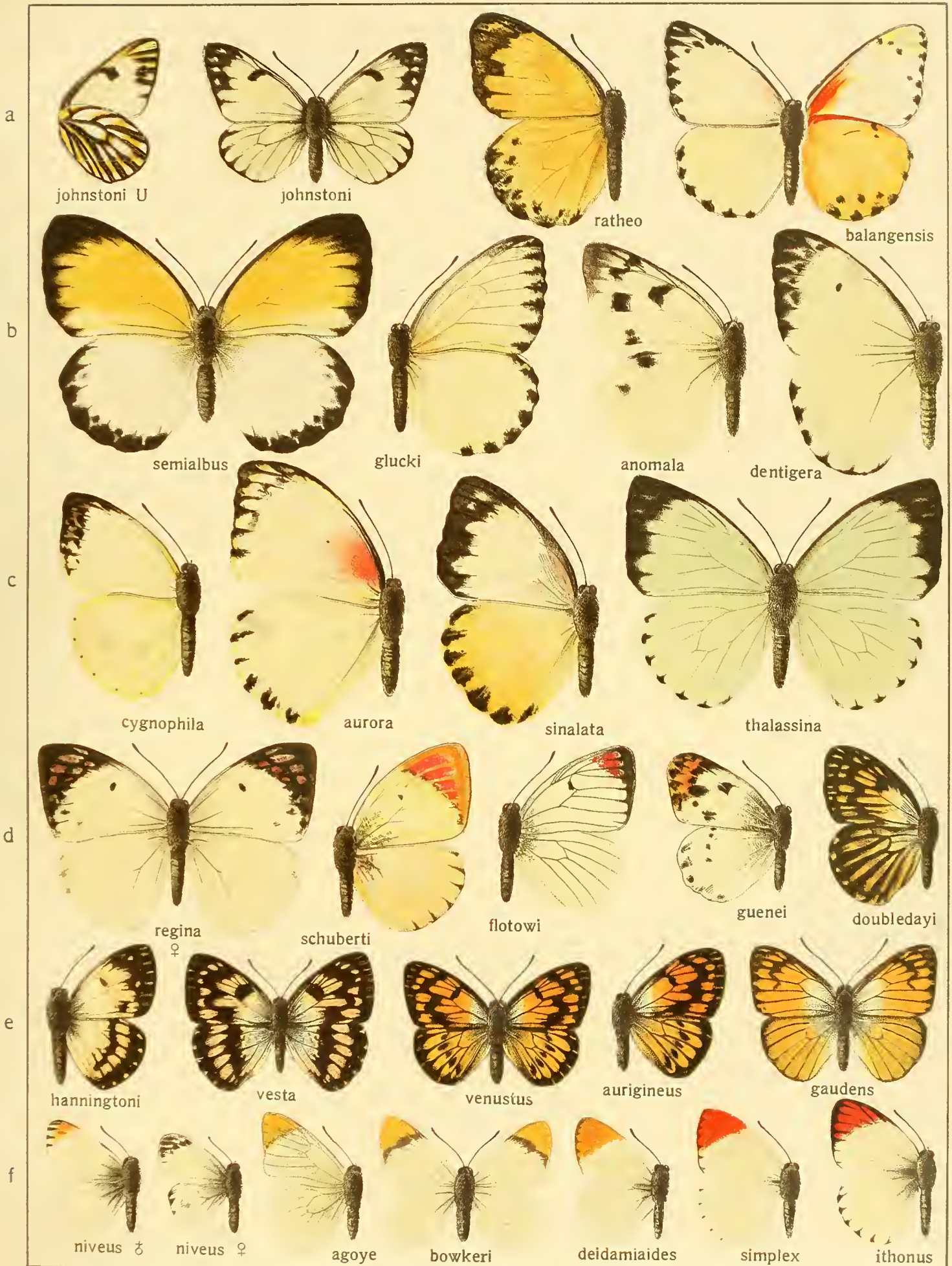
PIERIS



PIERIS



PIERIS-TERACOLUS.



Pars II. Fauna africana 1.



TERACOLUS





TERACOLUS

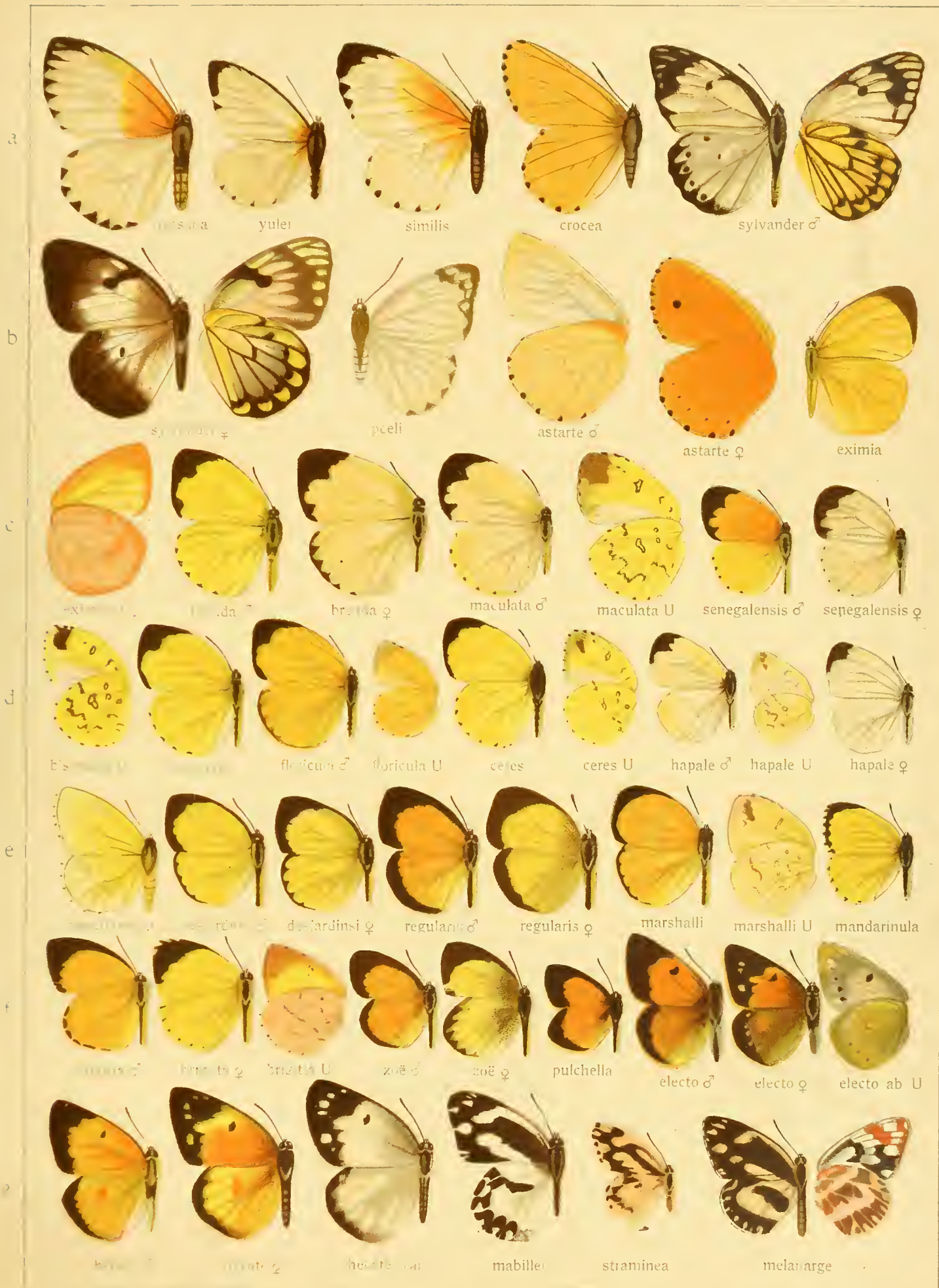


TERACOLUS





APPIAS - HERPAENIA



a



petiverana ♀



morgeni ♂

b



mercedonia ♂



formosa ♂



goudoti ♂

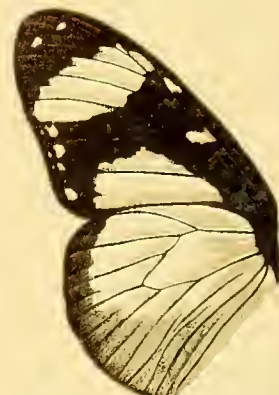
c



euphon ♂



dominicanus ♂



dominicanus ♂U

d



vashti ♂



nossima ♂



nianius ♂



AMAURIS - EUPLOEA

a



tartare



bulbifera



psyttalea

b



fenestrata



ellioti



damocles

c



hirsuta



egialea ♂



comoranus

d



sikkimensis



ionengula



mitra



desjardinsi



MYCALESIS



a



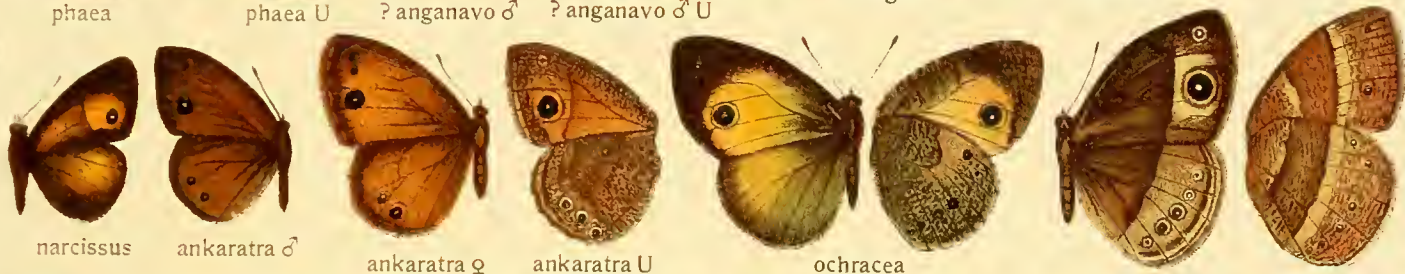
campina U obscura U perspicua perspicua U elisi peitho maevius

b



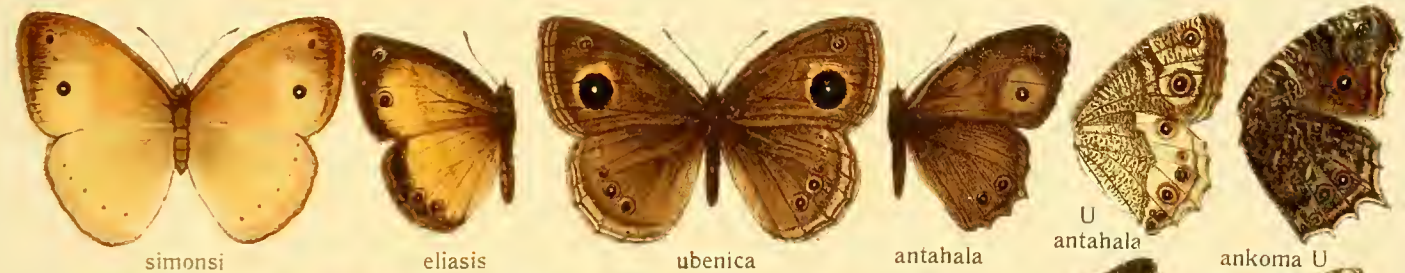
phaea phaea U ? anganavo ♂ ? anganavo ♂ U strigula ankova U fi aterna

c



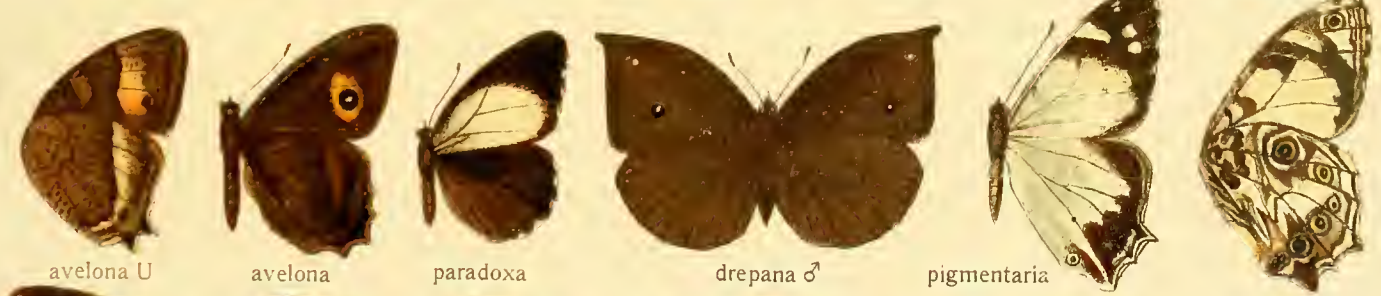
narcissus ankaratra ♂ ankaratra ♀ ankaratra U ochracea teratia teratia U

d



simonsi eliasis ubenica antahala antahala U ankoma U

e



avelona U avelona paradoxa drepana ♂ pigmentaria pigmentaria U

f



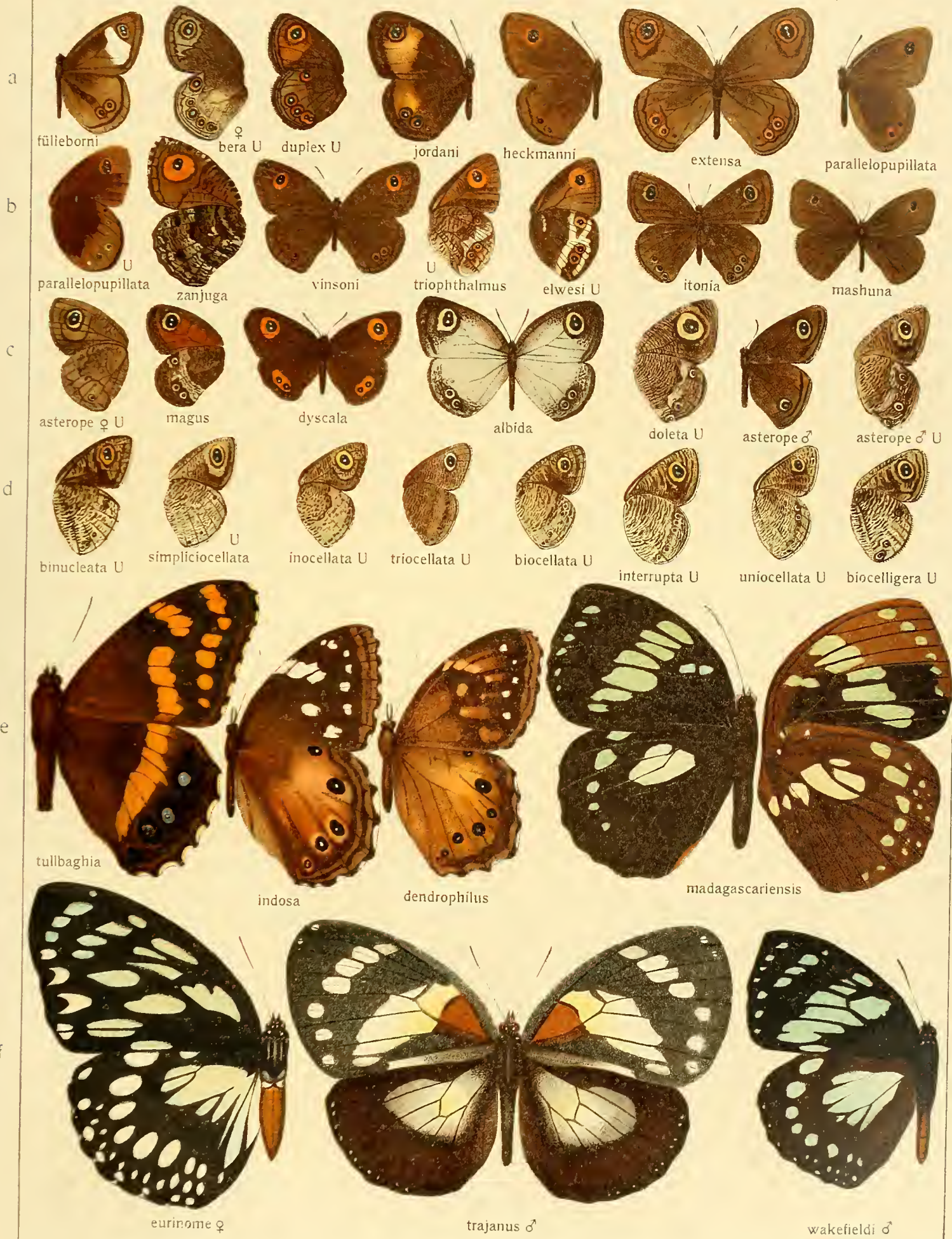
clytus cassina maderakal dyscala panda pione leda

g



hippia ♀ cassius vigilans hyperbius narycia bera ♂ bera ♂ U

NEOCOENYRA - EUXANTHE



CHARAXES



CHARAXES



CHARAXES

XIII

a



candiope



antamboulou



antamboulou



paphianus ♂

b



zoolina



neanthes



nichetas



leoninus



zelica ♂

c



eupale



doubledayi ♂



laodice ♀



laodice U

d



varanes



fulvescens



decius ♂



ussheri ♂



zingha

CHARAXES

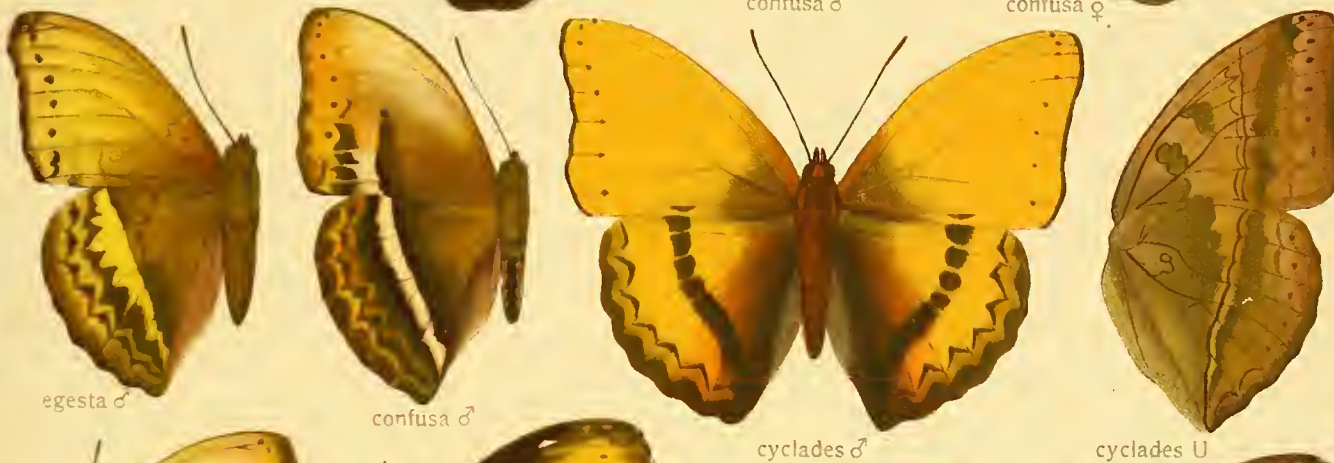


CYMOTHOE

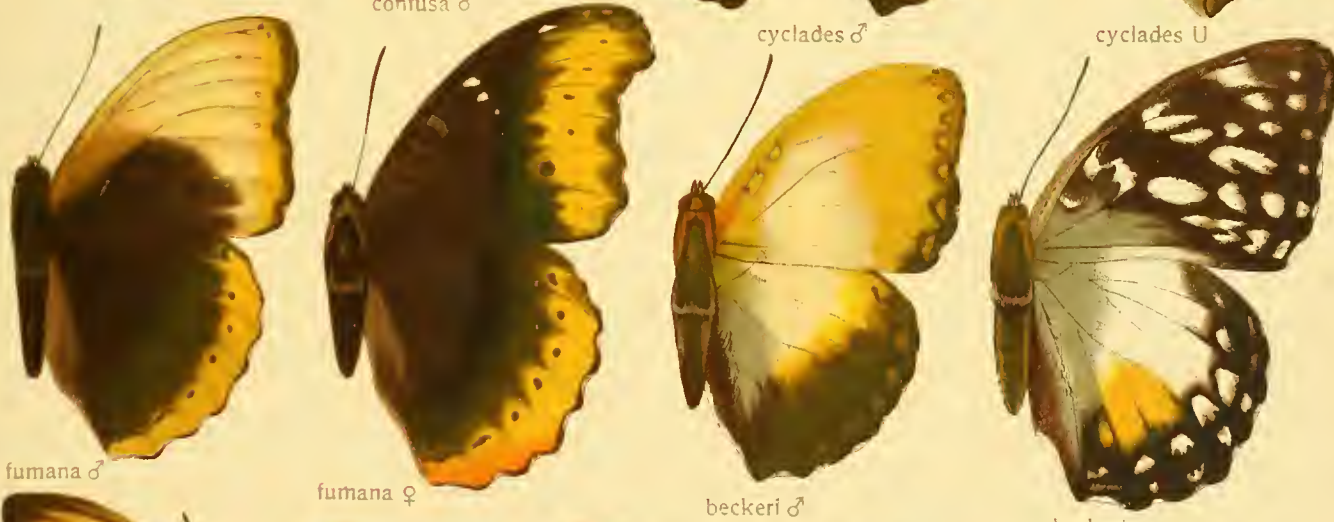
a



b

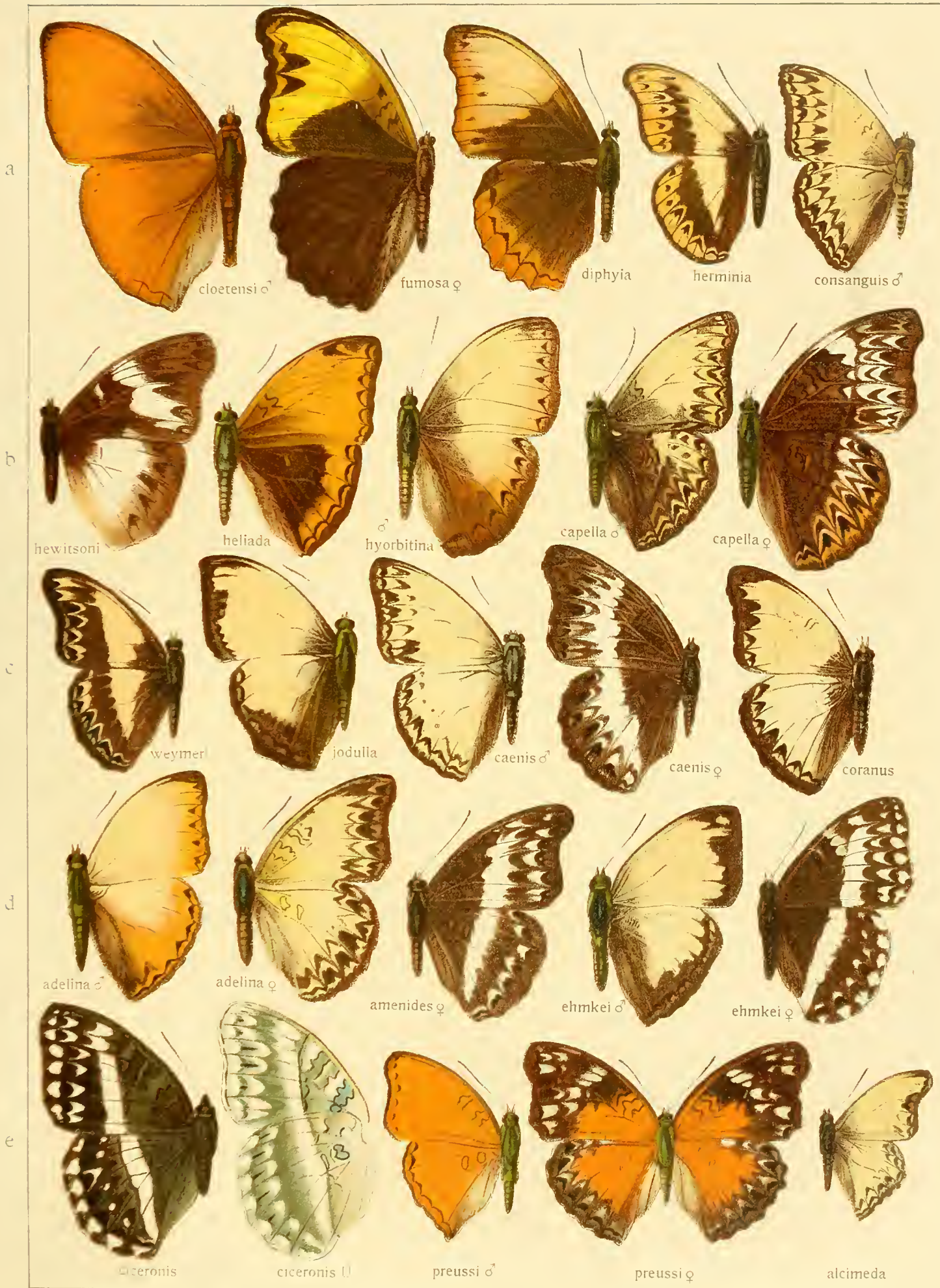


c



d





Pars II. Fauna africana 1.



Pars II. Fauna africana 1.





Pars II. Fauna africana 1.

DIESTOBYNA



Part II. Fauna africana II

EURYPHENE



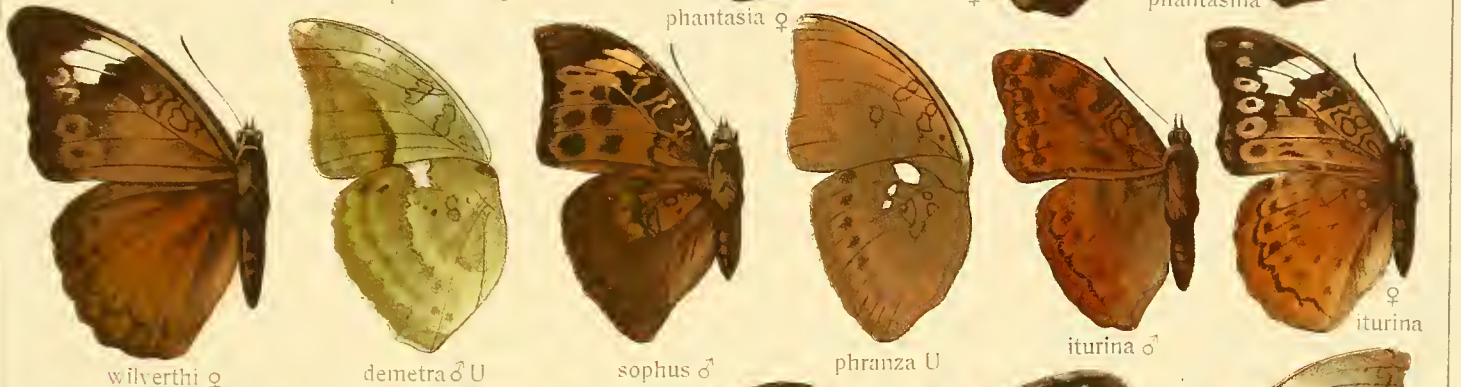
EURYPHENE

a



wilverthi ♂ phantasia ♂ phantasia ♀ dilatata ♀ phantasina ♀

b



wilverthi ♀ demetra ♂ U sophus ♂ phranza U iturina ♂ iturina ♀

c



oxione ♂ oxione ♀ laetitia ♂ laetitia ♀ partita ♀ U

d



mandinga ♂ mandinga U zonara ♀ abesa ♂ abesa U absolon ♂ carshena ♂

e



ikelemba ♀ abesa ♀ U abesa ♀

f



tentyris ♂ U tentyris ♂ carshena ♂ absolon ♀ absolon ♂

EUPHAEDRA

a



perseis



eusemoides



hybridus



hybridus U

b



coprates



ruspina



eleus



zampa



edwardsi ♂ U



edwardsi ♂

c



francina



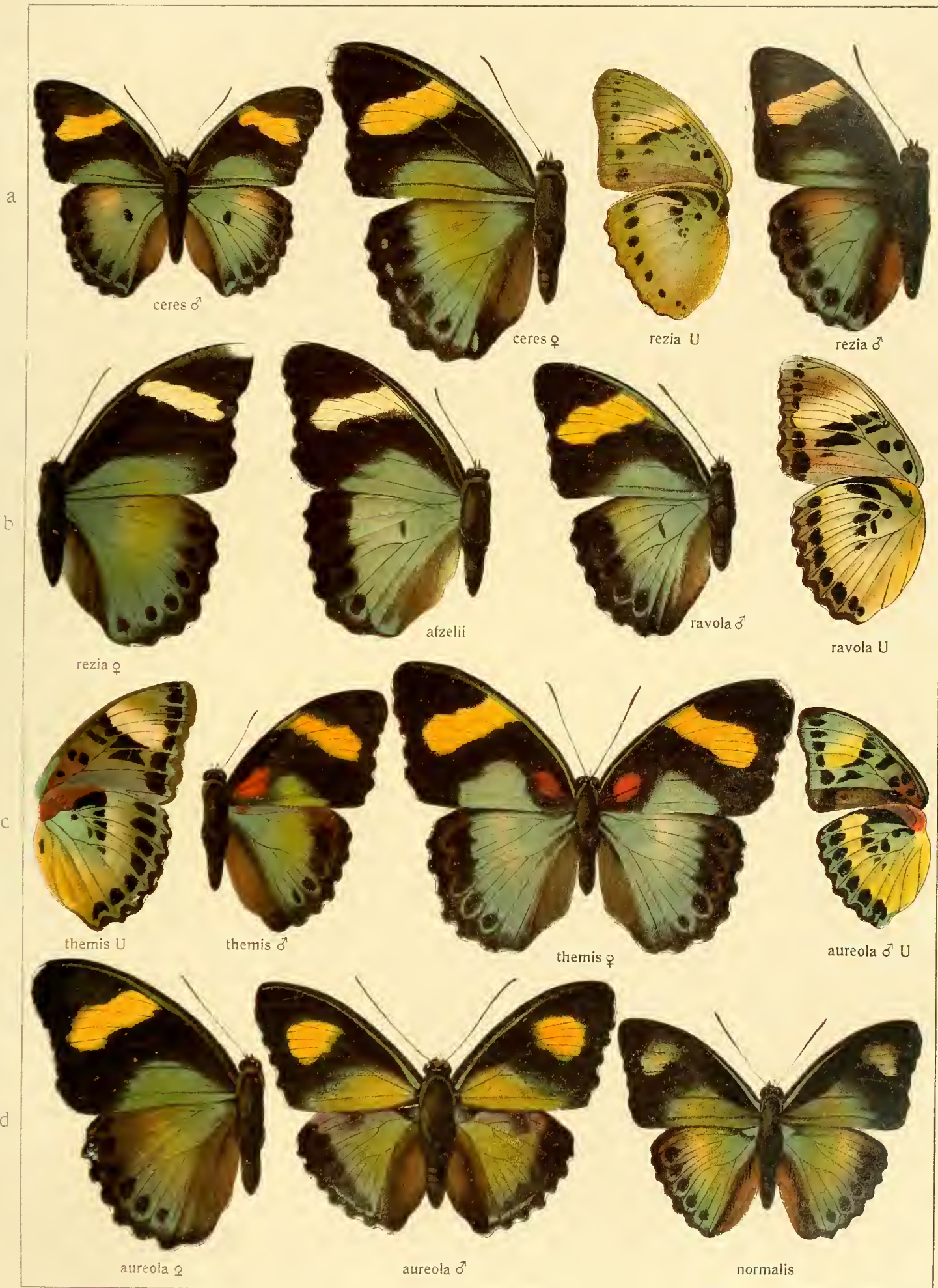
preussi



inanum ♂



inanum ♀



EUPHAEDRA - EURYPHENE

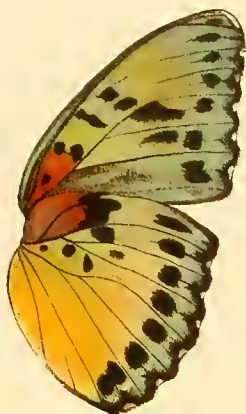
a



nigrocilia U



gausape U



vetusta U



cyparissa U



aurata U

b



adonina



xypete



xypete U



herberti U



niveovittata U

c



zaddachi



inanum U



sarita



sarita U



rana U

d



eberti U



barombina



chriemhilda



wardi U

a



luperca



medon ♂



medon ♀



agnes

b



harpalyce



eupalus



losinga ♀



losinga ♂



spatiosa ♂



spatiosa ♀



neophron ♀

c



neophron ♂



neophron ♀



elegans

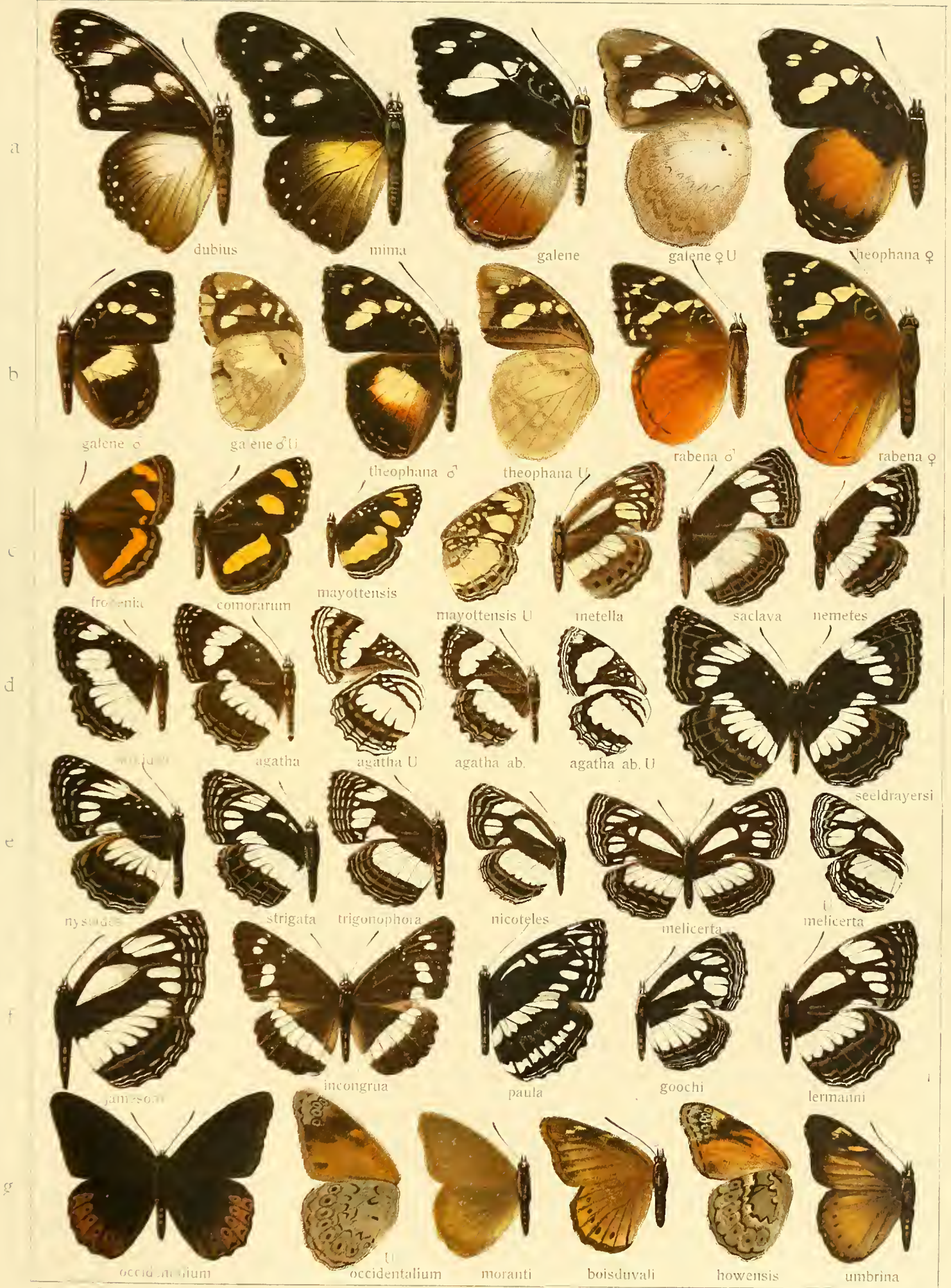


Pars II. Fauna africana 1.

HYPOLIMNAS



HYPOLIMNAS - CRENIS



Par. II. Fauna africana 1.



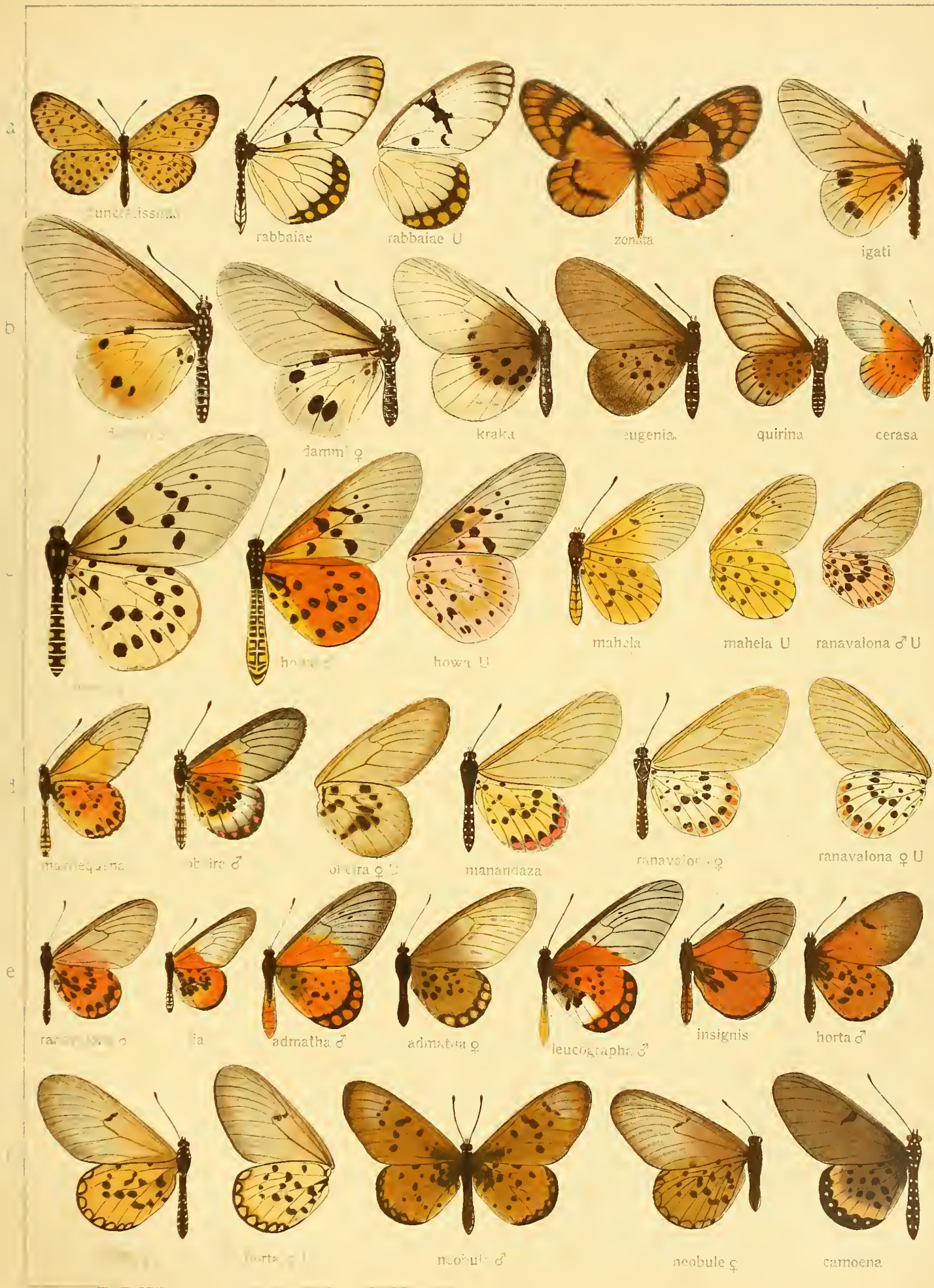






Pars II. Fauna africana 1.

PARDOPSIS - ACRAEA



Plat. II. Fauna africana 1.

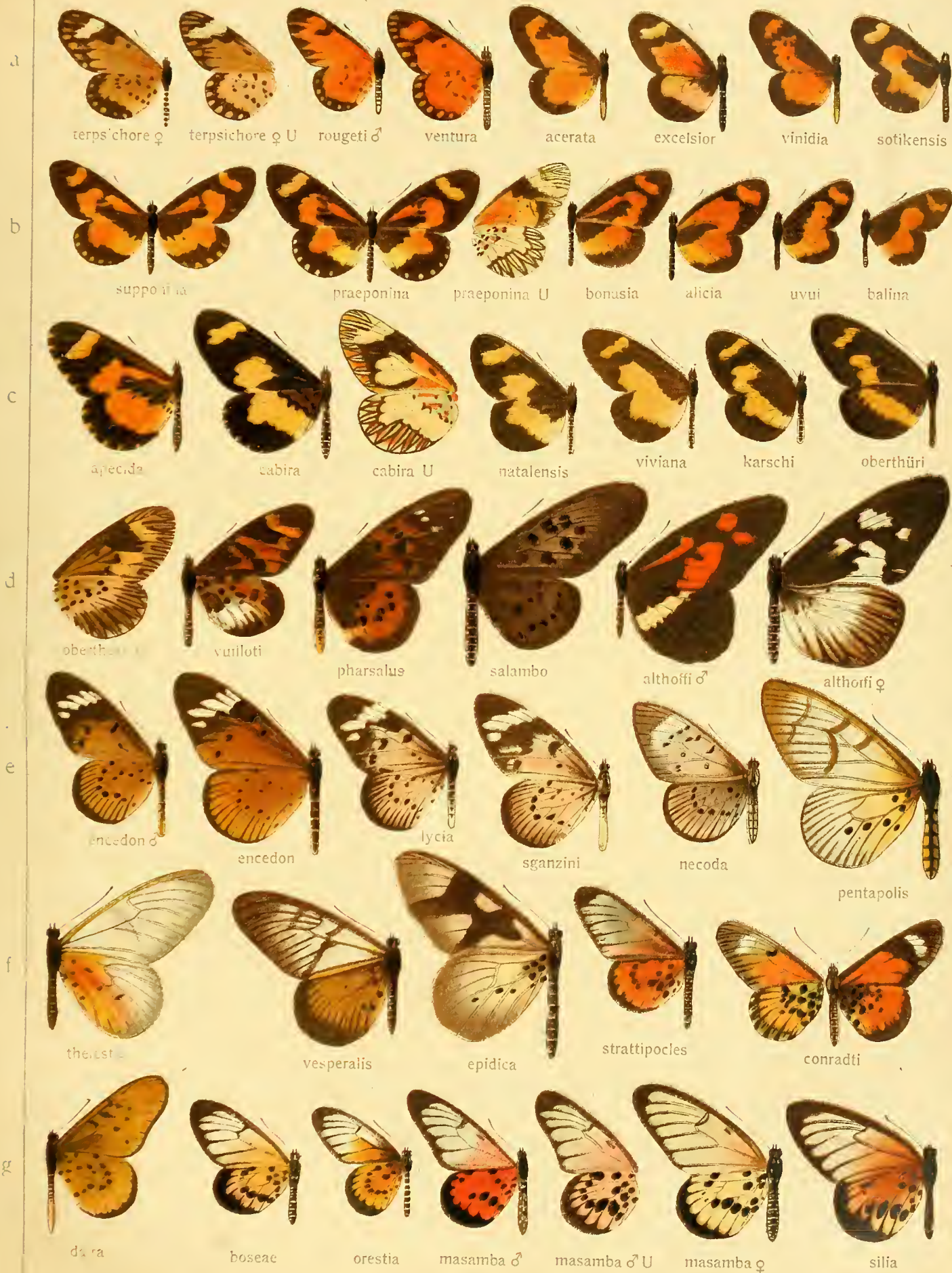
ACRAEA



ACRAEA



ACRAEA

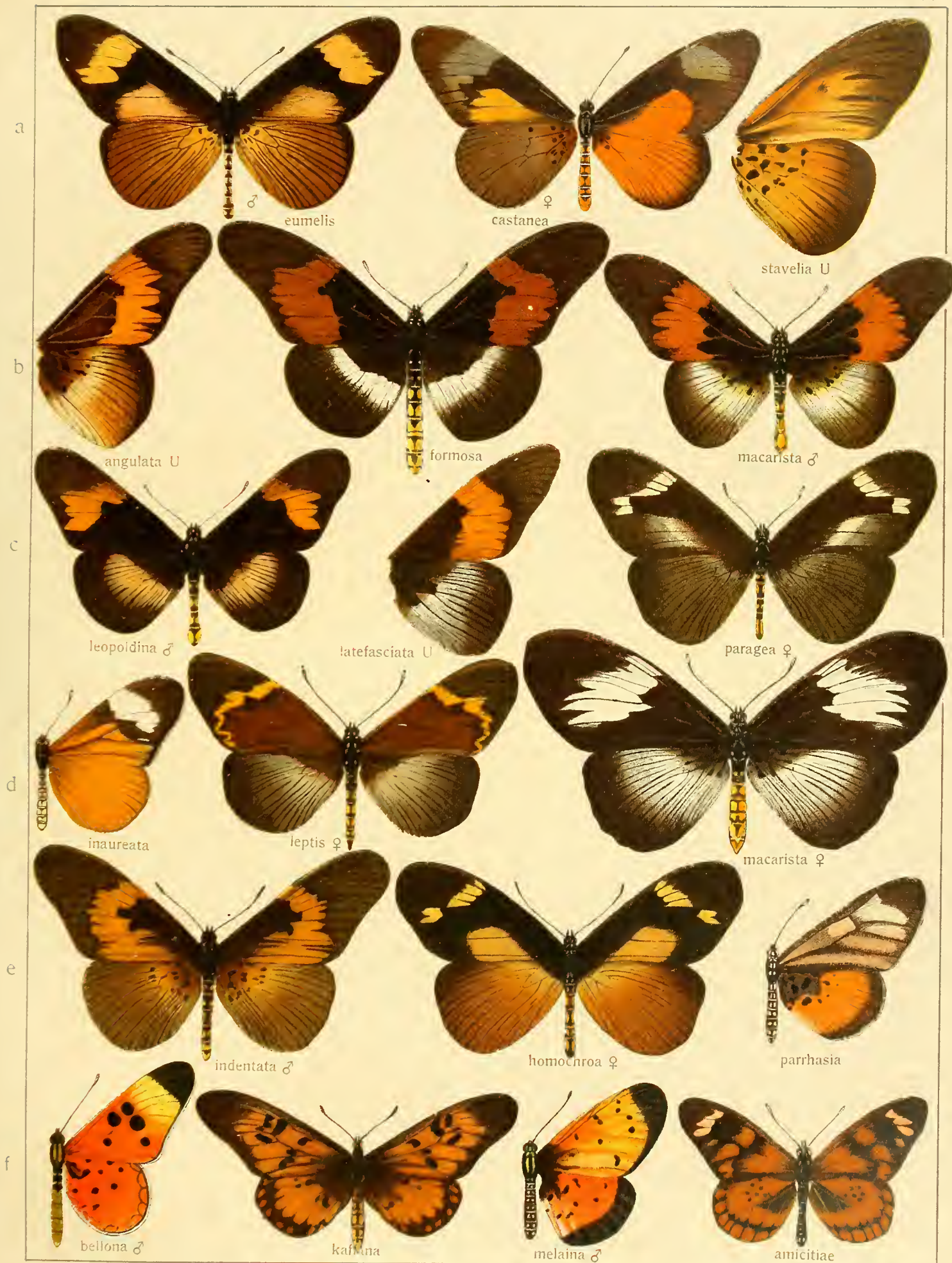


ACRAEA - PLANEMA

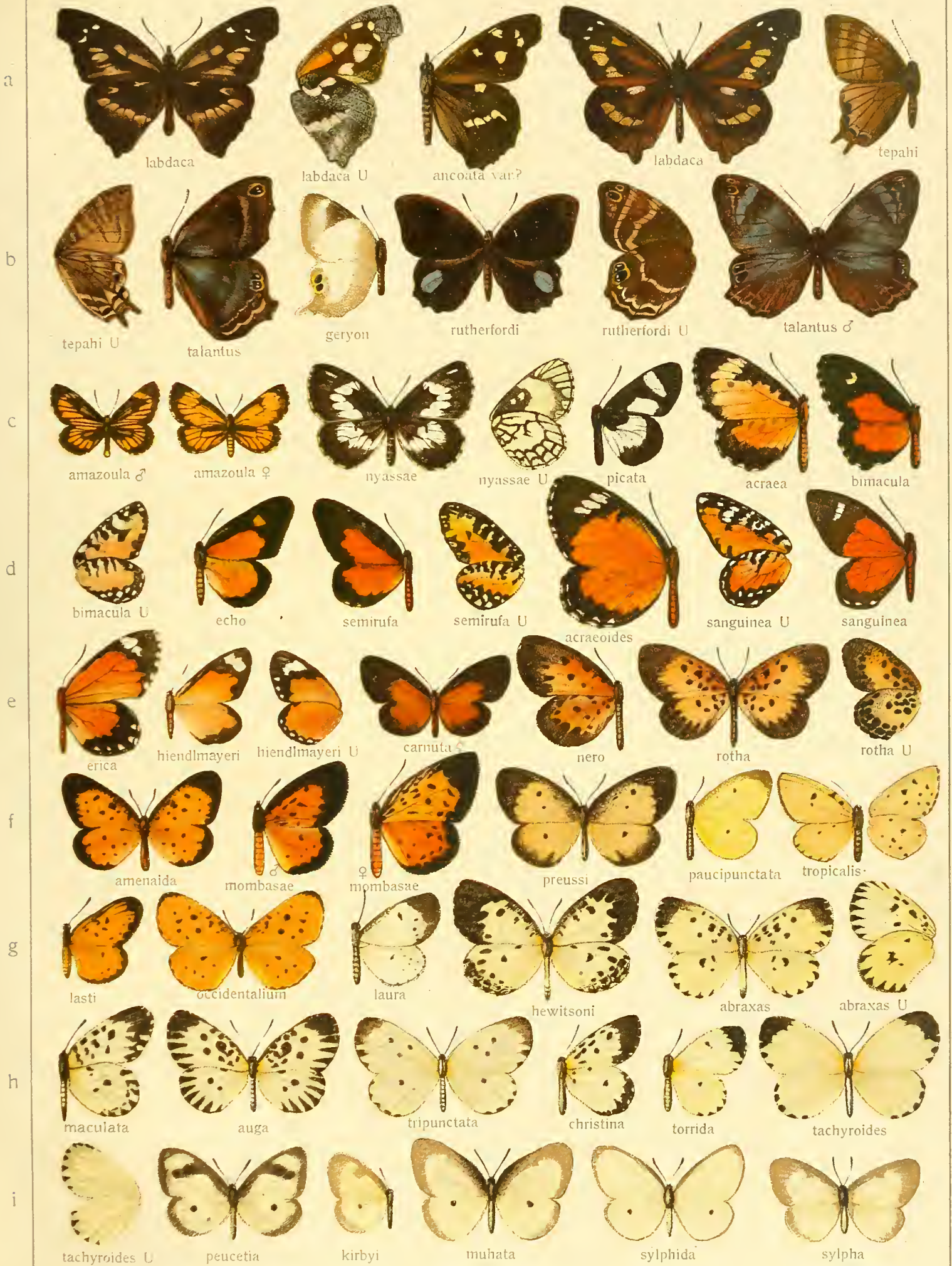


PLANEMA





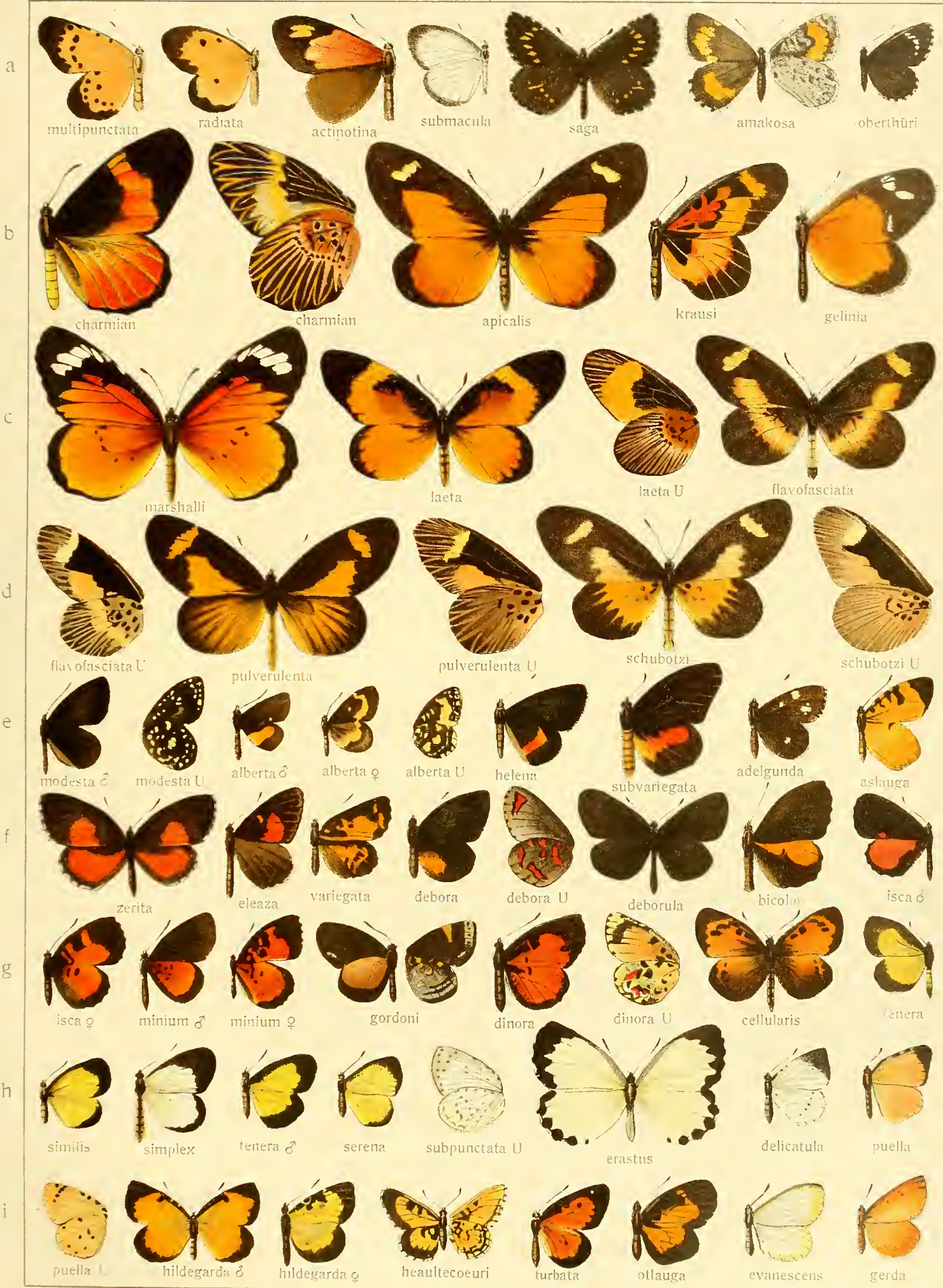


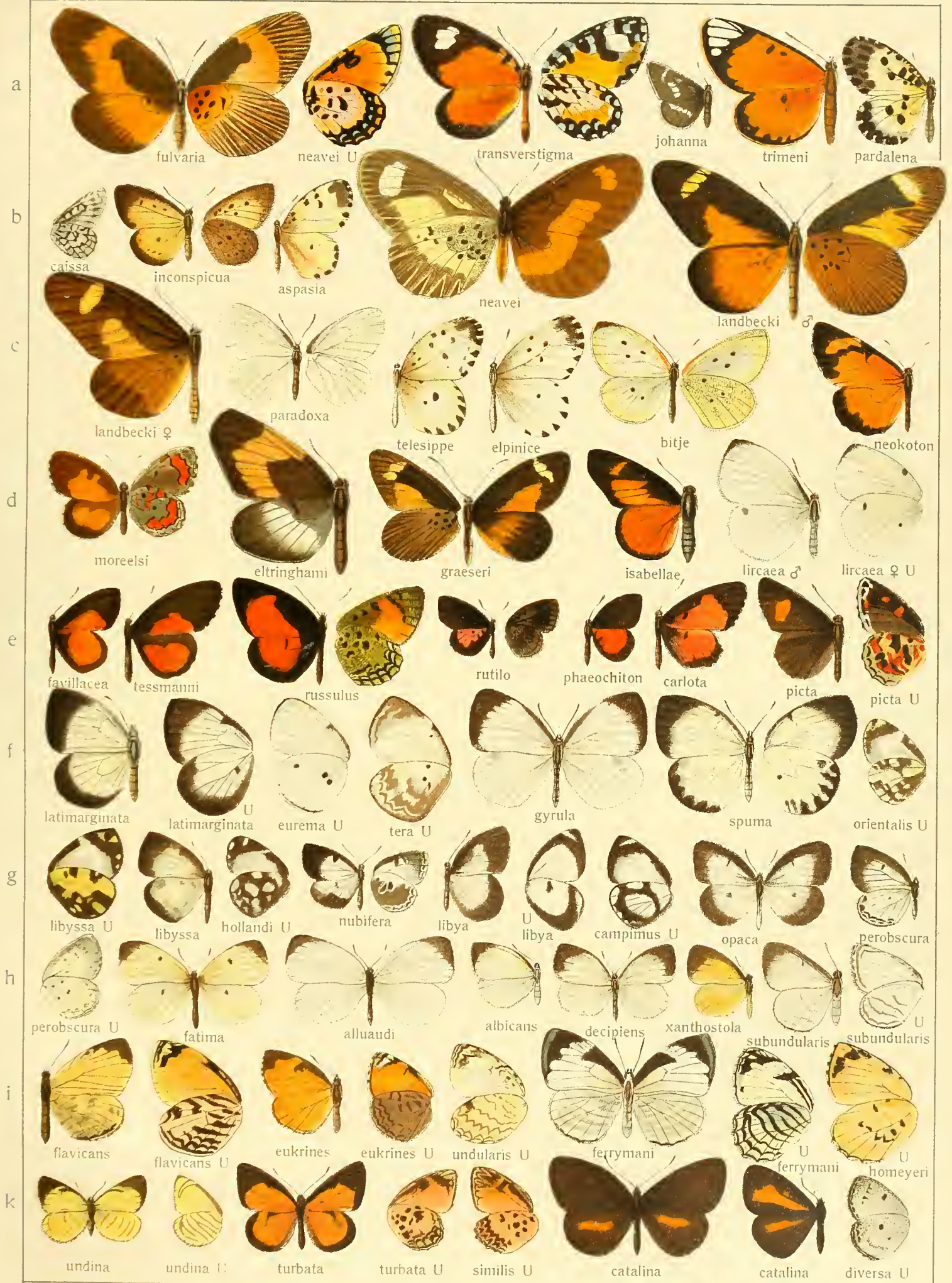


PENTILA - DURBANIA

XIII

62





Pars II. Fauna africana 1.

LIPTENA-EPITOLA



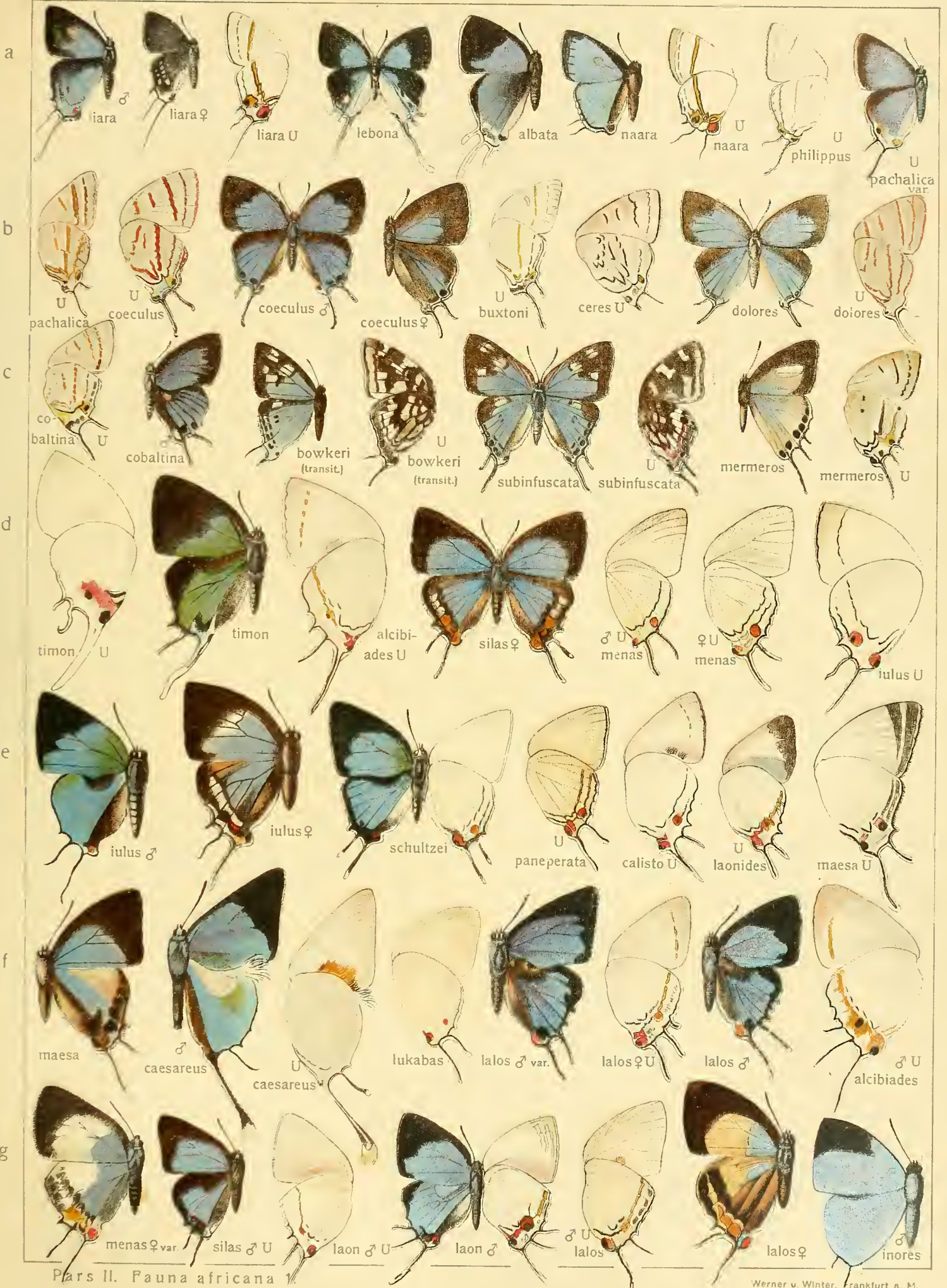
Pars II. Fauna africana 1.



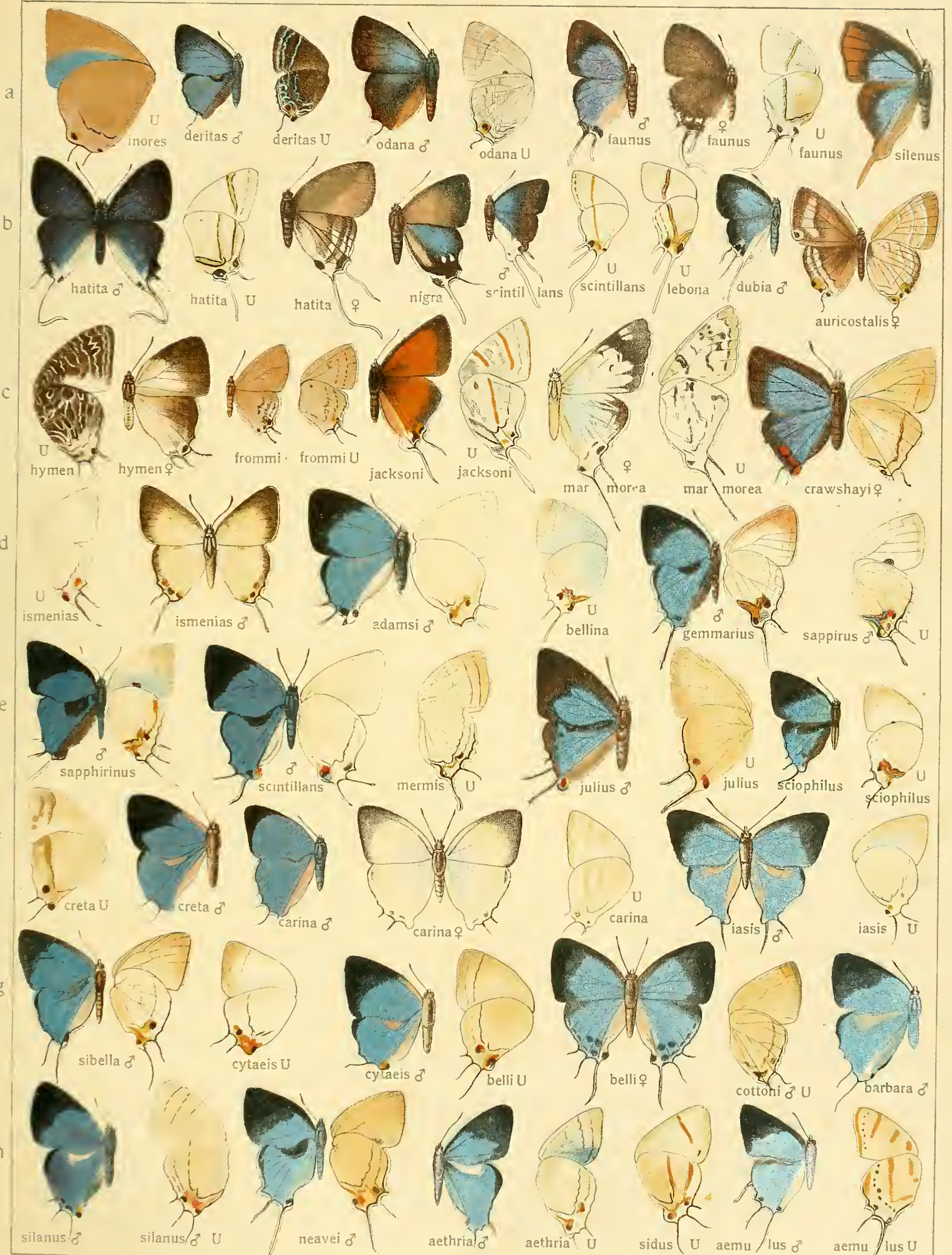
Pl. 11. Fauna africana 1.



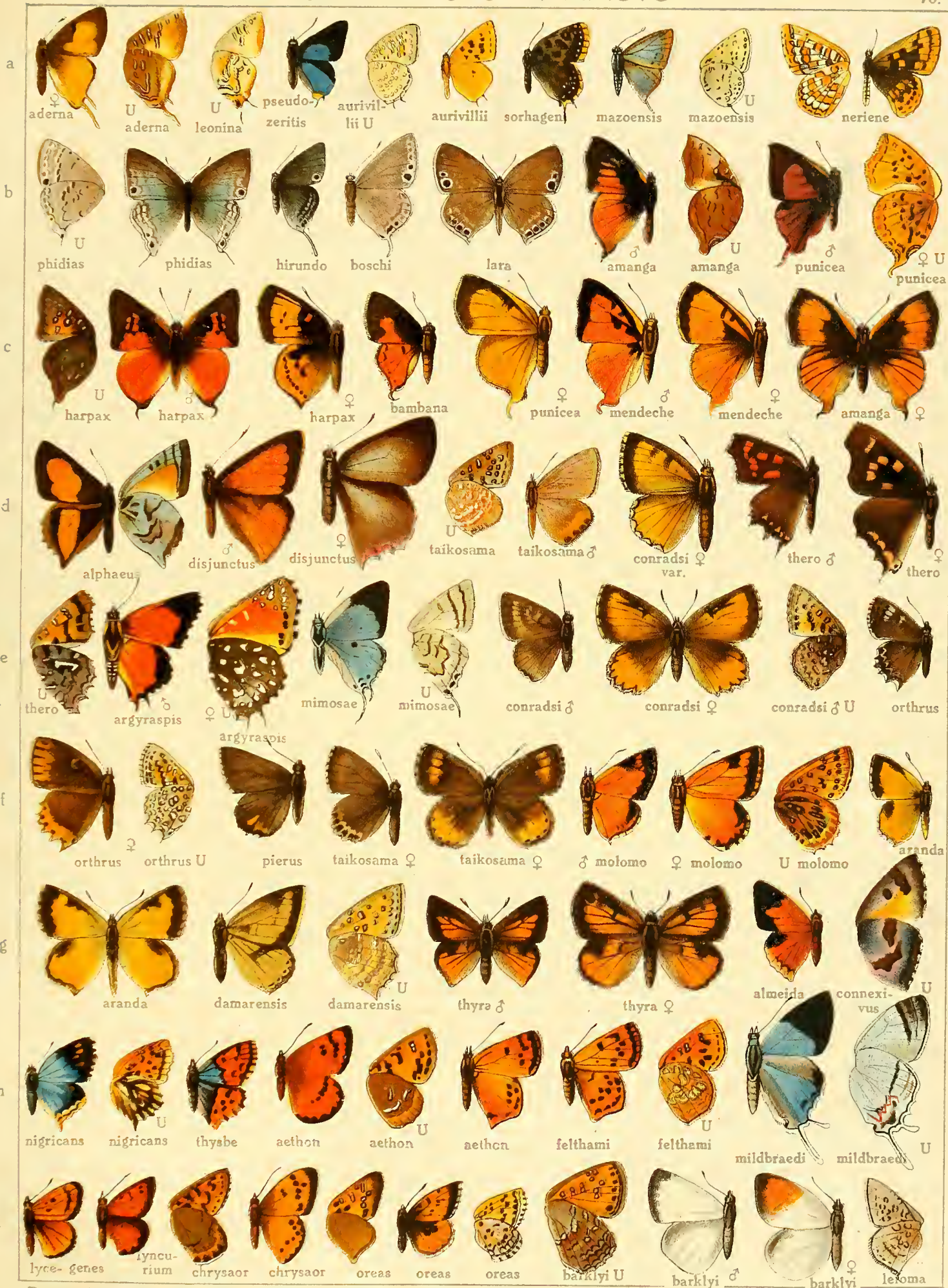
Pars II. Fauna africana 1.



HYPOLYCAENA - IOLAUS

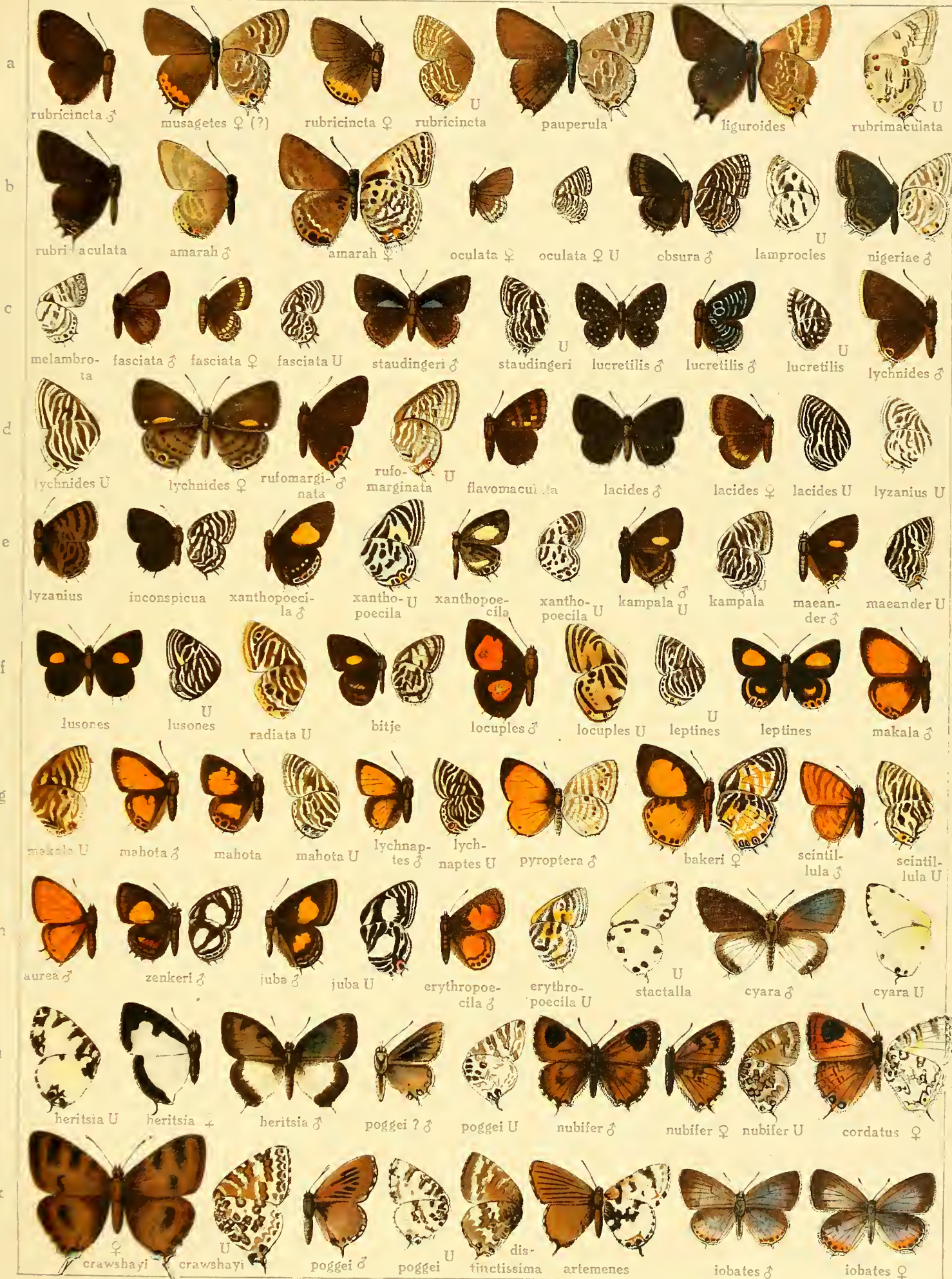


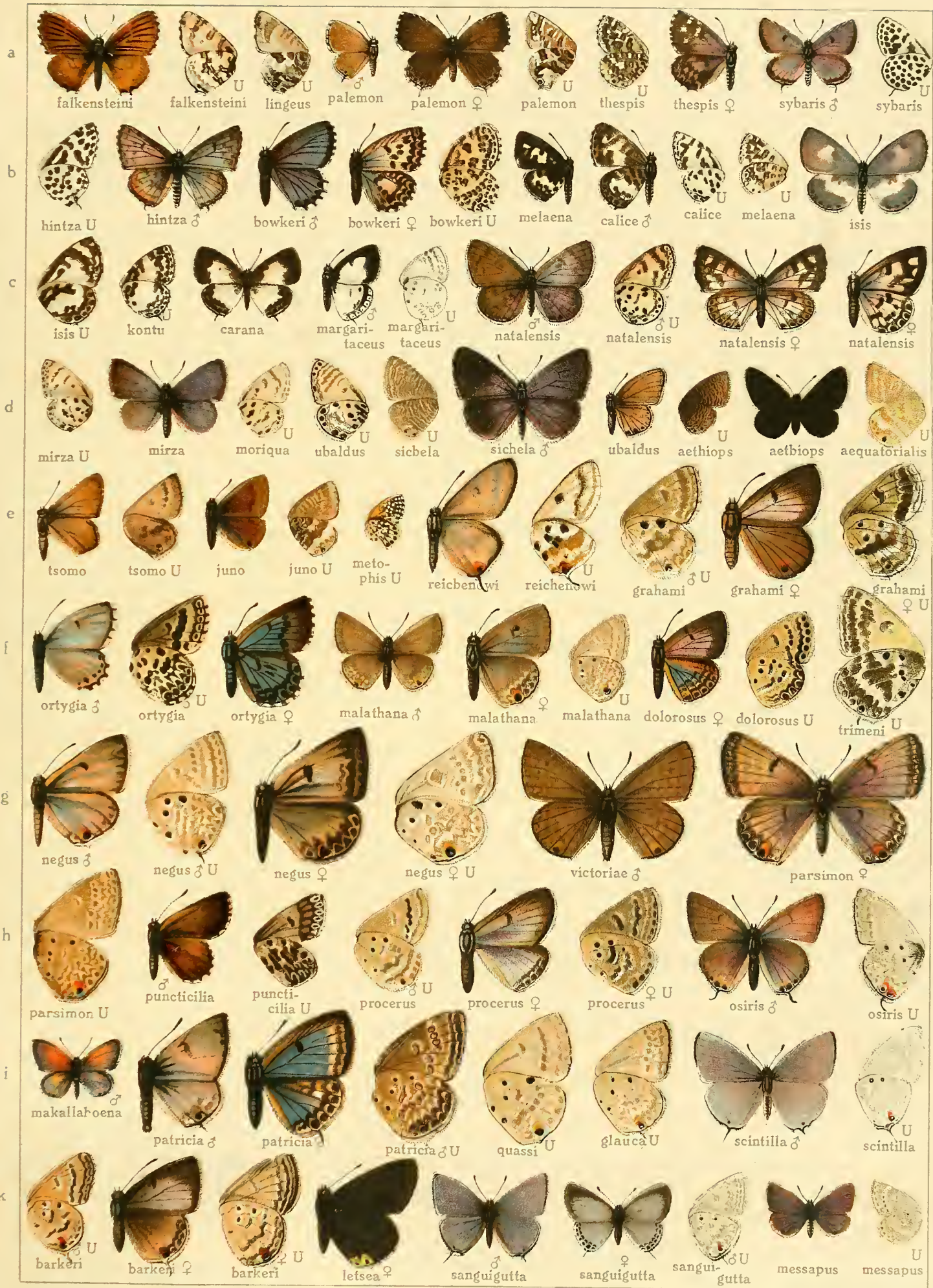




Pars II. Fauna africana 1.







Pars II. Fauna africana 1.

Werner u. Winter G. m. b. H., Frankfurt a. M.

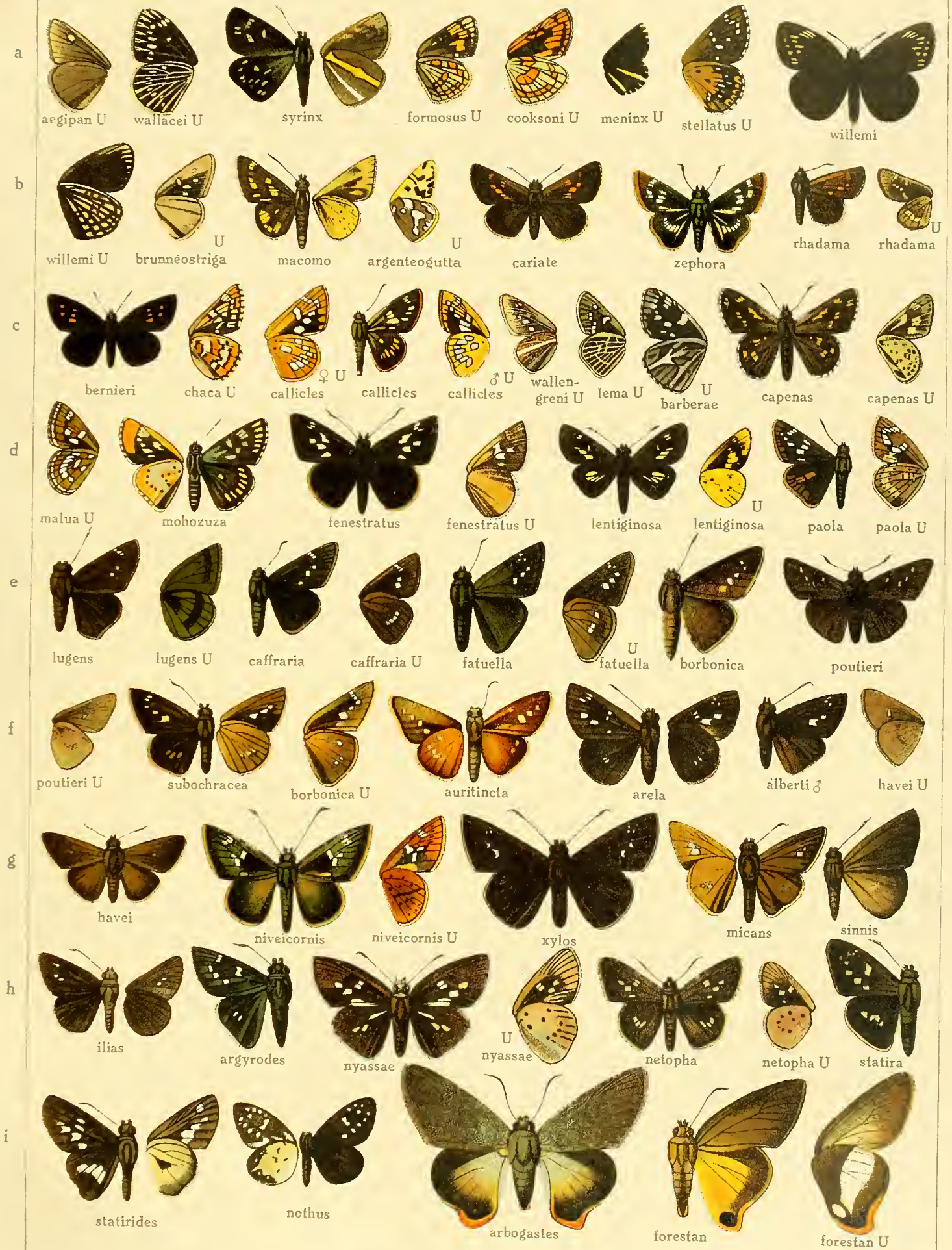


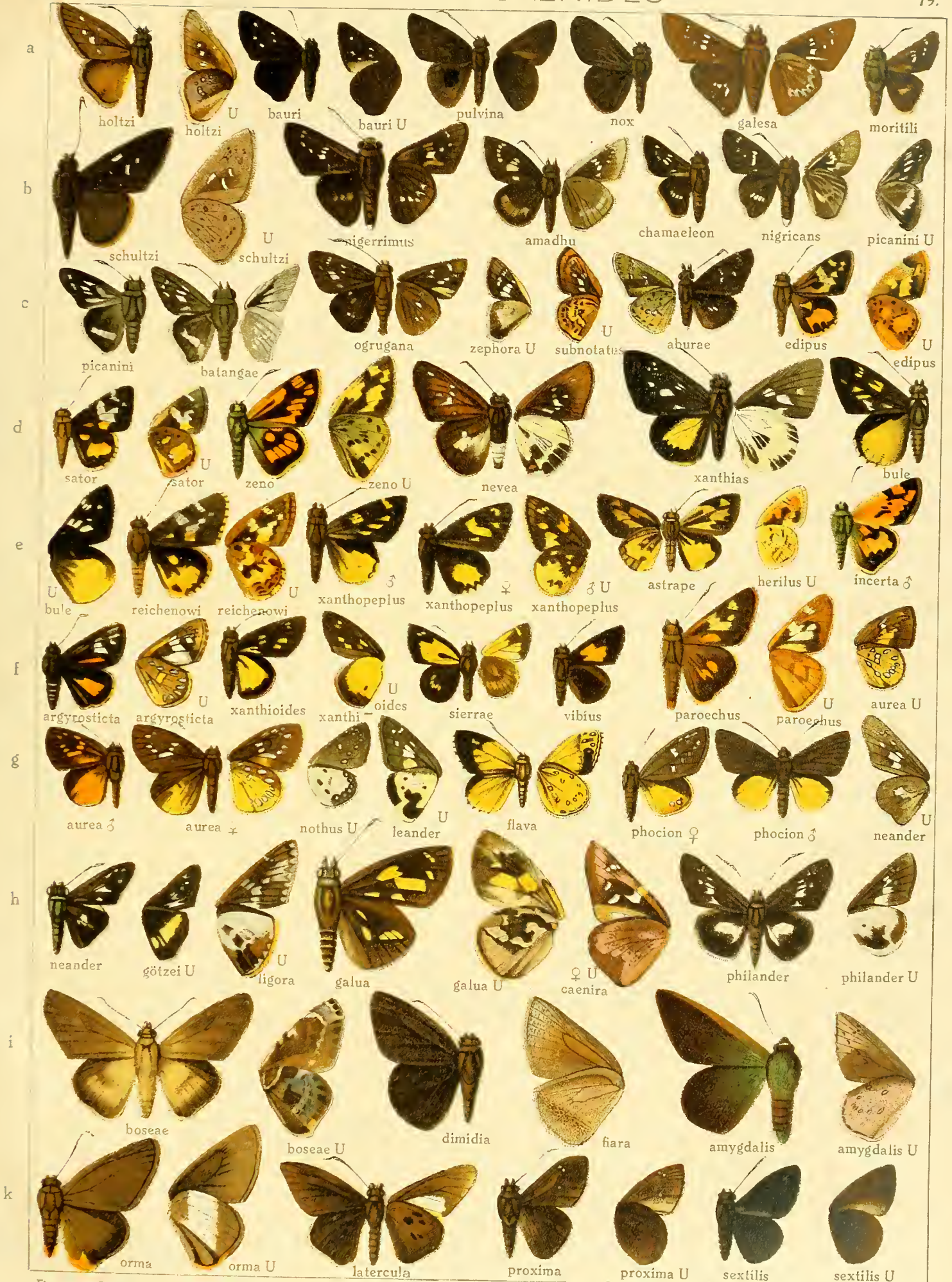
ABANTIS - RHOPALOCAMPTA











Pars II. Fauna Africana 1.

COENIDES - PTEROTEINON

XIII.



