

SPIXIANA	39	2	252	München, Dezember 2016	ISSN 0341-8391
----------	----	---	-----	------------------------	----------------

Scientific note

Taxonomic identity of two *Pseudocellus* from Eastern Cuba

(Arachnida, Ricinulei, Ricinoididae)

Rolando Teruel*

The taxonomic definition of the Cuban ricinulid *Pseudocellus paradoxus* (Cooke, 1972) is currently unsatisfactory: two other taxa formerly described as separate species (*Cryptocellus cubanicus* Dumitresco & Juvara-Bals, 1973 and *Cryptocellus mayari* Armas, 1977) were regarded as its junior synonyms (Armas, 1980), but then suggested to be valid (Teruel & Pérez 2003, Teruel & Armas 2008).

Recently, the present author succeeded in collecting new samples of all three taxa (topotypes included) and examining the types of two of them. This revealed that *C. cubanicus* and *C. mayari* are valid species of the genus *Pseudocellus* Platnick, 1980 (this was never formally established because the genus *Pseudocellus* was described shortly after the synonymies were published). Thus, the following nomenclatural changes are herein proposed: 1) *Cryptocellus cubanicus* Dumitresco & Juvara-Bals, 1973, **restored name** = *Pseudocellus cubanicus* (Dumitresco & Juvara-Bals, 1973), **new combination**; 2) *Cryptocellus mayari* Armas, 1973, **restored name** = *Pseudocellus mayari* (Armas, 1973), **new combination**.

These species will be fully redescribed in a forthcoming paper (R. Teruel, in prep.), but their main diagnostic differences are given here as follows: *P. cubanicus* n. comb. is distinguished from *P. mayari* and *P. paradoxus* by its more slender body and appendages, paler

coloration, male leg II tibia apically curved inwards and male copulatory apparatus different; *P. mayari* n. comb. is diagnosed from *P. cubanicus* and *P. paradoxus* by its tergites XI–XII shorter and wider, leg II femur more swollen, and male copulatory apparatus different. Most of these differences are evident in Figure 1.

References

- Armas, L. F. de 1977. Dos nuevas especies de *Cryptocellus* (Arachnida: Ricinulei) de Cuba. *Poeyana* 164: 1–11.
 -- 1980. Situación taxonómica de *Cryptocellus paradoxus* Cooke, 1972 (Arachnida: Ricinulei). *Poeyana* 212: 1–4.
 Dumitresco, M. & Juvara-Bals, I. 1973. *Cryptocellus cubanicus* n. sp. (Arachnida: Ricinulei). Premier représentant de la fam. Ricinuleidae de Cuba. Résultats des expéditions biospéologiques cubano-roumaines à Cuba. *Editura Academiei Republicii Socialiste România* 1: 259–275.
 Teruel, R. & Armas, L. F. de 2008. Nuevo *Pseudocellus* Platnick 1980 de Cuba oriental y nuevos registros de *Pseudocellus paradoxus* (Cooke 1972) (Ricinulei: Ricinoididae). *Boletín de la Sociedad Entomológica Aragonesa* 43: 29–33.
 -- & Pérez, Y. 2003. Distribución geográfica y variabilidad morfológica de *Pseudocellus paradoxus* (Cooke, 1972), con notas sobre su historia natural (Ricinulei: Ricinoididae). *Revista Ibérica de Aracnología*, 7: 177–182.

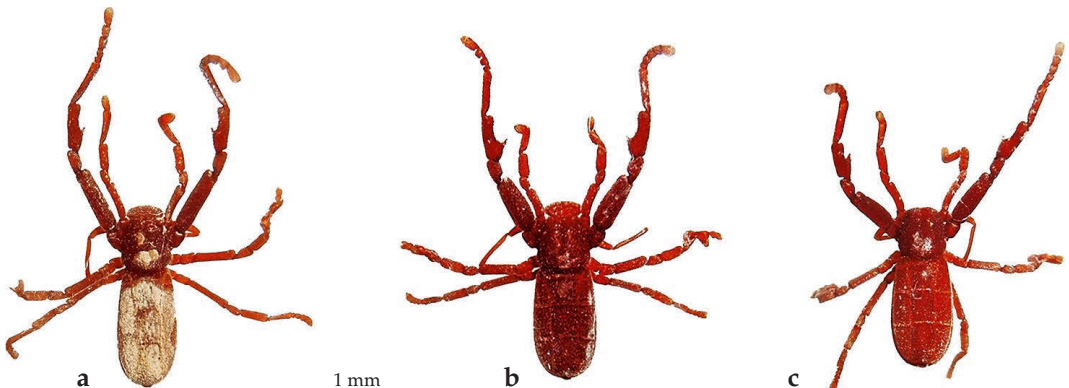


Fig. 1. Males of *P. cubanicus* n. comb. (a), *P. mayari* (b) and *P. paradoxus* (c).

* Rolando Teruel, Centro Oriental de Ecosistemas y Biodiversidad, Museo de Historia Natural "Tomás Romay", José A. Saco # 601, esquina a Barnada, Santiago de Cuba 90100, Cuba; e-mail: rteruel@bioeco.cu

ZOBODAT - www.zobodat.at

Zoologisch-Botanische Datenbank/Zoological-Botanical Database

Digitale Literatur/Digital Literature

Zeitschrift/Journal: [Spixiana, Zeitschrift für Zoologie](#)

Jahr/Year: 2016

Band/Volume: [039](#)

Autor(en)/Author(s): Teruel Rolando

Artikel/Article: [Scientific note Taxonomic identity of two Pseudocellus from Eastern Cuba \(Arachnida, Ricinulei, Ricinoididae\) 252](#)