

## PSEPHENIDAE:

### 2. Notes on the genus *Homoeogenus* WATERHOUSE (Coleoptera)

C.-F. LEE & P.-S. YANG

#### Abstract

A new species of the genus *Homoeogenus* WATERHOUSE, *H. elongatus* sp.n., is described from Yunnan Province, China. This species is easily distinguished from all known species by its elongate aedeagus. *Drapeus obscurus* PIC, 1923, is redescribed and transferred to the genus *Homoeogenus*.

**Key words:** Coleoptera, Psephenidae, Eubriinae, *Homoeogenus*, new species, new combination, China

#### Introduction

The genus *Homoeogenus* WATERHOUSE was recently revised by LEE & YANG (1993). Three previously described species, all from China, were known. A new species collected from Yunnan is described below.

#### Acronyms and terminology:

MHNP Muséum national d'Histoire naturelle, Paris  
NMW Naturhistorisches Museum, Wien

LE maximum length of elytron  
LP length of middle of pronotum  
WE maximum width of elytra  
WP maximum width of pronotum

#### *Homoeogenus elongatus* sp.n.

TYPE LOCALITY: Weishan, Dali, Yunnan, China.

TYPE MATERIAL. **Holotype** ♂: "CHINA: Yunnan, Dali, Weishan, Weibaoshan, VII. 1993, 2600-2800 m".  
**Paratypes**: 2 ♀ ♀, same data as holotype. Holotype and one paratype are deposited in the NMW; one paratype is deposited in the Department of Plant Pathology & Entomology, National Taiwan University, Taipei.

Male. Total length (LE + LP) 2.5 mm, total width (WE) 1.7 mm. Colouration black; prosternum and mesosternum yellowish brown. Prosternum similar to *H. chinensis* LEE & YANG; prosternal process tapering posteriorly, apex dilated. Mesosternum similar to *H. laurae* LEE & YANG; apex of mesosternal process feebly emarginate. Antenna (Fig. 2) pectinate from segments 4 to 10, segment 3 serrate, segments 4 to 7 with appendages progressively longer, segments 6 - 9 similar to each other, terminal segment with two small processes on outer margin. WP/LP 0 2.35; LE/WE 0 1.15; LP/LE 0 0.72.

Female. Total length (LE + LP) 3.3 - 3.5 mm ( $\bar{x}$  = 3.4 mm), total width (WE) 1.8 mm. Colouration similar to male. Antenna (Fig. 3) similar to *H. laurae*, but segments 3 and 4 relatively shorter. Maxillary palpus (Fig. 4) similar to that of *H. chinensis*, but terminal segment distinctly shorter,

relative lengths of segments 2 - 4 about 1 : 0.4 : 0.7. Labial palpus (Fig. 5) similar to *H. punctatum*, but terminal segment more dilated and shorter, relative lengths of segments 2 - 3 about 1 : 0.8. Apices of maxillary and labial palpi very feebly emarginate. Prosternum similar to male of *H. laurae*, prosternal process not dilated. Mesosternum similar to male, apex of mesosternal process moderately emarginate. WP/LP = 2.13 - 2.37 ( $x = 2.25$ ); LE/WE = 1.20 - 1.25 ( $x = 1.22$ ); WP/WE = 0.67 - 0.72 ( $x = 0.70$ ) ( $n = 2$ ).

Aedeagus (Fig. 1). Apical half of penis very slender; penis abruptly expanded near middle, then gradually narrowed towards base. Parameres elongate, but not surpassing apex of penis; apex with process on inner side, directed mediad. Lateral apices of basal piece recurved.

Diagnosis. This species is easily distinguished from the other species by its black colouration and its elongate parameres.

Etymology. The species is named in reference to the elongate aedeagus.

### *Homoeogenus obscurus* (Pic) comb.n.

*Drupeus obscurus* Pic 1923: 12.

TYPE LOCALITY: "Kiautschau" [= Jiaozhou], Shandong, east China.

TYPE MATERIAL: **Lectotype** ♀ (by present designation) : "Kiautschau China \ TYPE \ TYPE \ Muséum Paris Coll. M. Pic \ *Drupeus obscurus* n sp", deposited in the MHNP. **Paralectotypes**: 2 ♀♀ labelled as lectotype (MHNP).

ADDITIONAL MATERIAL EXAMINED:

2 ♂♂ (MHNP, NMW): with the same locality labels as syntypes of *H. obscurus*. They were determined (? by Pic) as *H. punctatum*.

Male: Total length (LE + LP) 2.9 mm, total width (WE) 1.9 mm. Colouration blackish brown; antennae and legs brown; two basal segments of antenna paler. Sides of pronotum explanate. Antenna (Fig. 7) pectinate from segments 3 to 10; segment 3 with distinctive appendage; segment 4 similar to segment 5; segment 6 slightly longer and more strongly pectinate than segment 5; segments 6 - 9 similar to each other, segments 10 and 11 missing. WP/LP = 2.52; LE/WE = 1.19; WP/WE = 0.79.

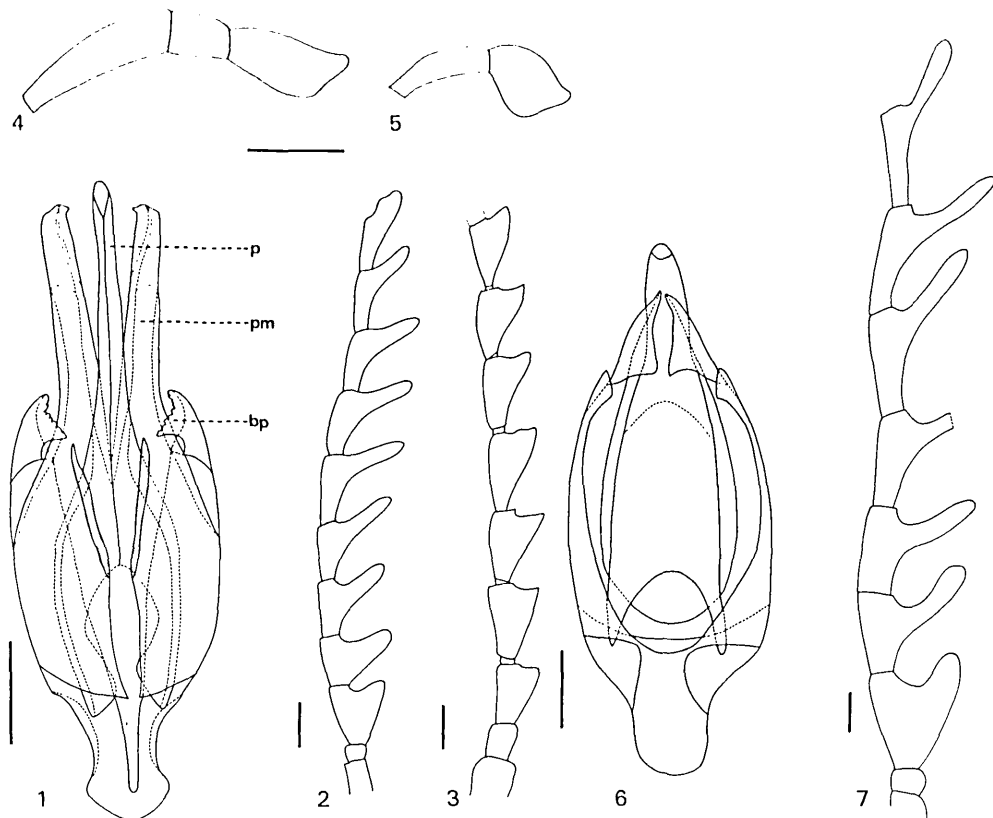
Female: Total length (LE + LP) 3.2 mm, total width (WE) 2.2 mm. Colouration blackish brown. Antenna and legs missing. WP/LP = 2.60; LE/WE = 1.14; WP/WE = 0.78.

Diagnosis: *Homoeogenus elongatus* and *H. obscurus* differ from other species by their black colouration. *Homoeogenus obscurus* is characterized by its long antennae and presence of a prominent appendage on antennal segment 3.

Aedeagus (Fig. 6). Apex of penis narrow; penis abruptly expanded near apical third, then gradually dilated towards base. Apices of parameres recurved. Lateral apices of basal piece slightly recurved.

### Acknowledgements

We are greatly indebted to Dr. Manfred A. Jäch (Vienna) for sending the new species and for enabling us to examine the types of *Homoeogenus obscurus*. We also express our sincere thanks to Dr. Harley P. Brown (Oklahoma) for reading the manuscript, and to Mr. Kwok-Ching Wong for the line drawings.



Figs. 1 - 4: *Homoeogenus elongatus*: 1) aedeagus, dorsal aspect; (bp) basal piece; (p) penis; (pm) paramere; 2) male antenna; 3) female antenna (last two segments not illustrated); 4) maxillary palpus; 5) labial palpus. Scale = 100  $\mu$ m.

Figs. 6 - 7: *Homoeogenus obscurus*: 6) aedeagus, dorsal aspect; 7) male antenna (last two segments not illustrated).

### References

- LEE, C.-F. & YANG, P.-S. 1993: A revision of the genus *Homoeogenus* Waterhouse with notes on the immature stages of *H. laurae* sp.n. (Coleoptera: Psephenidae: Eubriinae). - *Systematic Entomology* 18: 351-361.
- PIC, M. 1923: Nouveautés diverses. - *Mélanges exotico-Entomologiques* 40: 1-32.

Chi-Feng LEE & Ping-Shih YANG

*Department of Plant Pathology and Entomology, National Taiwan University, Taipei, Taiwan*

# ZOBODAT - [www.zobodat.at](http://www.zobodat.at)

Zoologisch-Botanische Datenbank/Zoological-Botanical Database

Digitale Literatur/Digital Literature

Zeitschrift/Journal: [Water Beetles of China](#)

Jahr/Year: 1995

Band/Volume: [1](#)

Autor(en)/Author(s): Lee Chi-Feng, Yang Ping-Shih

Artikel/Article: [Psephenidae: 2. Notes on the genus Homoeogenus Waterhouse \(Coleoptera\) 355-357](#)