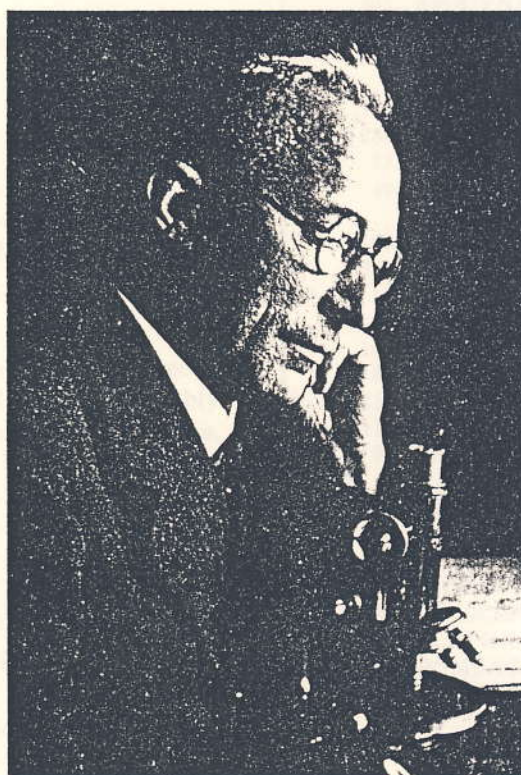


D.
WIMMER

FRANZ ELFRIED WIMMER 1881-1961



(Schmidt photo)

With the Hawaiian lobelia specialist Dr. J. F. Rock residing in the Orient, our *Lobeliaceae* were consistently mailed to Dr. F. E. Wimmer, monographer of the Family for "*Das Pflanzenreich*." This involved lively correspondence for over a quarter of a Century, and a visit of the *kane* writer to the Naturhistorischen Museum in Vienna to meet Wimmer there among his specimens.

Franz E. Wimmer, son of a Waldviertel farmer, was born November 30, 1881 in Niederschrems, Austria. He early showed interest in insects and particularly plants. After studying in Vienna and Graz, he began his teaching career at St. Georgs-Kolleg, in the then city of Constantinople, during his spare time enriching his biological collections with trips in Asia Minor. Ordained to the priesthood July 21, 1907, he first was Chaplain in Vienna, later Priest in Wampersdorf, and for many years thereafter religious Rector in the "Elisabeth-Spital der Barmherzigen Schwestern" in Vienna. He retired in 1958.

D
WIMMER

In spite of religious duties, Dr. Wimmer accomplished monumental work in Botany, helping with the writing of a "Flora of Peru," "Flora de Madagascar," and a Flora of West Africa and of South America. In 1960 he was writing a book about the *Cyphiaceae*. In 1944 he was elected Correspondent of the Natural History Museum of Vienna, which institution had stimulated him to produce his *magnus opus*, the "*Campanulaceae-Lobelioideae*" of the World. In the bombing of the botanical museum in Berlin by our fliers during World War II, the magnificent collection of *Phanerogams* was largely destroyed. The *Lobeliaceae*, on loan to Wimmer, escaped the holocaust.

Wimmer himself drew many of the Hawaiian *Lobeliaceae* for this Flora in pencil; due to the infirmities of age employing his nephew Helmut Schmidt to ink them in for the Honolulu printer. In his letter of December 1960 to us, in which he acquainted us of his second and unsuccessful operation for a malignancy, he quoted the dialect poet Stelzhammer:

"Freud und Leid hat alls sein' Zeit,
Wie 's kommt, so geht 's und kein 's versteht 's.
Aufs Hirn kannst hammern,
Ans Herz kannst schlagen;
Das Gscheidest ist: Geduld'g tragen."

It was Dr. Wimmer's aim to settle his affairs and to finish the Supplement of his great work. The manuscript was completed by March 1961, and in the hands of the printer the following month.

He signed his letters F. or F. E. Wimmer or Wimer, the horizontal line over the m denoting its duplication.

He somewhat agreed with the writers' suspicion that the species of *Lobelia* s.l., of Hawaii, originating in the Archipelago from probably a single introduction, deserve segregation in a distinct, endemic genus, even suggesting the man for whom the latter should be named. Because of Dr. Wimmer's unexcelled knowledge of the *Lobeliaceae*, we take the liberty of establishing the genus *Neowimmeria* for our endemic *Lobelia* relatives, a name we had suggested to him as more eminently appropriate in our correspondence of October 27, 1960. This modification of Dr. Wimmer's name is necessary because the genus *Wimmeria* (*Celastraceae*) had been published over a hundred years ago.

April 10 Dr. Rock wrote Dr. Wimmer that he had named a new *Trematolobelia* in his honor. We hope our gentle friend learned of this discovery before his death May 2, 1961 in the same hospital in which he had been active so many years. He was laid to rest eight days later in Jedlese Cemetery.

(Degener & Degener, 11/15/62)

(Aided by National Science Foundation)

Recent Families

Enumerated according

(Revised, with some exceptions, to conform)

- 328. ACANTHACEAE
- 208. ACERACEAE
- 251. ACHARIACEAE
- 226. ACTINIDIACEAE
- 334. ADOXACEAE
- 207. AEXTOXICACEAE
- 116. AIZOACEAE
- 183. AKANIACEAE
- 271. ALANGIACEAE
- 42. ALISMATACEAE
- 112. AMARANTHACEAE
- 70. AMARYLLIDACEAE
- 195. ANACARDIACEAE
- 256. ANCISTROCLADACEAE
- 132. ANNONACEAE
- 305. APOCYNACEAE
- 40. APONOGETONACEAE
- 200. AQUIFOLIACEAE
(Illicaceae)
- 51. ARACEAE
- 281. ARALIACEAE
- 27. ARAUCARIACEAE
- 49. ARECACEAE
(Palmae, Palmaceae)
- 107. ARISTOLOCHIACEAE
- 306. ASCLEPIADACEAE
- 17b. ASPIDIACEAE
- 17d. ASPLENIACEAE
- 106. BALANOPHORACEAE
- 88. BALANOPSIDACEAE
- 214. BALSAMINACEAE
- 118. BASELLACEAE
- 91. BATAACEAE
(Batidaceae)
- 255. BEGONIACEAE
- 126. BERBERIDACEAE
- 93. BETULACEAE
- 321. BIGNONIACEAE
- 241. BIXACEAE
- 17c. BLECHNACEAE
- 222. BOMBACACEAE

(Degener & Degener, 3/15/63, to replace previ)