

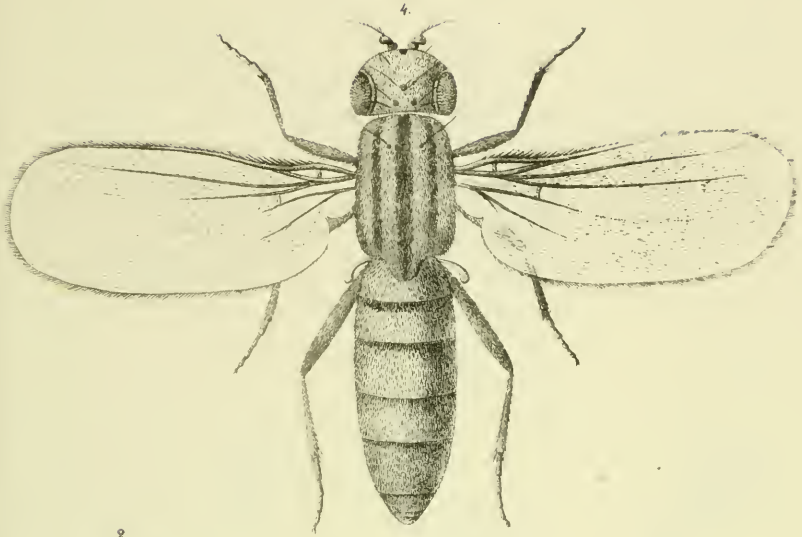
Fig. 1-5. *Phytomyza albiceps* Metz.

Aus d. k. k. Hof- u. Staatsdruckerey



♀

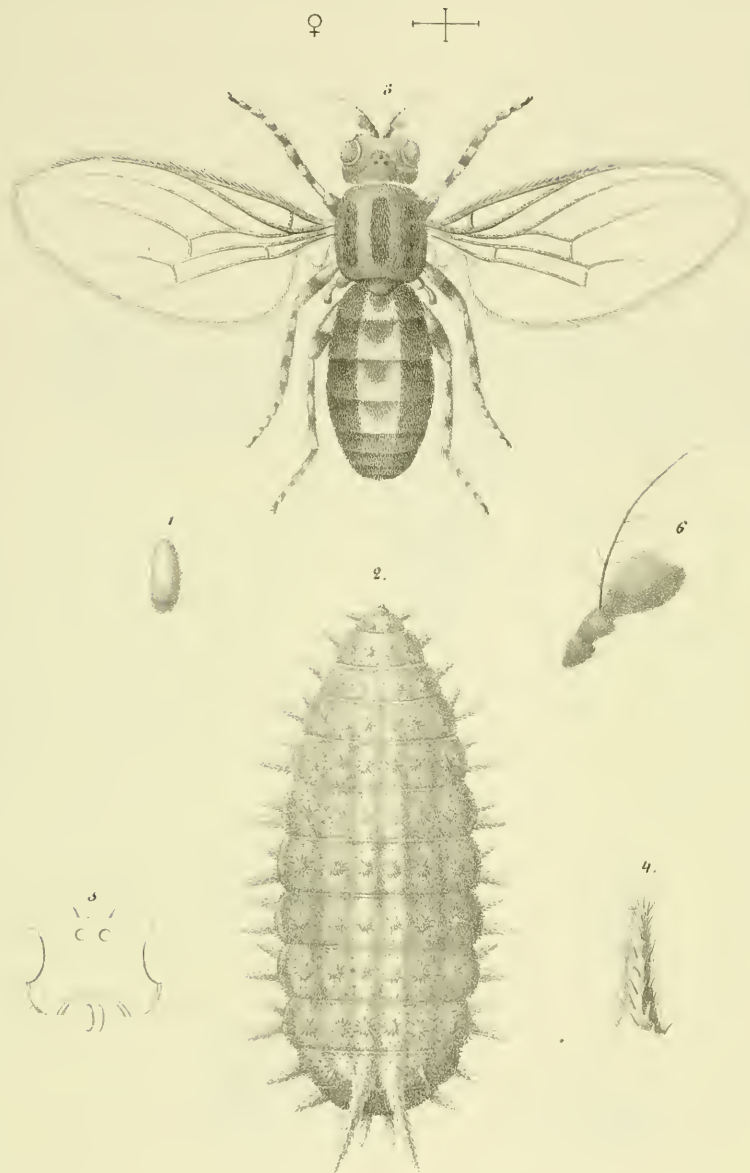
♂



*Fig. 1-3. Notiphila flavicola Metz.*

aus dem k.k. Hof- u. Stat.-Museum.

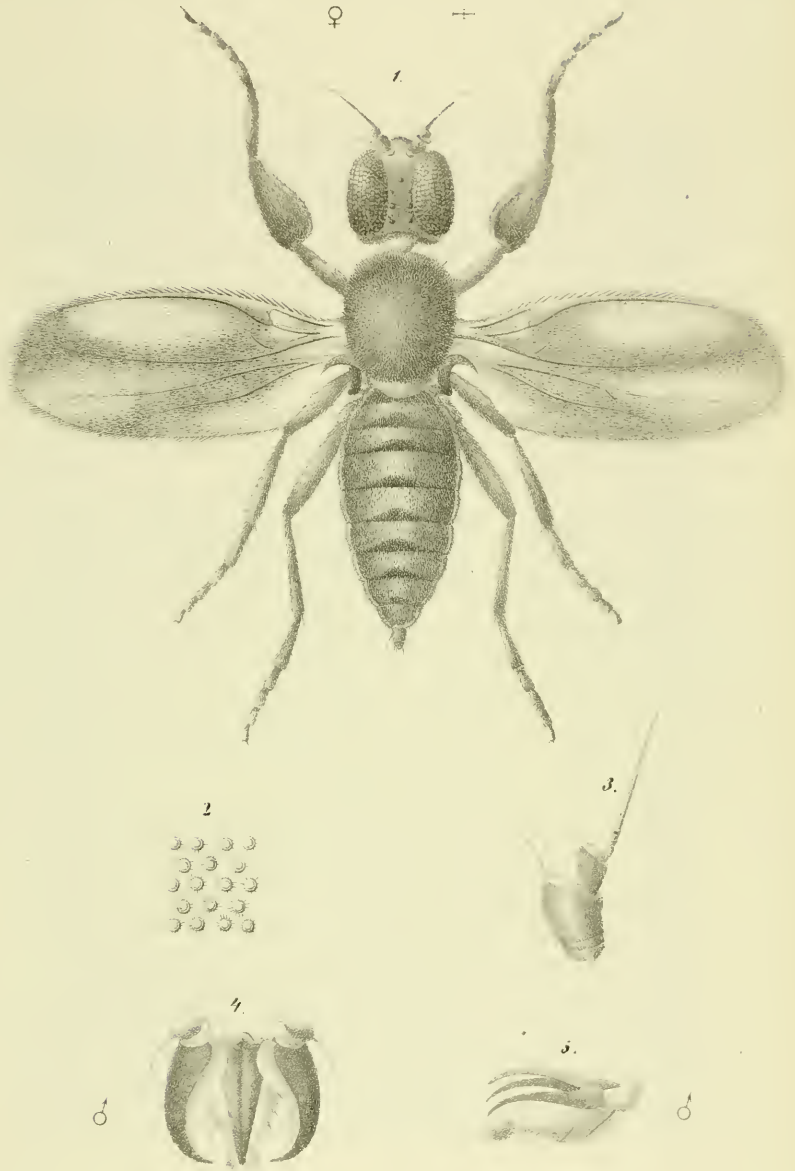




*Fig. 1-6. Drosophyla variegata Fallén*

Aus d. k.k. Hof- u. Staatsdruckerei.





*Fig. 1-5. Hemerodromita femorata Heeg*

Ans. d. k. Hof u. Staatsdruckerei