

On the occurrence of *Carex randalpina* B.WALLNÖFER (Cyperaceae) in Hungary

A. Mesterházy*, G. Király* & B. Wallnöfer**

Abstract

The species *Carex randalpina* B.WALLN. (Cyperaceae) is here reported for the first time from Hungary (from Zala County in the western part of the country).

Key words: *Carex randalpina*, Cyperaceae, Flora of Hungary.

Zusammenfassung

Die Art *Carex randalpina* B.WALLN. (Cyperaceae) wird hier erstmals für Ungarn genannt, und zwar aus dem Komitat Zala im Westen des Landes.

The sedge *Carex randalpina* B.WALLN. described in 1994, has been documented in the foreland of the eastern Alps of Germany, Austria, Slovenia (WALLNÖFER 1993, 1994, 2006, MARTINČIČ et al. 1999, MARTINČIČ 2007), Croatia (STANČIĆ 2009, 2010) and north-eastern Italy (PROSSER 1998, ARGENTI & RODATO 2004, ARGENTI & LASSEN 2004, BUSNARDO 2004, COSTALONGA 2006). It has not been recorded from Hungary so far (KIRÁLY 2009).

This species has been discovered by the first author from 2005 onwards in the following localities in south-western Hungary (Zala County; see fig. 2): Becsehely (valley of "Borsfai-patak"), 161 m, (9566/2), 28 May 2005, A. Mesterházy AMHU 1565 [Herb. Mesterházy]; – Lisperzentadorján (south of the village, along "Szentadorjáni-patak"), 195 m, (9466/4), 2 June 2008, A. Mesterházy AMHU 3677 [Herb. Mesterházy]; – Kányavár, on wet meadows along the road, 46°33'53" N, 16°41'43" E, 169 m, (9466/1), 1 June 2009, A. Mesterházy 1-2009 [W 7×], (only this collection has been seen by the second and third author!). – Observations only (no specimens collected): Bánokszentgyörgy (between the village and Szentlisló), 194 m, (9466/2), 27 May 2005; – near the village of Bázakerettye, (9466/3); – Várfölde (along "Alsó-Válicka-patak"), 176 m, (9466/4), 2 June 2008; – near the village of Borsfa, (9466/4); – Zajk (north of the settlement, along "Zajki-patak"), 193 m, (9566/1), 15 June 2010; – Eszteregnye (north of the settlement), 192 m, (9567/1), 28 May 2009.

In Hungary, the species occurs in stream valleys of low hilly areas, at an altitude between 160 and 200 meters. It is a characteristic stand-forming species of tall sedge

Attila Mesterházy, Dr. Gergely Király, West Hungarian University, Department of Botany, Bajcsy-Zs. u. 4., 9400 Sopron, Hungary. – amesterhazy@gmail.com – gkiraly@emk.nyme.hu

** Dr. Bruno Wallnöfer, Naturhistorisches Museum Wien, Botanische Abteilung, Burgring 7, 1010 Wien, Austria. – bruno.wallnoefer@nhm-wien.ac.at

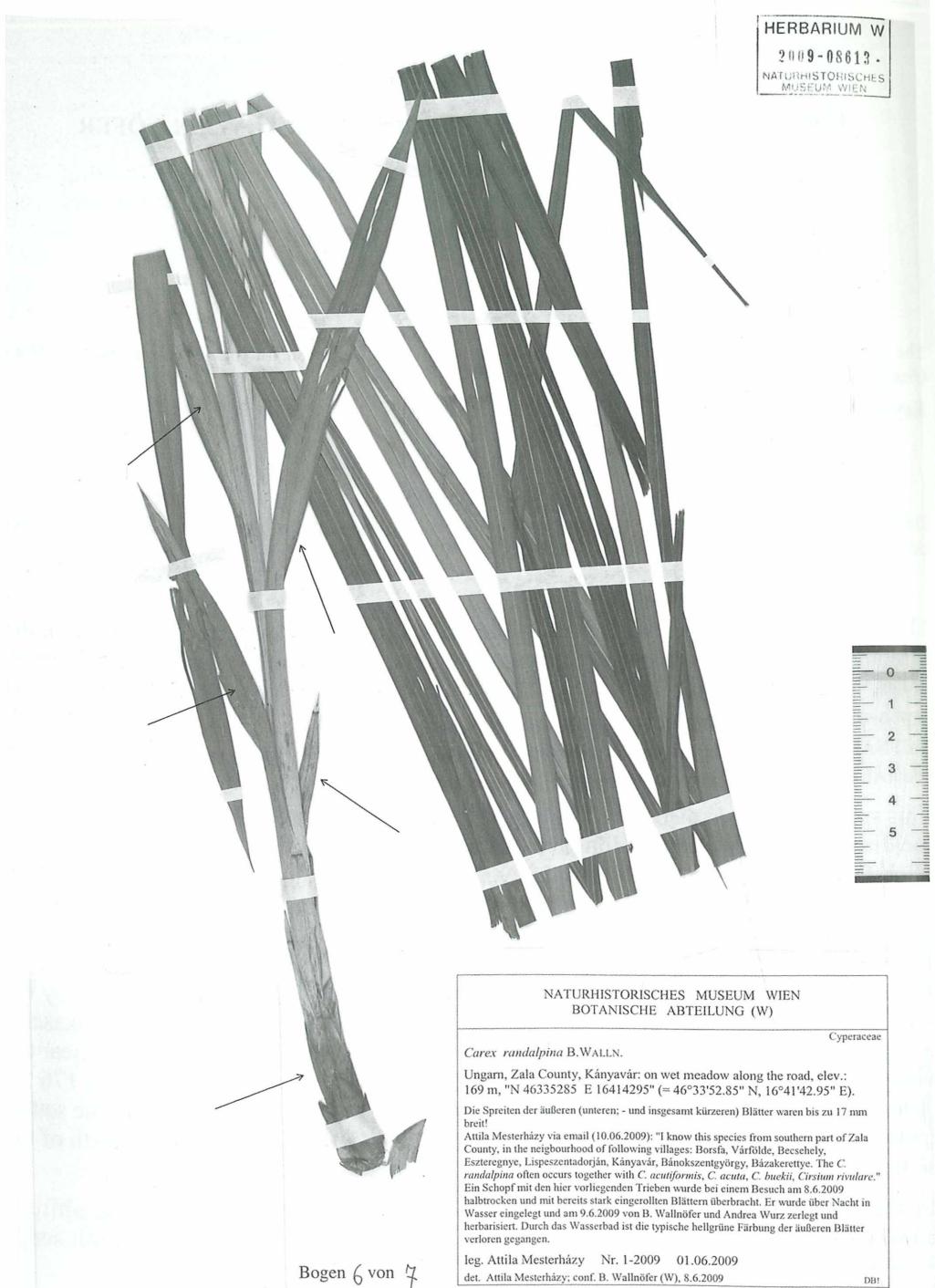


Fig. 1: *Carex randalpina* B.WALLN. (Mesterházy 1-2009). The arrows indicate those leaves significant for the identification of the species (for further details see the diagram in WALLNÖFER 1993: 725).

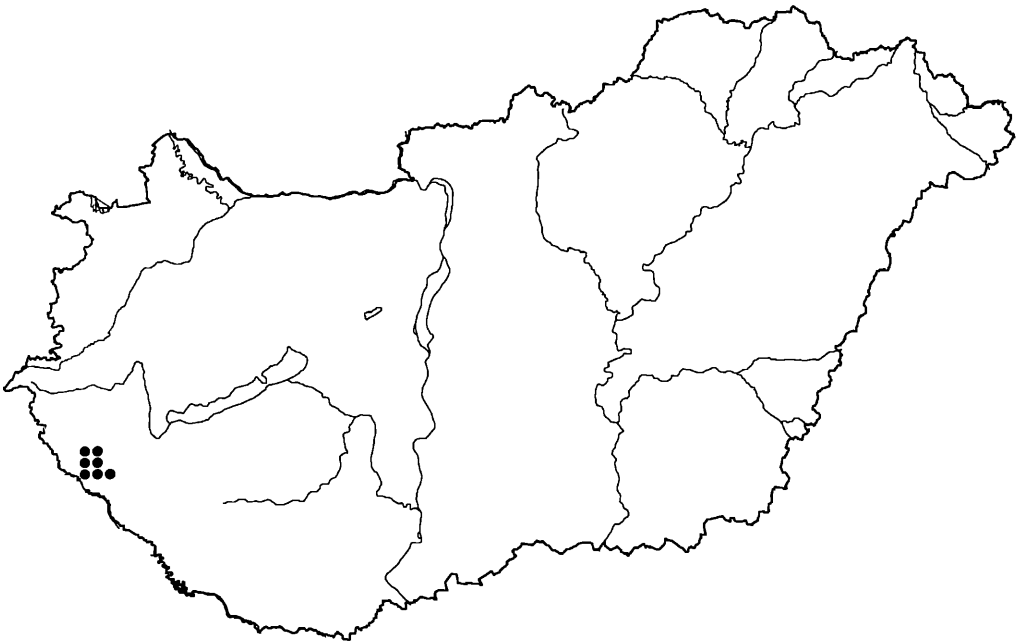


Fig. 2: Distribution of *Carex randalpina* B. WALLN. in Hungary (original: G. Király).

communities developed on former hayfields. It is, however, present also in alder gallery forest edges, forming a mosaic with tall herb communities. In its relatively homogeneous stands only few other species are present (*Filipendula ulmaria*, *Lythrum salicaria*, *Cirsium rivulare*, *Lycopus europaeus*) and the species pools of the stands are similar to those of the tall sedge communities composed of other creeping sedges (in this region *Carex acutiformis*, *Carex buekii*). The occurrence of *Carex randalpina* in the region is analogous to the presence of species of more montane distribution in the nearby area (e.g., *Anthriscus nitida*, *Trollius europaeus*, *Gagea spathacea*). As a historical addition to the discovery, it is worth mentioning that due to the agricultural recession starting at the beginning of the 1990s, the livestock population of the area decreased drastically and most humid meadows in the stream valleys were abandoned. Here, with the end of the traditional meadow use (mowing, grazing) tall herb community species spread and parallel to this, tall sedge species previously undetected or regarded as rare (*C. buekii*, *C. randalpina*) appeared.

Acknowledgements

I wish to thank Walter Till (WU) for critically reading the manuscript and Ines M. Ternbach (Vienna) for correcting the English.

Literature

ARGENTI C. & C. LASEN, 2004: Lista rossa della flora vascolare della provincia di Belluno. – Belluno: ARPAV

- ARGENTI C. & RODATO S., 2004: Note floristiche per la Provincia di Treviso, con particolare riferimento al Vittoriese. – *De Rerum Natura*, quaderni del museo di storia naturale e archeologia, Montebelluna 2: 55–70.
- BUSNARDO G., 2004: Biotopi umidi relitti nei Colli Asolani (TV): catalogazione e note floristiche. – *De Rerum Natura*, quaderni del museo di storia naturale e archeologia, Montebelluna 2: 7–53.
- COSTALONGA S., 2006: 1198. *Carex randalpina* B.WALLN. (Cyperaceae). – In: Notulae alla checklist della flora vascolare italiana 2 (1192–1266). – *Inform. Bot. Ital.* 38: 193.
- KIRÁLY G. (ed.), 2009: Új magyar fűvészkönyv. Magyarország hajtásos növényei. Határozókulcsok. – ANP Igazgatóság, Jósvafő, 616 pp.
- MARTINČIČ A., 2007: 80. *Carex randalpina* B.WALLN. Prvo nahajališče v dinarskem fitogeografskem območju. The first locality in dinaric phytogeographical region. – In: *Notulae ad floram Sloveniae*. – *Hladnikia* 20: 28–31.
- MARTINČIČ A., WRABER T., JOGAN N., RAVNIK V., PODOBNIK A., TURK B. & VREŠ B., 1999: Mala flora Slovenije. – Ljubljana: Tehniška založba Slovenije.
- PROSSER F., 1998: *Carex randalpina* B.WALLNÖFER (Cyperaceae) nell'Italia Nord-Orientale. – *Webbia* 53: 31–43.
- STANČIČ Z., 2009: The species *Carex randalpina* B.WALLN. and association *Filipendulo ulmariae-Caricetum randalpiniae* ass. nov. hoc loco in Croatia. – *Nat. Croat.* 18: 353–366.
- STANČIČ Z., 2010: Marshland vegetation of the class *Phragmito-Magnocaricetea* in northwest Croatia (Krapina river valley). – *Biologia* 65: 39–53.
- WALLNÖFER B., 1993: Die Entdeckungsgeschichte von *Carex randalpina* B.WALLNÖFER spec. nov. (= "*C. oenensis*") und deren Hybriden. – *Linzer Biol. Beitr.* 25: 709–744.
- WALLNÖFER B., 1994: Über neue Vorkommen von *Carex randalpina* B.WALLNÖFER in Slowenien und der Schweiz. – *Linzer Biol. Beitr.* 26: 855–860.
- WALLNÖFER B., 2006: Die Verteilung der Stomata auf den Laubblättern als wichtiges diagnostisches Merkmal zur Unterscheidung der Arten und Hybriden in der *Carex acuta*- und *C. rostrata*-Verwandschaft (Cyperaceae). – *Neilreichia* 4: 195–208.

ZOBODAT - www.zobodat.at

Zoologisch-Botanische Datenbank/Zoological-Botanical Database

Digitale Literatur/Digital Literature

Zeitschrift/Journal: [Annalen des Naturhistorischen Museums in Wien](#)

Jahr/Year: 2010

Band/Volume: [112B](#)

Autor(en)/Author(s): Mesterházy Attila, Király Gergely, Wallnöfer Bruno

Artikel/Article: [On the occurrence of *Carex randalpina* B. Wallnöfer \(Cyperaceae\) in Hungary. 177-180](#)