

Additamenta ad Typos Endresianos Orchidacearum Costaricae

F. Pupulin*, C. Ossenbach**, R. Jenny*** & E. Vitek****

Abstract

When the orchid material collected in Costa Rica by A.R. Endrés was typified by PUPULIN et al. (2010), four taxa were overlooked. They are treated here. *Masdevallia gracilenta* and *Polystachya cingulata* are lectotypified.

Key words: Orchidaceae, typification, Auguste R. Endrés, Costa Rica, Reichenbach Herbarium, Naturhistorisches Museum Wien.

Introduction

During the years 2007–2009, as a result of a cooperative project between the University of Costa Rica, the Andean Orchids Research Center of the University Alfredo Pérez Guerrero of Quito (Ecuador), the Naturhistorisches Museum of Vienna, and the Jany Renz Herbarium at the University of Basel, all the orchid materials by Auguste R. Endrés conserved in the Reichenbach Herbarium at W, including the specimens he collected in Costa Rica as well as his drawings, descriptions and notes, were digitized and made available through Virtual Herbaria (<http://herbarium.univie.ac.at/database/search.php>). The critical analysis of these materials, aimed at the typification of Endrés' plants, was published in 2010 (PUPULIN et al. 2010). However, four orchid species based on collection by Endrés were overlooked at that time, and they are discussed here.

Results

When the four species treated hereafter are included, the total number of Orchidaceae based on types collected by Endrés is of 112 species and two varieties. They were all originally collected in Costa Rica between the end of 1866 and the first months of 1874 (OSSENBACH et al. 2010). The first orchid species to be described on materials collected by Endrés was published in 1870 (REICHENBACH 1870) and the last just in the two last years (HÁGSATER & SÁNCHEZ-SALDAÑA, 2009; PUPULIN & BOGARÍN 2010).

* Franco Pupulin, Lankester Botanical Garden, University of Costa Rica. P.O. Box 302-7050 Cartago, Costa Rica; Harvard University Herbaria, Cambridge, MA, U.S.A.; Marie Selby Botanical Gardens, Sarasota, FL, U.S.A.; Andean Orchids Research Center, University Alfredo Pérez Guerrero, Quito, Ecuador – franco.pupulin@ucr.ac.cr

Carlos Ossenbach, Andean Orchids Research Center, University Alfredo Pérez Guerrero, Quito, Ecuador – caossenb@racsca.co.cr

Rudolf Jenny, Schweizerische Orchideenstiftung am Herbarium Jany Renz, Botanisches Institut der Universität Basel, Schönbeinstrasse 6, CH-4056 Basel, Schweiz – rjorchid@gmx.ch

**** Ernst Vitek, Naturhistorisches Museum, Botanische Abteilung, Burgring 7, A-1010 Wien, Austria – ernst.vitek@nhm-wien.ac.at

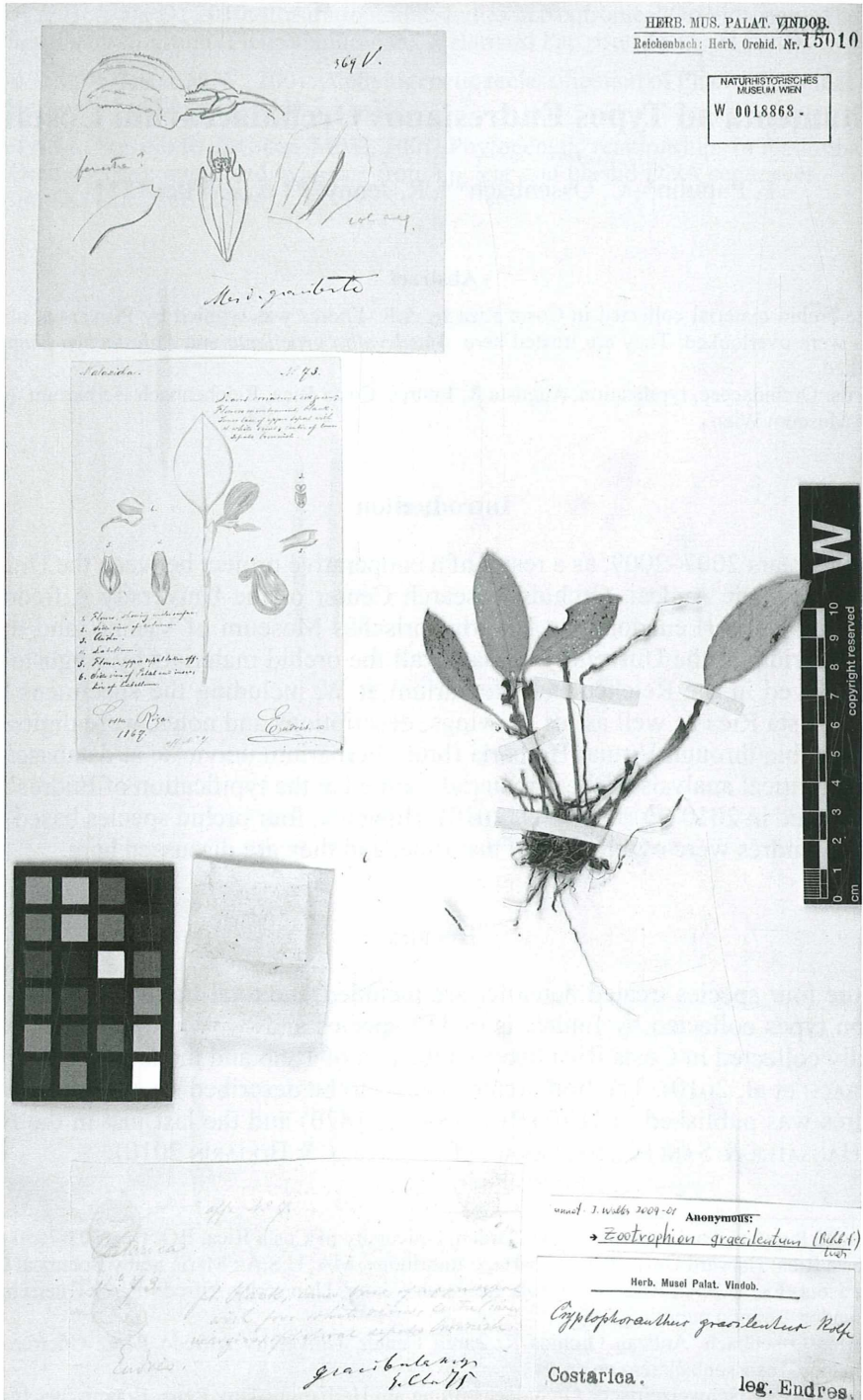


Fig. 1: Lectotype of *Masdevallia gracilentata*. Costa Rica, 1867, A.R. Endrés 73 [W 0018863 / Rchb. Orch. 18868].

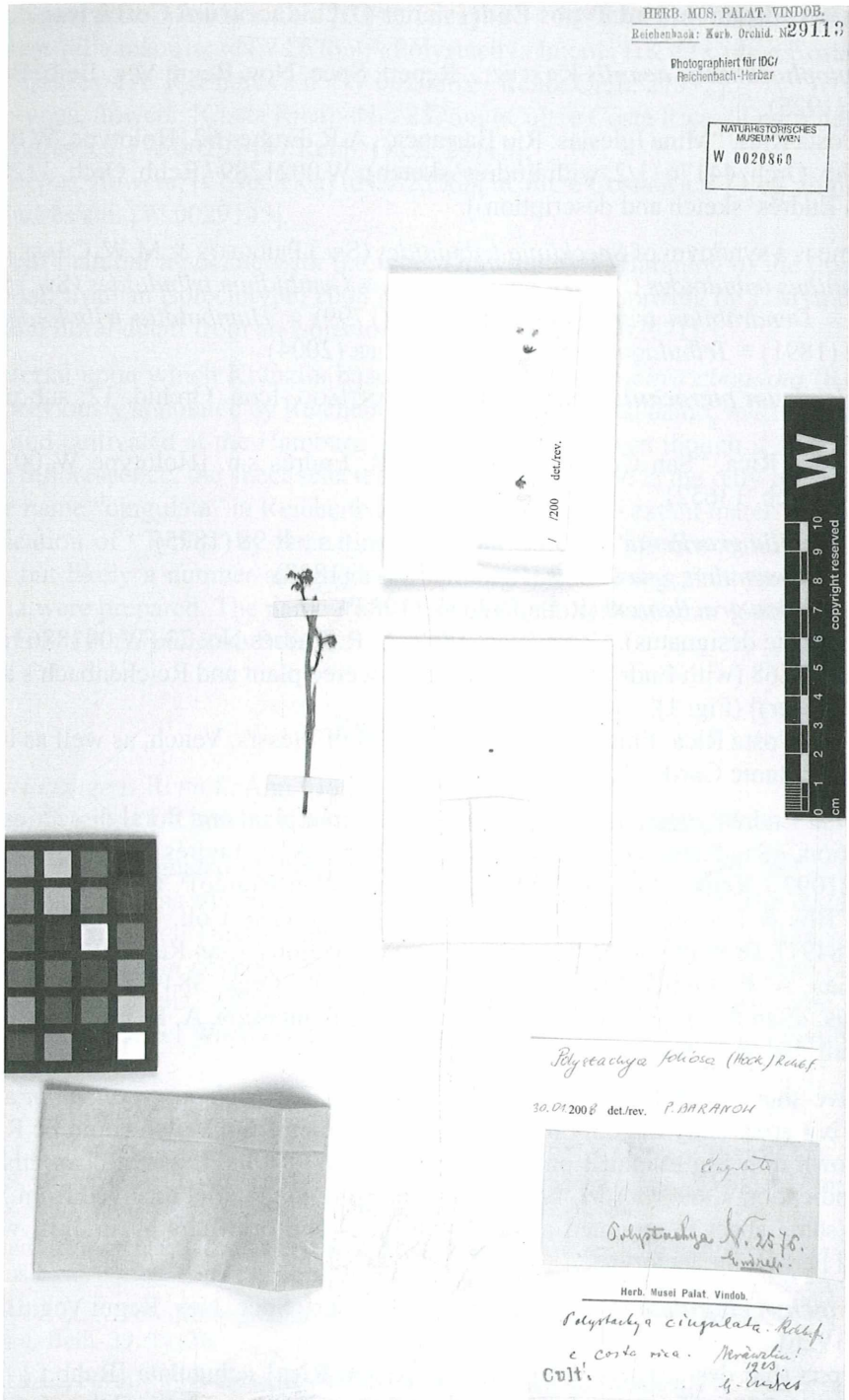


Fig. 2: Lectotype of *Polystachya cingulata*. Costa Rica, s.d. A.R. Endrés s.n. [W 0020860 / Rchb. Orch 29113].

Additamenta ad Typos Endresianos Orchidacearum Costaricae

1. *Cryptophoranthus acaulis* KRAENZL., Repert. Spec. Nov. Regni Veg. Beih. Beih. 34: 232 (1925).

Type: Costa Rica. "Mina Iglesias: Río Barranca", A.R. Endres 62 [Holotype, W 0021288 / Rchb. Orch. 44176 (1/2, with Endrés' sketch); W 0021289 / Rchb. Orch. 33201 (2/2, with Endrés' sketch and description)].

The name is a synonym of *Specklinia tribuloides* (Sw.) PRIDGEON & M.W. CHASE \equiv *Cryptophoranthus tribuloides* (Sw.) H. DIETR. (1984) \equiv *Cymbidium tribuloides* (Sw.) SPRENG. (1826) \equiv *Dendrobium tribuloides* (Sw.) SW. (1799) \equiv *Humboldtia tribuloides* (Sw.) KUNTZE (1891) \equiv *Tribulago tribuloides* (Sw.) LUER (2004).

2. *Epidendrum pterocaulon* HÁGSATER & E.SANTIAGO, Icon. Orchid. 12: sub pl. 1279 (2009).

Type: Costa Rica. "San Cristóbal, April", A. R. Endrés s.n. [Holotype W 0024578 / Rchb. Orch. 13652].

3. *Masdevallia gracilenta* Rchb.f., Gard. Chron., n.s., 4: 98 (1875)

\equiv *Cryptophoranthus gracilentus* (RCHB.f.) ROLFE (1887)

\equiv *Zootrophion gracilentum* (RCHB.f.) LUER (1982).

Lectotype (hic designatus): Costa Rica. 1867, A. R. Endrés No. 73 [W 0018863 / Rchb. Orch. 18868 (with Endrés' drawing of the flowered plant and Reichenbach's analysis of a flower)] (Fig. 1).

Syntypes: "Costa Rica. Flowered in the collection of Messrs. Veitch, as well as in Ham-burgh Botanic Garden"

Additional Endrés' material: drawings of the flowered plant and floral dissections, with description, «San Ramon. Camino a S. Carlos. July», A. R. Endrés No. 73 of Gen. Coll. [W 0021097 / Rchb. Orch. 33215]. Description, «San R[amó]ⁿ. Camino a S. Carlos. Potrero Blis & Legua. July», A. R. Endrés No. 73 of Gen. Coll. [W 0021331 / Rchb. Orch. 38491]. Drawing of the flower and floral dissections, [San Ramón]. Camino Volio to Legua», A. R. Endrés No. 73 [W 0021330 / Rchb. Orch. 38491]. Description and drawings, «San R[amó]ⁿ. Camino a S. Carlos. San Francisco», A. R. Endrés No. 563 of Gen. Coll. [W 0021099 / Rchb. Orch. 38488].

At W five sheets with Endrés' material referable to *Zootrophion gracilentum* are con-served, but apparently the only reference to a specimen from Veitch could be Reichen-bach's own drawing mounted on top left of sheet W 0018863, which bears his manu-script indication «369 V.» (the "V" perhaps referring to material received from Veitch). On the same sheet is mounted a plant with notes and drawings by Endrés, which is selected here as the lectotype.

4. *Polystachya cingulata* RCHB.f. ex KRAENZL., Repert. Spec. Nov. Regni Veg. Beih. 39: 81 (1926).

Lectotypus (hic designatus), inflorescence: [Costa Rica] «cingulata [Rchb.f.] / Polys-tachya N. 2576. / Endress - [alia manu]»; «Polystachya cingulata / Cult. e Costa Rica. / Leg. Endres / Kränzlin 1923», A.R. Endrés s.n. [W 0020860 / Rchb. Orch. 29113] (Fig. 2).

Isolectotypus, four inflorescences: [Costa Rica] «N. / 2576 / Costa Rica [?] [Rchb.f.] / Endress [alia manu]»; «N. / 2576.»; «*Polystachya luteola* HK ? / Cult. e Costa Rica. / Leg. Endres», A. R. Endrés s.n. [W 0020862 / Rchb. Orch. 27972].

Isolectotypus, flowers: [Costa Rica] «N. / 2576»; «Cult. e Costa Rica. / Leg. Endres», A. R. Endrés s.n. [W 0029144 / Rchb. Orch. 29113].

Isolectotypus, flowers: [Costa Rica] «N. / 2576»; «Cult. e Costa Rica. / Leg. Endres», A. R. Endrés s.n. [W 0029145].

Additional material associate with the type: Drawing by P. Baranow of the flower and floral detail from an isolectotype, 2008 [W 2008-0005095]; drawing by J. Mytnik of the flower and floral detail from an isolectotype, 2006 [W 2006-02971].

The material upon which Kränzlin based his type of *Polystachya cingulata* (KRÄNZLIN 1926), previously annotated by Reichenbach with this intended name, was received from Endrés and cultivated at the Hamburg Botanical Garden. Even though it only includes a single inflorescence, the sheet selected here as the lectotype is the only one annotated with the name “cingulata” in Reichenbach’s handwriting. No extant material at W bears the indication of “Typus” by Kränzlin. The number “2576” is not a field number by Endrés, but likely a number assigned at Hamburg to the living plant from which the exsiccata were prepared. The name *Polystachya cingulata* (KRÄNZLIN 1926) is probably a synonym of *P. caracasana* RCHB.f.

Excluded types

Maxillaria ringens RCHB.f., Ann. Bot. Syst. 6: 523 (1863).

Syntypes: [Mexico.] “Oaxaca, Karwinski. Guatemala, von Warsewicz”

ATWOOD (1999) designated Endres 8 (probably a sphalma for Endrés 68, W) as the species’ lectotype, but his selection is incompatible with the protologue. The original description (REICHENBACH 1863), in fact, makes no mention at all neither of Endrés nor of any other Costa Rican collections. The species is instead based on two syntypes from Mexico and Guatemala, collected by Baron Wilhelm Friedrich Karwinski von Karwin (1780–1855) and Józef Warszewicz Ritter von Rawicz (1812–1866), respectively.

References

- ATWOOD J.T., 1999: *Maxillaria* RUIZ & PAVÓN. – In: ATWOOD J.T. & MORA DE RETANA D.E.: Family 39, Orchidaceae: Tribes Maxillarieae: subtribes Maxillariinae and Oncidiinae. – In: BURGER W. (ed.): Flora Costaricensis. – Fieldiana, Bot. n.s. 40. 32–84.
- HÁGSATER E. & SÁNCHEZ SALDAÑA L. (eds.), 2009: Species New and Old in *Epidendrum*. The Genus *Epidendrum*, Part 8. – Icon. Orchidacearum (México) 12: pl. 1201–1300.
- KRÄNZLIN F.W.L., 1926: Monographie der Gattung *Polystachya* HOOK. – Repert. Sp. Nov. Regni Veg. Beih. 39: 1–136.
- OSSENBACH C., PUPULIN F. & JENNY R., 2010: Orchid itineraries of Augustus R. Endrés in Central America: a biographic and geographic sketch. – Lankesteriana 10: 19–47.
- PUPULIN F. & BOGARÍN D., 2010: Illustration and studies in Neotropical Orchidaceae. The *Lepanthes jimenezii* group (Pleurothallidinae). – Harvard Pap. Bot. 15 111–121.

- PUPULIN F., OSSENBACH C., JENNY R. & VITEK E., 2010: Typi Orchidacearum ab Augusto R. Endresio in Costa Rica lecti. – *Ann. Naturhist. Mus. Wien, B*, 112: 265–313.
- REICHENBACH H.G., 1863: Subclassis VIII. Gynandrae ENDL. Ordo XXVII Orchides JUSS. – In: MÜLLER C. (ed.): *Synopsis platarum Phanerogamicarum novarum omnium*. – *Ann. Bot. Syst.* 6: 167–933.

ZOBODAT - www.zobodat.at

Zoologisch-Botanische Datenbank/Zoological-Botanical Database

Digitale Literatur/Digital Literature

Zeitschrift/Journal: [Annalen des Naturhistorischen Museums in Wien](#)

Jahr/Year: 2012

Band/Volume: [113B](#)

Autor(en)/Author(s): Pupulin Franco, Ossenbach Carlos, Jenny Rudolf, Vitek Ernst

Artikel/Article: [Additamenta ad Typos Endresianos Orchidacearum Costaricae.
133-138](#)