



**DESCRIPTION OF A NEW SPECIES OF THE GENUS *ONCOPSIS*  
(HEMIPTERA: CICADOMORPHA: CICADELLIDAE) FROM GREECE**

Roland MÜHLETHALER

National Museum of Wales, Cathays Park, Cardiff CF10 3NP, United Kingdom.  
E-mail: [oncopsis@gmx.net](mailto:oncopsis@gmx.net)

**Abstract** – *Oncopsis krios* – a new species of Macropsinae leafhopper from Mt. Killini in Greece is described. The new species belongs to the *O. alni*-group and differs from *O. alni*, *O. planiscuta*, *O. appendiculata* and *O. tristis* by the combination of coloration and genital characters. An identification key for all European species of the *alni*-group is provided. *O. krios* is reported from *Ulmus* sp. which is a new host plant for *Oncopsis*. Hitherto all known European *Oncopsis* species are associated with Betulaceae.

**KEY WORDS:** Auchenorrhyncha, Hemiptera, Macropsinae, leafhopper, new species, taxonomy, Greece.

**Izveček** – OPIS NOVE VRSTE RODU *ONCOPSIS* (HEMIPTERA: CICADOMORPHA: CICADELLIDAE) IZ GRČIJE

Opisana je *Oncopsis krios* – nova vrsta škržatka iz poddružine Macropsinae z gore Killini v Grčiji. Nova vrsta pripada sorodstvu *O. alni* in se razlikuje od vrst *O. alni*, *O. planiscuta*, *O. appendiculata* in *O. tristis* z vrsto znakov v obarvanosti in obliki spolnih organov. Podan je ključ za vse evropske vrste sorodstva *O. alni*. *O. krios* je bila najdena na brestu (*Ulmus* sp.), ki je nova hranilna rastlina za rod *Oncopsis*. Vse druge znane evropske vrste rodu *Oncopsis* živijo na rastlinah iz družine Betulaceae.

**KLJUČNE BESEDE:** Auchenorrhyncha, Hemiptera, Macropsinae, škržatki, nova vrsta, taksonomija, Grčija.

**Introduction**

In the western Palaearctic region the genus *Oncopsis* Burmeister, 1838 (Cicadellidae, Macropsinae) is represented by some 12 species. A total of eight

*Oncopsis* species have been reported from Europe. Species identification is generally difficult because of few reliable morphological characters. Additionally many *Oncopsis* species are polymorphic concerning the coloration (Claridge & Nixon, 1981, 1986). So far all known European species are associated with Betulaceae (*Alnus*, *Betula*, *Carpinus*, *Corylus*) and can be separated by the shape of the aedeagus into two species groups (Anufriev, 1967): the *flavicollis*-group with an S-shaped aedeagus and the *alni*-group with an evenly curved aedeagus.

Material collected by R. Linnavuori provided an undescribed *Oncopsis* species from Greece belonging to the *alni*-group, which is presented here. Notable is the host plant, which is the first record for an *Oncopsis* species on Ulmaceae.

### Material and methods

For the description I follow Ossiannilsson's and Hamilton's (1980) terminology. The type material is deposited in the National Museum of Wales, Cardiff collections (NMWC).

### Taxonomy

Genus *Oncopsis* Burmeister, 1838

Type species: *Cicada flavicollis* Linnaeus, 1761; by subsequent designation by Westwood, 1840.

#### *Oncopsis krios* sp. n.

**Holotype:** ♂, Peloponnesus, Mt. Killini (sometimes spelled as Kyllini), M. S. Trikalon, Greece, 11-13.VI.1990, R. Linnavuori leg. (NMWC).

**Paratypes:** 12♂, 7♂♀, Peloponnesus, Mt. Killini, M. S. Trikalon, Greece, 11-13.VI.1990, R. Linnavuori leg. (NMWC). 1♂, 1♀ of paratypes deposited in the Natural History Museum, London (BMNH) and 1♂, 1♀ of paratypes deposited in the Zoological Institute, Russian Academy of Sciences, St. Petersburg (ZIN).

**Additional material:** 1 intersex (Figs 5-6), same locality and date as holotype and paratypes (NMWC). Intersex individuals within *Oncopsis* are discussed and their terminalia figured by Hamilton (1980).

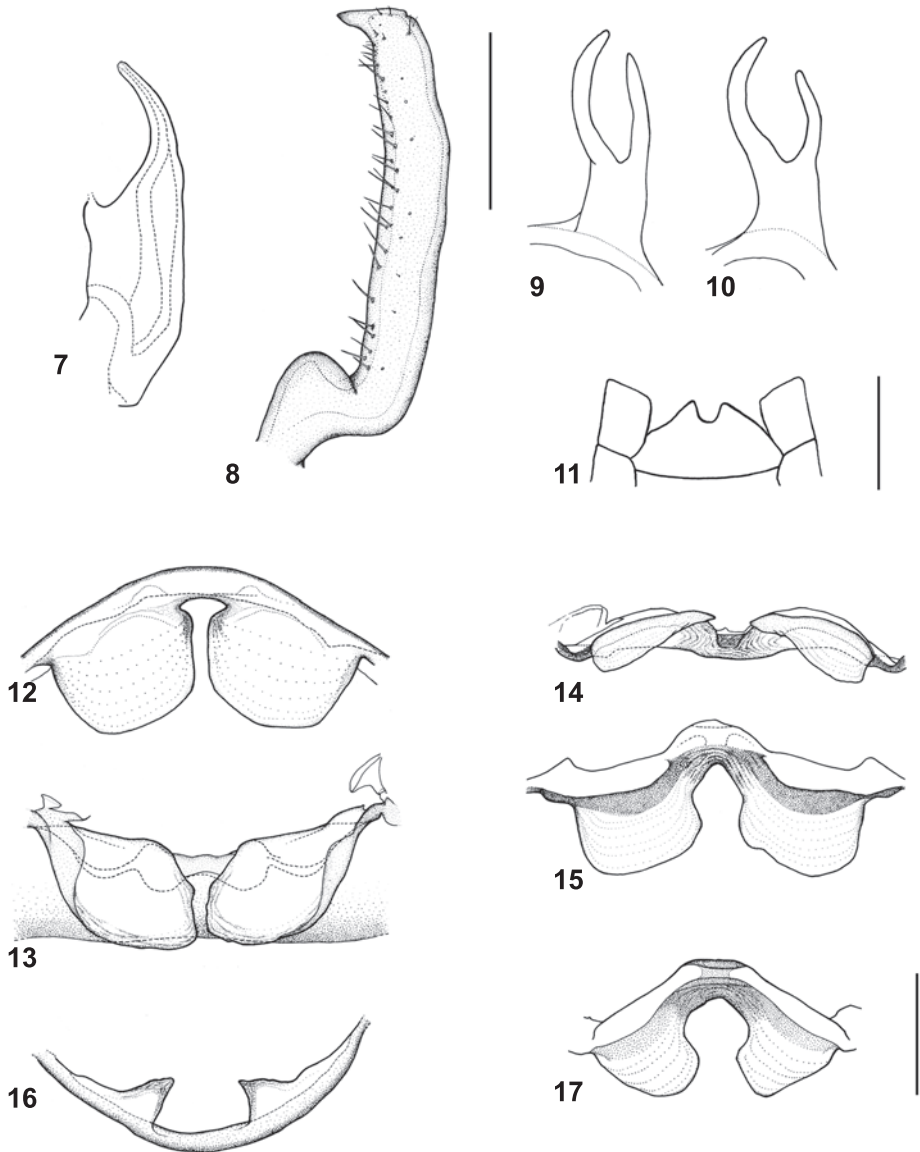
*Note.* The host plant is indicated as *Ulmus montana*. This species was often regarded as a subspecies of *Ulmus glabra* Hudson, 1762. As *U. glabra* ssp. *montana* is not listed in Flora Hellenica (Strid & Tan, 1997) the host plant is best treated as *Ulmus* sp.

**Description:** The general appearance is similar to *Oncopsis* species from the *flavicollis*-group namely *O. flavicollis* Linnaeus, 1761 and *O. carpini* J. Sahlberg, 1871. In lateral aspect the face of both sexes is strongly convex (Figs 1,3). The new described species belongs to the *alni*-group due to its evenly curved outer margin of the aedeagus (Fig. 5).

Roland Mühlethaler: Description of a new species of the genus *Oncopsis* (Hemiptera: Cicadomorpha: Cicadellidae) from Greece



**Figs 1-6:** *Oncopsis krios* sp. n., total view. 1 – male in lateral view (paratype); 2 – male in frontal view (paratype); 3 – female in lateral view (paratype); 4 – female in frontal view (paratype); 5 – intersex in lateral view; 6 – intersex in frontal view. Scale bar for figs 1, 3, 5 = 1.0 mm; for figs 2, 4, 6 = 0.5mm.



**Figs 7-17:** *Oncopsis krios* sp. n., male and female genitalia. 7 – aedeagus from the left; 8 – male left genital style from the left; 9-10 – anal collar appendage of two different males; 11 – female ovipositor in ventral view; 12 – male second tergal apodemes in broadest view; 13 – male second tergal apodemes in ventral view; 14-15 – male first tergal apodemes in different views; 16 – male ventral apodemes in broadest view; 17 – male first dorsal apodemes of another specimen in broadest view. Scale bar for figs 7-10, 12-17 = 0.25 mm; for fig. 11 = 0.5 mm.

**Species diagnosis:** The here described species differs from *O. appendiculata* Wagner, 1944 and *O. tristis* Zetterstedt, 1838 by the larger body size and the shape of the branches of the anal collar appendages. *O. krios* sp. n. differs from *O. alni* Schrank, 1801 and *O. planiscuta* Thomson, 1870 by the coloration and the shape of the 7<sup>th</sup> female sternite.

**Coloration (Figs 1-4):** Male: Body yellow-brownish, abdomen dark brown dorsally, yellow ventrally; wings hyaline with brown veins, commisural border yellow and brown, apical cells infumated; legs yellow-brownish, tibia externally with a brown band; face yellow with two large black discoidal spots, discoidal cross-band always missing, median band short, interocular band not reaching the eyes (Fig. 2). – Female: Body yellow, abdomen yellow-brownish dorsally, yellow ventrally; wings hyaline with yellow-brownish veins; legs yellow without any markings; face yellow with two large black discoidal spots, discoidal cross-band, median band and interocular band missing (Fig. 4).

**Male genitalia (Figs 5-8, 9-13):** Ventral outline of aedeagus convex and evenly curved (Fig. 5); branches of anal collar appendages of approximately equal length (Figs 7-8); genital style as in Fig. 6. 1<sup>st</sup> dorsal apodemes quite variable (Figs 12-13, 15); 2<sup>nd</sup> dorsal apodemes almost as broad as long (Figs 10-11) and only slightly convex, separated by a small gap; 1<sup>st</sup> ventral apodemes short and angular, clearly separated from each other (Fig. 14).

**Female genitalia (Fig. 9):** Caudal margin of 7<sup>th</sup> abdominal sternum convex and with a deep incision between angular corners (Fig. 9); ventral margin of ovipositor in later aspect straight and extending caudally beyond apex of pygofer.

**Body length:** Males – 4.35-4.65 mm. Females – 4.60-4.80 mm.

**Etymology:** The species is named after the markings on the male's vertex (Fig. 2). Derived from ancient Greek "κρίως; krios" – ram". In addition the river Krios has its source in Mt. Killini.

#### Identification key to European *Oncopsis* species (*alni*-group)

1	Males .....	2
	Females .....	6
2(1)	Genital style narrow, smaller species. On <i>Betula</i> .....	3
	Genital style broad, larger species. On <i>Alnus</i> or <i>Ulmus</i> .....	4
3(2)	Longer branch of anal collar appendage strongly retorse . . .	<i>appendiculata</i>
	Longer branch of anal collar appendage moderately curved . . . . .	<i>tristis</i>
4(2)	Branches of anal collar appendage of different length .....	<i>alni</i>
	Branches of anal collar appendage of equal or almost equal length .....	5
5(4)	Face with broad discoidal cross-band. On <i>Alnus incana</i> .....	<i>planiscuta</i>
	Face without discoidal cross-band. On <i>Ulmus</i> .....	<i>krios</i> n. sp.

- 6(1) Caudal margin of 7<sup>th</sup> abdominal sternum almost straight or concave. On *Alnus* . . . . . 7  
 Caudal margin of 7<sup>th</sup> abdominal sternum convex. On *Betula* or *Ulmus* . . . . . 8
- 7(6) 7<sup>th</sup> abdominal sternum straight, medially with a slight incision . . . *planiscuta*  
 7<sup>th</sup> abdominal sternum concave, medially without incision . . . . . *alni*
- 8(6) 7<sup>th</sup> abdominal sternum with a deep incision between angular corners. On *Ulmus* . . . . . *krios* n. sp.  
 7<sup>th</sup> abdominal sternum with a shallow incision. On *Betula* . . . . . 9
- 9(8) Ovipositor extending caudally considerably beyond apex of pygofer. . . . . *appendiculata*  
 Ovipositor extending caudally only little beyond apex of pygofer . . . . . *tristis*

### Acknowledgements

I want to thank R. Linnavuori for collecting the specimens and providing additional information of the type locality. I am grateful to Mrs R. Müller (Basel, Switzerland) for her remarks on the etymology and Dr T. Rich (Cardiff, UK) for his botanical comments. I am also very thankful to Mr. J. Turner (Cardiff, UK) for his assistance for imaging the specimens. Finally I want to thank Dr M. R. Wilson (Cardiff, UK) for encouragement and helpful comments on earlier versions of this manuscript and thank the reviewers Prof. S. Drosopoulos (Athens, Greece) and Dr D. A. Dmitriev (Illinois, USA) for their constructive notes on the manuscript.

### References

- Anufriev, G. A., 1967: Notes on the genus *Oncopsis* Burmeister, 1838 (Homoptera: Auchenorrhyncha) with descriptions of new species from the Soviet Far East. *Entomologisk Tidskrift*, 88: 174-184.
- Asche, M. & Hoch, H., 2004: Fauna Europaea: Cicadomorpha. Fauna Europaea version 1.1, <http://www.faunaeur.org>. Accession date: 01.01.2007.
- Claridge, M. F. & Nixon, G. A., 1981: *Oncopsis* leafhoppers on British trees: polymorphism in adult *O. flavicollis* (L.). *Acta Entomologica Fennica*, 38: 15-19.
- Claridge, M. F. & Nixon, G. A., 1986: *Oncopsis flavicollis* (L.) associated with tree birches (*Betula*): a complex of biological species or a host plant utilization polymorphism? *Biological Journal of the Linnean Society*, 27 (4): 381-397.
- Hamilton, K. G. A., 1980: Contributions to the study of the world Macropsini (Rhynchota: Homoptera: Cicadellidae). *Canadian Entomologist*, 112 (9): 875-932.
- Ossiannilsson, F., 1981: *The Auchenorrhyncha (Homoptera) of Fennoscandia and Denmark. Part 2: The Families Cicadidae, Cercopidae, Membracidae, and Cicadellidae (excl. Deltocephalinae)*. 223-593. Scandinavian Science Press, Klampenborg.
- Strid, A. & Tan, K. (eds.), 1997. *Flora Hellenica*. Vol. 1. Königstein: Koeltz Scientific Books. 546 pp.

Received / Prejeto: 31. 3. 2008

# ZOBODAT - [www.zobodat.at](http://www.zobodat.at)

Zoologisch-Botanische Datenbank/Zoological-Botanical Database

Digitale Literatur/Digital Literature

Zeitschrift/Journal: [Acta Entomologica Slovenica](#)

Jahr/Year: 2008

Band/Volume: [16](#)

Autor(en)/Author(s): Mühlethaler Roland

Artikel/Article: [DESCRIPTION OF A NEW SPECIES OF THE GENUS ONCOPSIS \(HEMIPTERA: CICADOMORPHA: CICADELLIDAE\) FROM GREECE 5-10](#)