

Egg surface morphology of *Pontia chloridice* (HÜBNER, [1808–1813])

(Lepidoptera, Pieridae)

by

STANISLAV ABADJIEV

received 9.II.1994

Abstract: The external morphology and chorion structure of the egg of *Pontia chloridice* (HÜBNER, [1808–1813]) are described and figured using SEM-micrographs.

Zusammenfassung: Die Strukturen der Eihülle von *Pontia chloridice* (HÜBNER, [1808–1813]) werden mit Hilfe von REM-Bildern beschrieben und abgebildet.

On 16.VI.1993 during a collecting trip on the left bank of Arda River, just near the small railway station of Sredna Arda (in the low eastern parts of Rhodopi Mts. in S. Bulgaria) I collected several eggs of *Pontia chloridice* (HÜBNER, [1808–1813]).

The ♀♀ of *Pontia chloridice* lay their eggs singly either on the upper leaves or directly on the flowers of *Cleome ornithopoides* L. (Capparidaceae).

Description

The egg is tall-conical, tapering above and of a typical pierid form, about 0.85 mm long. Longitudinal ribs are 22 in number, much stronger than the horizontal ones. Horizontal ribs are 26 to 28. Aeropyles are located in four bulbs on the longitudinal rib apices. The micropylar rosette consists of 3 concentric cell regions. The two external regions include several pentagonal, hexagonal and heptagonal cells. The micropylar canals are surrounded by a rosette of 3 pentagonal and 2 heptagonal cells. Outside of each of the 2 quadrangular cells are located 3 pentagonal cells. The chorion surface is reticulate, and covered with irregularly shaped prominences.

Acknowledgement

I am very obliged and thankful to Mr. PLAMEN MITOV of the Department of Zoology and Anthropology at Sofia University for his kind assistance with the scanning electron microscopy and for the film processing.

Following pages:

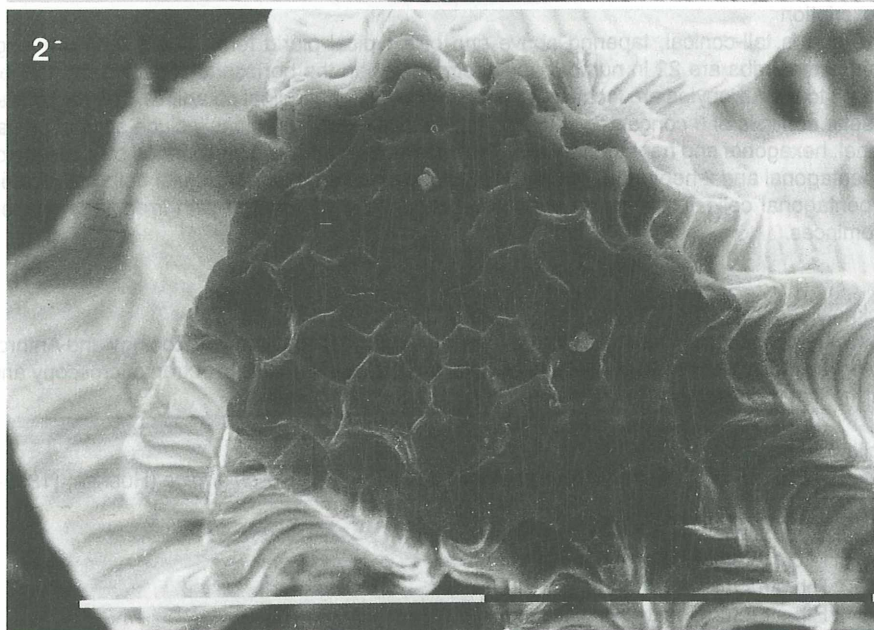
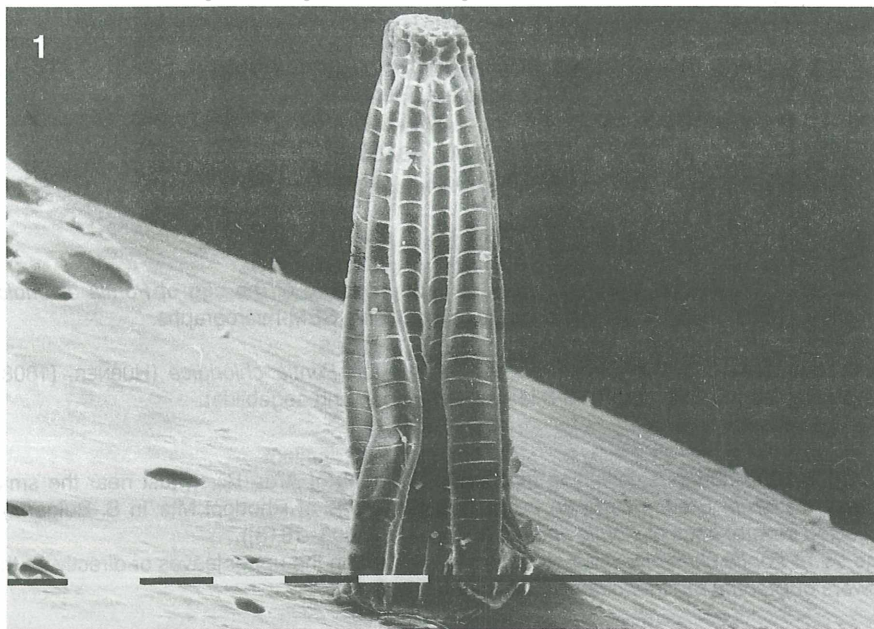
Figs. 1–4: Scanning electron micrographs of the egg of *Pontia chloridice* (HÜBNER, [1808–1813]).

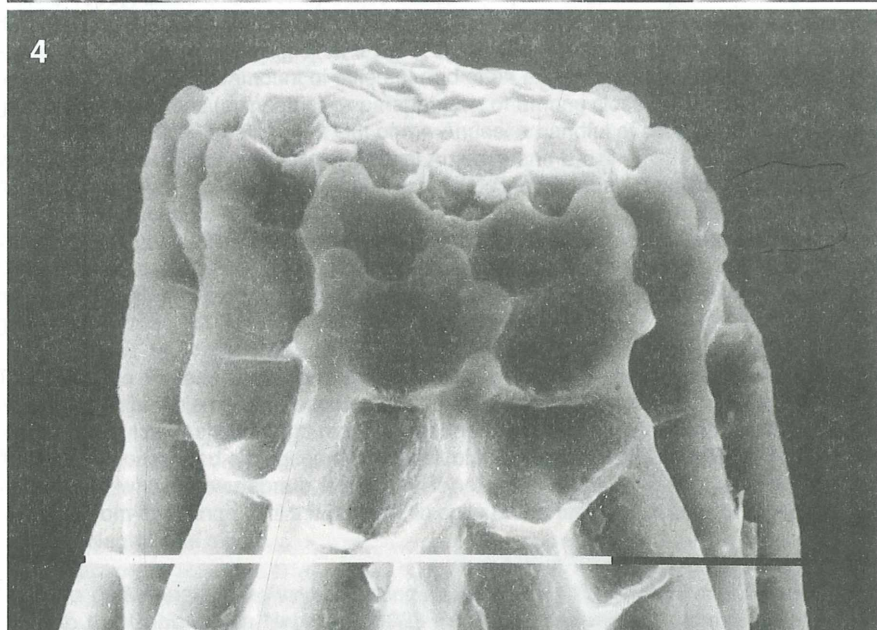
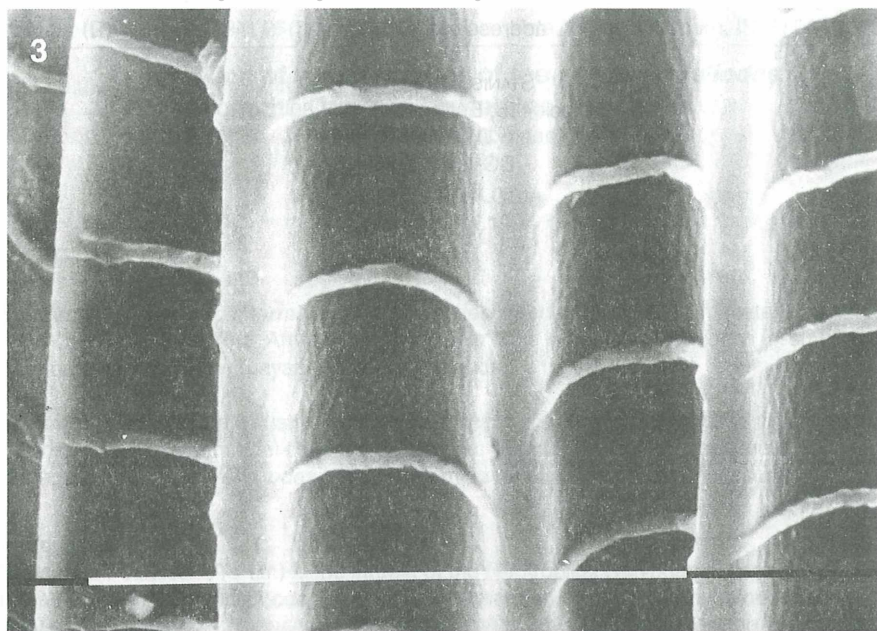
Fig. 1: General view of the egg, scale bar = 0.1 mm

Fig. 2: Micropyle area, scale bar = 0.1 mm

Fig. 3: Rib structure, scale bar = 0.1 mm

Fig. 4: Rib structure, scale bar = 0.1 mm.





address of the author

**STANISLAV ABADJIEV
Block 415, Entrance G, Flat 80
Druzhba 2
BG-1582 Sofia
Bulgaria**

ZOBODAT - www.zobodat.at

Zoologisch-Botanische Datenbank/Zoological-Botanical Database

Digitale Literatur/Digital Literature

Zeitschrift/Journal: [Atalanta](#)

Jahr/Year: 1994

Band/Volume: [25](#)

Autor(en)/Author(s): Abadjiev Stanislav P.

Artikel/Article: [Egg surface morphology of *Pontia chloridice* \(Hübner, \[1808-1813\]\) \(Lepidoptera, Pieridae\) 521-524](#)