

Atalanta (August 2000) 31 (1/2): 245–247, Würzburg, ISSN 0171-0079

A new subspecies of *Promalactis autoclina* MEYRICK, 1935 from Indonesia

(Lepidoptera, Oecophoridae)

by

ALEXANDR L. LVOVSKY

received 29.III.2000

Abstract: A new subspecies of the little-known *Promalactis autoclina* MEYRICK is described from the island of Java. Until now this species was known only from Japan, South Korea and East China. The description is founded on material stored in the National Museum of Natural History in Leiden (Netherlands).

Резюме: По материалам из коллекции Естественного-исторического музея в Лейдене (Нидерланды), собранным на острове Ява, описан новый подвид малоизвестного вида *Promalactis autoclina* MEYRICK. Ранее этот вид был известен только из Японии, южной Кореи и восточного Китая.

Promalactis autoclina javanica subsp. nov.

Holotype ♂: East Java, Nongkodjadjar, at light, 25.III.1940, 1300 m, leg. A. M. R. WEGNER.

Paratypes: 9 ♂♂, 5 ♀♀, from the same place, 26.II.–26.IV.1940, leg. A. M. R. WEGNER.

Holotype and 11 paratypes are kept in Leiden, National Museum of Natural History. Three paratypes are kept in St.-Petersburg, Zoological Institute, Russian Academy of Sciences.

Description

Wingspan 7–9 mm. Head white with grey forehead and dark ochreous back of the head. Antennae fuscous with a dotted white line. Labial palpi with a brown second joint. Terminal joint white with a brown apical part. Thorax ochreous. Forewings elongate-lanceolate, light ochreous. The white triangular spot is near the costa at $\frac{1}{4}$ from the apex. The white transverse streak is at $\frac{1}{4}$ from the basis of the wing. The second small white transverse streak is near the basis. The white spot and the streaks edged with scattered dark brown scales. Some of these scales are near the apex of the wing. Hindwings narrow and grey.

Male genitalia (fig. 1): Distal part of the valva long and narrow. A small narrow process going off from the upper margin of the valva. Saccus conic. Aedengus long, without comuti.

Female genitalia (fig. 2): Antrum pocket-shaped. Signum with 2 processes, one of them with a dentate margin.

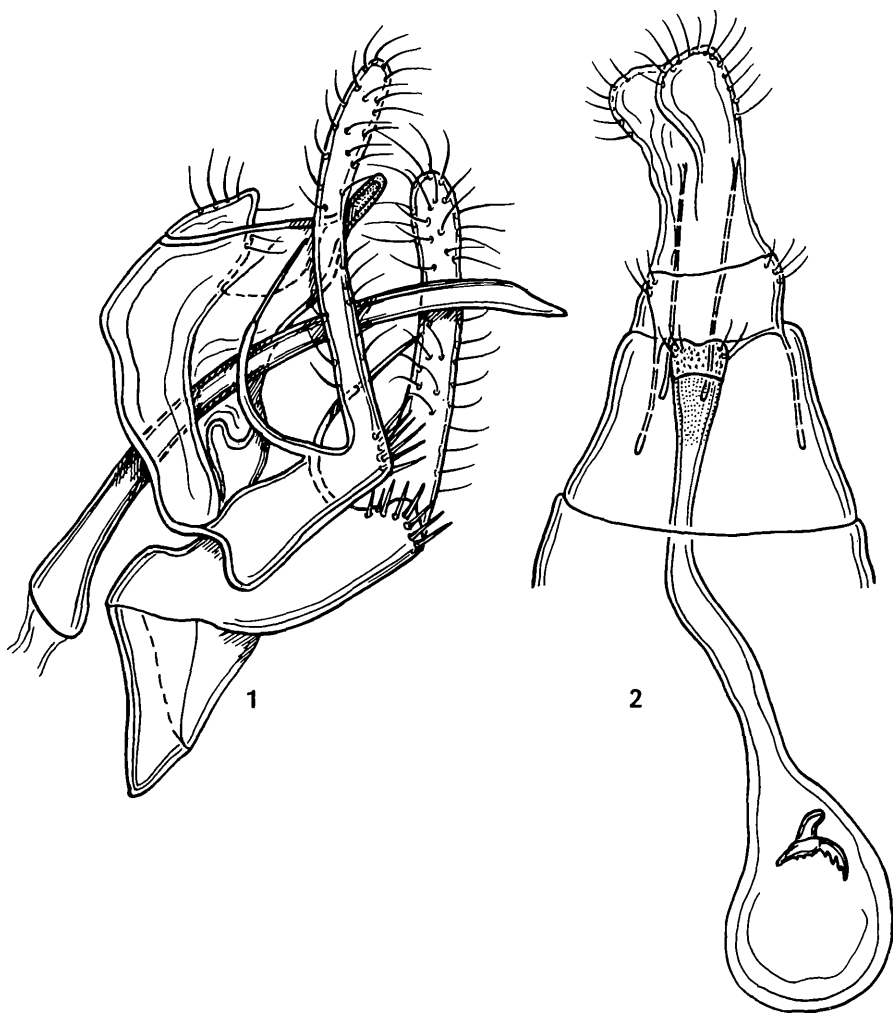
Differential diagnosis

The new subspecies differs from the nominotypical one by the coloration of the forewings. In the new subspecies the basal field of the forewing is light ochreous, the same colour as in the rest of the wing. In the nominotypical subspecies the basal field of the forewing is dark brown,

sharply differing from the remaining light ochreous part of the forewing. The genitalia structure of both subspecies shows no noticeable differences.

Distribution

Indonesia (East Java).



Figs. 1, 2: *Promalactis autoclina javanica* subsp. nov. 1 – male genitalia, holotype; 2 – female genitalia, paratype.

Acknowledgements

I am grateful to Dr. ERIK J. VAN NIEUKERKEN (National Museum of Natural History in Leiden) for the loan of material and Prof. Dr. CLAS M. NAUMANN (Museum Alexander Koenig in Bonn) for the help in my work. This study received financial support from the German Research Foundation (Deutsche Forschungsgemeinschaft).

address of the author

ALEXANDR L. LVOVSKY
Zoological Institute, Russian Academy of Sciences
Inuversiteskaja nab., 1
199034 St.-Petersburg
Russia

ZOBODAT - www.zobodat.at

Zoologisch-Botanische Datenbank/Zoological-Botanical Database

Digitale Literatur/Digital Literature

Zeitschrift/Journal: [Atalanta](#)

Jahr/Year: 2000

Band/Volume: [31](#)

Autor(en)/Author(s): Lvovsky Alexandr L.

Artikel/Article: [A new subspecies of *Promalactis autoclina* \(Meyrick, 1935\) from Indonesia \(Lepidoptera, Oecophoridae\) 245-247](#)