

# The primary types of Neotropical Pierinae in the collection of Laboratoire d'Entomologie, Muséum National d'Histoire Naturelle, Paris

(Lepidoptera, Papilionoidea, Pieridae)

by

STANISLAV P. ABADJIEV

received 24.XII.2004

**Summary:** The butterfly collection of the Laboratoire d'Entomologie, Muséum National d'Histoire Naturelle, Paris contains Neotropical Pierinae type material of 27 taxa. For the stability of nomenclature 17 lectotypes have been designated.

**Zusammenfassung:** Die Schmetterlingssammlung des Laboratoire d'Entomologie, Muséum National d'Histoire Naturelle, Paris verfügt über das Typenmaterial von 27 Pierinae-Taxa. Aus Gründen der Stabilität werden 17 Lectotypen designiert.

**Introduction:** Of special importance in any taxonomic study of Lepidoptera is the good knowledge on the type material of the taxa applied. This is surely the basis for future investigations. As far as name-bearing types (holotypes, lectotypes, syntypes) serve as a standard of nominal species group taxa, it is important to know all the data which can help in their subsequent recognition (including labels descriptions), and publishing lists of such types housed at certain institutions is recommended (ICZN, 1999: 72F.4).

This publication is a result of my research visit to Laboratoire d'Entomologie, Muséum National d'Histoire Naturelle, Paris during 6–31 October 2003. A revision of the butterfly collection there allowed to find Neotropical Pierinae type material of 27 taxa. The collection contains primary types of taxa described by C. E. BLANCHARD, F. M. BROWN, J. B. GODART, F. LE CERF, P. H. LUCAS. For the stability of nomenclature, and in order to fix the identity of several species group names, lectotypes have been designated for *Euterpe hebra* LUCAS, 1852, *E. modesta* LUCAS, 1852, *E. notha* LUCAS, 1852, *E. sebennica* LUCAS, 1852, *Pieris anguitia* GODART, 1819, *P. caesia* LUCAS, 1852, *P. demodice* BLANCHARD, 1852, *P. eleusis* LUCAS, 1852, *P. erota* LUCAS, 1852, *P. helena* LUCAS, 1852, *P. ilaire* GODART, 1819, *P. limnoria* GODART, 1819, *P. mysia* GODART, 1819, *P. phaloe* GODART, 1819, *P. pylotis* GODART, 1819, *P. stamnata* LUCAS, 1852 and *P. xanthodice* LUCAS, 1852.

The names are arranged in alphabetic order. Each entry includes the species group name, followed by the recently used generic name, original combination quoted from the original publication, type locality (containing a quotation from the original publication or subsequent fixation due to lectotype designation), type specimens as specified with their labels and notes about the type material and current taxonomic status (as listed in LAMAS, 2004). All extensions of abbreviations or remarks used are enclosed in square brackets “[ ]”. The text of the label is quoted in double quotation marks. Each line in the text of the label is separated by a vertical line “|”. In quotations of combined labels (handwritten on printed forms) the handwritten text is reproduced in *italics*; completely handwritten and completely printed labels are quoted in a plain character face.

## List of Pierinae types

**anguitia** GODART, 1819 — *Hesperocharis* FELDER, 1862

“100. Piéride Anguitia...*Pieris Anguitia*” GODART, 1819 (In: LATREILLE & GODART, *Encyclopédie Méthodique. Histoire naturelle. Entomologie, ou histoire naturelle des crustacés, des arachnides et des insectes* 9 (1): 112, 146–147). Type locality:–“Brésil” (l. c.: 147).

Lectotype ♂ (**here designated**) with labels:

(1) printed with handwritten inscriptions [here italicised] (on white paper with light green frame and lines) “*Brésil* | *mr. Delaland* | MUSÉUM DE PARIS”, on the back side circle stucked, handwritten” “Brésil, | Delalande”; (2) circle printed (on white paper with blue frame) “SYN- | TYPE”; (3) printed (on white paper in red) “TYPE”

Paralectotype ♂ with labels:

(1) printed with handwritten inscriptions [here italicised] (on white paper with light green frame and lines) “*Brésil* | *mr. Delalande* | MUSÉUM DE PARIS”, on the back side white circle stucked, handwritten” “Brésil, | Delalande”; (2) circle printed (on white paper with blue frame) “SYN- | TYPE”; (3) printed (on white paper in red) “TYPE”

The number of the type specimens originally not stated (l. c.: 146–147). A lectotype has been selected to fix the identity of the name. Originally described and currently treated as a taxonomic species.

**caesarea** LUCAS, 1852 — *Pereute* HERRICH-SCHÄFFER, 1867

“*Euterpe Caesarea*” LUCAS, 1852 (Description de nouvelles espèces de Lépidoptères appartenant aux collections entomologiques du Musée de Paris. – *Rev. Mag. Zool.* (2) 4: 194–195), Paris. Type locality:–“Colombie” (l. c.: 195).

? Syntype ♂ with labels:

(1) printed with handwritten inscriptions [here italicised] (on white paper with light green frame and dotted lines) “*Quito* | *Pérou* | 1851 | *Echange Boisduval* | MUSÉUM DE PARIS”, on the back side stucked: circle handwritten “318 | 51”; (2) handwritten (on green paper with double black frame and lines) “Caesarea, Luc. (Koll. | Quito”; (3) printed (on white paper in red) “TYPE”; (4) circle printed with handwritten inscriptions [here italicised] (on white paper with blue frame) “SYN- | TYPE ?”

This specimen is with uncertain “type” status. Either “Colombie” is a mistake of LUCAS, or this specimen is not from the original type series. The original description is based on ♀. Currently *Pereute leucodrosime caesarea* (LUCAS, 1852).

**caesia** LUCAS, 1852 — *Leptophobia* BUTLER, 1870

“*Pieris Cæsia*” LUCAS, 1852 (Description de nouvelles espèces de Lépidoptères appartenant aux collections entomologiques du Musée de Paris. – *Rev. Mag. Zool.* (2) 4: 299–300), Paris. Type locality:–“Quito” (l. c.: 300).

Lectotype ♂ (Colour plate 3: Figs 1, 2) (**here designated**) with labels:

(1) printed with handwritten inscriptions [here italicised] (on white paper with light green frame and lines) “*Pérou* | *Quito* (*M. Bourcier*) | 1851 | *Echange Boisduval* | MUSÉUM DE PARIS”, on the back side handwritten in pencil” “caesia Luc.” and circle stucked, handwritten” “358 | 51”; (2) handwritten (on white paper) “Pieris | caesia H. Luc. | *Rev. Mag. Zool.*, | (2) 4,

1852, p. 299 | (P. Viette X-1956, H.T.)"; (3) printed (on red paper)"TYPE"; (4) printed (on white paper in red) "TYPE"; (5) circle printed (on white paper with blue frame) "SYN- | TYPE" Originally described and currently treated as a taxonomic species. Lectotype designation here has been done to fix the identity of the name.

**cora** LUCAS, 1852 — *Catasticta* BUTLER, 1870

"*Euterte Cora*" LUCAS, 1852 (Description de nouvelles espèces de Lépidoptères appartenant aux collections entomologiques du Musée de Paris. – Rev. Mag. Zool. (2) 4: 197), Paris. Type locality: "Cuzco" (l. c.: 198).

Lectotype ♂ [without abdomen] with labels:

(1) printed with handwritten inscriptions [here italicised] (on white paper with light green frame and dotted lines) "*Cuzco | Pérou | 1849 | Cl. Gay | MUSÉUM DE PARIS*", on the back side stuck: white circle handwritten "3 | 49"; (2) handwritten (on white paper) "357"; (3) printed (on red paper) "TYPE"; (4) printed with handwritten inscriptions [here italicised] (on white paper) "*Catasticta | cora | Lucas | det. F. M. Brown*"

Paralectotypes 3 ○○ with labels:

1. ♂: (Colour plate 4, Figs 1, 2) (1) printed with handwritten inscriptions [here italicised] (on white paper with light green frame and dotted lines) "*Cuzco | Pérou | 1849 | Cl. Gay | MUSÉUM DE PARIS*", on the back side stuck: white circle handwritten "3 | 49" and white handwritten in pencil "E. cora Luc."; (2) handwritten (on white paper) "356";

2. ♂: (1) printed with handwritten inscriptions [here italicised] (on white paper with light green frame and dotted lines) "*Cuzco | Pérou | 1849 | Cl. Gay | MUSÉUM DE PARIS*", on the back side stuck: white circle handwritten "3 | 49"; (2) handwritten (on white paper) "358";

3. ♂: (1) printed with handwritten inscriptions [here italicised] (on white paper with light green frame and dotted lines) "*Cuzco | Pérou | 1849 | Claude Gay | MUSÉUM DE PARIS*", on the back side stuck: white circle handwritten "3 | 49"; (2) handwritten (on white paper) "359"; (3) printed with handwritten inscriptions [here italicised] (on white paper) "*Catasticta | cora | Lucas | det. F. M. Brown*";

All the paralectotypes with additional (1) printed (on white paper in red) "TYPE"; (2) circle printed (on white paper with blue frame) "SYN- | TYPE"

Originally described and currently treated as a taxonomic species. Lectotype designated by LAMAS (1993: 150).

**demodice** BLANCHARD, 1852 — *Tatochila* BUTLER, 1870

"*Pieris demodice*" BLANCHARD, 1852–1854 (1852) (Orden VI. Lepidopteros.— Historia física y política de Chile segun documentos adquiridos en esta republica durante doce años de residencia en ella y publicada bajo los auspicios del Supremo Gobierno. Zoología 7: 13–14). Type locality: Chile, precise locality originally not stated (l. c.: 13–14).

Lectotype ♂ (**here designated**) with labels:

(1) printed with handwritten inscriptions [here italicised] (on white paper with light green frame and lines) "*Chili | 1841 | M<sup>r</sup>. Dumont d'Urville | MUSÉUM DE PARIS*", on the back side handwritten in pencil "demodice | Bl." and white circle stuck, handwritten "2370 | 41"; (2) circle printed (on white paper with blue frame) "SYN- | TYPE"; (3) printed (on white paper in red) "TYPE"; (4) handwritten (on white paper) "*Pieris DEMODICE | BLANCH.*"

Paralectotypes 3 ♀ with labels:

1. ♀: printed with handwritten inscriptions [here italicised] (on white paper with light green frame and lines) “*Chili* | 1841 | *M<sup>r</sup>. Dumont d’Urville* | MUSÉUM DE PARIS”, on the back side handwritten in pencil “demodice” and white circle stucked, handwritten “2370 | 41”

2. & 3. ♀: printed with handwritten inscriptions [here italicised] (on white paper with light green frame and lines) “*Chili* | 1841 | *M<sup>r</sup>. Dumont d’Urville* | MUSÉUM DE PARIS”, on the back side handwritten in pencil “demodice | Bl.”

All paralectotypes with additional: (1) circle printed (on white paper with blue frame) “SYN- | TYPE”; (2) printed (on white paper in red) “TYPE”; (3) handwritten (on white paper) “Pieris DEMODICE | BLANCH.”

Type material originally not stated (l. c.: 13–14). Lectotype designation has been done to fix the identity of the name. A synonym of *Tatochila theodice theodice* (BOISDUVAL, 1832).

**eleusis** LUCAS, 1852 — *Leptophobia* BUTLER, 1870

“*Pieris Eleusis*” LUCAS, 1852 (Description de nouvelles espèces de Lépidoptères appartenant aux collections entomologiques du Musée de Paris. – Rev. Mag. Zool. (2) 4: 331–332), Paris. Type locality:–“Colombie” (l. c.: 332).

Lectotype ♂ (Colour plate 3, Figs 3, 4) (**here designated**) with labels:

(1) printed with handwritten inscriptions [here italicised] (on white paper with light green frame and lines) “*Colombie* | MUSÉUM DE PARIS”, on the back side stucked, handwritten “Pieris | eleusis, Bd.”; (2) printed (on white paper in red) “TYPE”; (5) circle printed (on white paper with blue frame) “SYN- | TYPE”

Paralectotype ♂ with labels:

(1) printed (on olive paper) “MUSEUM DE PARIS | AMÉRIQUE MÉRID | ET COLOMBIE | PARZUDACKI 1842”; (2) printed (on white paper in red) “COTYPE”; (3) circle printed (on white paper with blue frame) “SYN- | TYPE”; (4) circle (green above, handwritten “2 | [illegible]”)

Originally described and currently treated as a taxonomic species — *Leptophobia eleusis* (LUCAS, 1852). Lectotype designation here was done to fix the identity of the name.

**erota** LUCAS, 1852 — *Hesperocharis*–FELDER, 1862

“*Pieris Erota*” LUCAS, 1852 (Description de nouvelles espèces de Lépidoptères appartenant aux collections entomologiques du Musée de Paris. – Rev. Mag. Zool. (2) 4: 329), Paris. Type locality: “Colombie?” (l. c.: 329).

Lectotype ♂ (**here designated**) with labels:

paper with blue frame) “SYN- | TYPE”; (3) printed (on white paper in red) “TYPE”

Type material originally not stated (l. c.: 329). Lectotype designation has been done to fix the identity of the name. Originally described and currently treated as a taxonomic species.

**gai** BLANCHARD, 1852 — *Mathania* OBERTHÜR, 1890

(1) printed (on white paper with light green frame and lines) “MUSÉUM DE PARIS”, on the back side green label stucked, handwritten “P. Erota | Boisd”; (2) circle printed (on white “*Pieris Gayi*” BLANCHARD, 1852–1854 (1852) (Orden VI. Lepidopteros.— Historia física y política de Chile segun documentos adquiridos en esta republica durante doce años de residencia en ella

v publicada bajo los auspicios del Supremo Gobierno. Zoología 7: 10; Pl. 1: Fig. 4). Type locality: "Santa Rosa" (l. c.: 10).  
Syntypes 2 ♀♀ with labels [both]:

(1) printed with handwritten inscriptions [here italicised] (on white paper with light green frame, lines) "*Chili* | 1843 | Mr. Gay | MUSÉUM DE PARIS", on the back side white circle sticked, handwritten "19143"; (2) handwritten (on white paper, black framed) "SYNTYPE | *Pieris gayi* | Blanchard, 1852 | G. Lamas det. 1990"; (3) circle printed (on white paper with blue frame) "SYN- | TYPE"; (4) printed with handwritten inscriptions [here italicised] (on white paper in red) "TYPE | *de Blanchard*"  
Type material originally not stated (l. c.: 10). A synonym of *Mathania leucothea* (MOLINA, 1782).

**hebra** LUCAS, 1852 — *Catacticta* BUTLER, 1870

"*Euterte Hebra*" LUCAS, 1852 (Description de nouvelles espèces de Lépidoptères appartenant aux collections entomologiques du Musée de Paris. – Rev. Mag. Zool. (2) 4: 196–197), Paris. Type locality:—"Colombie" (l. c.: 197).

Lectotype ♂ (Colour plate 4, Figs 3, 4) (**here designated**) with labels:

(1) printed with handwritten inscriptions [here italicised] (on white paper with light green frame and dotted lines) "*Bolivie* [stricked thru and below added in pencil "*Colombie*"] | MUSÉUM DE PARIS", on the back side sticked: green with black lines handwritten "*Cebra*, | *Luca* | *Bolivie* [stricked thru and before added in pencil "*Colombie*"]"; (2) handwritten (on white paper) "182"; (3) printed (on white paper in red) "TYPE"; (4) circle printed (on white paper with blue frame) "SYN- | TYPE"; (5) printed with handwritten inscriptions [here italicised] (on white paper) "CATASTÍCTA ♂ | *hebra* (Lucas 1852) | Type | det. J.H. Robert"

Type material originally not stated (l. c.: 196–197). Lectotype designation here has been done to fix the identity of the name. A taxonomic species.

**helena** LUCAS, 1852 — *Leptophobia* BUTLER, 1870

"*Pieris Helena*" LUCAS, 1852 (Description de nouvelles espèces de Lépidoptères appartenant aux collections entomologiques du Musée de Paris. – Rev. Mag. Zool. (2) 4: 332–333), Paris. Type locality:—"environs de Quito" (l. c.: 333).

Lectotype ♂ (Colour plate 3, Figs 5, 6) (**here designated**) with labels:

(1) printed with handwritten inscriptions [here italicised] (on white paper with light green frame and lines) "*Quito* | *Pérou* | 1851 | mr. Mougrand | MUSÉUM DE PARIS", on the back side handwritten in pencil "helena | Luc" and circle sticked, handwritten "319 | 51"; (2) printed (on white paper in red) "TYPE"; (3) circle printed (on white paper with blue frame) "SYN- | TYPE"

Paralectotype ♀ with labels:

(1) printed with handwritten inscriptions [here italicised] (on white paper with light green frame and lines) "*Quito* | *Pérou* | 1859 | mr. Mougrand | MUSÉUM DE PARIS", on the back side handwritten in pencil "helena | Luc" and circle sticked, handwritten "358 | 51"; (2) printed (on white paper in red) "TYPE"; (3) circle printed (on white paper with blue frame) "SYN- | TYPE"

Lectotype designation here has been done to fix the identity of the name. Originally described and currently treated as a taxonomic species.

**ilaire** GODART, 1819 — *Glutophrissa* BUTLER, 1887

“83. Piéride Ilaire... *Pieris Ilaire*” GODART, 1819 (In: LATREILLE & GODART, *Encyclopédie Méthodique. Histoire naturelle. Entomologie, ou histoire naturelle des crustacés, des arachnides, et des insectes* 9 (1): 111, 142). Type locality: “Brésil” (l. c.: 142).

Lectotype ○ (**here designated**) with labels:

(1) circle printed (on white paper with blue frame) “SYN- | TYPE”; (2) printed (on white paper in red) “TYPE”; (3) printed with handwritten inscriptions [here italicised] (on green paper) “MUSÉUM PARIS | *Brésil*”; (4) handwritten (on white paper) “Ilaise Goda | Bresil”

Paralectotype ○ with labels:

(1) circle printed (on white paper with blue frame) “SYN- | TYPE”; (2) printed (on white paper in red) “TYPE”; (3) printed (on green paper) “MUSÉUM PARIS”

The number of the type specimens originally not stated (l. c.: 142). Lectotype designation has been done to fix the identity of the name. There is one further male paralectotype in the National Museums of Scotland, Edinburgh (RSME) (GRIMSHAW, 1897). A synonym of *Glutophrissa drusilla* (CRAMER, 1777).

**josephina** GODART, 1819 — *Ganyra* BILLBERG, 1820

“136. Piéride Joséphine... *Pieris Josephina*” GODART, 1819 (In: LATREILLE & GODART, *Encyclopédie Méthodique. Histoire naturelle. Entomologie, ou histoire naturelle des crustacés, des arachnides, et des insectes* 9 (1): 115, 158). Type locality: Unknown [originally not stated] (l. c.: 158)

? Syntype ○ with labels:

(1) printed (on white paper with light green frame and lines) “MUSÉUM DE PARIS” on the back side handwritten in pencil “josephina | God.”; (2) handwritten (on white paper) “Type ss doute | à E Simbourg”; (3) printed (on white paper in red) “TYPE”; (4) circle printed (on white paper with blue frame) “SYN- | TYPE”

A specimen with uncertain status. Originally described from specimens belonging to M. DUFRESNE (l. c.: 158). One ○ and one ♀ syntypes exist in RSME (GRIMSHAW, 1897). Originally described and currently treated as a taxonomic species — *Ganyra josephina* GODART, 1819.

**limnoria** GODART, 1819 — *Melete* SWAINSON, 1833

“93. Piéride Limnoria... *Pieris Limnoria*” GODART, 1819 (In: LATREILLE & GODART, *Encyclopédie Méthodique. Histoire naturelle. Entomologie, ou histoire naturelle des crustacés, des arachnides, et des insectes* 9 (1): 112, 144–145). Type locality: “Brésil” (l. c.: 145).

Lectotype ○ (**here designated**) (Colour plate 5, Figs 5, 6) with labels:

(1) printed with handwritten inscriptions [here italicised] (on white paper with light green frame and dotted lines) “*Brésil* | *Mr Delalande* | MUSÉUM DE PARIS”, on the back side handwritten in pencil “limnoria | God.” and sticked: white circle handwritten “Brésil | Delalande”; (2) printed (on white paper in red) “TYPE”; (3) circle printed (on white paper with blue frame) “SYN- | TYPE”

Paralectotype ♀ with labels:

(1) printed with handwritten inscriptions [here italicised] (on white paper with light green frame and dotted lines) “*Brésil* | *Mr Delalande* | MUSÉUM DE PARIS”, on the back side handwritten in pencil “limnoria | God.” and sticked: white circle handwritten “Brésil | Delalande”; (2) printed (on white paper in red) “TYPE”; (3) circle printed (on white paper with blue frame)

“SYN- | TYPE”

Type material originally not stated (l. c.: 144–145). Lectotype designation here has been done to fix the identity of the name. Additional male paralectotype exists in RSME (GRIMSHAW, 1897). A synonym of *Melete lycimnia flippantha* (FABRICIUS, 1793).

*maya* BROWN, 1939 — *Catasticta* BUTLER, 1870

“*Catasticta flisa* form *maya*, n. form” BROWN, 1939 (New Forms and Species of the genus *Catasticta* I. – Bull. Brooklyn ent. Soc. 34 (2): 126). Type locality: “Copán, Guatemala” (l. c.: 126).

Holotype ♂ (originally designated) (Colour plate 4, Figs 5, 6) with labels:

(1) stamped with handwritten inscriptions [here italicised] (on white paper with green lines) “*Goban | Guatemala | 1882 | H. de Zurckheim*”, on the left side “COLL. BOULLET”, on the right “MUSEUM PARIS”; (2) handwritten (on white paper) “148”; (3) printed (on red paper) “TYPE”; (4) handwritten (on red paper) “TYPE | *Catasticta | flisa* f. *maya* | F. M. Brown”; (5) handwritten (on white paper) “*Catasticta | flisa* form | *maya* Brown | Bull. Brooklyn ent. | Soc., 34, 1939, p. 126”

Originally described at infrasubspecific level, an individual form of *Catasticta flisa flisandra* REISSINGER, 1972 (EITSCHBERGER & RACHELI, 1998: 14).

*modesta* LUCAS, 1852 — *Catasticta* BUTLER, 1870

“*Euterpe Modesta*” LUCAS, 1852 (Description de nouvelles espèces de Lépidoptères appartenant aux collections entomologiques du Musée de Paris. – Rev. Mag. Zool. (2) 4: 292–294), Paris. Type locality: “environs de Cuzco” (l. c.: 294).

Lectotype ♂ (**here designated**) with labels:

(1) printed with handwritten inscriptions [here italicised] (on white paper with light green frame and dotted lines) “*Cuzco | Pérou | 1849 | Cl. Gay | MUSÉUM DE PARIS*”, on the back side stuck: white circle handwritten “1 | 49” and white handwritten in pencil “*E. modesta* | Luc.”; (2) handwritten (on white paper) “297”; (3) printed (on white paper in red) “TYPE”; (4) circle printed (on white paper with blue frame) “SYN- | TYPE”; (5) printed with handwritten inscriptions [here italicised] (on white paper) “CATASTÍCTA | “*modesta modesta* | (Lucas 1852) | TYPE | det. J.H. Robert”

Type material originally not mentioned (l. c.: 292–294). The lectotype designation here has been done to fix the identity of the name. Originally described and currently treated as a taxonomic species — *Catasticta modesta* (LUCAS, 1852).

*mysia* GODART, 1819 — *Glutophrissa* BUTLER, 1887

“87. Piéride Mysia...*Pieris Mysia*” GODART, 1819 (In: LATREILLE & GODART, Encyclopédie Méthodique. Histoire naturelle. Entomologie, ou histoire naturelle des crustacés, des arachnides et des insectes 9 (1): 111, 143). Type locality: “Brésil” (l. c.: 143).

Lectotype ♀ (**here designated**) with labels:

(1) printed with handwritten inscriptions [here italicised] (on white paper) “Brésiil | auc. coll. | Type de Godart | Mysia | [*illegible in pencil*]”; (2) handwritten (on white paper) “*Pieris | mysia* Godart | Encycl. méthod., vol. 9, | p. 143 (P. Viette IV-1954)”; (3) printed (on red paper) “TYPE”; (4) printed (on white paper in red) “TYPE”; (5) circle printed (on white paper with blue frame) “SYN- | TYPE”

Type specimens number originally not stated (l. c.: 143). Lectotype designation has been done to fix the identity of the name. A junior subjective synonym of *Glutophrissa drusilla drusilla*: (CRAMER, 1777).

**notha** LUCAS, 1852 — *Catasticta* BUTLER, 1870

“*Euterpe Notha*” LUCAS, 1852 (Description de nouvelles espèces de Lépidoptères appartenant aux collections entomologiques du Musée de Paris. – Rev. Mag. Zool. (2) 4: 195), Paris. Type locality: “Venezuela” (l. c.: 195).

Lectotype ♂ (**here designated**) with labels:

(1) printed with handwritten inscriptions [here italicised] (on white paper with light green frame and dotted lines) “*Venezuela* | MUSÉUM DE PARIS”, on the back side stucked; white handwritten

“E. notha B. | Venezuela”; (2) handwritten (on white paper) “7”; (3) printed (on white paper in red) “TYPE”; (4) circle printed (on white paper with blue frame) “SYN- | TYPE”

Type material originally not stated. Lectotype designation here was done to fix the identity of the name. A junior homonym and subjective synonym of *Catasticta notha* (DOUBLEDAY, 1847).

**peruviana** LUCAS, 1852 — *Melete* SWAINSON, 1833

“*Pieris Peruviana*” LUCAS, 1852 (Description de nouvelles espèces de Lépidoptères appartenant aux collections entomologiques du Musée de Paris. – Rev. Mag. Zool., Paris (2) 4: 327–328). Type locality:–“Pérou (Cuzco)” (l. c.: 328).

Holotype ♂ (Colour plate 5, Figs 7, 8) (by monotypy) with labels:

(1) printed with handwritten inscriptions [here italicised] (on white paper with light green frame and dotted lines) “*Cuzco | Pérou | 1849 | Cl. Gay* | MUSÉUM DE PARIS”, on the back side stucked: green with black lines handwritten “peruviana | Luca | Pérou | Cl. Gay”; (2) printed (on white paper in red) “TYPE”; (4) circle printed (on white paper with red frame) “Holotype”

Treated as a taxonomic subspecies, *Melete lycimnia peruviana* (LUCAS, 1852) (LAMAS, 1990: 1).

**phaloe** GODART, 1819 — *Ganyra* BILLBERG, 1820

“131. Piéride Phaloe... *Pieris Phaloe*” GODART, 1819 (In: LATREILLE & GODART, Encyclopédie Méthodique. Histoire naturelle. Entomologie, ou histoire naturelle des crustacés, des arachnides et des insectes 9 (1): 115, 156–157). Type locality:–“Brésil” (l. c.: 157).

Lectotype ♂ (**here designated**) with labels:

(1) printed (on white paper with light green frame and lines) “MUSÉUM DE PARIS” on the back side stucked, handwritten “Phaloe”; (2) handwritten (on white paper with light green frame and lines) “Brésil”; (3) handwritten (on white paper) “*Pieris* | phaloe Godart | Encycl. méth., vol. 9, p. 156 (P. Viette 4-1954)”; (4) printed (on red paper) “TYPE”; (5) circle printed (on white paper with blue frame) “SYN- | TYPE”; (6) printed (on white paper in red) “TYPE”  
Paralectotypes ♂, ♀ with labels:

♂: (1) printed with handwritten inscriptions [here italicised] (on white paper with light green frame and lines) “*Brésil | mr. Delalande* | MUSÉUM DE PARIS”, on the back side green label stucked, handwritten “Endeis God. | Bré | Delalande”; (2) printed with handwritten inscriptions [here italicised] (on white paper in red) “TYPE | *de Godart*”; (3) circle printed (on white paper with blue frame) “SYN- | TYPE”



(1) printed with handwritten inscriptions [here italicised] (on white paper with light green frame and lines) "*Brésil* | MUSÉUM DE PARIS", on the back side green label stucked, handwritten "P. Phaloe, God. | @ ansia, Boisd. | Bresil."; (2) circle printed (on white paper with blue frame) "SYN- | TYPE"; (3) printed (on white paper in red) "TYPE"  
Type material originally not stated (l. c.: 156–157). Lectotype designation has been done to fix the identity of the name. Originally described and currently treated as a taxonomic species.

*polydice* BLANCHARD, 1852 — *Tatochila* BUTLER, 1870

"*Pieris polydice*" BLANCHARD, 1852–1854 (1852) (Orden VI. Lepidopteros.— Historia física y política de Chile segun documentos adquiridos en esta republica durante doce años de residencia en ella y publicada bajo los auspicios del Supremo Gobierno. - Zoología 7: 12). Type locality: "las cercanias de Concepcion" (l. c.: 12).

Syntypes 3 ♂♂, 1 ♀ with labels:

1. ♂: printed with handwritten inscriptions [here italicised] (on white paper with light green frame and lines) "*Chili* | 1851 | *achar Lorquin* | MUSÉUM DE PARIS", on the back side white circle stucked, handwritten "362 | 51"

2. ♂: printed with handwritten inscriptions [here italicised] (on white paper with light green frame and lines) "*Chili* | 1843 | *Cl. Gay* | MUSÉUM DE PARIS", on the back side white circle stucked, handwritten "15 | 43" and white stucked, handwritten "*Pieris* | *polydice* Blanch."

3. ♂: printed with handwritten inscriptions [here italicised] (on white paper with light green frame and lines) "*Chili* | 1851 | *achart Lorquin* | MUSÉUM DE PARIS", on the back side white circle stucked, handwritten "362 | 51"

4 ♀: same label as the specimen above.

All syntypes with additional: (1) circle printed (on white paper with blue frame) "SYN- | TYPE"; (2) handwritten (on white paper) "*Pieris* POLYDICE | BLANCH."; syntypes 1, 3, 4 with additional printed with handwritten inscriptions [here italicised] (on white paper in red) "TYPE" *de Polydice Bl.*"

The number of the type specimens originally not stated (l. c.: 12). Currently treated as a junior subjective synonym of *Tatochila mercedis* (ESCHSCHOLTZ, 1821).

*pylotis* GODART, 1819 — *Glennia* KLOTS, 1933

"137. Piéride Pylotis... *Pieris Pylotis*" GODART, 1819 (In: LATREILLE & GODART, Encyclopédie Méthodique. Histoire naturelle. Entomologie, ou histoire naturelle des crustacés, des arachnides et des insectes 9 (1): 115, 158). Type locality: "Brésil" (l. c.: 158).

Lectotype ♂ (**here designated**) with labels:

(1) circle printed (on white paper with blue frame) "SYN- | TYPE"; (2) printed (on white paper in red) "TYPE"; (3) printed with handwritten inscriptions [here italicised] (on white paper with light green frame and lines) "*Brésil* | *m. Delalande* | MUSÉUM DE PARIS", on the back side white circle stucked, handwritten "Brésil, | Delalande" and green, handwritten "Syletis. | God."

Paralectotypes 2 ♀♀ with labels:

1. ♀: printed with handwritten inscriptions [here italicised] (on white paper with light green frame and lines) "*Brésil* | *m. Delalande* | MUSÉUM DE PARIS", on the back side white circle stucked, handwritten "Brésil, | Delalande"

2. ♀: printed with handwritten inscriptions [here italicised] (on white paper with light green frame and lines) “*Brésil | mr. Delalande | MUSÉUM DE PARIS*”

Both paralectotypes with additional: (1) circle printed (on white paper with blue frame) “SYN- | TYPE”; (2) printed (on white paper in red) “TYPE”

Type material originally not stated (l. c.: 158). Lectotype designation has been done to fix the identity of the name. Originally described and currently treated as a taxonomic species — *Glennia pylotis* (GODART, 1819).

**rochereaui** LE CERF, 1924 — *Catasticta* BUTLER, 1870

“*Catasticta Rochereaui* nov. sp.” LE CERF, 1924 (Lépidoptères nouveaux de la collection du Muséum [Rhopalocères]. – Bull. Mus. natl. Hist. nat. Paris **30** (2): 138–139). Type locality:– “Colombie septentrionale, environs de Pamplona” (l. c.: 139).

Holotype ♂ (originally designated) (Colour plate 4, Figs 7, 8) with labels:

(1) printed with handwritten inscriptions [here italicised] (on green paper) “MUSÉUM DE PARIS | *Env. de Pamplona | Colombie | Pere Rochereau | 1923*”; (2) handwritten (on white paper) “324”; (3) printed (on red paper) “TYPE”; (4) circle printed (on white paper with red frame) “Holo- | type”; (5) handwritten (on white paper with red frame and lines) “rochereau | ♀ Type Le Cerf”; (6) handwritten (on white paper) “*Catasticta | rochereaui* Le Cerf | Bull. Museum | 1924, p. 138”

Currently treated as a taxonomic subspecies,

*Catasticta (Leodontoia) cinerea rochereaui* LE CERF, 1924.

**sebennica** LUCAS, 1852 — *Catasticta* BUTLER, 1870

“*Euterpe Sebennica*” LUCAS, 1852 (Description de nouvelles espèces de Lépidoptères appartenant aux collections entomologiques du Musée de Paris. – Rev. Mag. Zool. (2) **4**: 294–295), Paris. Type locality:– “Mexique” (l. c.: 295).

Lectotype ♂ (**here designated**) with labels:

(1) printed with handwritten inscriptions [here italicised] (on white paper with light green frame and dotted lines) “*Coll. Lacordaire | MUSÉUM DE PARIS*”, on the back side handwritten in pencil “sebennica | Luc. | ♀” and stuck: white circle handwritten “L.”; (2) handwritten (on white paper) “335”; (3) printed with handwritten inscriptions [here italicised] (on white paper in red) “TYPE” “*de Lucas* [in black]”; (4) printed with handwritten inscriptions [here italicised] (on white paper) “CATASTÍCTA ♂ | *sebennica (Luc)* | *Lectoholotype* | det. J.H. Robert”

Lectotype designation has been done to fix the identity of the name. A junior subjective synonym of *Euterpe teutila* DOUBLEDAY, 1847 (EITSCHBERGER & RACHELI, 1998: 27).

**semiramis** LUCAS, 1852 — *Catasticta* BUTLER, 1870

“*Euterpe Semiramis*” LUCAS, 1852 (Description de nouvelles espèces de Lépidoptères appartenant aux collections entomologiques du Musée de Paris. – Rev. Mag. Zool., Paris (2) **4**: 291–292). Type locality:– “Colombie” (l. c.: 292).

Lectotype ♂ (Colour plate 5, Figs 1, 2) with labels:

(1) printed (on white paper with light green frame and dotted lines) “MUSÉUM DE PARIS”, on the back side handwritten in pencil “semiramis | Luc.”; (2) handwritten (on white

paper) “305”; (3) printed (on white paper in red) “TYPE”; (4) printed with handwritten inscriptions [here italicised] (on white paper) “CATASTÍCTA ○ | *semiramis* (Lucas) | Lectoholotype | det. J.H. Robert”  
Lectotype designated by LAMAS & BOLLINO (2004: 13). Originally described and currently treated as a taxonomic species.

**stamnata** LUCAS, 1852 — *Leptophobia* BUTLER, 1870

“*Pieris Stamnata*” LUCAS, 1852 (Description de nouvelles espèces de Lépidoptères appartenant aux collections entomologiques du Musée de Paris. – Rev. Mag. Zool., Paris (2) 4: 330–331).

Type locality:–“Venezuela” (l. c.: 331).

Lectotype ♂ (Colour plate 3, Figs 7, 8) (**here designated**) with labels:

(1) handwritten (on white paper) “Colombie”; (2) printed (on green paper) “MUSÉUM PARIS”; (3) printed (on white paper in red) “TYPE”; (4) circle printed (on white paper with blue frame) “SYN- | TYPE”; (5) handwritten in pencil (on white paper) “stamnata | Luc.”

Abdomen is in envelope pinned below the specimen. Lectotype designation here has been done to fix the identity of the name. A taxonomic subspecies — *Leptophobia penthica stamnata* (LUCAS, 1852).

**telasco** LUCAS, 1852 — *Catacticta* BUTLER, 1870

“*Euterge Telasco*” LUCAS, 1852 (Description de nouvelles espèces de Lépidoptères appartenant aux collections entomologiques du Musée de Paris. – Rev. Mag. Zool. (2) 4: 290), Paris. Type locality: “environs de Cuzco” (l. c.: 291).

Lectotype ♂ (Colour plate 5, Figs 3, 4) with labels:

(1) printed with handwritten inscriptions [here italicised] (on white paper with light green frame and dotted lines) “*Cuzco* | *Pérou* | 1849 | Cl. Gay | MUSÉUM DE PARIS”, on the back side stuck: white circle handwritten “3 | 49” and green handwritten “Telasco, Luc”; (2) handwritten (on white paper) “49”; (3) printed (on white paper in red) “TYPE”; (4) printed with handwritten inscriptions [here italicised] (on white paper) “CATASTÍCTA | “*telasco* (H. Lucas 1852) | Lectoholotype ♂ | det. J.H. Robert”

Lectotype designated by LAMAS (1993: 142). Treated as a taxonomic subspecies, *Catacticta sisamnus telasco* (LUCAS, 1852) (LAMAS, 1993: 142).

**xanthodice** LUCAS, 1852 — *Tatochila* BUTLER, 1870

“*Pieris Xanthodice*” LUCAS, 1852 (Description de nouvelles espèces de Lépidoptères appartenant aux collections entomologiques du Musée de Paris. – Rev. Mag. Zool. (2) 4: 337–338), Paris.

Type locality: Venezuela.

Lectotype ♂ (**here designated**) with labels:

(1) circle printed (on white paper with blue frame) “SYN- | TYPE”; (2) printed (on white paper in red) “TYPE”; (3) printed (on white paper with light green frame and lines) “MUSÉUM DE PARIS”, on the back side handwritten in pencil “xanthodice”; (4) circle (green below) handwritten “34 | 42”; (5) handwritten (on white paper) “Pieris XANTHODICE | A preudre comme | lectotype de Lucas, | Revue et Mag. de Zool., 2<sup>e</sup> série, vol. 4, p. 337”

Paralectotypes ♂, ♀ with labels:

♂: (1) printed (on white paper with light green frame and lines) “MUSÉUM DE PARIS”,

on the back side circle stucked handwritten “34 | 42”; (2) handwritten (on white paper) “Pieris XANTHODICE | Lucas”

♀: (1) printed with handwritten inscriptions [here italicised] (on white paper with light green frame and lines) “*Pérou | 1851 | Echange Becker | MUSÉUM DE PARIS*”, on the back side circle stucked handwritten “359 | 51”; (2) handwritten (on white paper) “PIERIS | XANTHODICE | H. Lucas ♀”

Both paralectotypes with additional: (1) circle printed (on white paper with blue frame) “SYN- | TYPE”; (2) printed (on white paper in red) “TYPE”

Lectotype designation has been done to fix the identity of the name. Treated as a taxonomic species (HERRERA & FIELD, 1959: 511).

**Acknowledgments:** I must acknowledge, with grateful thanks, the COLPARSYST (Improving Human Potential Programme of the European Union) for providing the necessary funding for this project thus enabling it to be undertaken. I am very grateful to my colleagues in the Laboratoire d’Entomologie, Muséum National d’Histoire Naturelle, Paris and especially Mr JACQUES PIERRE (my scientific host) and Mrs NGUYEN THI HONG for their invaluable help. Many thanks to Dr GERARDO LAMAS, Museo de Historia Natural, Universidad Nacional Mayor de San Marcos, Lima for his comments and corrections. I thank my friend Dr ZSOLT BÁLINT, Hungarian Natural History Museum, Budapest for his company in the first two weeks, a very important fact, which certainly did my stay in Paris more pleasant. Special thanks to Mr PHIL ACKERY and especially Mrs KIM GOODGER, The Natural History Museum, London, for their assistance with literature. I am very obliged to Dr ULF EITSCHBERGER, Marktleuthen for the publication of this paper.

## References

- BLANCHARD, C. E. (1852–1854): Orden VI. Lepidopteros. – Historia física y política de Chile segun documentos adquiridos en esta republica durante doce años de residencia en ella y publicada bajo los auspicios del Supremo Gobierno. – Zoología 7: 1–112 (1852), pls. 1–7, Paris.
- BROWN, F. M. (1939): New Forms and Species of the genus *Catasticta* – I. (Pieridae: Rhopalocera). – Bull. Brooklyn Ent. Soc. 34 (2): 120–128, Lancaster, Pennsylvania.
- EITSCHBERGER, U. & T. RACHELI (1998): *Catasticta* studies (Lepidoptera: Pieridae). – Neue Ent. Nachr. 41: 5–94, Marktleuthen.
- GRIMSHAW, P. H. (1897): On some type-specimens of Lepidoptera and Coleoptera in the Edinburgh Museum of Science and Art. – Trans. Roy. Soc. Edinburgh 39 (1): 1–11, Edinburgh.
- GODART, J. B. (1819): In: LATREILLE, P. A. & J. B. GODART, Encyclopédie Méthodique. Histoire naturelle. Entomologie, ou histoire naturelle des crustacés, des arachnides et des insectes 9 (1): 13–328, Paris.
- HERRERA, J. & W. D. FIELD (1959): A Revision of the Butterfly Genera *Theochila* and *Tatochila* (Lepidoptera: Pieridae). – Proc. U. S. Natn. Mus. 108 (3408): 467–514, Washington.
- ICZN – International Code of Zoological Nomenclature (1999): Fourth edition, adopted by the International Union of Biological Sciences. – International Trust for Zoological Nomenclature, c/o The Natural History Museum, xxx + 306 pp., London.

- LAMAS, G. (1990): On the identity of *Pieris peruviana* LUCAS, 1852 (Lepidoptera, Pieridae). – Publ. Mus. Hist. nat. UNMSM (Lima) (A) **34**: 1–2, Lima.
- LAMAS, G. (1993): Lista comentada de los piéridos americanos descritos por J. RÖBER (Lepidoptera: Pieridae). – SHILAP Revta. lepid. **21** (83): 139–155, Madrid.
- LAMAS, G. (2004): Pieridae, pp. 99–117. In:–LAMAS, G. (Ed.), Checklist: Part 4A. Hesperioidea– Papilionoidea. In: HEPPNER, J. B. (Ed.), Atlas of Neotropical Lepidoptera. Volume 5A. – Association for Tropical Lepidoptera/Scientific Publishers, Gainesville.
- LAMAS, G. & M. BOLLINO (2004): Revisional notes on the “*amastris*” group of *Catantacta* BUTLER, 1870 (Lepidoptera: Pieridae), with descriptions of new species and subspecies. – Zootaxa **605**: 1–19, Auckland, New Zealand.
- LE CERF, F. (1924): Lépidoptères nouveaux de la collection du Muséum [Rhopalocères]. – Bull. Mus. natl. Hist. nat. Paris **30** (2): 137–139, Paris.
- LUCAS, P. H. (1852): Description de nouvelles espèces de Lépidoptères appartenant aux collections entomologiques du Musée de Paris. – Rev. Mag. Zool. (2)–4: 189–198, 290–295, 327, Paris.

Address of the author  
Dr STANISLAV P. ABADJIEV  
81 Lyuben Karavelov Street  
Sofia 1000  
Bulgaria  
e-mail: stas@abadjiev.net

#### Colour plate 3

- Figs 1, 2: *Pieris caesia* LUCAS, 1852 [*Leptophobia caesia* (LUCAS, 1852)], lectotype ♂.  
Figs 3, 4: *Pieris eleusis* LUCAS, 1852 [*Leptophobia eleusis* (LUCAS, 1852)], lectotype ♂.  
Figs 5, 6: *Pieris helena* LUCAS, 1852 [*Leptophobia helena* (LUCAS, 1852)], lectotype ♂.  
Figs 7, 8: *Pieris stamnata* LUCAS, 1852 [*Leptophobia penthica stamnata* (LUCAS, 1852)], lectotype ♂.

#### Colour plate 4

- Figs 1, 2: *Euterpe cora* LUCAS, 1852 [*Catantacta cora* (LUCAS, 1852)], paralectotype ♂.  
Figs 3, 4: *Euterpe hebra* LUCAS, 1852 [*Catantacta hebra* (LUCAS, 1852)], lectotype ♂.  
Figs 5, 6: *Catantacta flisa* f. *maya* BROWN, 1939 [*Catantacta flisa flisandra* f. *maya* BROWN, 1939], holotype ♂.  
Figs 7, 8: *Catantacta rochereaui* LE CERF, 1924 [*Catantacta cinerea rochereaui* LE CERF, 1924], holotype ♀.

#### Colour plate 5

- Figs 1, 2: *Euterpe semiramis* LUCAS, 1852 [*Catantacta semiramis* (LUCAS, 1852)], lectotype ♂.  
Figs 3, 4: *Euterpe telasco* LUCAS, 1852 [*Catantacta sisamnus telasco* (LUCAS, 1852)], lectotype ♂.  
Figs 5, 6: *Pieris limnorina* GODART, 1819 [= *Melete lycimnia flippantha* (FABRICIUS, 1793)], lectotype ♂.  
Figs 7, 8: *Pieris peruviana* LUCAS, 1852 [*Melete lycimnia peruviana* (LUCAS, 1852)], holotype ♂.

### Farbtafel 3/ Colour plate 3

ABADJIEV, S. P.: The primary types of Neotropical Pierinae in the collection of Laboratoire d'Entomologie, Muséum National d'Histoire Naturelle, Paris (Lepidoptera, Papilionoidea, Pieridae) - *Atalanta* (Juli 2005) 36 (1/2): 127-139, Würzburg.

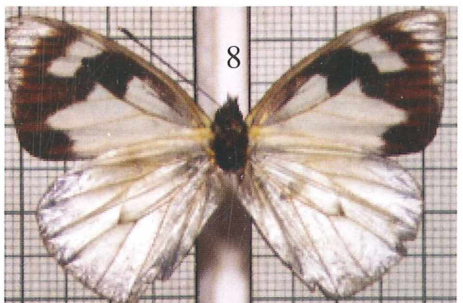
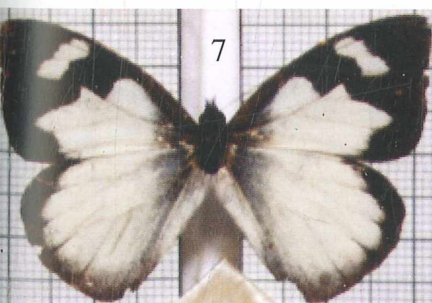
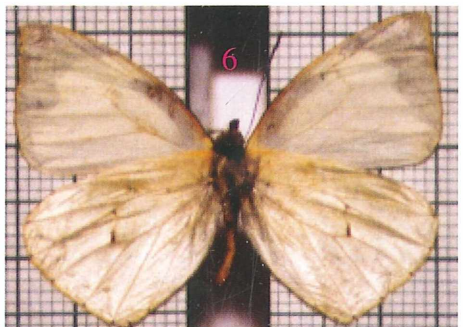
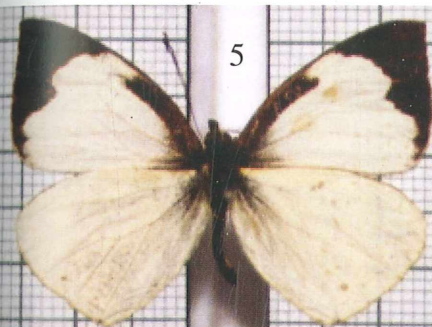
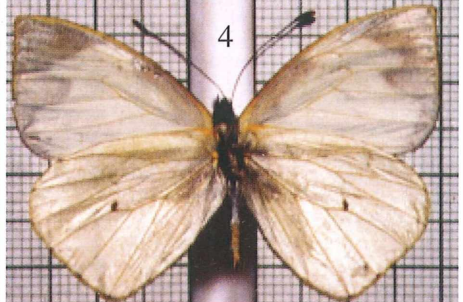
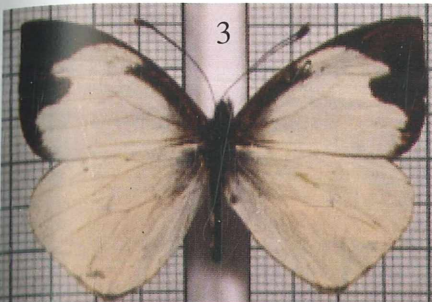
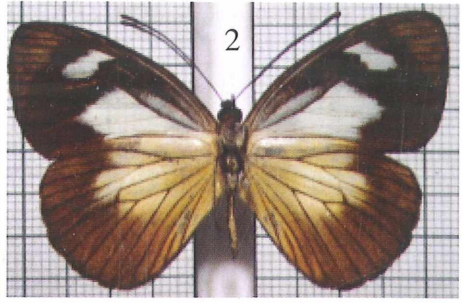
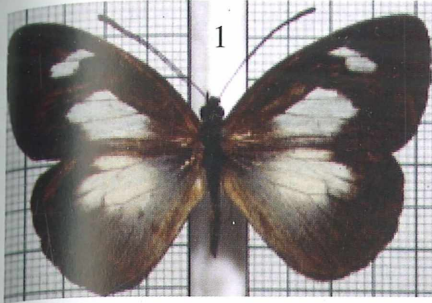
Figs 1, 2: *Pieris caesia* LUCAS, 1852 [*Leptophobia caesia* (LUCAS, 1852)], lectotype ♂.

Figs 3, 4: *Pieris eleusis* LUCAS, 1852 [*Leptophobia eleusis* (LUCAS, 1852)], lectotype ♂.

Figs 5, 6: *Pieris helena* LUCAS, 1852 [*Leptophobia helena* (LUCAS, 1852)], lectotype ♂.

Figs 7, 8: *Pieris stamnata* LUCAS, 1852 [*Leptophobia penthica stamnata* (LUCAS, 1852)], lectotype ♂.

### Farbtafel 3/ Colour plate 3



## Farbtafel 4/ Colour plate 4

ABADJIEV, S. P.: The primary types of Neotropical Pierinae in the collection of Laboratoire d'Entomologie, Muséum National d'Histoire Naturelle, Paris (Lepidoptera, Papilionoidea, Pieridae) - *Atalanta* (Juli 2005) 36 (1/2): 127-139, Würzburg.

Figs 1, 2: *Euterpe cora* LUCAS, 1852 [*Catasticta cora* (LUCAS, 1852)], paralectotype ♂.

Figs 3, 4: *Euterpe hebra* LUCAS, 1852 [*Catasticta hebra* (LUCAS, 1852)], lectotype ♂.

Figs 5, 6: *Catasticta flisa* f. *maya* BROWN, 1939 [*Catasticta flisa flisandra* f. *maya* BROWN, 1939], holotype ♂.

Figs 7, 8: *Catasticta rochereai* LE CERF, 1924 [*Catasticta cinerea rochereai* LE CERF, 1924], holotype ♀.



## Farbtafel 4/ Colour plate 4

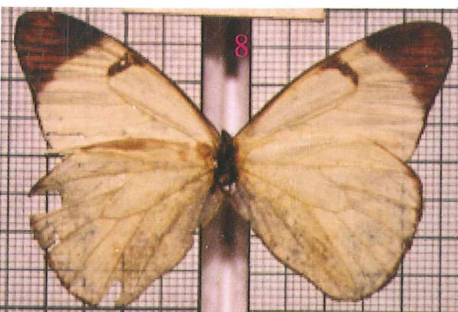
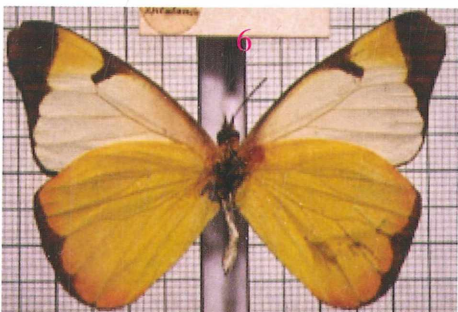
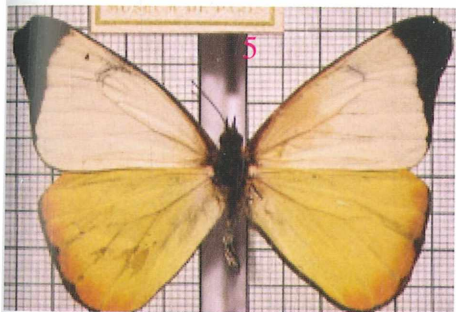
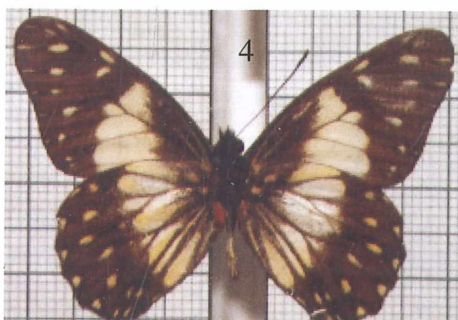
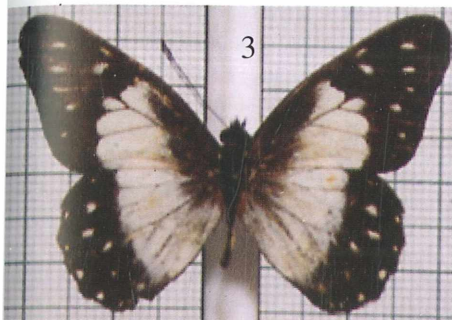
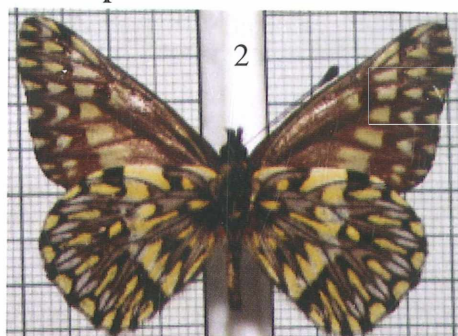
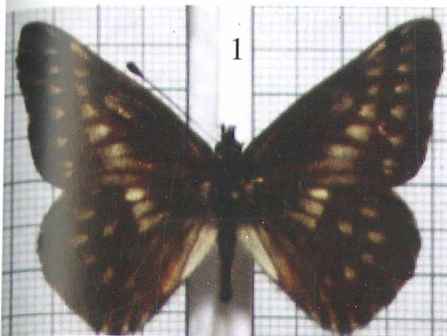


## Farbtafel 5/ Colour plate 5

ABADJIEV S. P.: The primary types of Neotropical Pierinae in the collection of Laboratoire d'Entomologie, Muséum National d'Histoire Naturelle, Paris (Lepidoptera, Papilionoidea, Pieridae) - Atalanta (Juli 2005) 36 (1/2): 127-139, Würzburg.

Figs 1, 2: *Euterpe semiramis* LUCAS, 1852 [*Catasticta semiramis* (LUCAS, 1852)], lectotype ♂.  
Figs 3, 4: *Euterpe telasco* LUCAS, 1852 [*Catasticta sisamnus telasco* (LUCAS, 1852)], lectotype ♂.  
Figs 5, 6: *Pieris limnoria* GODART, 1819 [= *Melete lycimnia flippantha* (FABRICIUS, 1793)], lectotype ♂.  
Figs 7, 8: *Pieris peruviana* LUCAS, 1852 [*Melete lycimnia peruviana* (LUCAS, 1852)], holotype ♂.

### Farbtafel 5/ Colour plate 5



# ZOBODAT - [www.zobodat.at](http://www.zobodat.at)

Zoologisch-Botanische Datenbank/Zoological-Botanical Database

Digitale Literatur/Digital Literature

Zeitschrift/Journal: [Atalanta](#)

Jahr/Year: 2005

Band/Volume: [36](#)

Autor(en)/Author(s): Abadjiev Stanislav P.

Artikel/Article: [The primary types of Neotropical Pierinae in the collection of Laboratoire d'Entomologie, Muséum National d'Histoire Naturelle, Paris 127-139](#)