

**New records and a redescription of
Trilochana oberthuerei LE CERF, 1917**

(Lepidoptera, Sesiidae, Sesiini)

VON

HEINZ FISCHER

eingegangen am 12.V.2006

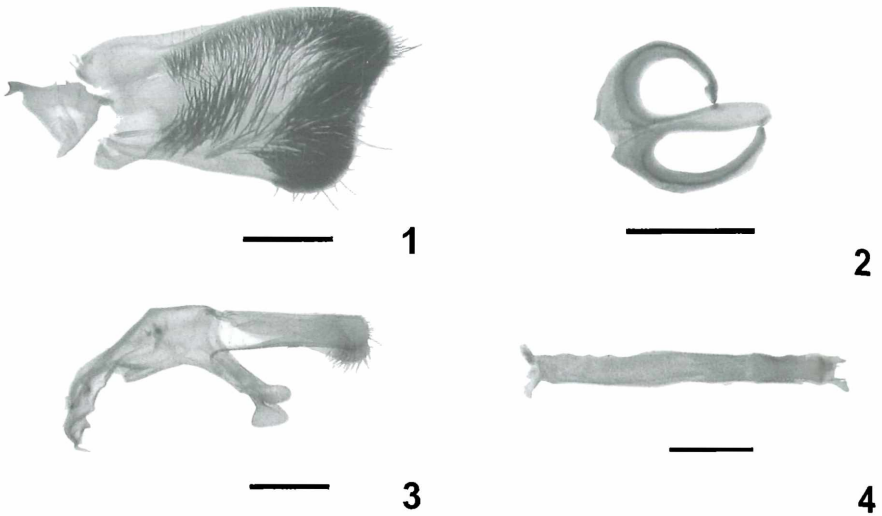
Summary: *Trilochana oberthuerei* LE CERF, 1917 was originally described from Java (Indonesia) and later also figured in SEITZ (1933) but the species has not been studied in detail. Recently some ♂♂ specimens were attracted by synthetic pheromons in the Cameron Highlands of Malaysia and a further description can now be given.

Zusammenfassung: *Trilochana oberthuerei* LE CERF, 1917 war aus Java (Indonesien) beschrieben worden und wurde später auch in SEITZ (1933) abgebildet, jedoch wurden Exemplare dieser Art bislang nicht genau untersucht. Vor kurzem konnte jedoch eine Anzahl ♂♂ in den Cameron Highlands Malaysias mit synthetischen Pheromonen angelockt werden, so daß nun eine weitere Beschreibung dieser Art erfolgen kann.

Description: ♂ (colour plate 7, fig. 1). Alar expanse 45mm-53mm; body length 26mm-28mm; forewing 23mm-26mm. **Head:** Antenna bipectinated, and black; frons dark brown to black; labial palpi ventrally yellow, with a dark margin. **Thorax:** Dorsally and ventrally black with large yellow spot on the metathorax, tegulae black; patagia yellow, with a small dorsal black spot. **Legs:** Black with long hairs, hind tibia with very long tufts of hair, mixed with white sheen distally. **Abdomen:** Long and slender, black with a metallic green sheen, tergites 2 and 4 with two yellow spots dorso-laterally; anal tuft black with very long hairs.

Forewing: Almost entirely scaled, black and opaque throughout with a green metallic sheen, with just a single hyaline stripe basally between Cu-stem and the anal area, as in the type species of *T. scolioides* MOORE, 1879. **Hindwing:** Black with a greenish sheen, opaque with transparent areas between Cu-stem and vein A2 basally and between A2 and the anal margin. Black cilia on the margins as in *T. scolioides* MOORE, 1879.

genitalia: Uncus long and well developed with hair-like setae on the inner surface apically; gumen of a form similar to that of *Trilochana illustris* KALLIES & ARITA, 1998 but longer and more rounded distally; gnathos well developed with very long and spoon-formed arms laterally; valva axe-shaped, and differing in form from other species of *Trilochana* in that it covered with long hair-like setae on both the ventral and dorsal margins even more dense than in *T. illustris* MOORE and in the type species *T. scolioides* MOORE; crista sacculi densely covered with hair-like scales; saccus as long as the vinculum, rounded distally, vinculum of round shape; aedoeagus about as long as the valva, with narrow sclerotized margin dorso-laterally; vesica densely covered with very short spinules.



Figs. 1- 4. *Trilochana oberthüri* LE CERF, 1917, ♂ genitalia. **1:** Valva; **2:** Vinculum and saccus; **3:** Tegumen, uncus and gnathos; **4:** Aedeagus; Scalebar 1 mm.

Discussion: *T. oberthüri* LE CERF, 1917 shows many external features which are very similar to the type species, *T. scolioides* MOORE, 1879, but it can be distinguished by the presence of yellow spots on tergits 1 and 4 and by the structure of the ♂ genitalia (especially by the valva and the density of the setae on the valva). A specimen from southern Vietnam has been pictured with an unclear identity (KALLIES & ARITA, 2005) but, in spite of similarities with in the structure of the ♂ genitalia are somewhat similar (AK 383 / YA 1879), a close association with *T. oberthüri* LE CERF can be excluded.

References

- KALLIES A. & Y. ARITA (2004): A survey of the clearwing moths of the tribe Sesiini (Lepidoptera, Sesiidae) from Vietnam and adjacent countries with a synopsis of the Oriental Sesiini fauna. - *Tinea* **18**: 65-95, Tokyo.
- LE CERF, F. (1917): Contribution a l'étude des Aegeriidae Description et iconographie d'espèces et de formes nouvelles ou peu communes. - *Études Lépid. Comp.* **14**: 137-388, Rennes.

Anschrift des Verfassers
 Dipl. Math. HEINZ FISCHER
 Rainerweg 25
 D-83700 Rottach
 e-mail: heinz-schmetterling@freenet.de

Colour plate 7/ Farbtafel 7, p. 287

Fig.1: *Trilochana oberthüri* LE CERF, 1917, Malaysia, Cameron Highlands, 330m, N 4°18'2" E 101°19'39", 19.3.-3.4.2005, leg. T.& M. STRÖHLE