

Hesperiidae of Vietnam, 17.¹ A further new species of *Coladenia* MOORE, [1881]

(Lepidoptera, Hesperiidae)

by

ALEXEY L. DEVYATKIN

received 12.VIII.2008

Summary: A new species, *Coladenia fenestrata* spec. nov., from the very north of Vietnam (Lao Cai province) is described and illustrated. The new species seems related to *C. vitrea* LEECH, 1893, but differs greatly in all its major characters.

Coladenia fenestrata spec. nov. (colour plate 20: 1, 2, 7)

Holotype ♂: North Vietnam, Lao Cai province, Thac Bac district, Hoang Lien Nature Reserve, Tram Ton pass, evergreen forest at 1800 m, Golden stream, 2.IV.2007, A. L. MONASTYRSKII leg. Paratypes: 3 ♂♂ with the same data. One paratype will be deposited in the collection of The Natural History Museum, London (BMNH); the holotype and other paratypes are kept in the collection of the Department of Entomology, Moscow State University.

Description: Antennae chequered, club black, with a whitish spot below before apiculus. Palpi above black, below whitish, with the 3rd segment black.

Upperside (colour plate 20: 1): Forewing. Ground colour dark greyish brown, with whitish suffusion in the basal part and along dorsum, this suffusion being sharper and lunulated in the postdiscal area; 3 subapical rounded or slightly elongated hyaline spots in spaces 6-8, that in space 7 shifted basad; in one paratype there are 2 small additional spots in spaces 4 and 5. All discal series of hyaline spots conjoined, including 2 large subequal spots in the cell and space 2 as well as 3 other small spots in spaces 1b, 3 and near costa; a small additional lower spot in space 1b conspicuously detached towards base; all hyaline spots pure white.

Hindwing: Ground colour in the basal part the same as on the forewing, with a whitish suffusion; however, the dominating colour is white, due to a great development of hyaline spots and a white tornal half of termen and dorsum. Discal hyaline spots large, especially that in the cell, and conjoined; the postdiscal series is extremely extended and merged into a single band, leaving only a brownish cell-end streak between it and the discal spots. Tornal half of termen pure white, with 4-5 small black dots at the end of veins and a full set of larger dark spots separating the discal and postdiscal series of hyaline spots; all hyaline spots white as on the forewing.

Underside (colour plate 20: 2): Forewing pattern the same as on the upperside, but the white suffusion is sharper and extended, thus making the base and dorsum in spaces 1a-1b totally white except the very tornus. Hindwing totally white except faint dark streaks near base, at distal ends of hyaline spots and dark dots at ends of veins. Fringes brown on forewing (whitish in space 1b), white on hindwing. Length of forewing 21.0 – 21.5 mm.

¹For (16) see DEVYATKIN, A. L. (2007): A new species and a new record of the Hesperiidae from Central Vietnam, with a revisional note on the genus *Hidari* DISTANT, 1886 (Lepidoptera, Hesperiidae). - Atalanta 38 (3/4): 347-349, Würzburg.

♂ genitalia (fig. 1): Uncus much shorter than tegumen, broad, more or less evenly tapered but locally extended before the blunt tip with rounded angles; the central dorsal part may be seen as slightly protruding (dorsal view); in the lateral view, the basal part of uncus is extended towards gnathos and angled, while the distal part is rather thin and shows a clear border between the nose-like central lobe and the ventrally bent tip which is rounded and finely spined. Gnathos rounded and spined throughout both from ventral and lateral sides. Clasp long and relatively wide, with a long and curved costal process, which is serrate from the distal and dorsal sides; cuiller broad, its ventro-distal part smooth and rounded, the dorso-distal part being serrate and waved inwards, looking angled from the lateral view. Aedeagus slender, as long as clasp, curved, with a short but strong spine in the distal third; vesica with a kind of a very large spoon-shaped cornutus, covered with numerous microspines at base.

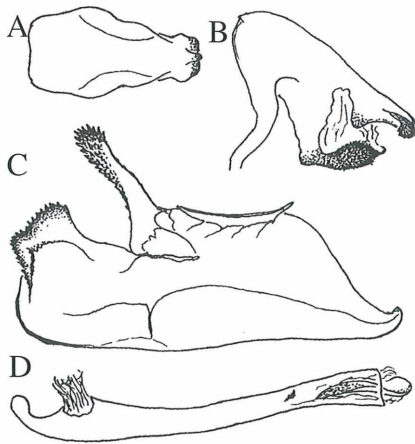


Fig. 1. *Coladenia fenestrata* spec. nov., ♂ genitalia (paratype). A, B: Tegumen and uncus, dorsal and lateral view; C: left clasp, inner view; D: aedeagus, lateral view.

Diagnosis and discussion: Judging from the wing pattern, the new species is related to the West Chinese *C. vitrea* LEECH, 1893 (col. pl. 20: 3), all hyaline spots in the former being much enlarged and the whitish suffusion of the hindwing turned into a pure white colour, thus making the general appearance of the two species entirely different. The extended and merged white hyaline spots on hindwing can be found in another obviously related species, *C. sheila* EVANS, 1939 from S.E. China, but there are no traces of whitening at the termen in the latter (col. pl. 20: 4). Two other Chinese species with relatively reduced hyaline pattern, viz. *C. hoenei* EVANS, 1939 from S.E. China (col. pl. 20: 5) and *C. maeniata* OBERTHÜR, 1896 from E. Thibet (col. pl. 20: 6), may add to the membership of this species group, characterized by a broad and blunt cuiller and a long and serrate costal process of clasp. This

group seems to be rather compact in the external and distributional characters and may theoretically be treated as a subgenus within the genus *Coladenia* MOORE, [1881].

Acknowledgements: I wish to express my deep gratitude to the persons and organizations without whose help the publication of this paper would not have been possible: Dr. A. L. MONASTYRSKII (Vietnam-Russia Tropical Centre, Hanoi, Vietnam), my friend and colleague, for placing the material on the new species at my disposal; Mr. P. R. ACKERY and Mrs. K. GOODGER (The Natural History Museum, London, UK) (BMNH), for the permission to work with the collections of the Museum, to make photographs for scientific purposes and for their kind help during my visits.

Address of the author: Dr. ALEXEY L. DEVYATKIN, Department of Entomology, Faculty of Biology, Moscow State University, 119992 Moscow, RUSSIA

Colour plate 20/ Farbtafel 20

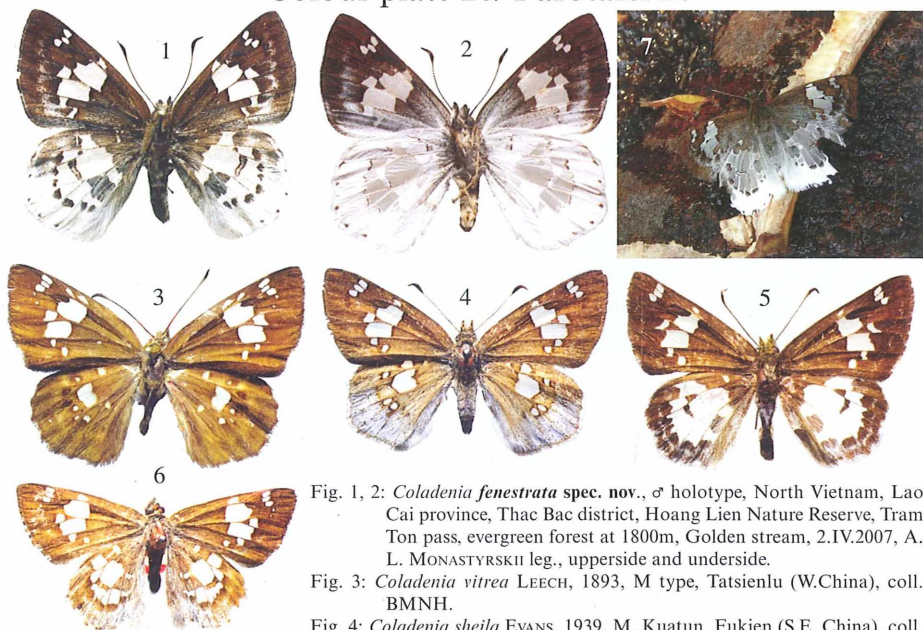


Fig. 1, 2: *Coladenia fenestrata* spec. nov., ♂ holotype, North Vietnam, Lao Cai province, Thac Bac district, Hoang Lien Nature Reserve, Tram Ton pass, evergreen forest at 1800m, Golden stream, 2.IV.2007, A. L. MONASTYRSKII leg., upperside and underside.

Fig. 3: *Coladenia vitrea* LEECH, 1893, M type, Tatsienlu (W.China), coll. BMNH.

Fig. 4: *Coladenia sheila* EVANS, 1939, M, Kuatun, Fukien (S.E. China), coll. BMNH.

Fig. 5: *C. hoenei* EVANS, 1939, F, Tapaishan in Tsinling (S.E. China), coll. BMNH.

Fig. 6: *C. maeniata* OBERTHÜR, 1896, M type, Maenia, Thibet, coll. BMNH.

Fig. 7: *Coladenia fenestrata* spec. nov., ♂ paratype in nature (photo by A. L. MONASTYRSKII).

Colour plate 20A/ Farbtafel 20A

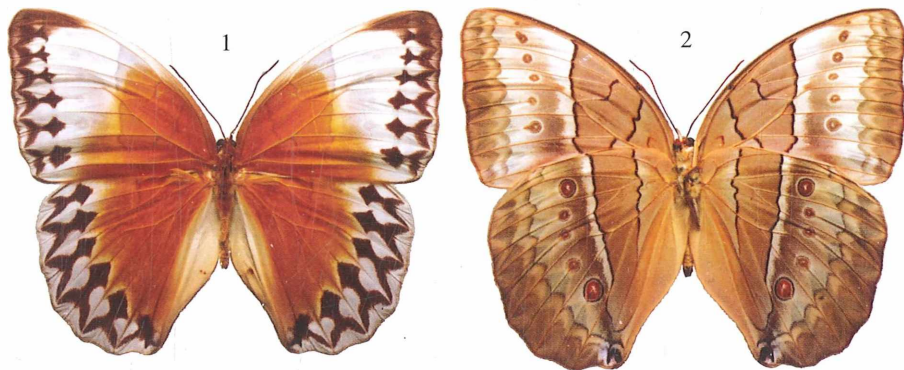


Fig. 1, 2: *Stichophthalma louisa louisa* (WOOD-MASON, 1877), ♂, Burma, Tenasserim, upperside and underside.

ZOBODAT - www.zobodat.at

Zoologisch-Botanische Datenbank/Zoological-Botanical Database

Digitale Literatur/Digital Literature

Zeitschrift/Journal: [Atalanta](#)

Jahr/Year: 2008

Band/Volume: [39](#)

Autor(en)/Author(s): Devyatkin Alexey L.

Artikel/Article: [Hesperiidae of Vietnam, 17.1 A further new species of Coladenia Moore, \[1881\] 279-280](#)