

A new subspecies of the Genus *Cyllogenes* BUTLER, 1868 from SE. Tibet

(Lepidoptera, Nymphalidae)

by

SONG-Yun LANG & HAO HUANG

received 31.X.2012

Abstract: *Cyllogenes janetae loba* subsp. nov., from Medog County, SE. Tibet, China is described and illustrated. *Cyllogenes akikoe* MORITA & UEMURA, 2006, described from N. Myanmar, is considered to be a subspecies of *Cyllogenes janetae* DE NICÉVILLE, 1887: *Cyllogenes janetae akikoe* MORITA & UEMURA stat. nov. A check list including all known taxa of the genus *Cyllogenes* is provided.

Cyllogenes BUTLER, 1868 (Satyrinae: Melanitini) is a small oriental genus. Until now, six species and two subspecies of *Cyllogenes* have been recognized (SMILES, 1973; CHOU & QI, 1999; MONASTYRSKII, 2005; MORITA & UEMURA, 2006). Butterflies of *Cyllogenes* are crepuscular, but they also fly in shady rainforests by day. Until now, three subspecies of *Cyllogenes janetae* DE NICÉVILLE, 1887 have been recognised. *Cyllogenes akikoe* MORITA & UEMURA, 2006 was described from NE. Kachin, N. Myanmar, which is closely related to *C. janetae* DE NICÉVILLE. According to MORITA & UEMURA (2006), *Cyllogenes akikoe* MORITA & UEMURA can be distinguished from *C. janetae* DE NICÉVILLE by the narrower subapical band on upperside of forewing and the almost obsolete submarginal band on upperside of hindwing. However, material of *Cyllogenes janetae* DE NICÉVILLE from Medog, SE. Tibet exhibits that those characters mentioned above should be geographic variations but not specific characters. Thus, *Cyllogenes akikoe* MORITA & UEMURA is considered to be a subspecies of *Cyllogenes janetae* DE NICÉVILLE: *Cyllogenes janetae akikoe* MORITA & UEMURA stat. nov. Material from Medog can be distinguished from all known subspecies of *Cyllogenes janetae* DE NICÉVILLE, and it is described as a new subspecies here.

Cyllogenes janetae loba subsp. nov. (figs: 1-4)

Holotype: ♂, CHINA: TIBET: 80K, Medog, 2000 m, 12.VIII.2012, leg. SONG-Yun LANG, deposited in Dr. SONG-Yun LANG's private collection (LSY) in Chengdu, China. Paratypes: 1 ♂, CHINA: TIBET: 80K, Medog, 2000 m, 8.VIII.2012, leg. CHAO WU, deposited in Chongqing Museum of Natural History (CMNH) in Beibei, China; 2 ♂♂, CHINA: TIBET: Laohuzui, Hanmi to Aniqiao, Medog, 1200 m, 9.VIII.2005, leg. HAO HUANG, deposited in Dr. HAO HUANG's collection (HH) in Qingdao, China.

Length of forewing: ♂ 41-45 mm.

♂ genitalia (figs: 7, 8): Tegumen normal in shape. Uncus with apex hooked. Gnathos absent. Saccus rather long and slender. Valva simply built, narrowly extending forwards with its basal half rather wide. Aedeagus almost straight; its middle area weakly spinose.

Diagnosis ♂: The new subspecies is similar to *C. j. akikoe* MORITA & UEMURA stat. nov. and can be easily distinguished from *C. j. janetae* DE NICÉVILLE, *C. j. fasciata* SMILES, 1973 and *C. j. orientalis* MONASTYRSKII, 2005 by its narrow subapical band on upperside of forewing. It can be distinguished from *C. j. akikoe* MORITA & UEMURA stat. nov. by the following combination of characters: 1. The subapical band on upperside of forewing is more bent inwards; 2. The subapical band on upperside of forewing obviously tapers towards the termen, whereas in the *C. j. akikoe* MORITA & UEMURA stat. nov. it is rather narrow and nearly equal width throughout; 3. The submarginal band on upperside of hindwing is weakly present, whereas in *C. j. akikoe* MORITA & UEMURA stat. nov. it is almost obsolete.

Notes: Mr. WEI HU, an insect dealer from Sichuan, provided us picture of a ♀ of *C. janetae loba* subsp. nov. (fig: 5) which was collected by him in Hanmi, Medog in this summer. It has a wide submarginal band on upperside of hindwing as *C. j. fasciata* SMILES. Its subapical band on upperside of forewing is wider than *C. j. akikoe* MORITA & UEMURA, 2006 stat. nov., but narrower than the other known subspecies.

Etymology: The name *loba* originates from the Loba, a primitive tribe from SE. Himalayas. Loba means the southern people in Tibetan language.

A check list of the genus *Cyllogenes* BUTLER, 1868

- | | |
|---|--|
| 1a. <i>Cyllogenes janetae janetae</i> DE NICÉVILLE, 1887
Distribution: Sikkim, Bhutan, Bengal. | 2. <i>Cyllogenes suradeva</i> (MOORE, 1857)
Distribution: N. India, Sikkim, Bhutan, N. Myanmar. |
| 1b. <i>Cyllogenes janetae fasciata</i> SMILES, 1973
Distribution: NE. India (Naga Hills). | 3. <i>Cyllogenes nigrimaculata</i> (CHOU & QI, 1999)
Distribution: SE. China (Fujian). |
| 1c. <i>Cyllogenes janetae orientalis</i> MONASTYRSKII, 2005
Distribution: N. Vietnam. | 4. <i>Cyllogenes woolletti</i> RILEY, 1923
Distribution: N. Borneo. |
| 1d. <i>Cyllogenes janetae akikoe</i> MORITA & UEMURA, 2006 stat. nov.
Distribution: N. Myanmar (NE. Kachin). | 5. <i>Cyllogenes milleri</i> MONASTYRSKII, 2005
Distribution: C. Vietnam. |
| 1e. <i>Cyllogenes janetae loba</i> LANG & HUANG subsp. nov.
Distribution (fig: 6): SE. Tibet (Medog). | |

Acknowledgements: We express our sincere thanks to the following colleagues and friends: Dr. ALEXANDER L. MONASTYRSKII (Hanoi, Vietnam), Mr. YUTAKA INAYOSHI (Tochigiken, Japan), Mr. KOTARO SAITO (Tokyo, Japan), Mr. MOTOKI SAITO (Okinawa, Japan), Mr. CHAO WU (Beijing), Mr. XIAO-DONG YANG (Yibin, Sichuan), Mr. CHANG-CHIN CHEN (Tianjin), Ms. GAN-YAN YANG (Beijing) and Mr. ZHAO-HUI PAN (Bayi, Tibet). We express our special thanks to Mr. WEI HU (Ya'an, Sichuan) for his useful information.

References

- CHOU, I. & S. QI (1999): A new species of Satyridae (Lepidoptera). - Entomological Journal of East China **8** (2): 4-5, Fuzhou.
- CHOU, I., YUAN, X. Q. & C. S. ZHANG (2002): New species & new subspecies, and new records of butterflies (Lepidoptera: Satyridae) from China (V). - Entomotaxonomia **23** (3): 201-216, Yangling.
- D'ABRERA, B. (1985): Butterflies of the Oriental Region. II. Nymphalidae, Satyridae & Amathusidae. - Hill House Publishers, Melbourne.
- MONASTYRSKII, A. L. (2005): New taxa and new records of butterflies from Vietnam 3 (Lepidoptera, Rhopalocera). - Atalanta **36** (1/2): 141-160, 386-391, Würzburg.
- MOORE, F. (1893–1896): Lepidoptera Indica **2**. - Lovell Reeve & Co., Ltd., London.
- MORITA, S. & Y. UÉMURA (2006): Description of a new species of butterfly belonging to the genus *Cyllogenes* BUTLER (Lepidoptera: Nymphalidae, Satyrinae). - Futao **52**: 16-17, pl. 3, Totori.
- SAITO, T., SAITO, K. & S. MIYAZAKI (2006): Notes on hitherto unknown male of *Cyllogenes milleri* MONASTYRSKII (Lepidoptera, Nymphalidae, Satyrinae) from Vietnam. - Gekkan-Mushi **420**: 40-41, Tokyo.
- SHIZUYA, H., WATANABE, Y., S. T., SAITO, K. & T. SOE (2005): Basic information on butterflies of Kachin state, Myanmar (Part 2). - Butterflies **39**: 29-39, Tokyo.
- SMILES, R. L. (1973): Revisional notes on the genera *Cyllogenes* BUTLER, *Gnophodes* DOUBLEDAY, and *Parantirrhoea* WOOD-MASON (Lepidoptera: Satyridae). - Entomologist **106**: 172-182, London.

Addresses of the authors

Dr. SONG-Yun LANG
Chongqing Museum of Natural History,
400700, Beibei, Chongqing, P. R. China
Email: langsongyun@gmail.com

Dr. HAO HUANG
503, East, No.1 Dong-ting-hu Road,
Qingdao, P. R. China
E-mail: cmdhxx@hotmail.com

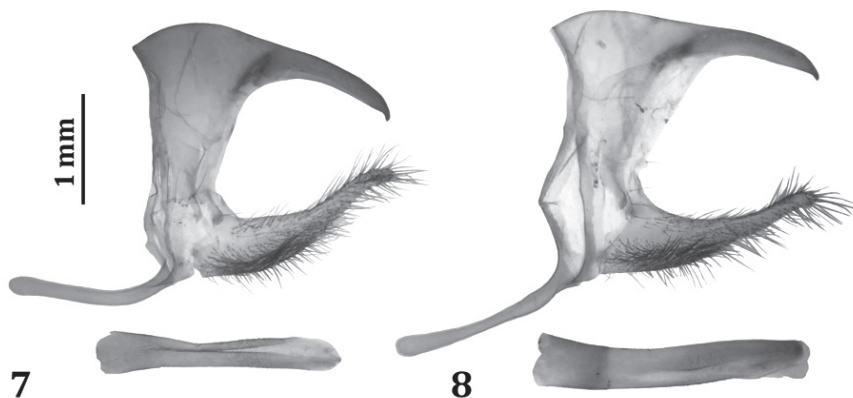


Fig. 7: ♂ genitalia of *Cyllogenes janetae loba* subspec. nov., paratype, Medog, Tibet, CMNH.

Fig. 8: ♂ genitalia of *Cyllogenes janetae loba* subspec. nov., holotype, Medog, Tibet, LSY.

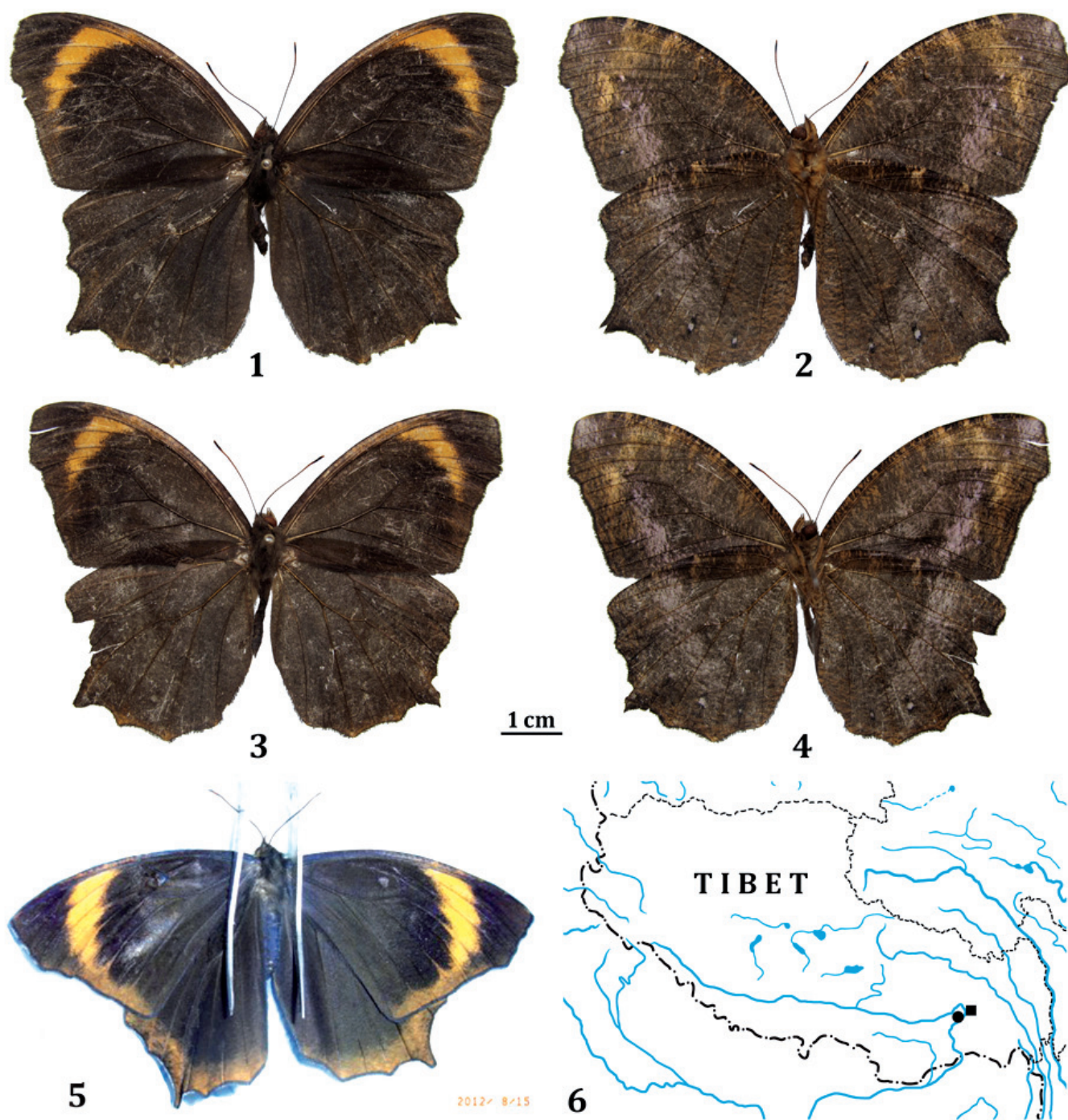


Fig. 1, 2: *Cyllogenes janetae loba subspec. nov.*, holotype ♂, Medog, Tibet, LSY, upper- and underside.

Fig. 3, 4: *Cyllogenes janetae loba subspec. nov.*, paratype ♂, Medog, Tibet, CMNH, upper- and underside.

Fig. 5: *Cyllogenes janetae loba subspec. nov.*, ♀, Medog, Tibet (photo provided by WEI HU).

Fig. 6: Distribution map of *Cyllogenes janetae loba subspec. nov.*: Black square = 80K, a place in Medog, Tibet; black round = Hanmi, a place in Medog, Tibet.

Description of a new species of the genus *Euthalia* HÜBNER, 1819 from Yunnan Province, China (Lepidoptera, Nymphalidae)

by

SONG-YUN LANG

received 3.IX.2012

Abstract: In this paper, a new species of the subgenus *Limbusa* MOORE, 1896, namely *Euthalia pseudoduda* spec. nov., from S. Yunnan Province, China is described and illustrated.

The oriental subgenus *Limbusa* MOORE, 1896, belonging to the genus *Euthalia* HÜBNER, 1819, has been revised by YOKOCHI (2010, 2011, 2012) recently. It is a very significant achievement on the study of the complex subgenus *Limbusa*. In his revisional works, YOKOCHI (2012) considered *Euthalia duda* STAUDINGER, 1886 and its relatives as a species group called the “*patala* group - Type A - Subtype A3”, which was also approximately defined as the *duda*-group (HUANG, 2002) or the *thibetana*-complex (MORISHITA, 1991; LANG, 2012) by other authors. When YOKOCHI (2012) discussed *E. duda* STGR. in his work, he mentioned that the present author will describe a new species from Jinghong, Yunnan, which is similar to *E. duda* STGR., in the near future. In LANG (2012), the present author provisionally considered the above-mentioned new species from Yunnan as *E. monbeigi* OBERTHÜR, 1907. In this paper, the present author has a chance to describe this new species. The common characteristics of the wing shape, pattern, and the ♂ genitalia had been described in YOKOCHI’s work and do not provide here.

Euthalia pseudoduda spec. nov. (figs: 1-4)

Euthalia monbeigi, LANG (2012: 234, fig. 277, pl. XII: 8, 9).

Euthalia sp., YOKOCHI (2012: figs. 442, 443).

Holotype ♂: CHINA, Yunnan, Jinghong, Menghan, 2007, leg. native collector, donated by Mr. CAO TIANWEN, deposited in the Zoological Collection of the Institute of Zoology, Chinese Academy of Sciences, Beijing (IZCAS). Paratype: 1 ♀, same data as holotype, in IZCAS.

Description: Length of forewing in ♂ 45 mm, in ♀ 45 mm. Wing pattern ♂: Upperside of forewing: Ground colour olive-drab; cilia white, stained with black beyond veins; discal band broad, creamy white in colour; subapical spots in spaces 6 and 8 creamy white. Upperside of hindwing: Ground colour blackish brown; cilia similar to forewing; discal band broad, waved distally, white in colour; a broad purple blue area present distad of the discal band. Underside: Ground colour brownish green; whitish spots same as the upperside; hindwing marginal white spots almost absent. ♀: Similar to ♂. Upperside of forewing: Discal band and subapical spots in spaces 6 and 8 pure white. Upperside of hindwing: Discal band pure white. Underside: Ground colour much paler than ♂; hindwing marginal white spots obscure. Antenna: upperside black, underside reddish brown (basing only upon ♀). ♂ genitalia: Valva (fig. 5): Long and rather wide; apex rather pointed, twisted nearly 90 degrees outwards and heavily spinose apically.

Diagnosis: In YOKOCHI (2012)’s “*patala* group - Type A - Subtype A3”, eight species have a broad blue area on upperside of hindwing, they are *Euthalia durga* (MOORE, 1858), *E. amplifascia* TYTLER, 1940, *E. duda* STAUDINGER, 1886, *E. tsangpoi* HUANG, 1999, *E. takeru* YOKOCHI, 2012, *E. chayensis* HUANG, 2001, *E. monbeigi* OBERTHÜR, 1907 and *E. sakota* FRUHSTORFER, 1913. This new species can be recognized from the above mentioned similar species by the following characters:

1. Apex of the valva is twisted, whereas in the other species it is not twisted.
2. Discal band on upperside of forewing is creamy white in this new species and *E. monbeigi* OBTH. whereas in the other species it is pure white.
3. Discal band of forewing is broad, whereas in *E. monbeigi* OBTH. it is narrower.

Etymology: The specific name *pseudoduda* composed by the Latin prefix *pseud-* and the name *duda*, means “false *duda*”.

Distribution: China (S. Yunnan).

Acknowledgements: The author expresses his sincere thanks to the following colleagues and friends: Dr. TAKASHI YOKOCHI from Aichi, Japan, Mr. CAO TIANWEN from Taiyuan and Mr. HUANG HAO from Qingdao.

References

- HUANG, H. (2002): Some new nymphalids from the valleys of Nujiang and Dulongjiang, China (Lepidoptera, Nymphalidae). - *Atalanta* 33 (3/4): 339-360, 430-441, Würzburg.
- LANG, S. Y. (2012): The Nymphalidae of China (Lepidoptera, Rhopalocera). Part I. - Tshikolovets Publications, Pardubice.
- MORISHITA, K. (1991): A guide to species of Euthaliini in the Orient (IX), Sino-Himalayan groups (5). - *Yadoriga* 151: 2-10, Tokyo.
- YOKOCHI, T. (2010): Revision of the Subgenus *Limbusa* MOORE, [1897] (Lepidoptera, Nymphalidae, Adoliadini) Part 1. Systematic arrangement and taxonomic list. - *Bull. Kitakyushu Mus. Nat. Hist. Hum. Hist.*, Ser. A, 8: 19-67, Kitakyushu.
- YOKOCHI, T. (2011): Revision of the Subgenus *Limbusa* MOORE, [1897] (Lepidoptera, Nymphalidae, Adoliadini) Part 2. Group division and descriptions of species (1). - *Bull. Kitakyushu Mus. Nat. Hist. Hum. Hist.*, Ser. A, 9: 9-106, Kitakyushu.
- YOKOCHI, T. (2012): Revision of the Subgenus *Limbusa* MOORE, [1897] (Lepidoptera, Nymphalidae, Adoliadini) Part 3. Group division and descriptions of species (2). - *Bull. Kitakyushu Mus. Nat. Hist. Hum. Hist.*, Ser. A, 10: 9-100, Kitakyushu.

Address of the author

Dr. SONG-YUN LANG

1 Chongqing Museum of Natural History, 400700, Beibei, Chongqing, P. R. China

2 Institute of Zoology, Chinese Academy of Sciences, 100101, Beijing, P. R. China

Email: langsongyun@gmail.com

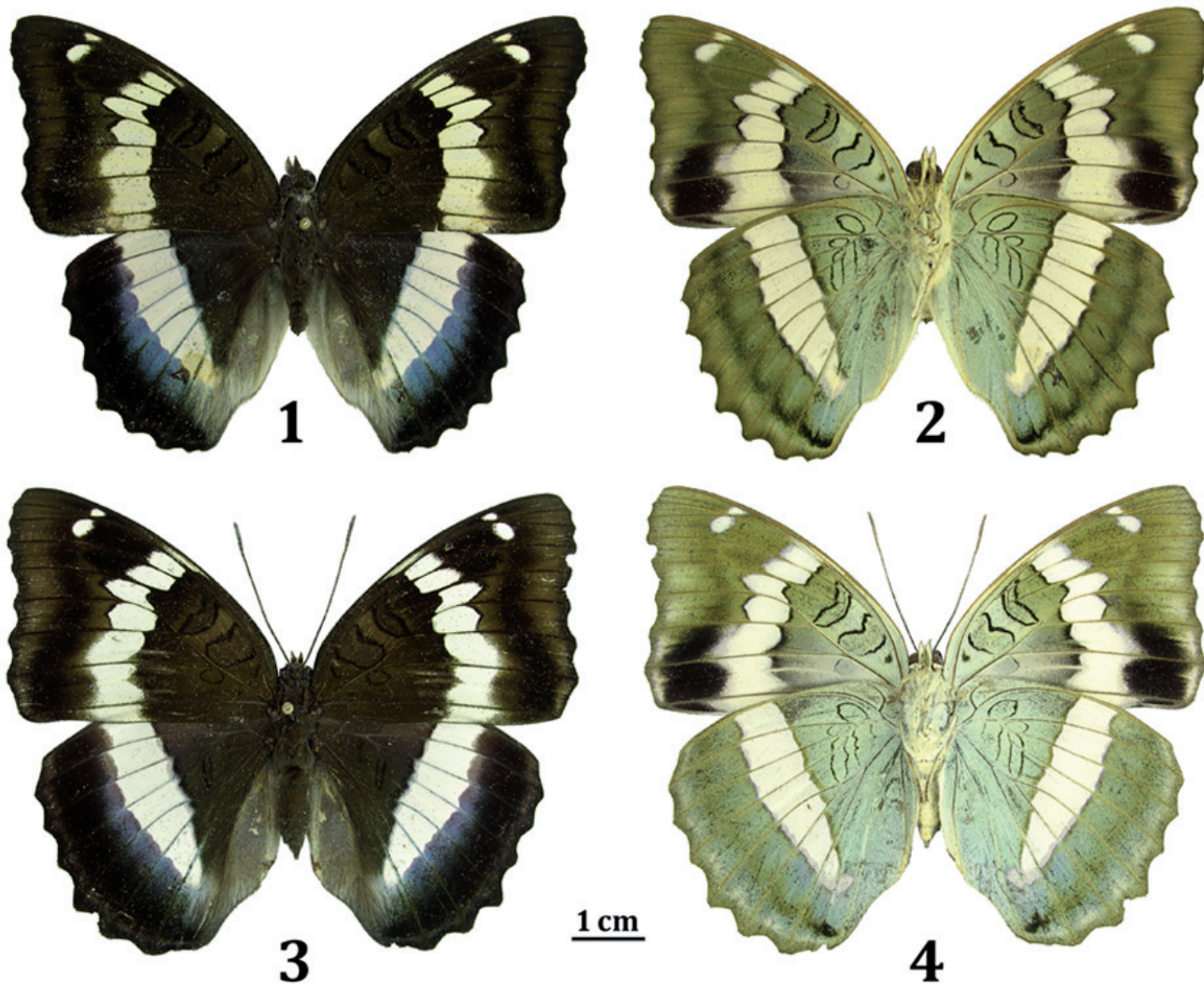


Fig. 1, 2: *Euthalia pseudoduda* spec. nov., holotype ♂, Menghan, Jinghong, Yunnan, upper- and underside.
 Fig. 3, 4: *Euthalia pseudoduda* spec. nov., paratype ♀, Menghan, Jinghong, Yunnan, upper- and underside.



Fig. 5: ♂ valva of *Euthalia pseudoduda* spec. nov.

ZOBODAT - www.zobodat.at

Zoologisch-Botanische Datenbank/Zoological-Botanical Database

Digitale Literatur/Digital Literature

Zeitschrift/Journal: [Atalanta](#)

Jahr/Year: 2012

Band/Volume: [43](#)

Autor(en)/Author(s): Huang Hao, Lang Song-Yun

Artikel/Article: [A new subspecies of the Genus Cyllogenes Butler, 1868 from SE. Tibet 509-511](#)