

Description of a new subspecies of *Ypthima dohertyi* (MOORE, [1893]) from Guangxi, S.W. China (Lepidoptera, Nymphalidae & Satyrinae)

by

SONG-YUN LANG

received 12.I.2018

Abstract: A new subspecies, *Y. dohertyi cenwanga* **subspec. nov.** is described from Mt. Cenwang Laoshan, western Guangxi Zhuang Autonomous Region, southwestern China.

Abbreviations

CMNH: Chongqing Museum of Natural History, Beibei, Chongqing, CHINA

LSY: Collection of Song-yun Lang, Beibei, Chongqing, CHINA

Ypthima dohertyi (MOORE, [1893]) belongs to the *sakra*-group of the subgenus *Thymipha* MOORE, 1893 (Satyrini) and until now three subspecies have been known, viz. the nominate subspecies from Myanmar (Shan to Dawngas Range), N. Thailand, Laos and Yunnan; *Y. d. khasia* ELIOT, 1967 from Assam and N. Myanmar; *Y. d. mossmanni* ELIOT, 1967 from Malay Peninsula and central Vietnam (MOORE, 1893; ELIOT, 1967; SHIRÔZU & SHIMA, 1979; UÉMURA & MONASTYRSKII, 2004; MONASTYRSKII, 2005; SHIZUYA et al., 2005; NAKAMURA & WAKAHARA, 2012). In this research, a new subspecies of *Y. dohertyi* (MOORE) is described from Cenwang Laoshan, which is a mountain with the highest peak of 2062 m and locates at the southeastern fringe of the Yunnan-Guizhou Plateau, in W. Guangxi. This new subspecies flies together with *Y. evansi* ELIOT, 1967 and *Y. sakra leechi* FORSTER, 1948 of the same species group in nature. Furthermore, Mt. Cenwang Laoshan is also the northeasternmost locality of *Y. dohertyi* (MOORE) and *Y. evansi* ELIOT.

Ypthima dohertyi cenwanga **subspec. nov.** (figs: 1, 2, 5, 9-c)

Holotype (HT) ♂, CHINA: Guangxi, Tianlin, Mt. Cenwang-Laoshan, 1700 m, 7.V.2015, leg. SONGYUN LANG (CMNH).

Etymology: The specific name *cenwanga* is named after Mt. Cenwang-Laoshan, the type locality.

Diagnosis: Geographically, range of the new subspecies is well separated from those of *Y. d. khasia* ELIOT and *Y. d. mossmanni* ELIOT by that of *Y. d. dohertyi* (MOORE), and it can be easily distinguished from the latter by the combination of the following characters:

1. On dorsal forewing, ♂ brand reduced as a narrow but prominent bar along the cubitus, whereas it presents as a wide prominent patch in *Y. d. dohertyi* (MOORE).
2. On ventral side, ground colour is somewhat darker than that of *Y. d. dohertyi* (MOORE).
3. Dorsal lobe of valva is less protruding than that of *Y. d. dohertyi* (MOORE).
4. Valva apex is less protruding than that of *Y. d. dohertyi* (MOORE).

The new subspecies can be distinguished from sympatric *Y. evansi* ELIOT by the combination of the following characters:

1. On dorsal forewing, male brand present as a prominent bar along the cubitus, whereas it is present as an obscure patch in *Y. evansi* ELIOT.
2. On ventral side, striation is comparatively coarse, whereas it is fine and dense in *Y. evansi* ELIOT.
3. Valva apex is less protruding than that of *Y. evansi* ELIOT.
4. Lamina of androconia is about one and a half length of that of *Y. evansi* ELIOT.

The new subspecies is also superficially similar to *Y. persimilis* ELWES & EDWARDS, 1893 and can be distinguished from the latter by the combination of the following characters:

1. On dorsal forewing, male brand present as a prominent bar along the cubitus, whereas it is not visible to naked eye in *Y. persimilis* ELWES & EDWARDS.
2. Dorsal lobe of valva is more protruding than that of *Y. persimilis* ELWES & EDWARDS.
3. Lamina of androconia is nearly twice the length of that of *Y. persimilis* ELWES & EDWARDS.
4. Androconia are brownish, whereas they are very dark and blackish in *Y. persimilis* ELWES & EDWARDS.

Notes: Though shape of ♂ brand on dorsal forewing of *Y. d. cenwanga* **subspec. nov.** is quite different from that of *Y. dohertyi* (MOORE), no extraordinary differences of ♂ genitalia and androconia can be found between *Y. d. cenwanga* **subspec. nov.** and *Y. dohertyi* (MOORE). Therefore, the present author considers *Y. d. cenwanga* **subspec. nov.** as a subspecies of *Y. dohertyi* (MOORE). It is also possible that *Y. d. cenwanga* **subspec. nov.** is a replacement species of *Y. dohertyi* (MOORE) in W. Guangxi.

Distribution: China (W. Guangxi).

Acknowledgements: I express my sincere thanks to Dr. YOSHINOBU UÉMURA (Tsukuba), Dr. NORIO NAKAMURA (Yokohama) and Dr. ALEXANDER L. MONASTYRSKII (Hanoi, Vietnam) for providing me a lot of useful literatures. This study is partly supported by the Excellent Youth Training Project of Chongqing Municipal Culture Commission, the 3rd batch (No. 2016QNWHYC30).

References

- AOKI, T. & Y. UÉMURA (1984): Studies on the genus *Ypthima* (Lepidoptera: Satyridae) in Thailand. - *Tokurana* **6-7**: 71-103, Mishima.
- ELIOT, J. N. (1967): The *Sakra* MOORE, 1857, Section of the Satyrid Genus *Ypthima* HÜBNER. - *Entomologist* **100** (2): 48-61, London.
- KIMURA, Y., AOKI, T., YAMAGUCHI, S., UÉMURA, Y. & T. SAITO (2016): The butterflies of Thailand based on YUNOSUKE KIMURA Collection **3**, Nymphalidae. - *Mokuyosha*, Tokyo.
- MONASTYRSKII, A. L. (2005): Butterflies of Vietnam **1**, Nymphalidae: Satyrinae. - *Galaxy Studio*, Hanoi.
- MOORE, F. (1893-1896): *Lepidoptera Indica* **2**. - Lovell Reeve & Co., Ltd., London.

- NAKAMURA, N. & H. WAKAHARA (2012): A revised checklist of the butterflies of the Lao P. D. R. (Insecta: Lepidoptera). - *Evolutionary Sciences* **17**: 19-85, Tokyo.
- SHIRÔZU, T. & H. SHIMA (1979): On the natural groups and their phylogenetic relationships of the genus *Ypthima* HÜBNER mainly from Asia (Lepidoptera: Satyridae). - *Sieboldia* **4**: 231-295, Fukuoka.
- SHIZUYA, H., WATANABE, Y., SAITO, M. & T. SOE (2005): Basic information on butterflies of Kachin state, Myanmar (PART 3). - *Butterflies* **40**: 38-46, Tokyo.
- UÊMURA, Y. (1986): Identification guide to the species of the genus *Ypthima* (Lepidoptera: Satyridae) from Thailand and Nepal. - *Yadoriga* **127**: 26-33, Tokyo.
- UÊMURA, Y. (2005): A synonymic list and distribution map portion of "An illustrated checklist of the butterflies of Laos P.D.R." - *Bulletin of the Toyosato Museum of Entomology* **14**: 1-8, Tsukuba.
- UÊMURA, Y. & A. L. MONASTYRSKII (2004): A revisional catalogue of the genus *Ypthima* HÜBNER (Lepidoptera: Satyridae) from Vietnam. - *Bulletin of the Kitakyushu Museum of Natural History and Human History Series A Natural History* **2**: 17-45, Kitakyushu.

Address of the author

Dr. SONG-YUN LANG

Chongqing Museum of Natural History, Jinhua-Lu No. 398, Beibei, 400700, Chongqing, China

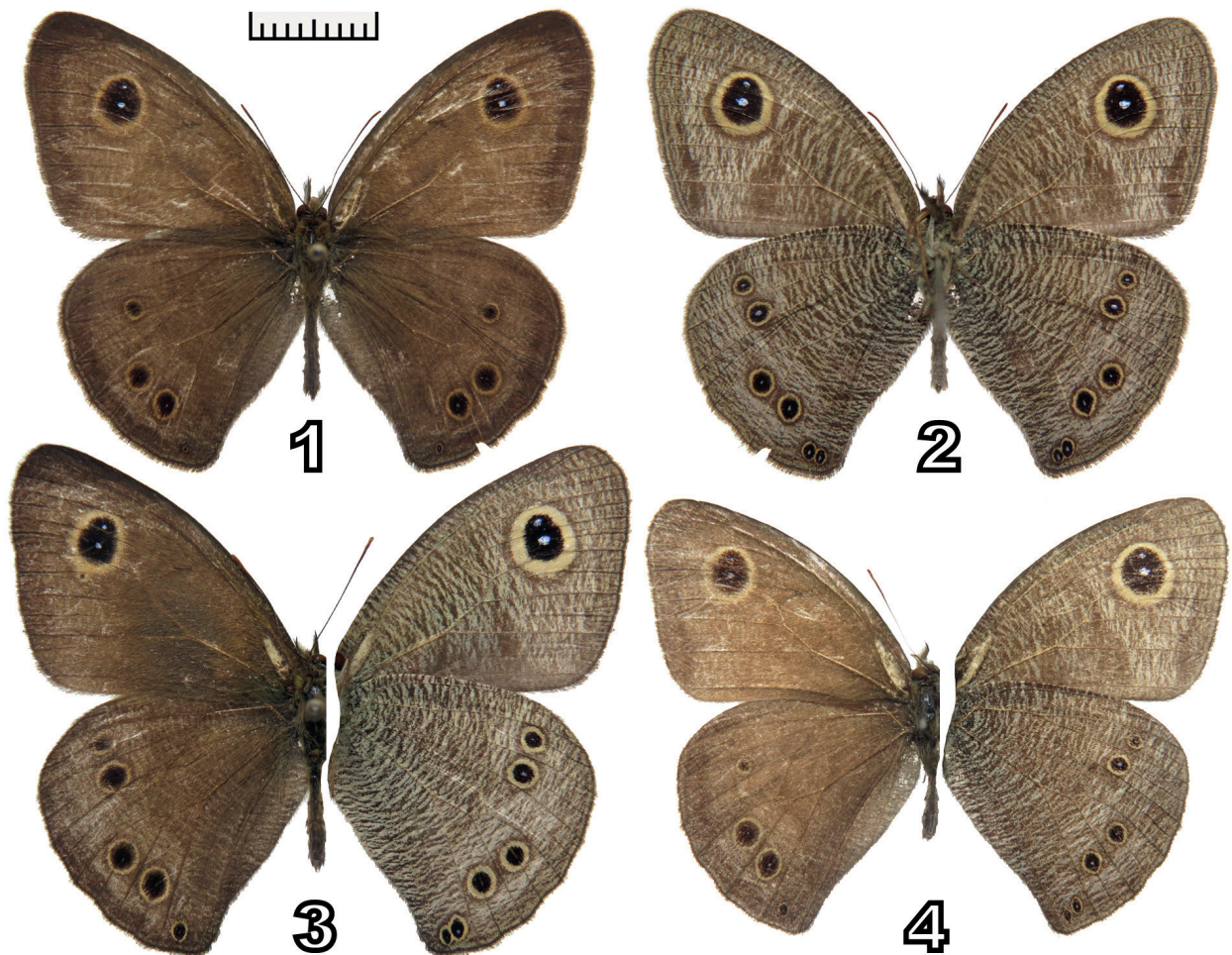


Fig. 1, 2: *Ypthima dohertyi cenwanga* **subspec. nov.**, HT ♂, CHINA: Guangxi, Mt. Cenwang Laoshan, SATY0619, ANDR0091, CMNH.

Fig. 3: *Ypthima dohertyi dohertyi* (MOORE, [1893]), ♂, CHINA: Yunnan, Pu'er, SATY0618, ANDR0090, LSY.

Fig. 4: *Ypthima evansi* ELIOT, 1967, ♂, CHINA: Guangxi, Mt. Cenwang Laoshan, SATY0633, ANDR0114, LSY.

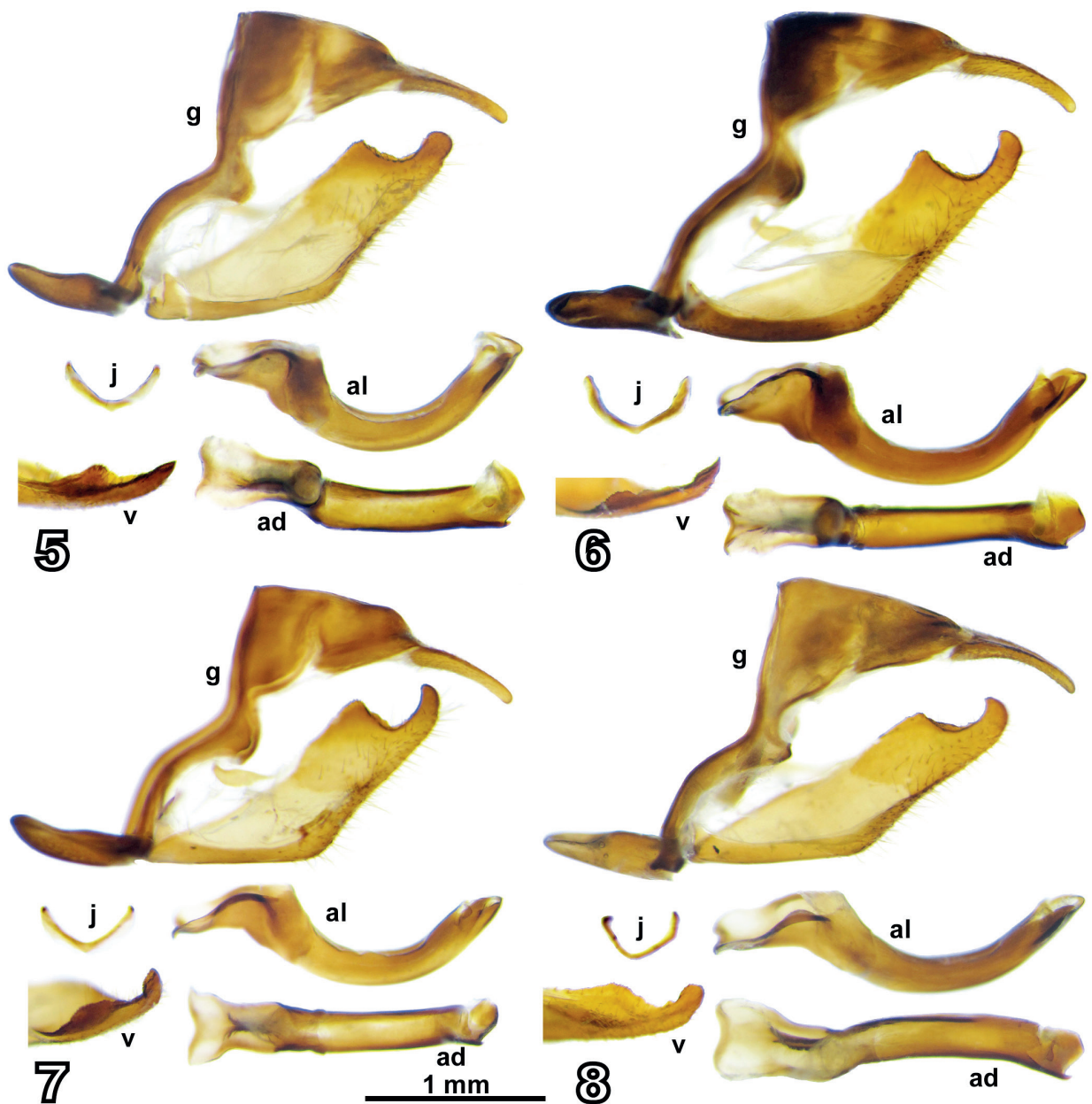


Fig. 5-8: ♂ genitalia: (g) ♂ genitalia in lateral view with left valva and aedeagus removed, (al) aedeagus in lateral view, (ad) aedeagus in dorsal view, (v) tip of valva in dorsal view, (j) juxta.

Fig. 5: *Ypthima dohertyi cenwanga* **subspec. nov.**, HT ♂, CHINA: Guangxi, Mt. Cenwang Laoshan, SATY0619, ANDR0091, CMNH.

Fig. 6: *Ypthima dohertyi dohertyi* (MOORE, [1893]), CHINA: Yunnan, Pu'er, SATY0618, ANDR0090, LSY.

Fig. 7: *Ypthima evansi* ELIOT, 1967, CHINA: Guangxi, Mt. Cenwang Laoshan, SATY0633, ANDR0114, LSY.

Fig. 8: *Ypthima persimilis* ELWES & EDWARDS, 1893, CHINA: Yunnan, Menghai, SATY0620, ANDR0092, LSY.

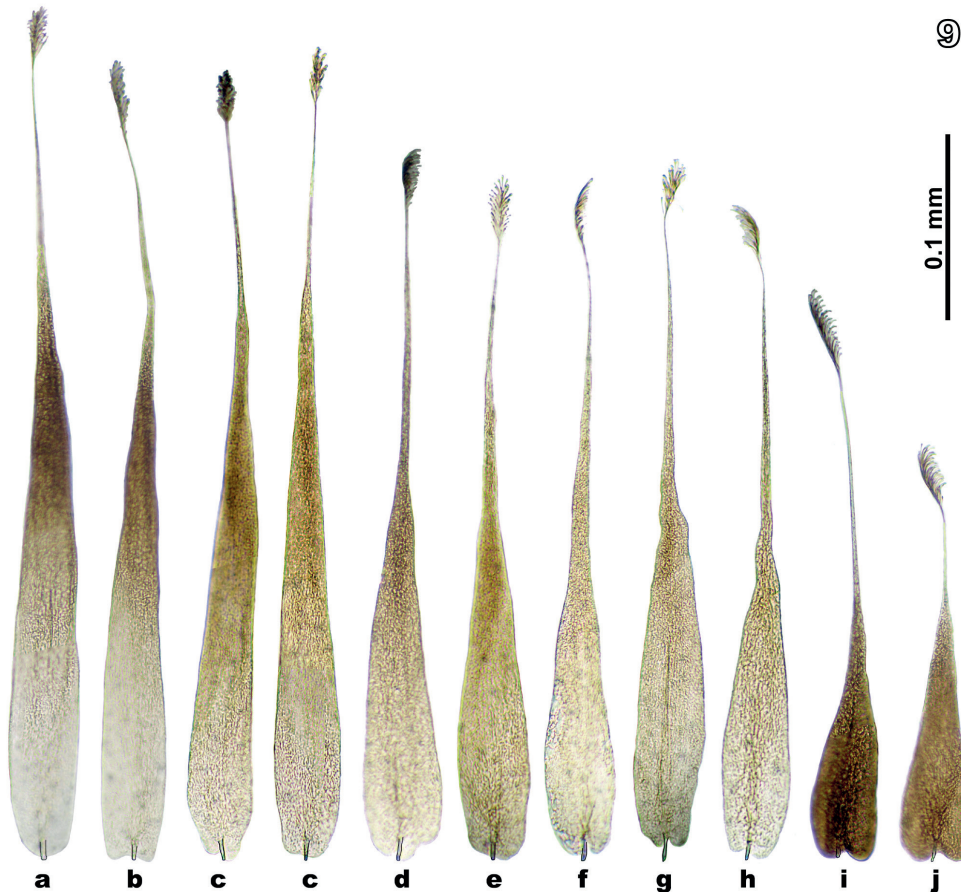


Fig. 9: Androconia: (a) *Ypthima dohertyi dohertyi* (MOORE, [1893]), CHINA: Yunnan, Pu'er, SATY0618, ANDR0090, LSY, (b) *Ypthima dohertyi dohertyi* (MOORE, [1893]), CHINA: Yunnan, Pu'er, ANDR0100, LSY, (c) *Ypthima dohertyi cenhanga* subsp. nov., HT ♂, CHINA: Guangxi, Mt. Cenwang Laoshan, SATY0619, ANDR0091, CMNH, (d) *Ypthima evansi* ELIOT, 1967, CHINA: Yunnan, Menghai, SATY0617, ANDR0089, LSY, (e) *Ypthima evansi* ELIOT, 1967, CHINA: Guangxi, Mt. Cenwang Laoshan, SATY0624, ANDR0103, LSY, (f) *Ypthima evansi* ELIOT, 1967, CHINA: Guangxi, Mt. Cenwang Laoshan, SATY0632, ANDR0113, LSY, (g) *Ypthima evansi* ELIOT, 1967, CHINA: Guangxi, Mt. Cenwang Laoshan, SATY0633, ANDR0114, LSY, (h) *Ypthima evansi* ELIOT, 1967, CHINA: Guangxi, Mt. Cenwang Laoshan, SATY0634, ANDR0115, LSY, (i) *Ypthima persimilis* ELWES & EDWARDS, 1893, CHINA: Yunnan, Menghai, SATY0620, ANDR0092, LSY, (j) *Ypthima sakra nujiangensis* HUANG, 2001, CHINA: Yunnan, Gongshan, ANDR0094, LSY.

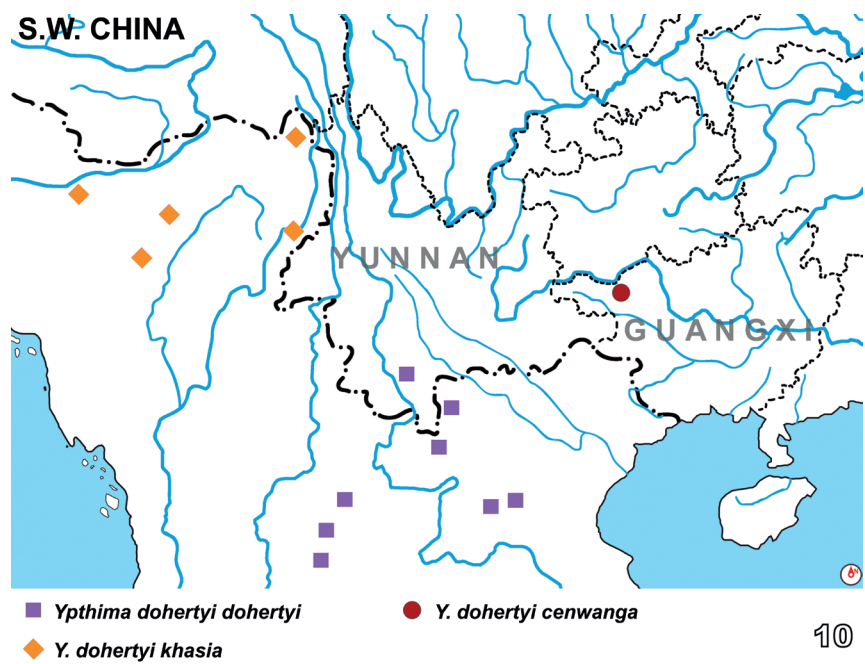


Fig. 10: Distribution of *Ypthima dohertyi* (MOORE, [1893]) in China and its surrounding (Sources of data: ELIOT, 1967; UEMURA, 2005; SHIZUYA et al., 2005; KIMURA et al., 2016; specimens kept in CMNH and LSY).

ZOBODAT - www.zobodat.at

Zoologisch-Botanische Datenbank/Zoological-Botanical Database

Digitale Literatur/Digital Literature

Zeitschrift/Journal: [Atalanta](#)

Jahr/Year: 2018

Band/Volume: [49](#)

Autor(en)/Author(s): Lang Song-Yun

Artikel/Article: [Description of a new subspecies of *Ypthima dohertyi* \(Moore, \[1893\]\) from Guangxi, S.W. China \(Lepidoptera, Nymphalidae & Satyrinae\) 131-134](#)