

BRAUERIA (Lunz am See, Austria) 27:15-16 (2000)

**A new species of *Athripsodes* (Trichoptera: Leptoceridae) from central-southern Italy**

Fernanda CIANFICCONI & Piero SALERNO

**Abstract** – Male and female of *Athripsodes morettii* sp.n. from central-southern Italy are described and illustrated.

Subsequent to MALICKY'S (1999) revision of the *Athripsodes bilineatus* group from the Aegean area, some male and female specimens, previously attributed to *A. bilineatus* from central-southern Italian streams, were re-examined. They did not belong to any species or subspecies of this group. Malicky (specialist of European and Asian Trichoptera) and Morse (specialist of Leptoceridae) confirmed that they constitute a species new to science.

*Athripsodes morettii* sp. n.

Forewing length: 8.5 (♂) - 7 (♀) mm. Body black, antennae brown with white ring in the basal portion, legs brownish, forewings with dark brown pubescence and each with two transverse white lines and white spots (Fig. 1).

**Genitalia ♂** - Preanal appendages elliptical. Tenth tergum elongated, basal part broad with rounded ventral-caudal lobe, distal part slender and pointed (Figs. 2, 3). Inferior appendages each with broad coxopodite, its wide posterior flange hiding spinose mesal ridge, harpago nearly parallel-sided (Fig. 4). Phallus with lightly sclerotized phallicata curved downwards. Parameres membranous and extensible, with two overlapping pairs of long, strong spines arising about the same distance from base of phallus (Figs. 5, 6).

**Genitalia ♀** - Broad ventral gonopod plates, straight lateral lobe with longitudinal striae, rounded posterior margin. Lamellae with apex slightly sinuous in lateral view (Fig. 7), slightly pointed apico-dorsally (Fig. 8). Base of spermathecal sclerite triangular (Fig. 9).

**Remarks** – According to Morse who is preparing a revision of world *Athripsodes*, the new species is close to *A. bilineatus* (LINNAEUS, 1758) and *A. fulvoguttatus* MOSELY, 1935. Inferior appendages of *A. morettii* are broader than those of the other two species. In *A. bilineatus* each harpago is enlarged and more like a dome apically. The dorsal pair of paramere spines in *A. bilineatus* arises closer to the base of the phallus than the ventral pair and in *A. fulvoguttatus*, they are short and curved 90 degrees dorsad. In the female of *A. morettii* the ventral gonopod plates are broader laterally than in *A. bilineatus* and form wider borders on the deep, smooth pockets of pleura IX. The female of *A. fulvoguttatus* is unknown.

The aquatic instars of this insect prefer meta-iphithral zones, as has been observed for *A. bilineatus* in Germany (EHLERT et al., 1999). In summer (June-August) the adults fly above pools or slow flowing sections of streams, are day-active, especially in the afternoon sunlight and, at night, are attracted by light traps.

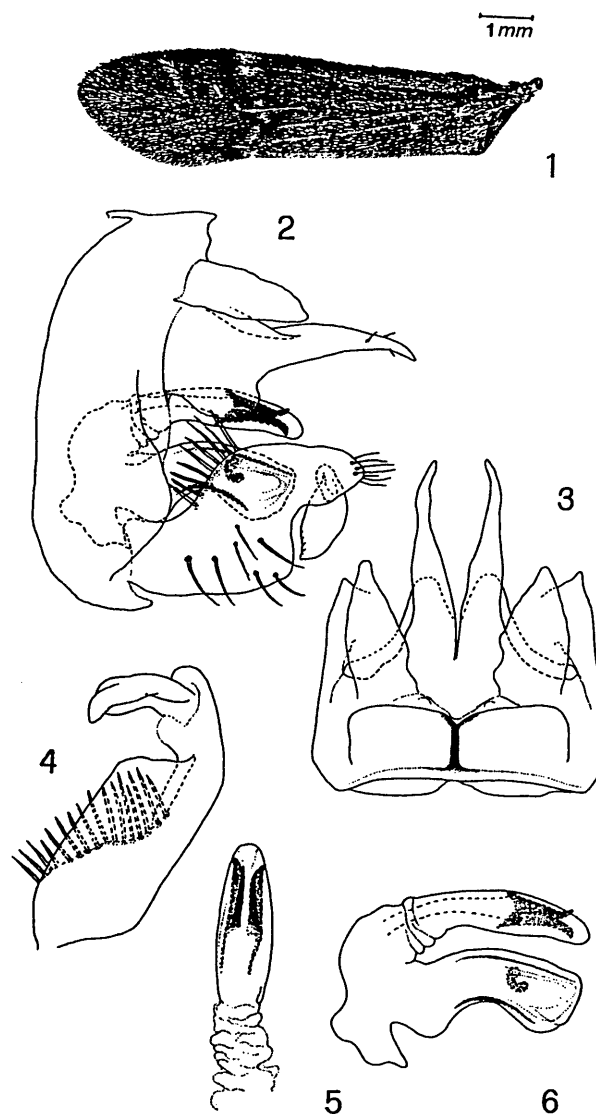
**Specimens examined:** Holotype ♂, allotype ♀: Marche, Certano stream, Pianello, PS, 370 m a.s.l., 29.VI.1994, leg. Salerno. Paratypes: Toscana: Afra stream, Colle S. Lucia, AR, 490 m, 22.VI.1979: 1 ♂, 1 ♀, leg. Moretti, Cianficconi, Marinelli; Tevere river, Pieve S. Stefano, AR, 430 m, 25.VI.1982: 1 ♀ (light traps); 26.VII.1982: 1 ♂, 1 ♀, leg. Cianficconi, Corallini, Chiappafreddo. Umbria: Nestore river, Piegara, PG, 230 m, 29.V.1977: 9 ♂, 7 ♀, leg. Truffini; 28.V.1997: 1 ♀, leg. Todini; Sentino stream, Ponte Calcara, PG, 560 m, 6.V.1972: 1 ♀, leg. Lo Gatto; Chiascio river, Corraduccio, PG, 370 m, 16.VII.1991: 6 ♂, 1 ♀, leg. Salerno; Rasina stream, Gualdo Tadino, PG, 350 m, 19.VII.1991: 2 ♂, 8 ♀, 3 ♂ x 3 ♀, leg. Salerno; 10.VI.1993: 12 ♂, 3 ♀ (light traps), leg. Mazzerioli, Salerno; Scirca stream, Cantalupo, PG, 480 m, 14.VII.1992: 2 ♀, leg. Romano; Fosso Doria, Sigillo, PG, 400 m, 13.VII.1992: 1 ♂, 2 ♀, leg. Romano; Puglia stream, Barattano, PG, 400 m, 7.VIII.1998: 7 ♀, leg. Liberati. Marche: Potenza stream, Castelraimondo, 300 m, MC, 27.VII.1955: 4 ♂, 2 ♀, leg. Moretti; Rio Puto, P.te degli Alberi, PS, 90 m, 20.VIII.1964: 1 ♂, leg. Ercoli;

Burano stream, Pontedazzo, PS, 350 m, 17.VII.1994: 4 ♂, 1 ♀ (light traps), leg. Salerno; Cesano stream, S. Lorenzo in Campo, AN, 200 m, 26.VIII.1994: 1 ♂, 3 ♀ (light traps), leg. Salerno; Esinante stream, AN, 140 m, 31.VII.1996: 1 pupa ♂, leg. Cantatori. Abruzzo: Vomano stream, Villa Vomano, TE, 100 m, 22.IX.1984: 1 ♂, leg. Di Domenico. Molise: Tona stream, Rotello, CB, 340 m, 21.V.1968: 1 ♂, 1 ♀, leg. Pangia; Cigno stream, Bonegro, CB, 700 m, 7.VI.1975: 1 ♀, leg. Mastrogioseppe; Tappino stream, CB, 400 m, 11.IX.1979: 1 ♀, leg. Cutrone. Puglia: Cervaro stream, B. Macchione, FG, 400 m, 10.VI.1983: 2 ♂, 30.V.1983: 1 ♀, leg. Ricucci; Celone stream, Borgo S. Giorgio, FG, 154 m, 3.VI.1986: 1 ♂, leg. Papagno. Calabria: Novito river, Agnana, RC, 200 m, 13.IX.1983: 2 ♂, 2 ♀, leg. Cianficconi, Chiappafreddo, Tucciarelli; Colognati stream, S. Onofrio, CS, 400 m, 9.VII.1985: 2 ♂; 8.VI.1989: 3 ♂; 9.VII.1989: 15 ♂, 4 ♀, leg. Pignatari.

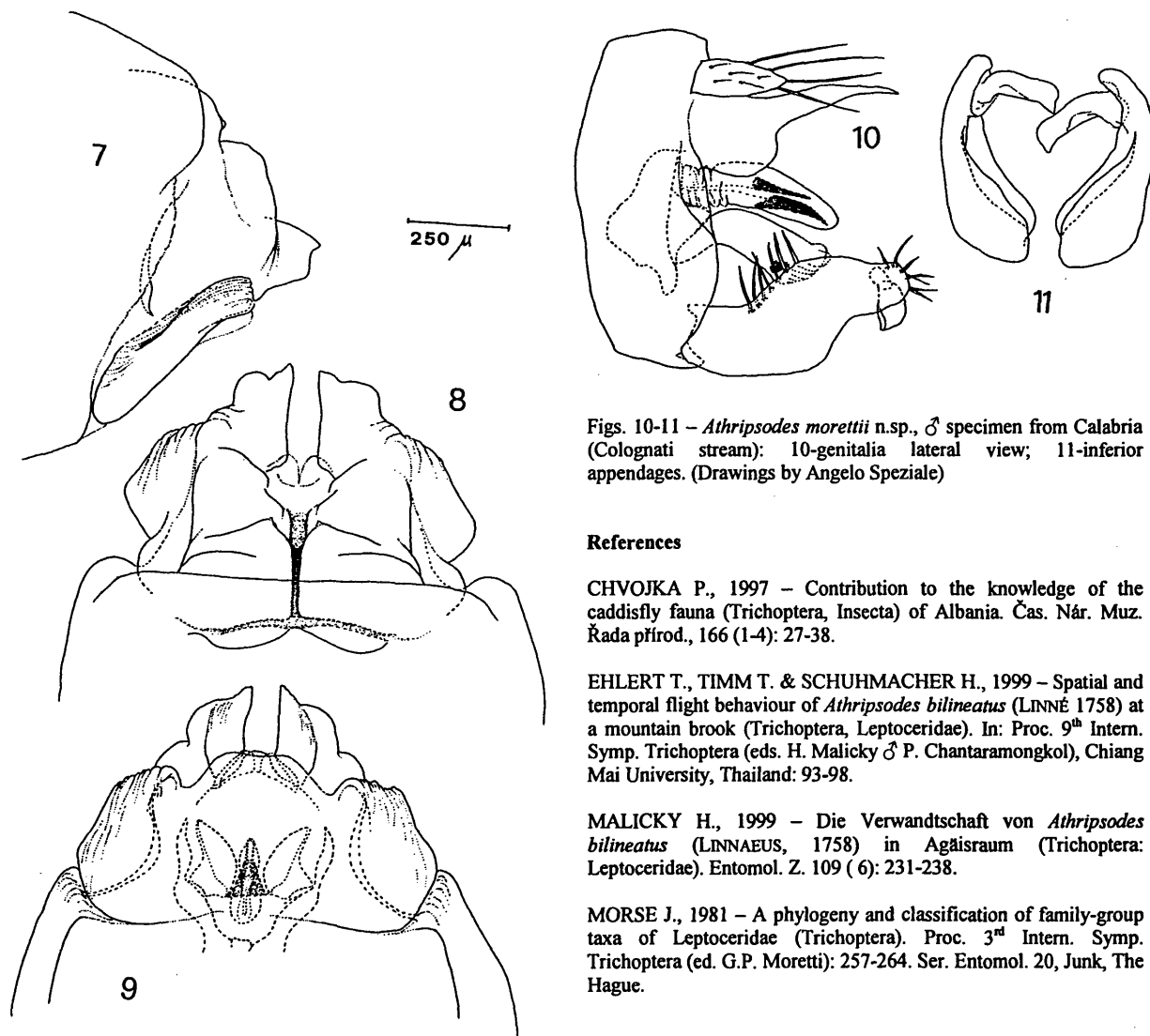
The taxonomical differences seen in the Calabrian ♂ are now considered variations within the species (Figs. 10, 11). The study of other specimens may justify the designation of a subspecies.

All the specimens mentioned above are in the Moretti collection at the Dipartimento di Biologia Animale ed Ecologia dell'Università di Perugia.

**Derivatio nominis** -This species is named after our unforgettable Maestro Prof. Giampaolo Moretti, who transmitted his passion for Trichoptera to us.



Figs. 1-6- *Athripsodes morettii* sp.n. holotype: 1-forewing; male genitalia: 2-lateral view; 3-dorsal view; 4-inferior appendage, ventrocaudal view; 5-paramere, dorsal view; 6-phallus lateral view.



Figs. 7-9 *Athripsodes morettii* sp.n., female genitalia: 7-lateral view; 8-dorsal view; 9-ventral view.

Figs. 10-11 – *Athripsodes morettii* n.sp., ♂ specimen from Calabria (Colognati stream): 10-genitalia lateral view; 11-inferior appendages. (Drawings by Angelo Speziale)

**References**

CHVOJKA P., 1997 – Contribution to the knowledge of the caddisfly fauna (Trichoptera, Insecta) of Albania. Čas. Nár. Muz. Rada pfirod., 166 (1-4): 27-38.

EHLERT T., TIMM T. & SCHUHMACHER H., 1999 – Spatial and temporal flight behaviour of *Athripsodes bilineatus* (LINNÉ 1758) at a mountain brook (Trichoptera, Leptoceridae). In: Proc. 9<sup>th</sup> Intern. Symp. Trichoptera (eds. H. Malicky & P. Chantaramongkol), Chiang Mai University, Thailand: 93-98.

MALICKY H., 1999 – Die Verwandtschaft von *Athripsodes bilineatus* (LINNAEUS, 1758) in Agäisraum (Trichoptera: Leptoceridae). Entomol. Z. 109 (6): 231-238.

MORSE J., 1981 – A phylogeny and classification of family-group taxa of Leptoceridae (Trichoptera). Proc. 3<sup>rd</sup> Intern. Symp. Trichoptera (ed. G.P. Moretti): 257-264. Ser. Entomol. 20, Junk, The Hague.

Address of the authors: Dipartimento di Biologia Animale ed Ecologia, Università di Perugia, Via Elce di Sotto, 06123 Perugia, Italy.

**Acknowledgements**

We would like to express our gratitude to Professors Hans Malicky and John Morse for helpful advice. We also thank Angelo Speziale for the drawings.



# ZOBODAT - [www.zobodat.at](http://www.zobodat.at)

Zoologisch-Botanische Datenbank/Zoological-Botanical Database

Digitale Literatur/Digital Literature

Zeitschrift/Journal: [Braueria](#)

Jahr/Year: 2000

Band/Volume: [27](#)

Autor(en)/Author(s): Cianficconi Fernanda, Salerno

Artikel/Article: [A new species of Athripsodes \(Trichoptera: Leptoceridae\) from central-southern Italy 15-16](#)