

BRAUERIA (Lunz am See, Austria) 35:4 (2008)

**Description of *Helicopsyche mjoebergi* sp.n. from Borneo (Trichoptera, Helicopsychidae)**

Kjell Arne JOHANSON & János OLÁH

**Abstract.** A new species, *Helicopsyche mjoebergi* (Helicopsychidae), is described and illustrated.

**Key words:** Helicopsychidae, *Helicopsyche mjoebergi*, new species, Borneo.

***Helicopsyche mjoebergi*, new species**

Figs. 1-6

*Helicopsyche mjoebergi* is unique among the Oriental *Helicopsyche* in the presence of 3 pairs of long megasetae on segment X. The gonopods are divided into a large dorsal branch and a posterad pointing ventral branch, resembling the gonopods in the species earlier described into the genus *Cochliophylax*, and from which *H. mjoebergi* is easily separated by having 2-segmented maxillary palps.

**Male head:** Cephalic warts large, oval; postantennal warts absent; interantennal warts spherical. Antennal scapes each slightly longer than half eye diameter, with wide, anterior swelling at distal two-thirds; each flagellum with 27 flagellomeres with dark band encircling basal part. Maxillary palps 2-segmented, distal segment slightly shorter than proximal segment and scape.

**Male wings.** Forewing golden brownish, length 4.0 mm, hind wing length 3.2 mm.

**Male abdomen and genitalia (Figs. 1-6).** Abdominal sternum VI with long, pointed ventral process without setae (Fig. 1). Segment IX with wide, obliquely ellipsoid anterior lobes in lateral view (Fig. 2); anterior apices rounded, pointing anterodorsad; sternum rectangular in lateral view, about as long as largest width of gonopods (Fig. 2). Segment IX long in dorsal view, with nearly parallel-sided lateral margins; mesal cleft deep, posteriorly rounded (Fig. 3). Segment IX with short, narrowing central lobe at posterior margin in ventral view; lateral margins diverging posterad; anterior mesal cleft deep and wide, nearly trapezoid (Fig. 4). Lateral apodemes on segment IX not seen. Tergum X slender along its length in lateral view (Fig. 2), about as long as height of segment IX; weakly curving ventrad; with 3 pairs equally long megasetae along dorsolateral margins (Figs. 2, 3); posterior pair originating shortly after midlength of segment, directed posterad along segment; apex reaching apex of tergum X; both anterior pairs of megasetae situated closely to each other, originating from base of tergum X, weakly curving dorsad; apices reaching and exceeding basis of posterior megasetae (Fig. 2). Dorsal surface of tergum X with 2 pairs slender, posterad orienting, narrowing processes (Figs. 2, 3). Superior appendages parallel-sided in lateral view (Fig. 2) and tapering in dorsal view (Fig. 3), located immediately above midheight of segment (Fig. 2). Gonopods divided into long, dorsad orienting dorsal branch and long, posterad orienting ventral branch (Fig. 2). Dorsal branches basally narrow, unevenly widening dorsad, producing posterad into tapering apex (Fig. 2). Ventral branches narrow in lateral view, slightly curving dorsad at apices; widely triangular in ventral view, with slightly diverging apices (Fig. 4). Basal plate wide, dorsally irregular in lateral view (Fig. 2); apex exceeding anterior margin of segment IX, slightly curving dorsad; in ventral view strongly narrowing from mid-

length into anteriorly pointing apodeme (Fig. 4). Phallus long, slender in lateral view (Fig. 5), widening strongly at mid-length in ventral view (Fig. 6); without processes; endotheca long, parallel-sided in lateral view. Sperm channel widens immediately anteriorly of phallic sclerite.

**Holotype male:** MALAYSIA: O. Borneo, Songei Boh. [Mjöberg] [no date given, but probably 1925-1926](NHRS, alcohol).

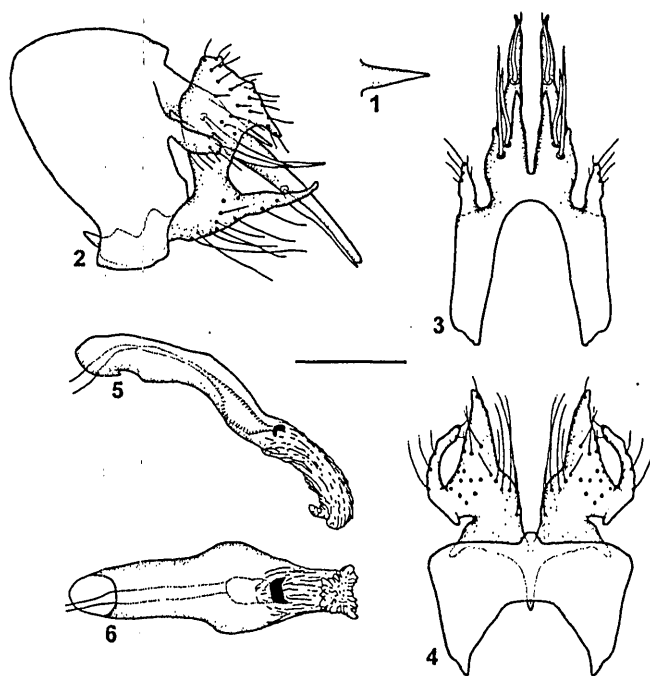
**Distribution.** Borneo.

**Etymology.** *mjoebergi*, named after the collector of the species, Eric Georg Mjöberg (1882-1938), assistant in the Entomological Department, Swedish Museum of Natural History of National Museum between 1914-17, head of the Zoological Department of Deli Experimental Station, Sumatra in 1919-21, Director of the Sarawak Museum in 1922-24, and finally organizer of a scientific expedition to Borneo in 1925-26.

**Address of authors:**

Kjell Arne Johanson: Swedish Museum of Natural History, Entomology Department, Box 50007, SE-104 05 Stockholm, Sweden. Email: [kjell.arne.johanson@nrm.se](mailto:kjell.arne.johanson@nrm.se)

János Oláh: I. kk. 10, H-5540 Szarvas, Hungary. Email: [saker@szarvasnet.hu](mailto:saker@szarvasnet.hu)



Figs. 1-6. *Helicopsyche mjoebergi* sp.n., male holotype: 1 — ventral process on abdominal sternite VI; 2 — genitalia, lateral view; 3 — genitalia, dorsal view; 4 — genitalia, ventral view; 5 — phallus, lateral view; 6 — phallus, ventral view. Scale bar refers to all illustrations.

# ZOBODAT - [www.zobodat.at](http://www.zobodat.at)

Zoologisch-Botanische Datenbank/Zoological-Botanical Database

Digitale Literatur/Digital Literature

Zeitschrift/Journal: [Braueria](#)

Jahr/Year: 2008

Band/Volume: [35](#)

Autor(en)/Author(s): Johanson Kjell Arne, Olah Janos

Artikel/Article: [Description of \*Helicopsyche mjoebergi\* sp.n. from Borneo \(Trichoptera, Helicopsychidae\) 4](#)