

## Sachtlebenia, a new glyptine ichneumonid

(Hymenoptera)

HENRY TOWNES

University of Michigan, Ann Arbor, Michigan, U. S. A.

(With 2 figures)

A peculiar ichneumonid of the subfamily Banchinae, tribe Glyptini, has been received from southeastern China. It represents an undescribed genus and species, with such remarkable characteristics that it seems worthy of special description. The new generic name is in honor of Prof. Dr. HANS SACHTLEBEN, in recognition of his long standing interest in the ichneumonids, and the great service rendered to this field of study by publication of his bibliography of the Palearctic ichneumonids.

### *Sachtlebenia*, new genus

Front wing 7.6 mm. long. General characteristics as illustrated in the accompanying figure. Features differentiating this genus from all the other Glyptini are the great distance between the attachments of the hind coxa and abdomen, reduction and retraction of the fifth and following abdominal segments, and short ovipositor. The fourth abdominal tergite in dorsal view has a narrow u-shaped median apical notch, and an apicolateral spine as indicated in the side view drawing. The presence of the areolet in the front wing and the peculiar modeling of the face and clypeus are reminiscent of the Ethiopian genus *Sjöstedtiella*, and this is the genus to which it seems most closely related.

Genotype: *Sachtlebenia sexmaculata*, new species.

### *Sachtlebenia sexmaculata*, new species

Male: Unknown.

Female type: Front wing 7.6 mm. long; face subpolished, with medium sized punctures that are in rows between moderately coarse transverse wrinkles, the wrinkles curved downward across the middle of the face so that they are arcuate; thorax polished, with moderately coarse punctures that are subadjacent on the mesoscutum, crowded into weak wrinkles on the propodeum, separated by about their diameter on the metapleurum, and absent from all but the upper 0.3 of the mesopleurum; abdomen polished, with coarse, very deep, adjacent punctures.

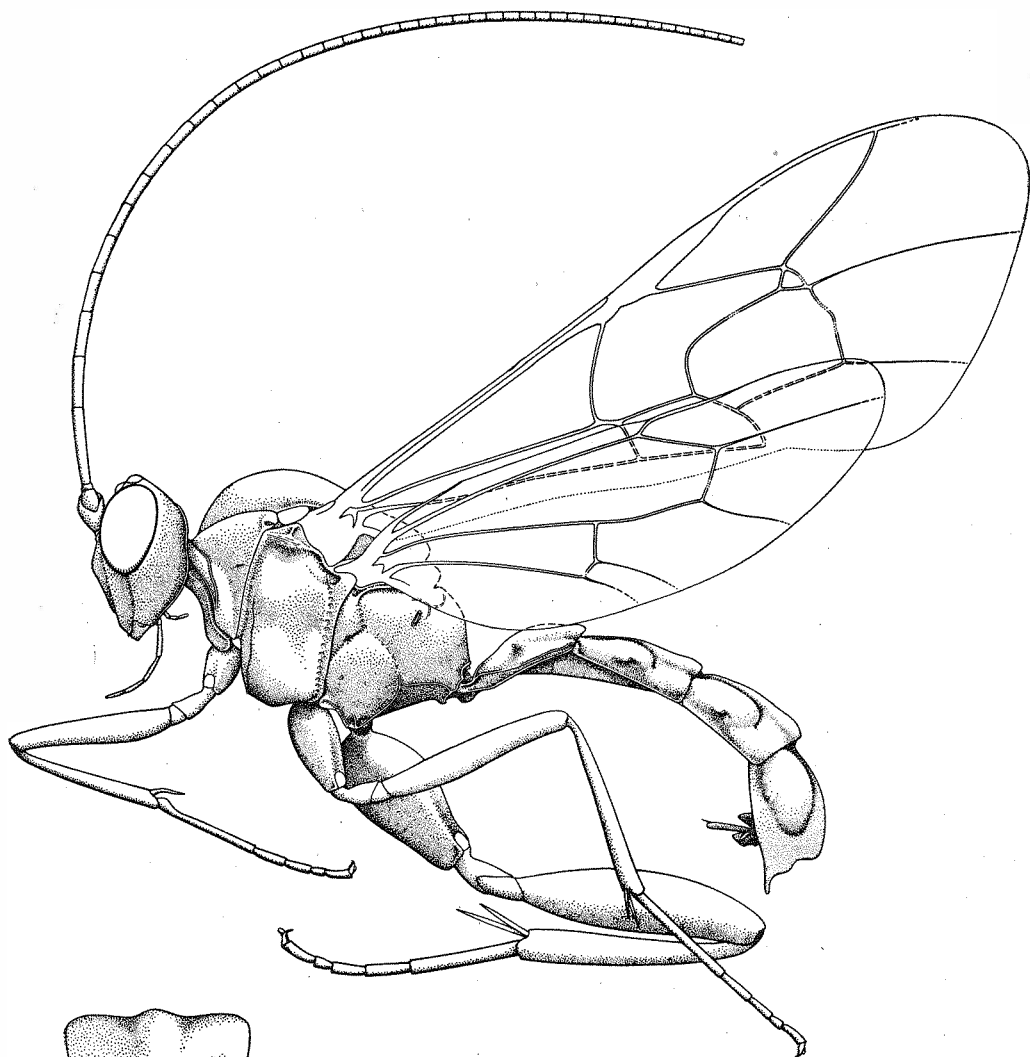


Figure 1. *Sachtlebenia sexmaculata*, type. Side view.  
Drawing by KAKUZO YAMAZAKI

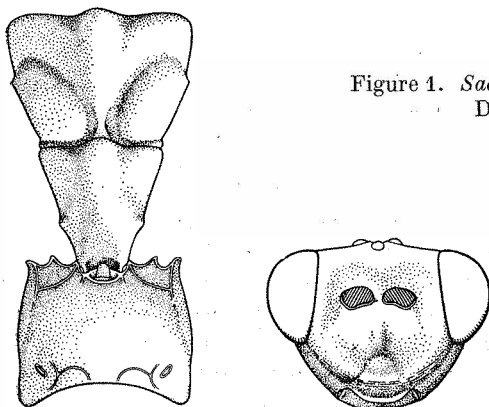


Figure 2. *Sachtlebenia sexmaculata*, type.  
Front view of head, and dorsal view of  
propodeum and first two segments of  
abdomen.

Drawing by KAKUZO YAMAZAKI

Yellow. Flagellum and front tarsus brown apically; middle tarsus brown; hind tarsus fuscous; hind first trochanter and basal and apical 0.12 of hind tibia brown; tergites 1—3 with a sublateral, broadly oval blackish spot near the midlength; tergite 4 with a very small, sublateral brownish spot near the midlength.

Type: ♀, Shaowu Hsien, Fukien Province, China, 1,200 to 1,500 meters, August 13 to 17, 1945, T. C. MAA (MAA Collection).

#### Summary

There is described a new genus and species of an ichneumonid of the subfamily Banchinae from southeastern China.

#### Zusammenfassung

Eine neue Gattung und Art der Familie Ichneumonidae, Unterfamilie Banchinae, aus Südost-China wird beschrieben.

#### Резюме

Описывается новый род и вид семейства Ichneumonidae подсемейства Banchinae из Юго-Восточного Китая.

# ZOBODAT - [www.zobodat.at](http://www.zobodat.at)

Zoologisch-Botanische Datenbank/Zoological-Botanical Database

Digitale Literatur/Digital Literature

Zeitschrift/Journal: [Beiträge zur Entomologie = Contributions to Entomology](#)

Jahr/Year: 1963

Band/Volume: [13](#)

Autor(en)/Author(s): Townes Henry Keith

Artikel/Article: [Sachtlebenia, a new glyptine ichneumonid \(Hymenoptera\). 523-525](#)