

Slezské muzeum  
Entomologické oddělení  
Opava (ČSSR)

JINDŘICH ROHÁČEK

## A monograph and re-classification of the previous genus *Limosina* MACQUART (Diptera, Sphaeroceridae) of Europe

With 1098 text figures

### Part III\*

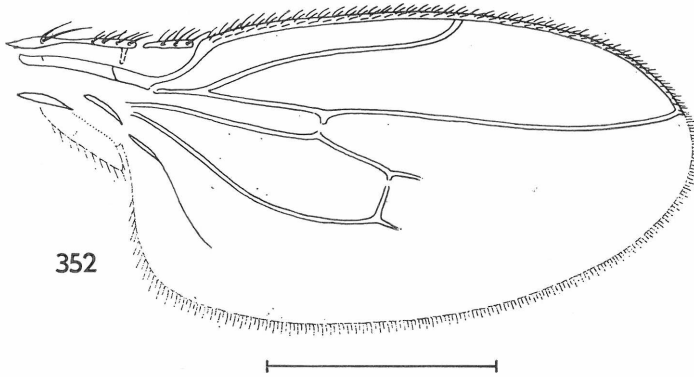


Fig. 352. *Parailimosina* (*P.*) *subcibrata* (ROHÁČEK) (♂, paratype), wing. Scale = 0.5 mm.

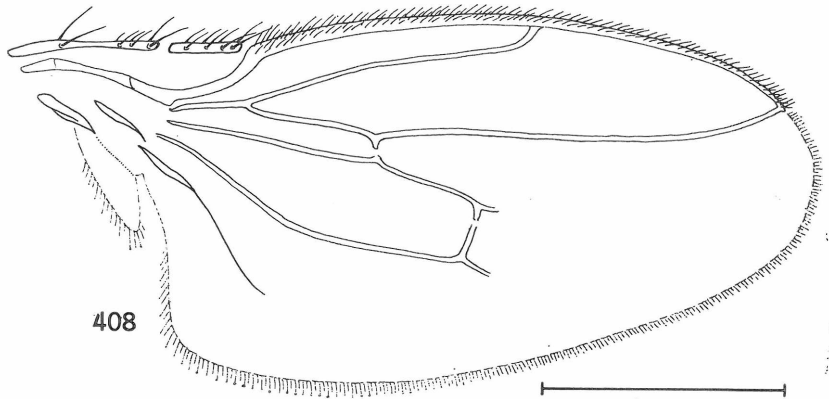
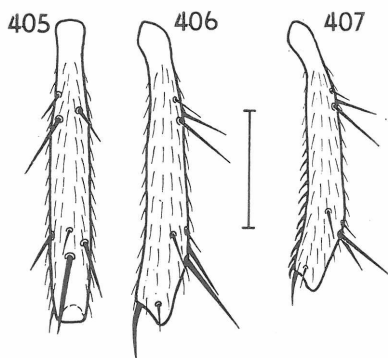
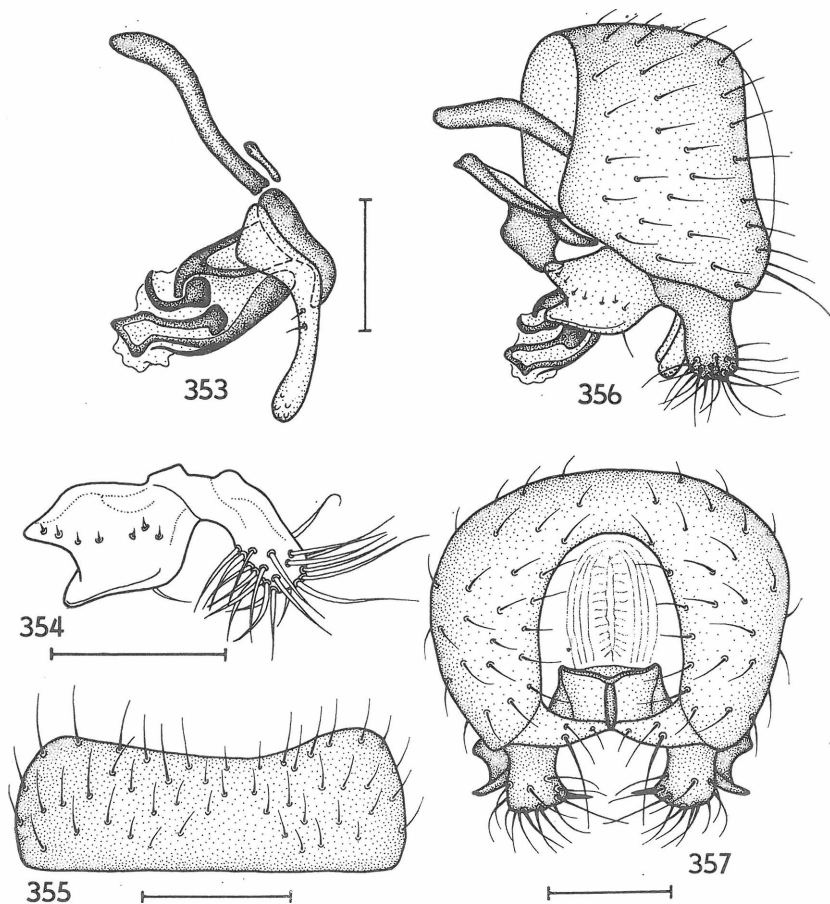


Fig. 408. *Parailimosina* (*C.*) *beckeri* (DUDA) (♀, Canary Is.), wing. Scale = 0.5 mm.

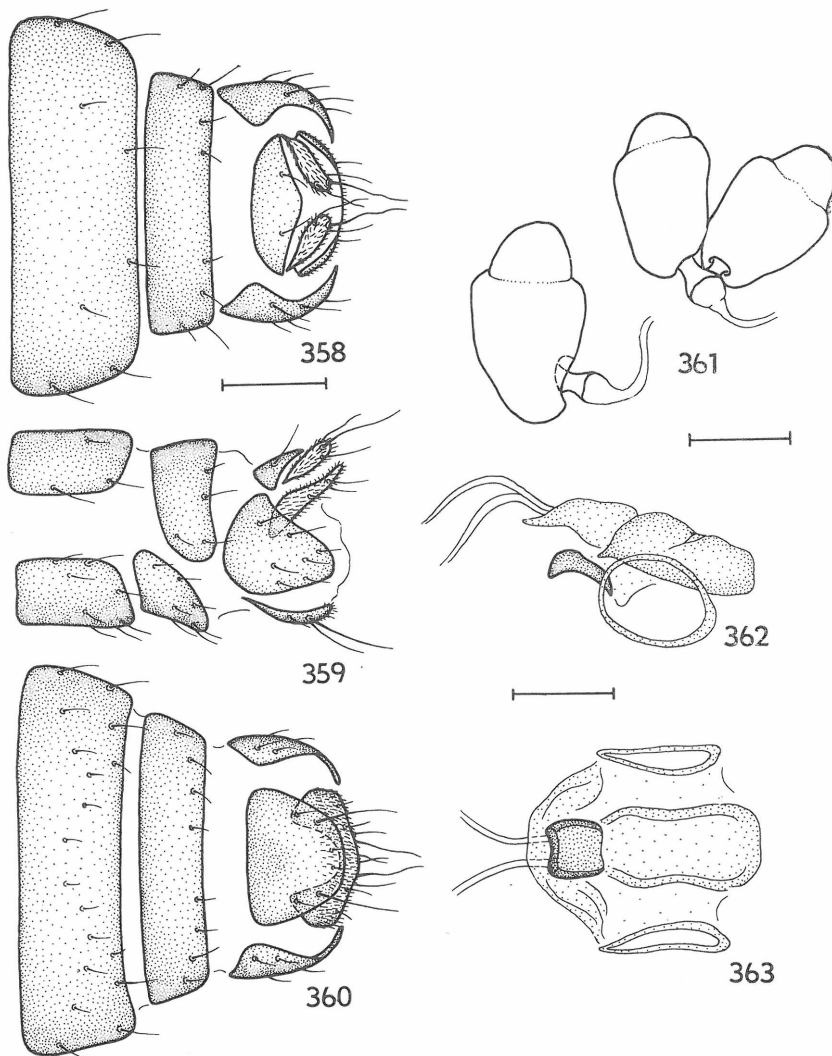
\* Part I in: Beitr. Ent. 32, p. 195–282; 1982.  
Part II in: Beitr. Ent. 33, p. 3–195; 1983.



Figs. 405–407. *Paralimosina (C.) beckeri* (DUDA) (Canary Is.). 405 – female  $t_2$  dorsally; 406 – ditto anteriorly; 407 – male  $t_2$  anteriorly. Scale = 0.2 mm.



Figs. 353–357. *Paralimosina (P.) subcristata* (ROHÁČEK). 353 – aedeagal complex laterally (only left postgonite figured); 354 – telomere (both based on ♂ paratype); 355 – male S5; 356 – male genitalia laterally; 357 – ditto caudally (aedeagal complex omitted) (all based on ♂ holotype). Scales: Fig. 355 = 0.2 mm, others = 0.1 mm.



Figs. 358—363. *Paralimosina (P.) subcristata* (ROHÁČEK) (♀, Czechoslovakia). 358 — postabdomen dorsally; 359 — ditto laterally; 360 — ditto ventrally; 361 — spermathecae; 362 — spectacles-shaped sclerite laterally; 363 — ditto ventrally. Scales: Figs. 358—360 = 0.1 mm, Figs. 361—363 = 0.05 mm.

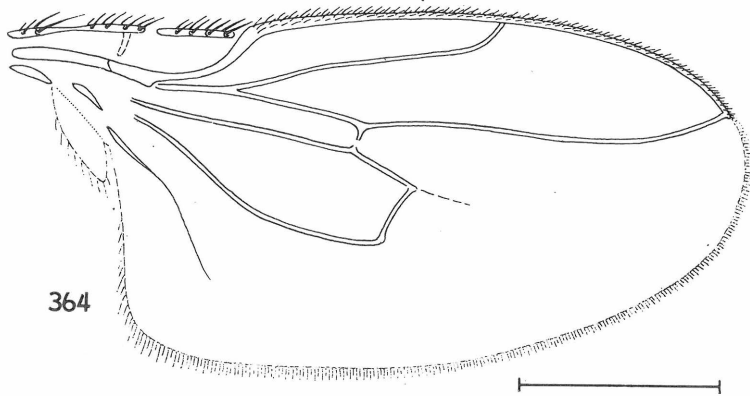
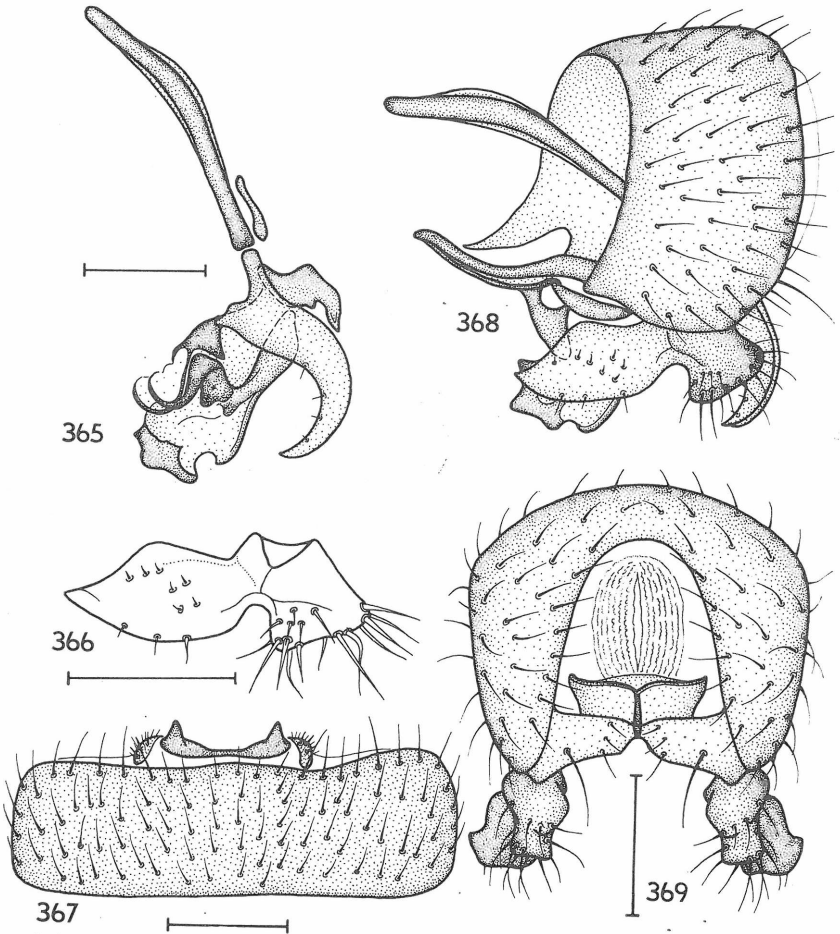
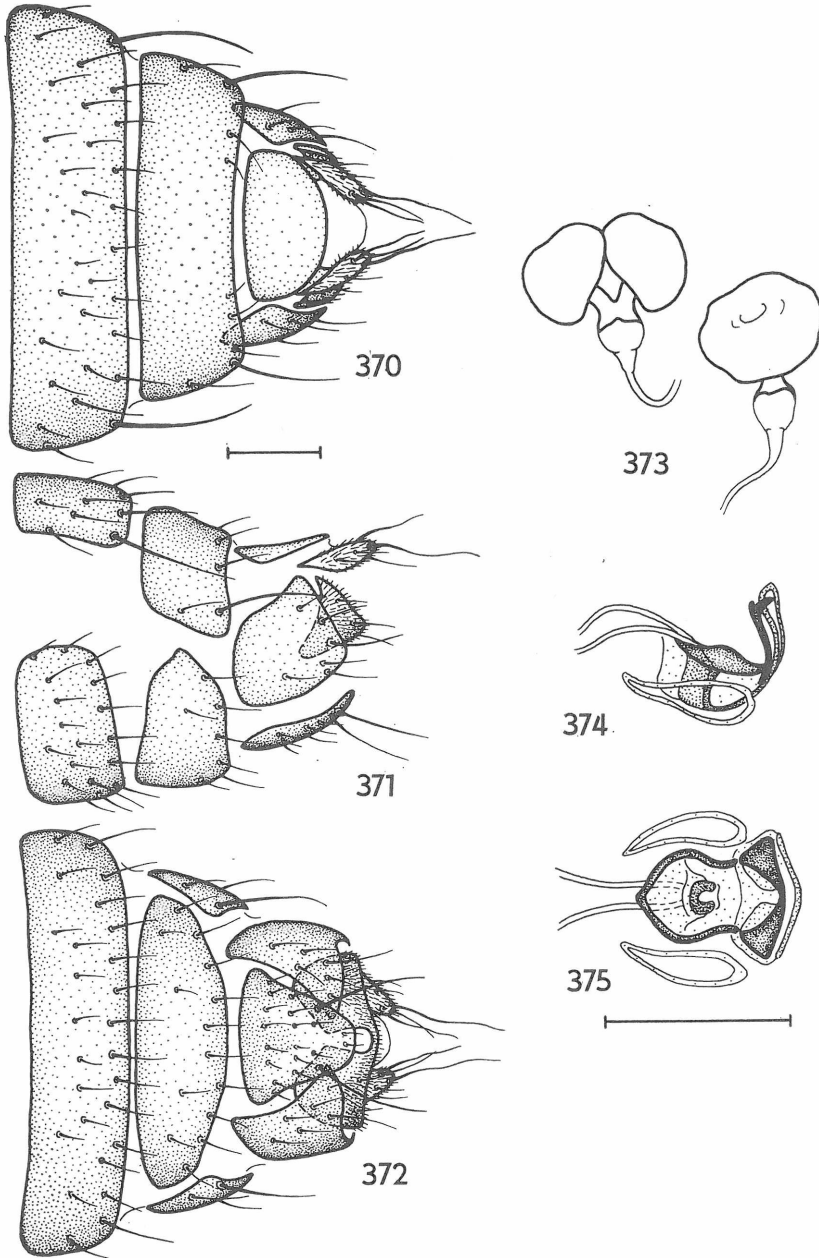


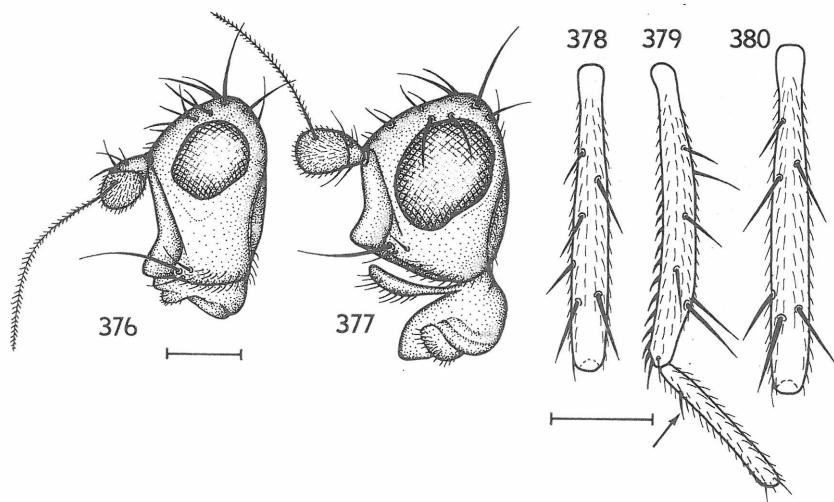
Fig. 364. *Paralimosina* (*P.*) *macedonica* (ROHÁČEK) (♂, paratype), wing. Scale = 0.5 mm.



Figs. 365–369. *Paralimosina* (*P.*) *macedonica* (ROHÁČEK). 365 – aedeagal complex laterally (only left postgonite figured); 366 – telomere (both based on ♂ holotype); 367 – male S5; 368 – male genitalia laterally; 369 – dtto caudally (aedeagal complex omitted) (all based on ♂ paratype). Scales: Fig. 367 = 0.2 mm, others = 0.1 mm.



Figs. 370–375. *Paralimosina* (*P.*) *macedonica* (ROHÁČEK) (♀, paratype). 370 – postabdomen dorsally; 371 – ditto laterally; 372 – ditto ventrally; 373 – spermathecae; 374 – spectacles-shaped sclerite laterally; 375 – ditto ventrally. Scales = 0.1 mm.



Figs. 376–380. *Paralimosina* species. Fig. 376. *P. (P.) kaszabi* PAPP, head laterally. Figs. 377–379. *P. (P.) trichopyga* (RICHARDS). 377 — head laterally; 378 — male  $t_2$  dorsally; 379 — male  $t_2$  and  $mt_2$  anteriorly; Fig. 380. *P. (P.) kaszabi* PAPP, male  $t_2$  dorsally. Figs. 376, 380 based on holotype of *L. latigena*, Figs. 377–379 on males from Czechoslovakia. Scales = 0.2 mm.

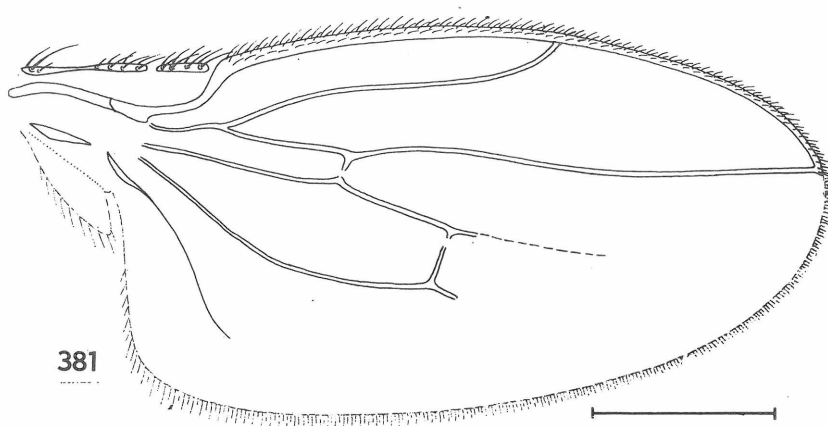
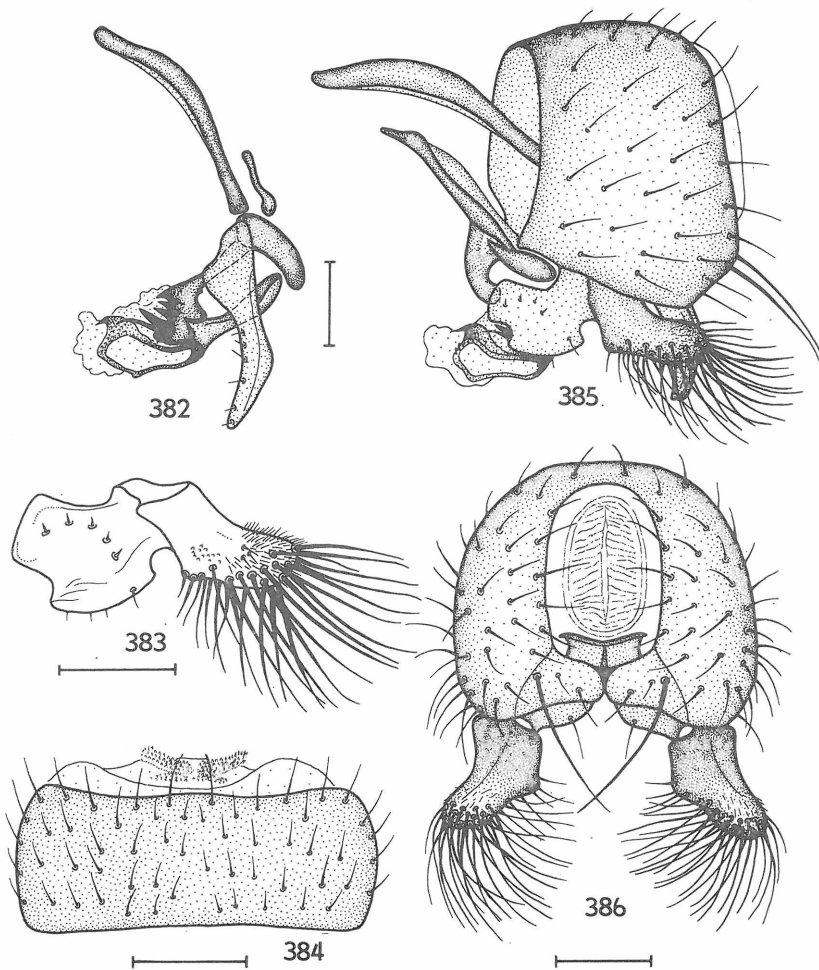
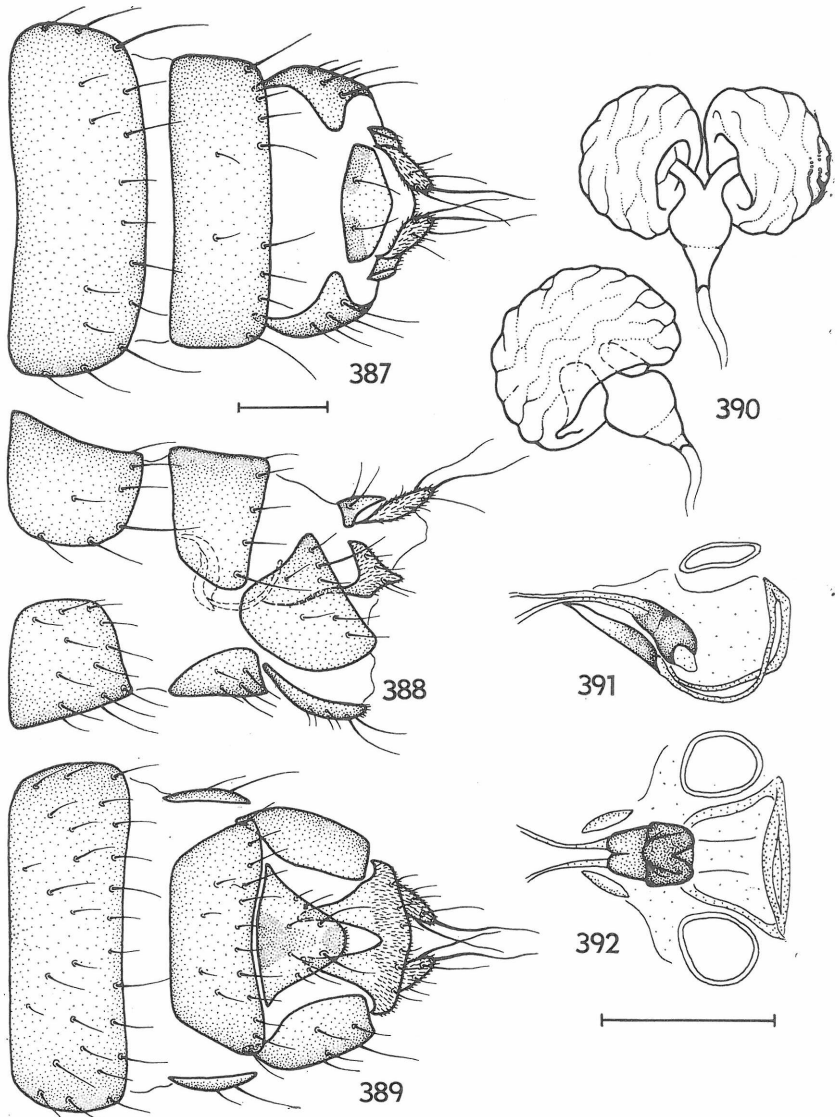


Fig. 381. *Paralimosina (P.) trichopyga* (RICHARDS) (♂, Czechoslovakia), wing. Scale = 0.5 mm.



Figs. 382–386. *Paralimosina (P.) trichopyga* (RICHARDS). 382 – aedeagal complex laterally (only left postgonite figured); 383 – telomere (both based on ♂ holotype); 384 – male S5; 385 – male genitalia; 386 – ditto caudally (aedeagal complex omitted) (all based on males from Czechoslovakia). Scales: Fig. 384 = 0.2 mm, others = 0.1 mm.



Figs. 387–392. *Paralimosina* (*P.*) *trichopyga* (RICHARDS) (♀, Czechoslovakia). 387 – postabdomen dorsally; 388 – dtto laterally; 389 – dtto ventrally; 390 – spermathecae; 391 – spectacles-shaped sclerite laterally; 392 – dtto ventrally. Scales = 0.1 mm.



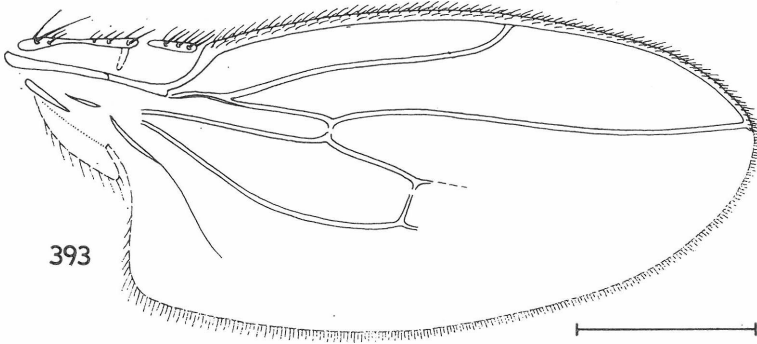
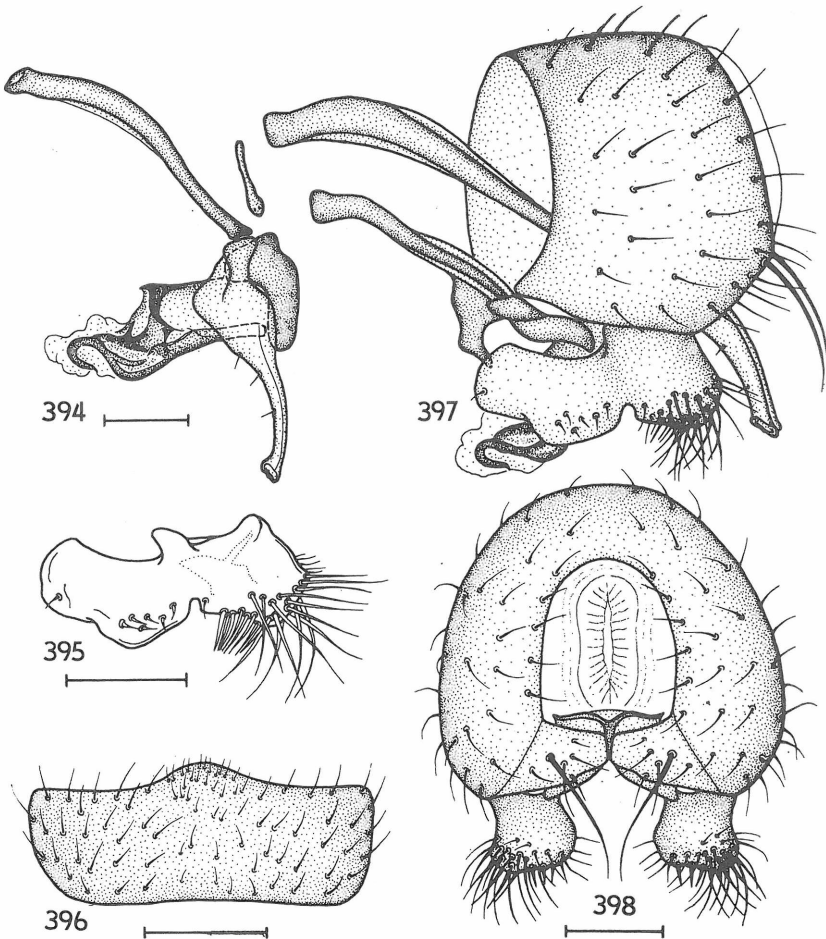
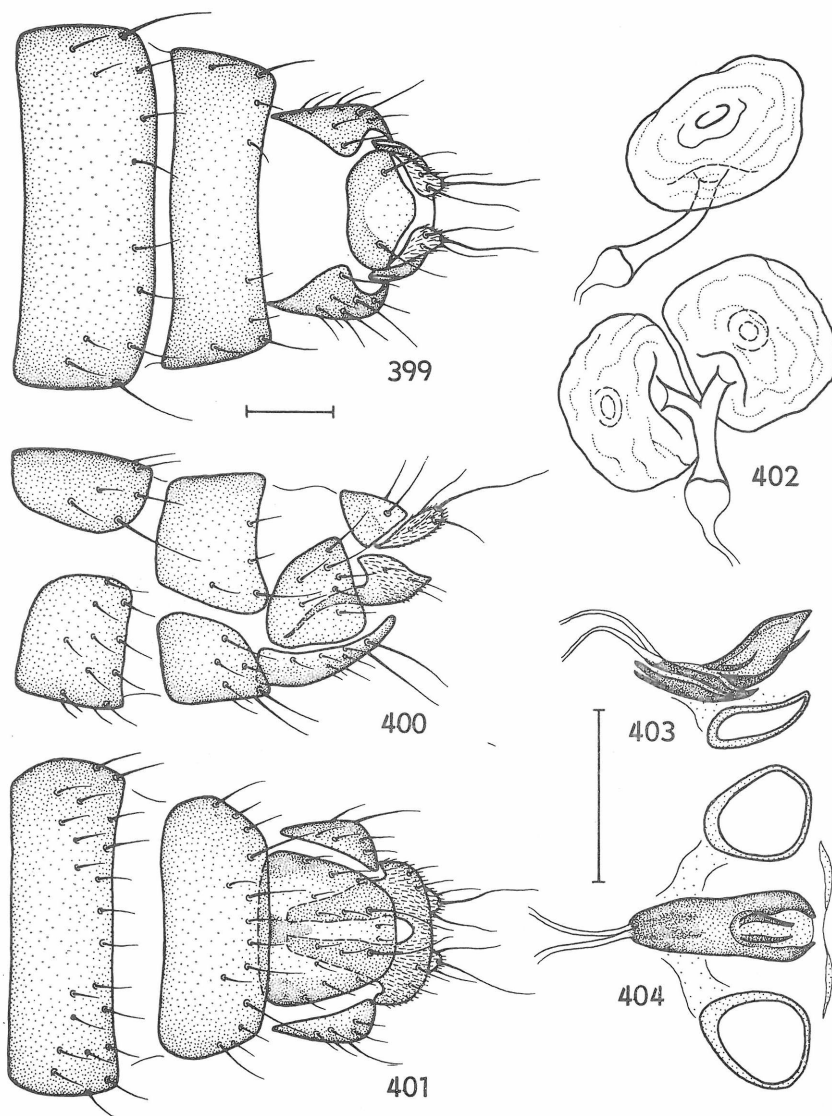


Fig. 393. *Paratimosina (P.) kaszabi* PAPP (♀ paratype of *L. latigena*), wing. Scale = 0.5 mm.



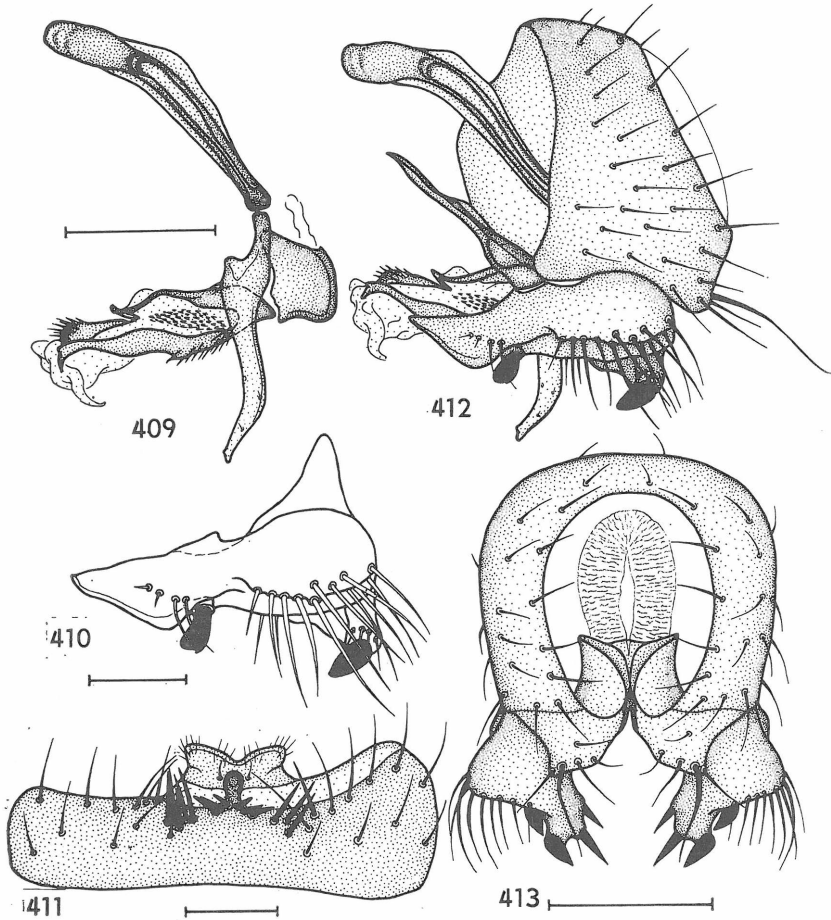
Figs. 394–398. *Paratimosina (P.) kaszabi* PAPP. 394 – aedeagal complex laterally (only left postgonite figured); 395 – telomere (both based on holotype of *L. latigena*); 396 – male S5; 397 – male genitalia laterally; 398 – ditto caudally (aedeagal complex omitted) (based on males from Czechoslovakia). Scales: Fig. 396 = 0.2 mm, others = 0.1 mm.



Figs. 399–404. *Paralimosina* (*P.*) *kaszabi* PAPP (♀ paratype of *L. latigena*). 399 – postabdomen dorsally; 400 – ditto laterally; 401 – ditto ventrally; 402 – spermathecae; 403 – spectacles-shaped sclerite laterally; 404 – ditto ventrally. Scales = 0.1 mm.

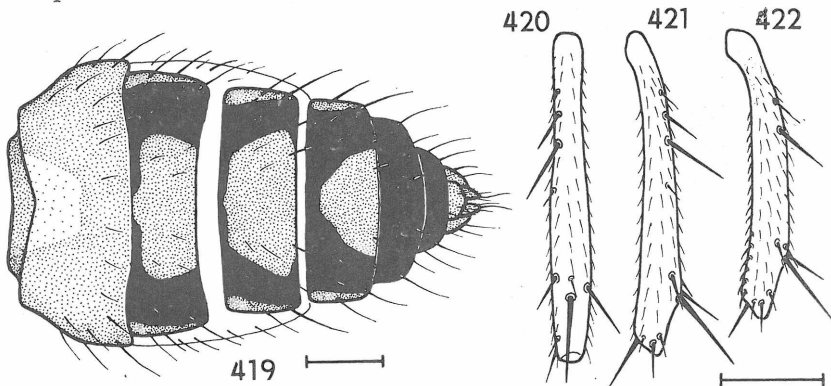
Fig. 405–407: p. 204.

Fig. 408: p. 203.

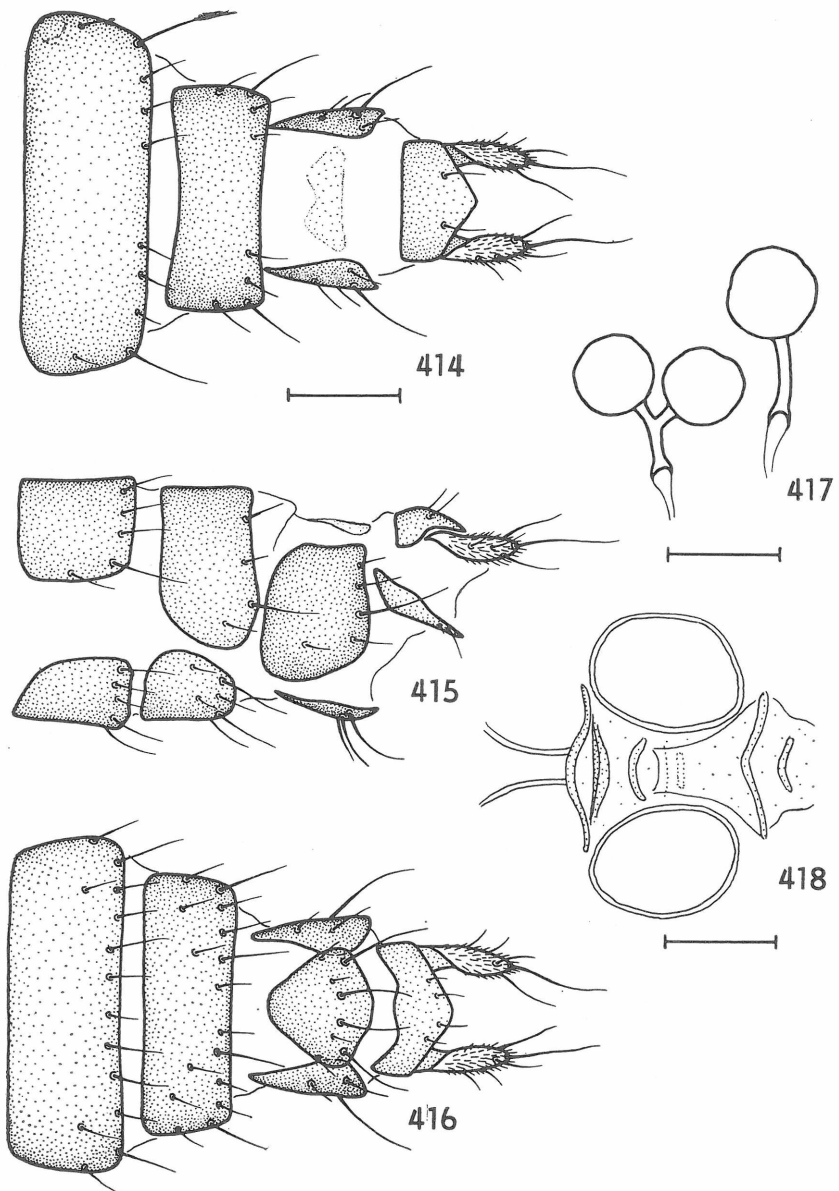


Figs. 409—413. *Paralimosina (C.) beckeri* (DUDA) (♂, Canary Is.). 409 — aedeagal complex laterally (only left postgonite figured); 410 — telomere; 411 — S5; 412 — genitalia laterally; 413 — ditto caudally (aedeagal complex omitted). Scales: Fig. 410 = 0.05 mm, others = 0.1 mm.

Fig. 414—418: p. 214.



Figs. 419—422. *Spelobia (E.) ochripes* (MEIGEN) (Czechoslovakia). 419 — female abdomen dorsally (pruinose areas dotted); 420 — female  $t_2$  dorsally; 421 — ditto anteriorly; 422 — male  $t_2$  anteriorly. Scales = 0.2 mm.



Figs. 414–418. *Paralimosina* (*C.*) *beckeri* (DUDA) (♀, Canary Is.). 414 – postabdomen dorsally; 415 – ditto laterally; 416 – ditto ventrally; 417 – spermathecae; 418 – spectacles-shaped sclerite ventrally. Scales: Figs. 414–416 = 0.1 mm, Figs. 417, 418 = 0.05 mm.

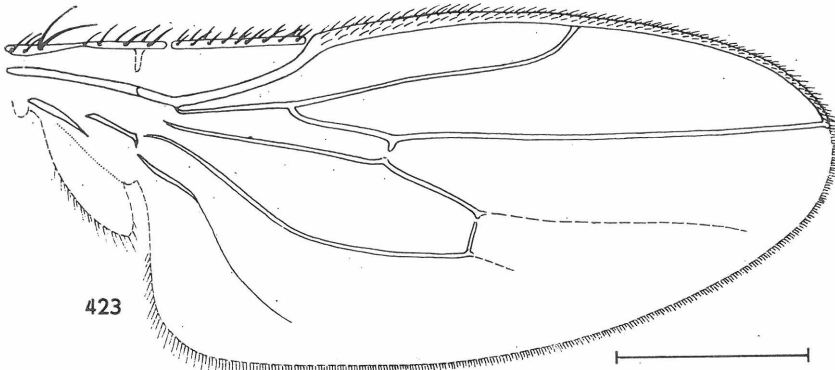
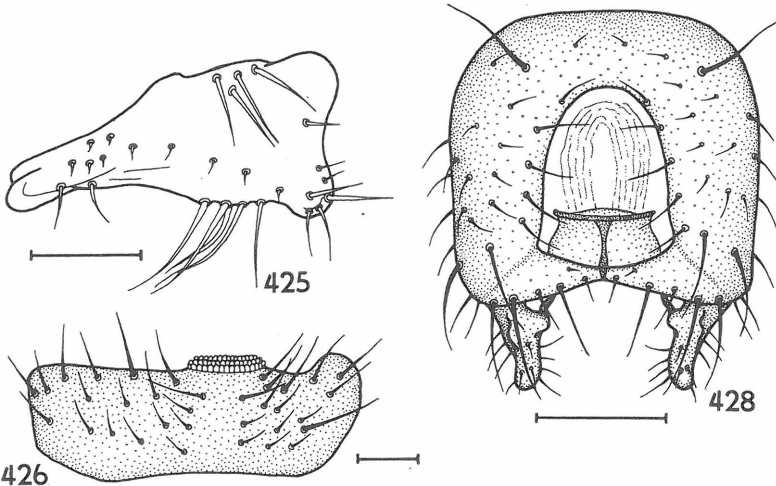
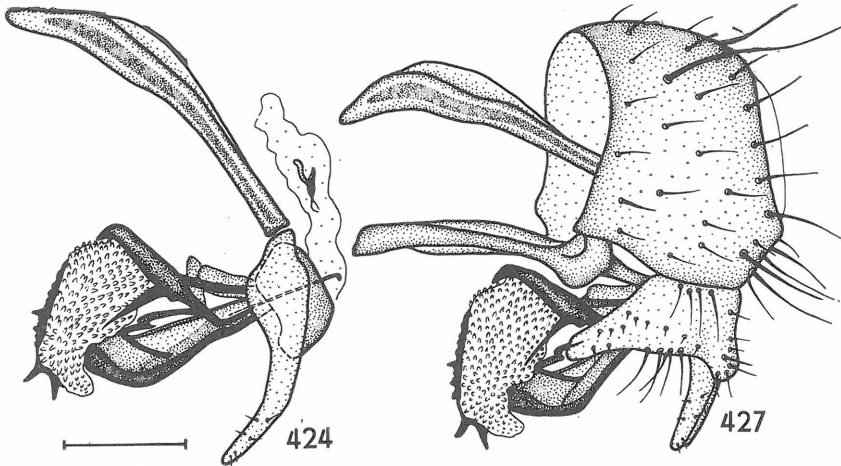
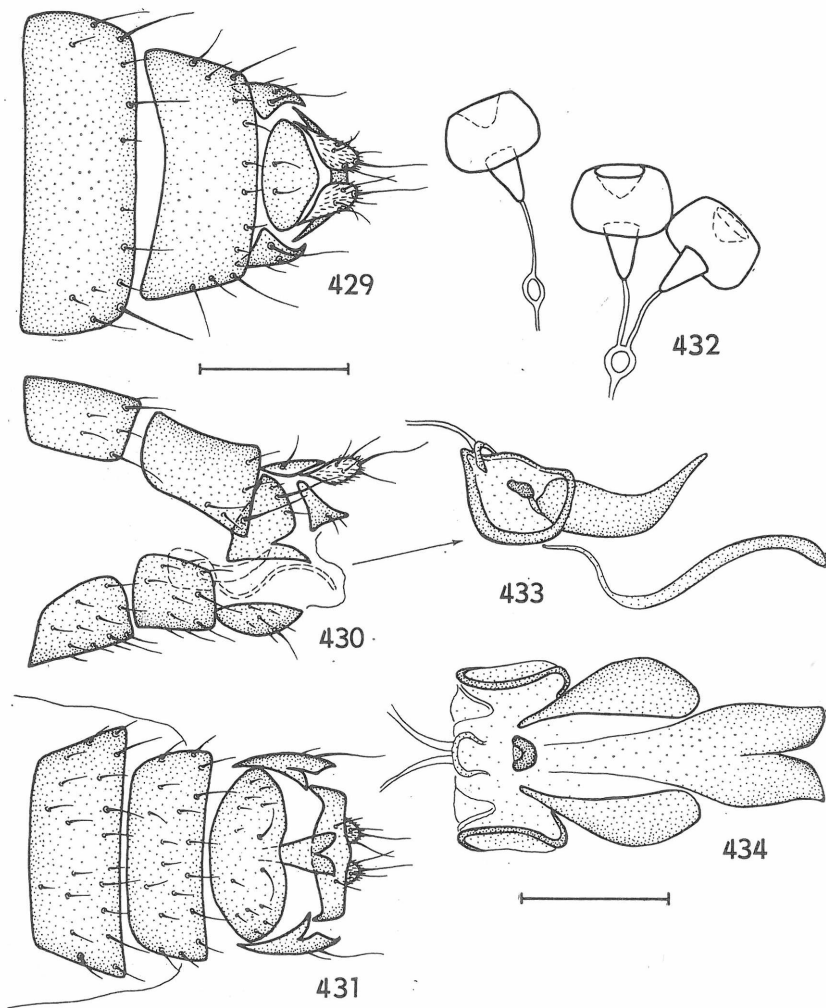


Fig. 423. *Spelobia (E.) ochripes* (MEIGEN) (♀, Czechoslovakia), wing. Scale = 0.5 mm.



Figs. 424 - 428. *Spelobia (E.) ochripes* (MEIGEN) (♂, Czechoslovakia). 424 - aedeagal complex laterally (only left postgonite figured); 425 - telomere; 426 - *S5*; 427 - genitalia laterally; 428 - ditto caudally (aedeagal complex omitted). Scales: Fig. 425 = 0.05 mm, others = 0.1 mm.



Figs. 429–434. *Spelobia (E.) ochripes* (MEIGEN) (♀, Czechoslovakia). 429 – postabdomen dorsally; 430 – ditto laterally; 431 – ditto ventrally; 432 – spermathecae; 433 – spectacles-shaped sclerite laterally; 434 – ditto ventrally. Scales: Figs. 429–431 = 0.2 mm, Figs. 432–434 = 0.1 mm.

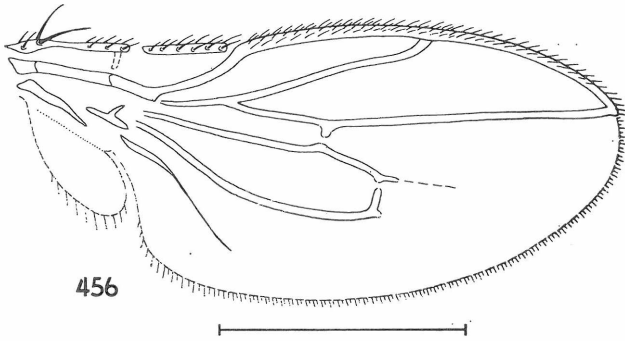


Fig. 456. *Spelobia (S.) manicata* (RICHARDS) (♂, Czechoslovakia), wing. Scale = 0.5 mm.

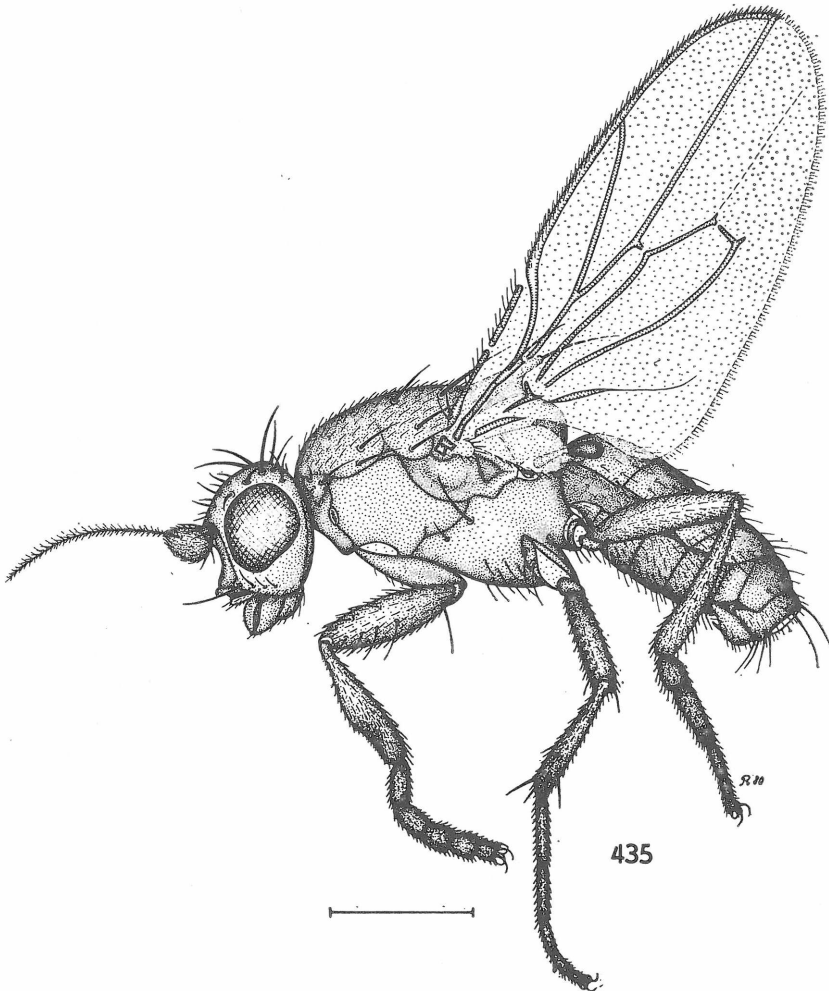


Fig. 435. *Spelobia (S.) clunipes* (MEIGEN), male (Czechoslovakia). Scale = 0.5 mm.

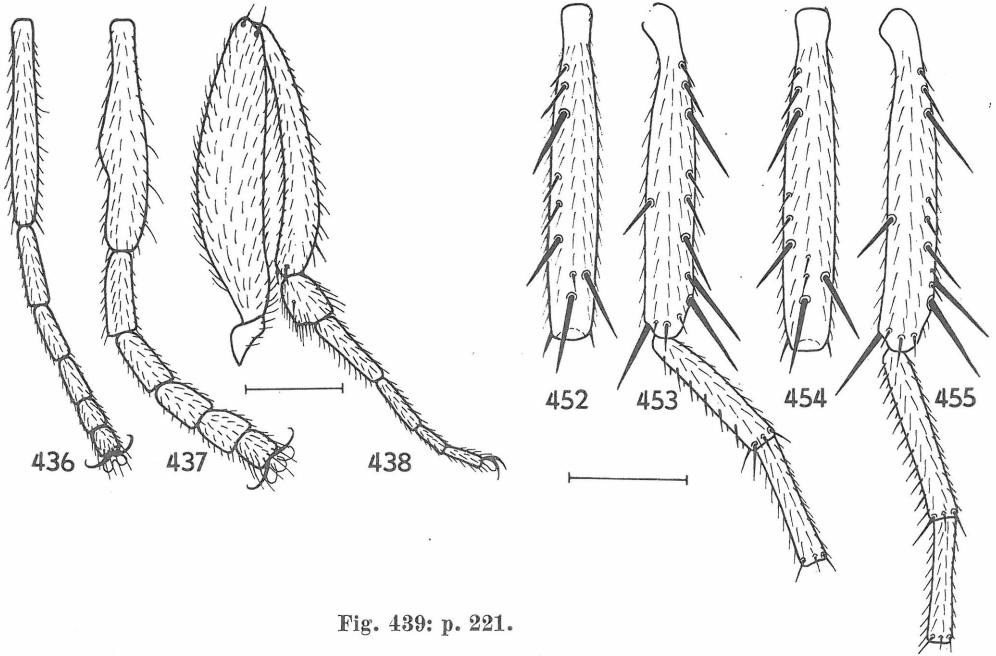
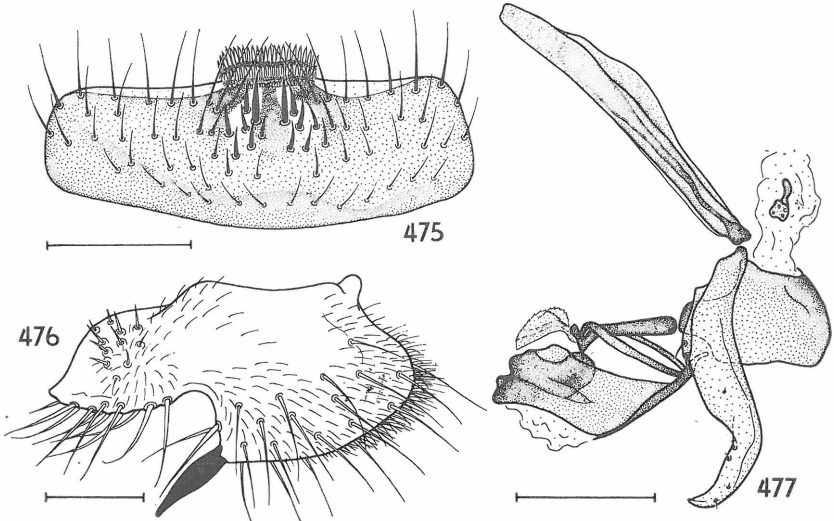


Fig. 439: p. 221.

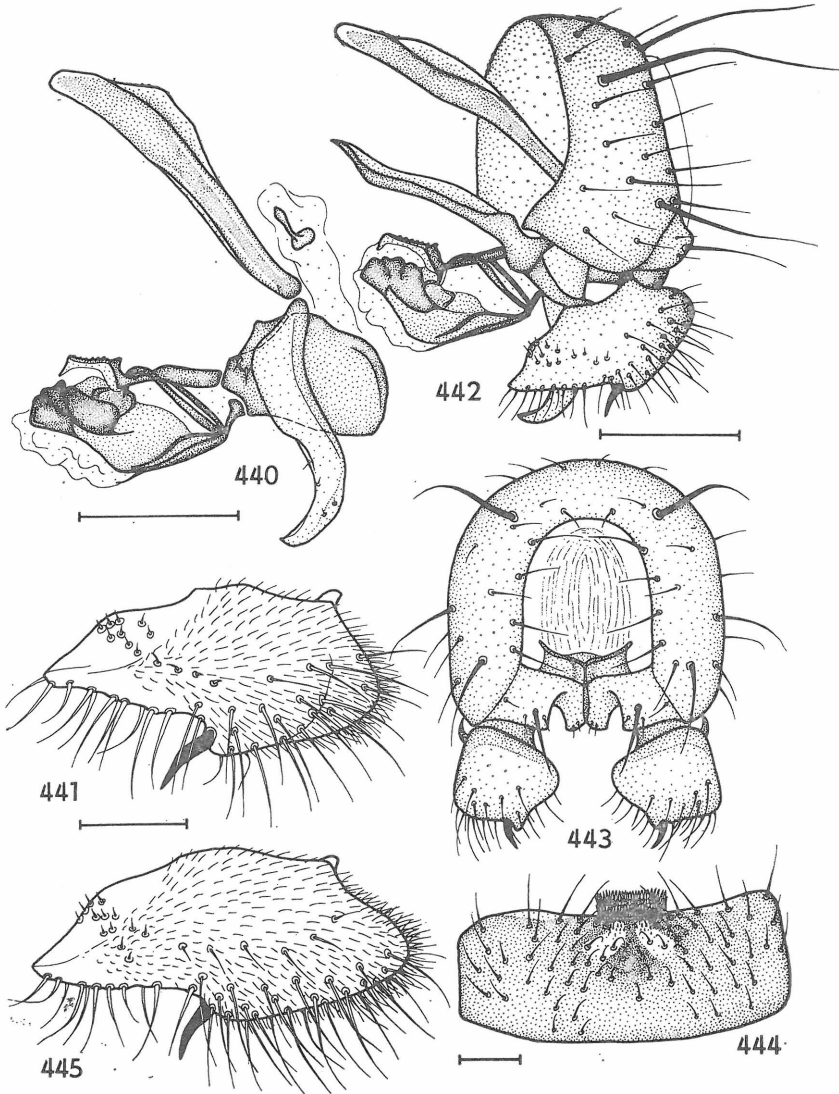
Figs. 436—438. Fig. 436. *Spelobia* (*S.*) *faeroensis* (DEEMING), male  $t_1$  and fore tarsus dorsally; Fig. 437. *Spelobia* (*S.*) *clunipes* (MEIGEN), dtto; Fig. 438. *Spelobia* (*S.*) *faeroensis* (DEEMING), male hind leg (without coxa) anteriorly. All figures based on specimens from Czechoslovakia. Scale = 0.2 mm.

Figs. 452—455. Figs. 452, 453. *Spelobia* (*S.*) *clunipes* (MEIGEN) ( $\delta$ , Czechoslovakia). 452 —  $t_2$  dorsally; 453 —  $t_2$ ,  $mt_2$  and 2nd tarsal segment anteriorly. Figs. 454, 455. *Spelobia* (*S.*) *manicata* (RICHARDS) ( $\delta$ , Czechoslovakia). 454 —  $t_2$  dorsally; 455 —  $t_2$ ,  $mt_2$  and 2nd tarsal segment anteriorly. Scale = 0.2 mm.

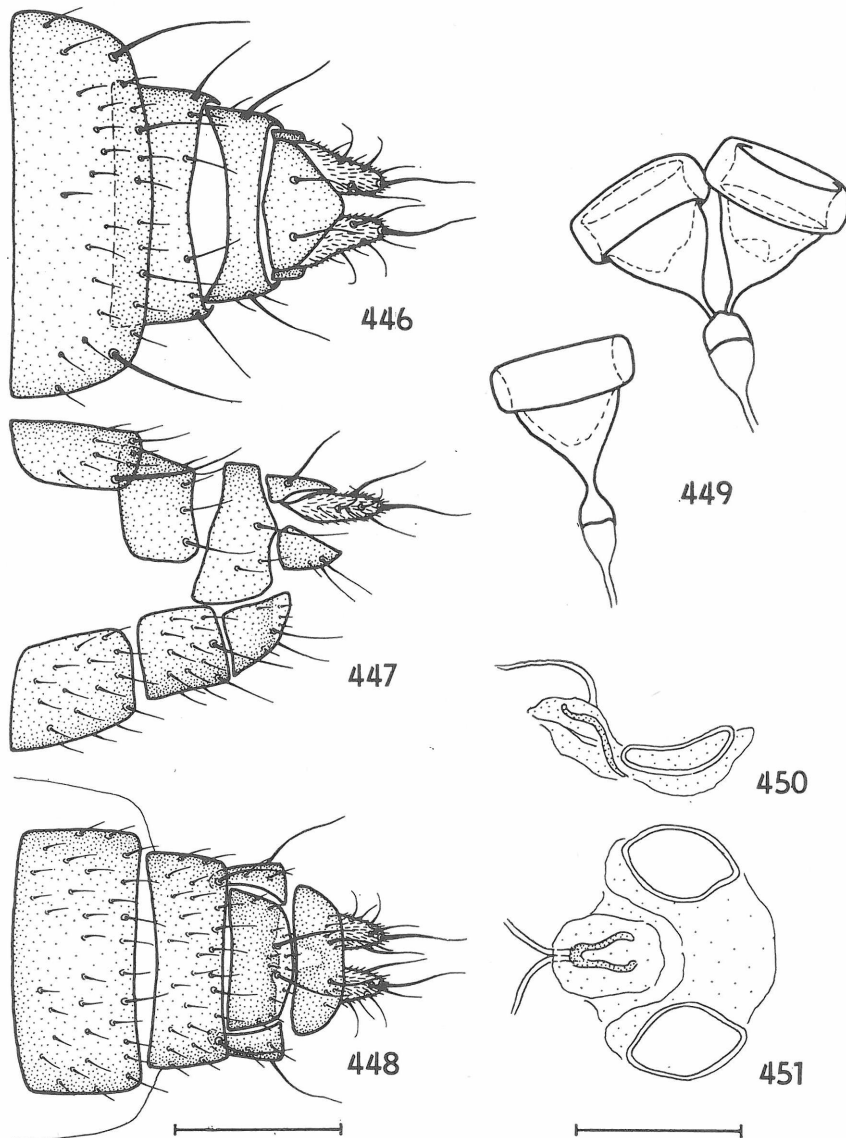


Figs. 475—477. *Spelobia* (*S.*) *palmata* (RICHARDS) ( $\delta$ , Czechoslovakia). 475 — S5; 476 — telomere; 477 — aedeagal complex laterally (only left postgonite figured). Scales: Fig. 475 = 0.2 mm; 476 = 0.05 mm; 477 = 0.1 mm.





Figs. 440–445. Figs. 440–444. *Spelobia (S.) clunipes* (MEIGEN) (♂, Czechoslovakia). 440 – aedeagal complex laterally (only left postgonite figured); 441 – telomere; 442 – genitalia laterally; 443 – dtto caudally (aedeagal complex omitted); 444 – *S5*. Fig. 445. *Spelobia (S.) manicata* (RICHARDS) (♂, Czechoslovakia), telomere. Scales: Figs. 440, 442–444 = 0.1 mm, Figs. 441, 445 = 0.05 mm.



Figs. 446–451. *Spelobia* (*S.*) *clunipes* (MEIGEN) (♀, Czechoslovakia). 446 – postabdomen dorsally; 447 – dtto laterally; 448 – dtto ventrally; 449 – spermathecae; 450 – spectacles-shaped sclerite laterally; 451 – dtto ventrally. Scales: Figs. 446–448 = 0.2 mm, Figs. 449–451 = 0.1 mm.

Fig. 452–455: p. 218.

Fig. 456: p. 217.

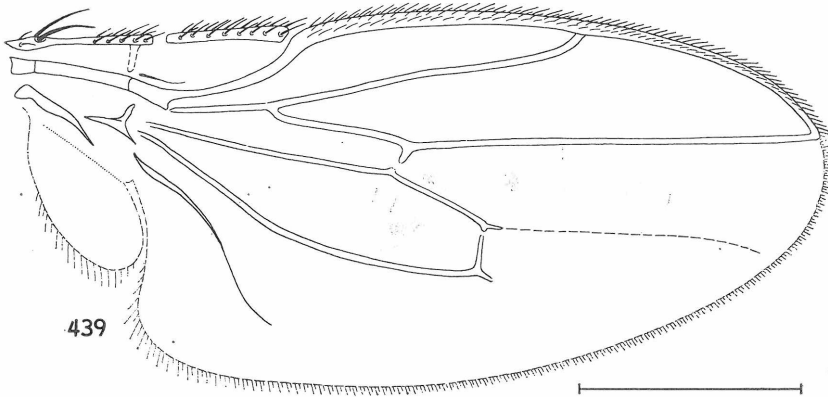


Fig. 439. *Spelobia* (*S.*) *elunipes* (MEIGEN) (♂, Czechoslovakia), wing. Scale = 0.5 mm.

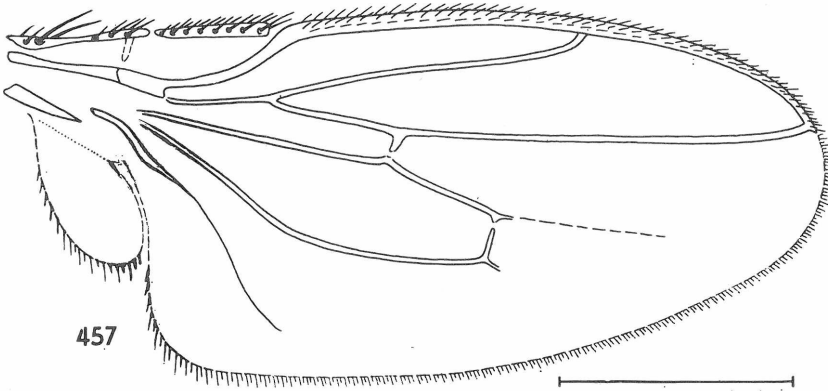


Fig. 457. *Spelobia* (*S.*) *faeroensis* (DEEMING) (♂, Czechoslovakia), wing. Scale = 0.5 mm.

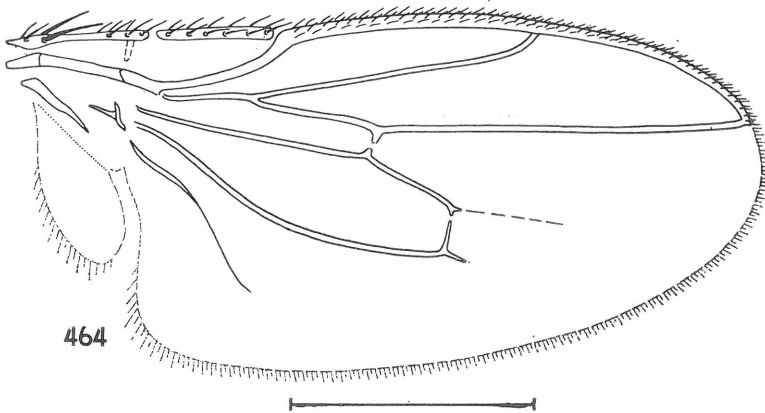
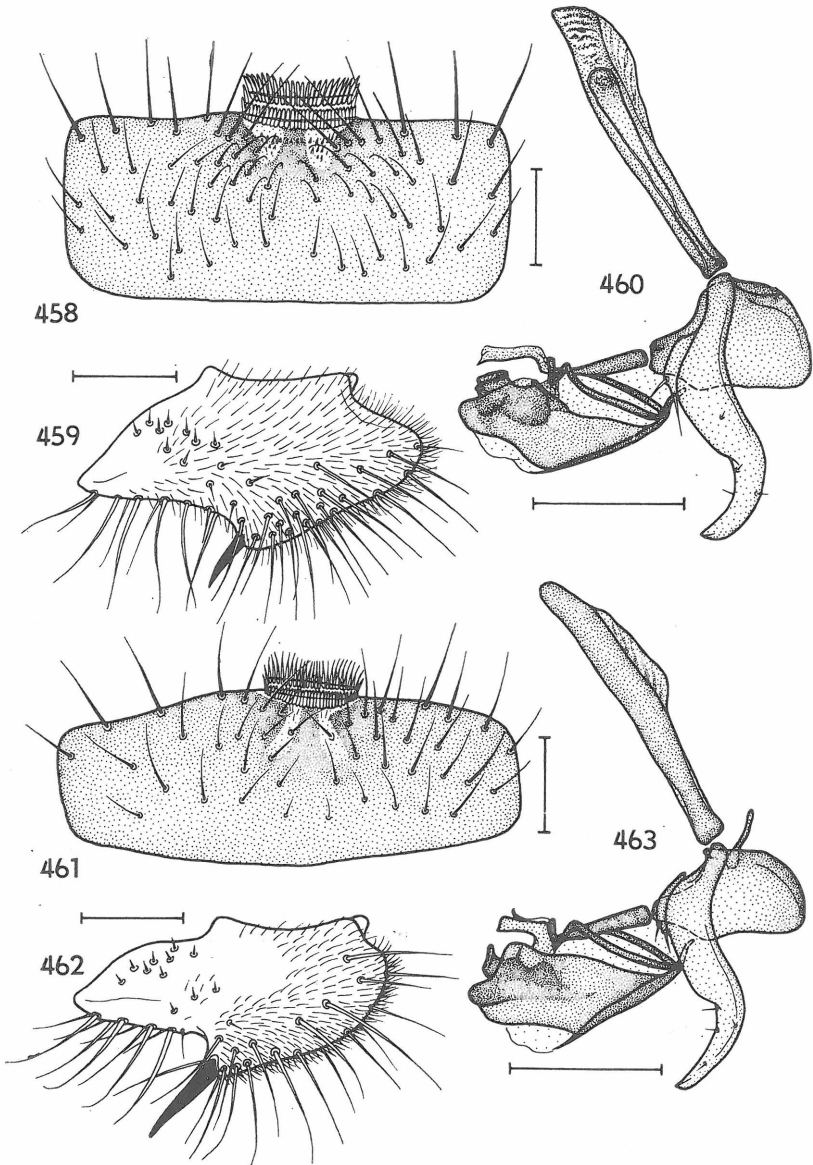
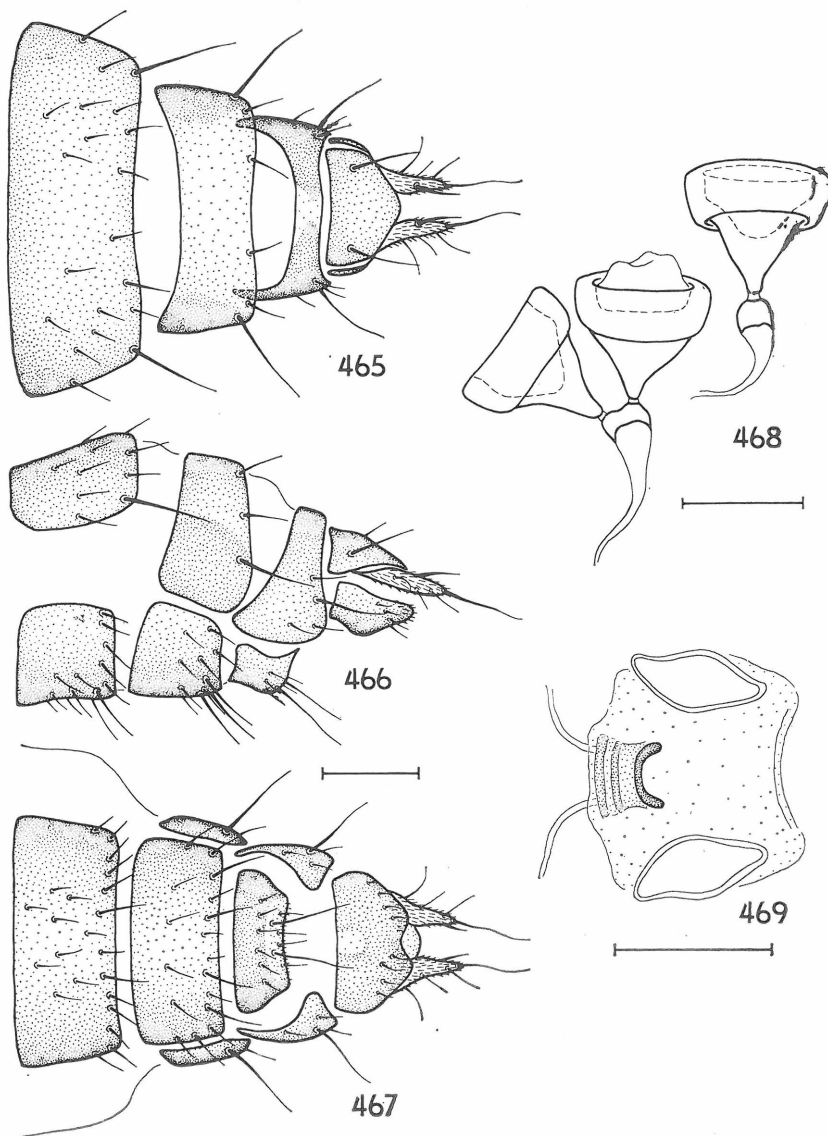


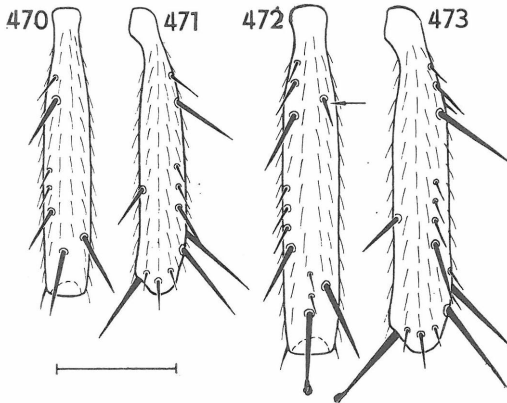
Fig. 464. *Spelobia* (*S.*) *baezi* (PAPP) (♂, Canary Is.), wing. Scale = 0.5 mm.



Figs. 458–463. Figs. 458–460. *Spelobia* (*S.*) *faeroensis* (DEEMING) (holotype). 458 – male S5; 459 – telomere; 460 – aedeagal complex laterally (only left postgonite figured). Figs. 461–463. *Spelobia* (*S.*) *baezi* (PAPP) (holotype). 461 – male S5; 462 – telomere, 463 – aedeagal complex laterally (only left postgonite figured). Scales: Figs. 458, 460, 461, 463 = 0.1 mm, Figs. 459, 462 = 0.05 mm.



Figs. 465–469. *Spelobia* (*S.*) *baezi* (PAPP) (♀, Spain). 465 – postabdomen dorsally; 466 – dtto laterally; 467 – dtto ventrally; 468 – spermathecae; 469 – spectacles-shaped sclerite ventrally. Scales: Figs. 465–467. 469 = 0.1 mm, Fig. 468 = 0.05 mm.



Figs. 470—473. Figs. 470, 471. *Spelobia (S.) baezi* (PAPP) (♀, Spain). 470 —  $t_2$  dorsally; 471 — dtto anteriorly. Figs. 472, 473. *Spelobia (S.) palmata* (RICHARDS) (♀, Czechoslovakia). 472 —  $t_2$  dorsally; 473 — dtto anteriorly. Scale = 0.2 mm. Arrow indicates proximal *pa*.

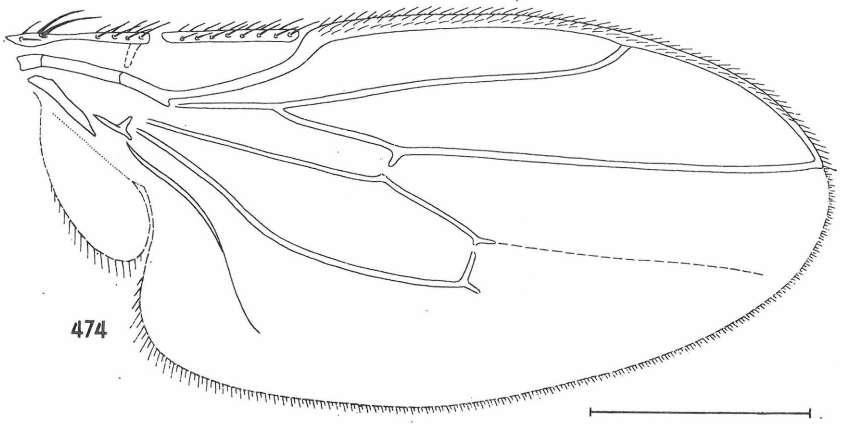


Fig. 474. *Spelobia (S.) palmata* (RICHARDS) (♂, Czechoslovakia), wing. Scale = 0.5 mm.

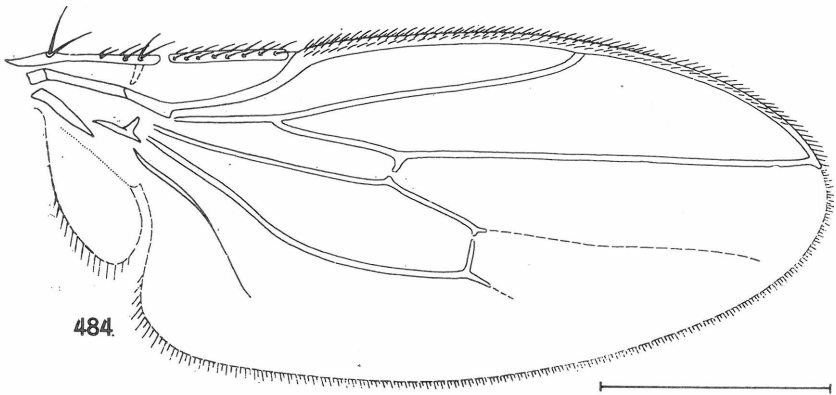
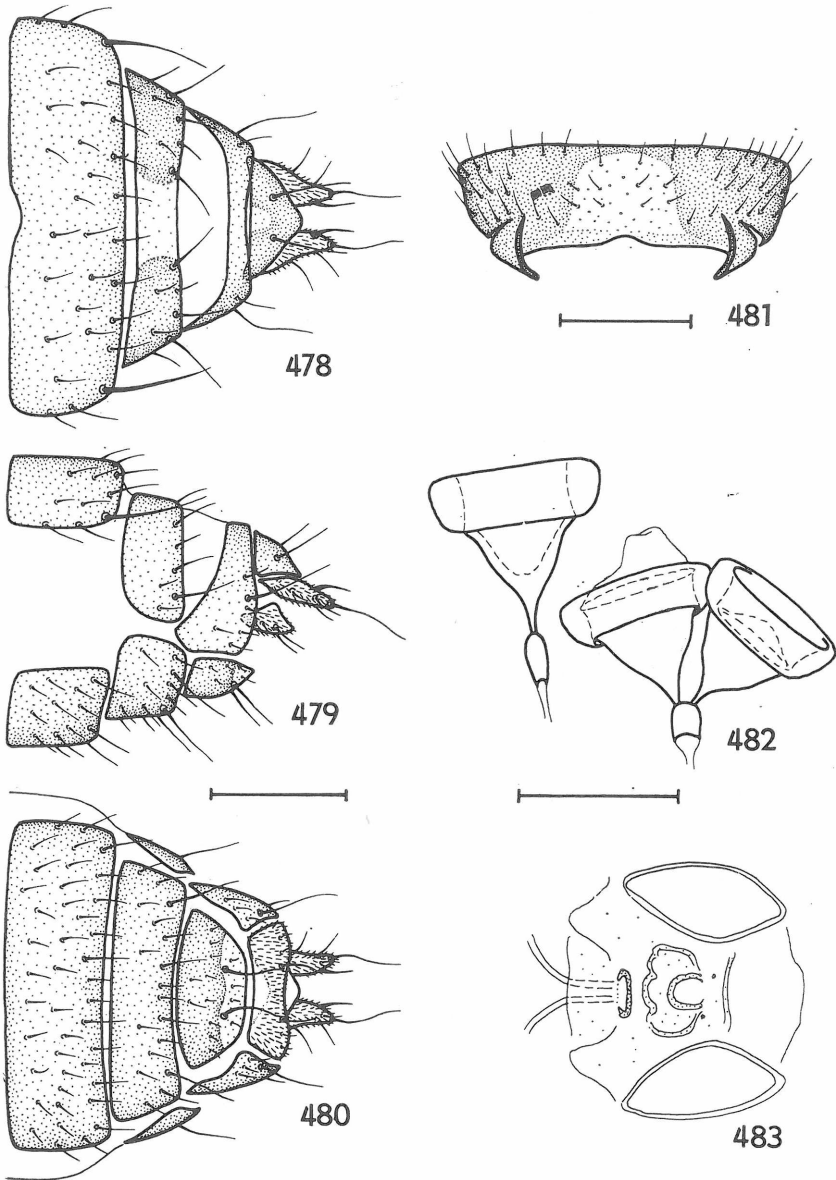
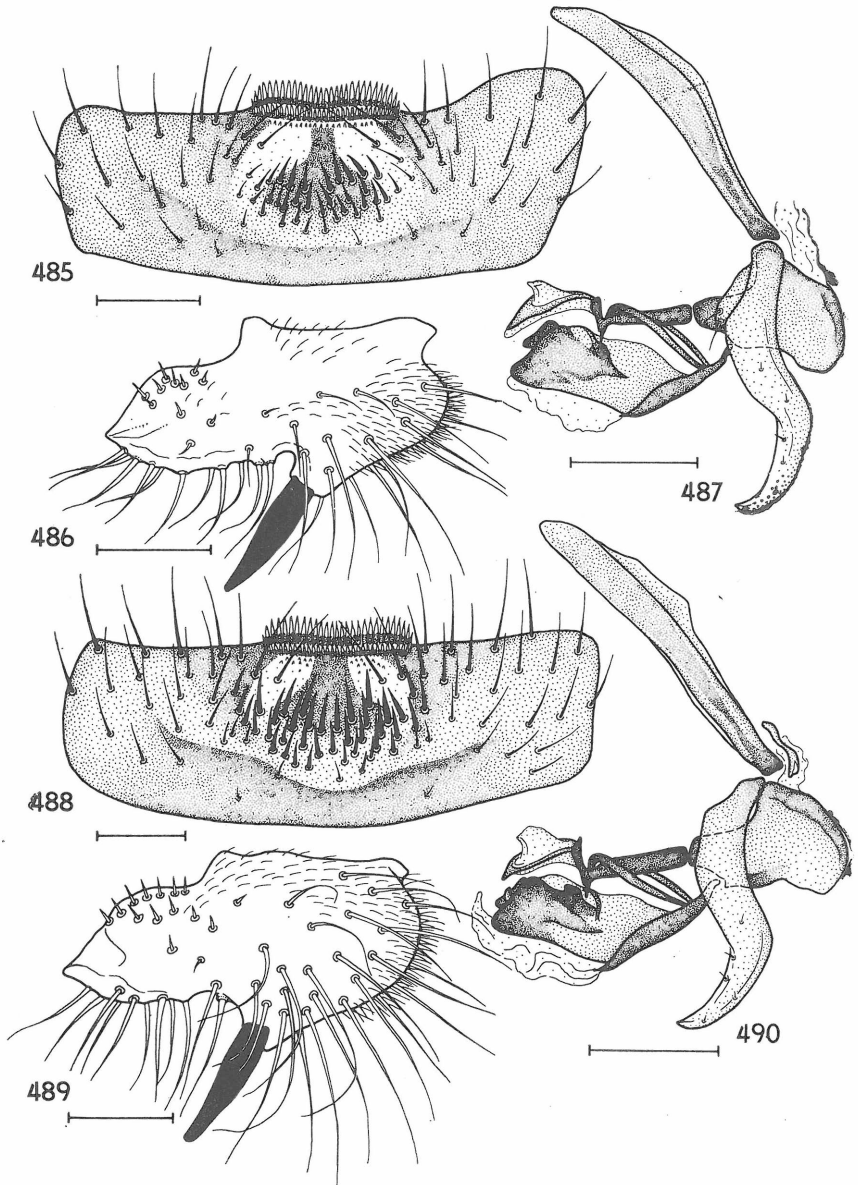


Fig. 484. *Spelobia (S.) talparum* (RICHARDS) (♂, Czechoslovakia), wing. Scale = 0.5 mm.

Fig. 475—477: p. 218.

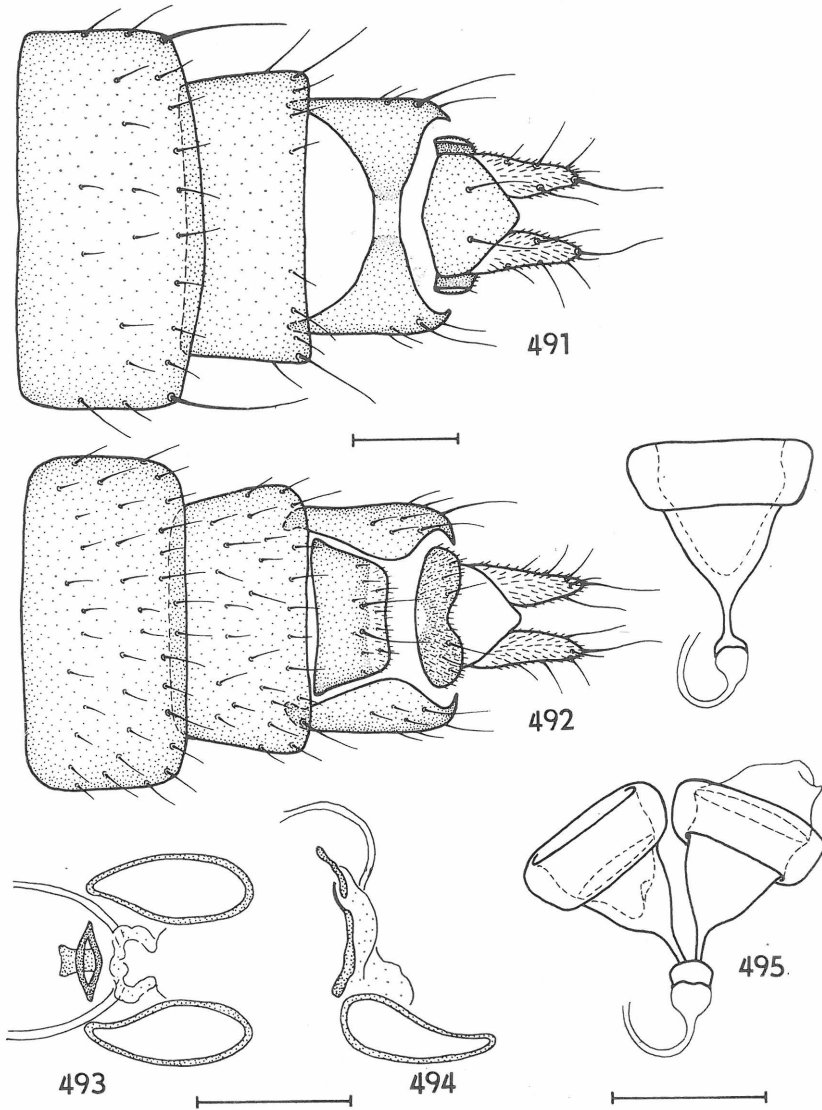


Figs. 478 - 483. *Spelobia (S.) palmata* (RICHARDS) (♀, Czechoslovakia). 478 - postabdomen dorsally; 479 - ditto laterally; 480 - ditto ventrally; 481 - *TI + 2* dorsally; 482 - spermathecae; 483 - spectacles-shaped sclerite ventrally. Scales: Figs. 478 - 480 = 0.2 mm, Fig. 481 = 0.4 mm, Figs. 482, 483 = 0.1 mm.

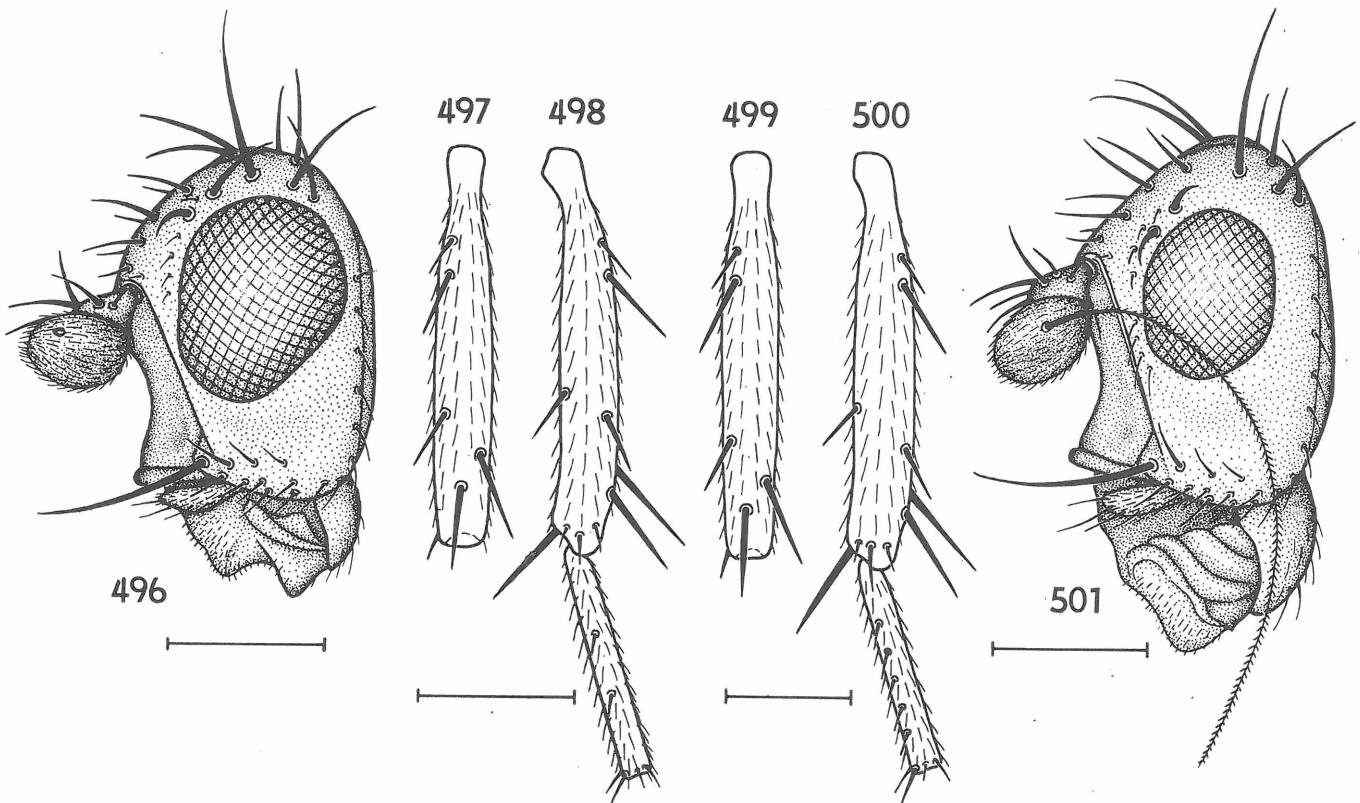


Figs. 485—490. Figs. 485—487. *Spelobia* (*S.*) *talparum* (RICHARDS) (♂, Czechoslovakia). 485 — *S5*; 486 — telomere; 487 — aedeagal complex laterally (only left postgonite figured); Figs. 488—490. *Spelobia* (*S.*) *talis* spec. nov. 488 — *S5* (holotype); 489 — telomere (paratype); 490 — aedeagal complex laterally (only left postgonite figured) (holotype). Scales: Figs. 485, 487, 488, 490 = 0.1 mm, Figs. 486, 489 = 0.05 mm.





Figs. 491–495. *Spelobia* (*S.*) *talparum* (RICHARDS) (♀, Czechoslovakia). 491 – postabdomen dorsally; 492 – ditto ventrally; 493 – spectacles-shaped sclerite ventrally; 494 – ditto laterally; 495 – spermathecae. Scales = 0.1 mm.



Figs. 496–501. Figs. 496–498. *Spelobia* (*S.*) *talparum* (RICHARDS) (Czechoslovakia). 496 – head laterally ( $\sigma$ , arista omitted); 497 – female  $t_2$  dorsally; 498 – female  $t_2$  and  $m_2$  anteriorly; Figs. 499–501. *Spelobia* (*S.*) *talis* spec. nov. 499 – female  $t_2$  dorsally; 500 – female  $t_2$  and  $m_2$  anteriorly (allotype); 501 – head laterally ( $\sigma$ , holotype). Scales = 0.2 mm.

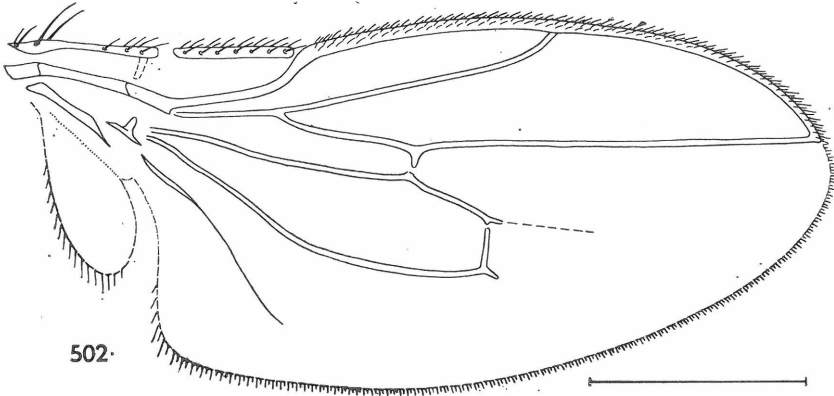
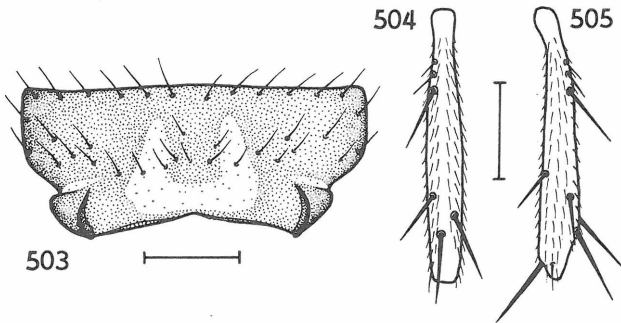


Fig. 502. *Spelobia (S.) talis* spec. nov. (♀, allotype), wing. Scale = 0.5 mm.



Figs. 503–505. *Spelobia (S.) czizeki* (DUDA) (♀, paralectotype). 503 –  $T1 + 2$  dorsally; 504 –  $t_2$  dorsally; 505 – dttio anteriorly. Scale = 0.2 mm.

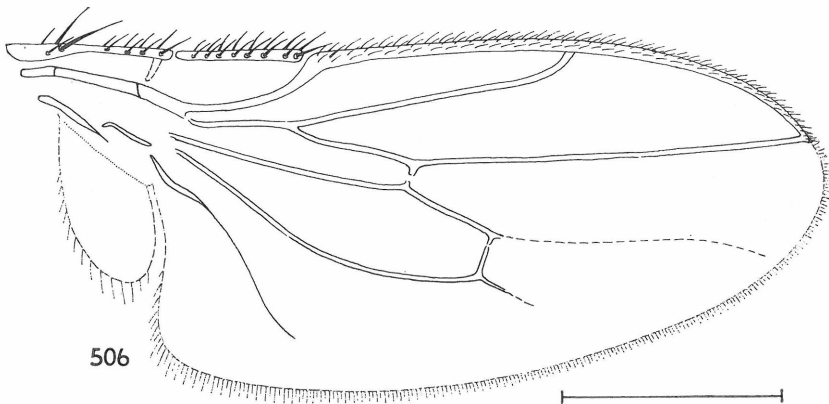
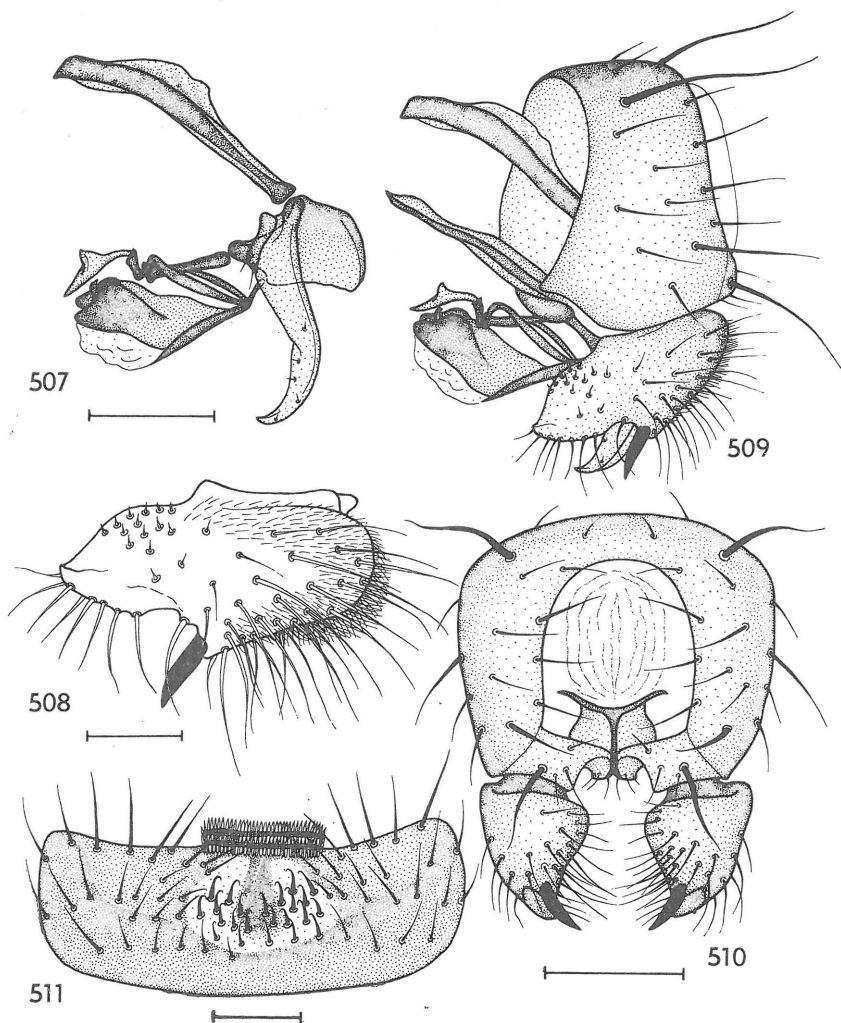
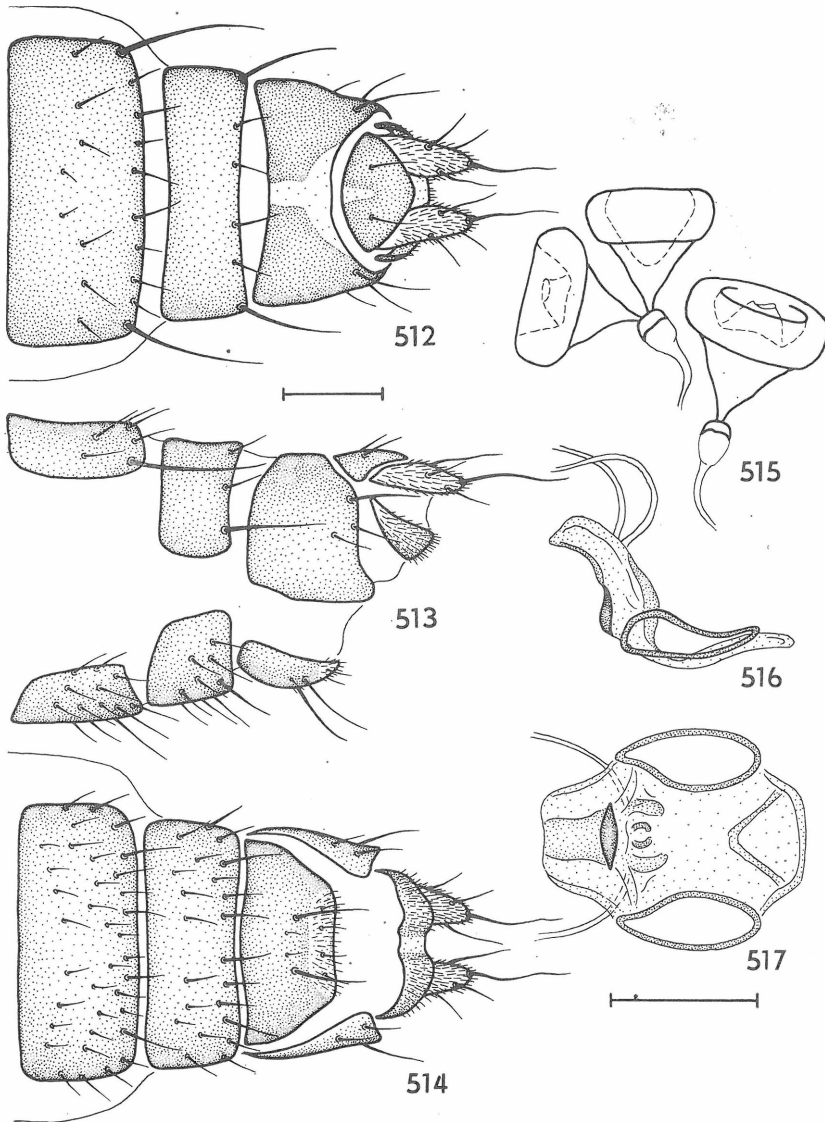


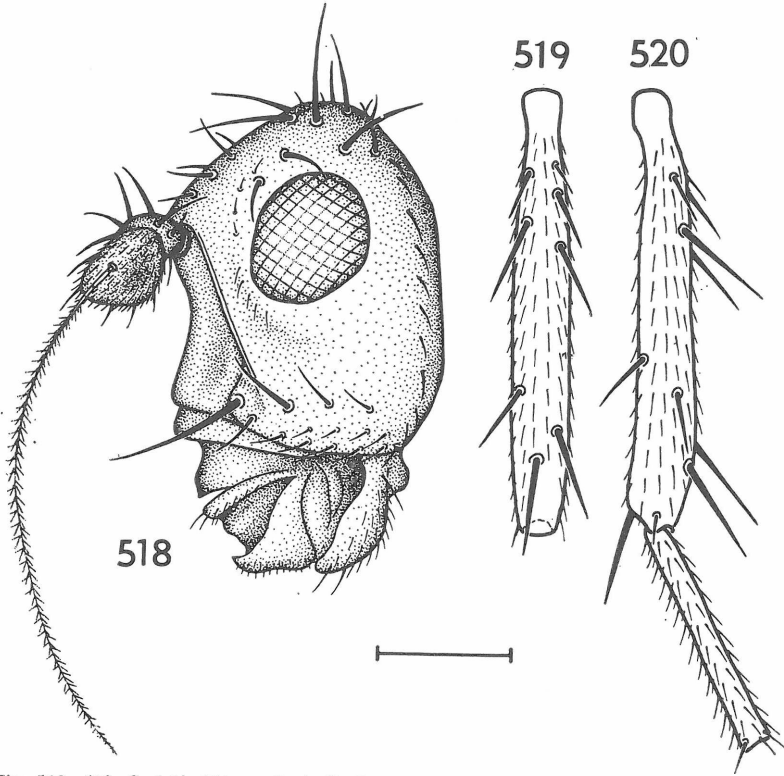
Fig. 506. *Spelobia (S.) czizeki* (DUDA) (♀, paralectotype), wing. Scale = 0.5 mm.



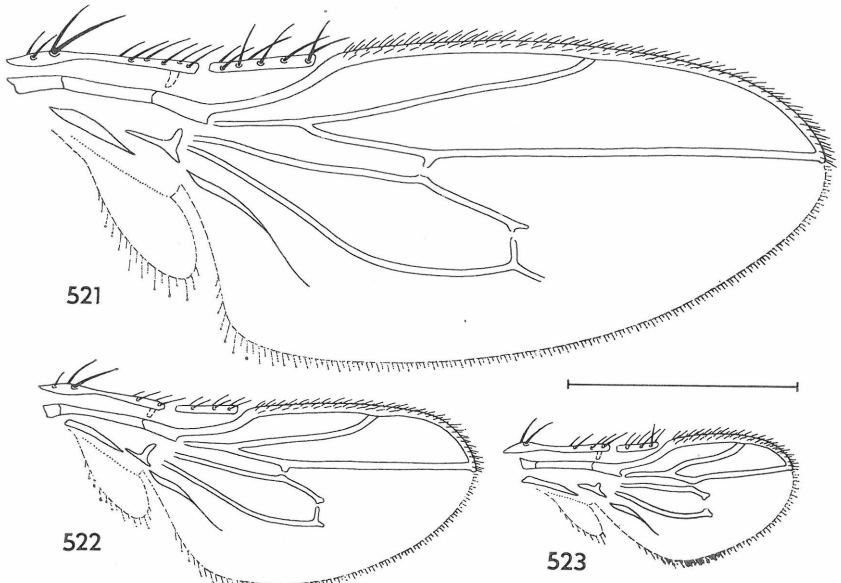
Figs. 507–511. *Spelobia* (*S.*) *czizeki* (DUDA) (♂, paralectotype). 507 – aedeagal complex laterally (only left postgonite figured); 508 – telomere; 509 – genitalia laterally; 510 – dtto caudally (aedeagal complex omitted); 511 – *S♀*. Scales: Figs. 507, 509–511 = 0.1 mm, Fig. 508 = 0.05 mm.



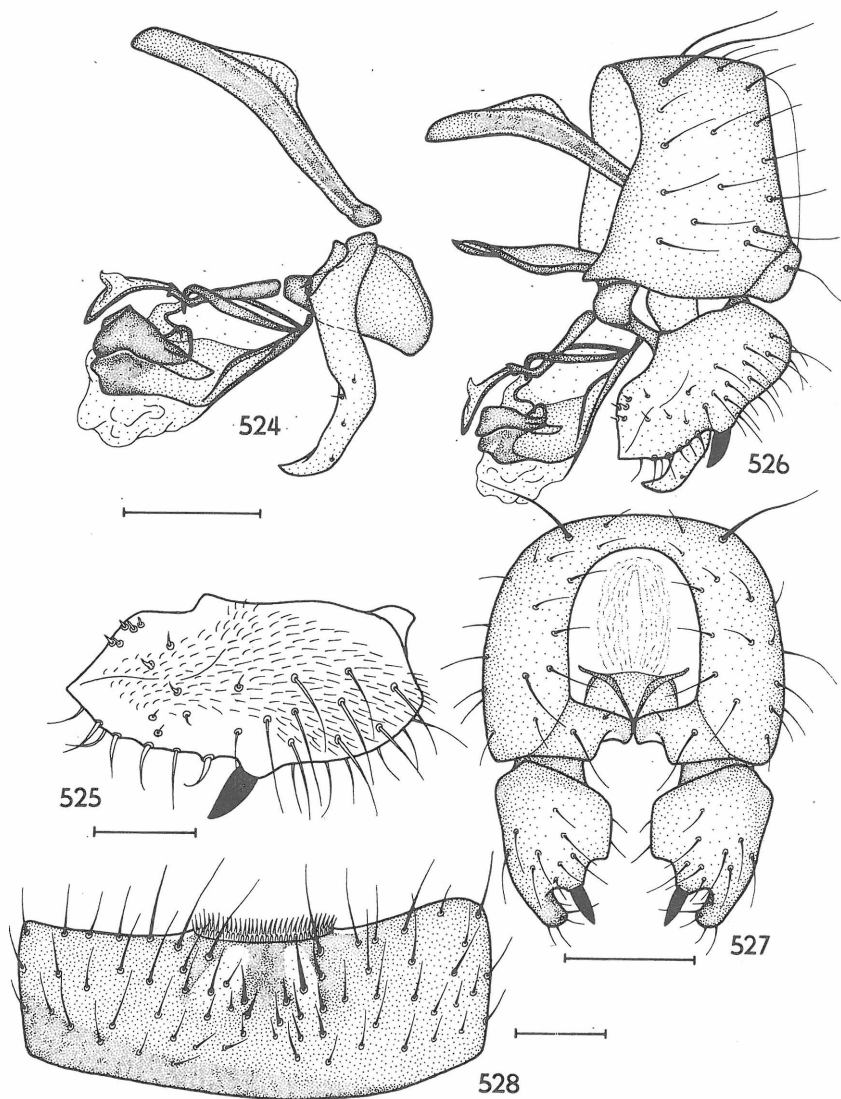
Figs. 512–517. *Spelobia* (*S.*) *czizeki* (DUDA) (♀, paralectotype). 512 – postabdomen dorsally; 513 – ditto laterally; 514 – ditto ventrally; 515 – spermathecae; 516 – spectacles-shaped sclerite laterally; 517 – ditto ventrally. Scales = 0.1 mm.



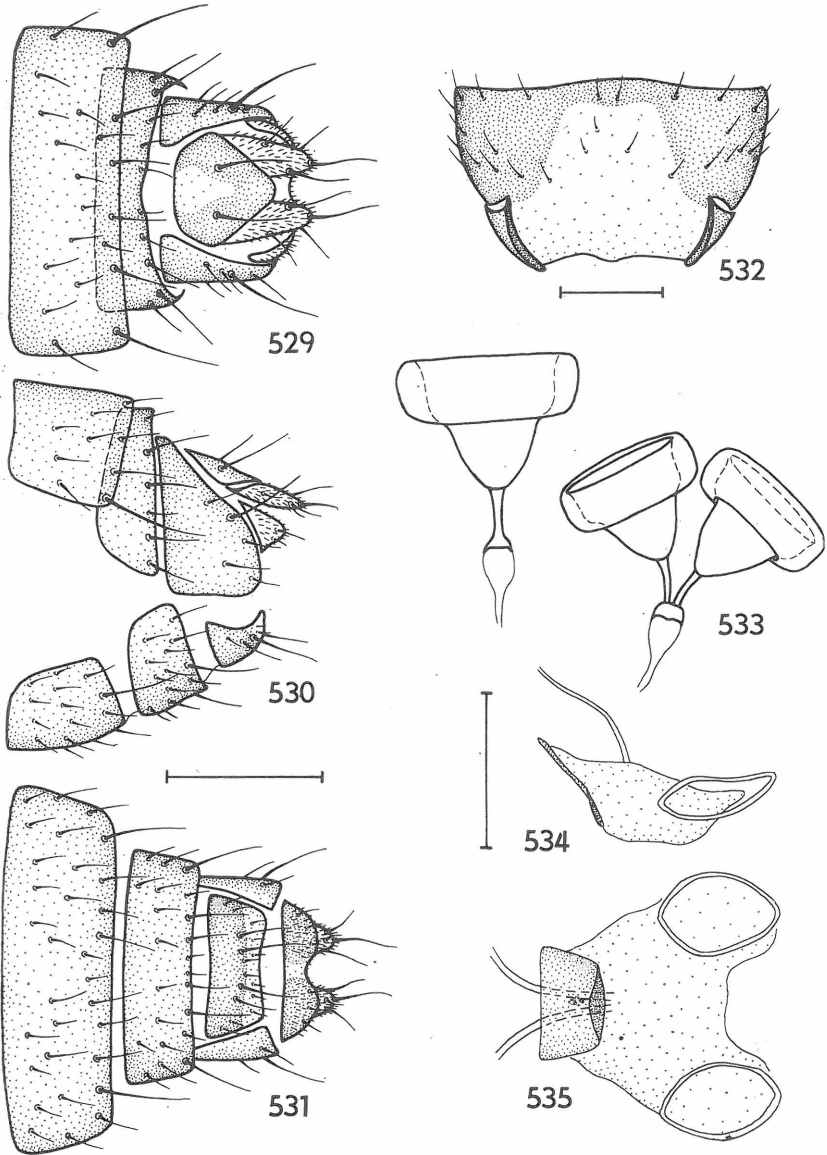
Figs. 518–520. *Spelobia* (*S.*) *pseudonivalis* (DAHL) (♀, Czechoslovakia). 518 — head laterally; 519 —  $t_2$  dorsally; 520 —  $t_2$  and  $mt_2$  anteriorly. Scale = 0.2 mm.



Figs. 521–523. *Spelobia* (*S.*) *pseudonivalis* (DAHL) (Czechoslovakia), wings. 521 — f. submacropt. (♂); 522 — f. brach. (♀); 523 — f. brach. (mutant ♀ without  $t_2$ ). Scale = 0.5 mm.

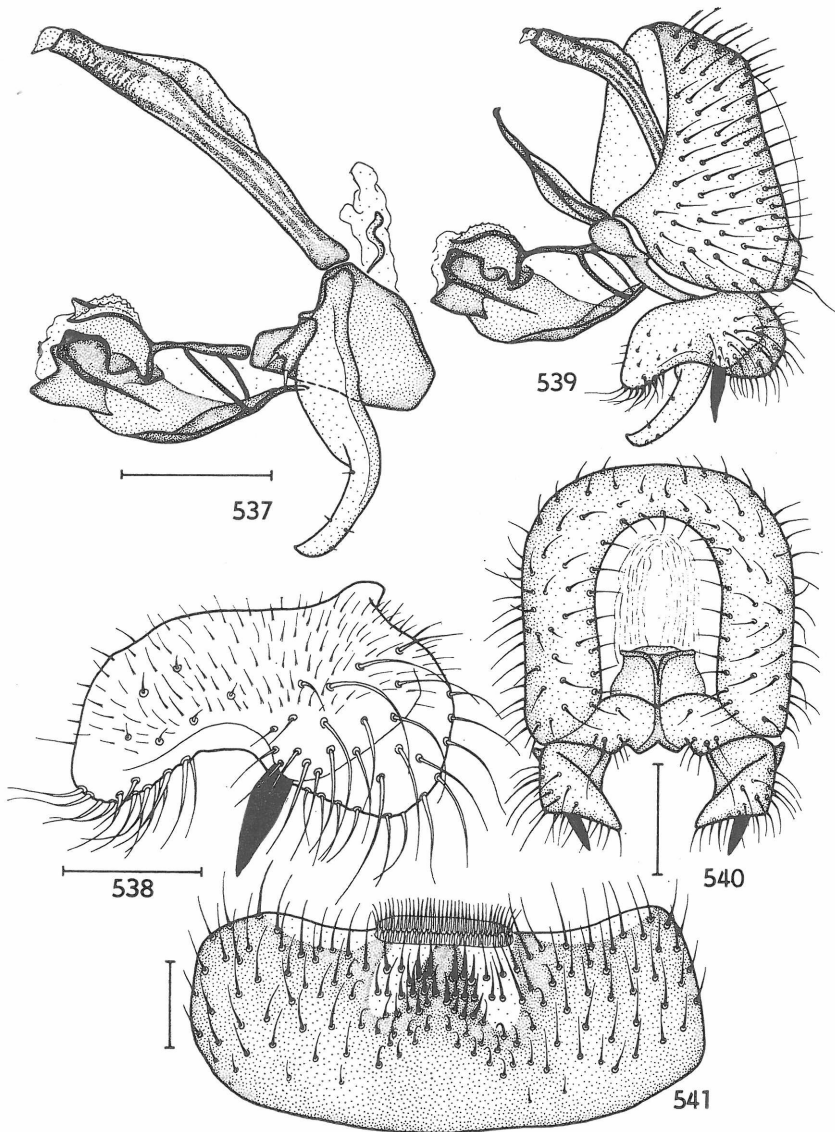


Figs. 524–528. *Spelobia* (*S.*) *pseudonivalis* (DAHL) (♂, Czechoslovakia). 524 – aedeagal complex laterally (only left postgonite figured); 525 – telomere; 526 – genitalia laterally; 527 – dtto caudally (aedeagal complex omitted); 528 – *S5*. Scales: Figs. 524, 526–528 = 0.1 mm; Fig. 525 = 0.05 mm.

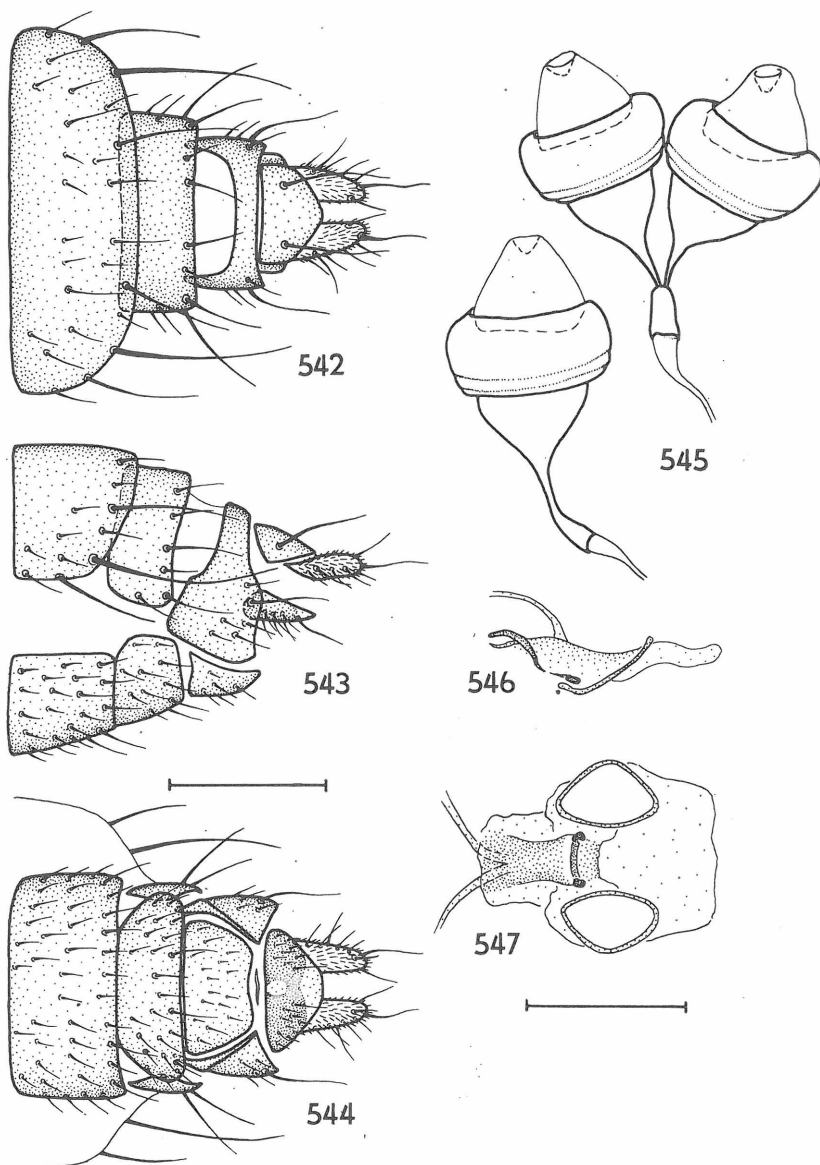


Figs. 529–535. *Spelobia* (*S.*) *pseudonivalis* (DAHL) (♀, Czechoslovakia). 529 – postabdomen dorsally; 530 – ditto laterally; 531 – ditto ventrally; 532 – *T1 + 2* dorsally; 533 – spermathecae; 534 – spectacles-shaped sclerite laterally; 535 – ditto ventrally. Scales: Figs. 529–532 = 0.2 mm, Figs. 533–535 = 0.1 mm.





Figs. 537–541. *Spelobia* (*S.*) *villosa* (DUDA) (♂, paralectotype). 537 – aedeagal complex laterally (only left postgonite figured); 538 – telomere; 539 – genitalia laterally; 540 – ditto caudally (aedeagal complex omitted), 541 – *Ss*. Scales: Figs. 537, 539–541 = 0.1 mm, Fig. 538 = 0.05 mm.



Figs. 542–547. *Spelobia* (*S.*) *villosa* (DUDA) (♀, paralectotype). 542 – postabdomen dorsally; 543 – dtto laterally; 544 – dtto ventrally; 545 – spermathecae; 546 – spectacles-shaped sclerite laterally; 547 – dtto ventrally. Scales: Figs. 542–544 = 0.2 mm, Figs. 545–547 = 0.1 mm.

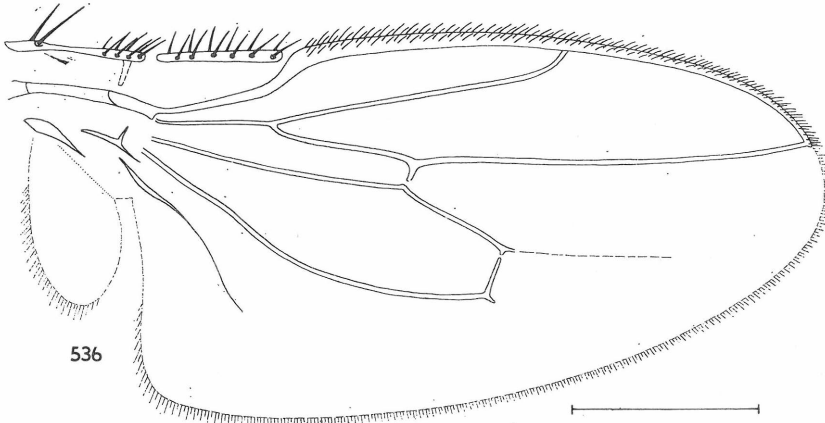
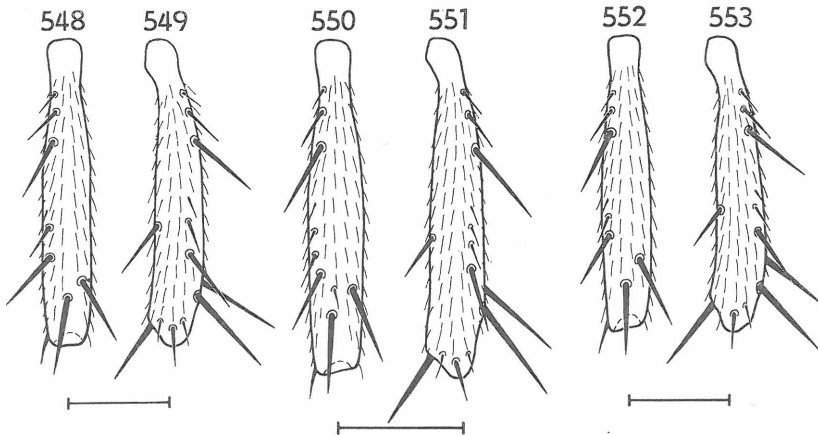


Fig. 536. *Spelobia (S.) villosa* (DUDA) (♀, paralectotype), wing. Scale = 0.5 mm.



Figs. 548–553. Figs. 548, 549. *Spelobia (S.) villosa* (DUDA) (♂, lectotype). 548 –  $t_2$  dorsally; 549 –  $t_2$  anteriorly; Figs. 550, 551. *Spelobia (S.) quaesita* spec. nov. (♂, holotype). 550 –  $t_2$  dorsally; 551 –  $t_2$  anteriorly; Figs. 552, 553. *Spelobia (S.) simplicipes* (DUDA) (♂, lectotype). 552 –  $t_2$  dorsally; 553 –  $t_2$  anteriorly. Scales = 0.2 mm.

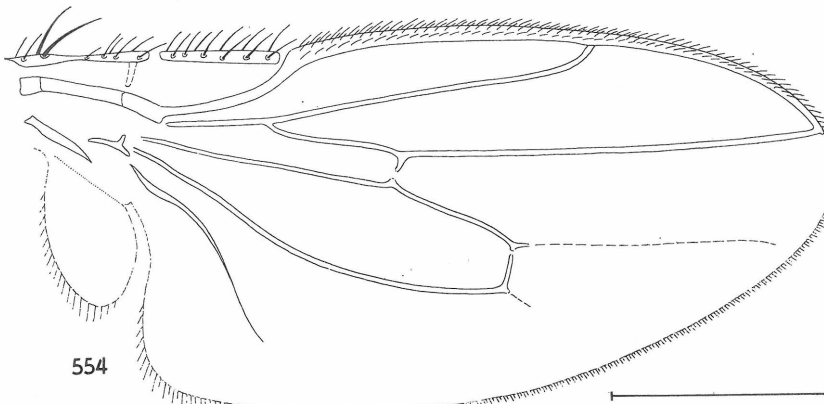
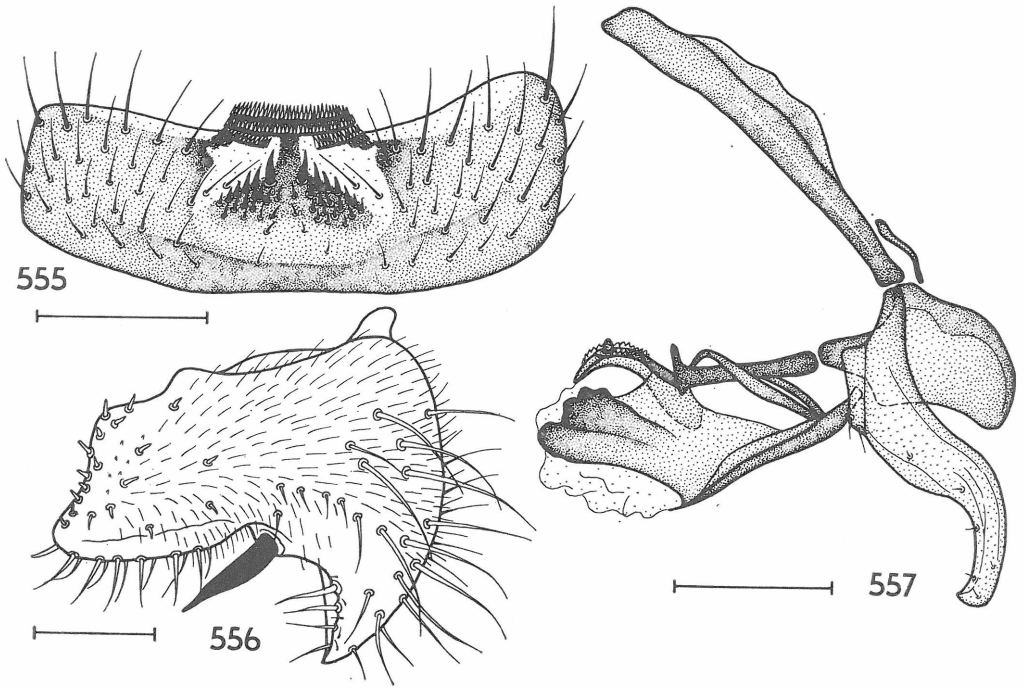


Fig. 554. *Spelobia (S.) quaesita* spec. nov. (♂, paratype), wing. Scale = 0.5 mm.



Figs. 555–557. *Spelobia* (*S.*) *quaesita* spec. nov. (♂, paratype). 555 – *S5*; 556 – telomere; 557 – aedeagal complex laterally (only left postgonite figured). Scales: Fig. 555 = 0.2 mm, Fig. 556 = 0.05 mm, Fig. 557 = 0.1 mm.

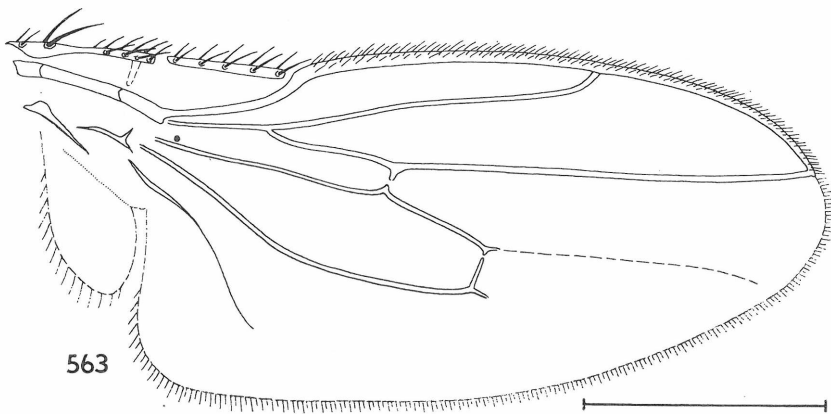
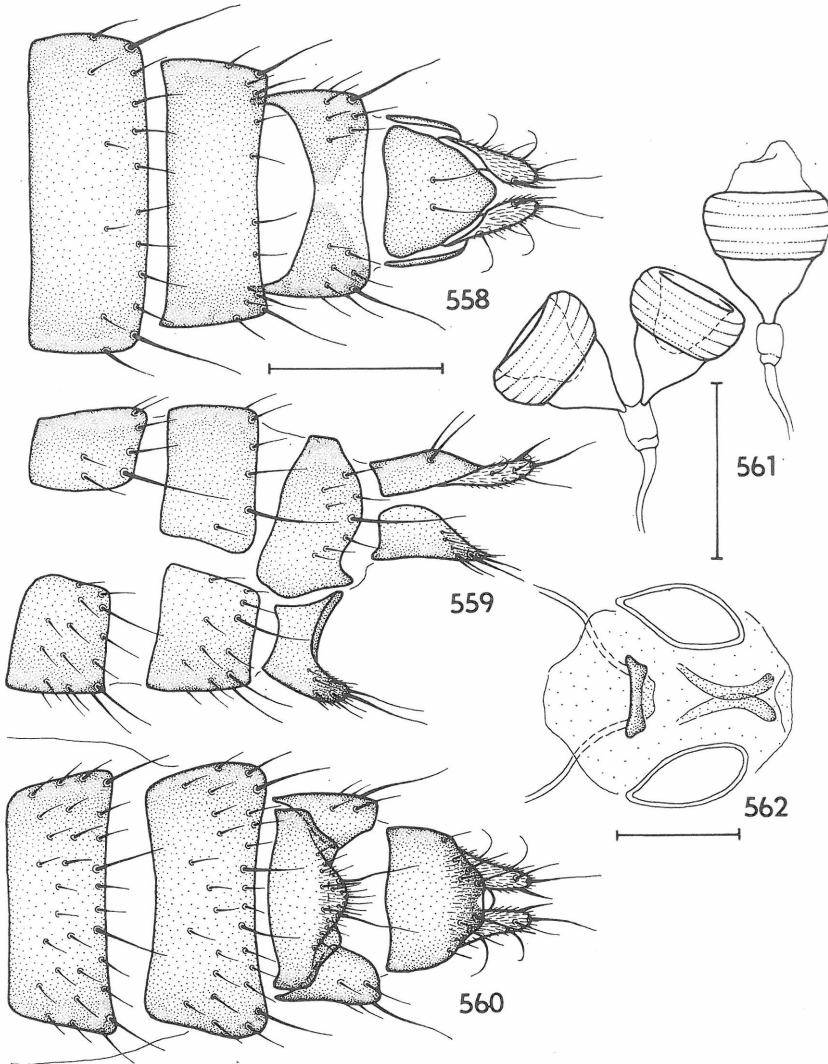
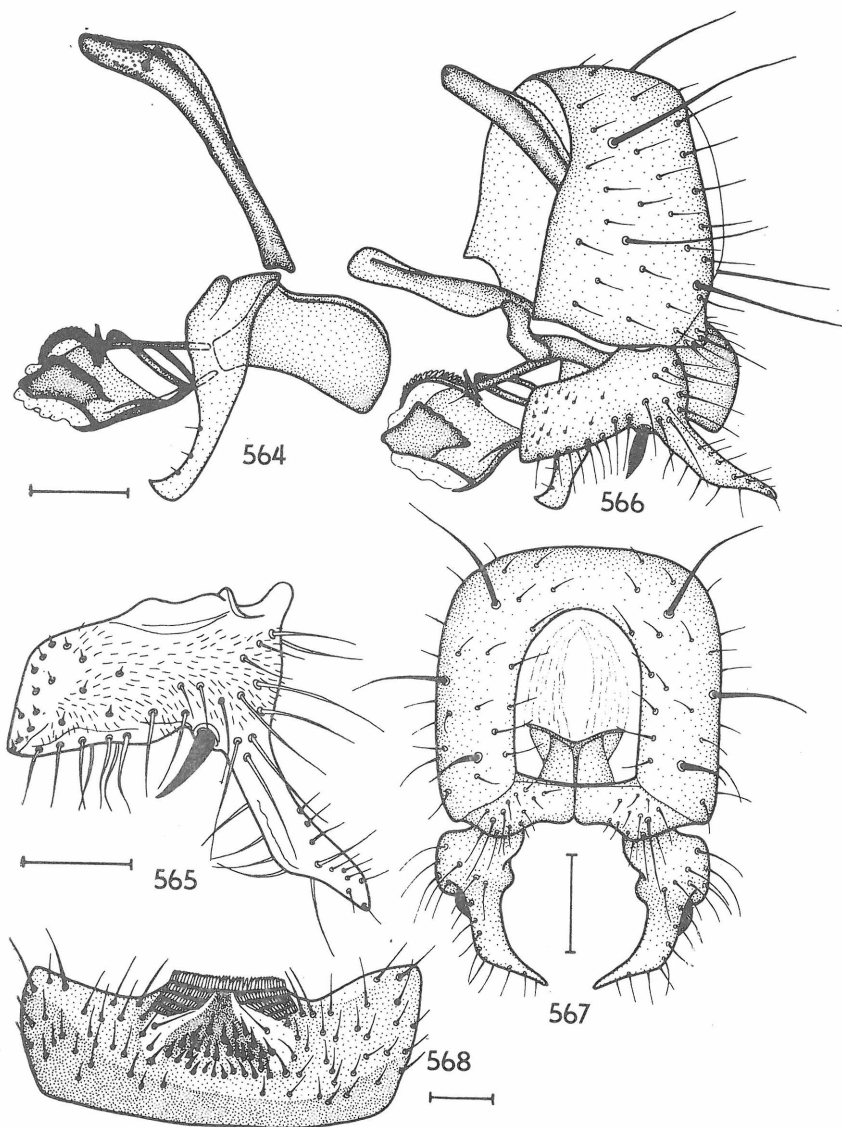


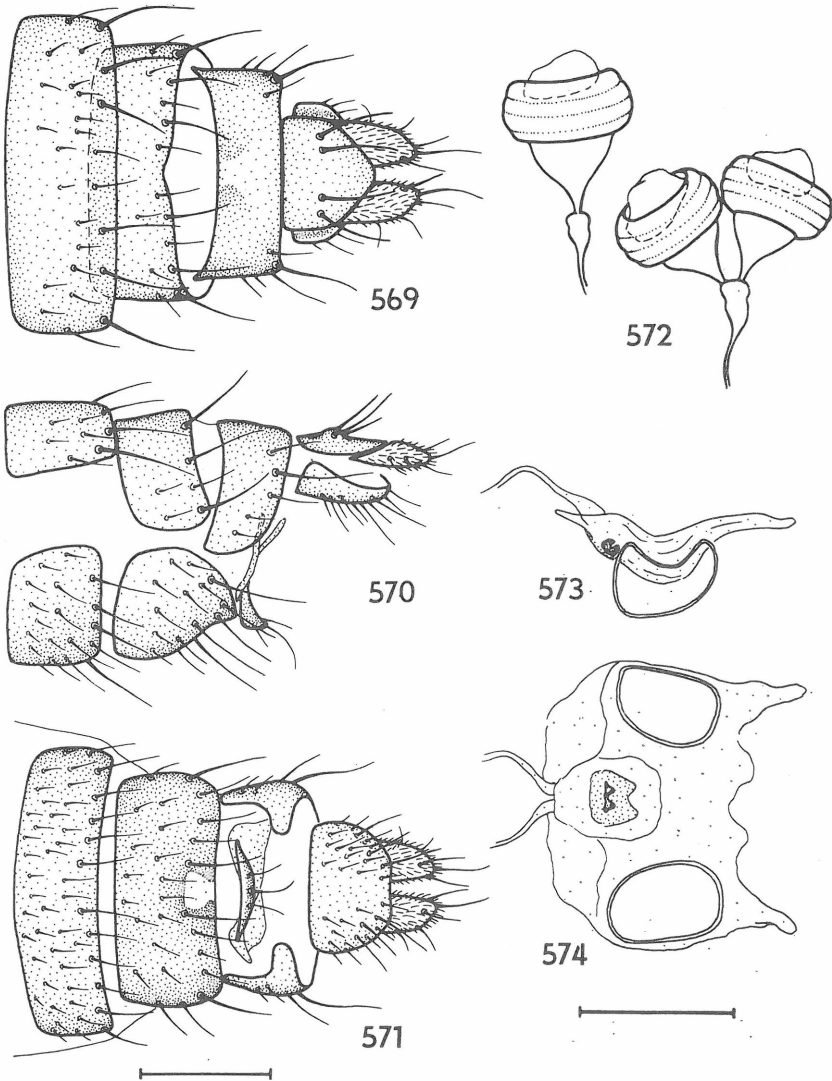
Fig. 563. *Spelobia* (*S.*) *simplicipes* (DUDA) (♂, Czechoslovakia), wing. Scale = 0.5 mm.



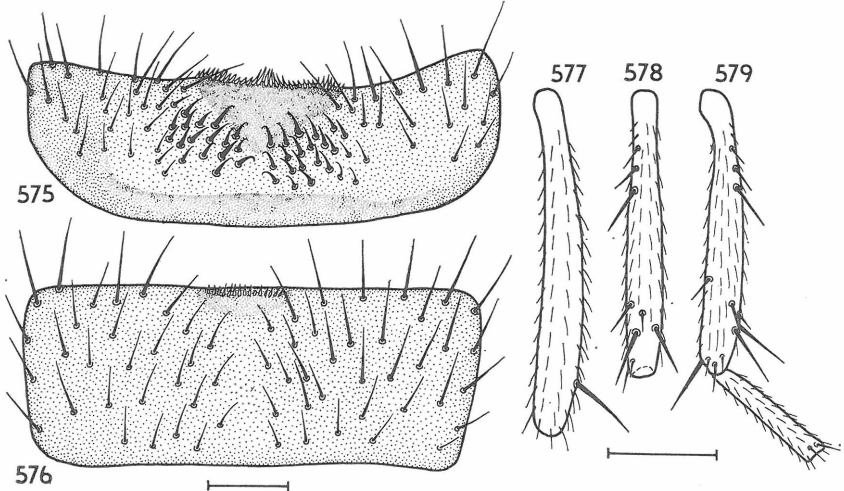
Figs. 558–562. *Spelobia (S.) quaesita* spec. nov. (♀, paratype). 558 – postabdomen dorsally; 559 – dtto laterally; 560 – dtto ventrally; 561 – spermathecae; 562 – spectacles-shaped sclerite ventrally. Scales: Figs. 558–560 = 0.2 mm, Figs. 561, 562 = 0.1 mm.



Figs. 564–568. *Spelobia* (*S.*) *simplicipes* (DUDA). 564 – aedeagal complex laterally (only left postgonite figured); 565 – telomere; 566 – male genitalia laterally; 567 – dtto caudally (aedeagal complex omitted); 568 – male *S5*. Figs. 564, 565, 568 based on specimen from Czechoslovakia, Figs. 566, 567 on specimen from FRG. Scales: Figs. 564, 566–568 = 0.1 mm, Fig. 565 = 0.05 mm.



Figs. 569–574. *Spelobia (S.) simplicipes* (DUDA) (♀, Hungary). 569 – postabdomen dorsally; 570 – dtto laterally; 571 – dtto ventrally; 572 – spermathecae; 573 – spectacles-shaped sclerite laterally; 574 – dtto ventrally. Scales: Figs. 569–571 = 0.2 mm, Figs. 572–574 = 0.1 mm.



Figs. 575–579. *Spelobia* (*S.*) *pseudosetaria* (DUDA). 575 – male *S*<sub>5</sub>; 576 – male *S*<sub>4</sub>; 577 – *t*<sub>3</sub> anteriorly (all based on holotype); 578 – *t*<sub>2</sub> dorsally; 579 – *t*<sub>2</sub> and *mt*<sub>2</sub> anteriorly (both based on ♂ from Czechoslovakia). Scales: Figs. 575, 576 = 0.1 mm, Figs. 577–579 = 0.2 mm.

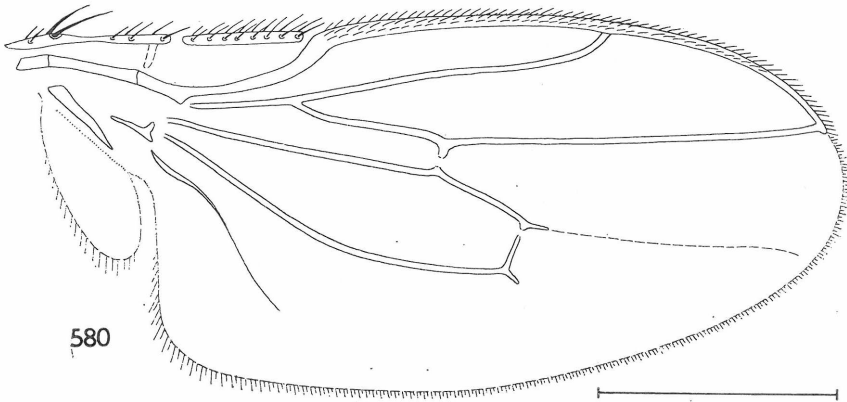


Fig. 580. *Spelobia* (*S.*) *pseudosetaria* (DUDA) (♂, Czechoslovakia), wing. Scale = 0.5 mm.

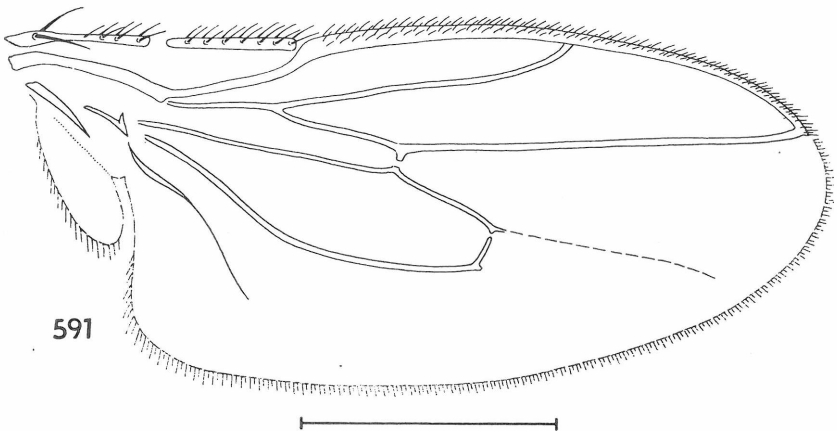
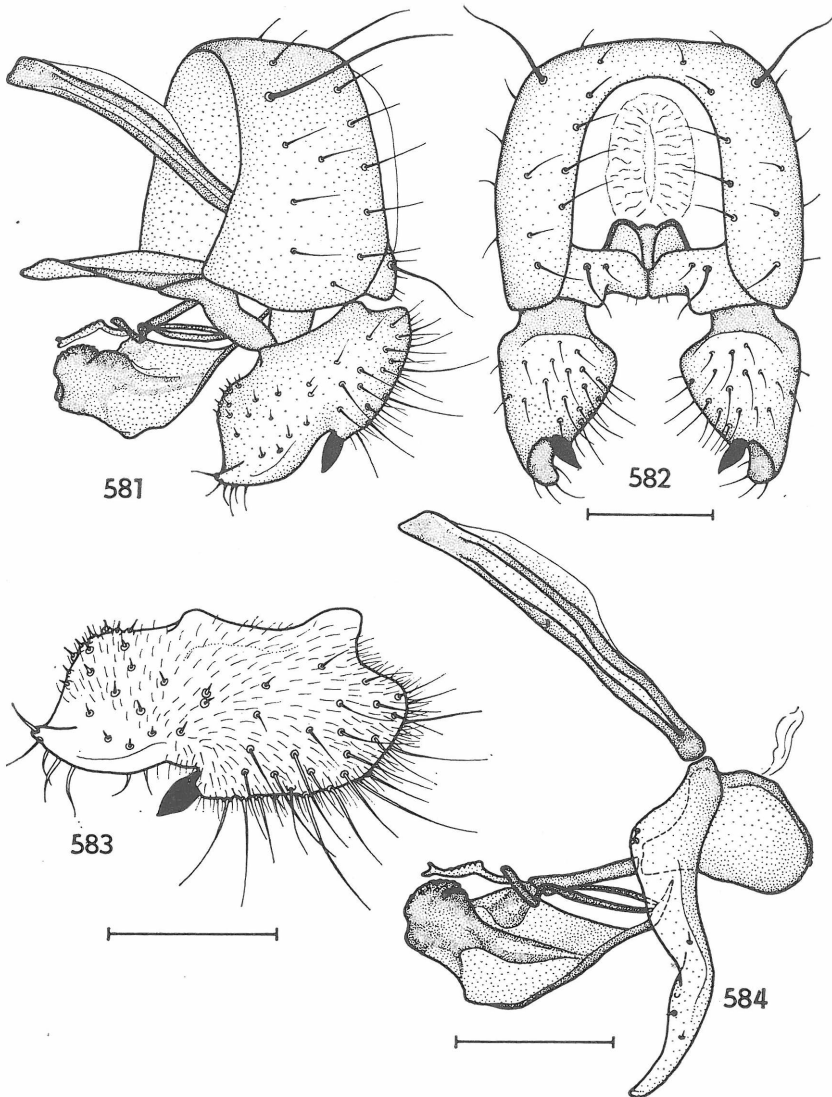
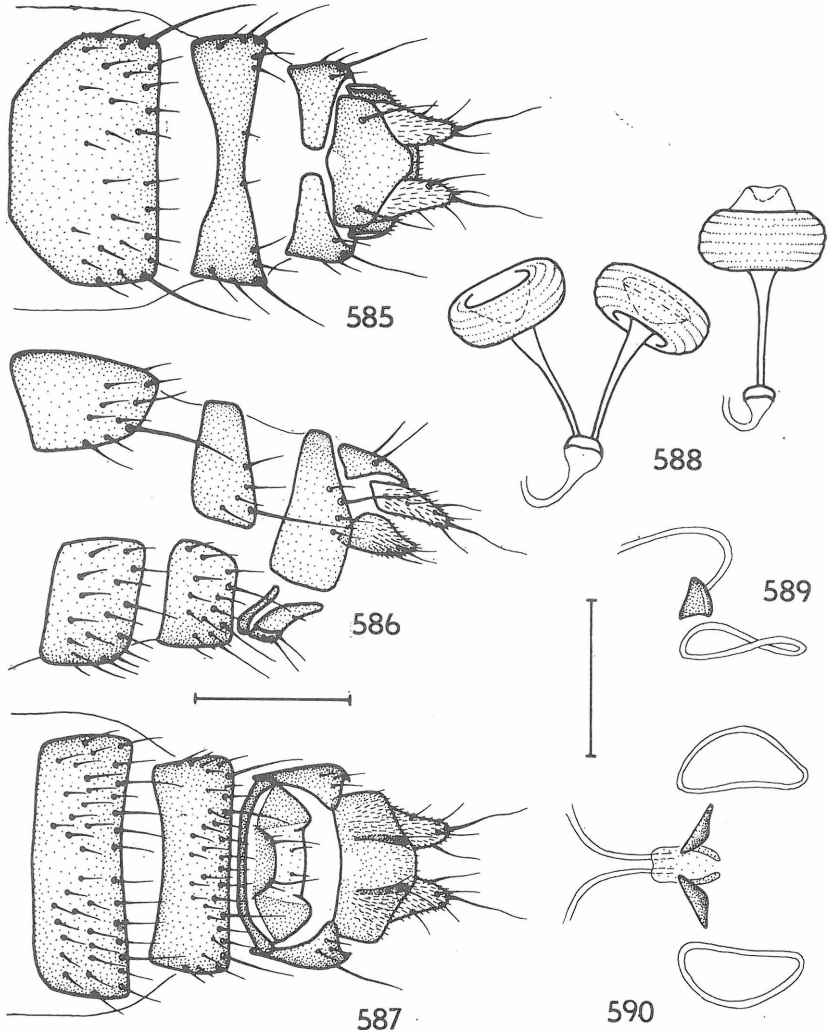


Fig. 591. *Spelobia* (*S.*) *rufilabris* (STENHAMMAR) (♀, Czechoslovakia), wing. Scale = 0.5 mm.

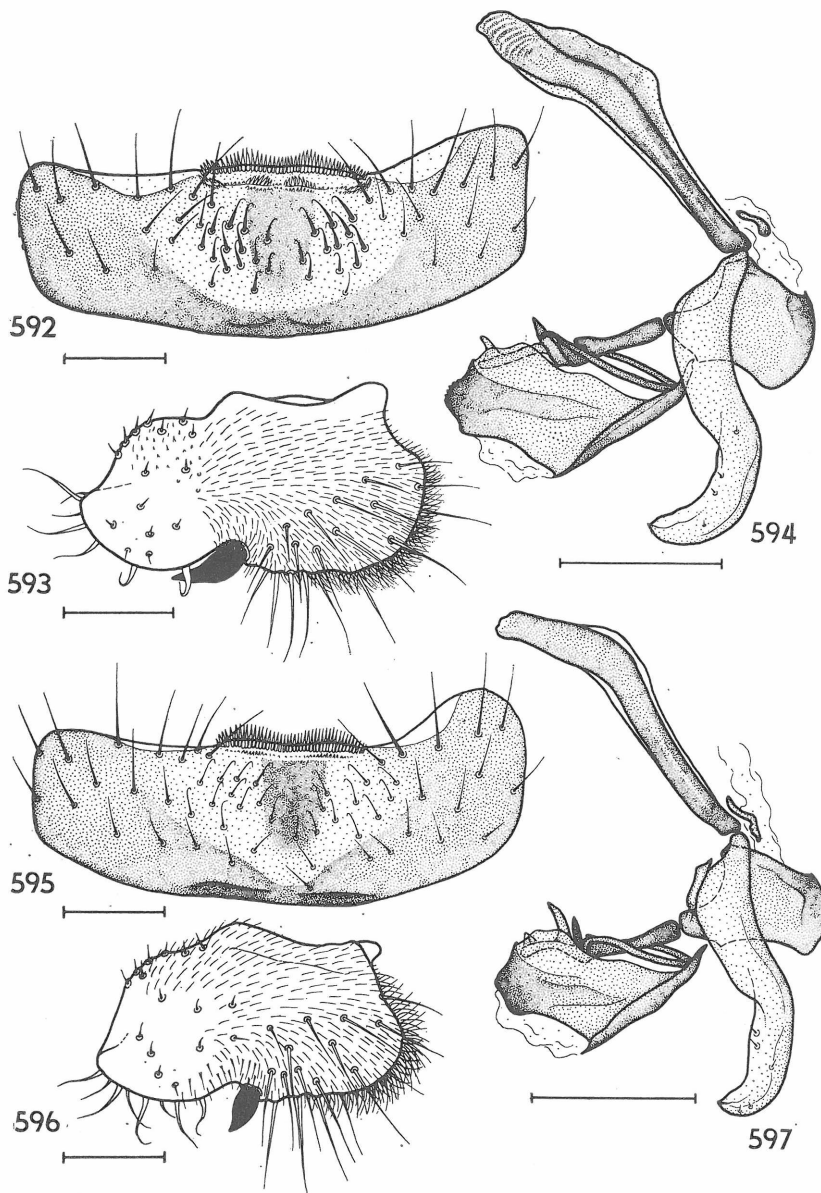




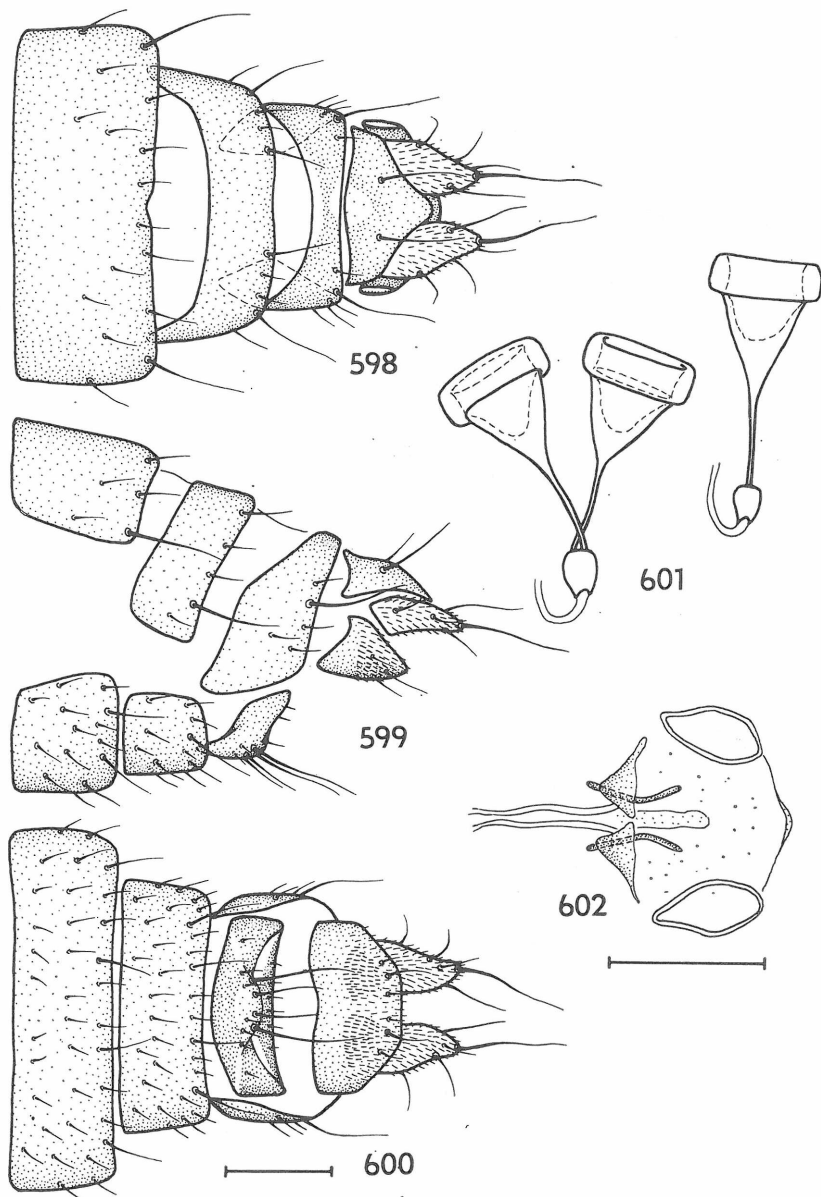
Figs. 581–584. *Spelobia* (*S.*) *pseudosetaria* (DUDA) (♂, holotype). 581 – genitalia laterally; 582 – ditto caudally (aedeagal complex omitted); 583 – telomere; 584 – aedeagal complex laterally (only left postgonite figured). Scales: Figs. 581, 582, 584 = 0.1 mm, Fig. 583 = 0.05 mm.



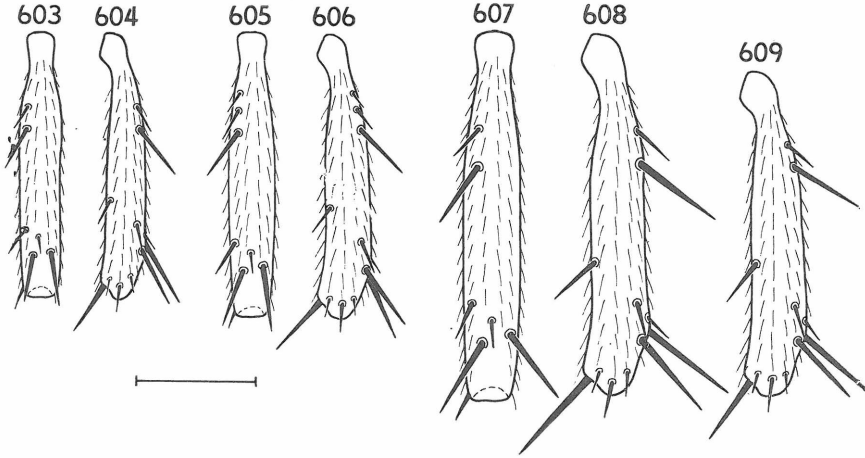
Figs. 585–590. *Spelobia* (*S.*) *pseudosetaria* (DUDA) (♀, Czechoslovakia). 585 – postabdomen dorsally; 586 – dtto laterally; 587 – dtto ventrally; 588 – spermathecae; 589 – spectacles-shaped sclerite laterally; 590 – dtto ventrally. Scales: Figs. 585–587 = 0.2 mm, Figs. 588–590 = 0.1 mm.



Figs. 592–597. Figs. 592–594. *Spelobia (S.) rufilabris* (STENHAMMAR) (♂, paralectotype). 592 – S5; 593 – telomere; 594 – aedeagal complex laterally (only left postgonite figured); Figs. 595–597. *Spelobia (S.) ibrida* spec. nov. (♂, paratype). 595 – S5; 596 – telomere; 597 – aedeagal complex laterally (only left postgonite figured). Scales: Figs. 592, 594, 595, 597 = 0.1 mm, Figs. 593, 596 = 0.05 mm.



Figs. 598–602. *Spelobia* (*S.*) *rufilabris* (STENHAMMAR) (♀, Austria). 598 – postabdomen dorsally; 599 – dtto laterally; 600 – dtto ventrally; 601 – spermathecae; 602 – spectacles-shaped sclerite ventrally. Scales = 0.1 mm.



Figs. 603-609. Figs. 603, 604. *Spelobia (S.) rufilabris* (STENHAMMAR) (♂, Czechoslovakia). 603 - t<sub>2</sub> dorsally; 604 - t<sub>2</sub> anteriorly; Figs. 605, 606. *Spelobia (S.) ibrida* spec. nov. (♂, holotype). 605 - t<sub>2</sub> dorsally; 606 - t<sub>2</sub> anteriorly; Figs. 607-609. *Spelobia (S.) luteilabris* (RONDANI) (Czechoslovakia). 607 - female t<sub>2</sub> dorsally; 608 - dtto anteriorly; 609 - male t<sub>2</sub> anteriorly. Scale = 0.2 mm.

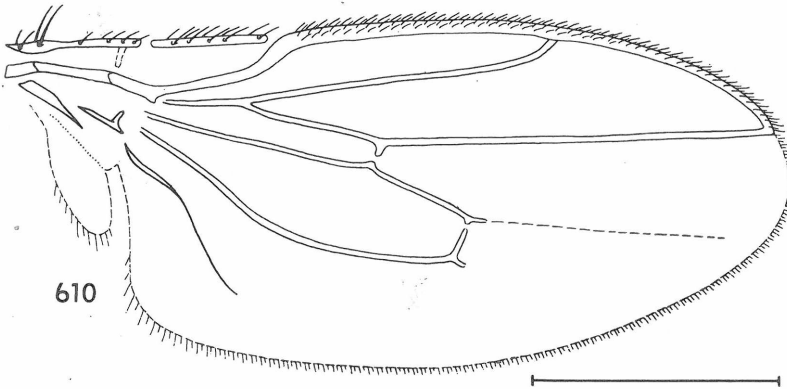


Fig. 610. *Spelobia (S.) ibrida* spec. nov. (♂ paratype, Czechoslovakia), wing. Scale = 0.5 mm.

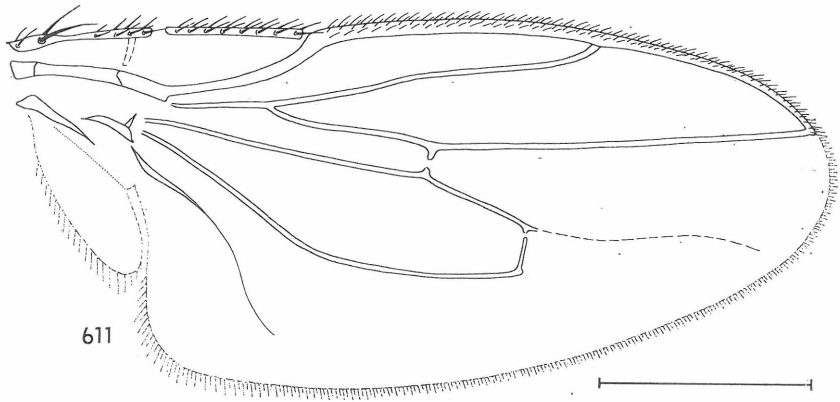
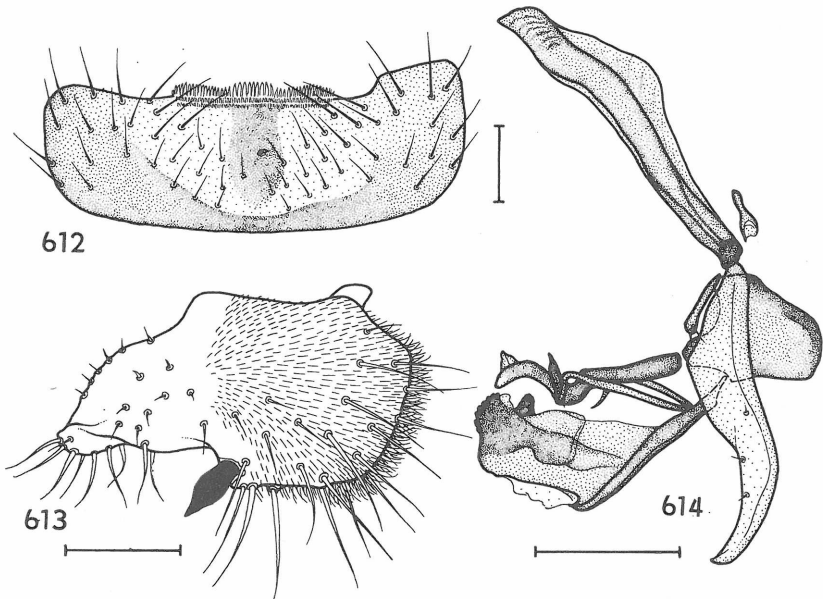
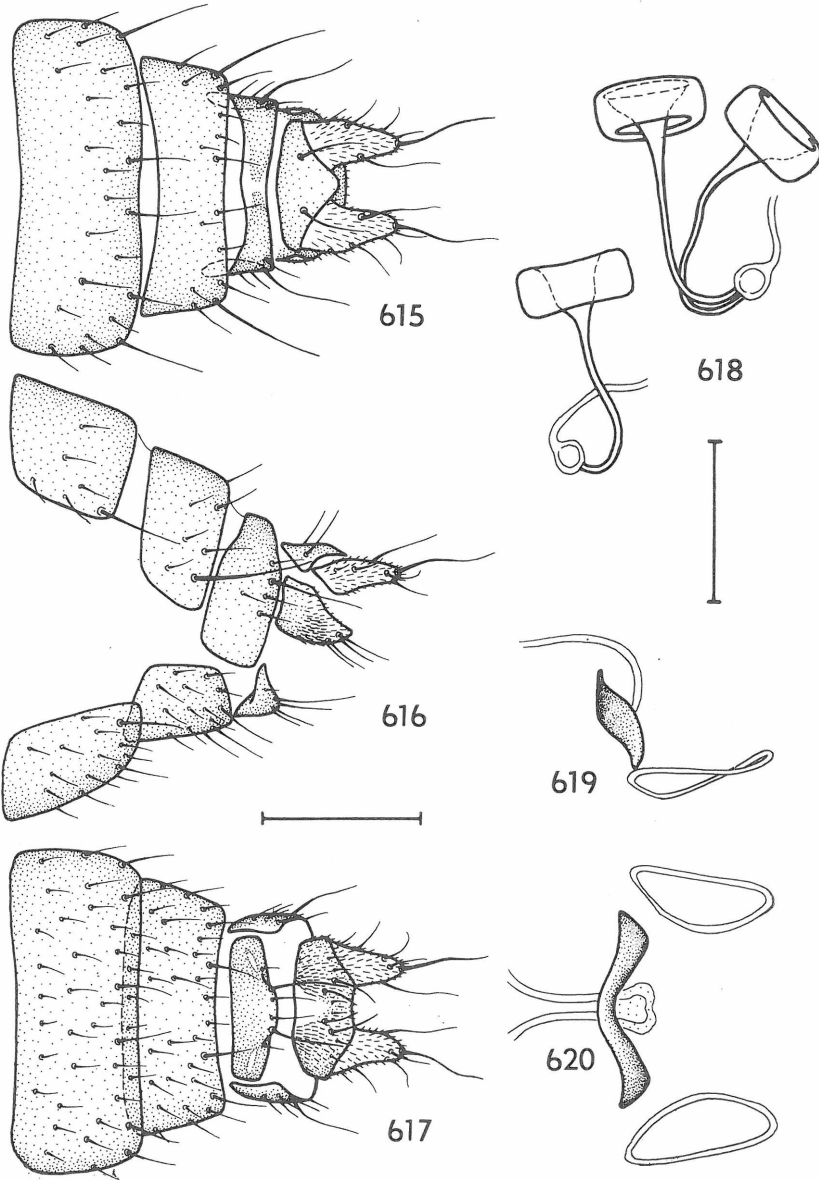


Fig. 611. *Spelobia* (*S.*) *luteilabris* (RONDANI) (♀, Czechoslovakia), wing. Scale = 0.5 mm.



Figs. 612–614. *Spelobia* (*S.*) *luteilabris* (RONDANI) (♂, Czechoslovakia). 612 – S5; 613 – telomere; 614 – aedeagal complex laterally (only left postgonite figured). Scales: Figs. 612, 614 = 0.1 mm, Fig. 613 = 0.05 mm.



Figs. 615–620. *Spelobia (S.) luteilabris* (RONDANI) (♀, Czechoslovakia). 615 – postabdomen dorsally; 616 – dtdo laterally; 617 – dtdo ventrally; 618 – spermathecae; 619 – spectacles-shaped sclerite laterally; 620 – dtdo ventrally. Scales: Figs. 615–617 = 0.2 mm, Figs. 618–620 = 0.1 mm.

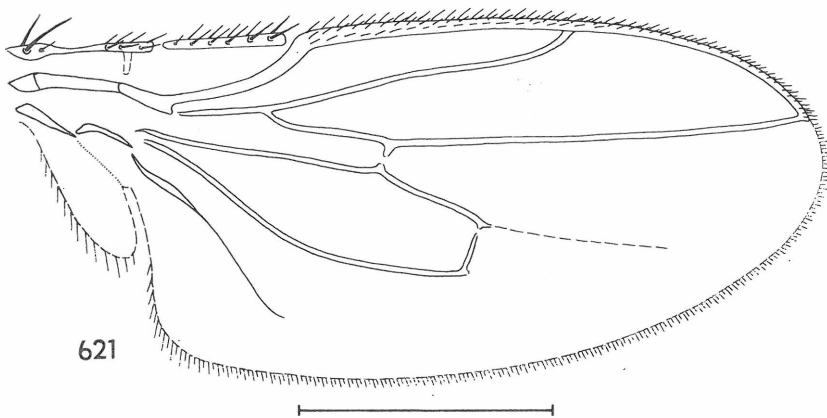
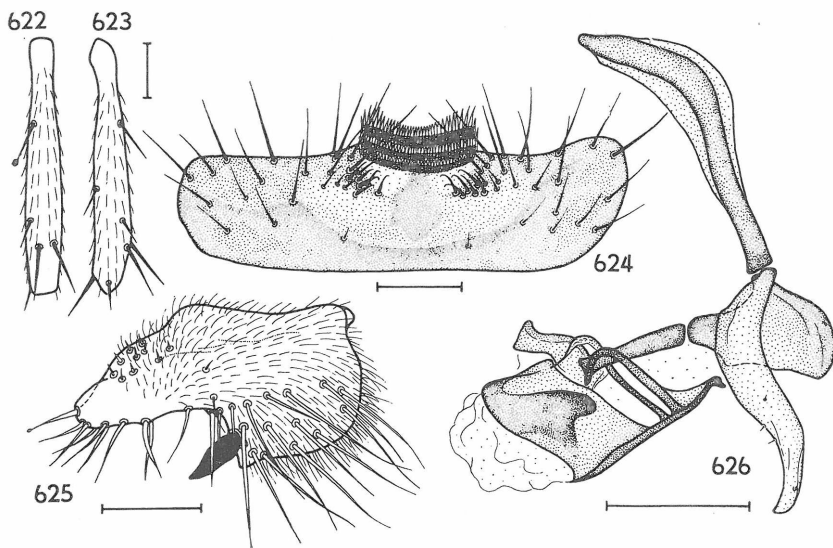
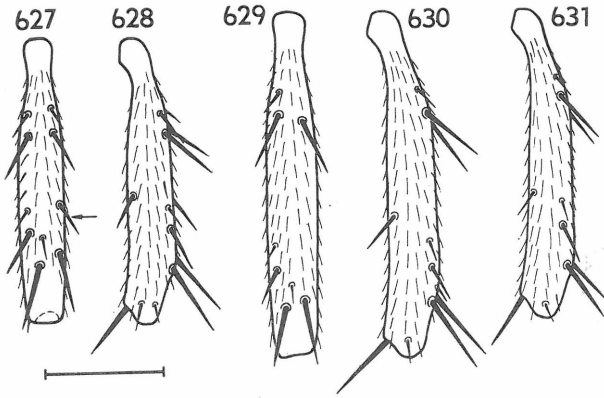


Fig. 621. *Spelobia* (*S.*) *ulla* spec. nov. (♂, holotype), wing. Scale = 0.5 mm.



Figs. 622–626. *Spelobia* (*S.*) *ulla* spec. nov. (♂, holotype). 622 –  $t_2$  dorsally; 623 –  $t_2$  anteriorly; 624 –  $S_5$ ; 625 – telomere; 626 – aedeagal complex laterally (only left postgonite figured). Scales: Figs. 622–624, 626 = 0.1 mm, Fig. 625 = 0.05 mm.





Figs. 627-631. Figs. 627, 628. *Spelobia (S.) nana* (RONDANI) (♂, Czechoslovakia). 627 -  $t_2$  dorsally; 628 -  $t_2$  anteriorly. Figs. 629-631. *Spelobia (S.) parapusio* (DAHL). 629 - female  $t_2$  dorsally; 630 - ditto anteriorly (Czechoslovakia); 631 - male  $t_2$  anteriorly (Bulgaria). Scale = 0.2 mm. Arrow indicate  $pd$  in the middle of  $t_2$ .

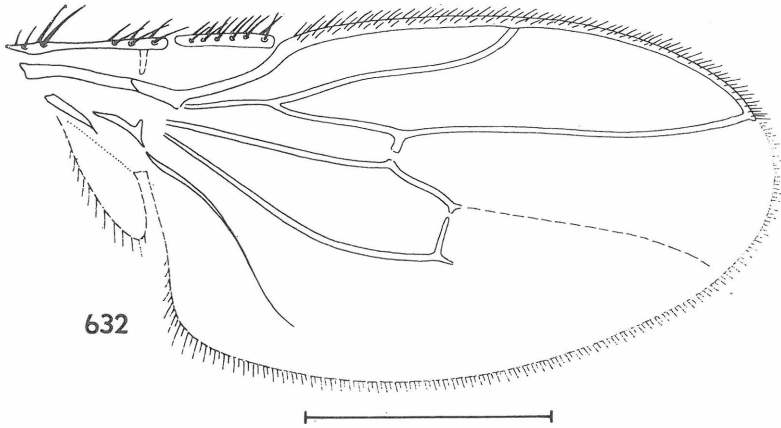


Fig. 632. *Spelobia (S.) nana* (RONDANI) (♂, Czechoslovakia), wing. Scale = 0.5 mm.

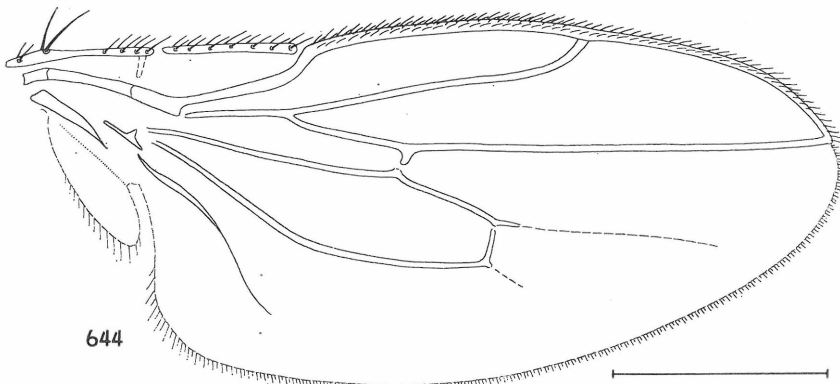
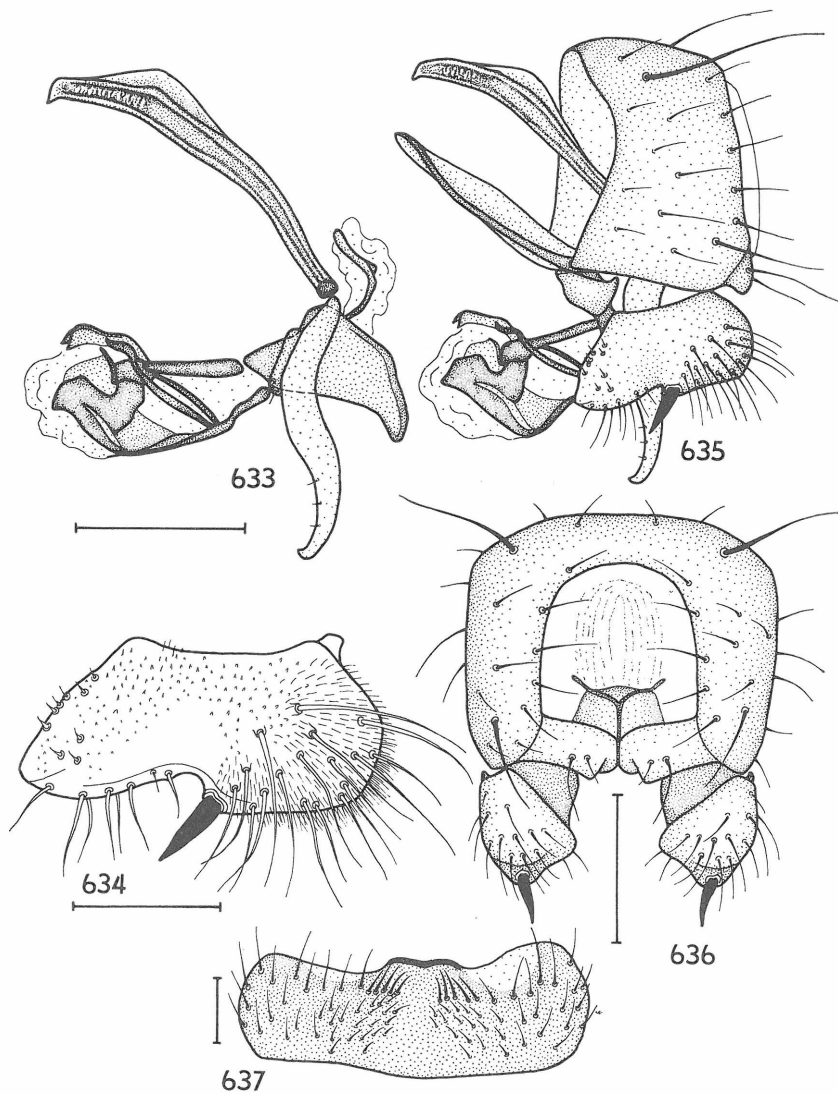
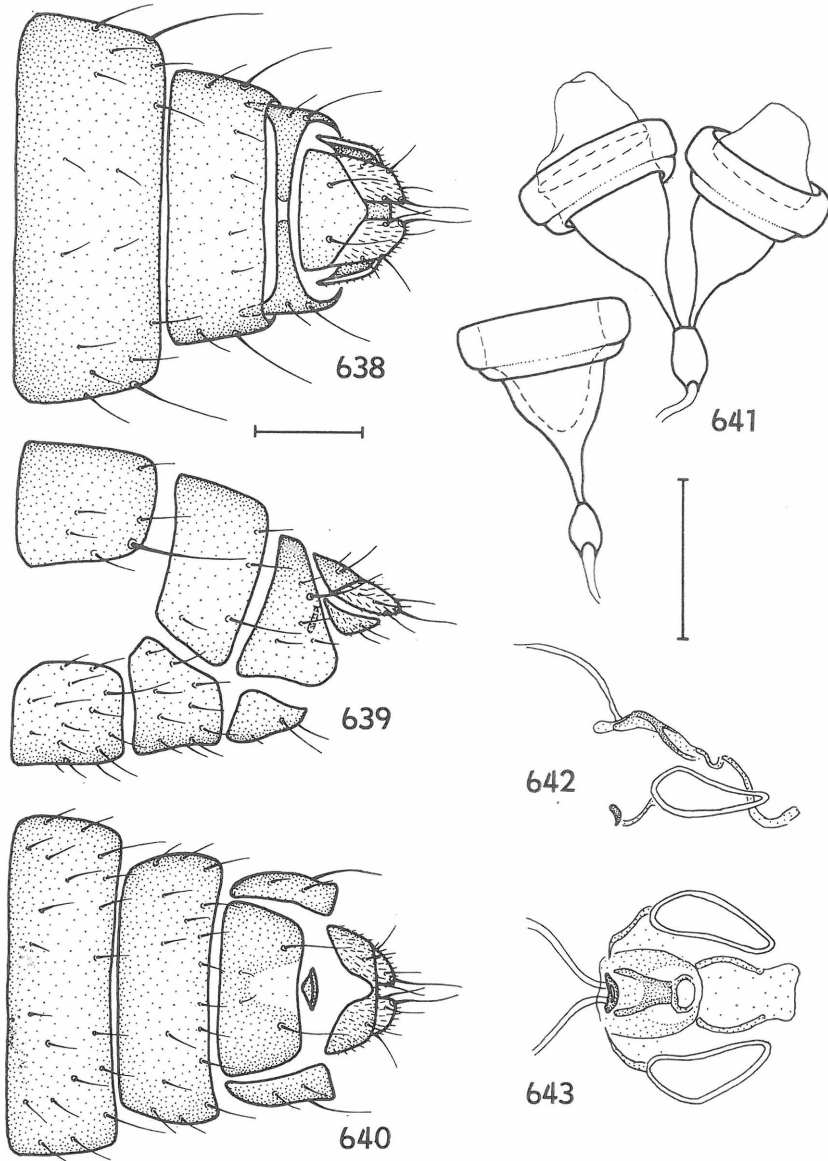


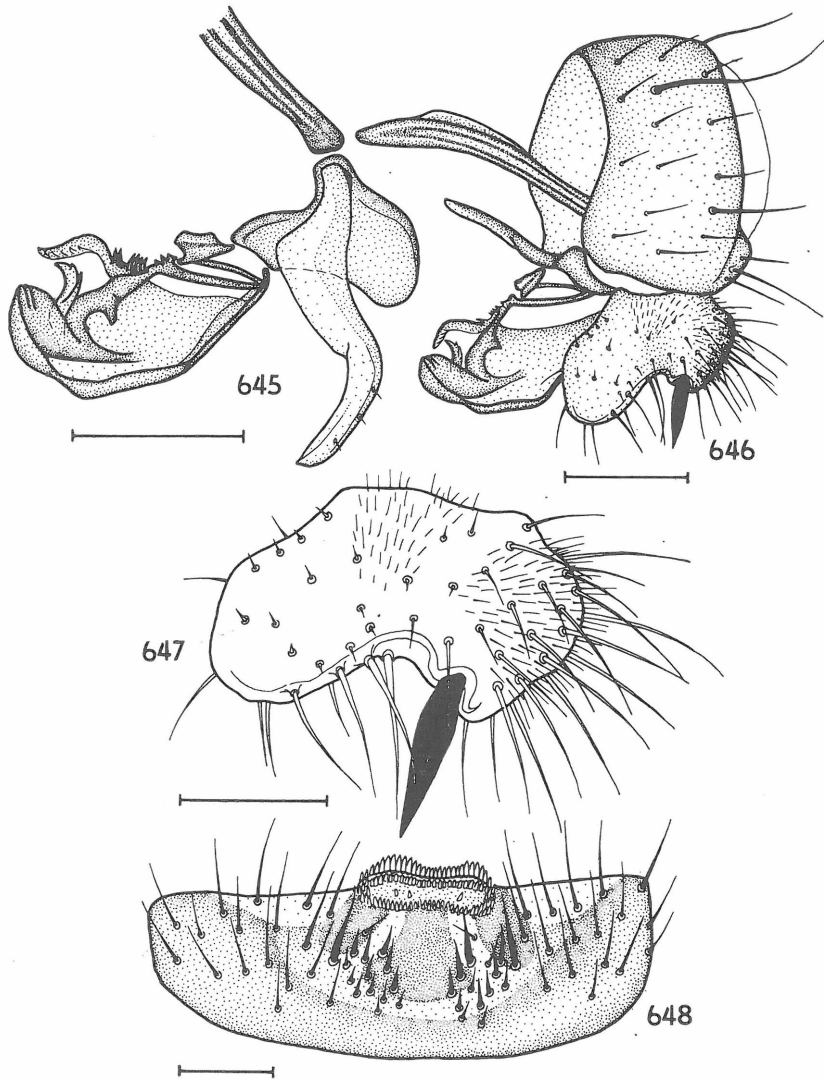
Fig. 644. *Spelobia (S.) parapusio* (DAHL) (♀, Czechoslovakia), wing. Scale = 0.5 mm.



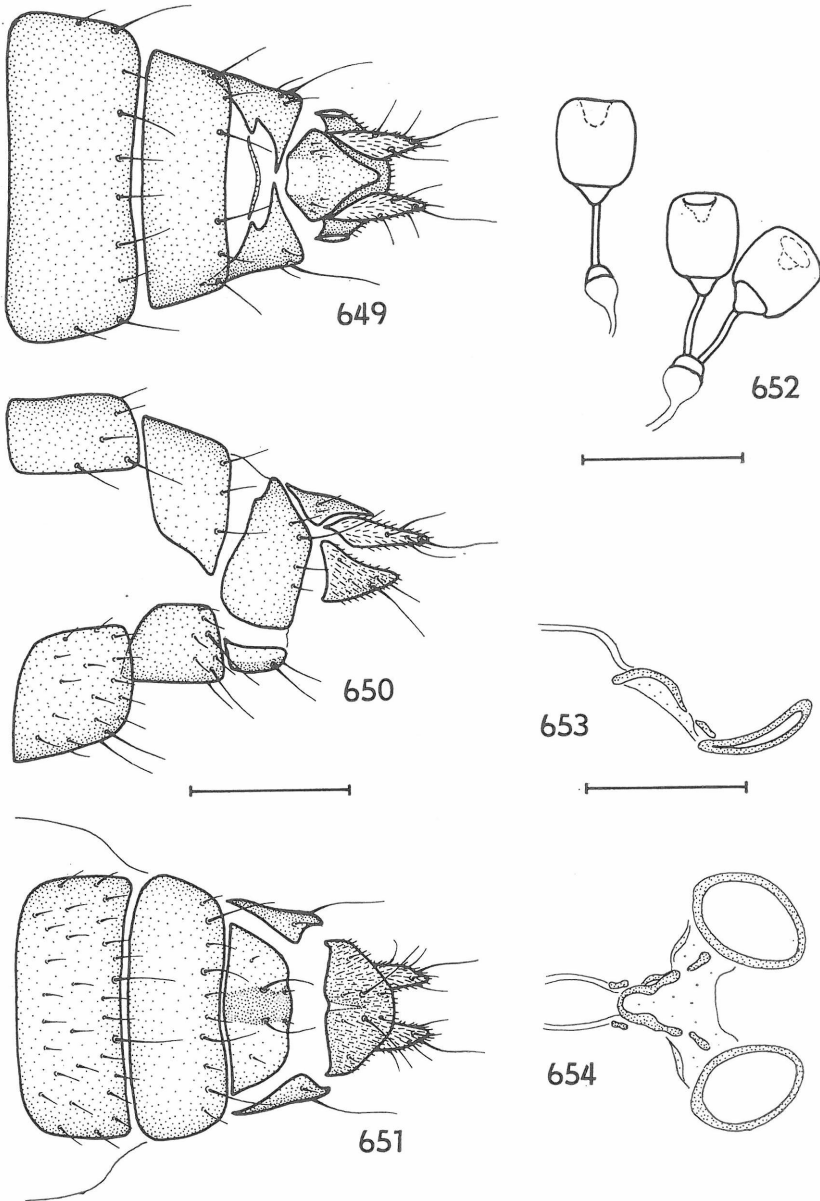
Figs. 633–637. *Spelobia* (*S.*) *nana* (RONDANI) (♂, Czechoslovakia). 633 – aedeagal complex laterally (only left postgonite figured); 634 – telomere; 635 – genitalia laterally; 636 – dtto caudally (aedeagal complex omitted); 637 – *Ss*. Scales: Figs. 633, 635–637 = 0.1 mm, Fig. 634 = 0.05 mm.



Figs. 638–643. *Spelobia (S.) nana* (RONDANI) (♀, Czechoslovakia). 638 – postabdomen dorsally; 639 – ditto laterally; 640 – ditto ventrally; 641 – spermathecae; 642 – spectacles-shaped sclerite laterally; 643 – ditto ventrally. Scales = 0.1 mm.



Figs. 645–648. *Spelobia* (*S.*) *parapusio* (DAHL) (♂, Belgium). 645 – aedeagal complex laterally (right postgonite and terminal part of aedeagal apodeme omitted); 646 – genitalia laterally; 647 – telomere; 648 – S5. Scales: Figs. 645, 646, 648 = 0.1 mm, Fig. 647 = 0.05 mm.



Figs. 649–654. *Spelobia (S.) parapusio* (DAHL) (♀, Czechoslovakia). 649 – postabdomen dorsally; 650 – ditto laterally; 651 – ditto ventrally; 652 – spermathecae; 653 – spectacles-shaped sclerite laterally; 654 – ditto ventrally. Scales: Figs. 649–651 = 0.2 mm, Figs. 652–654 = 0.1 mm.

# ZOBODAT - [www.zobodat.at](http://www.zobodat.at)

Zoologisch-Botanische Datenbank/Zoological-Botanical Database

Digitale Literatur/Digital Literature

Zeitschrift/Journal: [Beiträge zur Entomologie = Contributions to Entomology](#)

Jahr/Year: 1983

Band/Volume: [33](#)

Autor(en)/Author(s): Roháček Jindrich

Artikel/Article: [A monograph and re-classification of the previous genus \*Limosina\* Macquart \(Diptera, Sphaeroceridae\) of Europe. Part III. 203-255](#)