

Beitr. Ent.	Keltern	ISSN 0005 - 805X
56 (2006) 1	S. 155 - 160	15.08.2006

A new species and new records of *Amaurodera* FAUVEL from Nepal

(Coleoptera: Staphylinidae, Aleocharini)

With 10 figures and 2 maps

VOLKER ASSING

Summary

Amaurodera kleebergi sp. n. (eastern Nepal: Rolwaling Himal), the 16th Himalayan representative of the genus, is described, illustrated, and distinguished from the similar *A. granata* ASSING. Additional records of four species are reported from Nepal. Updated distribution maps are provided for *A. bomfordi* (EPPELSHEIM) and *A. soror* CAMERON.

Zusammenfassung

Amaurodera kleebergi sp. n. (Ostnepal: Rolwaling Himal), die 16. Art der Gattung im Himalaja, wird beschrieben und von der ähnlichen *A. granata* ASSING unterschieden; Habitus und wesentliche Differentialmerkmale werden abgebildet. Für vier Arten werden weitere Nachweise aus Nepal gemeldet. Für *A. bomfordi* (EPPELSHEIM) und *A. soror* CAMERON werden aktualisierte Verbreitungskarten erstellt.

Keywords

Coleoptera - Staphylinidae - Aleocharinae - Lomechusini - *Amaurodera* - Himalaya - Nepal - taxonomy
- new species - distribution

Introduction

The genus *Amaurodera* FAUVEL, 1905 of the Lomechusini currently includes some 30 species and is distributed in the Eastern Palaearctic and Oriental regions. Of the 17 Eastern Palaearctic species, two were reported from China (Yunnan) (PACE 1998a, b) and 15 species had become known from the Himalaya range. Based on their external and sexual characters, the Himalayan representatives form three species groups: the *veluticollis* group (three species), the *bomfordi* group (eight species), and the *silvana* group (four species) (ASSING 2003, 2005).

Recently examined material of *Amaurodera* from Nepal not only yielded various additional records of *Amaurodera*, but also included an undescribed species of the *silvana* group from the Rolwaling Himal, a poorly studied region in eastern Nepal.

Material and methods

The material treated below is deposited in the following public and private collections.

SNSD	Staatliche Naturhistorische Sammlungen [previously Staatliches Museum für Tierkunde], Dresden (O. Jäger)
cAss	author's private collection
cHir	private collection G. Hirthe, Rostock
cKle	private collection A. Kleeberg, Berlin

Head length was measured from the anterior margin of the clypeus to the posterior constriction of the head, elytral length from the apex of the scutellum to the posterior elytral margin.

The maps were generated using the online generic mapping tool (GMT) of the Geomar website at www.aquarius.geomar.de/omc.

Species description and additional records

Amaurodera silvana PACE

Additional material examined: Nepal: 22 exs., Annapurna region, Marsyandi Khola Valley, Temang - Thanchauk, E Temang, 2500-2700 m, 18.IV.1999, leg. Hirthe & Krüger (cHir, cAss); 15 exs., SW-Dhaulagiri, Rahughat Khola valley, above Dwari, SW Lete pass, 28°34'N, 83°32'E, 2500 m, 12.V.2002, leg. Jäger (SNSD, cAss); 1 ex., SE-Dhaulagiri, 3 km NE Dwari, 28°34'N, 83°32'E, 2200 m, river bank, 11.V.2002, leg. Jäger (SNSD); 3 exs., Dhaulagiri, Baglung Lekh, upper Tara Khola, 2600 m, 18.V.2004, leg. Kleeberg (cAss, cKle); 3 exs., Dhaulagiri, Baglung Lekh, ca. 30 km W Baglung, northern Tara Khola, 2800 m, 20.V.2004, leg. Kleeberg (cKle, cAss); 2 exs., same data, but 2500-2700 m, 18.V.2004 (cKle); 1 ex., Dhaulagiri, Parbat region, Nange Thaty, 2500 m, moss, 28.V.2004, leg. Kleeberg (cKle).

This species has become known only from the Annapurna and the Dhaulagiri ranges, from where it has been recorded repeatedly, occasionally in large numbers.

Amaurodera kleebergi sp. n. (Figs. 1-10)

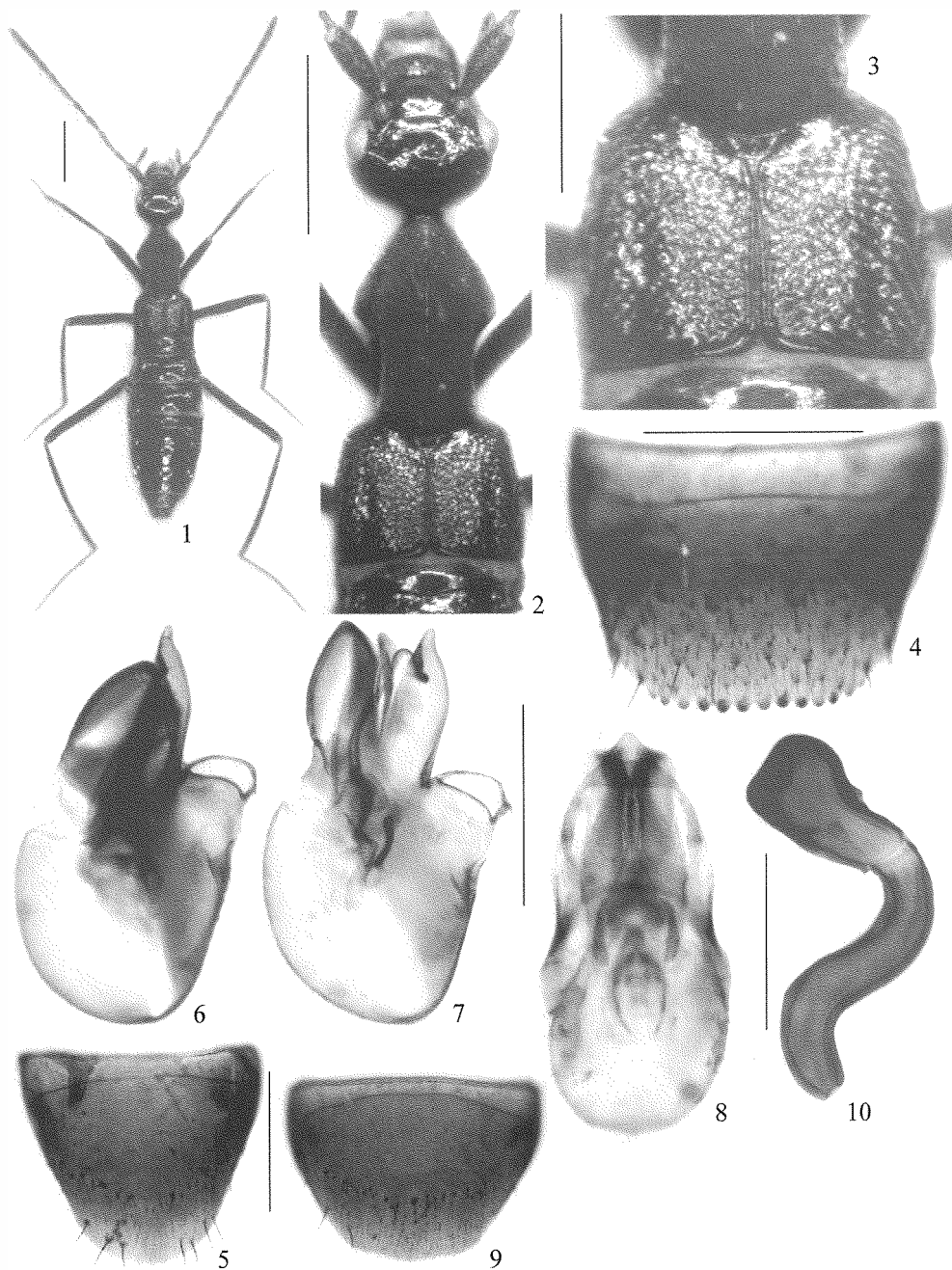
Type material:

Holotype ♂: Ost-Nepal, Rolwaling Himal / oberh. Simigaon, 2700-2800 m, 01.06.2000, leg. A. Kleeberg / Holotypus ♂ *Amaurodera kleebergi* sp. n. det. V. Assing 2006 (cAss). Paratypes: 7 exs.: same data as holotype (cKle, cAss); 1 ex., Nepal, Rolwaling Himal, upper Simigau village, 27-2800 m, 1.6.2000, leg. J. Schmidt (cKle).

Description:

5.5-6.7 mm. Coloration: Body uniformly blackish brown to black, with the tarsi pale brown and often also the apical 1-4 antennomeres paler.

Head as long as wide; eyes of moderate size, distinctly projecting from lateral outline of head and approximately half the length of distance between posterior margin of eye and posterior constriction of head; microsculpture absent; puncturation very fine and very sparse; antennae very long and slender (Figs. 1-2).



Figs. 1-10: *Amaurodera kleebergi* (2, 3, 6: holotype): habitus (1); forebody (2); elytra (3); ♂ tergite VIII (4); ♂ sternite VIII (5); median lobe of aedeagus in lateral and in ventral view (6-8); ♀ sternite VIII (9); spermatheca (10). Scale bars: 1-2: 1.0 mm; 3-9: 0.5 mm; 10: 0.2 mm.

Pronotum without sexual dimorphism; approximately 1.55 times as long as wide, with pronounced microreticulation and matt; median furrow distinct, not reaching anterior and posterior margins (Fig. 2).

Elytra approximately 0.40-0.45 times as long as pronotum; usually with distinct longitudinal impression between suture and lateral margin; puncturation very dense and ill-defined; microsculpture absent (Fig. 3).

Abdomen about 1.20-1.25 times as wide as combined width of elytra; puncturation very sparse and very fine; microsculpture absent; posterior margin of tergite VII with palisade fringe; tergite VIII posteriorly serrate (Fig. 4), without appreciable sexual dimorphism.

♂: sternite VIII weakly transverse, its posterior margin strongly convex (Fig. 5); median lobe of aedeagus as in Figs. 6-8.

♀: sternite VIII strongly transverse; its posterior margin weakly convex (Fig. 9); spermatheca as in Fig. 10.

Etymology: The species is dedicated to Andreas Kleeberg, who collected most of the type specimens.

Comparative notes:

Based on external characters (large body size, dark coloration, long and slender antennae and legs, absence of a sexual dimorphism of the pronotum), and the sexual characters (large and broad aedeagus, S-shaped spermatheca), *A. kleebergi* belongs to the *silvana* species group. In external morphology, it is highly similar to *A. granata* from eastern Nepal (Khandbari, Solukhumbu, and Sankhua Saba Districts). It is distinguished from this species especially by the denser and more ill-defined puncturation of the elytra, by the larger and in ventral view broader median lobe of the aedeagus, by the less slender and differently shaped ventral process of the aedeagus, and by the shorter duct of the spermatheca. For distinguishing characters separating *A. kleebergi* from other Himalayan representatives of the genus see the keys in ASSING (2003, 2005).

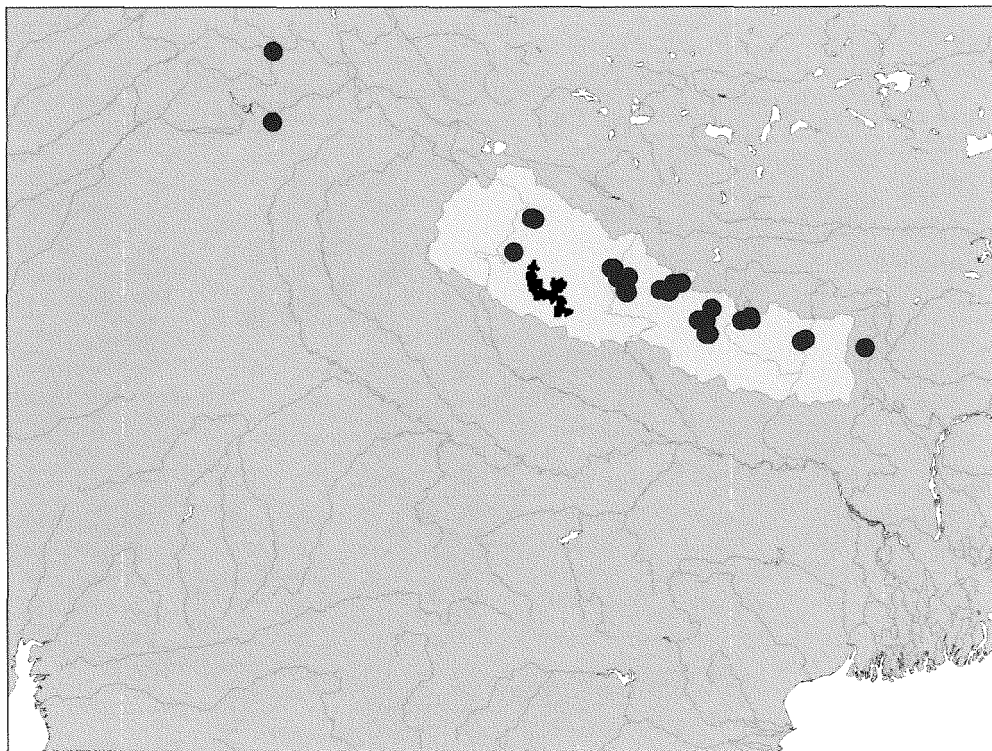
Distribution and bionomics:

The absence of previous records and the restricted distributions of closely related congeners of the *silvana* group suggest that *A. kleebergi* may be an endemic of the Rolwaling Himal. The type specimens were sifted from debris and leaf litter at an altitude of 2700-2800 m.

Amaurodera bomfordi (EPPELSHEIM) (Map 1)

Additional material examined: Nepal: 1 ex., Annapurna region, Khare - Pothana, 1950-2000 m, *Rhododendron* forest, 10.V.2001, leg. Hirthe (cHir); 1 ex., Kali Gandaki valley, bank of Sirkung Khola, 28°40'N, 83°36'E, 2520 m, 27.V.2002, leg. Jäger (SNSD); 5 exs., Rolwaling Himal, Tama Koshi valley, Chet Chet, 1300 m, 3.VI.2000, leg. Schmidt (cKle, cAss); 5 exs., same locality, 1000-1300 m, 15.V.2000, leg. Schmidt (cKle, cAss).

The species is widespread in the Himalaya, from Himachal Pradesh to Sikkim (Map 1).



Map 1: Distribution of *Amaurodera bomfordi* in the Himalaya, based on examined records. The territory of Nepal is highlighted to facilitate geographic recognition.

Amaurodera soror CAMERON (Map 2)

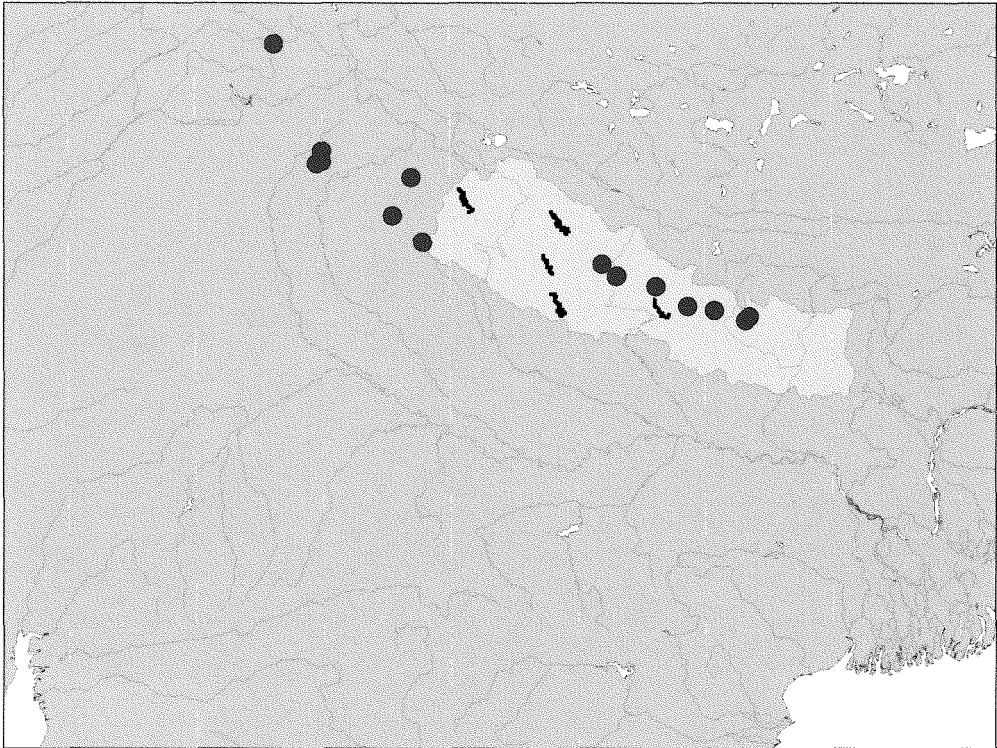
Additional material examined: Nepal: 1 ex., Rolwaling Himal, Tama Koshi valley, Biguthi, 900 m, 13.V.2000, leg. Schmidt (cKle); 8 exs., Rolwaling Himal, Tama Koshi valley, Suri Dhoban, 1200 m, 14.V.2000, leg. Kleeberg (cKle, cAss); 1 ex., Dhaulagiri, Parbat region, near Chitre, 2400-2600 m, leaf litter, 27.V.2004, leg. Kleeberg (Kle).

The previously known distribution of this widespread Himalayan species (see map in ASSING 2003) extended from Himachal Pradesh to central Nepal. The above specimens from the Rolwaling Himal represent the first records from eastern Nepal. The currently known distribution is illustrated in Map 2.

Amaurodera martensi COIFFAIT

Additional material examined: Nepal: 1 ex., Rolwaling Himal, Simigaon - Dugong Kharka, 2100 m, 16.V.2000, leg. Schmidt (cAss).

Amaurodera martensi was previously known only from several localities in central Nepal (ASSING 2005). It is here reported from eastern Nepal for the first time.



Map 2: Distribution of *Amaurodera soror* in the Himalaya, based on examined records. The territory of Nepal is highlighted to facilitate geographic recognition.

Acknowledgements

I am indebted to the colleagues indicated in the material section for the loan of material and, in particular, to Andreas Kleeberg for the generous gift of the holotype of *A. kleebergi*. Andreas Pütz, Eisenhüttenstadt, helped with the identification of some Nepal localities.

References

- ASSING, V. 2003: A review of the Himalayan species of *Amaurodera* (Coleoptera: Staphylinidae: Aleocharinae). – Entomological Problems 33: 5-20.
- ASSING, V. 2005: A review of the Himalayan species of *Amaurodera* (Coleoptera: Staphylinidae: Aleocharinae). II. New species and additional records. – Stuttgarter Beiträge zur Naturkunde, Serie A (Biologie) 680: 1-12.
- PACE, R. 1998a: Aleocharinae della Cina: Parte I (Coleoptera, Staphylinidae). – Revue suisse de Zoologie 105: 139-220.
- PACE, R. 1998b: Aleocharinae della Cina: Parte IV (Coleoptera, Staphylinidae). – Revue suisse de Zoologie 105: 911-982.

Author's address:

Dr. VOLKER ASSING, Gabelsbergerstraße 2
D – 30163 Hannover, Germany
e-mail: vassing.hann@t-online.de

ZOBODAT - www.zobodat.at

Zoologisch-Botanische Datenbank/Zoological-Botanical Database

Digitale Literatur/Digital Literature

Zeitschrift/Journal: [Beiträge zur Entomologie = Contributions to Entomology](#)

Jahr/Year: 2006

Band/Volume: [56](#)

Autor(en)/Author(s): Assing Volker

Artikel/Article: [A new species and new records of Amaurodera Fauvel from Nepal \(Coleoptera: Staphylinidae, Aleocharini\). 155-160](#)