

## A new *Epipsestis* (Lepidoptera, Thyatiridae) and records of some allies from China based on the Höne collection

Hiroshi Yoshimoto

**Abstract.** A new species of the genus *Epipsestis* Matsumura, 1921, *E. stueningi* sp. n. is described from N. Yunnan, China, based on the rich material of the Museum Alexander Koenig, Bonn, brought together by H. Höne. At the same time *Epipsestis albidisca* (Warren, 1888) and *Nothoploca nigripunctata* (Warren, 1915) are first recorded from N. Yunnan. A check list of the species of the genera *Epipsestis* and *Nothoploca* is given.

**Key words.** Lepidoptera, Thyatiridae, *Epipsestis stueningi* sp. n., China.

Through the personal communication with Mr D. Stüning of the Museum Alexander Koenig, Bonn, I learned that three species of "*Polyploca*" (sensu lato) of China are preserved in the Höne collection. Two of them were labelled with unpublished names proposed by H. Sick and the remaining one was left undetermined. After close examination of many specimens of these three species, which Mr Stüning kindly sent me for study, I have come to the conclusion that the first two species are *Epipsestis albidisca* (Warren, 1888) and *Nothoploca nigripunctata* (Warren, 1915), and that the third one represents an undescribed species of *Epipsestis* Matsumura, 1921. Below I will enumerate these species and add a record of another *Epipsestis* from the Höne collection.

### *Epipsestis stueningi* sp. nov. (Figs. 1—2, 4—5)

♂ ♀. Length of forewing 14—17 mm. Expanse 30—35 mm. Similar to a certain form of *E. dubia* (Warren, 1888) (Figs. 3, 6), but the maculation of forewing is very characteristic. Forewing pale whitish gray to brownish gray, with a brown median area; raised-scale tufts on subcosta, in cell, and on cross-vein, usually black, in some specimens represented by yellow, that in cell roundish but sometimes disappearing; subbasal line thick and white, waved; in median area, generally a wide and oblique white band from costa to cell and usually a small white shade above hind margin; postmedian line white, serrate, outsidely edged with black; subterminal line white, zigzag, insidely accompanied with brownish shades between veins 4 and 6, and below vein 3; an apical streak brownish black; terminal line thin and black; cilia pale gray, with a thin brown line in the middle, and sending out in rays with brown beyond each vein. Hindwing pale brownish gray, its outer half darker, with veins faintly stained with brown; cilia nearly as on forewing, but the middle line very obscure.

Male genitalia (Fig. 13). Uncus stout, with a pair of large quadrate lobes on ventral rims; socius short and angulate; tegumen broad; anellus pentagonal, its bottom narrowly extending laterally, densely covered with minute teeth, those near lateral sides strong; valva narrow, sacculus stout and its dorsal margin well sclerotized, arch-

ed, and minutely serrate beyond middle, bearing a stout dent before tip; aedeagus with a curved apical process, vesica bearing a mass of minute spines in regular rows.

Female genitalia (Fig. 15). Papillae anales large, sclerotized region between them trigonal and wide, densely covered with minute spines; ventral membrane of 8th segment widely covered with minute spines at sides before V-shaped lamella antevaginalis; 8th dorsum strongly protrudent caudally and covering papillae anales, and invagination of caudal wall very deep; ductus bursae long and twisted, swollen below ostium; corpus bursae large oval, signum pyriform, lined with minute dents.

Holotype. ♂ (Fig. 1), labelled "Li-kiang ca. 4000 m, Prov. Nord-Yuennan, 18. 9. 1935. H. Höne/Tafel IX, L. R. 3", preserved in the Museum Alexander Koenig, Bonn.

Paratypes. 133 ♂ 49 ♀ from Likiang, N. Yunnan, H. Höne leg. Collecting dates as follows: Li-kiang, ca. 2000 m: 2 ♂, 30. viii. 1935; 86 ♂ 35 ♀, 2–30. ix. 1935; 1 ♂, 3. ix. 1935, slide HY-1446; 1 ♀, 6. ix. 1935, slide HY-1444; 1 ♂, 9. ix. 1935, slide K. Werny GU: 0211; 1 ♂ 1 ♀, 22. ix. 1935, slides K. Werny GU: 0212 (♂), HY-1447 (♀); 1 ♀, 23. ix. 1935, slide K. Werny GU: 0216; 1 ♂, 25. ix. 1935, slide HY-1442; 1 ♀, 28. ix. 1935, slide K. Werny GU: 0351; 10 ♂ 2 ♀, 1–19. x. 1935.

Ditto, ca. 3000 m: 7 ♂, 1–30. ix. 1935; 1 ♀, 19. ix. 1935; 1 ♂, 23. x. 1935, slide HY-1443.

Ditto, ca. 4000 m: 1 ♂, 22. viii. 1935; 22 ♂ 7 ♀, 3–29. ix. 1935.

The paratypes will be preserved in the Museum Alexander Koenig, Bonn, the British Museum (Nat. Hist.), London, Academia Sinica, Beijing, and my own cabinet.

Remarks. This species is easily distinguished from *E. dubia* (Warren) by a costal oblique white band in the median area of forewing in most cases, but there are a few specimens lacking this white marking. In the genitalia, the present new species differs from *E. dubia* in having a pair of large quadrate lobes on undersurface of uncus and a strong terminal projection on sacculus in the male, and in having a signum on bursa in the female.

In north Yunnan Province, this species seems most dominant among the members of *Epipsestis*, and it is very interesting that the close relative, *E. dubia* (Warren), was not taken in this area, which is a wide spread and the most dominant species from W. Himalaya to Taiwan via N. India (Sikkim, Darjeeling). It is highly probable that *E. stueningi* is a vicarious species of *dubia* in N. Yunnan.

The specific name is dedicated to Mr Dieter Stüning, who kindly informed me on this interesting insect and sent me the above-mentioned specimens.

### *Epipsestis albidisca* (Warren, 1888) (Figs. 7–9)

*Polyploca albidisca* Warren, 1888: 299; Butler, 1889: 49, pl. 126: 3.

*Palimpsestis albidisca* Moore, 1888: 408; Warren, 1912: 328, pl. 49: i.

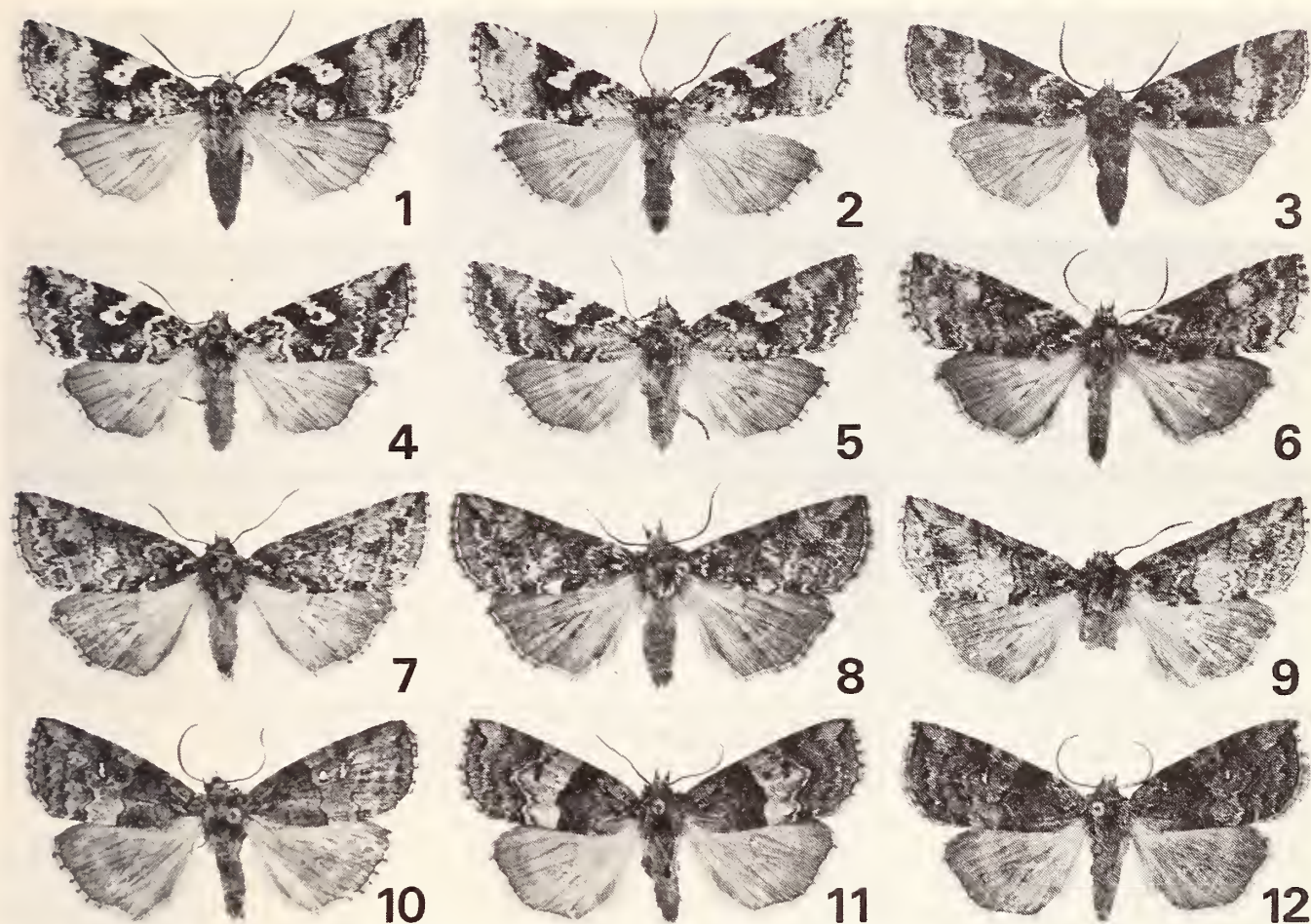
*Epipsestis albidisca*: Yoshimoto, 1982: 126, figs. 7–9, 21, 24, 27, 34, 44.

*Polyploca polychromata* Hampson, 1896: 463.

Specimens examined. Li-kiang, ca. 2000 m: 1 ♂, 4. ix. 1935; 1 ♂, 23. ix. 1935; 2 ♂, 24. ix. 1935 (one labelled "Typus/*Polyploca irregularis* Sick, Det. Herb Sick/*Polyploca irregularis* Sick", the other labelled "Tafel IX, L. R. 1"); 1 ♂, 25. ix. 1935, slide HY-1445; 1 ♂, 26. ix. 1935, slide K. Werny GU: 0162; 2 ♂ 1 ♀, 27. ix. 1935 (1 ♂ labelled "*Polyploca castanea* Warren"); 1 ♂, 28. ix. 1935; 3 ♂ 1 ♀, 29. ix. 1935, slides K. Werny GU: 0170 (♂), 0163 (♀). Ditto, ca. 3000 m: 1 ♀, 17. x. 1935, slide K. Werny GU: 0161.

Ditto, ca. 4000 m: 1 ♂, 24. ix. 1935.

Remarks. "*Polyploca irregularis* Sick", cited above, seems a manuscript name. This species is rather widely distributed from the west Himalaya (Kashmir) to North



Figs. 1–12. *Epipsestis* and *Nothoploca* spp. 1. *E. stueningi* sp. n., ♂, holotype. 2. ditto, ♂, paratype. 3. *E. dubia* (Warren), ♂, Nepal. 4–5. *E. stueningi* sp. n., ♀, paratypes. 6. *E. dubia* (Warren), ♀, Taiwan. 7–9. *E. albidisca* (Warren), ♂, Yunnan. 10–12. *N. n. nigripunctata* (Warren), ♂ (10–11), ♀ (12), Yunnan.

Thailand (unrecorded), of which I have examined one specimen (1 ♂, N. Thailand, Chiang Mai Prov., Doi Inthanon Nat. Park, 2200–2500 m, 22–23. x. 1984, O. Karsholt, O. Lomholdt & P. Nielsen leg.).

### *Epipsestis perornata sicki* Yoshimoto, 1988

*Epipsestis perornata sicki* Yoshimoto, 1988: 85, figs. 4–5, 14.

*Polyploca nigripunctata* Sick, 1941: 5 (preoccupied by Warren, 1915).

Specimens examined. Li-kiang, ca. 1500 m: 1 ♂, lectotype, 11. x. 1935.

Ditto, ca. 2000 m: 1 ♂, paralectotype, 18. x. 1935.

Remarks. The two specimens were already recorded and designated as lecto- and paralectotypes in my 1988 paper. Recently Tshistjakov & Dubatolov (1987) recorded this species from the Primorye district of USSR and figured the moths and male genitalia. According to their figure of genitalia, the Primoryan specimens are safely referred to the nominotypical subspecies of *E. perornata* Inoue, 1972, originally described from Japan.

### *Nothoploca nigripunctata nigripunctata* (Warren, 1915) (Figs. 10–12)

*Polyploca nigripunctata* Warren, 1915: 157.

*Nothoploca nigripunctata*: Yoshimoto, 1983: 127, figs. 1–2, 4–5, 7, 9, 11.

Specimens examined. Li-kiang, ca. 2000 m: 1 ♂, 31. vii. 1935; 1 ♀, 1. ix. 1935, slide K. Werny GU: 0160; 1 ♀, 2. ix. 1935, slide K. Werny GU: 0178; 1 ♂, 3. ix. 1935; 1 ♂ 1 ♀, 5. ix. 1935 (♀ labelled "Tafel IX, R. R. 3"); 1 ♂ 1 ♀, 6. ix. 1935; 2 ♀, 7. ix. 1935 (one labelled "Typus/*Polyploca tripartita* Sick, Det. Herb Sick/*Polyploca tripartita* Sick"); 1 ♂, 9. ix. 1935, slide K. Werny GU: 0259; 2 ♂, 10. ix. 1935; 1 ♂, 12. ix. 1935; 1 ♂ 1 ♀, 14. ix. 1935; 1 ♂, 17. ix. 1935; 1 ♂, 21. ix. 1935; 1 ♂, 24. ix. 1935.

Ditto, ca. 3000 m: 1 ♂, 15. viii. 1935.

A-tun-tse, ca. 4000 m: Yunnan: 1 ♂, 10. viii. 1937.

Remarks. Dubatolov (1987) described a new subspecies, *N. n. zolotarenkoi*, from the Primorye district of USSR. The north Yunnan specimens are here referred to the nominotypical subspecies from N. India (Sikkim), but the median area of forewing of Yunnan specimens is not so whitish as in the nominotypical race, and may be separated from it as a subspecies. The decision is here postponed because of the lack of chance to compare them with *N. n. zolotarenkoi*. "*Polyploca tripartita* Sick", cited above, is considered a manuscript name.

By this opportunity, I give a check list of *Epipsestis* Matsumura, 1921, and *Nothoploca* Yoshimoto, 1983.

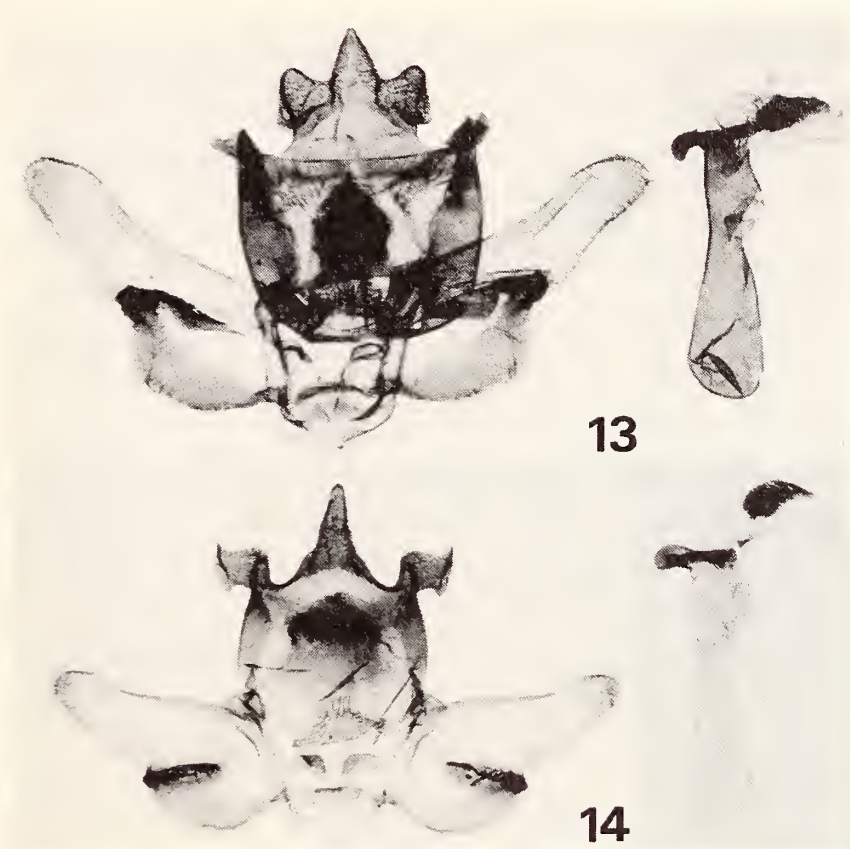
*Epipsestis* Matsumura, 1921: 858

Type species: *Polyploca ornata* Leech, [1889].

*Neopsestis* Matsumura, 1933: 195. Type species: *Polyploca nikkoensis* Matsumura, 1921.

*Sugiploca* Matsumura, 1933: 198, 199. Type species: *Sugiploca sugitanii* Matsumura, 1933.

1. *E. ornata ornata* (Leech, [1889: 653]).  
*Sugiploca sugitanii* Matsumura, 1933: 198.  
*E. ornata*, f. *unicolor* (Leech, [1889: 653]).  
Range. Japan.
- 1a. *E. ornata obscurata* Tshistjakov in Tshistjakov & Dubatolov, 1987: 135.  
Range. Primorye region of USSR.
2. *E. nikkoensis* (Matsumura, 1921: 856).  
Range. Japan, Taiwan and Nepal.
3. *E. castaneata* (Warren, 1915: 157).  
Range. N. India and Nepal.
4. *E. perornata perornata* Inoue, 1972: 32.  
Range. Japan and Primorye region of USSR.
- 4a. *E. perornata sicki* Yoshimoto, 1988: 85.  
*Polyploca nigropunctata* Sick, 1941: 5.  
Range. S. China (Yunnan), N. India and Nepal.
5. *E. dubia* (Warren, 1888: 300).  
*Polyploca nigrifasciata* Warren, 1915: 158.  
*P. nigrifasciata*, ab. *semifascia* Warren, 1915: 158.  
*P. nigrifasciata*, ab. *nigrilineata* Warren, 1915: 158.  
Range. W. India, N. India, Nepal and Taiwan.
6. *E. stueningi* Yoshimoto, sp. n.  
Range. S. China (Yunnan).
7. *E. albidisca* (Warren, 1888: 299).  
*Palimpsestis albidisca* Moore, 1888: 408.  
*Polyploca polychromata* Hampson, 1896: 463.  
Range. W. India, N. India, S. China (Yunnan) and N. Thailand (unrecorded).



Figs. 13—14. Male genitalia of *Epipsestis* spp. 13. *E. stueningi* sp. n., paratype. 14. *E. dubia* (Warren), Nepal.



Figs. 15—16. Female genitalia of *Epipsestis* spp. 15. *E. stueningi* sp. n., paratype. 16. *E. dubia* (Warren), Nepal.

8. *E. bilineata bilineata* (Warren, 1915: 159).  
*Polyploca acutangula* Warren, 1915: 159.  
Range. N. India and Nepal.
- 8a. *E. bilineata pallida* Yoshimoto, 1984: 34.  
Range. Taiwan.

9. *E. longipennis* Yoshimoto, 1982: 129.  
Range. N. India and Nepal.
10. *E. medialis* Yoshimoto, 1982: 131.  
Range. Nepal.
11. *E. mediofusca* Yoshimoto, 1982: 132.  
Range. Nepal.
12. *E. renalis* (Moore, 1888: 407).  
Range. W. India, Nepal and N. Thailand (unrecorded).

*Nothoploca* Yoshimoto, 1983: 125.

Type species: *Polyploca nigripunctata* Warren, 1915.

1. *N. nigripunctata nigripunctata* (Warren, 1915: 157).  
Range. N. India, Nepal, Bhutan and S. China (Yunnan).
- 1a. *N. nigripunctata zolotarensis* Dubatolov, 1987: 61.  
Range. Primorye region of USSR.
2. *N. endoi* Yoshimoto, 1983: 128.  
Range. Taiwan.

#### Acknowledgments

I am grateful to Mr D. Stüning of the Museum Alexander Koenig, Bonn, for the loan of the material which formed the base of this report. My sincere thanks are also due to Dr. M. Owada of the National Science Museum (Nat. Hist.), Tokyo, who took the photographs used in this paper.

#### Zusammenfassung

Nach Material aus der Höne-Sammlung des Museums Alexander Koenig wird eine neue Art der Gattung *Epipsestis* Matsumura, 1921, beschrieben: *E. stueningi* sp. n. aus N.-Yunnan, China. Die Sammlung enthält weiterhin Erstnachweise der Arten *Epipsestis albidisca* (Warren, 1888) und *Nothoploca nigripunctata* (Warren, 1915) für N.-Yunnan. Eine Liste der Arten von *Epipsestis* und *Nothoploca* wird gegeben.

#### References

- Dubatolov, V. V. (1987): Novyj vid sovkovidki (Lepidoptera, Thyatiridae) dlya fauni SSSR, s opisaniem novogo podvida. — Cheshuekrylye Dal'nego Vostoka SSSR: 61—64. Vladivostok (in Russian).
- Hampson, G. F. (1896): The fauna of British India, including Ceylon and Burma. Moths, 4. xxviii + 594 pp. London.
- Inoue, H. (1972): Descriptions of two new species of the Thyatiridae from Japan (Lepidoptera). — Bull. Jap. ent. Acad. 6 (2): 29—35, pl. 5.
- Leech, J. H. ([1889] 1888): On the Lepidoptera of Japan and Corea, part 2. Heterocera, sect. I. — Proc. zool. Soc. Lond. 1888: 580—655, pls. 30—32.
- Matsumura, S. (1921): Thousand Insects of Japan, additament, 4: 743—962, pls. 54—71. Tokyo (in Japanese).
- (1933): New species of Cymatophoridae of Japan and Formosa. — Insecta matsum. 7: 190—201, pl. 4.
- Moore, F. (1888): Descriptions of new genera and species of Lepidoptera Heterocera, collected by Rev. J. H. Hocking, chiefly in the Kangra District, N. W. Himalaya. — Proc. zool. Soc. Lond. 1888: 390—412.
- Sick, H. (1941): Neue Cymatophoridae der Höneschen Ausbeuten (Lepid.). — Dt. ent. Z. 1941: 1—9.

- Tshistjakov, Yu. A. & V. V. Dubatolov (1987): Sovkovidki roda *Epipsestis* Matsumura, 1921 (Lepidoptera, Thyatiridae) fauny SSSR. — *Novye Dannye po sistematike Nacekomykh Dal'nego Vostoka*: 133–137. Vladivostok (in Russian).
- Warren, W. (1888): On Lepidoptera collected by Major Yerbury in Western India in 1886 and 1887. — *Proc. zool. Soc. Lond.* 1888: 292–339.
- (1915): Some new oriental Cymatophoridae in the Tring Museum. — *Novit. zool.* 22: 154–159.
- Yoshimoto, H. (1982): Notes on the genus *Epipsestis*, with descriptions of three new species from Nepal (Lepidoptera, Thyatiridae). — *Tyo Ga*, 32: 117–137.
- (1983): On a new genus for *Polyploca nigripunctata* Warren, 1915, with description of a new species from Taiwan (Lepidoptera, Thyatiridae). — *Tinea*, 11: 125–132.
- (1984): Notes on *Epipsestis* species (Thyatiridae) from Taiwan, with description of a new subspecies. — *Japan Heterocerists' J.* (128): 33–34 (in Japanese).
- (1988): Further notes on the genus *Epipsestis* Matsumura, 1921 (Lepidoptera, Thyatiridae). — *Tyo Ga*, 39: 83–89.

Hiroshi Yoshimoto, Tokyo High School, 39-1, Unoki 2-chome, Ota-ku, Tokyo, 146, Japan.

# ZOBODAT - [www.zobodat.at](http://www.zobodat.at)

Zoologisch-Botanische Datenbank/Zoological-Botanical Database

Digitale Literatur/Digital Literature

Zeitschrift/Journal: [Bonn zoological Bulletin - früher Bonner Zoologische Beiträge.](#)

Jahr/Year: 1988

Band/Volume: [39](#)

Autor(en)/Author(s): Yoshimoto Hiroshi

Artikel/Article: [A new Epipsestis \(Lepidoptera, Thyatiridae\) and records of some allies from China based on the Höne collection 409-415](#)