

## Three New Anthicidae from Botswana (Coleoptera) – 66<sup>th</sup> Contribution to the Knowledge of Anthicidae

Gerhard UHMANN

Pressath, Germany

**Abstract.** Three new species of Anthicidae are described and illustrated: *Anthicus botswanaensis* sp. n., *Anthicus luciphilus* sp. n. and *Anthicus peri* sp. n.

**Key words.** *Anthicus*, new species, taxonomy.

### 1. INTRODUCTION

Mr. Per Forchhammer, Serowe, Botswana collected a large number of Anthicidae by diverse methods. These beetles contain three species of *Anthicus*: *A. botswanaensis* sp. n., *A. luciphilus* sp. n. and *A. peri* sp. n.. The holotypes of these new species are stored preliminarily in my collection and will be deposited later in a public collection.

All measurements are in mm.

The material covered by the present paper was checked against the types of the comparable species mentioned in the text and against the relevant literature (BONADONA 1962; VAN HILLE 1986).

### 2. TAXONOMY

#### 2.1. *Anthicus botswanaensis* sp. n. (Figs. 1–3)

**2.1.1. Holotype.** ♂, Botswana, Serowe, Farmer's Brigade, XI 1993. Mercury Vapour Light, leg. Per Forchhammer. Paratypes same date as holotype except 1 ex. IV 1994. 2 exx. X 1994. 2 exx. 21. 9. 1995. 1 ex. Namibia, Tondoro, Okavango, 19.–24. 2. 1991. leg. H. Roer, in Museum Koenig, Bonn (ZFMK).

**Measurements.** Total length 1.8., width 0.6. Head length 0.5., width (across eyes) 0.4. Pronotum length 0.4., width 0.3. Elytra length 1.1. combined width 0.6 on end of first third of elytra.

**Coloration.** Brown. Head darker, base of pronotum somewhat lighter. Elytra with a combined dark spot with vague outline. Apical five antennomeres darker. Tibiae and tarsi somewhat lighter.

**Head.** Shiny. Punctures coarse, most of spaces between punctures are smaller than punctures. With an elevated middle-line, but without an unpunctured area. Posterior margin straight. Pubescence light brown, short, nearly recumbent, mainly transverse. Temples about as long as eyes, parallel. Antennae with decumbent setae, stout, penultimate segment transverse.

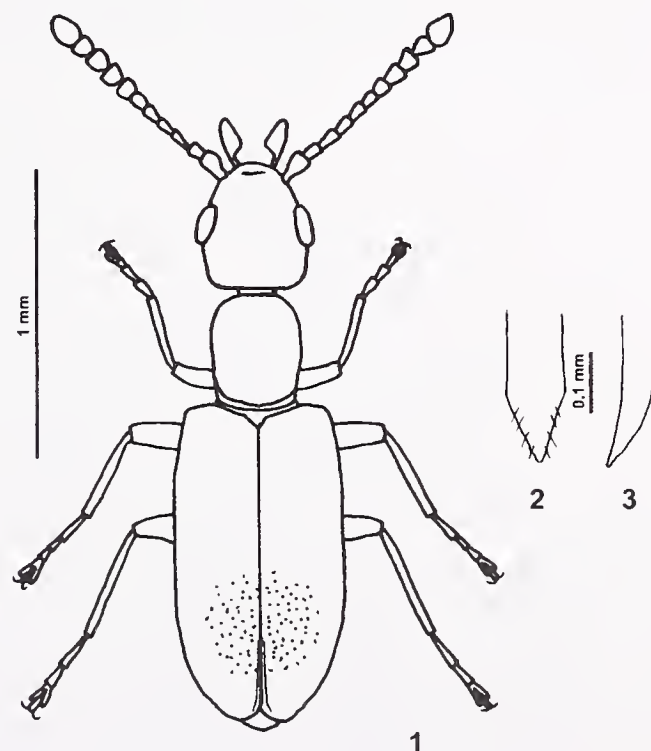
**Pronotum.** Shiny. Punctures coarse. Spaces between punctures three to five times larger than punctures. Pubescence light brown, rather long, somewhat curved, somewhat decumbent, mainly directed to the scutellum.

**Elytra.** Shiny. Punctures very coarse. Spaces between punctures much smaller than punctures. Punctures posteriorly not much smaller, spaces not much larger. Pubescence light brown, stout, not very long, semi-erect, partially in rows. Strip near the suture on the last third of elytra. Shoulders well developed.

**Legs** with inconspicuous pubescence.

**Wings** fully developed.

**2.1.2. Remarks.** Somewhat similar to *Anthicus uhligi*



**Figs. 1–3.** *Anthicus botswanaensis* sp. n.; 1. Holotype, ♂, habitus; 2. apex of penis, dorsal; 3. apex of penis, lateral.

Uhmann, 1995. but the coloration differs, elytra more parallel. *Anthicus inaequaliceps* Pic, 1911. possesses shorter temples.

**2.1.3. Derivatio nominis.** This name is given after the homeland of this species.

**2.2. *Anthicus luciphilus* sp. n.** (Fig. 4–6)

**2.2.1. Holotype.** ♂, Botswana, Serowe, Farmer's Brigade, II 1994. Mercury Vapour Light, leg. Per Forchhammer.

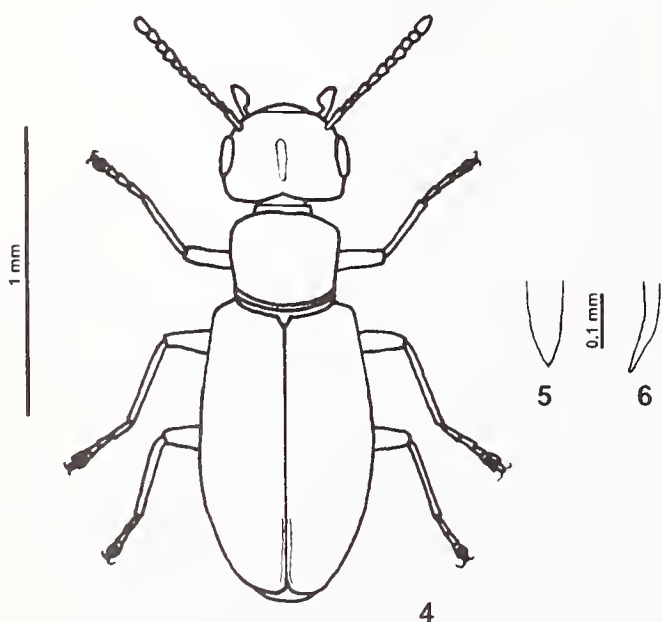
**Measurements.** Total length 1.7, width 0.6. Head length 0.3, width (across eyes) 0.4. Pronotum length 0.35, width 0.35. Elytra length 1.6, combined width 0.6 on the end of the second third of elytra.

**Coloration.** Brown, eyes black. Antennae and legs yellow.

**Head.** Shiny. Posterior margin a little convex. Coarsely wrinkled. Pubescence very short, inconspicuous. With an elevated middle-line, but without an unpunctured area. Temples half length of the eyes, somewhat divergent. Antennae slim, penultimate segments as long as wide, with inconspicuous pubescence.

**Pronotum.** Shiny. Punctures coarse. Spaces between punctures as large as punctures. Pubescence light brown, stout, somewhat decumbent, directed posteriorly. Neck with coarse punctures.

**Elytra.** Shiny. Punctures very coarse. Spaces between punctures about as large as punctures. Punctures somewhat finer posteriorly, spaces here somewhat larger. Pubescence light brown, stout, not very long, somewhat decumbent, directed posteriorly. Strip near the suture on last third of elytra, shoulders well developed.



**Figs. 4–6.** *Anthicus luciphilus* sp.n.: 4. Holotype, ♂, habitus; 5. apex of penis, dorsal; 6. apex of penis, lateral.

**Legs** with inconspicuous pubescence.

**Wings** full developed.

**2.2.2. Remarks.** Similar to *Anthicus peri* sp. n. but smaller, more shiny, pronotum relatively broader, temples much shorter.

**2.2.3. Derivatio nominis.** This species is attracted to light.

**2.3. *Anthicus peri* sp. n.** (Figs. 3–5)

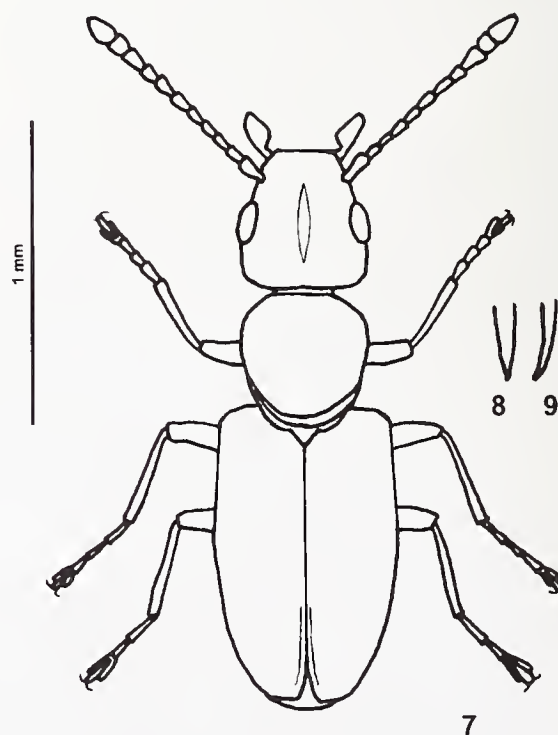
**Holotype.** ♂, Botswana, Serowe, Farmer's Brigade, X 1993. Mercury Vapour Light, leg. Per Forchhammer.

**Measurements.** Total length 1.9, width 0.6. Head length 0.5, width (across eyes) 0.4. Pronotum length 0.5, width 0.4. Elytra length 1.0, Combined width in the middle of the elytra 0.6.

**Coloration.** Yellowish brown, eyes black.

**Head.** Somewhat shiny. Punctures very coarse, most of spaces between punctures smaller than punctures, shagreened. Pubescence light brown, very short, very inconspicuous, mainly transverse. With a very narrow unpunctuated middle area. Temples as long as eyes, parallel. Antennae stout, penultimate antennomeres as long as wide. Posterior margin of head straight.

**Pronotum.** Weakly shiny. Punctures strong. Spaces between punctures about as large as punctures. Pubescence light brown, rather stout, not very long, somewhat decumbent, directed to the scutellum.



**Figs. 7–9.** *Anthicus peri* sp.n.: 7 Holotype, ♂, habitus; 8. apex of penis, dorsal; 9. apex of penis, lateral.

**Elytra.** Weakly shiny. Punctures coarse. Spaces between punctures much smaller than punctures. Punctures somewhat finer posteriorly. Spaces on the apical part one to three times as large as punctures. Pubescence light brown, stout, rather short, somewhat decumbent, directed posteriorly. Strip near suture on the last third of elytra. Shoulders well developed.

**Legs** with inconspicuous pubescence.

**Wings** fully developed.

**2.3.2. Remarks.** By the size it is similar to *Anthicus botswanaensis* sp. n., but the whole beetle is less shiny, the elytra are not so coarsely punctured. A dark spot and rows of hairs on the elytra are absent. From *Anthicus amblyderoides* Pic, 1894, the new species differs by its less shiny form, the relatively larger pronotum and the relatively much longer temples.

**2.3.3. Derivatio nominis.** I name this species after its collector, Mr. Per Forchhammer of Serowe, Botswana.

**Acknowledgements.** My thanks go to Prof. Michael Schmitt, Bonn (Germany), for his redactional care, to Per Forchhammer, Serowe (Botswana) for giving up these beetles, and to Dr. Bradley Sinclair, Bonn (Germany), for bringing my English into a printable form.

#### REFERENCES

- BONADONA, P. (1962): Coléoptères Anthicidae d'Afrique Noire et de Madagascar. *Revue de Zoologie et de Botanique Africaine* **65**: 325–335.  
VAN HILLE, J. C. (1986): Anthicidae collected in Botswana 1982–1983. *Botswana Notes and Records* **17**: 149–162.

**Authors address:** Gerhard UHMANN, Tannenhofstrasse 10. D-92690 Pressath, Germany

Received: 27. 10. 2001

Accepted: 09. 01. 2003

Revised: 19. 01. 2003

Corresponding editor: M. SCHMITT

# ZOBODAT - [www.zobodat.at](http://www.zobodat.at)

Zoologisch-Botanische Datenbank/Zoological-Botanical Database

Digitale Literatur/Digital Literature

Zeitschrift/Journal: [Bonn zoological Bulletin - früher Bonner Zoologische Beiträge.](#)

Jahr/Year: 2003

Band/Volume: [51](#)

Autor(en)/Author(s): Uhmann Gerhard

Artikel/Article: [Three New Anthicidae from Botswana \(Coleoptera\) - 66th Contribution to the Knowledge of Anthicidae 71-73](#)