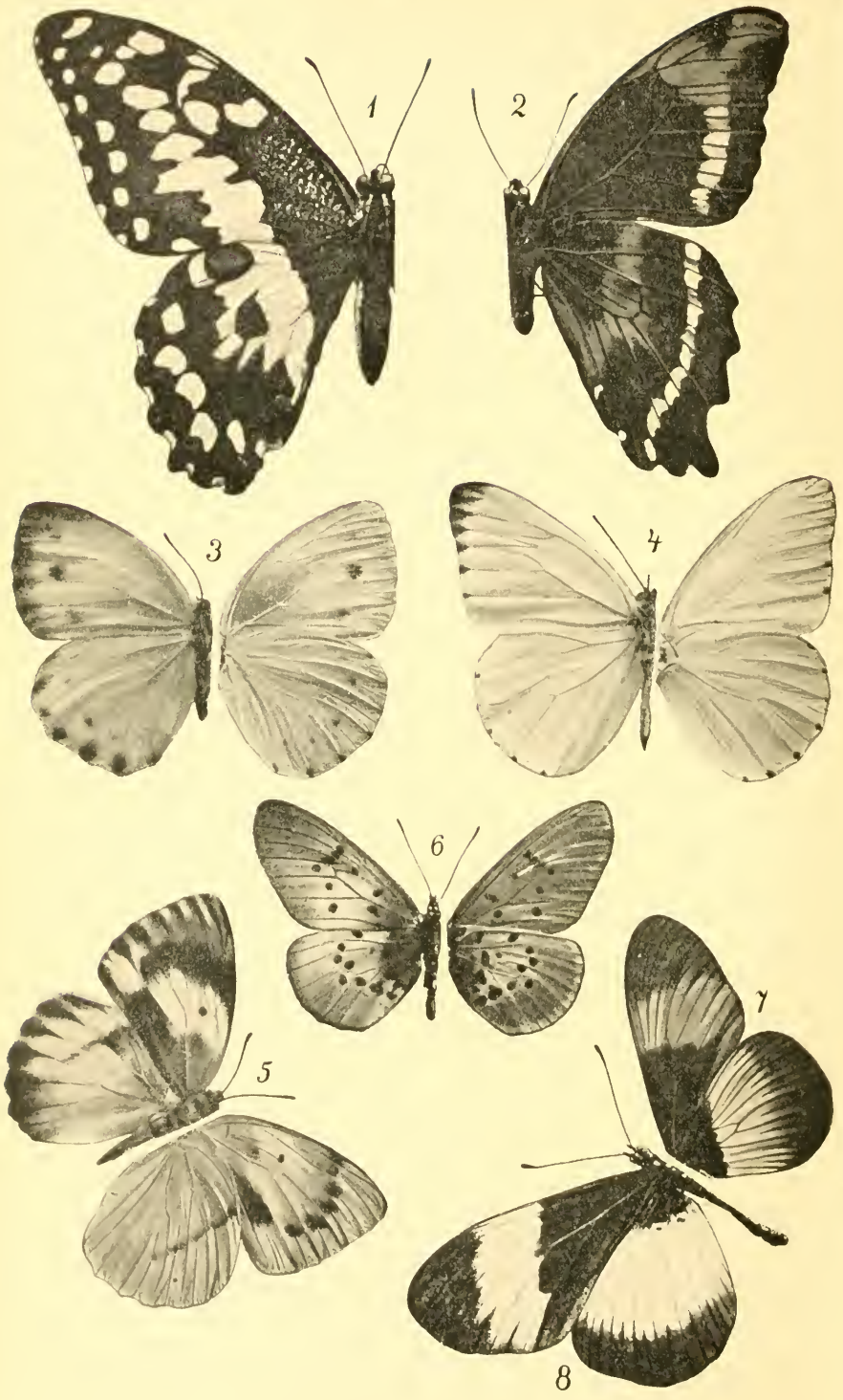


Erklärungen zu Tafel I.

- Figur 1. *Papilio phorcas tippelskirchi* ♂ . . . Suffert.
„ 2. „ *boosi* ♂ „
„ 3. *Mylothris schumanni* ♂ „
„ 4. „ „ ♀ „
„ 5. *Alaena rollei* ♂ „
„ 6. *Hypolycaena dolores* ♂ „
„ 7. „ „ ♀ „



Erklärungen zu Tafel II.

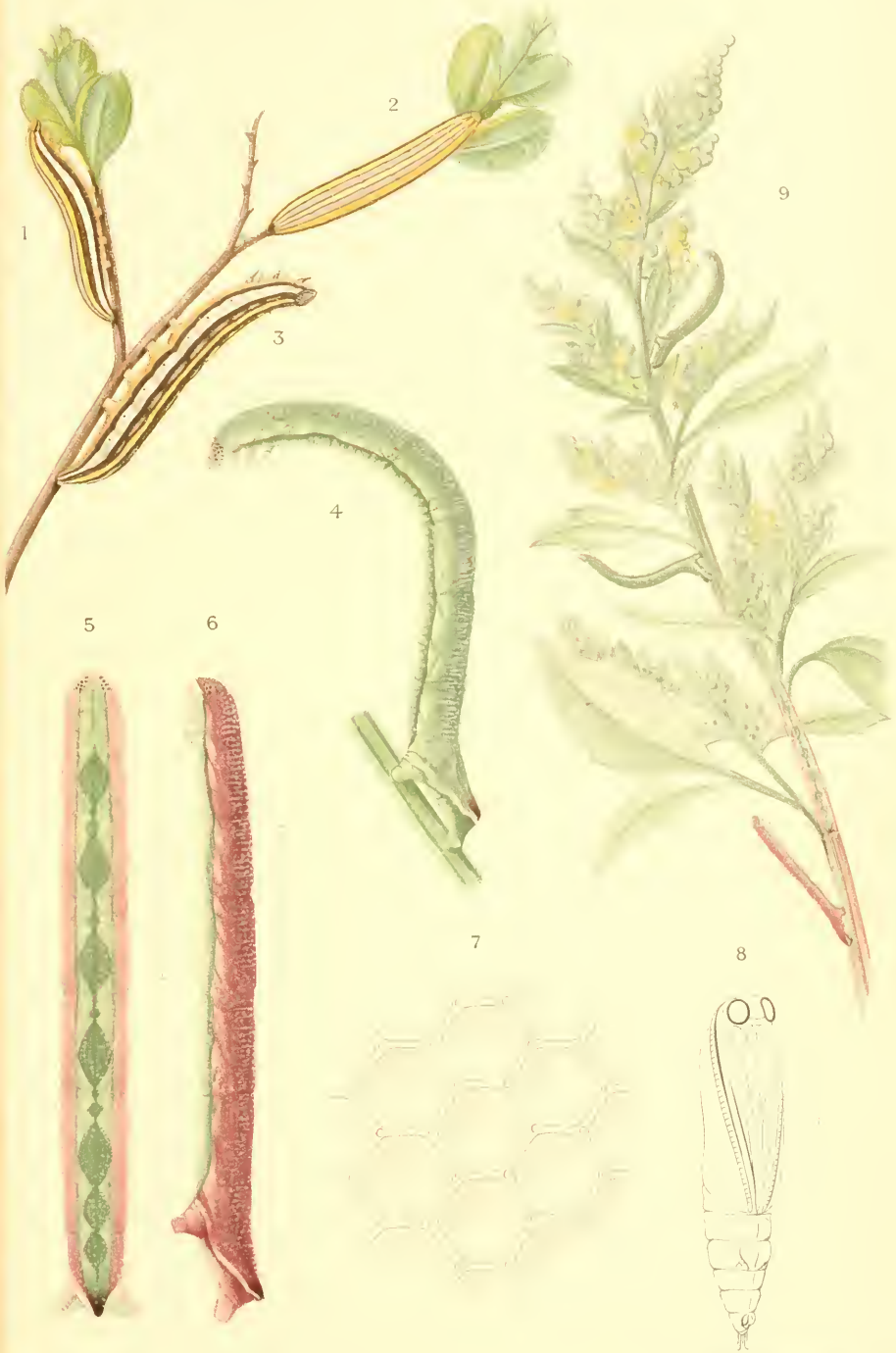
- Figur 1. *Papilio demodocus decusdemo* ♂ . . Suffert.
„ 2. *Papilio chrapkowskii* ♂ Unters.
„ 3. *Pieris kückenii* ♀
„ 4. *Appias haendeli* ♂
„ 5. *Teracolus ione aurivillii* ♀
„ 6. *Acraea asboloplintha* ♀ Karsch.
„ 7. *Planema haydni* ♂ Suffert.
„ 8. „ „ ♀

Erklärungen zu Tafel III.

- Figur 1. *Papilio lyaeus aelyus* ♂ Suffert.
" 2. " " " ♀ "
" 3. *Mylothris beethoveni* ♀ "
" 4. *Acraea brahmsi* ♂ "
" 5. " *rohlfsi* ♂ "
" 6. *Mylothris ertli* ♂ "
" 7. *Teracolus hildebrandti clara* ♀ "
" 8. " *lüderitzi* ♂ "
" 9. " *wissmanni* ♂ "
" 10. *Neptis livingstonei* ♂ "







1-3 AGROTIS V. SUBCAERULEA STGR.
4-9 EUPITHECIA SINUOSARIA EV.

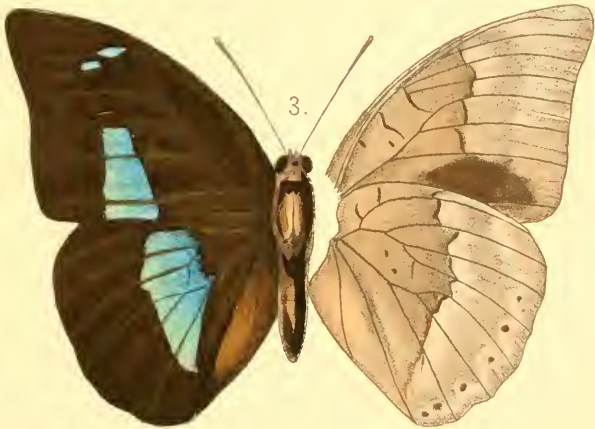


Erklärung zu Tafel VI.

- Figur 1: *Prepona amesia dives* Fruhst. ♂
„ 2: *Prepona lygia* Fruhst. ♂
„ 3: *Prepona eugenes decorata* Fruhst. ♀

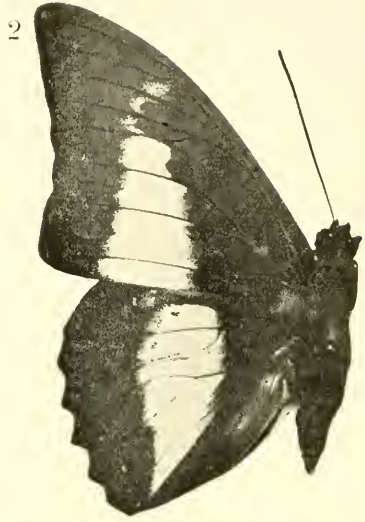
Erklärung zu Tafel VII.

- Figur 1: *Prepona dexamenes leuctra* Fruhst. ♀
» 2: *Prepona eugenes bahiana* Fruhst. ♂
» 3: *Prepona antimache crassina* Fruhst. ♂



Iris, Dresden.
Bd. XVII.

Taf. VIII

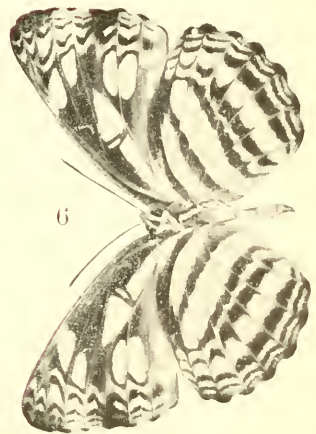
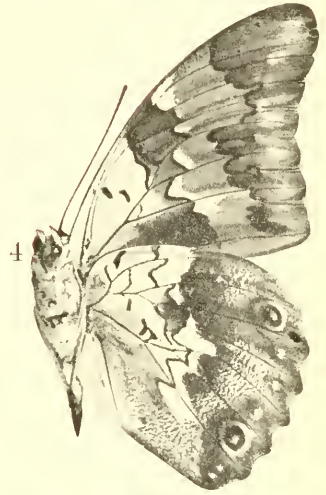
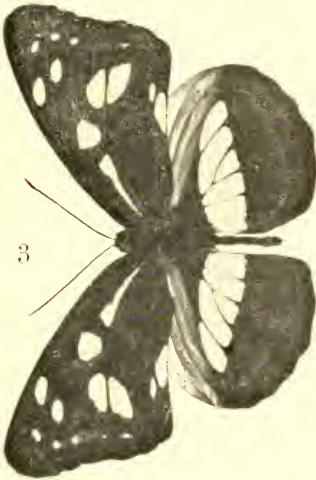
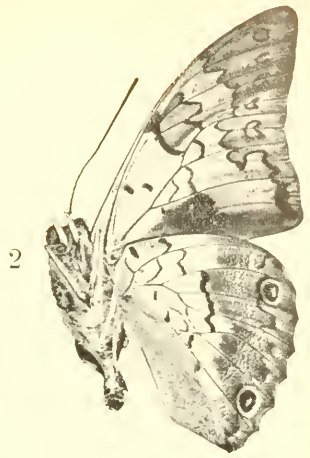


Erklärung zu Tafel VIII.

- Figur 1: *Prepona laertes penelope* Fruhst.
» 2: *Prepona gnorima philetas* Fruhst.
» 3: *Prepona laertes antikleia* Fruhst.
» 4: *Prepona eugenes decorata* Fruhst.

Erklärung zu Tafel IX.

- Figur 1: *Prepona laertes ikarios* Fruhst.
" 2: " " " "
" 3: *Phaedyma shepherdii donata* Fruhst.
" 4: *Prepona gnorima* Bates ♂, Unterseite.
" 5: *Phaedyma shepherdii graciella* Fruhst.
" 6: " *columella sumbana* Fruhst.



ZOBODAT - www.zobodat.at

Zoologisch-Botanische Datenbank/Zoological-Botanical Database

Digitale Literatur/Digital Literature

Zeitschrift/Journal: [Deutsche Entomologische Zeitschrift "Iris"](#)

Jahr/Year: 1904

Band/Volume: [17_Tafel](#)

Autor(en)/Author(s): diverse

Artikel/Article: [Tafel I I-IX](#)