



Zeichnung n. d. Nat., Lithogr. u. Druck
 von Paul Weiss - Ludwigsfelde n. A. N.

- 1. *Tetraphana Albipes* Fg.
- 2. *Siculodes Fenestrata* Fg.
- 3. *Siculodes Rosacea* Fg.
- 4. *Siculodes Palchelloides* Fg.
- 5. *Siculodes Polychloralis* Fg.
- 6. *Siculodes Furcatula* Fg.
- 7. *Siculodes Rotundula* Fg. & *Siculodes Soroidula* Plöte.
- 8. *Siculodes Soroidula* Plöte.
- 9. *Siculodes Flavula* Fg.
- 10. *Siculodes Minutilla* Fg.
- 11. *Siculodes Guttata* Fg.
- 12. *Siculodes Denticulata* Fg.
- 13. *Varnia Aurea* Fg.
- 14. *Siculodes Selenioides* Fg.
- 15. *Siculodes Leuconotula* Fg.
- 16. *Siculodes Apicalis* Fg.
- 17. *Siculodes Erythralis* Fg.
- 18. *Siculodes Denticulata* Fg.
- 19. *Strigina Scitaria* Wlk.
- 20. *Siculodes Fovellula* Fg.

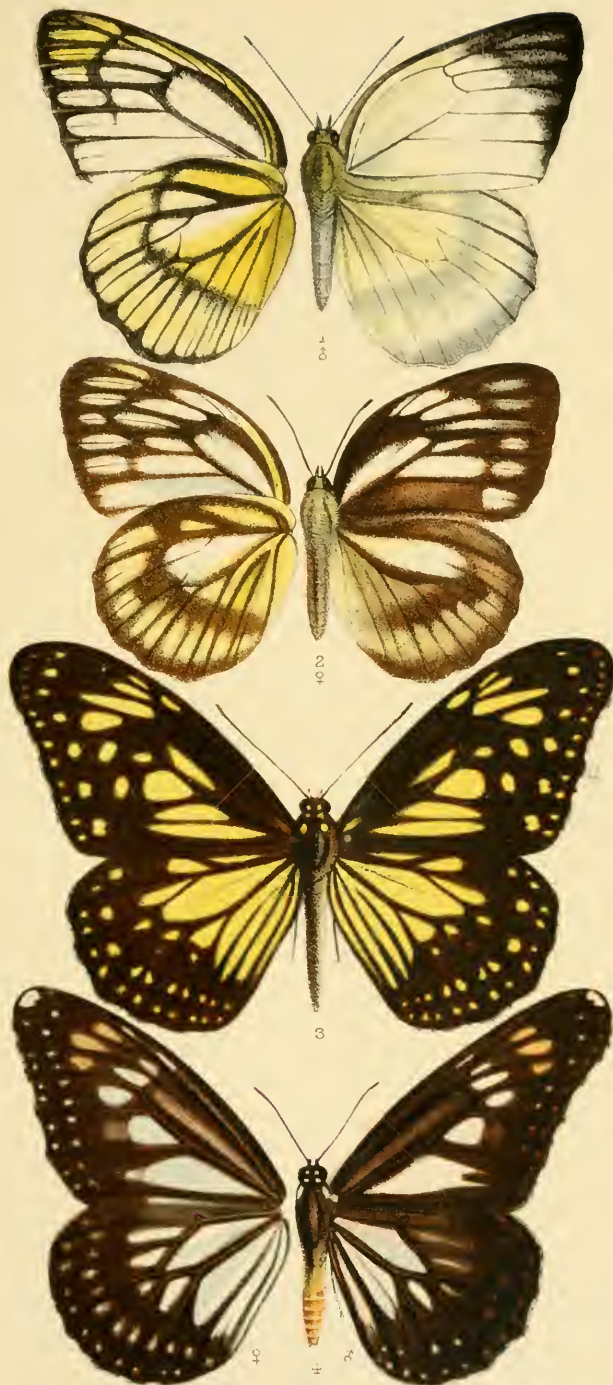


Trichoptera ...
Phalaena ...

1. *Trichoptera* ... 2. *Phalaena* ... 3. *Phalaena* ... 4. *Phalaena* ... 5. *Phalaena* ... 6. *Phalaena* ... 7. *Phalaena* ... 8. *Phalaena* ... 9. *Phalaena* ... 10. *Phalaena* ... 11. *Phalaena* ... 12. *Phalaena* ... 13. *Phalaena* ... 14. *Phalaena* ... 15. *Phalaena* ... 16. *Phalaena* ... 17. *Phalaena* ... 18. *Phalaena* ... 19. *Phalaena* ... 20. *Phalaena* ... 21. *Phalaena* ...



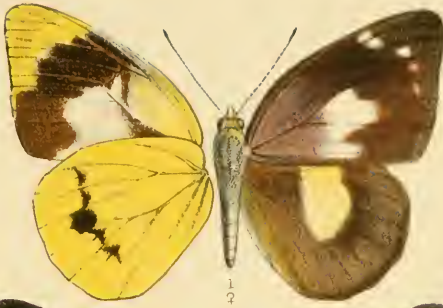
1. *Pycna Lucifera* Stgr. 2. *Spinydia Diacaupa* Stgr. 3. *Agrotis honesta* Stgr.
 4. *Agrotis albivenata* Stgr. 5. *Agrotis Præcipua* Stgr. 6. *Agrotis Grifurcula* Stgr.
 7. *Cucullia Distinguenta* Stgr. 8. *Anlibertia Baractica* Stgr. 9. *Boarmia Exstaria* Stgr.
 10. *Endagriä Fuscula* Stgr. 11. *Emelia Vaulgeri* Stgr. 12. *Cephis Gattericellus* Ragon.
 13. *Thalp. Subvata* Stgr. 14. *Meclasia Excavalis* Ragon. 15. *Belys Seriziali* Stgr.
 16. *Meclucha Cardinalis* Stgr. 17. *Meclucha Cardinalis* Stgr. 18. *Meclucha Cardinalis* Stgr.
 19. *Meclucha Cardinalis* Stgr. 20. *Meclucha Cardinalis* Stgr.
 21. *Meclucha Cardinalis* Stgr. 22. *Meclucha Cardinalis* Stgr. 23. *Periniphele Oerriasi* Stgr. 24. *Belys Graeseri* Stgr.



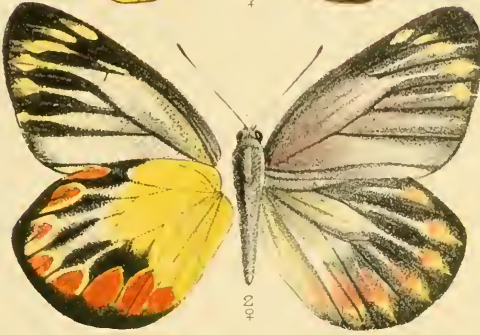
FW Froschek del. et lith.

West Newman chromo

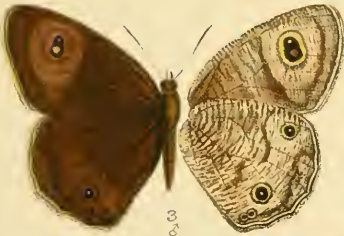
1. *Huphina celebensis* ♀ 2. *Chlorochrysis Donertzi*
 3. *Nasuma celebensis*



1



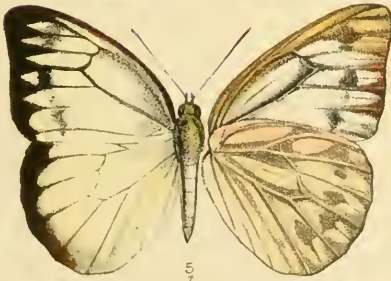
3 4



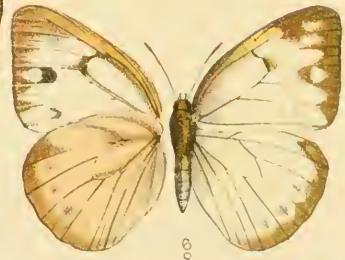
5



6



5



6

F. W. Frohawk del. et lith.

West Newman chrom.

1 *Appias dohertyi*
3 4 *Ypthima celebensis*

5 *Deimas wallacei*
5 6 *Huphina discipulus*

ZOBODAT - www.zobodat.at

Zoologisch-Botanische Datenbank/Zoological-Botanical Database

Digitale Literatur/Digital Literature

Zeitschrift/Journal: [Deutsche Entomologische Zeitschrift "Iris"](#)

Jahr/Year: 1892

Band/Volume: [5_Tafel](#)

Autor(en)/Author(s): diverse

Artikel/Article: [Tafel I-V](#)